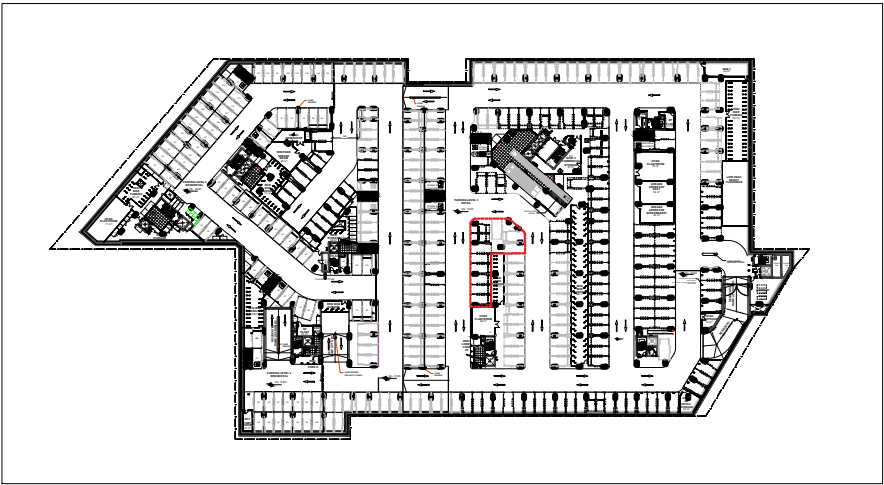
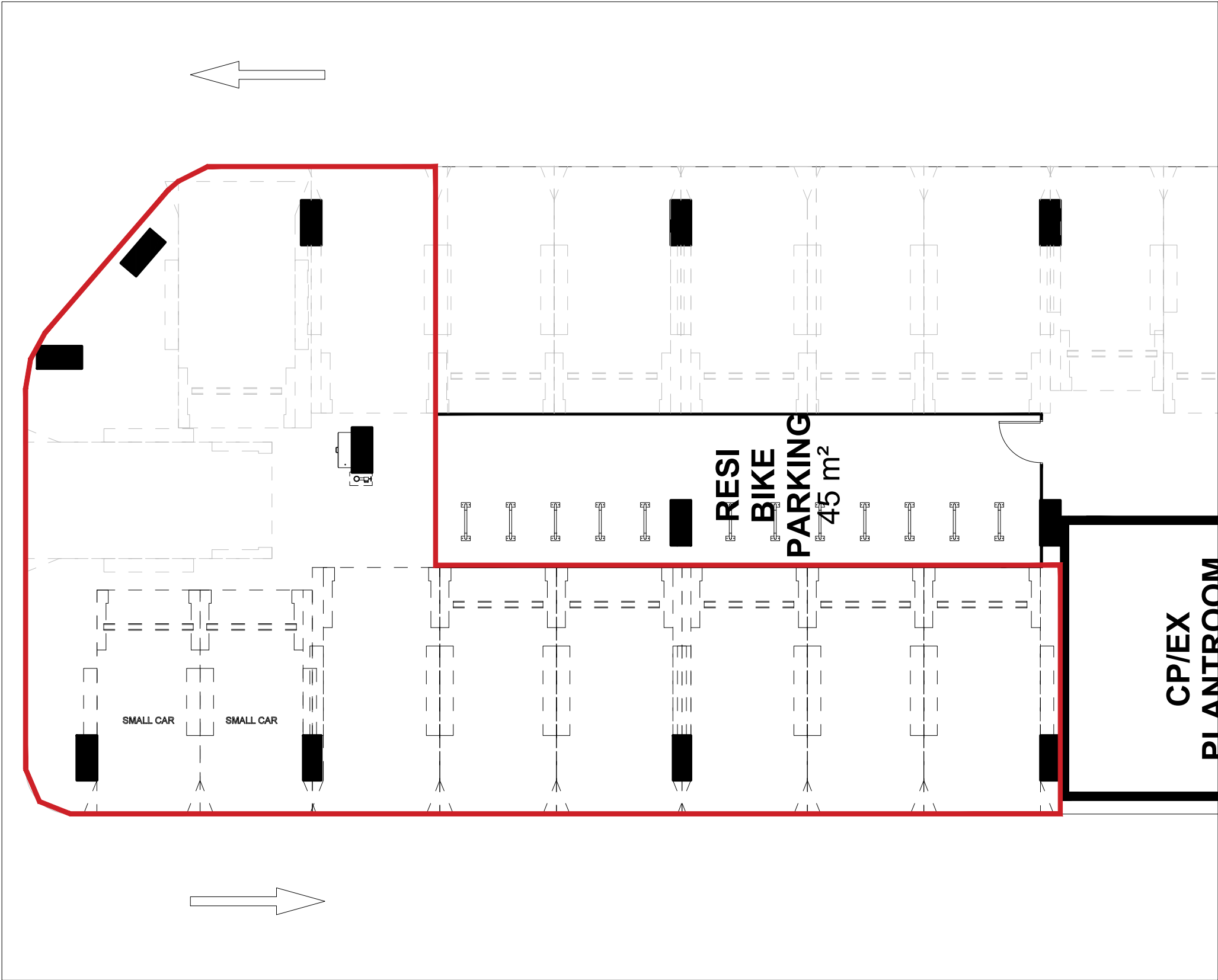




SITE / LOCATION - AERIAL PHOTO
SCALE: NTS FONT: SIX MAPS



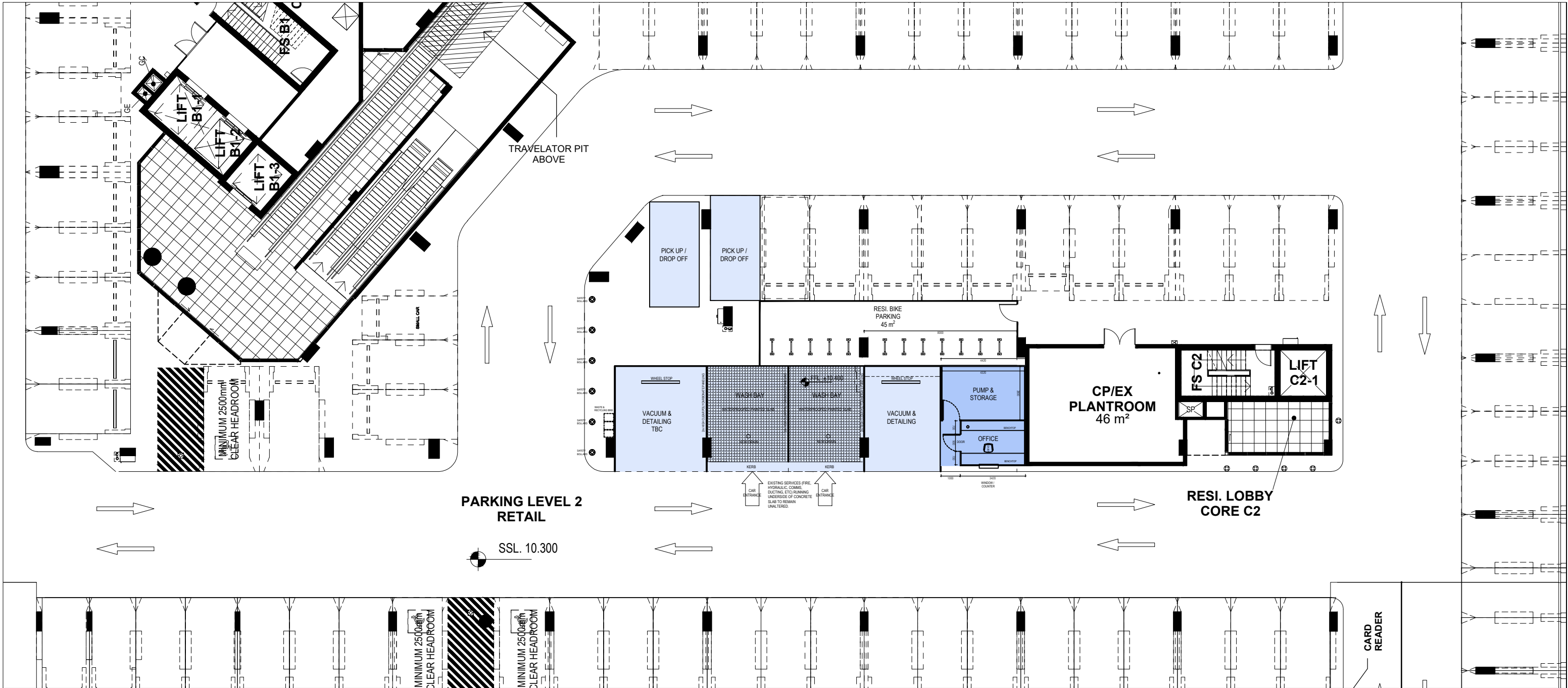
SITE / LOCATION PLAN - BASEMENT LEVEL P2
SCALE: 1:2000



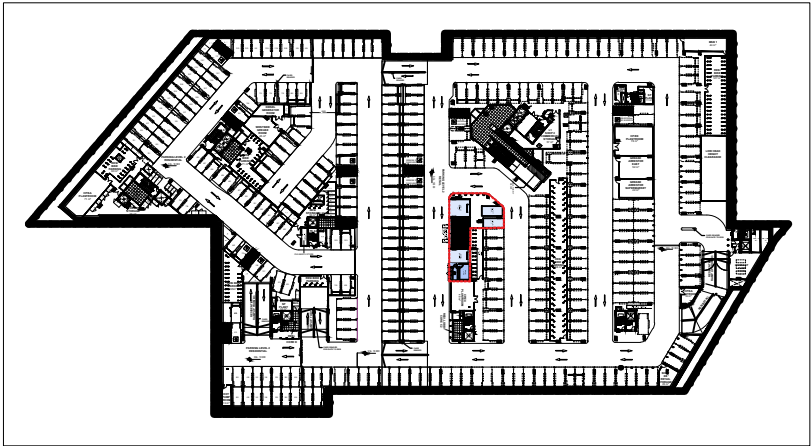
EXISTING BASEMENT PLAN - LEVEL P2
SCALE: 1:100

- GENERAL NOTES:
- All works to comply with current NCC requirements and Australian Standards.
 - Existing fire protection to remain unaltered.
 - Existing services, cable trays & ducting to remain unaltered.
 - Core hole drilling (if required) to be confirmed by Structural Engineer.
 - Trolley bay to be removed and reinstalled as shown on proposed plan.

Rev	Description	Date
1	ISSUED FOR DA SUBMISSION	2020-06-15
2	ISSUED FOR DA SUBMISSION	2021-07-28



PROPOSED CAR BAY WASH PLAN - LEVEL P2
SCALE: 1:100



SITE / LOCATION PLAN - BASEMENT LEVEL P2
SCALE: 1:2000

SELF CONTAINED WASH BAY DETAILS:

- Drive-thru configuration
- 8m wide x 6m deep Bay
- Clear Wall Paneling
- Grated Flooring
- Fiberglass Tub
- Ramps at Entrance and Exit
- 2 x Wall Mounted Stainless Steel Water Reels (connected to Pressure Washers) within each Bay
- 1 x Wall Mounted Air Reel (connected to air compressor within each Bay)
- Ceiling Mounted Lighting
- 1 x Double GPO Waterproof powerpoints located within each bay

WATER TREATMENT SYSTEM DETAILS:

- Supply and install Eclipse Hydroflow HYD1000S oil water separator and connect to wash bay.
- Able to process 1000 litres per hour
- Stainless Steel Construction
- Diaphragm Pump, stand and float switch
- Pump Box

PLANT ROOM & EQUIPMENT DETAILS:

- Approx 2m x 4.6m Plant Room with lockable door
- 2 x Industrial Standard Pressure Washers
- 1 x 3HP Air Compressor
- 2 x Wet/Dry Vacuums (2 motor)
- 1 x Bunded Chemical Tray
- Wash Tub
- Lighting
- 4 x Double GPO Waterproof Power Points
- Smoke Detector/Emergency Exit sign
- Fire Extinguisher
- Plumbing for Washing Machine

OFFICE DETAILS:

- Approx 2.5m x 3 m Office with Lockable door
- Lockable window with counter
- Lighting
- 4 x Double GPO Waterproof Power Points
- Smoke Detector/Emergency Exit sign

PLEASE NOTE:

THIS DOCUMENT IS UNDER CONSTANT REVIEW AND PRONE TO CHANGE DURING CONSTRUCTION. DO NOT SCALE DRAWINGS MANUALLY OR ELECTRONICALLY. ALL INFORMATION TO BE CHECKED AND VERIFIED ON SITE BY THE BUILDER. IN THE EVENT OF DISCREPANCIES REFER TO ARCHITECT PRIOR TO COMMENCEMENT OF THE WORK. THIS DOCUMENT DESCRIBES THE INTENT OF DESIGN ONLY. DETAILS AND/OR FINISHES, SIZES AND RELATIONSHIPS OF ROOMS, BUILDING ENVELOPE, IT IS TO BE READ IN CONJUNCTION WITH ALL RELEVANT SPECIFICATIONS, CONSULTANT AND SERVICES DOCUMENTATION. THIS DOCUMENT IS THE COPYRIGHT OF COLLARD MAXWELL ARCHITECTS Pty. Ltd.

Rev	Description	Date
1	ISSUED FOR DA SUBMISSION	2020-06-15
2	ISSUED FOR DA SUBMISSION	2021-07-28

CAR WASH BAY PROPOSAL

The Lighthouse - Dee Why

PROPOSED CAR WASH - PLAN

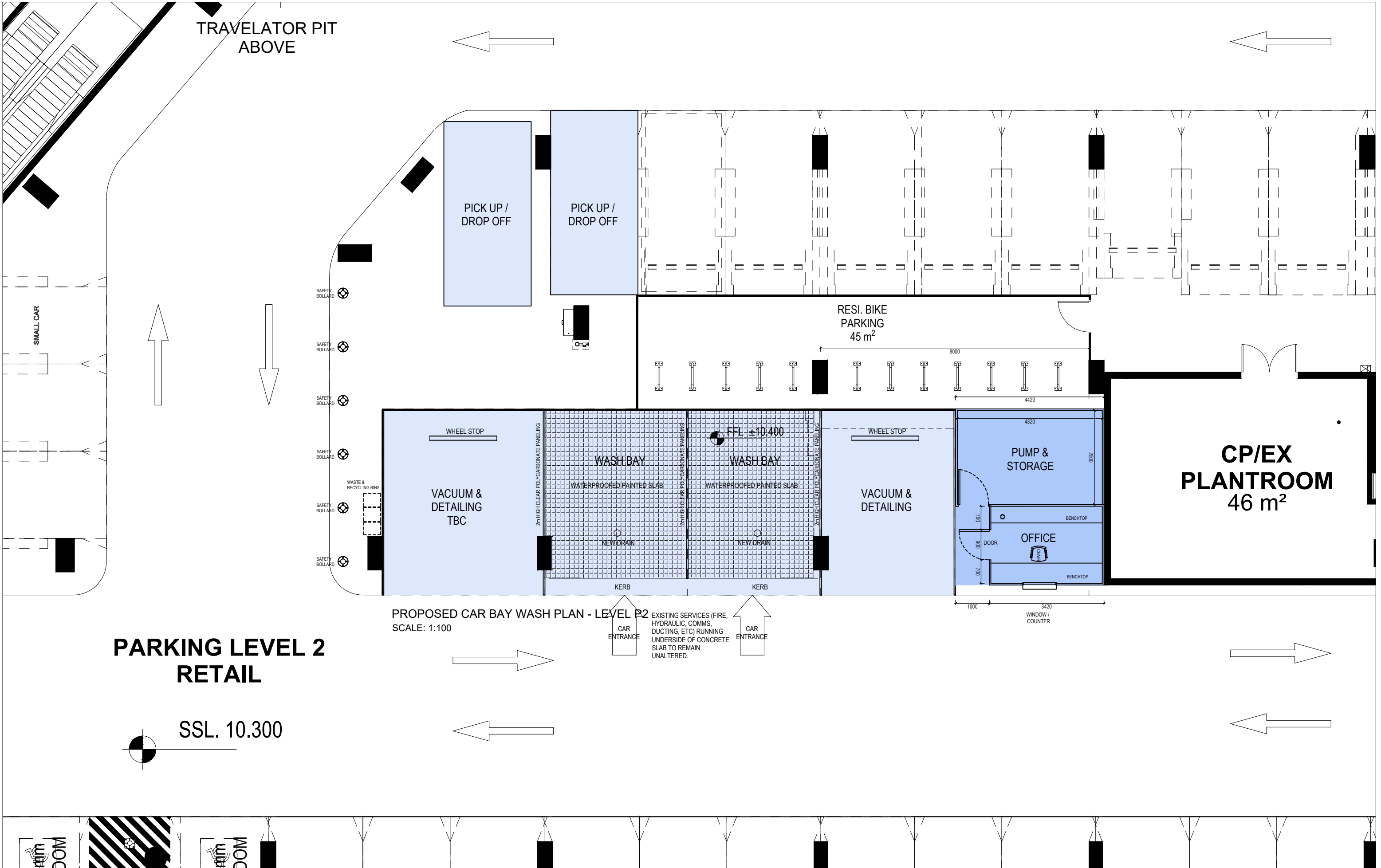
Scale
1:200 @ A3

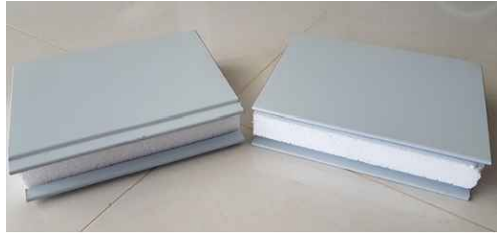
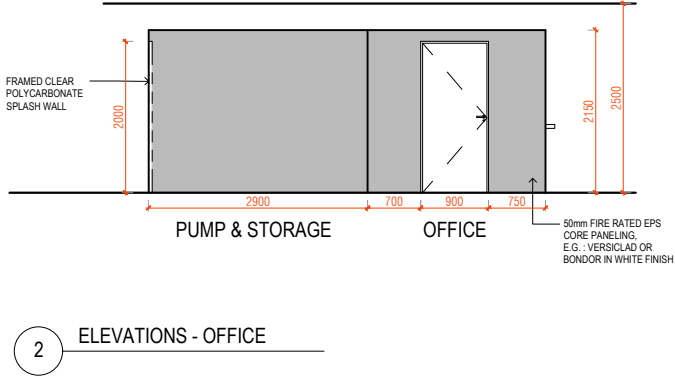
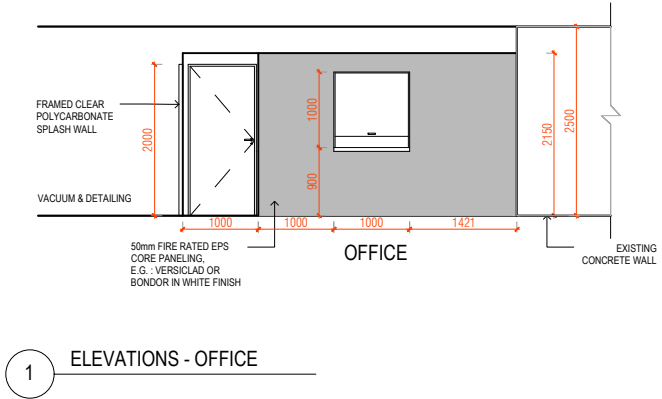
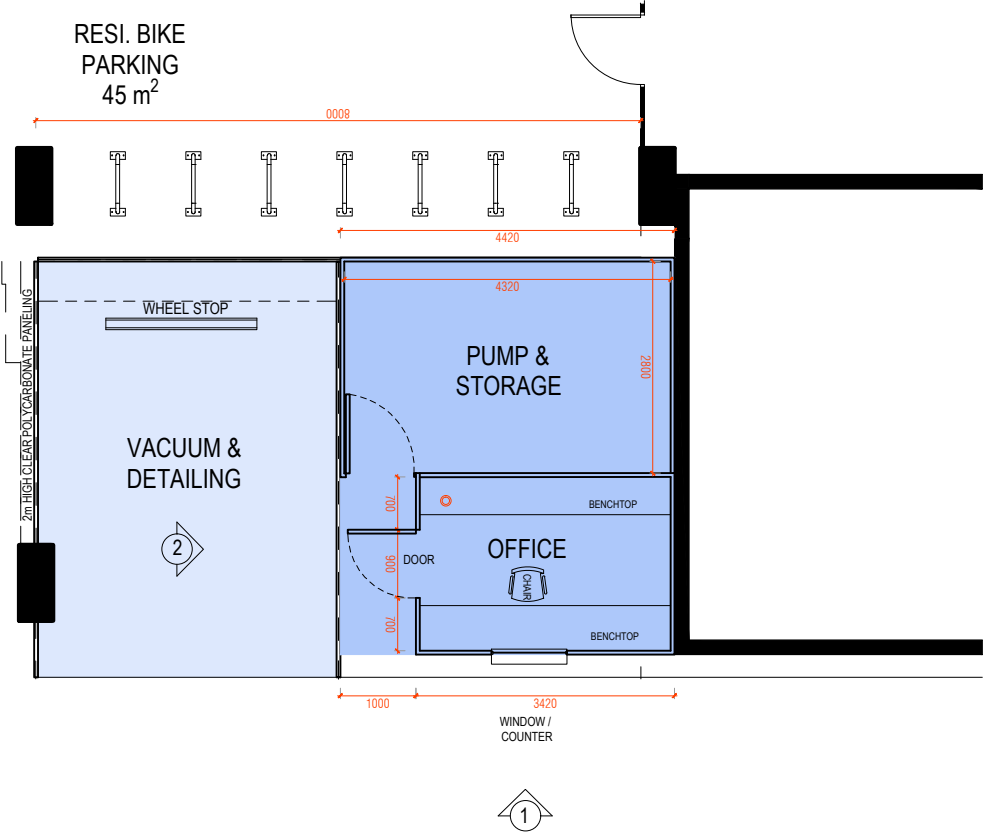
Date
Aug 11, 2021
8:03AM

Issue
2

Project No.
2020-33

DA100





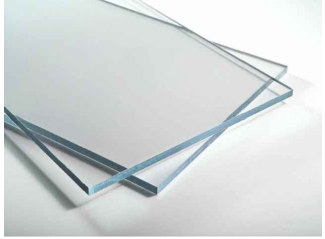
50mm FIRE RATED EPS CORE PANELING,
E.G. : VERSICLAD OR BONDOR IN WHITE FINISH



OFFICE AREA ONLY (OPTIONAL)
COMMERCIAL GRADE VINYL FLOORING



EXAMPLE OF A
COUNTER WINDOW



CLEAR POLYCARBONATE FOR
SPLASH WALLS, GRAPHICS &
SIGNAGE BY OTHERS

Rev	Description	Date
1	ISSUED FOR DA SUBMISSION	2021-06-30
2	ISSUED FOR DA SUBMISSION	2021-07-28