

**PLANT SCHEDULE - Common Areas/ ILUs
2001 LP-1.6 - TENDER ISSUE**

Table with 7 columns: Botanical Name, Common Name, Height, Spacing, Quantity, Size. Includes sections for STREET TREES, TREES/ PALMS - Common Areas/ ILUs, SHRUBS, and GRASSES AND GROUNDCOVERS.

**PLANT SCHEDULE - Common Areas/ ILUs
2001 LP-1.7 - TENDER ISSUE**

Table with 7 columns: Botanical Name, Common Name, Height, Spacing, Quantity, Size. Includes sections for STREET TREES, TREES/ PALMS - Common Areas/ ILUs, SHRUBS, and GRASSES AND GROUNDCOVERS.

**PLANT SCHEDULE - Common Areas/ ILUs
2001 LP-1.8 - TENDER ISSUE**

Table with 7 columns: Botanical Name, Common Name, Height, Spacing, Quantity, Size. Includes sections for TREES/ PALMS - Common Areas/ ILUs, SHRUBS, GRASSES AND GROUNDCOVERS, and PLANT SCHEDULE - Detention Basin.

**PLANT SCHEDULE - Common Areas/ ILUs
2001 LP-1.9 - TENDER ISSUE**

Table with 7 columns: Botanical Name, Common Name, Height, Spacing, Quantity, Size. Includes sections for TREES/ PALMS - Common Areas/ ILUs, SHRUBS, GRASSES AND GROUNDCOVERS, PLANT SCHEDULE - 25m BUSH FIRE BUFFER ZONE, and PLANT SCHEDULE - Detention Basin.

Table with 3 columns: revision, description, date. Lists 13 revisions from STAGE 5 REVISED to DA ISSUE.

client:



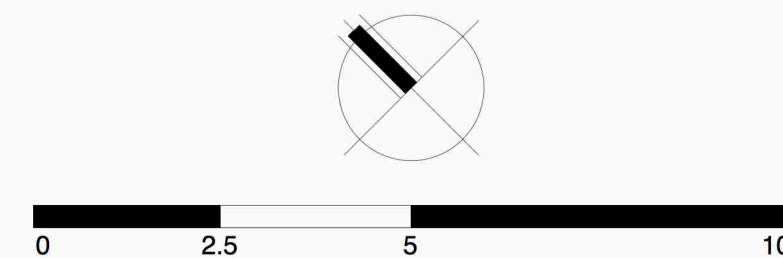
Anglican Retirement Villages
PO Box 284, Castle Hill NSW 1765
Level 2, Century Corporate Centre,
82 Norwest Boulevard
Baulkham Hills NSW 2153

architect:

environa studio logo and contact info:
19/151, Foveaux Street, Surry Hills NSW 2010
t: 02 9332 1211; f: 02 9332 1355
e: info@environastudio.com.au

landscape architect:

JOHN LOCK & associates
LANDSCAPE ARCHITECTURE
jla logo and contact info:
Suite 3, 5 Earl Street, Mosman NSW 2088
p: 02 9969 9866 e:landscape@bigpond.com



project:

**WARRIEWOOD BROOK
WARRIEWOOD
NSW 2102**

stage:

**STAGES 4, 5 and 6
COVER SHEET**

scale : 1:500 @ A1
50% @ A3

date : 01/02/2013

job no. : drawing no. :

2001 LP-00



KEY

- EXISTING TREES TO BE REMOVED
- EXISTING TREES TO BE RETAINED
- NEW TREES
- MASSSED SHRUBS, GRASSES AND GROUNDCOVERS
- LAWN
- INDIGENOUS LAWN TO APZ
- DECKING
- SAWN COLOURED CONCRETE
- CONCRETE PATH
- 4m WIDE FIRE TRAIL

PLANT SCHEDULE - Detention Basin

Botanical Name	Common Name	Height	Spacing	Quantity	Size
GRASSES					
<i>Baumea rubiginosa</i>	Soft Twig Rush	1m	6/m ²	160	TUBE
<i>Bolboschoenus caldwellii</i>	Sea Club Rush	0.5m	6/m ²	160	TUBE
<i>Eleocharis cylindrostachys</i>	Common Spike Rush	0.75m	6/m ²	160	TUBE
<i>Schoenoplectus pungens</i>	Sharp Club Rush	1m	6/m ²	160	TUBE
<i>Schoenoplectus validus</i>	Club Rush	0.75m	6/m ²	160	TUBE

rev	description	date
14	FENCING - GENERAL REVISIONS	16/02/16
13	REVISED STAGE 5 REVISED	29/01/16
12	PATH + RETAINING WALL REVISIONS	22/10/15
11	GENERAL REVISIONS	22/09/15
10	FENCES + PATHS PLANTING AREAS REVISED	02/07/15
09	GENERAL REVISIONS	20/06/15
08	BASEIN BRIDGE REM'D PATHS REV'D	20/06/15
07	RIPARIAN CORRIDOR B'DY FENCE REM'D	20/10/14
06	TENDER ISSUE	20/08/14
05	TENDER ISSUE	15/08/14
04	COORDINATION ISSUE	07/09/14
03	COORDINATION ISSUE	26/07/14
02	AMENDED DA ISSUE	19/11/13
01	DA ISSUE	08/10/13

client:

Anglican Retirement Villages
PO Box 284, Castle Hill NSW 1765
Level 2, Century Corporate Centre,
62 Norwest Boulevard
Baulkham Hills NSW 2153

architect:

19/151, Foveaux Street, Surry Hills NSW 2010
t: 02 9332 1211 f: 02 9332 1355
e: info@environastudio.com.au

landscape architect:

JOHN LOCK & associates
LANDSCAPE ARCHITECTURE
Suite 3, 5 Earl Street, Mosman NSW 2088
p: 02 9989 9866 e: landesign@bigpond.com

0 2.5 5 10

project:

**WARRIEWOOD BROOK
WARRIEWOOD
NSW 2102**

stage:

STAGES 4, 5 and 6

LANDSCAPE SITE PLAN

scale : 1:500 @ A1
50% @ A3

date : 01/02/2013

job no. : drawing no. :
2001 LP-1.0

EXISTING TREE SCHEDULE

REFER TO ARBORISTS REPORT Prepared by: Stuart Pittendrih MARCH 2013

#	Botanical Name	Common Name	Condition	ht	spr	DCH	DRB	TPZ	SRZ	L/Sc	status
1	Eucalyptus robusta	Swamp mahogany	good condition	9	3	130	200	1.6	1.7	2	Retain
2	Eucalyptus robusta	Swamp mahogany	average condition	12	10	2X350	750	8.4	3	3	Retain
3	Eucalyptus robusta	Swamp mahogany	fair condition	12	10	500	650	6	2.8	2	Retain
4	Eucalyptus botryoides	Banqalay	good condition	6	2.5	120	180	1.4	1.6	2	Retain
5	Eucalyptus botryoides	Banqalay	good condition	6	2.5	100	200	1.2	1.7	2	Retain
6	Eucalyptus robusta	Swamp mahogany	poor condition	16	18	650	720	7.8	2.9	4	REMOVE
7	Eucalyptus microcorys	Tallow wood	good condition	19	8	410	540	4.9	2.6	2	Retain
8	Eucalyptus microcorys	Tallow wood	good condition	18	8	520	640	6.2	2.7	2	Retain
9	Dead tree	Street tree	hazardous remove asap								REMOVE
10	Lophostemon confertus	Brushbox	good condition	11	5	310	420	3.7	2.3	2	Retain
11	Lophostemon confertus	Brushbox	good condition	12	8	3X300	550	10.8	2.6	2	REMOVE
12	Platanus acerifolia	London plane	fair condition	15	11	2X270	700	10.1	2.8	3	REMOVE
13	Livistona australis	Cabbage tree palm	good condition	12	2	280	420	3.4	2.3	2	Retain
14	Livistona australis	Cabbage tree palm	good condition	5	2	310	390	3.7	2.2	2	Retain
15	Archontophoenix cunninghamiana	Banqalay Palm	good condition	15	2.5	270	410	3.2	2.3	2	REMOVE
16	Livistona australis	Cabbage tree palm	good condition	18	2	400	620	4.8	2.7	2	Retain
17	Acacia heterophylla	Norfolk Island pine	good condition	10	6	350	430	4.2	2.3	2	REMOVE
18	Livistona australis	Cabbage tree palm	good condition	16	2	350	440	4.2	2.3	2	Retain
19	Livistona australis	Cabbage tree palm	good condition	16	2	300	570	3.6	2.6	2	Retain
20	Populus deltoids	Cottonwood	poor condition	20	12	800	1050	9.6	3.4	3	REMOVE
21	Ficus benjamina	Weeping fig	good condition	15	10	300	700	8.4	2.8	2	Retain
22	Arecastrum romanzoffianum	Queen palm	good condition	15	6	250	300	3	2	3	Retain
23	Ficus benjamina	Weeping fig	fair condition	15	5	2X150	600	10.4	2.7	2	Retain
24	Arecastrum romanzoffianum	Queen palm	good condition	13	4	300	350	3	2	3	Retain
25	Ficus benjamina	Weeping fig	good condition	15	5	200	400	5.4	2.3	2	Retain
26	Ficus benjamina	Weeping fig	average condition	9	3	150	175	1.8	1.6	2	Retain
27	Cupressus species	Cyress tree	average condition	15	4	300	350	3.6	2.1	3	Retain
28	Ficus benjamina	Weeping fig	fair condition	15	13	700	600	8.4	2.7	2	Retain
29	Arecastrum romanzoffianum	Queen palm	fair condition	12	5	275	350	3.3	2.1	3	Retain
30	Ficus benjamina	Weeping fig	good condition	18	8	300	600	10.8	2.7	2	Retain
31	Ficus benjamina	Queen palm	fair condition	15	4	300	350	3	2	3	Retain
32	Ficus benjamina	Weeping fig	good condition	15	14	2X350	1200	8.4	3.6	2	Retain
33	Arecastrum romanzoffianum	Queen palm	good condition	14	6	300	450	3.6	2.4	3	Retain
34	Arecastrum romanzoffianum	Queen palm	good condition	15	5	250	350	3	2.1	3	Retain
35	Ficus benjamina	Weeping fig	good condition	13	9	300	500	3.6	2.5	2	Retain
36	Arecastrum romanzoffianum	Queen palm	good condition	10	4	240	450	2.9	2.4	2	REMOVE
37	Arecastrum romanzoffianum	Queen palm	good condition	10	4	315	1000	8	3.3	3	Retain
38	Howea belmoreana	Kentia palm	good condition	8	5	175	250	2.1	1.8	2	Retain
39	Ficus benjamina	Weeping fig	good condition	13	11	275	900	13.5	3.2	2	Retain
40	Arecastrum romanzoffianum	Queen palm	good condition	15	5	350	420	4.2	2.3	3	Retain
41	Ficus benjamina	Weeping fig	good condition	11	6	250	350	6.6	2.1	2	Retain
42	Howea belmoreana	Kentia palm	good condition	6	4	150	200	1.8	1.7	2	Retain
43	Arecastrum romanzoffianum	Queen palm	good condition	6	5	350	500	4.2	2.5	3	Retain
44	Howea belmoreana	Kentia palm	good condition	5	6	175	400	4.5	2.3	2	Retain
45	Ficus benjamina	Weeping fig	poor condition	7	5	280	650	7	2.8	3	Retain
46	Ficus benjamina	Weeping fig	good condition	13	6	480	600	5.8	2.7	2	Retain
47	Arecastrum romanzoffianum	Queen palm	good condition	13	5	275	300	3.3	2	3	Retain
48	Ficus benjamina	Weeping fig	fair condition	15	10	200	700	10.2	2.8	2	Retain
49	Arecastrum romanzoffianum	Queen palm	good condition	14	5	300	500	3.6	2.5	3	Retain
50	Arecastrum romanzoffianum	Queen palm	good condition	14	4	250	450	3	2.4	3	Retain
51	Ficus benjamina	Weeping fig	good condition	15	9	280	750	11.8	2.9	2	Retain
52	Arecastrum romanzoffianum	Queen palm	good condition	15	5	270	400	3.2	2.3	3	Retain
53	Ficus benjamina	Weeping fig	good condition	15	6	200	700	6.2	2.8	2	Retain
54	Arecastrum romanzoffianum	Queen palm	good condition	15	6	2X250	800	9.6	3	3	Retain
55	Casuarina glauca	Swamp oak	good condition	21	7	400	600	4.8	2.7	2	Retain
56	Ficus benjamina	Weeping fig	good condition	15	7	2X150	415	7.2	2.3	2	Retain
57	Arecastrum romanzoffianum	Queen palm	good condition	14	5	300	450	3.6	2.4	3	Retain
58	Ficus benjamina	Weeping fig	good condition	15	7	500	700	6	2.8	2	Retain
59	Arecastrum romanzoffianum	Queen palm	good condition	15	5	300	450	3.6	2.4	3	Retain
60	Arecastrum romanzoffianum	Queen palm	good condition	14	4	300	450	3.6	2.4	3	Retain
61	Arecastrum romanzoffianum	Queen palm	good condition	12	6	325	460	3.9	2.4	3	Retain
62	Ficus benjamina 'Variegata'	Variegated weeping fig	fair condition	8	9	300	450	3.6	2.4	2	Retain
63	Ficus microcarpa var hillii	Hill's weeping fig	good condition	16	6	385	425	4.6	2.3	2	Retain

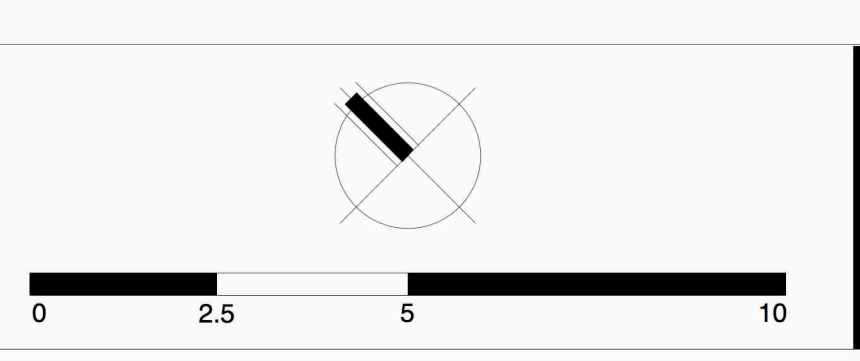


revision	description	date
14	FENCING + GENERAL REVISIONS	16/02/16
13	REVISED STAGE 5 REVISIONS	28/01/16
12	PATH + RETAINING WALL REVISIONS	22/01/15
11	GENERAL REVISIONS	22/01/15
10	FENCES + PATHS/PLANT'G AREAS REVISION	02/07/15
09	GENERAL REVISIONS	20/08/15
08	BASIN BRIDGE REMD PATHS REVD	20/10/14
07	RIPARIAN CORRIDOR BOY FENCE REMD	
06	TENDER ISSUE	20/08/14
05	COORDINATION ISSUE	01/08/14
04	COORDINATION ISSUE	25/07/14
03	AMENDED DA ISSUE	19/11/13
02	AMENDED DA ISSUE	09/10/13
01	DA ISSUE	30/08/13

client:
ARV Villages
 Anglican Retirement Villages
 PO Box 284, Castle Hill NSW 1765
 Level 2, Century Corporate Centre,
 62 Northwest Boulevard,
 Baulkham Hills NSW 2153

architect:
environa studio
 19/151, Foveaux Street, Surry Hills NSW 2010
 t: 02 9332 1211 f: 02 9332 1355
 e: info@environastudio.com.au

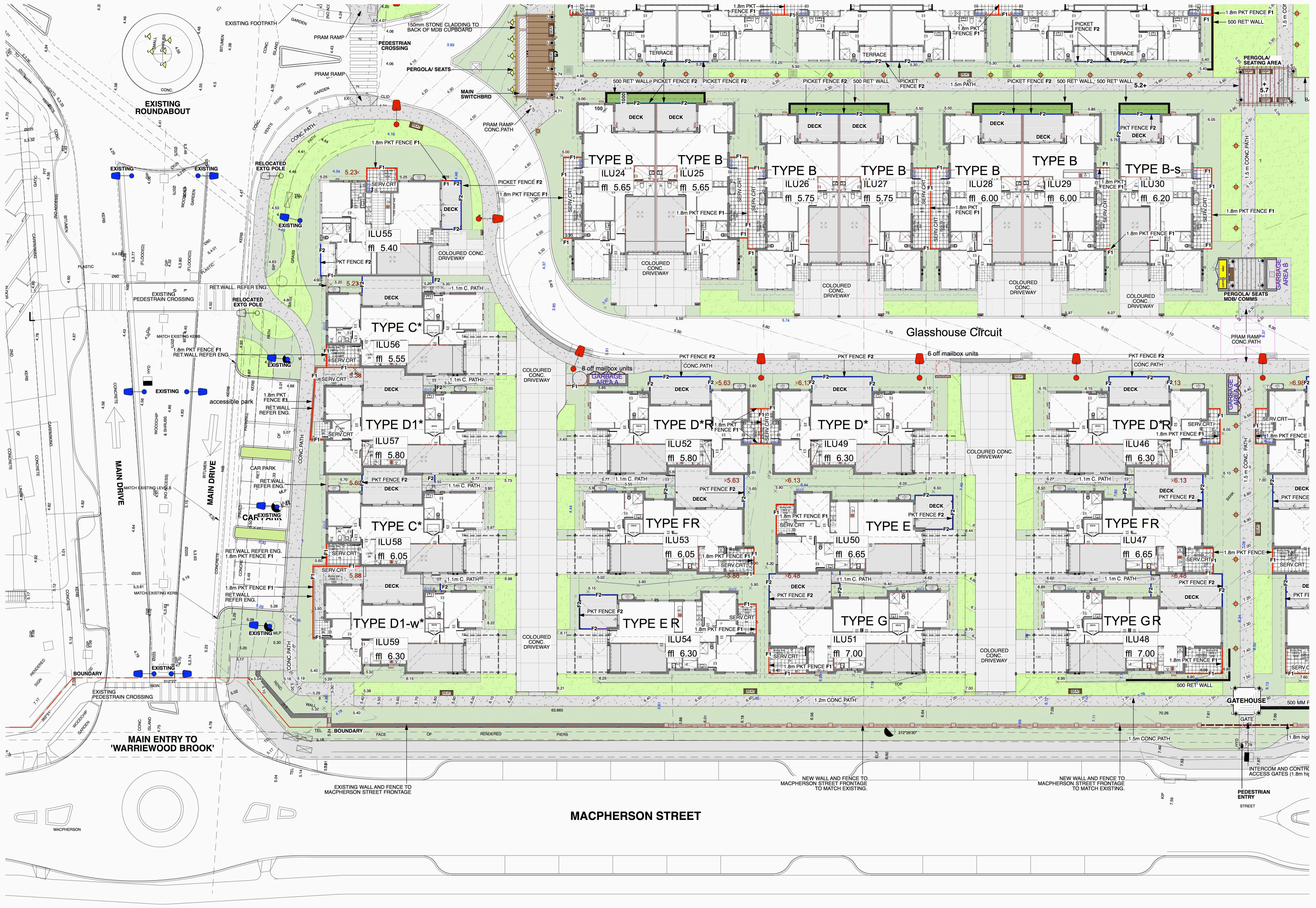
landscape architect:
JOHN LOCK & associates
 LANDSCAPE ARCHITECTURE
 Suite 3, 5 Earl Street, Mosman NSW 2088
 p:02 9969 9866 e:landesign@bigpond.com



project:
WARRIEWOOD BROOK
WARRIEWOOD
 NSW 2102

stage:
STAGES 4, 5 and 6
TREE PLAN

scale : 1:500 @ A1
 50% @ A3
 date : 01/02/2013
 job no. : 2001
 drawing no. : LP-1.1



rev	description	date
14	FENCING - GENERAL REVISIONS	16/02/16
13	REVISED STAGE 5 REVISIONS	28/01/16
12	PATH - RETAINING WALL REVISIONS	22/10/15
11	GENERAL REVISIONS	22/09/15
10	FENCES + PATHS/PLANTING AREAS REVISED	02/07/15
09	GENERAL REVISIONS	20/06/15
08	BASIN BRIDGE REMOVAL PATHS REV'D	20/01/14
07	RIPARIAN CORRIDOR BOY FENCE REMOVAL	
06	TENDER ISSUE	20/06/14
05	COORDINATION ISSUE	15/06/14
04	COORDINATION ISSUE	01/06/14
03	AMENDED DA ISSUE	26/07/14
02	AMENDED DA ISSUE	19/11/13
01	DA ISSUE	08/10/13

client:
ARV Villages
 Anglican Retirement Villages
 PO Box 284, Castle Hill NSW 1765
 Level 2, Century Corporate Centre,
 62 Norwest Boulevard,
 Baulkham Hills NSW 2153

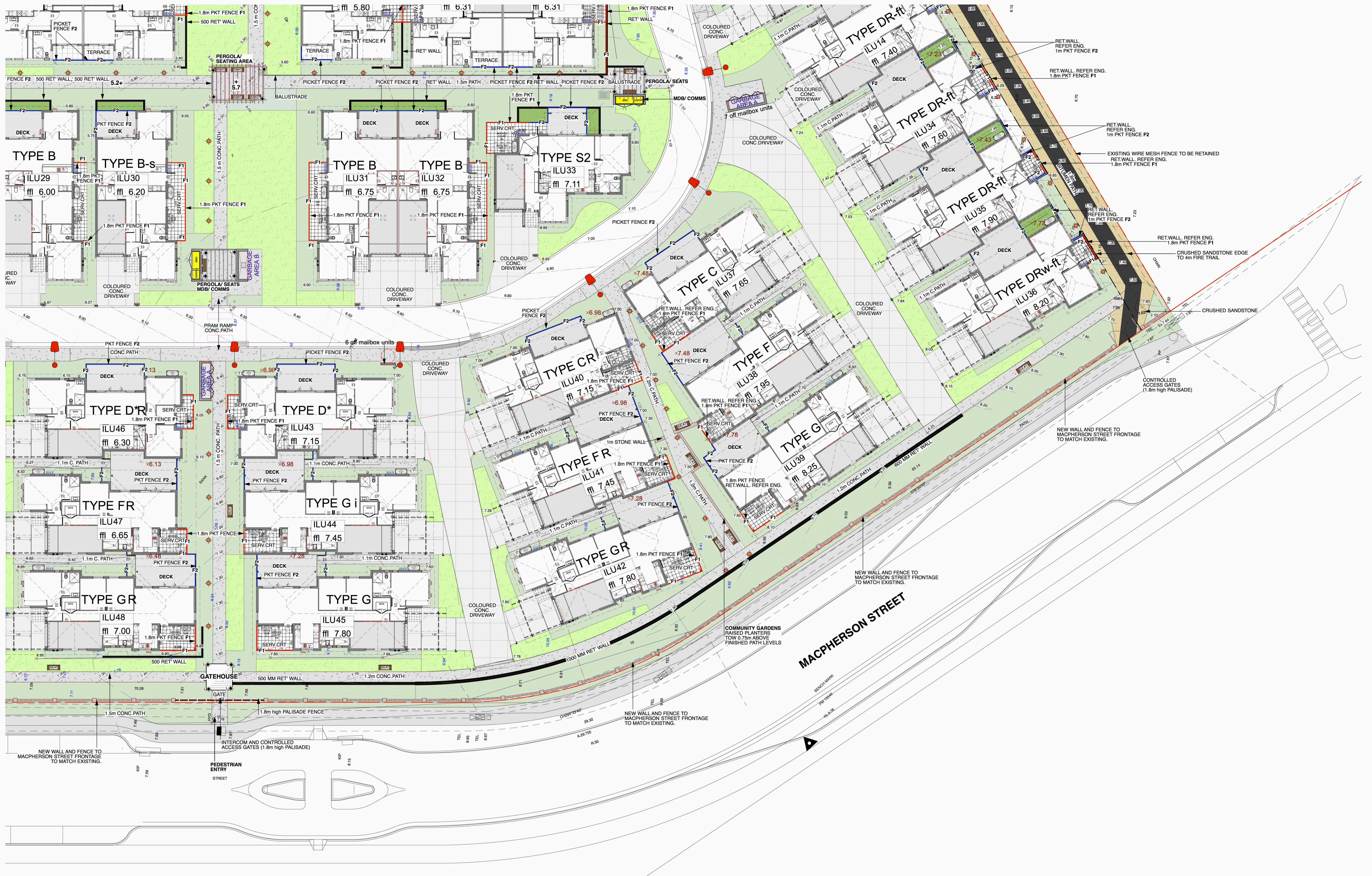
architect:
environa studio
 19/151, Foveaux Street, Surry Hills NSW 2010
 t: 02 9332 1211 f: 02 9332 1355
 e: info@environastudio.com.au

landscape architect:
JOHN LOCK & associates
 LANDSCAPE ARCHITECTURE
 Suite 3, 5 Earl Street, Mosman NSW 2088
 p: 02 9969 9866 e: landesign@bigpond.com

project:
WARRIEWOOD BROOK
WARRIEWOOD
 NSW 2102

stage:
STAGE 4, 5 and 6
MACPHERSON STREET ENTRY
HARDSCAPE PLAN

scale : 1:200 @ A1
 50% @ A3
 date : 01/02/2013
 job no. : 2001
 drawing no. : LP-1.2



rev	description	date
14	FENCING + GENERAL REVISIONS	16/02/16
13	REVISED STAGE 5 REVISED	29/01/16
12	PATH + RETAINING WALL REVISIONS	22/01/16
11	GENERAL REVISIONS	20/01/16
10	FENCES + PATHS+PLANTING AREAS REVISED	02/07/15
09	GENERAL REVISIONS	20/06/15
08	BASEIN BRIDGE REMD PATHS REV'D	20/10/14
07	REPAIRING CORRIDOR BOY FENCE REM'D	
06	TENDER ISSUE	20/08/14
05	TENDER ISSUE	15/08/14
04	COORDINATION ISSUE	01/08/14
03	COORDINATION ISSUE	25/07/14
02	AMENDED DA ISSUE	18/11/13
01	DA ISSUE	08/10/13
	DA ISSUE	30/08/13

client:



Villages

Anglican Retirement Villages
 PO Box 284, Castle Hill NSW 1765
 Level 2, Century Corporate Centre,
 62 Norwest Boulevard,
 Baulkham Hills NSW 2153

architect:



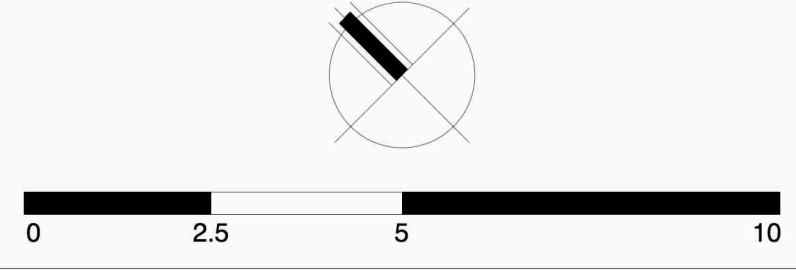
19/151, Foveaux Street, Surry Hills NSW 2010
 t: 02 9332 1211 f: 02 9332 1355
 e: info@environastudio.com.au

landscape architect:



JOHN LOCK & ASSOCIATES
 LANDSCAPE ARCHITECTURE

Suite 3, 5 Earl Street, Mosman NSW 2088
 p: 02 9969 9866 e: landscape@bigpond.com



project:

**WARRIEWOOD BROOK
 WARRIEWOOD
 NSW 2102**

stage:

**STAGE 4, 5 and 6
 MACPHERSON STREET
 HARDSCAPE PLAN**

scale :

1:200 @ A1
 50% @ A3

date :

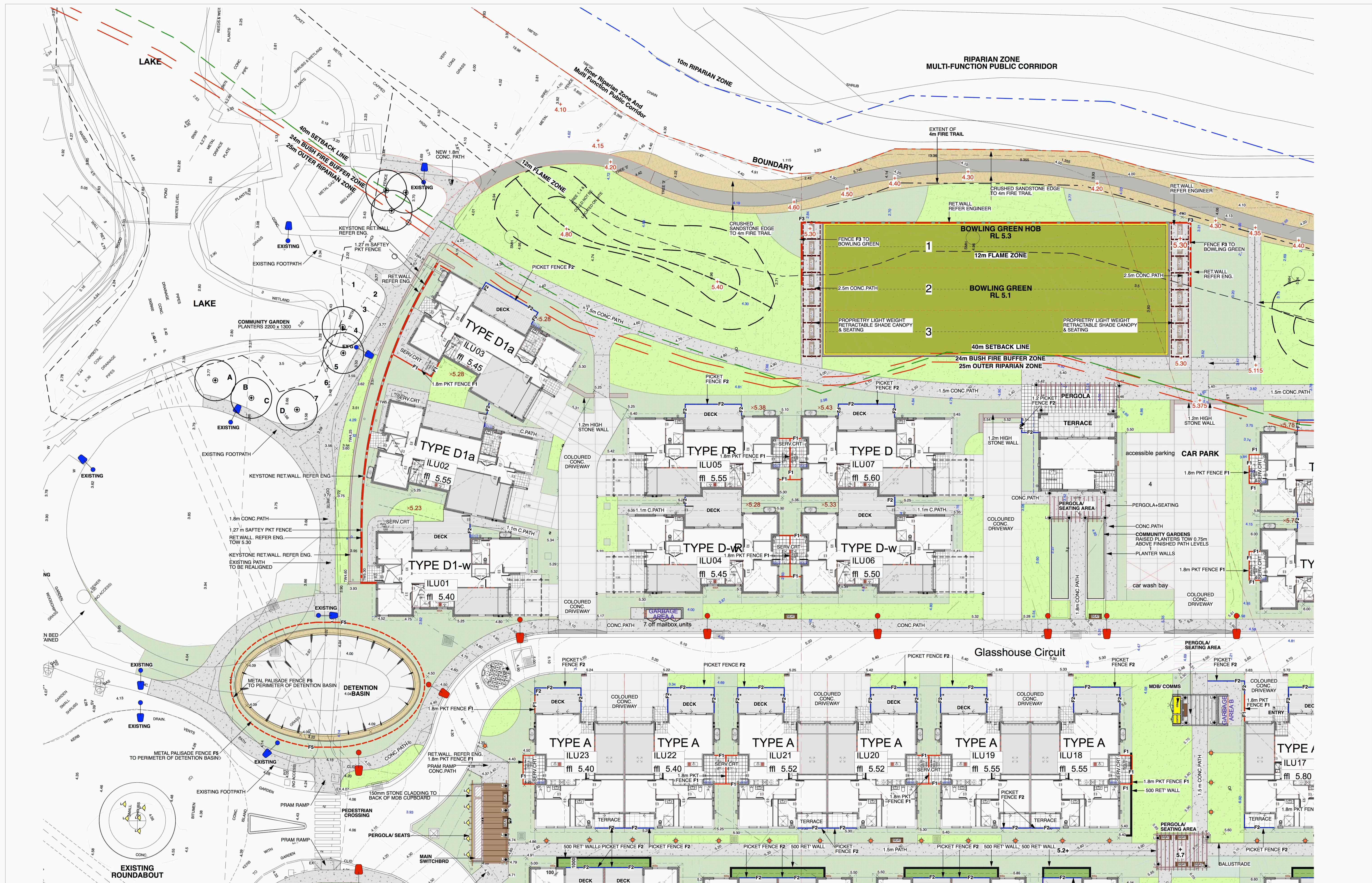
01/02/2013

job no. :

drawing no. :

2001

LP-1.3



rev	description	date
14	FENCING + GENERAL REVISIONS	18/02/16
13	REVISED STAGE 5 REVISIONS	29/01/16
12	PATH + RETAINING WALL REVISIONS	22/01/15
11	GENERAL REVISIONS	22/09/15
10	FENCES + PATHS/PLANTING AREAS REVISIONS	02/07/15
09	GENERAL REVISIONS	20/09/15
08	BASIN BRIDGE REMOVAL PATHS REVD	20/10/14
07	RIPARIAN CORRIDOR BODY FENCE REMOVAL	
06	TENDER ISSUE	20/08/14
05	TENDER ISSUE	15/08/14
04	COORDINATION ISSUE	01/08/14
03	COORDINATION ISSUE	25/07/14
02	AMENDED DA ISSUE	19/11/13
01	AMENDED DA ISSUE	08/10/13
01	DA ISSUE	30/08/13

client:
ARV Villages
 Anglican Retirement Villages
 PO Box 294, Castle Hill NSW 1765
 Level 2, Century Corporate Centre,
 Baulkham Hills NSW 2153

architect:
environa studio
 19/151, Foveaux Street, Surry Hills NSW 2010
 t: 02 9332 1211 f: 02 9332 1355
 e: info@environastudio.com.au

landscape architect:
JOHN LOCK & associates
 LANDSCAPE ARCHITECTURE
 Suite 3, 5 Earl Street, Mosman NSW 2088
 p: 02 9969 9866 e: landesign@bigpond.com

project:
WARRIEWOOD BROOK
WARRIEWOOD
 NSW 2102

stage:
STAGE 4, 5 and 6
RIPARIAN ZONE
HARDSCAPE PLAN

scale : 1:200 @ A1
 50% @ A3
 date : 01/02/2013
 job no. : drawing no. :
2001 LP-1.4

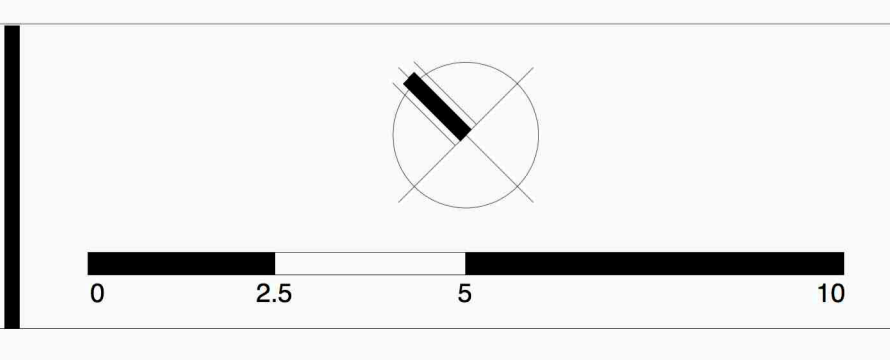


rev	description	date
14	FENCING + GENERAL REVISIONS	16/02/16
13	REVISED STAGE 5 REVISIONS	23/01/16
12	PATH + RETAINING WALL REVISIONS	22/01/15
11	GENERAL REVISIONS	22/09/15
10	FENCES + PATHWAY PLANTING AREAS REVISION	20/07/15
09	GENERAL REVISIONS	20/05/15
08	BASIN BRIDGE REMOVAL PATHS REVD	20/01/14
07	RIPIARIAN CORRIDOR BOY FENCE REMD	20/01/14
06	TENDER ISSUE	20/08/14
05	TENDER ISSUE	16/08/14
04	COORDINATION ISSUE	01/08/14
03	COORDINATION ISSUE	26/07/14
02	AMENDED DA ISSUE	19/11/13
01	DA ISSUE	08/11/13

client:
ARV Villages
 Anglican Retirement Villages
 PO Box 284, Castle Hill NSW 1765
 Level 2, Century Corporate Centre,
 82 Northwest Boulevard,
 Baulkham Hills NSW 2153

architect:
environa studio
 19/151, Foveaux Street, Surry Hills NSW 2010
 t: 02 9332 1211 f: 02 9332 1355
 e: info@environastudio.com.au

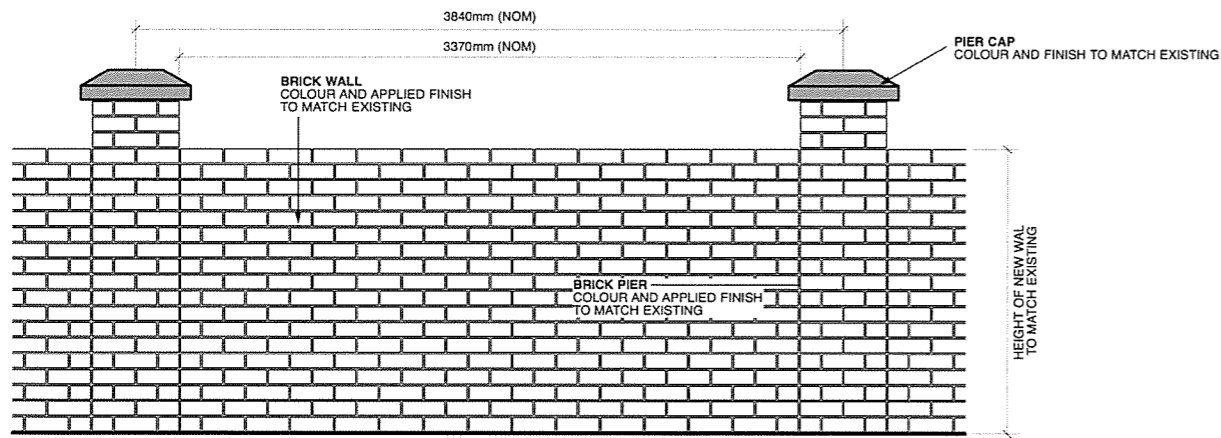
landscape architect:
JOHN LOCK & associates
 LANDSCAPE ARCHITECTURE
 Suite 3, 5 Earl Street, Mosman NSW 2088
 p: 02 9969 9866 e: landscape@bigpond.com



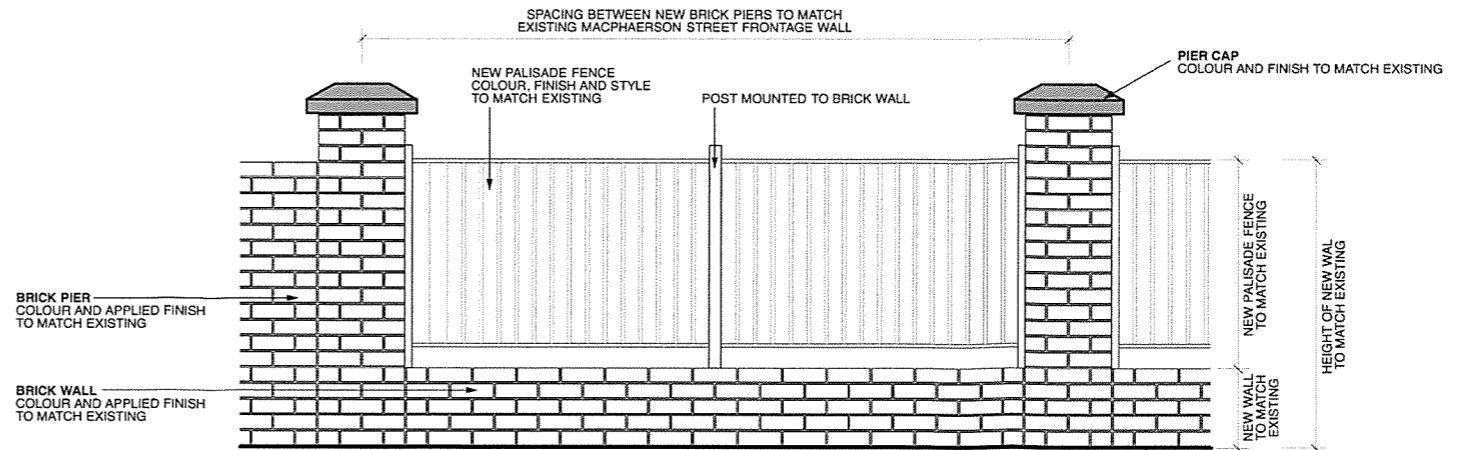
project:
**WARRIEWOOD BROOK
 WARRIEWOOD
 NSW 2102**

stage:
**STAGE 4, 5 and 6
 FIRE TRAIL
 HARDSCAPE PLAN**

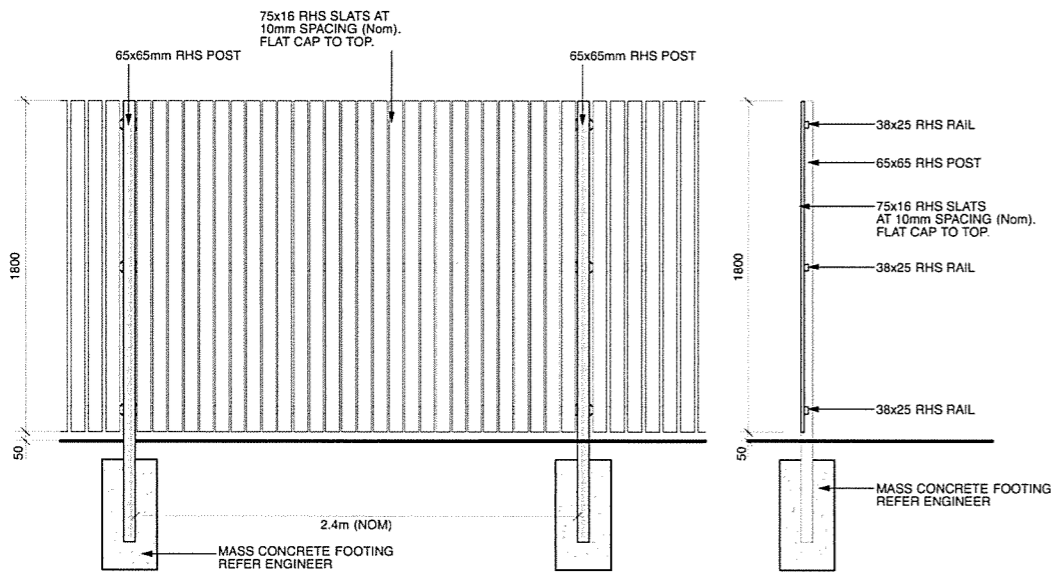
scale: 1:200 @ A1
 50% @ A3
 date: 01/02/2013
 job no.: 2001
 drawing no.: LP-1.5



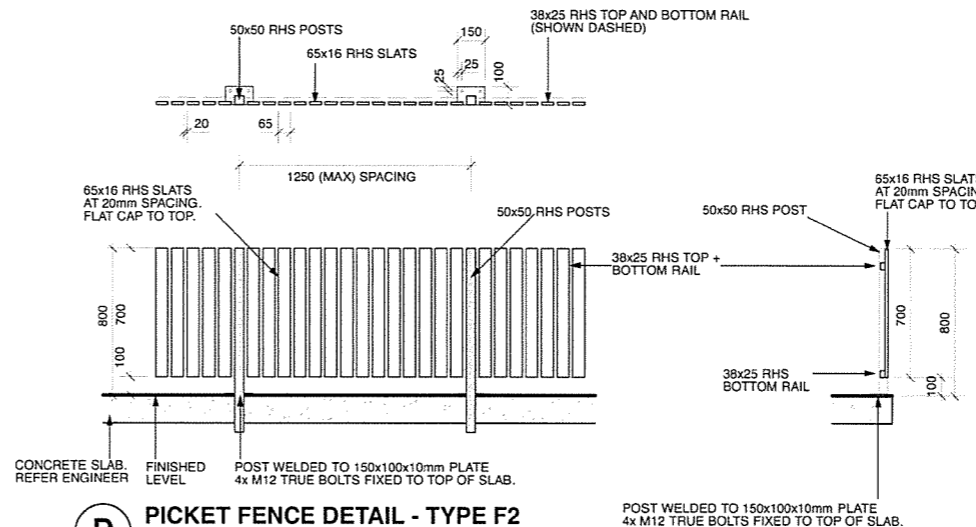
A BRICK WALL F7 - ELEVATION
1:20@A1



B LOW BRICK WALL + 1.2m PALISADE FENCE F7 - ELEVATION
1:20@A1

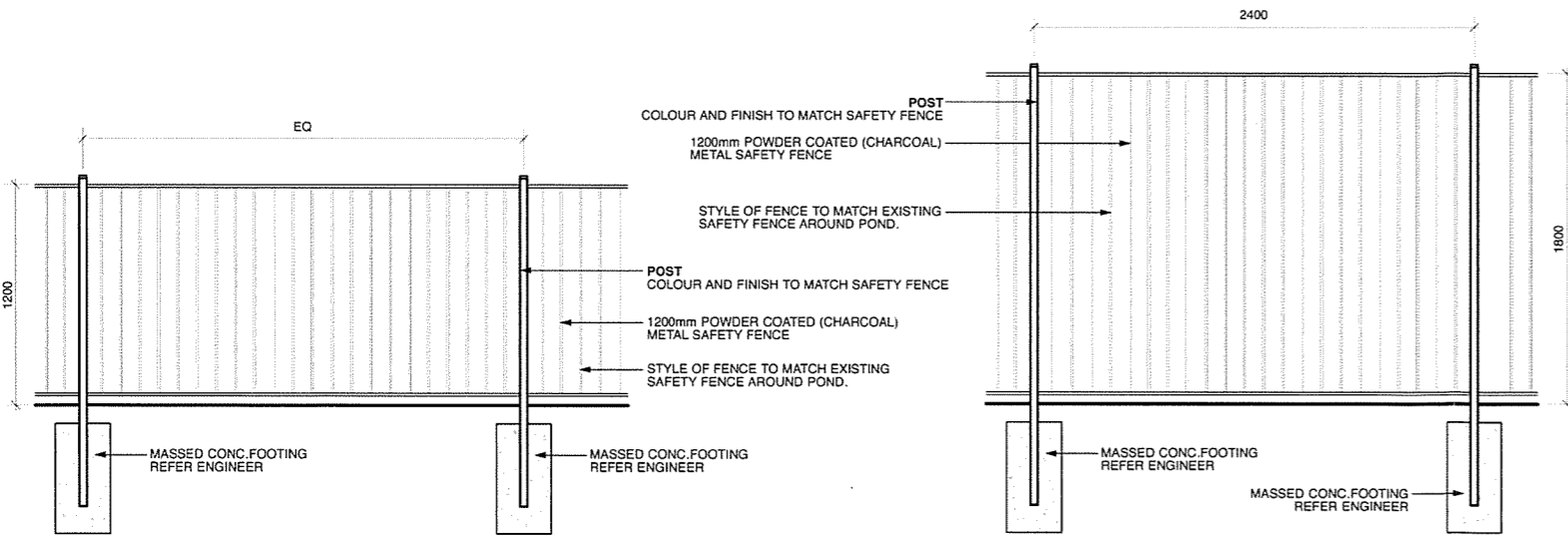


C 1.8m PICKET FENCE - ELEVATION - TYPE F1
1:20@A1

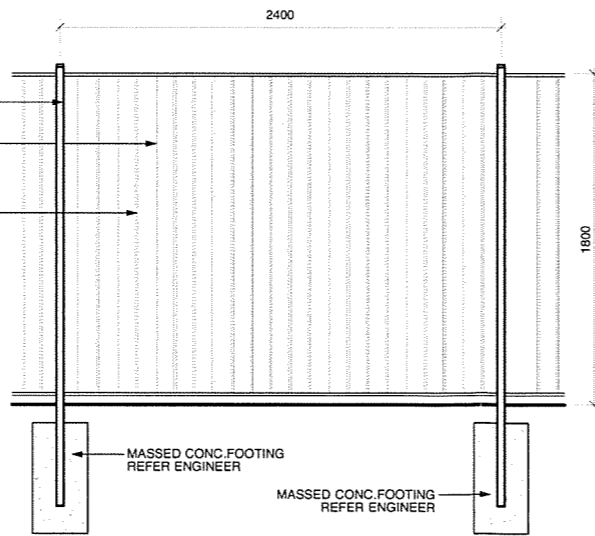


D PICKET FENCE DETAIL - TYPE F2
1:20@A1

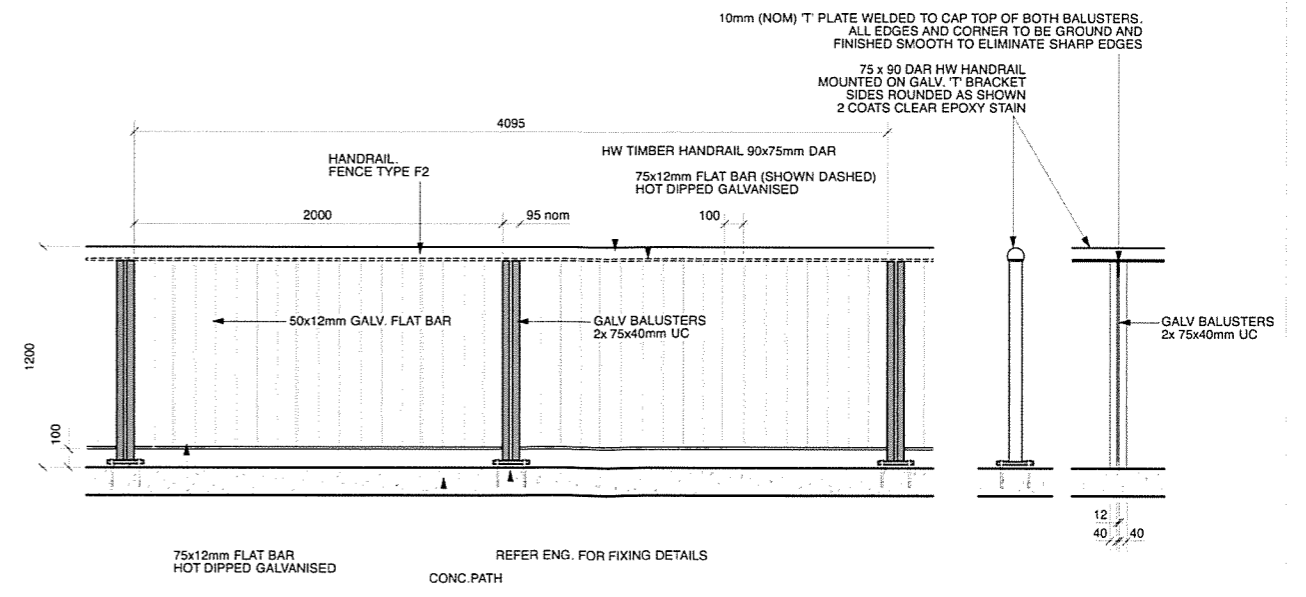
NOTE:
Where required and noted on the plans this fence will be 1000mm high to act as a balustrade



E 1.2m METAL PALISADE FENCE DETAIL - TYPE F5
1:20@A1



F 1.8m METAL PALISADE FENCE DETAIL - TYPE F6
1:20@A1



G TIMBER HANDRAIL + METAL FENCE DETAIL - TYPE F3
1:20@A1

revisions:	description	date
10	F2 PICKET FENCE REVISED	22/03/2016
09	FENCE HEIGHT REDUCED	02/07/2015
08	CG ISSUE	20/10/2014
07	TENDER ISSUE	20/08/2014
06	TENDER ISSUE	15/08/2014
05	COORDINATION ISSUE	01/08/2014
04	COORDINATION ISSUE	25/07/2014
03	AMENDED DA ISSUE	19/11/2013
02	AMENDED DA ISSUE	08/10/2013
01	DA ISSUE	30/08/2013

client:



Anglican Retirement Villages
PO Box 284, Castle Hill NSW 1765
Level 2, Century Corporate Centre,
62 Norwest Boulevard,
Baulkham Hills NSW 2153

architect:

environa studio

19/151, Foveaux Street, Surry Hills NSW 2010
t: 02 9332 1211 f: 02 9332 1355
e: info@environastudio.com.au

landscape architect:



JOHN LOCK & associates
LANDSCAPE ARCHITECTURE

Suite 3, 5 Earl Street, Mosman NSW 2088
p: 02 9959 9865 e: jlandesign@bigpond.com

project:

WARRIEWOOD BROOK
WARRIEWOOD
NSW 2102

stage:

STAGES 4, 5 and 6
FENCE DETAILS

scale: AS SHOWN @ A1

50% @ A3

date: 01/02/2013

job no.: drawing no.:

2001 LP-3.0

