

1 Site Plan (Roof) Notification
1:1000

- COMPLY WITH RELEVANT AUTHORITIES REQUIREMENTS
- COMPLY WITH THE BUILDING CODE OF AUSTRALIA
- COMPLY WITH ALL RELEVANT AUSTRALIAN STANDARDS
- DIMENSIONS IN MILLIMETRES
- USE FIGURES DIMENSIONS ONLY
- DO NOT SCALE
- IF DISCREPANCY EXISTS NOTIFY ARCHITECT
- COS - CONFIRM ON SITE
- IF IN DOUBT ASK




LEGEND

AD	ALUMINIUM DOOR	FG	FIXED GLASS
AW	ALUMINIUM WINDOW	FR	FRIEDGE
BG	BOX GUTTER	FW	FLOOR WASTE
BK	BRICK	GBK	GLAZED BRICK
BT	STEEL BALLUSTRADE	GBS	GLAZED BRICK SCREEN
BW	BLOCKWORK	JU	JOINERY UNIT
EX-FL	EXISTING FLOORING	LO	EXTERNAL LOUVRES - RETRACTABLE
CONC	CONCRETE	MAT	ENTRY MAT
CPT	CARPET	MC	METAL CLADDING
CT	CERAMIC TILE	MR	METAL ROOFING
DP	DOWNPIPE	PM	PERFORATED METAL
EXT	EXISTING	RF	RUBBER FLOORING

RWO
SC
TD
TW

RWO	RAINWATER OUTLET
SC	STEEL COLUMN
TD	TIMBER DOOR JOINERY
TW	TIMBER WINDOW JOINERY

LEGEND

	EXISTING ELEMENTS TO BE RETAINED
	EXISTING ELEMENTS TO BE DEMOLISHED
	PROPOSED NEW WORKS

CAD File: 1801_PIT_STAGE 01

ISSUE	DATE	REVISION
01	31/10/19	DA Issue

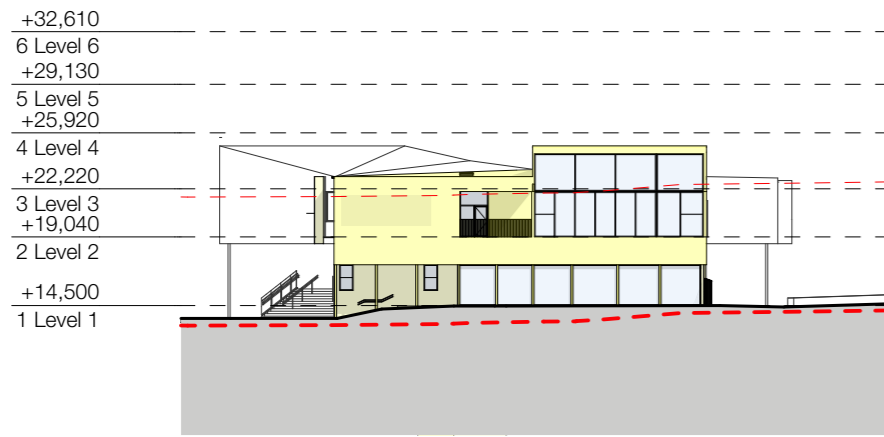
DRAWN BY KH CHECKED BY KH
IF ISSUE IS INITIALED AS CHECKED DRAWING CAN BE CONSIDERED APPROVED UNDER NMA QUALITY MANAGEMENT SYSTEM

The Pittwater House Schools
70 South Creek Rd, Collaroy NSW 2097
FOR **The Pittwater House Schools**

NEESON MURCUTT ARCHITECTS PTY LTD
L2 9 ROSLYN ST. POTTS POINT 2011 T. 8297 3590 F. 8297 3510
NOMINATED ARCHITECT: RACHEL NEESON No. 6692

NO	REV	TITLE	PHASE	SCALE	DATE
DA 12.1		NOTIFICATION PLAN	DA	1:1000 @A3	5/11/19

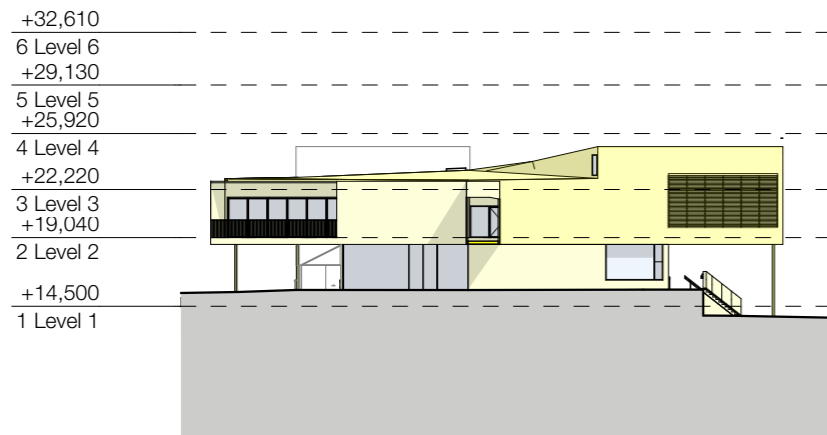
Copyright in all documents and drawings prepared by NEESON MURCUTT ARCHITECTS and in any works executed from those documents and drawings shall remain the property of, or on creation vest in NEESON MURCUTT ARCHITECTS, Pty Ltd



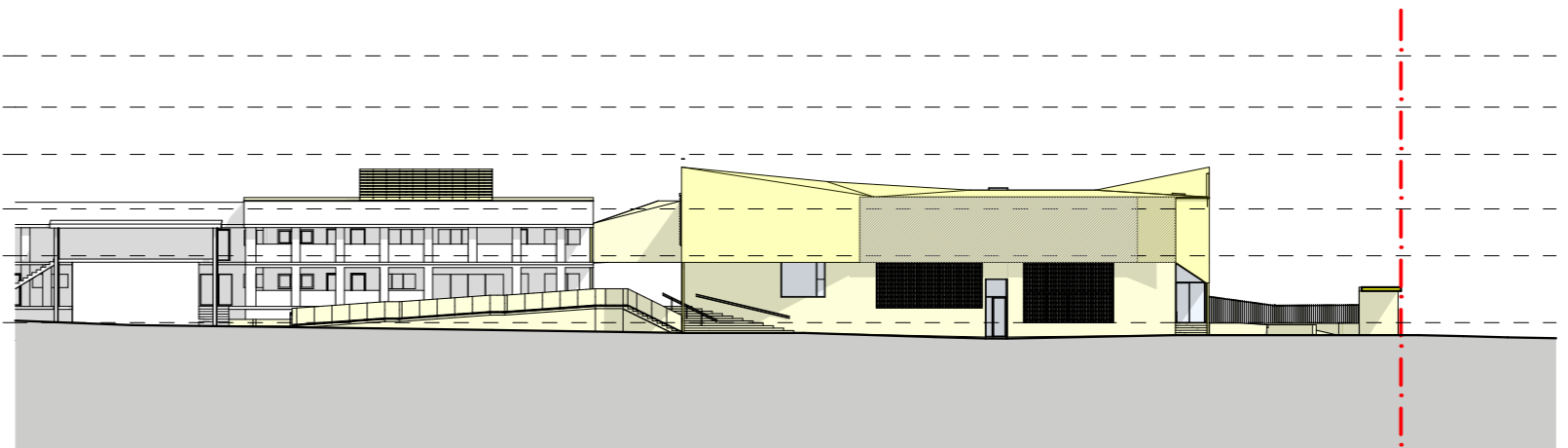
3 South Notification
1:500



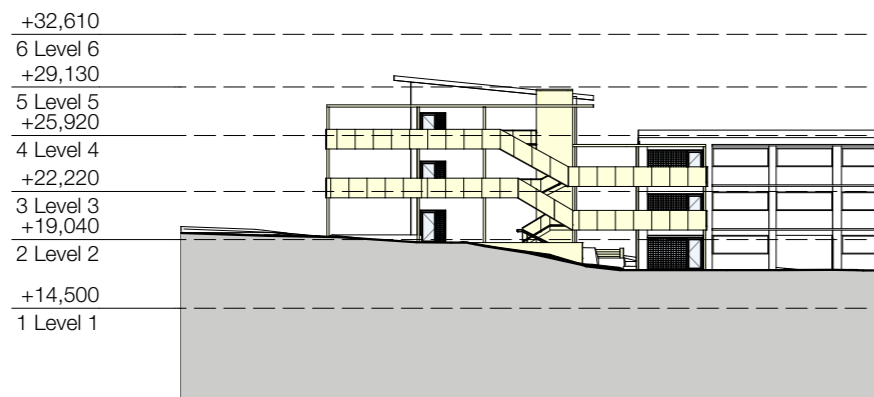
2 East Notification
1:500



1 North Notification
1:500



4 West Notification
1:500



5 Section 3 Notification
1:500

- COMPLY WITH RELEVANT AUTHORITIES REQUIREMENTS
- COMPLY WITH THE BUILDING CODE OF AUSTRALIA
- COMPLY WITH ALL RELEVANT AUSTRALIAN STANDARDS
- DIMENSIONS IN MILLIMETRES
- USE FIGURES DIMENSIONS ONLY
- DO NOT SCALE
- IF DISCREPANCY EXISTS NOTIFY ARCHITECT
- COS - CONFIRM ON SITE
- IF IN DOUBT ASK

LEGEND

AD ALUMINIUM DOOR	FG FIXED GLASS	RWO RAINWATER OUTLET
AW ALUMINIUM WINDOW	FR FRIDGE	SC STEEL COLUMN
BG BOX GUTTER	FW FLOOR WASTE	TD TIMBER DOOR JOINERY
BK BRICK	GBK GLAZED BRICK	TW TIMBER WINDOW JOINERY
BT STEEL BALUSTRADE	GBS GLAZED BRICK SCREEN	
BW BLOCKWORK	JU JOINERY UNIT	
EX-FL EXISTING FLOORING	LO EXTERNAL LOUVRES - RETRACTABLE	
CONC CONCRETE	MAT ENTRY MAT	
CPT CARPET	MC METAL CLADDING	
CT CERAMIC TILE	MR METAL ROOFING	
DP DOWNPIPE	PM PERFORATED METAL	
EXT EXISTING	RF RUBBER FLOORING	

LEGEND

EXISTING ELEMENTS TO BE RETAINED
EXISTING ELEMENTS TO BE DEMOLISHED
PROPOSED NEW WORKS

CAD File: 1801_PITT_STAGE 01

ISSUE	DATE	REVISION
01	31/10/19	DA Issue

DRAWN BY KH CHECKED BY KH
IF ISSUE IS INITIALED AS CHECKED DRAWING CAN BE CONSIDERED APPROVED UNDER NMA QUALITY MANAGEMENT SYSTEM

The Pittwater House Schools
70 South Creek Rd, Collaroy NSW 2097
FOR The Pittwater House Schools

NEESON MURCUTT ARCHITECTS PTY LTD
L2 9 ROSLYN ST. POTTS POINT 2011 T. 8297 3590 F. 8297 3510
NOMINATED ARCHITECT: RACHEL NEESON No. 6692

NO	REV	TITLE	PHASE	SCALE	DATE
DA 12.2		NOTIFICATION PLAN	DA	1:500 @A3	5/11/19

Copyright in all documents and drawings prepared by NEESON MURCUTT ARCHITECTS and in any works executed from those documents and drawings shall remain the property of, or on creation vest in NEESON MURCUTT ARCHITECTS. Pty Ltd ©