



G:\2023\23082 - 54-58 Beaconsfield Street, Newport\Drawings\23082-V1.7-SP.dwg
 Plotted by Genesis05

54-58 BEACONSFIELD STREET, NEWPORT
GROUND FLOOR LAYOUT
CAR PARK DESIGN ASSESSMENT

DRAWING REF NO. 23082-V1.7-SP

SHEET NO. 01 OF 10

ISSUE DATE 21 August 2024

DESIGNED BY
N.BORJA/L.NG

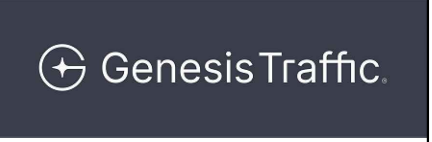
REVIEWED BY
B.LO

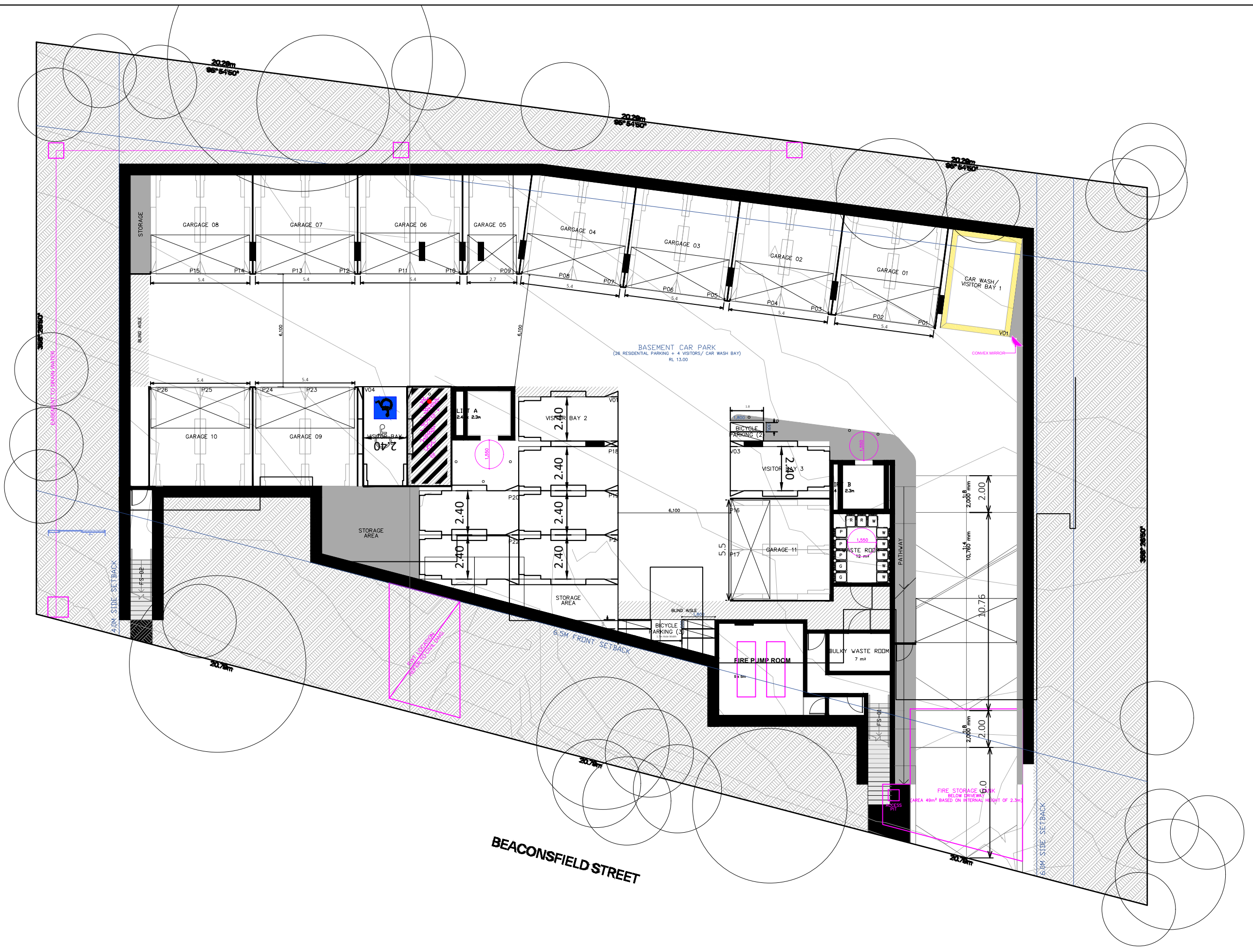
SCALE
A3 0 2.5 5.0 1:250



PRELIMINARY PLAN
 FOR DISCUSSION PURPOSES
 ONLY SUBJECT TO CHANGE
 WITHOUT NOTIFICATION

WARNING
 THE LOCATION OF UNDERGROUND SERVICES
 ARE APPROXIMATE ONLY.
 THE EXACT LOCATIONS SHALL BE DETERMINED ON SITE.
 ALL EXISTING SERVICES SHOWN ARE NOT GUARANTEED.





G:\2023\23082 - 54-58 Beaconsfield Street, Newport\Drawings\23082-V1.7-SP.dwg
 Plotted by Genesis05

54-58 BEACONSFIELD STREET, NEWPORT
BASEMENT LEVEL LAYOUT
CAR PARK DESIGN ASSESSMENT

DRAWING REF NO. 23082-V1.7-SP

SHEET NO. 02 OF 10

ISSUE DATE 21 August 2024

DESIGNED BY
N.BORJA/LNG

REVIEWED BY
B.LO

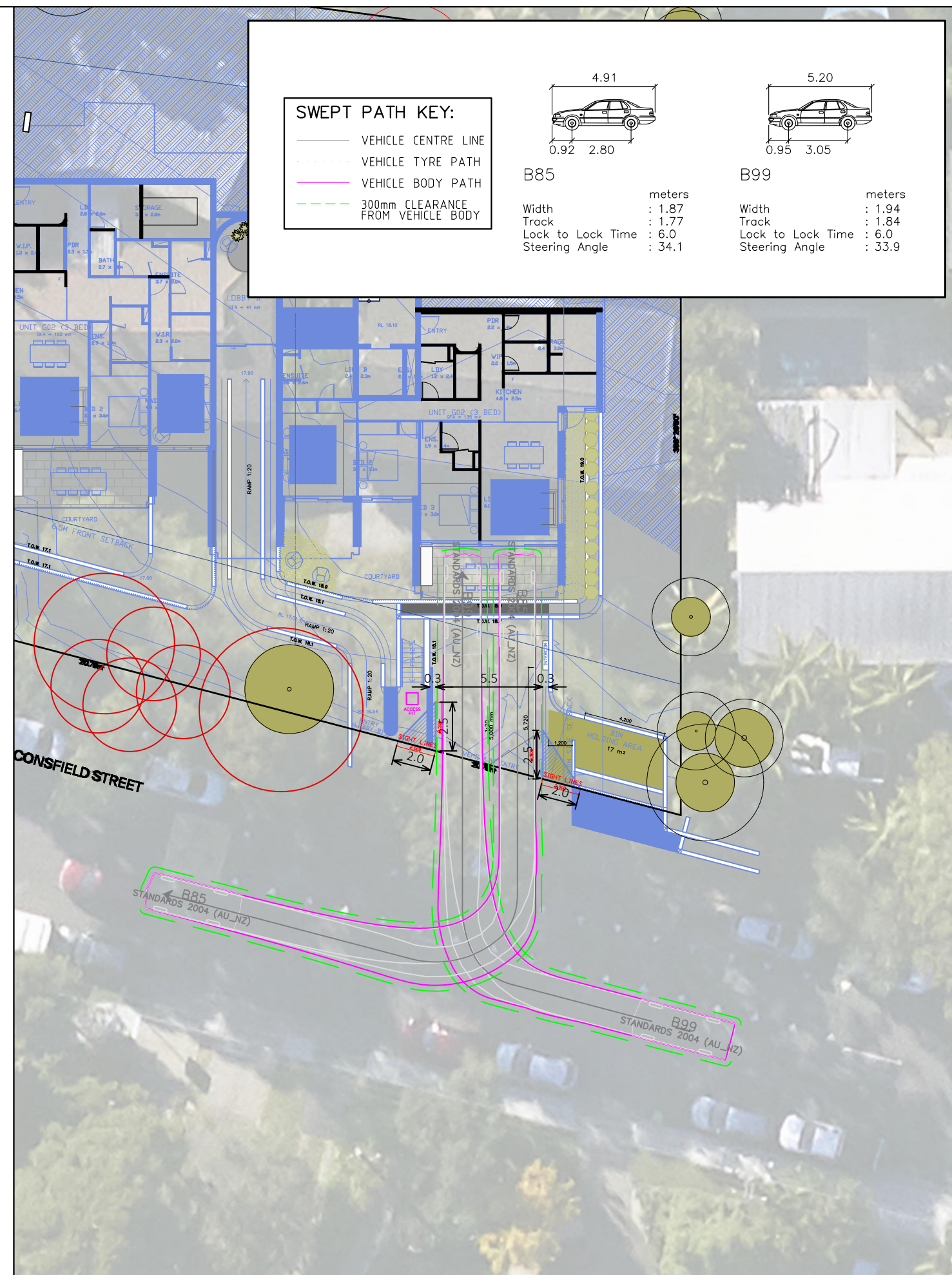
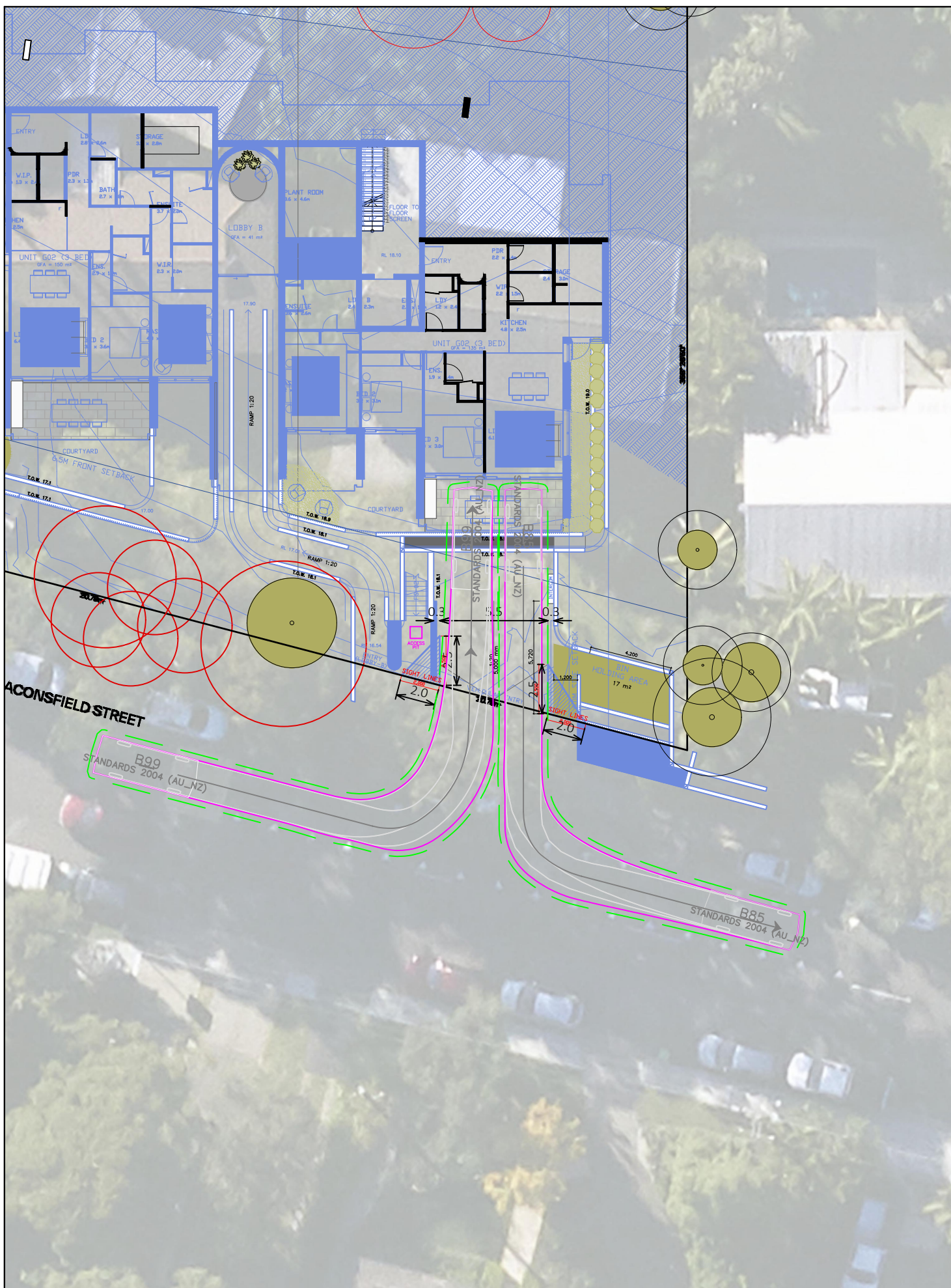
SCALE
A3 0 2.0 4.0 1:200



PRELIMINARY PLAN
 FOR DISCUSSION PURPOSES
 ONLY SUBJECT TO CHANGE
 WITHOUT NOTIFICATION

WARNING
 THE LOCATION OF UNDERGROUND SERVICES
 ARE APPROXIMATE ONLY
 THE EXACT LOCATION SHALL BE DETERMINED ON SITE.
 ALL EXISTING SERVICES SHOULD BE NOT GUARANTEED.





SWEPT PATH KEY:

- VEHICLE CENTRE LINE
- VEHICLE TYRE PATH
- VEHICLE BODY PATH
- - - 300mm CLEARANCE FROM VEHICLE BODY



Vehicle	Width (meters)	Track (meters)	Lock to Lock Time (meters)	Steering Angle (meters)
B85	1.87	1.77	6.0	34.1
B99	1.94	1.84	6.0	33.9

G:\2023\23082 - 54-58 Beaconsfield Street, Newport\Drawings\23082-V1.7-SP.dwg
Printed by Genesis05

54-58 BEACONSFIELD STREET, NEWPORT
GROUND FLOOR LAYOUT
SWEPT PATH ASSESSMENT
DRAWING REF NO. 23082-V1.7-SP

SHEET NO. 03 OF 10

ISSUE DATE 21 August 2024

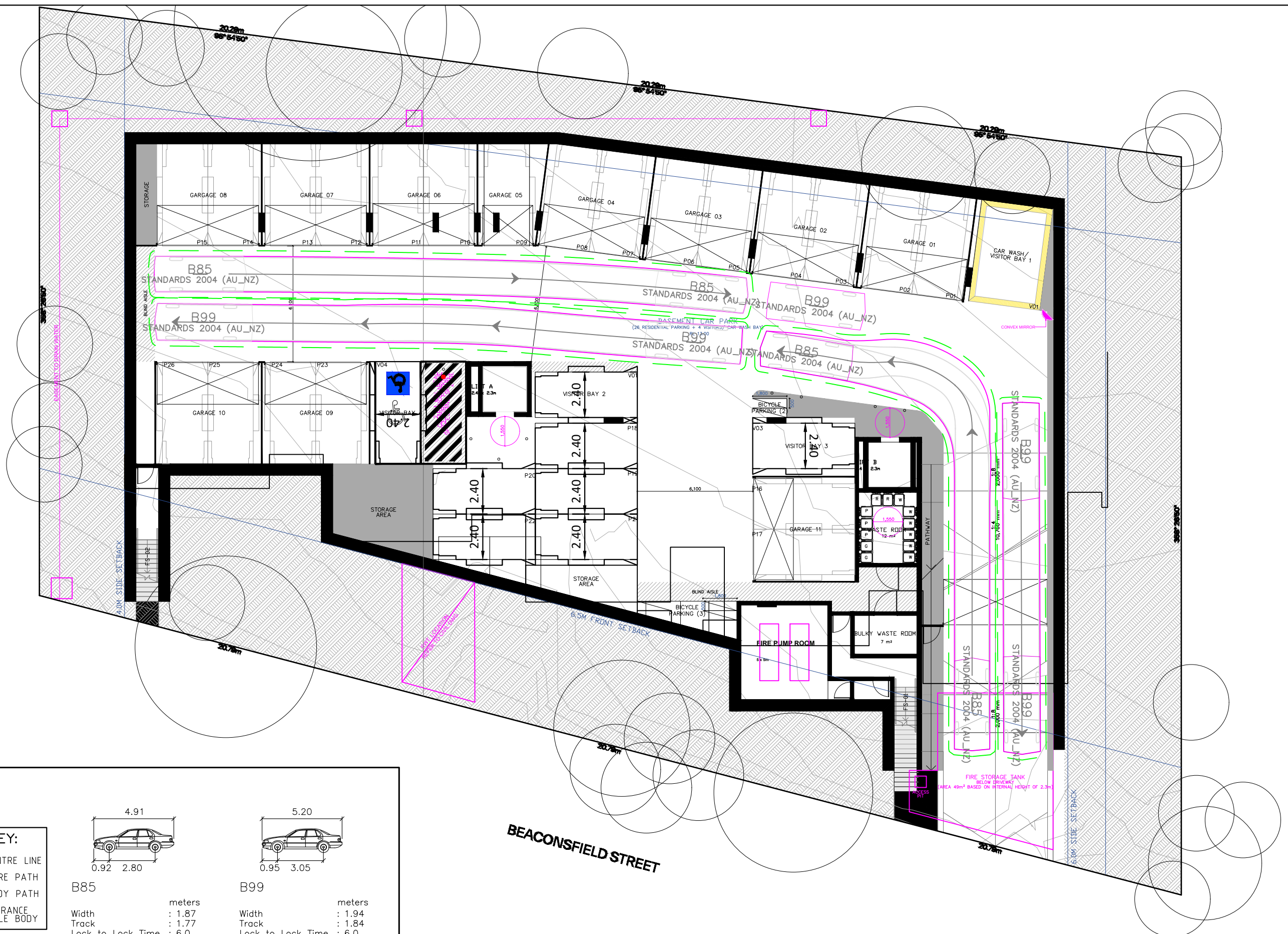
DESIGNED BY N.BORJA/L.NG
REVIEWED BY B.LO
SCALE A3 0 2.5 5.0 1:250



PRELIMINARY PLAN
FOR DISCUSSION PURPOSES
ONLY SUBJECT TO CHANGE
WITHOUT NOTIFICATION

WARNING
THE LOCATION OF UNDERGROUND SERVICES ARE APPROXIMATE ONLY.
THE EXACT LOCATION SHALL BE DETERMINED ON SITE.
ALL EXISTING SERVICES SHOWN ARE NOT GUARANTEED.





SWEPT PATH KEY:

- VEHICLE CENTRE LINE
- VEHICLE TYRE PATH
- VEHICLE BODY PATH
- 300mm CLEARANCE FROM VEHICLE BODY

	B85	B99
Width	4.91	5.20
Track	1.87	1.94
Lock to Lock Time	6.0	6.0
Steering Angle	34.1	33.9

BEACONSFIELD STREET

G:\2023\23082 - 54-58 Beaconsfield Street, Newport\Drawings\31082-V1.7-SP.dwg
Printed by Genesis05

54-58 BEACONSFIELD STREET, NEWPORT
BASEMENT LEVEL LAYOUT
CAR PARK DESIGN ASSESSMENT - CIRCULATION
 DRAWING REF NO. 23082-V1.7-SP

SHEET NO. 04 OF 10

ISSUE DATE 21 August 2024

DESIGNED BY
N.BORJA/L.NG

REVIEWED BY
B.LO

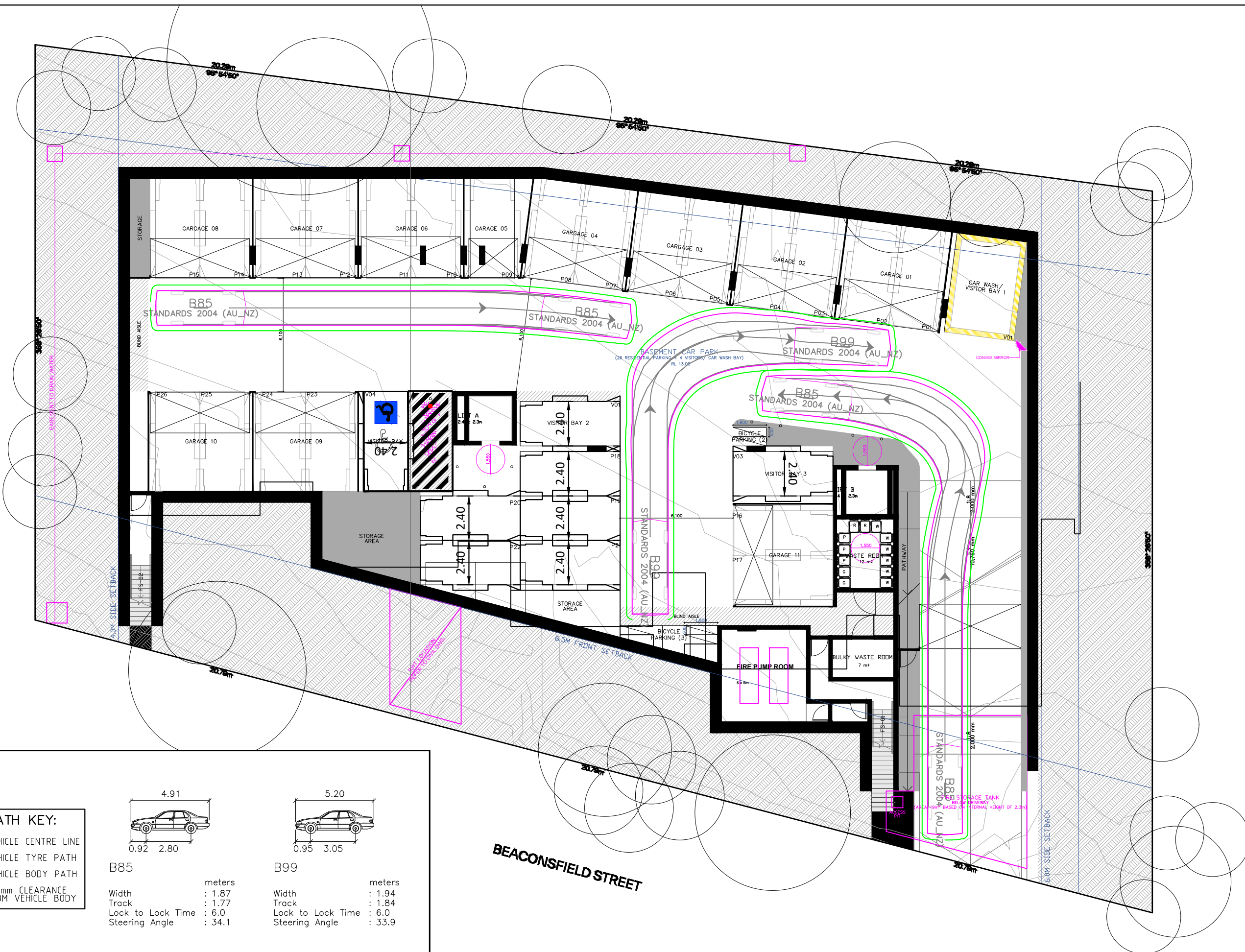
SCALE
A3 0 20 40 1:200



PRELIMINARY PLAN
 FOR DISCUSSION PURPOSES
 ONLY SUBJECT TO CHANGE
 WITHOUT NOTIFICATION

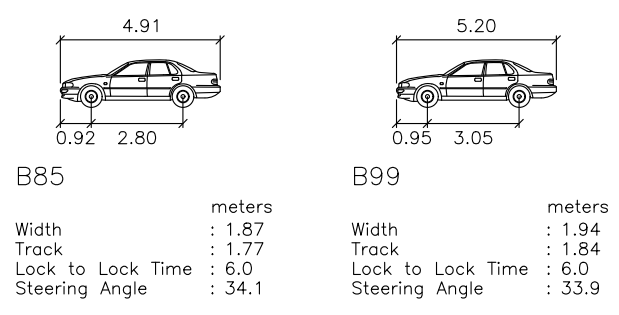
WARNING
 THE LOCATION OF UNDERGROUND SERVICES
 ARE APPROXIMATE ONLY
 THE EXACT LOCATION SHALL BE DETERMINED ON SITE.
 ALL EXISTING SERVICES SHOWN ARE NOT GUARANTEED.





SWEPT PATH KEY:

- VEHICLE CENTRE LINE
- VEHICLE TYRE PATH
- VEHICLE BODY PATH
- - - 300mm CLEARANCE FROM VEHICLE BODY



BEACONSFIELD STREET

G:\2023\23082 - 54-58 Beaconsfield Street, Newport\Drawings\33082-V1.7-SP.dwg
Printed by Genesis05

54-58 BEACONSFIELD STREET, NEWPORT
BASEMENT LEVEL LAYOUT
CAR PARK DESIGN ASSESSMENT - CIRCULATION

DRAWING REF NO. 23082-V1.7-SP

SHEET NO. 05 OF 10

ISSUE DATE 21 August 2024

DESIGNED BY
N.BORJA/L.NG

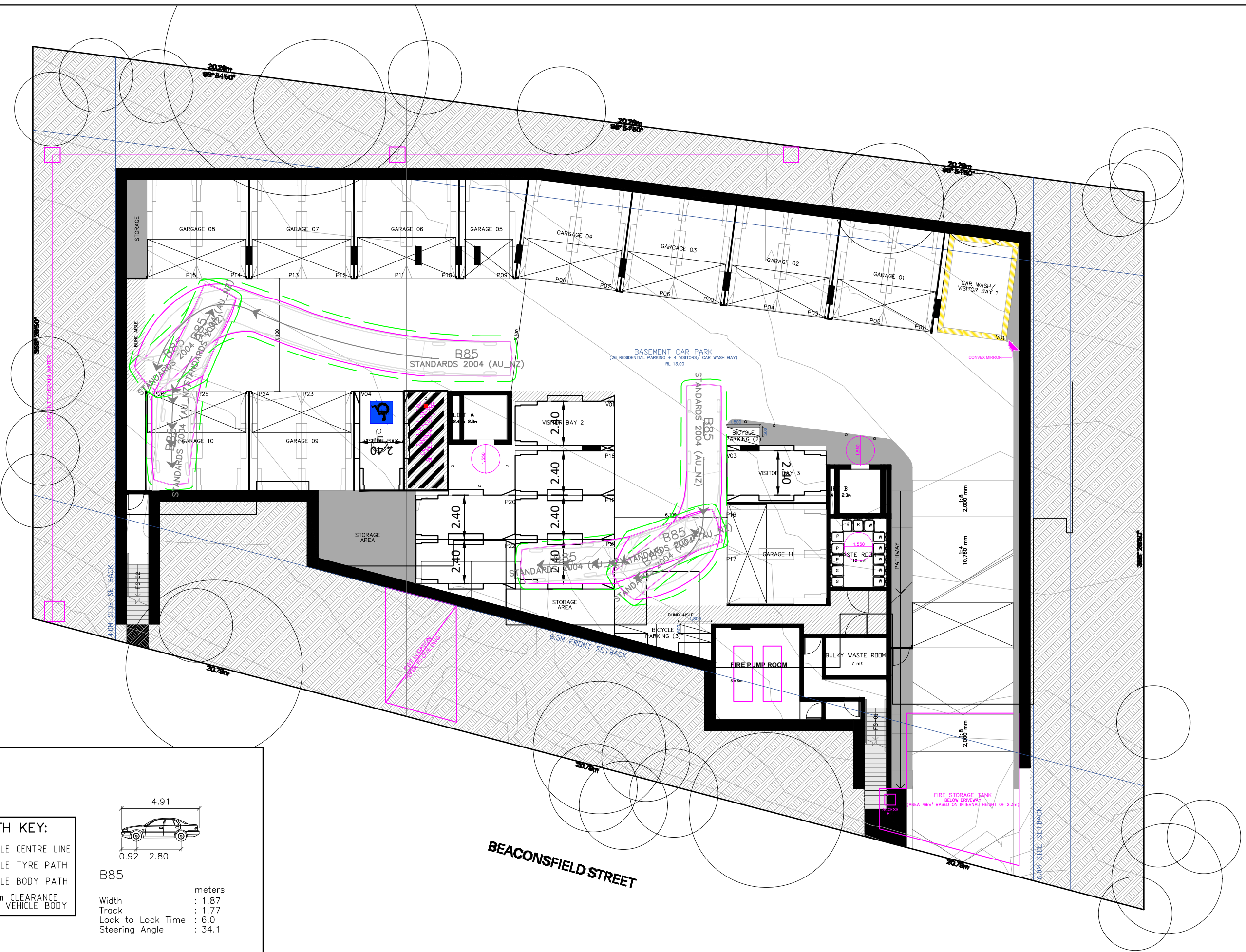
REVIEWED BY
B.L.O



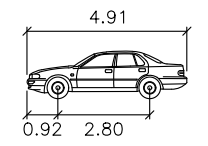
PRELIMINARY PLAN
 FOR DISCUSSION PURPOSES
 ONLY SUBJECT TO CHANGE
 WITHOUT NOTIFICATION

WARNING
 THE LOCATION OF UNDERGROUND SERVICES
 ARE APPROXIMATE ONLY
 THE EXACT LOCATION SHALL BE DETERMINED ON SITE.
 ALL EXISTING SERVICES SHOWN ARE NOT GUARANTEED.





- SWEPT PATH KEY:**
- VEHICLE CENTRE LINE
 - VEHICLE TYRE PATH
 - VEHICLE BODY PATH
 - 300mm CLEARANCE FROM VEHICLE BODY



B85

Width	: 1.87	meters
Track	: 1.77	
Lock to Lock Time	: 6.0	
Steering Angle	: 34.1	

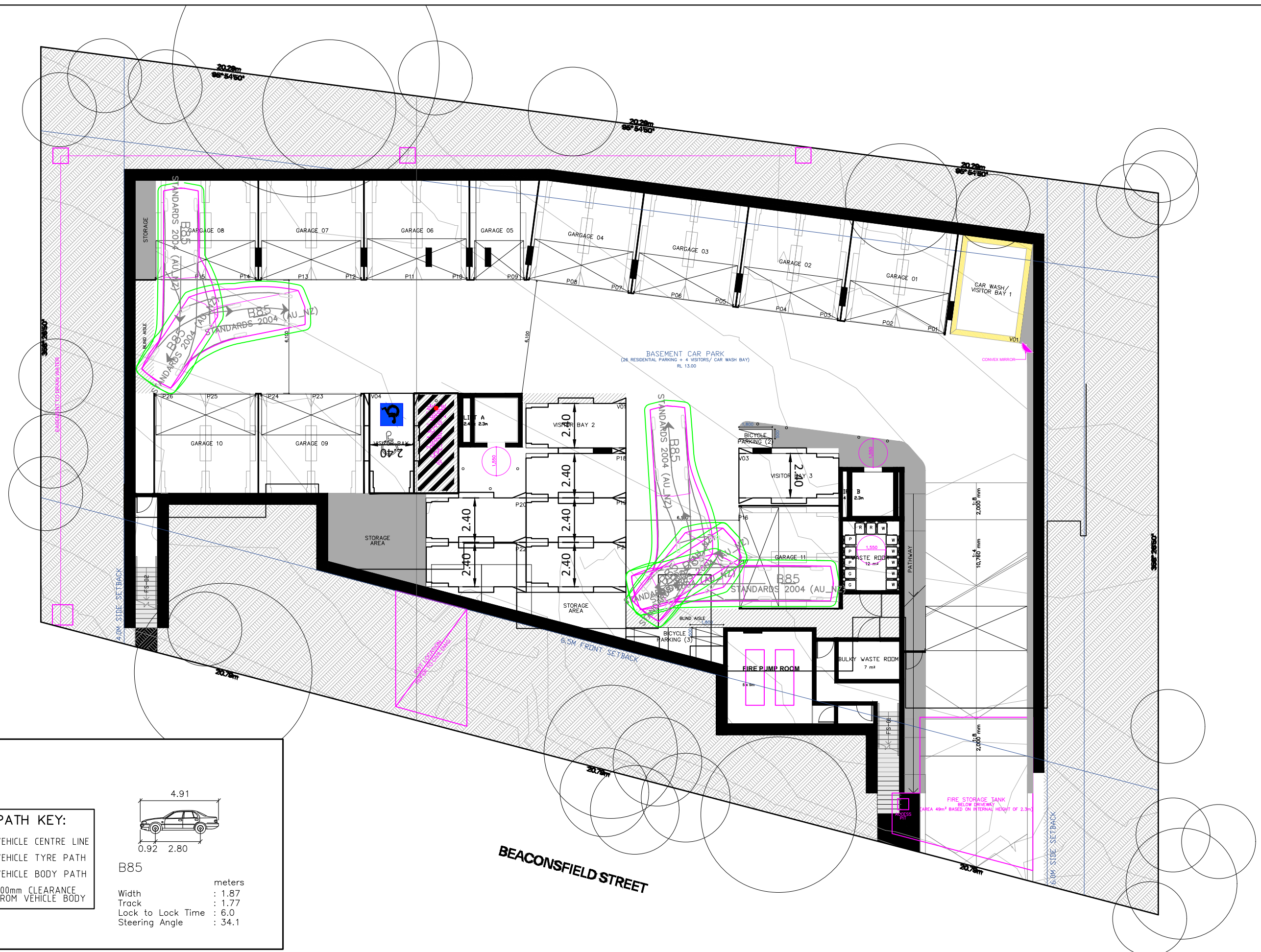
G:\2023\23082 - 54-58 Beaconsfield Street, Newport\Drawings\23082-V1.7-SP.dwg



PRELIMINARY PLAN
 FOR DISCUSSION PURPOSES
 ONLY SUBJECT TO CHANGE
 WITHOUT NOTIFICATION

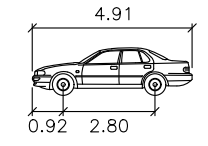
WARNING
 THE LOCATION OF UNDERGROUND SERVICES
 ARE APPROXIMATE ONLY
 THE EXACT LOCATION SHALL BE VERIFIED ON SITE.
 ALL EXISTING SERVICES SHOULD BE NOT GUARANTEED.





SWEEP PATH KEY:

- VEHICLE CENTRE LINE
- VEHICLE TYRE PATH
- VEHICLE BODY PATH
- - - 300mm CLEARANCE FROM VEHICLE BODY



B85

Width	: 1.87	meters
Track	: 1.77	
Lock to Lock Time	: 6.0	
Steering Angle	: 34.1	

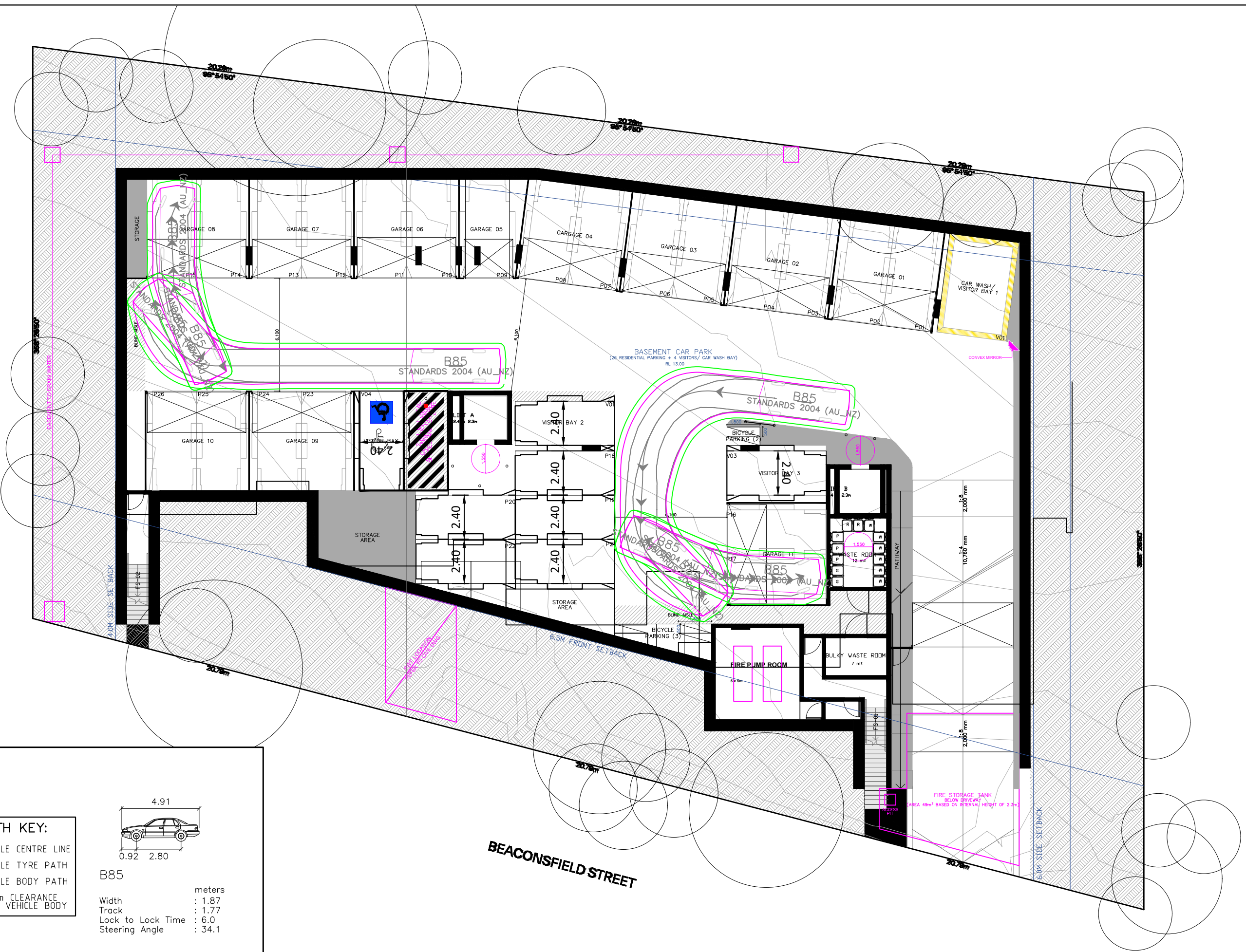
G:\2023\23082 - 54-58 Beaconsfield Street, Newport\Drawings\33082\V1.7-SP.dwg



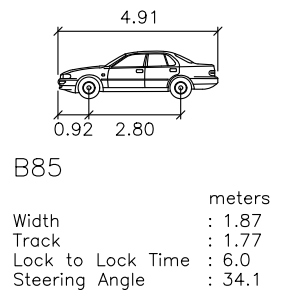
PRELIMINARY PLAN
 FOR DISCUSSION PURPOSES
 ONLY SUBJECT TO CHANGE
 WITHOUT NOTIFICATION

WARNING
 THE LOCATION OF UNDERGROUND SERVICES
 ARE APPROXIMATE ONLY
 THE EXACT LOCATION SHALL BE CHECKED ON SITE.
 ALL EXISTING SERVICES SHOULD BE NOT GUARANTEED.





- SWEPT PATH KEY:**
- VEHICLE CENTRE LINE
 - VEHICLE TYRE PATH
 - VEHICLE BODY PATH
 - 300mm CLEARANCE FROM VEHICLE BODY

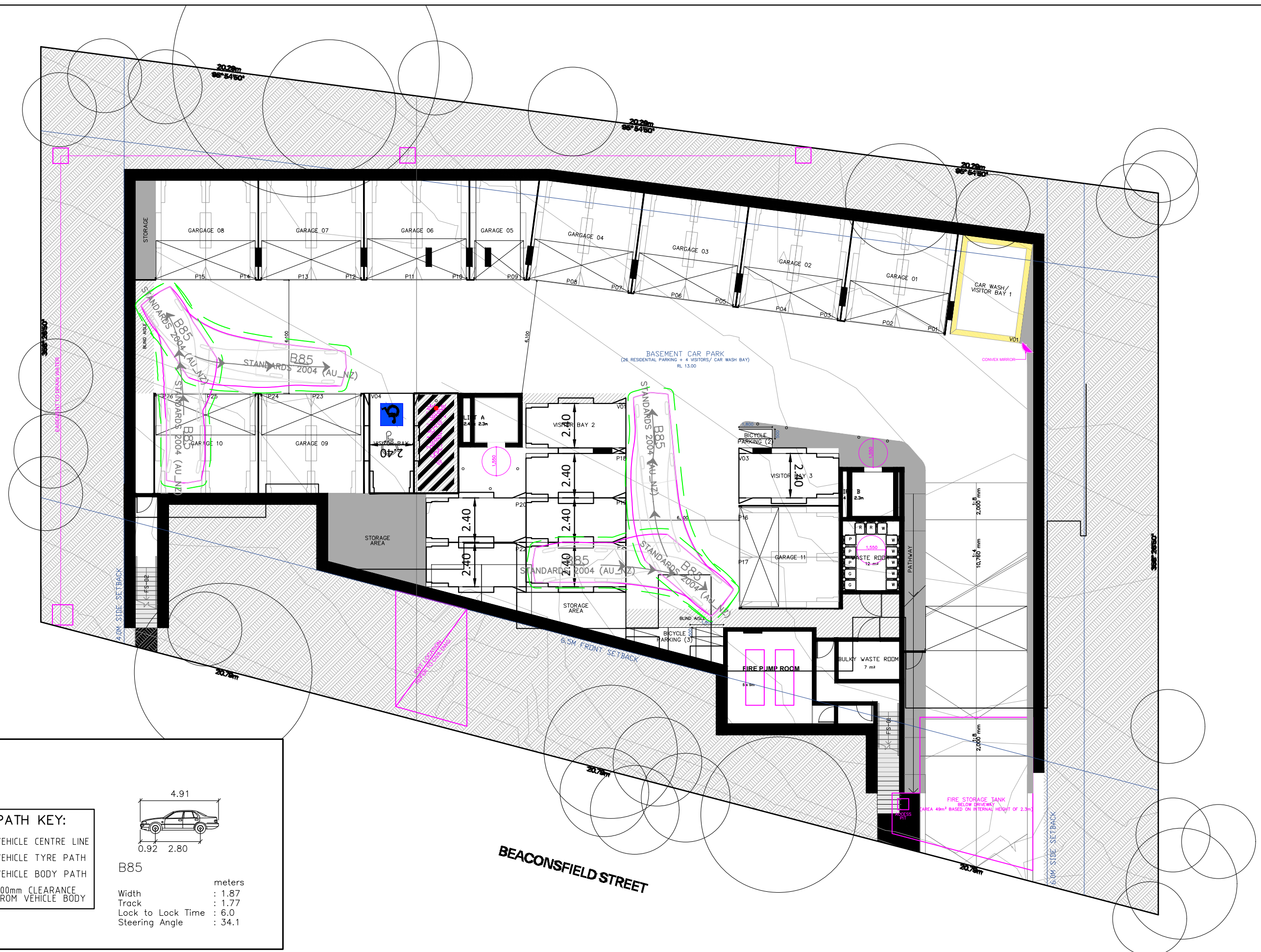


G:\2023\23082 - 54-58 Beaconsfield Street, Newport\Drawings\33082-V1.7-SP.dwg

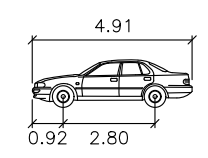


PRELIMINARY PLAN
 FOR DISCUSSION PURPOSES
 ONLY SUBJECT TO CHANGE
 WITHOUT NOTIFICATION

WARNING
 THE LOCATION OF UNDERGROUND SERVICES
 ARE APPROXIMATE ONLY
 THE EXACT LOCATION SHALL BE CHECKED ON SITE.
 ALL EXISTING SERVICES SHOWN ARE NOT GUARANTEED.



- SWEEP PATH KEY:**
- VEHICLE CENTRE LINE
 - VEHICLE TYRE PATH
 - VEHICLE BODY PATH
 - 300mm CLEARANCE FROM VEHICLE BODY



B85

Width	: 1.87	meters
Track	: 1.77	
Lock to Lock Time	: 6.0	
Steering Angle	: 34.1	

G:\2023\23082 - 54-58 Beaconsfield Street, Newport\Drawings\33082-V1.7-SP.dwg

54-58 BEACONSFIELD STREET, NEWPORT
BASEMENT LEVEL LAYOUT
CAR PARK DESIGN ASSESSMENT - VEHICLE EXITING THE CAR SPACE
 DRAWING REF NO. 23082-V1.7-SP SHEET NO. 09 OF 10

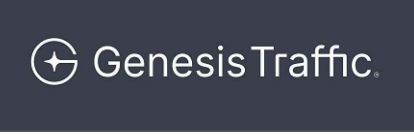
ISSUE DATE 21 August 2024

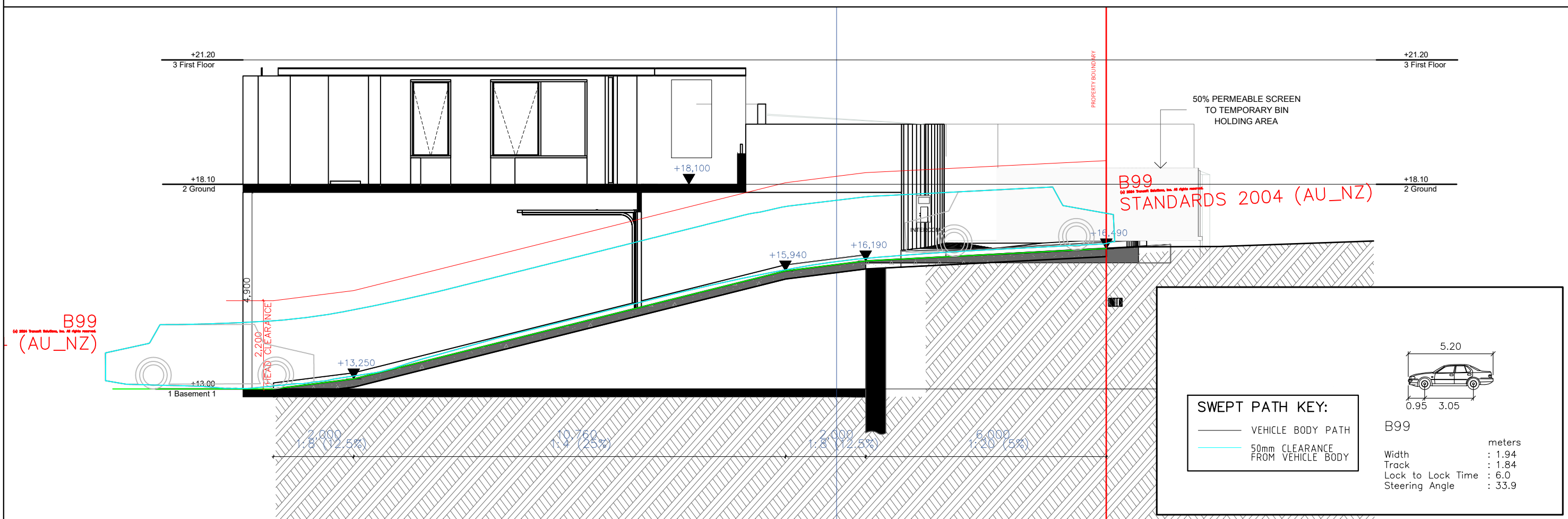
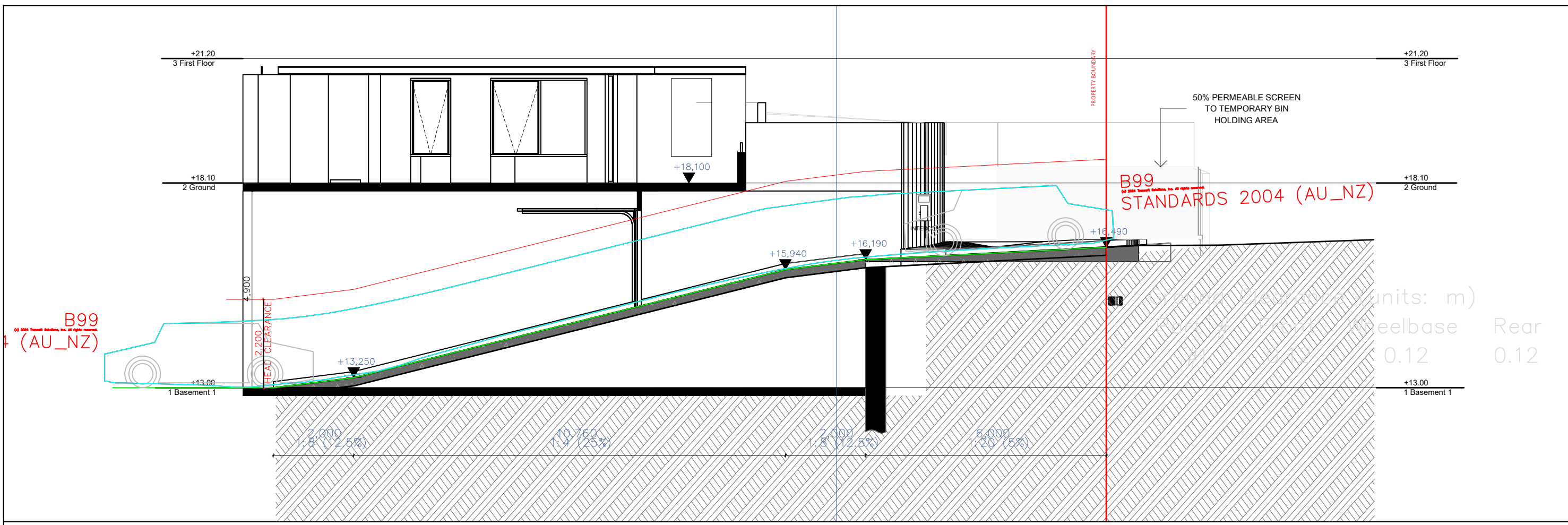
DESIGNED BY N.BORJA/L.NG REVIEWED BY B.L.O
 SCALE A3 0 20 40 1:200



PRELIMINARY PLAN
 FOR DISCUSSION PURPOSES
 ONLY SUBJECT TO CHANGE
 WITHOUT NOTIFICATION

WARNING
 THE LOCATION OF UNDERGROUND SERVICES
 ARE APPROXIMATE ONLY
 THE EXACT LOCATION SHALL BE VERIFIED ON SITE.
 ALL EXISTING SERVICES SHOULD BE NOT GUARANTEED.





G:\2023\23082 - 54-58 Beaconsfield Street, Newport\Drawings\23082-V1.7-SP.dwg
Printed by Genesis05

54-58 BEACONSFIELD STREET, NEWPORT
GROUND FLOOR LAYOUT
CAR PARK DESIGN ASSESSMENT
 DRAWING REF NO. 23082-V1.7-SP

SHEET NO. 10 OF 10

ISSUE DATE 21 August 2024

DESIGNED BY
N.BORJA/L.NG
 SCALE A3 0 10 20 1:100
 REVIEWED BY
B.L.O



PRELIMINARY PLAN
 FOR DISCUSSION PURPOSES
 ONLY SUBJECT TO CHANGE
 WITHOUT NOTIFICATION

WARNING
 THE LOCATION OF UNDERGROUND SERVICES
 ARE APPROXIMATE ONLY.
 THE EXACT LOCATION SHALL BE PROVIDED ON DATE.
 ALL EXISTING SERVICES SHOWN ARE NOT GUARANTEED.

