

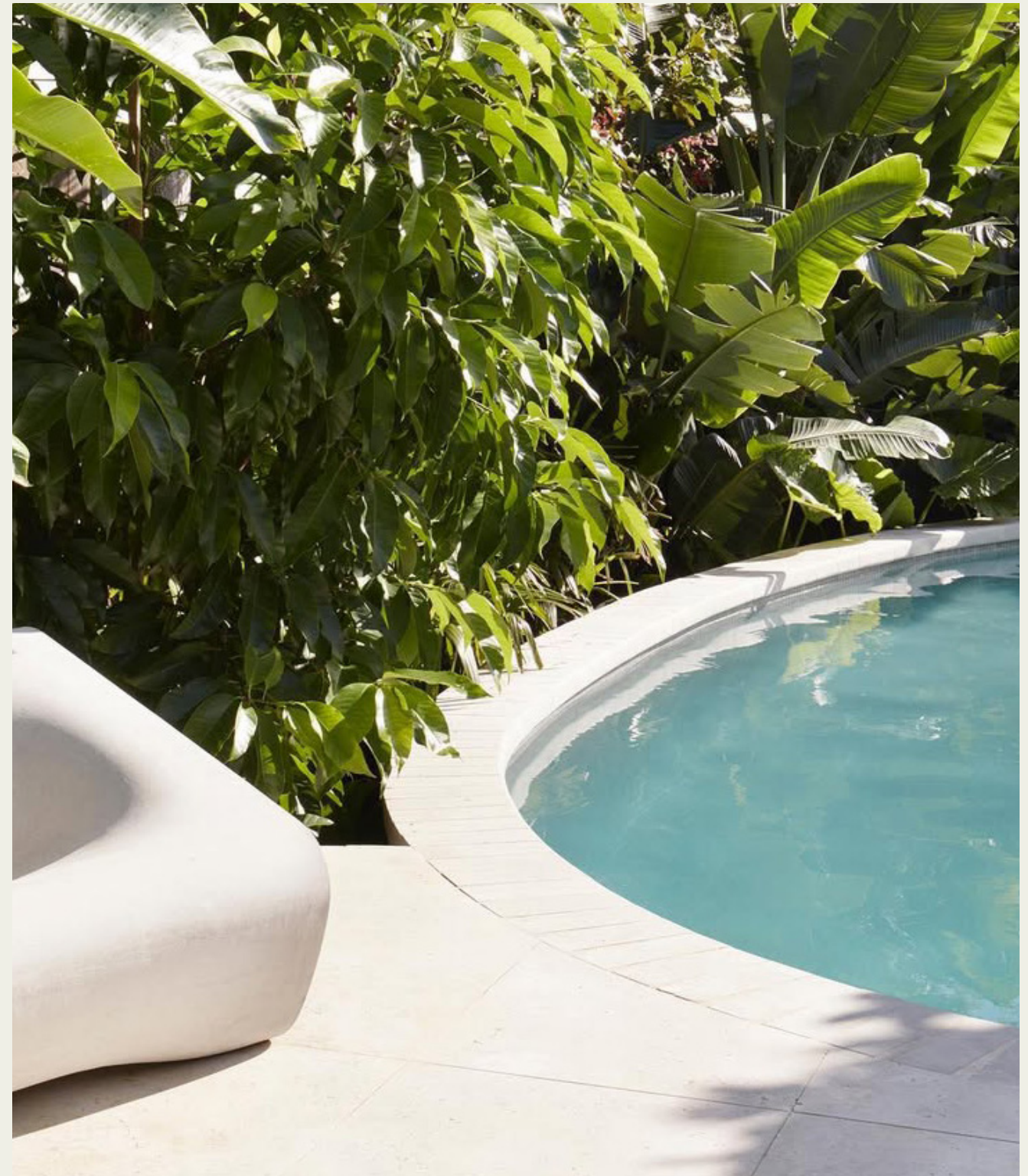
# WYER & CO

LANDSCAPE CONCEPT

## I PHYLLIS STREET, NORTH CURL CURL

PREPARED FOR  
Shane & Ceinwen Lawrence

18.12.2024  
Revision 01

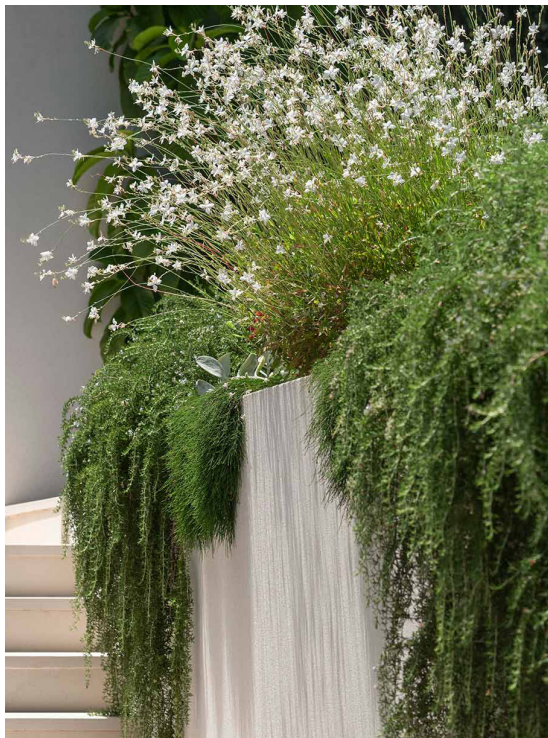


## LANDSCAPE CONCEPT



# INSPIRATION PALETTE

- 1. Mixed native/exotic garden, with large stone boulders to tie in with existing site conditions
- 2. Cascading groundcovers to soften balcony planters
- 3. Layered native planting with turfed verge
- 4. Vertical timber fence, concealed within planting
- 5. Soft flowering grasses



2.



3.



1.



4.



5.



# INSPIRATION PALETTE

- 1. Mixed planting with seasonal fragrance and colour
- 2. Central feature tree with blue/silver foliage
- 3. Swimming pool surrounding by lush, layered planting
- 4. Outdoor shower set within garden
- 5. Built in lounge & seating



2.



3.



1.



4.



5.



# LANDSCAPE DEVELOPMENT APPLICATION PLANS

## COUNCIL REQUIREMENT'S - NORTHERN BEACHES COUNCIL

THE LANDSCAPE PLAN IS IN GENERAL ACCORDANCE WITH COUNCIL PLANNING CONTROLS:

- DCP (WARRINGAH DEVELOPMENT CONTROL PLAN 2011)
- PART DI LANDSCAPED OPEN SPACE AND BUSHLAND SETTING
- PART EI PRESERVATION OF TREES OR BUSHLAND VEGETATION

## CONTROLS

SITE AREA: 479.9m²

LANDSCAPED OPEN SPACE REQUIRED: 40% OF SITE = 191.9m²

EXISTING LANDSCAPE OPEN SPACE = 72.5m² (15.1%)  
PROPOSED LANDSCAPE OPEN SPACE = 154.8m² (32.3%)

PROPOSED LANDSCAPE ON STRUCTURE (EXCLUDING FROM LANDSCAPE OPEN SPACE) = 48.9m²

## LANDSCAPE INSTALLATION SPECIFICATION

### PLANTER BEDS

- Soil for plantings over slab or contained areas. Minimum soil depths for planting on any slab:
- Trees: Min 800mm excluding 75mm mulch
- Shrubs: Min 600mm excluding 75mm mulch
- Groundcovers & Turf: Min 300mm
- Suitable drainage implemented through use of ag lines, drainage flow cell and geotech fabric.
- Soil to be ANL Planter Box Mix, or equivalent. Blend of soil, coarse sand, graded ash, nepean sand, composted sawdust, botany humus and composted pine bark.
- Soil to be between 20-50mm below top of retaining wall height, to allow for dropping.

### TURFING

- Turf to be laid on minimum 100mm turf underlay.
- Turf underlay to be ANL Sand / Soil Blend, or equivalent.
- Turf to be Sir Walter Turf – Premium Buffalo Grass (Registered PBR), supplied by President Turf, or equivalent.

### MULCHING

- Place mulch to minimum depth of 75mm, clear of plant stems, and rake to an even surface flush with the surrounding finished levels and consistent in depth.
- Trees in lawn areas to have 750mm diameter of mulch surrounding.
- Mulch for general garden areas, pots, and planters to be Australian Native Landscapes (ANL) Greenlife Mulch and Compost', or equivalent.

### TREE PLANTING

- Excavate holes in accordance with dimension of container. The depth of the holes is to be equivalent to the container height plus 100mm and the width of the hole is to be twice that of the container.
- Locate tree to centre of hole and backfill with soil. Firm about root ball.
- All plant material, 45 Litres or over, to be staked.

### IRRIGATION

- Automated irrigation system to be implemented. Reputable irrigation brands are to be sourced.
- Use drip lines with emitters at 300mm spacing's for all garden beds.
- Use pop-up spray heads for all lawn areas. Pop-up spray heads are to be spaced according to product specification.
- Conceal irrigation below the mulch layer in planting areas and 150mm below the surface of turf areas. Conceal all components including pipework, fittings, valves, and control equipment.

DA PLANT SCHEDULE							
ID	QTY	BOTANICAL NAME	COMMON NAME	SCHEDULED SIZE	MATURE SPREAD	MATURE HEIGHT	REMARKS
Trees							
Bin	7	Banksia integrifolia	Coastal Banksia	75 Ltr	3.5 - 6m	5 - 10m	Australian Native
Pa	3	Plumeria acutifolia	Frangipani	Advanced	3.0 - 5.0 m	3.0 - 5.0 m	
Palms - Cycads							
Bno	1	Bismarckia nobilis	Bismarck Palm	Advanced	5.0 - 7.0 m	6.0 - 10.0 m	
Zaf	5	Zamia furfuracea	Cardboard Plant	400 mm	1.5 - 2.0 m	0.0 - 1.0 m	
Shrubs							
Asm	8	Acmena smithii 'Minor'	Lilly Pilly	75 Ltr	3.5 - 6.0 m	3.0 - 5.0 m	Australian Native
Gaf	56	Gardenia augusta 'Florida'	Gardenia	200 mm	0.6 - 0.8 m	0.6 - 0.8 m	
Rhs	34	Rhagodia spinescens	Salt Bush	200 mm	1.0 - 3.0 m	1.0 - 3.0 m	Australian Native
Vsu	84	Viburnum suspensum	Sandankwa Viburnum	200 mm	1.5 - 3.0 m	1.5 - 2.0 m	
Wff	22	Westringia fruticosa	Coastal Rosemary	200 mm	2.0 - 4.0 m	1.5 - 2.0 m	Australian Native
Perennials							
Abr	11	Alocasia brisbanensis	Cunjevoi	200 mm	0.5 - 0.8 m	1.0 - 1.8 m	Australian Native
Alc	51	Alpinia caerulea 'Green Form'	Native Ginger	200 mm	1.0 - 1.5 m	1.0 - 1.5 m	Australian Native
Grasses							
Fn	71	Ficinia nodosa	Club Rush	140 mm	0.6 - 0.8m	0.6 - 0.8m	Australian Native
Ult	154	Lomandra longifolia 'Tanika'	Spiny-headed mat rush	140 mm	0.6 - 0.7 m	0.5 - 0.6 m	Australian Native
Groundcovers							
Cg	45	Casuarina glauca 'Cousin It'	Cousin It	200 mm	0.0 - 1.0 m	0.1 - 0.3 m	Australian Native
Di	192	Dichondra repens	Kidney Weed	140 mm	0.9 - 1.2 m	0.0 - 0.3 m	Australian Native
Oja	145	Ophiopogon japonicus	Mondo Grass	100 mm	0.1 - 0.2m	0.1 - 0.2m	
Vi	146	Viola hederacea	Native Violet	140 mm	1.2 - 2.0 m	0.0 - 0.3 m	Australian Native
Climbers							
Hsc	211	Hibbertia scandens	Golden Guinea Flower	140 mm	3.5 - 6.0 m	0.0 - 0.3 m	Australian Native
Pj	12	Pandorea jasminoides	Bower of Beauty	140 mm	2.0 - 3.5 m	3.0 - 5.0 m	Australian Native
Ferns							
Bsl	68	Blechnum 'Silver Lady'	Silver Lady Fern	200 mm	0.9 - 1.2 m	0.7 - 0.9 m	Australian Native
Total:	1326						

## NATIVE SPECIES

PROPOSED AUSTRALIAN NATIVE SPECIES = 14  
70% OF PROPOSED SPECIES ARE NATIVE

TOTAL OF AUSTRALIAN NATIVE PLANTS = 1032 (77.8%)

PROJECT

LAWRENCE RESIDENCE  
1 PHYLLIS ST, NORTH CURL CURL  
NSW

DRAWING TITLE.

DEVELOPMENT APPLICATION  
COVER PAGE

DRAWN BY

MF

REVISION

02

DATE

31.01.2025

SCALE

1:100 @ A2

JOB NUMBER

24.089

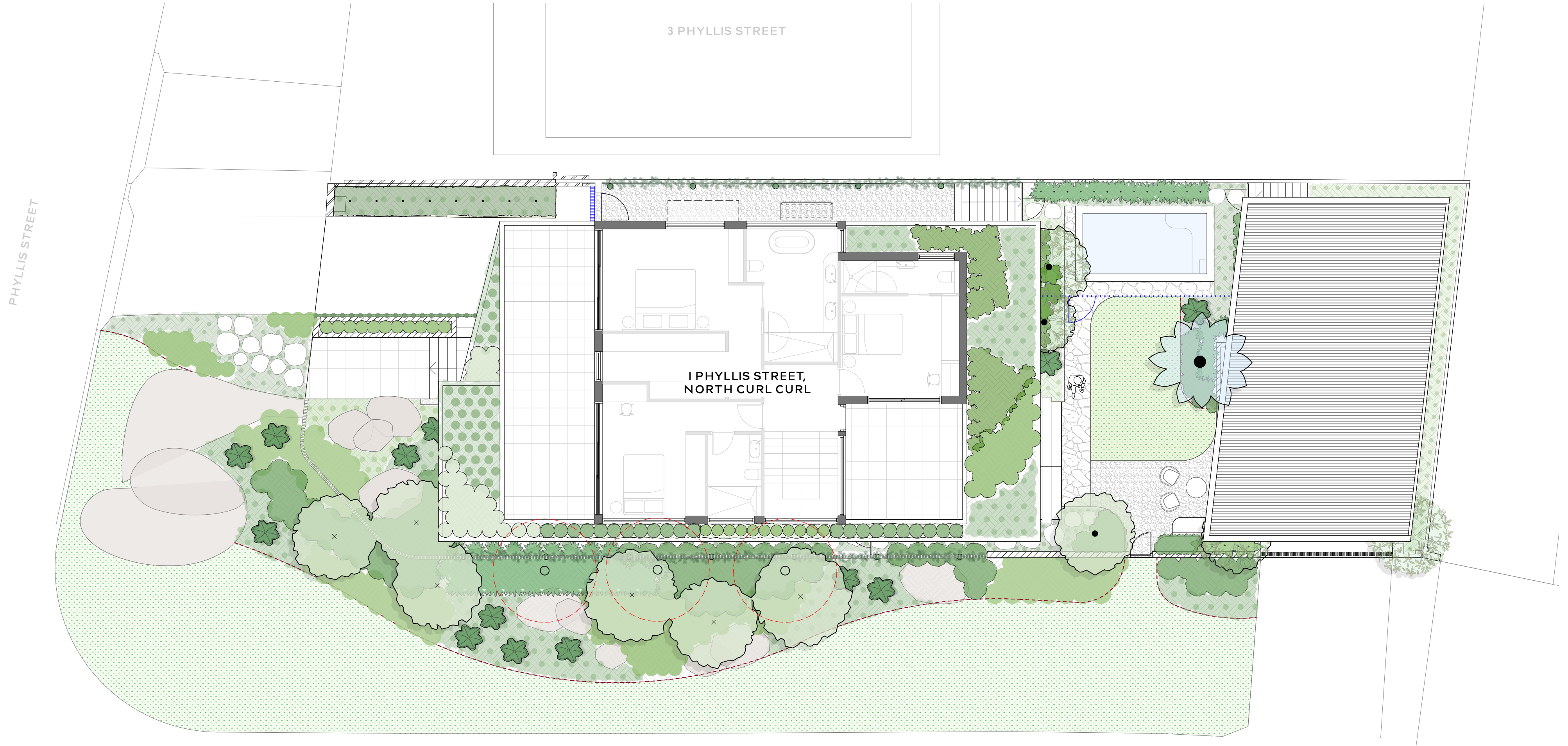
DRAWING NUMBER

DA\_00

THIS DRAWING IS PROTECTED BY COPYRIGHT. INFORMATION PROVIDED WITHIN THESE DRAWINGS MUST BE CONFIRMED BY CONTRACTOR TO MEET SITE CONDITIONS AND BUILDING STANDARDS. ALL DIMENSIONS MUST BE VERIFIED ON SITE.

WYER & CO





LEGEND

- BOUNDARY
- EXISTING LEVELS
- PROPOSED LEVELS
- GARDEN BEDS
- LAWN

PROJECT  
LAWRENCE RESIDENCE  
1 PHYLLIS ST, NORTH CURL CURL  
NSW

DRAWING TITLE  
DEVELOPMENT APPLICATION  
MASTERPLAN

DRAWN BY  
MF  
REVISION  
02

DATE  
31.01.2025  
SCALE  
1:100 @ A2

JOB NUMBER  
24.089  
DRAWING NUMBER  
DA\_01  
THIS DRAWING IS PROTECTED BY COPYRIGHT. INFORMATION  
PROVIDED WITHIN THESE DRAWINGS MUST BE CONFIRMED BY  
CONTRACTOR TO MEET SITE CONDITIONS AND BUILDING  
STANDARDS. ALL DIMENSIONS MUST BE VERIFIED ON SITE.

WYER & CO







