

SHADOW DIAGRAM
9AM - JUNE 21st
NTS



SHADOW DIAGRAM
12PM - JUNE 21st
NTS



SHADOW DIAGRAM
3PM - JUNE 21st
NTS

LEGEND

EXISTING SHADOW

ADDITIONAL SHADOW CAST BY PROPOSED DEVELOPMENT

SITE BOUNDARY

- GENERAL NOTES:
- ALL WORKS TO COMPLY WITH BUILDING CODE OF AUSTRALIA, REQUIREMENTS OF RELEVANT STATUTORY AUTHORITIES/ LOCAL GOVERNMENT & RELEVANT AUSTRALIAN BUILDING STANDARDS
 - CONTRACTOR TO VERIFY ALL DIMENSIONS ON SITE BEFORE COMMENCING WORK. SHOULD A DISCREPANCY BE IDENTIFIED PLEASE CONSULT WITH ARCHITECT PRIOR TO PROCEEDING (DO NOT SCALE FROM DRAWINGS)
 - DRAWINGS FOR THE PURPOSES OF DA ONLY - FURTHER CONSULTANT/ AUTHORITY COORDINATION WILL BE REQUIRED AT CC STAGE WHICH MAY IMPACT ON DESIGN AND PLANNING LAYOUTS
 - COPYRIGHT OF DESIGN SHOWN HEREON IS RETAINED BY PBD ARCHITECTS AND AUTHORITY IS REQUIRED FOR ANY REPRODUCTION

- LEGEND:
- | | |
|-----|-----------------------------------|
| AW | AWNING |
| AH | ACCESS HATCH |
| CU | A/C CONDENSER UNITS |
| FH | FIRE HYDRANT |
| FHR | FIRE HOSE REEL |
| FS | FIRE STAIRS |
| GC | GARBAGE CHUTE |
| GW | GREEN WALL |
| HW | HIGHLIGHT WINDOW |
| MV | MECHANICAL RISER TO FUTURE DETAIL |
| MB | MAILBOX TO FUTURE DETAIL |
| R | 240L RECYCLING BIN |
| SK | SKYLIGHT |
| ST | STORAGE |
| WT | HOT WATER UNITS |

- MATERIALS LEGEND:
- | | |
|-----|--|
| AFG | ALUMINIUM FRAMED GLAZING |
| AFL | ALUMINIUM ELLIPTICAL FIXED LOUVERS |
| AW | AWNING TO FUTURE DETAILS |
| BC | BATTEN CLADDING (TO FUTURE DETAIL) |
| FB | FACE BRICK |
| GB | FRAMELESS TOUGHENED GLASS BALUSTRADE (TO BCA/AUSTRALIAN STANDARDS) |
| MF | METAL FENCING (TO FUTURE SELECTION) |
| PC | COMPOSITE PANEL CLADDING |
| PSx | PRIVACY SCREEN (TO FUTURE SELECTION) |
| PTx | PAINT FINISH TYPEX |
| RD | ROLLER DOOR |
| RP | RIVER PEBBLES |
| RW | RENDERED WALL/SELECTED PAINT FINISH |
| TC | TIMBER CLADDING |

A	2019.06.28	DA LODGEMENT
ISSUE	DATE	DESCRIPTION



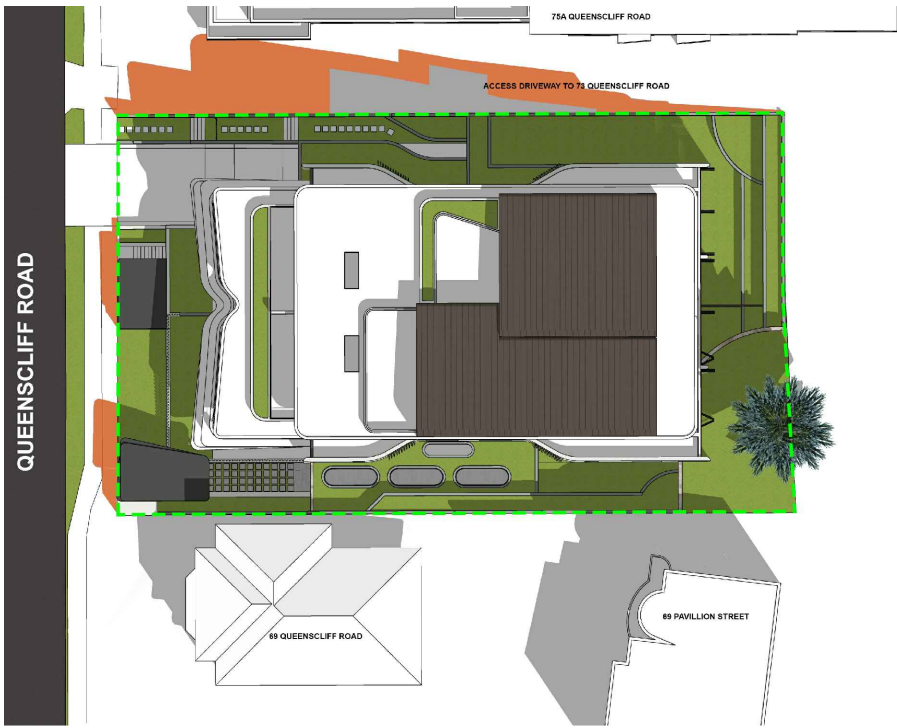
CLIENT:
**QUEENSCLIFF DEVELOPMENTS
Pty Ltd**

ARCHITECT:
PBD | ARCHITECTS
ABN 36 147 035 550
P - 02 9698 8140 E - info@pbdarchitects.com.au W - www.pbdarchitects.com.au
Level 2, 52 Albion Street, Sunny Hills NSW 2010

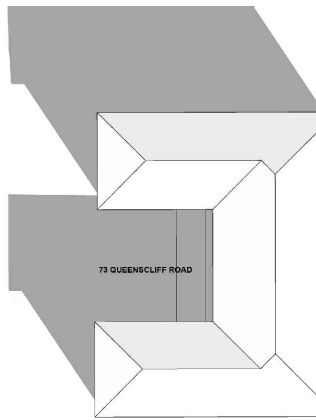
PROJECT:
**PROPOSED RESIDENTIAL FLAT BUILDING
71-71A QUEENSCLIFF ROAD, QUEENSCLIFF**

May 2019
DRAWING TITLE:
**SHADOW DIAGRAMS
JUNE 21st**

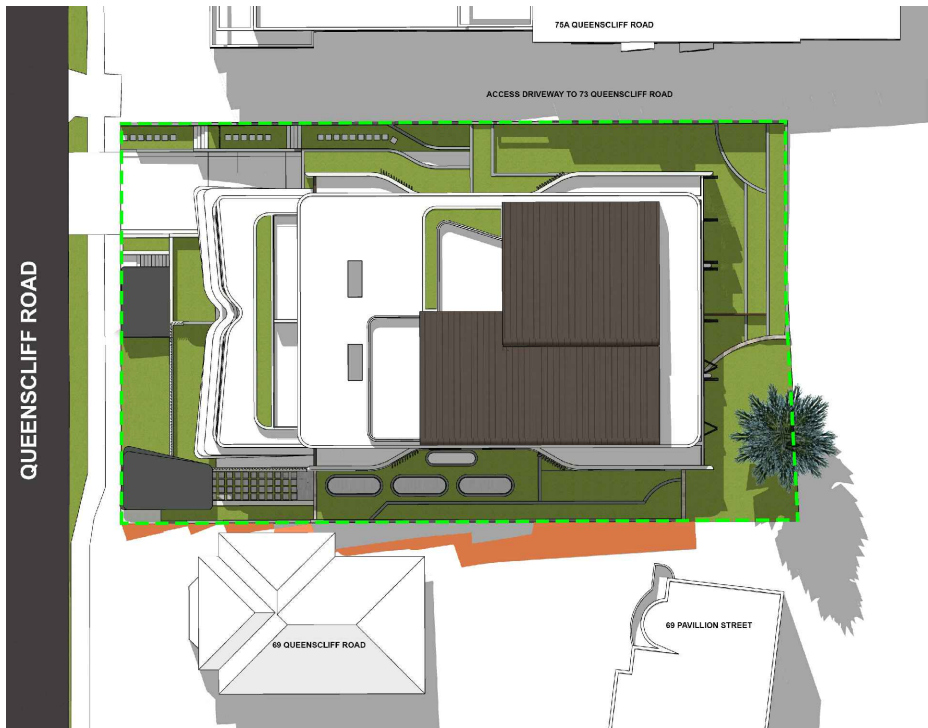
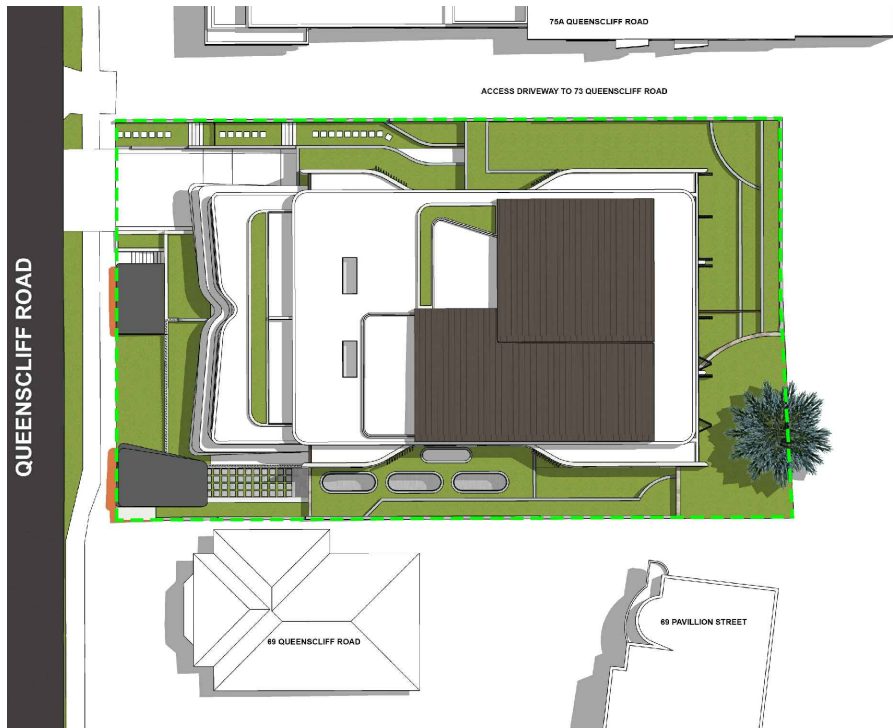
SCALE: 1:100@A1 / 1:200@A3	DRAWING NO: DA602	ISSUE: A
PROJECT NO: 1911		



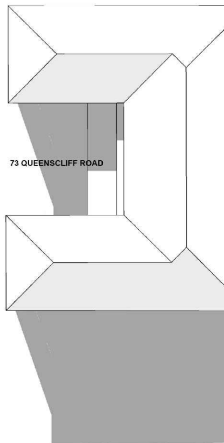
1
SHADOW DIAGRAM
9AM - JANUARY 21st
NTS



2
SHADOW DIAGRAM
12PM - JANUARY 21st
NTS



3
SHADOW DIAGRAM
3PM - JANUARY 21st
NTS



LEGEND

- EXISTING SHADOW
- ADDITIONAL SHADOW CAST BY PROPOSED DEVELOPMENT
- SITE BOUNDARY

- GENERAL NOTES:
- ALL WORKS TO COMPLY WITH BUILDING CODE OF AUSTRALIA, REQUIREMENTS OF RELEVANT STATUTORY AUTHORITIES/ LOCAL GOVERNMENT & RELEVANT AUSTRALIAN BUILDING STANDARDS
 - CONTRACTOR TO VERIFY ALL DIMENSIONS ON SITE BEFORE COMMENCING WORK. SHOULD A DISCREPANCY BE IDENTIFIED PLEASE CONSULT WITH ARCHITECT PRIOR TO PROCEEDING (DO NOT SCALE FROM DRAWINGS)
 - DRAWINGS FOR THE PURPOSES OF DA ONLY - FURTHER CONSULTANT/ AUTHORITY COORDINATION WILL BE REQUIRED AT CC STAGE WHICH MAY IMPACT ON DESIGN AND PLANNING LAYOUTS
 - COPYRIGHT OF DESIGN SHOWN HEREON IS RETAINED BY PBD ARCHITECTS AND AUTHORITY IS REQUIRED FOR ANY REPRODUCTION

- LEGEND:
- AW AWNING
 - AH ACCESS HATCH
 - CU A/C CONDENSER UNITS
 - FH FIRE HYDRANT
 - FHR FIRE HOSE REEL
 - FS FIRE STAIRS
 - GC GARBAGE CHUTE
 - GW GREEN WALL
 - HW HIGHLIGHT WINDOW
 - MV MECHANICAL RISER TO FUTURE DETAIL
 - MB MAILBOX TO FUTURE DETAIL
 - R 240L RECYCLING BIN
 - SK SKYLIGHT
 - ST STORAGE
 - WT HOT WATER UNITS

- MATERIALS LEGEND:
- AFG ALUMINIUM FRAMED GLAZING
 - AFL ALUMINIUM ELLIPTICAL FIXED LOUVERS
 - AW AWNING TO FUTURE DETAILS
 - BC BATTEN CLADDING (TO FUTURE DETAIL)
 - FB FACE BRICK
 - GB FRAMELESS TOUGHENED GLASS BALUSTRADE (TO BCA/AUSTRALIAN STANDARDS)
 - MF METAL FENCING (TO FUTURE SELECTION)
 - PC COMPOSITE PANEL CLADDING
 - PSX PRIVACY SCREEN (TO FUTURE SELECTION)
 - PTX PAINT FINISH TYPEX
 - RD ROLLER DOOR
 - RP RIVER PEBBLES
 - RW RENDERED WALL/SELECTED PAINT FINISH
 - TC TIMBER CLADDING

A	2019.06.28	DA LODGEMENT
ISSUE	DATE	DESCRIPTION



CLIENT:
QUEENSCLIFF DEVELOPMENTS
Pty Ltd

ARCHITECT:
PBD | ARCHITECTS
ABN 36 147 035 550
P - 02 9698 8140 E - info@pbdarchitects.com.au W - www.pbdarchitects.com.au
Level 2, 52 Albion Street, Surry Hills NSW 2010

PROJECT:
PROPOSED RESIDENTIAL FLAT BUILDING
71-71A QUEENSCLIFF ROAD, QUEENSCLIFF

May 2019
DRAWING TITLE:
SHADOW DIAGRAMS
JANUARY 21st

SCALE: 1:100@A1 / 1:200@A3	DRAWING NO: DA603	ISSUE: A
PROJECT NO: 1911		