



Installation Guide

BUILDERS INSTALL PACK



01

Choose Plungie



Plungie **Arena**

Diameter	External 3,500mm	Internal 3,320mm
Height	External 1,690mm	Internal 1,590mm
Volume	9,150 Litres	
Dry Weight	7,000 kg	
Bench Space	3.2m ²	

[+ Plungie Arena Specifications](#)



Plungie **Studio**

Length	External 3,600mm	Internal 3,420mm
Width	External 2,200mm	Internal 2,020mm
Height	External 1,690mm	Internal 1,590mm
Volume	8,000 Litres	
Dry Weight	6,800 kg	

[+ Plungie Studio Specifications](#)



Plungie **Original**

Length	External 4,600mm	Internal 4,420mm
Width	External 2,500mm	Internal 2,320mm
Height	External 1,690mm	Internal 1,590mm
Volume	14,000L	
Dry Weight	8,600 kg	

[+ Plungie Original Specifications](#)



Plungie **Max**

Length	External 6,000mm	Internal 5,820mm
Width	External 3,000mm	Internal 2,820mm
Height	External 1,690mm	Internal 1,590mm
Volume	20,100L	
Dry Weight	11,800Kg	

[+ Plungie Max Specifications](#)



02

Standard Building Approval

Plungie will supply you with:

- Pre-engineered specifications package that covers the pool shell and prescribed standard footings, covering A, S, M, H1 and H2 site classifications.
- + [Download Plungie Engineering Drawing Set](#)
- + [Download Plungie Construction Cover Engineering](#)
- Your state or territories required an engineering compliance certificate, which can be downloaded from the following links:
 - + [QLD - Form I5](#)
 - + [VIC - REG 126](#)
 - + [SA - REG 88](#)
 - + [NSW - General Design & Engineering Certificate](#)

You will be required to:

- Submit the proposed pool plan along with your general building approvals. This generally includes:
 - > **Compliance certificate** - covering pool construction and prescribed footing per site classification (supplied by Plungie)
 - > **All pre-engineered specifications** referenced in your compliance certificate, covering pool and footings (supplied by Plungie)
 - > **Site plan** showing location of pool with reference to boundaries and structures
 - > **Proposed fence/gate plan** - this will need to comply with state pool carrier regulations
 - > **Builders Home warranty insurance policy** noting pool installation works within the proposed building plan



03

Basic Site Preparation

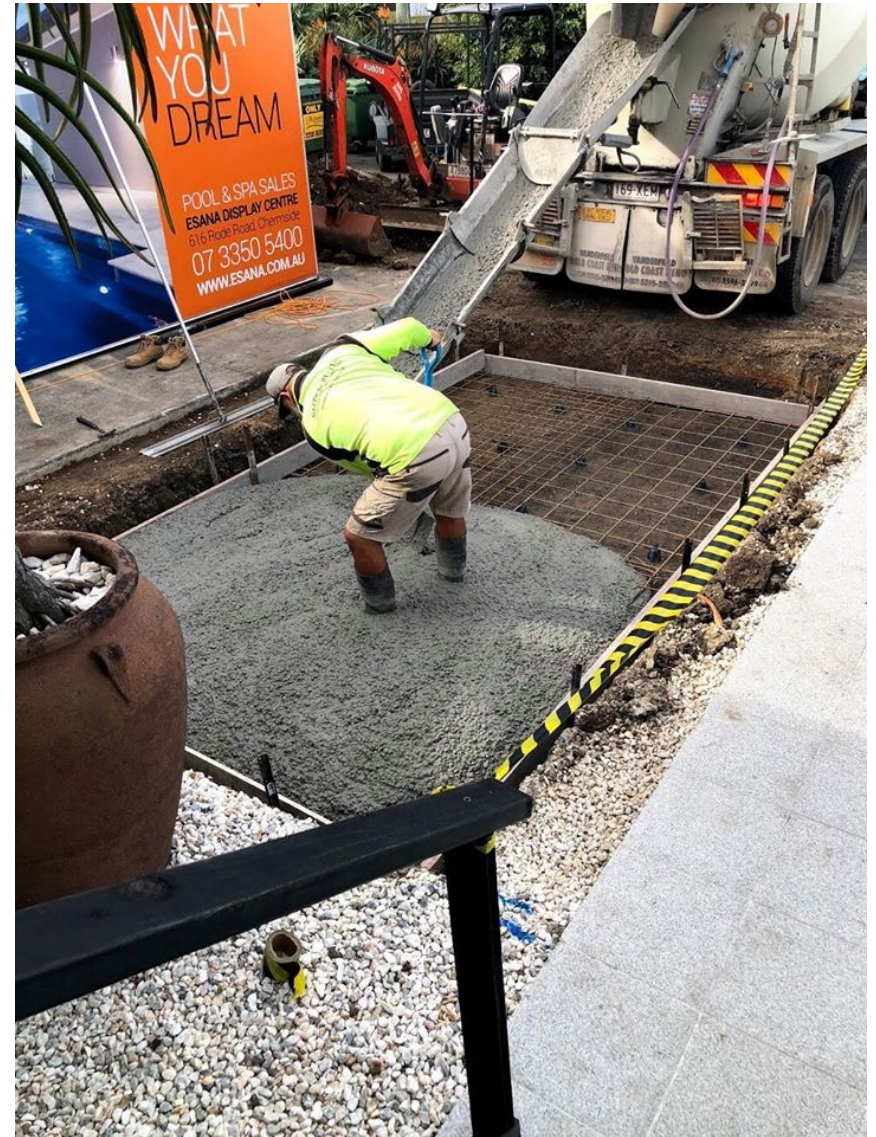
Plungie will supply you with:

- Standardised base preparation requirements for each model of pool, covering the slab specification and excavation plan
- Footings preparation has been pre-engineered for all models, covering site classifications of A, S, M, H1 and H2 (refer to engineering specification).

+ [Download Plungie Engineering Drawing Set](#)

You will be required to:

- Complete site preparation in accordance with standardised engineering requirement per site classification
- Upon completion, your concrete contractor should supply certification (if required) to confirm slab footing has been prepared in accordance with the supplied pre-engineered specifications (supplied by Plungie).
- Ensure a provision is made in the slab for the hydrostatic valve, refer to Engineering Drawings.



03

Basic Site Preparation

Slab requirements:

	ARENA		STUDIO		ORIGINAL		MAX	
SITE CLASS	A - S - M	HI - H2	A - S - M	HI - H2	A - S - M	HI - H2	A - S - M	HI - H2
SLAB WIDTH	100mm	180mm	100mm	180mm	100mm	180mm	100mm	180mm
MESH REQUIRED	Single Layer SL72	Double Layer SL72	Single Layer SL72	Double Layer SL72	Single Layer SL72	Double Layer SL72	Single Layer SL72	Double Layer SL72
BASE SLAB DIMENSIONS	4000mm x 4000mm	4000mm x 4000mm	4000mm x 2600mm	4000mm x 2600mm	5000mm x 3000mm	5000mm x 3000mm	6500mm x 3500mm	6500mm x 3500mm
CONCRETE (m ³)	2.0m ³	3.4m ³	1.4m ³	2.4m ³	2.0m ³	3.2m ³	2.6m ³	5.0m ³
MESH (m ²)	15.2m ²	30.4m ²	9.75m ²	19.5m ²	14.2m ²	28.4m ²	21.75m ²	43.50m ²

- Ensure a provision is made in the slab for the hydrostatic valve, refer to Engineering Drawings.

04

Crane Hire

Plungie will supply you with:

- Standardised lifting diagrams containing key information required for all crane hire engagement.
- Plungie is delivered with the required m20 or m24 lifting swivels (depending on model selected).
- Ongoing support to ensure accurate and easy engagement of crane hire. Crane hire companies also offer free site visits and project assessment services, which we recommend using for accurate/best practice crane engagement.

- + [Download Plungie Arena Lifting Guide](#)
- + [Download Plungie Studio Lifting Guide](#)
- + [Download Plungie Original Lifting Guide](#)
- + [Download Plungie Max Lifting Guide](#)

You will be required to:

- Arrange for crane hire to be on-site at point of delivery to lift pool from the delivery truck to its pre-prepared footing on your site. Flatbed body trucks are utilised for deliveries within SEQ or semi-trailer for interstate deliveries. If Semi access is not available for your site, Plungie recommends engaging your chosen crane hire company to orchestrate delivery of the Plungie to their crane yard for onwards delivery on a body truck.
- Access plays the biggest part in the financial viability and operational ease of a Plungie inclusion, it is for this reason that we strongly recommend that the Plungie is installed on site at the vacant lot / peg out or slab stage (unless access will be maintained throughout the general build).



05

Standard Plumb Up

Plungie will supply you with:

- Your Plungie will arrive pre-fitted with all primary plumbing fixtures (Skimmer Box, Hydrostatic valve and filtration returns) and primary plumbing pre-plumbed.
- A plumbing installation guide can be provided which outlines the provisions in our Plungie and how your equipment needs to be set up. Packages range from your Base equipment through to Eco and Smart options depending on your specific requirements.

+ [Download Plungie Plumbing Guide](#)

+ [Download Plungie Hydrostatic Valve Installation Guide](#)

You will be required to:

- Ensure that the required power provisions are made available for the equipment package to run.
 - Standard package requires a 10amp double GPO.
- A 600mm x 900mm concrete pad with 1 metre clearance is recommended to house your equipment - if your pool is out of the ground the stair void is the perfect location.



06

Electrical + Back Fill

Electrical

Every Plungie requires earthing, which must be completed by a trade-qualified electrician to comply with mandatory Australian standard. An electrician will utilise one of the many external M20 or M24 ferrules, cast into the Plungie shell to tap an earthing wire with via an M20 or M24 bolt. This will then effectively bond the earthing wire to the entire pool as this ferrules are cast to the reinforcing of the Plungie shell.

Back Fill

If the Plungie is being installed in-ground or partially in-ground, you will need to backfill the over-excavated area of the Plungie footing with any granular material that will allow for drainage away from the Plungie footing

Builders most commonly use low cost options such as recycled drainage gravel or recycled concrete aggregate.

Best practice is to arrange delivery of backfill material in Bulka Bags, from your nearest landscape/building material supplier, at time of crane hire to allow for fast and easy backfill of your Plungie. This can often be completed within minimum hire periods of your crane.



EARTHING BOLT



07

Finishing

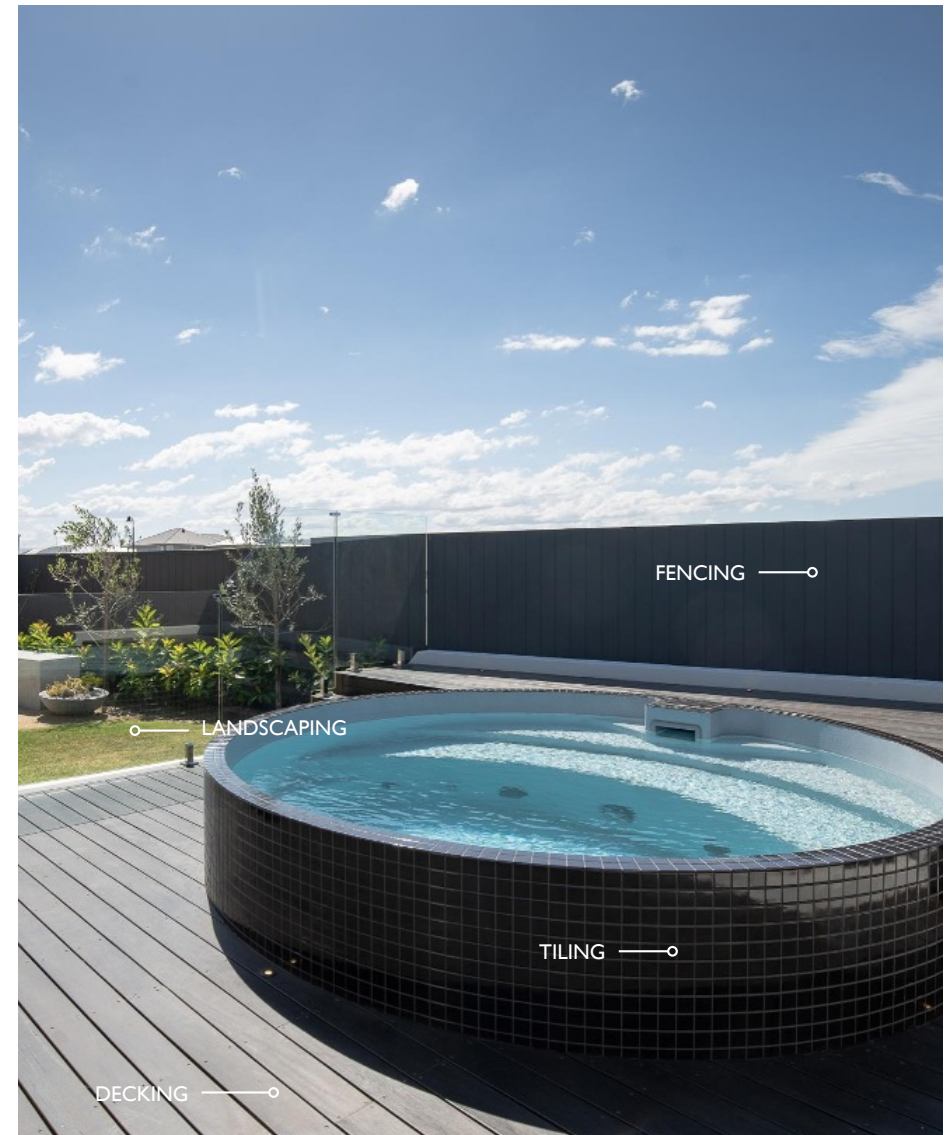
No longer do you need to settle for limited factory options. The Plungie is the perfect blank canvas pool solution to allow for easy on-site finishing to allow the pool to be perfectly tied to the home.

Manufactured with precision, a Plungie allows for highly effective costings and sourcing of materials to enable efficient trade engagement to complete the outdoor element of a home. This makes Plungie a great anchor product in the landscape design.

Each element, material and finish of the Plungie has been meticulously chosen, engineered and designed to allow for the fastest, easiest and most cost effective on-site works possible in the pool industry.

[+ Download Plungie Tiling Guide](#)

[+ Download Plungie Fencing Guide](#)



08

Fill + Start Up

You will be required to:

- Ensure that your Plungie inclusion has had final certification and inspection
- Ensure your Hydrostatic Valve (found in your skimmer box) is screwed into position just prior to your Plungie being filled
- Arrange for pool to be filled”
 - A simple garden hose will fill a Plungie in anywhere from 6-12 hours depending on model and site water pressure
 - Many of our builders and trade partners engage a local water delivery service which can fill a Plungie in as little as 15 minutes. A water truck delivery starts from around \$250 for 10,000L.

+ [Download Plungie ecoFinish Care Guide](#)



Installation Checklist

01 Choose Plungie

- ☐ Request Quote
*Plungie Model?
Equipment?
Heating?
Spa Jets?
Fencing Ferrules?
Construction Cover?
Waterline Tile Provision?
Delivery?*
- ☐ Confirm Sales Order
- ☐ 30% Deposit Invoice
- ☐ Balance Invoice 30 days prior to delivery.

02 Standard Building Approval

- ☐ Download Compliance Certifications which vary state to state:
+ QLD Form 15
+ VIC REG 126
+ NSW D&E Certification
+ SA REG 88
- ☐ Submit Compliance Certifications to your local council or private certifier for approval.

03 Basic Site Preparation

- ☐ Conduct soil analysis.
- ☐ Refer to Engineering Set detailing the slab requirements for sites classified as A, S, M, H1, H1-D, M-D, H2.

For all other site classifications you will need site specific engineering.
- ☐ Ensure provision is made in the slab for the hydrostatic valve.
- ☐ Ensure slab is 200mm larger in each direction than the selected pool shell.
- ☐ Mark out placement of the skimmer box, plumbing and equipment slab.

04 Crane Hire

- ☐ Organise your crane hire for date of delivery.
- ☐ Ensure Lifting Diagrams have been shared with the crane company prior to delivery:
+ Arena Lifting Diagram
+ Studio Lifting Diagram
+ Original Lifting Diagram
+ Max Lifting Diagram
- ☐ Contact Plungie to confirm delivery date and request time for delivery.
- ☐ Inform crane hire company of delivery time ensuring crane is on site at point of delivery.

---- DAY OF DELIVERY ----

- ☐ Ensure site access is clear.
- ☐ Check slab condition is flat and clean from any debris or small rocks.

Once the transport restraints have been removed, your Plungie is now in the care and responsibility of your trusted and skilled crane providers.
- ☐ Untie Plungie from the truck and install lifting lugs on lifting points.
- ☐ Crane into place

05 Standard Plumb Up

- ☐ Ensure required power provisions are made available for the equipment package to run.
- ☐ Engage your plumber for the secondary plumbing and to connect your equipment.

Refer to our Plumbing Guide, which outlines the provisions in your Plungie and how your equipment needs to be setup.
+ Plumbing Guide

06 Electrical + Back Fill

- ☐ Engage your electrician to earth your Plungie.

Your Plungie will be delivered with the earthing bolt, transported in the skimmer box.
- ☐ Engage your electrician to earth your Plungie.
- ☐ Back fill

07 Finishing

- ☐ Waterline Tiles
+ Tiling Guide
- ☐ Coping Tile
- ☐ Decking / Paving Surrounds
- ☐ Fencing
+ Fencing Guide
- ☐ Landscaping

The construction cover should remain fitted during finishing of the surrounds and landscaping.

If removal is required for access, please ensure care is taken to not damage the ecoFinish as this may void your warranty.
- ☐ Pool fencing certification.

08 Fill + Start Up

- Do not fill your Plungie until you have been issued with your final fencing barrier inspection certificate.*
- ☐ Remove Construction Cover
+ Construction Cover Removal Guide
 - ☐ Initial clean prior to start up
 - ☐ Install hydrostatic valve, located in your skimmer box.
+ Hydrostatic Valve Guide
 - ☐ Fill pool
 - ☐ Balance water
 - ☐ Swim

Delivery

Contact us for region specific freight pricing.



Plungie Installation

Take a look at some recent install examples:

Sandbox + Hutchinson Builders

Lucky number 7 for Sandbox Properties and Hutchinson Builders



Maple by Linnaeus

Plungie provides the perfect solution for luxury holiday homes



PEMA Properties

How Plungie fits perfectly into PEMA's new Ogilvie Development



Cavalier Homes

If it feels like everyone is getting a Plungie...it's because they are.



The Block 2020: Jimmy and Tam

The Block 2020 winners Jimmy and Tam install a Plungie



NB Custom Builds

NB Custom Builds Partner with Plungie and install a Plungie OG in Rosebud



FAQ

Pools

Can I change the size of the pool?

Due to the pre-cast nature of our pools, modifications such as increasing or decreasing size is not possible.

How deep are your pools?

Every Plungie's external shell height is 1.69m, which makes the typical water depth 1.5m.

What is the internal finish of the pool?

The internal finish of the pool is ecoFINISH, which is a highly engineered form of powder coating.

[+ Find out more here](#)

We also offer an alternative raw concrete internal finish, this is a great option if you are looking to tile your entire pool

What is the external finish of the pool?

The external surfaces of our pools are delivered with an AS 3610-1995 Class 2 concrete finish.

[+ Find out more here](#)

What warranty comes with the pool?

A ten-year structural and ecoFinish warranty comes with every Plungie.

Does it come with coping tiles?

Due to the nature of precast concrete, the top edge of your Plungie is not an architectural finish. There will be slight imperfections caused by the moulding process. To maximise the aesthetic appeal and longevity of your Plungie we highly recommend the use of a coping tile. This will not only improve the look but also help protect the concrete from wear and tear. Coping tiles can easily be added to the pool, however, we don't sell them directly.

Can I tile my Plungie?

Yes, the Plungie can be tiled internally or externally. We don't offer tiling options directly however, we can supply your Plungie with no internal ecoFinish at a reduced price. Either you or your builder/installer/tiler can then tile it for you to make your Plungie unique.

Are the pools fibreglass?

Every Plungie is made completely from concrete.

[+ Read more about concrete vs fibreglass here](#)

Does it come with heating?

Every Plungie comes with the pre-plumbed provisions for heating, however, the heater itself is an additional purchase.

[+ See more about our heaters here](#)

What heating options can I use for my plungie?

Every Plungie can use an electric heat pump (we can supply you with this), gas heater or solar heating.

Installation

Do you do installations?

We are the manufacturer and supplier only - the installation is organised by yourself through a local builder, pool builder, or structural landscaper; depending on your location. In some states and territories, you can even do it yourself as an owner-builder.

[+ Find out more about our process here](#)

If it's going above-ground, do I need a fence?

Fencing regulations differ from state to state. In most states, complete fencing is required if the pool is below 1.2m. We recommend contacting your local council for the specific regulations in your area.

How far off my boundary does my pool have to be?

Boundary requirements will need to be discussed with your local Council as this will vary depending on your site and location conditions.

Can it go on a sloping block?

The Plungie is perfect for any site, including sloping blocks.

Can the pool itself be used to retain my block?

Yes, the pool can be used to retain earth. The engineering we provide covers a certain level of retaining, anything beyond this level would require site specific engineering at your own consultation.

My soil is sandy - can the plungie still go on that?

Yes, slab requirements differ based on the soil type, but a Plungie is a perfect solution for sandy soil. We have pre-engineered specifications that will detail the requirements.



www.plungie.com
1300 PLUNGIE (758 644)