

BOUNDARY

SEWER

EXISTING CONTOURS

RETAINING WALL

ALUMINIUM EDGE

CONCRETE

PROPOSED PAVING

TURF

PROPOSED LEVELS

TREE TO BE RETAINED

LEGEND

EXISTING TREE SCHEDULE			
KEY	BOTANICAL NAME	Height (m)	Status
T1	ANGOPHORA COSTATA	18	RETAIN
T2	CUPRESSUS MACROCARPA	12	REMOVE
T3	PITTOSPORUM UNDULATUM	3	REMOVE
T4	GLOCHIDION FERDINANDII	6	REMOVE
T5	GLOCHIDION FERDINANDII	7	REMOVE
T6	SYAGRUS ROMANZOFFIANUM	6	REMOVE
T7	SYAGRUS ROMANZOFFIANUM	7	REMOVE
T8	RHODODENDRON SPP	3	REMOVE
T9	CUPRESSUS MACROCARPA	20	REMOVE
T10	SYAGRUS ROMANZOFFIANUM	8	REMOVE
T11	OLEA AFRICAN	3	REMOVE
T12	ANGOPHORA COSTATA	16	RETAIN
T13	LEPTOSPERMUM PETERSONII	5	REMOVE

PROPOSED PLANT SCHEDULE					
KEY	BOTANICAL NAME	COMMON NAME	QTY	MATURE HGT	POT SIZE
TREES					
CF	CORYMBIA FICIFOLIA 'SUMMER BEAUTY'	SUMMER BEAUTY	1	5m	45Ltr
TL	TRISTANIOPSIS LAURINA 'LUSCIOUS'	LUSCIOUS WATER GUM	1	8m	45Ltr
SHRUBS					
BY	BESCHORNERIA YUCCOIDES	MEXICAN LILY	2	1m	200mm
CA	CALLISTEMON VIMINALIS 'RED ALERT'	RED ALERT BOTTLEBRUSH	3	2.4m	250mm
CV	CALLISTEMON VIMINALIS 'SLIM'	SLIM BOTTLEBRUSH	4	3m	250mm
DE	DORYANTHES EXCELSA	GYMEA LILY	2	2m	200mm
GP	GREVILLEA 'PEACHES AND CREAM'	GREVILLEA	1	2m	200mm
PG	PITTOSPORUM 'GOLF BALL'	GOLF BALL PITTOSPORUM	3	0.7m	200mm
WF	WESTRINGIA FRUTICOSA 'AUSSIE BOX'	AUSSIE BOX WESTRINGIA	23	0.9m	200mm
XA	XANTHORRHOEA AUSTRALIS	GRASS TREE	1	2m	250mm
GRASSES / GROUND COVERS					
BC	BANKSIA SPINULOSA 'BIRTHDAY CANDLES'	BIRTHDAY CANDLES	6	0.2m	200mm
DC	DIANELLA CAERULEA 'LITTLE JESS'	LITTLE JESS	5	0.4m	140mm
LF	LOMANDRA FLUVIATILIS 'SHARA'	SHARA	8	0.4m	140mm
LN	LOMANDRA LONGIFOLIA 'NYALLA'	NYALLA	9	0.8m	140mm
LT	LOMANDRA LONGIFOLIA 'TANIKA'	TANIKA	5	0.6m	140mm
RS	RHAGODIA SPINESCENS 'AUSSIE FLAT BUSH'	AUSSIE FLAT BUSH	4	0.4m	200mm

PLANTING PALETTE



BOUNDARY

SEWER

EXISTING CONTOURS

RETAINING WALL

ALUMINIUM EDGE

CONCRETE

PROPOSED PAVING

TURF

PROPOSED LEVELS

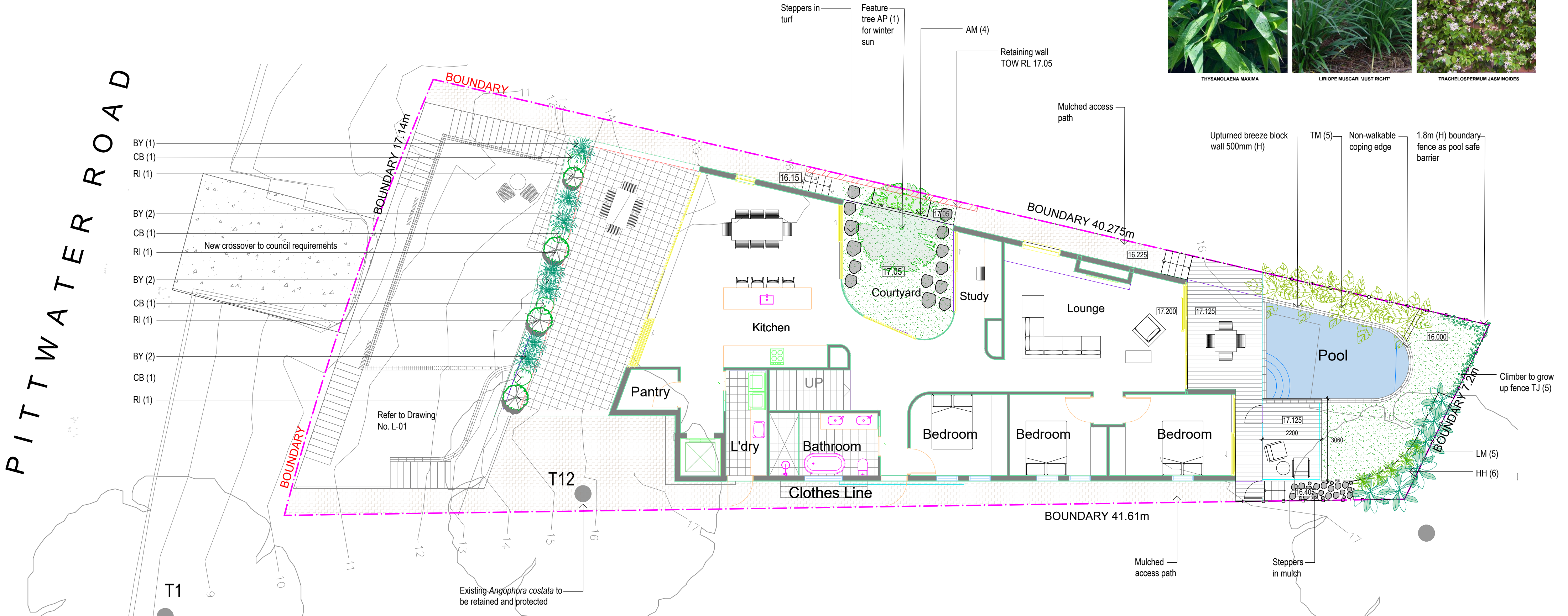
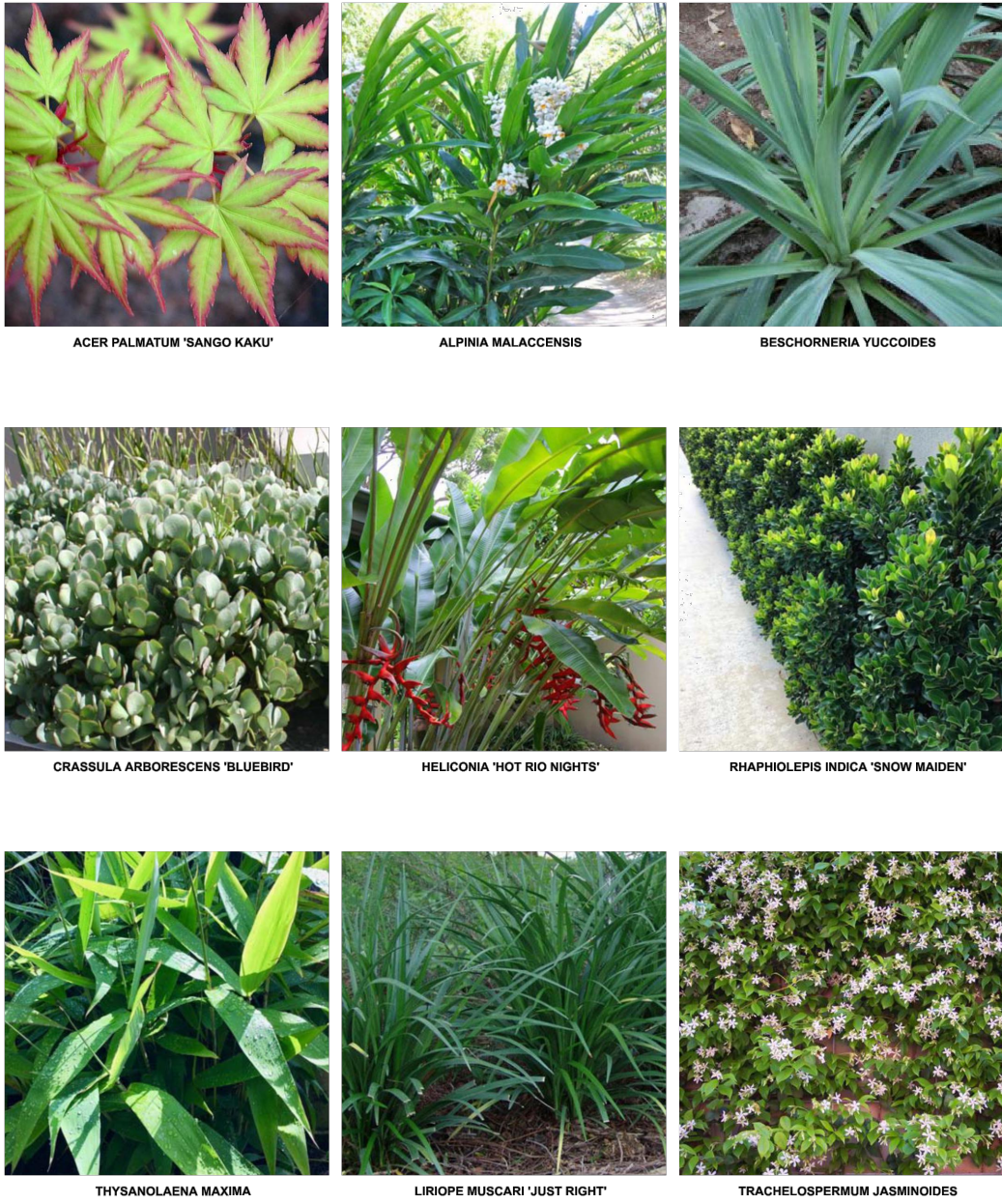
TREE TO BE RETAINED

LEGEND

EXISTING TREE SCHEDULE			
KEY	BOTANICAL NAME	Height (m)	Status
T1	ANGOPHORA COSTATA	18	RETAIN
T2	CUPRESSUS MACROCARPA	12	REMOVE
T3	PITTOSPORUM UNDULATUM	3	REMOVE
T4	GLOCHIDION FERDINANDII	6	REMOVE
T5	GLYCHIDION FERDINANDII	7	REMOVE
T6	SYAGRUS ROMANZOFFIANUM	6	REMOVE
T7	SYAGRUS ROMANZOFFIANUM	7	REMOVE
T8	RHODODENDRON SPP	3	REMOVE
T9	CUPRESSUS MACROCARPA	20	REMOVE
T10	SYAGRUS ROMANZOFFIANUM	8	REMOVE
T11	OLEA AFRICANA	3	REMOVE
T12	ANGOPHORA COSTATA	16	RETAIN
T13	LEPTOSPERMUM PETERSONII	5	REMOVE

PROPOSED PLANT SCHEDULE					
KEY	BOTANICAL NAME	COMMON NAME	QTY	MATURE HGT	POT SIZE
AP	TREES ACER PALMATUM 'SANGO KAKU'	CORAL BARK MAPLE	1	4m	75Ltr
AM	SHRUBS ALPINIA MALACCENSIS	ORNAMENTAL GINGER	4	2.5m	200mm
BY	BESCHORNERIA YUCCOIDES	MEXICAN LILY	7	1m	200mm
CB	CRASSULA 'BLUEBIRD'	BLUEBIRD	4	0.6m	200mm
HH	HELICONIA 'HOT RIO NIGHTS'	HOT RIO NIGHTS	6	3m	250mm
RI	RAPHIOLEPIS INDICA 'SNOW MAIDEN'	SNOW MAIDEN	4	0.8m	250mm
TM	THYSANOLAENA MAXIMA	TIGER GRASS	5	3m	250mm
LM	GRASSES / GROUND COVERS LIRIOPE MUSCARI 'JUST RIGHT'	JUST RIGHT	5	0.5m	140mm
TJ	TRACHELOSPERMUM JASMINOIDES	STAR JASMINE	5	0.3m	200mm

PLANTING PALETTE



LANDSCAPE SPECIFICATION NOTES

SITE PREPARATION

Locate any underground and overground services & ensure no damage occurs. Levels on plan are nominal only & all dimensions to be checked on site prior to commencement. Final structural integrity of all items shall be the sole responsibility of landscape contractor.

WORKMANSHIP AND MATERIAL QUALITY

Materials and workmanship are to conform to the current applicable Australian Standard Specifications and Codes.

PROTECTION OF EXISTING TREES:

Protect all trees affected by demolition & construction. Take necessary precautions to protect the Structural Root Zone(SRZ) as per AS 4970-2009 Australian Standard for Protection of Trees on Development Sites.Tree protection measures shall remain intact until the completion of all construction works. Prohibited Works or material storage within the TPZ as per AS 4970-2009 except with approval of council:

- entry of machinery or storage of building materials, parking of any kind of vehicle
- erection or placement of site facilities, removal or stockpiling of soil or site debris, disposal of liquid waste including paint & concrete wash
- excavation or trenching of any kind (including irrigation or electrical connections).
- attaching any signs or any other objects to the tree, placement of waste disposal or skip bins
- pruning and removal of branches, other than those by a qualified Arborist

REMOVAL OF EXISTING TREES

All trees to be removed shall be carried out by a qualified arborist and work shall conform to the provisions of AS4373-2007 Australian Standards for The Pruning of AmenityTrees.

ELIMINATE WEEDS

Remove all existing weeds by hand, wiping or spraying with a glyphosate based herbicide. Weed control shall never be performed by mechanical cultivation or by scraping. Herbicide spraying is to be used to eliminate all existing weeds 30 days prior to planting.

EXCAVATION & SUB SOIL PREPARATION

Excavate garden beds to the depth required and rip or scarify base & sides of pit to a minimum depth of 150mm.

SUB SOIL DRAINAGE

Install drainage layer where there is surface water runoff draining into garden bed areas & where the existing sub-soil has more than 50% clay composition & there is a risk of subsurface water ponding.

Install perforated corrugated ag. line 75-100mm Dia. with geotextile filter sock & backfill to a minimum 200mm using free draining material, reclaimed/recycled where available. Direct flows at a minimum 0.5% fall to SW system. In areas isolated from stormwater system excavate & backfill an appropriate water dispersion pit.

REUSE EXISTING TOPSOIL

Existing site topsoil should be salvaged & appropriately stockpiled where possible.

IMPORTED TOPSOIL

All construction must comply with AS 4419-2003 Soils for Landscaping and Garden Use. Turf Areas: 'Turf Underlay', Tree Pit and Shrub Planting: 'Premium Garden Mix' as supplied by, ANL p: 02 9450 1444 or approved alternative.

Rooftop Garden: 'Hydrocell 40% Podium Mix', as supplied by, BC Sands p: 02 8543 3401 or approved alternative.

TREE STOCK

Tree stock to be supplied by production nurseries in accordance with AS 2303:2018 Tree Stock for Landscape Use.

Health & Vigour: Supply plants with foliage size, texture & colour consistent with that shown in healthy specimens of the species. Balance of Crown: Supply plants with max. variation in crown bulk on opposite sides of stem axis, +/- 20%. Stock selection should also be based on NATSPEC Guide *Specifying Trees: a Guide to Assessment of Tree Quality*.

STAKING

Install 2 x 2400mm x 50mm x 50mm hardwood timber stakes with hessian ties to all trees. Provide appropriate support considering exposure to prevailing winds.

Stakes and hessian ties to be removed as soon as the tree is self supporting.

ALUMINIUM GARDEN EDGING

Supply and install Link Edge 75mm as per Landscape Plan. Compact and level the base in the required area as indicated on Landscape Plan. Half hammer spikes into prepunched holes (approx 4 spikes every 3m length) starting from the first hole in the end of the Link Edge. Use spike washers supplied by manufacturer.Half hammer subsequent spikes in pivotal areas along the length. (Especially at points where a curve is required). Connect lengths together by using fish-plate connectors supplied by manufacturer. Check position of Link Edge is correct before hammering spikes firmly into ground.

STEPPING STONES

Install each stepping stone on a 75mm thick mortar bed and space according to plan. Stones to finish 10mm above adjacent surface. Fill gaps as specified.

IRRIGATION SYSTEM

New inground dripline irrigation system to be installed to rooftop garden with backflow preventer and with timers. Irrigation system to be designed and installed to local codes.

The entire irrigation system shall be fully automated and provide drip irrigation to all tree, shrub and ground cover zones. It is the Contractor's responsibility to verify water pressure available and determine all design-built parameters prior to any installation and sizing of irrigation components. Irrigation system to be connected to water tank to supplement water from mains.

TIMBER DECK and STAIRS Supply and install timber deck and stairs to BCA requirements and to Australian Standards. All framing timber posts to be treated pine.

All decking and steps to be hardwood. Decking to be fixed using stainless steel countersink nails or screws. Decking boards up to 86mm space with 3mm gaps, boards over 86mm space with 5mm gaps. Stagger joints and ensure all joints in decking boards sit over a joist. Pre drill nail holes into decking boards to avoid splitting. Nail to be 12mm from edges and ends of boards. Nails driven flush with surface (not punched). Each decking board should be nailed to each joist with two nails as per AS1684 or in accordance with manufacturers instructions.

MULCHING

All construction must comply with AS 4454-2003 Compost, soil conditioners and mulches. All planting area impacted by building works to receive 50-75mm of garden Mulch, Droughtmaster, ANL p: 02 9450 1444 or approved alternative. Keep mulch 100mm away from plant stem & form a well to stop excessive water runoff. Finish flush with adjacent surfaces.

Rooftop garden: 20mm of scoria

TURFING

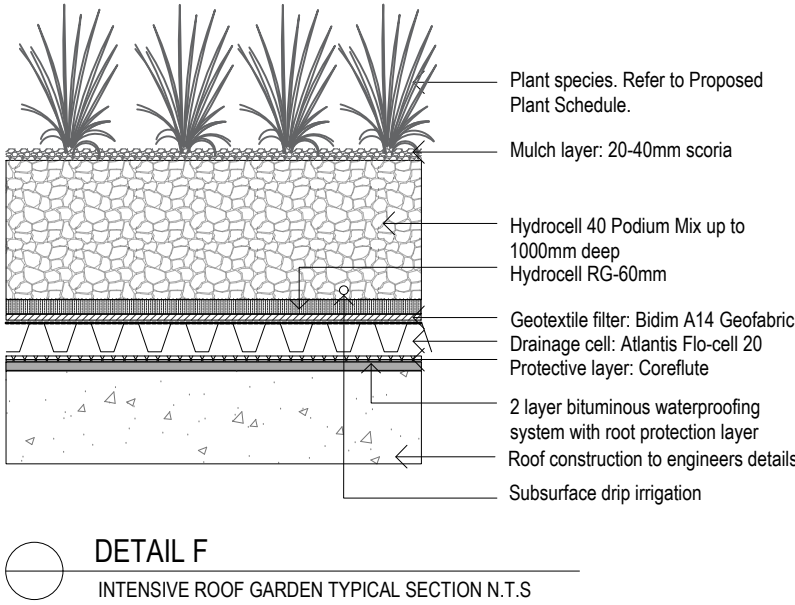
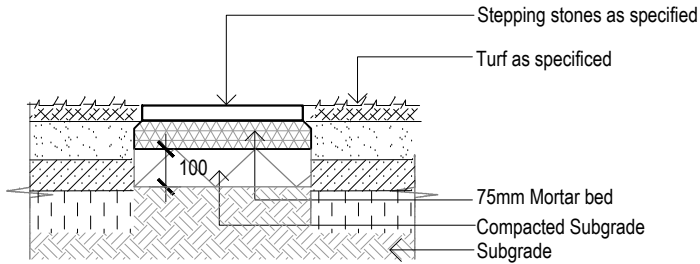
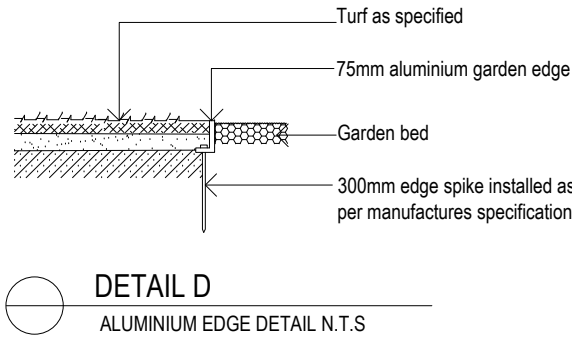
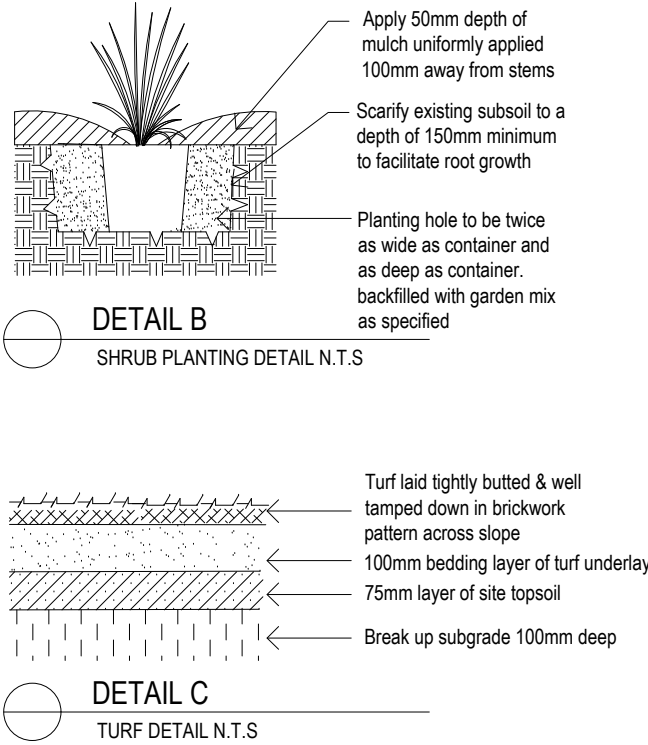
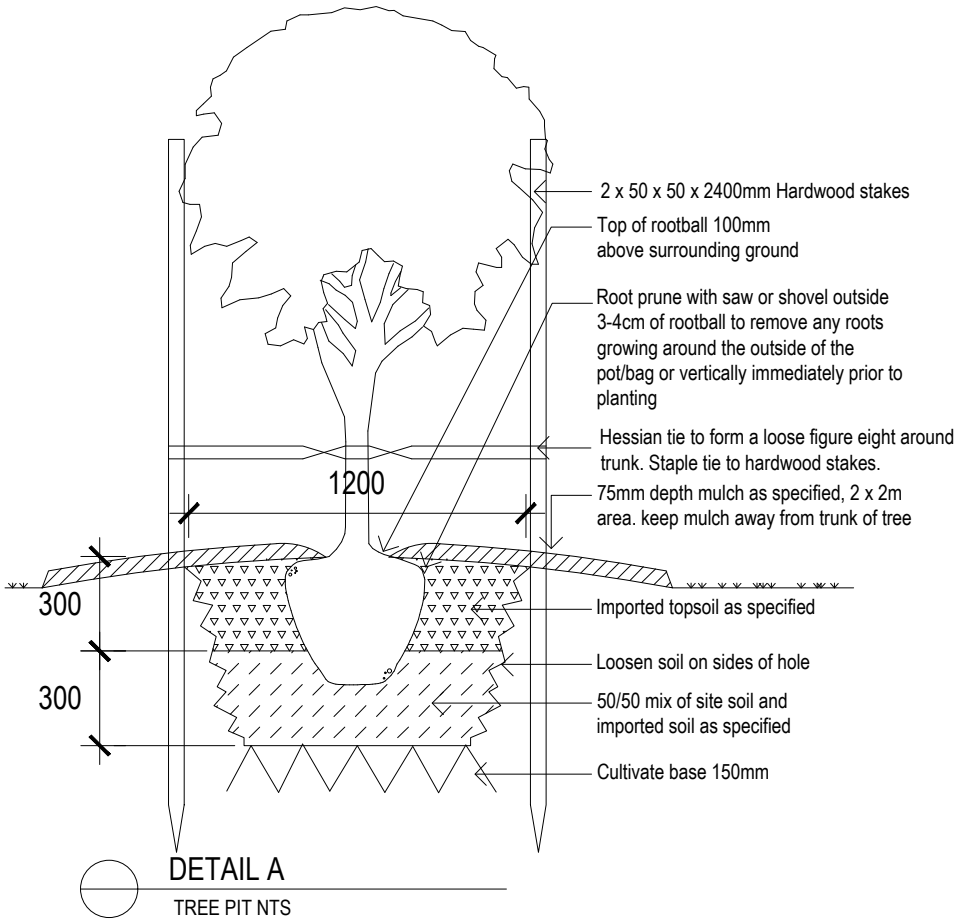
New turf- Matilda Softed Leafed Buffalo. Excavate / grade all areas to be turfed to 120mm below finished levels. Ensure that all surface runoff is directed away from buildings. Ensure that no pooling or ponding will occur. Further rip the subgrade to 150mm. Install 100mm of imported turf underlay. Rolls to be closely butted and laid in a brickwork pattern. Fill any small gaps with topsoil and water thoroughly.

WATERING

Water in immediately after plant installation & allow for soil settlement. For the first 2 to 4 weeks after planting, the root zone & immediate surrounds must be kept moist. Continue watering until plants have established.

RETAINING WALLS & ROOFTOP GARDEN

All retaining walls & rooftop garden to be constructed to Engineer's details. Ensure all internal surfaces are waterproofed. Geotextile wrapped ag. drainage line backfilled with aggregate is to be installed behind all retaining walls & connected to stormwater in accordance with Sydney Water regulations.



NOTES:
- Contractors to check and verify all dimensions and all levels on site prior to any works.
- Any discrepancies should be immediately referred to Space Landscape Designs.
- All work to comply with B.C.A. Statutory Authorities and relevant Australian Standards.
- Dimensions recognised over scaling. All measurements are in millimetres.

Rev. A
Date 17/08/21
Issue DA Issue

Checked CW

S P A C E
LANDSCAPE DESIGNS

Space Landscape Designs Pty Ltd
ABN 60 799 663 674 ACN 139 316 251
info@spacedesigns.com.au
spacedesigns.com.au
P 02 9905 7870 F 02 9905 7657
Suite 138, 117 Old Pittwater Rd,
Brookvale NSW 2100

PROJECT:
New Dwelling
SITE ADDRESS:
552 Pittwater Road, North Manly 2100

CLIENT: **Mr and Mrs Davey**
DRN: **A.Elboz (AILDM 625)**
SCALE: **1:100@A3**
PROJECT NO: **211881**

DRAWING TITLE:
DETAILS & SPECIFICATIONS
DRAWING No:
L-03
Rev: **A**