

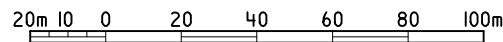


INDICATIVE POWER/FIBRE ROUTE
INDICATIVE ACCESS ROUTE



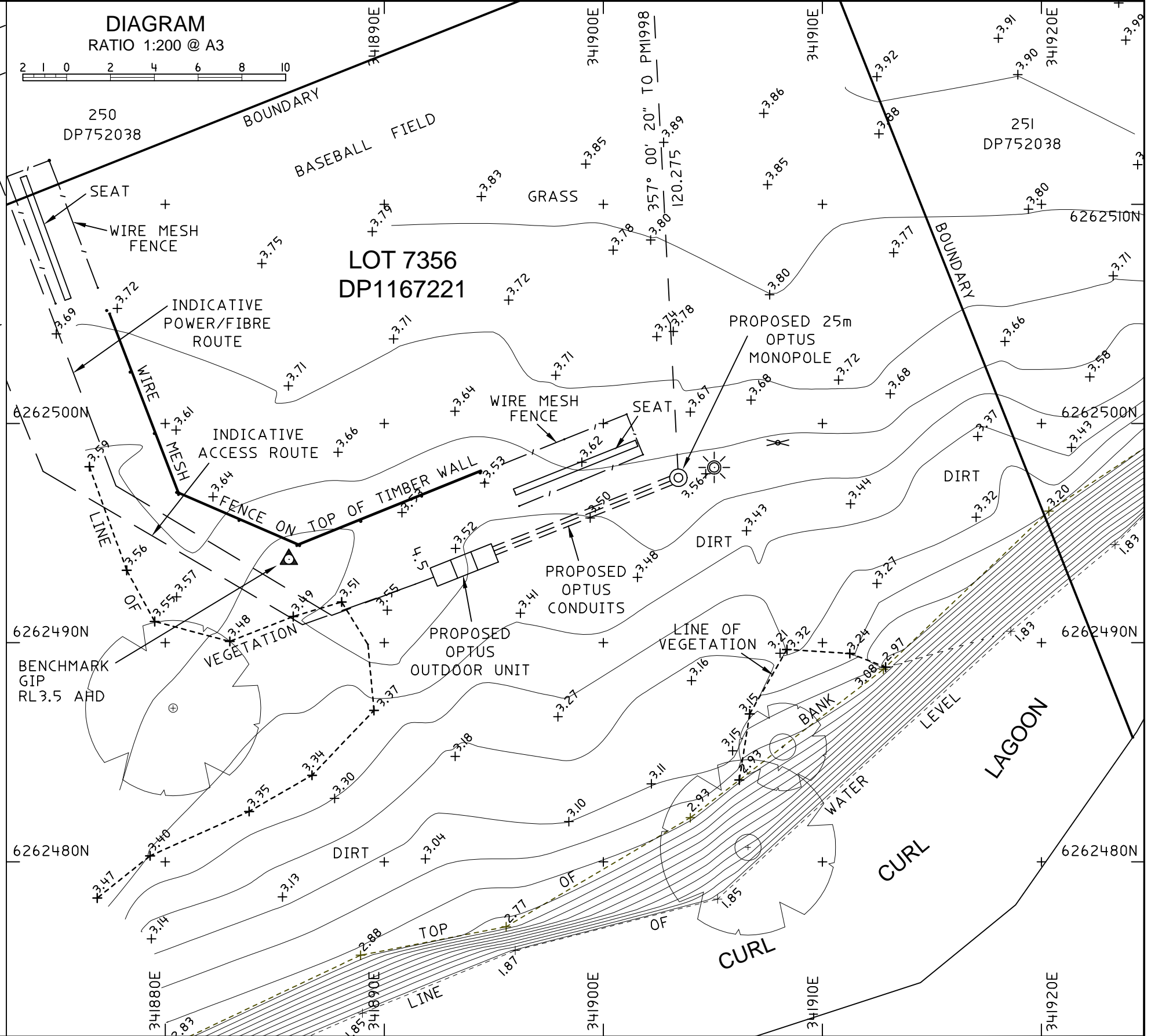
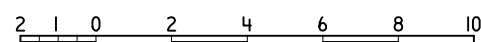
LOCALITY SKETCH

RATIO 1:2000 @ A3



DIAGRAM

RATIO 1:200 @ A3



LEGEND:

- COUNCIL LIGHT POLE (TO BE REMOVED)
- BENCHMARK
- WATER TAP
- FENCELINE
- TREE
- APPROXIMATE EXTENT OF FOLIAGE
- APPROXIMATE TRUNK DIAMETER

NOTE:

1. CO-ORDINATE (MGA Z56) AND AZIMUTH ORIGINS SSM792 AND PMI993
2. AHD ORIGIN SSM792 RL5.847 AS SUPPLIED BY SPATIAL SERVICES DATED 05.03.2019.

CLIENT

URBIS



REVISION	DATE
B ASSETS ADDED	18.09.19
A INITIAL ISSUE	13.03.19

Contour Interval 0.1m
Datum A.H.D.

BM SSM792
RL 5.847

Scale AS SHOWN

Surveyed PB 06.03.2019
Drawn MP 11.03.2019
Checked PB 13.03.2019



Veris Australia Pty Ltd
Head Office (NSW)
Suite 1, Level 5, 8 Australia Ave,
Olympic Park NSW 2127.
PO Box 6606,
Silverwater, NSW, 1811.
t: 1300 765 315
email: info.nsw@veris.com.au
web site: www.veris.com.au

SITE SURVEY PLAN

JOHN FISHER PARK
ABBOTT ROAD,
NORTH CURL CURL, NSW, 2099.
SITE No.S2711 (LOT 7356 DP1167221)

Proj No. 219507.002 **Rev B**

Sheet No. 1 of 1
219507_SSP_REV.B.DWG
© Veris Australia Pty Limited ABN 53 615 735 727 A3