

800x800 HOOD 1 EXHAUST AIR DUCT RISER TO ABOVE.

TWO (2) OFF 750x750 KITCHEN MAKE UP AIR DUCT DROPPERS FROM EVAPORATIVE COOLER ABOVE.

REFRIGERANT PIPE RISER TO ABOVE.

450x450 FRESH AIR INTAKE DUCT DROPPER FROM ABOVE.

AIR CONDITIONING TEMPERATURE SENSOR LOCATED IN RETURN AIR GRILLE.

1200x600 RETURN AIR GRILLE C/W INSULATED PLENUM BOX ABOVE.

NEW TEMPERZONE 34kW INDOOR DUCTED - ISD 351 MODEL.

ALL KITCHEN EXHAUST HOOD DUCT DROPPERS ARE 500x500 IN SIZE.

TEN (10) OFF 600x600 MAKEUP AIR SQUARE DIFFUSERS C/W PLENUM BOXES ABOVE.

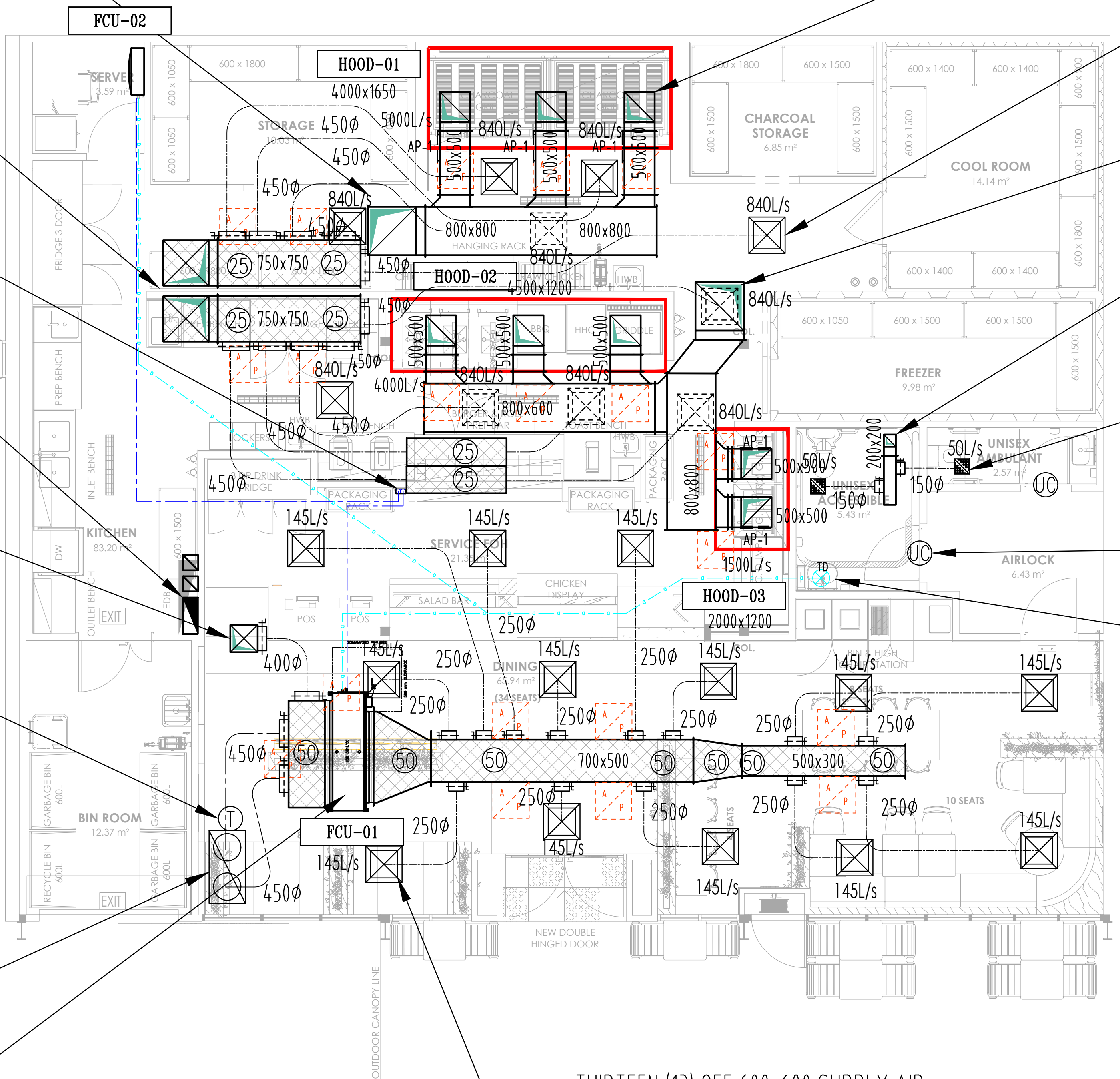
800x800 HOOD 2&3 EXHAUST AIR DUCT RISER TO ABOVE.

200x200 TOILET EXHAUST AIR DUCT RISER TO ABOVE.

250x250 TOILET EXHAUST EGGCRATE GRILLE C/W OBD. TYPICAL

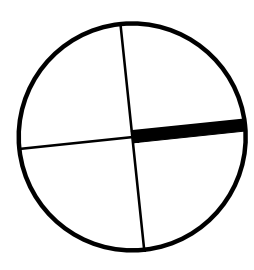
20mm UNDERCUT FOR TOILET MAKE UP AIR. -TYPICAL.

CONDENSATE DRAINAGE TO TUNDISH.



THIRTEEN (13) OFF 600x600 SUPPLY AIR SQUARE DIFFUSERS C/W INSULATED PLENUM BOXES ABOVE.

P1	PRELIMINARY	08.08.24
REV. NO.	REASON	DATE
REVISIONS		



CLIENT:

ARCHITECT:

Level 1, 51-57 Buckhurst Street, South Melbourne, VIC 3205
(03) 9417 4272 info@zonedesign.com.au
www.zonedesign.com.au

ABN 79 121 083 305

MECH CONSULTANT:

ISO 9001 Certified
ISO 14001 Certified
ISO 45001 Certified
info@engineuitydc.com.au
W: www.engineuitydc.com.au

TITLE

MECHANICAL SERVICES
PROPOSED GROUND FLOOR PLAN

PROJECT

EL JANNAH WARRINGAH MALL

SHOP 2006/8, CROSS ST, BROOKVALE, NSW 2100.

DRAWN BY	SK	TYPE OF ISSUE	PRELIMINARY
CHECKED BY	PH	JOB No.	24059
SCALE	1:50 @ A1	DRAWING No.	M02
ISSUE DATE	AUG 2024	REVISION	P1

800x800 HOOD 1 EXHAUST AIR DUCT RISER FROM BELOW.

TWO (2) OFF 750x750 KITCHEN MAKE UP AIR DUCT DROPPERS FROM EVAPORATIVE COOLER TO BELOW. -25mm INTERNAL INSULATION FOR DUCTWORK ON ROOF.

TWO OFF NEW EVAP COOLER SYSTEMS ON ROOF.

NEW MECHANICAL LIFTING WINCH FOR FILTER SERVICE & MAINTENANCE ON ROOF.

EXISTING ACCESS LADDER TO ROOF.

NEW STAIRS.

REFRIGERANT PIPE RISER TO BELOW.

450x450 FRESH AIR INTAKE DUCT DROPPER TO BELOW SERVING FCU-01.

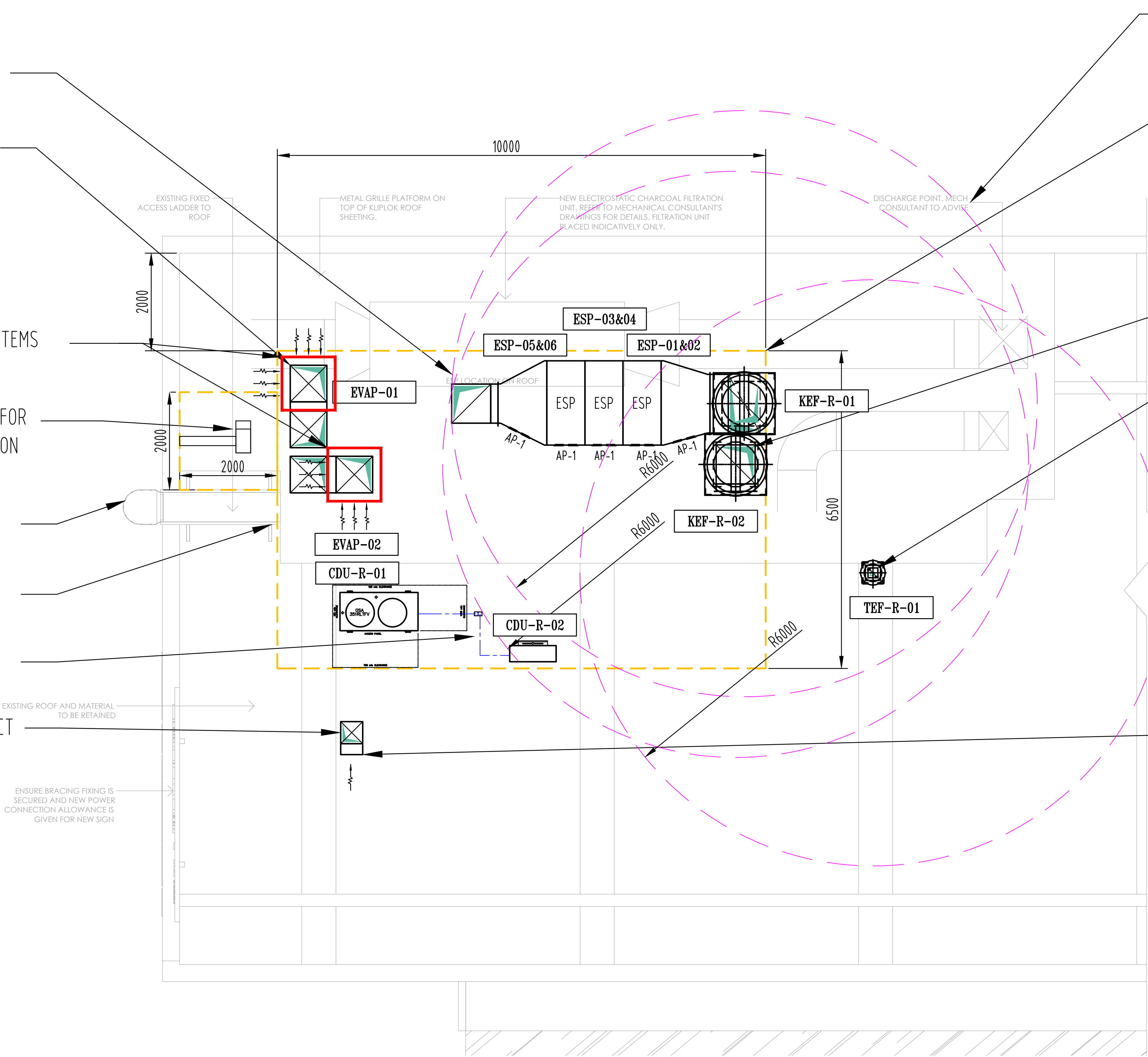
ALL EXHAUST DISCHARGE ON ROOF TO BE 6 METERS AWAY FROM FRESH AIR INTAKE..

STEEL PLATFORM TO STRUCTURAL ENGINEERS DETAILS C/W KICKRAIL, GUARD RAILS AND TREAD MESH FLOORING.

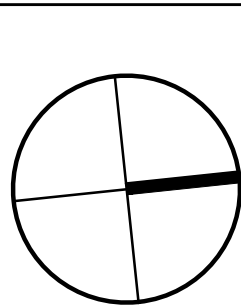
800x800 HOOD 2&3 EXHAUST AIR DUCT RISER TO ABOVE.

200x200 TOILET EXHAUST AIR DUCT RISER FROM BELOW.

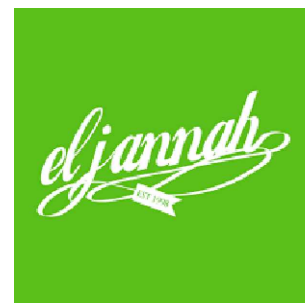
450x450 OUTSIDE AIR INTAKE C/W VERMINE PROOF MESH.



P1	PRELIMINARY	08.08.24
REV. NO.	REASON	DATE
REVISIONS		



CLIENT:



ARCHITECT:



MECH CONSULTANT:



TITLE

MECHANICAL SERVICES
PROPOSED ROOF PLAN

PROJECT

EL JANNAH WARRINGAH
MALL
SHOP 2006/8, CROSS ST,
BROOKVALE, NSW 2100.

DRAWN BY

SK

CHECKED BY

PH

SCALE

1:50 @ A1

ISSUE DATE

AUG 2024

TYPE OF ISSUE

PRELIMINARY

JOB No.

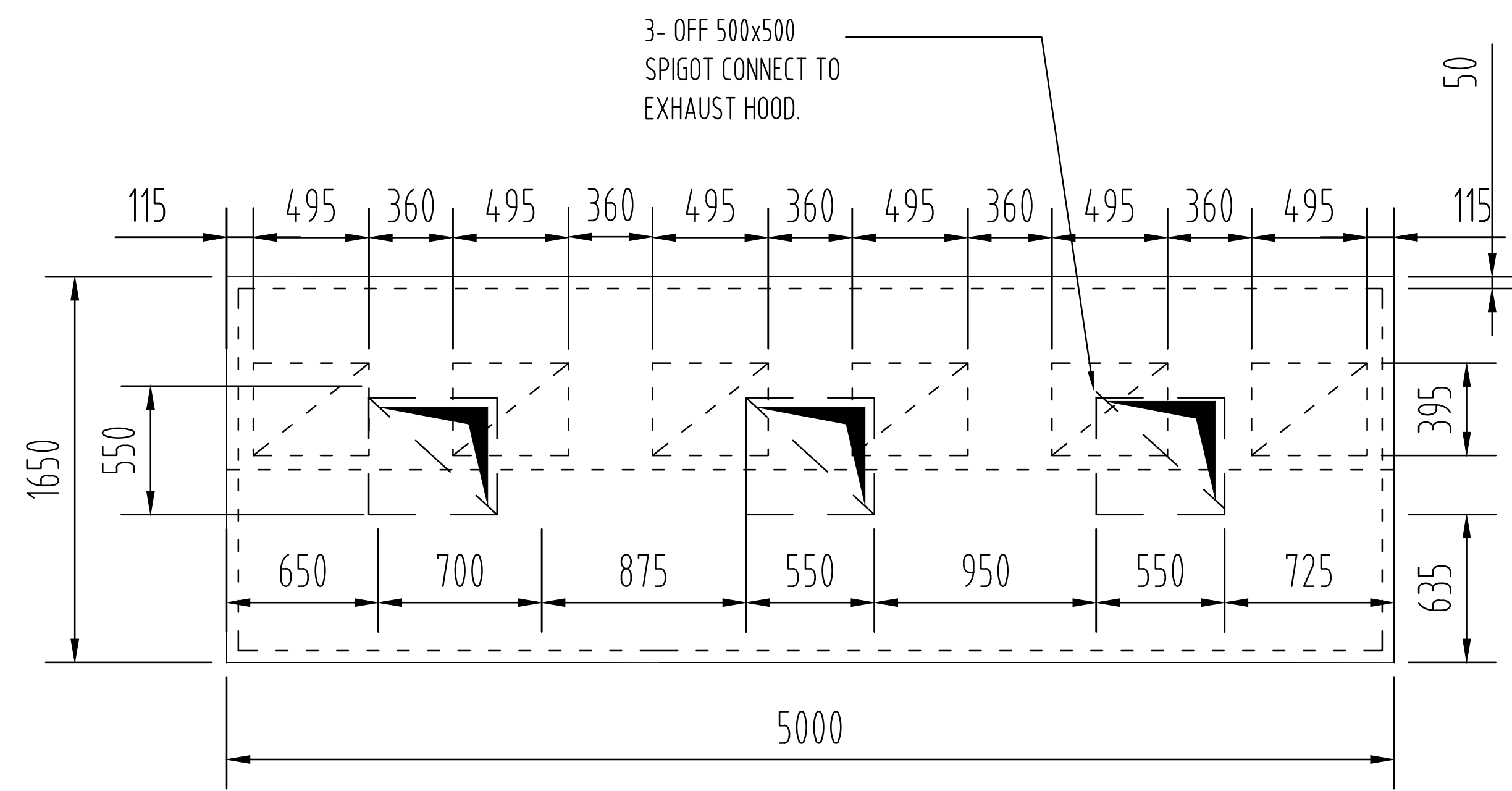
24059

DRAWING No.

REVISION

M03

P1



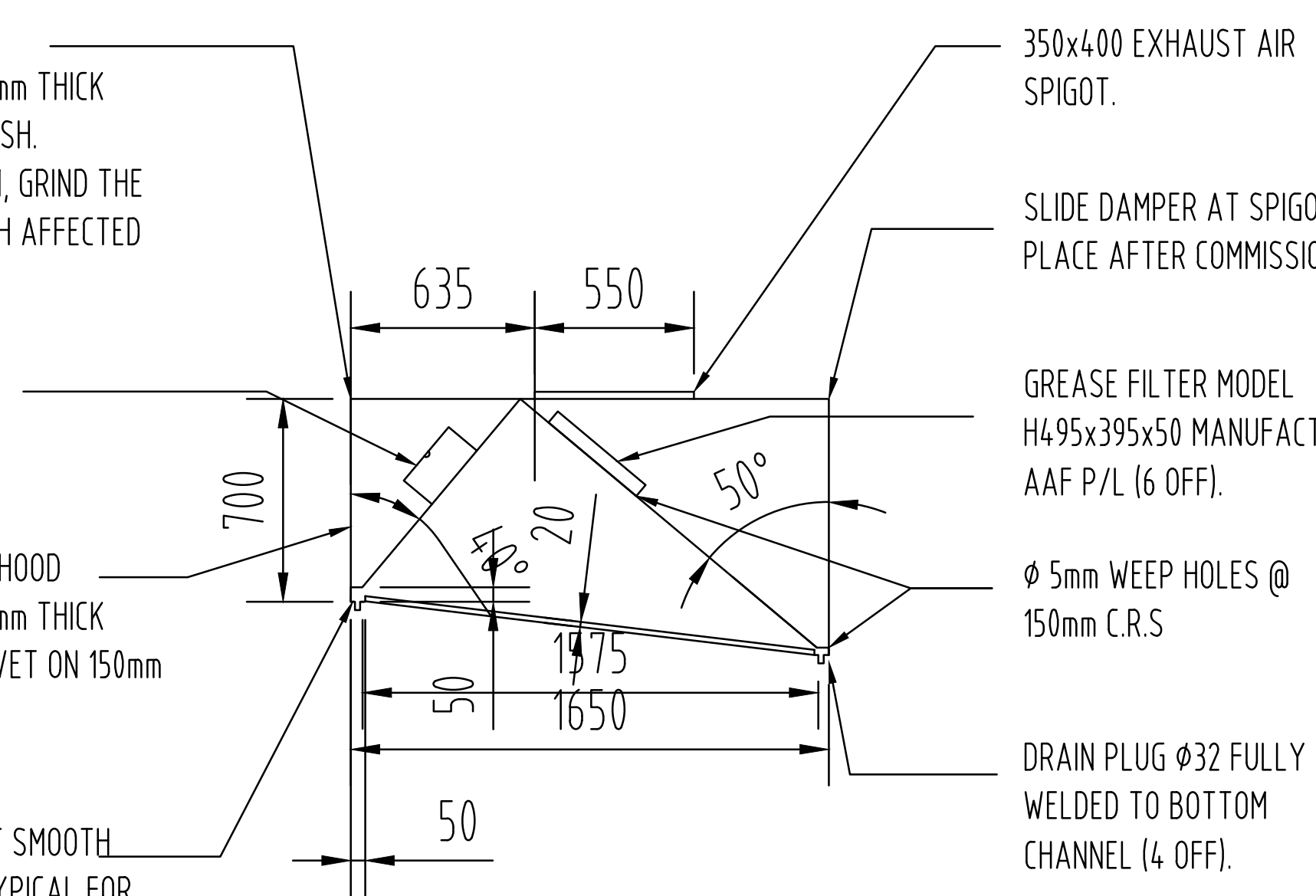
PLAN

FRONT AND SIDE OF HOOD
MANUFACTURED FROM 1.2mm THICK
STAINLESS STEEL, 2B FINISH.
CONTINUOUSLY WELD SEAM, GRIND THE
WELD SMOOTH AND POLISH AFFECTED
AREAS.

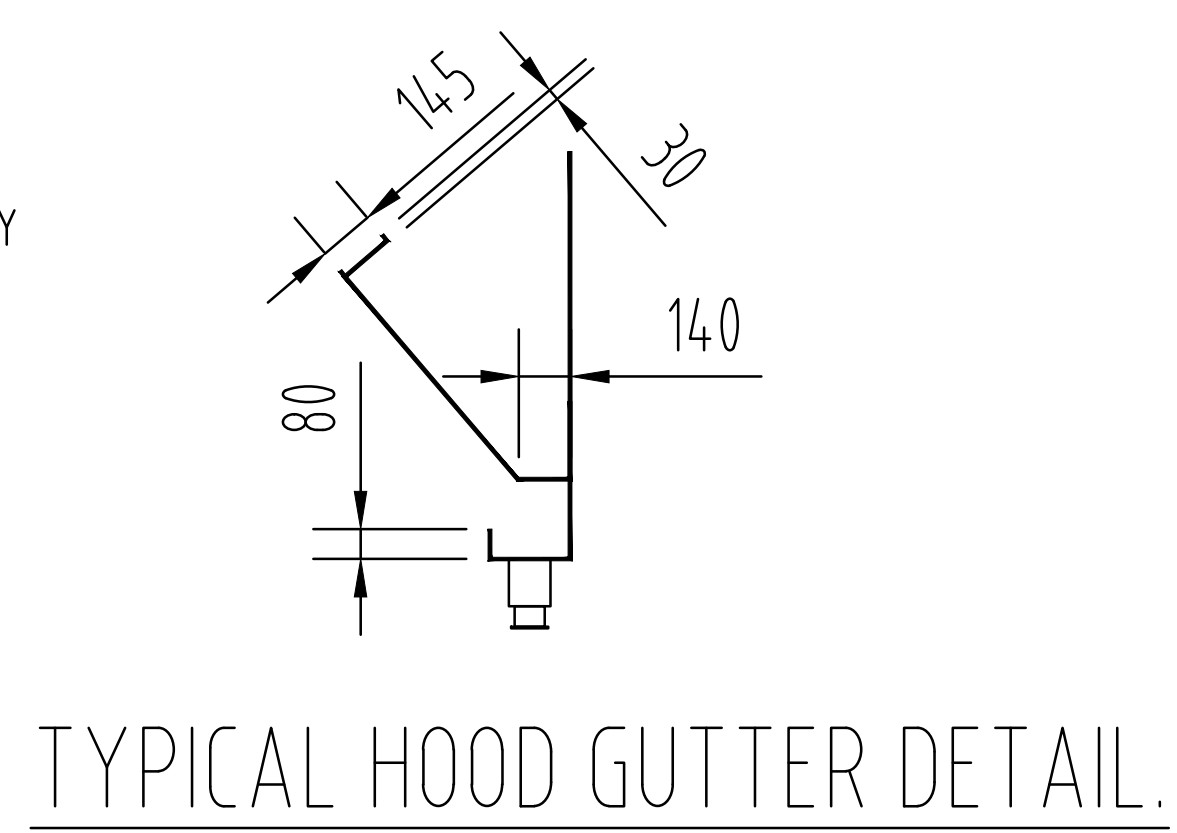
HEAT RESISTANT
FLUORESCENT LIGHTS

TOP, BACK AND SIDES OF HOOD
MANUFACTURED FROM 1.2mm THICK
STAINLESS STEEL POP RIVET ON 150mm
CRS. AND SILICON SEAL.

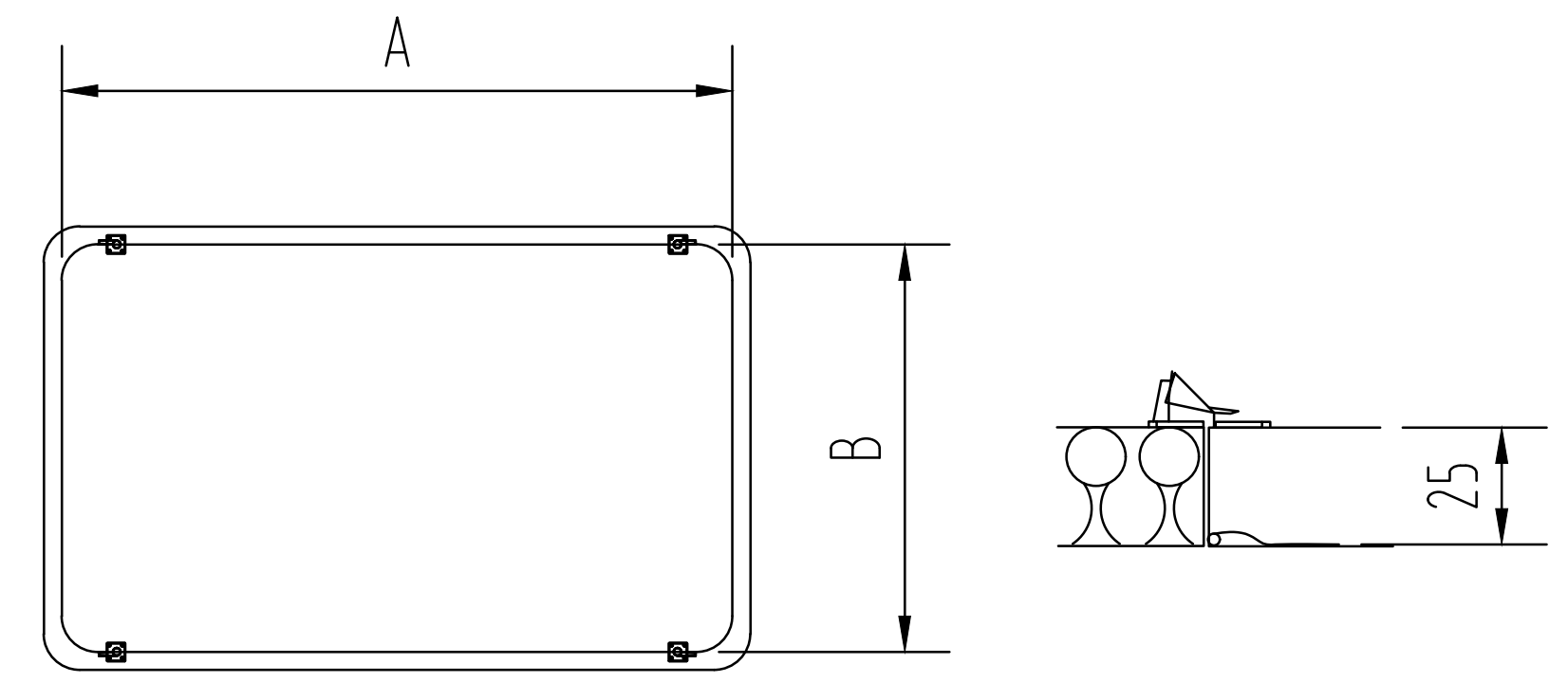
EDGE ROLLED TO PRESENT SMOOTH
FINISH TO CHANNEL UP, TYPICAL FOR
FULL HOOD PERIMETER.



SECTION

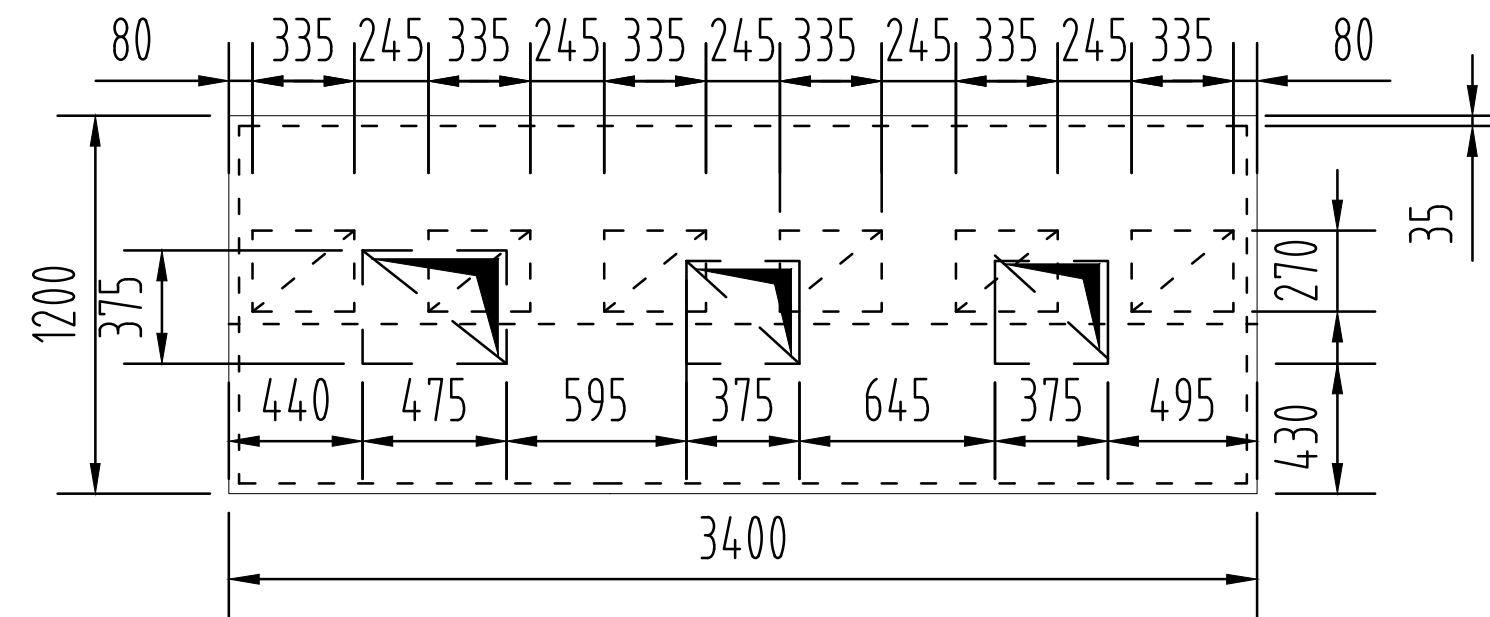
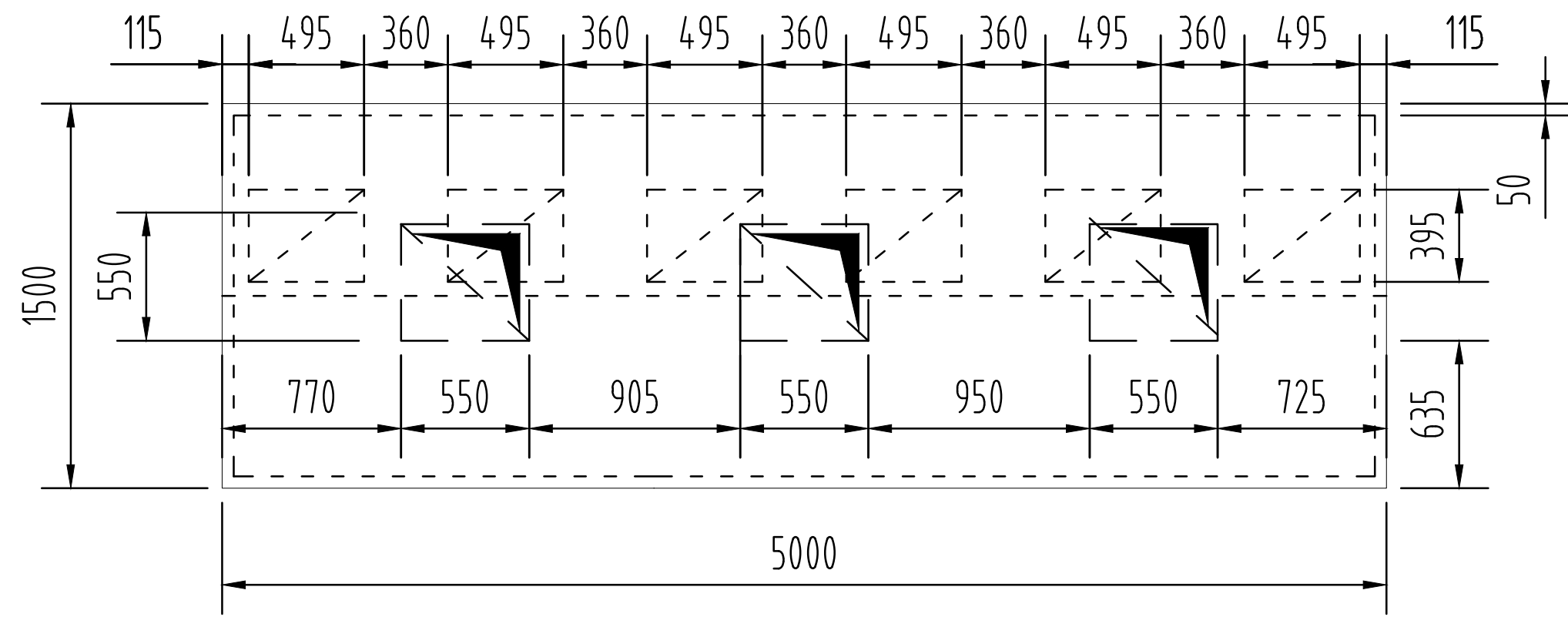


EL Jannah HOOD DETAIL.



TYPICAL ACCESS PANEL DETAIL.

AP MODEL	AxB	No. of CAMLOCKS
0	648 x 500	4
1	500 x 368	4
2	375 x 241	2
3	241 x 149	2



FRONT AND SIDE OF HOOD
MANUFACTURED FROM 1.2mm THICK
STAINLESS STEEL, 2B FINISH.
CONTINUOUSLY WELD SEAM, GRIND THE
WELD SMOOTH AND POLISH AFFECTED
AREAS.

HEAT RESISTANT
FLUORESCENT LIGHTS

TOP, BACK AND SIDES OF HOOD
MANUFACTURED FROM 1.2mm THICK
STAINLESS STEEL POP RIVET ON 150mm
CRS. AND SILICON SEAL.

EDGE ROLLED TO PRESENT SMOOTH
FINISH TO CHANNEL UP, TYPICAL FOR
FULL HOOD PERIMETER.

SECTION

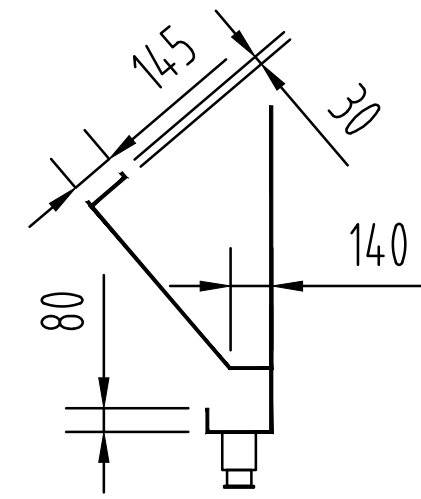
350x400 EXHAUST AIR
SPIGOT.

SLIDE DAMPER AT SPIGOT P.K. SCREW IN
PLACE AFTER COMMISSIONING.

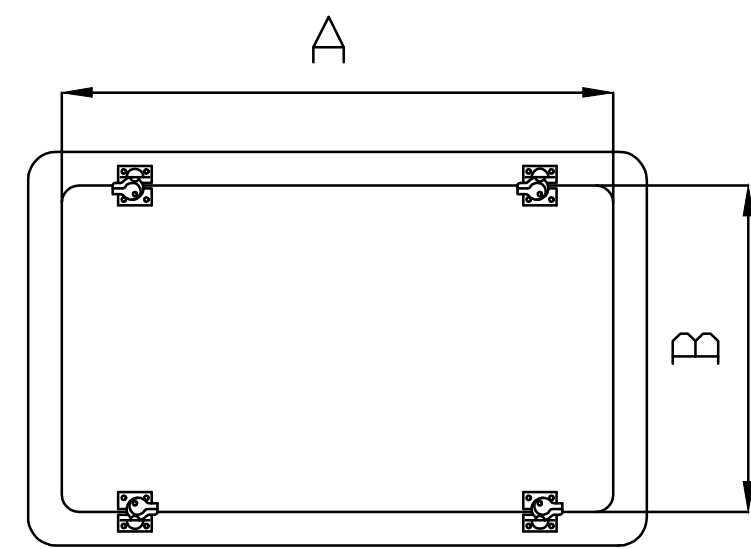
GREASE FILTER MODEL
H495x395x50 MANUFACTURED BY
AAF P/L (6 OFF).

Ø 5mm WEEP HOLES @
150mm C.R.S

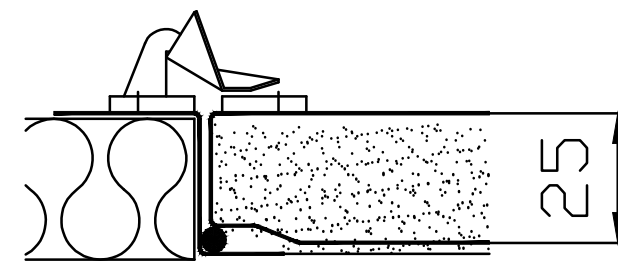
DRAIN PLUG Ø32 FULLY
WELDED TO BOTTOM
CHANNEL (4 OFF).



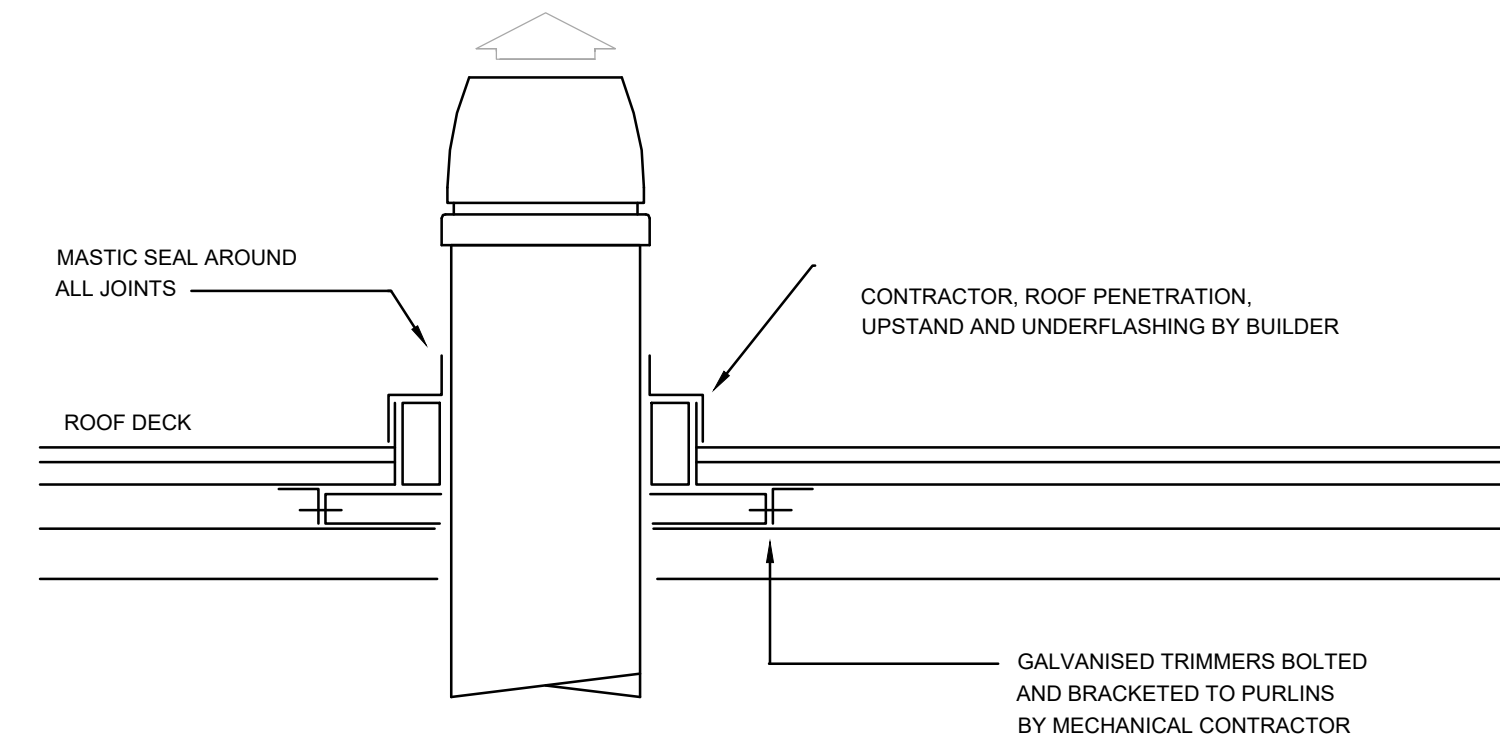
TYPICAL HOOD GUTTER DETAIL.



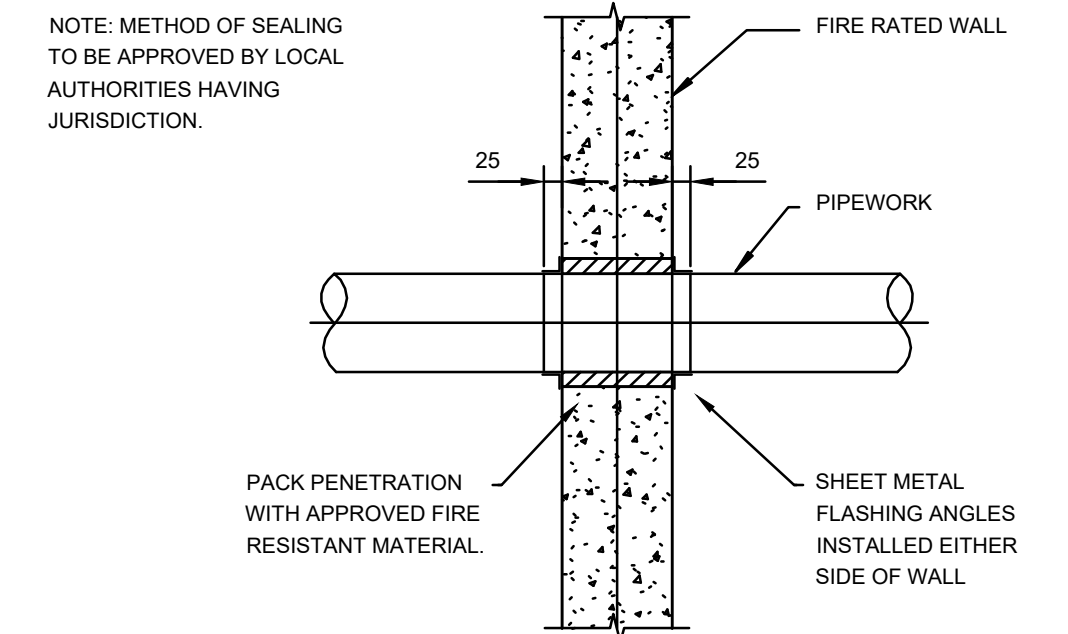
TYPICAL ACCESS PANEL DETAIL



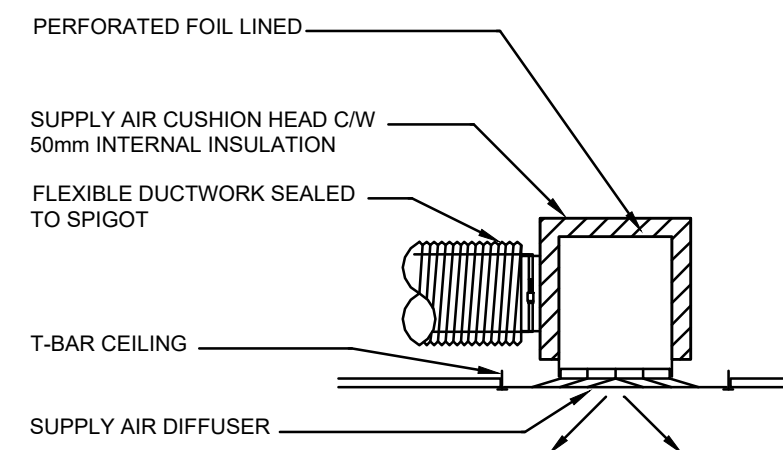
AP MODEL	A x B	No OF CAMLOCKS
0	648 x 500	4
1	500 x 368	4
2	375 x 241	2
3	241 x 149	2



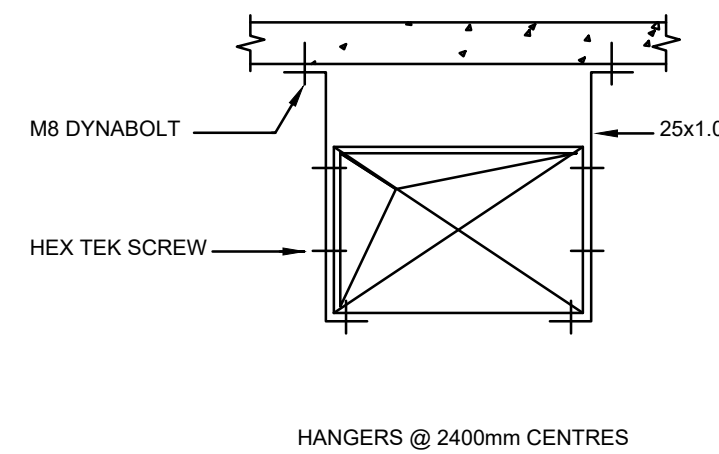
ROOF PENETRATION AND VERTICAL DISCHARGE



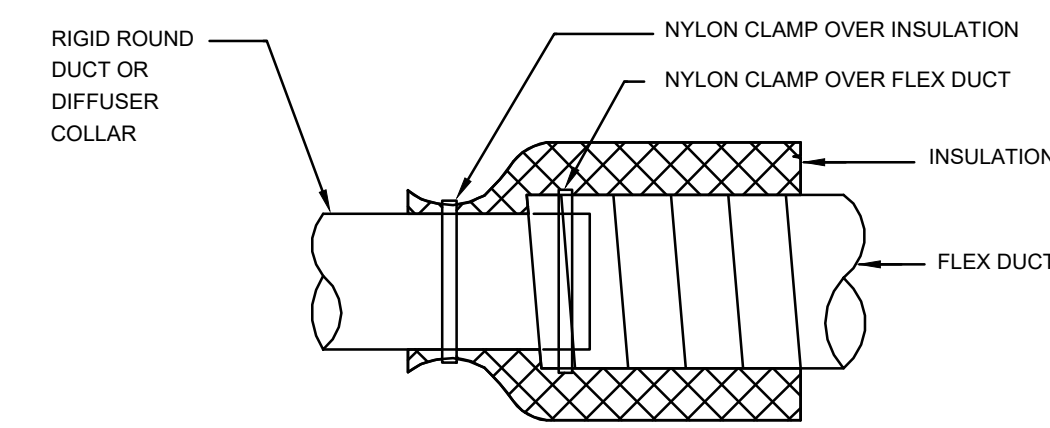
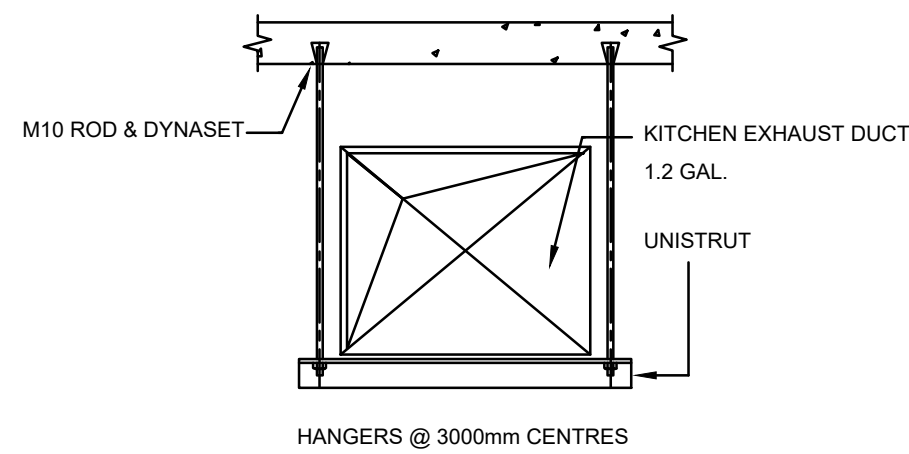
TYPICAL FIRE RATED WALL PIPE PENETRATION DETAIL (NON-INSULATED)



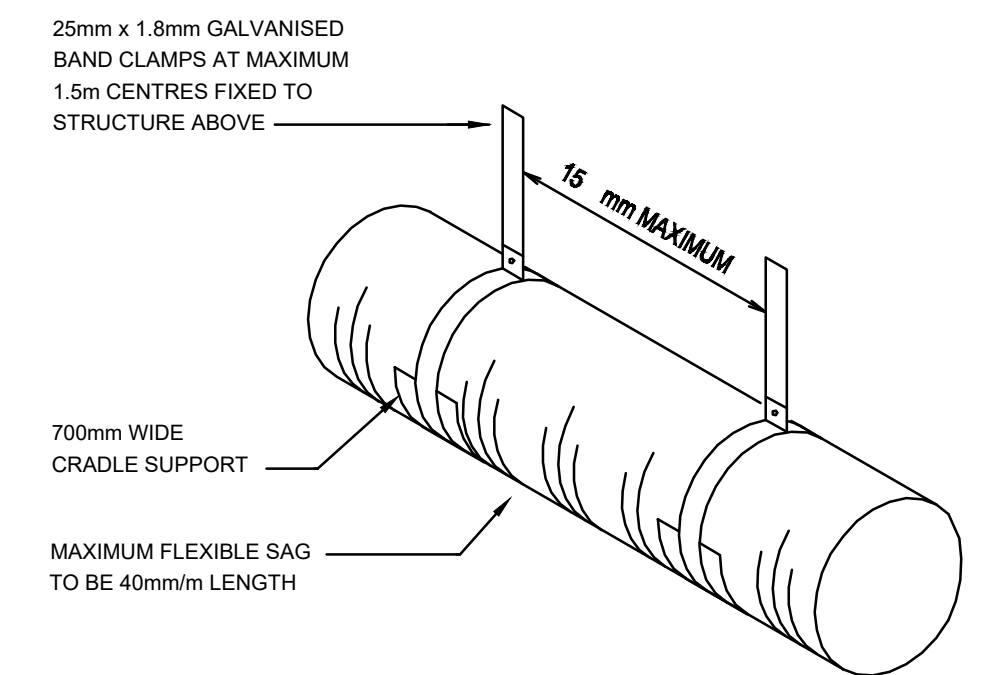
TYPICAL PLENUM DETAIL



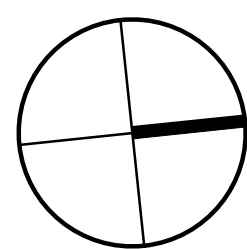
DUCT HANGER DETAIL



FLEXIBLE DUCT CONNECTING DETAIL



P1	PRELIMINARY	08.08.24
REV. NO.	REASON	DATE
REVISIONS		



CLIENT:



ARCHITECT:



MECH CONSULTANT:



TITLE

MECHANICAL SERVICES
INSTALLATION DETAILS

PROJECT

EL JANNAH WARRINGAH
MALL

SHOP 2006/8, CROSS ST,
BROOKVALE, NSW 2100.

DRAWN BY

SK

CHECKED BY

PH

SCALE

NTS @ A1

ISSUE DATE

AUG 2024

TYPE OF ISSUE

PRELIMINARY

JOB No.

24059

DRAWING No.

M06

REVISION

P1

							  	MECHANICAL SERVICES MECHANICAL SPECIFICATIONS	PROJECT EL JANNAH WARRINGAH MALL SHOP 2006/8, CROSS ST, BROOKVALE, NSW 2100.	DRAWN BY SK	TYPE OF ISSUE PRELIMINARY	
										CHECKED BY PH	JOB No. 24059	
P1	PRELIMINARY	08.08.24								SCALE NTS @ A1	DRAWING No. M07	REVISION P1
REV. NO.	REASON	DATE								ISSUE DATE AUG 2024		
REVISIONS												