

CUTLER ROAD

33 MOORE STREET. PARAPET RL 51.03

07-S4.55

WINDOWS (48.64 H, 47.33 S) (45.58 H, 44.22 S)

PARAPET 51.03

2 STOREY BRICK RESIDENCE FLAT ROOF No. 100

WINDOW (48.60 H, 47.53 S) WINDOW (45.59 H, 44.31 S)

DECK 43.47

2 5680

RL. 38.988 m

BOUNDARY

RL. 42.012 m

BLOCK WALL

WINDOW (45.59 H, 44.50 S)

1412

9582

RL. 34.185 m

2.1

6

18

16.1

7

17

RL. 34.185 m

09-S4.5

3

BOUNDARY

CUTLER ROAD N 98

RL. 34.035 m

RL. 34.035 m

RL. 48.500 m

RL. 41.929 m

09-S4.55

1

BALCONY 48.27

2178

2.2

BOUNDARY

TIMBER FENCE

BRICK WALL

BOUNDARY

9045

2 STOREY BRICK RESIDENCE TILE ROOF

AWNING 50.95

33.48
ROOF 36.02
GARAGE FLOOR 33.41
BLOCK GARAGE 36.05
DECK AREA 36.05

96 CUTLER RIDGE RL 51.40

43.38
DECK AREA

GUTTER 49.17

08-S4.55

2

WINDOWS (45.59 H, 44.30 S) (48.58 H, 46.44 S)

WINDOW (48.58 H, 47.68 S)

WINDOWS (45.59 H, 44.30 S) (48.58 H, 47.18 S)

GUTTER 45.72

BALCONY 46.36

2 STOREY RENDERED RESIDENCE TILE ROOF No.96

SITE PLAN



1 : 100

THIS PLAN IS TO BE READ IN CONJUNCTION WITH THE CONDITIONS OF DEVELOPMENT CONSENT

MOD2020/0049

SCHEDULE OF MODIFICATIONS SOUGHT

LEVEL 1 MODIFICATIONS

- 1. Proposed storage space
- 2.1 Proposed front boundary security gate
- 2.2 Gas - Electric and water meter

LEVEL 2 MODIFICATIONS

- 3. Modified Deck adjacent to suspended landscape garden & glass barrier.
- 4. Proposed structural blade wall
- 5. Proposed modified floor layout including additional bedroom and associated windows
- 6. Proposed ensuite 3 and associated windows
- 6.1 Structural column

LEVEL 3 MODIFICATIONS

- 7. Modified floor area to ensuite 1 and associated windows
- 8. Modified windows to Bed 2
- 9. Modified door and side-light height
- 10. Replace Bi-fold doors with window 3.6
- 11. Window location modified
- 12. Proposed external door
- 13. Proposed increase to Bed 3 floor area
- 14. Modified window height
- 15. Modified window height
- 15.1 Modified bedroom area
- 16. Modified Door heights
- 16.1 Concrete slab above entry

LEVEL 4 MODIFICATIONS

- 17. Extend terrace
- 18. Proposed additional floor area to kitchen + modified kitchen windows
- 19. Modified pantry window
- 20. Modified pantry window
- 21. Remove existing chimney
- 22. Modified window height
- 23. Modified door height

RIDGE 50.59



ARCLAB PTY LTD
 A.C.N. 143472762
 PO Box 1239 Newport Beach
 NSW 2106 Australia
 Telephone +61 416 886 537
 email: arc@arclab.com.au
 www.arclab.com.au

SHEET TITLE
SITE PLAN

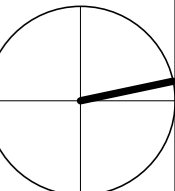
PROJECT ADDRESS
98 CUTLER ROAD,
CLONTARF

CLIENT
BOWES HOUSE

DOCUMENTATION
-

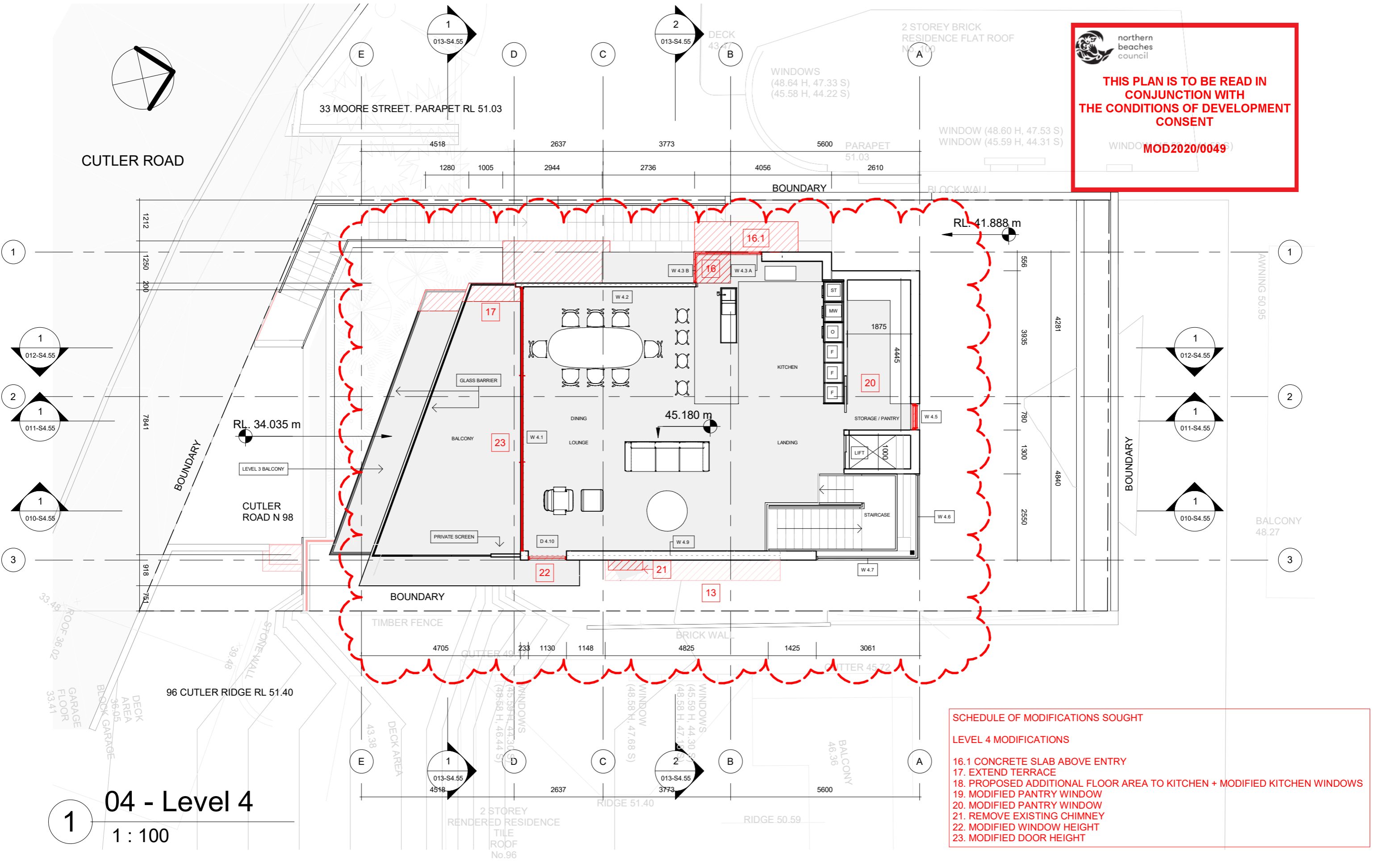
All works to be in accordance with Australian Standards, The Building Code of Australia, other relevant codes, and with Manufacturers' recommendations and instructions. Do not scale from drawings.
 Verify all dimensions on site prior to construction.
 The drawing is copyright and may not be used without written consent from ARCLAB PTY LTD.

Drawn	Scale	Sheet	Date	Job N°.	Sheet N°	Issue/Revision
Author	1 : 100	A 3	14.8.19	0155-19	02-S4.55	



northern beaches council

THIS PLAN IS TO BE READ IN CONJUNCTION WITH THE CONDITIONS OF DEVELOPMENT CONSENT MOD2020/0049



- SCHEDULE OF MODIFICATIONS SOUGHT**
- LEVEL 4 MODIFICATIONS**
- 16.1 CONCRETE SLAB ABOVE ENTRY
 - 17. EXTEND TERRACE
 - 18. PROPOSED ADDITIONAL FLOOR AREA TO KITCHEN + MODIFIED KITCHEN WINDOWS
 - 19. MODIFIED PANTRY WINDOW
 - 20. MODIFIED PANTRY WINDOW
 - 21. REMOVE EXISTING CHIMNEY
 - 22. MODIFIED WINDOW HEIGHT
 - 23. MODIFIED DOOR HEIGHT

04 - Level 4

1 : 100

arclab .com.au
 custom-designed homes

ARCLAB PTY LTD
 A.C.N. 143472762
 PO Box 1239 Newport Beach
 NSW 2106 Australia
 Telephone +61 416 886 537
 email: arc@arclab.com.au
 www.arclab.com.au

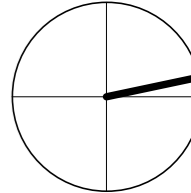
SHEET TITLE
 PROPOSED LEVEL 4

PROJECT ADDRESS
 98 CUTLER ROAD,
 CLONTARF

CLIENT
 BOWES HOUSE
 DOCUMENTATION

All works to be in accordance with Australian Standards, The Building Code of Australia, other relevant codes, and with Manufacturers' recommendations and instructions. Do not scale from drawings.
 Verify all dimensions on site prior to construction.
 The drawing is copyright and may not be used without written consent from ARCLAB PTY LTD.

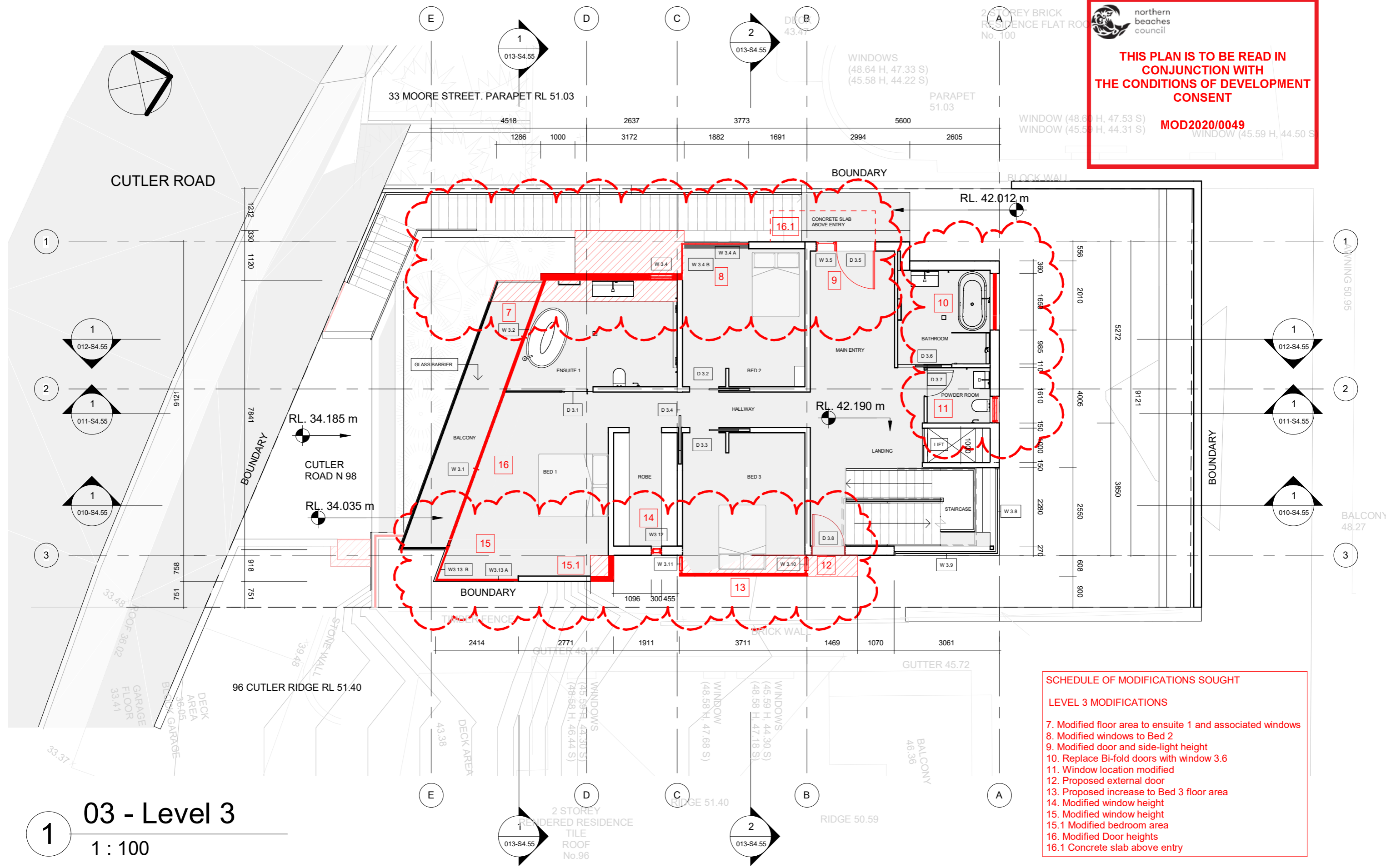
Drawn	Scale	Sheet	Date	Job N°.	Sheet N°	Issue/Revision
Author	1 : 100	A 3	14.8.19	0155-19	03-S4.55	





THIS PLAN IS TO BE READ IN CONJUNCTION WITH THE CONDITIONS OF DEVELOPMENT CONSENT

MOD2020/0049



- SCHEDULE OF MODIFICATIONS SOUGHT**
- LEVEL 3 MODIFICATIONS**
- 7. Modified floor area to ensuite 1 and associated windows
 - 8. Modified windows to Bed 2
 - 9. Modified door and side-light height
 - 10. Replace Bi-fold doors with window 3.6
 - 11. Window location modified
 - 12. Proposed external door
 - 13. Proposed increase to Bed 3 floor area
 - 14. Modified window height
 - 15. Modified window height
 - 15.1 Modified bedroom area
 - 16. Modified Door heights
 - 16.1 Concrete slab above entry

03 - Level 3
1 : 100



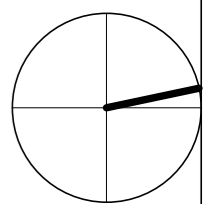
ARCLAB PTY LTD
A.C.N. 143472762
PO Box 1239 Newport Beach
NSW 2106 Australia
Telephone +61 416 886 537
email: arc@arclab.com.au
www.arclab.com.au

SHEET TITLE
PROPOSED LEVEL 3
PROJECT ADDRESS
98 CUTLER ROAD,
CLONTARF

CLIENT
BOWES HOUSE
DOCUMENTATION
-

All works to be in accordance with Australian Standards, The Building Code of Australia, other relevant codes, and with Manufacturers' recommendations and instructions. Do not scale from drawings.
Verify all dimensions on site prior to construction.
The drawing is copyright and may not be used without written consent from ARCLAB PTY LTD.

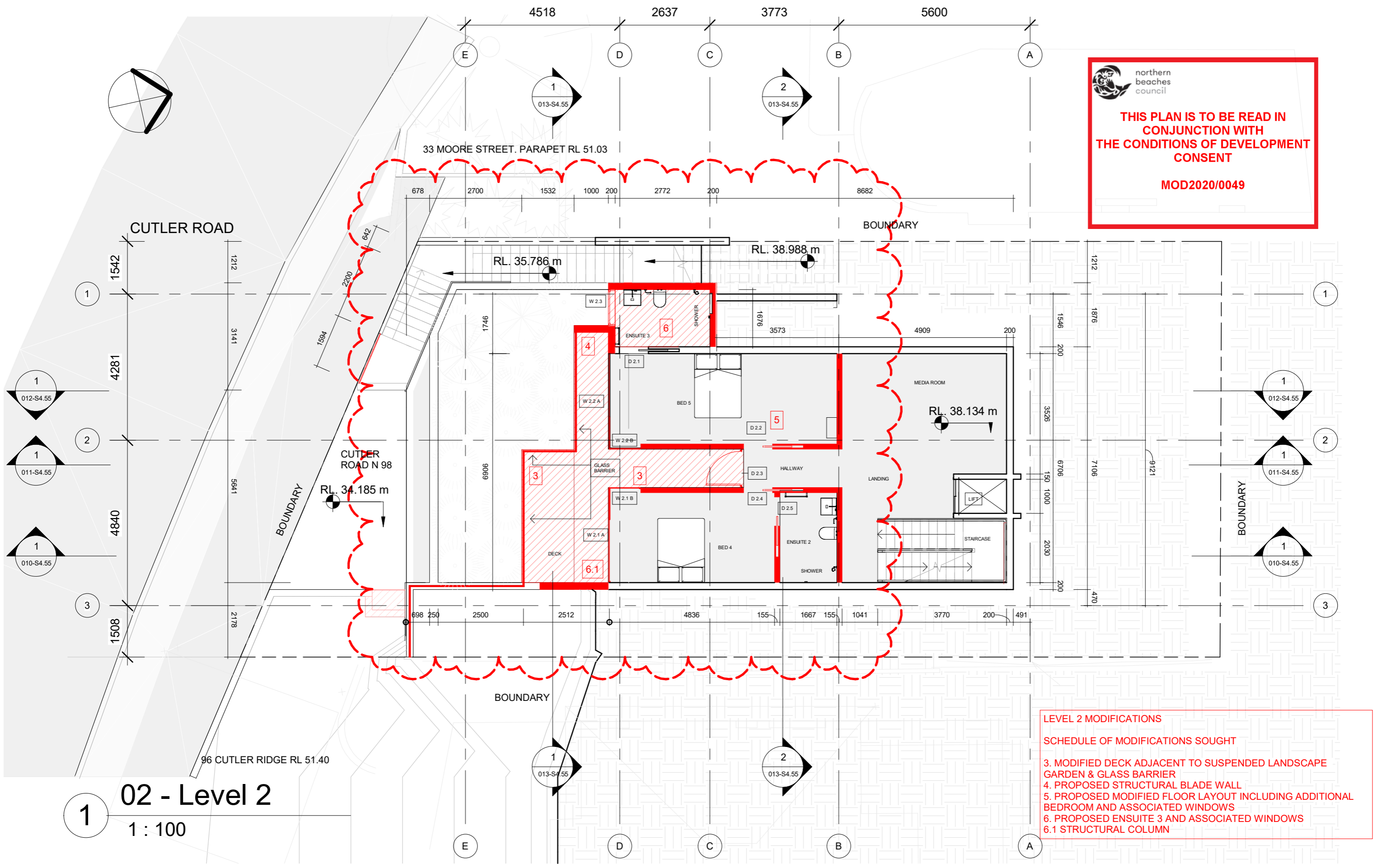
Drawn	Scale	Sheet	Date	Job N°.	Sheet N°	Issue/Revision
Author	1 : 100	A 3	14.8.19	0155-19	04-S4.55	



northern beaches council

THIS PLAN IS TO BE READ IN CONJUNCTION WITH THE CONDITIONS OF DEVELOPMENT CONSENT

MOD2020/0049



LEVEL 2 MODIFICATIONS

SCHEDULE OF MODIFICATIONS SOUGHT

3. MODIFIED DECK ADJACENT TO SUSPENDED LANDSCAPE GARDEN & GLASS BARRIER

4. PROPOSED STRUCTURAL BLADE WALL

5. PROPOSED MODIFIED FLOOR LAYOUT INCLUDING ADDITIONAL BEDROOM AND ASSOCIATED WINDOWS

6. PROPOSED ENSUITE 3 AND ASSOCIATED WINDOWS

6.1 STRUCTURAL COLUMN

02 - Level 2

1 : 100

arclab .com.au
 custom-designed homes

ARCLAB PTY LTD
 A.C.N. 143472762
 PO Box 1239 Newport Beach
 NSW 2106 Australia
 Telephone +61 416 886 537
 email: arc@arclab.com.au
 www.arclab.com.au

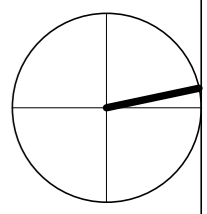
SHEET TITLE
 PROPOSED LEVEL 2

PROJECT ADDRESS
 98 CUTLER ROAD,
 CLONTARF

CLIENT
 BOWES HOUSE
 DOCUMENTATION

All works to be in accordance with Australian Standards, The Building Code of Australia, other relevant codes, and with Manufacturers' recommendations and instructions. Do not scale from drawings.
 Verify all dimensions on site prior to construction.
 The drawing is copyright and may not be used without written consent from ARCLAB PTY LTD.

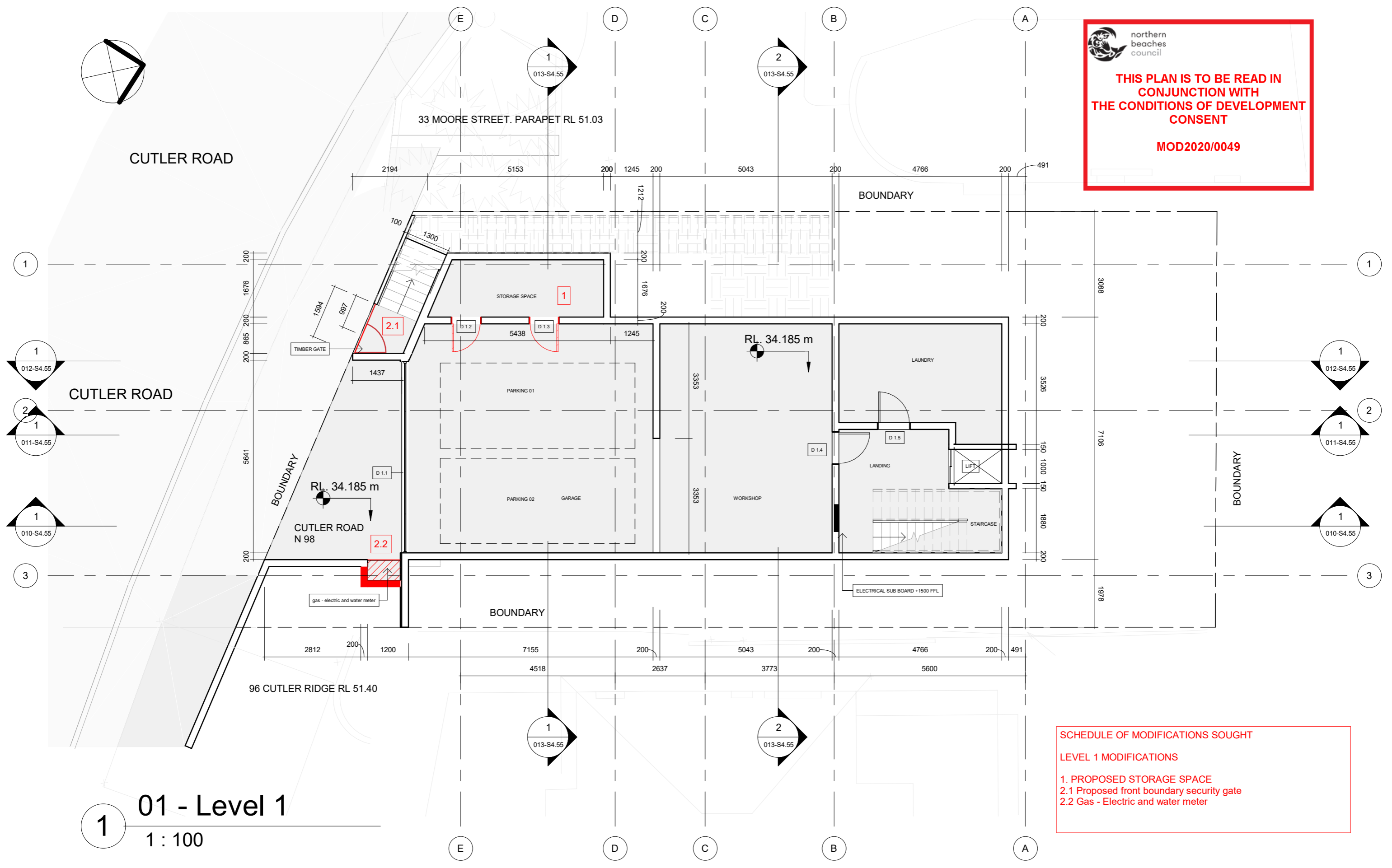
Drawn	Scale	Sheet	Date	Job N°	Sheet N°	Issue/Revision
Author	1 : 100	A 3	14.8.19	0155-19	05-S4.55	



northern beaches council

THIS PLAN IS TO BE READ IN CONJUNCTION WITH THE CONDITIONS OF DEVELOPMENT CONSENT

MOD2020/0049



SCHEDULE OF MODIFICATIONS SOUGHT

LEVEL 1 MODIFICATIONS

1. PROPOSED STORAGE SPACE
 2.1 Proposed front boundary security gate
 2.2 Gas - Electric and water meter

1 **01 - Level 1**
 1 : 100

arclab.com.au
 custom-designed homes

ARCLAB PTY LTD
 A.C.N. 143472762
 PO Box 1239 Newport Beach
 NSW 2106 Australia
 Telephone +61 416 886 537
 email: arc@arclab.com.au
 www.arclab.com.au

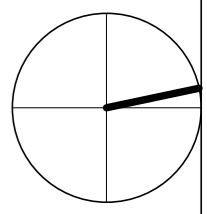
SHEET TITLE
 PROPOSED LEVEL 1

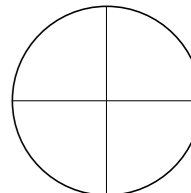
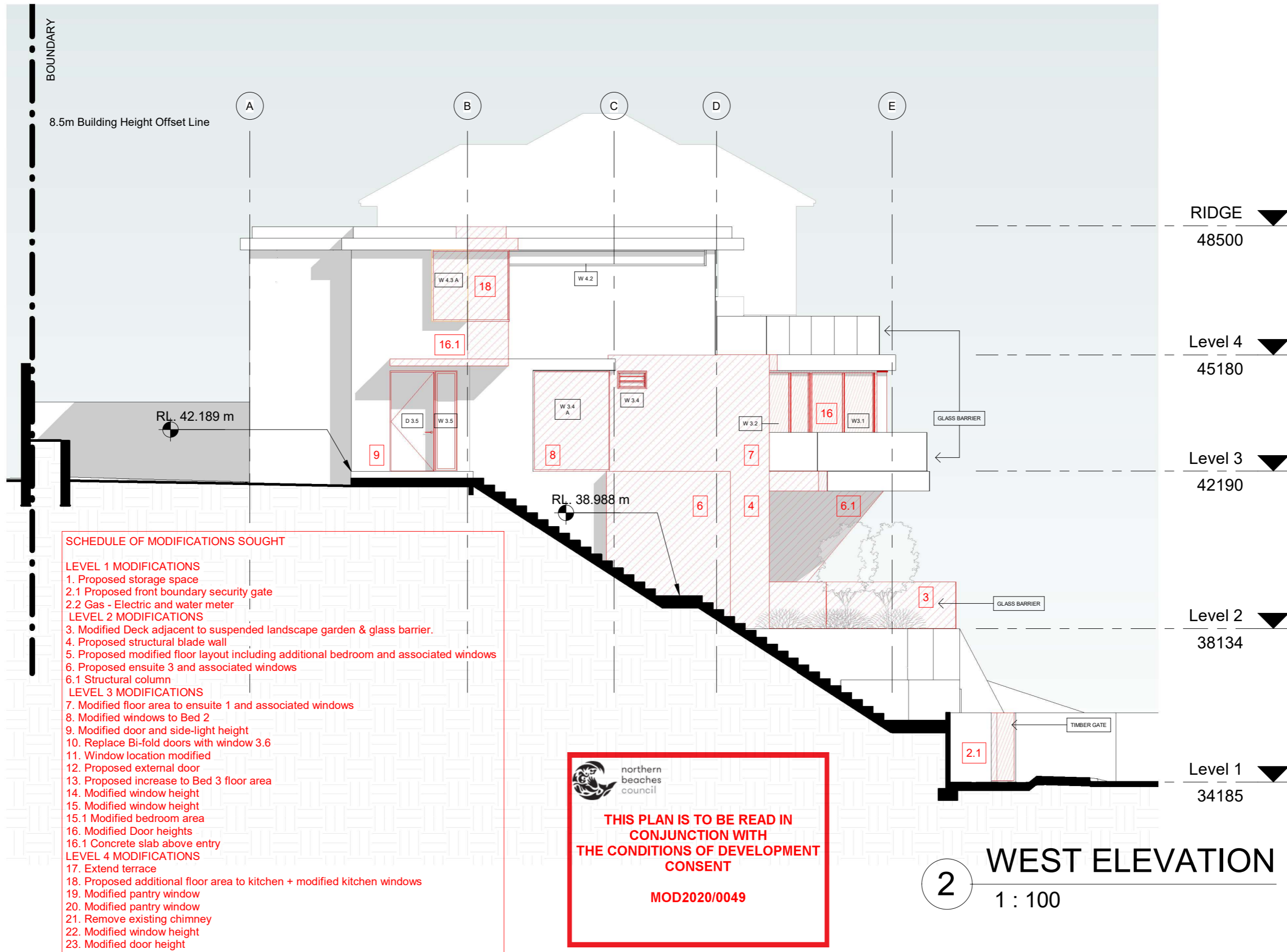
PROJECT ADDRESS
 98 CUTLER ROAD,
 CLONTARF

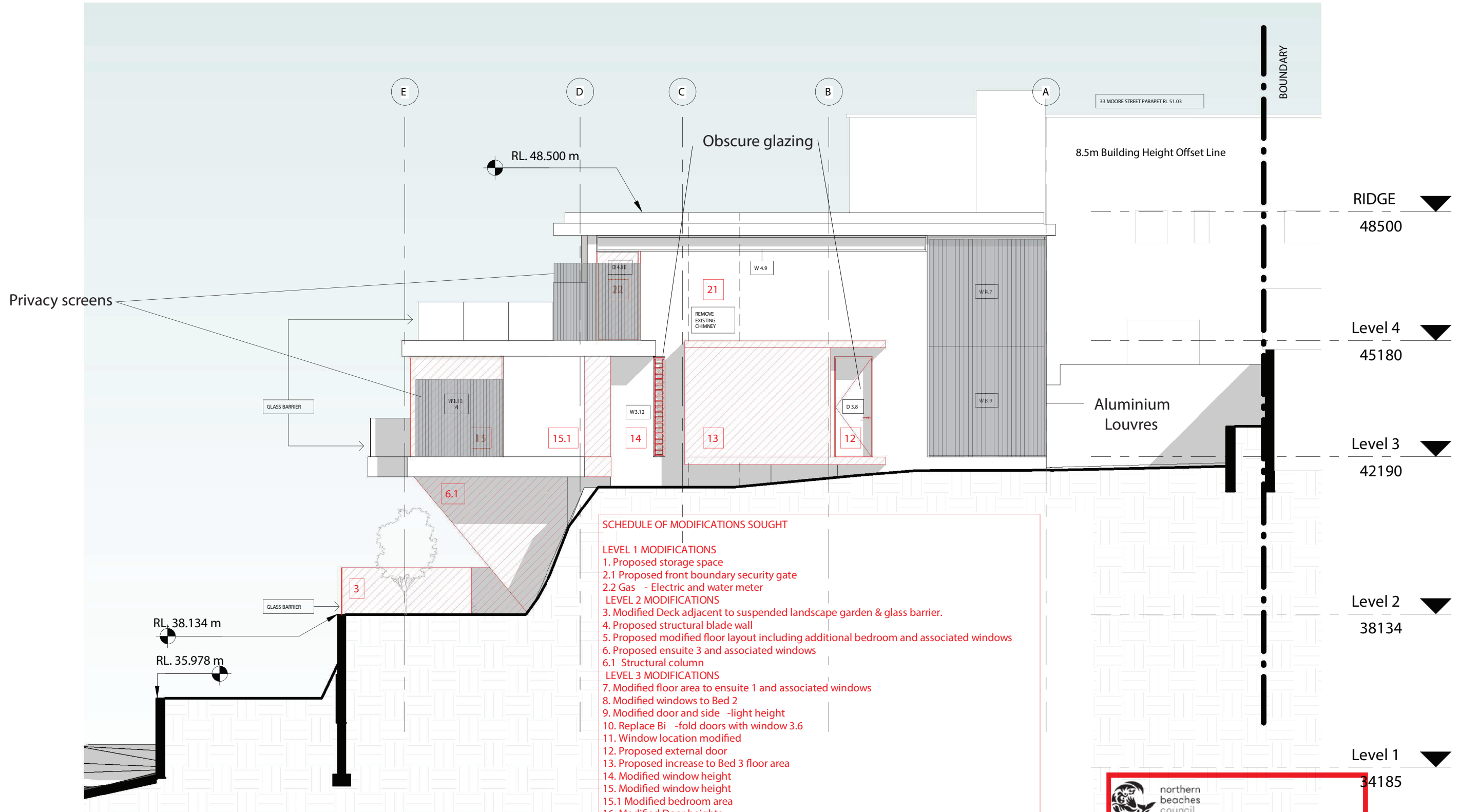
CLIENT
 BOWES HOUSE
 DOCUMENTATION

All works to be in accordance with Australian Standards, The Building Code of Australia, other relevant codes, and with Manufacturers' recommendations and instructions. Do not scale from drawings.
 Verify all dimensions on site prior to construction.
 The drawing is copyright and may not be used without written consent from ARCLAB PTY LTD.

Drawn	Scale	Sheet	Date	Job N°.	Sheet N°	Issue/Revision
Author	1 : 100	A 3	14.8.19	0155-19	06-S4.55	








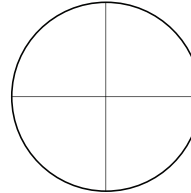
- SCHEDULE OF MODIFICATIONS SOUGHT**
- LEVEL 1 MODIFICATIONS**
- 1. Proposed storage space
 - 2.1 Proposed front boundary security gate
 - 2.2 Gas - Electric and water meter
- LEVEL 2 MODIFICATIONS**
- 3. Modified Deck adjacent to suspended landscape garden & glass barrier.
 - 4. Proposed structural blade wall
 - 5. Proposed modified floor layout including additional bedroom and associated windows
 - 6. Proposed ensuite 3 and associated windows
 - 6.1 Structural column
- LEVEL 3 MODIFICATIONS**
- 7. Modified floor area to ensuite 1 and associated windows
 - 8. Modified windows to Bed 2
 - 9. Modified door and side -light height
 - 10. Replace Bi -fold doors with window 3.6
 - 11. Window location modified
 - 12. Proposed external door
 - 13. Proposed increase to Bed 3 floor area
 - 14. Modified window height
 - 15. Modified window height
 - 15.1 Modified bedroom area
 - 16. Modified Door heights
 - 16.1 Concrete slab above entry
- LEVEL 4 MODIFICATIONS**
- 17. Extend terrace
 - 18. Proposed additional floor area to kitchen + modified kitchen windows
 - 19. Modified pantry window
 - 20. Modified pantry window
 - 21. Remove existing chimney
 - 22. Modified window height
 - 23. Modified door height

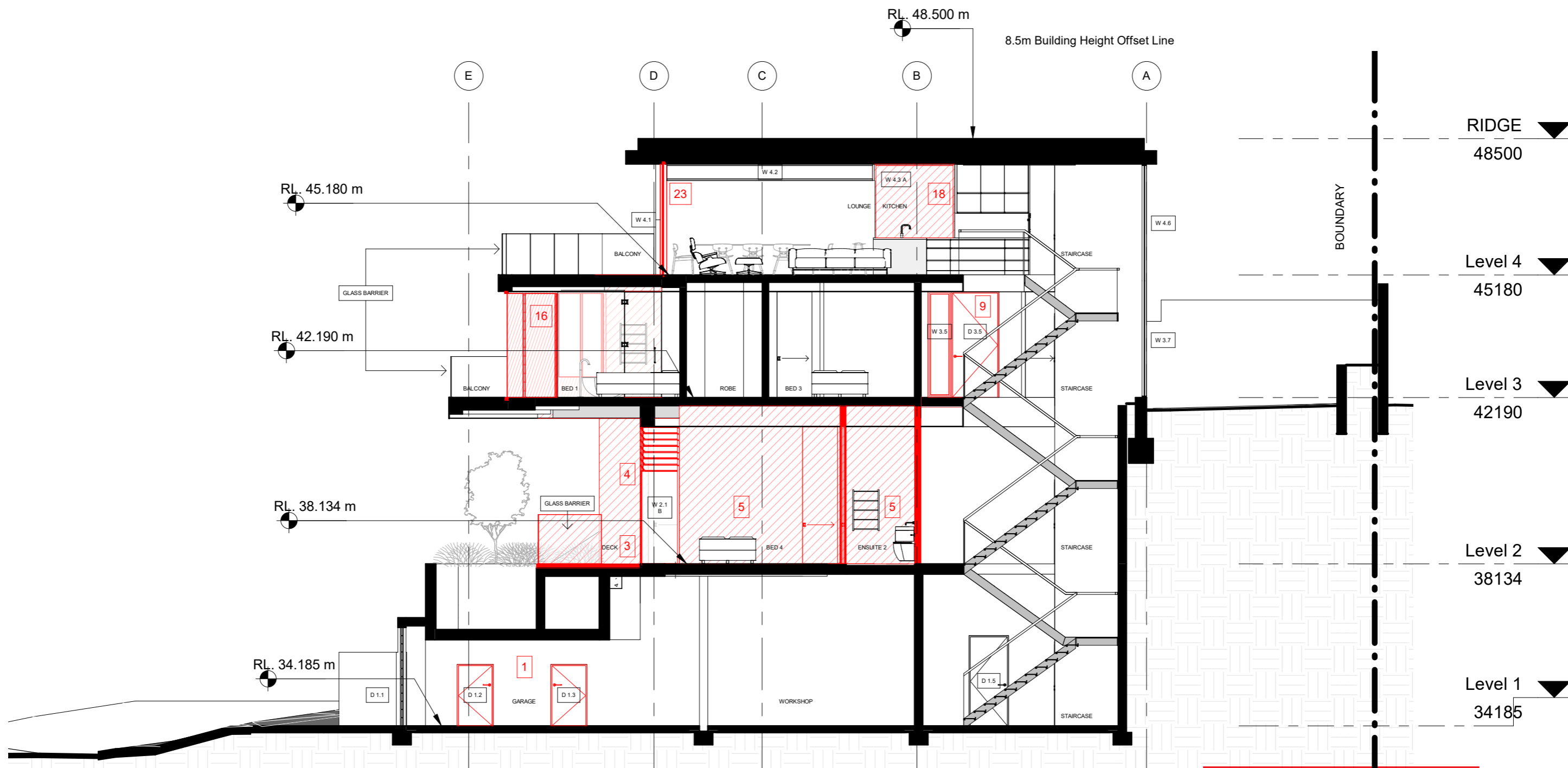
2 EAST ELEVATION
1 : 100

 northern beaches council

THIS PLAN IS TO BE READ IN CONJUNCTION WITH THE CONDITIONS OF DEVELOPMENT CONSENT


MOD2020/0049

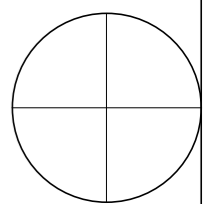


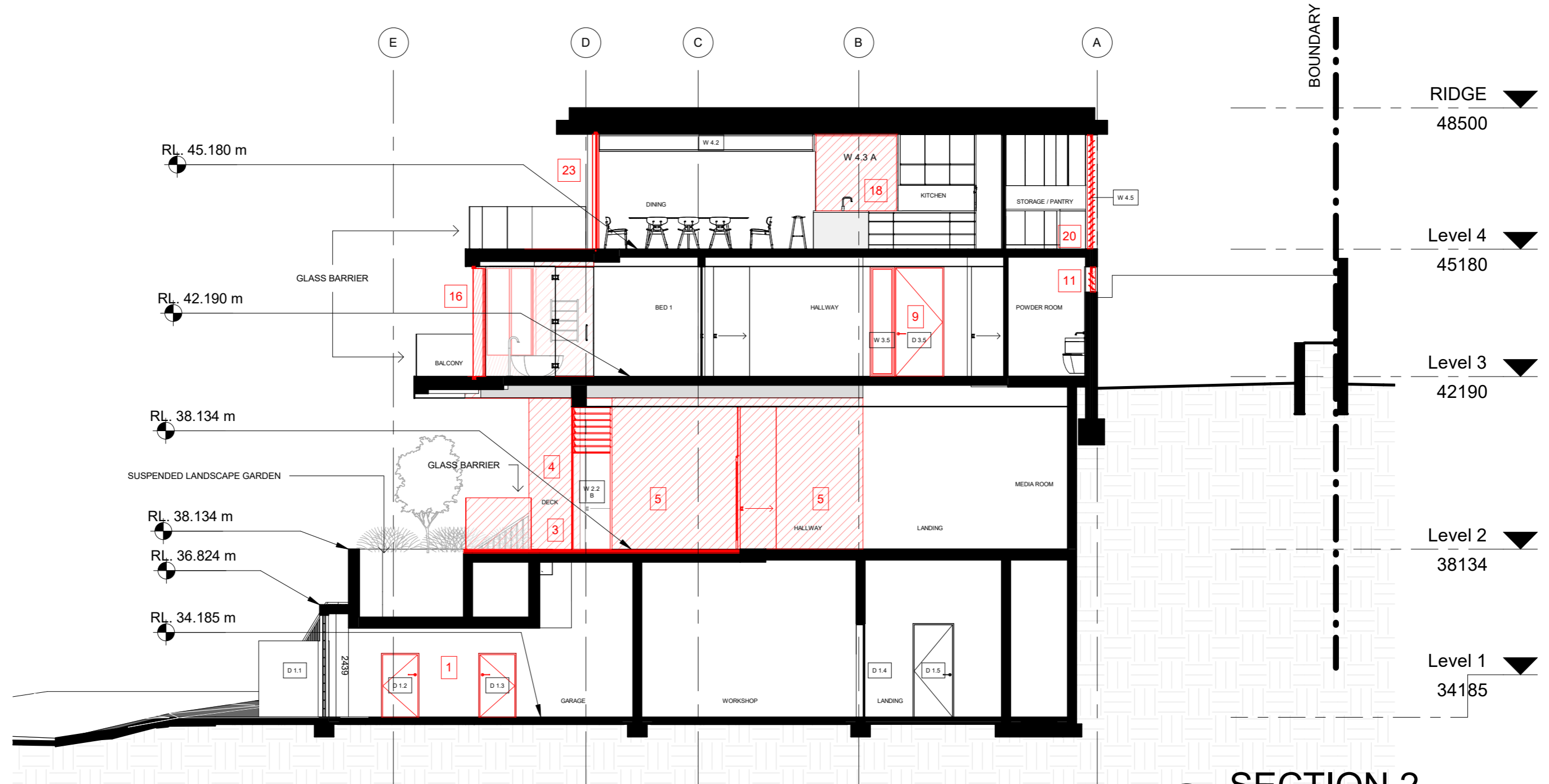


SECTION 1
1 : 100

SCHEDULE OF MODIFICATIONS SOUGHT	LEVEL 3 MODIFICATIONS	LEVEL 4 MODIFICATIONS
<p>LEVEL 1 MODIFICATIONS</p> <ul style="list-style-type: none"> 1. Proposed storage space 2.1 Proposed front boundary security gate 2.2 Gas - Electric and water meter <p>LEVEL 2 MODIFICATIONS</p> <ul style="list-style-type: none"> 3. Modified Deck adjacent to suspended landscape garden & glass barrier. 4. Proposed structural blade wall 5. Proposed modified floor layout including additional bedroom and associated windows 6. Proposed ensuite 3 and associated windows 6.1 Structural column 	<ul style="list-style-type: none"> 7. Modified floor area to ensuite 1 and associated windows 8. Modified windows to Bed 2 9. Modified door and side-light height 10. Replace Bi-fold doors with window 3.6 11. Window location modified 12. Proposed external door 13. Proposed increase to Bed 3 floor area 14. Modified window height 15. Modified window height 15.1 Modified bedroom area 16. Modified Door heights 16.1 Concrete slab above entry 	<ul style="list-style-type: none"> 17. Extend terrace 18. Proposed additional floor area to kitchen - modified kitchen windows 19. Modified pantry window 20. Modified pantry window 21. Remove existing chimney 22. Modified window height 23. Modified door height


THIS PLAN IS TO BE READ IN CONJUNCTION WITH THE CONDITIONS OF DEVELOPMENT CONSENT
MOD2020/0049





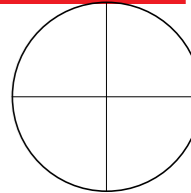
1 SECTION 2
1 : 100

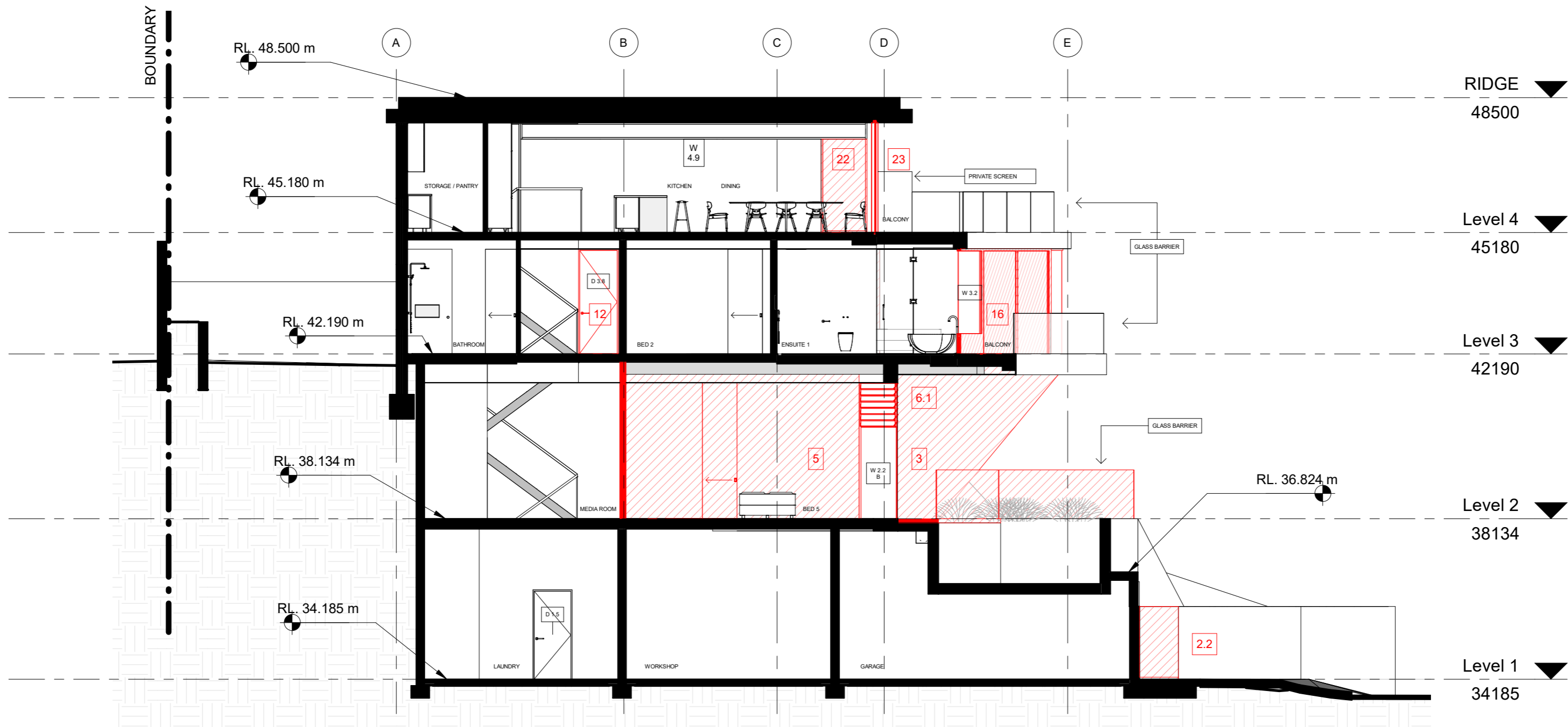
SCHEDULE OF MODIFICATIONS SOUGHT	LEVEL 3 MODIFICATIONS	LEVEL 4 MODIFICATIONS
LEVEL 1 MODIFICATIONS 1. Proposed storage space 2.1 Proposed front boundary security gate 2.2 Gas - Electric and water meter LEVEL 2 MODIFICATIONS 3. Modified Deck adjacent to suspended landscape garden & glass barrier. 4. Proposed structural blade wall 5. Proposed modified floor layout including additional bedroom and associated windows 6. Proposed ensuite 3 and associated windows 6.1 Structural column	7. Modified floor area to ensuite 1 and associated windows 8. Modified windows to Bed 2 9. Modified door and side-light height 10. Replace Bi-fold doors with window 3.6 11. Window location modified 12. Proposed external door 13. Proposed increase to Bed 3 floor area 14. Modified window height 15. Modified window height 15.1 Modified bedroom area 16. Modified Door heights 16.1 Concrete slab above entry	17. Extend terrace 18. Proposed additional floor area to kitchen + modified kitchen windows 19. Modified pantry window 20. Modified pantry window 21. Remove existing chimney 22. Modified window height 23. Modified door height


 northern beaches council

THIS PLAN IS TO BE READ IN CONJUNCTION WITH THE CONDITIONS OF DEVELOPMENT CONSENT

MOD2020/0049





SECTION 3

1

1 : 100
 northern beaches council
THIS PLAN IS TO BE READ IN CONJUNCTION WITH THE CONDITIONS OF DEVELOPMENT CONSENT
 MOD2020/0049

SCHEDULE OF MODIFICATIONS SOUGHT	LEVEL 3 MODIFICATIONS	LEVEL 4 MODIFICATIONS
LEVEL 1 MODIFICATIONS 1. Proposed storage space 2.1 Proposed front boundary security gate 2.2 Gas - Electric and water meter LEVEL 2 MODIFICATIONS 3. Modified Deck adjacent to suspended landscape garden & glass barrier. 4. Proposed structural blade wall 5. Proposed modified floor layout including additional bedroom and associated windows 6. Proposed ensuite 3 and associated windows 6.1 Structural column	7. Modified floor area to ensuite 1 and associated windows 8. Modified windows to Bed 2 9. Modified door and side-light height 10. Replace Bi-fold doors with window 3.6 11. Window location modified 12. Proposed external door 13. Proposed increase to Bed 3 floor area 14. Modified window height 15. Modified window height 15.1 Modified bedroom area 16. Modified Door heights 16.1 Concrete slab above entry	17. Extend terrace 18. Proposed additional floor area to kitchen + modified kitchen windows 19. Modified pantry window 20. Modified pantry window 21. Remove existing chimney 22. Modified window height 23. Modified door height

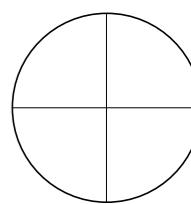
ARCLAB PTY LTD
 A.C.N. 143472762
 PO Box 1239 Newport Beach
 NSW 2106 Australia
 Telephone +61 416 886 537
 email: arc@arclab.com.au
 www.arclab.com.au

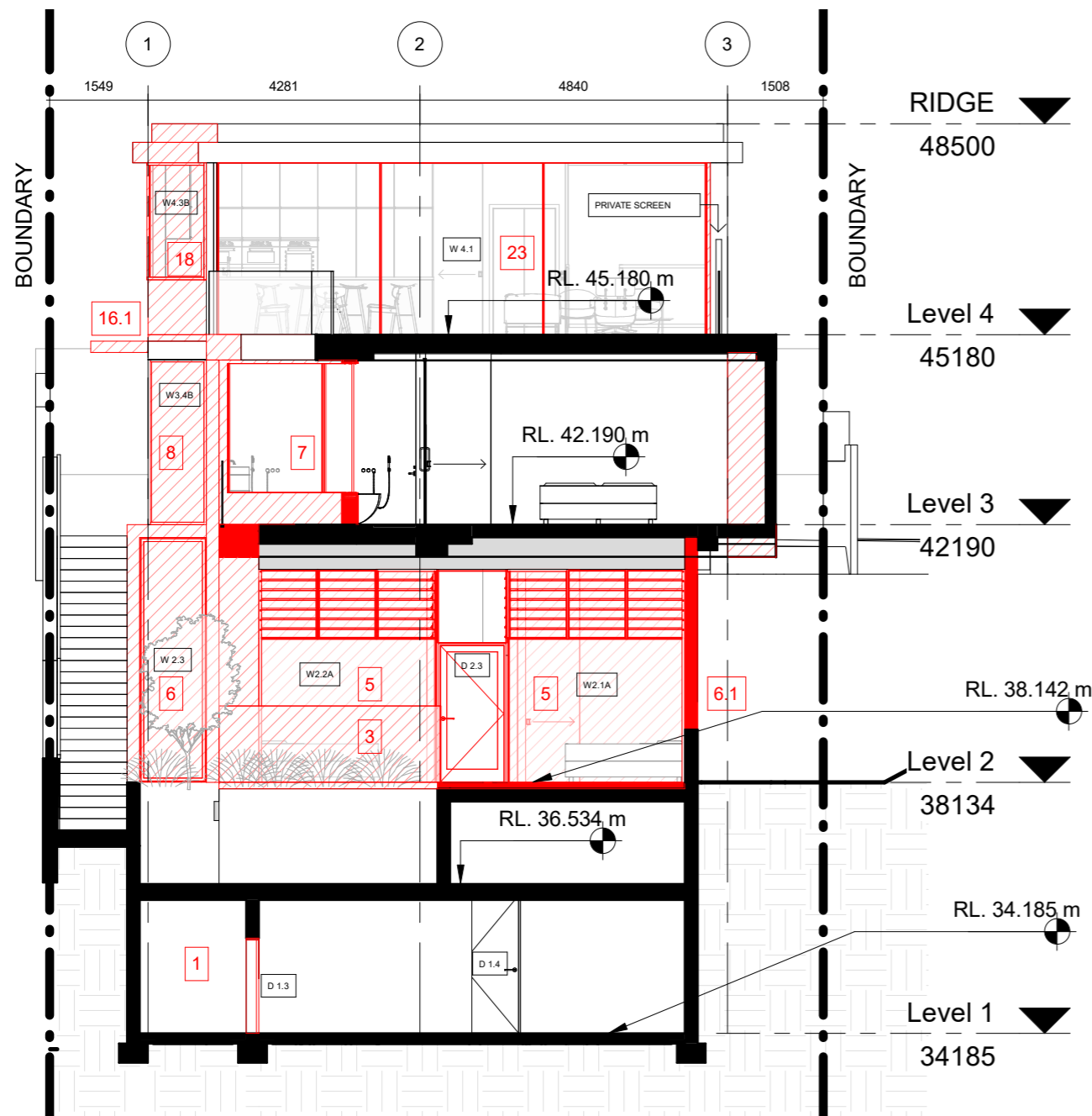
SHEET TITLE
 SECTION 3
PROJECT ADDRESS
 98 CUTLER ROAD,
 CLONTARF

CLIENT
 BOWES HOUSE
DOCUMENTATION
 -

All works to be in accordance with Australian Standards, The Building Code of Australia, other relevant codes, and with Manufacturers' recommendations and instructions. Do not scale from drawings.
 Verify all dimensions on site prior to construction.
 The drawing is copyright and may not be used without written consent from ARCLAB PTY LTD.

Drawn	Scale	Sheet	Date	Job N°.	Sheet N°	Issue/Revision
Author	1 : 100	A 3	14.8.19	0155-19	012-S4.55	



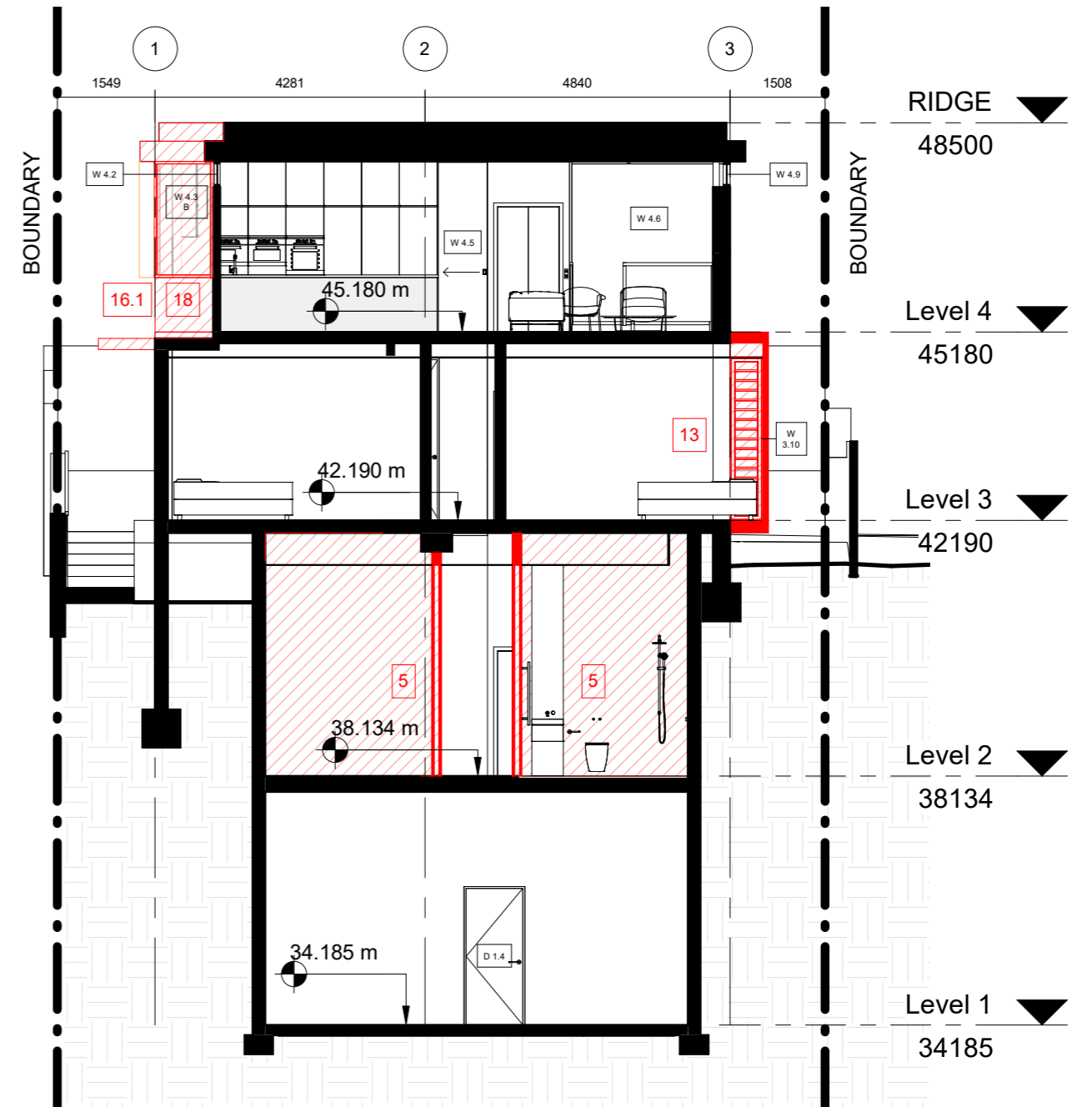


33 Moore Street.
Parapet RL 51.03

CUTLER ROAD N 98

96 Cutler Ridge RL 51.40

1 SECTION 4
1 : 100



33 Moore Street.
Parapet RL 51.03

CUTLER ROAD N 98

96 Cutler Ridge RL 51.40

2 SECTION 5
1 : 100

SCHEDULE OF MODIFICATIONS SOUGHT

LEVEL 1 MODIFICATIONS

- 1. Proposed storage space
- 2.1 Proposed front boundary security gate
- 2.2 Gas - Electric and water meter

LEVEL 2 MODIFICATIONS

- 3. Modified Deck adjacent to suspended landscape garden & glass barrier.
- 4. Proposed structural blade wall
- 5. Proposed modified floor layout including additional bedroom and associated windows
- 6. Proposed ensuite 3 and associated windows
- 6.1 Structural column

LEVEL 3 MODIFICATIONS

- 7. Modified floor area to ensuite 1 and associated windows
- 8. Modified windows to Bed 2
- 9. Modified door and side-light height
- 10. Replace Bi-fold doors with window 3.6
- 11. Window location modified
- 12. Proposed external door
- 13. Proposed increase to Bed 3 floor area
- 14. Modified window height
- 15. Modified window height
- 15.1 Modified bedroom area
- 16. Modified Door heights
- 16.1 Concrete slab above entry

LEVEL 4 MODIFICATIONS

- 17. Extend terrace
- 18. Proposed additional floor area to kitchen + modified kitchen windows
- 19. Modified pantry window
- 20. Modified pantry window
- 21. Remove existing chimney
- 22. Modified window height
- 23. Modified door height



**THIS PLAN IS TO BE READ IN
CONJUNCTION WITH
THE CONDITIONS OF DEVELOPMENT
CONSENT**

MOD2020/0049

