

TP00.00	COVER SHEET	F
TP00.02	DEMOLITION PLAN	C
TP00.03	SITE SURVEY PLAN	C
TP00.04	SITE PLAN	D
TP00.05	SITE ANALYSIS PLAN	B
TP00.07	BULK EXCAVATION DIAGRAM	E
TP01.00	BASEMENT 3	A
TP01.01	BASEMENT 2	F
TP01.02	BASEMENT 1	F
TP01.03	GROUND	E
TP01.04	LEVEL 1	E
TP01.05	LEVEL 2	E
TP01.06	LEVEL 3	D
TP01.07	LEVEL 4	D
TP01.08	LEVEL 5	D
TP01.09	LEVEL 6	D
TP01.10	LEVEL 7	D
TP01.11	LEVEL 8	D
TP02.05	SITE ELEVATIONS	D
TP02.06	SITE ELEVATIONS	D
TP03.01	SECTIONS	F
TP03.02	SECTIONS 2	F
TP05.01	SHADOW ANALYSIS - POV	D
TP05.02	SHADOW ANALYSIS - POV	D
TP06.01	GFA PLANS	D
TP06.03	DEEP SOIL	D
TP06.04	COMMUNAL / LANDSCAPE PLAN	D
TP06.05	SEPR 05 SOLAR & CROSS VENTILATION COMPLIANCE	D
TP06.21	STORAGE SCHEDULE	E
TP06.31	ADAPTABLE PLANS	D
TP06.32	ADAPTABLE PLANS	D
TP06.33	ADAPTABLE PLANS & LHA SCHEDULE	D
TP06.40	COMMERCIAL ADAPTATIONS	B
TP07.01	PERSPECTIVES	C
TP07.02	PERSPECTIVES	C
TP07.03	PERSPECTIVES	C
TP10.01	DEVELOPMENT SUMMARY	E
TP12.01	NOTIFICATION - SITE PLAN	C
TP12.02	NOTIFICATION - ELEVATIONS	C
TP12.03	NOTIFICATION - ELEVATIONS	C



Revisions			
A	14.12.2021	DEVELOPMENT APPLICATION	JC
B	11.11.2022	COUNCIL SUBMISSION	JC
C	07.12.2022	COUNCIL SUBMISSION	JC
D	03.03.2023	COUNCIL SUBMISSION	JC
E	16.01.2024	MODIFICATION ISSUE	JC
F	19.06.2024	MODIFICATION ISSUE	JC

Client / **Dee Why 3 Pty Ltd & Dee Why 4 Pty Ltd**

Project / **4 Delmar Pde & 812 Pittwater Rd, Dee Why**

Drawing / **COVER SHEET**

Project No. / **221054** Date / **19.06.2024** Author / **SJ**

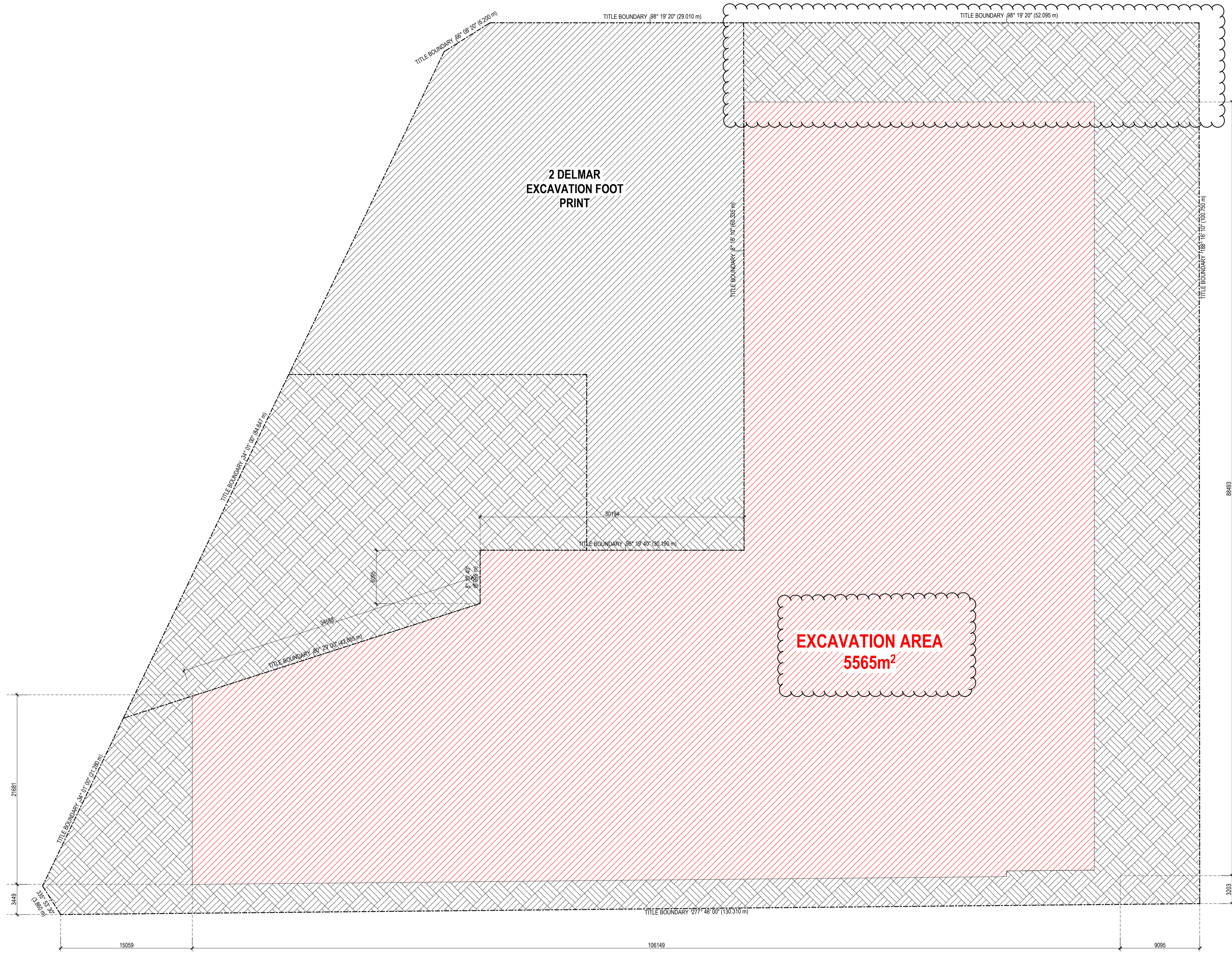
Scale: @ A1 / **1 : 200**

Drawing No. / **TP00.00 E**

rothelowman

Brisbane, Melbourne, Sydney
www.rothelowman.com.au

Disclaimer: Rothe Lowman Property Pty. Ltd. retains all common law, statutory law and other rights including copyright and intellectual property rights in respect of this document. The recipient indemnifies Rothe Lowman Property Pty. Ltd. against all claims resulting from use of this document for any purpose other than its intended use, unauthorized changes or reuse of the document on other projects without the permission of Rothe Lowman Property Pty. Ltd. Under no circumstance shall transfer of this document be deemed a sale or constitute a transfer of the license to use this document. ABN 76 005 783 997



Revisions			
A	14.12.2021	DEVELOPMENT APPLICATION	JC
B	11.11.2022	COUNCIL SUBMISSION	JC
C	07.12.2022	COUNCIL SUBMISSION	JC
D	03.03.2023	COUNCIL SUBMISSION	JC
E	16.01.2024	MODIFICATION ISSUE	JC

Client / **Dee Why 3 Pty Ltd & Dee Why 4 Pty Ltd**

Project / **4 Delmar Pde & 812 Pittwater Rd, Dee Why**

Drawing / **BULK EXCAVATION DIAGRAM**

Project No / **221054**

Date / **16.01.2024**

Author / **SJ**

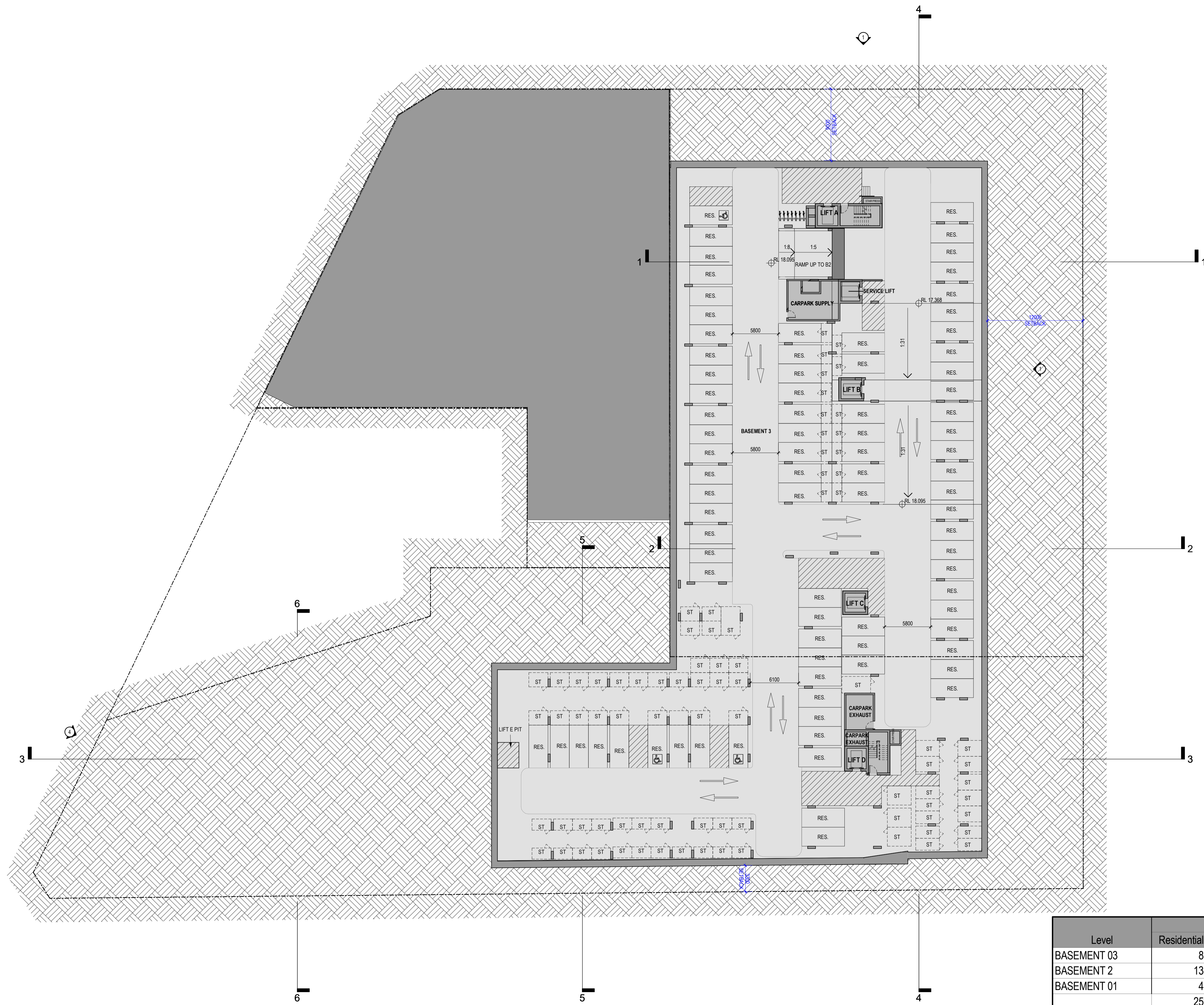
Scale: @ A1 / **1 : 250**

Drawing No. / **TP00.07 E**

rothelowman

Brisbane, Melbourne, Sydney
www.rothelowman.com.au

Disclaimer: Rothelowman Property Pty. Ltd. retains all common law, statutory law and other rights including copyright and intellectual property rights in respect of this document. The recipient indemnifies Rothelowman Property Pty. Ltd. against all claims resulting from use of this document for any purpose other than its intended use, unauthorized changes or reuse of the document on other projects without the permission of Rothelowman Property Pty. Ltd. Under no circumstance shall transfer of this document be deemed a sale or constitute a transfer of the license to use this document. ABN 76 005 783 997



Level	CARPARKS			
	Residential	Visitor	Commercial	Total
BASEMENT 03	83	0	0	83
BASEMENT 2	135	0	0	135
BASEMENT 01	41	47	28	116
	259	47	28	334

Revisions / A 16.01.2024 MODIFICATION ISSUE

JC

Client / **Dee Why 3 Pty Ltd & Dee Why 4 Pty Ltd**

Project / **4 Delmar Pde & 812 Pittwater Rd, Dee Why**

Drawing / **BASEMENT 3**

Project No / **221054**

Date / **16.01.2024**

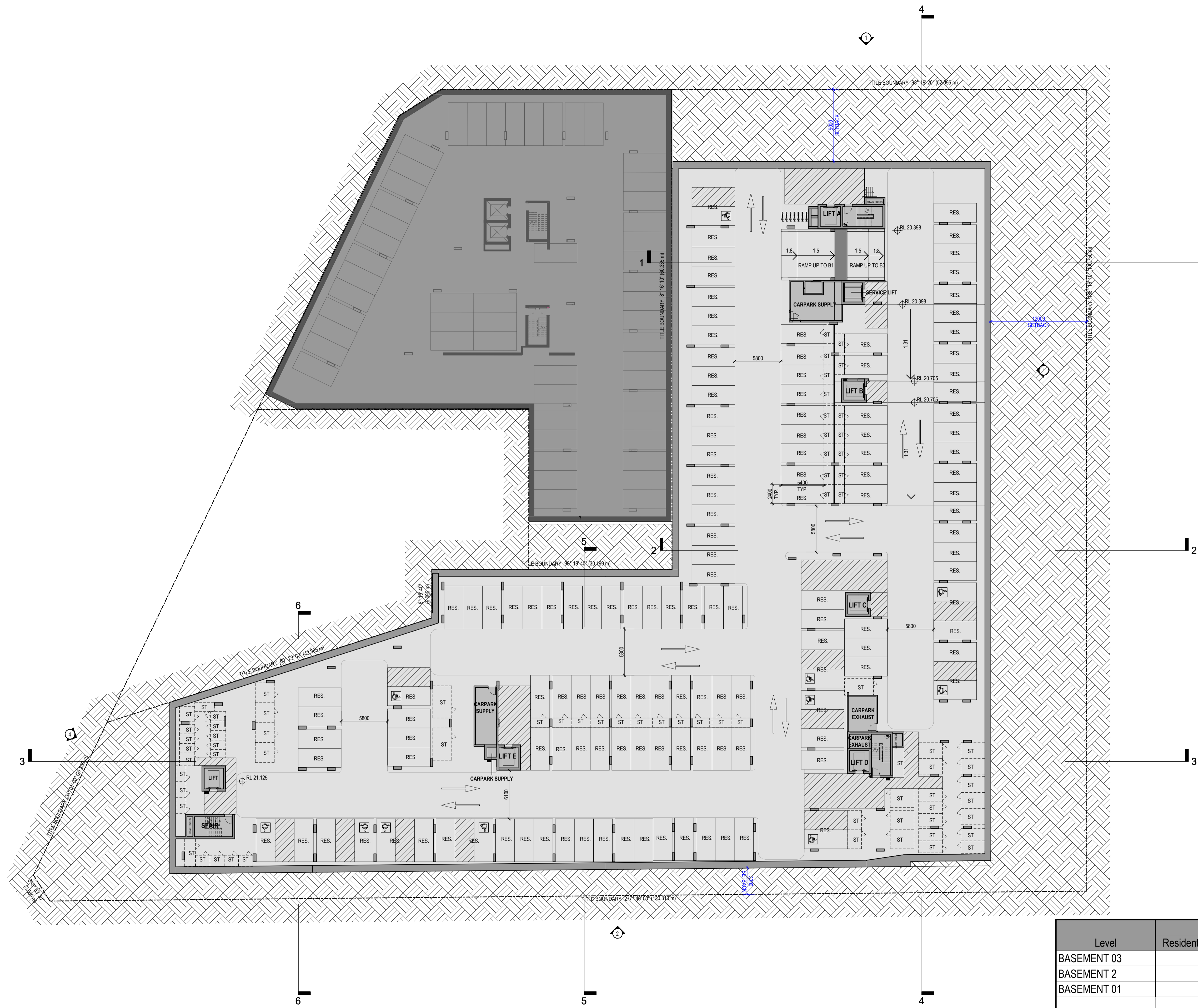
Author / **SV**

Scale: @ A1 / **1 : 250**

Drawing No. / **TP01.00 A**

rothelowman

Brisbane, Melbourne, Sydney
www.rothelowman.com.au



Level	CARPARKS			
	Residential	Visitor	Commercial	Total
BASEMENT 03	83	0	0	83
BASEMENT 2	135	0	0	135
BASEMENT 01	41	47	28	116
	259	47	28	334

Revisions	Date	Description
B	11.11.2022	COUNCIL SUBMISSION
C	07.12.2022	COUNCIL SUBMISSION
D	16.02.2023	COUNCIL UPDATE
E	03.03.2023	COUNCIL SUBMISSION
F	16.01.2024	MODIFICATION ISSUE

JC
JC
JC
JC

Client / **Dee Why 3 Pty Ltd & Dee Why 4 Pty Ltd**
Project / **4 Delmar Pde & 812 Pittwater Rd, Dee Why**

Drawing / **BASEMENT 2**

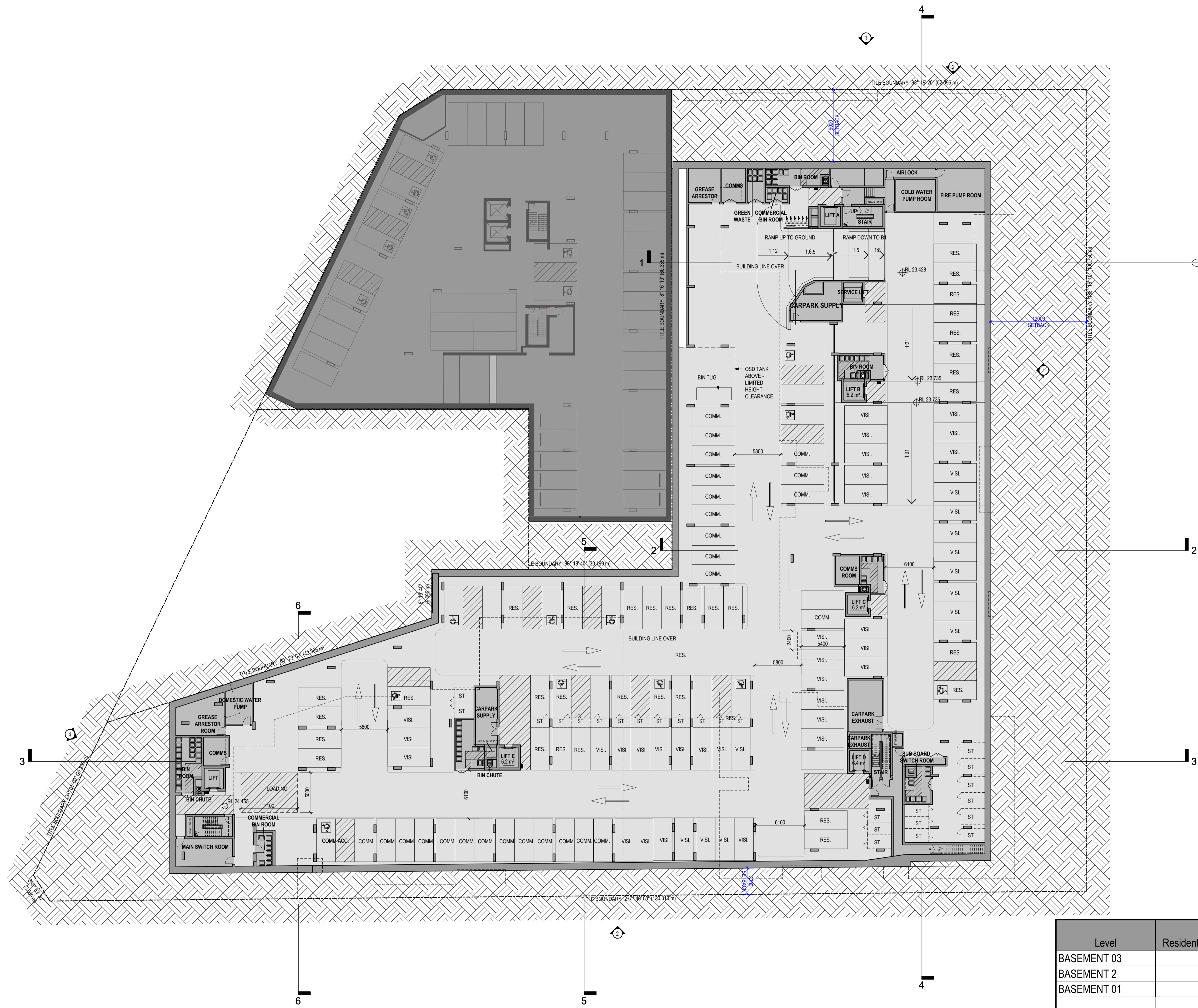
Project No. / **221054** Date / **16.01.2024** Author / **BR** Scale: @ A1 / **1 : 250**

Drawing No. / **TP01.01 F**

rothelowman

Brisbane, Melbourne, Sydney
www.rothelowman.com.au

Disclaimer: Rothel Lowman Property Pty. Ltd. retains all common law, statutory law and other rights including copyright and intellectual property rights in respect of this document. The recipient indemnifies Rothel Lowman Property Pty. Ltd. against all claims resulting from use of this document for any purpose other than its intended use, unauthorized changes or reuse of the document on other projects without the permission of Rothel Lowman Property Pty. Ltd. Under no circumstance shall transfer of this document be deemed a sale or constitute a transfer of the license to use this document. ABN 76 005 783 997



Level	CARPARKS			
	Residential	Visitor	Commercial	Total
BASEMENT 03	83	0	0	83
BASEMENT 2	135	0	0	135
BASEMENT 01	41	47	28	116
	259	47	28	334

Revisions	Date	Description
B	11.11.2022	COUNCIL SUBMISSION
C	07.12.2022	COUNCIL SUBMISSION
D	16.02.2023	COUNCIL UPDATE
E	03.03.2023	COUNCIL SUBMISSION
F	16.01.2024	MODIFICATION ISSUE

JC
JC
JC
JC

Client / **Dee Why 3 Pty Ltd & Dee Why 4 Pty Ltd**
 Project / **4 Delmar Pde & 812 Pittwater Rd, Dee Why**

Drawing / **BASEMENT 1**

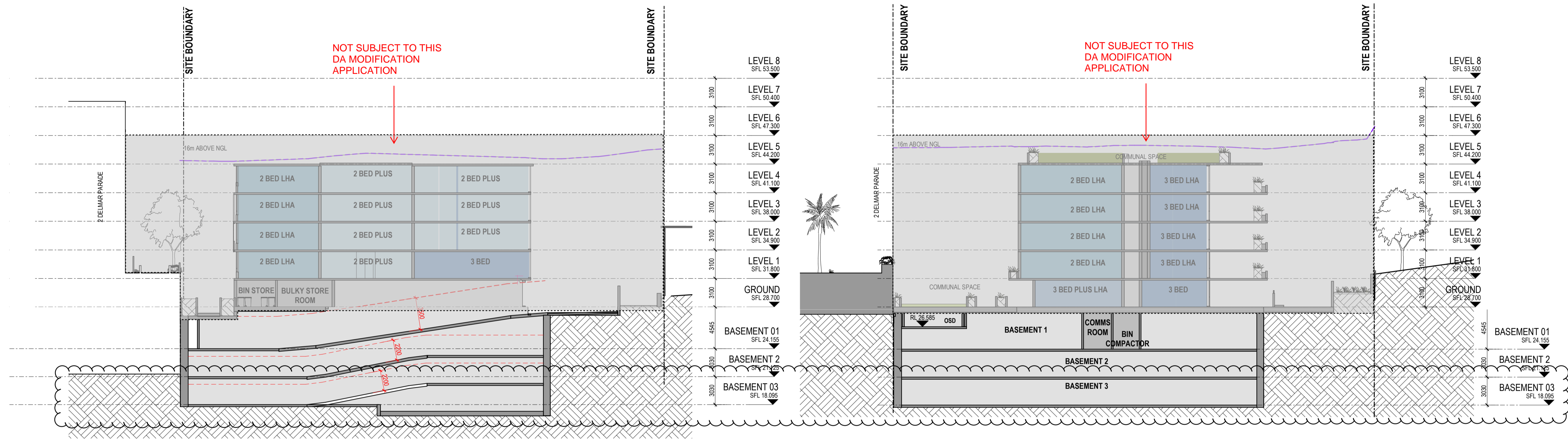
Project No / **221054** Date / **16.01.2024** Author / **BR** Scale: @ A1 / **1 : 250**

Drawing No. / **TP01.02 F**

rothelowman

Brisbane, Melbourne, Sydney
www.rothelowman.com.au

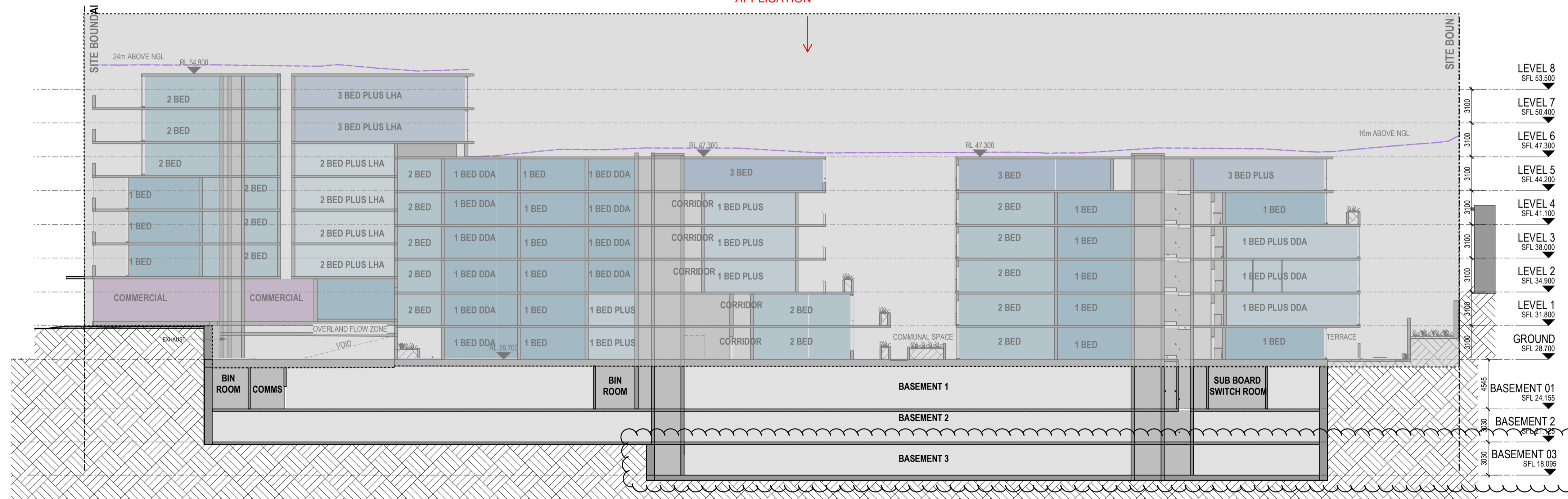
Disclaimer: Rothel Lowman Property Pty. Ltd. retains all common law, statutory law and other rights including copyright and intellectual property rights in respect of this document. The recipient indemnifies Rothel Lowman Property Pty. Ltd. against all claims resulting from use of this document for any purpose other than its intended use, unauthorized changes or reuse of the document on other projects without the permission of Rothel Lowman Property Pty. Ltd. Under no circumstance shall transfer of this document be deemed a sale or constitute a transfer of the license to use this document. ABN 76 005 783 997



SECTION 1 - RAMP

NOT SUBJECT TO THIS DA MODIFICATION APPLICATION

SECTION 2



SECTION 3

Revisions	Date	Description	Author
A	14.12.2021	DEVELOPMENT APPLICATION	JC
B	11.11.2022	COUNCIL SUBMISSION	JC
C	07.12.2022	COUNCIL SUBMISSION	JC
D	03.03.2023	COUNCIL SUBMISSION	JC
E	16.01.2024	MODIFICATION ISSUE	JC
F	19.06.2024	MODIFICATION ISSUE	JC

Client / **Dee Why 3 Pty Ltd & Dee Why 4 Pty Ltd** Project / **4 Delmar Pde & 812 Pittwater Rd, Dee Why**

Drawing / **SECTIONS**

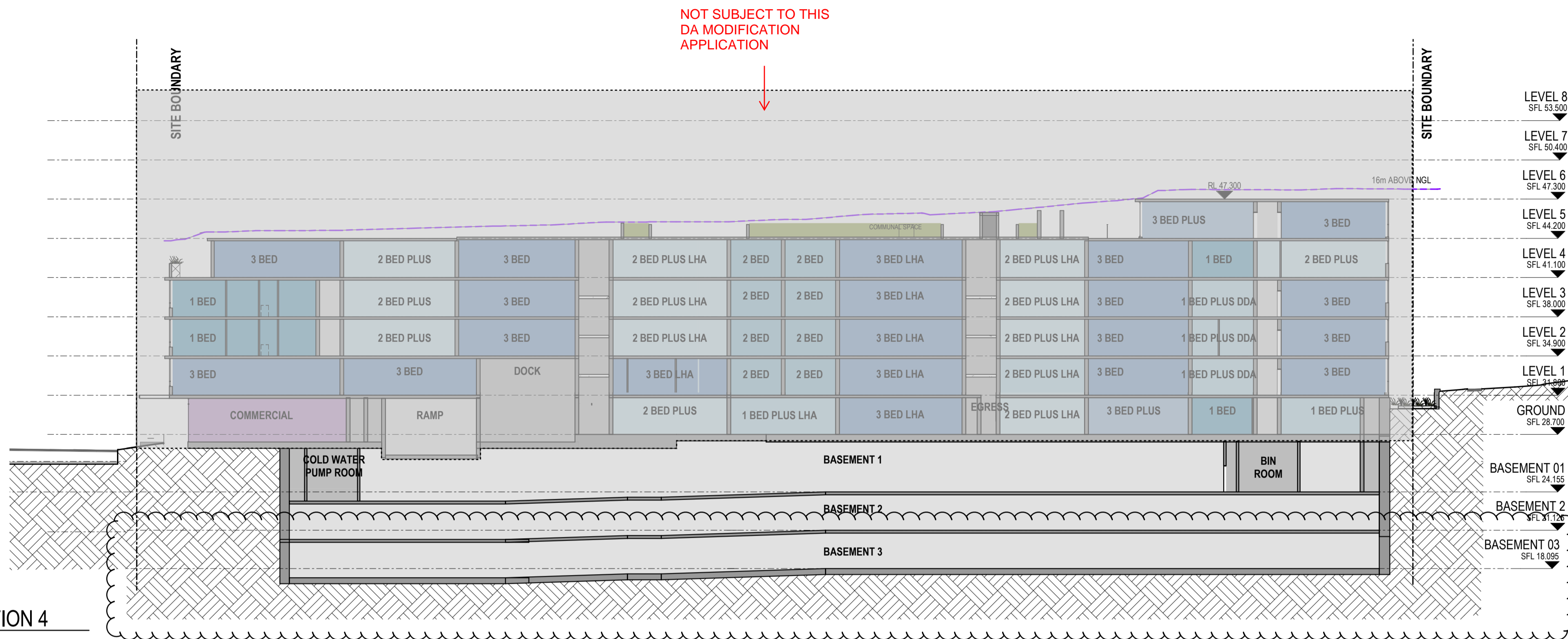
Project No / **221054** Date / **19.06.2024** Author / **BR** Scale: @ A1 / **1 : 250**

Drawing No. / **TP03.01 E**

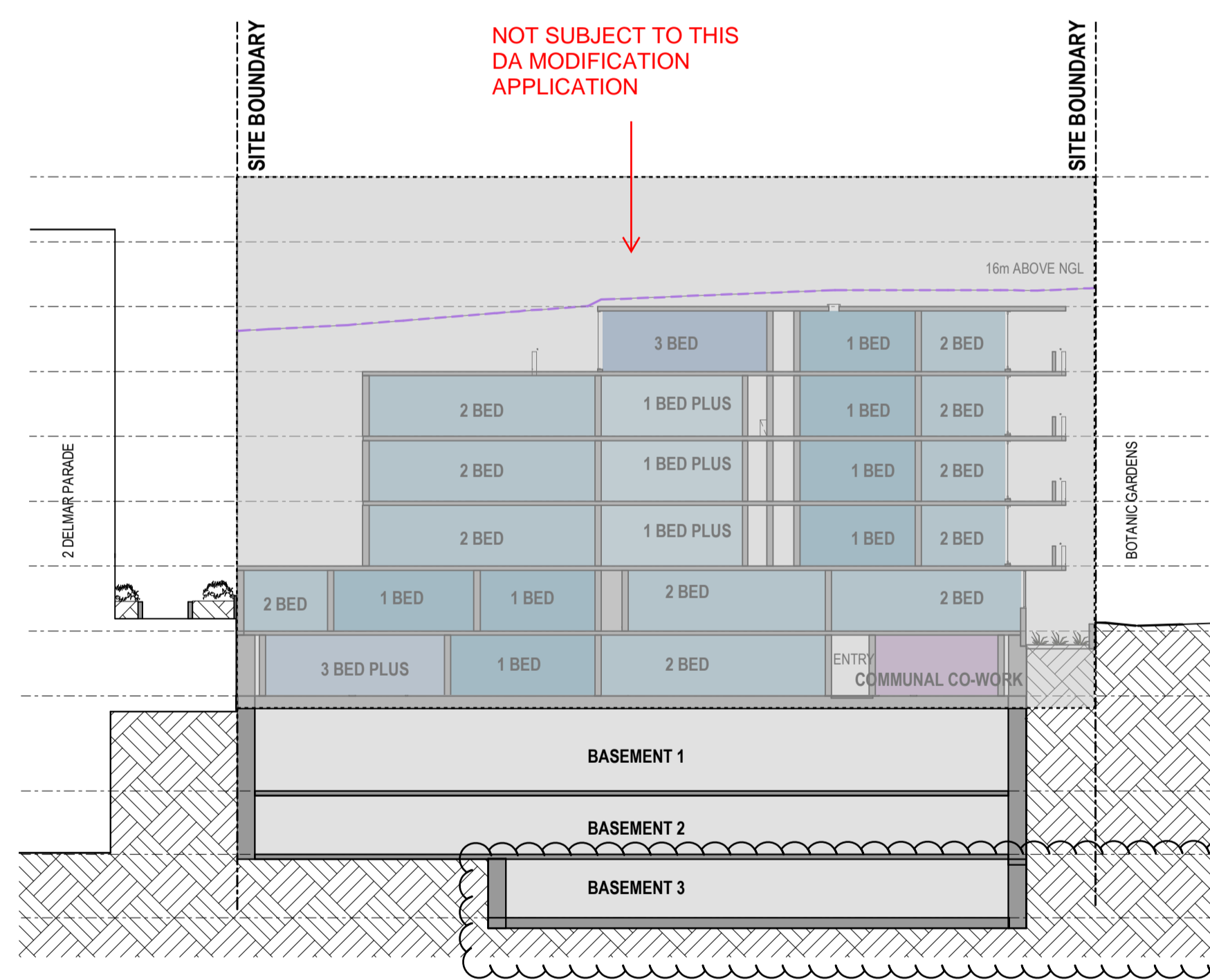
rothelowman

Brisbane, Melbourne, Sydney
www.rothelowman.com.au

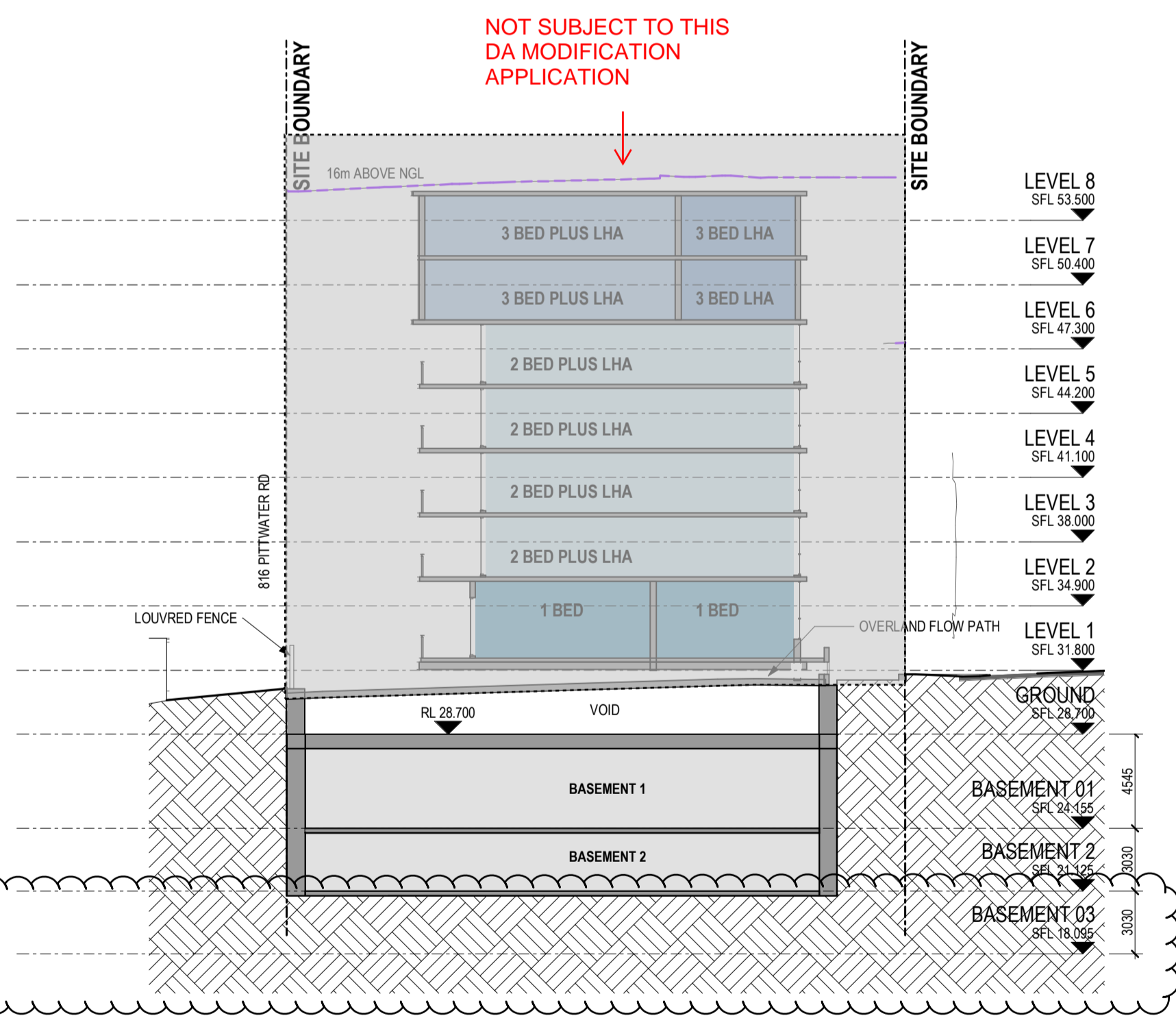
Disclaimer: Rother Lowman Property Pty. Ltd. retains all common law, statutory law and other rights including copyright and intellectual property rights in respect of this document. The recipient indemnifies Rother Lowman Property Pty. Ltd. against all claims resulting from use of this document for any purpose other than its intended use, unauthorized changes or reuse of the document on other projects without the permission of Rother Lowman Property Pty. Ltd. Under no circumstance shall transfer of this document be deemed a sale or constitute a transfer of the license to use this document. ABN 76 005 783 997



SECTION 4



SECTION 5



SECTION 6

Revisions	Date	Description	Author
A	14.12.2021	DEVELOPMENT APPLICATION	JC
B	11.11.2022	COUNCIL SUBMISSION	JC
C	07.12.2022	COUNCIL SUBMISSION	JC
D	03.03.2023	COUNCIL SUBMISSION	JC
E	16.01.2024	MODIFICATION ISSUE	JC
F	19.06.2024	MODIFICATION ISSUE	JC

Client / **Dee Why 3 Pty Ltd & Dee Why 4 Pty Ltd** Project / **4 Delmar Pde & 812 Pittwater Rd, Dee Why**

Drawing / **SECTIONS 2**

Project No / **221054** Date / **19.06.2024** Author / **JC**

Scale: @ A1 / **1 : 250**

Drawing No. / **TP03.02 E**

rothelowman

Brisbane, Melbourne, Sydney
www.rothelowman.com.au

Disclaimer: Rother Lowman Property Pty. Ltd. retains all common law, statutory law and other rights including copyright and intellectual property rights in respect of this document. The recipient indemnifies Rother Lowman Property Pty. Ltd. against all claims resulting from use of this document for any purpose other than its intended use. Unauthorized changes or reuse of the document on other projects without the permission of Rother Lowman Property Pty. Ltd. Under no circumstance shall transfer of this document be deemed a sale or constitute a transfer of the license to use this document. ABN 76 005 783 997

RESIDENTIAL STORAGE WITHIN APARTMENT			
LEVEL	UNIT	UNIT TYPE	VOLUME
GROUND	B.101	1 BED	3 m ³
GROUND	B.102	2 BED PLUS LHA	6 m ³
GROUND	B.103	1 BED PLUS LHA	6 m ³
GROUND	B.104	2 BED	6 m ³
GROUND	C.101	3 BED PLUS LHA	7 m ³
GROUND	C.102	3 BED	9 m ³
GROUND	C.103	2 BED PLUS LHA	13 m ³
GROUND	C.104	1 BED	6 m ³
GROUND	D.101	3 BED PLUS	10 m ³
GROUND	D.102	1 BED	3 m ³
GROUND	D.103	2 BED	5 m ³
GROUND	D.104	1 BED	3 m ³
GROUND	D.105	1 BED PLUS	18 m ³
GROUND	D.106	1 BED	4 m ³
GROUND	E.101	2 BED PLUS	10 m ³
GROUND	E.102	3 BED PLUS	21 m ³
GROUND	E.103	1 BED	3 m ³
GROUND	E.104	2 BED	4 m ³
GROUND	E.105	1 BED DDA	4 m ³
GROUND	E.106	1 BED	3 m ³
GROUND	E.107	1 BED PLUS	6 m ³
LEVEL 1	A.201	1 BED	3 m ³
LEVEL 1	A.202	1 BED	6 m ³
LEVEL 1	A.203	3 BED	6 m ³
LEVEL 1	A.204	2 BED LHA	4 m ³
LEVEL 1	A.205	1 BED	4 m ³
LEVEL 1	A.206	1 BED	3 m ³
LEVEL 1	B.201	1 BED DDA	4 m ³
LEVEL 1	B.202	2 BED PLUS	10 m ³
LEVEL 1	B.203	3 BED	10 m ³
LEVEL 1	B.204	3 BED LHA	8 m ³
LEVEL 1	B.205	2 BED	5 m ³
LEVEL 1	B.206	1 BED LHA	4 m ³
LEVEL 1	C.201	2 BED LHA	4 m ³
LEVEL 1	C.202	2 BED	4 m ³
LEVEL 1	C.203	3 BED LHA	10 m ³
LEVEL 1	C.204	2 BED PLUS LHA	13 m ³
LEVEL 1	C.205	1 BED	6 m ³
LEVEL 1	D.201	3 BED	10 m ³
LEVEL 1	D.202	1 BED PLUS DDA	9 m ³
LEVEL 1	D.203	3 BED	13 m ³
LEVEL 1	D.204	1 BED LHA	3 m ³
LEVEL 1	D.205	1 BED LHA	3 m ³
LEVEL 1	D.206	1 BED PLUS	8 m ³
LEVEL 1	D.207	2 BED	5 m ³
LEVEL 1	D.208	1 BED	3 m ³
LEVEL 1	E.201	2 BED	7 m ³
LEVEL 1	E.202	2 BED	5 m ³
LEVEL 1	E.203	1 BED	8 m ³
LEVEL 1	E.204	1 BED	4 m ³
LEVEL 1	E.205	2 BED	4 m ³
LEVEL 1	E.206	2 BED	7 m ³
LEVEL 1	E.207	1 BED PLUS LHA	11 m ³
LEVEL 1	E.208	2 BED	5 m ³
LEVEL 1	E.209	2 BED	4 m ³
LEVEL 1	E.210	1 BED DDA	4 m ³
LEVEL 1	E.211	1 BED	3 m ³
LEVEL 1	E.212	1 BED PLUS	6 m ³
LEVEL 1 UPPER	F.201	1 BED	3 m ³
LEVEL 1 UPPER	F.202	1 BED	7 m ³
LEVEL 2	A.301	1 BED	3 m ³
LEVEL 2	A.302	1 BED	6 m ³
LEVEL 2	A.303	1 BED	6 m ³
LEVEL 2	A.304	2 BED	4 m ³
LEVEL 2	A.305	2 BED PLUS	10 m ³
LEVEL 2	A.306	2 BED LHA	4 m ³
LEVEL 2	A.307	1 BED	6 m ³
LEVEL 2	A.308	1 BED	3 m ³
LEVEL 2	B.301	1 BED DDA	4 m ³
LEVEL 2	B.302	2 BED PLUS	10 m ³
LEVEL 2	B.303	3 BED	10 m ³
LEVEL 2	B.304	2 BED PLUS LHA	8 m ³
LEVEL 2	B.305	2 BED	5 m ³
LEVEL 2	B.306	1 BED LHA	4 m ³
LEVEL 2	C.301	2 BED LHA	4 m ³
LEVEL 2	C.302	3 BED	4 m ³
LEVEL 2	C.303	3 BED LHA	10 m ³
LEVEL 2	C.304	2 BED PLUS LHA	13 m ³
LEVEL 2	C.305	1 BED	6 m ³
LEVEL 2	D.301	3 BED	10 m ³
LEVEL 2	D.302	1 BED PLUS DDA	9 m ³
LEVEL 2	D.303	3 BED	13 m ³

RESIDENTIAL STORAGE WITHIN APARTMENT			
LEVEL	UNIT	UNIT TYPE	VOLUME
LEVEL 2	D.304	1 BED DDA	3 m ³
LEVEL 2	D.305	1 BED DDA	3 m ³
LEVEL 2	D.306	2 BED	7 m ³
LEVEL 2	D.307	2 BED	5 m ³
LEVEL 2	D.308	1 BED	3 m ³
LEVEL 2	E.301	1 BED DDA	3 m ³
LEVEL 2	E.302	2 BED LHA	4 m ³
LEVEL 2	E.303	2 BED	5 m ³
LEVEL 2	E.304	1 BED PLUS	8 m ³
LEVEL 2	E.305	1 BED	3 m ³
LEVEL 2	E.306	2 BED	6 m ³
LEVEL 2	E.307	2 BED LHA	4 m ³
LEVEL 2	E.308	2 BED	4 m ³
LEVEL 2	E.309	2 BED	5 m ³
LEVEL 2	E.310	1 BED DDA	4 m ³
LEVEL 2	E.311	1 BED	3 m ³
LEVEL 2 UPPER	F.302	3 BED LHA	6 m ³
LEVEL 2 UPPER	F.303	1 BED	3 m ³
LEVEL 2 UPPER	F.304	1 BED	5 m ³
LEVEL 2 UPPER	F.306	2 BED	7 m ³
LEVEL 2 UPPER	F.307	2 BED PLUS LHA	6 m ³
LEVEL 2 UPPER	F.308	3 BED LHA	5 m ³
LEVEL 3	A.401	1 BED	3 m ³
LEVEL 3	A.402	1 BED	6 m ³
LEVEL 3	A.403	1 BED	6 m ³
LEVEL 3	A.404	2 BED	4 m ³
LEVEL 3	A.405	2 BED PLUS	10 m ³
LEVEL 3	A.406	2 BED LHA	4 m ³
LEVEL 3	A.407	1 BED	6 m ³
LEVEL 3	A.408	1 BED	3 m ³
LEVEL 3	B.401	1 BED DDA	4 m ³
LEVEL 3	B.402	2 BED PLUS	10 m ³
LEVEL 3	B.403	3 BED	10 m ³
LEVEL 3	B.404	2 BED PLUS LHA	8 m ³
LEVEL 3	B.405	2 BED	5 m ³
LEVEL 3	B.406	1 BED LHA	4 m ³
LEVEL 3	C.401	2 BED LHA	4 m ³
LEVEL 3	C.402	2 BED	4 m ³
LEVEL 3	C.403	3 BED LHA	10 m ³
LEVEL 3	C.404	2 BED PLUS LHA	13 m ³
LEVEL 3	C.405	1 BED	6 m ³
LEVEL 3	D.401	3 BED	10 m ³
LEVEL 3	D.402	1 BED PLUS DDA	9 m ³
LEVEL 3	D.403	3 BED	13 m ³
LEVEL 3	D.404	1 BED DDA	3 m ³
LEVEL 3	D.405	1 BED DDA	3 m ³
LEVEL 3	D.406	2 BED	7 m ³
LEVEL 3	D.407	2 BED	5 m ³
LEVEL 3	D.408	1 BED	3 m ³
LEVEL 3	E.401	1 BED DDA	3 m ³
LEVEL 3	E.402	2 BED LHA	4 m ³
LEVEL 3	E.403	2 BED	5 m ³
LEVEL 3	E.404	1 BED PLUS	8 m ³
LEVEL 3	E.405	1 BED	3 m ³
LEVEL 3	E.406	2 BED	6 m ³
LEVEL 3	E.407	2 BED LHA	4 m ³
LEVEL 3	E.408	2 BED	4 m ³
LEVEL 3	E.409	2 BED	5 m ³
LEVEL 3	E.410	1 BED DDA	4 m ³
LEVEL 3	E.411	1 BED	3 m ³
LEVEL 3 UPPER	F.402	3 BED LHA	6 m ³
LEVEL 3 UPPER	F.403	1 BED	3 m ³
LEVEL 3 UPPER	F.404	1 BED	5 m ³
LEVEL 3 UPPER	F.406	2 BED	7 m ³
LEVEL 3 UPPER	F.407	2 BED PLUS LHA	6 m ³
LEVEL 3 UPPER	F.408	3 BED LHA	5 m ³
LEVEL 4	A.501	1 BED	5 m ³
LEVEL 4	A.502	3 BED	6 m ³
LEVEL 4	A.503	2 BED PLUS	10 m ³
LEVEL 4	A.504	2 BED LHA	4 m ³
LEVEL 4	A.505	1 BED PLUS	3 m ³
LEVEL 4	A.506	2 BED	7 m ³
LEVEL 4	B.501	1 BED DDA	4 m ³
LEVEL 4	B.502	2 BED PLUS	10 m ³
LEVEL 4	B.503	3 BED	10 m ³
LEVEL 4	B.504	2 BED PLUS LHA	8 m ³
LEVEL 4	B.505	2 BED	5 m ³
LEVEL 4	B.506	1 BED LHA	4 m ³
LEVEL 4	C.501	2 BED LHA	4 m ³
LEVEL 4	C.502	2 BED	4 m ³
LEVEL 4	C.503	3 BED LHA	10 m ³
LEVEL 4	C.504	1 BED	6 m ³

RESIDENTIAL STORAGE WITHIN APARTMENT			
LEVEL	UNIT	UNIT TYPE	VOLUME
LEVEL 4	C.505	2 BED PLUS LHA	13 m ³
LEVEL 4	D.501	3 BED	10 m ³
LEVEL 4	D.502	1 BED	5 m ³
LEVEL 4	D.503	2 BED PLUS	14 m ³
LEVEL 4	D.504	1 BED DDA	3 m ³
LEVEL 4	D.505	1 BED DDA	3 m ³
LEVEL 4	D.506	2 BED	7 m ³
LEVEL 4	D.507	2 BED	5 m ³
LEVEL 4	D.508	1 BED	3 m ³
LEVEL 4	E.501	1 BED DDA	3 m ³
LEVEL 4	E.502	2 BED LHA	4 m ³
LEVEL 4	E.503	2 BED	5 m ³
LEVEL 4	E.504	1 BED PLUS	8 m ³
LEVEL 4	E.505	1 BED	3 m ³
LEVEL 4	E.506	2 BED	6 m ³
LEVEL 4	E.507	2 BED LHA	4 m ³
LEVEL 4	E.508	2 BED	4 m ³
LEVEL 4	E.509	2 BED	5 m ³
LEVEL 4	E.510	1 BED DDA	4 m ³
LEVEL 4	E.511	1 BED	3 m ³
LEVEL 4 UPPER	F.502	3 BED LHA	6 m ³
LEVEL 4 UPPER	F.503	1 BED	3 m ³
LEVEL 4 UPPER	F.504	1 BED	5 m ³
LEVEL 4 UPPER	F.506	2 BED	7 m ³
LEVEL 4 UPPER	F.507	2 BED PLUS LHA	6 m ³
LEVEL 4 UPPER	F.508	3 BED LHA	5 m ³
LEVEL 5	D.601	3 BED PLUS	10 m ³
LEVEL 5	D.602	3 BED	14 m ³
LEVEL 5	D.603	2 BED	4 m ³
LEVEL 5	D.604	2 BED	7 m ³
LEVEL 5	D.605	3 BED	7 m ³
LEVEL 5	E.601	3 BED	5 m ³
LEVEL 5	E.602	1 BED	3 m ³
LEVEL 5	E.603	2 BED	6 m ³
LEVEL 5	E.604	2 BED LHA	4 m ³
LEVEL 5	E.605	2 BED	4 m ³
LEVEL 5	E.606	2 BED	5 m ³
LEVEL 5	E.607	1 BED DDA	4 m ³
LEVEL 5	E.608	1 BED	3 m ³
LEVEL 5	E.609	1 BED DDA	3 m ³
LEVEL 5 UPPER	F.601	3 BED LHA	6 m ³
LEVEL 5 UPPER	F.602	1 BED	3 m ³
LEVEL 5 UPPER	F.603	2 BED	16 m ³
LEVEL 5 UPPER	F.605	2 BED PLUS LHA	6 m ³
LEVEL 5 UPPER	F.606	2 BED PLUS LHA	13 m ³
LEVEL 6 UPPER	F.701	3 BED LHA	6 m ³
LEVEL 6 UPPER	F.702	1 BED	3 m ³
LEVEL 6 UPPER	F.703	2 BED	16 m ³
LEVEL 6 UPPER	F.705	3 BED PLUS LHA	14 m ³
LEVEL 6 UPPER	F.706	3 BED LHA	13 m ³
LEVEL 7 UPPER	F.801	3 BED LHA	6 m ³
LEVEL 7 UPPER	F.802	1 BED	3 m ³
LEVEL 7 UPPER	F.803	2 BED	16 m ³
LEVEL 7 UPPER	F.805	3 BED PLUS LHA	14 m ³
LEVEL 7 UPPER	F.806	3 BED LHA	13 m ³

RESIDENTIAL STORAGE IN BASEMENTS + GROUND CAR PARKS & STORAGE AREA	
VOLUME	NO. OF STORAGE CAGES
BLD A	122
BLD B	97
TOTAL STORAGE: 219	

ALL BASEMENT STORAGE CAGES MINIMUM 5m³ TO MEET MINIMUM ADG REQUIREMENTS

ADG REQUIREMENTS

UNIT TYPE	STORAGE SIZE VOLUME
1 BEDROOM UNIT	6m ³
2 BEDROOM UNIT	8m ³
3 BEDROOM UNIT	10m ³

At least 50% of the required storage is to be located in the apartment

Revisions	Date	Description	Author
A	14.12.2021	DEVELOPMENT APPLICATION	JC
B	11.11.2022	COUNCIL SUBMISSION	JC
C	07.12.2022	COUNCIL SUBMISSION	JC
D	03.03.2023	COUNCIL SUBMISSION	JC
E	16.01.2024	MODIFICATION ISSUE	JC

Client / **Dee Why 3 Pty Ltd & Dee Why 4 Pty Ltd** Project / **4 Delmar Pde & 812 Pittwater Rd, Dee Why**

Drawing / **STORAGE SCHEDULE** Project No. / **221054** Date / **16.01.2024** Author / **JC**

Scale: @ A1

Drawing No. / **TP06.21 E**

rothelowman

Brisbane, Melbourne, Sydney
www.rothelowman.com.au

Disclaimer: Rothe Lowman Property Pty. Ltd. retains all common law, statutory law and other rights including copyright and intellectual property rights in respect of this document. The recipient indemnifies Rothe Lowman Property Pty. Ltd. against all claims resulting from use of this document for any purpose other than its intended use, authorized changes or reuse of the document on other projects without the permission of Rothe Lowman Property Pty. Ltd. Under no circumstance shall transfer of this document be deemed a sale or constitute a transfer of the license to use this document. ABN 76 005 783 997

BUILDING A - DELMAR PDE

LEVEL	RESIDENTIAL	RESIDENTIAL AMENITIES	PARKING	COMMERCIAL	CIRCULATION/SERVICES	TERRACE	APARTMENTS						TOTAL UNITS
							No. 1 BEDS	No. 1 BEDS PLUS	No. 2 BEDS	No. 2 BEDS PLUS	No. 3 BEDS	No. 3 BEDS PLUS	
BASEMENT 03	0.0 m ²	0.0 m ²	3735.1 m ²	0.0 m ²	87.0 m ²	0.0 m ²	0	0	0	0	0	0	0
BASEMENT 2	0.0 m ²	0.0 m ²	5045.5 m ²	0.0 m ²	105.3 m ²	0.0 m ²	0	0	0	0	0	0	0
BASEMENT 01	0.0 m ²	0.0 m ²	4580.6 m ²	0.0 m ²	321.3 m ²	0.0 m ²	0	0	0	0	0	0	0
GROUND	1016.1 m ²	89.8 m ²	139.2 m ²	388.7 m ²	489.9 m ²	357.8 m ²	4	2	2	2	1	2	13
LEVEL 1	1906.0 m ²	0.0 m ²	0.0 m ²	0.0 m ²	227.2 m ²	289.5 m ²	10	3	5	1	6	0	25
LEVEL 2	2030.5 m ²	0.0 m ²	0.0 m ²	0.0 m ²	232.8 m ²	297.4 m ²	11	1	7	4	4	0	27
LEVEL 3	2030.5 m ²	0.0 m ²	0.0 m ²	0.0 m ²	230.8 m ²	297.4 m ²	11	1	7	4	4	0	27
LEVEL 4	1930.6 m ²	0.0 m ²	0.0 m ²	0.0 m ²	218.2 m ²	381.9 m ²	8	1	7	5	4	0	25
LEVEL 5	484.5 m ²	0.0 m ²	0.0 m ²	0.0 m ²	73.8 m ²	102.3 m ²	0	0	2	0	2	1	5
	9398.2 m ²	89.8 m ²	13509.3 m ²	388.7 m ²	1986.3 m ²	1726.2 m ²	44	8	30	16	21	3	122
							36.1%	6.6%	24.6%	13.1%	17.2%	2.5%	100%

GFA - BLD A	
LEVEL	AREA
GROUND	1702.3 m ²
LEVEL 1	2094.6 m ²
LEVEL 2	2235.4 m ²
LEVEL 3	2236.4 m ²
LEVEL 4	2123.9 m ²
LEVEL 5	532.8 m ²
	10925.4 m ²
	(INCLUDING COMMERCIAL)

BUILDING B - PITTWATER RD

LEVEL	RESIDENTIAL	RESIDENTIAL AMENITIES	PARKING	COMMERCIAL	CIRCULATION/SERVICES	TERRACE	APARTMENTS						TOTAL UNITS
							No. 1 BEDS	No. 1 BEDS PLUS	No. 2 BEDS	No. 2 BEDS PLUS	No. 3 BEDS	No. 3 BEDS PLUS	
GROUND	552.6 m ²	0.0 m ²	0.0 m ²	0.0 m ²	489.0 m ²	167.0 m ²	4	1	1	1	0	1	8
GROUND UPPER	0.0 m ²	0.0 m ²	0.0 m ²	0.0 m ²	14.0 m ²	0.0 m ²	0	0	0	0	0	0	0
LEVEL 1	818.4 m ²	0.0 m ²	0.0 m ²	0.0 m ²	213.2 m ²	165.6 m ²	4	2	6	0	0	0	12
LEVEL 1 UPPER	106.8 m ²	0.0 m ²	0.0 m ²	438.5 m ²	53.1 m ²	20.5 m ²	2	0	0	0	0	0	2
LEVEL 2	741.7 m ²	0.0 m ²	0.0 m ²	0.0 m ²	86.2 m ²	118.4 m ²	4	1	6	0	0	0	11
LEVEL 2 UPPER	483.0 m ²	0.0 m ²	0.0 m ²	0.0 m ²	56.5 m ²	73.3 m ²	2	0	1	1	2	0	6
LEVEL 3	741.8 m ²	0.0 m ²	0.0 m ²	0.0 m ²	89.4 m ²	118.4 m ²	4	1	6	0	0	0	11
LEVEL 3 UPPER	482.9 m ²	0.0 m ²	0.0 m ²	0.0 m ²	55.4 m ²	73.3 m ²	2	0	1	1	2	0	6
LEVEL 4	741.8 m ²	0.0 m ²	0.0 m ²	0.0 m ²	89.8 m ²	118.4 m ²	4	1	6	0	0	0	11
LEVEL 4 UPPER	482.8 m ²	0.0 m ²	0.0 m ²	0.0 m ²	55.7 m ²	72.9 m ²	2	0	1	1	2	0	6
LEVEL 5	622.8 m ²	0.0 m ²	0.0 m ²	0.0 m ²	70.1 m ²	118.9 m ²	4	0	4	0	1	0	9
LEVEL 5 UPPER	431.5 m ²	0.0 m ²	0.0 m ²	0.0 m ²	52.2 m ²	110.6 m ²	1	0	1	2	1	0	5
LEVEL 6 UPPER	489.5 m ²	0.0 m ²	0.0 m ²	0.0 m ²	53.9 m ²	88.7 m ²	1	0	1	0	2	1	5
LEVEL 7 UPPER	489.9 m ²	0.0 m ²	0.0 m ²	0.0 m ²	53.9 m ²	89.1 m ²	1	0	1	0	2	1	5
	7185.5 m ²	0.0 m ²	0.0 m ²	438.5 m ²	1432.3 m ²	1335.2 m ²	35	6	35	6	12	3	97
							36.1%	6.2%	36.1%	6.2%	12.4%	3.1%	100%

GFA - BLD B	
LEVEL	AREA
GROUND	650.4 m ²
LEVEL 1	1514.9 m ²
LEVEL 2	1377.6 m ²
LEVEL 3	1371.0 m ²
LEVEL 4	1375.6 m ²
LEVEL 5	1151.8 m ²
LEVEL 6	529.1 m ²
LEVEL 7	529.1 m ²
	8499.3 m ²
	(INCLUDING COMMERCIAL)

BUILDING A & B SUMMARY

RESIDENTIAL	RESIDENTIAL AMENITIES	PARKING	COMMERCIAL	CIRCULATION/SERVICES	TERRACE	APARTMENTS						TOTAL UNITS
						No. 1 BEDS	No. 1 BEDS PLUS	No. 2 BEDS	No. 2 BEDS PLUS	No. 3 BEDS	No. 3 BEDS PLUS	
16583.7 m ²	89.8 m ²	13256.0 m ²	827.2 m ²	8522.8 m ²	3061.5 m ²	79	14	65	22	33	6	219
						36.1%	6.4%	29.7%	10.0%	15.1%	2.7%	100%

GFA
AREA
19484.6 m ²
19484.6 m ²

BASEMENT CARPARKS				
Level	CARPARKS			
	Residential	Visitor	Commercial	Total
BASEMENT 03	83	0	0	83
BASEMENT 2	135	0	0	135
BASEMENT 01	41	47	28	116
	259	47	28	334

Level	Visitor Bicycle Parks
	BASEMENT 03
BASEMENT 2	7
BASEMENT 01	6
GROUND	2

AMENDED WARRINGAH DCP 2011

Parking rates within the Dee Why Town Centre

Multi-dwelling housing, Residential flat buildings, Serviced apartments, Shop-top housing:

- 0.6 spaces per 1 bedroom dwelling
- 0.9 spaces per 2 bedroom dwelling
- 1.4 spaces per 3 bedroom dwelling
- 1 visitor space per 5 units or part of dwellings
- 1 car share space per 25 dwellings (for properties with more than 25 dwellings) each with car share space replacing (1) regular car parking space.

Business Premises:

- 1 space per 40m² GFA excluding customer service/access areas
- for customer service/access areas 1 space per 16.4m² GFA

Office Premises:

- 1 space per 40m² GFA

Shop (includes retail/ business component of shop top housing, retail premises and neighbourhood shop):

- 1 space per 23.8m² GLFA (4.2 spaces per 100m² GLFA)

*For preliminary feasibility purposes. Areas are not to be used for purpose of lease or sale agreements. Layouts may not comply with building regulations or other regulatory requirements. The information contained in this schedule is believed to be correct at the time of printing. Areas are generally measured in accordance with the Property Council of Australia Method of Measurement.

Rothe Lowman Property Pty. Ltd. retain all common law, statutory law and other rights including copyright and intellectual property rights in respect of this document. The recipient indemnifies Rothe Lowman Property Pty. Ltd. against all claims resulting from use of this document for any purpose other than its intended use, unauthorised changes or reuse of the document on other projects without the permission of Rothe Lowman Property Pty. Ltd. Under no circumstance shall transfer of this document be deemed a sale or constitute a transfer of the license to use this document.

Revisions			
A	14.12.2021	DEVELOPMENT APPLICATION	JC
B	11.11.2022	COUNCIL SUBMISSION	JC
C	07.12.2022	COUNCIL SUBMISSION	JC
D	03.03.2023	COUNCIL SUBMISSION	JC
E	16.01.2024	MODIFICATION ISSUE	JC

Client / **Dee Why 3 Pty Ltd & Dee Why 4 Pty Ltd** Project / **4 Delmar Pde & 812 Pittwater Rd, Dee Why**

Drawing / **DEVELOPMENT SUMMARY**

Project No. / **221054** Date / **16.01.2024** Author / **JC**

Scale: @ A1

Drawing No. / **TP10.01 E**



Disclaimer: Rothe Lowman Property Pty. Ltd. retains all common law, statutory law and other rights including copyright and intellectual property rights in respect of this document. The recipient indemnifies Rothe Lowman Property Pty. Ltd. against all claims resulting from use of this document for any purpose other than its intended use, unauthorised changes or reuse of the document on other projects without the permission of Rothe Lowman Property Pty. Ltd. Under no circumstance shall transfer of this document be deemed a sale or constitute a transfer of the license to use this document. ABN 76 005 783 997

Brisbane, Melbourne, Sydney
www.rothelowman.com.au