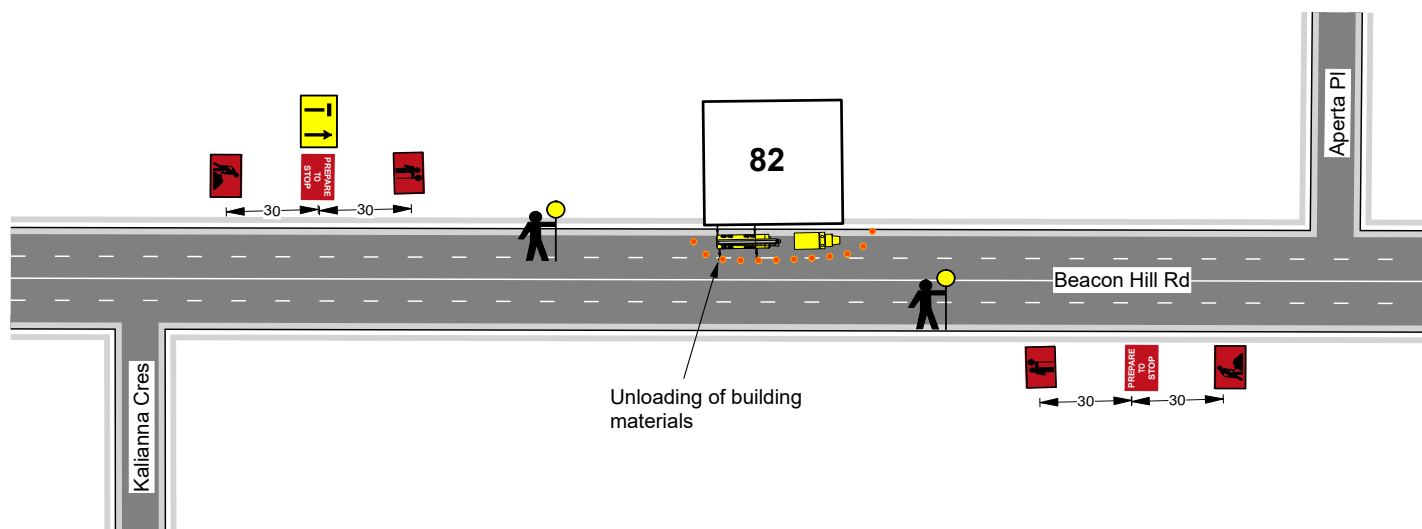


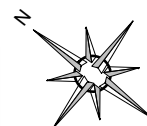
Rawson Homes

Lot 1 (No. 82) Beacon Hill Rd, BEACON HILL



NOTES

- a) This plan is drawn in accordance with RTA's TCA manual V4 & AS1742.3 2009
- b) Dm between signs D from last sign to start of tapers or traffic controller.
- c) Due to space confinements temporary signage in local streets may have reduced distances.
- d) All temporary signage to be size 'A or B' 1200x900mm while all distances are in metres.
- e) While work is undertaken all contradictory signage must be covered or removed. Special consideration will be given to the adjacent work site.
- f) Compliance with traffic control plans is to take precedence over operational expediency in all situations.



Traffic Guidance Scheme

Date: 20/07/2021	Author: Steven Flaskis	Project: New Plan
Comments:		
Lic # TCT0070384		
All signage to be set at Councils regulations		
As per AS1742.3 2009		
Not To scale		