



LIQUORLAND

Liquorland Warehouse Forestville

682 Warringah Road,
Forestville NSW 2087

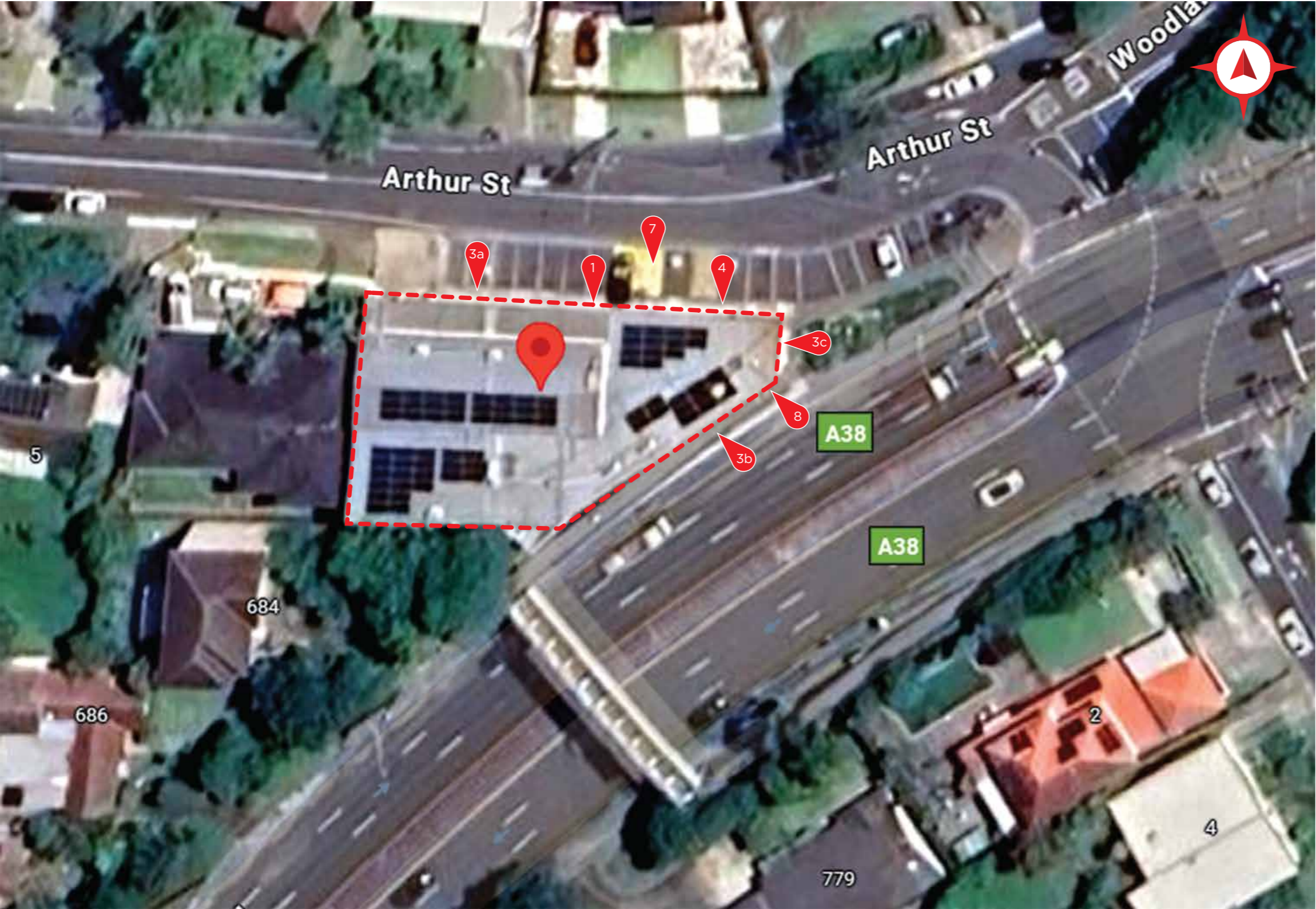
Q00000

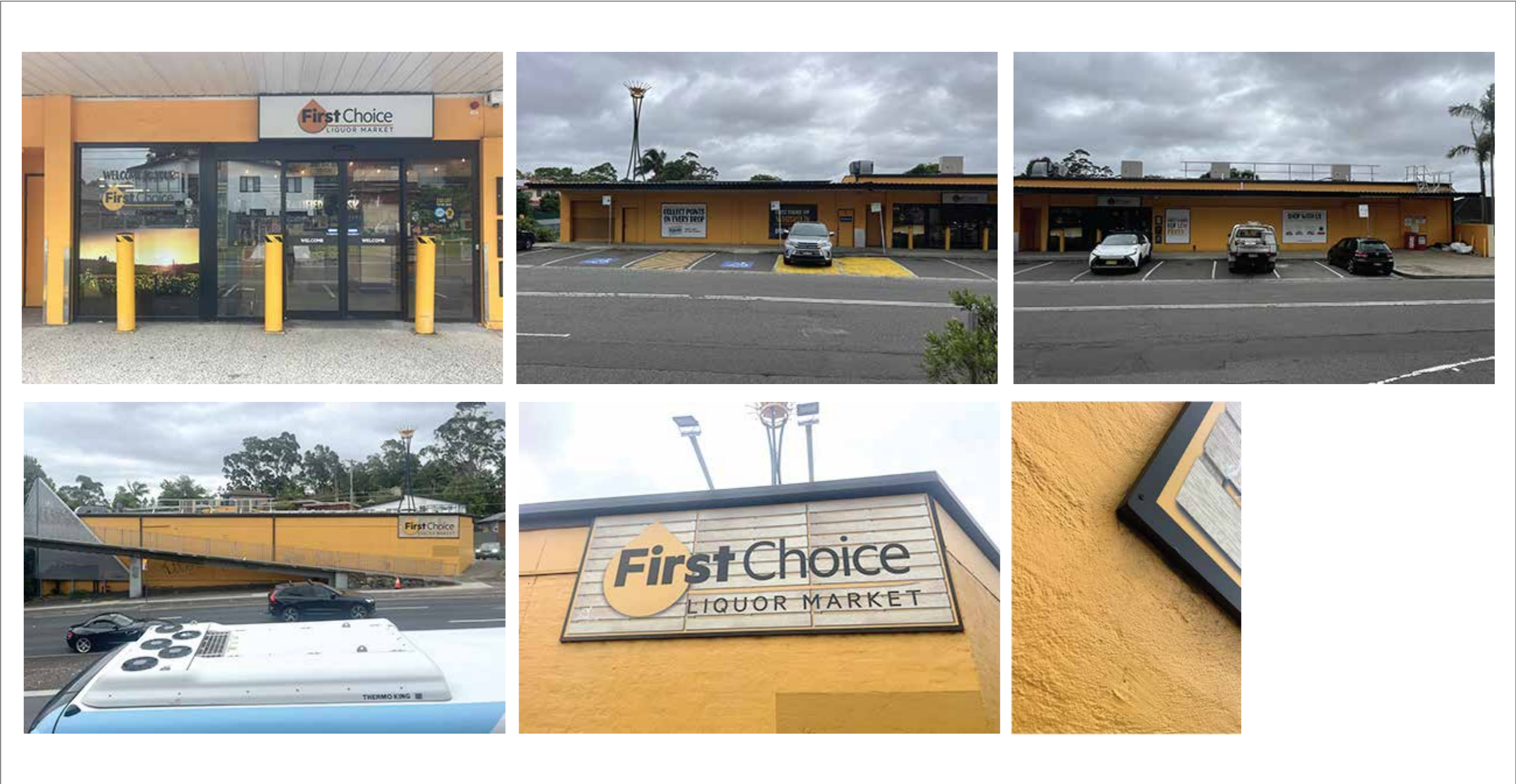



	SHEET SIZE	A3	DESIGNER REVIEW	PROJECT MGR REVIEW	FILE NAME: LIQUORLAND WAREHOUSE_FORESTVILLE_SIGNCRAFT_VER02_EXTERNAL SIGNAGE FILE PATH: LIQU-NSW-FORESTVI-2025>LLW REBRAND - FCLM 2025>DESIGN	REV	ISSUE	DESCRIPTION	DATE	BY	PAGE 01 / 07
	SHEET SCALE	NTS				01	FOR REVIEW	INITIAL RELEASE FOR COUNCIL APPROVAL	10/06/25	SC	
	SHEET UNITS	MM	ARTWORK FOR REVIEW	02							
				03							
				04							
			05								

682 Warringah Road
Forestville NSW 2087

- LLW-BOX-1 - Wall Mounted Lightbox
- LLW-FLPNL-3a- Flat Panel Wall Sign
- LLW-FLPNL-3b- Flat Panel Wall Sign
- LLW-FLPNL-3c- Flat Panel Wall Sign
- LLW-FLPNL-4- Flat Panel Wall Sign
- LLW-PARKBAY-7 - Painted Parking Bay
- LLW-FLPNL-8 - Flat Panel Wall Sign







SHEET SIZE

A3

SHEET SCALE

NTS

SHEET UNITS

MM

DESIGNER REVIEW

PROJECT MGR REVIEW

FILE NAME: LIQUORLAND WAREHOUSE_FORESTVILLE_SIGNCRAFT_VER02_EXTERNAL SIGNAGE

FILE PATH: LIQU-NSW-FORESTVI-2025>LLW REBRAND - FCLM 2025>DESIGN

REV

ISSUE

DESCRIPTION

DATE

BY

01

FOR REVIEW

INITIAL RELEASE FOR COUNCIL APPROVAL

10/06/25

SC

02

03

04

05

PAGE

03 / 07

ARTWORK FOR REVIEW

ARTWORK FOR REVIEW

BUILDING AND BOLLARDS PAINTED BY OTHERS

Proposed




- SIGN 1 - ILLUMINATED LIGHTBOX**
2300 x 600mm
3mm opal acrylic panel with matt black vinyl with the lettering weeded out to show opal behind
Remove existing panels
Repaint box/trims satin black (if required)
Retrofit fluros to LEDs (if required)
Insert new panels

- SIGN 3a - SIGNWRITING**
9594 x 2020mm
Signwriting direct to wall

- SIGN 4 - SIGNWRITING**
2178 x 2020mm
Signwriting direct to wall

Existing





SHEET SIZE

A3

SHEET SCALE

NTS

SHEET UNITS

MM

DESIGNER REVIEW

PROJECT MGR REVIEW

ARTWORK FOR REVIEW

FILE NAME: LIQUORLAND WAREHOUSE_FORESTVILLE_SIGNCRAFT_VER02_EXTERNAL SIGNAGE

FILE PATH: LIQU-NSW-FORESTVI-2025>LLW REBRAND - FCLM 2025>DESIGN

REV	ISSUE	DESCRIPTION	DATE	BY
01	FOR REVIEW	INITIAL RELEASE FOR COUNCIL APPROVAL	10/06/25	SC
02				
03				
04				
05				

PAGE

04 /07

BUILDING AND BOLLARDS PAINTED BY OTHERS

Proposed



- SIGN 1 - ILLUMINATED LIGHTBOX
- 2300 x 600mm
- 3mm opal acrylic panel with matt black vinyl with the lettering weeded out to show opal behind
- Remove existing panels
- Repaint box/trims satin black (if required)
- Retrofit fluros to LEDs (if required)
- Insert new panels

Existing



	SHEET SIZE	A3	DESIGNER REVIEW	PROJECT MGR REVIEW	FILE NAME: LIQUORLAND WAREHOUSE_FORESTVILLE_SIGNCRAFT_VER02_EXTERNAL SIGNAGE	REV	ISSUE	DESCRIPTION	DATE	BY	PAGE
	SHEET SCALE	NTS			FILE PATH: LIQU-NSW-FORESTVI-2025>LLW REBRAND - FCLM 2025>DESIGN	01	FOR REVIEW	INITIAL RELEASE FOR COUNCIL APPROVAL	10/06/25	SC	05 / 07
	SHEET UNITS	MM	ARTWORK FOR REVIEW			02					
						03					
						04					
						05					

BUILDING AND BOLLARDS PAINTED BY OTHERS

Proposed




SIGN 3b - SIGNWRITING
7124 x 1500mm
Signwriting direct to wall

SIGN 3c - SIGNWRITING
3500 x 736mm
Signwriting direct to wall

SIGN 8 - FLAT PANEL
3500 x 1500mm
2mm NCM aluminium panel
Digital print on white self-adhesive vinyl
with matt laminate

Existing





SHEET SIZE

A3

SHEET SCALE

NTS

SHEET UNITS

MM

DESIGNER REVIEW

PROJECT MGR REVIEW

ARTWORK FOR REVIEW

FILE NAME: LIQUORLAND WAREHOUSE_FORESTVILLE_SIGNCRAFT_VER02_EXTERNAL SIGNAGE

FILE PATH: LIQU-NSW-FORESTVI-2025>LLW REBRAND - FCLM 2025>DESIGN

REV	ISSUE	DESCRIPTION	DATE	BY
01	FOR REVIEW	INITIAL RELEASE FOR COUNCIL APPROVAL	10/06/25	SC
02				
03				
04				
05				

PAGE

06 / 07

