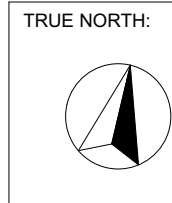


LOT	2
DP	246696
AREA CALCULATIONS	m <sup>2</sup>
SITE AREA	762.38



**NOTES (E & OE)**

- All structures including stormwater & drainage to engineer's details.
- Do not obtain dimensions by scaling drawings.
- All dimensions are to be checked on site prior to starting work.
- These drawings are to be read in conjunction with all other consultant's drawings and specifications.
- All workmanship & materials shall be in accordance with the requirements of current editions including amendments of the National Construction Code, relevant Australian Standards & local council requirements.
- New materials are to be used throughout unless otherwise noted.
- Concrete footings, slab, structural beams or any other structural members are to be designed by a practicing engineer.

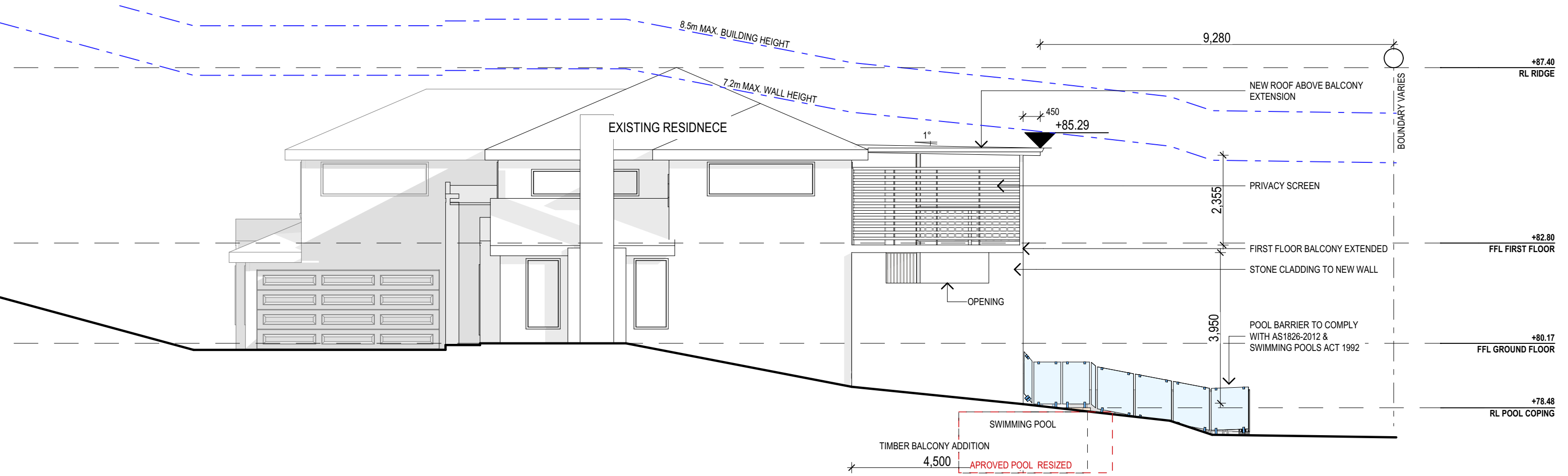
**JJ Drafting**  
Division of JJ DRAFTING AUSTRALIA PTY LTD  
26/90 Mona Vale Road, Mona Vale, NSW, 2103  
PO Box 687, Dee Why, NSW, 2099  
Mob. 0414 717 541 | Email. jjdraft@tpg.com.au  
www.jjdrafting.com.au  
ACN 651 693 346

REV:	DATE:	DESCRIPTION:
A	11.03.21	CHANGE LEVEL OF POOL
AB	15.12.21	POOL REDESIGN

PROJECT DETAILS: # SECTION 4.55  
PROPOSED ALTERATIONS AND ADDITIONS  
13 KINSDALE CLOSE KILLARNEY HEIGHTS

DRAWING TITLE:  
SITE ANALYSIS PLAN

DATE:	08/20	DRAWN BY:	HF	SCALE:	1:200 @ A3
JOB No:	823/20	CHECKED BY:	JJ	DRAWING No:	DA.01



NORTH ELEVATION  
1:100

**NOTES (E & OE)**

- All structures including stormwater & drainage to engineer's details.
- Do not obtain dimensions by scaling drawings.
- All dimensions are to be checked on site prior to starting work.
- These drawings are to be read in conjunction with all other consultant's drawings and specifications.
- All workmanship & materials shall be in accordance with the requirements of current editions including amendments of the National Construction Code, relevant Australian Standards & local council requirements.
- New materials are to be used throughout unless otherwise noted.
- Concrete footings, slab, structural beams or any other structural members are to be designed by a practicing engineer.

**JJ Drafting**

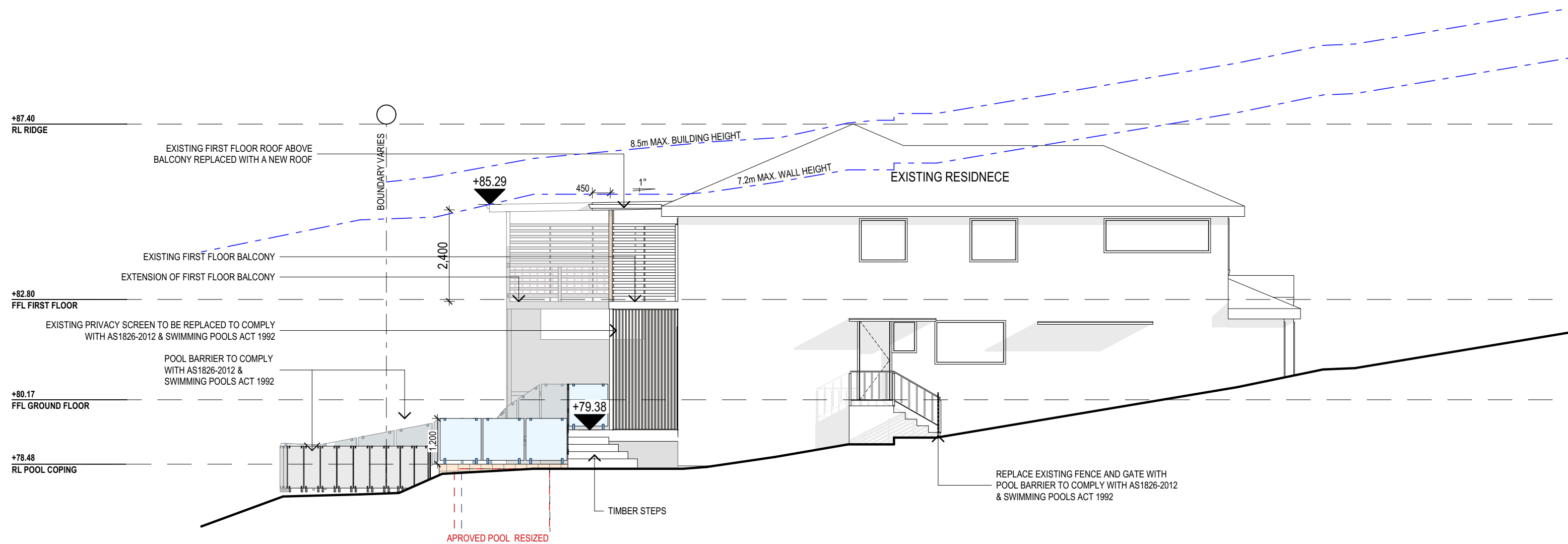
174 Garden St, North Narrabeen, NSW, 2101  
PO Box 687, Dee Why, NSW, 2099  
Mob. 0414 717 541  
Email. jjdraft@tpg.com.au  
www.jjdrafting.com.au

REV:	DATE:	DESCRIPTION:
A	11.03.21	CHANGE LEVEL OF POOL
AB	15.12.21	POOL REDESIGN

PROJECT DETAILS: # SECTION 4.55  
PROPOSED ALTERATIONS AND ADDITIONS  
13 KINSDALE CLOSE KILLARNEY HEIGHTS

DRAWING TITLE:  
NORTH ELEVATION

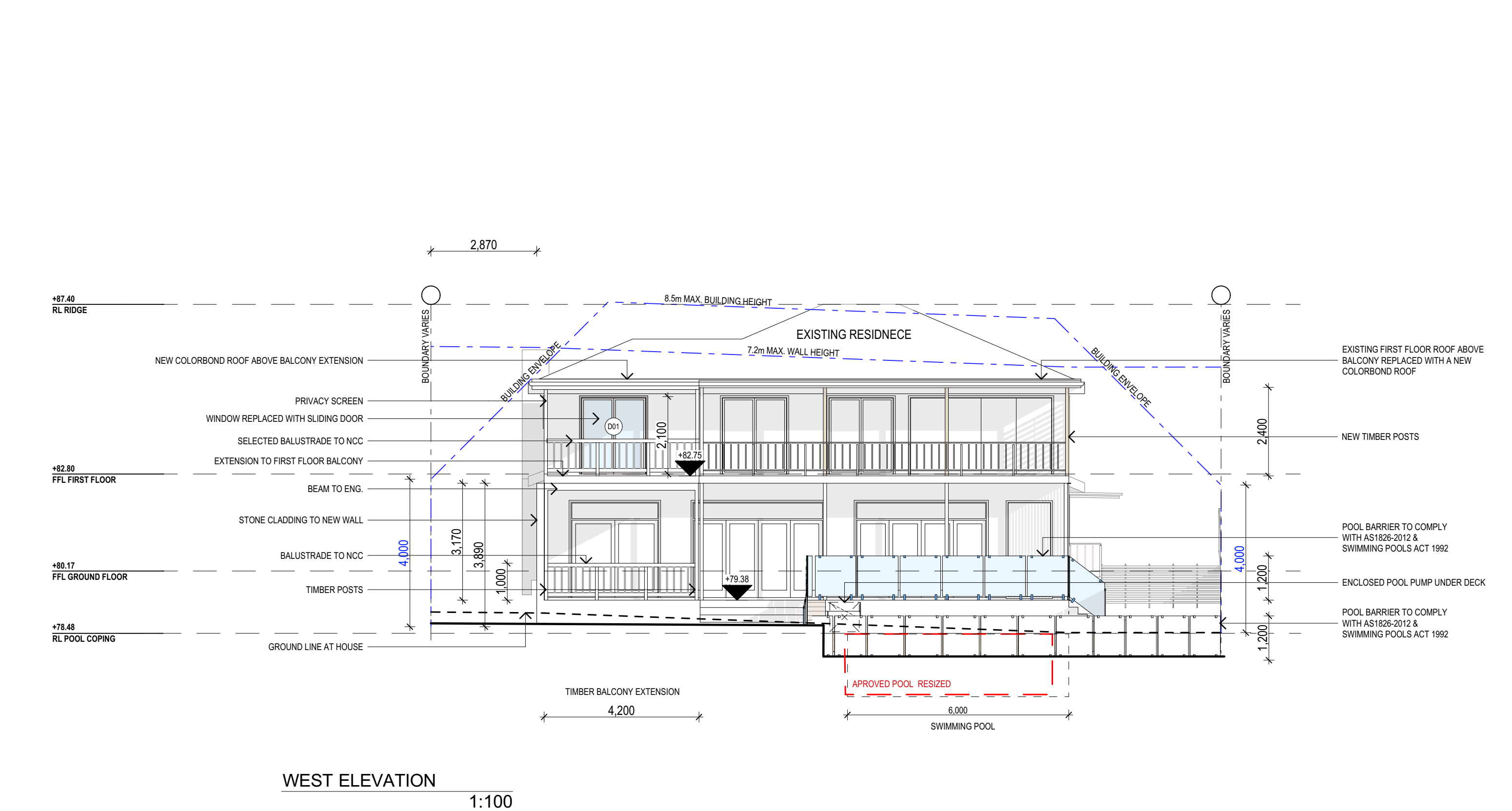
DATE: 08/20	DRAWN BY: HF	SCALE: 1:100 @ A3
JOB No: 823/20	CHECKED BY: JJ	DRAWING No: <b>DA.06</b>



SOUTH ELEVATION

1:100

	<b>NOTES</b> (E & OE) <ul style="list-style-type: none"><li>• All structures including stormwater &amp; drainage to engineer's details.</li><li>• Do not obtain dimensions by scaling drawings.</li><li>• All dimensions are to be checked on site prior to starting work.</li><li>• These drawings are to be read in conjunction with all other consultant's drawings and specifications.</li><li>• All workmanship &amp; materials shall be in accordance with the requirements of current editions including amendments of the National Construction Code, relevant Australian Standards &amp; local council requirements.</li><li>• New materials are to be used throughout unless otherwise noted.</li><li>• Concrete footings, slab, structural beams or any other structural members are to be designed by a practicing engineer.</li></ul>	<b>JJ Drafting</b> 174 Garden St, North Narrabeen, NSW, 2101 PO Box 687, Dee Why, NSW, 2099 Mob. 0414 717 541 Email. jjdraft@tpg.com.au www.jjdrafting.com.au	REV: A 11.03.21 CHANGE LEVEL OF POOL	DATE: 15.12.21	DESCRIPTION: POOL REDESIGN	PROJECT DETAILS: # SECTION 4.55 PROPOSED ALTERATIONS AND ADDITIONS 13 KINSDALE CLOSE KILLARNEY HEIGHTS	DATE: 08/20	DRAWN BY: HF	SCALE: 1:100 @ A3
							JOB No: 823/20	CHECKED BY: JJ	DRAWING No: DA.07



<div>NOTES (E &amp; OE)</div> <div><ul style="list-style-type: none"><li>• All structures including stormwater &amp; drainage to engineer's details.</li><li>• Do not obtain dimensions by scaling drawings.</li><li>• All dimensions are to be checked on site prior to starting work.</li><li>• These drawings are to be read in conjunction with all other consultant's drawings and specifications.</li><li>• All workmanship &amp; materials shall be in accordance with the requirements of current editions including amendments of the National Construction Code, relevant Australian Standards &amp; local council requirements.</li><li>• New materials are to be used throughout unless otherwise noted.</li><li>• Concrete footings, slab, structural beams or any other structural members are to be designed by a practicing engineer.</li></ul></div>	<div>JJ Drafting</div> <div>174 Garden St, North Narrabeen, NSW, 2101</div> <div>PO Box 687, Dee Why, NSW, 2099</div> <div>Mob. 0414 717 541</div> <div>Email. <a href="mailto:jjdraft@tpg.com.au">jjdraft@tpg.com.au</a></div> <div><a href="http://www.jjdrafting.com.au">www.jjdrafting.com.au</a></div>	<div>REV:</div> <div>A</div> <div>DATE:</div> <div>11.03.21</div> <div>DESCRIPTION:</div> <div>CHANGE LEVEL OF POOL</div>	<div>PROJECT DETAILS: # SECTION 4.55</div> <div>PROPOSED ALTERATIONS AND ADDITIONS</div> <div>13 KINSDALE CLOSE KILLARNEY HEIGHTS</div>	<div>DATE:</div> <div>08/20</div>	<div>DRAWN BY:</div> <div>HF</div>	<div>SCALE:</div> <div>1:100 @ A3</div>
		<div>AB</div> <div>15.12.21</div> <div>POOL REDESIGN</div>		<div>JOB No:</div> <div>823/20</div>	<div>CHECKED BY:</div> <div>JJ</div>	<div>DRAWING No:</div> <div>DA.08</div>