

LONG REEF - MIXED USE

DEVELOPMENT APPLICATION PACKAGE
JULY 2023



GARTNERTROVATO
ARCHITECTS



GTR02-DA-000

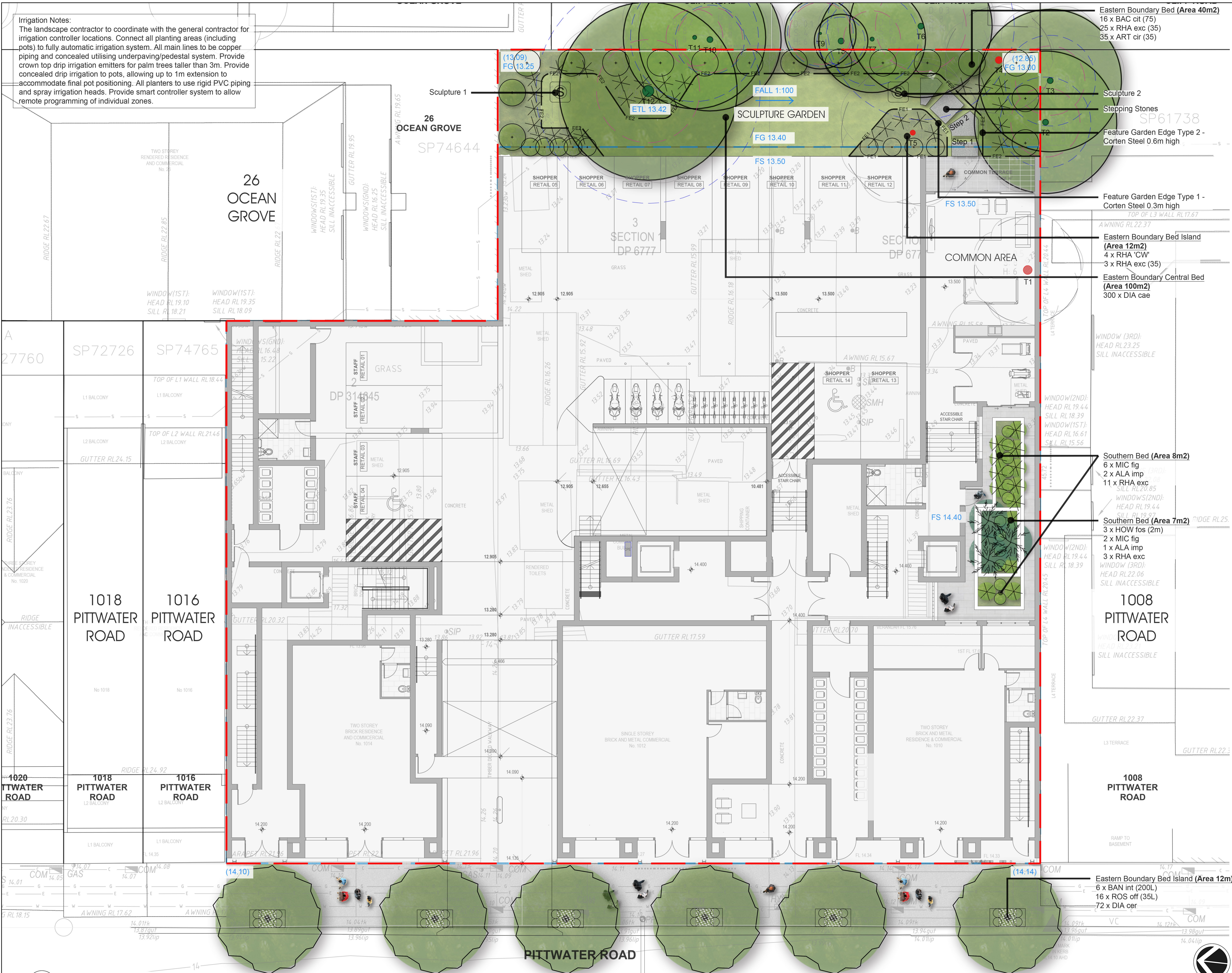
Project: Long Reef Mixed Use
Client: Gartner Trovato Architects
Issue: Development Application
Prepared: DF/CG
Date: 28/07/23

A

PLANT SCHEDULE						
GROUND LEVEL						
Abbreviation	Botanical Name	Common Name	Mature Height (m)	Pot Size	Qty	Comments
Trees						
BAC cit (75)	Backhousia citriodora	Lemon Myrtle	4-6	75L	16	
BAN int (200)	Banksia integrifolia	Coast Banksia	4-6	200L	6	Min. Caliber 70mm, clear stem 2.0m
HOW fos (4m)	Howea forsteriana	Kentia palm	12-15	-	3	Clear stem 4.0m high
Shrubs						
MIC fig	Michellia figo	Port Wine Magonolia	3	200mm		
RHA CW	Rhaphiolepis indica 'Cosmic White'	Indian Hawthorn	2	200mm		
ROS off	Rosmarinus officinalis	Rosemary	2	140mm		
Accents						
ALA imp	Alcantarea imperialis 'Ruby'	Imperial Bromiliad	1.5-3	400mm		
ART cir	Arthropodium cirratum	Ranga Lily	0.6	200mm		
ART cir (35)	Arthropodium cirratum	Ranga Lily	0.6	35L		
LEU bro (25)	Leucophyta brownii	Cusion Bush	1	25L		
RHA exc	Rhapis excelsa	The Lady Palm	4	300mm		
RHA exc (35)	Rhapis excelsa	The Lady Palm	4	35L		
Ferns						
CYA coo	Cyathea cooperi	Australian Tree Fern	6	300mm		
DOO asp	Doodia aspera	Pickly Rasp Fern	0.5	140mm		
Grasses & Groundcovers						
AJU rep CG	Ajuga reptans 'Catlin's Giant'	Carpet Bugle	0.3	140mm		
DIA cae	Dianella caerula	Paroo Lily	0.5	Tube		
DIA cae	Dianella caerula	Paroo Lily	0.5	Tube		
DIC rep	Dichondra repens	Kidney Weed	0.3	Tray		
GAR R (25)	Gardenia augusta 'Redican'	Gardenia	0.5	25L		
HIB sca	Hibbertia scandens	Guinea Flower	0.15-0.25	Tube		
LEVEL 1						
Abbreviation	Botanical Name	Common Name	Mature Height (m)	Pot Size	Qty	Comments
Trees						
ELA ret	Elaeocarpus reticulatus 'Primma Donna'	Blueberry Ash	8	75L	6	
ELA ret (100)	Elaeocarpus reticulatus 'Primma Donna'	Blueberry Ash	8	100L	5	
HOW fos (4m)	Howea forsteriana	Kentia palm	12-15	-	7	Clear stem 4.0m high
Shrubs						
ALP cae	Alpina caerulea	Native Ginger	3	300mm		
PIT MM (300)	Pittosporum tobira 'Miss Muffet'	Miss Muffet Pittosporum	0.8-1	300mm		
Accents						
ALA imp (400)	Alcantarea imperialis 'Ruby'	Imperial Bromiliad	1.5-3	400mm		
ART cir	Arthropodium cirratum	Ranga Lily	0.6	200mm		
RHA exc	Rhapis excelsa	The Lady Palm	4	300mm		
SPA LA	Spathiphyllum 'Little Angel'	Peace Lily	0.6	140mm		
STR nic	Strelitzia nicolai	Giant White Bird of Paradise	6	45L		
Ferns						
ASP aus	Asplenium australasicum	Birds Nest Fern	2	45L		
CYA coo (1m)	Cyathea cooperi	Australian Tree Fern	12	-		Clear stem 1.0m high
Grasses & Groundcovers						
ACA 'CI'	Casaurina glouca 'Cousin It'	Cousin It	0.3	140mm		
AJU rep CG	Ajuga reptans 'Catlin's Giant'	Carpet Bugle	0.3	140mm		
CAL ins	Calathea insignis	Rattlesnake Plant	0.4	200mm		
DIA cae	Dianella caerula 'producta'	Paroo Lily	0.5	Tube		
HOS sp.	Hosta species	Hosta	0.3	200mm		
JUN con	Juniperus conferta	Japanese Shore Juniper	0.3	200mm		
ROS P	Rosmarinus officinalis 'Prostratus'	Creeping Rosemary	0.3	140mm		
VIO hed	Viola hederacea	Native Viola	0.2	Tube		

LEVEL 2						
Abbreviation	Botanical Name	Common Name	Mature Height (m)	Pot Size	Qty	Comments
Shrubs						
LEU gal 'PH'	Leucadendron galpinii 'Purple Haze'	Sugar Bush	1.5	300mm		
RHA OP	Rhaphiolepis indica 'Oriental Pearl'	Indian Hawthorn	1	200mm		
Accents						
ALA imp (400)	Alcantarea imperialis 'Ruby'	Imperial Bromiliad	1.5-3	400mm		
Grasses & Groundcovers						
CAR app	Carex appressa	Tall Sage	0.4	140mm		
GAR R	Gardenia augusta 'Redican'	Gardenia	0.5	200mm		
LOM tan	Lomandra 'Tanika'	Mat Rush	0.5	140mm		
ROS P	Rosmarinus officinalis 'Prostratus'	Creeping Rosemary	0.3	140mm		
LEVEL 3						
Abbreviation	Botanical Name	Common Name	Mature Height (m)	Pot Size	Qty	Comments
Shrubs						
BAN spa	Banksia spinulosa	Hairpin banksia	1-3	45L		
RHA CW	Rhaphiolepis indica 'Cosmic White'	Indian Hawthorn	0.6	200mm		
THY max	Thysanolaena maxima	Tiger grass	2	75L		
THY vul	Thymus vulgaris	Garden thyme	0.2	200mm		
Accents						
ALA imp (300)	Alcantarea imperialis 'Ruby'	Imperial Bromiliad	1.5-3	300mm		
ALA imp (400)	Alcantarea imperialis 'Ruby'	Imperial Bromiliad	1.5-3	400mm		
DOR exc (45)	Doryanthes excelsa	Gymea Lily	2	45L		
DOR exc (75)	Doryanthes excelsa	Gymea Lily	2	75L		
LAV den	Lavandula dentata	French lavender	0.6	300mm		
SAL off	Salvia officinalis	Common sage	1.5	140mm		
SAL leu	Salvia leucantha	Salvia Mexican Sage	1-1.5	140mm		
Grasses & Groundcovers						
BRA BD	Brachyscome multifida 'Break of Day'	Cut Leaf Daisy	0.5	140mm		
CAR app	Carex appressa	Tall Sage	0.4	140mm		
DIA cae	Dianella caerula 'producta'	Paroo Lily	0.5	Tube		
DIC SF	Dichondra argentea 'Silver Falls'	Silver Kidney Creeper	0.3	140mm		
JUN con	Juniperus conferta	Japanese Shore Juniper	0.3	200mm		
ROS P	Rosmarinus officinalis 'Prostratus'	Creeping Rosemary	0.3	140mm		
SCA aem	Scaevola aemula	Fairy Fan-flower	0.4-0.5	140mm		
SEN ser	Senecio serpens	Blue Chalksticks	0.2-0.3	140mm		
TRA jas	Trachelospermum jasminoides	Star Jasmine	0.5	Tube		





GENERAL

PROPERTY BOUNDARY

BASEMENT OUTLINE

TREE RETENTION, REMOVAL AND PRUNING

EXISTING TREES - TO BE RETAINED & PROTECTED (as per AS4373 - 2007, AS4970 - 2009, and AS4907)

EXISTING TREES - TO BE REMOVED (include grubbing out stumps to 300mm and remediation of soil where applicable) Approved DA for Removal

MATERIALS, FINISHES & FURNITURE

FEATURE EDGE TYPE 1 - Corten Steel (0.3m high)

FEATURE EDGE TYPE 2 - Corten Steel (0.6m high)

Typical Raised Planter

PLANTING

PROPOSED TREES (REFER PLANTING PLANS)

MASS PLANTING

GRADING & DRAINAGE

(0.00)

EXISTING LEVELS

FG 0.00

FINISHED GROUND

FS 0.00

FINISHED SURFACE

ETL 0.00

EXISTING TREE LEVEL

28/07/2023	A	DEVELOPMENT APPLICATION	DF
24/07/2023	P1	DEVELOPMENT APPLICATION	DF
DATE	ISSUE	AMENDMENT	BY

PROJECT

LONG REEF MIXED USE
1010 - 1014 Pittwater Road, Collaroy, NSW

CLIENT

GARTNERTROVATO

ARCHITECTS

Suite 13, L1 Pittwater Pl,
10 Park St Mona Vale, NSW 2103

LANDSCAPE ARCHITECT

sym. studio

ARCHITECTS

Phone: 61 2 8411 2734
4G/6 Jubilee Avenue, Warriewood, NSW Australia
www.symstudio.com

DRAWING TITLE

Landscape Plan (1 of 4) - Ground Level

APPROVED FOR RELEASE

AILA #1420

DATE	DRAWN	CHECKED
28/07/23	AD	CG

PROJECT No.	DRAWING No.	ISSUE
GTR02	GTR02-DA-101	A

COPYRIGHT OF DESIGN SHOWN HERE IS RETAINED AND AUTHORITY FOR ANY REPRODUCTION, IF IN DOUBT ASK. FOLLOW WRITTEN DIMENSIONS ONLY. DO NOT SCALE OFF DRAWINGS. DO NOT KEEP SUPERSEDED DRAWINGS ON SITE.

COMPUTER DRAWING FILE: S:\Projects\2014\Warriewood\SC\CAD

1 Landscape Plan - (1 of 4) - Ground Level

Scale 1:100 @ A1

Irrigation Notes:
The landscape contractor to coordinate with the general contractor for irrigation controller locations. Connect all planting areas (including pots) to fully automatic irrigation system. All main lines to be copper piping and concealed utilising underpaving/pedestal system. Provide crown top drip irrigation emitters for palm trees taller than 3m. Provide concealed drip irrigation to pots, allowing up to 1m extension to accommodate final pot positioning. All planters to use rigid PVC piping and spray irrigation heads. Provide smart controller system to allow remote programming of individual zones.

Eastern Boundary Planter - Shallow
(Area 18m²)
75 x DIA cae 'producta'

Eastern Boundary Planter - Deep
(Area 18m²)
4 x ELE ret
3 x HOW fos (4m)
18 x JUN con

Linear Core Planter - Shallow
(Area 7m²)
5 x CYA coo (1m)
6 x ART cir

Linear Core Planter - Deep
(Area 8m²)
2 x ELE ret
1 x HOW fos (4m)

Central Core Planter - Shallow (Area 24m²)
125 x DIA cae

Central Core Planter - Deep (Area 36m²)
5 x ELE ret (100)
3 x HOW fos (4m)
5 x CYA coo (1m)
15 x RHA exc
5 x ALA imp (400)
5 x STR nic
5 x ART cir
5 x HOS sp.

GENERAL

- PROPERTY BOUNDARY
- BASEMENT OUTLINE

TREE RETENTION, REMOVAL AND PRUNING

- EXISTING TREES - TO BE RETAINED & PROTECTED (as per AS4373 - 2007, AS4970 - 2009, and AS4907)
- EXISTING TREES - TO BE REMOVED (include grubbing out stumps to 300mm and remediation of soil where applicable) Approved DA for Removal

MATERIALS, FINISHES & FURNITURE

- FEATURE EDGE TYPE 1 - Corten Steel (0.3m high)
- FEATURE EDGE TYPE 2 - Corten Steel (0.6m high)
- Typical Raised Planter

PLANTING

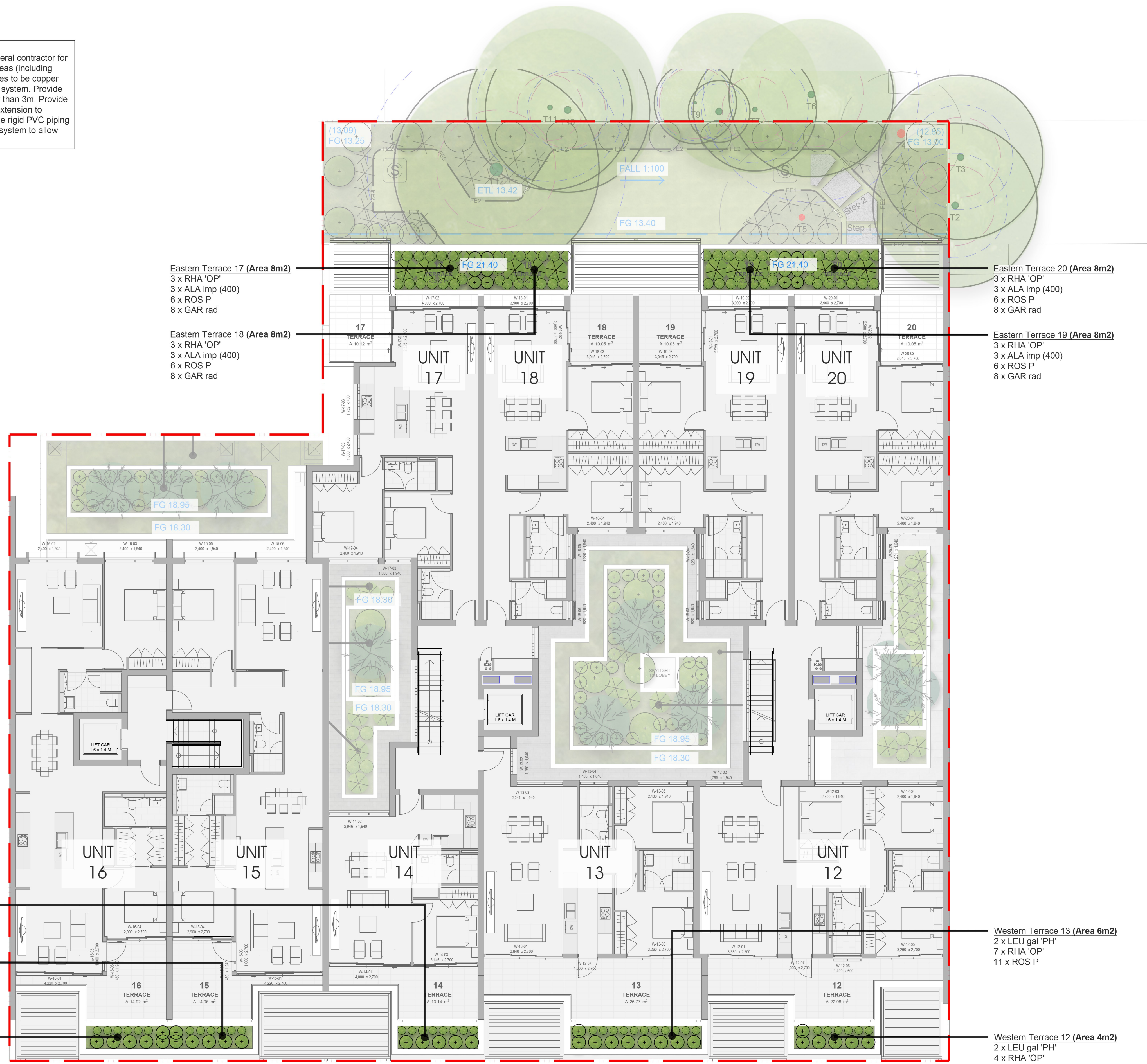
- PROPOSED TREES (REFER PLANTING PLANS)
- MASS PLANTING

GRADING & DRAINAGE

- EXISTING LEVELS
- FINISHED GROUND
- FINISHED SURFACE
- EXISTING TREE LEVEL

28/07/2023	A	DEVELOPMENT APPLICATION	DF
24/07/2023	P1	DEVELOPMENT APPLICATION	DF
DATE	ISSUE	AMENDMENT	BY
PROJECT			
LONG REEF MIXED USE			
1010 - 1014 Pittwater Road, Collaroy, NSW			
CLIENT			
GARTNERTROVATO ARCHITECTS			
Suite 13, L1 Pittwater Pl, 10 Park St Mona Vale, NSW 2103			
LANDSCAPE ARCHITECT			
sym. studio			
Phone: 61 2 8411 2734 4G/6Jubilee Avenue, Warriewood, NSW Australia www.symstudio.com			
DRAWING TITLE			
Landscape Plan (2 of 4) - Level 1			
APPROVED FOR RELEASE			
AILA #1420			
DATE	DRAWN	CHECKED	
28/07/23	AD	CG	
PROJECT No.	DRAWING No.	ISSUE	
GTR02	GTR02-DA-102	A	
COPYRIGHT OF DESIGN SHOWN HERE IS RETAINED AND AUTHORITY FOR ANY REPRODUCTION, IF IN DOUBT ASK. FOLLOW WRITTEN DIMENSIONS ONLY. DO NOT SCALE OFF DRAWINGS. DO NOT KEEP SUPERSEDED DRAWINGS ON SITE.			
COMPUTER DRAWING FILE: S:\Projects\2014\Warriewood\SC\CAD			

Irrigation Notes:
The landscape contractor to coordinate with the general contractor for irrigation controller locations. Connect all planting areas (including pots) to fully automatic irrigation system. All main lines to be copper piping and concealed utilising underpaving/pedestal system. Provide crown top drip irrigation emitters for palm trees taller than 3m. Provide concealed drip irrigation to pots, allowing up to 1m extension to accommodate final pot positioning. All planters to use rigid PVC piping and spray irrigation heads. Provide smart controller system to allow remote programming of individual zones.



- GENERAL
- PROPERTY BOUNDARY
 - BASEMENT OUTLINE
- TREE RETENTION, REMOVAL AND PRUNING
- EXISTING TREES - TO BE RETAINED & PROTECTED (as per AS4373 - 2007, AS4970 - 2009, and AS4907)
 - EXISTING TREES - TO BE REMOVED (include grubbing out stumps to 300mm and remediation of soil where applicable) Approved DA for Removal
- MATERIALS, FINISHES & FURNITURE
- FEATURE EDGE TYPE 1 - Corten Steel (0.3m high)
 - FEATURE EDGE TYPE 2 - Corten Steel (0.6m high)
 - Typical Raised Planter
- PLANTING
- PROPOSED TREES (REFER PLANTING PLANS)
 - MASS PLANTING
- GRADING & DRAINAGE
- EXISTING LEVELS
 - FINISHED GROUND
 - FINISHED SURFACE
 - EXISTING TREE LEVEL

Western Terrace 14 (Area 4m2)
5 x RHA 'OP'
8 x ROS P

Western Terrace 15 (Area 4m2)
2 x LEU gal 'PH'
4 x RHA 'OP'
6 x ROS P

Western Terrace 12 (Area 4m2)
2 x LEU gal 'PH'
4 x RHA 'OP'
6 x ROS P

Eastern Terrace 17 (Area 8m2)
3 x RHA 'OP'
3 x ALA imp (400)
6 x ROS P
8 x GAR rad

Eastern Terrace 18 (Area 8m2)
3 x RHA 'OP'
3 x ALA imp (400)
6 x ROS P
8 x GAR rad

Eastern Terrace 20 (Area 8m2)
3 x RHA 'OP'
3 x ALA imp (400)
6 x ROS P
8 x GAR rad

Eastern Terrace 19 (Area 8m2)
3 x RHA 'OP'
3 x ALA imp (400)
6 x ROS P
8 x GAR rad

Western Terrace 13 (Area 6m2)
2 x LEU gal 'PH'
7 x RHA 'OP'
11 x ROS P

Western Terrace 12 (Area 4m2)
2 x LEU gal 'PH'
4 x RHA 'OP'
6 x ROS P

28/07/2023	A	DEVELOPMENT APPLICATION	DF
24/07/2023	P1	DEVELOPMENT APPLICATION	DF
DATE	ISSUE	AMENDMENT	BY
PROJECT			
LONG REEF MIXED USE			
1010 - 1014 Pittwater Road, Collaroy, NSW			
CLIENT			
GARTNERTROVATO ARCHITECTS			
Suite 13, L1 Pittwater Pl, 10 Park St Mona Vale, NSW 2103			
LANDSCAPE ARCHITECT			
sym. studio			
Phone: 61 2 8411 2734 4/6 Jubilee Avenue, Warriewood, NSW Australia www.symstudio.com			
DRAWING TITLE			
Landscape Plan (3 of 4) - Level 2			
APPROVED FOR RELEASE			
AILA #1420			
DATE	DRAWN	CHECKED	
28/07/23	AD	CG	
PROJECT No.	DRAWING No.	ISSUE	
GTR02	GTR02-DA-103	A	
COPYRIGHT OF DESIGN SHOWN HERE IS RETAINED AND AUTHORITY FOR ANY REPRODUCTION, IF IN DOUBT ASK, FOLLOW WRITTEN DIMENSIONS ONLY. DO NOT SCALE OFF DRAWINGS. DO NOT KEEP SUPERSEDED DRAWINGS ON SITE.			
COMPUTER DRAWING FILE: S:\Projects\2014\Warriewood\SC\CAD			

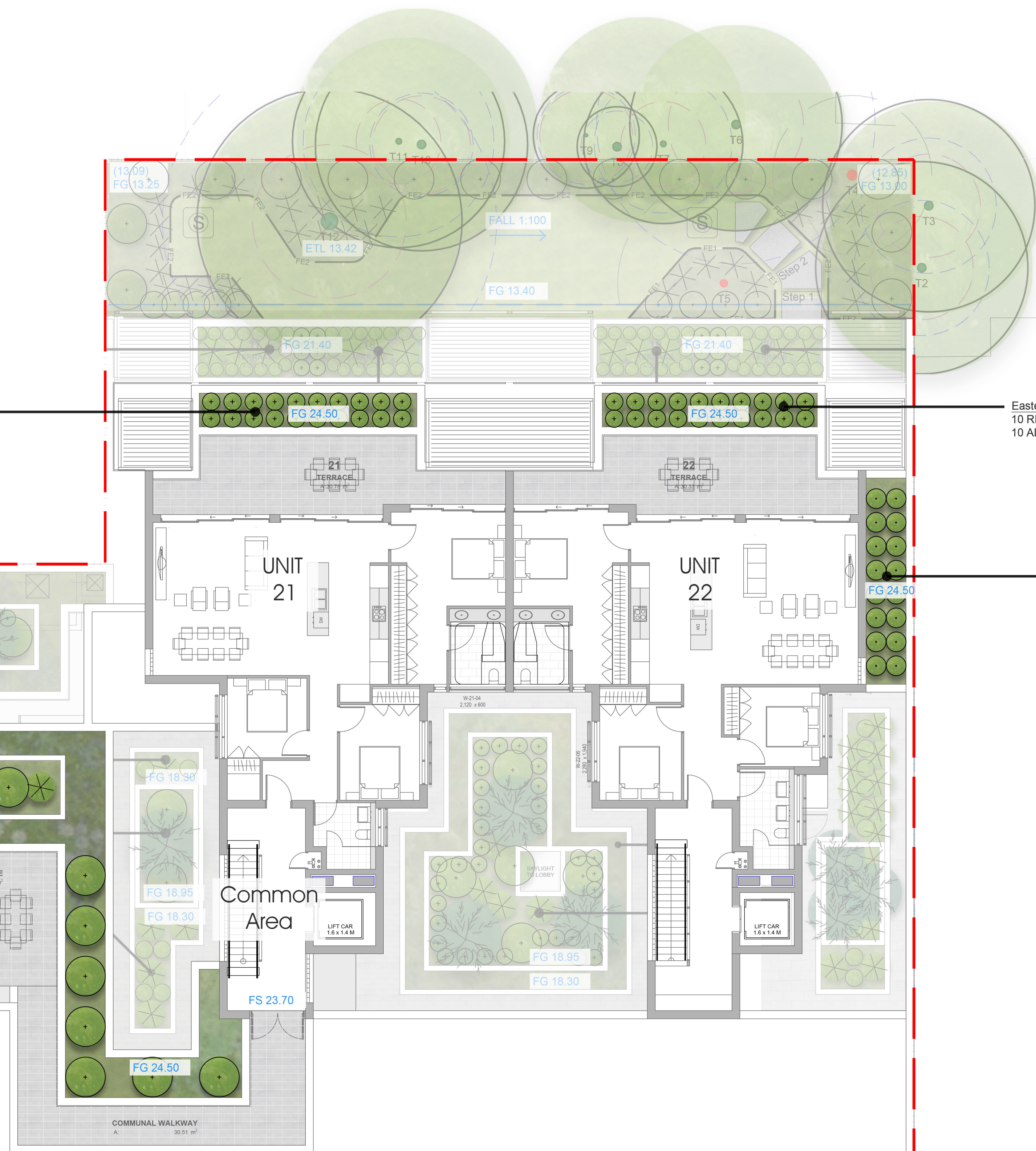
Irrigation Notes:
The landscape contractor to coordinate with the general contractor for irrigation controller locations. Connect all planting areas (including pots) to fully automatic irrigation system. All main lines to be copper piping and concealed utilising underpaving/pedestal system. Provide crown top drip irrigation emitters for palm trees taller than 3m. Provide concealed drip irrigation to pots, allowing up to 1m extension to accommodate final pot positioning. All planters to use rigid PVC piping and spray irrigation heads. Provide smart controller system to allow remote programming of individual zones.

Eastern Terrace 21 (Area 8m2)
10 RHA 'CW'
10 ALA imp (400)

Eastern Terrace 22 (Area 8m2)
10 RHA 'CW'
10 ALA imp (400)

Northern Planter - Shallow (Area 58m2)
7 BAN spi 'BC' (35L)
50 DIA cae 'producta'

Northern Planter - Deep (Area 27m2)
2 x DOR exc (45)
1 x DOR exc (75)
3 x ACA cog (35)
10 x THY max
11 x RHA 'CW'
2 x DOR exc (45)
1 x DOR exc (75)
3 x ACA cog (35)
5 x SAL leu
5 x LAV den



GENERAL

- PROPERTY BOUNDARY
- BASEMENT OUTLINE

TREE RETENTION, REMOVAL AND PRUNING

- EXISTING TREES - TO BE RETAINED & PROTECTED (as per AS4373 - 2007, AS4970 - 2009, and AS4907)
- EXISTING TREES - TO BE REMOVED (include grubbing out stumps to 300mm and remediation of soil where applicable) Approved DA for Removal

MATERIALS, FINISHES & FURNITURE

- FEATURE EDGE TYPE 1 - Corten Steel (0.3m high)
- FEATURE EDGE TYPE 2 - Corten Steel (0.6m high)
- Typical Raised Planter

PLANTING

- PROPOSED TREES (REFER PLANTING PLANS)
- MASS PLANTING

GRADING & DRAINAGE

- EXISTING LEVELS
- FINISHED GROUND
- FINISHED SURFACE
- EXISTING TREE LEVEL

28/07/2023	A	DEVELOPMENT APPLICATION	DF
24/07/2023	P1	DEVELOPMENT APPLICATION	DF
DATE	ISSUE	AMENDMENT	BY

PROJECT
LONG REEF MIXED USE
1010 - 1014 Pittwater Road, Collaroy, NSW

CLIENT
GARTNERTROVATO
ARCHITECTS
Suite 13, L1 Pittwater Pl,
10 Park St Mona Vale, NSW 2103

LANDSCAPE ARCHITECT
sym. studio
Phone: 61 2 8411 2734
4/6 Jubilee Avenue, Warriewood, NSW Australia
www.symstudio.com

DRAWING TITLE
Landscape Plan (4 of 4) - Level 3

APPROVED FOR RELEASE
AILA #1420

DATE	DRAWN	CHECKED
28/07/23	AD	CG

PROJECT No.	DRAWING No.	ISSUE
GTR02	GTR02-DA-104	A

COPYRIGHT OF DESIGN SHOWN HERE IS RETAINED AND AUTHORITY FOR ANY REPRODUCTION, IF IN DOUBT ASK, FOLLOW WRITTEN DIMENSIONS ONLY. DO NOT SCALE OFF DRAWINGS. DO NOT KEEP SUPERSEDED DRAWINGS ON SITE.
COMPUTER DRAWING FILE: S:\Projects\2014\Warriewood\SC\CAD