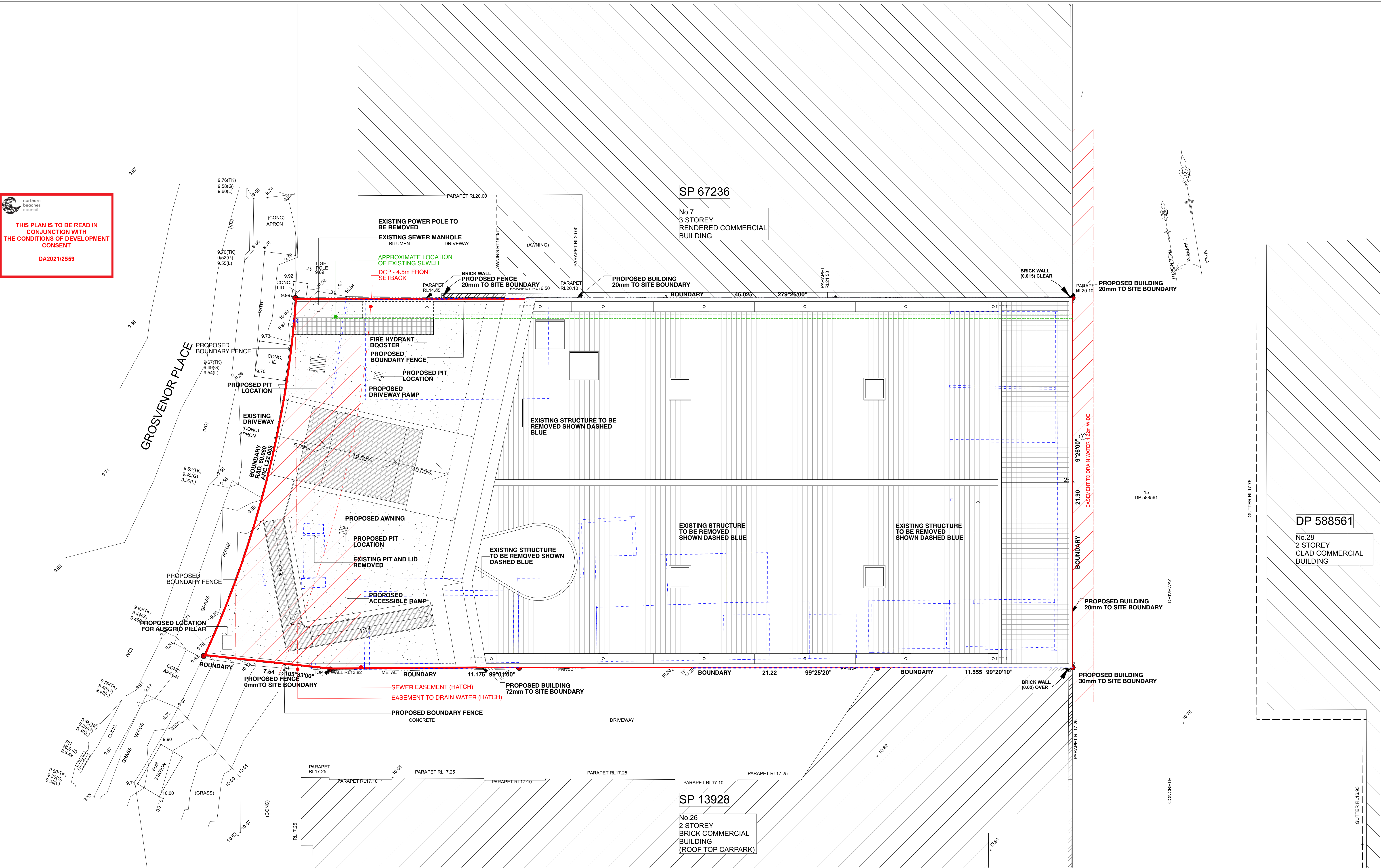


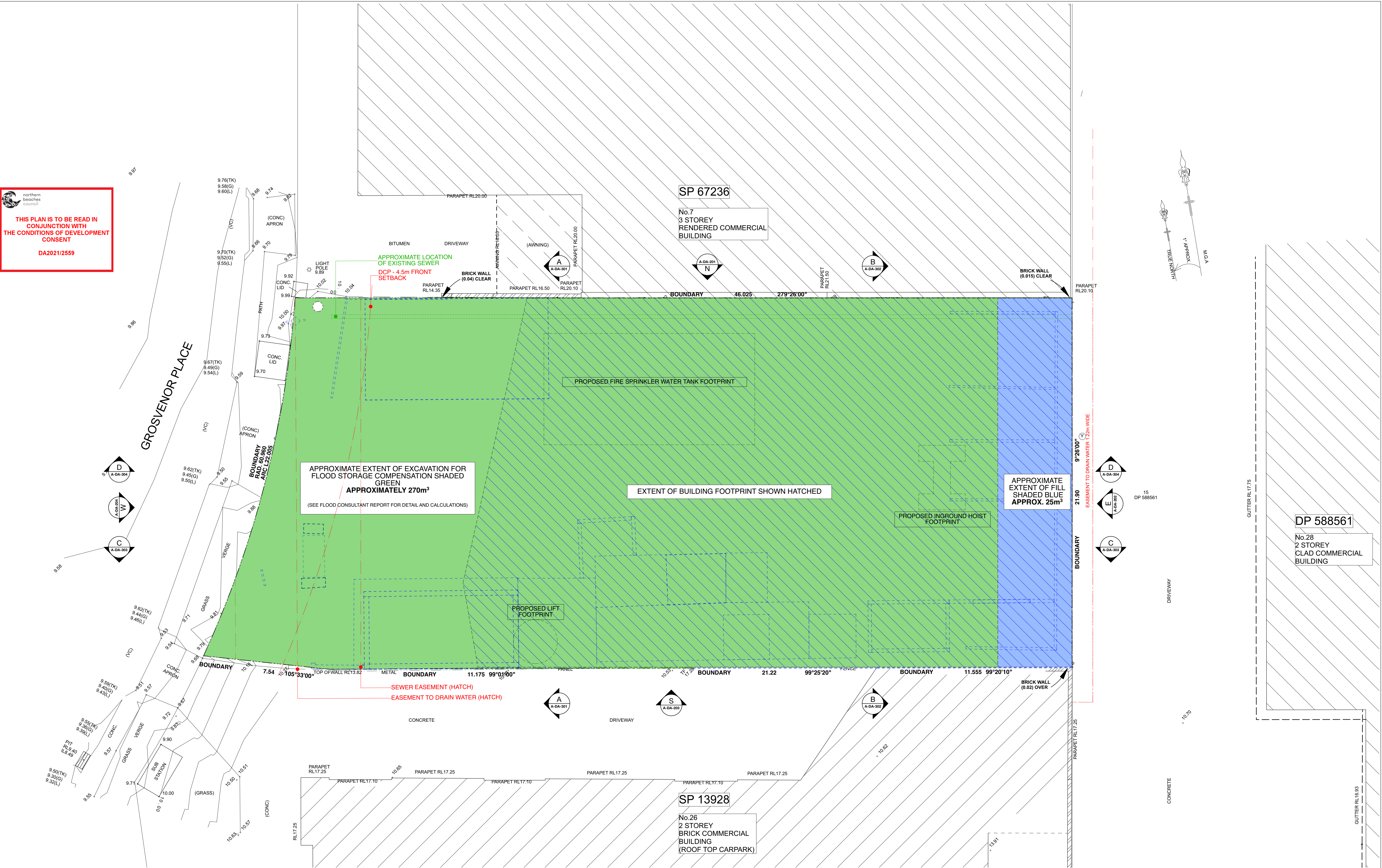
 **THIS PLAN IS TO BE READ IN CONJUNCTION WITH THE CONDITIONS OF DEVELOPMENT CONSENT**
DA2021/2559



NOTES:
1. THE CONCEPTS AND INFORMATION CONTAINED IN THIS DOCUMENT ARE THE COPYRIGHT OF CHENCHOW LITTLE PTY LTD. USE OR COPYING OF THE DOCUMENT IN WHOLE OR PART WITHOUT THE PERMISSION OF CHENCHOW LITTLE PTY LTD CONSTITUTES AN INFRINGEMENT OF COPYRIGHT.
2. THIS DRAWING IS FOR DESIGN CONCEPT ONLY. IT IS NOT TO BE USED FOR A CONSTRUCTION CERTIFICATE APPLICATION, TENDERING OR FOR CONSTRUCTION PURPOSES.
3. ALL LEVEL INFORMATION AND BOUNDARY DIMENSIONS ARE FROM THE SURVEY BY NORTON SURVEY PARTNERS.
4. DO NOT SCALE DRAWINGS.
5. THIS DRAWING IS ONLY FOR USE ON THE SITE AND FOR THE CLIENT IDENTIFIED ON THIS TITLE BLOCK.
6. VERIFY ALL DIMENSIONS AND LEVELS ON SITE PRIOR TO COMMENCEMENT OF WORK. IMMEDIATELY ADVISE ARCHITECT OF ANY DISCREPANCIES. ALLOW FOR ADJUSTMENTS TO SUIT DISCREPANCIES.
7. ALL WORK IS TO BE CARRIED OUT IN ACCORDANCE WITH THE REQUIREMENTS OF LOCAL AUTHORITIES, THE BUILDING CODE OF AUSTRALIA AND RELEVANT AUSTRALIAN STANDARDS.

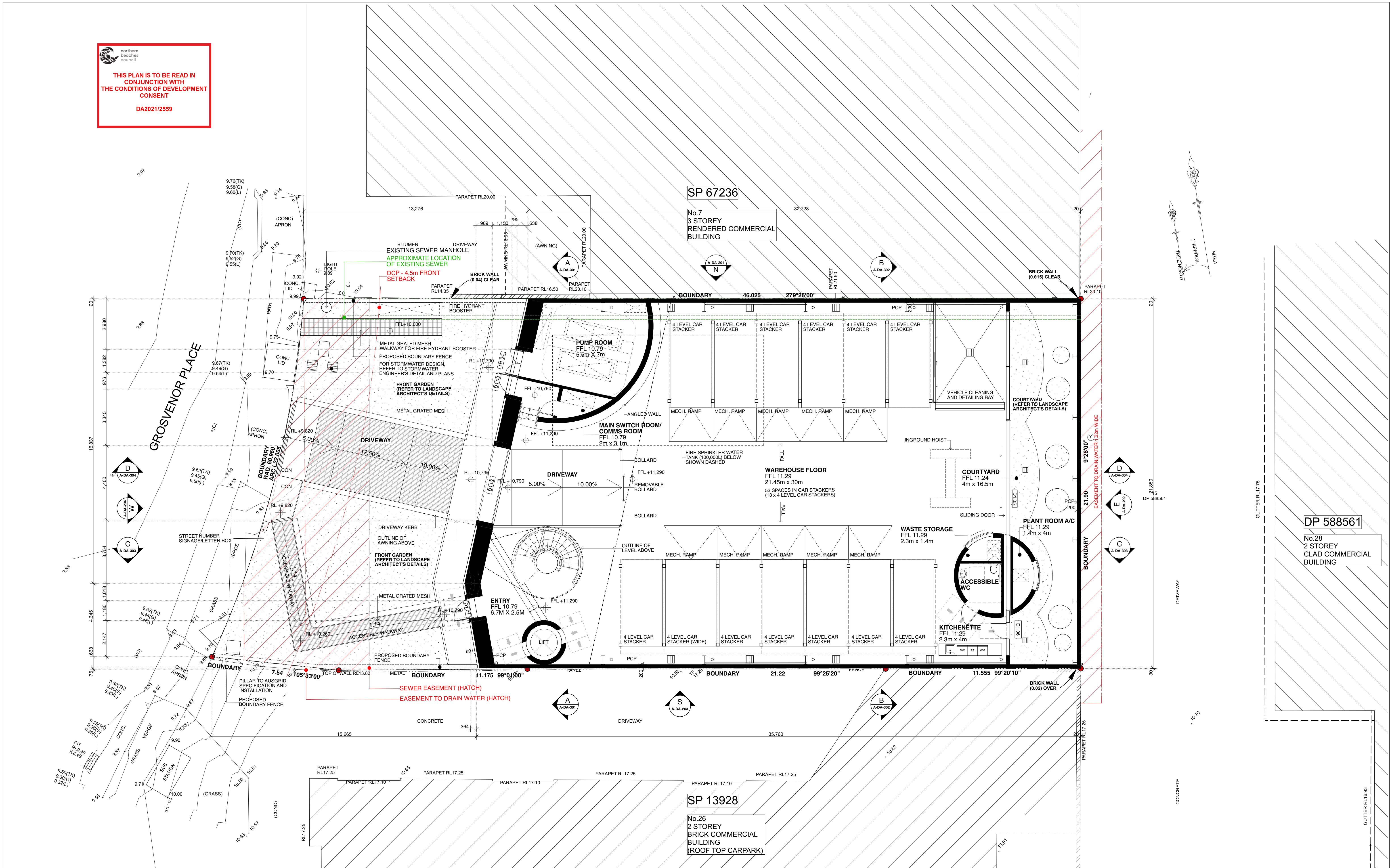
<

THIS PLAN IS TO BE READ IN CONJUNCTION WITH THE CONDITIONS OF DEVELOPMENT CONSENT
DA2021/2559



<div>NOTES:</div> <div>1. THE CONCEPTS AND INFORMATION CONTAINED IN THIS DOCUMENT ARE THE COPYRIGHT OF CHENCHOW LITTLE PTY LTD. USE OR COPYING OF THE DOCUMENT IN WHOLE OR PART WITHOUT THE PERMISSION OF CHENCHOW LITTLE PTY LTD CONSTITUTES AN INFRINGEMENT OF COPYRIGHT.</div> <div>2. THIS DRAWING IS FOR DESIGN CONCEPT ONLY. IT IS NOT TO BE USED FOR A CONSTRUCTION CERTIFICATE APPLICATION, TENDERING OR FOR CONSTRUCTION PURPOSES.</div> <div>3. ALL LEVEL INFORMATION AND BOUNDARY DIMENSIONS ARE FROM THE SURVEY BY NORTON SURVEY PARTNERS.</div> <div>4. DO NOT SCALE DRAWINGS.</div> <div>5. THIS DRAWING IS ONLY FOR USE ON THE SITE AND FOR THE CLIENT IDENTIFIED ON THIS TITLE BLOCK.</div> <div>6. VERIFY ALL DIMENSIONS AND LEVELS ON SITE PRIOR TO COMMENCEMENT OF WORK. IMMEDIATELY ADVISE ARCHITECT OF ANY DISCREPANCIES. ALLOW FOR ADJUSTMENTS TO SUIT DISCREPANCIES.</div> <div>7. ALL WORK IS TO BE CARRIED OUT IN ACCORDANCE WITH THE REQUIREMENTS OF LOCAL AUTHORITIES, THE BUILDING CODE OF AUSTRALIA AND RELEVANT AUSTRALIAN STANDARDS.</div>																																																																																																																																																																																																																																																																																																																																																																																																																																																																																																																																																																																																																																																																																																																																																																																																																																																																																																																																																																																																																																																																																																																																																																																																																																																																																																																																																																																																																																																																																																																																																																																								
---	--	--	--	--	--	--	--	--	--	--	--	--	--	--	--	--	--	--	--	--	--	--	--	--	--	--	--	--	--	--	--	--	--	--	--	--	--	--	--	--	--	--	--	--	--	--	--	--	--	--	--	--	--	--	--	--	--	--	--	--	--	--	--	--	--	--	--	--	--	--	--	--	--	--	--	--	--	--	--	--	--	--	--	--	--	--	--	--	--	--	--	--	--	--	--	--	--	--	--	--	--	--	--	--	--	--	--	--	--	--	--	--	--	--	--	--	--	--	--	--	--	--	--	--	--	--	--	--	--	--	--	--	--	--	--	--	--	--	--	--	--	--	--	--	--	--	--	--	--	--	--	--	--	--	--	--	--	--	--	--	--	--	--	--	--	--	--	--	--	--	--	--	--	--	--	--	--	--	--	--	--	--	--	--	--	--	--	--	--	--	--	--	--	--	--	--	--	--	--	--	--	--	--	--	--	--	--	--	--	--	--	--	--	--	--	--	--	--	--	--	--	--	--	--	--	--	--	--	--	--	--	--	--	--	--	--	--	--	--	--	--	--	--	--	--	--	--	--	--	--	--	--	--	--	--	--	--	--	--	--	--	--	--	--	--	--	--	--	--	--	--	--	--	--	--	--	--	--	--	--	--	--	--	--	--	--	--	--	--	--	--	--	--	--	--	--	--	--	--	--	--	--	--	--	--	--	--	--	--	--	--	--	--	--	--	--	--	--	--	--	--	--	--	--	--	--	--	--	--	--	--	--	--	--	--	--	--	--	--	--	--	--	--	--	--	--	--	--	--	--	--	--	--	--	--	--	--	--	--	--	--	--	--	--	--	--	--	--	--	--	--	--	--	--	--	--	--	--	--	--	--	--	--	--	--	--	--	--	--	--	--	--	--	--	--	--	--	--	--	--	--	--	--	--	--	--	--	--	--	--	--	--	--	--	--	--	--	--	--	--	--	--	--	--	--	--	--	--	--	--	--	--	--	--	--	--	--	--	--	--	--	--	--	--	--	--	--	--	--	--	--	--	--	--	--	--	--	--	--	--	--	--	--	--	--	--	--	--	--	--	--	--	--	--	--	--	--	--	--	--	--	--	--	--	--	--	--	--	--	--	--	--	--	--	--	--	--	--	--	--	--	--	--	--	--	--	--	--	--	--	--	--	--	--	--	--	--	--	--	--	--	--	--	--	--	--	--	--	--	--	--	--	--	--	--	--	--	--	--	--	--	--	--	--	--	--	--	--	--	--	--	--	--	--	--	--	--	--	--	--	--	--	--	--	--	--	--	--	--	--	--	--	--	--	--	--	--	--	--	--	--	--	--	--	--	--	--	--	--	--	--	--	--	--	--	--	--	--	--	--	--	--	--	--	--	--	--	--	--	--	--	--	--	--	--	--	--	--	--	--	--	--	--	--	--	--	--	--	--	--	--	--	--	--	--	--	--	--	--	--	--	--	--	--	--	--	--	--	--	--	--	--	--	--	--	--	--	--	--	--	--	--	--	--	--	--	--	--	--	--	--	--	--	--	--	--	--	--	--	--	--	--	--	--	--	--	--	--	--	--	--	--	--	--	--	--	--	--	--	--	--	--	--	--	--	--	--	--	--	--	--	--	--	--	--	--	--	--	--	--	--	--	--	--	--	--	--	--	--	--	--	--	--	--	--	--	--	--	--	--	--	--	--	--	--	--	--	--	--	--	--	--	--	--	--	--	--	--	--	--	--	--	--	--	--	--	--	--	--	--	--	--	--	--	--	--	--	--	--	--	--	--	--	--	--	--	--	--	--	--	--	--	--	--	--	--	--	--	--	--	--	--	--	--	--	--	--	--	--	--	--	--	--	--	--	--	--	--	--	--	--	--	--	--	--	--	--	--	--	--	--	--	--	--	--	--	--	--	--	--	--	--	--	--	--	--	--	--	--	--	--	--	--	--	--	--	--	--	--	--	--	--	--	--	--	--	--	--	--	--	--	--	--	--	--	--	--	--	--	--	--	--	--	--	--	--	--	--	--	--	--	--	--	--	--	--	--	--	--	--	--	--	--	--	--	--	--	--	--	--	--	--	--	--	--	--	--	--	--	--	--	--	--	--	--	--	--	--	--	--	--	--	--	--	--	--	--	--	--	--	--	--	--	--	--	--	--	--	--	--	--	--	--	--	--	--	--	--	--	--	--	--	--	--	--	--	--	--	--	--	--	--	--	--	--	--	--	--	--	--	--	--	--	--	--	--	--	--	--	--	--	--	--	--	--	--	--	--	--	--	--	--	--	--	--	--	--	--	--	--	--	--	--	--	--	--	--	--	--	--	--	--	--	--	--	--	--	--	--	--	--	--	--	--	--	--	--	--	--	--	--	--	--	--	--	--	--	--	--	--	--	--	--	--	--	--	--	--	--	--	--	--	--	--	--	--	--	--	--	--	--	--	--	--	--	--	--	--	--	--	--	--	--	--	--	--	--	--	--	--	--	--	--	--	--	--	--	--	--	--	--	--	--	--	--	--	--	--	--	--	--	--	--	--	--	--	--	--	--	--	--	--	--	--	--	--	--	--	--	--	--	--	--	--	--	--	--	--	--	--	--	--	--	--	--	--	--	--	--	--	--	--	--	--	--	--	--	--	--	--	--	--	--	--	--	--	--	--	--	--	--	--	--	--	--	--	--	--	--	--	--	--	--	--	--	--	--	--	--	--	--	--	--	--	--	--	--	--	--	--	--	--	--	--	--	--	--	--	--	--	--	--	--	--	--	--	--	--	--	--	--	--	--	--	--	--	--	--	--	--	--	--	--	--	--	--	--	--	--	--	--	--	--	--	--	--	--	--	--	--	--	--	--	--	--	--	--	--	--	--	--	--	--	--	--	--	--	--	--	--	--	--	--	--	--	--	--	--	--	--	--	--	--	--	--	--	--	--	--	--	--	--	--	--	--	--	--	--	--	--	--	--	--	--	--	--	--	--	--	--	--	--	--	--	--	--	--	--	--	--	--	--	--	--	--	--	--	--	--	--	--	--	--	--	--	--	--	--	--	--	--	--	--	--	--	--	--	--	--	--	--	--	--	--	--	--	--	--	--	--	--	--	--	--	--	--	--	--	--	--	--	--	--	--	--	--	--	--	--	--	--	--	--	--	--	--	--	--	--	--	--	--	--	--	--	--	--	--	--	--	--	--	--	--	--	--	--	--	--	--	--	--	--	--	--	--	--	--	--	--	--	--	--	--	--	--	--	--	--	--	--	--	--	--	--	--	--	--	--	--	--	--	--	--	--	--	--	--	--	--	--	--	--	--	--	--	--	--	--	--	--	--	--	--	--	--	--	--	--	--	--	--	--	--	--	--	--	--	--	--	--	--	--	--	--	--	--	--	--	--	--	--	--	--	--	--	--	--	--	--	--	--	--	--	--	--	--	--	--	--	--	--	--	--	--	--	--	--	--	--	--	--	--	--	--	--	--	--

 **THIS PLAN IS TO BE READ IN CONJUNCTION WITH THE CONDITIONS OF DEVELOPMENT CONSENT**
DA2021/2559



NOTES:
1. THE CONCEPTS AND INFORMATION CONTAINED IN THIS DOCUMENT ARE THE COPYRIGHT OF CHENCHOW LITTLE PTY LTD. USE OR COPYING OF THE DOCUMENT IN WHOLE OR PART WITHOUT THE PERMISSION OF CHENCHOW LITTLE PTY LTD CONSTITUTES AN INFRINGEMENT OF COPYRIGHT.
2. THIS DRAWING IS FOR DESIGN CONCEPT ONLY. IT IS NOT TO BE USED FOR A CONSTRUCTION CERTIFICATE APPLICATION, TENDERING OR FOR CONSTRUCTION PURPOSES.
3. ALL LEVEL INFORMATION AND BOUNDARY DIMENSIONS ARE FROM THE SURVEY BY NOTION SURVEY PARTNERS.
4. DO NOT SCALE DRAWINGS.
5. THIS DRAWING IS ONLY FOR USE ON THE SITE AND FOR THE CLIENT IDENTIFIED ON THIS TITLE BLOCK.
6. VERIFY ALL DIMENSIONS AND LEVELS ON SITE PRIOR TO COMMENCEMENT OF WORK. IMMEDIATELY ADVISE ARCHITECT OF ANY DISCREPANCIES. ALLOW FOR ADJUSTMENTS TO SUIT DISCREPANCIES.
7. ALL WORK IS TO BE CARRIED OUT IN ACCORDANCE WITH THE REQUIREMENTS OF LOCAL AUTHORITIES, THE BUILDING CODE OF AUSTRALIA AND RELEVANT AUSTRALIAN STANDARDS.

H	ADDITIONAL INFORMATION FOR DA	3/5/22
G	ISSUED FOR DA	10/12/21
F	ISSUED FOR COORDINATION	9/12/21
E	ISSUED FOR COORDINATION	1/12/21
D	ISSUED FOR CLIENT REVIEW	26/11/21
C	ISSUED FOR COORDINATION	11/11/21
B	ISSUED FOR COORDINATION	2/11/21
A	ISSUED FOR COORDINATION	21/10/21
ISSUE	AMENDMENT	DATE

CHENCHOW LITTLE PTY LTD

SUITE 3, 151 FOVEAUX STREET
SURREY HILLS, NSW, 2010
PH: (02) 9357 4333
E-MAIL: mail@chenchowlittle.com
ARCHITECT'S REG. NO. 6123 (A. CHENCHOW)

DEVELOPMENT APPLICATION NOT FOR CONSTRUCTION

2103 - BROOKVALE
**WAREHOUSE FOR
SWELL TRADING PTY LTD**
8 GROSVENOR PLACE BROOKVALE NSW 2100
LOT 1 DP599064

DRAWING TITLE:
GROUND FLOOR PLAN

DRAWING NUMBER:
A-DA-111

DATE:
May 2022

DRAWN BY:
AH

CHECKED BY:
TCC

SCALE:
1:100 @ A1
1:200 @ A3

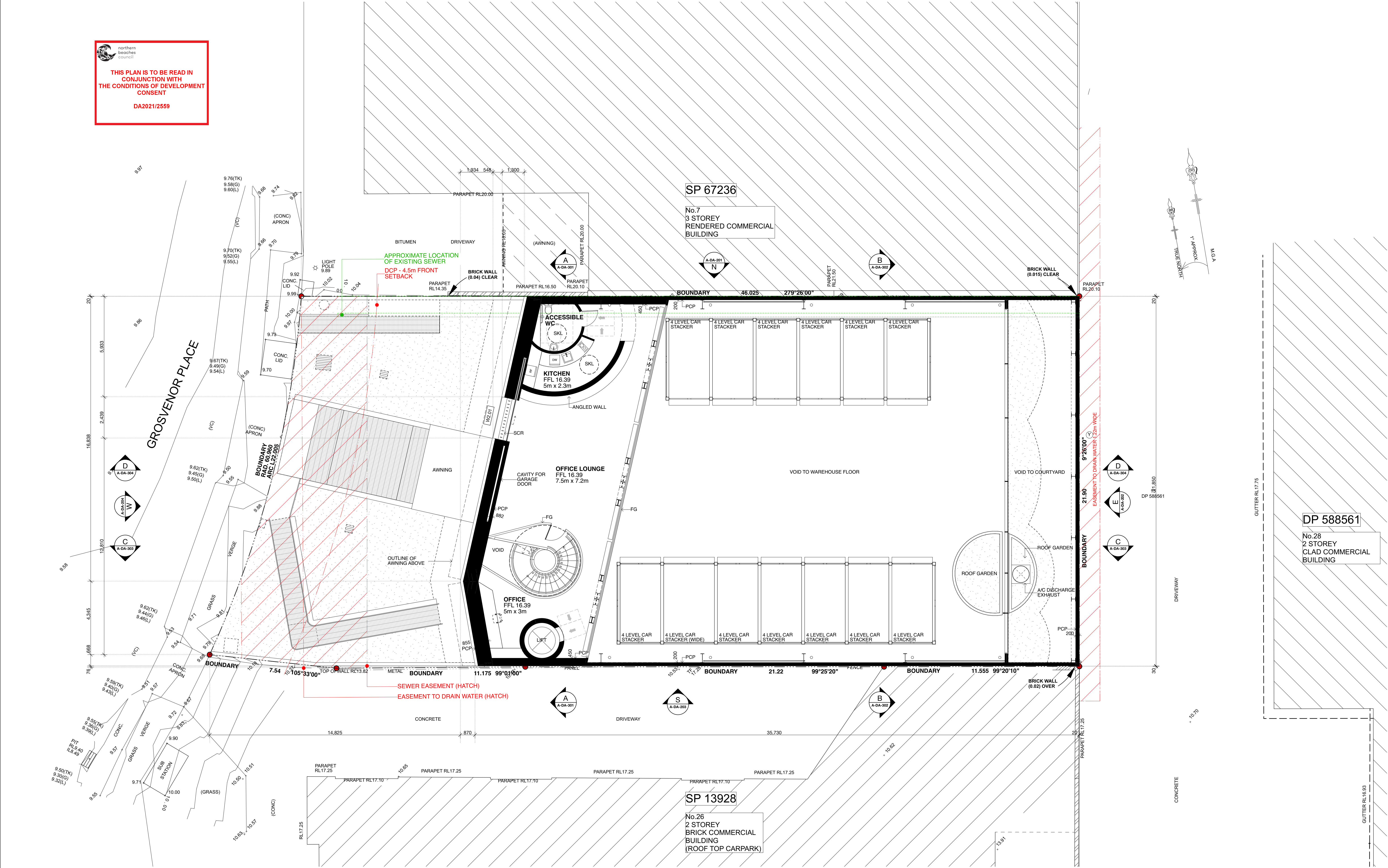
JOB NO:
2103

NO. IN SET:
6

AMENDMENT:
H

0 10 20 30 40 50 60 70 80 90 100mm
FULL SIZE ON ORIGINAL

 **THIS PLAN IS TO BE READ IN CONJUNCTION WITH THE CONDITIONS OF DEVELOPMENT CONSENT**
DA2021/2559



NOTES:

1. THE CONCEPTS AND INFORMATION CONTAINED IN THIS DOCUMENT ARE THE COPYRIGHT OF CHENCHOW LITTLE PTY LTD. USE OR COPYING OF THE DOCUMENT IN WHOLE OR PART WITHOUT THE PERMISSION OF CHENCHOW LITTLE PTY LTD CONSTITUTES AN INFRINGEMENT OF COPYRIGHT.

2. THIS DRAWING IS FOR DESIGN CONCEPT ONLY. IT IS NOT TO BE USED FOR A CONSTRUCTION CERTIFICATE APPLICATION, TENDERING OR FOR CONSTRUCTION PURPOSES.

3. ALL LEVEL INFORMATION AND BOUNDARY DIMENSIONS ARE FROM THE SURVEY BY NORTON SURVEY PARTNERS.

4. DO NOT SCALE DRAWINGS.

5. THIS DRAWING IS ONLY FOR USE ON THE SITE AND FOR THE CLIENT IDENTIFIED ON THIS TITLE BLOCK.

6. VERIFY ALL DIMENSIONS AND LEVELS ON SITE PRIOR TO COMMENCEMENT OF WORK. IMMEDIATELY ADVISE ARCHITECT OF ANY DISCREPANCIES. ALLOW FOR ADJUSTMENTS TO SUIT DISCREPANCIES.

7. ALL WORK IS TO BE CARRIED OUT IN ACCORDANCE WITH THE REQUIREMENTS OF LOCAL AUTHORITIES, THE BUILDING CODE OF AUSTRALIA AND RELEVANT AUSTRALIAN STANDARDS.

G	ISSUED FOR DA	10/12/21
F	ISSUED FOR COORDINATION	9/12/21
E	ISSUED FOR COORDINATION	1/12/21
D	ISSUED FOR CLIENT REVIEW	26/11/21
C	ISSUED FOR COORDINATION	11/11/21
B	ISSUED FOR COORDINATION	2/11/21
A	ISSUED FOR COORDINATION	21/10/21
ISSUE	AMENDMENT	DATE

CHENCHOW LITTLE PTY LTD

SUITE 3, 151 FOVEAUX STREET
SURREY HILLS, NSW, 2010
PH: (02) 9357 4333
E-MAIL: mail@chenchowlittle.com
ARCHITECT'S REG. NO. 6123 (A. CHENCHOW)

**DEVELOPMENT APPLICATION
NOT FOR CONSTRUCTION**

2103 - BROOKVALE

**WAREHOUSE FOR
SWELL TRADING PTY LTD**
8 GROSVENOR PLACE BROOKVALE NSW 2100
LOT 1 DP599064

DRAWING TITLE:

LEVEL 01 FLOOR PLAN

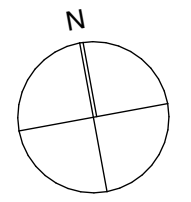
DRAWING NUMBER:
A-DA-112

DATE: December 2021	DRAWN BY: AH	CHECKED BY: TCC
------------------------	-----------------	--------------------

SCALE: 1:100 @ A1 1:200 @ A3	JOB NO: 2103	NO. IN SET: 7	AMENDMENT: G
------------------------------------	-----------------	------------------	-----------------

0 10 20 30 40 50 60 70 80 90 100mm
FULL SIZE ON ORIGINAL

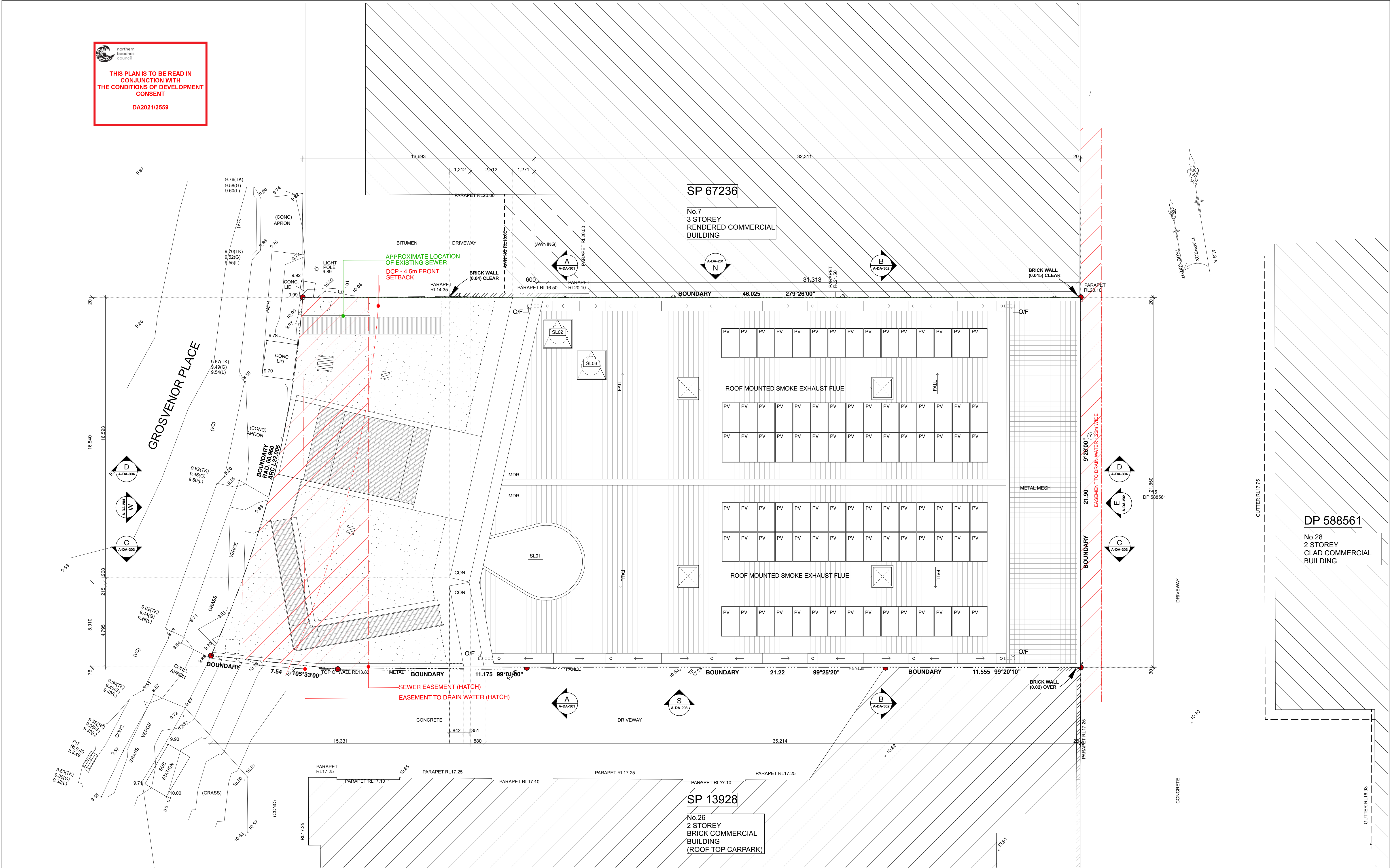
N



northern
beaches
council

THIS PLAN IS TO BE READ IN
CONJUNCTION WITH
THE CONDITIONS OF DEVELOPMENT
CONSENT

DA2021/2559



NOTES:

1. THE CONCEPTS AND INFORMATION CONTAINED IN THIS DOCUMENT ARE THE COPYRIGHT OF CHENCHOW LITTLE PTY LTD. USE OR COPYING OF THE DOCUMENT IN WHOLE OR PART WITHOUT THE PERMISSION OF CHENCHOW LITTLE PTY LTD CONSTITUTES AN INFRINGEMENT OF COPYRIGHT.
2. THIS DRAWING IS FOR DESIGN CONCEPT ONLY. IT IS NOT TO BE USED FOR A CONSTRUCTION CERTIFICATE APPLICATION, TENDERING OR FOR CONSTRUCTION PURPOSES.
3. ALL LEVEL INFORMATION AND BOUNDARY DIMENSIONS ARE FROM THE SURVEY BY NORTON SURVEY PARTNERS.
4. DO NOT SCALE DRAWINGS.
5. THIS DRAWING IS ONLY FOR USE ON THE SITE AND FOR THE CLIENT IDENTIFIED ON THIS TITLE BLOCK.
6. VERIFY ALL DIMENSIONS AND LEVELS ON SITE PRIOR TO COMMENCEMENT OF WORK. IMMEDIATELY ADVISE ARCHITECT OF ANY DISCREPANCIES. ALLOW FOR ADJUSTMENTS TO SUIT DISCREPANCIES.
7. ALL WORK IS TO BE CARRIED OUT IN ACCORDANCE WITH THE REQUIREMENTS OF LOCAL AUTHORITIES, THE BUILDING CODE OF AUSTRALIA AND RELEVANT AUSTRALIAN STANDARDS.

G	ISSUED FOR DA	10/12/21
F	ISSUED FOR COORDINATION	9/12/21
E	ISSUED FOR COORDINATION	1/12/21
D	ISSUED FOR CLIENT REVIEW	26/11/21
C	ISSUED FOR COORDINATION	11/11/21
B	ISSUED FOR COORDINATION	2/11/21
A	ISSUED FOR COORDINATION	21/10/21
ISSUE	AMENDMENT	DATE

CHENCHOW LITTLE PTY LTD

SUITE 3, 151 FOVEAUX STREET
SURRY HILLS, NSW, 2010
PH: (02) 9357 4333
E-MAIL: mail@chenchowlittle.com
ARCHITECT'S REG. NO. 6123 (A. CHENCHOW)

DEVELOPMENT APPLICATION NOT FOR CONSTRUCTION

2103 - BROOKVALE

WAREHOUSE FOR
SWELL TRADING PTY LTD
8 GROSVENOR PLACE BROOKVALE NSW 2100
LOT 1 DP599064

DRAWING TITLE:

ROOF LEVEL

DRAWING NUMBER:

A-DA-113

DATE:
December 2021

DRAWN BY:
AH

CHECKED BY:
TCC

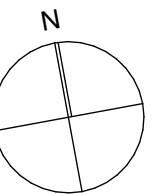
SCALE:
1:100 @ A1
1:200 @ A3

JOB NO:
2103

NO. IN SET:
8

AMENDMENT:
G

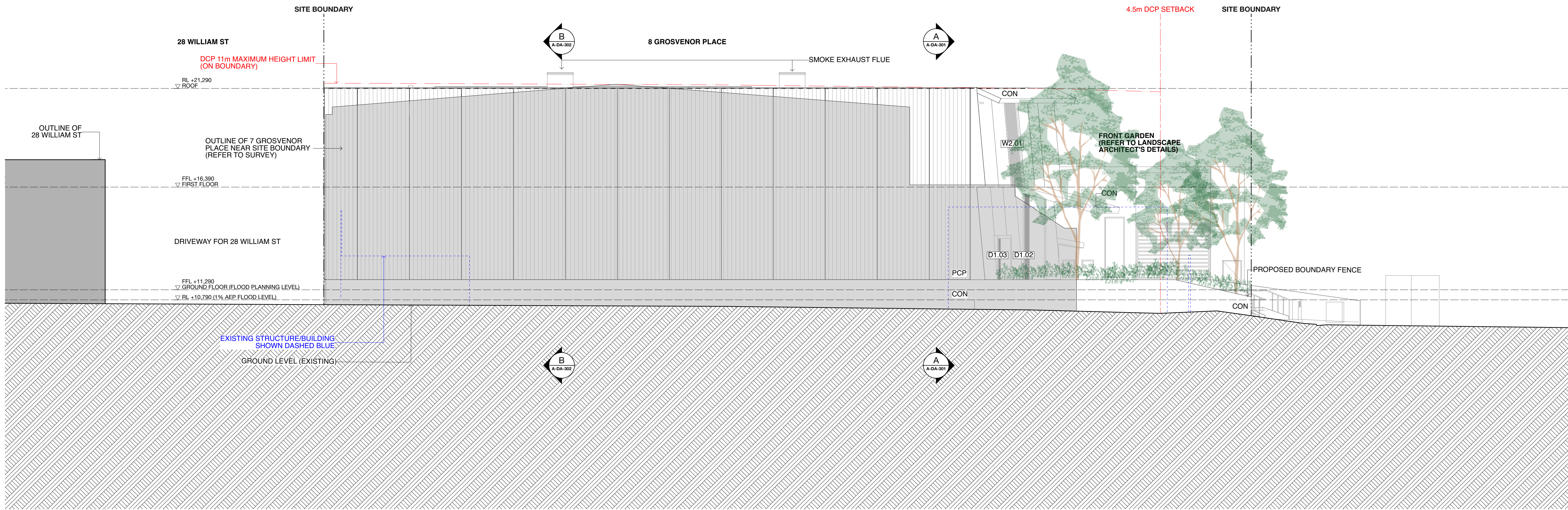
0 10 20 30 40 50 60 70 80 90 100mm
FULL SIZE ON ORIGINAL



 **northern
beaches
council**

**THIS PLAN IS TO BE READ IN
CONJUNCTION WITH
THE CONDITIONS OF DEVELOPMENT
CONSENT**

DA2021/2559



NOTES:

1. THE CONCEPTS AND INFORMATION CONTAINED IN THIS DOCUMENT ARE THE COPYRIGHT OF CHENCHOW LITTLE PTY LTD. USE OR COPYING OF THE DOCUMENT IN WHOLE OR PART WITHOUT THE PERMISSION OF CHENCHOW LITTLE PTY LTD CONSTITUTES AN INFRINGEMENT OF COPYRIGHT.
2. THIS DRAWING IS FOR DESIGN CONCEPT ONLY. IT IS NOT TO BE USED FOR A CONSTRUCTION CERTIFICATE APPLICATION, TENDERING OR FOR CONSTRUCTION PURPOSES.
3. ALL LEVEL INFORMATION AND BOUNDARY DIMENSIONS ARE FROM THE SURVEY BY NORTON SURVEY PARTNERS.
4. DO NOT SCALE DRAWINGS.
5. THIS DRAWING IS ONLY FOR USE ON THE SITE AND FOR THE CLIENT IDENTIFIED ON THIS TITLE BLOCK.
6. VERIFY ALL DIMENSIONS AND LEVELS ON SITE PRIOR TO COMMENCEMENT OF WORK. IMMEDIATELY ADVISE ARCHITECT OF ANY DISCREPANCIES. ALLOW FOR ADJUSTMENTS TO SUIT DISCREPANCIES.
7. ALL WORK IS TO BE CARRIED OUT IN ACCORDANCE WITH THE REQUIREMENTS OF LOCAL AUTHORITIES, THE BUILDING CODE OF AUSTRALIA AND RELEVANT AUSTRALIAN STANDARDS.

G	ADDITIONAL INFORMATION FOR DA	3/5/22
F	ISSUED FOR DA	10/12/21
E	ISSUED FOR COORDINATION	9/12/21
D	ISSUED FOR COORDINATION	1/12/21
C	ISSUED FOR COORDINATION	11/11/21
B	ISSUED FOR COORDINATION	2/11/21
A	ISSUED FOR COORDINATION	21/10/21
ISSUE	AMENDMENT	DATE

CHENCHOW LITTLE PTY LTD

SUITE 3, 151 FOVEAUX STREET
SURRY HILLS, NSW, 2010
PH: (02) 9357 4333
E-MAIL: mail@chenchowlittle.com
ARCHITECT'S REG. NO. 6123 (A. CHENCHOW)

DEVELOPMENT APPLICATION NOT FOR CONSTRUCTION

2103 - BROOKVALE

**WAREHOUSE FOR
SWELL TRADING PTY LTD**
8 GROSVENOR PLACE BROOKVALE NSW 2100
LOT 1 DP599064

DRAWING TITLE:

NORTH ELEVATION

DRAWING NUMBER:

A-DA-201

DATE:
May 2022

DRAWN BY:
AH

CHECKED BY:
TCC

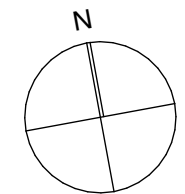
SCALE:
**1:100 @ A1
1:200 @ A3**

JOB NO:
2103

NO. IN SET:
9

AMENDMENT:
G

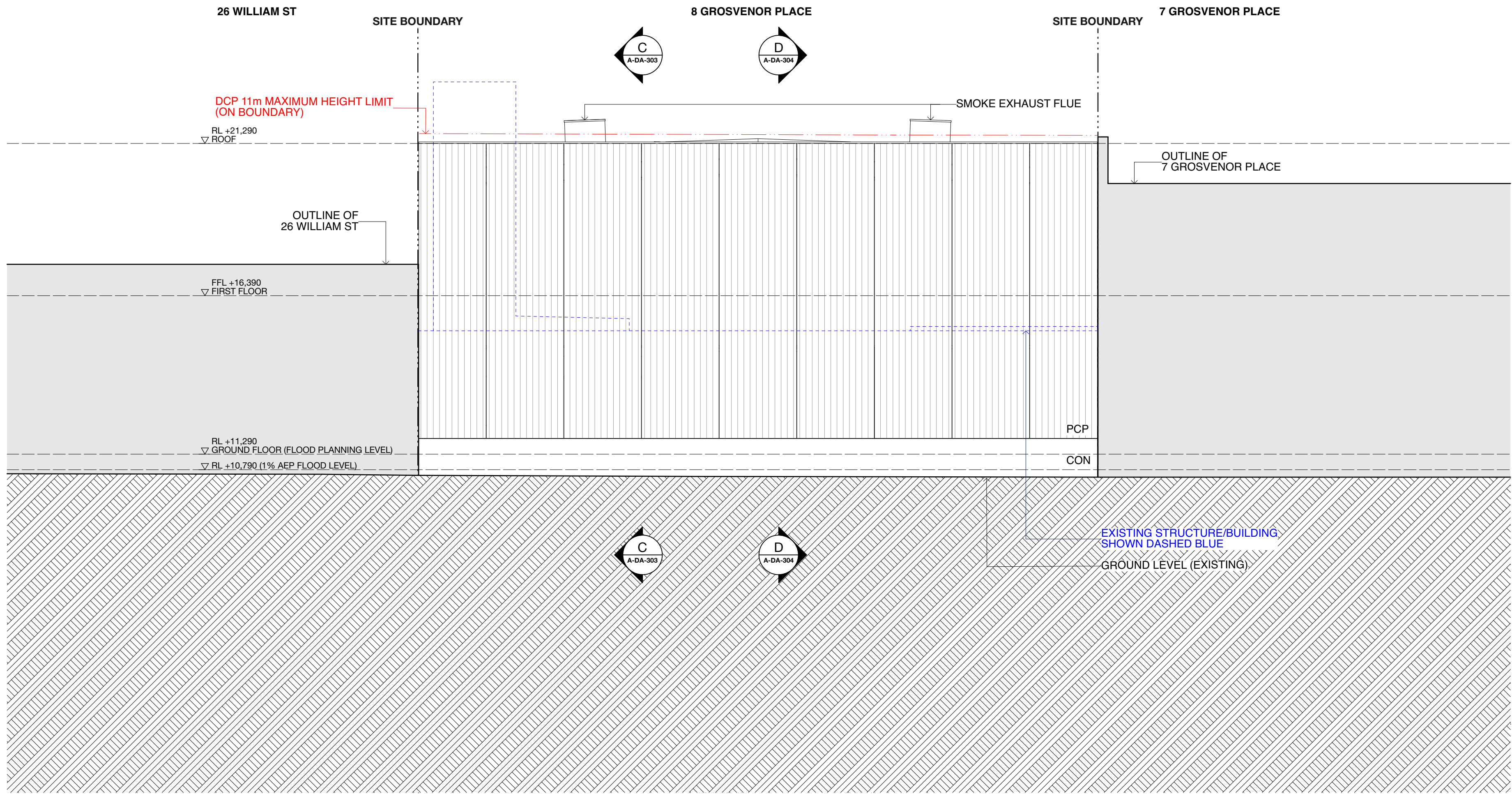
0 10 20 30 40 50 60 70 80 90 100mm
FULL SIZE ON ORIGINAL



northern
beaches
council

THIS PLAN IS TO BE READ IN
CONJUNCTION WITH
THE CONDITIONS OF DEVELOPMENT
CONSENT

DA2021/2559



NOTES:

1. THE CONCEPTS AND INFORMATION CONTAINED IN THIS DOCUMENT ARE THE COPYRIGHT OF CHENCHOW LITTLE PTY LTD. USE OR COPYING OF THE DOCUMENT IN WHOLE OR PART WITHOUT THE PERMISSION OF CHENCHOW LITTLE PTY LTD CONSTITUTES AN INFRINGEMENT OF COPYRIGHT.
2. THIS DRAWING IS FOR DESIGN CONCEPT ONLY. IT IS NOT TO BE USED FOR A CONSTRUCTION CERTIFICATE APPLICATION, TENDERING OR FOR CONSTRUCTION PURPOSES.
3. ALL LEVEL INFORMATION AND BOUNDARY DIMENSIONS ARE FROM THE SURVEY BY NORTON SURVEY PARTNERS.
4. DO NOT SCALE DRAWINGS.
5. THIS DRAWING IS ONLY FOR USE ON THE SITE AND FOR THE CLIENT IDENTIFIED ON THIS TITLE BLOCK.
6. VERIFY ALL DIMENSIONS AND LEVELS ON SITE PRIOR TO COMMENCEMENT OF WORK. IMMEDIATELY ADVISE ARCHITECT OF ANY DISCREPANCIES. ALLOW FOR ADJUSTMENTS TO SUIT DISCREPANCIES.
7. ALL WORK IS TO BE CARRIED OUT IN ACCORDANCE WITH THE REQUIREMENTS OF LOCAL AUTHORITIES, THE BUILDING CODE OF AUSTRALIA AND RELEVANT AUSTRALIAN STANDARDS.

F	ISSUED FOR DA	10/12/21
E	ISSUED FOR COORDINATION	9/12/21
D	ISSUED FOR COORDINATION	1/12/21
C	ISSUED FOR COORDINATION	11/11/21
B	ISSUED FOR COORDINATION	2/11/21
A	ISSUED FOR COORDINATION	21/10/21
ISSUE	AMENDMENT	DATE

CHENCHOW LITTLE PTY LTD

SUITE 3, 151 FOVEAUX STREET
SURRY HILLS, NSW, 2010
PH: (02) 9357 4333
E-MAIL: mail@chenchowlittle.com
ARCHITECT'S REG. NO. 6123 (A. CHENCHOW)

DEVELOPMENT APPLICATION NOT FOR CONSTRUCTION

2103 - BROOKVALE

**WAREHOUSE FOR
SWELL TRADING PTY LTD**
8 GROSVENOR PLACE BROOKVALE NSW 2100
LOT 1 DP599064

DRAWING TITLE:

EAST ELEVATIONS

DRAWING NUMBER:

A-DA-202

DATE:
December 2021

DRAWN BY:
AH

CHECKED BY:
TCC

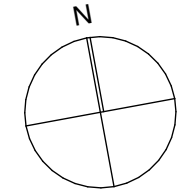
SCALE:
**1:100 @ A1
1:200 @ A3**

JOB NO:
2103

NO. IN SET:
10

AMENDMENT:
F

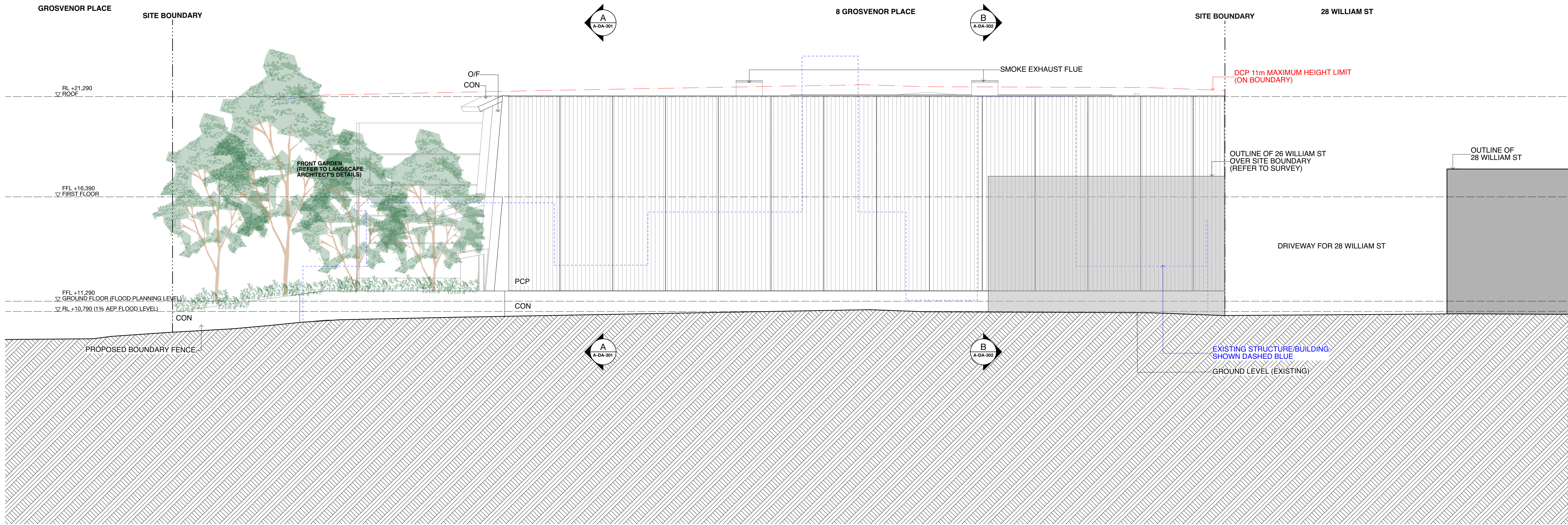
0 10 20 30 40 50 60 70 80 90 100mm
FULL SIZE ON ORIGINAL



 northern beaches council

THIS PLAN IS TO BE READ IN CONJUNCTION WITH THE CONDITIONS OF DEVELOPMENT CONSENT

DA2021/2559



NOTES:

1. THE CONCEPTS AND INFORMATION CONTAINED IN THIS DOCUMENT ARE THE COPYRIGHT OF CHENCHOW LITTLE PTY LTD. USE OR COPYING OF THE DOCUMENT IN WHOLE OR PART WITHOUT THE PERMISSION OF CHENCHOW LITTLE PTY LTD CONSTITUTES AN INFRINGEMENT OF COPYRIGHT.

2. THIS DRAWING IS FOR DESIGN CONCEPT ONLY. IT IS NOT TO BE USED FOR A CONSTRUCTION CERTIFICATE APPLICATION, TENDERING OR FOR CONSTRUCTION PURPOSES.

3. ALL LEVEL INFORMATION AND BOUNDARY DIMENSIONS ARE FROM THE SURVEY BY NORTON SURVEY PARTNERS.

4. DO NOT SCALE DRAWINGS.

5. THIS DRAWING IS ONLY FOR USE ON THE SITE AND FOR THE CLIENT IDENTIFIED ON THIS TITLE BLOCK.

6. VERIFY ALL DIMENSIONS AND LEVELS ON SITE PRIOR TO COMMENCEMENT OF WORK. IMMEDIATELY ADVISE ARCHITECT OF ANY DISCREPANCIES. ALLOW FOR ADJUSTMENTS TO SUIT DISCREPANCIES.

7. ALL WORK IS TO BE CARRIED OUT IN ACCORDANCE WITH THE REQUIREMENTS OF LOCAL AUTHORITIES, THE BUILDING CODE OF AUSTRALIA AND RELEVANT AUSTRALIAN STANDARDS.

G	ADDITIONAL INFORMATION FOR DA	3/5/22
F	ISSUED FOR DA	10/12/21
E	ISSUED FOR COORDINATION	9/12/21
D	ISSUED FOR COORDINATION	1/12/21
C	ISSUED FOR COORDINATION	11/11/21
B	ISSUED FOR COORDINATION	2/11/21
A	ISSUED FOR COORDINATION	21/10/21
ISSUE	AMENDMENT	DATE

CHENCHOW LITTLE PTY LTD

SUITE 3, 151 FOVEAUX STREET
SURRY HILLS, NSW, 2010
PH: (02) 9357 4333
E-MAIL: mail@chenchowlittle.com
ARCHITECT'S REG. NO. 6123 (A. CHENCHOW)

DEVELOPMENT APPLICATION NOT FOR CONSTRUCTION

2103 - BROOKVALE

**WAREHOUSE FOR
SWELL TRADING PTY LTD**
8 GROSVENOR PLACE BROOKVALE NSW 2100
LOT 1 DP599064

DRAWING TITLE:

SOUTH ELEVATION

DRAWING NUMBER:

A-DA-203

DATE:
May 2022

DRAWN BY:
AH

CHECKED BY:
TCC

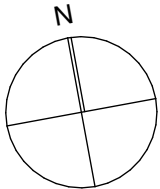
SCALE:
**1:100 @ A1
1:200 @ A3**

JOB NO:
2103

NO. IN SET:
11

AMENDMENT:
G

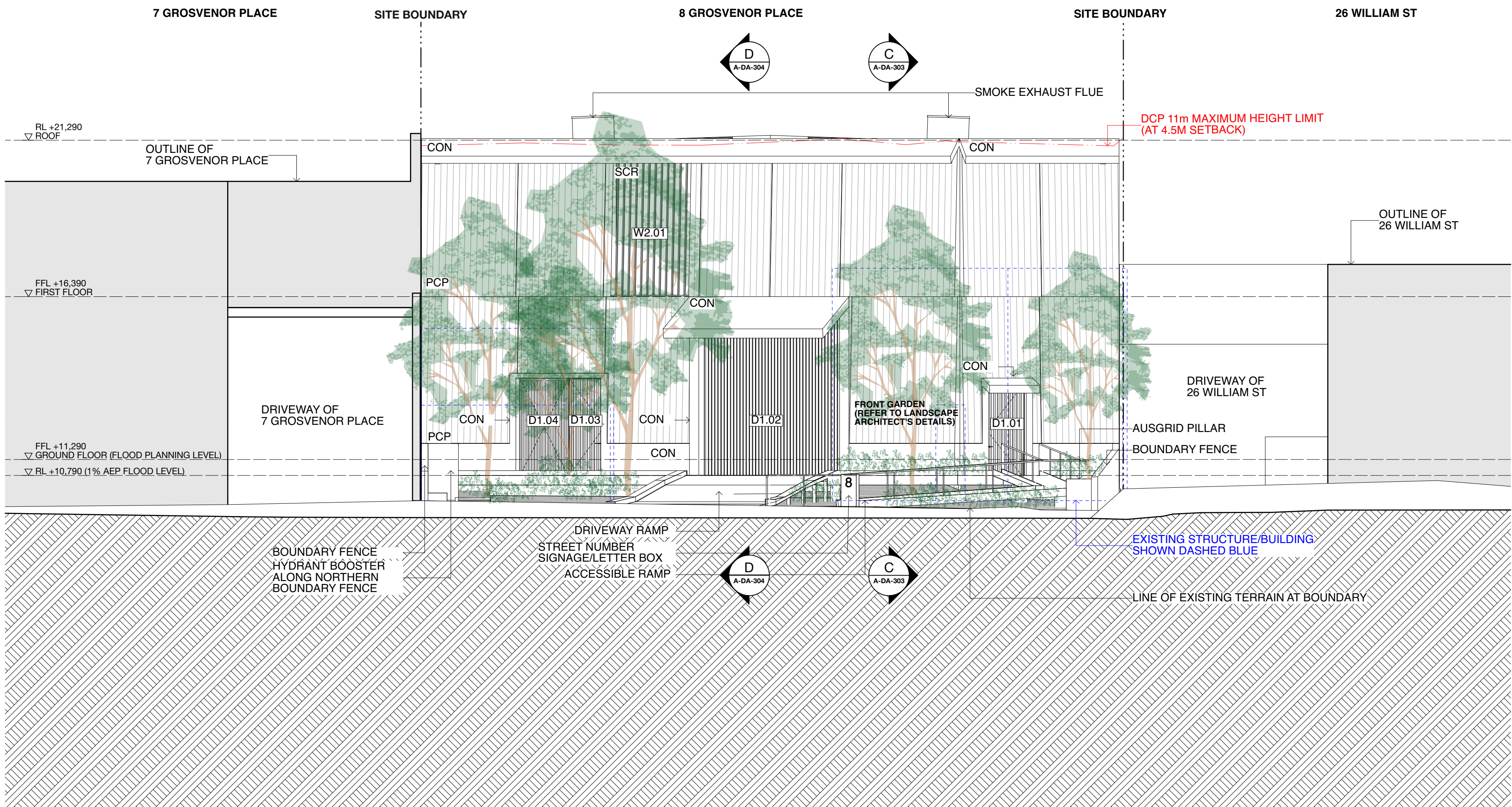
0 10 20 30 40 50 60 70 80 90 100mm
FULL SIZE ON ORIGINAL



 **northern
beaches
council**

**THIS PLAN IS TO BE READ IN
CONJUNCTION WITH
THE CONDITIONS OF DEVELOPMENT
CONSENT**

DA2021/2559



NOTES:

1. THE CONCEPTS AND INFORMATION CONTAINED IN THIS DOCUMENT ARE THE COPYRIGHT OF CHENCHOW LITTLE PTY LTD. USE OR COPYING OF THE DOCUMENT IN WHOLE OR PART WITHOUT THE PERMISSION OF CHENCHOW LITTLE PTY LTD CONSTITUTES AN INFRINGEMENT OF COPYRIGHT.

2. THIS DRAWING IS FOR DESIGN CONCEPT ONLY. IT IS NOT TO BE USED FOR A CONSTRUCTION CERTIFICATE APPLICATION, TENDERING OR FOR CONSTRUCTION PURPOSES.

3. ALL LEVEL INFORMATION AND BOUNDARY DIMENSIONS ARE FROM THE SURVEY BY NORTON SURVEY PARTNERS.

4. DO NOT SCALE DRAWINGS.

5. THIS DRAWING IS ONLY FOR USE ON THE SITE AND FOR THE CLIENT IDENTIFIED ON THIS TITLE BLOCK.

6. VERIFY ALL DIMENSIONS AND LEVELS ON SITE PRIOR TO COMMENCEMENT OF WORK. IMMEDIATELY ADVISE ARCHITECT OF ANY DISCREPANCIES. ALLOW FOR ADJUSTMENTS TO SUIT DISCREPANCIES.

7. ALL WORK IS TO BE CARRIED OUT IN ACCORDANCE WITH THE REQUIREMENTS OF LOCAL AUTHORITIES, THE BUILDING CODE OF AUSTRALIA AND RELEVANT AUSTRALIAN STANDARDS.

G	ADDITIONAL INFORMATION FOR DA	3/5/22
F	ISSUED FOR DA	10/12/21
E	ISSUED FOR COORDINATION	9/12/21
D	ISSUED FOR COORDINATION	1/12/21
C	ISSUED FOR COORDINATION	11/11/21
B	ISSUED FOR COORDINATION	2/11/21
A	ISSUED FOR COORDINATION	21/10/21
ISSUE	AMENDMENT	DATE

CHENCHOW LITTLE PTY LTD

SUITE 3, 151 FOVEAUX STREET
SURRY HILLS, NSW, 2010
PH: (02) 9357 4333
E-MAIL: mail@chenchowlittle.com
ARCHITECT'S REG. NO. 6123 (A. CHENCHOW)

DEVELOPMENT APPLICATION NOT FOR CONSTRUCTION

2103 - BROOKVALE

**WAREHOUSE FOR
SWELL TRADING PTY LTD**
8 GROSVENOR PLACE BROOKVALE NSW 2100
LOT 1 DP599064

DRAWING TITLE:

WEST ELEVATIONS

DRAWING NUMBER:

A-DA-204

DATE:
May 2022

DRAWN BY:
AH

CHECKED BY:
TCC

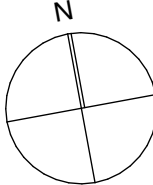
SCALE:
**1:100 @ A1
1:200 @ A3**

JOB NO:
2103

NO. IN SET:
12

AMENDMENT:
G

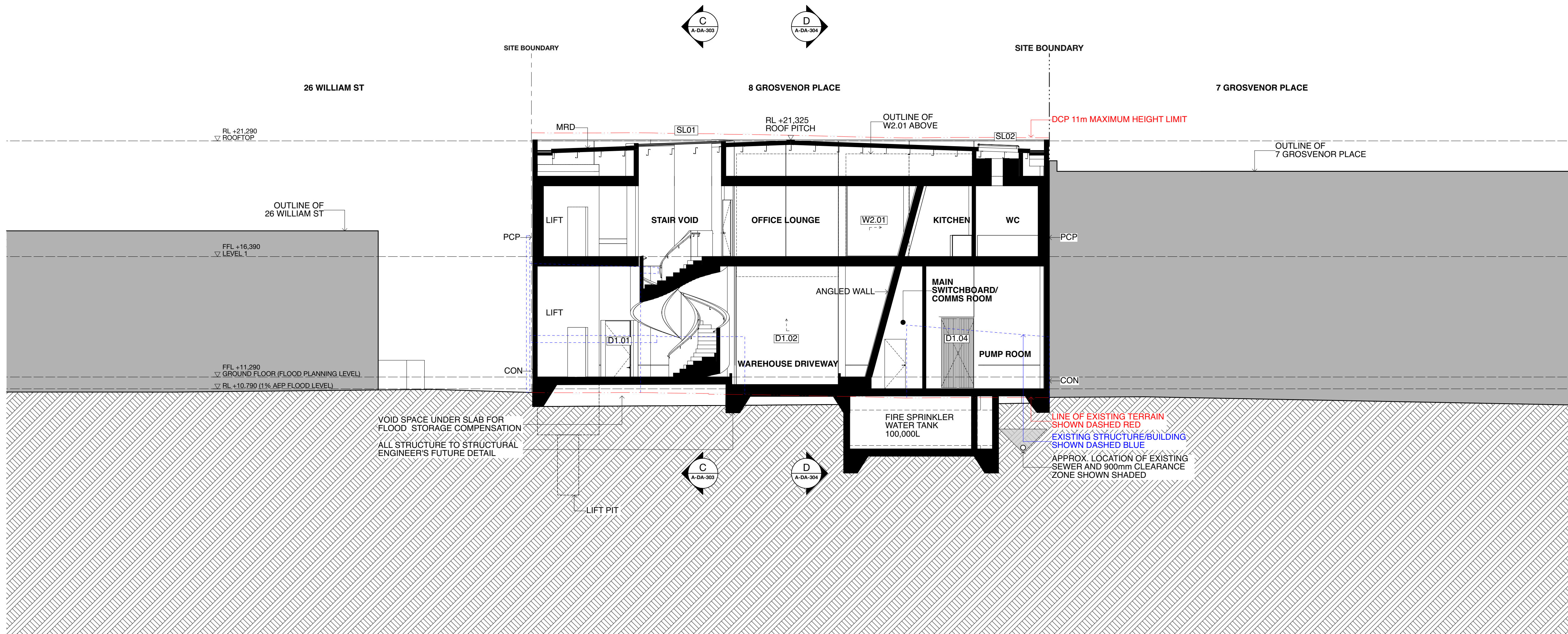
0 10 20 30 40 50 60 70 80 90 100mm
FULL SIZE ON ORIGINAL



 northern
beaches
council

THIS PLAN IS TO BE READ IN
CONJUNCTION WITH
THE CONDITIONS OF DEVELOPMENT
CONSENT

DA2021/2559



NOTES:

1. THE CONCEPTS AND INFORMATION CONTAINED IN THIS DOCUMENT ARE THE COPYRIGHT OF CHENCHOW LITTLE PTY LTD. USE OR COPYING OF THE DOCUMENT IN WHOLE OR PART WITHOUT THE PERMISSION OF CHENCHOW LITTLE PTY LTD CONSTITUTES AN INFRINGEMENT OF COPYRIGHT.
2. THIS DRAWING IS FOR DESIGN CONCEPT ONLY. IT IS NOT TO BE USED FOR A CONSTRUCTION CERTIFICATE APPLICATION, TENDERING OR FOR CONSTRUCTION PURPOSES.
3. ALL LEVEL INFORMATION AND BOUNDARY DIMENSIONS ARE FROM THE SURVEY BY NORTON SURVEY PARTNERS.
4. DO NOT SCALE DRAWINGS.
5. THIS DRAWING IS ONLY FOR USE ON THE SITE AND FOR THE CLIENT IDENTIFIED ON THIS TITLE BLOCK.
6. VERIFY ALL DIMENSIONS AND LEVELS ON SITE PRIOR TO COMMENCEMENT OF WORK. IMMEDIATELY ADVISE ARCHITECT OF ANY DISCREPANCIES. ALLOW FOR ADJUSTMENTS TO SUIT DISCREPANCIES.
7. ALL WORK IS TO BE CARRIED OUT IN ACCORDANCE WITH THE REQUIREMENTS OF LOCAL AUTHORITIES, THE BUILDING CODE OF AUSTRALIA AND RELEVANT AUSTRALIAN STANDARDS.

G	ADDITIONAL INFORMATION FOR DA	3/5/22
F	ISSUED FOR DA	10/12/21
E	ISSUED FOR COORDINATION	9/12/21
D	ISSUED FOR COORDINATION	1/12/21
C	ISSUED FOR COORDINATION	11/11/21
B	ISSUED FOR COORDINATION	2/11/21
A	ISSUED FOR COORDINATION	21/10/21
ISSUE	AMENDMENT	DATE

CHENCHOW LITTLE PTY LTD

SUITE 3, 151 FOVEAUX STREET
SURRY HILLS, NSW, 2010
PH: (02) 9357 4333
E-MAIL: mail@chenchowlittle.com
ARCHITECT'S REG. NO. 6123 (A. CHENCHOW)

DEVELOPMENT APPLICATION NOT FOR CONSTRUCTION

2103 - BROOKVALE

**WAREHOUSE FOR
SWELL TRADING PTY LTD**
8 GROSVENOR PLACE BROOKVALE NSW 2100
LOT 1 DP599064

DRAWING TITLE:

SECTIONS A-A

DRAWING NUMBER:

A-DA-301

DATE:
May 2022

DRAWN BY:
AH

CHECKED BY:
TCC

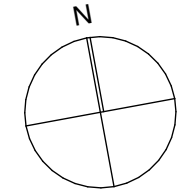
SCALE:
**1:100 @ A1
1:200 @ A3**

JOB NO:
2103

NO. IN SET:
13

AMENDMENT:
G

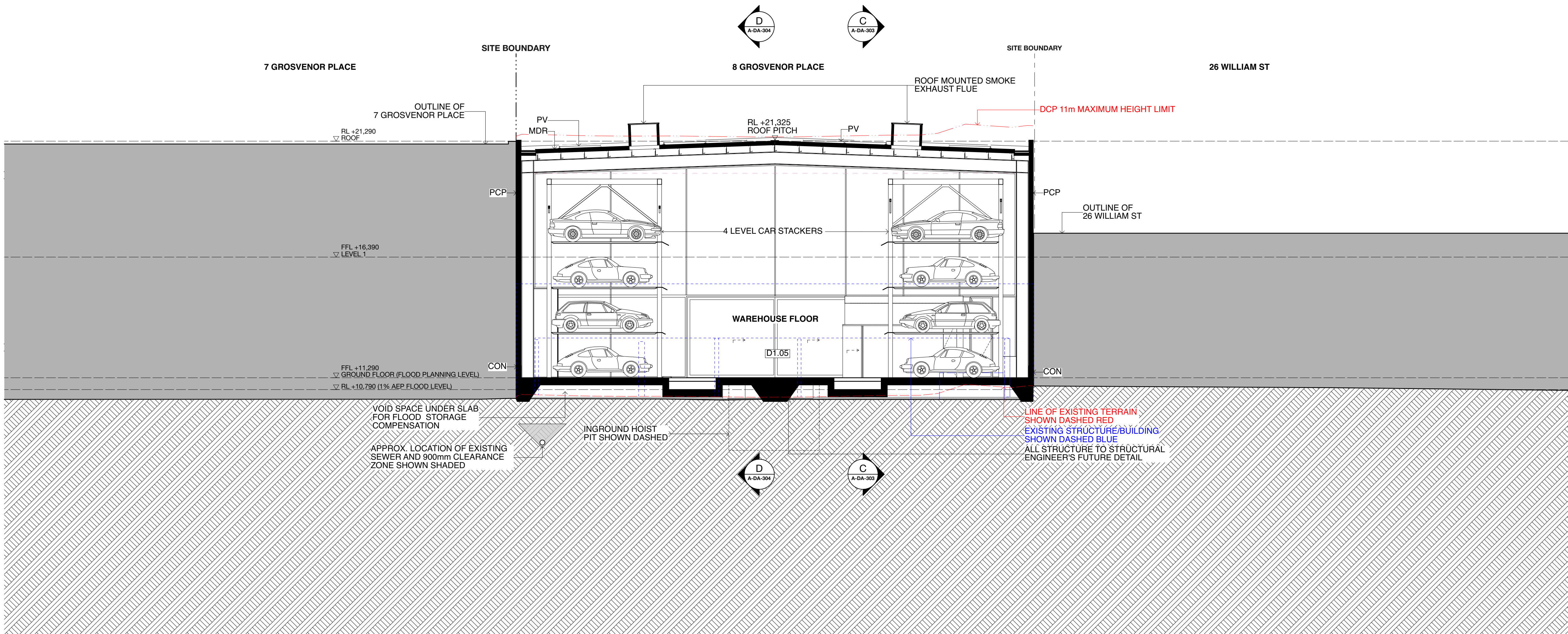
0 10 20 30 40 50 60 70 80 90 100mm
FULL SIZE ON ORIGINAL



 northern
beaches
council

THIS PLAN IS TO BE READ IN
CONJUNCTION WITH
THE CONDITIONS OF DEVELOPMENT
CONSENT

DA2021/2559



NOTES:

1. THE CONCEPTS AND INFORMATION CONTAINED IN THIS DOCUMENT ARE THE COPYRIGHT OF CHENCHOW LITTLE PTY LTD. USE OR COPYING OF THE DOCUMENT IN WHOLE OR PART WITHOUT THE PERMISSION OF CHENCHOW LITTLE PTY LTD CONSTITUTES AN INFRINGEMENT OF COPYRIGHT.
2. THIS DRAWING IS FOR DESIGN CONCEPT ONLY. IT IS NOT TO BE USED FOR A CONSTRUCTION CERTIFICATE APPLICATION, TENDERING OR FOR CONSTRUCTION PURPOSES.
3. ALL LEVEL INFORMATION AND BOUNDARY DIMENSIONS ARE FROM THE SURVEY BY NORTON SURVEY PARTNERS.
4. DO NOT SCALE DRAWINGS.
5. THIS DRAWING IS ONLY FOR USE ON THE SITE AND FOR THE CLIENT IDENTIFIED ON THIS TITLE BLOCK.
6. VERIFY ALL DIMENSIONS AND LEVELS ON SITE PRIOR TO COMMENCEMENT OF WORK. IMMEDIATELY ADVISE ARCHITECT OF ANY DISCREPANCIES. ALLOW FOR ADJUSTMENTS TO SUIT DISCREPANCIES.
7. ALL WORK IS TO BE CARRIED OUT IN ACCORDANCE WITH THE REQUIREMENTS OF LOCAL AUTHORITIES, THE BUILDING CODE OF AUSTRALIA AND RELEVANT AUSTRALIAN STANDARDS.

G	ADDITIONAL INFORMATION FOR DA	3/5/22
F	ISSUED FOR DA	10/12/21
E	ISSUED FOR COORDINATION	9/12/21
D	ISSUED FOR COORDINATION	1/12/21
C	ISSUED FOR COORDINATION	11/11/21
B	ISSUED FOR COORDINATION	2/11/21
A	ISSUED FOR COORDINATION	21/10/21
ISSUE	AMENDMENT	DATE

CHENCHOW LITTLE PTY LTD

SUITE 3, 151 FOVEAUX STREET
SURRY HILLS, NSW, 2010
PH: (02) 9357 4333
E-MAIL: mail@chenchowlittle.com
ARCHITECT'S REG. NO. 6123 (A. CHENCHOW)

DEVELOPMENT APPLICATION NOT FOR CONSTRUCTION

2103 - BROOKVALE

**WAREHOUSE FOR
SWELL TRADING PTY LTD**
8 GROSVENOR PLACE BROOKVALE NSW 2100
LOT 1 DP599064

DRAWING TITLE:

SECTIONS B-B

DRAWING NUMBER:

A-DA-302

DATE:
May 2022

DRAWN BY:
AH

CHECKED BY:
TCC

SCALE:

1:100 @ A1

1:200 @ A3

JOB NO:

2103

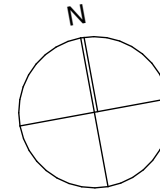
NO. IN SET:

14

AMENDMENT:

G

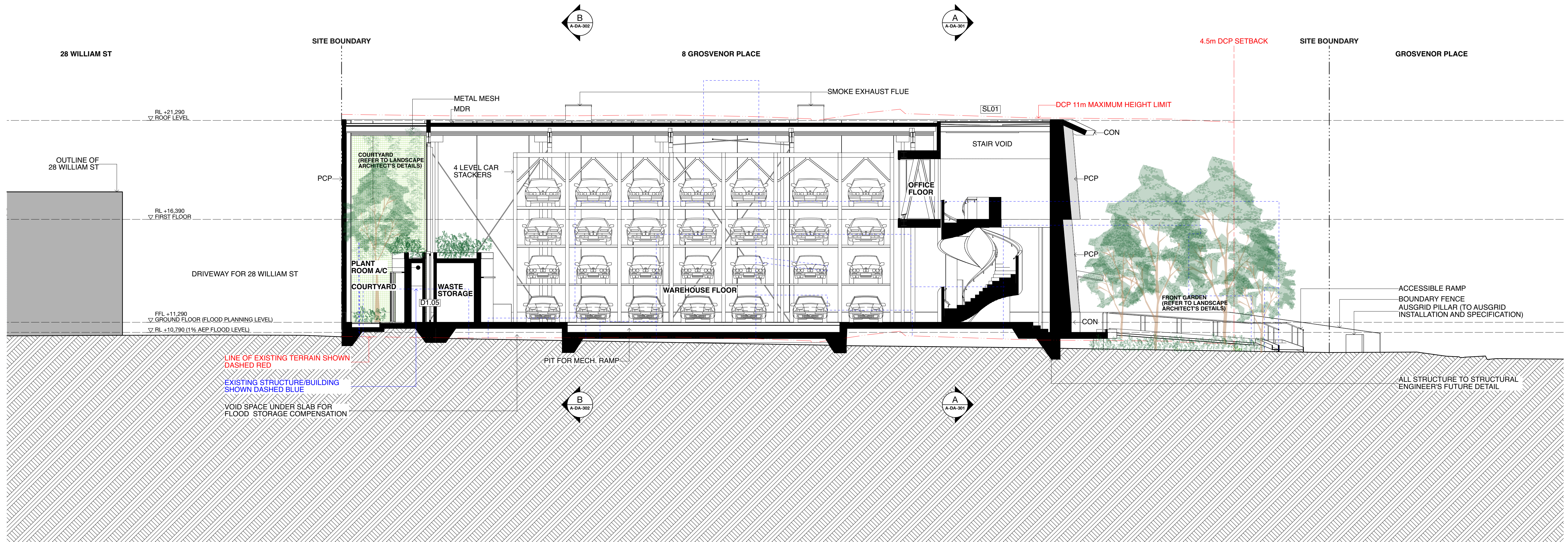
0 10 20 30 40 50 60 70 80 90 100mm
FULL SIZE ON ORIGINAL



 northern
beaches
council

THIS PLAN IS TO BE READ IN
CONJUNCTION WITH
THE CONDITIONS OF DEVELOPMENT
CONSENT

DA2021/2559



NOTES:

1. THE CONCEPTS AND INFORMATION CONTAINED IN THIS DOCUMENT ARE THE COPYRIGHT OF CHENCHOW LITTLE PTY LTD. USE OR COPYING OF THE DOCUMENT IN WHOLE OR PART WITHOUT THE PERMISSION OF CHENCHOW LITTLE PTY LTD CONSTITUTES AN INFRINGEMENT OF COPYRIGHT.
2. THIS DRAWING IS FOR DESIGN CONCEPT ONLY. IT IS NOT TO BE USED FOR A CONSTRUCTION CERTIFICATE APPLICATION, TENDERING OR FOR CONSTRUCTION PURPOSES.
3. ALL LEVEL INFORMATION AND BOUNDARY DIMENSIONS ARE FROM THE SURVEY BY NORTON SURVEY PARTNERS.
4. DO NOT SCALE DRAWINGS.
5. THIS DRAWING IS ONLY FOR USE ON THE SITE AND FOR THE CLIENT IDENTIFIED ON THIS TITLE BLOCK.
6. VERIFY ALL DIMENSIONS AND LEVELS ON SITE PRIOR TO COMMENCEMENT OF WORK. IMMEDIATELY ADVISE ARCHITECT OF ANY DISCREPANCIES. ALLOW FOR ADJUSTMENTS TO SUIT DISCREPANCIES.
7. ALL WORK IS TO BE CARRIED OUT IN ACCORDANCE WITH THE REQUIREMENTS OF LOCAL AUTHORITIES, THE BUILDING CODE OF AUSTRALIA AND RELEVANT AUSTRALIAN STANDARDS.

G	ADDITIONAL INFORMATION FOR DA	3/5/22
F	ISSUED FOR DA	10/12/21
E	ISSUED FOR COORDINATION	9/12/21
D	ISSUED FOR COORDINATION	1/12/21
C	ISSUED FOR COORDINATION	11/11/21
B	ISSUED FOR COORDINATION	2/11/21
A	ISSUED FOR COORDINATION	21/10/21
ISSUE	AMENDMENT	DATE

CHENCHOW LITTLE PTY LTD

SUITE 3, 151 FOVEAUX STREET
SURRY HILLS, NSW, 2010
PH: (02) 9357 4333
E-MAIL: mail@chenchowlittle.com
ARCHITECT'S REG. NO. 6123 (A. CHENCHOW)

DEVELOPMENT APPLICATION NOT FOR CONSTRUCTION

2103 - BROOKVALE

**WAREHOUSE FOR
SWELL TRADING PTY LTD**
8 GROSVENOR PLACE BROOKVALE NSW 2100
LOT 1 DP599064

DRAWING TITLE:

SECTIONS C-C

DRAWING NUMBER:

A-DA-303

DATE:
May 2022

DRAWN BY:
AH

CHECKED BY:
TCC

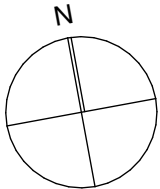
SCALE:
1:100 @ A1
1:200 @ A3

JOB NO:
2103

NO. IN SET:
15

AMENDMENT:
G

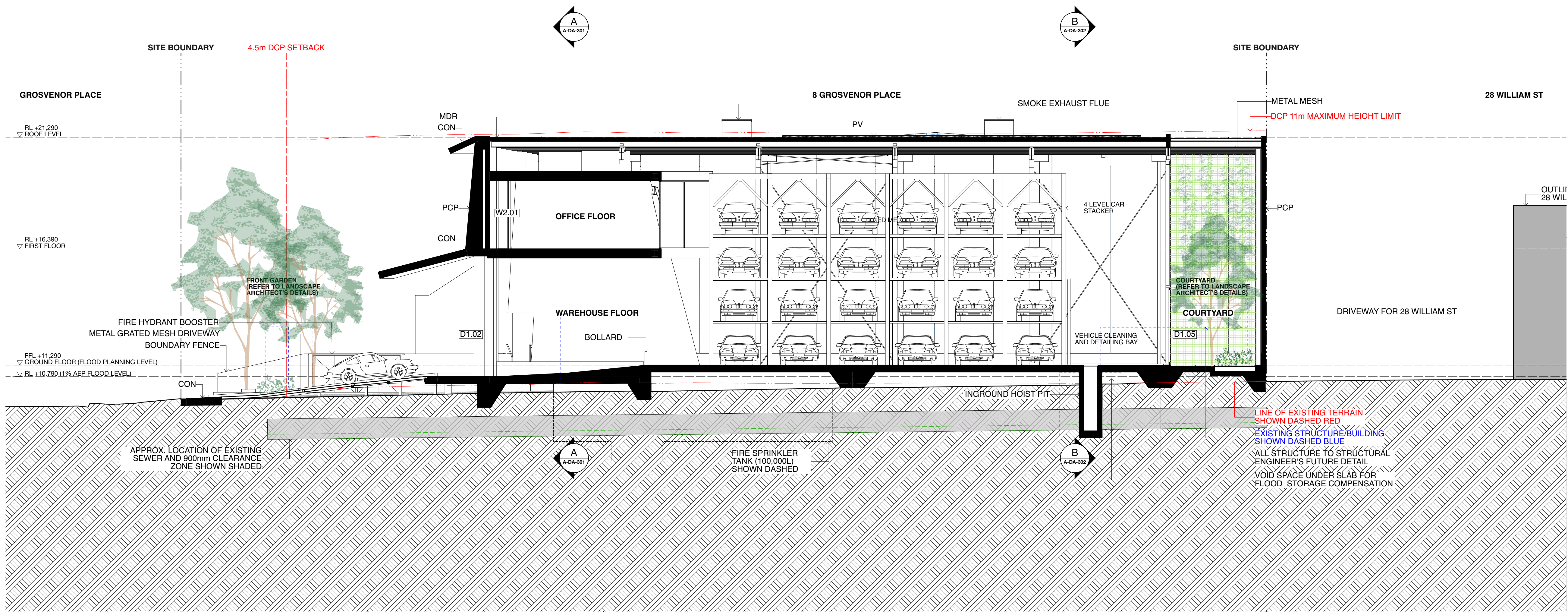
0 10 20 30 40 50 60 70 80 90 100mm
FULL SIZE ON ORIGINAL



 northern
beaches
council

THIS PLAN IS TO BE READ IN
CONJUNCTION WITH
THE CONDITIONS OF DEVELOPMENT
CONSENT

DA2021/2559



NOTES:

- THE CONCEPTS AND INFORMATION CONTAINED IN THIS DOCUMENT ARE THE COPYRIGHT OF CHENCHOW LITTLE PTY LTD. USE OR COPYING OF THE DOCUMENT IN WHOLE OR PART WITHOUT THE PERMISSION OF CHENCHOW LITTLE PTY LTD CONSTITUTES AN INFRINGEMENT OF COPYRIGHT.
- THIS DRAWING IS FOR DESIGN CONCEPT ONLY. IT IS NOT TO BE USED FOR A CONSTRUCTION CERTIFICATE APPLICATION, TENDERING OR FOR CONSTRUCTION PURPOSES.
- ALL LEVEL INFORMATION AND BOUNDARY DIMENSIONS ARE FROM THE SURVEY BY NORTON SURVEY PARTNERS.
- DO NOT SCALE DRAWINGS.
- THIS DRAWING IS ONLY FOR USE ON THE SITE AND FOR THE CLIENT IDENTIFIED ON THIS TITLE BLOCK.
- VERIFY ALL DIMENSIONS AND LEVELS ON SITE PRIOR TO COMMENCEMENT OF WORK. IMMEDIATELY ADVISE ARCHITECT OF ANY DISCREPANCIES. ALLOW FOR ADJUSTMENTS TO SUIT DISCREPANCIES.
- ALL WORK IS TO BE CARRIED OUT IN ACCORDANCE WITH THE REQUIREMENTS OF LOCAL AUTHORITIES, THE BUILDING CODE OF AUSTRALIA AND RELEVANT AUSTRALIAN STANDARDS.

G	ADDITIONAL INFORMATION FOR DA	3/5/22
F	ISSUED FOR DA	10/12/21
E	ISSUED FOR COORDINATION	9/12/21
D	ISSUED FOR COORDINATION	1/12/21
C	ISSUED FOR COORDINATION	11/11/21
B	ISSUED FOR COORDINATION	2/11/21
A	ISSUED FOR COORDINATION	21/10/21
ISSUE	AMENDMENT	DATE

CHENCHOW LITTLE PTY LTD

SUITE 3, 151 FOVEAUX STREET
SURRY HILLS, NSW, 2010
PH: (02) 9357 4333
E-MAIL: mail@chenchowlittle.com
ARCHITECT'S REG. NO. 6123 (A. CHENCHOW)

DEVELOPMENT APPLICATION NOT FOR CONSTRUCTION

2103 - BROOKVALE

**WAREHOUSE FOR
SWELL TRADING PTY LTD**
8 GROSVENOR PLACE BROOKVALE NSW 2100
LOT 1 DP599064

DRAWING TITLE:

SECTIONS D-D

DRAWING NUMBER:

A-DA-304

DATE:
May 2022

DRAWN BY:
AH

CHECKED BY:
TCC

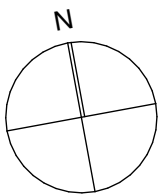
SCALE:
**1:100 @ A1
1:200 @ A3**

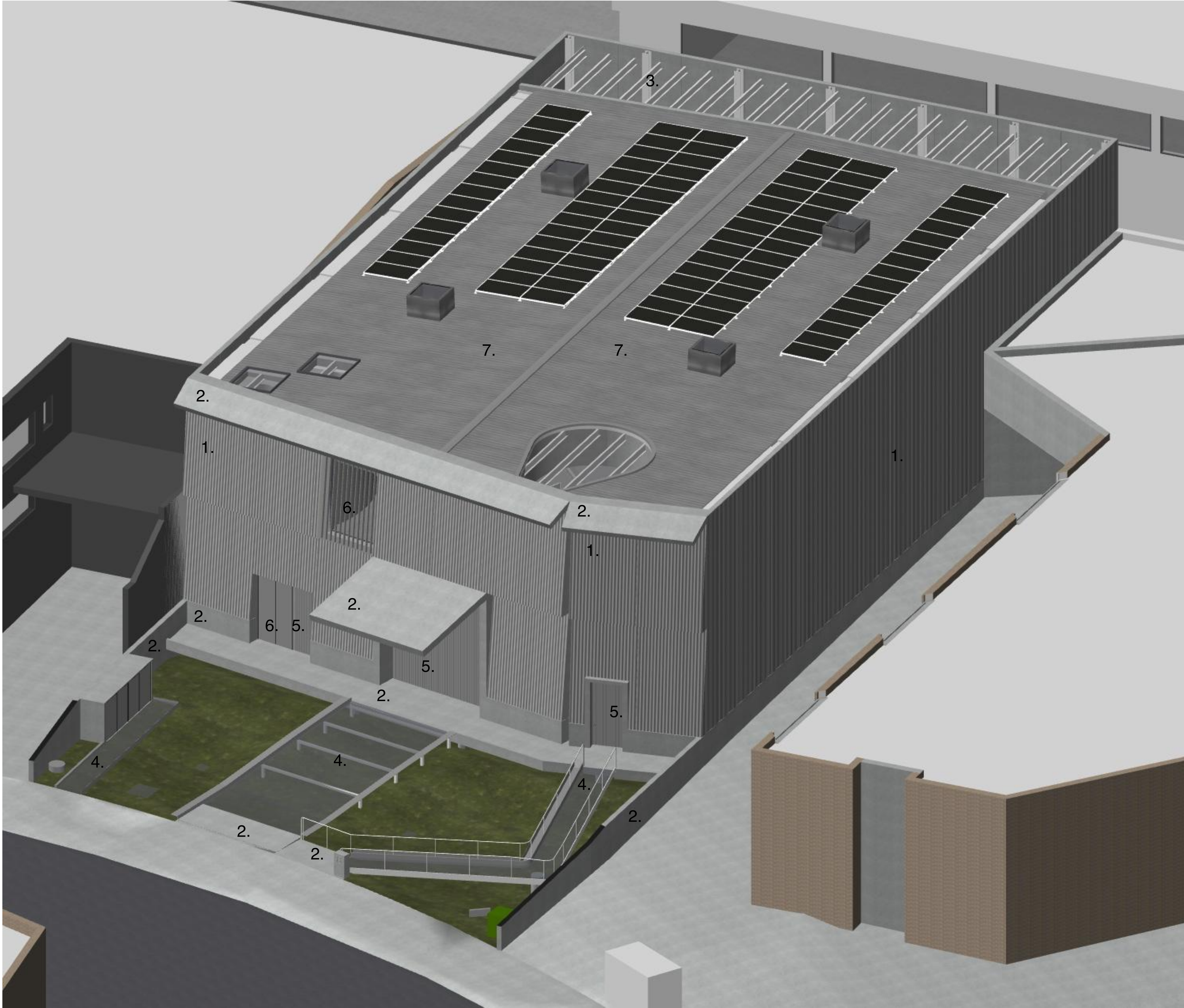
JOB NO:
2103

NO. IN SET:
16

AMENDMENT:
G

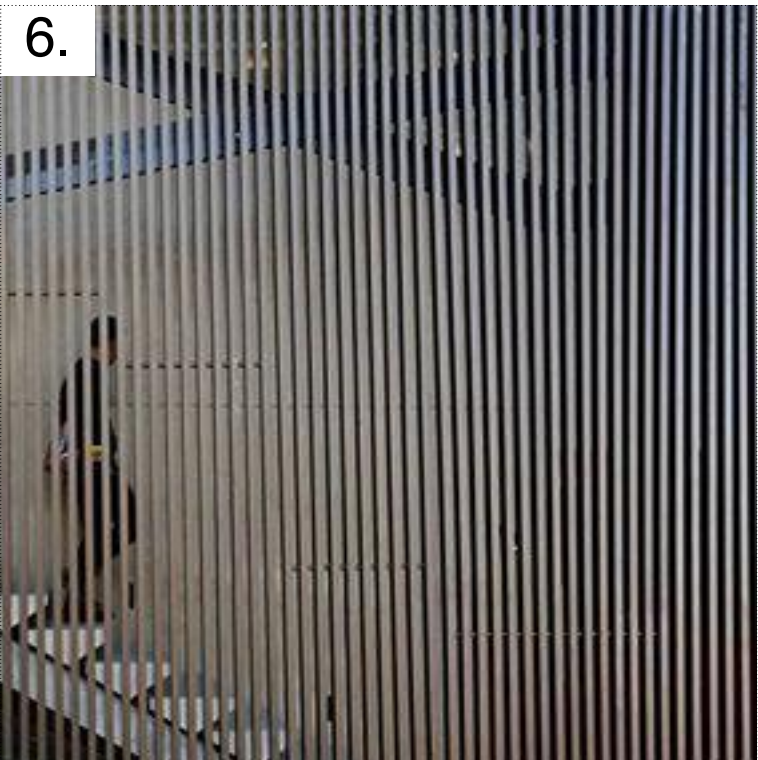
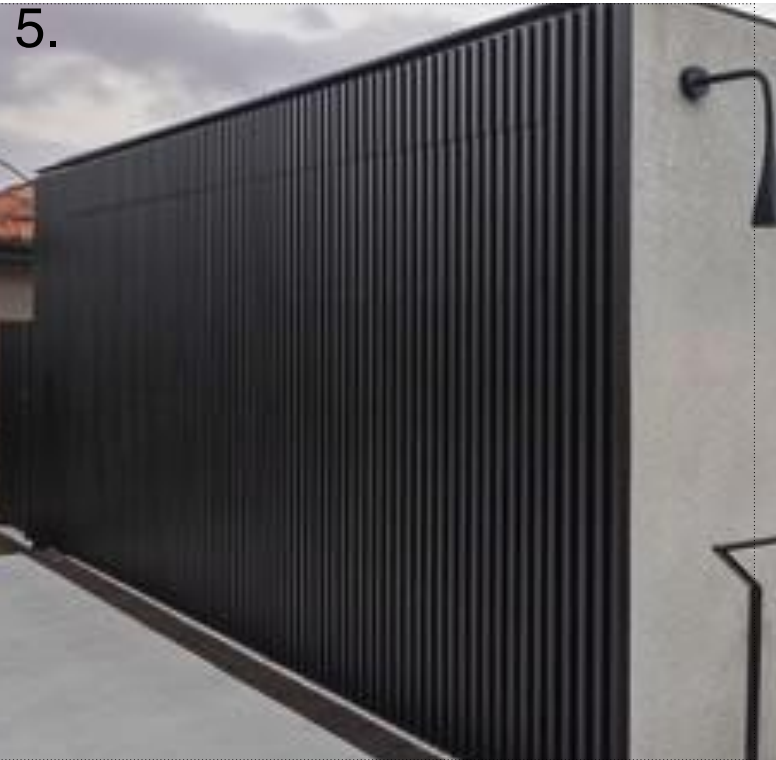
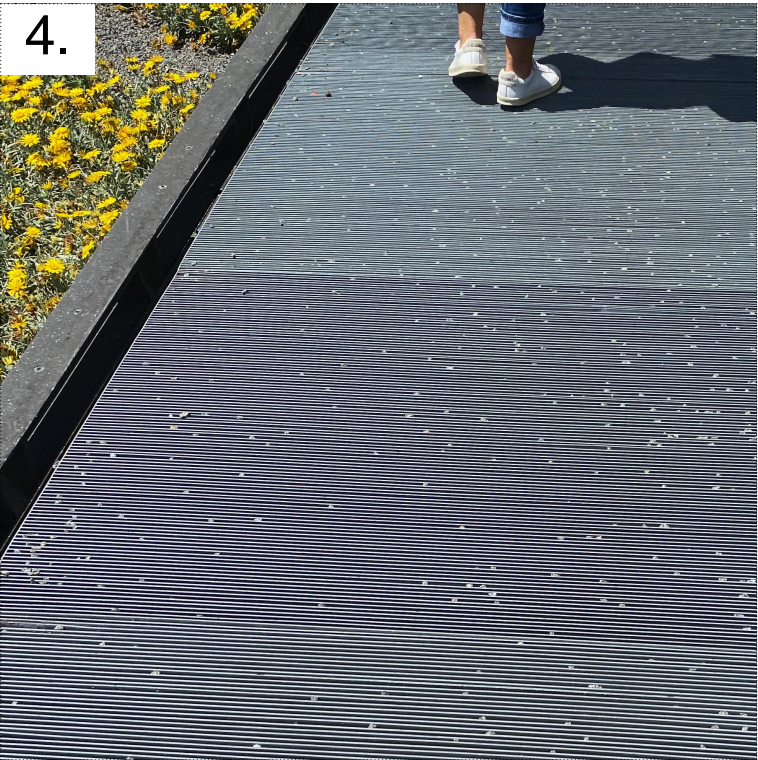
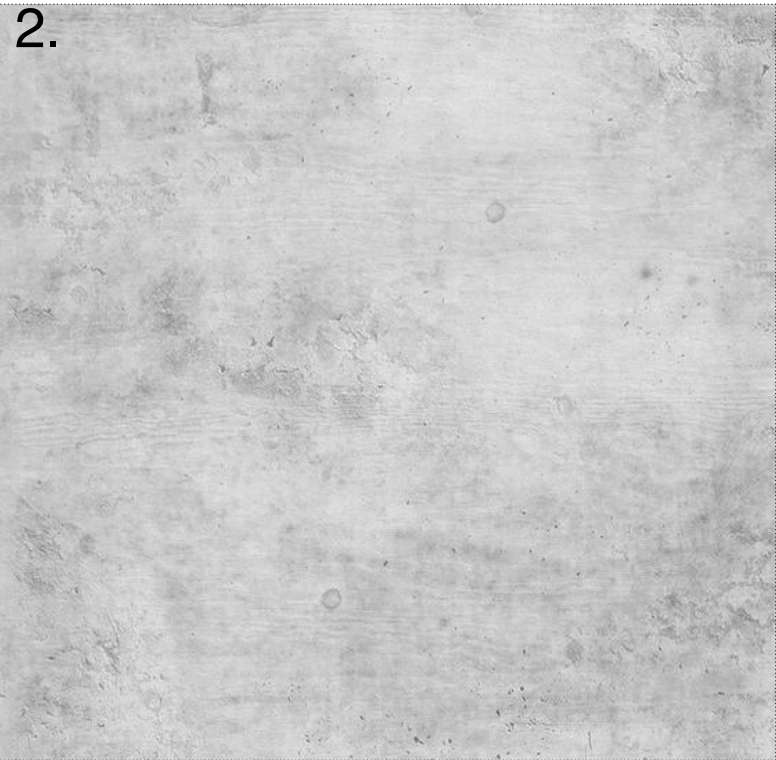
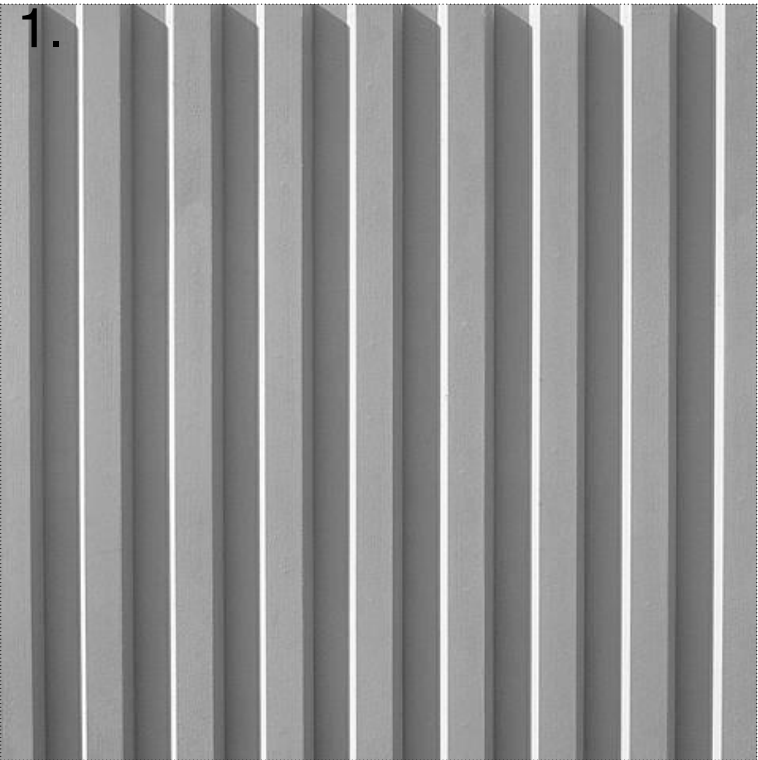
0 10 20 30 40 50 60 70 80 90 100mm
FULL SIZE ON ORIGINAL





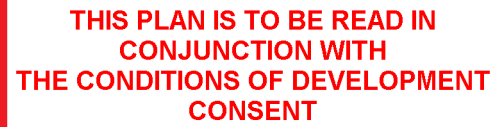
SCHEDULE OF COLOURS AND MATERIALS

1.	PRE-CAST CONCRETE PANELS (PCP)
2.	CONCRETE (CON)
3.	METAL MESH
4.	METAL GRATED MESH
5.	GARAGE DOOR/DOOR - METAL VERTICAL BATTEN
6.	VERTICAL BATTEN SCREEN (SCR)
7.	METAL DECK ROOF (MDR)

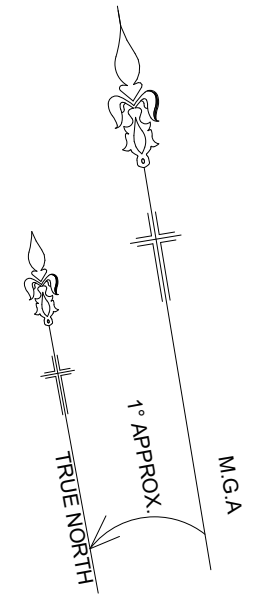


 **THIS PLAN IS TO BE READ IN CONJUNCTION WITH THE CONDITIONS OF DEVELOPMENT CONSENT**
DA2021/2559

NOTES: 1. THE CONCEPTS AND INFORMATION CONTAINED IN THIS DOCUMENT ARE THE COPYRIGHT OF CHENCHOW LITTLE PTY LTD. USE OR COPYING OF THE DOCUMENT IN WHOLE OR PART WITHOUT THE PERMISSION OF CHENCHOW LITTLE PTY LTD CONSTITUTES AN INFRINGEMENT OF COPYRIGHT. 2. THIS DRAWING IS FOR DESIGN CONCEPT ONLY. IT IS NOT TO BE USED FOR A CONSTRUCTION CERTIFICATE APPLICATION, TENDERING OR FOR CONSTRUCTION PURPOSES. 3. ALL LEVEL INFORMATION AND BOUNDARY DIMENSIONS ARE FROM THE SURVEY BY NORTON SURVEY PARTNERS. 4. DO NOT SCALE DRAWINGS. 5. THIS DRAWING IS ONLY FOR USE ON THE SITE AND FOR THE CLIENT IDENTIFIED ON THIS TITLE BLOCK. 6. VERIFY ALL DIMENSIONS AND LEVELS ON SITE PRIOR TO COMMENCEMENT OF WORK. IMMEDIATELY ADVISE ARCHITECT OF ANY DISCREPANCIES. ALLOW FOR ADJUSTMENTS TO SUIT DISCREPANCIES. 7. ALL WORK IS TO BE CARRIED OUT IN ACCORDANCE WITH THE REQUIREMENTS OF LOCAL AUTHORITIES, THE BUILDING CODE OF AUSTRALIA AND RELEVANT AUSTRALIAN STANDARDS.																																																																																																																																																																																																																																																																																																																																																																																																																																																																																																																																																																																																																																																																																																																																																																																																																																																																																																																																																																																																																																																																																																																																																																																																																																																																																																									
--	--	--	--	--	--	--	--	--	--	--	--	--	--	--	--	--	--	--	--	--	--	--	--	--	--	--	--	--	--	--	--	--	--	--	--	--	--	--	--	--	--	--	--	--	--	--	--	--	--	--	--	--	--	--	--	--	--	--	--	--	--	--	--	--	--	--	--	--	--	--	--	--	--	--	--	--	--	--	--	--	--	--	--	--	--	--	--	--	--	--	--	--	--	--	--	--	--	--	--	--	--	--	--	--	--	--	--	--	--	--	--	--	--	--	--	--	--	--	--	--	--	--	--	--	--	--	--	--	--	--	--	--	--	--	--	--	--	--	--	--	--	--	--	--	--	--	--	--	--	--	--	--	--	--	--	--	--	--	--	--	--	--	--	--	--	--	--	--	--	--	--	--	--	--	--	--	--	--	--	--	--	--	--	--	--	--	--	--	--	--	--	--	--	--	--	--	--	--	--	--	--	--	--	--	--	--	--	--	--	--	--	--	--	--	--	--	--	--	--	--	--	--	--	--	--	--	--	--	--	--	--	--	--	--	--	--	--	--	--	--	--	--	--	--	--	--	--	--	--	--	--	--	--	--	--	--	--	--	--	--	--	--	--	--	--	--	--	--	--	--	--	--	--	--	--	--	--	--	--	--	--	--	--	--	--	--	--	--	--	--	--	--	--	--	--	--	--	--	--	--	--	--	--	--	--	--	--	--	--	--	--	--	--	--	--	--	--	--	--	--	--	--	--	--	--	--	--	--	--	--	--	--	--	--	--	--	--	--	--	--	--	--	--	--	--	--	--	--	--	--	--	--	--	--	--	--	--	--	--	--	--	--	--	--	--	--	--	--	--	--	--	--	--	--	--	--	--	--	--	--	--	--	--	--	--	--	--	--	--	--	--	--	--	--	--	--	--	--	--	--	--	--	--	--	--	--	--	--	--	--	--	--	--	--	--	--	--	--	--	--	--	--	--	--	--	--	--	--	--	--	--	--	--	--	--	--	--	--	--	--	--	--	--	--	--	--	--	--	--	--	--	--	--	--	--	--	--	--	--	--	--	--	--	--	--	--	--	--	--	--	--	--	--	--	--	--	--	--	--	--	--	--	--	--	--	--	--	--	--	--	--	--	--	--	--	--	--	--	--	--	--	--	--	--	--	--	--	--	--	--	--	--	--	--	--	--	--	--	--	--	--	--	--	--	--	--	--	--	--	--	--	--	--	--	--	--	--	--	--	--	--	--	--	--	--	--	--	--	--	--	--	--	--	--	--	--	--	--	--	--	--	--	--	--	--	--	--	--	--	--	--	--	--	--	--	--	--	--	--	--	--	--	--	--	--	--	--	--	--	--	--	--	--	--	--	--	--	--	--	--	--	--	--	--	--	--	--	--	--	--	--	--	--	--	--	--	--	--	--	--	--	--	--	--	--	--	--	--	--	--	--	--	--	--	--	--	--	--	--	--	--	--	--	--	--	--	--	--	--	--	--	--	--	--	--	--	--	--	--	--	--	--	--	--	--	--	--	--	--	--	--	--	--	--	--	--	--	--	--	--	--	--	--	--	--	--	--	--	--	--	--	--	--	--	--	--	--	--	--	--	--	--	--	--	--	--	--	--	--	--	--	--	--	--	--	--	--	--	--	--	--	--	--	--	--	--	--	--	--	--	--	--	--	--	--	--	--	--	--	--	--	--	--	--	--	--	--	--	--	--	--	--	--	--	--	--	--	--	--	--	--	--	--	--	--	--	--	--	--	--	--	--	--	--	--	--	--	--	--	--	--	--	--	--	--	--	--	--	--	--	--	--	--	--	--	--	--	--	--	--	--	--	--	--	--	--	--	--	--	--	--	--	--	--	--	--	--	--	--	--	--	--	--	--	--	--	--	--	--	--	--	--	--	--	--	--	--	--	--	--	--	--	--	--	--	--	--	--	--	--	--	--	--	--	--	--	--	--	--	--	--	--	--	--	--	--	--	--	--	--	--	--	--	--	--	--	--	--	--	--	--	--	--	--	--	--	--	--	--	--	--	--	--	--	--	--	--	--	--	--	--	--	--	--	--	--	--	--	--	--	--	--	--	--	--	--	--	--	--	--	--	--	--	--	--	--	--	--	--	--	--	--	--	--	--	--	--	--	--	--	--	--	--	--	--	--	--	--	--	--	--	--	--	--	--	--	--	--	--	--	--	--	--	--	--	--	--	--	--	--	--	--	--	--	--	--	--	--	--	--	--	--	--	--	--	--	--	--	--	--	--	--	--	--	--	--	--	--	--	--	--	--	--	--	--	--	--	--	--	--	--	--	--	--	--	--	--	--	--	--	--	--	--	--	--	--	--	--	--	--	--	--	--	--	--	--	--	--	--	--	--	--	--	--	--	--	--	--	--	--	--	--	--	--	--	--	--	--	--	--	--	--	--	--	--	--	--	--	--	--	--	--	--	--	--	--	--	--	--	--	--	--	--	--	--	--	--	--	--	--	--	--	--	--	--	--	--	--	--	--	--	--	--	--	--	--	--	--	--	--	--	--	--	--	--	--	--	--	--	--	--	--	--	--	--	--	--	--	--	--	--	--	--	--	--	--	--	--	--	--	--	--	--	--	--	--	--	--	--	--	--	--	--	--	--	--	--	--	--	--	--	--	--	--	--	--	--	--	--	--	--	--	--	--	--	--	--	--	--	--	--	--	--	--	--	--	--	--	--	--	--	--	--	--	--	--	--	--	--	--	--	--	--	--	--	--	--	--	--	--	--	--	--	--	--	--	--	--	--	--	--	--	--	--	--	--	--	--	--	--	--	--	--	--	--	--	--	--	--	--	--	--	--	--	--	--	--	--	--	--	--	--	--	--	--	--	--



DA2021/2559



NOTES:

1. THE CONCEPTS AND INFORMATION CONTAINED IN THIS DOCUMENT ARE THE SOLE PROPERTY OF CHENHOU LITTLE PTY LTD. USE OR COPYING OF THE DOCUMENT IN WHOLE OR PART WITHOUT THE PERMISSION OF CHENHOU LITTLE PTY LTD CONSTITUTES AN INFRINGEMENT OF COPYRIGHT.
2. THIS DOCUMENT IS NOT TO BE USED FOR ANY PURPOSES WITHOUT A CONSTRUCTION CERTIFICATE APPLICATION, TENDERING OR FOR ANY OTHER CONSTRUCTION PURPOSES.
3. ALL LEVEL INFORMATION AND BOUNDARY DIMENSIONS ARE FROM THE SURVEY BY NORTON SURVEY PARTNERS.
4. DO NOT SCALE DRAWINGS.
5. THIS DRAWING IS ONLY FOR USE ON THE SITE AND FOR THE CLIENT'S REFERENCE ONLY.
6. VERIFY ALL DIMENSIONS AND LEVELS ON SITE PRIOR TO COMMENCEMENT OF WORK. IMMEDIATELY ADVISE ARCHITECT OF ANY DISCREPANCIES. ALLOW FOR TOLERANCES.
7. ALL WORK IS TO BE CARRIED OUT IN ACCORDANCE WITH THE REQUIREMENTS OF THE NATIONAL BUILDING CODE OF AUSTRALIA AND RELEVANT AUSTRALIAN STANDARDS.

SUITE 3, 151 FOVEAUX STREET
SURREY HILLS, NSW, 2010
PH: (02) 9357 4333
E-MAIL: mail@chenchowlittle.com
ARCHITECT'S REG. NO. 6123 (A. CHENCHOW)

**DEVELOPMENT APPLICATION
NOT FOR CONSTRUCTION**

2103 - BROOKVALE

**WAREHOUSE FOR
SWELL TRADING PTY LTD**
8 GROSVENOR PLACE BROOKVALE NSW 2100
LOT 1 DP599064

DRAWING TITLE:

WASTE MANAGEMENT PLAN

DRAWING NUMBER:

A-DA-403

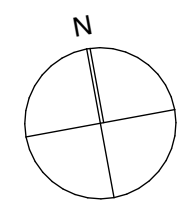
DATE:
December 2021

DRAWN BY:
AH

SCALE:
1:100 @ A1
1:200 @ A3

JOB NO:
2102

0 10 20 30 40 50 60 70 80 90 100mm
FULL SIZE ON ORIGINAL



AMENDMENT:
A