

1. THESE DRAWINGS ARE NOT TO BE USED FOR CONSTRUCTION IF THE ISSUE DATE PRECEDES THE ISSUE DATE ON THE LATEST ARCHITECTURAL DRAWINGS.
2. DO NOT SCALE FROM THESE DRAWING.
3. ALL DIMENSIONS ARE TO BE VERIFIED ON SITE BY THE BUILDER BEFORE COMMENCING WITH ASSOCIATED WORK.

A1. ALL WORKS SHALL BE CARRIED OUT IN ACCORDANCE WITH THE AUSTRALIAN STANDARDS (LATEST VERSION) AND THE REQUIREMENTS OF THE LOCAL COUNCIL AND ANY APPLICABLE AUTHORITIES.

A2. ALL LEVELS SHOWN ARE TO THE AUSTRALIAN HEIGHT DATUM (AHD) UNLESS NOTED OTHERWISE.

A3. THE LOCATION OF ALL DRAINAGE ELEMENTS ARE SHOWN INDICATIVELY BASED ON AVAILABLE SURVEY OR OTHER INFORMATION. ALL DRAINAGE ELEMENTS ARE TO BE INSTALLED WITH CONSIDERATION TO SITE CONSTRAINTS AND THE INTENT OF THE DRAINAGE CONCEPT.

A4. ANY MATERIAL VARIATIONS TO THE DRAINAGE CONCEPT OR DETAILED STORMWATER ELEMENTS MUST BE APPROVED BY NORTHERN BEACHES CONSULTING ENGINEERS PTY LTD PRIOR TO COMMENCEMENT.

A5. ANY EXCAVATION OR TRENCHING FOR SERVICES ADJACENT TO A STRUCTURE OR PROPERTY BOUNDARY MUST NOT ENCOACH ON THE 'ZONE OF INFLUENCE', REFER TO THE NCC FOR FURTHER DETAILS.

B1. CONTRACTORS TO LOCATE ALL EXISTING SERVICES PRIOR TO EXCAVATION AND NOTIFY ENGINEER OF ANY POTENTIAL CLASHES WITH THE PROPOSED STORMWATER DRAINAGE SYSTEM.

B2. ANY ELEMENTS OF THE EXISTING STORMWATER SYSTEM WHICH ARE PROPOSED TO BE RETAINED MUST BE INSPECTED AND APPROVED BY AN ENGINEER PRIOR TO CONSTRUCTION AS BOTH HAVING ADEQUATE CAPACITY TO CATER FOR THE RUNOFF DIRECTED TO IT AND BEING IN ADEQUATE CONDITION FOR USE.

B3. EXISTING STORMWATER SYSTEM ALSO TO BE INSPECTED BY A SUITABLY QUALIFIED PLUMBER PRIOR TO CONSTRUCTION AND UPGRADED AS REQUIRED IN ACCORDANCE WITH A395600.3.

B4. CARE SHOULD BE TAKEN WHEN UNDERTAKING WORKS IN THE VICINITY OF TREES NOT TO DISTURB THE TREE ROOT SYSTEM. HAND DIGGING OF TRENCHES MAY BE REQUIRED SUBJECT TO THE PROJECT ARBORISTS REQUIREMENTS. REFER TO THE ARBORIST REPORT FOR EXCAVATION REQUIREMENTS SURROUNDING PROTECTED TREE ROOT ZONES.

B5. SWIMMING POOL SURCHARGE OVERFLOW TO BE CONNECTED VIA GRAVITY TO THE SEWER IN ACCORDANCE WITH A53500. DETAILS AND CERTIFICATION BY OTHERS.

B6. EXTENT, ALIGNMENT, DEPTH AND CONDITION OF ANY COUNCIL STORMWATER PIPELINE WITHIN A DEVELOPMENT SITE MUST BE VERIFIED PRIOR TO CONSTRUCTION AND THE ENGINEER MUST BE NOTIFIED UPON VERIFICATION. ANY NEW CONNECTION TO A COUNCIL STORMWATER PIPELINE WILL BE SUBJECT TO COUNCIL APPROVAL AND MUST BE INSTALLED IN ACCORDANCE WITH THE LOCAL COUNCIL SPECIFICATIONS.

- C1. ALL PIPES TO BE MINIMUM 100mm Ø UNLESS NOTED OTHERWISE.
- C2. ALL PIPES TO BE uPVC SENIOR GRADE TO AS 1254 UNLESS NOTED OTHERWISE.
- C3. ALL PIPES TO BE LAYED AT 1 % MINIMUM GRADE UNLESS NOTED OTHERWISE.
- C4. ALL CONNECTIONS INTO EXISTING PIPES MUST BE MADE IN THE DIRECTION OF FLOW.
- C5. ANY NEW uPVC CONNECTIONS INTO EXISTING R.C. PIPES MUST BE MADE INTO THE TOP HALF OF THE PIPE USING A FLOWCON CONNECTION FITTING U.N.O.
- C6. ALL PIPES SHALL BE LAID ON A 75mm SAND BED, COMPACTED TO 100% S.M.D.D. BELOW PAVEMENTS. (NO COMPACTION REQUIRED BELOW LANDSCAPING) COVER TO SURFACE FROM TOP OF PIPE TO BE 300mm MINIMUM. BACKFILL TO BE ADEQUATELY CONSOLIDATED AROUND PIPES BY METHOD OF RAMMING AND WATERING IN. TRENCHES TO BE FILLED WITH NO-FINES GRANULAR MATERIAL AS SPECIFIED.
- C7. ALL EXISTING EARTHENWARE PIPES TO BE UPGRADED TO uPVC.
- C8. MINIMUM PIPE COVER TO ALL IN-GROUND PIPEWORK SHALL BE CARRIED OUT IN ACCORDANCE WITH TABLE 7.1 - A93500.3.
- C9. ALL SUSPENDED PIPE FIXINGS ARE TO BE CARRIED OUT IN ACCORDANCE WITH A52032.
- C10. ENSURE THAT ALL STORMWATER PITS AND PIPES ARE LOCATED CLEAR FROM TREE ROOT SYSTEMS.
- C11. ALL PIPEWORK MUST BE INSTALLED WITHIN THE SITE BOUNDARY OF THE DEVELOPMENT SITE. ANY NEW OR EXISTING PIPEWORK EXTENDING THROUGH PRIVATE PROPERTY BEYOND THE BOUNDARY OF THE DEVELOPMENT SITE MUST BE CONTAINED SOLELY WITHIN A DRAINAGE EASEMENT. IF NO DRAINAGE EASEMENT EXISTS, A NEW DRAINAGE EASEMENT MUST BE SOUGHT AND REGISTERED PRIOR TO UTILISING OR INSTALLING PIPEWORK THROUGH NEIGHBOURING PROPERTIES. CONTACT THE ENGINEER IF A DRAINAGE EASEMENT CANNOT BE OBTAINED.

D1. ALL DOWN PIPES TO BE 100mm Ø UNLESS NOTED OTHERWISE.

D2. DOWN PIPE LOCATIONS ARE INDICATIVE ONLY. LOCATIONS TO BE CONFIRMED WITH ARCHITECT PRIOR TO COMMENCEMENT OF WORK.

D3. PROVIDE CLEANING EYES AT ALL DOWNPIPES.

D4. GUTTER GUARDS MUST BE INSTALLED ON ALL GUTTERS UNLESS NOTED OTHERWISE.

D5. ALL EAVES GUTTER AND VALLEY GUTTER SYSTEMS MUST BE INSTALLED IN ACCORDANCE WITH AS5300.3 REQUIREMENTS.

D6. ALL BOX GUTTER SYSTEMS MUST BE INSTALLED STRICTLY IN ACCORDANCE WITH THE DETAILS SHOWN ON THE APPROVED STORMWATER MANAGEMENT PLAN. IF NO DETAILS ARE SHOWN, THE BOX GUTTER SYSTEM MUST BE INSTALLED IN ACCORDANCE WITH AS5300.3. IF ANY CHANGE TO THE BOX GUTTER SYSTEM CONFIGURATION IS PROPOSED, THE ENGINEER MUST BE NOTIFIED FOR A RE-DESIGN. IF THE INSTALLED BOX GUTTER DOES NOT STRICTLY COMPLY WITH THE DESIGN DETAILED ON THE STORMWATER MANAGEMENT PLAN, CERTIFICATION OF THE HYDRAULIC SYSTEM MAY BE REFUSED.

D7. ALL GREEN ROOFS, PEBBLED ROOFS AND PLANTERS WITH A CONCRETE BASE MUST BE WATERPROOFED AND HAVE DRAINAGE CELL INSTALLED IN ACCORDANCE WITH THE MANUFACTURERS SPECIFICATION.

E1. ALL STORMWATER PITS MUST BE INSTALLED IN ACCORDANCE WITH AS3500.3.

E2. ALL CONCRETE PITS TO BE CAST INSITU OR, IF PRECAST, APPROVED BY ENGINEER. CAST INSITU PITS TO HAVE 150mm THICK CONCRETE WALLS AND BASE. WALLS TO BE REINFORCED WITH 1 N12 TOP TIE UNLESS NOTED OTHERWISE. CAST INSITU PITS GREATER THAN 900 DEEP TO BE MINIMUM 900x600 AND TO HAVE 150mm THICK CONCRETE WALLS AND BASE. WALLS TO BE REINFORCED WITH N12 AT 300 EACH WAY UNLESS NOTED OTHERWISE.

E3. MINIMUM INTERNAL DIMENSIONS FOR STORMWATER AND INLET PITS TO BE IN ACCORDANCE WITH TABLE 8.2, AS3500.3.

E4. ALL PITS GREATER THAN 1200mm DEEP SHALL HAVE STEP IRONS INSTALLED. STEP IRON INSTALLATION MUST BE IN ACCORDANCE WITH THE RELEVANT AUSTRALIAN STANDARDS.



SUBSOIL DRAINAGE:

F1. ALL SUBSOIL DRAINAGE TO BE INSTALLED AS REQUIRED IN ACCORDANCE WITH A53500.3 (SPECIFICALLY SECTION 6, 7 AND APPENDIX M) AND THE NCC.

F2. INSTALLATION OF SUBSOIL DRAINAGE LINES IS GENERALLY REQUIRED WHERE SUBSURFACE WATER MOVEMENT COULD DAMAGE BUILDINGS OR CAUSE LOSS OF AMENITY THROUGH THE BUILD-UP OF EXCESSIVE MOISTURE OR LATERAL WATER PRESSURE. THIS INCLUDES ALONG WALLS THAT IMPED THE NATURAL FLOW OF GROUNDWATER, ON THE UPHILL SIDE OF CUT AND FILL SITES, ADJACENT TO DEEP FOOTINGS, BEHIND RETAINING WALLS AND ADJACENT TO BASEMENT WALLS. SUBSOIL DRAINAGE IS GENERALLY ALSO REQUIRED IN SHALLOW LANDSCAPED AREAS OVER ROCK OR POORLY DRAINED SOILS TO PREVENT OVERLY SATURATED LANDSCAPED AREAS.

F3. THE INSTALLATION OF SUBSOIL DRAINAGE MAY REQUIRE TRENCHING THROUGH ROCK.

F4. ALL SUBSOIL LINES ARE TO BE 100mm UPVC SLOTTED PIPE (UNSOCKETED), LAID AT (MIN.) 0.5% FALL UNO.

F5. THE SUBSOIL LINE IS TO BE SURROUNDED BY SELECT FILTER MATERIAL, GENERALLY 10-20mm DIAMETER AGGREGATE.

F6. THE TRENCH SHALL BE SIZED TO PROVIDE A MINIMUM 50mm BEDDING AND 100mm COVER ALL AROUND THE SUBSOIL LINE, GENERALLY MINIMUM 300mm WIDE X 300mm DEEP. THE TRENCH IS TO BE WRAPPED ALL-ROUND IN NON-WOVEN, GEOTEXTILE FABRIC OF STRENGTH CLASS A, WITH SUFFICIENT OVERLAP (LESSER OF TRENCH WIDTH OR 500mm).

F7. WHERE THE IN-SITU SOILS HAVE A GRAIN SIZE SMALLER THAN THE GEOTEXTILE FABRIC, COARSE WASHED-SAND SHOULD BE USED AS A FILTER TO PREVENT BLOCKAGE OF THE GEOFABRIC.

F8. THE BACKFILL LAYER OVER THE TRENCH SHALL BE NO-FINES COURSE WASHED-SAND. WHERE LANDSCAPED AREAS ARE PROPOSED OVER THE TRENCH, THE TOP 300mm OF BACKFILL MAY BE MIXED WITH UP TO 20% ORGANIC MATTER.

F9. ALL SUBSOIL LINES ARE TO DISCHARGE INTO A GRATED PIT, AT A LEVEL MINIMUM 50mm ABOVE THE PIT OUTLET UNO. THE PROJECT BUILDER IS TO IMPLEMENT APPROPRIATE MEASURES TO PREVENT SUBSOIL LINE BLOCKAGE OR INFESTATION OF VERMIN.

F10. THE HIGH-END OF THE SUBSOIL LINE IS TO BE TURNED UP AT 45° AND TERMINATE AT GROUND LEVEL WITH AN INSPECTION CAP TO ENABLE FUTURE FLUSH OUT AND MAINTENANCE.

F11. 100mm Ø x 3000 LONG TAIL OUT SUBSOIL LINE TO BE PROVIDED ON THE UPSTREAM SIDE OF ALL LARGE PITS OR IN AREAS WITH HIGH SEEPAGE FLOWS. SUBSOIL LINE TO BE COVERED WITH GEOTEXTILE FILTER SOCK FOR THE FULL LENGTH AND END COVERED. BACKFILL MUST BE IN NO-FINES COARSE WASHED-SAND.

G1. ALL PIPEWORK IN A CHARGED SYSTEM TO BE 100mm ØUPVC PRESSURE OR SEWER GRADE PIPES WITH ALL JOINTS PRESSURE SEALED TO A MINIMUM OF 500mm (UNLESS NOTED OTHERWISE) ABOVE THE INLET OF THE DISCHARGE POINT. ALL JOINTS TO BE SOLVENT WELDED IN ACCORDANCE WITH THE AUSTRALIAN STANDARDS.

G2. ALL CHARGED SYSTEMS MUST HAVE A BLEED OUT LINE AT THE LOW POINT IN THE CHARGED SYSTEM WHICH MUST BE CONNECTED TO A FLUSH OUT PIT VIA GRAVITY. THE BLEED LINE MUST BE MAINTAINED AND REGULARLY FLUSHED OUT.

H1. ORIFICE PLATE MUST BE INSTALLED PRIOR TO INSTALLATION OF THE ROOF DRAINAGE SYSTEM AND CONNECTION OF THE SITE STORMWATER SYSTEM TO THE ON-SITE DETENTION TANK.

H2. THE HEIGHT DIFFERENCE (H_H) BETWEEN THE ORIFICE CENTRELINE AND THE TOP WATER LEVEL OF THE ON-SITE DETENTION TANK MUST BE CONSTRUCTED IN ACCORDANCE WITH THE STORMWATER MANAGEMENT PLAN. IF H_H CHANGES DUE TO SITE CONDITIONS, THE ENGINEER MUST BE NOTIFIED FOR AN ORIFICE PLATE SIZE ADJUSTMENT.

H3. ANY PIPE FITTINGS FOR BELOW GROUND ON-SITE DETENTION TANKS MUST BE INSTALLED IN ACCORDANCE WITH THE MANUFACTURERS SPECIFICATIONS.

H4. ACCESS HATCHES MUST BE INSTALLED AT BOTH ENDS OF THE ON-SITE DETENTION TANK. IF THE DEPTH OF THE TANK IS GREATER THAN 1200mm, STEPS IRONS MUST BE INSTALLED IN ACCORDANCE WITH THE RELEVANT AUSTRALIAN STANDARDS.

H5. ABOVE GROUND ON-SITE DETENTION BASINS MUST NOT EXCEED A PONDING DEPTH OF 300mm, UNLESS NOTED OTHERWISE. THE BUILDER MUST ENSURE THAT THE REQUIRED DETENTION VOLUME IS ACHIEVED DURING CONSTRUCTION. A WORK-AS-EXECUTED PLAN DETAILING THE FINISHED LEVELS AND VOLUME OF THE ON-SITE DETENTION BASIN MUST BE CARRIED OUT AT THE COMPLETION OF WORKS BY A REGISTERED SURVEYOR AND APPROVED BY THE ENGINEER PRIOR TO FINAL CERTIFICATION.

J1. WHEN LAND FALLS TOWARDS A BUILDING, INCLUDING LAND UPSLOPE OF THE PROPERTY BOUNDARY GROUND SURFACE LEVELS ADJACENT TO THE BUILDING ARE TO BE REGRADED SUCH THAT THE FIRST METRE HAS MINIMUM 50mm FALL AWAY FROM THE BUILDING, GENERALLY IN ACCORDANCE WITH THE NCC.

K6: IF NOT SPECIFIED ON PLANS, THE FIRST FLUSH SYSTEM IS TO HAVE A MINIMUM SIZE OF 20L PER 100m² OF ROOF CATCHMENT AREA PRIOR TO ENTERING THE RAINWATER TANK. INDIVIDUAL SITE ANALYSIS IS REQUIRED IN HEAVILY POLLUTED AREAS TO DETERMINE IF LARGER VOLUMES OF FIRST FLUSH RAINWATER ARE TO BE DIVERTED. IF IN DOUBT, CHECK WITH LOCAL HEALTH AUTHORITIES.

K7: SCREENED DOWNPIPE RAINWATER HEAD OR OTHER SUITABLE LEAF AND DEBRIS DEVICE TO BE INSTALLED ON EACH DOWNPIPE. SCREEN MESH TO BE 4-6mm AND DESIGNED TO BE SELF-CLEANING.

K8: FIRST FLUSH DEVICES, OR APPROVED ALTERNATIVE, TO BE INSTALLED WITH AN AUTOMATED DIVERSION AND DRAINAGE SYSTEM, THAT IS, NO MANUAL DIVERSION AND DRAINAGE VALVES. REFER TYPICAL FLUSH OUT PIT FOR DETAILS.

K9: BEFORE PURCHASING MATERIALS OR PAINT TO BE USED ON ROOF CATCHMENT AREAS, THE MANUFACTURER'S RECOMMENDATIONS ON LABELS AND BROCHURES FOR RAINWATER TANK SUITABILITY TO BE READ AND ADHERED TO.

K10: PRE-STORAGE PITS FOR UNDERGROUND RAINWATER STORAGE TANKS AND FLUSH OUT PITS MAY ASSIST IN LIMITING SILT, AND PREVENT VERMIN, INSECTS (INCLUDING MOSQUITOES) AND DEBRIS FROM ENTERING THE RAINWATER STORAGE AREA.

K11: BUILDER/PLUMBER TO ENSURE THE INSTALLATION OF THE RAINWATER TANK SYSTEM IS IN ACCORDANCE WITH THE RELEVANT AUSTRALIAN STANDARDS AND THE RAINWATER TANK DESIGN AND INSTALLATION HANDBOOK - HB 230-2008. IF IN DOUBT CONTACT ENGINEER.

K12: RAINWATER TANK TO BE MAINTAINED AND PROOFED IN ACCORDANCE WITH HB 230-2008

ST1: BASIX RECOMMENDS PROVIDING A STORMWATER TANKS FOR USE AS PER BASIX REQUIREMENTS FOR THE FOLLOWING USES: a) TO WATER GARDEN AREAS

ST2: THE TANKS PROVIDED WILL REDUCE PRESSURE ON COUNCIL'S STORMWATER INFRASTRUCTURE.

ST3: IF NOT SPECIFIED ON PLANS, THE FIRST FLUSH SYSTEM IS TO HAVE A MINIMUM SIZE OF 20L PER 100m2 OF ROOF CATCHMENT AREA PRIOR TO ENTERING THE RAINWATER TANK. INDIVIDUAL SITE ANALYSIS IS REQUIRED IN HEAVILY POLLUTED AREAS TO DETERMINE IF LARGER VOLUMES OF FIRST FLUSH RAINWATER ARE TO BE DIVERTED. IF IN DOUBT, CHECK WITH LOCAL HEALTH AUTHORITIES.

ST4: SCREENED DOWNPIPE RAINWATER HEAD OR OTHER SUITABLE LEAF AND DEBRIS DEVICE TO BE INSTALLED ON EACH DOWNPIPE. SCREEN MESH TO BE 4-6mm AND DESIGNED TO BE SELF-CLEANING.

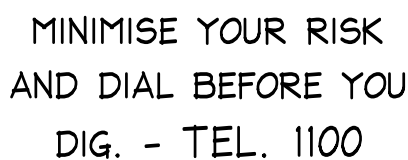
ST5: FIRST FLUSH DEVICES, OR APPROVED ALTERNATIVES, TO BE INSTALLED WITH AN AUTOMATED DIVERSION AND DRAINAGE SYSTEM, THAT IS, NO MANUAL DIVERSION AND DRAINAGE VALVES. REFER TYPICAL FLUSH OUT PIT FOR DETAILS.

ST6: BEFORE PURCHASING MATERIALS OR PAINT TO BE USED ON ROOF CATCHMENT AREAS, THE MANUFACTURER'S RECOMMENDATIONS ON LABELS AND BROCHURES FOR RAINWATER TANK SUITABILITY TO BE READ AND ADHERED TO.

1. THIS DRAWING IS NOT TO BE USED FOR CONSTRUCTION IF THE ISSUE DATE PRECEDES THE ISSUE DATE ON THE ARCHITECTURAL DRAWINGS.
2. DO NOT SCALE FROM THIS DRAWING.
3. ALL DIMENSIONS ARE TO BE VERIFIED ON SITE BY THE BUILDER BEFORE COMMENCING WITH ASSOCIATED WORK.
4. FOR GENERAL NOTES REFER TO DRAWING NUMBER: D01.

NO INVESTIGATION OF UNDERGROUND SERVICES HAS BEEN MADE. ALL RELEVANT AUTHORITIES SHOULD BE NOTIFIED PRIOR TO ANY EXCAVATION ON OR NEAR THE SITE DEVELOPERS & EXCAVATORS MAY BE HELD FINANCIALLY RESPONSIBLE BY THE ASSET OWNER SHOULD THEY DAMAGE UNDERGROUND NETWORKS.

- CAUSE DEATH OR SERIOUS INJURY TO WORKERS AND THE GENERAL PUBLIC
- INCONVENIENCE USERS OF ELECTRICITY, GAS, WATER AND COMMUNICATIONS
- LEAD TO CRIMINAL PROSECUTION AND DAMAGES CLAIMS
- CAUSE EXPENSIVE FINANCIAL LOSSES TO BUSINESS
- CUT OFF EMERGENCY SERVICES
- DELAY PROJECT COMPLETION TIMES WHILE THE DAMAGE IS REPAIRED



METHOD OF DISCHARGE

D01 - STORMWATER DRAINAGE GENERAL NOTES
D02 - STORMWATER DRAINAGE MANAGEMENT PLAN
D03 - ROOF DRAINAGE PLAN
D03 - STORMWATER DRAINAGE DETAILS SHEET

ISSUED FOR D.A.
SUBMISSION ONLY
NOT FOR
CONSTRUCTION

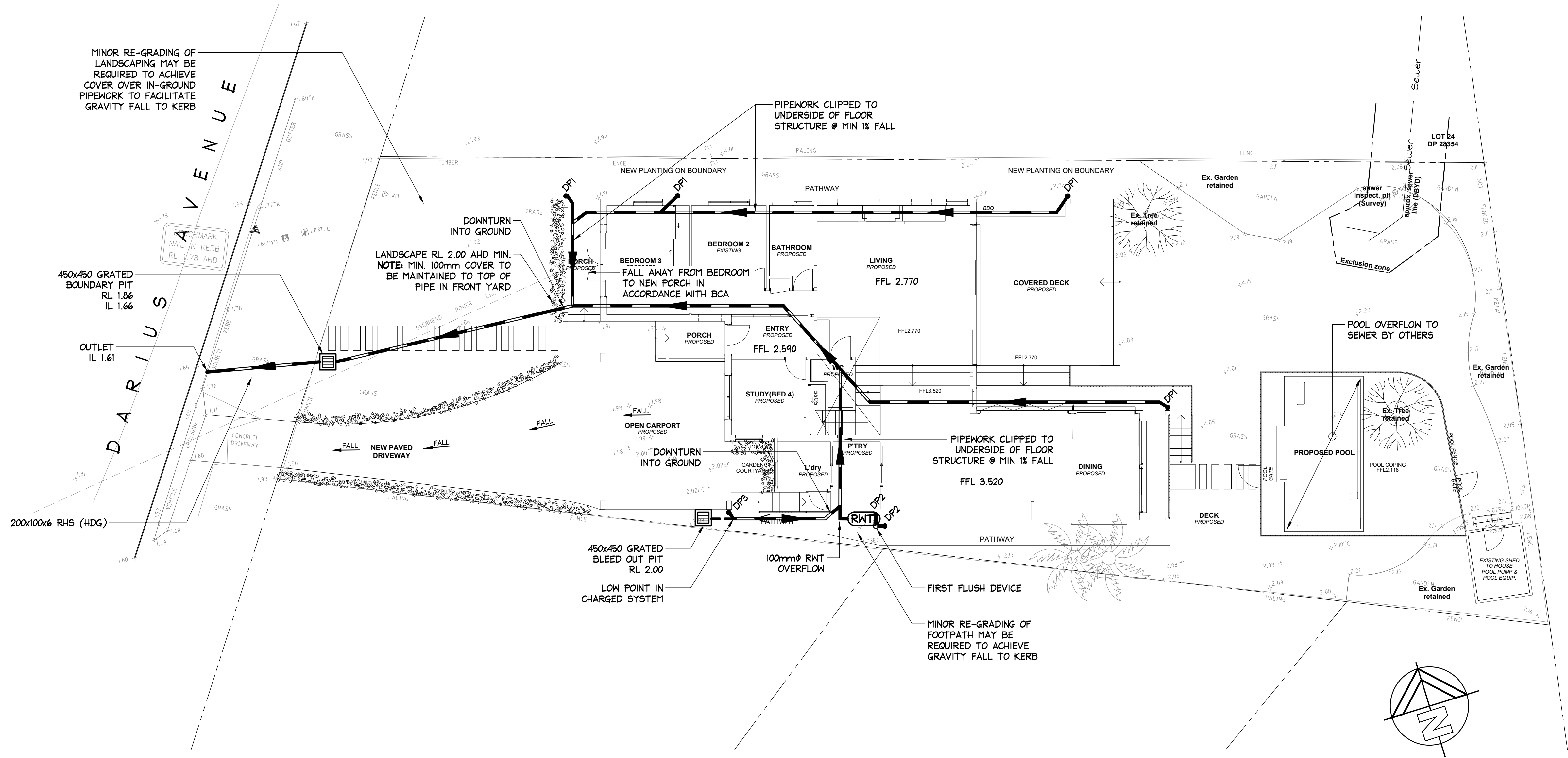
IF IN DOUBT ASK

[illegible]

NB Consulting Engineers

NOTES:

1. THIS DRAWING IS NOT TO BE USED FOR CONSTRUCTION IF THE ISSUE DATE PRECEDES THE ISSUE DATE ON THE ARCHITECTURAL DRAWINGS.
2. DO NOT SCALE FROM THIS DRAWING.
3. ALL DIMENSIONS ARE TO BE VERIFIED ON SITE BY THE BUILDER BEFORE COMMENCING WITH ASSOCIATED WORK.
4. FOR GENERAL NOTES REFER TO DRAWING NUMBER: D01.



STORMWATER DRAINAGE MANAGEMENT PLAN

SCALE = 1 : 100

LEGEND

- DP1 • 100mm ϕ DOWNPIPE TO DISCHARGE TO BOUNDARY PIT
- DP2 • 100mm ϕ DOWNPIPE TO DISCHARGE TO RAINWATER TANK
- DP3 • 100mm ϕ DOWNPIPE TO DISCHARGE TO BOUNDARY PIT VIA CHARGED SYSTEM
- NEW STORMWATER PIPE
- STORMWATER PIPE FLOW DIRECTION
- STORMWATER PIPE FALL DIRECTION IN CHARGED SYSTEMS
- PIT STORMWATER PIT
- RWT RAINWATER TANK TO COLLECT ALL DP2 DOWNPIPES. TO BE RE-USED AS PER BASIX REQUIREMENTS LOCAL COUNCIL & SYDNEY WATER REQUIREMENTS

NOTE: ALL DRAINAGE LINE LOCATIONS ARE INDICATIVE ONLY. LOCATION MAY VARY DUE TO CONSTRAINTS.



MINIMISE YOUR RISK
AND DIAL BEFORE YOU
DIG. - TEL. 1100

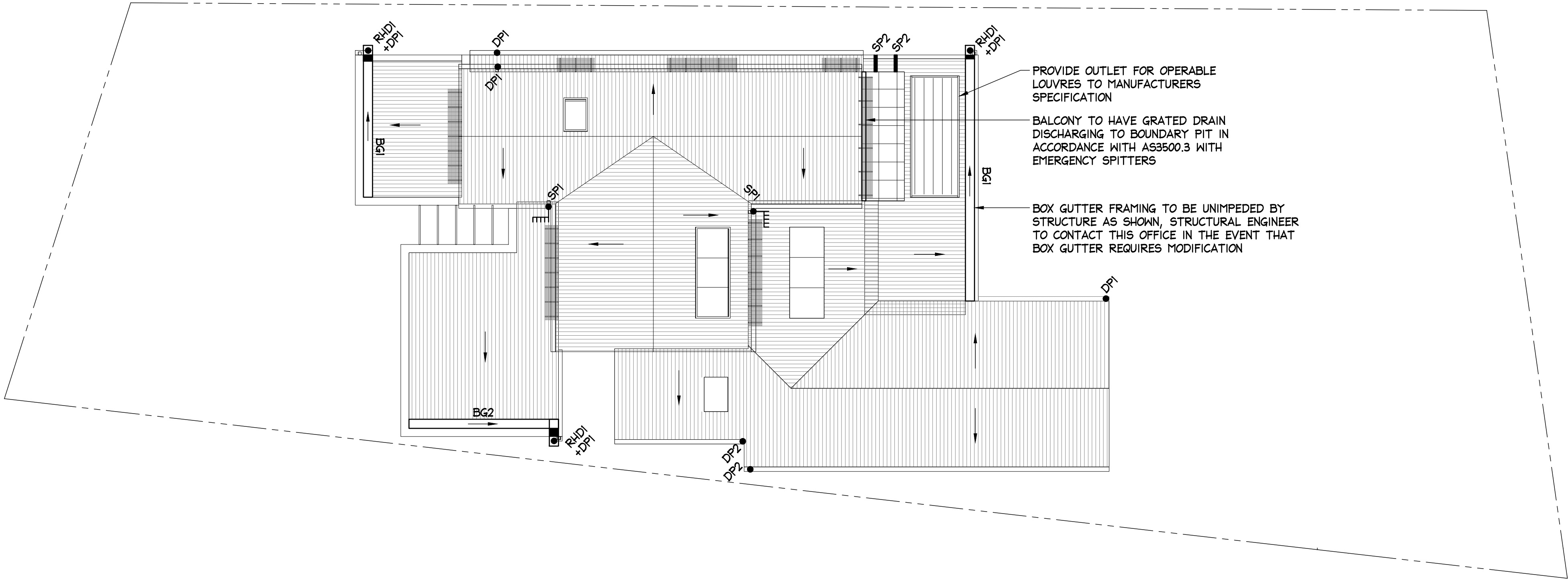
ISSUED FOR D.A.
SUBMISSION ONLY
NOT FOR
CONSTRUCTION

IF IN DOUBT ASK

Scale check - 100mm when printed to scale

																																																																																																																																																																																																																																																																																																																																																																																																																																																																																																																																																																																																																																																																																																																																																																																																																																																																																																																																																																																																																																																																																																																																																																																																																		</	
--	--	--	--	--	--	--	--	--	--	--	--	--	--	--	--	--	--	--	--	--	--	--	--	--	--	--	--	--	--	--	--	--	--	--	--	--	--	--	--	--	--	--	--	--	--	--	--	--	--	--	--	--	--	--	--	--	--	--	--	--	--	--	--	--	--	--	--	--	--	--	--	--	--	--	--	--	--	--	--	--	--	--	--	--	--	--	--	--	--	--	--	--	--	--	--	--	--	--	--	--	--	--	--	--	--	--	--	--	--	--	--	--	--	--	--	--	--	--	--	--	--	--	--	--	--	--	--	--	--	--	--	--	--	--	--	--	--	--	--	--	--	--	--	--	--	--	--	--	--	--	--	--	--	--	--	--	--	--	--	--	--	--	--	--	--	--	--	--	--	--	--	--	--	--	--	--	--	--	--	--	--	--	--	--	--	--	--	--	--	--	--	--	--	--	--	--	--	--	--	--	--	--	--	--	--	--	--	--	--	--	--	--	--	--	--	--	--	--	--	--	--	--	--	--	--	--	--	--	--	--	--	--	--	--	--	--	--	--	--	--	--	--	--	--	--	--	--	--	--	--	--	--	--	--	--	--	--	--	--	--	--	--	--	--	--	--	--	--	--	--	--	--	--	--	--	--	--	--	--	--	--	--	--	--	--	--	--	--	--	--	--	--	--	--	--	--	--	--	--	--	--	--	--	--	--	--	--	--	--	--	--	--	--	--	--	--	--	--	--	--	--	--	--	--	--	--	--	--	--	--	--	--	--	--	--	--	--	--	--	--	--	--	--	--	--	--	--	--	--	--	--	--	--	--	--	--	--	--	--	--	--	--	--	--	--	--	--	--	--	--	--	--	--	--	--	--	--	--	--	--	--	--	--	--	--	--	--	--	--	--	--	--	--	--	--	--	--	--	--	--	--	--	--	--	--	--	--	--	--	--	--	--	--	--	--	--	--	--	--	--	--	--	--	--	--	--	--	--	--	--	--	--	--	--	--	--	--	--	--	--	--	--	--	--	--	--	--	--	--	--	--	--	--	--	--	--	--	--	--	--	--	--	--	--	--	--	--	--	--	--	--	--	--	--	--	--	--	--	--	--	--	--	--	--	--	--	--	--	--	--	--	--	--	--	--	--	--	--	--	--	--	--	--	--	--	--	--	--	--	--	--	--	--	--	--	--	--	--	--	--	--	--	--	--	--	--	--	--	--	--	--	--	--	--	--	--	--	--	--	--	--	--	--	--	--	--	--	--	--	--	--	--	--	--	--	--	--	--	--	--	--	--	--	--	--	--	--	--	--	--	--	--	--	--	--	--	--	--	--	--	--	--	--	--	--	--	--	--	--	--	--	--	--	--	--	--	--	--	--	--	--	--	--	--	--	--	--	--	--	--	--	--	--	--	--	--	--	--	--	--	--	--	--	--	--	--	--	--	--	--	--	--	--	--	--	--	--	--	--	--	--	--	--	--	--	--	--	--	--	--	--	--	--	--	--	--	--	--	--	--	--	--	--	--	--	--	--	--	--	--	--	--	--	--	--	--	--	--	--	--	--	--	--	--	--	--	--	--	--	--	--	--	--	--	--	--	--	--	--	--	--	--	--	--	--	--	--	--	--	--	--	--	--	--	--	--	--	--	--	--	--	--	--	--	--	--	--	--	--	--	--	--	--	--	--	--	--	--	--	--	--	--	--	--	--	--	--	--	--	--	--	--	--	--	--	--	--	--	--	--	--	--	--	--	--	--	--	--	--	--	--	--	--	--	--	--	--	--	--	--	--	--	--	--	--	--	--	--	--	--	--	--	--	--	--	--	--	--	--	--	--	--	--	--	--	--	--	--	--	--	--	--	--	--	--	--	--	--	--	--	--	--	--	--	--	--	--	--	--	--	--	--	--	--	--	--	--	--	--	--	--	--	--	--	--	--	--	--	--	--	--	--	--	--	--	--	--	--	--	--	--	--	--	--	--	--	--	--	--	--	--	--	--	--	--	--	--	--	--	--	--	--	--	--	--	--	--	--	--	--	--	--	--	--	--	--	--	--	--	--	--	--	--	--	--	--	--	--	--	--	--	--	--	--	--	--	--	--	--	--	--	--	--	--	--	--	--	--	--	--	--	--	--	--	--	--	--	--	--	--	--	--	--	--	--	--	--	--	--	--	--	--	--	--	--	--	--	--	--	--	--	--	--	--	--	--	--	--	--	--	--	--	--	--	--	--	--	--	--	--	--	--	--	--	--	--	--	--	--	--	--	--	--	--	--	--	--	--	--	--	--	--	--	--	--	--	--	--	--	--	--	--	--	--	--	--	--	--	--	--	--	--	--	--	--	--	--	--	--	--	--	--	--	--	--	--	--	--	--	--	--	--	--	--	--	--	--	--	--	--	--	--	--	--	--	--	--	--	--	--	--	--	--	--	--	--	--	--	--	--	--	--	--	--	--	--	--	--	--	--	--	--	--	--	--	--	--	--	--	--	--	--	--	--	--	--	--	--	--	--	--	--	--	--	--	--	--	--	--	--	--	--	--	--	--	--	--	--	--	--	--	--	--	--	--	--	--	--	--	--	--	--	--	--	--	--	--	--	--	--	--	--	--	--	--	--	--	--	--	--	--	--	--	--	--	--	--	--	--	--	--	--	--	--	--	--	--	--	--	----	--

D A R I U S
A V E N U E



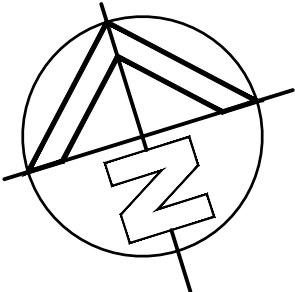
PROVIDE OUTLET FOR OPERABLE LOUVRES TO MANUFACTURERS SPECIFICATION

BALCONY TO HAVE GRATED DRAIN DISCHARGING TO BOUNDARY PIT IN ACCORDANCE WITH AS3500.3 WITH EMERGENCY SPITTERS

BOX GUTTER FRAMING TO BE UNIMPEDED BY STRUCTURE AS SHOWN, STRUCTURAL ENGINEER TO CONTACT THIS OFFICE IN THE EVENT THAT BOX GUTTER REQUIRES MODIFICATION

ROOF DRAINAGE PLAN

SCALE = 1 : 100



LEGEND

- DP1 • 100mm Ø DOWNPIPE TO DISCHARGE TO BOUNDARY PIT
- DP2 • 100mm Ø DOWNPIPE TO DISCHARGE TO RAINWATER TANK
- SP1 • E 100mm Ø DOWNPIPE WITH A SPREADER PIPE
- SP2 — OVERFLOW SPITTERS
REFER TO NOTE 'JS' ON DRAWING No. D01
- RUDI □ RAINHEAD WITH 100mm Ø DOWNPIPE
DISCHARGE TO RWT
- BG1,2 BOX GUTTER, REFER TO DETAILS

NOTE: ALL DRAINAGE LINE LOCATIONS ARE INDICATIVE ONLY.
LOCATION MAY VARY DUE TO CONSTRAINTS.

NOTES:

1. THIS DRAWING IS NOT TO BE USED FOR CONSTRUCTION IF THE ISSUE DATE PRECEDES THE ISSUE DATE ON THE ARCHITECTURAL DRAWINGS.
2. DO NOT SCALE FROM THIS DRAWING.
3. ALL DIMENSIONS ARE TO BE VERIFIED ON SITE BY THE BUILDER BEFORE COMMENCING WITH ASSOCIATED WORK.
4. FOR GENERAL NOTES REFER TO DRAWING NUMBER: D01.

Scale check - 100mm when printed to scale

A1



MINIMISE YOUR RISK
AND DIAL BEFORE YOU
DIG. - TEL. 1100

ISSUED FOR D.A.
SUBMISSION ONLY
NOT FOR
CONSTRUCTION

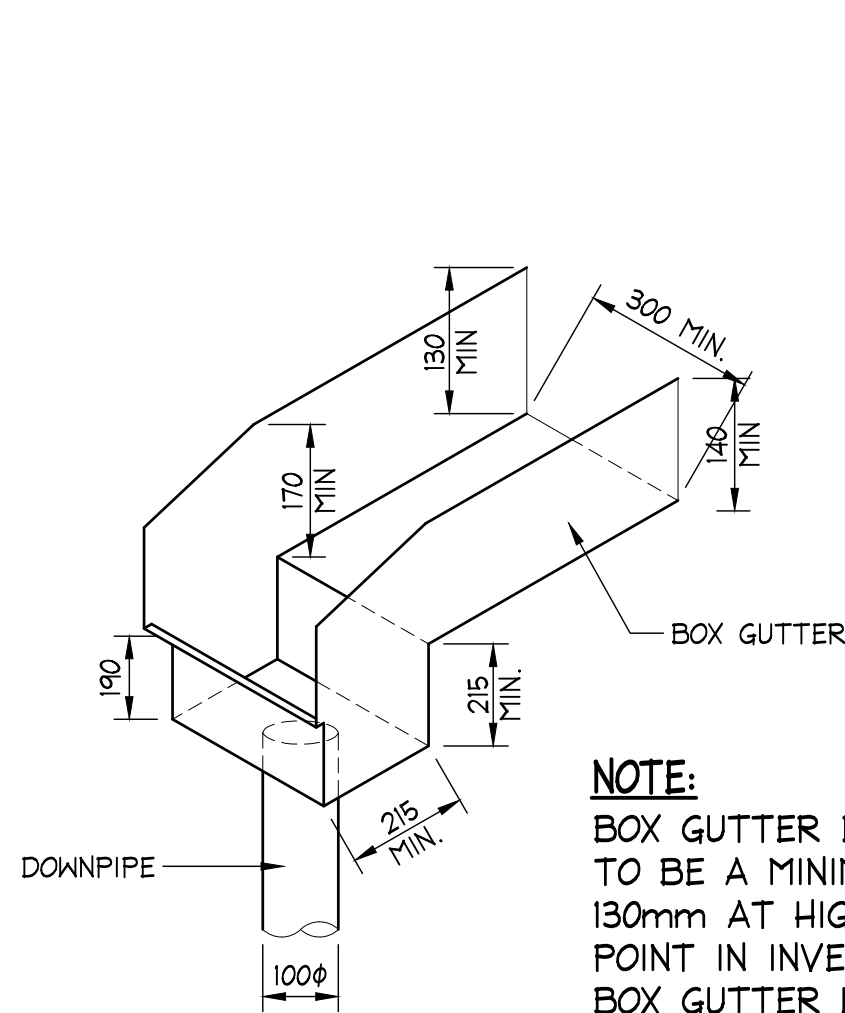
IF IN DOUBT ASK

																																																																																																																																																																																																																																																																																																																																																																																																																																																																																																																																																																																																																																																																																																																																																																																																																																																																																																																																																																																																																																																																																																																																																																																																																																																																																																																																																																																																																					</
--	--	--	--	--	--	--	--	--	--	--	--	--	--	--	--	--	--	--	--	--	--	--	--	--	--	--	--	--	--	--	--	--	--	--	--	--	--	--	--	--	--	--	--	--	--	--	--	--	--	--	--	--	--	--	--	--	--	--	--	--	--	--	--	--	--	--	--	--	--	--	--	--	--	--	--	--	--	--	--	--	--	--	--	--	--	--	--	--	--	--	--	--	--	--	--	--	--	--	--	--	--	--	--	--	--	--	--	--	--	--	--	--	--	--	--	--	--	--	--	--	--	--	--	--	--	--	--	--	--	--	--	--	--	--	--	--	--	--	--	--	--	--	--	--	--	--	--	--	--	--	--	--	--	--	--	--	--	--	--	--	--	--	--	--	--	--	--	--	--	--	--	--	--	--	--	--	--	--	--	--	--	--	--	--	--	--	--	--	--	--	--	--	--	--	--	--	--	--	--	--	--	--	--	--	--	--	--	--	--	--	--	--	--	--	--	--	--	--	--	--	--	--	--	--	--	--	--	--	--	--	--	--	--	--	--	--	--	--	--	--	--	--	--	--	--	--	--	--	--	--	--	--	--	--	--	--	--	--	--	--	--	--	--	--	--	--	--	--	--	--	--	--	--	--	--	--	--	--	--	--	--	--	--	--	--	--	--	--	--	--	--	--	--	--	--	--	--	--	--	--	--	--	--	--	--	--	--	--	--	--	--	--	--	--	--	--	--	--	--	--	--	--	--	--	--	--	--	--	--	--	--	--	--	--	--	--	--	--	--	--	--	--	--	--	--	--	--	--	--	--	--	--	--	--	--	--	--	--	--	--	--	--	--	--	--	--	--	--	--	--	--	--	--	--	--	--	--	--	--	--	--	--	--	--	--	--	--	--	--	--	--	--	--	--	--	--	--	--	--	--	--	--	--	--	--	--	--	--	--	--	--	--	--	--	--	--	--	--	--	--	--	--	--	--	--	--	--	--	--	--	--	--	--	--	--	--	--	--	--	--	--	--	--	--	--	--	--	--	--	--	--	--	--	--	--	--	--	--	--	--	--	--	--	--	--	--	--	--	--	--	--	--	--	--	--	--	--	--	--	--	--	--	--	--	--	--	--	--	--	--	--	--	--	--	--	--	--	--	--	--	--	--	--	--	--	--	--	--	--	--	--	--	--	--	--	--	--	--	--	--	--	--	--	--	--	--	--	--	--	--	--	--	--	--	--	--	--	--	--	--	--	--	--	--	--	--	--	--	--	--	--	--	--	--	--	--	--	--	--	--	--	--	--	--	--	--	--	--	--	--	--	--	--	--	--	--	--	--	--	--	--	--	--	--	--	--	--	--	--	--	--	--	--	--	--	--	--	--	--	--	--	--	--	--	--	--	--	--	--	--	--	--	--	--	--	--	--	--	--	--	--	--	--	--	--	--	--	--	--	--	--	--	--	--	--	--	--	--	--	--	--	--	--	--	--	--	--	--	--	--	--	--	--	--	--	--	--	--	--	--	--	--	--	--	--	--	--	--	--	--	--	--	--	--	--	--	--	--	--	--	--	--	--	--	--	--	--	--	--	--	--	--	--	--	--	--	--	--	--	--	--	--	--	--	--	--	--	--	--	--	--	--	--	--	--	--	--	--	--	--	--	--	--	--	--	--	--	--	--	--	--	--	--	--	--	--	--	--	--	--	--	--	--	--	--	--	--	--	--	--	--	--	--	--	--	--	--	--	--	--	--	--	--	--	--	--	--	--	--	--	--	--	--	--	--	--	--	--	--	--	--	--	--	--	--	--	--	--	--	--	--	--	--	--	--	--	--	--	--	--	--	--	--	--	--	--	--	--	--	--	--	--	--	--	--	--	--	--	--	--	--	--	--	--	--	--	--	--	--	--	--	--	--	--	--	--	--	--	--	--	--	--	--	--	--	--	--	--	--	--	--	--	--	--	--	--	--	--	--	--	--	--	--	--	--	--	--	--	--	--	--	--	--	--	--	--	--	--	--	--	--	--	--	--	--	--	--	--	--	--	--	--	--	--	--	--	--	--	--	--	--	--	--	--	--	--	--	--	--	--	--	--	--	--	--	--	--	--	--	--	--	--	--	--	--	--	--	--	--	--	--	--	--	--	--	--	--	--	--	--	--	--	--	--	--	--	--	--	--	--	--	--	--	--	--	--	--	--	--	--	--	--	--	--	--	--	--	--	--	--	--	--	--	--	--	--	--	--	--	--	--	--	--	--	--	--	--	--	--	--	--	--	--	--	--	--	--	--	--	--	--	--	--	--	--	--	--	--	--	--	--	--	--	--	--	--	--	--	--	--	--	--	--	--	--	--	--	--	--	--	--	--	--	--	--	--	--	--	--	--	--	--	--	--	--	--	--	--	--	--	--	--	--	--	--	--	--	--	--	--	--	--	--	--	--	--	--	--	--	--	--	--	--	--	--	--	--	--	--	--	--	--	--	--	--	--	--	--	--	--	--	--	--	--	--	--	--	--	--	--	--	--	--	--	--	--	--	--	--	--	--	--	--	--	--	--	--	--	--	--	--	--	--	--	--	--	--	--	--	--	--	--	--	--	--	--	--	--	--	--	--	--	--	--	--	--	--	--	--	--	--	--	--	--	--	--	--	--	--	--	--	--	--	--	--	--	--	--	--	--	--	--	--	--	--	--	--	--	--	--	--	--	--	--	--	--	--	--	--	--	--	--	--	--	--	--	--	--	--	--	--	--	--	--	--	--	--	--	--	--	--	--	--	--	--	--	--	--	--	--	--	--	--	--	--	--	--	--	--	--	--	--	--	--	--	--	--	--	--	--	--	--	--	--	--	--	--	--	--	--	--	--	--	--	--	--	--	--	--	--	--	--	--	--	--	--	--	--	--	--	--	--	--	--	--	--	--	--	--	--	--	--	--	--	--	--	--	--	--	--	--	--	--	--	--	--	--	--	--	--	--	--	--	--	--	--	--	--	--	--	--	--	--	--	--	--	--	--	--	--	--	--	--	--	--	--	--	--	--	--	--	--	--	--	--	--	--	--	--	--	--	--	--	--	--	--	--	--	--	--	--	--	--	--	--	--	--	--	--	--	--	--	--	--	----

NB Consulting Engineers

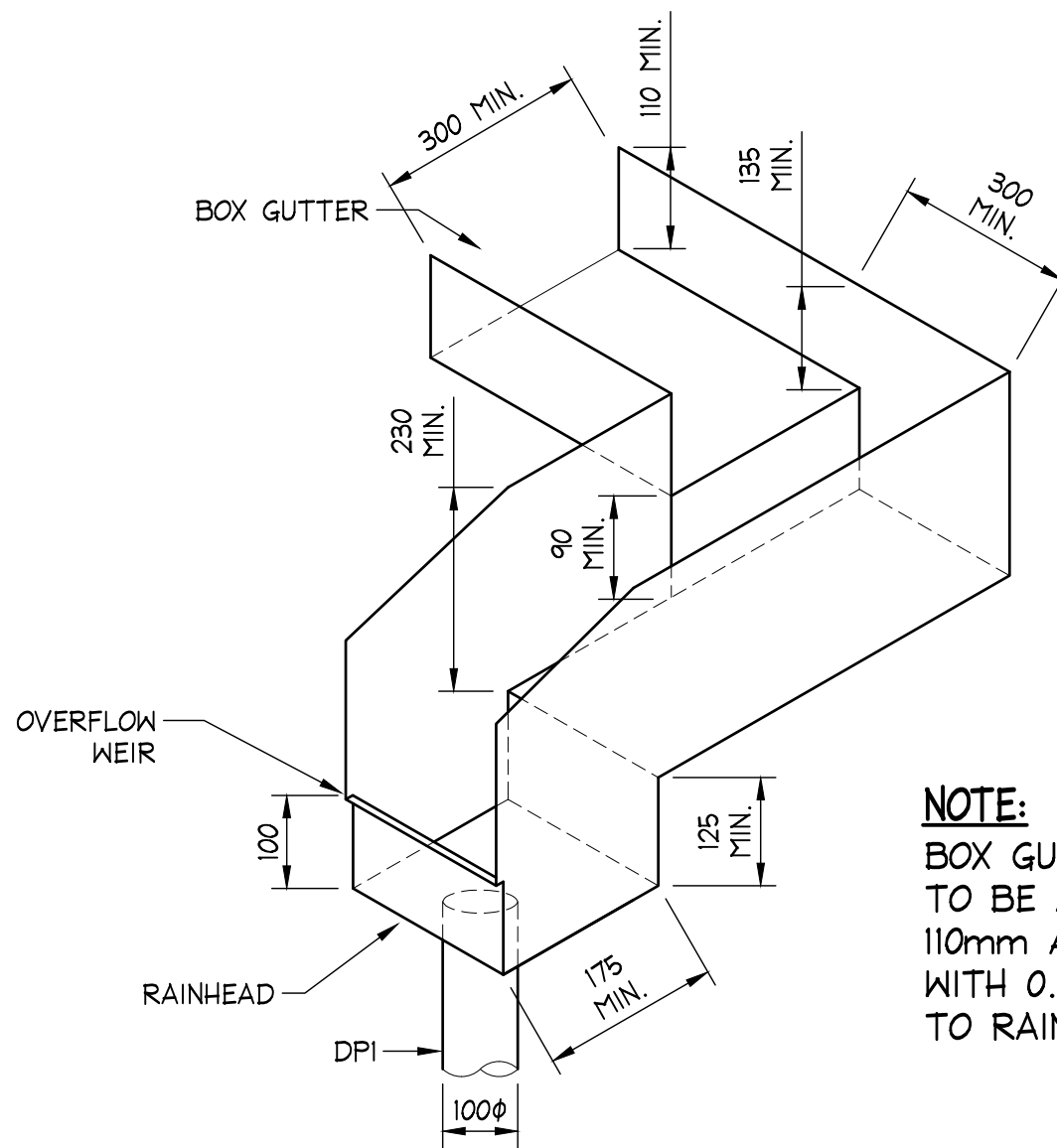
NOTES:

1. THIS DRAWING IS NOT TO BE USED FOR CONSTRUCTION IF THE ISSUE DATE PRECEDES THE ISSUE DATE ON THE ARCHITECTURAL DRAWINGS.
2. DO NOT SCALE FROM THIS DRAWING.
3. ALL DIMENSIONS ARE TO BE VERIFIED ON SITE BY THE BUILDER BEFORE COMMENCING WITH ASSOCIATED WORK.
4. FOR GENERAL NOTES REFER TO DRAWING NUMBER: D01.



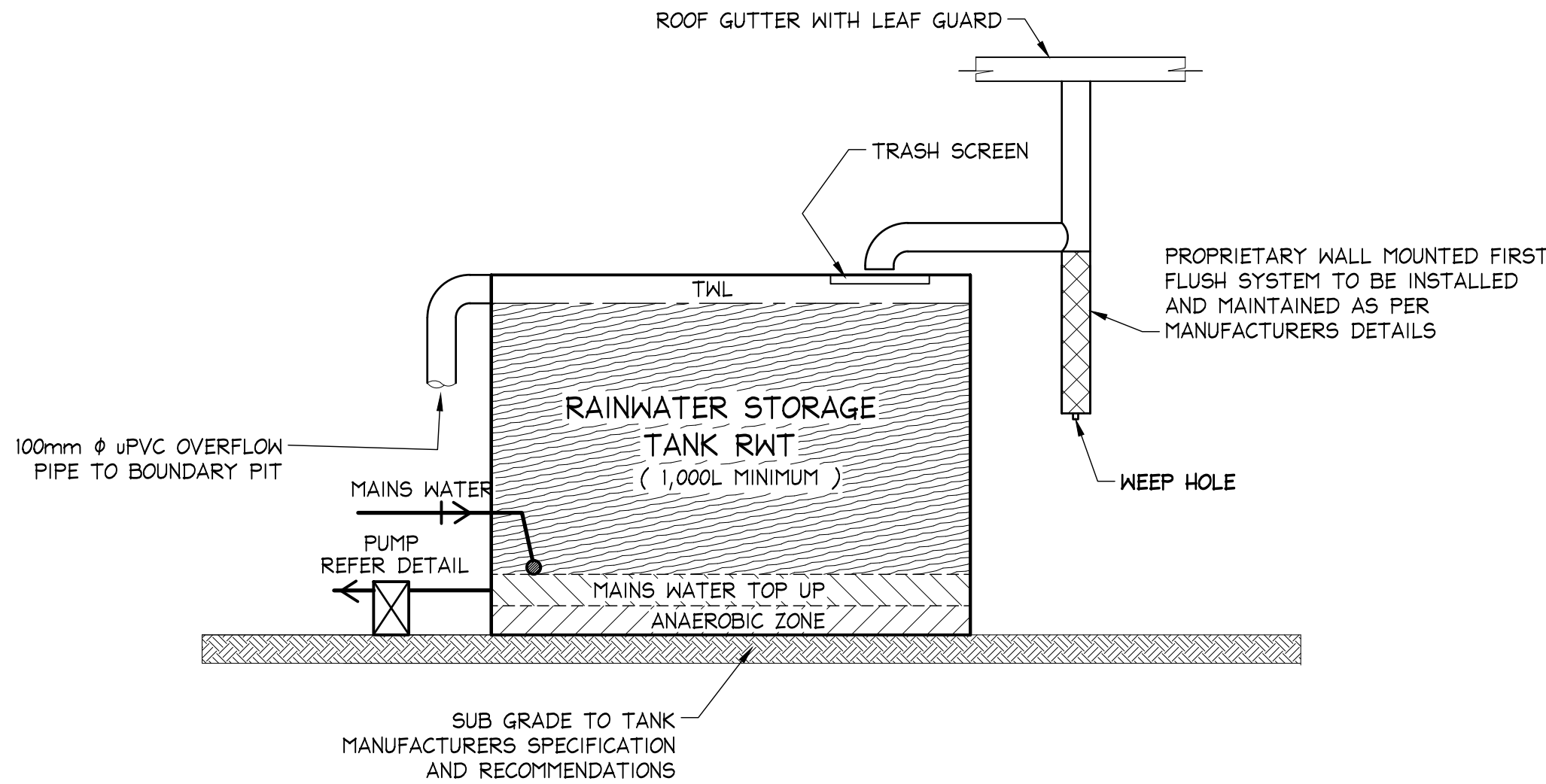
BOX GUTTER BG1 AND RAINHEAD RHD DETAIL

SCALE = NTS



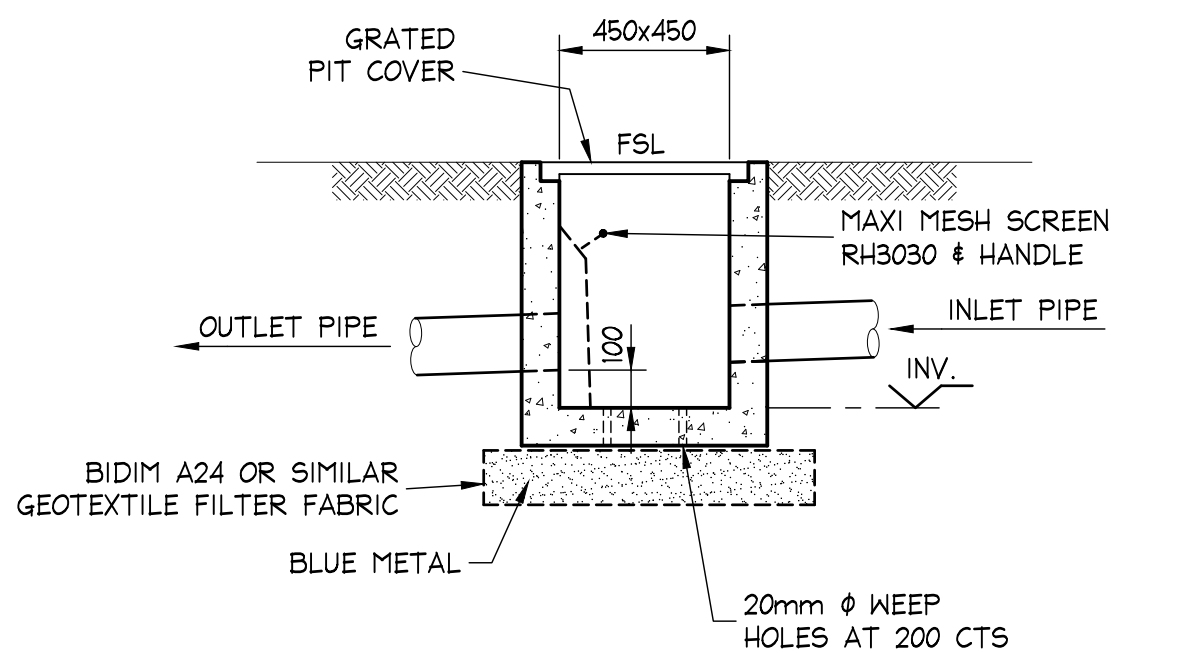
BOX GUTTER BG2 AND RAINHEAD RHD DETAIL

SCALE = NTS



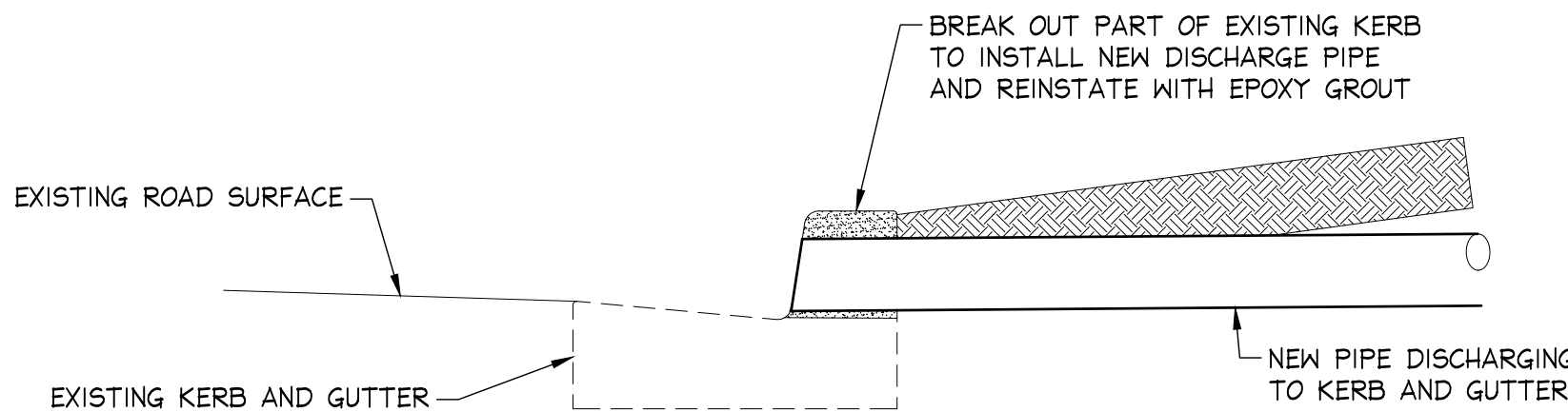
TYPICAL SECTION RAINWATER RE-USE TANK

NOT TO SCALE



450x450 PIT DETAIL

SCALE = 1 : 20



DETAIL OF NEW PIPE INTO EXISTING KERB AND GUTTER

SCALE = N.T.S.



MINIMISE YOUR RISK
AND DIAL BEFORE YOU
DIG. - TEL. 1100

ISSUED FOR D.A.
SUBMISSION ONLY
NOT FOR
CONSTRUCTION

IF IN DOUBT ASK

Scale check - 100mm when printed to scale

DOCUMENT CERTIFICATION				NB Consulting Engineers		Architect:	ACTION PLANS		Project:	ALTERATIONS & ADDITIONS 8 DARIUS AVE, NARRABEEN		Date:	JUNE '21	Design:	CF	Drawn:	LS
Date : 30 Jun '21 Michael Wachjo B.E.(Civil), MIEAust. (Director: NB Consulting Engineers)				Sydney: Ph: (02) 9984 7000 Suite 207, 30 Fisher Road Dee Why N.S.W. 2099 Gold Coast: Ph: (07) 5631 4744 30 Griffith Street Coolangatta QLD 4225 E : nb@nbconsulting.com.au W : www.nbconsulting.com.au		Client:		JARROD KELLY		Drawing Title:		STORMWATER DRAINAGE DETAILS SHEET		Job No:		161118	
14-06-21				A		ISSUE FOR D.A. SUBMISSION ONLY		LS		LG		Date:		Issue:		Description:	
The copyright of this drawing remains with Northern Beaches Consulting Engineers Pty Ltd. Trading as NB Consulting Engineers				By:		Review:		D04		A							

NB Consulting Engineers