

NOTE: CHECK & LOCATE DEPTH OF EXISTING MAINS & SERVICES PRIOR TO CONSTRUCTION OF STORMWATER SYSTEM AS VARIATIONS IN POSITION OF MAINS COULD AFFECT DRAINAGE CONSTRUCTION DETAILS.

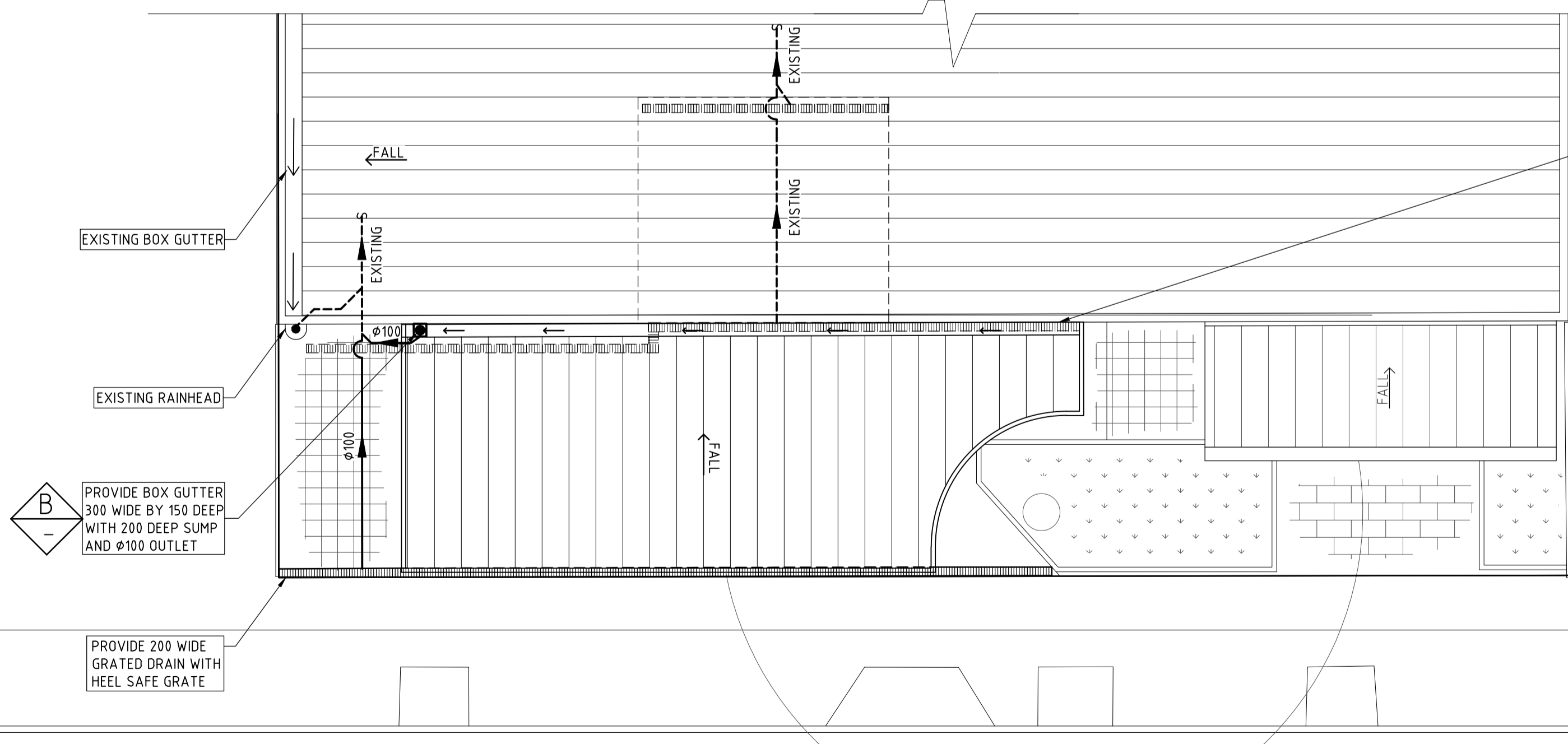
RETRACTABLE SHADES OVER GLAZED SHOPFRONT

PROVIDE 150 WIDE GRATED PEDESTRIAN ACCESS WITH HEEL SAFE GRATE

450 SQ. BOUNDARY PIT GRATE R.L. 1200 INVERT R.L. 1175 SUMP R.L. 1155 WITH TRASH SCREEN FOR WATER QUALITY

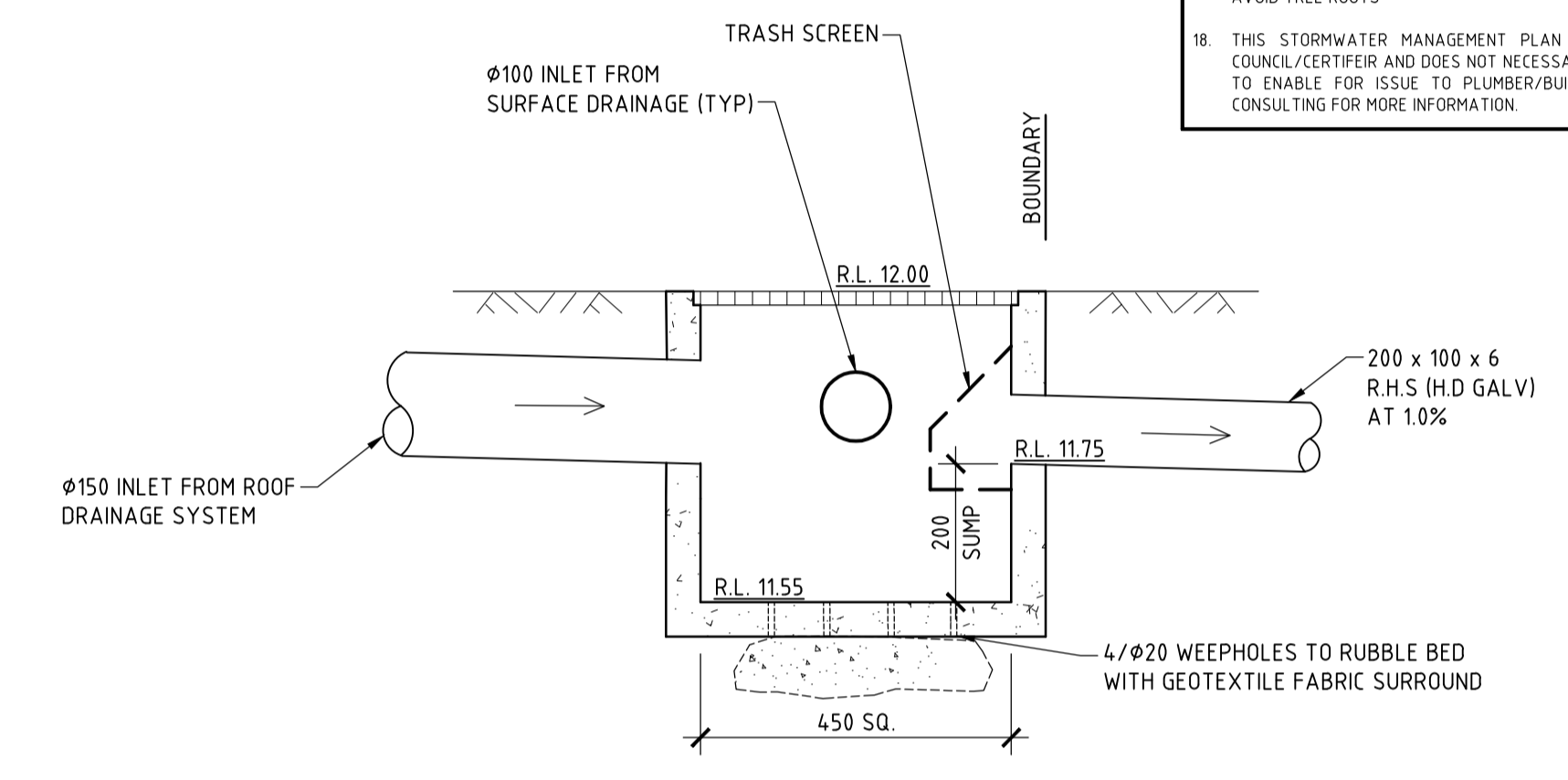
PROVIDE 100 WIDE GRATED DRAIN (TYP)

EXISTING BOX GUTTER WITH CONNECTION TO EXISTING SITE DRAINAGE SYSTEM (TYP)

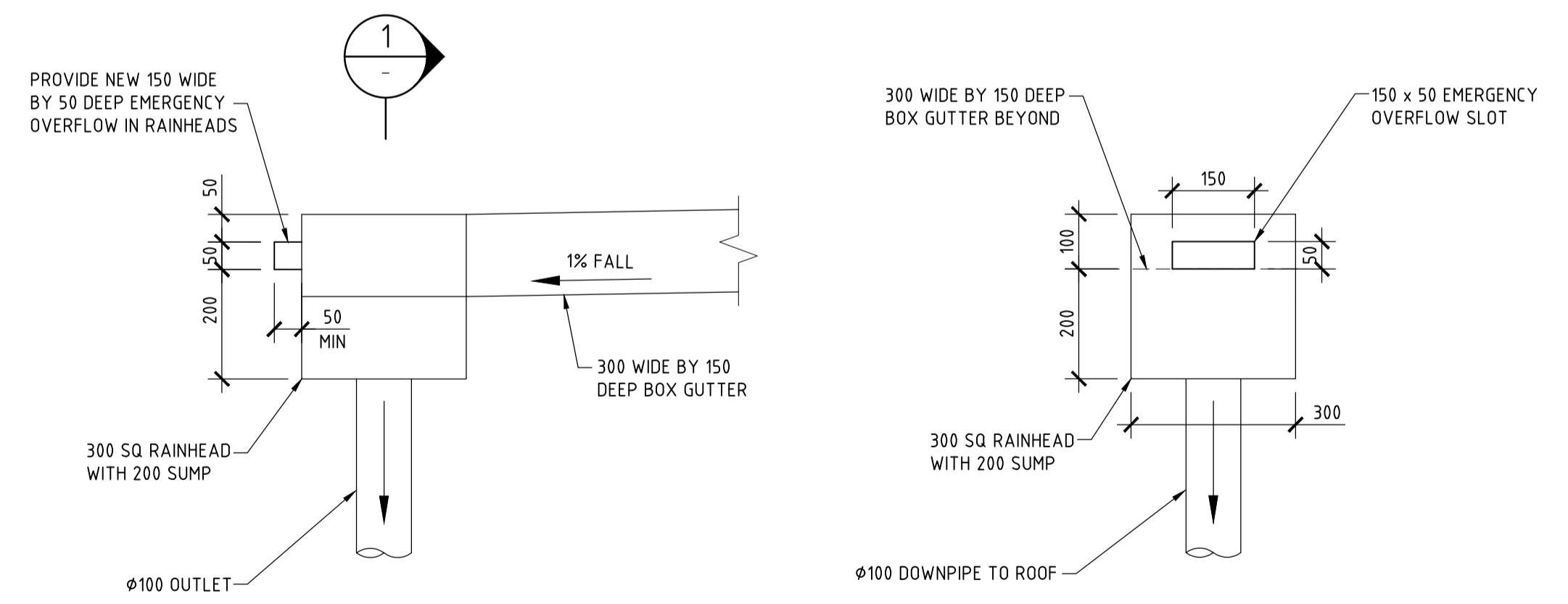


PROVIDE BOX GUTTER 300 WIDE BY 150 DEEP WITH 200 DEEP SUMP AND  $\phi 100$  OUTLET

PROVIDE 200 WIDE GRATED DRAIN WITH HEEL SAFE GRATE



DETAIL A  
SCALE 1:10  
SHOWING TYPICAL BOUNDARY PIT ARRANGEMENT



DETAIL B  
SCALE 1:10

PARTIAL SITE DRAINAGE PLAN  
SCALE 1:100

- DRAINAGE NOTES**
- + DENOTES EXISTING GROUND LEVEL
  - FALL STORMWATER PIPES AT 1% MIN. UNLESS OTHERWISE NOTED.
  - SUB-SOIL DRAINAGE TO BE CONNECTED TO THE SITE DRAINAGE SYSTEM AS NECESSARY.
  - SURFACE GRATES 300 SQ. UNLESS OTHERWISE NOTED.
  - ALL STORMWATER PIPES TO HAVE SOLVENT CEMENT WATERTIGHT JOINTS.
  - CHECK & LOCATE DEPTH OF EXISTING MAINS & SERVICES PRIOR TO CONSTRUCTION OF STORMWATER SYSTEM AS VARIATIONS IN POSITION OF MAINS COULD AFFECT DRAINAGE CONSTRUCTION DETAILS.
  - INSPECTIONS MUST BE UNDERTAKEN BY THIS OFFICE (BY PRIOR ARRANGEMENT WITH ENGINEER) DURING CONSTRUCTION TO ENABLE FULL CERTIFICATION UPON COMPLETION OF WORKS.
  - ALL CONSTRUCTION OF COUNCIL DRAINAGE WORKS TO COMPLY WITH COUNCIL STANDARD.
  - REMOVE REDUNDANT DRAINAGE PITS AND SEAL PIPES.
  - PIT BENCHING TO BE HALF THE OUTGOING PIPE DIAMETER. CONCRETE FOR BENCHING TO BE 20 MPa MASS CONCRETE.
  - APPROVED PRE-CAST PITS MAY BE USED.
  - ALL PIPES TO BE LAID ON COMPACTED FINE CRUSHED ROCK OR SAND BEDDING 75mm THICK & PIPES BACKFILLED WITH COMPACTED SAND TO 300mm ABOVE TOP OF PIPE, ELSE ATTACHED TO UNDERSIDE OF STRUCTURE AT 600mm c/c AS NECESSARY.
  - PIPE ROUTES SHOWN ARE INDICATIVE ONLY AND SHOULD BE AS NECESSARY ACCORDING TO SITE CONDITIONS, TREE POSITIONS ETC. CONFIRM SIGNIFICANT CHANGES IN PIPES SYSTEM DETAILS WITH SUPERVISING ENGINEER PRIOR TO COMMENCEMENT OF DRAINAGE CONSTRUCTION WORKS.
  - CONTRACTOR SHALL ENSURE THAT SERVICES TO BUILDINGS NOT AFFECTED BY THE WORKS ARE NOT DISRUPTED. CONTRACTOR SHALL CONSTRUCT TEMPORARY SERVICES TO MAINTAIN EXISTING SUPPLY TO BUILDINGS WHERE REQUIRED. ONCE WORKS ARE COMPLETE AND COMMISSIONED THE CONTRACTOR SHALL REMOVE ALL TEMPORARY SERVICES AND MAKE GOOD ALL DISTURBED AREAS.
  - STORMWATER SYSTEM REQUIRES SIGNIFICANT MAINTENANCE DUE TO POTENTIAL HIGH POLLUTANT LOAD. FILTERS AND POLLUTANT TRAPS SHOULD BE CHECKED AFTER LARGE STORM EVENTS AND CLEANED EVERY 6 MONTHS.
  - PLUMBING AND DRAINAGE WORKS TO COMPLY WITH AS-3500, THE NATIONAL DRAINAGE & PLUMBING CODE.
  - WHERE POSSIBLE DRAINAGE LINES SHALL BE LAID IN AREAS PREVIOUSLY DISTURBED BY OTHER SITE WORKS AND FOLLOW TOPOGRAPHICAL FEATURES TO REDUCE IMPACT AND AVOID TREE ROOTS.
  - THIS STORMWATER MANAGEMENT PLAN HAS BEEN PREPARED FOR SUBMISSION TO COUNCIL/CERTIFIER AND DOES NOT NECESSARILY CONTAIN ALL APPROPRIATE INFORMATION TO ENABLE FOR ISSUE TO PLUMBER/BUILDER FOR CONSTRUCTION. CONTACT TAYLOR CONSULTING FOR MORE INFORMATION.

ISSUE DATE	REVISION

TITLE STORMWATER MANAGEMENT PLAN 24 HOWARD AVENUE, DEE WHY			
DRAWN TDR	DATE 15 AUGUST 2024	CHECKED <i>[Signature]</i>	SCALE @ A1 1:100
ENGINEER JPL	BE Civil (Hons) MIE Aust.		1:10

**TAYLOR CONSULTING**  
CIVIL & STRUCTURAL ENGINEERS

DRAWING NO.  
**STORM-1**