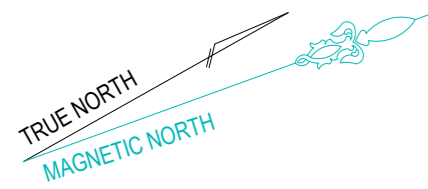
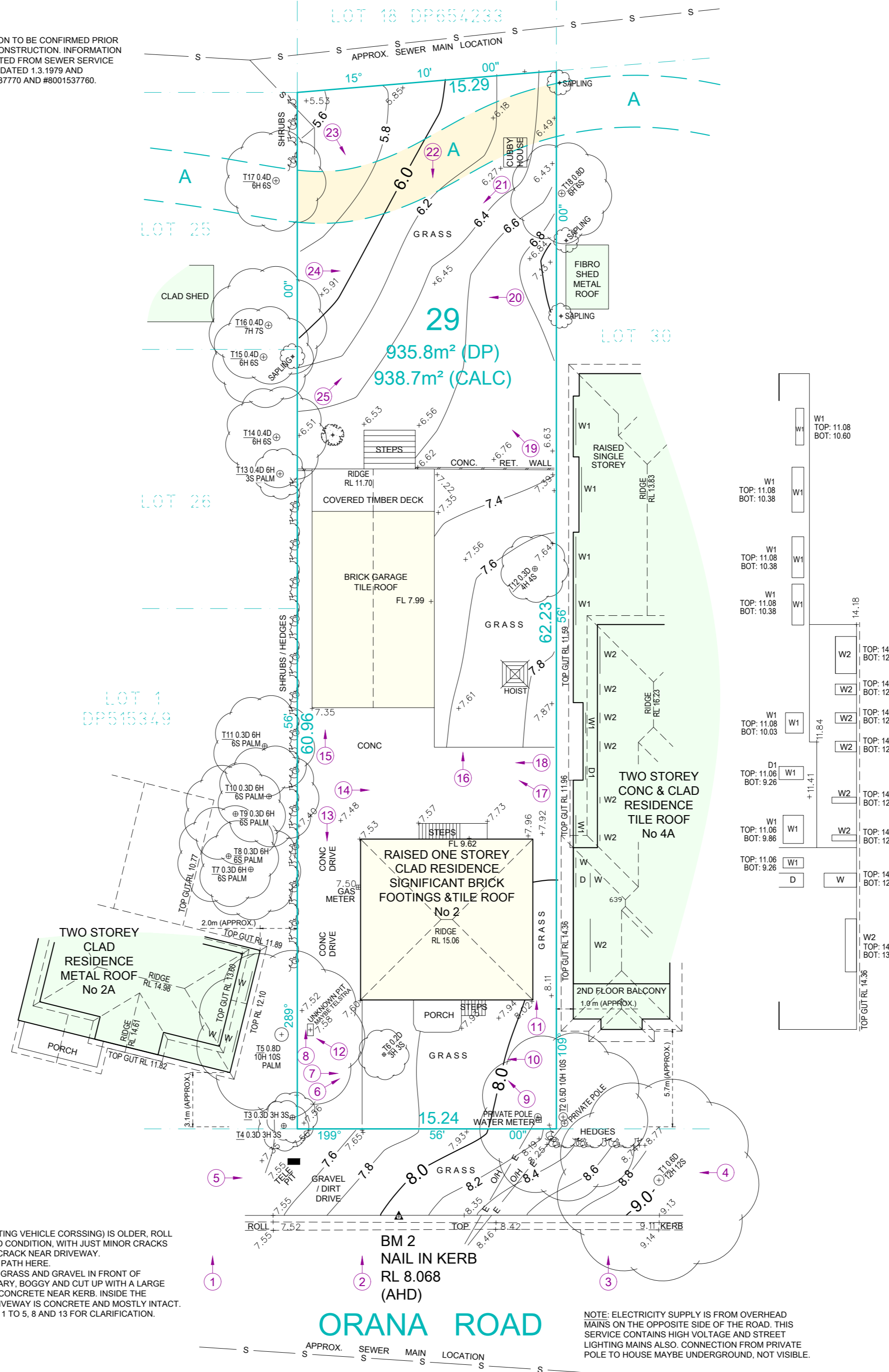


A: EASEMENT TO DRAIN WATER 10ft WIDE (3.05m)

BEARINGS SHOWN HAVE BEEN DEDUCED FROM LAND REGISTRY SERVICES PLANS AND ARE RELATED TO MAGNETIC NORTH. TRUE NORTH IS APPROXIMATE ONLY. FURTHER INVESTIGATION WILL BE REQUIRED TO DETERMINE ACCURATE TRUE NORTH.



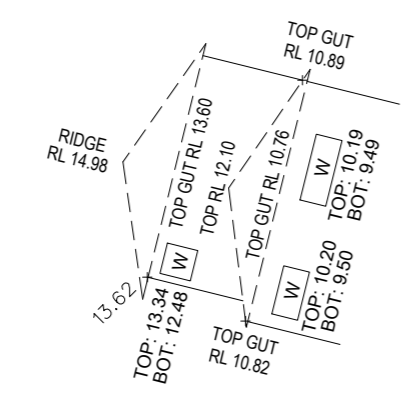
NOTE: SEWER LOCATION TO BE CONFIRMED PRIOR TO EXCAVATION OR CONSTRUCTION. INFORMATION SHOWN IS INTERPOLATED FROM SEWER SERVICE DIAGRAM No. 0404324, DATED 1.3.1979 AND APPLICATIONS #8001537770 AND #8001537760.



W1	TOP: 11.08	W1	TOP: 11.08
W1	BOT: 10.60	W1	BOT: 10.60
W1	TOP: 11.08	W1	TOP: 11.08
W1	BOT: 10.38	W1	BOT: 10.38
W1	TOP: 11.08	W1	TOP: 11.08
W1	BOT: 10.38	W1	BOT: 10.38
W1	TOP: 11.08	W1	TOP: 11.08
W1	BOT: 10.38	W1	BOT: 10.38
W2	TOP: 14.18	W2	TOP: 14.18
W2	BOT: 12.94	W2	BOT: 12.94
W2	TOP: 14.17	W2	TOP: 14.17
W2	BOT: 12.93	W2	BOT: 12.93
W2	TOP: 14.17	W2	TOP: 14.17
W2	BOT: 12.93	W2	BOT: 12.93
W2	TOP: 14.17	W2	TOP: 14.17
W2	BOT: 12.73	W2	BOT: 12.73
W2	TOP: 14.17	W2	TOP: 14.17
W2	BOT: 12.73	W2	BOT: 12.73
W2	TOP: 14.19	W2	TOP: 14.19
W2	BOT: 13.52	W2	BOT: 13.52
W2	TOP: 14.20	W2	TOP: 14.20
W2	BOT: 13.52	W2	BOT: 13.52

LEGEND

- HOT WATER TANK
- WATER METER
- SEWER MAINTENANCE SHAFT
- SEWER INSPECTION SHAFT
- VEHICLE CROSSING
- KERB BACK OF KERB
- KERB INVERT OF KERB
- KERB LIP OF GUTTER
- KERB INLET PIT
- LIGHT POLE
- ELECTRICITY POLE
- ELECTRICITY PILLAR
- HYDRANT
- STOP VALVE
- KERB OUTLET
- SERVICE CONDUIT
- TREE (DIAM/HEIGHT)
- GARDEN BED
- SHRUB
- DENOTES PHOTO POINT
- DENOTES TELEPHONE BOOTH



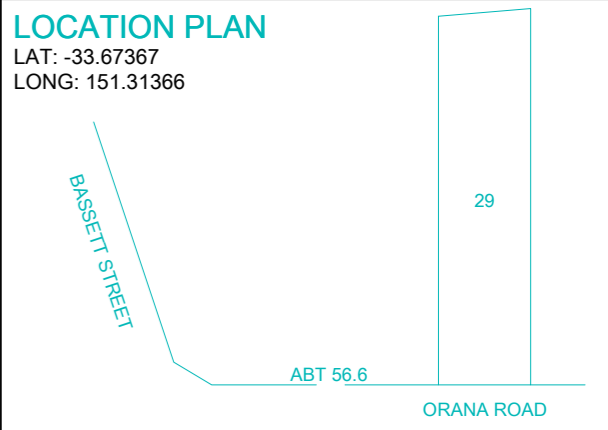
NOTE: KERB (INCORPORATING VEHICLE CROSSING) IS OLDER, ROLL TOP KERB, IN GOOD CONDITION, WITH JUST MINOR CRACKS AND ONE LARGER CRACK NEAR DRIVEWAY. THERE IS NO FOOT PATH HERE. DRIVEWAY IS DIRT, GRASS AND GRAVEL IN FRONT OF PROPERTY BOUNDARY, BOGGY AND CUT UP WITH A LARGE PIECE OF BROKEN CONCRETE NEAR KERB. INSIDE THE PROPERTY THE DRIVEWAY IS CONCRETE AND MOSTLY INTACT. REFER TO PHOTOS 1 TO 5, 8 AND 13 FOR CLARIFICATION.

NOTE: ELECTRICITY SUPPLY IS FROM OVERHEAD MAINS ON THE OPPOSITE SIDE OF THE ROAD. THIS SERVICE CONTAINS HIGH VOLTAGE AND STREET LIGHTING MAINS ALSO. CONNECTION FROM PRIVATE POLE TO HOUSE MAYBE UNDERGROUND, NOT VISIBLE.

PROPERTY BOUNDARIES HAVE BEEN DETERMINED BY FIELD SURVEY

BRENDON GILBERD
REGISTERED SURVEYOR - 10037
DATED 28-06-24

RESIDENTIAL ENGINEERING
NSW
Level 2, 7375 Dumares Street, WENTWORTHVILLE, NSW 2145
Unit 8, 12 Indrill Road, PORT MACQUARIE, NSW 2444
+61 2 9961 5414 | info@reseng.com.au | www.residentialengineering.com.au



F		
E		
D		
C		
B		
A	BOUNDARY IDENT	28/06/2024
No.	AMENDMENT	DATE

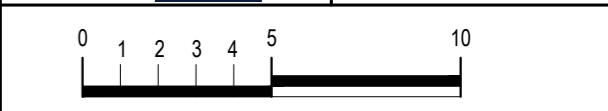
CONTOURS SHOWN HAVE BEEN INTERPOLATED FROM SPOT LEVELS TAKEN ON-SITE AND ARE A REPRESENTATION OF THE TOPOGRAPHY ONLY. DIMENSIONS AND AREAS HAVE BEEN DETERMINED FROM PLANS MADE AVAILABLE AT LRS, NSW AND ARE SUBJECT TO FINAL SURVEY. SERVICES SHOWN HAVE BEEN LOCATED WHERE POSSIBLE BY FIELD SURVEY. PRIOR TO ANY SITE WORKS, THE RELEVANT AUTHORITY SHOULD BE CONTACTED TO ESTABLISH ACCURATE POSITION AND DEPTH OF ANY SERVICES. DIMENSIONS OF ANY TREES SHOWN ON THE PLAN ARE APPROXIMATE



DETAIL & CONTOUR SURVEY

LOT 29 SEC E DP 6195
AT NO. 2 ORANA ROAD, MONA VALE

CLIENT:		REF:	MT0293
---------	--	------	--------



DRAWN: TN	JOB 3.22.4311.3	DATE: 30.06.2024
CHECKED: PAS	FILE NAME 3.22.4311.3	DATUM: AHD



DATUM OF LEVELS: AUSTRALIAN HEIGHT DATUM
ORIGIN OF LEVELS: PM 45928 RL 4.898
SOURCE OF LEVELS: SCIMS

ORANA ROAD

APPROX. SEWER MAIN LOCATION