

FOR DEVELOPMENT APPLICATION

ARCHITECT

CHROFI

3/1 THE CORSO MANLY NSW 2095 AUSTRALIA
T +61 2 8096 8500 E info@chrofi.com
CHOI ROPHA FIGHERA P/L ACN 144 714 885 ATF CHOI ROPHA FIGHERA UNIT TRUST T/A CHROFI ABN 22 365 257 107 NOMINATED ARCHITECT JOHN CHOI 8706 TAI ROPHA 6566 STEVEN FIGHERA 6609
THIS DRAWING SHOULD BE READ IN CONJUNCTION WITH ALL RELEVANT CONTRACTS, SPECIFICATION, REPORT AND DRAWINGS. DO NOT SCALE DRAWINGS. DIMENSIONS GOVERN. VERIFY ALL DIMENSIONS ON SITE BEFORE CONSTRUCTION. COPYRIGHT OF THIS DRAWING IS VESTED IN CHROFI.

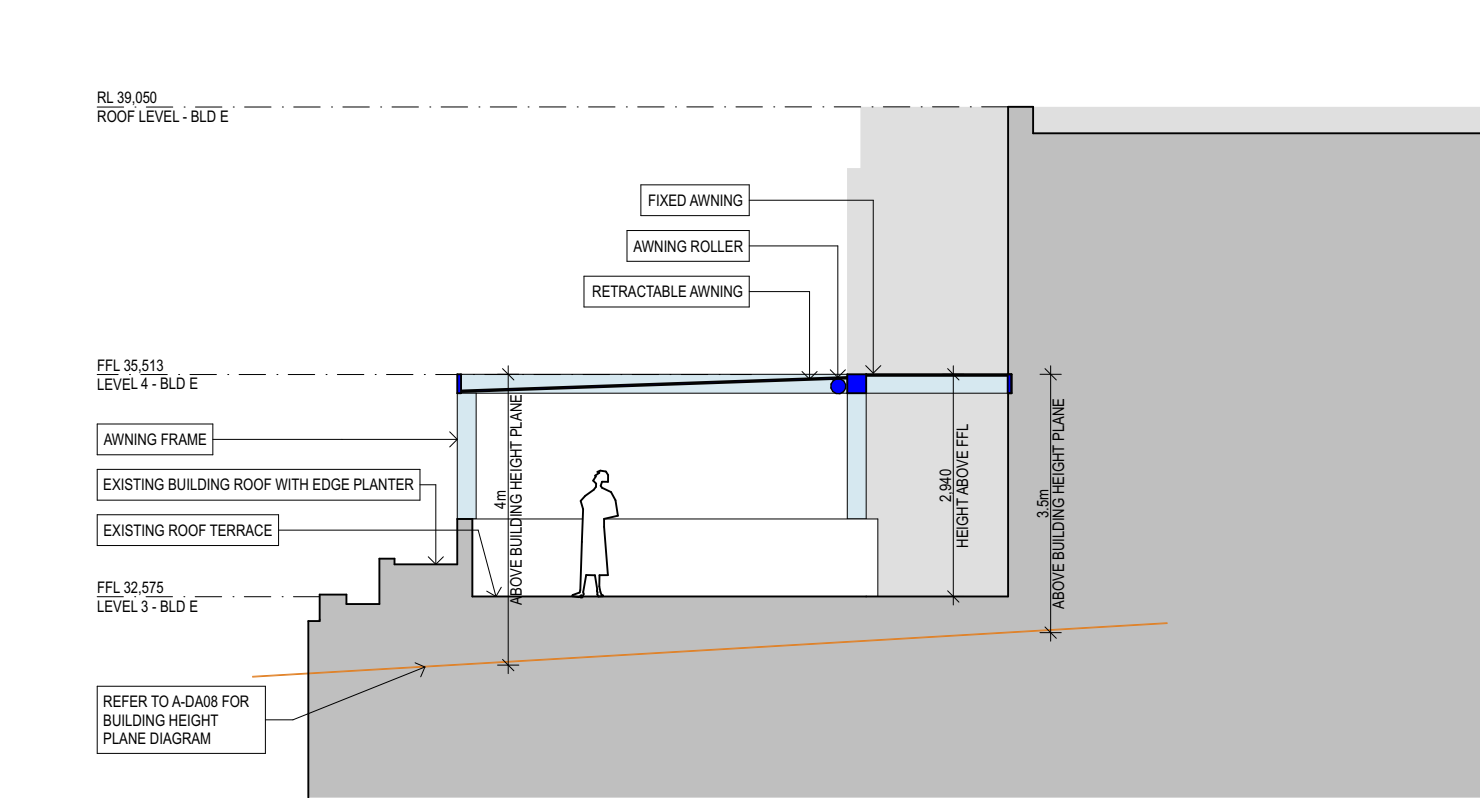
REV	DATE	ISSUE	REV	DATE	ISSUE
A	6/17/2021	FOR DEVELOPMENT APPLICATION			
B	7/20/2021	FOR DEVELOPMENT APPLICATION			
C	9/1/2021	FOR DEVELOPMENT APPLICATION			
D	9/24/2021	FOR DEVELOPMENT APPLICATION			

PROJECT
Watermark Freshwater - Building E Awnings
80 Evans Street, Freshwater NSW 2096

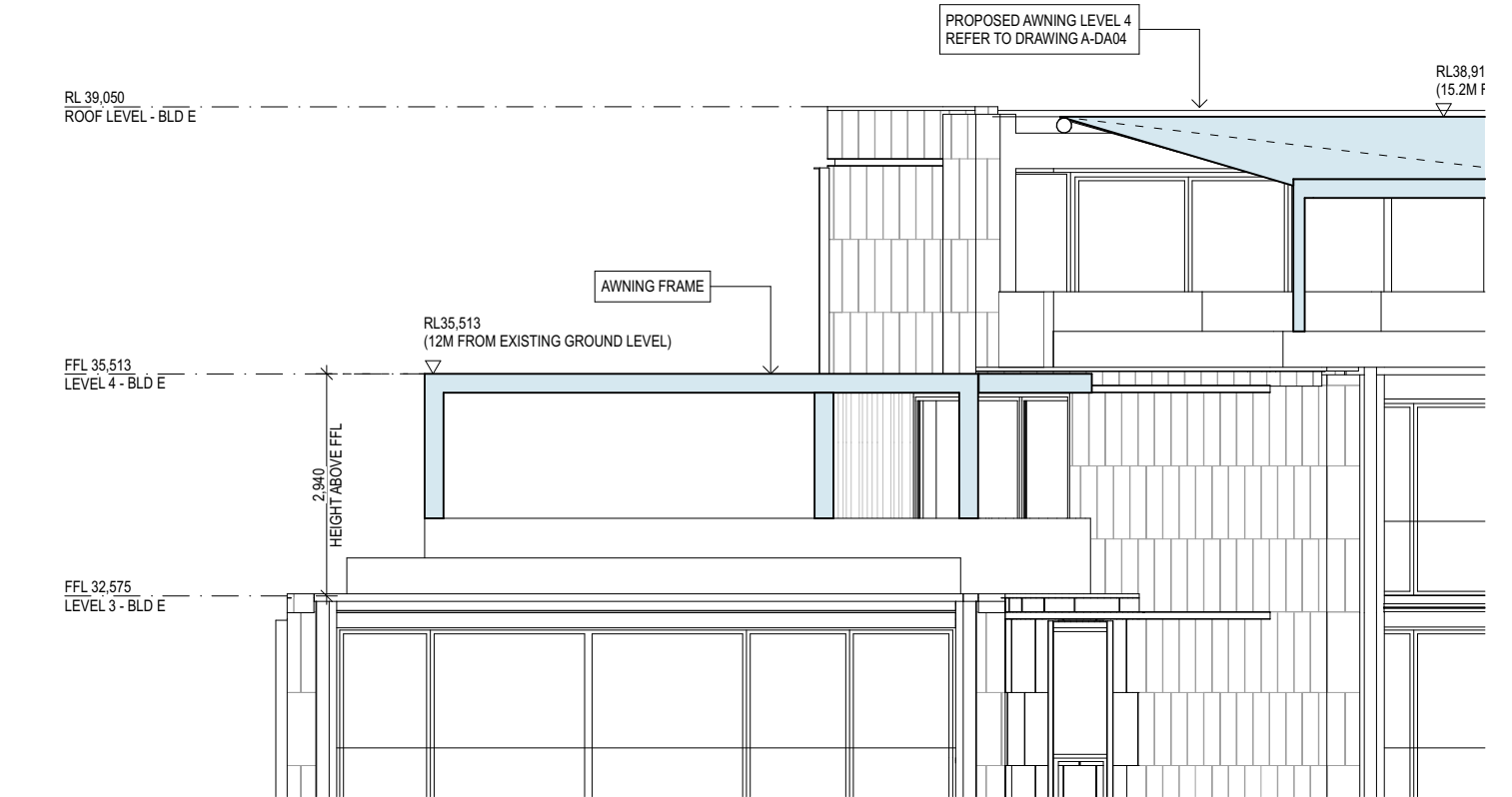
PROJECT NUMBER	PLOT DATE	DRAWN	CHECKED	SHEET SCALE	SHEET SIZE	NORTH
1354	9/24/2021	CL	FR	1:500	A3	

SHEET TITLE
SITE PLAN

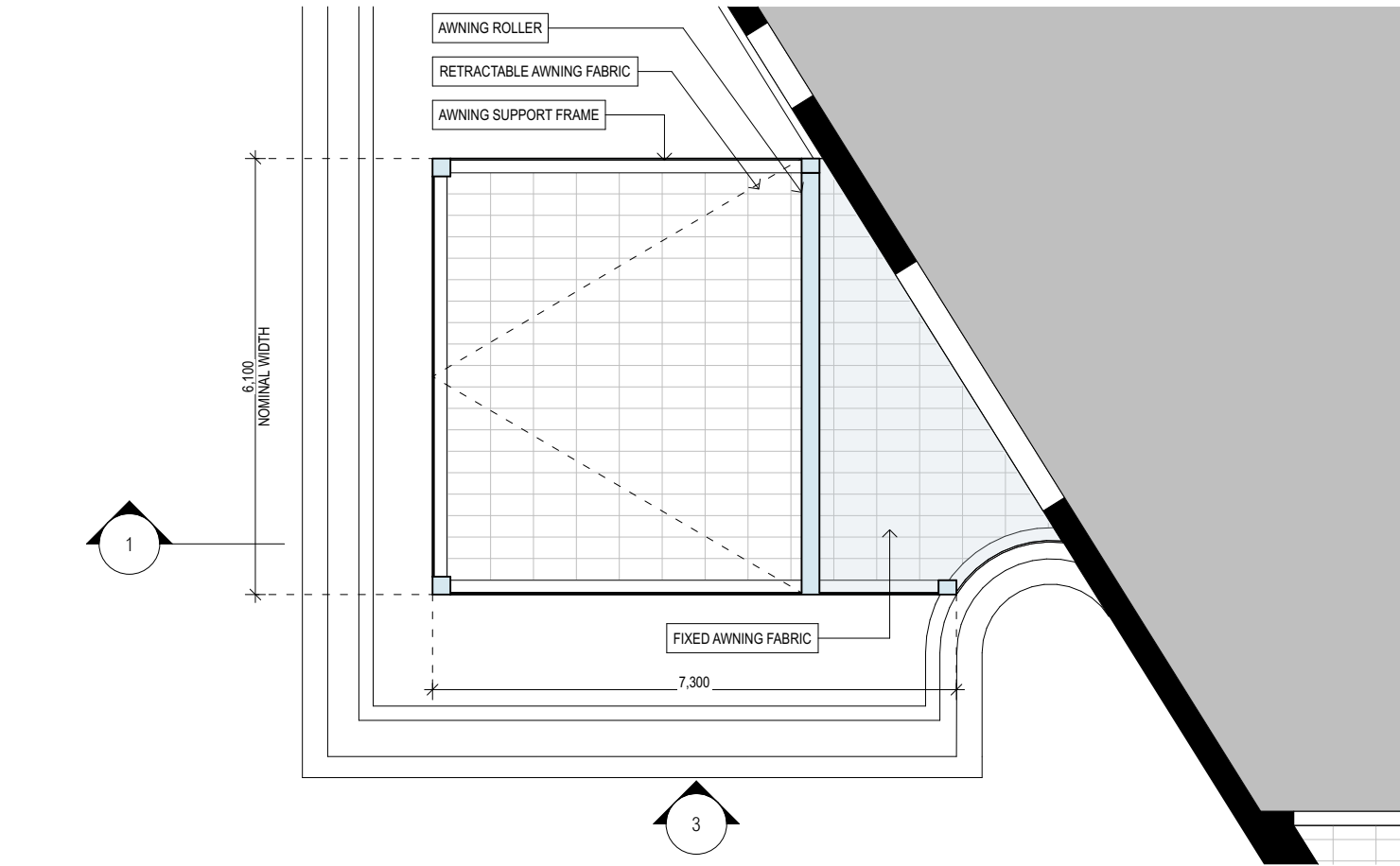
SHEET NUMBER	REVISION
A-DA01	D



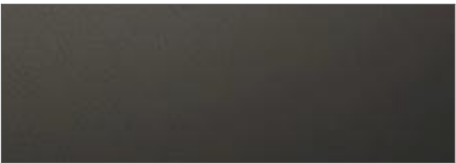
1
-
AWNING BLD-E LEVEL 3 SECTION
1:100



3
-
AWNING BLD-E LEVEL 3 ELEVATION
1:100



2
-
AWNING BLD-E LEVEL 3 PLAN
1:100

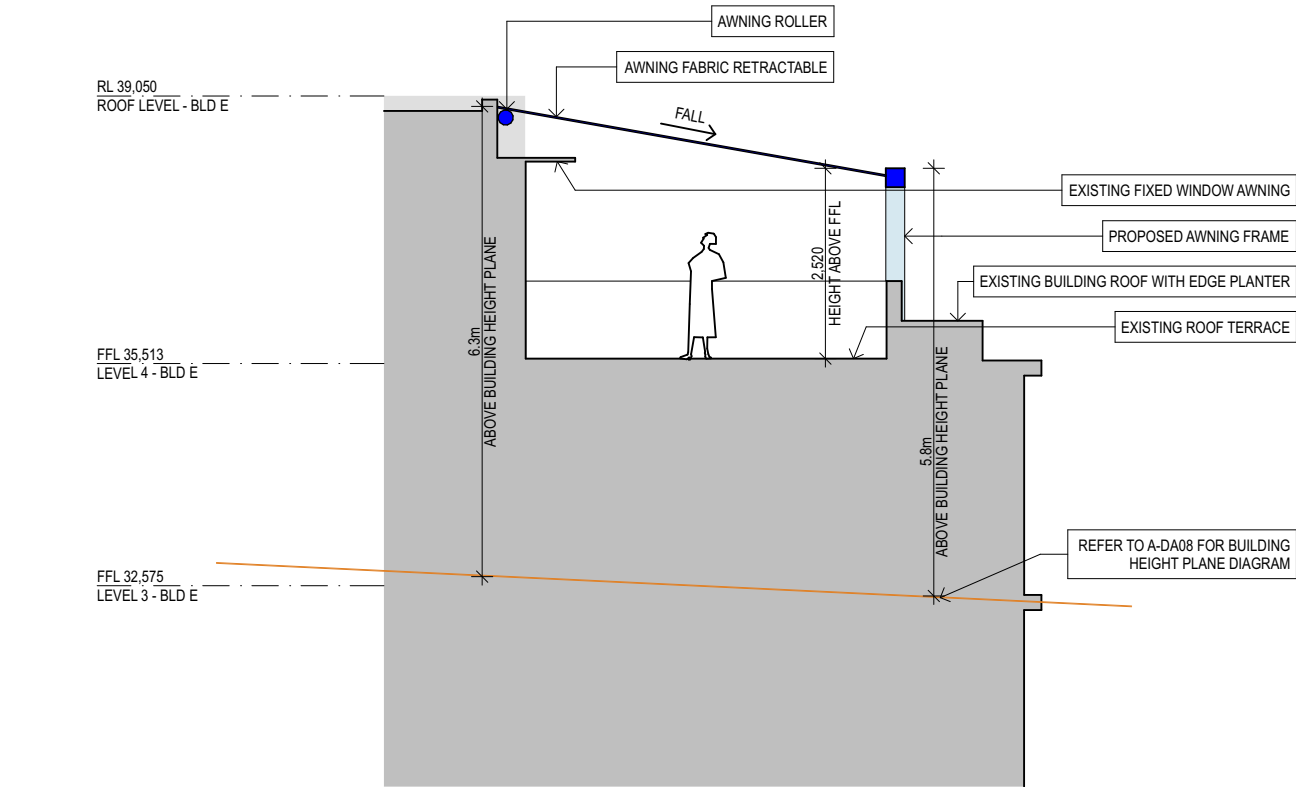


AWNING FRAME: ANODIZED ALUMINIUM
(TO MATCH BLD E DARK FRAME DETAILS)

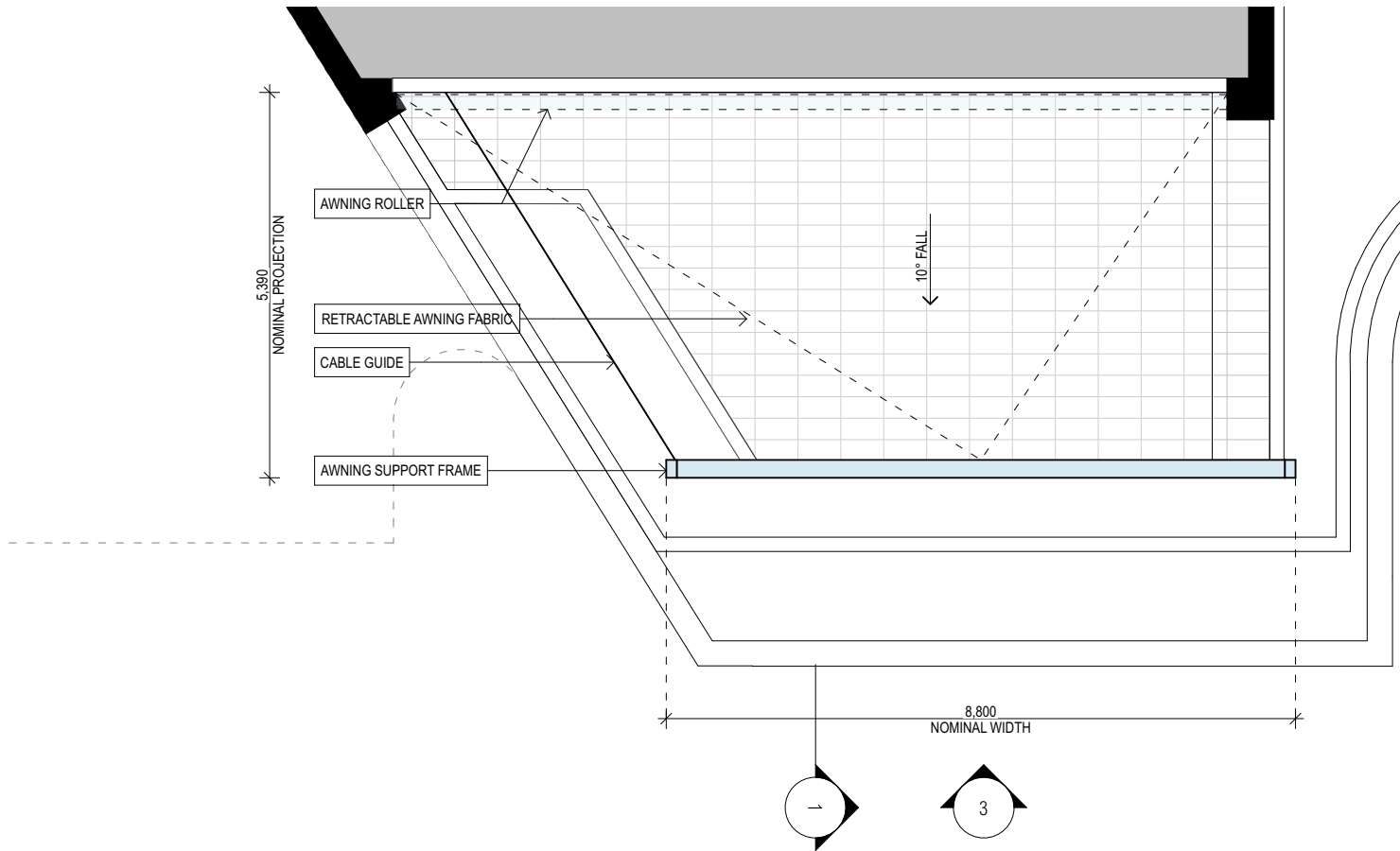


AWNING FABRIC: BEIGE

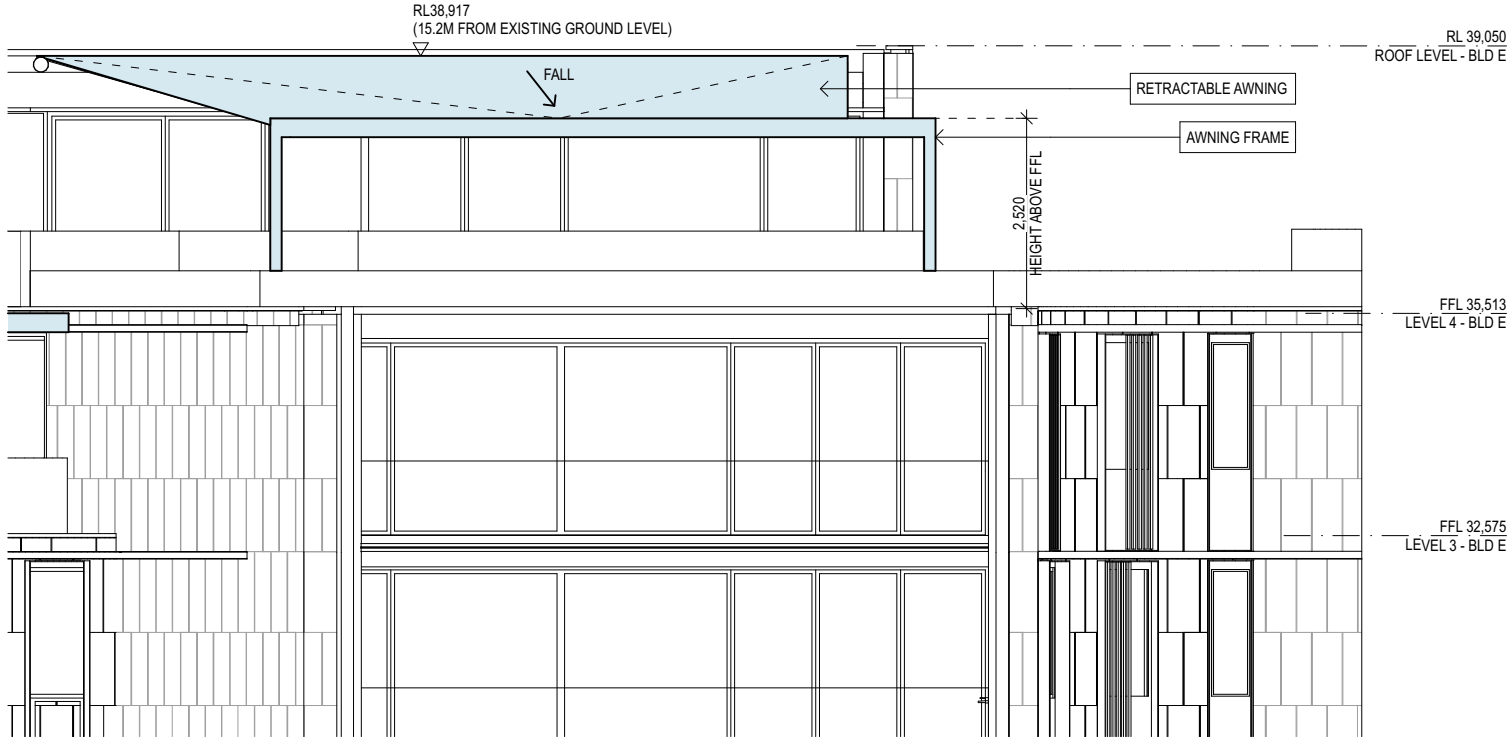
FOR DEVELOPMENT APPLICATION



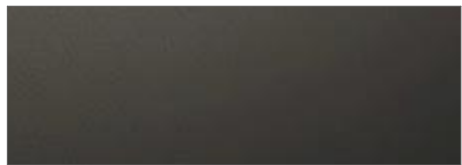
1
-
AWNING BLD-E LEVEL 4 SECTION
1:100



2
-
AWNING BLD-E LEVEL 4 PLAN
1:100



3
-
AWNING BLD-E LEVEL 4 ELEVATION
1:100



AWNING FRAME: ANODIZED ALUMINIUM
(TO MATCH BLD E DARK FRAME DETAILS)



AWNING FABRIC: BEIGE

FOR DEVELOPMENT APPLICATION

ARCHITECT

CHROFI

3/1 THE CORSO MANLY NSW 2095 AUSTRALIA
T +61 2 8096 8500 E info@chrofi.com
CHOI ROPHA FIGHERA P/L ACN 144 714 885 ATF CHOI ROPHA FIGHERA UNIT TRUST T/A CHROFI ABN 22 365 257 187 NOMINATED ARCHITECT JOHN CHOI 8706 TAI ROPHA 6566 STEVEN FIGHERA 6609
THIS DRAWING SHOULD BE READ IN CONJUNCTION WITH ALL RELEVANT CONTRACTS, SPECIFICATION, REPORT AND DRAWINGS. DO NOT SCALE DRAWINGS. DIMENSIONS GOVERN. VERIFY ALL DIMENSIONS ON SITE BEFORE CONSTRUCTION. COPYRIGHT OF THIS DRAWING IS VESTED IN CHROFI.

REV	DATE	ISSUE
A	17/6/21	FOR DEVELOPMENT APPLICATION
B	20/7/21	FOR DEVELOPMENT APPLICATION
C	1/9/21	FOR DEVELOPMENT APPLICATION
D	24/9/21	FOR DEVELOPMENT APPLICATION
E	22/2/22	FOR DEVELOPMENT APPLICATION

REV DATE ISSUE

PROJECT

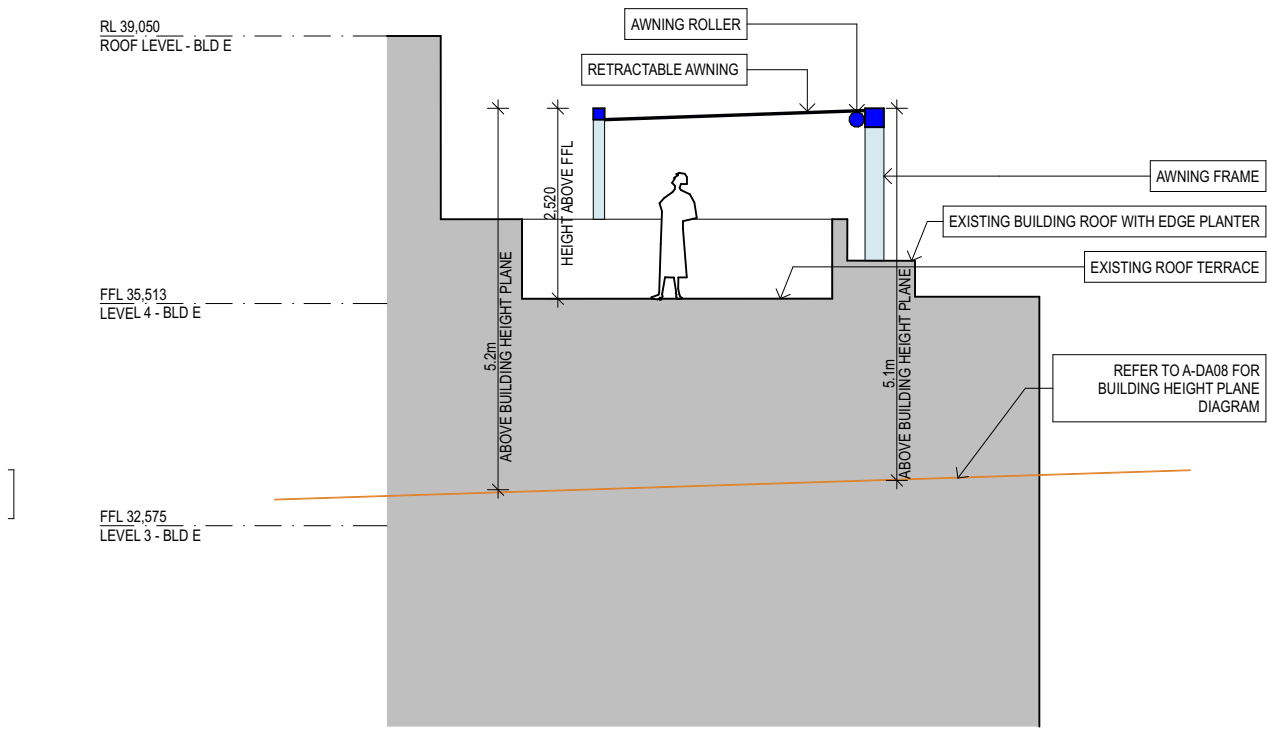
Watermark Freshwater - Building E Awnings
80 Evans Street, Freshwater NSW 2096

PROJECT NUMBER	PLOT DATE	DRAWN	CHECKED	SHEET SCALE	SHEET SIZE	NORTH
1354	22/2/22	CL	FR	1:100	A3	

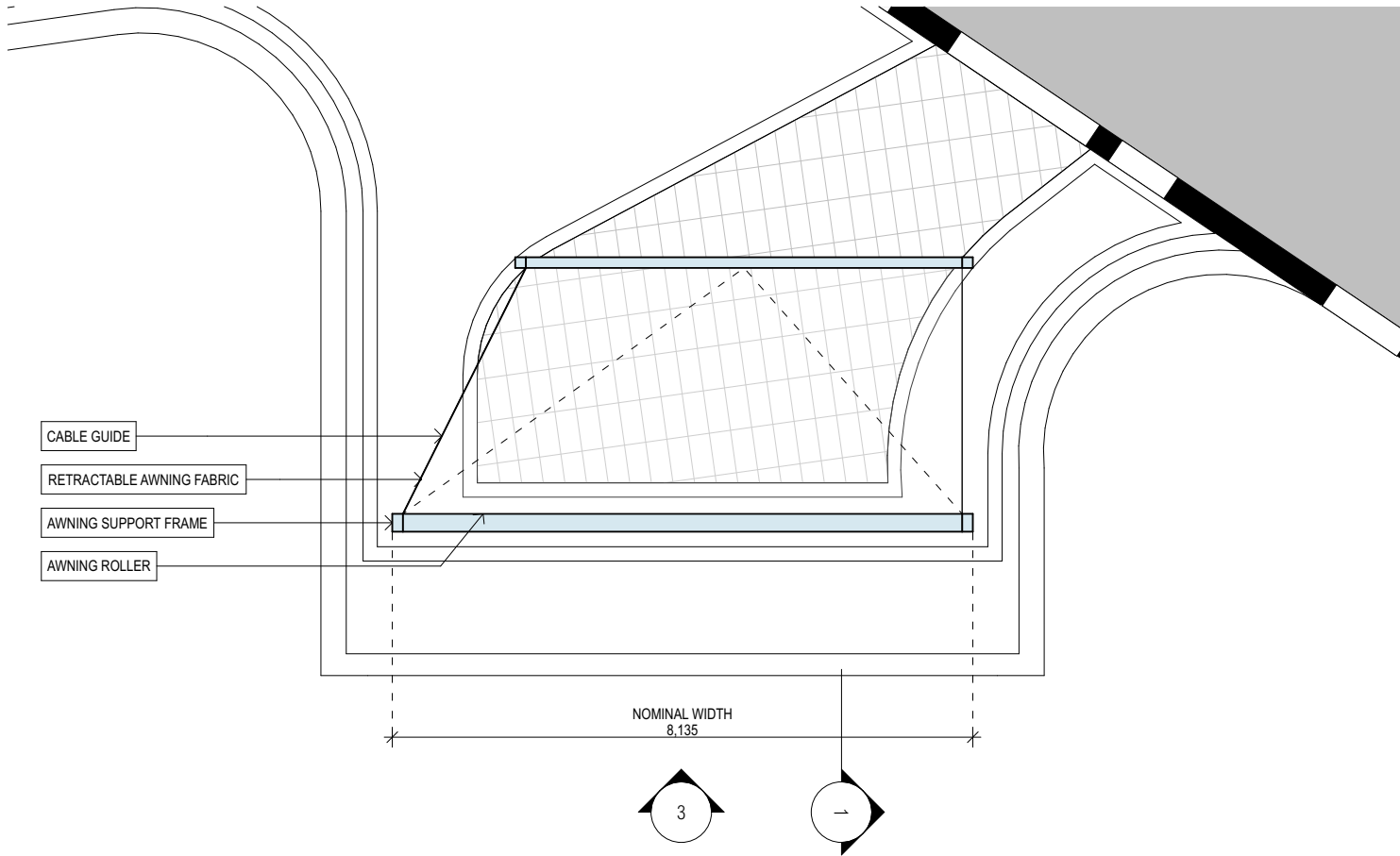
SHEET TITLE

BUILDING E - LEVEL 4 - SOUTH AWNING
DETAIL

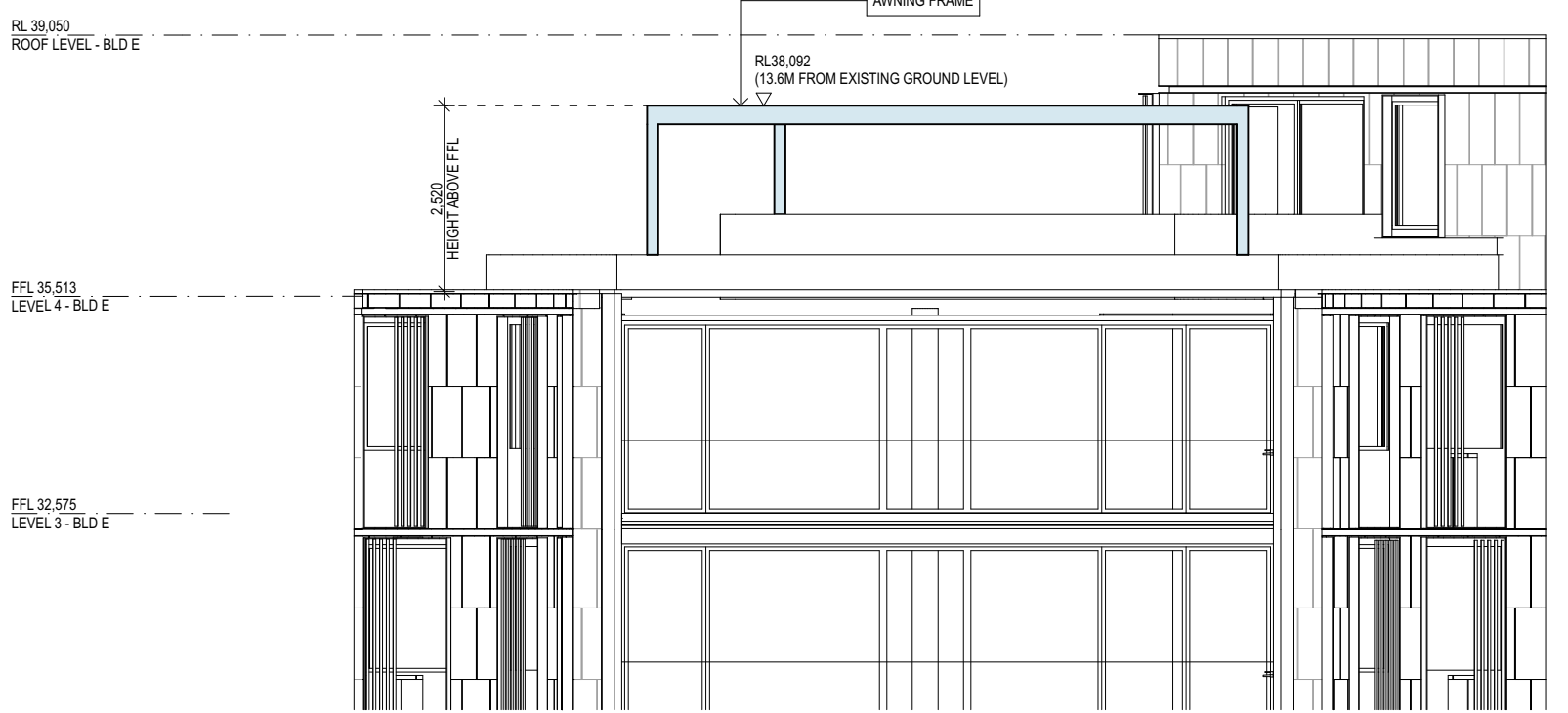
SHEET NUMBER	REVISION
A-DA03	E



1
-
AWNING BLD-E LEVEL 4 SECTION
1:100



2
-
AWNING BLD-E LEVEL 4 PLAN
1:100



3
-
AWNING BLD-E LEVEL 4 ELEVATION
1:100



AWNING FRAME: ANODIZED ALUMINIUM
(TO MATCH BLD E DARK FRAME DETAILS)



AWNING FABRIC: BEIGE

FOR DEVELOPMENT APPLICATION

ARCHITECT

CHROFI

3/1 THE CORSO MANLY NSW 2095 AUSTRALIA
T +61 2 8096 8500 E info@chrofi.com

CHOI ROPHA FIGHERA P/L ACN 144 714 885 ATF CHOI ROPHA FIGHERA UNIT TRUST T/A CHROFI ABN 22 365 257 187 NOMINATED ARCHITECT JOHN CHOI 8706 TAI ROPHA 6566 STEVEN FIGHERA 6609

THIS DRAWING SHOULD BE READ IN CONJUNCTION WITH ALL RELEVANT CONTRACTS, SPECIFICATION, REPORT AND DRAWINGS. DO NOT SCALE DRAWINGS. DIMENSIONS GOVERN. VERIFY ALL DIMENSIONS ON SITE BEFORE CONSTRUCTION. COPYRIGHT OF THIS DRAWING IS VESTED IN CHROFI.

REV	DATE	ISSUE
A	17/6/21	FOR DEVELOPMENT APPLICATION
B	20/7/21	FOR DEVELOPMENT APPLICATION
C	1/9/21	FOR DEVELOPMENT APPLICATION
D	24/9/21	FOR DEVELOPMENT APPLICATION
E	22/2/22	FOR DEVELOPMENT APPLICATION

REV DATE ISSUE

PROJECT

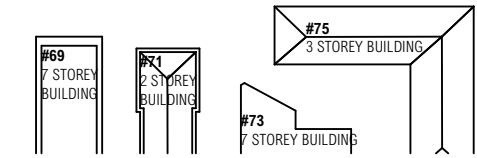
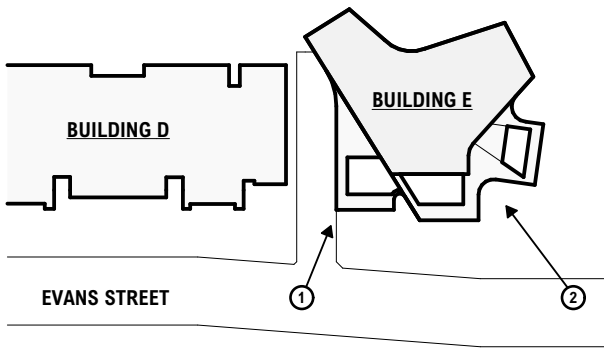
Watermark Freshwater - Building E Awnings
80 Evans Street, Freshwater NSW 2096

PROJECT NUMBER	PLOT DATE	DRAWN	CHECKED	SHEET SCALE	SHEET SIZE	NORTH
1354	22/2/22	CL	FR	1:100	A3	

SHEET TITLE

BUILDING E - LEVEL 4 - EAST AWNING
DETAIL

SHEET NUMBER	REVISION
A-DA04	E



1
-
INDICATIVE STREET VIEW 1
VIEW FROM EVANS STREET



2
-
INDICATIVE STREET VIEW 1
VIEW FROM EVANS STREET

FOR DEVELOPMENT APPLICATION

ARCHITECT

CHROFI

3/1 THE CORSO MANLY NSW 2095 AUSTRALIA
T +61 2 8096 8500 E info@chrofi.com
CHOI ROPHA FIGHERA P/L ACN 144 714 885 ATF CHOI ROPHA FIGHERA UNIT TRUST T/A CHROFI ABN 22 365 257 187 NOMINATED ARCHITECT JOHN CHOI 8706 TAI ROPHA 6568 STEVEN FIGHERA 6609
THIS DRAWING SHOULD BE READ IN CONJUNCTION WITH ALL RELEVANT CONTRACTS, SPECIFICATION, REPORT AND DRAWINGS. DO NOT SCALE DRAWINGS. DIMENSIONS GOVERN. VERIFY ALL DIMENSIONS ON SITE BEFORE CONSTRUCTION. COPYRIGHT OF THIS DRAWING IS VESTED IN CHROFI.

REV	DATE	ISSUE	REV	DATE	ISSUE
A	6/17/2021	FOR DEVELOPMENT APPLICATION			
B	7/20/2021	FOR DEVELOPMENT APPLICATION			
C	9/1/2021	FOR DEVELOPMENT APPLICATION			
D	9/24/2021	FOR DEVELOPMENT APPLICATION			

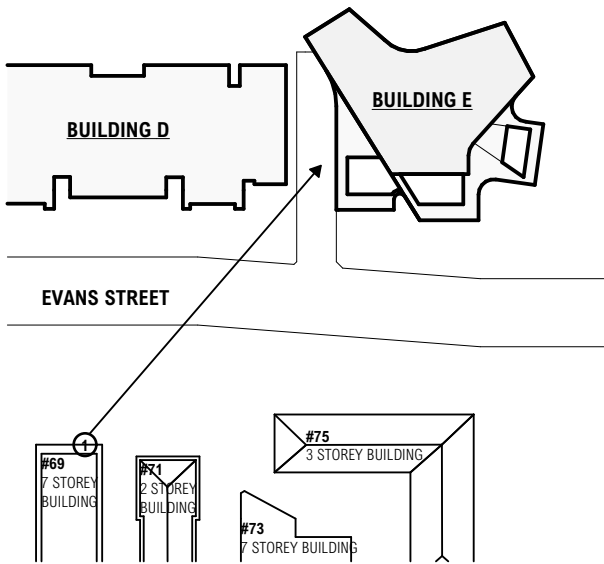
PROJECT
Watermark Freshwater - Building E Awnings

80 Evans Street, Freshwater NSW 2096

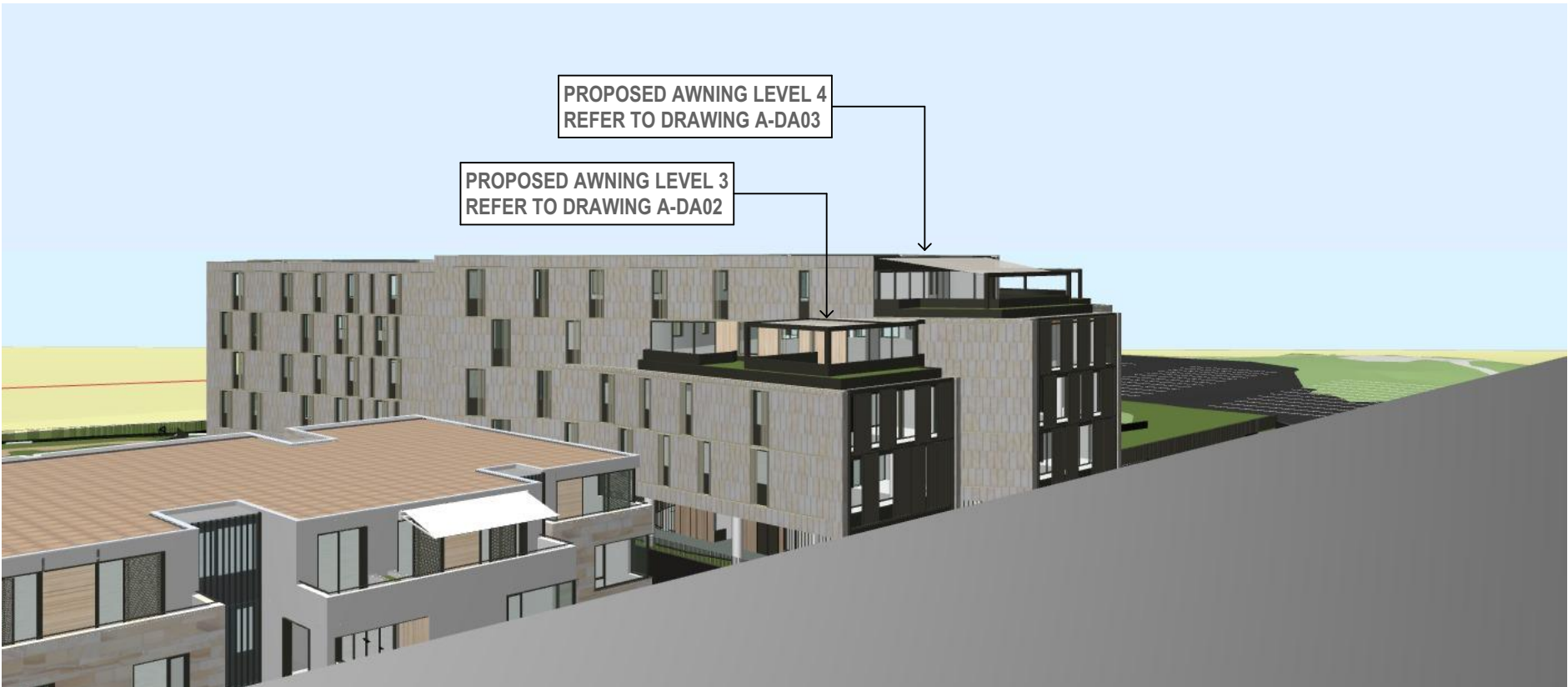
PROJECT NUMBER	PLOT DATE	DRAWN	CHECKED	SHEET SCALE	SHEET SIZE	NORTH
1354	9/24/2021	CL	FR	NTS	A3	

SHEET TITLE
BUILDING E - INDICATIVE STREET VIEW

SHEET NUMBER	REVISION
A-DA05	D



1
-
EXISTING VIEW 1
VIEW FROM 69 EVANS STREET
(LEVEL 7 - BALCONY - RL40,000)



2
-
PROPOSED VIEW 1
VIEW FROM 69 EVANS STREET
(LEVEL 7 - BALCONY - RL40,000)

FOR DEVELOPMENT APPLICATION

ARCHITECT

CHROFI

3/1 THE CORSO MANLY NSW 2095 AUSTRALIA
T +61 2 8096 8500 E info@chrofi.com
CHOI ROPHA FIGHERA P/L ACN 144 714 885 ATF CHOI ROPHA FIGHERA UNIT TRUST T/A CHROFI ABN 22 365 257 187 NOMINATED ARCHITECT JOHN CHOI 8706 TAI ROPHA 6568 STEVEN FIGHERA 6609
THIS DRAWING SHOULD BE READ IN CONJUNCTION WITH ALL RELEVANT CONTRACTS, SPECIFICATION, REPORT AND DRAWINGS. DO NOT SCALE DRAWINGS. DIMENSIONS GOVERN. VERIFY ALL DIMENSIONS ON SITE BEFORE CONSTRUCTION. COPYRIGHT OF THIS DRAWING IS VESTED IN CHROFI.

REV	DATE	ISSUE	REV	DATE	ISSUE
A	6/17/2021	FOR DEVELOPMENT APPLICATION			
B	7/20/2021	FOR DEVELOPMENT APPLICATION			
C	9/1/2021	FOR DEVELOPMENT APPLICATION			
D	9/24/2021	FOR DEVELOPMENT APPLICATION			

PROJECT

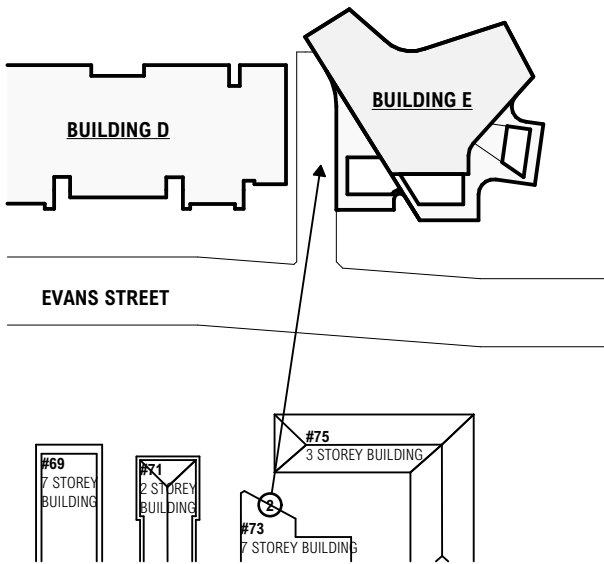
Watermark Freshwater - Building E Awnings
80 Evans Street, Freshwater NSW 2096

PROJECT NUMBER	PLOT DATE	DRAWN	CHECKED	SHEET SCALE	SHEET SIZE	NORTH
1354	9/24/2021	CL	FR	NTS	A3	

SHEET TITLE

BUILDING E - VIEW ANALYSIS

SHEET NUMBER	REVISION
A-DA06	D



1
-
EXISTING VIEW 2
VIEW FROM 73 EVANS STREET
(LEVEL 7 - BALCONY - RL40,000)



2
-
PROPOSED VIEW 2
VIEW FROM 73 EVANS STREET
(LEVEL 7 - BALCONY - RL40,000)

FOR DEVELOPMENT APPLICATION

ARCHITECT

CHROFI

3/1 THE CORSO MANLY NSW 2095 AUSTRALIA
T +61 2 8096 8500 E info@chrofi.com
CHOI ROPHA FIGHERA P/L ACN 144 714 885 ATF CHOI ROPHA FIGHERA UNIT TRUST T/A CHROFI ABN 22 365 257 187 NOMINATED ARCHITECT JOHN CHOI 8706 TAI ROPHA 6568 STEVEN FIGHERA 6609
THIS DRAWING SHOULD BE READ IN CONJUNCTION WITH ALL RELEVANT CONTRACTS, SPECIFICATION, REPORT AND DRAWINGS. DO NOT SCALE DRAWINGS. DIMENSIONS GOVERN. VERIFY ALL DIMENSIONS ON SITE BEFORE CONSTRUCTION. COPYRIGHT OF THIS DRAWING IS VESTED IN CHROFI.

REV	DATE	ISSUE	REV	DATE	ISSUE
A	6/17/2021	FOR DEVELOPMENT APPLICATION			
B	7/20/2021	FOR DEVELOPMENT APPLICATION			
C	9/1/2021	FOR DEVELOPMENT APPLICATION			
D	9/24/2021	FOR DEVELOPMENT APPLICATION			

PROJECT
Watermark Freshwater - Building E Awnings

80 Evans Street, Freshwater NSW 2096

PROJECT NUMBER	PLOT DATE	DRAWN	CHECKED	SHEET SCALE	SHEET SIZE	NORTH
1354	9/24/2021	CL	FR	NTS	A3	

SHEET TITLE
BUILDING E - VIEW ANALYSIS

SHEET NUMBER	REVISION
A-DA07	D



8.5M HEIGHT PLANE

1
-

BLD E - 8.5M HEIGHT PLANE



2
-

BLD E - 8.5M HEIGHT PLANE

FOR DEVELOPMENT APPLICATION

ARCHITECT

CHROFI

3/1 THE CORSO MANLY NSW 2095 AUSTRALIA
T +61 2 8096 8500 E info@chrofi.com

CHOI ROPHA FIGHERA P/L ACN 144 714 885 ATF CHOI ROPHA FIGHERA UNIT TRUST T/A CHROFI ABN 22 365 257 107 NOMINATED ARCHITECT JOHN CHOI 8706 TAI ROPHA 6566 STEVEN FIGHERA 6609

THIS DRAWING SHOULD BE READ IN CONJUNCTION WITH ALL RELEVANT CONTRACTS, SPECIFICATION, REPORT AND DRAWINGS. DO NOT SCALE DRAWINGS. DIMENSIONS GOVERN. VERIFY ALL DIMENSIONS ON SITE BEFORE CONSTRUCTION. COPYRIGHT OF THIS DRAWING IS VESTED IN CHROFI.

REV	DATE	ISSUE
D	9/24/2021	FOR DEVELOPMENT APPLICATION

REV	DATE	ISSUE
-----	------	-------

PROJECT
Watermark Freshwater - Building E Awnings
80 Evans Street, Freshwater NSW 2096

PROJECT NUMBER	PLOT DATE	DRAWN	CHECKED	SHEET SCALE	SHEET SIZE
1354	9/24/2021	CL	FR	NTS	A3

NORTH

SHEET TITLE
BUILDING E - 8.5M HEIGHT PLANE DIAGRAM
SHEET NUMBER
A-DA08

REVISION
D