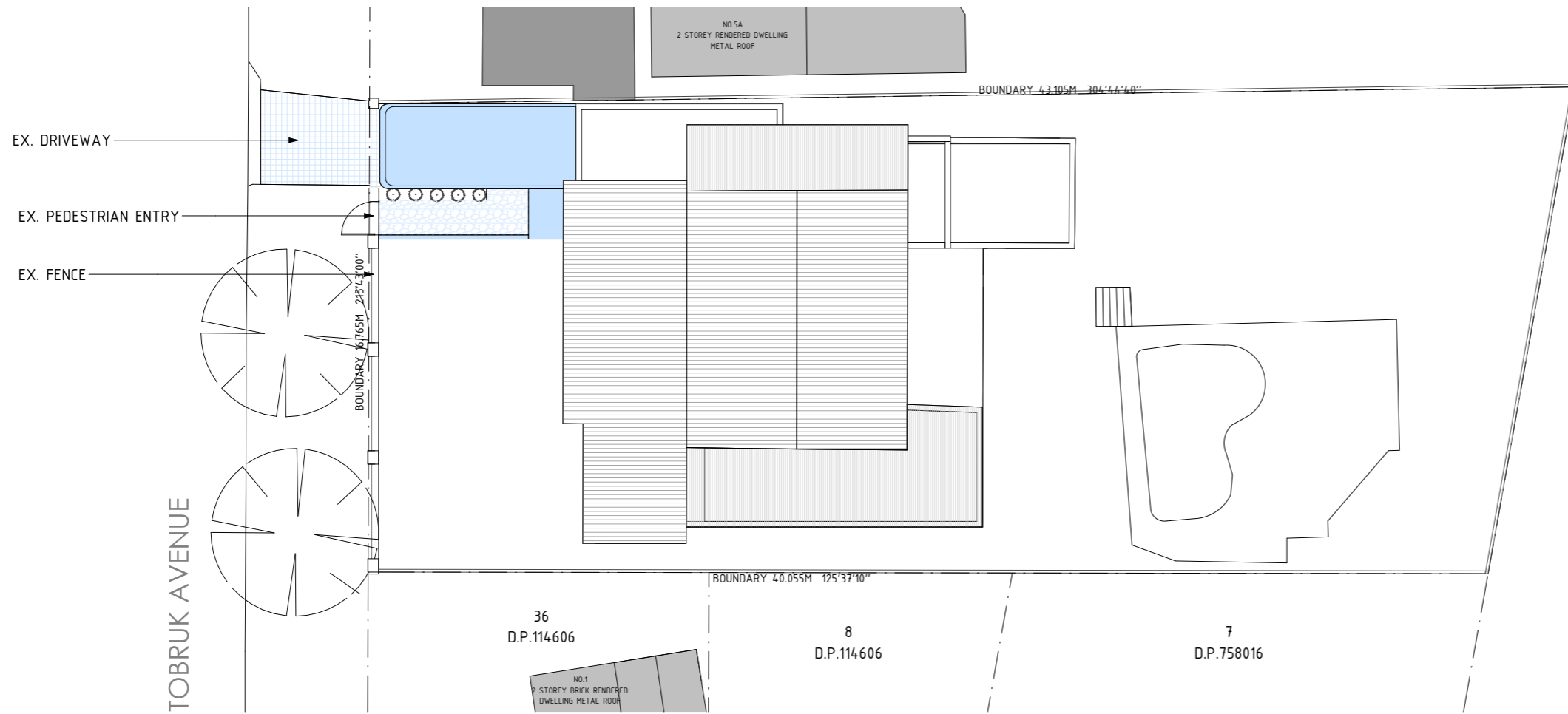
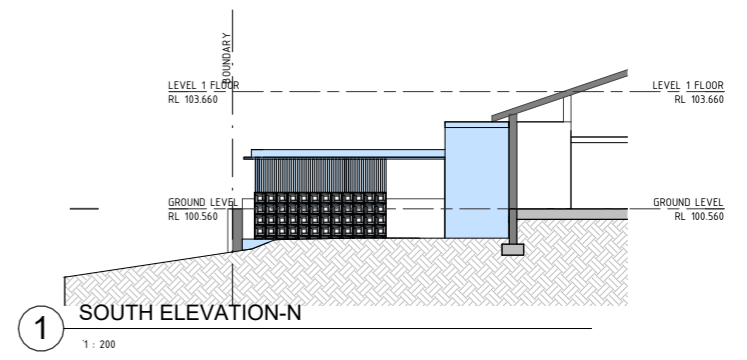


GENERAL NOTES:
 ALL WORKS TO COMPLY WITH BUILDING CODE OF AUSTRALIA, REQUIREMENTS OF RELEVANT STATUTORY AUTHORITIES/LOCAL GOVERNMENT & RELEVANT AUSTRALIAN BUILDING STANDARDS DRAWINGS FOR THE PURPOSES OF CDC ONLY.
 ARCHITECTURAL PLANS TO BE READ IN CONJUNCTION WITH CONSULTANT'S DRAWINGS, SPECIFICATIONS & REPORTS.
 COPYRIGHT OF DESIGN SHOWN HEREON IS RETAINED BY WAL DOBROW AND AUTHORITY IS REQUIRED FOR ANY REPRODUCTION.
 AREA SCHEDULES SUPPLIED ARE APPROXIMATE ONLY - FUTURE ALLOWANCE FOR VERTICAL SERVICE DUCTS, STRUCTURAL WALL SYSTEMS AND CONSULTANT INPUT WILL BE REQUIRED.

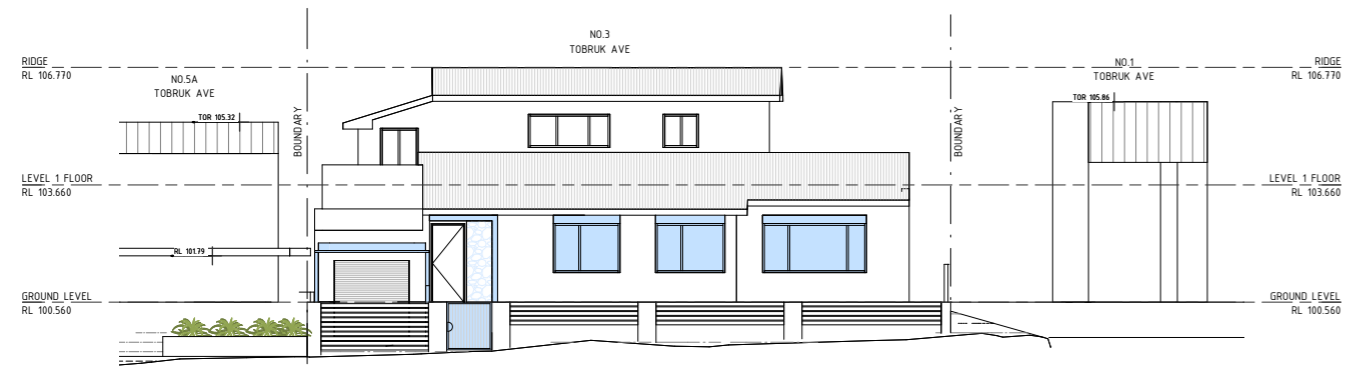
LEGEND:
 AW AWNING
 HW HIGHLIGHT WINDOW
 CU A/C CONDENSER UNITS
 FH FIRE HYDRANT
 FHR FIRE HOSE REEL
 FS FIRE STAIRS
 MV MECHANICAL RISER TO FUTURE DETAIL
 GC GARBAGE CHUTE
 MB MAILBOX TO FUTURE DETAIL
 PB PLANTERBOX
 R 240L RECYCLING BIN
 SK SKYLIGHT
 ST STORAGE
 WT HOT WATER UNITS



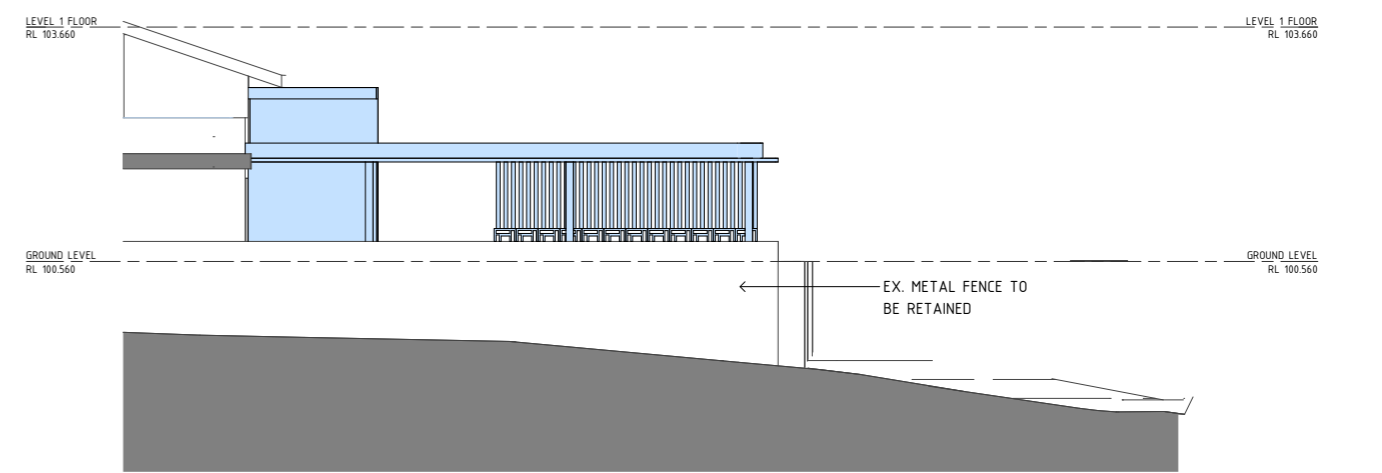
3 SITE PLAN-NOTIFICATION
 1: 200



1 SOUTH ELEVATION-N
 1: 200



2 WEST ELEVATION -NOTIFICATION
 1: 200

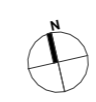


4 NORTH ELEVATION-NOTIFICATION
 1: 100

PROJECT:
PROPOSED ALTERATIONS & ADDITIONS

3 TOBRUK AVENUE, ALLAMBIE HEIGHTS

ISSUE	DATE	DESCRIPTION
P1	17/06/2024	FOR DA



SCALE:
 As indicated @ A3 SHEET

DA910
NOTIFICATION PLAN
 ISSUE: P1
 PROJECT NO: 2212



P - 0430 464 296 E - mikedandmorly@gmail.com.au
 W - www.mikedandmorlyarchitects.com
 4/1 Hampden St, Mosman NSW 2088
 Nominated Architect: Michael Murdock NSW 11538