



**LAND
REGISTRY
SERVICES**

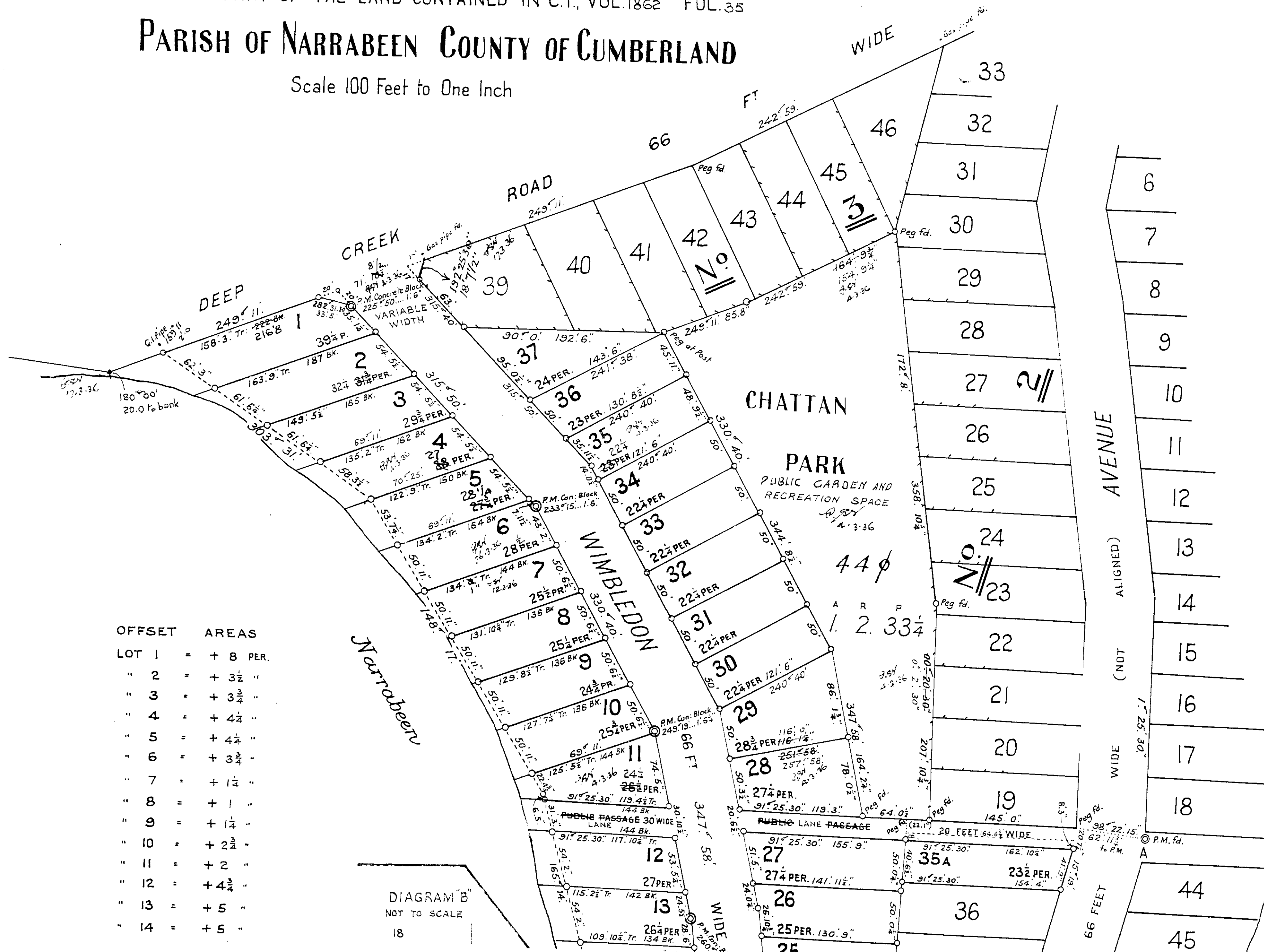
Direct Info
Quick and easy online

11/11/2019 11:54 AM

© Office of the Registrar-General 2019

OF WIMBLEDON ESTATE N^o 5
BEING PART OF THE LAND CONTAINED IN C.T., VOL.1862 FOL.35
PARISH OF NARRABEEN COUNTY OF CUMBERLAND

Scale 100 Feet to One Inch

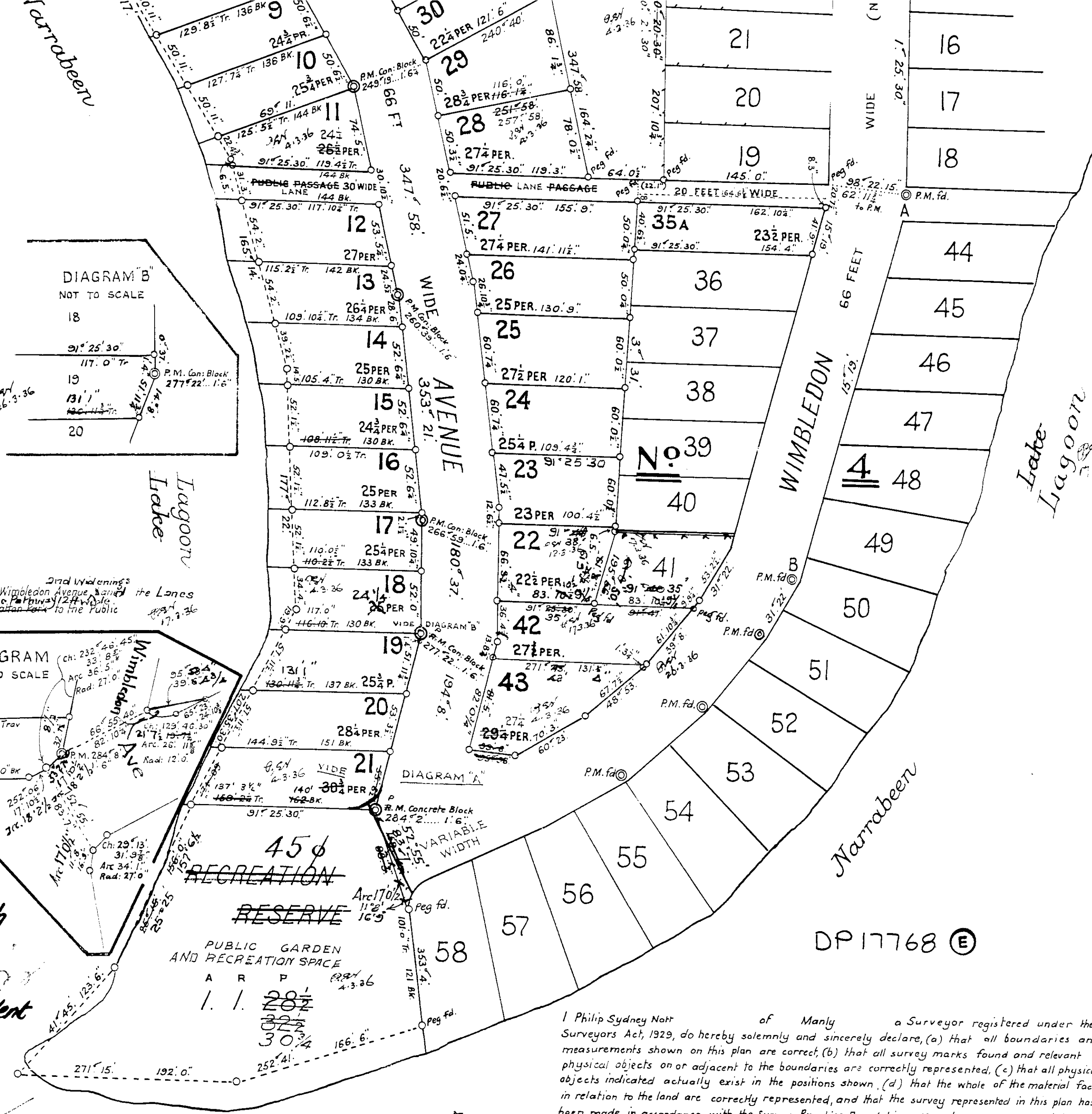


OFFSET		AREAS	
LOT	1	=	+ 8 PER.
"	2	=	+ 3 $\frac{1}{2}$ "
"	3	=	+ 3 $\frac{3}{4}$ "
"	4	=	+ 4 $\frac{1}{4}$ "
"	5	=	+ 4 $\frac{1}{2}$ "
"	6	=	+ 3 $\frac{3}{4}$ "
"	7	=	+ 1 $\frac{1}{4}$ "
"	8	=	+ 1 "
"	9	=	+ 1 $\frac{1}{4}$ "
"	10	=	+ 2 $\frac{3}{4}$ "
"	11	=	+ 2 "
"	12	=	+ 4 $\frac{3}{4}$ "
"	13	=	+ 5 "
"	14	=	+ 5 "

DIAGRAM "B"
NOT TO SCALE
18

R.G.O. R3.6.64.

LOT 1	=	+ 8 PER.
" 2	=	+ 3 1/2 "
" 3	=	+ 3 3/4 "
" 4	=	+ 4 1/4 "
" 5	=	+ 4 1/2 "
" 6	=	+ 3 3/4 "
" 7	=	+ 1 1/4 "
" 8	=	+ 1 "
" 9	=	+ 1 1/4 "
" 10	=	+ 2 1/4 "
" 11	=	+ 2 "
" 12	=	+ 4 1/4 "
" 13	=	+ 5 "
" 14	=	+ 5 "
" 15	=	+ 4 1/2 "
" 16	=	+ 3 3/4 "
" 17	=	+ 4 "
" 18	=	+ 3 1/4 "
" 19	=	+ 2 1/4 "
" 20	=	+ 2 "
" 21	=	+ 1 1/2 "
REC'D RES	=	+ 25 "



The Seal of the Council
is affixed hereto this twelfth
day of December, 1935

W. E. Shirley
Alfred Shirley
Approved and Covered by Council Clerks certificate
No 1236
Dated 12th Dec, 1936
Philip Sydney Nott
Council Clerk

Subscribed and declared before me at Manly
this 11th day of November 1935

E. M. Hott J.P.
Re-declared before me this 4th day of March 1936

Note: Bearing is from Reference Mark to peg
Datum line of Azimuth A.B.

I Philip Sydney Nott of Manly a Surveyor registered under the
Surveyors Act, 1929, do hereby solemnly and sincerely declare, (a) that all boundaries and
measurements shown on this plan are correct, (b) that all survey marks found and relevant
physical objects on or adjacent to the boundaries are correctly represented, (c) that all physical
objects indicated actually exist in the positions shown, (d) that the whole of the material facts
in relation to the land are correctly represented, and that the survey represented in this plan has
been made in accordance with the Survey Practice Regulations, 1933, by me, was completed on
9th November 1935 and the Reference Marks have been placed as shown hereon.
And I make this solemn declaration conscientiously believing the same to
be true, and by virtue of the provisions of the Oaths Act, 1900.

Philip Sydney Nott
Surveyor registered under the Surveyors Act, 1929.

CONVERSION TABLE ADDED IN
REGISTRAR GENERAL'S DEPARTMENT

DP 17768		
FEET INCHES	METRES	
- 3 1/2	0.09	
1 3 1/4	0.385	
1 4	0.405	
1 6	0.455	
1 6 1/4	0.465	
2 -	0.61	
2 1 1/2	0.65	
6 4 3/4	1.95	
6 5	1.955	
7 11 1/2	2.425	
8 3	2.515	
11 8	3.555	
12 -	3.66	
12 6 1/2	3.825	
14 5	4.395	
16 9	5.105	
17 -	5.18	
17 0 1/2	5.195	
17 2 1/2	5.245	
17 10 1/2	5.45	
18 7 1/2	5.675	
18 10 1/2	5.755	
19 9	6.02	
20 -	6.095	
20 6 1/2	6.26	
20 7 1/2	6.285	
21 7 1/2	6.59	
22 1	6.73	
22 4 3/4	6.825	
24 5 1/2	7.455	
24 10 3/8	7.58	
26 10 3/4	8.2	
26 11 5/8	8.22	
27 -	8.23	
28 6	8.685	
30 10 1/2	9.41	
31 3	9.525	
31 9 7/8	9.7	
32 8 1/2	9.97	
33 5	10.185	
33 8 5/8	10.275	
34 1	10.39	
34 4	10.465	
35 1 1/4	10.7	
35 11 1/2	10.96	
36 4	11.075	
36 5	11.1	
39 2 1/2	11.95	
39 4 3/4	12.01	
40 6 1/2	12.355	
41 9	12.725	
43 2	13.155	
45 11	13.995	
47 5 1/2	14.465	
48 9 1/2	14.87	
49 10 1/4	15.195	
50 -	15.24	
50 0 1/4	15.245	
50 3 1/2	15.33	
50 6 1/2	15.405	
50 11	15.52	
51 5	15.67	
51 11 3/4	15.845	
52 -	15.85	
52 1 1/2	15.89	
52 6	16	
52 6 1/4	16.01	
53 2 1/2	16.22	
53 5 1/2	16.245	
53 5 1/4	16.29	
53 7	16.33	
53 7 1/4	16.34	
54 2	16.51	
54 5 1/2	16.6	
57 11 1/2	17.665	
58 3 1/2	17.765	
59 -	17.985	

CONVERSION TABLE ADDED IN
REGISTRAR GENERAL'S DEPARTMENT

DP 17768 CONTINUED		
FEET INCHES	METRES	
60 -	18.29	
60 0 1/2	18.3	
60 3 5/8	18.38	
60 7 1/4	18.47	
61 6 1/4	18.75	
61 9	18.82	
61 10 3/4	18.865	
62 3	18.975	
62 11 3/4	19.195	
63 -	19.2	
63 9	19.43	
64 0 1/2	19.52	
66 -	20.115	
66 4	20.22	
66 6	20.27	
67 7 1/2	20.61	
70 3	21.41	
71 8 1/2	21.855	
74 5	22.68	
78 0 1/2	23.785	
80 7	24.56	
82 0 3/4	25.015	
82 10 1/4	25.255	
83 7	25.475	
83 9 3/4	25.545	
83 10 1/2	25.565	
85 8	26.11	
86 1 3/4	26.255	
91 -	27.735	
95 0 1/2	28.97	
95 4	29.06	
100 4 1/2	30.595	
101 -	30.785	
104 4	31.8	
105 4	32.105	
109 0 1/2	33.235	
109 4 3/4	33.345	
109 10 1/4	33.485	
110 0 1/2	33.54	
112 8 1/2	34.355	
115 2 1/2	35.115	
116 -	35.355	
117 -	35.66	
117 10 1/4	35.92	
119 3	36.345	
119 4 1/2	36.385	
120 1	36.6	
121 -	36.88	
121 6	37.035	
122 9	37.415	
123 6	37.645	
125 5 1/2	38.24	
127 7 1/4	38.895	
129 8 1/2	39.535	
130 -	39.625	
130 8 1/2	39.84	
130 9	39.855	
131 1	39.955	
131 4	40.03	
131 10 1/4	40.19	
133 -	40.54	
134 -	40.845	
134 1	40.87	
134 2	40.895	
135 2	41.2	
136 -	41.455	
137 -	41.76	
137 3 1/2	41.845	
140 -	42.67	
141 11 1/2	43.27	
142 -	43.28	
143 6	43.74	
144 -	43.89	
144 9 1/2	44.13	
145 -	44.195	
149 5 1/2	45.555	
150 -	45.72	

CONVERSION TABLE ADDED IN
REGISTRAR GENERAL'S DEPARTMENT

DP 17768 CONTINUED			
FEET INCHES	METRES		
151 -	46.025		
154 -	46.94		
154 4	47.04		
154 9 1/4	47.175		
155 9	47.475		
157 6 1/2	48.02		
158 3	48.235		
162 -	49.38		
162 10 1/4	49.64		
163 9	49.91		
164 2 1/4	50.04		
165 -	50.29		
166 6	50.75		
187 -	57		
192 -	58.52		
192 6	58.67		
207 10 3/4	63.37		
216 8	66.04		
344 8 1/2	105.07		
358 10 3/4	109.39		
AC RU P	SQ M		
- - 1 1/4	31.6		
- - 1 1/2	37.9		
- - 2	50.6		
- - 2.7	68.3		
- - 2 3/4	69.6		
- - 3 1/2	88.5		
- - 3 3/4	94.8		
- - 4	101.2		
- - 4 1/4	107.5		
- - 4 3/4	120.1		
- - 5	126.5		
- - 8	202.3		
- - 22 1/4	562.8		
- - 22 1/2	569.1		
- - 23	581.7		
- - 23 1/2	594.4		
- - 24	607		
- - 24 1/4	613.4		
- - 24 3/4	626		
- - 25	632.3		
- - 25 1/4	638.6		
- - 25 1/2	645		
- - 25 3/4	651.3		
- - 26 1/4	663.9		
- - 27	682.9		
- - 27 1/4	689.2		
- - 27 1/2	695.6		
- - 28 1/4	714.5		
- - 28 1/2	720.8		
- - 28 3/4	727.2		
- - 29 3/4	752.5		
- - 30	758.8		
- - 30 1/2	771.4		
- - 30 3/4	777.8		
- - 32 1/4	815.7		
- - 39 1/4	992.7		
1 1 30 3/4	5836		
1 2 33 1/4	6911		