

Landscape Package

Contents	Drawing No.	Issue	Date
Coversheet, Imagery & Plant Schedule	CRA01-DA-100	A	05/03/2019
Landscape Plan of subdivision - Overall	CRA01-DA-101	A	05/03/2019
Landscape Plan of subdivision - 1 of 2	CRA01-DA-102	A	05/03/2019
Landscape Plan of subdivision - 2 of 2	CRA01-DA-103	A	05/03/2019

SITE LOCATION MAPS



Native Trees, Shrubs & Grasses



Tristaniopsis laurina- Water Gum



Livistona australis- Cabbage Tree Palm



Elaeocarpus reticulatus- Blueberry Ash



Baeckea linifolia- Flax Leaf Heath Myrtle



Helichrysum petiolare- Licorice Plant



Plectranthus argentatus- Silver Spur Flower



Doryanthes excelsa- Gymea Lilly



Pteris umbrosa- Jungle Fern



Macrozamia communis- Burrawang Palm



Asplenium nidus- Birds Nest Fern



Evolvulus pilosus- Blue Eyes



Pelargonium australe- Coastal Geranium

Creekline Corridor Planting



Casuarina glauca - Casuarina



Dodonaea triquetra - Large-leaf Hop-Bush



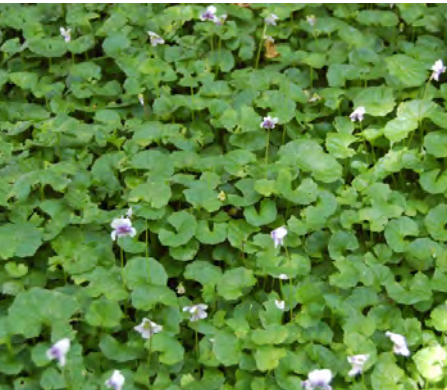
Homalanthus populifolius



Commelina cyanea - Native Wandering Jew



Hypolepis muelleri - Ground Fern



Viola hederacea - Native Violet

Abbrev	Botanical Name	Common Name	Mature Height (m)	Pot Size	Qty
Trees					
BAN int	Banksia integrifolia	Coast Banksia	8-10	45L	45
COR mac	Corymbia maculata	Spotted Gum	8	45L	3
EUC his	Eucalyptus hispida	Dwarf Apple	8	45L	12
HAR pen	Harpullia pendula	Tulipwood Tree	15	45L	10
SYZ smi	Syzygium smithii	Lilly pilly	8-10	45L	5
TRI lau	Tristaniopsis laurina	Water Gum	8	100L	5
Shrubs					
ALY hue	Alyogyne huegelia 'Monterey Bay'	Blue Hibiscus	2.5	5L	
BAE lin	Baeckea linifolia	Flax Leaf Heath Myrtle	2	5L	
COR alb	Correa alba	White Correa	1.5-2	5L	
ERI myo	Eriostemon myoporoides	Long Leaf Waxflower	1.5-2	140mm	
HEL pet	Helichrysum petiolare	Licorice Plant	0.5	5L	
MEL sty	Melaleuca styphelioides	Pickly Leafed Paperbark	7-12	25L	
PIT tob	Pittosporum tobira 'Miss muffet'	Miss Muffet Tobira	1-2	5L	
PLE arg	Plectranthus argentatus	Silver Spur Flower	1	5L	
SYZ cas	Syzygium 'Cascade'	Cascade Lilly Pilly	2-3	5L	
SYZ boo	Syzygium 'Boomer'	Lilly Pilly	1.5	5L	
WES fru	Westringia 'smokie'	Coast Rosemary	1.5	5L	
Accent					
DOR exc	Doryanthes excelsa	Gymea Lilly	2-4	25L	
MAC com	Macrozamia communis	Burrawang	2-3	25L	
PTE umb	Pteris umbrosa	Jungle Fern	1	5L	
Grasses					
CAR app	Carex appressa	Tall Sedge	0.9	V/cell	
DIA cae	Dianella caerulea 'Breeze'	Blue Flax Lily	0.6-0.7	V/cell	
DIA tas	Dianella tasmanica 'Destiny'	Verigated Flax Lily	0.35	V/cell	
FAC nod	Facinia nodosa	Knobby Club Rush	0.8	V/cell	
JUN usi	Juncus usitatus	Common Rush	0.8	V/cell	
LOM hys	Lomandra hystrix	Fine Mat Rush	0.6	V/cell	
LOM lon	Lomandra longifolia	Mat Rush		V/cell	
LOM tan	Lomandra tanika	Fine Mat Rush	0.5	V/cell	
Groundcovers					
ASP nid	Asplenium nidus	Bird's Nest Fern	-	140mm	
CER tom	Cerastium tomentosum	Snow In Summer	0.2	140mm	
CHR max	Chrysanthemum maximum	Shasta Daisy	0.9	140mm	
EVO pil	Evolvulus pilosus	Blue Eyes	0.5	140mm	
GRE poo	Grevillea 'Poolinda Royal Mantle'	Creeping Grevillea	-	140mm	
HIB sca	Hibbertia scandens	Golden guinea vine	0.3	140mm	
MYO par	Myoporum parvifolium	Creeping Boobialla	-	V/cell	
PEL aus	Pelargonium australe	Coastal Geranium	-	140mm	
VIO hed	Viola hederacea	Native Violet	-	140mm	

Creekline corridor planing (Swamp Mahogany Forest species)

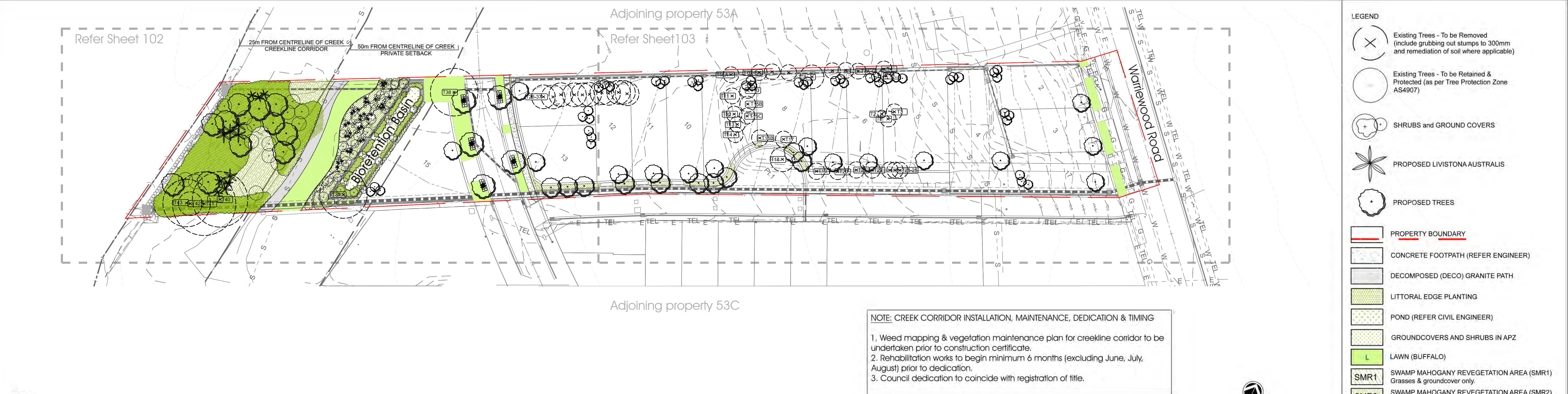
Abbrev	Botanical Name	Common Name	Mature Height (m)	Pot Size	Qty
Trees (min. 4 PER 30m2)					
EUC robusta	Eucalyptus robusta	Swamp Mahogany	25	tube stock	4
CAS gla	Casuarina glauca	Casuarina	10	tube stock	5
LIV aus	Livistona australis	Cabbage Tree Palm	20	tube stock	12
MEL lin	Melaleuca linarifolia	Narrow Leafed Paperbark	8	tube stock	14
Shrubs (2 PER 5m2 clumps of 3-5)					
ACA lon sub	Acacia longifolia subsp. longifolia	Golden Wattle	8	tube stock	2 / 5m2
DOD tri	Dodonaea triquetra	Large-leaf Hop-Bush	3	tube stock	" "
HOM pop	Homalanthus populifolius	Bleeding Heart Tree	6	tube stock	" "
Ferns, Grasses (3 PER m2) & Groundcovers (5 PER m2)					
COM cya	Commelina cyanea	Native Wandering Jew	0.3	V/cell	5 / m2
GAH cla	Gahnia clarkei	Saw Sedge	2	V/cell	3 / m2
HYD ped	Hydrocotyle peduncularis	Pennywort	0.1	V/cell	5 / m2
HYP mue	Hypolepis muelleri	Ground Fern	1	V/cell	3 / m2
PHR aus	Phragmites australis	Common Reed	6	V/cell	3 / m2
PTE esc	Pteridium esculentum	Bracken Fern	1.5	V/cell	3 / m2
VIO hed	Viola hederacea	Native Violet	-	V/cell	5 / m2

Streetscape Treatment

1 Indicative Character Imagery

2 Indicative Almost Native Plant Imagery

3 Indicative Plant Schedule



1 Site Plan



2 Site Coverage Plan

sym. studio has been commissioned to prepare a concept landscape plan for a residential subdivision at 53B Warriewood Road, Warriewood. This property is a part of the Warriewood Valley, situated west of Mona Vale Beach on the Northern Beaches of Sydney.

Warriewood Valley is transforming into a dynamic urban environment with new residential communities, parks, playgrounds, walkways, cycleways and creekline restoration. The existing landscape character is dominated by degraded pastureland grasses, bordered to the south by Narabeen Creek riparian corridor and an evolving residential streetscape to the north (Warriewood Road).

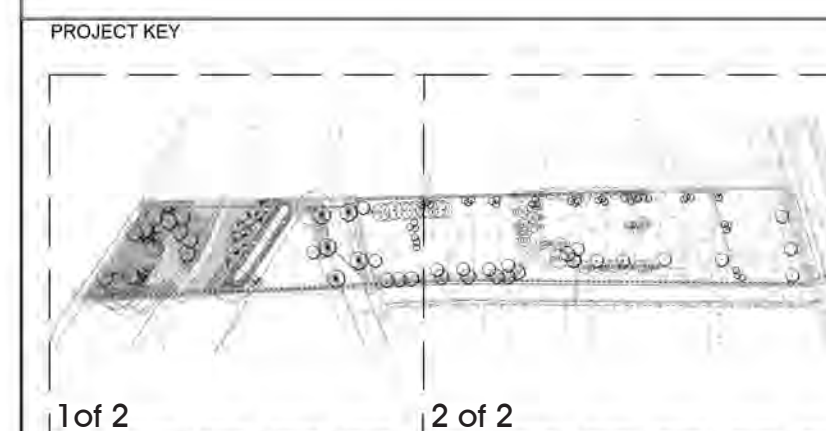
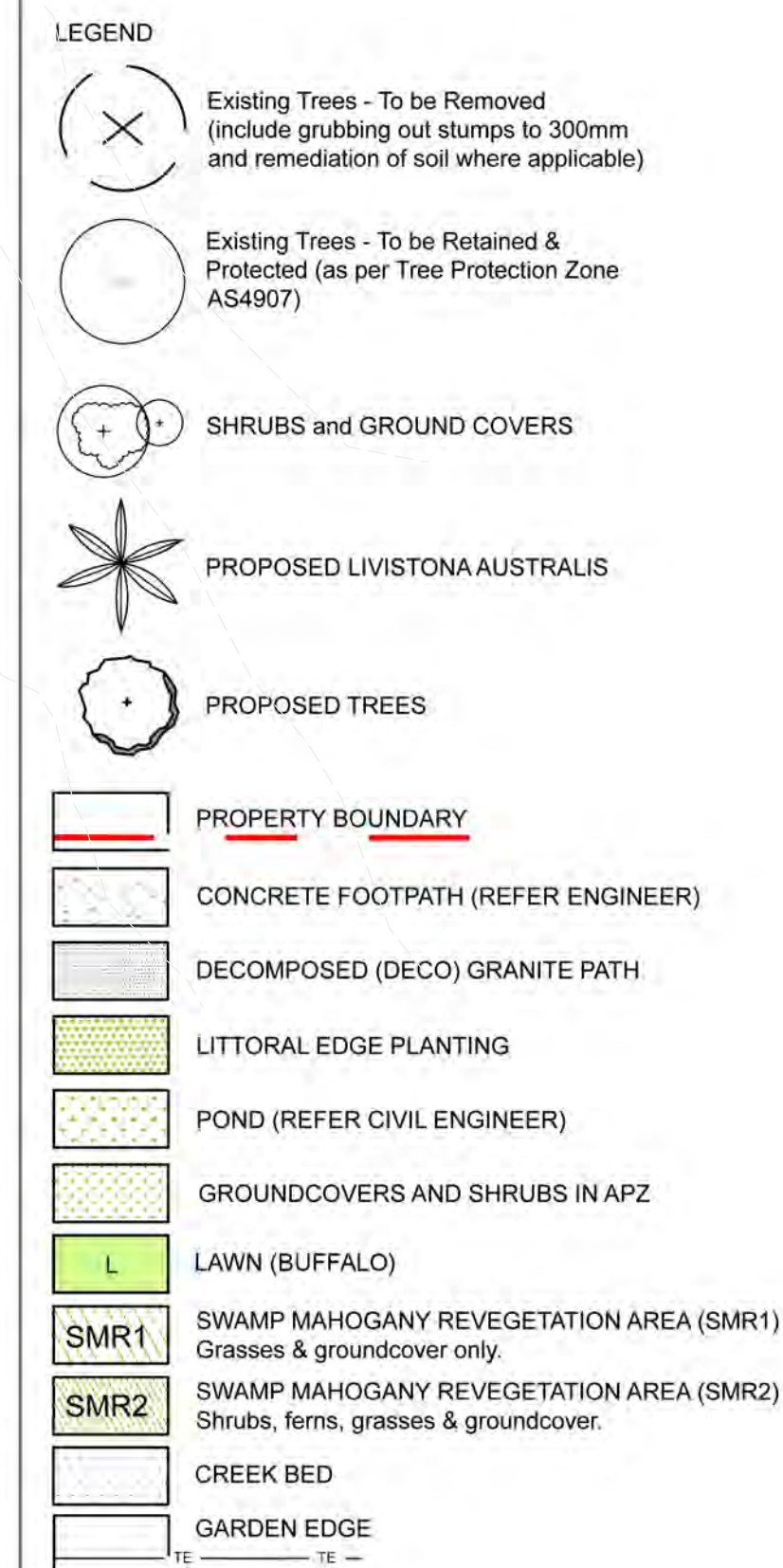
Significant canopy trees include Angophora, Corymbia, Eucalyptus, Livistonia & Casuarinas with a midstory of Pittosporum, Acmena & Banksia. Understory and ground covers include Lomandra & Dianella sp. The gently sloping topography provides opportunity to emphasise the influence of Narabeen Creek and its historical function of enriching alluvial soils and the supply of fresh water for irrigation of productive agricultural lands. The landscape design a/ prioritises the rehabilitation of the inner 25.0M creek corridor and responds to the Warriewood Valley Masterplan outer 25.0M creek corridor which includes a 2.5M public access path/cycleway as well the integration of a bio-retention basin into the passive recreation usage of these areas along the riparian corridor.

The streetscape includes Lorikeet Drive and Warriewood Road. In keeping with the Warriewood Valley Masterplan street trees have been determined by neighbouring developments and therefore a continuation of these species and large pot sizes serve to provide instant impact at time of installation. Interallotment trees include 1 x medium sized tree (Waterhousea floribunda) located in the front yard and 3x small trees in the back (banksia integrifolia) clumped together. Fauna friendly boundary fencing will facilitate small mammal movement through the community.

The landscape strategy looks to retain existing vegetation, restore local habitat and revegetate with endemic species. Landscape planting has been kept to predominantly native, with many endemic species which are adaptable and dependable in meeting the demands of a residential community.

The landscape design reinforces the local character achieved by retaining and enhancing a proportion of native vegetation and implementing a design approach that is sympathetic to the existing site character for the benefit of existing wildlife and new residents.

3 Statement of Environmental Effects



05/03/19	P1	COUNCIL APPROVAL - DA	AD
DATE	ISSUE	AMENDMENT	BY

PROJECT

53B WARRIEWOOD ROAD
WARRIEWOOD, NSW

CLIENT

ZYGT PTY LTD

LANDSCAPE ARCHITECT

sym. studio

Phone: 01 2 5411 2794
Studio 1, P.O. Box 53
Mona Vale, NSW 1505 Australia
www.symstudio.com

DRAWING TITLE

LANDSCAPE PLAN (Sub Division)

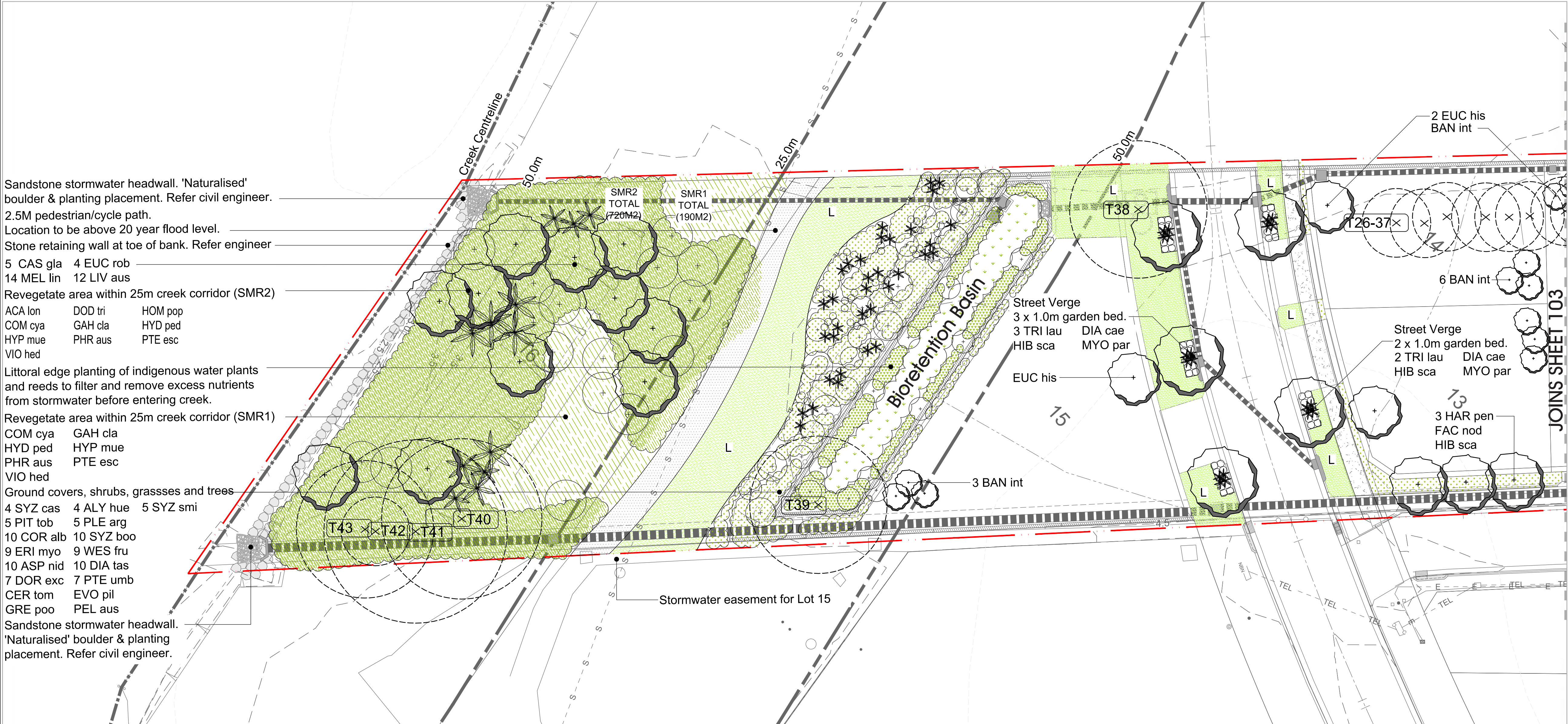
APPROVED FOR RELEASE

AILA #1420

DATE	DRAWN	CHECKED
13/03/19	AD	CG

PROJECT No.	DRAWING No.	ISSUE
CRA01	CRA01 DA-101	B

COPYRIGHT OF DESIGN SHOWN HERE IS RETAINED AND AUTHORITY FOR ANY REPRODUCTION, IF IN DOUBT ASK. FOLLOW WRITTEN DIMENSIONS ONLY. DO NOT SCALE OFF DRAWINGS. DO NOT KEEP SUPERSEDED DRAWINGS ON SITE.



Sandstone stormwater headwall. 'Naturalised' boulder & planting placement. Refer civil engineer.
2.5M pedestrian/cycle path.
Location to be above 20 year flood level.
Stone retaining wall at toe of bank. Refer engineer
5 CAS gla 4 EUC rob
14 MEL lin 12 LIV aus
Revegetate area within 25m creek corridor (SMR2)
ACA lon DOD tri HOM pop
COM cya GAH cla HYD ped
HYP mue PHR aus PTE esc
VIO hed
Littoral edge planting of indigenous water plants and reeds to filter and remove excess nutrients from stormwater before entering creek.
Revegetate area within 25m creek corridor (SMR1)
COM cya GAH cla
HYD ped HYP mue
PHR aus PTE esc
VIO hed
Ground covers, shrubs, grassses and trees
4 SYZ cas 4 ALY hue 5 SYZ smi
5 PIT tob 5 PLE arg
10 COR alb 10 SYZ boo
9 ERI myo 9 WES fru
10 ASP nid 10 DIA tas
7 DOR exc 7 PTE umb
CER tom EVO pil
GRE poo PEL aus
Sandstone stormwater headwall.
'Naturalised' boulder & planting placement. Refer civil engineer.

LEGEND

- Existing Trees - To be Removed (include grubbing out stumps to 300mm and remediation of soil where applicable)
- Existing Trees - To be Retained & Protected (as per Tree Protection Zone AS4907)
- SHRUBS and GROUND COVERS
- PROPOSED LIVISTONA AUSTRALIS
- PROPOSED TREES

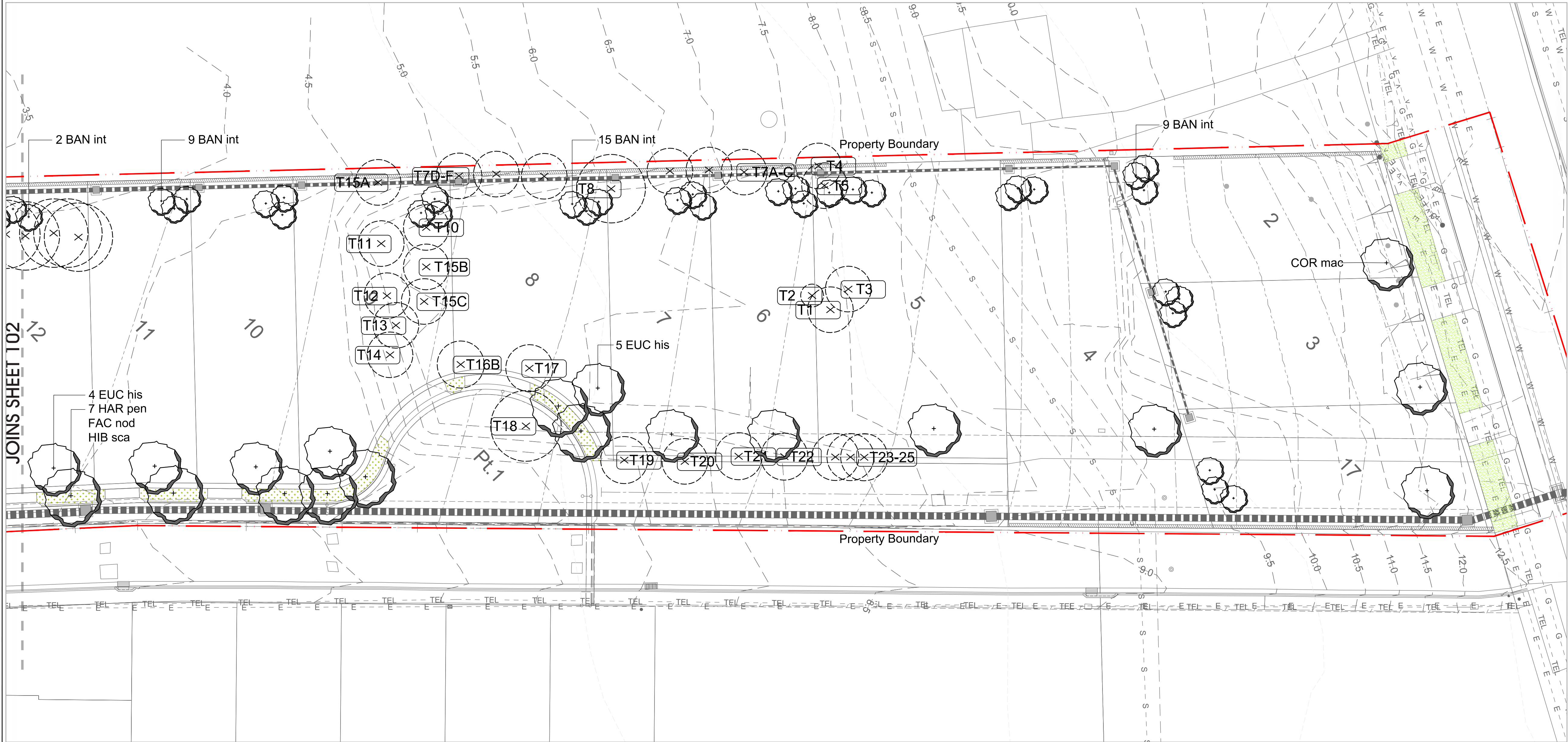
- PROPERTY BOUNDARY
- CONCRETE FOOTPATH (REFER ENGINEER)
- DECOMPOSED (DECO) GRANITE PATH
- LITTORAL EDGE PLANTING
- POND (REFER CIVIL ENGINEER)
- GROUNDCOVERS AND SHRUBS IN APZ
- LAWN (BUFFALO)
- SMR1 SWAMP MAHOGANY REVEGETATION AREA (SMR1) Grasses & groundcover only.
- SMR2 SWAMP MAHOGANY REVEGETATION AREA (SMR2) Shrubs, ferns, grasses & groundcover.
- CREEK BED
- GARDEN EDGE

PROJECT KEY

05/03/19	P1	COUNCIL APPROVAL - DA	AD
DATE	ISSUE	AMENDMENT	BY
PROJECT 53B WARRIEWOOD ROAD WARRIEWOOD, NSW			
CLIENT ZYGT PTY LTD			
LANDSCAPE ARCHITECT gym. studio Phone: 61 2 6411 2734 Studio 1, PO Box 53 Mona Vale, NSW Australia www.gymstudio.com			
DRAWING TITLE LANDSCAPE PLAN (Sub Division)			
APPROVED FOR RELEASE AILA #1420			
DATE	DRAWN	CHECKED	
13/03/19	AD	CG	
PROJECT No.	DRAWING No.	ISSUE	
CRA01	CRA01 DA-102	B	

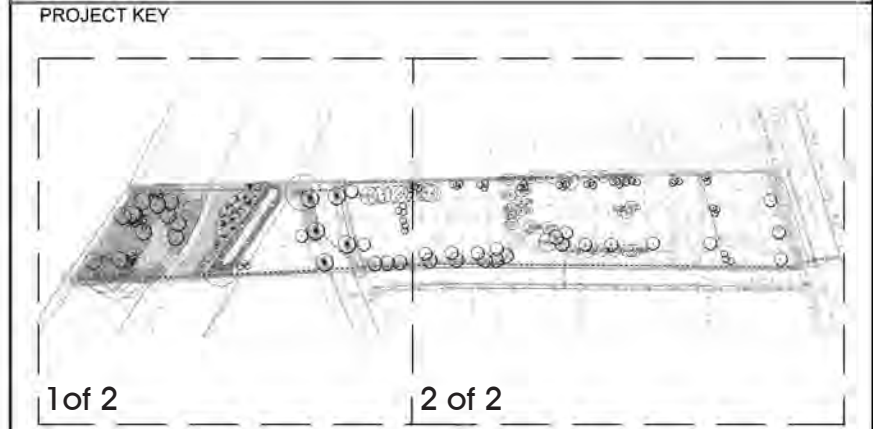
COPYRIGHT OF DESIGN SHOWN HERE IS RETAINED AND AUTHORITY FOR ANY REPRODUCTION. IF IN DOUBT ASK. FOLLOW WRITTEN DIMENSIONS ONLY. DO NOT SCALE OFF DRAWINGS. DO NOT KEEP SUPERSEDED DRAWINGS ON SITE.

General Note:
Services shown as diagrammatic. Adjust final location onsite during installation.



LEGEND

- Existing Trees - To be Removed (include grubbing out stumps to 300mm and remediation of soil where applicable)
- Existing Trees - To be Retained & Protected (as per Tree Protection Zone AS4907)
- SHRUBS and GROUND COVERS
- PROPOSED LIVISTONA AUSTRALIS
- PROPOSED TREES
- PROPERTY BOUNDARY
- CONCRETE FOOTPATH (REFER ENGINEER)
- DECOMPOSED (DECO) GRANITE PATH
- LITTORAL EDGE PLANTING
- POND (REFER CIVIL ENGINEER)
- GROUNDCOVERS AND SHRUBS IN APZ
- LAWN (BUFFALO)
- SMR1 SWAMP MAHOGANY REVEGETATION AREA (SMR1) Grasses & groundcover only.
- SMR2 SWAMP MAHOGANY REVEGETATION AREA (SMR2) Shrubs, ferns, grasses & groundcover.
- CREEK BED
- GARDEN EDGE



05/03/19	PT	COUNCIL APPROVAL - DA	AD
DATE	ISSUE	AMENDMENT	BY

PROJECT 53B WARRIEWOOD ROAD
WARRIEWOOD, NSW

CLIENT ZYGT PTY LTD

LANDSCAPE ARCHITECT
sym studio
Phone: 61 2 8411 2754
Studio: 1, P.O. Box 53
Mona Vale, NSW Australia
www.symstudio.com

DRAWING TITLE LANDSCAPE PLAN (Sub Division)

APPROVED FOR RELEASE
AILA #1420

DATE	DRAWN	CHECKED
13/03/19	AD	CG

PROJECT No.	DRAWING No.	ISSUE
CRA01	CRA01 DA-103	B

COPYRIGHT OF DESIGN SHOWN HERE IS RETAINED AND AUTHORITY FOR ANY REPRODUCTION, IF IN DOUBT ASK, FOLLOW WRITTEN DIMENSIONS ONLY. DO NOT SCALE OFF DRAWINGS. DO NOT KEEP SUPERSEDED DRAWINGS ON SITE.

General Note:
Services shown as diagrammatic. Adjust final location onsite during installation.