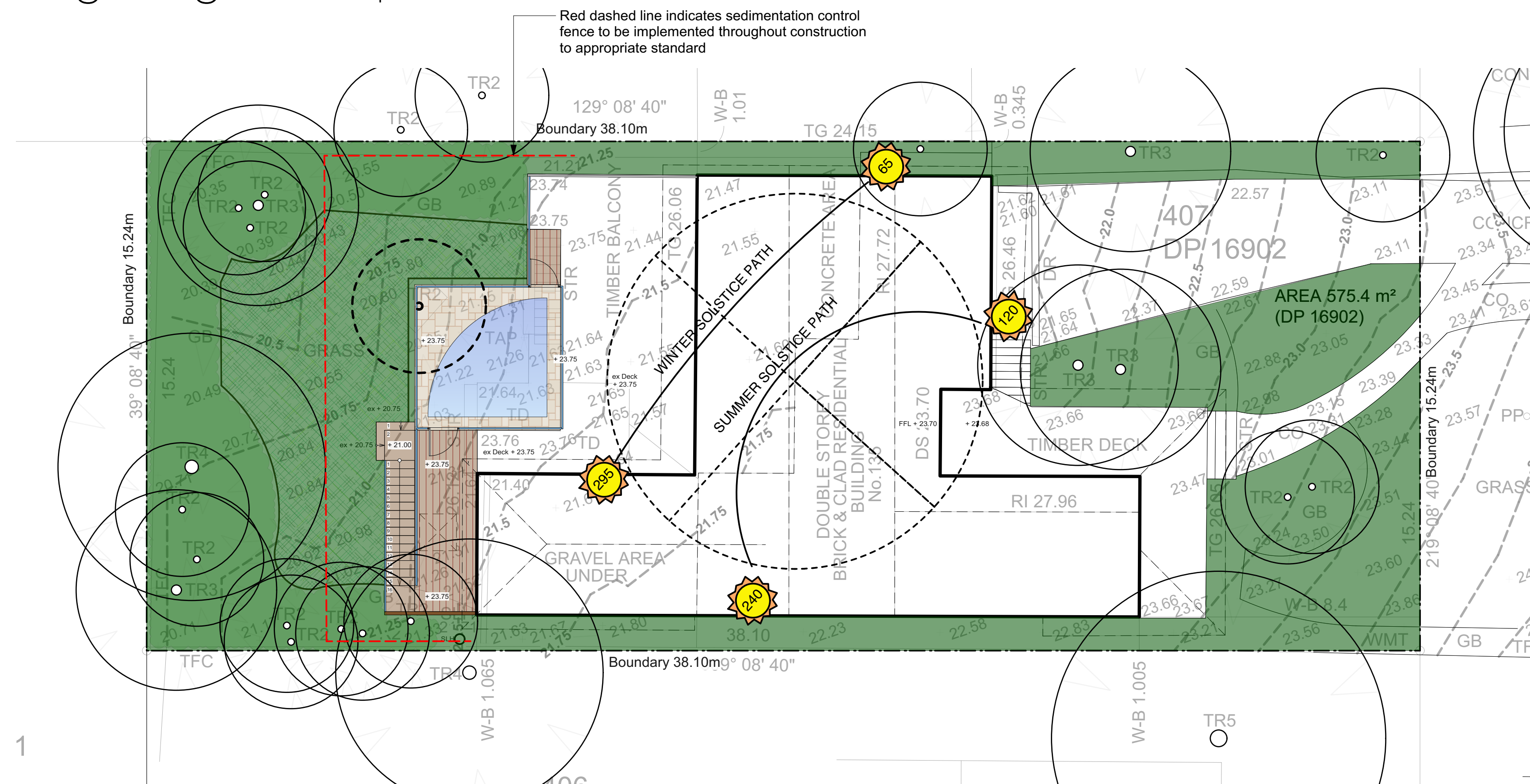
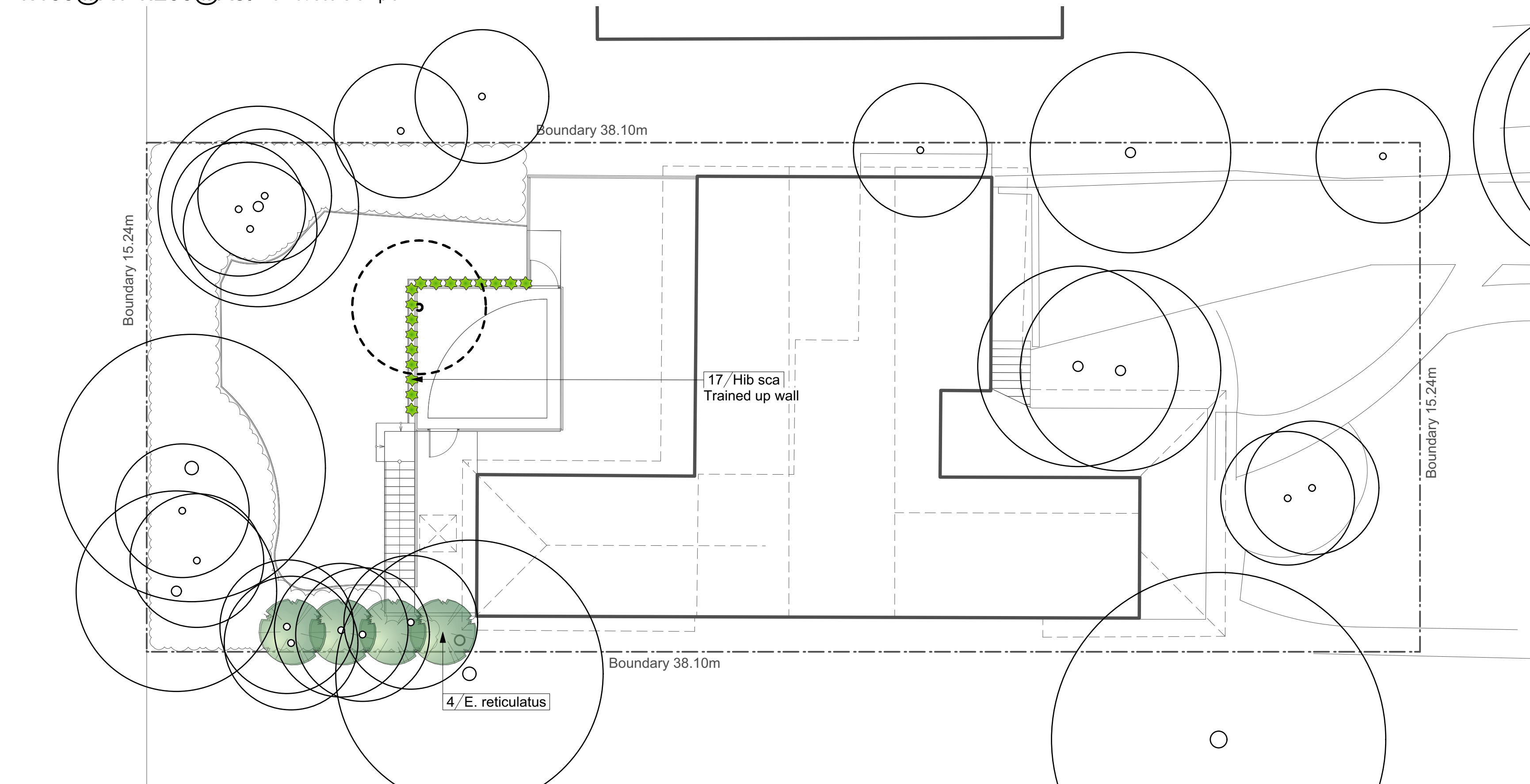


1:100@A1 1:200@A3. Do not scale off plan

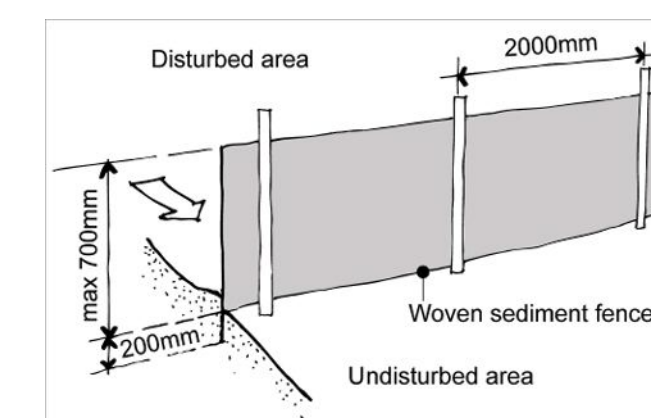


1:100@A1 1:200@A3. Do not scale off plan



	MULCH AREA
	TURF AREA
	TIMBER DECKING
	CONCRETE PAVING
	UNIT PAVING
	STAIRS
	PEBBLE
	GRAVEL
	COBBLESTONE
	TIMBER
	WATER
	MASONRY RETAINING WALL
	STONE RETAINING WALL
	TIMBER RETAINING WALL
	BOULDER RETAINING WALL
	SITE OR WORKS BOUNDARY
	PROPOSED LEVEL
	TOP OF WALL LEVEL
	MATERIAL NAME
	SURFACE FALL DIRECTION
	SURFACE DRAINS
	SURVEY (50% GREY LINES)
	EXISTING TREE TO RETAIN
	EXISTING TREE TO REMOVE
	EXISTING ROCK OUTCROP

AREA CALCULATION		
	AREA (m2)	PERCENTAGE
Site	575,40	
Landscape total as per DCP	256,17	44,52



Sedimentation Control Fence
Not to scale.

Source: www.yourhome.gov.au



ELAEOCARPUS



HIBBERTIA SCANDENS

ID	Quantity	Latin Name	Common Name	Scheduled Size	Mature Height	Mature Spread
E. reticulatus	4	Elaeocarpus reticulatus	Blueberry Ash	25lt	5 - 10m	3.5 - 6m
Hib sca	17	Hibbertia scandens	Golden Guinea Flower	150mm	0.0 - 0.3m	3.5 - 6m

Notes:

- >Do not scale off plan.
- >Contractors to check all measurements onsite before quoting or commencing work.
- >If abnormalities arise, contact the Landscape Architect.
- >This design is copyright and is not to be reproduced in anyway without written consent of Jamie King Landscape Architect

D	25/01/21	Issue D for DA
C	18/01/21	Issue C for DA
B	13/01/21	Issue B
A	20/12/20	DRAFT for review

ISSUE	DATE	REVISION
PROJECT	135 Palmgrove Road Avalon	PROJECT # 21056
CLIENT	Hutchinson	DATE # See above
		SCALE @ A1 See Plan
DWG	Master Landscape Plan	DRAWN SA
		CHKD JJK
		REVISION

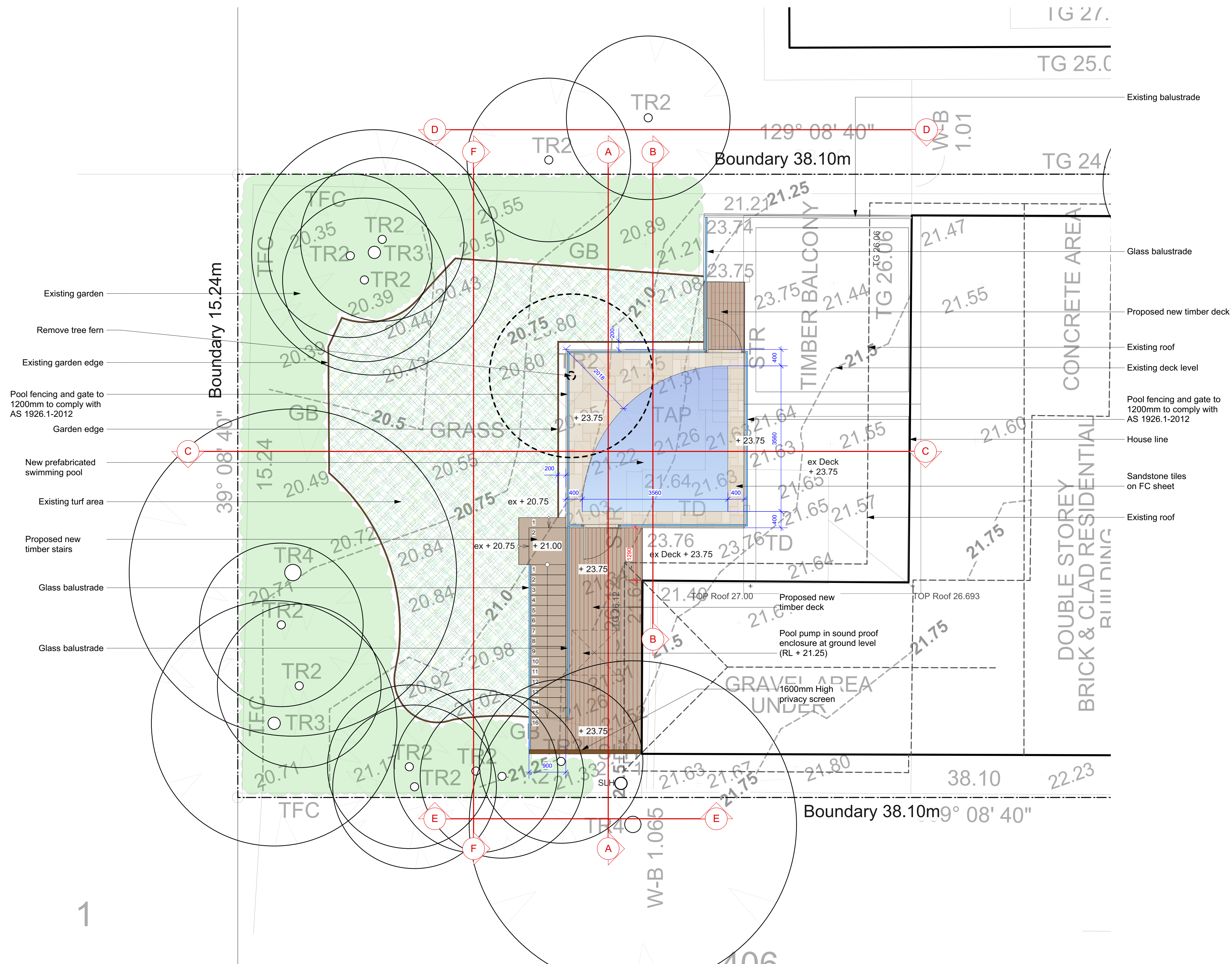
discrepancies or omissions during work.
 > If abnormalities arise, contact the
 Landscape Architect.
 > This design is copyright and is not to be
 reproduced in anyway without written consent
 of Jamie King Landscape Architect

Sht-101

Jamie King Landscape Architect W: www.jamieking.com.au
84 Palmgrove Rd, Avalon, NSW, 2107 T: 0421 517 991 E: jamie@jamieking.com.au



JAMIE KING
LANDSCAPE ARCHITECT
DESIGN • APPROVE • MANAGE



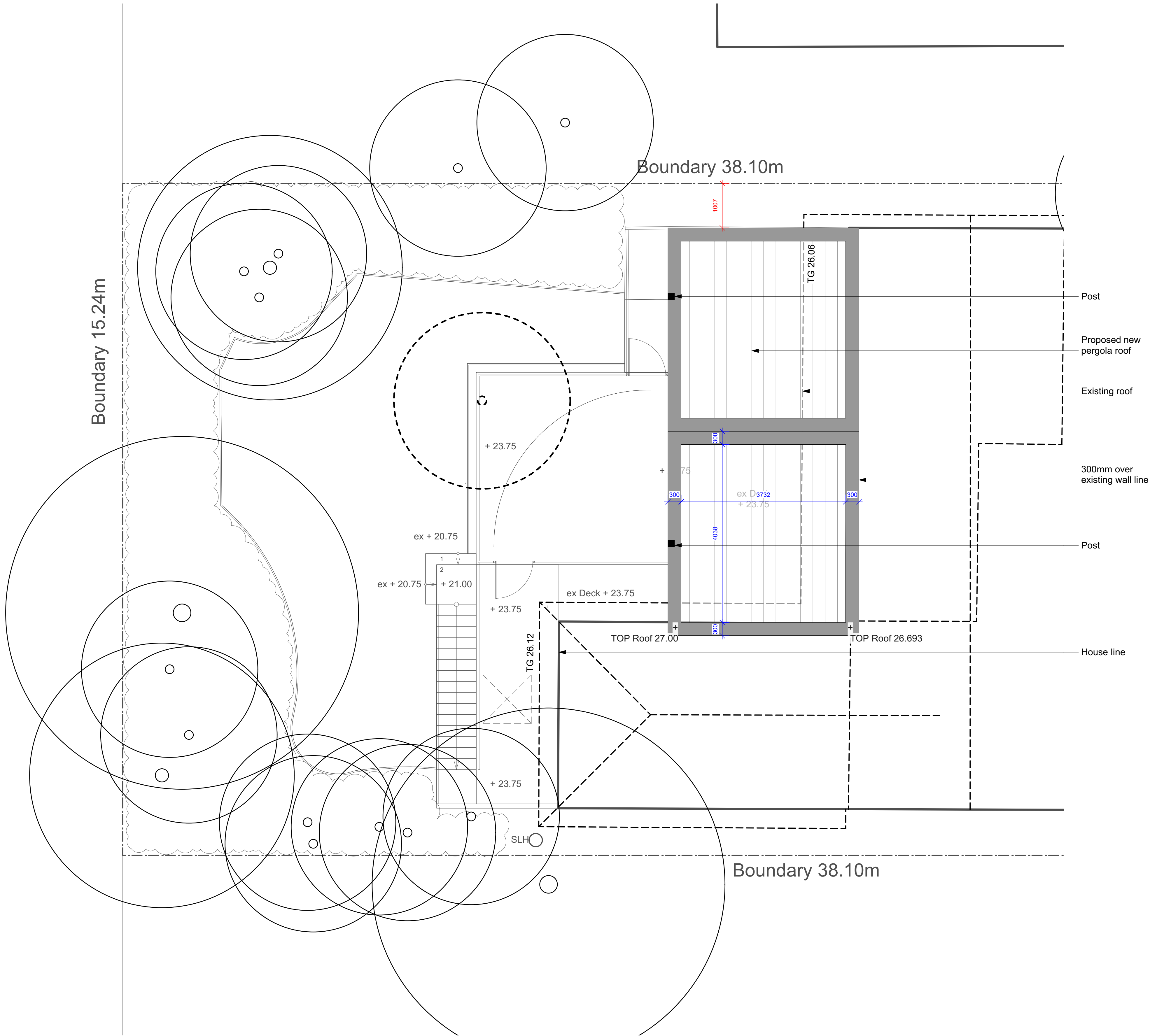
Legend

	MULCH AREA
	TURF AREA
	TIMBER DECKING
	CONCRETE PAVING
	UNIT PAVING
	STAIRS
	PEBBLE
	GRAVEL
	COBBLESTONE
	TIMBER
	WATER
	MASONRY RETAINING WALL
	STONE RETAINING WALL
	TIMBER RETAINING WALL
	BOULDER RETAINING WALL
	SITE OR WORKS BOUNDARY
	PROPOSED LEVEL
	TOP OF WALL LEVEL
	MATERIAL NAME
	SURFACE FALL DIRECTION
	SURFACE DRAINS
	SURVEY (50% GREY LINES)
	EXISTING TREE TO RETAIN
	EXISTING TREE TO REMOVE
	EXISTING ROCK OUTCROP

Notes:
Do not scale off plan.
Contractors to check all measurements
onsite before quoting or commencing work.
If abnormalities arise, contact the
Landscape Architect.
This design is copyright and is not to be
reproduced in anyway without written consent
of Jamie King Landscape Architect

C	25/01/21	Issue D for DA	>If abnormalities arise, contact the Landscape Architect. >This design is copyright and is not to be reproduced in anyway without written consent of Jamie King Landscape Architect	
C	18/01/21	Issue C for DA		
B	13/01/21	Issue B		
A	20/12/20	DRAFT issue for review		
ISSUE		DATE		REVISION
PROJECT 135 Palmgrove Road Avalon				PROJECT # 21056
CLIENT Hutchinson		DATE #	See above	DWG #
DWG Detail Plan		SCALE @ A1	See Plan	Sht-102
		DRAWN	SA	
		CHKD	JK	
		REVISION		

Jamie King Landscape Architect
84 Palmgrove Rd, Avalon, NSW, 2107 T: 0421 517 991
W: www.jamieking.com.au
E: jamie@jamieking.com.au



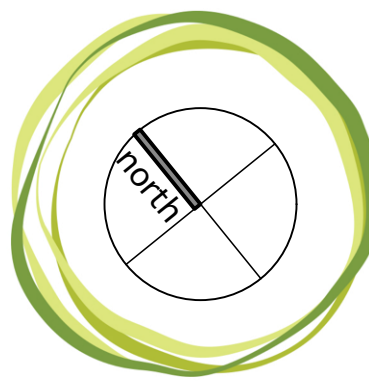
- Legend**
- MULCH AREA
 - TURF AREA
 - TIMBER DECKING
 - CONCRETE PAVING
 - UNIT PAVING
 - STAIRS
 - PEBBLE
 - GRAVEL
 - COBBLESTONE
 - TIMBER
 - WATER
 - MASONRY RETAINING WALL
 - STONE RETAINING WALL
 - TIMBER RETAINING WALL
 - BOULDER RETAINING WALL
 - SITE OR WORKS BOUNDARY
 - + 88.88 PROPOSED LEVEL
 - +TW 88.88 TOP OF WALL LEVEL
 - Paving 1 MATERIAL NAME
 - Fall SURFACE FALL DIRECTION
 - SURFACE DRAINS
 - +88.88 SURVEY (50% GREY LINES)
 - EXISTING TREE TO RETAIN
 - EXISTING TREE TO REMOVE
 - EXISTING ROCK OUTCROP

Notes:
>Do not scale off plan.
>Contractors to check all measurements onsite before quoting or commencing work.
>If abnormalities arise, contact the Landscape Architect.
>This design is copyright and is not to be reproduced in anyway without written consent of Jamie King Landscape Architect

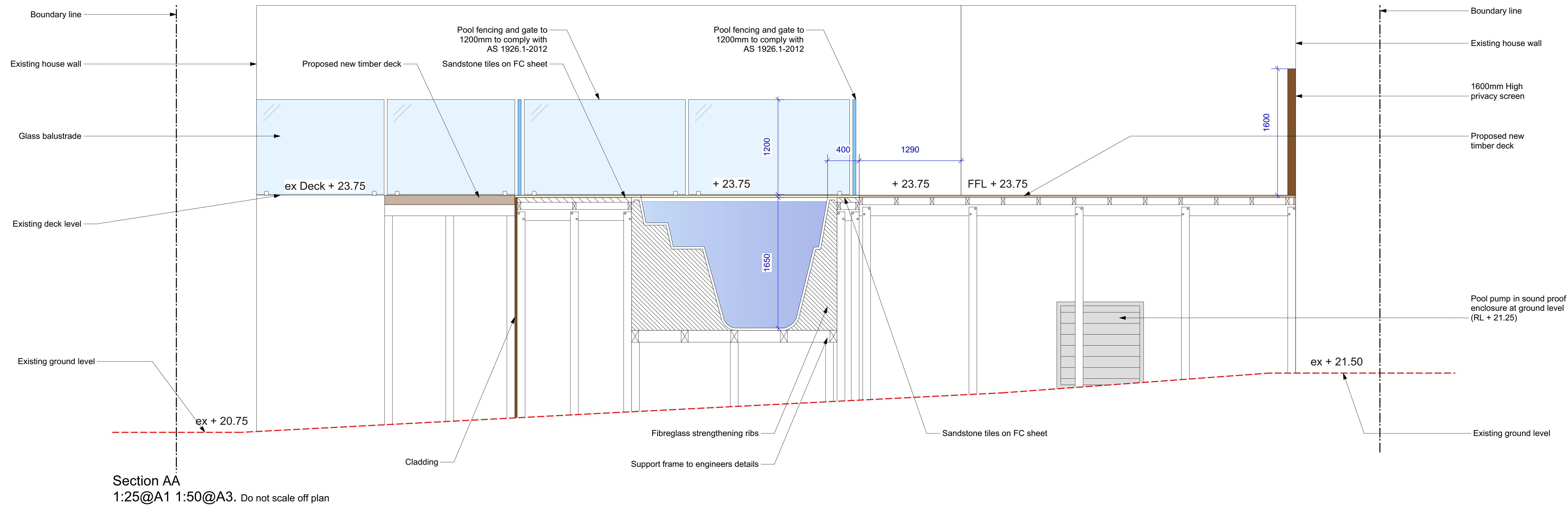
D	25/01/21	Issue D for DA
C	18/01/21	Issue C for DA
B	13/01/21	Issue B
A	20/12/20	DRAFT issue for review

ISSUE	DATE	REVISION
PROJECT	135 Palmgrove Road Avalon	
CLIENT	Hutchinson	PROJECT # 21056
DWG	Roof Plan	DWG # Sht-103
CHKD	JK	REVISION

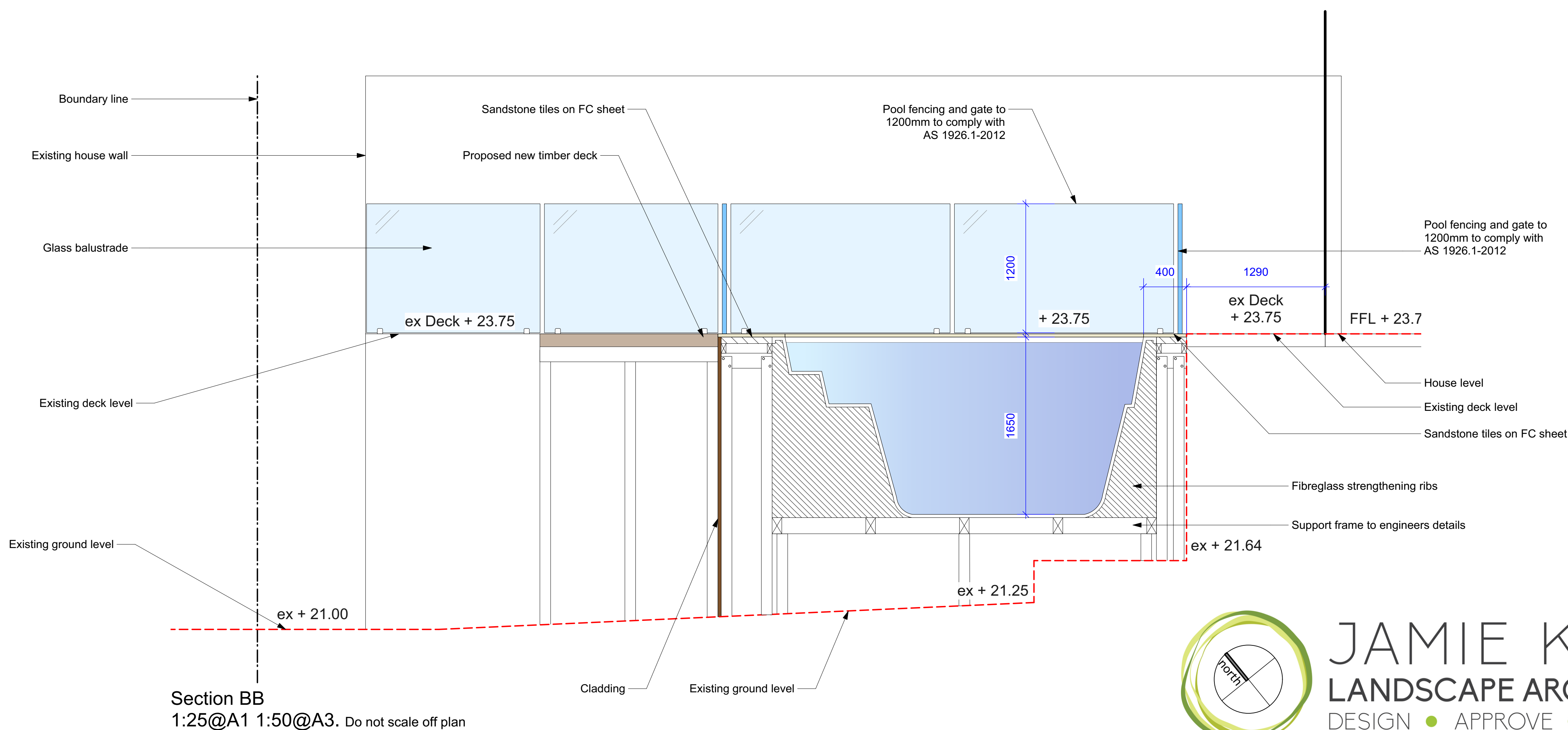
Jamie King Landscape Architect
84 Palmgrove Rd, Avalon, NSW, 2107 T: 0421 517 991 E: jamie@jamieking.com.au
W: www.jamieking.com.au



JAMIE KING
LANDSCAPE ARCHITECT
DESIGN ● APPROVE ● MANAGE



Section AA
1:25@A1 1:50@A3. Do not scale off plan



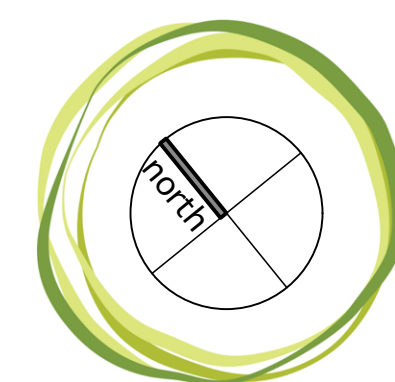
Section BB
1:25@A1 1:50@A3. Do not scale off plan

Notes:
>Do not scale off plan.
>Contractors to check all measurements onsite before quoting or commencing work.
>If abnormalities arise, contact the Landscape Architect.
>This design is copyright and is not to be reproduced in anyway without written consent of Jamie King Landscape Architect

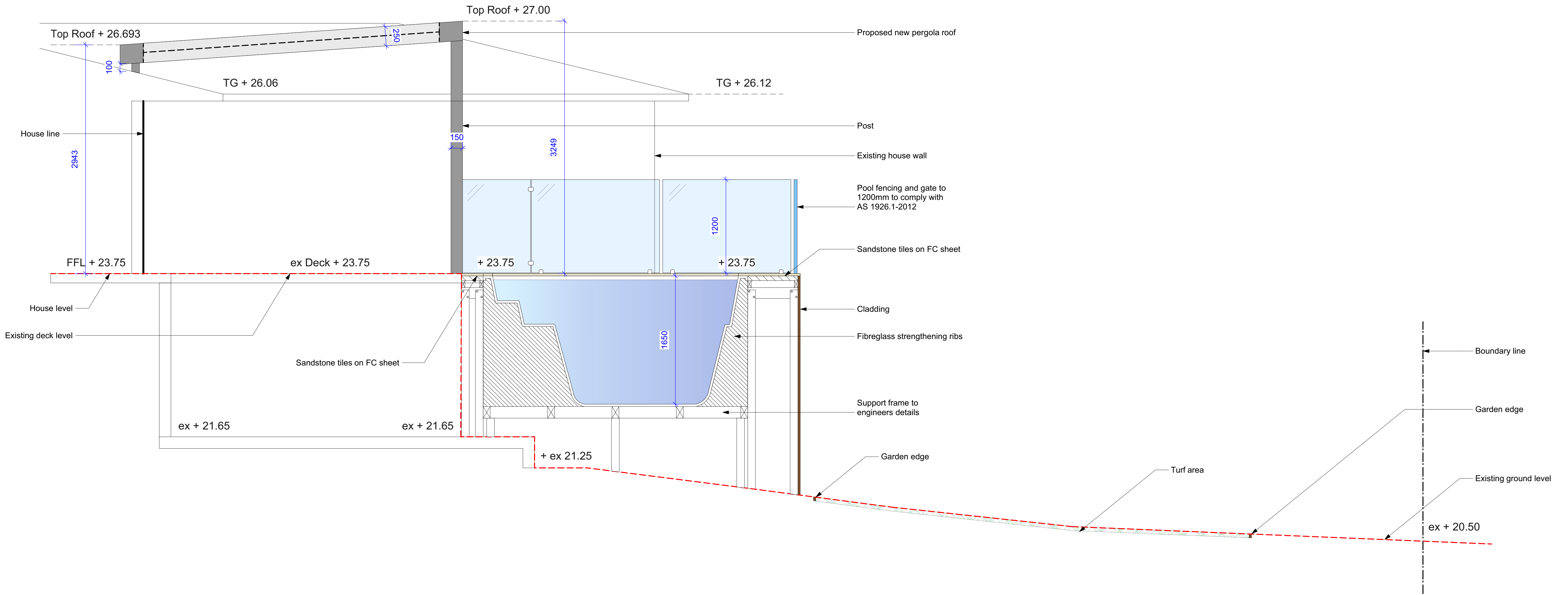
D	25/01/21	Issue D for DA
C	18/01/21	Issue C for DA
B	13/01/21	Issue B
A	20/12/20	DRAFT issue for review

ISSUE	DATE	REVISION	PROJECT #
PROJECT	135 Palmgrove Road Avalon		21056
CLIENT	Hutchinson	DATE # See above SCALE @ A1 See Plan	DWG # Sht-104
DWG	Sections	DRAWN SA CHKD JK	REVISION

Jamie King Landscape Architect
84 Palmgrove Rd, Avalon, NSW, 2107
T: 0421 517 991
W: www.jamieking.com.au
E: jamie@jamieking.com.au



JAMIE KING
LANDSCAPE ARCHITECT
DESIGN ● APPROVE ● MANAGE



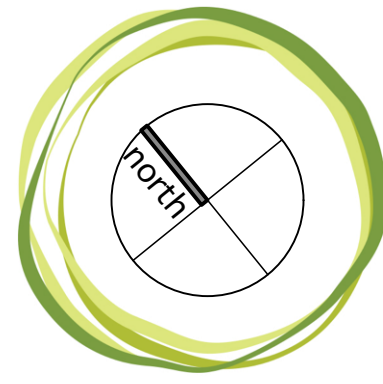
Section CC
1:25@A1 1:50@A3. Do not scale off plan

Notes:
>Do not scale off plan.
>Contractors to check all measurements onsite before quoting or commencing work.
>If abnormalities arise, contact the Landscape Architect.
>This design is copyright and is not to be reproduced in anyway without written consent of Jamie King Landscape Architect

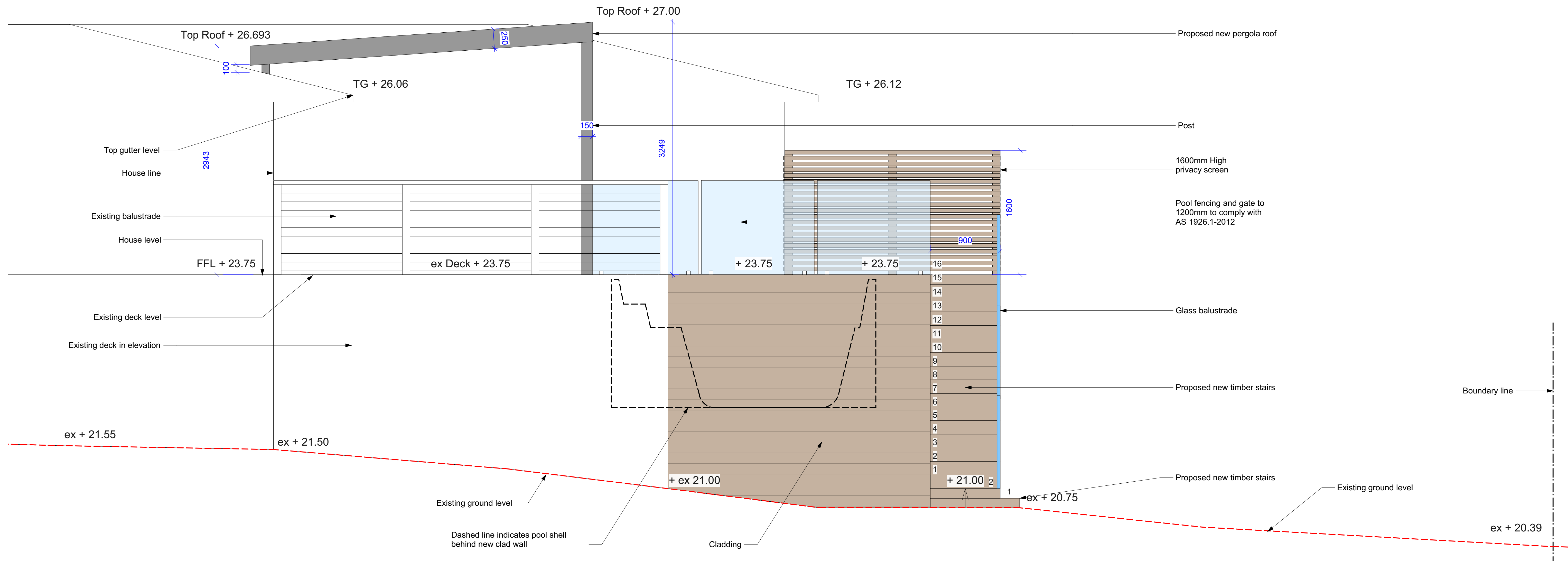
ISSUE	DATE	REVISION
D	25/01/21	Issue D for DA
C	18/01/21	Issue C for DA
B	13/01/21	Issue B
A	20/12/20	DRAFT issue for review

PROJECT	135 Palmgrove Road Avalon	PROJECT #	21056
CLIENT	Hutchinson	DATE #	See above
DWG	Sections	SCALE @ A1	See Plan
CHKD	JK	DRAWN	SA
		REVISION	

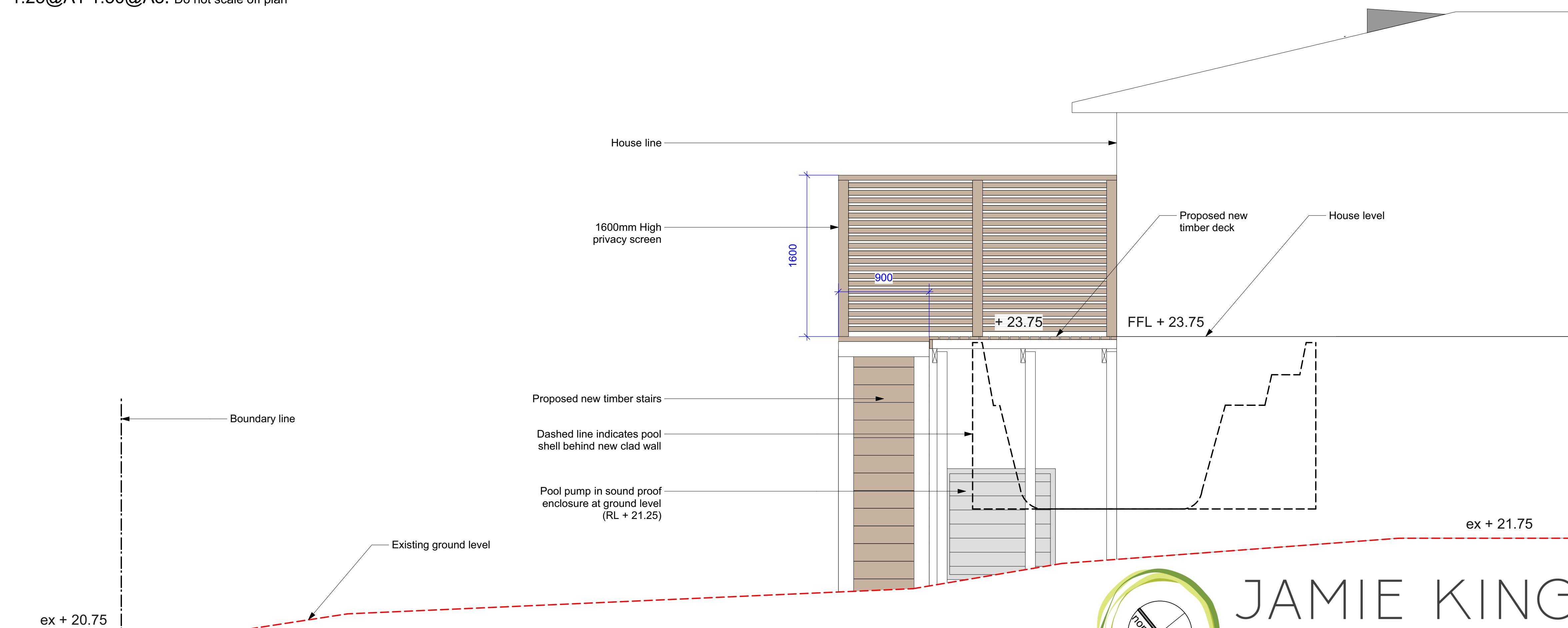
Jamie King Landscape Architect
84 Palmgrove Rd, Avalon, NSW, 2107
W: www.jamieking.com.au
T: 0421 517 991
E: jamie@jamieking.com.au



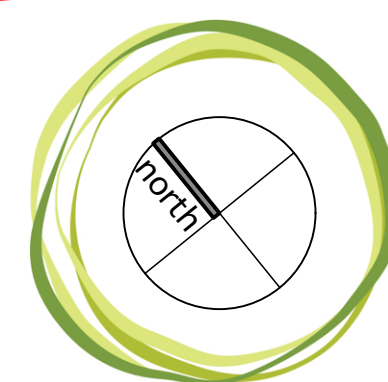
JAMIE KING
LANDSCAPE ARCHITECT
DESIGN ● APPROVE ● MANAGE



Elevation D (North)
1:25@A1 1:50@A3. Do not scale off plan



Elevation E (South)
1:25@A1 1:50@A3. Do not scale off plan



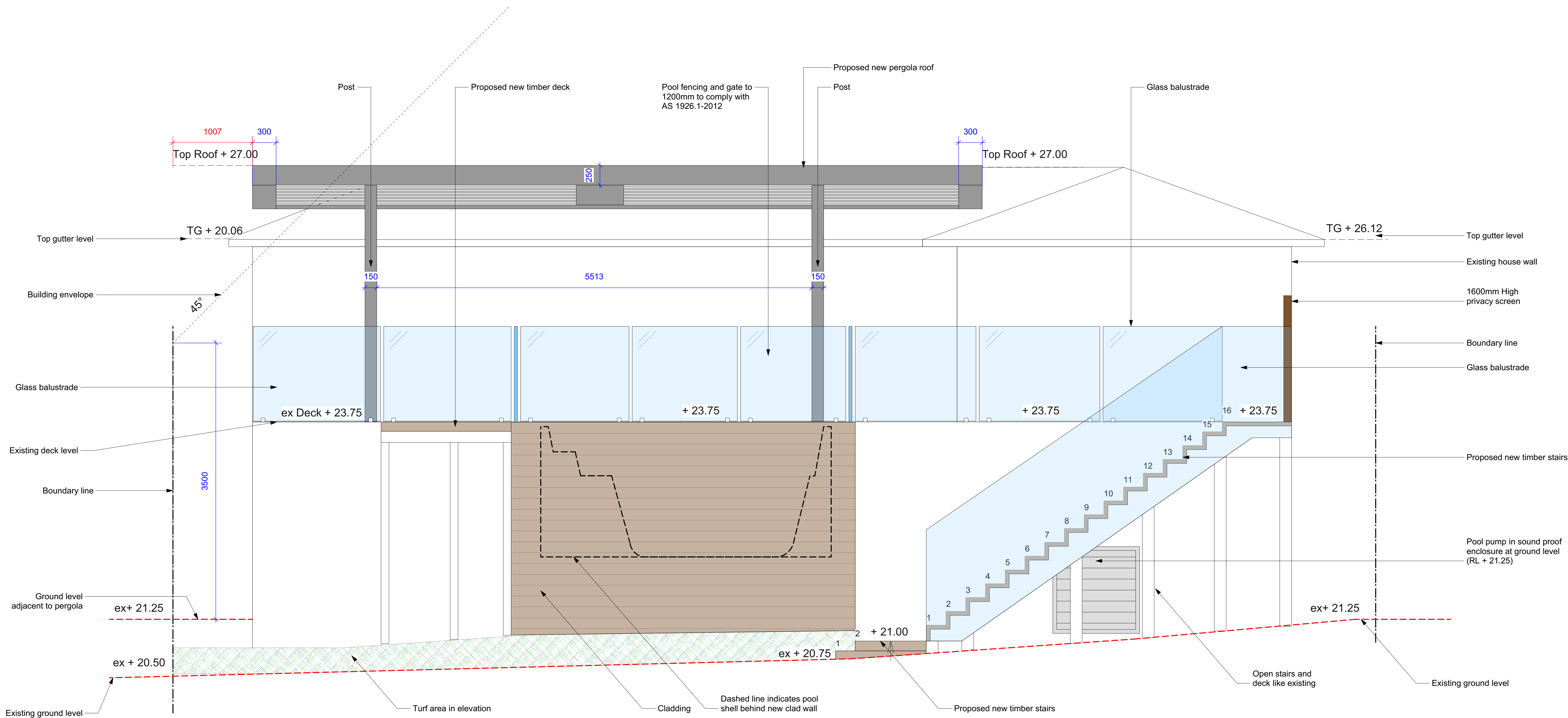
JAMIE KING
LANDSCAPE ARCHITECT
DESIGN ● APPROVE ● MANAGE

ISSUE	DATE	REVISION	PROJECT #
PROJECT	25/01/21	Issue D for DA	21056
CLIENT	18/01/21	Issue C for DA	
DWG	13/01/21	Issue B	
CHKD	20/12/20	DRAFT issue for review	
PROJECT	135 Palmgrove Road Avalon	DATE #	See above
CLIENT	Hutchinson	SCALE @ A1	See Plan
DWG	Elevations	DRAWN	SA
CHKD	JK	REVISION	

Notes:
>Do not scale off plan.
>Contractors to check all measurements onsite before quoting or commencing work.
>If abnormalities arise, contact the Landscape Architect.
>This design is copyright and is not to be reproduced in anyway without written consent of Jamie King Landscape Architect

Jamie King Landscape Architect
84 Palmgrove Rd, Avalon, NSW, 2107 T: 0421 517 991 E: jamie@jamieking.com.au

W: www.jamieking.com.au
E: jamie@jamieking.com.au



Elevation F (West)
1:25@A1 1:50@A3. Do not scale off plan

Notes:
>Do not scale off plan.
>Contractors to check all measurements onsite before quoting or commencing work.
>If abnormalities arise, contact the Landscape Architect.
>This design is copyright and is not to be reproduced in anyway without written consent of Jamie King Landscape Architect

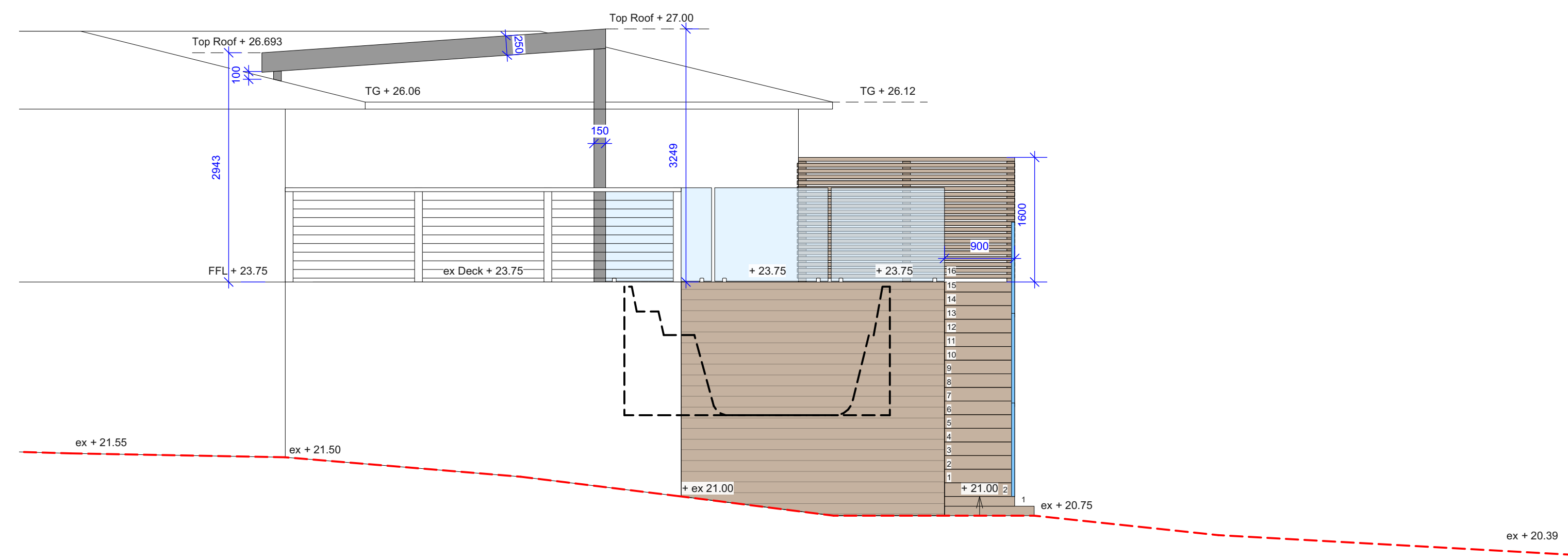
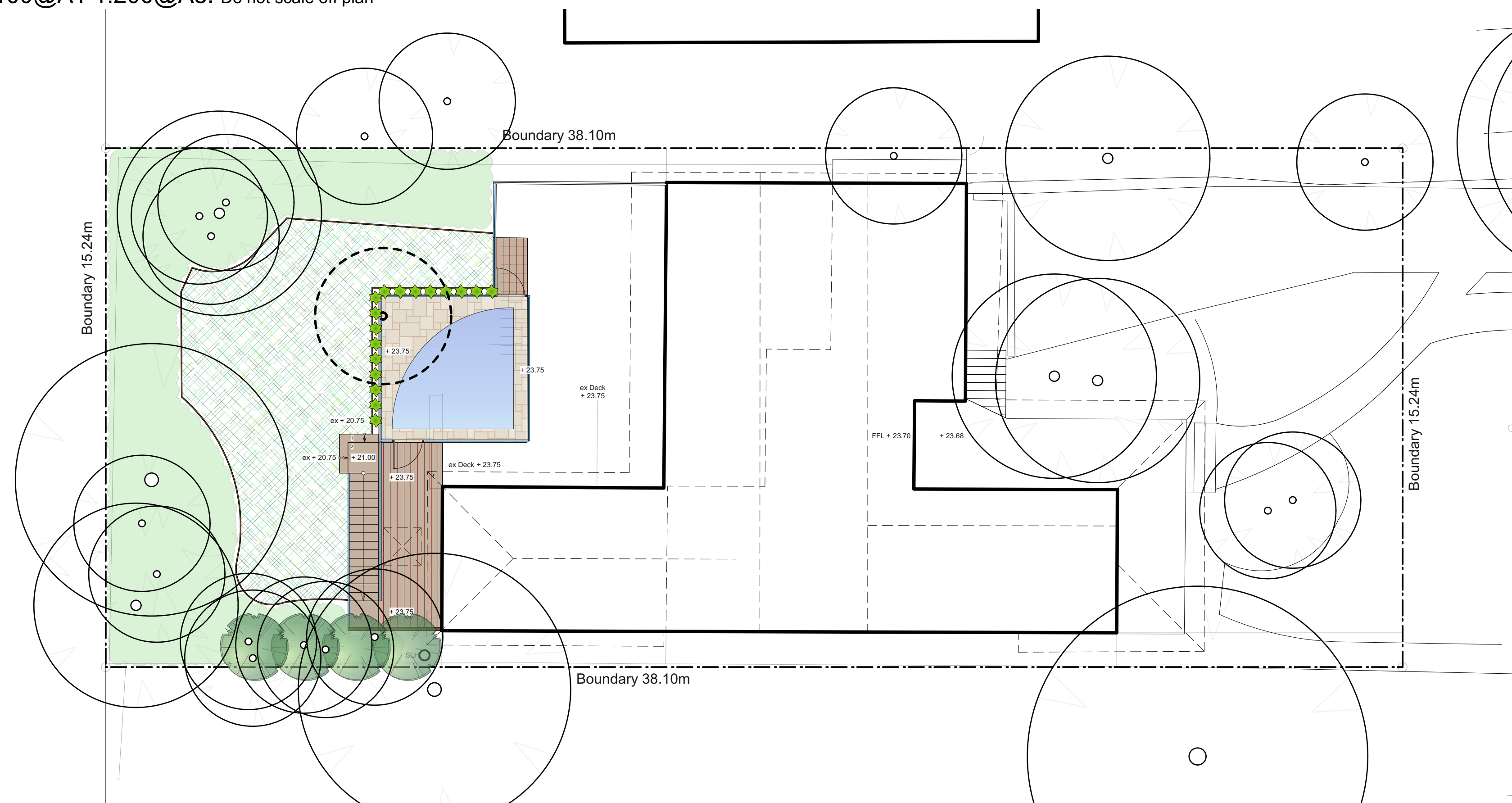
ISSUE	DATE	REVISION
D	25/01/21	Issue D for DA
C	18/01/21	Issue C for DA
B	13/01/21	Issue B
A	20/12/20	DRAFT issue for review

PROJECT	135 Palmgrove Road Avalon	PROJECT #	21056
CLIENT	Hutchinson	DATE #	See above
DWG	Elevations	SCALE @ A1	See Plan
CHKD	JK	DRAWN	SA
		REVISION	

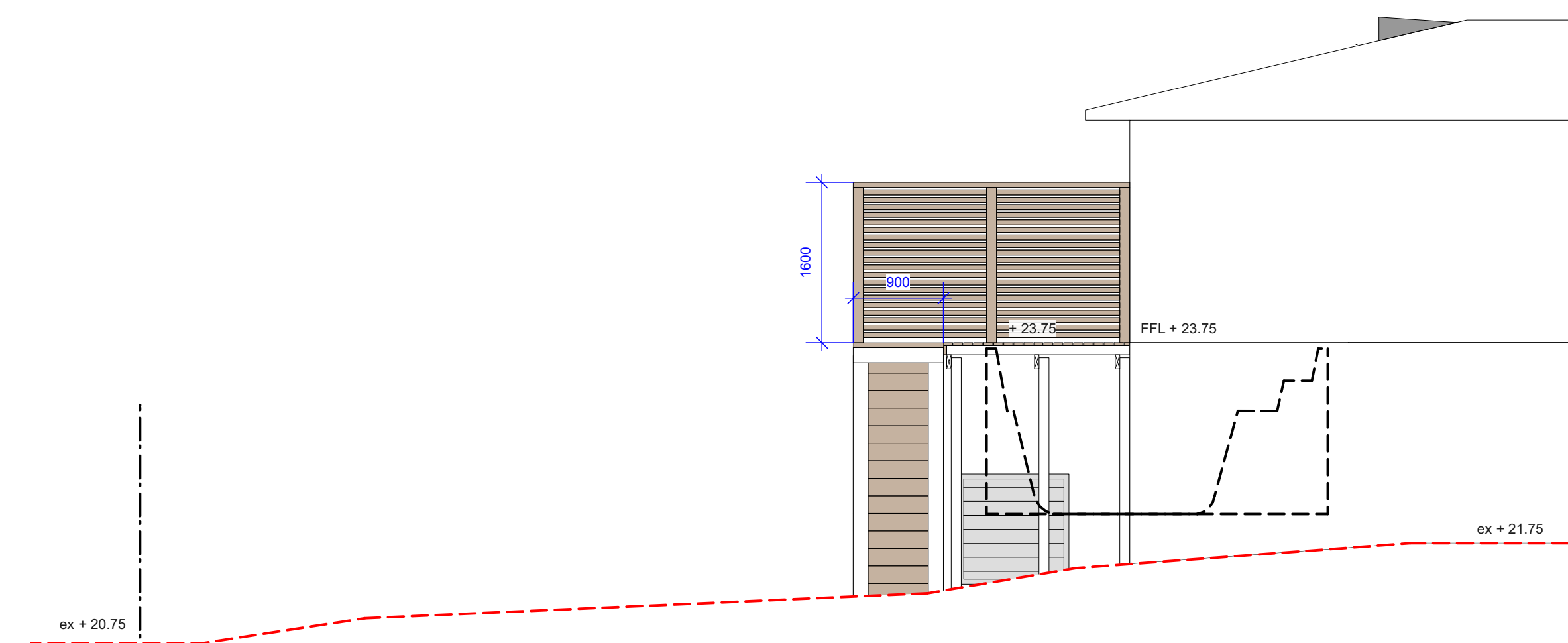
Jamie King Landscape Architect
84 Palmgrove Rd, Avalon, NSW, 2107
W: www.jamieking.com.au
T: 0421 517 991
E: jamie@jamieking.com.au

JAMIE KING
LANDSCAPE ARCHITECT
DESIGN • APPROVE • MANAGE

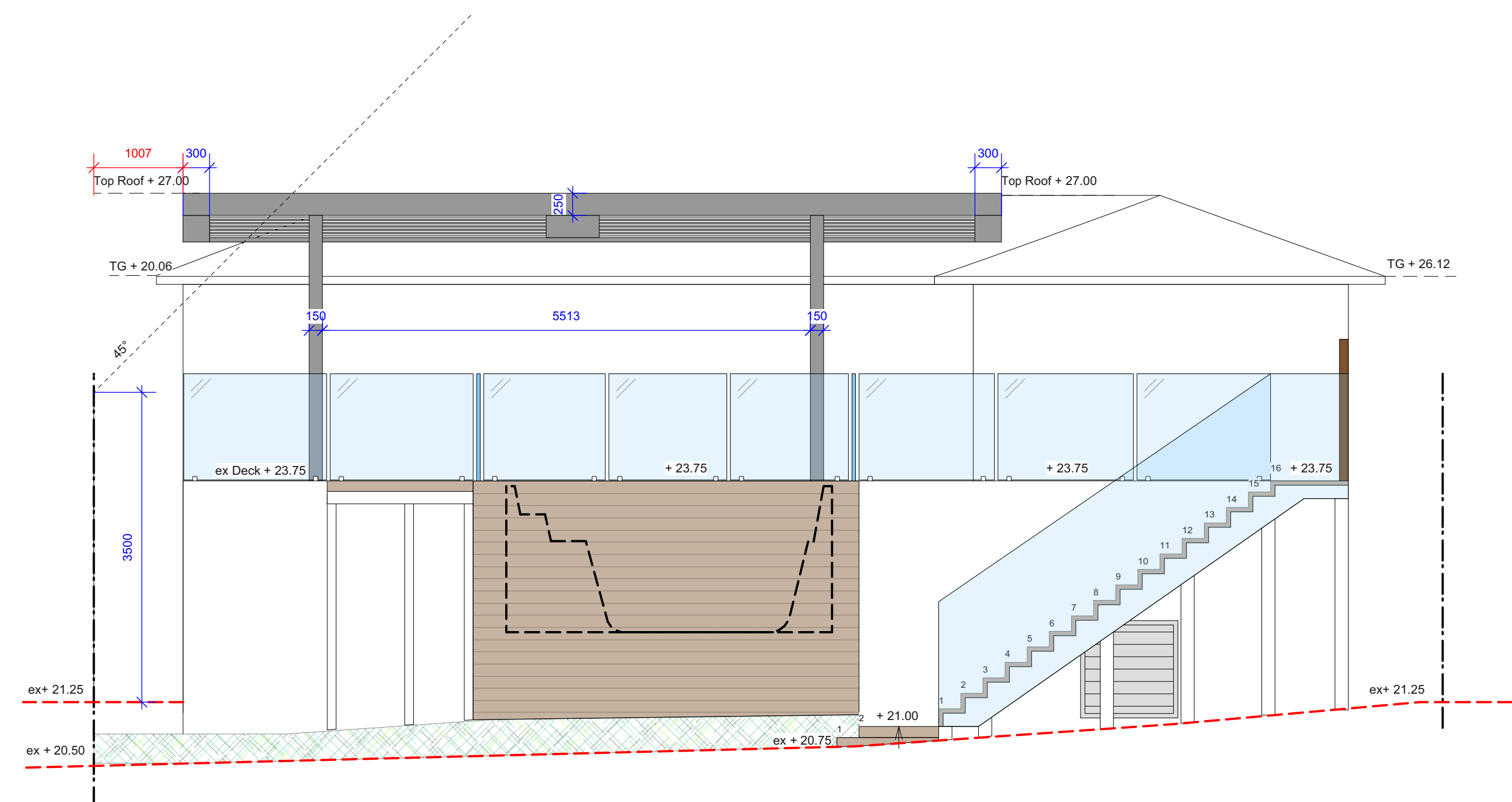
1:100@A1 1:200@A3. Do not scale off plan



1:50@A1 1:100@A3. Do not scale off plan



1:50@A1 1:100@A3. Do not scale off plan

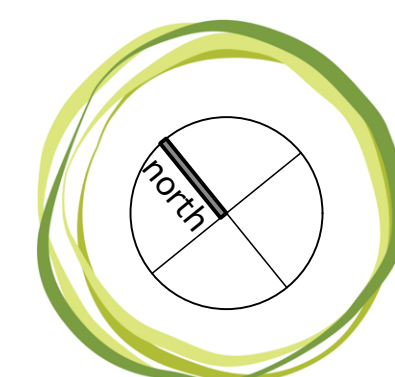


1:50@A1 1:100@A3. Do not scale off plan

Notes:
 >Do not scale off plan.
 >Contractors to check all measurements onsite before quoting or commencing work.
 >If abnormalities arise, contact the Landscape Architect.
 >This design is copyright and is not to be reproduced in anyway without written consent of Jamie King Landscape Architect

D	25/01/21	Issue D for DA	<div>>If abnormalities arise, contact the Landscape Architect.</div> <div>>This design is copyright and is not to be reproduced in anyway without written consent of Jamie King Landscape Architect</div>			
C	18/01/21	Issue C for DA				
B	13/01/21	Issue B				
A	20/12/20	DRAFT issue for review				
ISSUE		DATE	REVISION			
PROJECT		135 Palmgrove Road Avalon			PROJECT #	21056
CLIENT		Hutchinson			DATE #	See above
DWG	Notification Plan			SCALE @ A1	See Plan	
				DRAWN	SA	
				CHKD	JK	
			REVISION			

Jamie King Landscape Architect W: www.jamieking.com.au
84 Palmgrove Rd, Avalon, NSW, 2107 T: 0421 517 991 E: jamie@jamieking.com.au



JAMIE KING
LANDSCAPE ARCHITECT
DESIGN • APPROVE • MANAGE