

Drawing No.	Drawing Title	Issue	Date
DA000	Cover Sheet & Drawing List	C	14/10/2016
DA109	Roof	D	14/10/2016
DA111	Elevation 1 Evans Street	D	14/10/2016
DA112	Elevation 2 Carrington Parade	D	14/10/2016
DA113	Elevation 3 - Lumsdaine Drive	D	14/10/2016
DA114	Elevation 4 - McKillop Park	D	14/10/2016
DA115	Courtyard Elevations - Sheet 1	D	14/10/2016
DA116	Courtyard Elevations - Sheet 2	D	14/10/2016
DA117	Courtyard Elevations - Sheet 3	D	14/10/2016
DA150	Materials Board	C	14/10/2016

Architectus Sydney Pty Ltd and CHROFI are the owner of the copyright subsisting in these drawings, plans, designs and specifications. They must not be used, reproduced or copied, in whole or in part, nor may the information, ideas and concepts therein contained (which are confidential to Architectus Sydney Pty Ltd and CHROFI) and be disclosed to any person without the prior written consent of that company.

NOT FOR CONSTRUCTION



Do not scale drawings. Verify all dimensions on site

issue	amendment	date
A	DEVELOPMENT APPLICATION	01.08.2014
B	S96 APPLICATION	15.07.2015
C	S96 APPLICATION	14.10.2016



client



architectus™ + CHROFI

Architectus Sydney
Level 18 MLC Centre
19 Martin Place
Sydney NSW 2000
T (61 2) 8252 8400
F (61 2) 8252 8600
sydney@architectus.com.au

CHROFI
3/1 The Corso
Marrily NSW 2095
T (61 2) 9977 3700
sydney@chrofi.com

project

Harbord Diggers
80 Evans Street Freshwater

drawing

Cover Sheet & Drawing List

scale at A1 status drawing no.

drawn Author **DA000**

checked Checker issue

project no AR-140132.01 **C**
CRF-1354

Architectus Sydney Pty Ltd and CHROFI are the owner of the copyright subsisting in these drawings, plans, designs and specifications. They must not be used, reproduced or copied, in whole or in part, nor may the information, ideas and concepts therein contained (which are confidential to Architectus Sydney Pty Ltd and CHROFI) and be disclosed to any person without the prior written consent of that company.

NOT FOR CONSTRUCTION



Do not scale drawings. Verify all dimensions on site

issue	amendment	date
A	DEVELOPMENT APPLICATION	01.08.2014
B	PRE DA MEETING - S96	15.05.2015
C	S96 APPLICATION	15.07.2015
D	S96 APPLICATION	14.10.2016

--- APPROVED DA OUTLINE



client



architectus + CHROFI

Architectus Sydney
Level 18 MLC Centre
19 Martin Place
Sydney NSW 2000
T (61 2) 8252 8400
F (61 2) 8252 8600
sydney@architectus.com.au

CHROFI
3/1 The Corso
Manly NSW 2095
T (61 2) 9977 3700
sydney@chrofi.com

project

Harbord Diggers
80 Evans Street Freshwater

drawing

Roof Level

scale

1:250 at A1

status

drawing no.

drawn

Author

DA109

checked

Checker

issue

project no

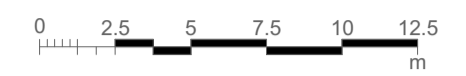
AR-140132.01
CRF-1354

D

10/14/2016 4:25:47 PM

Architectus Sydney Pty Ltd and CHROFI are the owner of the copyright subsisting in these drawings, plans, designs and specifications. They must not be used, reproduced or copied, in whole or in part, nor may the information, ideas and concepts therein contained (which are confidential to Architectus Sydney Pty Ltd and CHROFI) and be disclosed to any person without the prior written consent of that company.

NOT FOR CONSTRUCTION



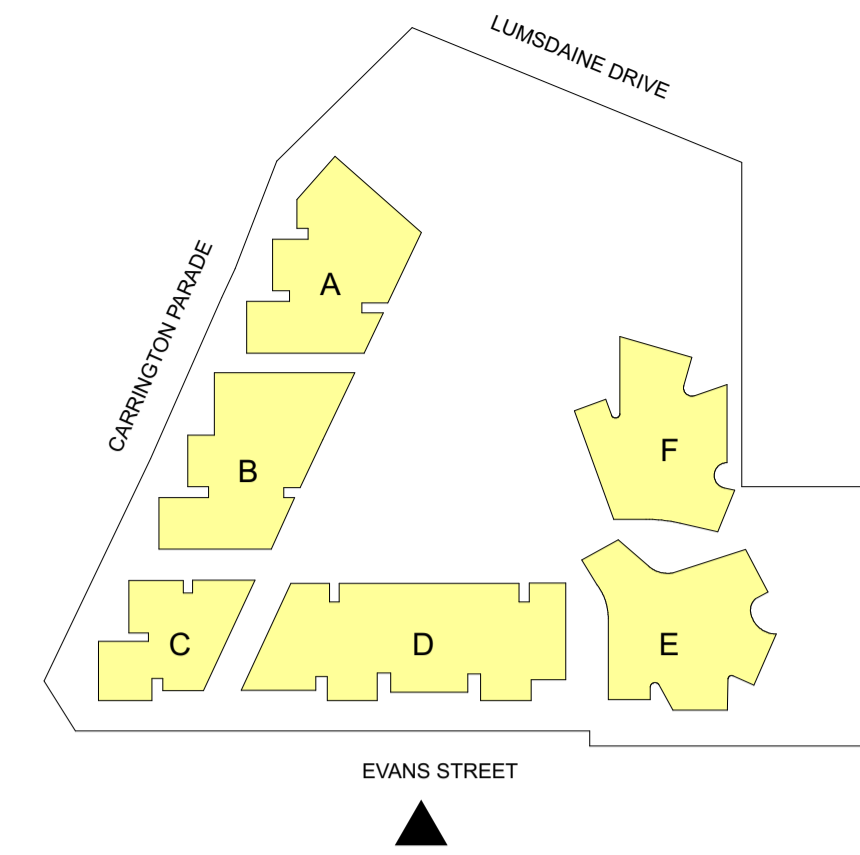
Do not scale drawings. Verify all dimensions on site

issue	amendment	date
A	DEVELOPMENT APPLICATION	01.08.2014
B	PRE DA MEETING_S96	15.05.2015
C	S96 APPLICATION	15.07.2015
D	S96 APPLICATION	14.10.2016

FINISHES LEGEND

- C1 Sandstone (medium)
- C2 Cladding
- C3 Sandstone (light)
- WF Window Frame Dark Bronze
- S1 Operable Vertical Louvre Screens Dark Bronze
- S3 Operable Vertical Louvre Screens Dark Bronze
- S4 Vertical Screens
- S5 Vertical Battens over Glazed Wall
- S6 Vertical Louvre Screens - Warm Grey
- GL Glazing
- F1 Timber and Render Fence
- F2 Sandstone Wall
- B1 Frameless Glass Balustrade
- B2 Dark Bronze Balustrade
- WG Operable Bifold Glass Winter Garden Facade
- R1 Render

Minor adjustment to material palette



1 Elevation - Evans Street



2 Elevation - Evans Street
Scale 1:250

GENERAL NOTES:
- Minor adjustments to window sizing and placement
- Minor reduction in sliding screen quantities



architectus + CHROFI

Architectus Sydney
Level 18 MLC Centre
19 Martin Place
Sydney NSW 2000
T (61 2) 8252 8400
F (61 2) 8252 8600
sydney@architectus.com.au

CHROFI
3/1 The Corso
Marrily NSW 2095
T (61 2) 9977 3700
sydney@chrofi.com

project
Harbord Diggers
80 Evans Street Freshwater

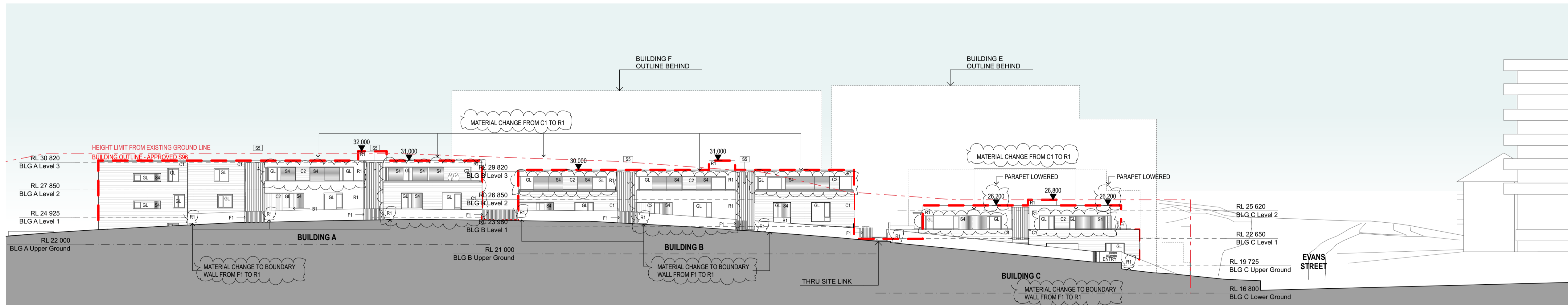
drawing
Elevation 1 Evans Street

SECTION 96

scale	1:250	at	A1	status	drawing no.
drawn	DA, MT				DA111
checked	MC & TR			issue	
project no	AR-140132 CRF-1354				D



1 Elevation - Carrington Parade

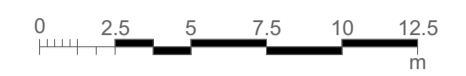


2 Elevation - Carrington Parade
Scale 1:250

GENERAL NOTES:
- Minor adjustments to window sizing and placement
- Minor reduction in sliding screen quantities

Architectus Sydney Pty Ltd and CHROFI are the owner of the copyright subsisting in these drawings, plans, designs and specifications. They must not be used, reproduced or copied, in whole or in part, nor may the information, ideas and concepts therein contained (which are confidential to Architectus Sydney Pty Ltd and CHROFI) and be disclosed to any person without the prior written consent of that company.

NOT FOR CONSTRUCTION



Do not scale drawings. Verify all dimensions on site

issue	amendment	date
A	DEVELOPMENT APPLICATION	01.08.2014
B	PRE DA MEETING_S96	15.05.2015
C	S96 APPLICATION	15.07.2015
D	S96 APPLICATION	14.10.2016

FINISHES LEGEND

- C1 Sandstone (medium)
- C2 Cladding
- C3 Sandstone (light)
- WF Window Frame Dark Bronze
- S1 Operable Vertical Louvre Screens Dark Bronze
- S3 Operable Vertical Louvre Screens Dark Bronze
- S4 Vertical Screens
- S5 Vertical Batters over Glazed Wall
- S6 Vertical Louvre Screens - Warm Grey
- GL Glazing
- F1 Timber and Render Fence
- F2 Sandstone Wall
- B1 Frameless Glass Balustrade
- B2 Dark Bronze Balustrade
- WG Operable Bifold Glass Winter Garden Facade
- R1 Render

Minor adjustment to material palette



architectus + CHROFI

Architectus Sydney
Level 18 MLC Centre
19 Martin Place
Sydney NSW 2000
T (61 2) 8252 8400
F (61 2) 8252 8600
sydney@architectus.com.au

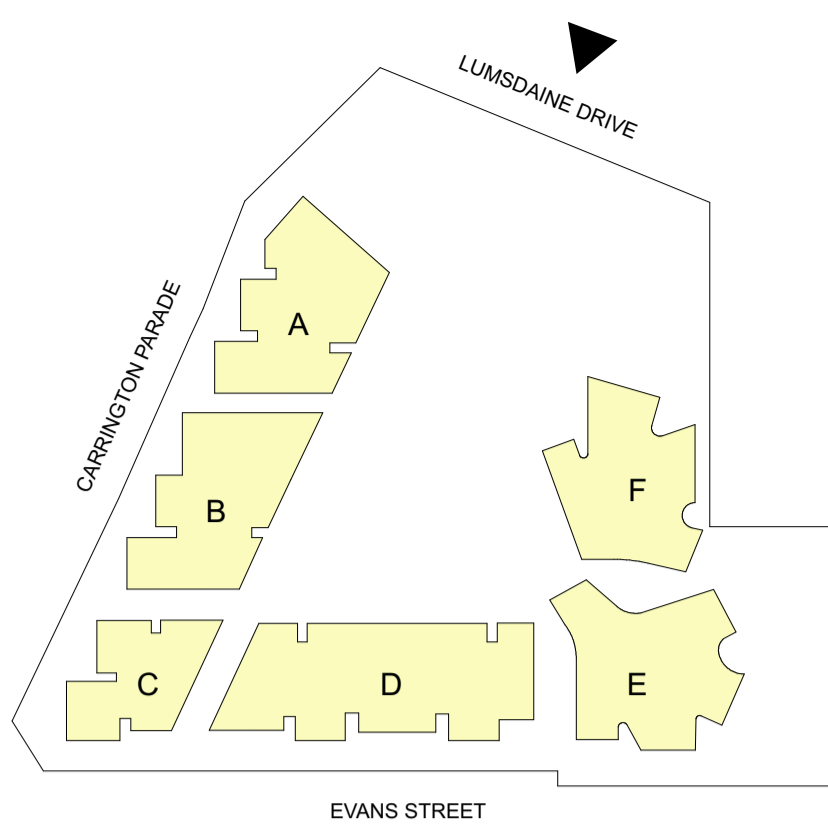
CHROFI
3/1 The Corso
Marrick NSW 2095
T (61 2) 9977 3700
sydney@chrofi.com

project
Harbord Diggers
80 Evans Street Freshwater

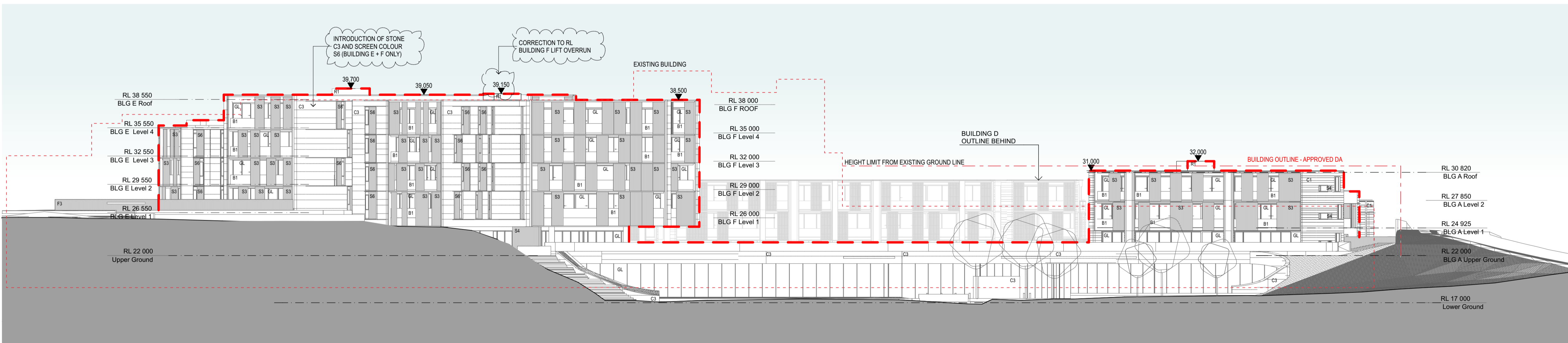
drawing
Elevation 2 Carrington Parade

SECTION 96

scale	at	status	drawing no.
1:250	A1		DA112
drawn	DA, MT		
checked	MC & TR	issue	
project no	AR-140132 CRF-1354		D



1 Elevation - Lumsdaine Drive

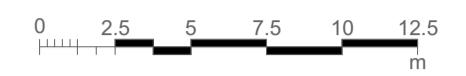


2 Elevation - Lumsdaine Drive

GENERAL NOTES:
 - Minor adjustments to window sizing and placement
 - Minor reduction in sliding screen quantities

Architectus Sydney Pty Ltd and CHROFI are the owner of the copyright subsisting in these drawings, plans, designs and specifications. They must not be used, reproduced or copied, in whole or in part, nor may the information, ideas and concepts therein contained (which are confidential to Architectus Sydney Pty Ltd and CHROFI) and be disclosed to any person without the prior written consent of that company.

NOT FOR CONSTRUCTION



Do not scale drawings. Verify all dimensions on site

issue	amendment	date
A	DEVELOPMENT APPLICATION	01.08.2014
B	PRE DA MEETING_S96	15.05.2015
C	S96 APPLICATION	15.07.2015
D	S96 APPLICATION	14.10.2016

FINISHES LEGEND

- C1 Sandstone (medium)
- C2 Cladding
- C3 Sandstone (light)
- WF Window Frame Dark Bronze
- S1 Operable Vertical Louvre Screens Dark Bronze
- S3 Operable Vertical Louvre Screens Dark Bronze
- S4 Vertical Screens
- S6 Vertical Batters over Glazed Wall
- S6 Vertical Louvre Screens - Warm Grey
- GL Glazing
- F1 Timber and Render Fence
- F2 Sandstone Wall
- B1 Frameless Glass Balustrade
- B2 Dark Bronze Balustrade
- WG Operable Bifold Glass Winter Garden Facade
- R1 Render

Minor adjustment to material palette



architectus + CHROFI

Architectus Sydney
 Level 18 MLC Centre
 19 Martin Place
 Sydney NSW 2000
 T (61 2) 8252 8400
 F (61 2) 8252 8600
 sydney@architectus.com.au

CHROFI
 3/1 The Corso
 Manly NSW 2095
 T (61 2) 9977 3700
 sydney@chrofi.com

project
 Harbord Diggers
 80 Evans Street Freshwater

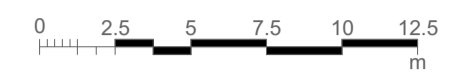
drawing
 Elevation 3 Lumsdaine Drive

SECTION 96

scale	1:250	at	A1	status	drawing no.
drawn	DA, MT				DA113
checked	MC & TR	issue			
project no	AR-140132 CRF-1354				D

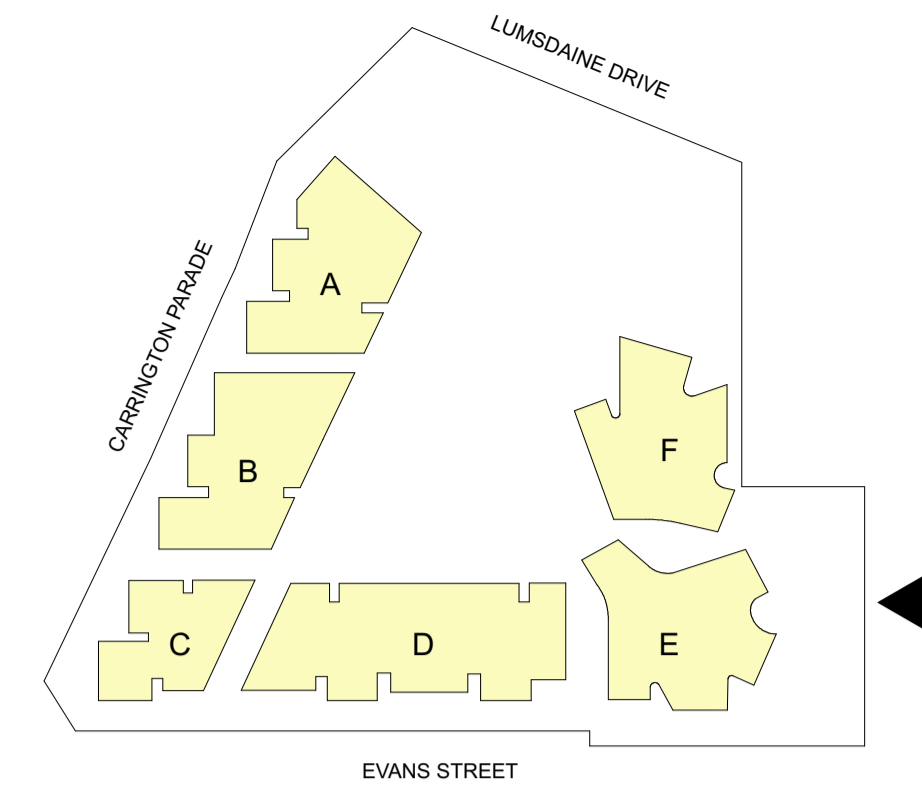
Architectus Sydney Pty Ltd and CHROFI are the owner of the copyright subsisting in these drawings, plans, designs and specifications. They must not be used, reproduced or copied, in whole or in part, nor may the information, ideas and concepts therein contained (which are confidential to Architectus Sydney Pty Ltd and CHROFI) and be disclosed to any person without the prior written consent of that company.

NOT FOR CONSTRUCTION



Do not scale drawings. Verify all dimensions on site

issue	amendment	date
A	DEVELOPMENT APPLICATION	01.08.2014
B	PRE DA MEETING_S96	15.05.2015
C	S96 APPLICATION	15.07.2015
D	S96 APPLICATION	14.10.2016



1 Elevation - McKillop Park

FINISHES LEGEND

- C1 Sandstone (medium)
- C2 Cladding
- C3 Sandstone (light)
- WF Window Frame Dark Bronze
- S1 Operable Vertical Louvre Screens Dark Bronze
- S3 Operable Vertical Louvre Screens Dark Bronze
- S4 Vertical Screens
- S5 Vertical Battens over Glazed Wall
- S6 Vertical Louvre Screens - Warm Grey
- GL Glazing
- F1 Timber and Render Fence
- F2 Sandstone Wall
- B1 Frameless Glass Balustrade
- B2 Dark Bronze Balustrade
- WG Operable Bifold Glass Winter Garden Facade
- R1 Render

Minor adjustment to material palette



2 Elevation - McKillop Park

GENERAL NOTES:
 - Minor adjustments to window sizing and placement
 - Minor reduction in sliding screen quantities



architectus + CHROFI

Architectus Sydney
 Level 18 MLC Centre
 19 Martin Place
 Sydney NSW 2000
 T (61 2) 8252 8400
 F (61 2) 8252 8600
 sydney@architectus.com.au

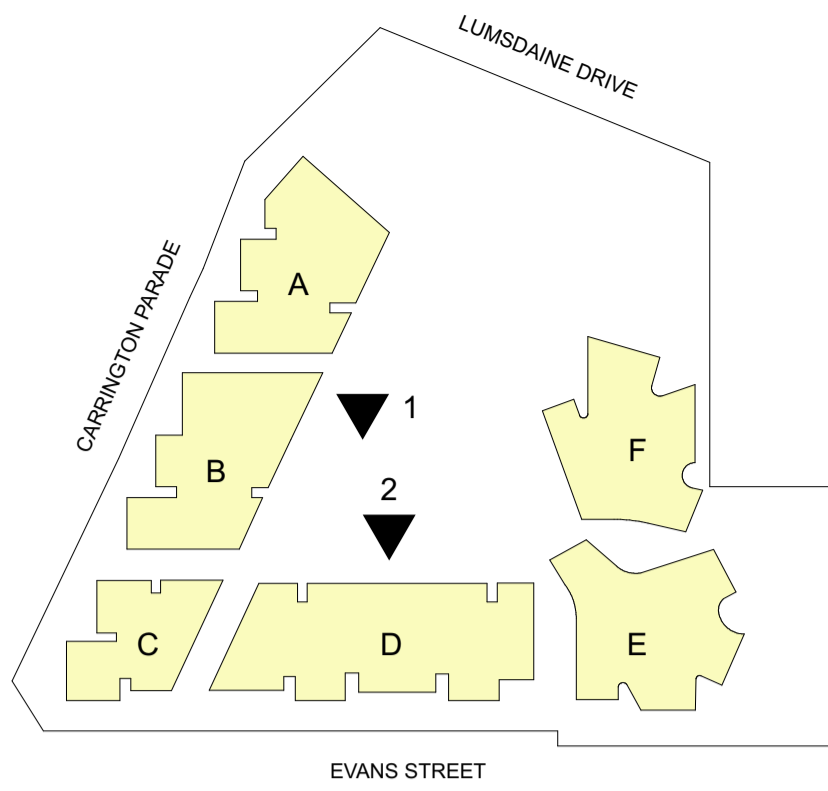
CHROFI
 3/1 The Corso
 Manly NSW 2095
 T (61 2) 9977 3700
 sydney@chrofi.com

project Harbord Diggers
 80 Evans Street Freshwater

drawing Elevation 4 McKillop Park

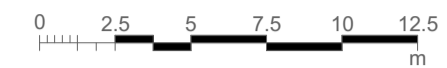
SECTION 96

scale	1:250	at	A1	status	drawing no.
drawn				DA, MT	DA114
checked				MC & TR	issue
project no	AR-140132			CRF-1354	D



Architectus Sydney Pty Ltd and CHROFI are the owner of the copyright subsisting in these drawings, plans, designs and specifications. They must not be used, reproduced or copied, in whole or in part, nor may the information, ideas and concepts therein contained (which are confidential to Architectus Sydney Pty Ltd and CHROFI) and be disclosed to any person without the prior written consent of that company.

NOT FOR CONSTRUCTION



Do not scale drawings. Verify all dimensions on site

issue	amendment	date
A	DEVELOPMENT APPLICATION	01.08.2014
B	PRE DA MEETING_S96	15.05.2015
C	S96 APPLICATION	15.07.2015
D	S96 APPLICATION	14.10.2016

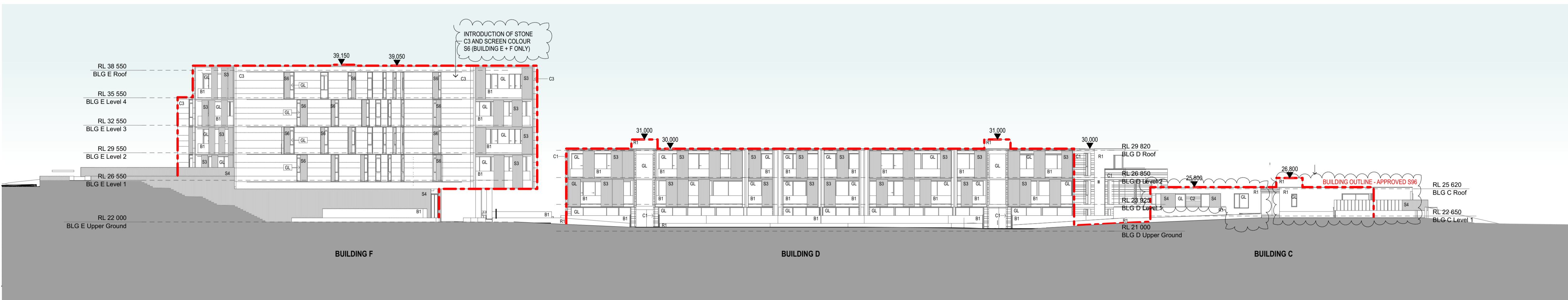
FINISHES LEGEND

- C1 Sandstone (medium)
- C2 Cladding
- C3 Sandstone (light)
- WF Window Frame Dark Bronze
- S1 Operable Vertical Louvre Screens Dark Bronze
- S3 Operable Vertical Louvre Screens Dark Bronze
- S4 Vertical Screens
- S5 Vertical Batters over Glazed Wall
- S6 Vertical Louvre Screens - Warm Grey
- GL Glazing
- F1 Timber and Render Fence
- F2 Sandstone Wall
- B1 Frameless Glass Balustrade
- B2 Dark Bronze Balustrade
- WG Operable Bifold Glass Winter Garden Facade
- R1 Render

Minor adjustment to material palette



1 GA Elevation - Courtyard East



2 GA Elevation - Courtyard North

GENERAL NOTES:
 - Minor adjustments to window sizing and placement
 - Minor reduction in sliding screen quantities

client



architectus + CHROFI

Architectus Sydney
 Level 18 MLC Centre
 19 Martin Place
 Sydney NSW 2000
 T (61 2) 8252 8400
 F (61 2) 8252 8600
 sydney@architectus.com.au

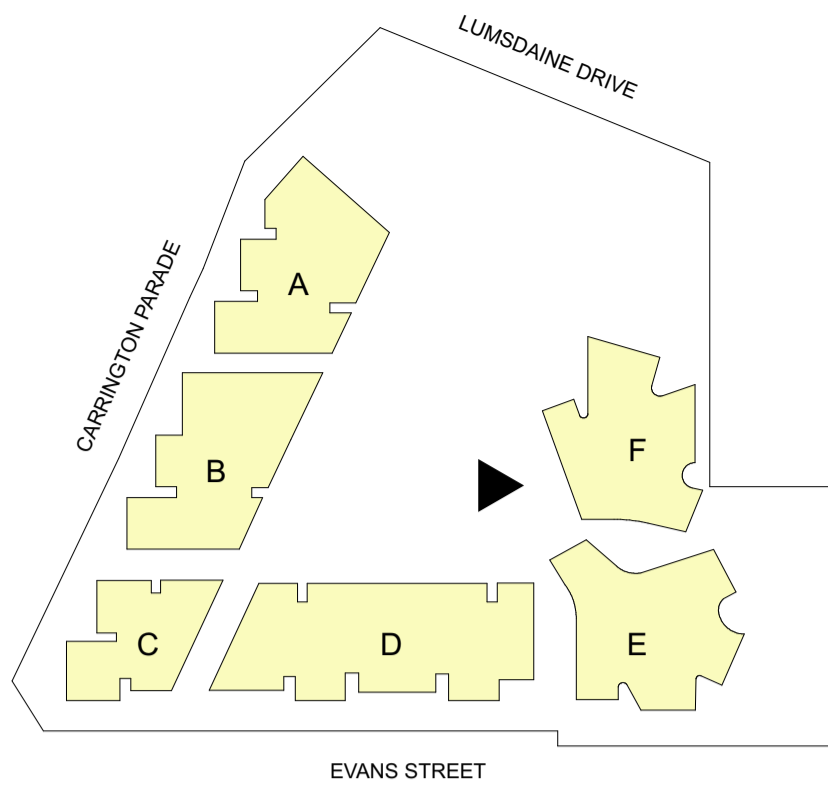
CHROFI
 3/1 The Corso
 Manly NSW 2095
 T (61 2) 9977 3700
 sydney@chrofi.com

project
 Harbord Diggers
 80 Evans Street Freshwater

drawing
 Courtyard Elevations - Sheet 1

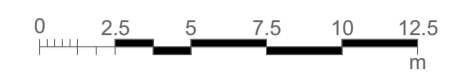
SECTION 96

scale	1:250	at	A1	status	drawing no.
drawn	DA, MT				DA115
checked	MC & TR	issue			
project no	AR-140132 CRF-1354				D



Architectus Sydney Pty Ltd and CHROFI are the owner of the copyright subsisting in these drawings, plans, designs and specifications. They must not be used, reproduced or copied, in whole or in part, nor may the information, ideas and concepts therein contained (which are confidential to Architectus Sydney Pty Ltd and CHROFI) and be disclosed to any person without the prior written consent of that company.

NOT FOR CONSTRUCTION



Do not scale drawings. Verify all dimensions on site

issue	amendment	date
A	DEVELOPMENT APPLICATION	01.08.2014
B	PRE DA MEETING_S96	15.05.2015
C	S96 APPLICATION	15.07.2015
D	S96 APPLICATION	14.10.2016

FINISHES LEGEND

- C1 Sandstone (medium)
- C2 Cladding
- C3 Sandstone (light)
- WF Window Frame Dark Bronze
- S1 Operable Vertical Louvre Screens Dark Bronze
- S3 Operable Vertical Louvre Screens Dark Bronze
- S4 Vertical Screens
- S5 Vertical Battens over Glazed Wall
- S6 Vertical Louvre Screens - Warm Grey
- GL Glazing
- F1 Timber and Render Fence
- F2 Sandstone Wall
- B1 Frameless Glass Balustrade
- B2 Dark Bronze Balustrade
- WG Operable Bifold Glass Winter Garden Facade
- R1 Render

Minor adjustment to material palette



1 GA Elevation Courtyard West

GENERAL NOTES:
 - Minor adjustments to window sizing and placement
 - Minor reduction in sliding screen quantities

client



architectus + CHROFI

Architectus Sydney
 Level 18 MLC Centre
 19 Martin Place
 Sydney NSW 2000
 T (61 2) 8252 8400
 F (61 2) 8252 8600
 sydney@architectus.com.au

CHROFI
 3/1 The Corso
 Manly NSW 2095
 T (61 2) 9977 3700
 sydney@chrofi.com

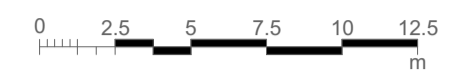
project Harbord Diggers
 80 Evans Street Freshwater

drawing Courtyard Elevations - Sheet 2

SECTION 96	scale	1:250 at A1	status	drawing no.
	drawn	DA, MT		DA116
	checked	MC & TR	issue	
	project no	AR-140132 CRF-1354		D

Architectus Sydney Pty Ltd and CHROFI are the owner of the copyright subsisting in these drawings, plans, designs and specifications. They must not be used, reproduced or copied, in whole or in part, nor may the information, ideas and concepts therein contained (which are confidential to Architectus Sydney Pty Ltd and CHROFI) and be disclosed to any person without the prior written consent of that company.

NOT FOR CONSTRUCTION



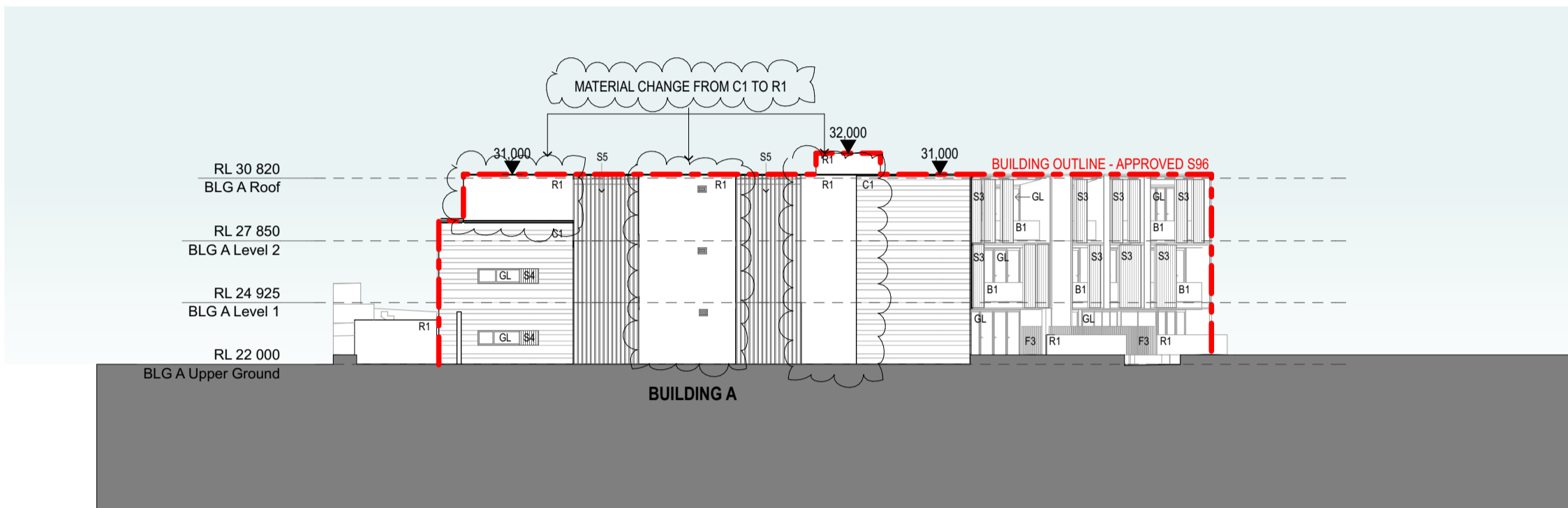
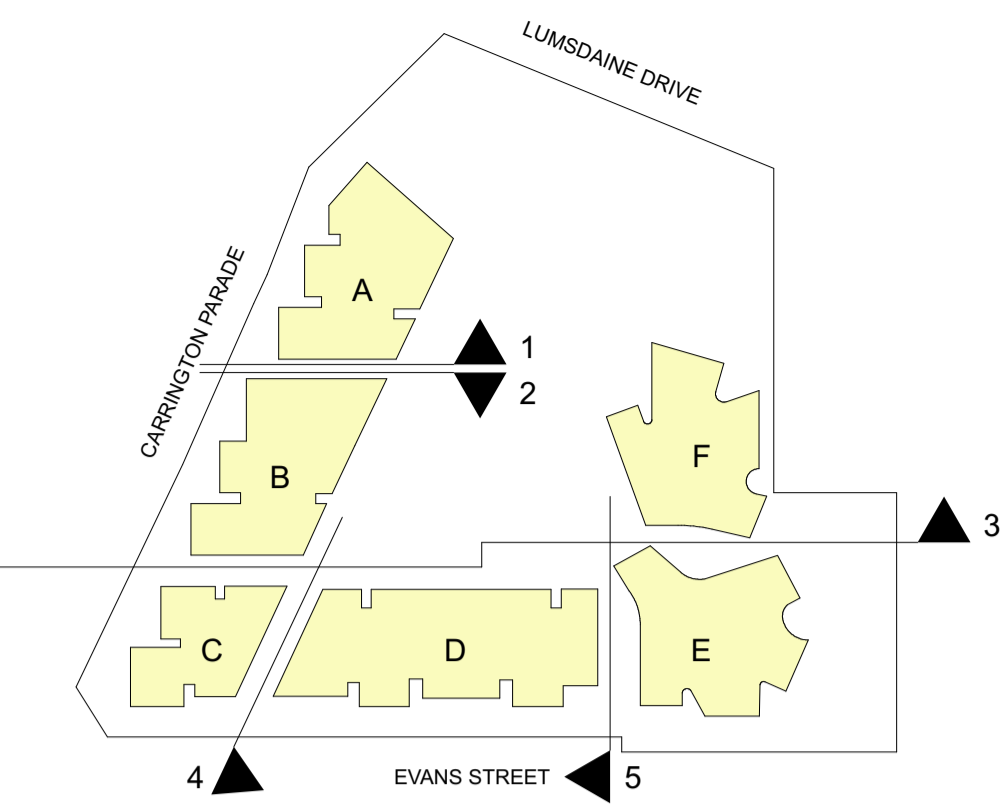
Do not scale drawings. Verify all dimensions on site

issue	amendment	date
A	DEVELOPMENT APPLICATION	01.08.2014
B	PRE DA MEETING_S96	15.05.2015
C	S96 APPLICATION	15.07.2015
D	S96 APPLICATION	14.10.2016

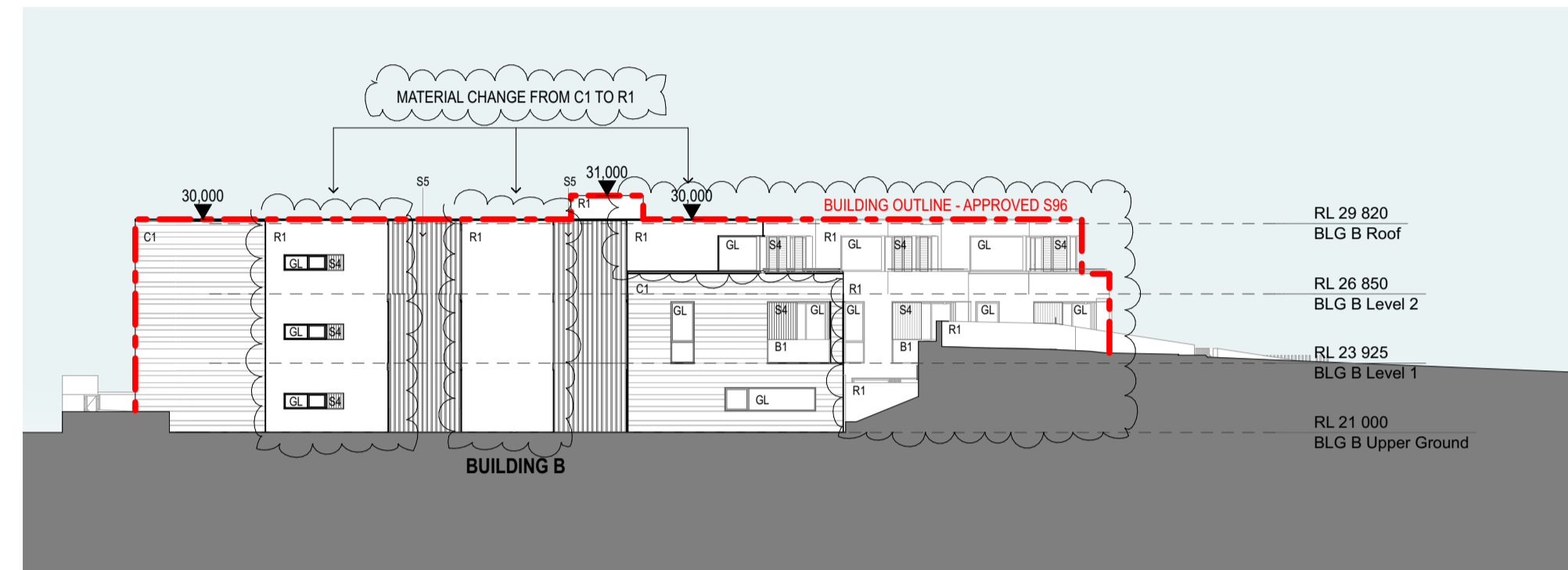
FINISHES LEGEND

- C1 Sandstone (medium)
- C2 Cladding
- C3 Sandstone (light)
- WF Window Frame Dark Bronze
- S1 Operable Vertical Louvre Screens Dark Bronze
- S3 Operable Vertical Louvre Screens Dark Bronze
- S4 Vertical Screens
- S5 Vertical Battens over Glazed Wall
- S6 Vertical Louvre Screens - Warm Grey
- GL Glazing
- F1 Timber and Render Fence
- F2 Sandstone Wall
- B1 Frameless Glass Balustrade
- B2 Dark Bronze Balustrade
- WG Operable Bifold Glass Winter Garden Facade
- R1 Render

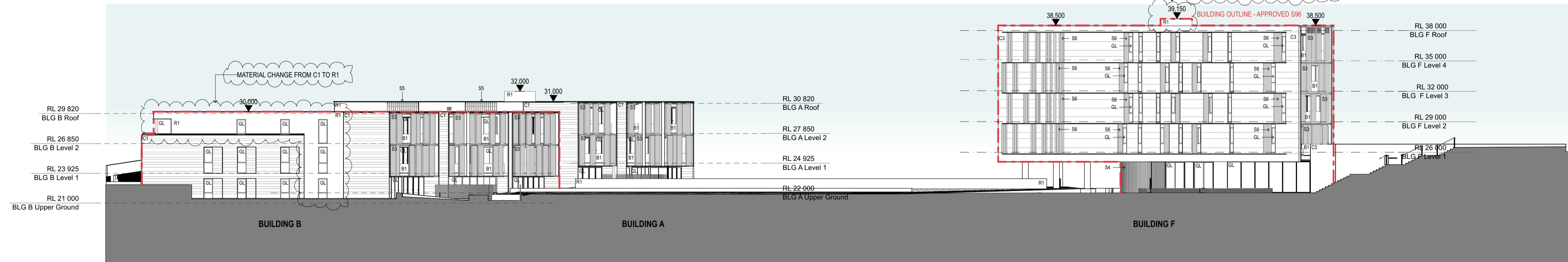
Minor adjustment to material palette



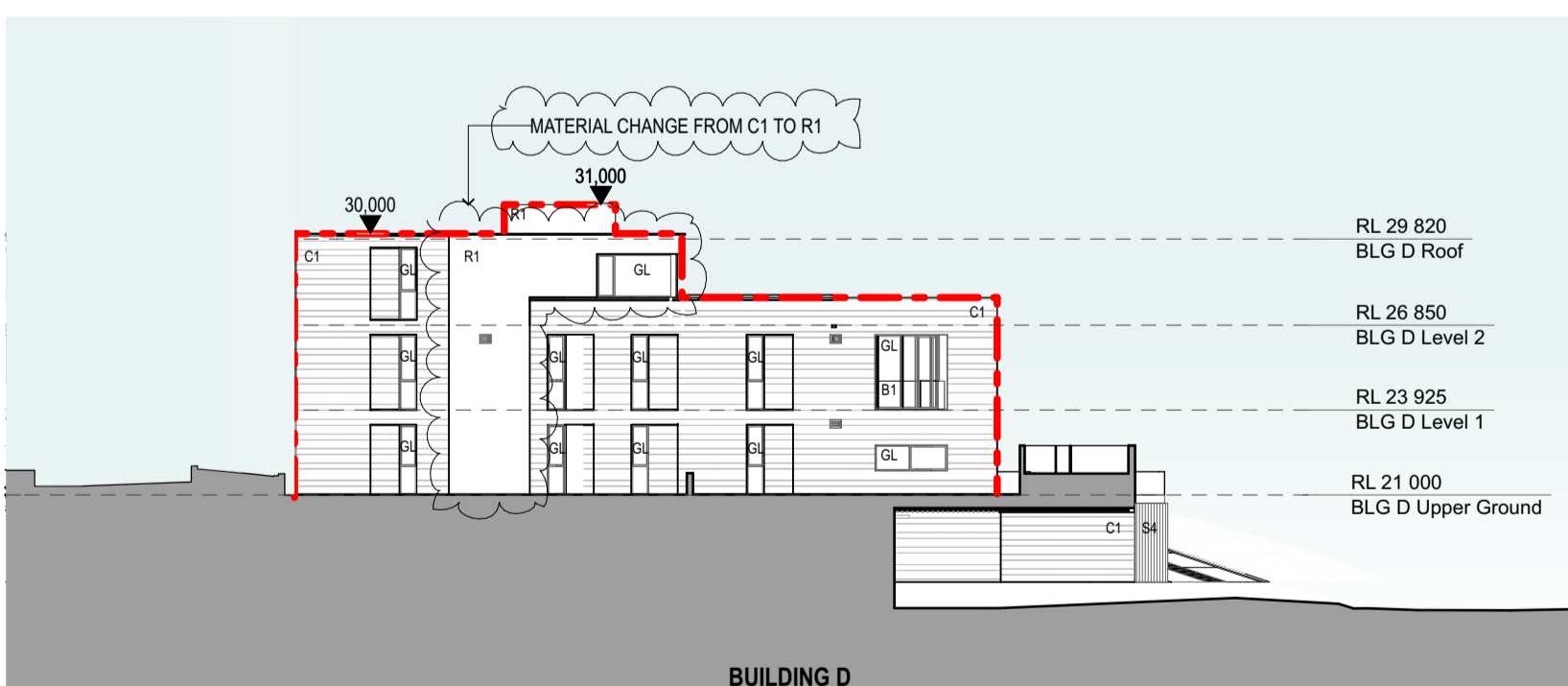
1 GA Elevation - Building A South



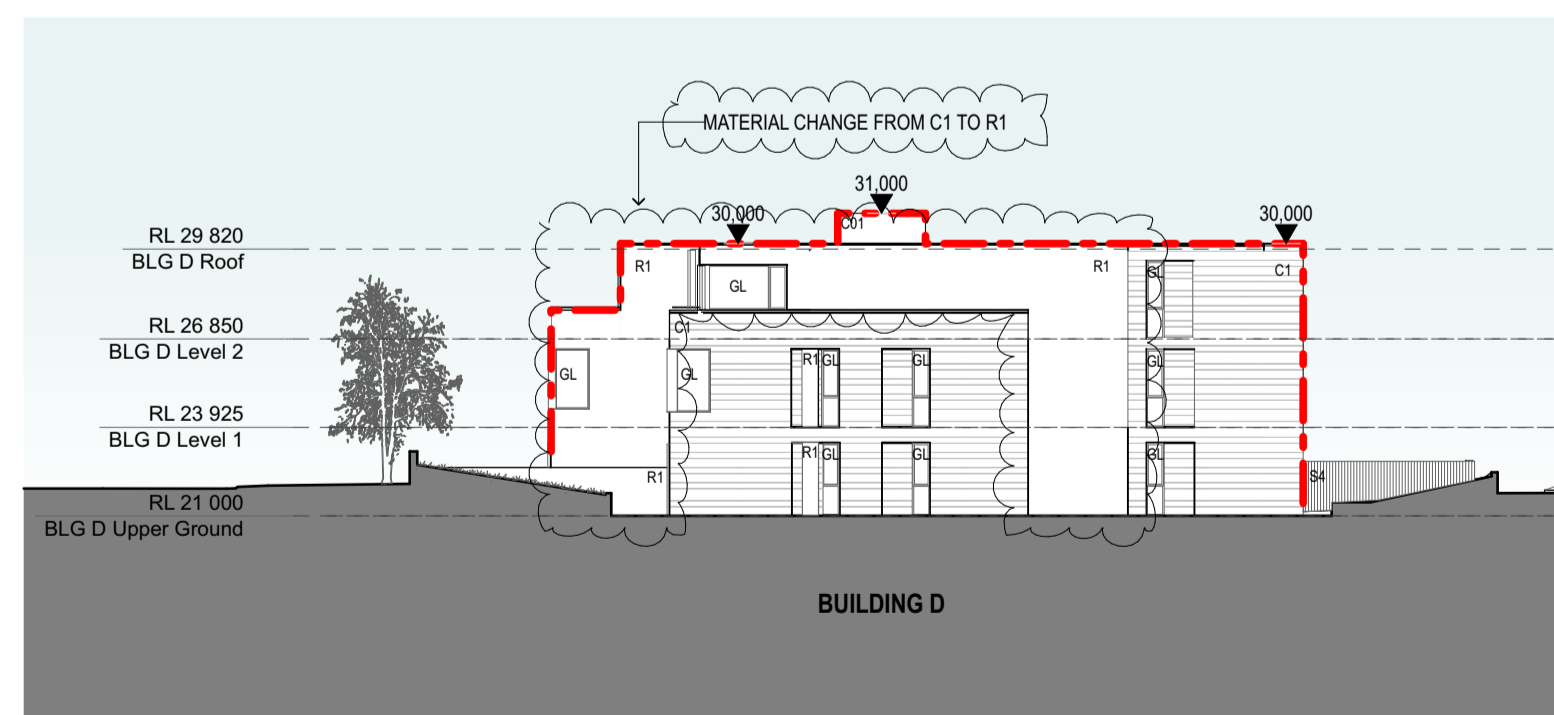
2 GA Elevation - Building B North



3 GA Elevation - Building B South



4 GA Elevation - Building D West



5 GA Elevation - Building D East

GENERAL NOTES:
 - Minor adjustments to window sizing and placement
 - Minor reduction in sliding screen quantities

client



architectus + CHROFI

Architectus Sydney
 Level 18 MLC Centre
 19 Martin Place
 Sydney NSW 2000
 T (61 2) 8252 8400
 F (61 2) 8252 8600
 sydney@architectus.com.au

CHROFI
 3/1 The Corso
 Manly NSW 2095
 T (61 2) 9977 3700
 sydney@chrofi.com

project

Harbord Diggers
 80 Evans Street Freshwater

drawing

Courtyard Elevations - Sheet 3

SECTION 96

scale	1:1, 1:250	status	drawing no.
	at A1		DA117
drawn	DA, MT	checked	MC & TR
project no	AR-140132 CRF-1354	issue	D

Architectus Sydney Pty Ltd and CHROFI are the owner of the copyright subsisting in these drawings, plans, designs and specifications. They must not be used, reproduced or copied, in whole or in part, nor may the information, ideas and concepts therein contained (which are confidential to Architectus Sydney Pty Ltd and CHROFI) and be disclosed to any person without the prior written consent of that company.



Do not scale drawings. Verify all dimensions on site

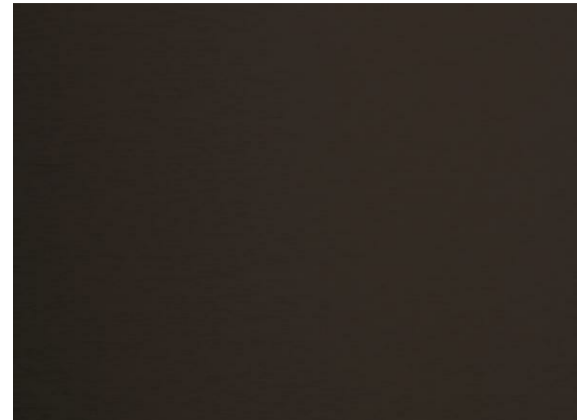
issue	amendment	date
A	DEVELOPMENT APPLICATION	01.08.2014
B	S96 APPLICATION	15.07.2015
C	S96 APPLICATION	14.10.2016



C1-Sandstone - Medium



C2-Cladding



WF-Window Frame Dark Bronze



S1-Operable Vertical Louvre Screen Dark Bronze



S3-Operable Vertical Louvre Screens Dark Bronze



S4- Vertical Screen



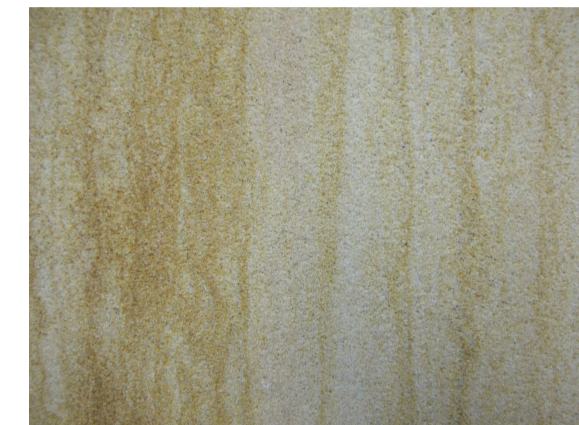
S5-Vertical Battens over Glazed Wall



GL- Glazing



F1-Timber Fence



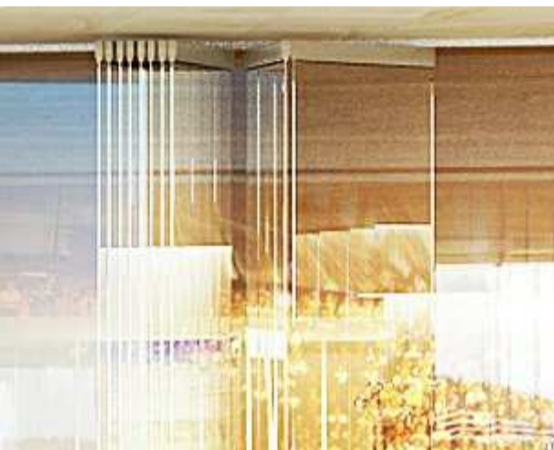
F2-Sandstone Wall



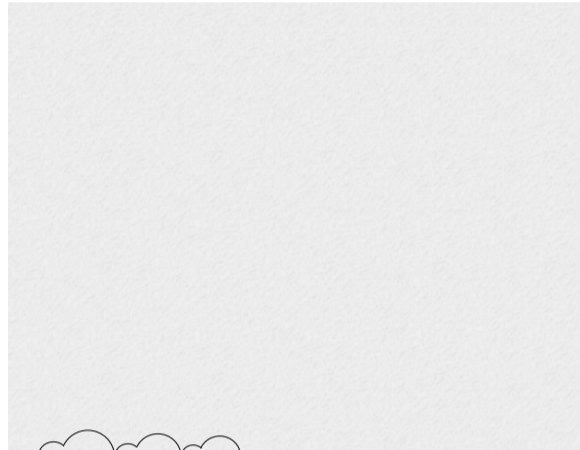
B1-Frameless Glass Balustrade



B2- Dark Bronze Balustrade



WG-Operable Bifold Glass Winter Garden Facade



R1 - Render



C3 - Sandstone - Light



S6 - Vertical Louver Screen Light Grey

Updated sandstone colour selection

Updated fence description

Introduction of render

Introduction of additional sandstone colour

Introduction of additional screen colour

FINISHES LEGEND

- C1 Sandstone (medium)
- C2 Cladding
- C3 Sandstone (light)
- WF Window Frame Dark Bronze
- S1 Operable Vertical Louvre Screen Dark Bronze
- S3 Operable Vertical Louvre Screen Dark Bronze
- S4 Vertical Screen
- S5 Vertical Battens over Glazed Wall
- S6 Vertical Louver Screen - Light Grey
- GL Glazing
- F1 Timber Fence
- F2 Sandstone Wall
- B1 Frameless Glass Balustrade
- B2 Dark Bronze Balustrade
- WG Operable Bifold Glass Winter Garden Facade
- R1 Render

Updated sandstone colour selection

Introduction of additional sandstone colour

Introduction of additional screen colour

Introduction of render

client



architectus™ + CHROFI

Architectus Sydney
Level 3, 341 George Street
Sydney NSW 2000
T (61 2) 8252 8400
F (61 2) 8252 8600
sydney@architectus.com.au

CHROFI
3/1 The Corso
Manly NSW 2095
T (61 2) 9977 3700
sydney@chrofi.com

project

Harbord Diggers
80 Evans Street Freshwater

drawing

Materials Board

scale NTS at A1 status drawing no.

drawn NR DA150

checked JH, TR issue

project no 140132 C