

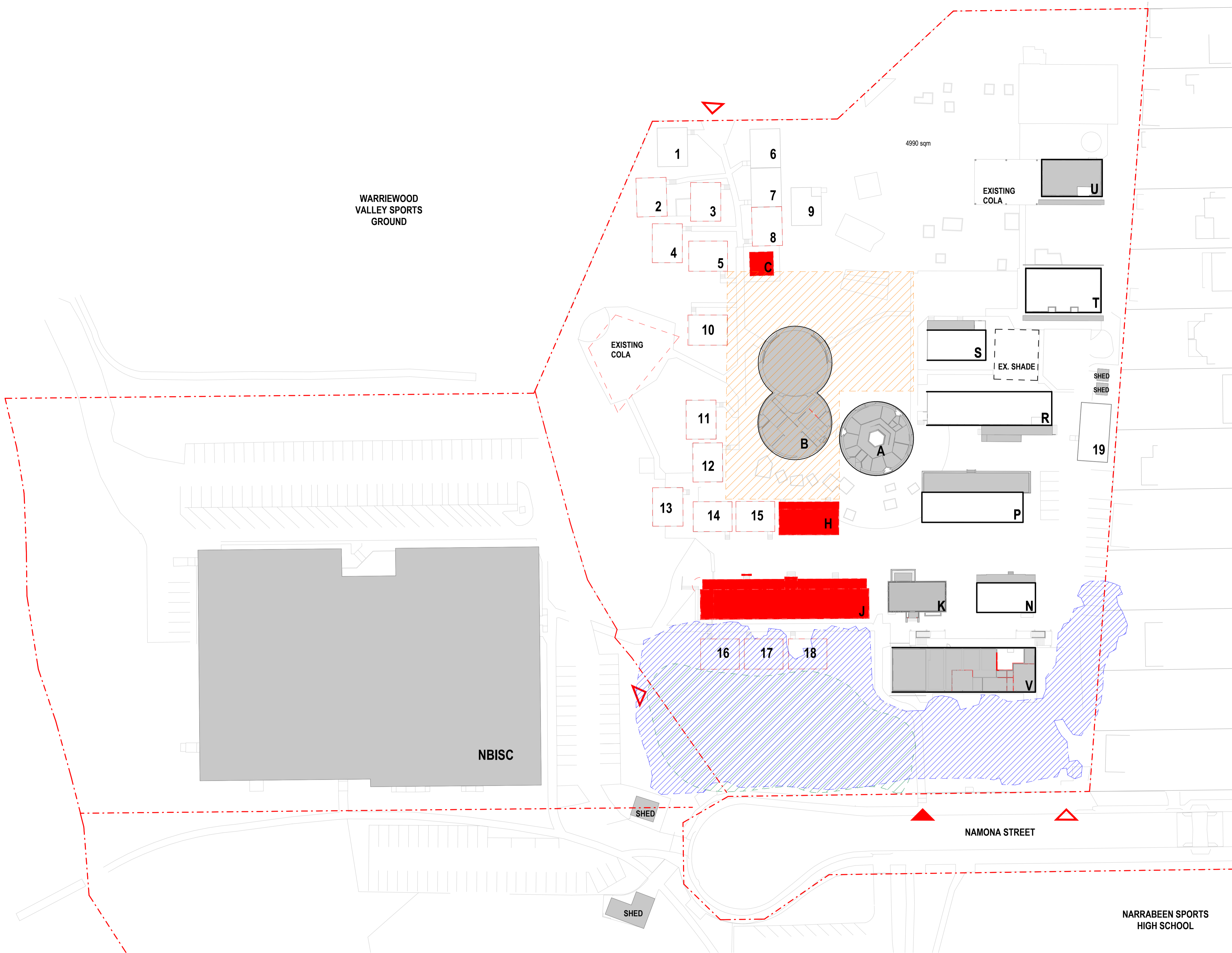
ARCHITECTURE:

0000	GENERAL & SITE INFORMATION
1000	GENERAL ARRANGEMENT PLANS
2000	GA RCPS
3000	GA SECTIONS & ELEVATIONS
4000	REFERENCE PLANS
5000	STRUCTURAL SET-OUT
6000	VERTICAL CIRCULATION
7000	INTERIOR DESIGN DETAILS
8000	EXTERIOR & FAÇADE DETAILS
9000	DRAWN SCHEDULES
9000	SCHEDULES & SPECIFICATIONS

DISCLAIMER.
 This document may not be secure, may be corrupted in transmission or due to software incompatibility and/or may be amended or altered by third parties after leaving DesignInc Sydney Pty Ltd's possession. DesignInc is not responsible for and accepts no liability for such matters.
 Subject only to any conflicting provision within any prior binding agreement by DesignInc Sydney Pty Ltd (such agreement may also contain additional conditions relating to this document and its use):

- The content of this document is confidential and copyright in it belongs to DesignInc Sydney Pty Ltd. The content is permitted only to be opened, read and used by the addressee.
- Users of this document must carry out all relevant investigations and must examine, take advice as required and satisfy themselves concerning the content, correctness and sufficiency of the attachment and its contents for their purposes.
- To the extent permitted by law, all conditions and warranties concerning this document or any use to which they may be put (whether as to quality, outcome, fitness, care, skill or otherwise) whether express or implied by statute, common law, equity, trade, custom or usage or otherwise, are expressly excluded.
- Any person using or relying on document releases & indemnifies and will keep indemnified, DesignInc Sydney Pty Ltd against all claims, liabilities, loss, costs and expenses arising directly or indirectly out of or in connection with such use or reliance including without limitation, any misrepresentation, error or defect in this document.
- Contractors to use Architectural drawings for set out. Contractors to check and verify all dimensions on site prior to construction / fabrication. Figured dimensions take precedence over scaled dimensions.
- Any discrepancies should be immediately referred to the Architect. All work to comply with N.C.C. statutory authorities and relevant Australian Standards.
- Refer also to the Model Disclaimer on the Cover Sheet.

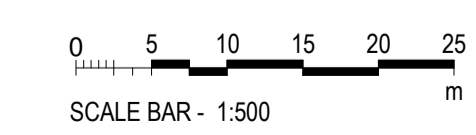
No	DATE	REVISIONS	BY
1	26/05/2022	SCHEMATIC DESIGN - DRAFT	JO
2	08/06/2022	PRE-DA - DRAFT	JO
3	24/06/2022	Pre-DA DRAFT - Updated	JO
4	29/06/2022	Pre-DA DRAFT - For Review	JO
5	15/07/2022	FOR INFORMATION	JO
6	18/07/2022	FOR INFORMATION	RF



1 NNPS - DEMOLITION SITE PLAN
 SCALE 1 : 500

LEGEND

	MAIN ENTRY		PERMANENT BUILDING / STRUCTURE
	SECONDARY ENTRY		DEMOUNTABLES
	PROJECT SITE EXTENTS		DEMOLISHED BUILDING / STRUCTURE
	BIODIVERSITY ZONE		RELOCATED DEMOUNTABLES
	COASTAL WETLAND		
	HERITAGE CURTILAGE		
	DEMOLISHED		



NOT FOR CONSTRUCTION

ARCHITECT
DesignInc
 Designinc Sydney Pty Ltd
 Level 14, 85 Castlereagh Street
 Sydney NSW 2000 Australia
 +61 2 8905 7100
 sydney@designinc.com.au

Nominated Architects
 Ian Armstrong 7260 | Cathryn Drew-Bredin 7269 | Richard Does 8126 | Mary Anne McGirr 10946



PROJECT
NARRABEEN EDUCATION PRECINCT
 NAMONA ST, NORTH NARRABEEN NSW 2101

DETAILS			
DRAWN	JA	SCALE	
CHECKED	JO		
APPROVED	Approver	1 : 500 @ A1	

TITLE
DEMOLITION SITE PLAN

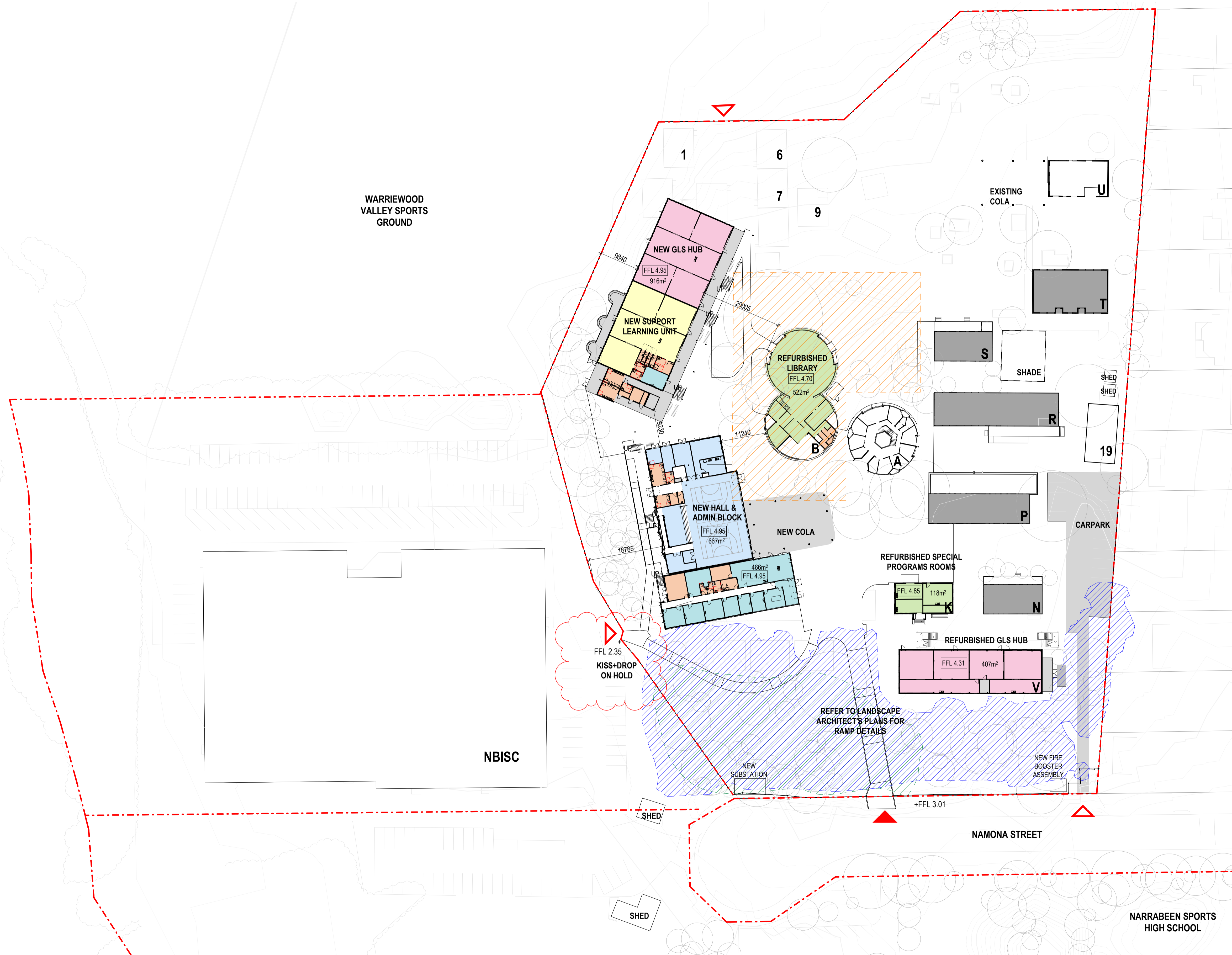
DRAWING NUMBER	REVISION
AR-P-0511	6

ARCHITECTURE:
 0000 GENERAL & SITE INFORMATION
 1000 GENERAL ARRANGEMENT PLANS
 2000 GA RCPS
 3000 GA SECTIONS & ELEVATIONS
 4000 REFERENCE PLANS
 5000 STRUCTURAL SET-OUT
 6000 VERTICAL CIRCULATION
 7000 INTERIOR DESIGN DETAILS
 8000 EXTERIOR & FAÇADE DETAILS
 9000 DRAWN SCHEDULES
 9000 SCHEDULES & SPECIFICATIONS

DISCLAIMER.
 This document may not be secure, may be corrupted in transmission or due to software incompatibility and/or may be amended or altered by third parties after leaving DesignInc Sydney Pty Ltd's possession. DesignInc is not responsible for and accepts no liability for such matters.
 Subject only to any conflicting provision within any prior binding agreement by DesignInc Sydney Pty Ltd (such agreement may also contain additional conditions relating to this document and its use):

- The content of this document is confidential and copyright in it belongs to DesignInc Sydney Pty Ltd. The content is permitted only to be opened, read and used by the addressee.
- Users of this document must carry out all relevant investigations and must examine, take advice as required and satisfy themselves concerning the content, correctness and sufficiency of the attachment and its contents for their purposes.
- To the extent permitted by law, all conditions and warranties concerning this document or any use to which they may be put (whether as to quality, outcome, fitness, care, skill or otherwise) whether express or implied by statute, common law, equity, trade, custom or usage or otherwise, are expressly excluded.
- Any person using or relying on document releases & indemnifies and will keep indemnified DesignInc Sydney Pty Ltd against all claims, liabilities, loss, costs and expenses arising directly or indirectly out of or in connection with such use or reliance including without limitation, any misrepresentation, error or defect in this document.
- Contractors to use Architectural drawings for set out. Contractors to check and verify all dimensions on site prior to construction / fabrication. Figured dimensions take precedence over scaled dimensions.
- Any discrepancies should be immediately referred to the Architect. All work to comply with N.C.C. statutory authorities and relevant Australian Standards.
- Refer also to the Model Disclaimer on the Cover Sheet.

No	DATE	REVISIONS	BY
1	11/05/2022	CONCEPT DESIGN	RF
2	26/05/2022	SCHEMATIC DESIGN - DRAFT	JO
3	08/06/2022	PRE-DA - DRAFT	JO
4	24/06/2022	Pre-DA DRAFT - Updated	JO
5	29/06/2022	Pre-DA DRAFT - For Review	JO
6	12/07/2022	FOR INFORMATION	RF
7	15/07/2022	FOR INFORMATION	JO
8	18/07/2022	FOR INFORMATION	RF



1 NNPS - NEW SITE PLAN - GROUND FLOOR_JO
 AR-P-0521 SCALE 1:500

LEGEND

GENERAL LEARNING SPACE HUB	MAIN ENTRY	PROJECT SITE EXTENTS
SUPPORT LEARNING HUB	SECONDARY ENTRY	BIODIVERSITY ZONE
HALL, CANTEEN, & OSHC HUB	PERMANENT BUILDING / STRUCTURE	DEMOLISHED
LIBRARY HUB	DEMOUNTABLES	HERITAGE CURTLAGE
AMENITIES & SERVICES		COASTAL WETLANDS
ADMIN STAFF HUB		
CIRCULATION		
EXISTING BUILDINGS		

0 5 10 15 20 25
 SCALE BAR - 1:500 m

NOT FOR CONSTRUCTION

ARCHITECT
DesignInc
 Designinc Sydney Pty Ltd
 Level 14, 85 Castlereagh Street
 Sydney NSW 2000 Australia
 +61 2 8905 7100
 sydney@designinc.com.au

Nominated Architects
 Ian Armstrong 7260 | Cathryn Drew-Bredin 7269 | Richard Does 8126 | Mary Anne McGirr 10946



PROJECT
NARRABEEN EDUCATION PRECINCT
 NAMONA ST, NORTH NARRABEEN NSW 2101

DETAILS		
DRAWN	JO	SCALE
CHECKED	RF	
APPROVED	Approver	1:500 @ A1

TITLE
NEW SITE PLAN - SCHOOL - GROUND FLOOR

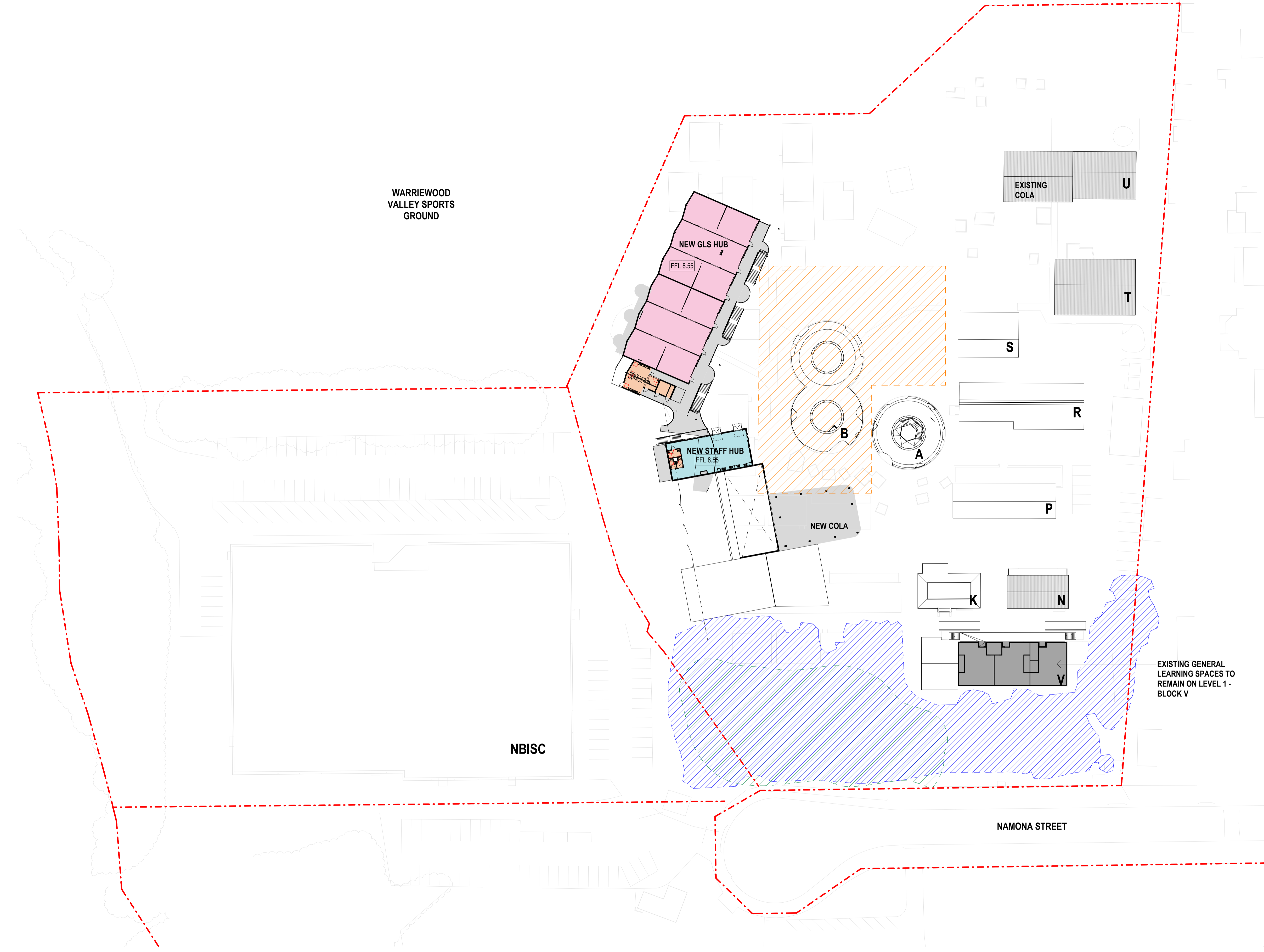
DRAWING NUMBER	REVISION
AR-P-0521	8

ARCHITECTURE:
 0000 GENERAL & SITE INFORMATION
 1000 GENERAL ARRANGEMENT PLANS
 2000 GA RCPS
 3000 GA SECTIONS & ELEVATIONS
 4000 REFERENCE PLANS
 5000 STRUCTURAL SET-OUT
 6000 VERTICAL CIRCULATION
 7000 INTERIOR DESIGN DETAILS
 8000 EXTERIOR & FACADE DETAILS
 9000 DRAWN SCHEDULES
 9000 SCHEDULES & SPECIFICATIONS

DISCLAIMER.
 This document may not be secure, may be corrupted in transmission or due to software incompatibility and/or may be amended or altered by third parties after leaving DesignInc Sydney Pty Ltd's possession. DesignInc is not responsible for and accepts no liability for such matters.
 Subject only to any conflicting provision within any prior binding agreement by DesignInc Sydney Pty Ltd (such agreement may also contain additional conditions relating to this document and its use):

- The content of this document is confidential and copyright in it belongs to DesignInc Sydney Pty Ltd. The content is permitted only to be opened, read and used by the addressee.
- Users of this document must carry out all relevant investigations and must examine, take advice as required and satisfy themselves concerning the content, correctness and sufficiency of the attachment and its contents for their purposes.
- To the extent permitted by law, all conditions and warranties concerning this document or any use to which they may be put (whether as to quality, outcome, fitness, care, skill or otherwise) whether express or implied by statute, common law, equity, trade, custom or usage or otherwise, are expressly excluded.
- Any person using or relying on document releases & indemnifies and will keep indemnified, DesignInc Sydney Pty Ltd against all claims, liabilities, loss, costs and expenses arising directly or indirectly out of or in connection with such use or reliance including without limitation, any misrepresentation, error or defect in this document.
- Contractors to use Architectural drawings for set out. Contractors to check and verify all dimensions on site prior to construction / fabrication. Figured dimensions take precedence over scaled dimensions.
- Any discrepancies should be immediately referred to the Architect. All work to comply with N.C.C. statutory authorities and relevant Australian Standards.
- Refer also to the Model Disclaimer on the Cover Sheet.

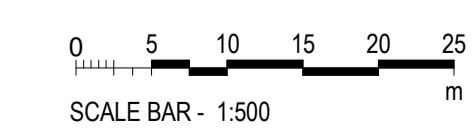
No	DATE	REVISIONS	BY
1	11/05/2022	CONCEPT DESIGN	RF
2	26/05/2022	SCHEMATIC DESIGN - DRAFT	JO
3	08/06/2022	PRE-DA - DRAFT	JO
4	24/06/2022	Pre-DA DRAFT - Updated	JO
5	15/07/2022	FOR INFORMATION	JO
6	18/07/2022	FOR INFORMATION	RF



1 NNPS - NEW SITE PLAN - LEVEL 1
 AR-P-0522 SCALE 1:500

LEGEND

GENERAL LEARNING SPACE HUB	MAIN ENTRY	PROJECT SITE EXTENTS
SUPPORT LEARNING HUB	SECONDARY ENTRY	BIODIVERSITY ZONE
HALL, CANTEEN, & OSHC HUB	PERMANENT BUILDING / STRUCTURE	DEMOLISHED
LIBRARY HUB	DEMOUNTABLES	HERITAGE CURTILAGE
AMENITIES & SERVICES		COASTAL WETLANDS
ADMIN STAFF HUB		
CIRCULATION		
EXISTING BUILDINGS		



NOT FOR CONSTRUCTION

ARCHITECT
DesignInc
 DesignInc Sydney Pty Ltd
 Level 14, 85 Castlereagh Street
 Sydney NSW 2000 Australia
 +61 2 8905 7100
 sydney@designinc.com.au

Nominated Architects
 Ian Armstrong 7260 | Cathryn Drew-Bredin 7269 | Richard Does 8126 | Mary Anne McGirr 10946



PROJECT
NARRABEEN EDUCATION PRECINCT
 NAMONA ST, NORTH NARRABEEN NSW 2101

DETAILS		
DRAWN	JO	SCALE
CHECKED	RF	
APPROVED	Approver	1:500 @ A1

TITLE
NEW SITE PLAN - SCHOOL - LEVEL 1

DRAWING NUMBER	REVISION
AR-P-0522	6