

KIOSK
K204

**LEASE PLAN - KIOSK K204
LOCATION PLAN
LEVEL 1 - ZONE 13**

THIS PLAN TO BE READ IN
CONJUNCTION WITH

DA2016/0974

NORTHERN BEACHES COUNCIL

PAPER SIZE TO PLOT: A2 (420 x 594mm)



MIGUEL GONZALEZ
Ph: +61 401 560 720
miguel@bsidecreativespace.
ABN: 68 891 783 287
B-SIDE Creative Space
104/106 Old Pittwater Rd.
Brookvale, NSW 2100

Client name: **GIRDERS - WESTFIELD WARRINGAH**

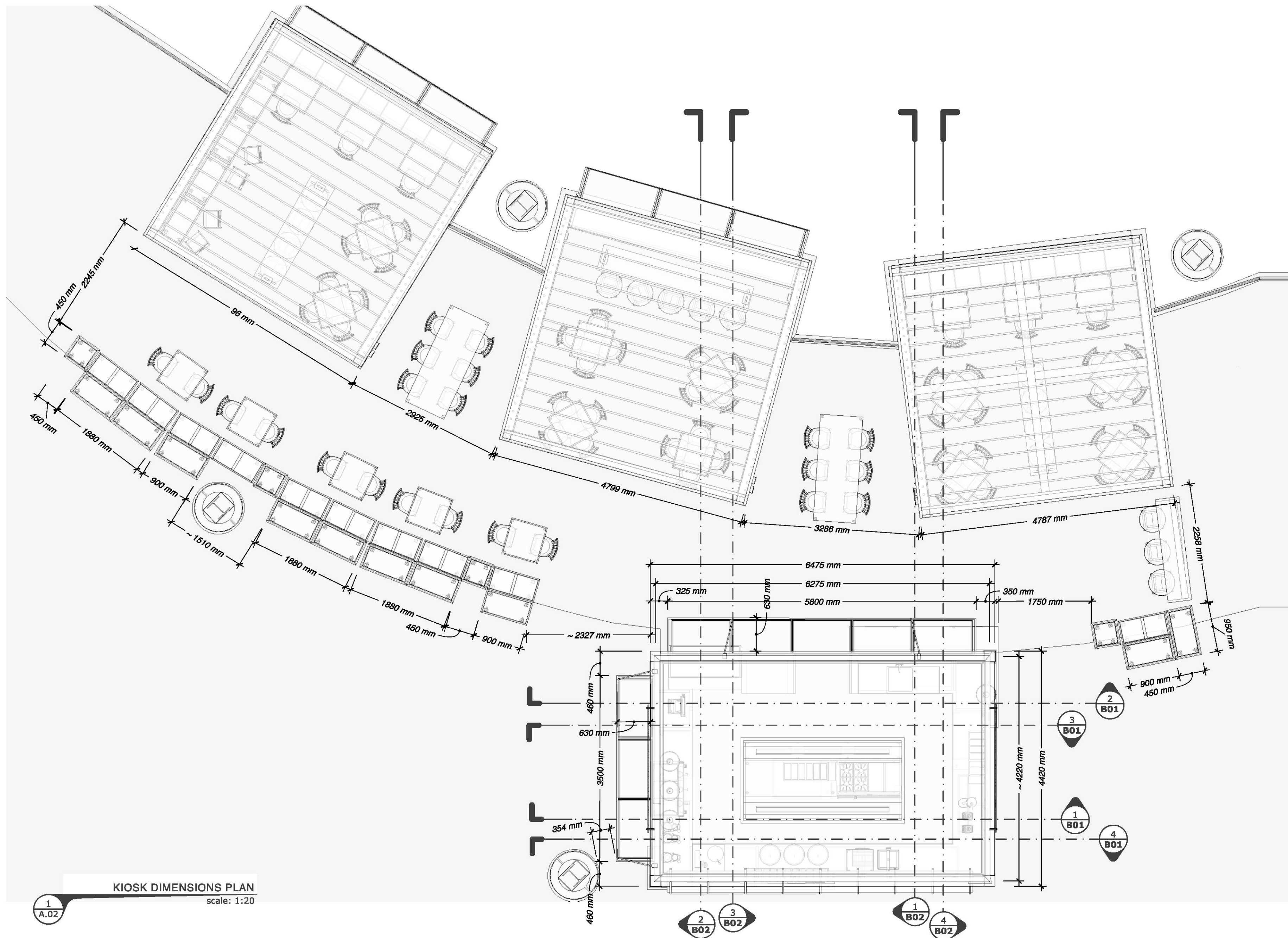
Drawing Name: **LOCATION PLAN**

Latest Revision: **31 / August / 2016**

Scale: **N/A**

Drawing N°

A.01



THIS PLAN TO BE READ IN
CONJUNCTION WITH
DA2016/0974
NORTHERN BEACHES COUNCIL

- (F#) FINISHES-REFER TO FINISHES BOARD
(E#) EQUIPMENT-REFER TO EQUIPMENT BOARD
(D#) DETAILS-REFER TO DWG.#



MIGUEL GONZALEZ
Ph: +61 401 560 720
miguel@bsidecreativespace.
ABN: 68 891 783 287
B-SIDE Creative Space
104/106 Old Pittwater Rd.
Brookvale, NSW 2100

Client name: **GIRDLERS - WESTFIELD WARRINGAH**

Drawing Name: **FLOOR LAYOUT**

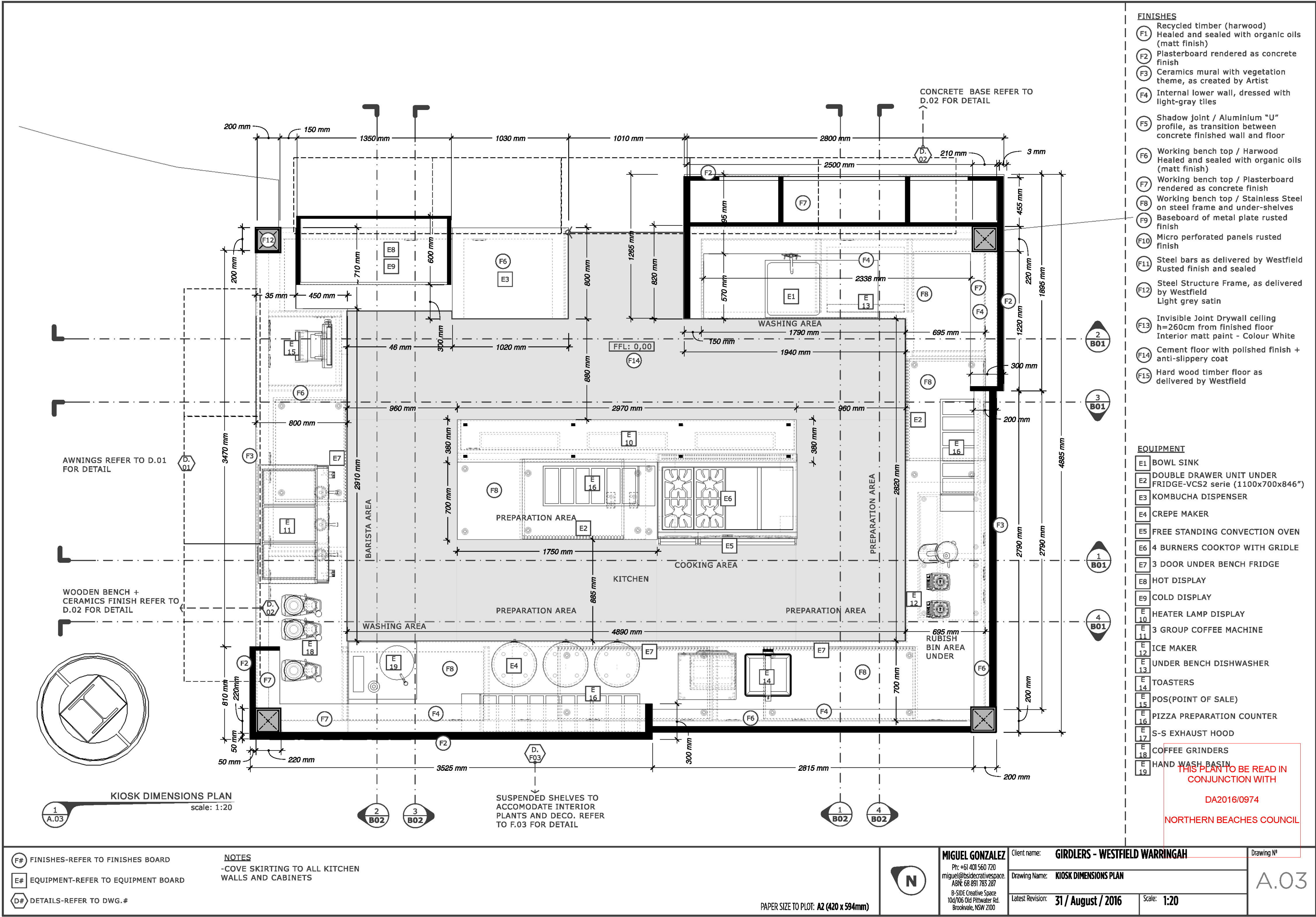
Latest Revision: **31 / August / 2016**

Scale: **1:50**

Drawing N°

A.02

PAPER SIZE TO PLOT: **A2 (420 x 594mm)**



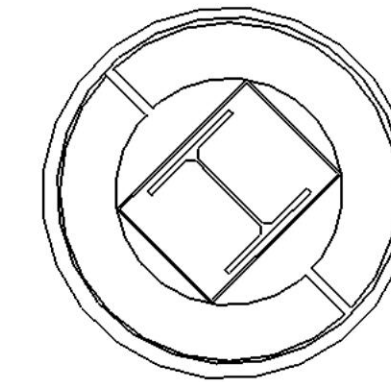
'MODULES' REFER TO F.02 FOR DETAIL

BAR TABLE REFER TO F.01 FOR DETAILS

BAR CHAIR REFER TO F.01 FOR DETAILS

SHUTTERS REFER TO D.01 FOR DETAIL

CABANAS TIMBER FRAME REFER TO B.03 FOR DETAIL



CABANA 1 DIMENSIONS PLAN
scale: 1:20

- F# FINISHES-REFER TO FINISHES BOARD
E# EQUIPMENT-REFER TO EQUIPMENT BOARD
D# DETAILS-REFER TO DWG.#

PAPER SIZE TO PLOT: A2 (420 x 594mm)



MIGUEL GONZALEZ
Ph: +61 401 560 720
miguel@bsidecreativespace.
ABN: 68 891 783 287
B-SIDE Creative Space
104/106 Old Pittwater Rd.
Brookvale, NSW 2100

Client name: **GIRDERS - WESTFIELD WARRINGAH**

Drawing Name: **CABANA 1 DIMENSIONS PLAN**

Latest Revision: **31 / August / 2016**

Scale: **1:20**

Drawing N°

A.04

FINISHES

- F1 Recycled timber (harwood)
Healed and sealed with organic oils
(matt finish)
F2 Plasterboard rendered as concrete
finish
F3 Ceramics mural with vegetation
theme, as created by Artist
F4 Internal lower wall, dressed with
light-gray tiles
F5 Shadow joint / Aluminium "U"
profile, as transition between
concrete finished wall and floor
F6 Working bench top / Harwood
Healed and sealed with organic oils
(matt finish)
F7 Working bench top / Plasterboard
rendered as concrete finish
F8 Working bench top / Stainless Steel
on steel frame and under-shelves
F9 Baseboard of metal plate rusted
finish
F10 Micro perforated panels rusted
finish
F11 Steel bars as delivered by Westfield
Rusted finish and sealed
F12 Steel Structure Frame, as delivered
by Westfield
Light grey satin
F13 Invisible Joint Drywall ceiling
h=260cm from finished floor
Interior matt paint - Colour White
F14 Cement floor with polished finish +
anti-slippery coat
F15 Hard wood timber floor as
delivered by Westfield

EQUIPMENT

- E1 BOWL SINK
E2 DOUBLE DRAWER UNIT UNDER
FRIDGE-VCS2 serie (1100x700x846")
E3 KOMBUCHA DISPENSER
E4 CREPE MAKER
E5 FREE STANDING CONVECTION OVEN
E6 4 BURNERS COOKTOP WITH GRIDLE
E7 3 DOOR UNDER BENCH FRIDGE
E8 HOT DISPLAY
E9 COLD DISPLAY
E10 HEATER LAMP DISPLAY
E11 3 GROUP COFFEE MACHINE
E12 ICE MAKER
E13 UNDER BENCH DISHWASHER
E14 TOASTERS
E15 POS(POINT OF SALE)
E16 PIZZA PREPARATION COUNTER
E17 S-S EXHAUST HOOD
E18 COFFEE GRINDERS
E19 HAND WASH BASIN

THIS PLAN TO BE READ IN
CONJUNCTION WITH

DA2016/0974

NORTHERN BEACHES COUNCIL

'MODULES' REFER TO F.02
FOR DETAIL

STOOLS REFER TO F.01 FOR
DETAILS

BAR TABLE REFER TO F.01
FOR DETAILS

BAR CHAIR REFER TO F.01
FOR DETAILS

SHUTTERS REFER TO D.01
FOR DETAIL

CABANAS TIMBER FRAME
REFER TO B.03 FOR DETAIL

SEATING AREA

FFL: 0,00

CABANA 2 DIMENSIONS PLAN
scale: 1:20

FINISHES

- F1 Recycled timber (harwood)
Healed and sealed with organic oils
(matt finish)
- F2 Plasterboard rendered as concrete
finish
- F3 Ceramics mural with vegetation
theme, as created by Artist
- F4 Internal lower wall, dressed with
light-gray tiles
- F5 Shadow joint / Aluminium "U"
profile, as transition between
concrete finished wall and floor
- F6 Working bench top / Harwood
Healed and sealed with organic oils
(matt finish)
- F7 Working bench top / Plasterboard
rendered as concrete finish
- F8 Working bench top / Stainless Steel
on steel frame and under-shelves
- F9 Baseboard of metal plate rusted
finish
- F10 Micro perforated panels rusted
finish
- F11 Steel bars as delivered by Westfield
Rusted finish and sealed
- F12 Steel Structure Frame, as delivered
by Westfield
Light grey satin
- F13 Invisible Joint Drywall ceiling
h=260cm from finished floor
Interior matt paint - Colour White
- F14 Cement floor with polished finish +
anti-slippery coat
- F15 Hard wood timber floor as
delivered by Westfield

EQUIPMENT

- E1 BOWL SINK
- E2 DOUBLE DRAWER UNIT UNDER
FRIDGE-VCS2 serie (1100x700x846")
- E3 KOMBUCHA DISPENSER
- E4 CREPE MAKER
- E5 FREE STANDING CONVECTION OVEN
- E6 4 BURNERS COOKTOP WITH GRIDLE
- E7 3 DOOR UNDER BENCH FRIDGE
- E8 HOT DISPLAY
- E9 COLD DISPLAY
- E10 HEATER LAMP DISPLAY
- E11 3 GROUP COFFEE MACHINE
- E12 ICE MAKER
- E13 UNDER BENCH DISHWASHER
- E14 TOASTERS
- E15 POS(POINT OF SALE)
- E16 PIZZA PREPARATION COUNTER
- E17 S-S EXHAUST HOOD
- E18 COFFEE GRINDERS
- E19 HAND WASH BASIN

THIS PLAN TO BE READ IN
CONJUNCTION WITH

DA2016/0974

NORTHERN BEACHES COUNCIL

F# FINISHES-REFER TO FINISHES BOARD

E# EQUIPMENT-REFER TO EQUIPMENT BOARD

D# DETAILS-REFER TO DWG.#



MIGUEL GONZALEZ
Ph: +61 401 560 720
miguel@bsidecrativespace.
ABN: 68 891 783 287
B-SIDE Creative Space
104/706 Old Pittwater Rd.
Brookvale, NSW 2100

Client name: **GIRDERS - WESTFIELD WARRINGAH**

Drawing Name: **CABANA 2 DIMENSIONS PLAN**

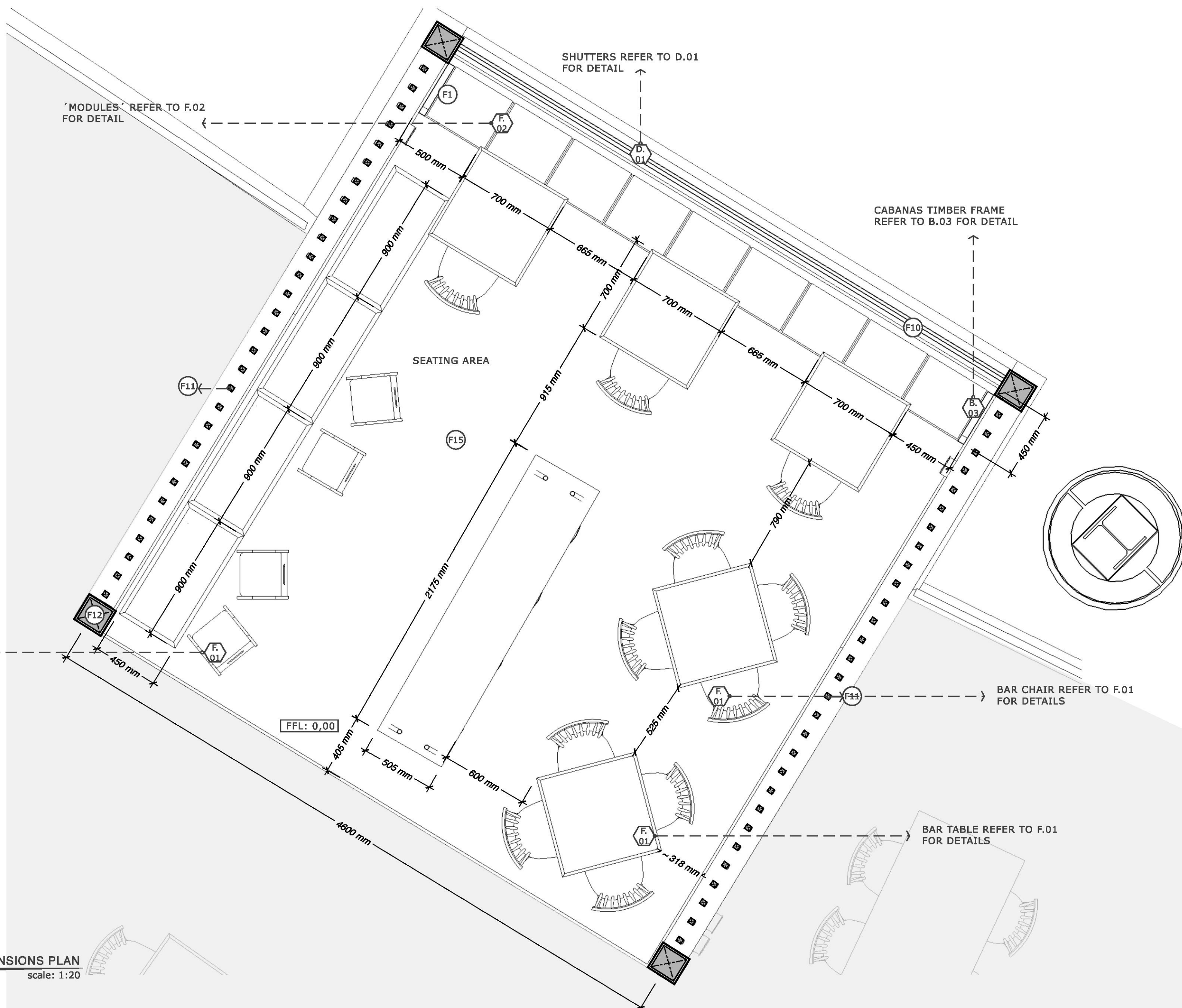
Latest Revision: **31 / August / 2016**

Scale: **1:20**

Drawing N°

A.05

PAPER SIZE TO PLOT: A2 (420 x 594mm)



- FINISHES**
- (F1) Recycled timber (harwood)
Healed and sealed with organic oils
(matt finish)
 - (F2) Plasterboard rendered as concrete
finish
 - (F3) Ceramics mural with vegetation
theme, as created by Artist
 - (F4) Internal lower wall, dressed with
light-gray tiles
 - (F5) Shadow joint / Aluminium "U"
profile, as transition between
concrete finished wall and floor
 - (F6) Working bench top / Harwood
Healed and sealed with organic oils
(matt finish)
 - (F7) Working bench top / Plasterboard
rendered as concrete finish
 - (F8) Working bench top / Stainless Steel
on steel frame and under-shelves
 - (F9) Baseboard of metal plate rusted
finish
 - (F10) Micro perforated panels rusted
finish
 - (F11) Steel bars as delivered by Westfield
Rusted finish and sealed
 - (F12) Steel Structure Frame, as delivered
by Westfield
Light grey satin
 - (F13) Invisible Joint Drywall ceiling
h=260cm from finished floor
Interior matt paint - Colour White
 - (F14) Cement floor with polished finish +
anti-slippery coat
 - (F15) Hard wood timber floor as
delivered by Westfield

- EQUIPMENT**
- (E1) BOWL SINK
 - (E2) DOUBLE DRAWER UNIT UNDER
FRIDGE-VCS2 serie (1100x700x846")
 - (E3) KOMBUCHA DISPENSER
 - (E4) CREPE MAKER
 - (E5) FREE STANDING CONVECTION OVEN
 - (E6) 4 BURNERS COOKTOP WITH GRIDLE
 - (E7) 3 DOOR UNDER BENCH FRIDGE
 - (E8) HOT DISPLAY
 - (E9) COLD DISPLAY
 - (E10) HEATER LAMP DISPLAY
 - (E11) 3 GROUP COFFEE MACHINE
 - (E12) ICE MAKER
 - (E13) UNDER BENCH DISHWASHER
 - (E14) TOASTERS
 - (E15) POS(POINT OF SALE)
 - (E16) PIZZA PREPARATION COUNTER
 - (E17) S-S EXHAUST HOOD
 - (E18) COFFEE GRINDERS
 - (E19) HAND WASH BASIN
- THIS PLAN TO BE READ IN
CONJUNCTION WITH**
- DA2016/0974**
- NORTHERN BEACHES COUNCIL**

CABANA 3 DIMENSIONS PLAN
scale: 1:20

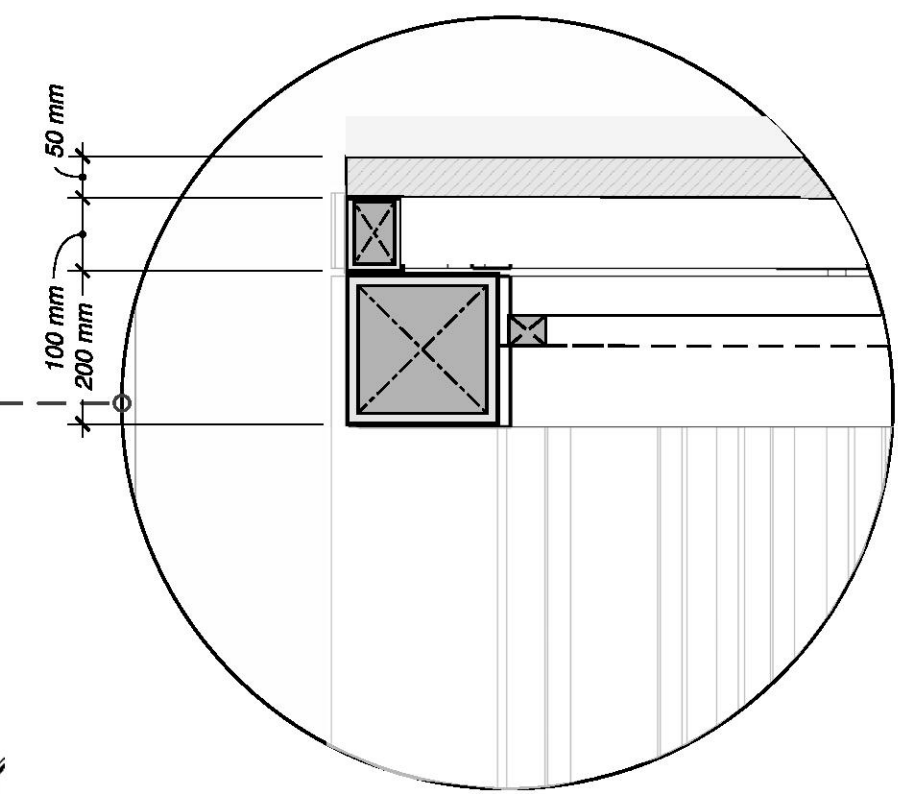
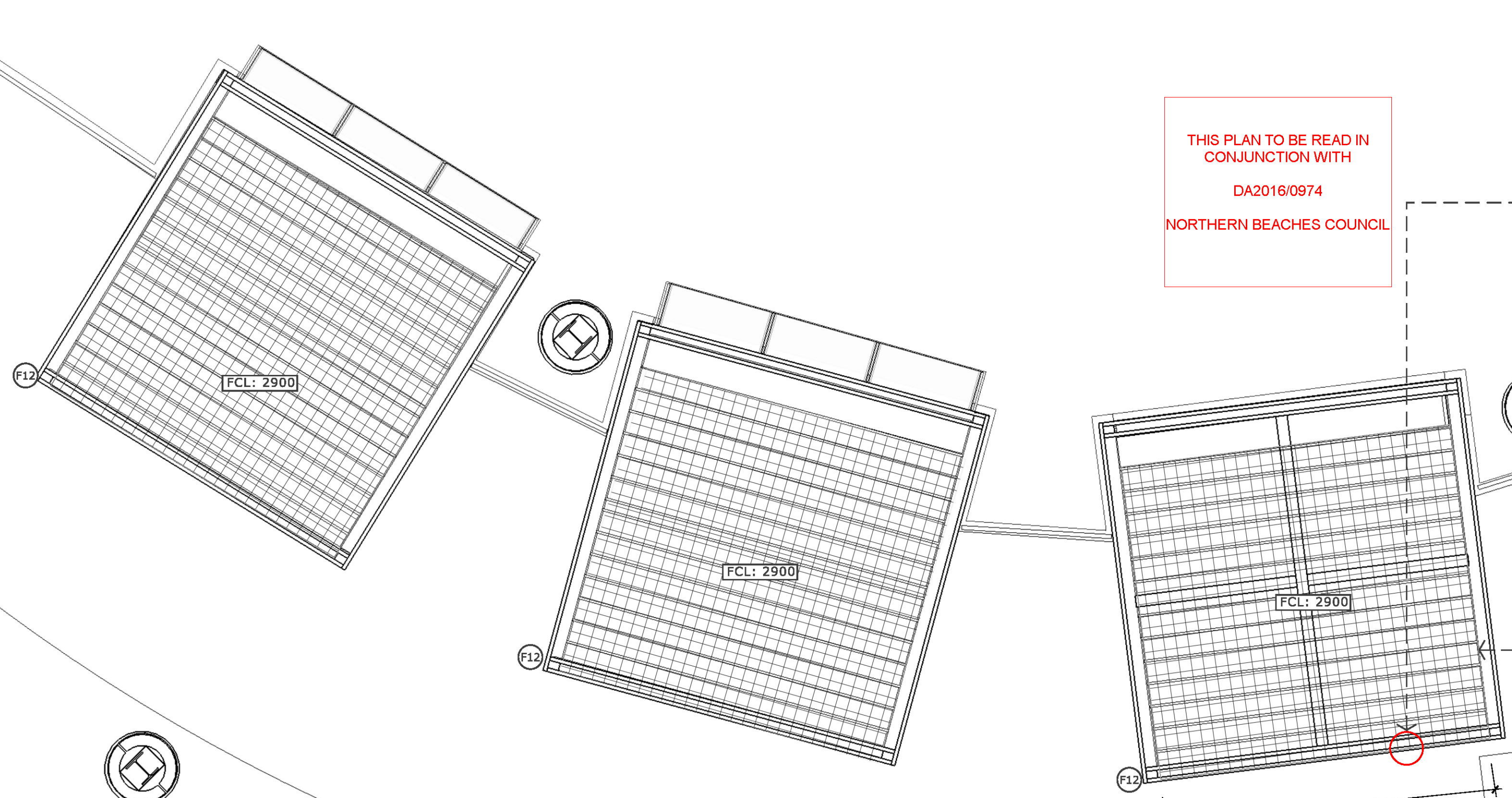
- (F#) FINISHES-REFER TO FINISHES BOARD
- (E#) EQUIPMENT-REFER TO EQUIPMENT BOARD
- (D#) DETAILS-REFER TO DWG.#

PAPER SIZE TO PLOT: A2 (420 x 594mm)

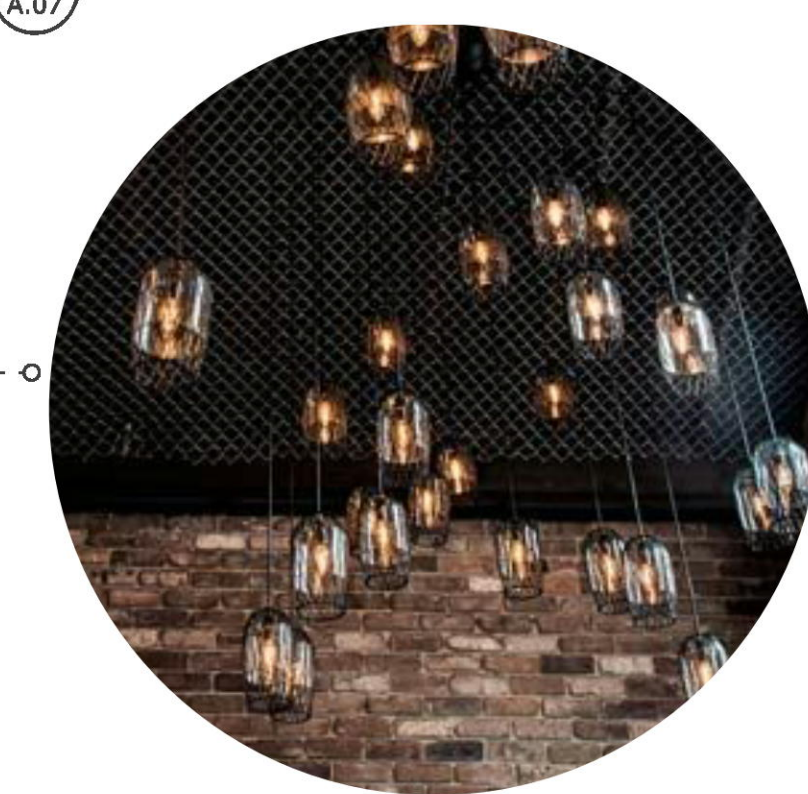


MIGUEL GONZALEZ
Ph: +61 401 560 720
miguel@bsidecreativespace.
ABN: 68 891 783 287
B-SIDE Creative Space
104/106 Old Pittwater Rd.
Brookvale, NSW 2100

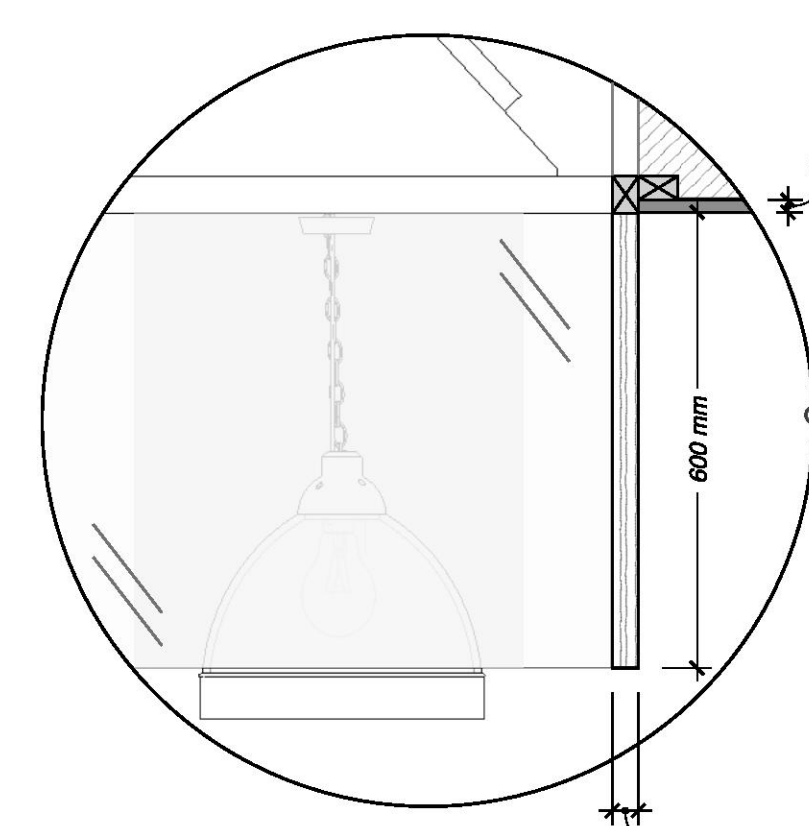
Client name:	GIRDERS - WESTFIELD WARRINGAH		Drawing N°
Drawing Name:	CABANA 3 DIMENSIONS PLAN		A.06
Latest Revision:	31 / August / 2016	Scale:	



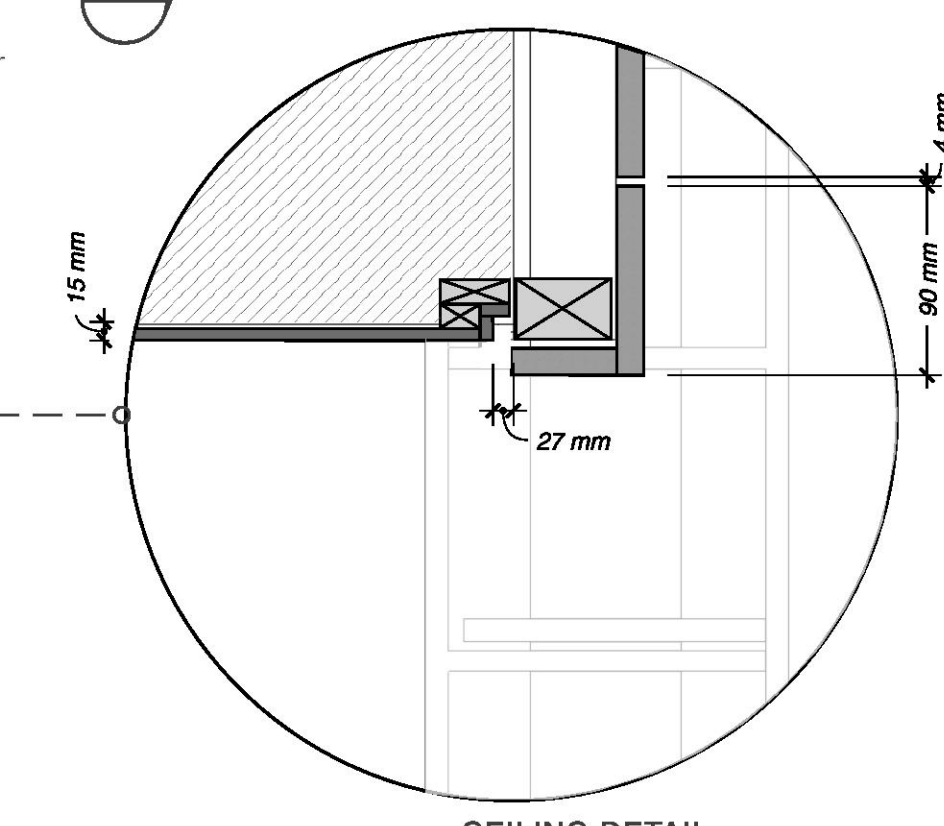
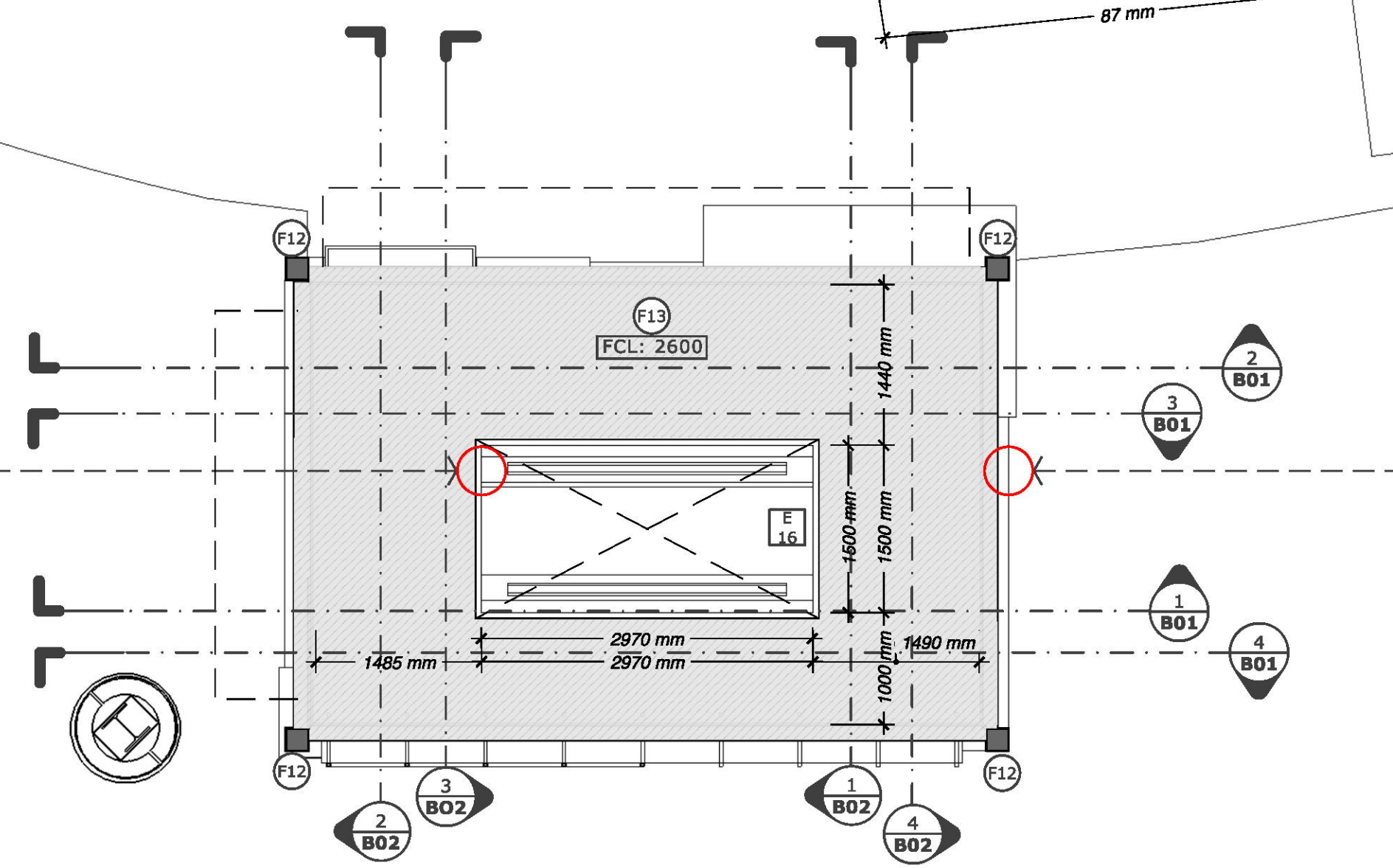
CEILING DETAIL
scale: 1:10
D1
A.07



REFERENCE IMAGE FOR MESH



CEILING DETAIL
scale: 1:10
3
A.07

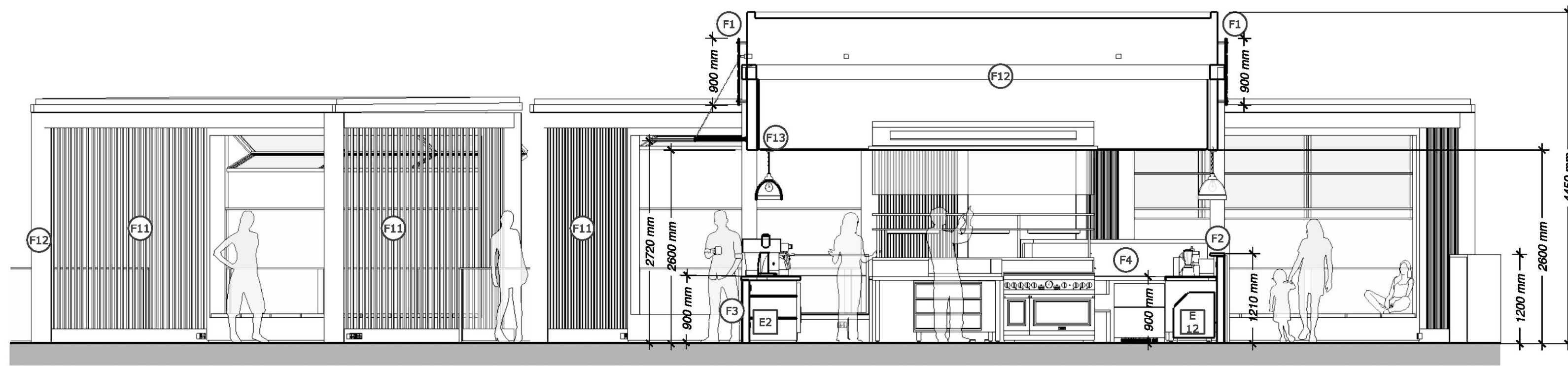


CEILING DETAIL
scale: 1:10
2
A.07

- F# FINISHES-REFER TO FINISHES BOARD
- E# EQUIPMENT-REFER TO EQUIPMENT BOARD
- D# DETAILS-REFER TO DWG.#

PAPER SIZE TO PLOT: A2 (420 x 594mm)

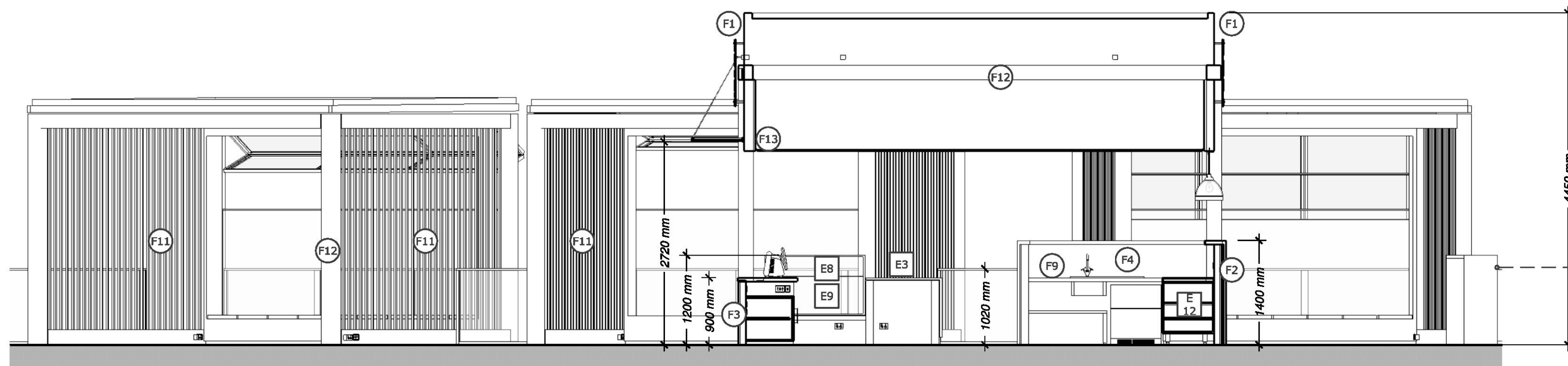
	MIGUEL GONZALEZ Ph: +61 401 560 720 miguel@bsidecreativespace. ABN: 68 891 783 287 B-SIDE Creative Space 104/106 Old Pittwater Rd. Brookvale, NSW 2100	Client name: GIRDERS - WESTFIELD WARRINGAH	Drawing N° A.07
	Drawing Name: FLOOR PLAN - REFLECTED CEILINGS		
	Latest Revision: 31 / August / 2016 Scale: 1:50		



KIOSK LONGIT. SECTION 01

scale: 1:50

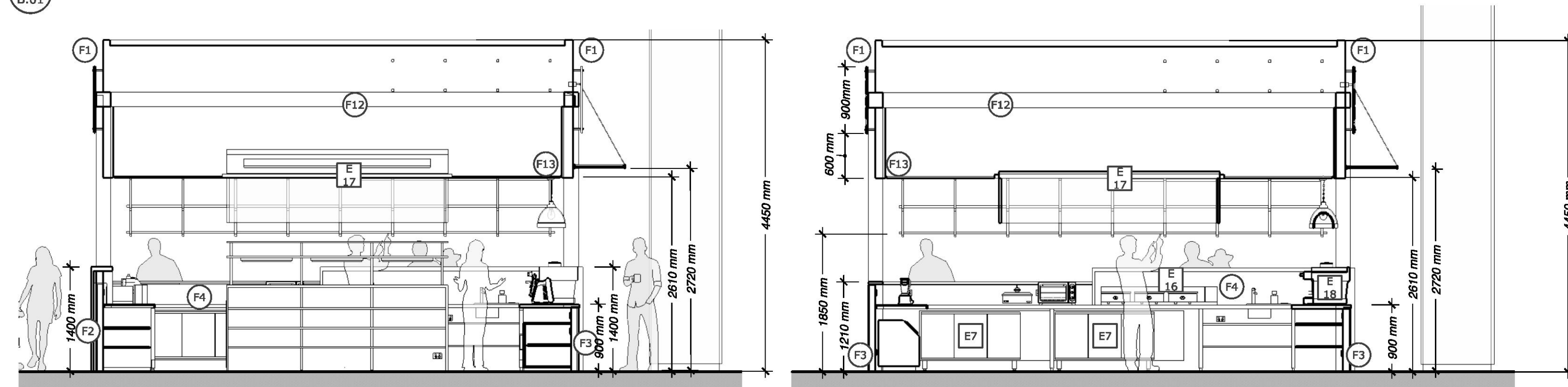
1
B.01



KIOSK LONGIT. SECTION 02

scale: 1:50

2
B.01



KIOSK LONGIT. SECTION 03

scale: 1:50

3
B.01

KIOSK LONGIT. SECTION 04

scale: 1:50

4
B.01

FINISHES

- (F1) Recycled timber (harwood)
Healed and sealed with organic oils
(matt finish)
- (F2) Plasterboard rendered as concrete
finish
- (F3) Ceramics mural with vegetation
theme, as created by Artist
- (F4) Internal lower wall, dressed with
light-gray tiles
- (F5) Shadow joint / Aluminium "U"
profile, as transition between
concrete finished wall and floor
- (F6) Working bench top / Harwood
Healed and sealed with organic oils
(matt finish)
- (F7) Working bench top / Plasterboard
rendered as concrete finish
- (F8) Working bench top / Stainless Steel
on steel frame and under-shelves
- (F9) Baseboard of metal plate rusted
finish
- (F10) Micro perforated panels rusted
finish
- (F11) Steel bars as delivered by Westfield
Rusted finish and sealed
- (F12) Steel Structure Frame, as delivered
by Westfield
Light grey satin
- (F13) Invisible Joint Drywall ceiling
h=260cm from finished floor
Interior matt paint - Colour White
- (F14) Cement floor with polished finish +
anti-slippery coat
- (F15) Hard wood timber floor as
delivered by Westfield

EQUIPMENT

- (E1) BOWL SINK
- (E2) DOUBLE DRAWER UNIT UNDER
FRIDGE-VCS2 serie (1100x700x846")
- (E3) KOMBUCHA DISPENSER
- (E4) CREPE MAKER
- (E5) FREE STANDING CONVECTION OVEN
- (E6) 4 BURNERS COOKTOP WITH GRIDLE
- (E7) 3 DOOR UNDER BENCH FRIDGE
- (E8) HOT DISPLAY
- (E9) COLD DISPLAY
- (E10) HEATER LAMP DISPLAY
- (E11) 3 GROUP COFFEE MACHINE
- (E12) ICE MAKER
- (E13) UNDER BENCH DISHWASHER
- (E14) TOASTERS
- (E15) POS(POINT OF SALE)
- (E16) PIZZA PREPARATION COUNTER
- (E17) S-S EXHAUST HOOD
- (E18) COFFEE GRINDERS
- (E19) HAND WASH BASIN

THIS PLAN TO BE READ IN
CONJUNCTION WITH

DA2016/0974

NORTHERN BEACHES COUNCIL

(F#) FINISHES-REFER TO FINISHES BOARD

(E#) EQUIPMENT-REFER TO EQUIPMENT BOARD

(D#) DETAILS-REFER TO DWG.#



MIGUEL GONZALEZ

Ph: +61 401 560 720
miguel@bsidecrativespace.
ABN: 68 891 783 287
B-SIDE Creative Space
104/106 Old Pittwater Rd.
Brookvale, NSW 2100

Client name: GIRDERS - WESTFIELD WARRINGAH

Drawing Name: KIOSK LONGITUDINAL SECTIONS

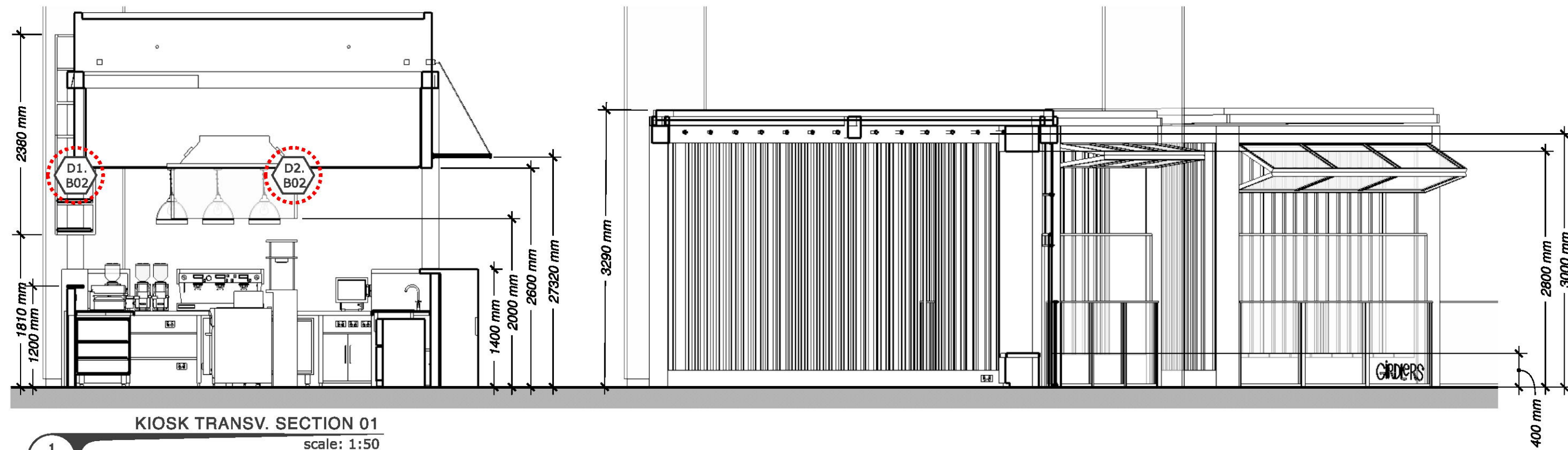
Latest Revision: 31 / August / 2016

Scale: 1:50

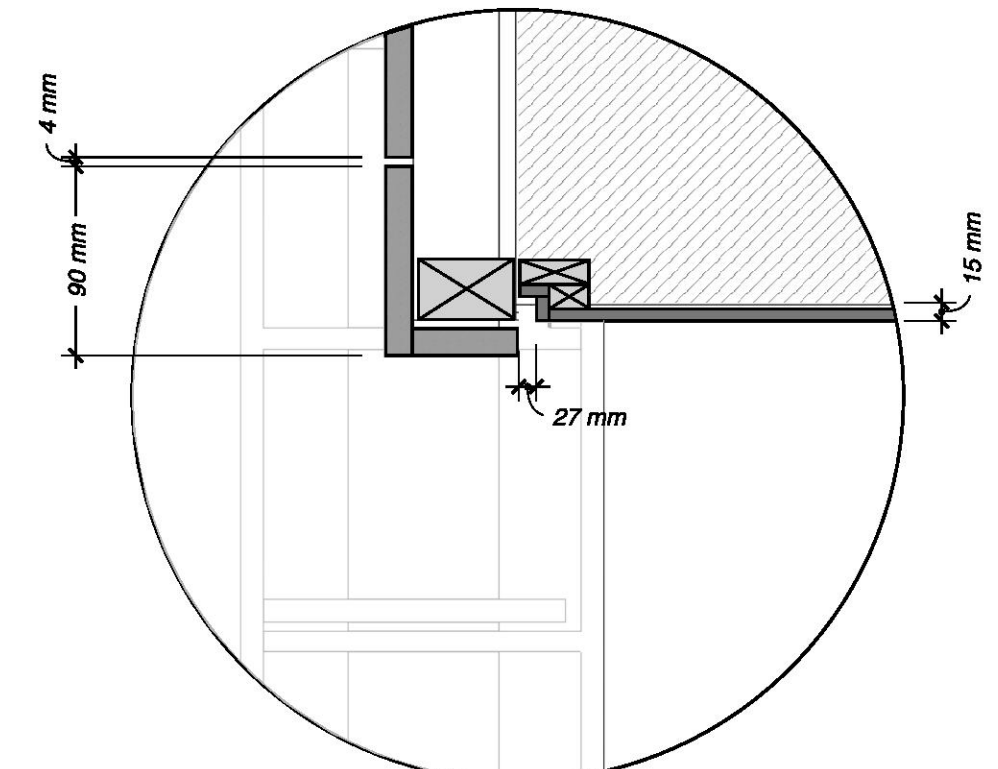
Drawing N°

B.01

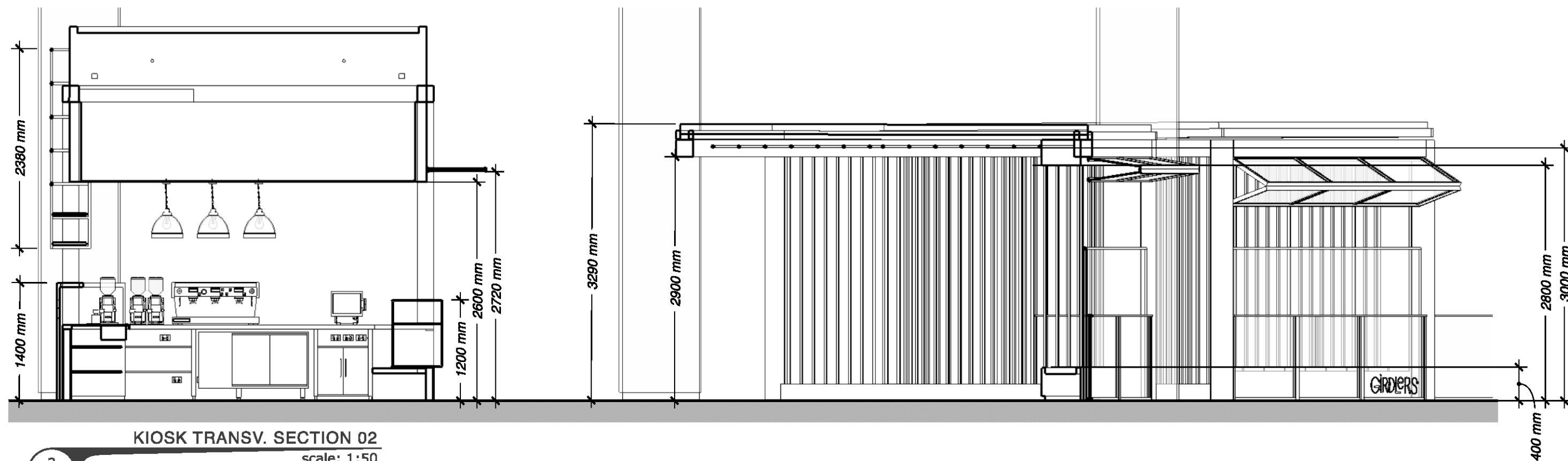
PAPER SIZE TO PLOT: A2 (420 x 594mm)



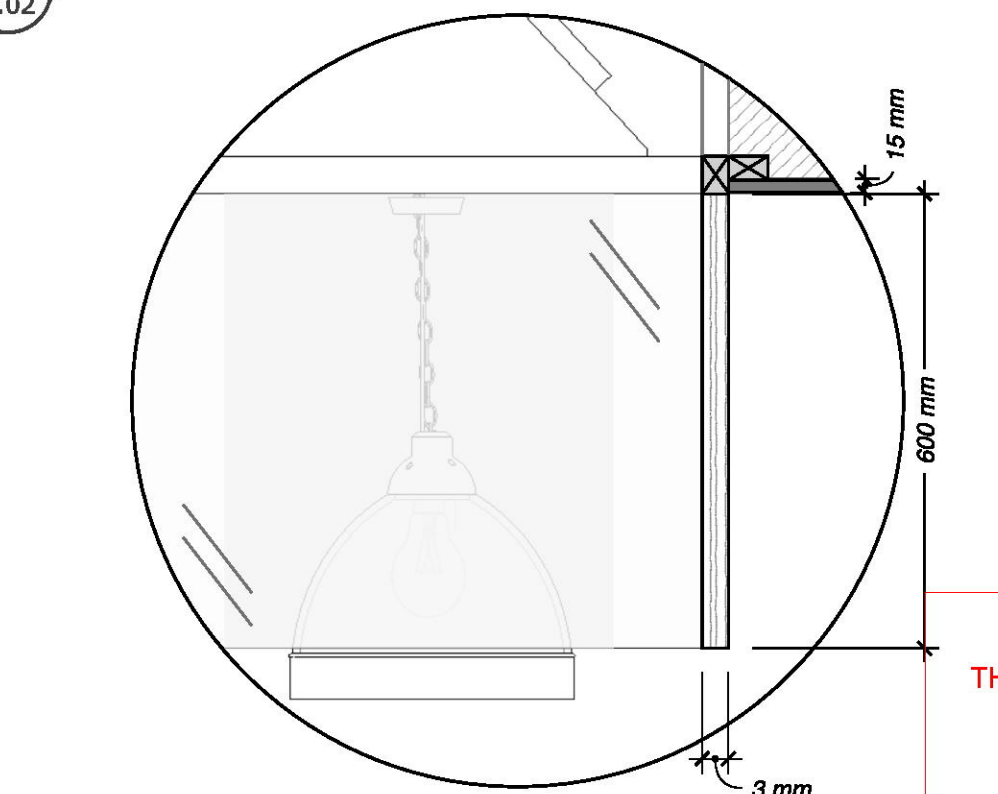
KIOSK TRANSV. SECTION 01
scale: 1:50



CEILING SECTION 01
scale: 1:10

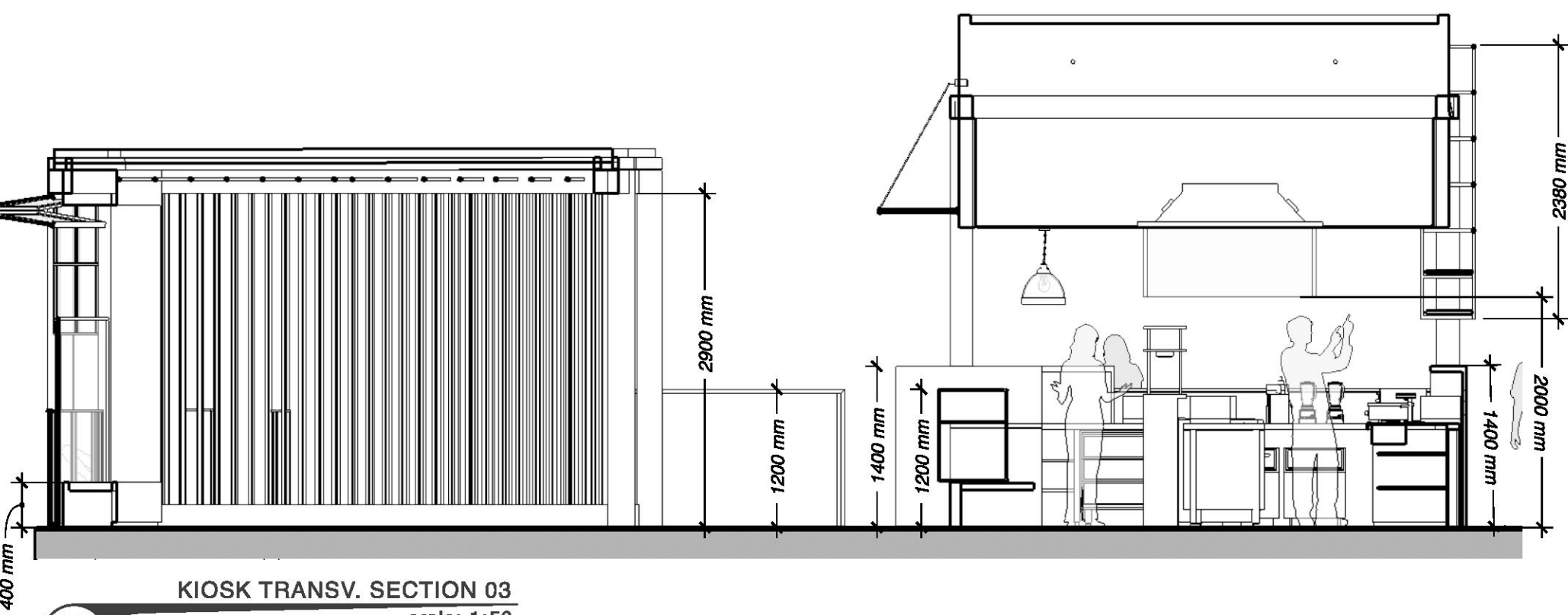


KIOSK TRANSV. SECTION 02
scale: 1:50

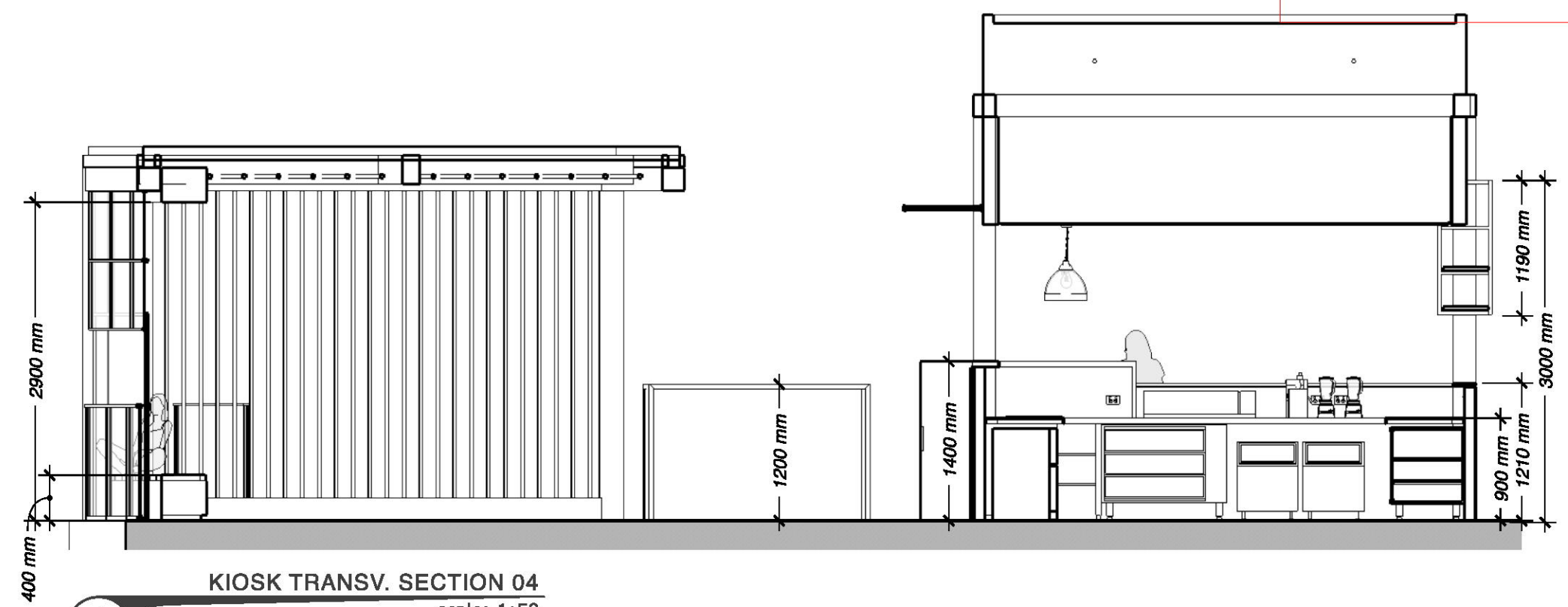


KITCHEN HOOD SECTION
scale: 1:10

THIS PLAN TO BE READ IN
CONJUNCTION WITH
DA2016/0974
NORTHERN BEACHES COUNCIL



KIOSK TRANSV. SECTION 03
scale: 1:50



KIOSK TRANSV. SECTION 04
scale: 1:50

- F# FINISHES-REFER TO FINISHES BOARD
- E# EQUIPMENT-REFER TO EQUIPMENT BOARD
- D# DETAILS-REFER TO DWG.#



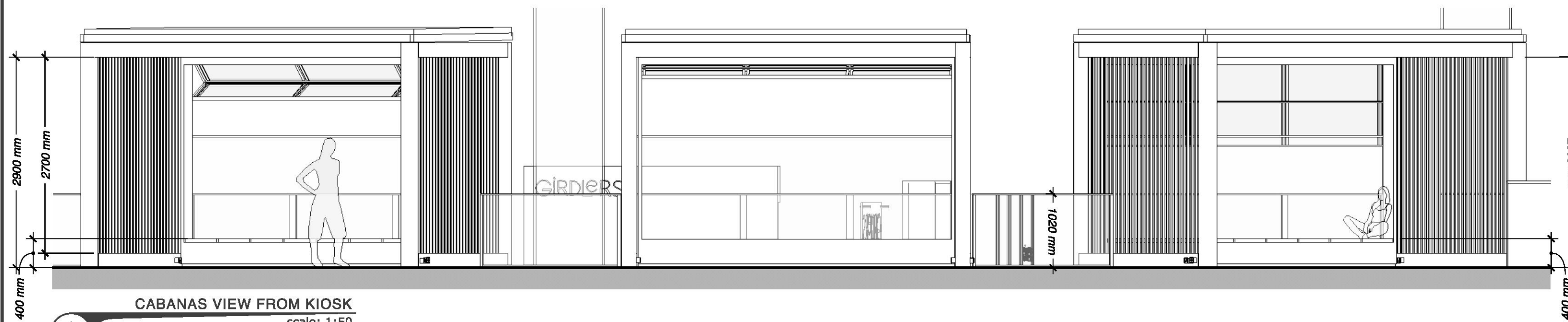
MIGUEL GONZALEZ
Ph: +61 401 560 720
miguel@bsidecreativespace.
ABN: 68 891 783 287
B-SIDE Creative Space
104/106 Old Pittwater Rd.
Brookvale, NSW 2100

Client name: **GIRDERS - WESTFIELD WARRINGAH**
Drawing Name: **KIOSK TRANSVERSE SECTIONS**
Latest Revision: **31/ August / 2016** Scale: **1:50**

Drawing N°

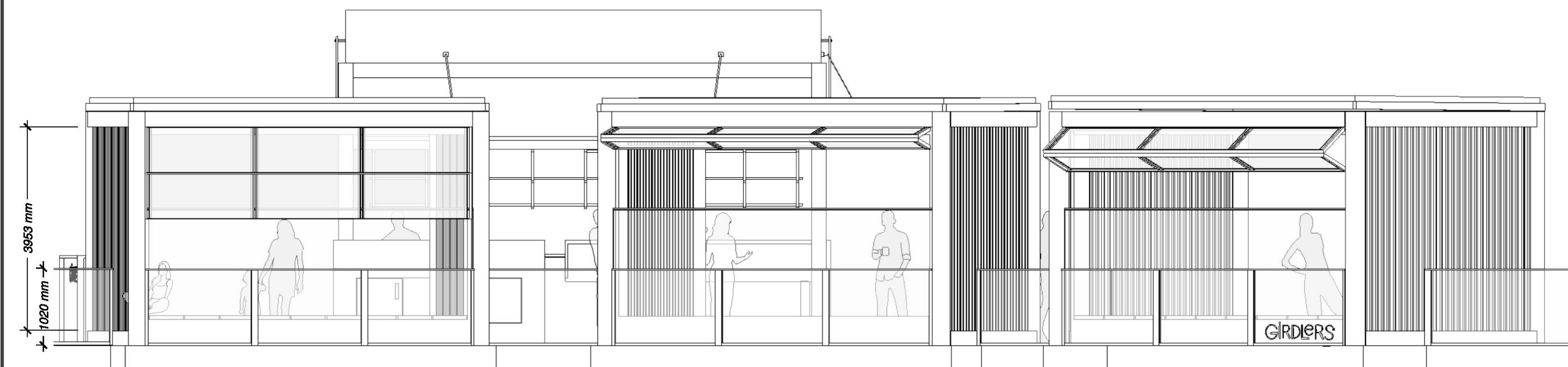
B.02

PAPER SIZE TO PLOT: A2 (420 x 594mm)



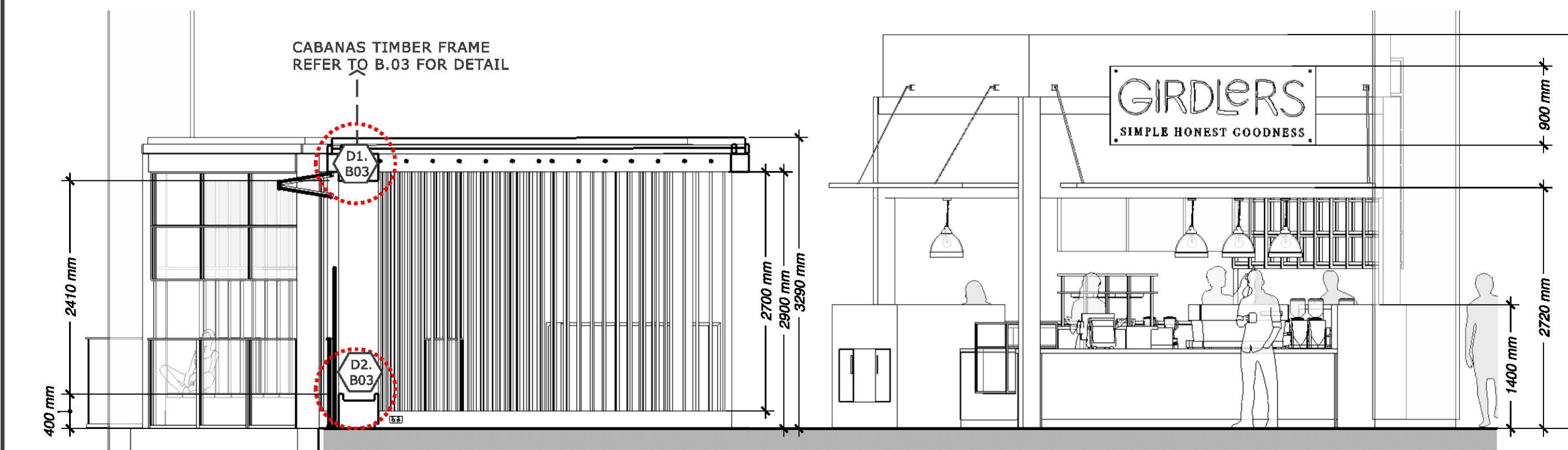
CABANAS VIEW FROM KIOSK
scale: 1:50

1
B.03



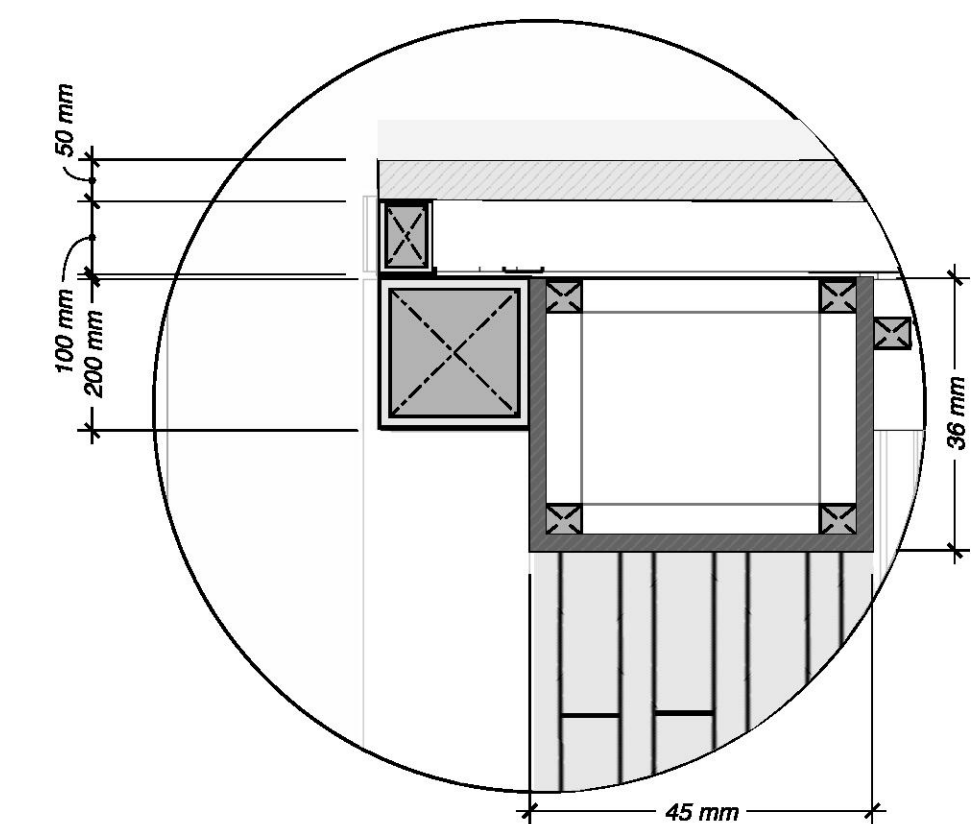
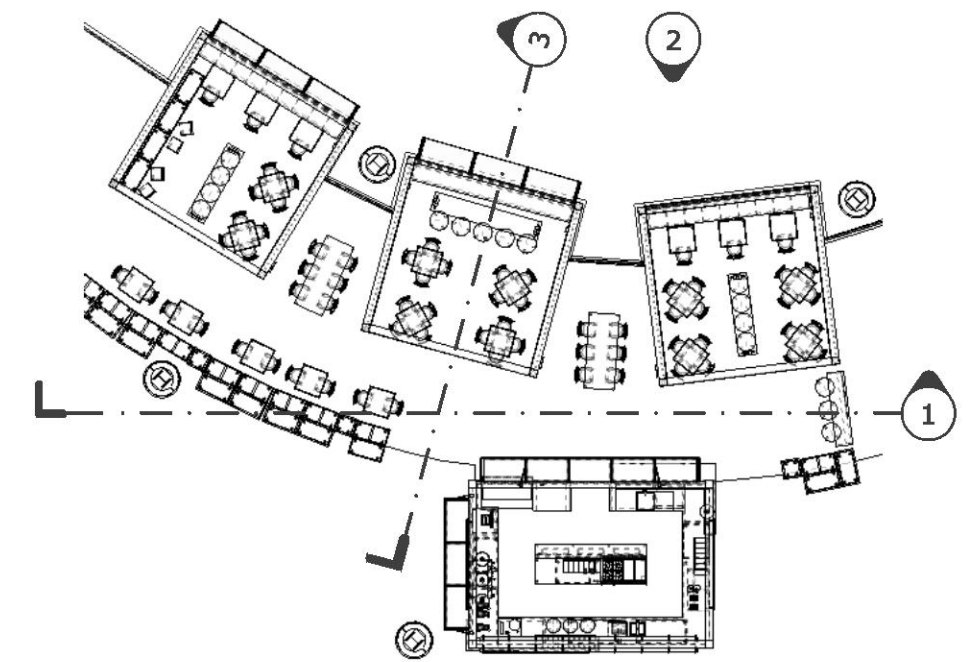
CABANAS VIEW FROM VOID
scale: 1:50

2
B.03



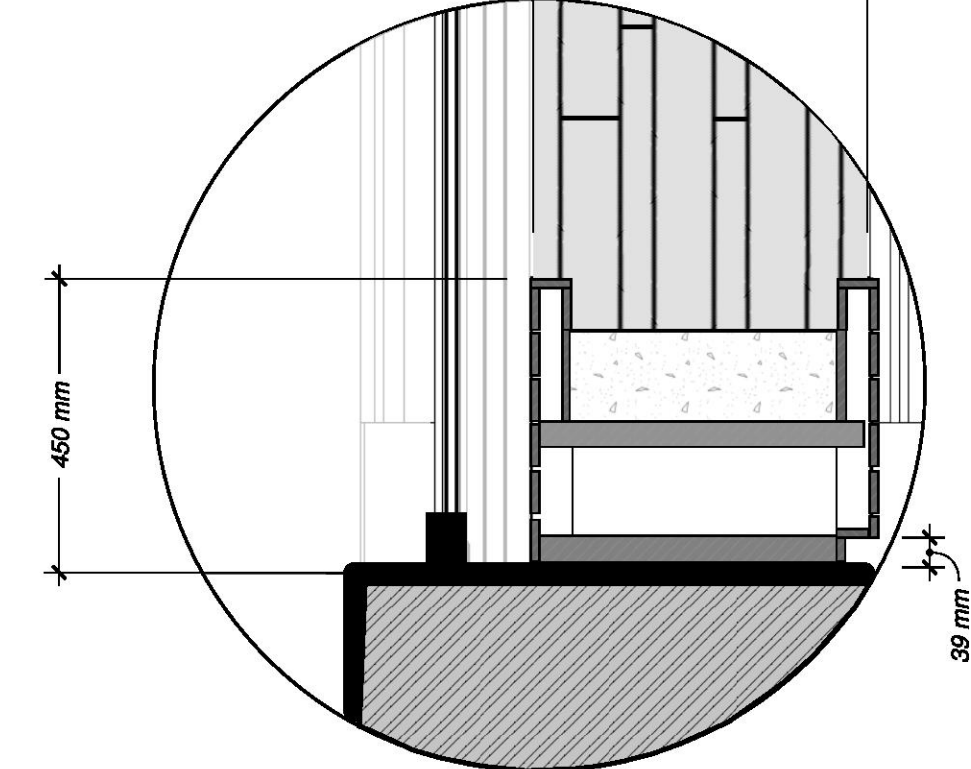
CABANA TRANSVERSE SECTION
scale: 1:50

3
B.03



FRAME DETAIL
scale: 1:10

D1
B.03



FRAME DETAIL
scale: 1:10

D2
B.03

THIS PLAN TO BE READ IN
CONJUNCTION WITH
DA2016/0974
NORTHERN BEACHES COUNCIL

- F# FINISHES-REFER TO FINISHES BOARD
E# EQUIPMENT-REFER TO EQUIPMENT BOARD
D# DETAILS-REFER TO DWG. #

PAPER SIZE TO PLOT: A2 (420 x 594mm)

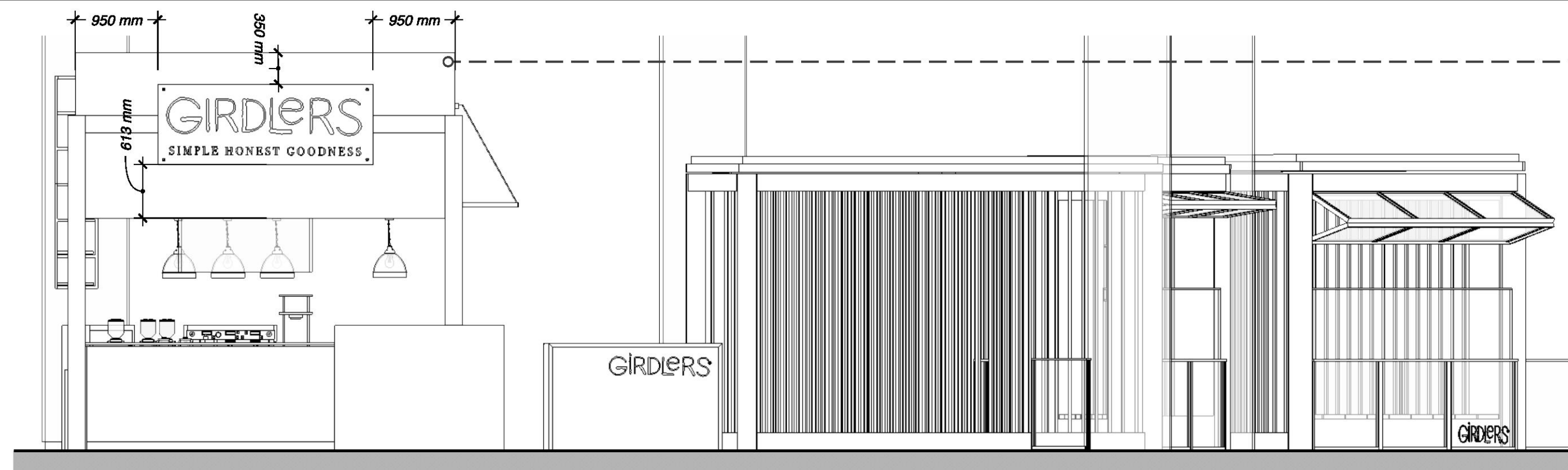


MIGUEL GONZALEZ
Ph: +61 401 560 720
miguel@bsidecreativespace.
ABN: 68 891 783 287
B-SIDE Creative Space
104/106 Old Pittwater Rd.
Brookvale, NSW 2100

Client name: **GIRDERS - WESTFIELD WARRINGAH**
Drawing Name: **CABANAS - ELEVATIONS & SECTIONS**
Latest Revision: **31 / August / 2016** Scale: **1:50**

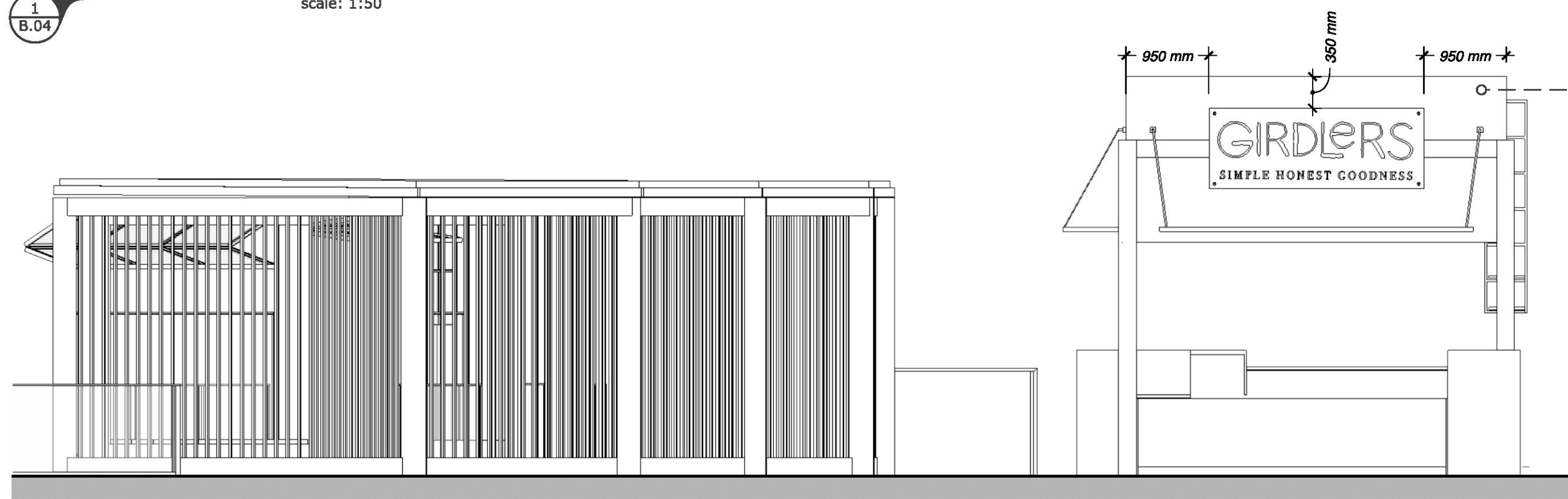
Drawing N°

B.03



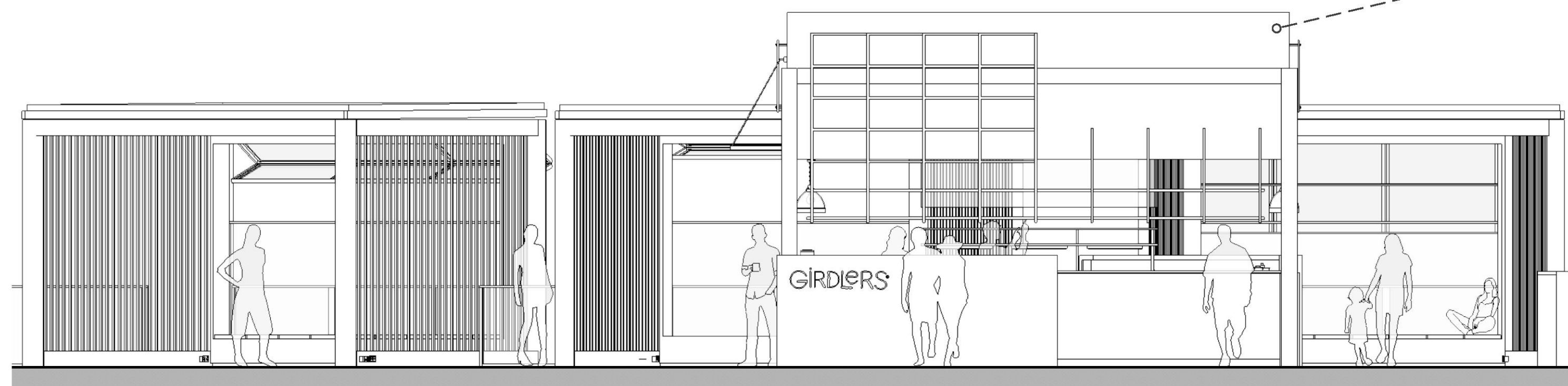
NORTH ELEVATION
scale: 1:50

1
B.04



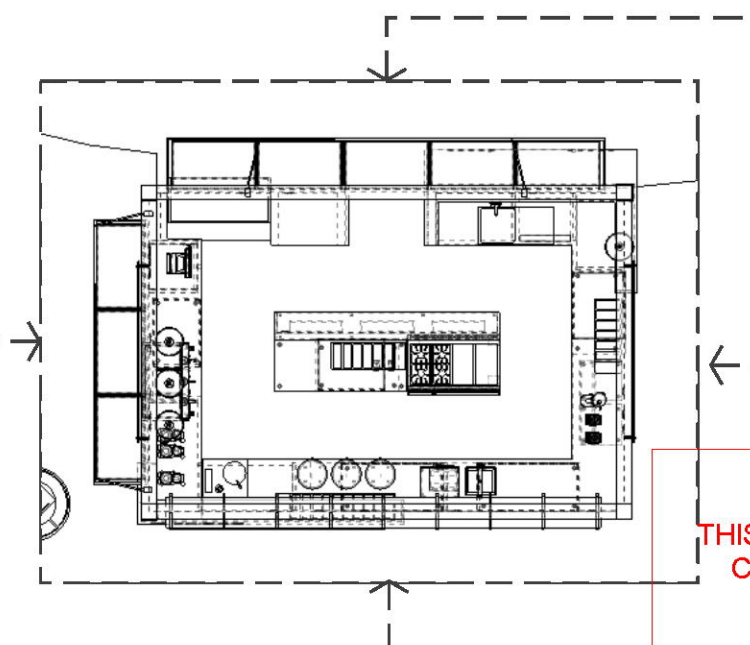
SOUTH ELEVATION
scale: 1:50

2
B.04



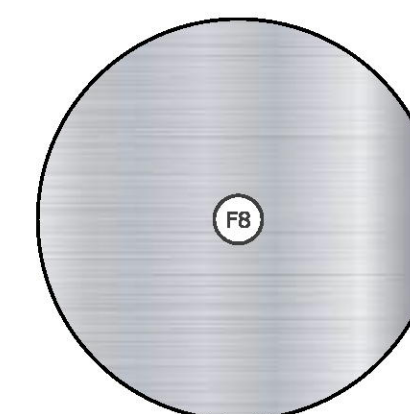
EAST ELEVATION
scale: 1:50

3
B.04

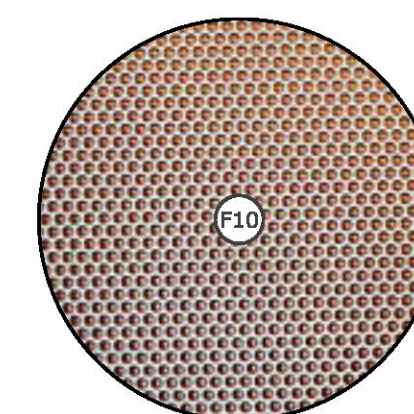


THIS PLAN TO BE READ IN
CONJUNCTION WITH
DA2016/0974
NORTHERN BEACHES COUNCIL

MATERIAL BOARD



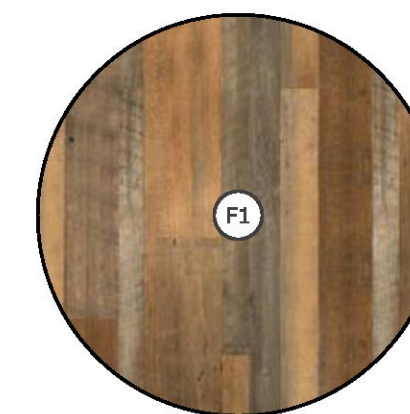
F8



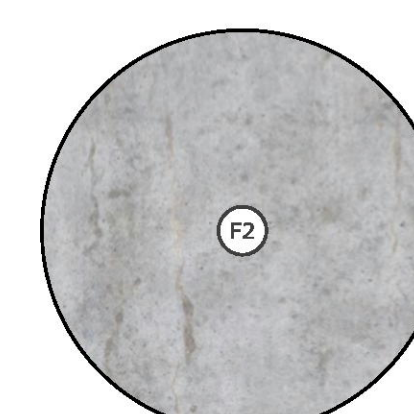
F10



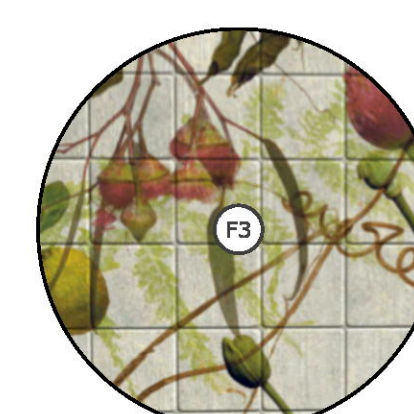
F11



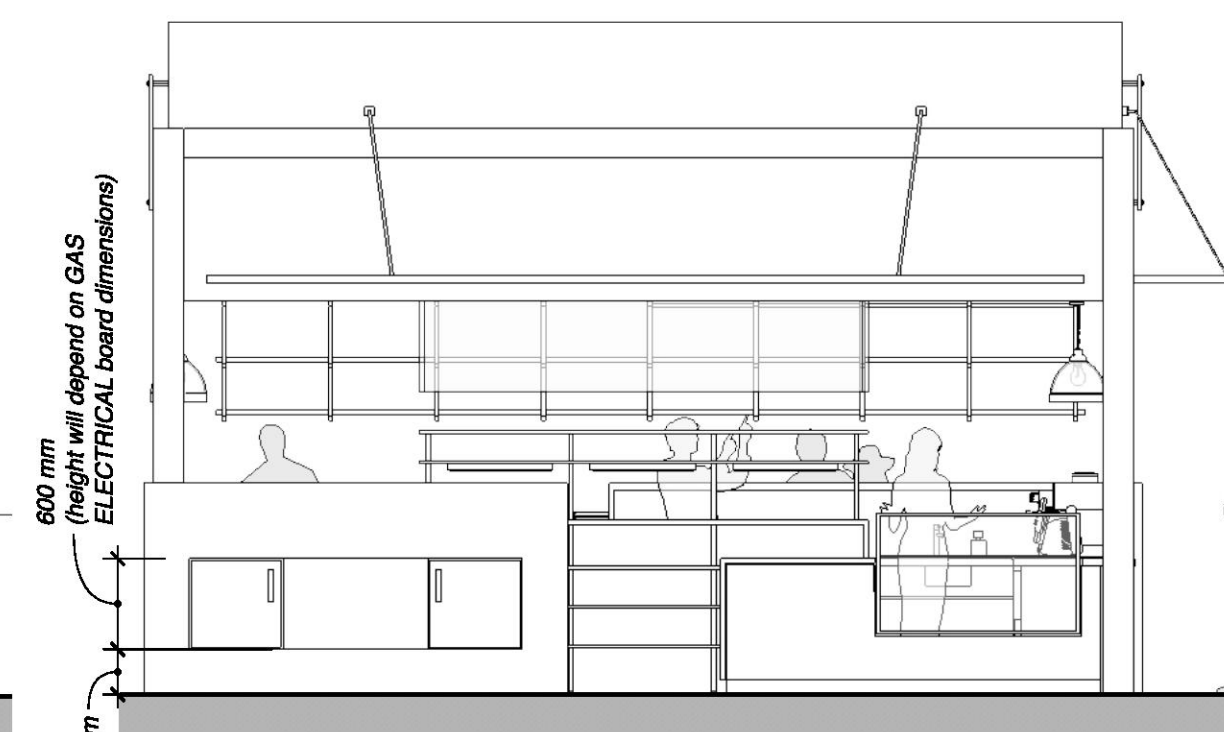
F1



F2



F3



WEST ELEVATION
scale: 1:50

4
B.04

- F#** FINISHES-REFER TO FINISHES BOARD
- E#** EQUIPMENT-REFER TO EQUIPMENT BOARD
- D#** DETAILS-REFER TO DWG.#



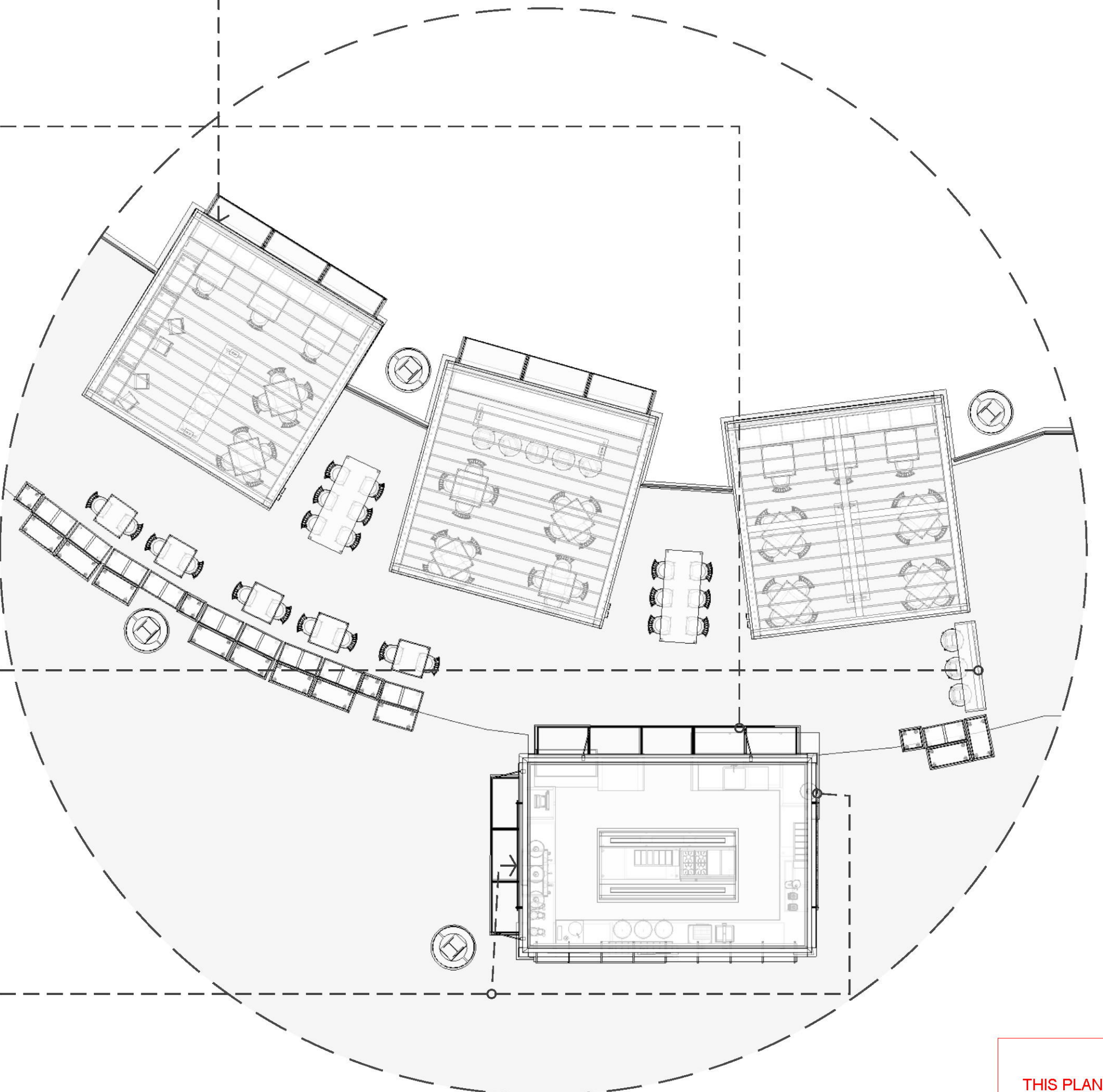
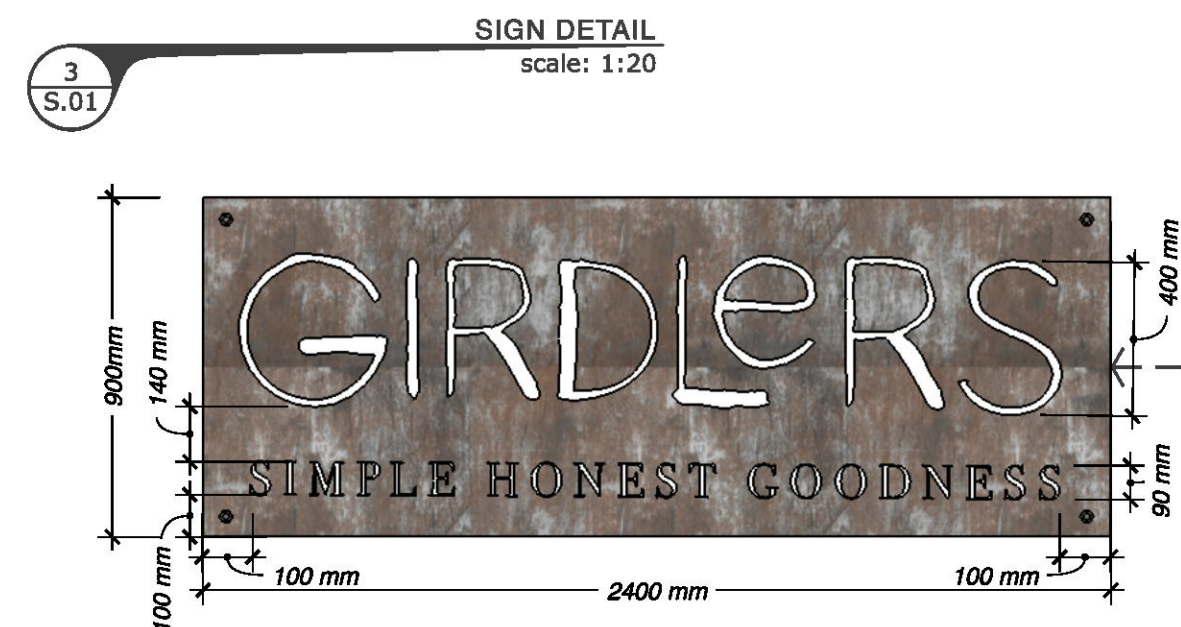
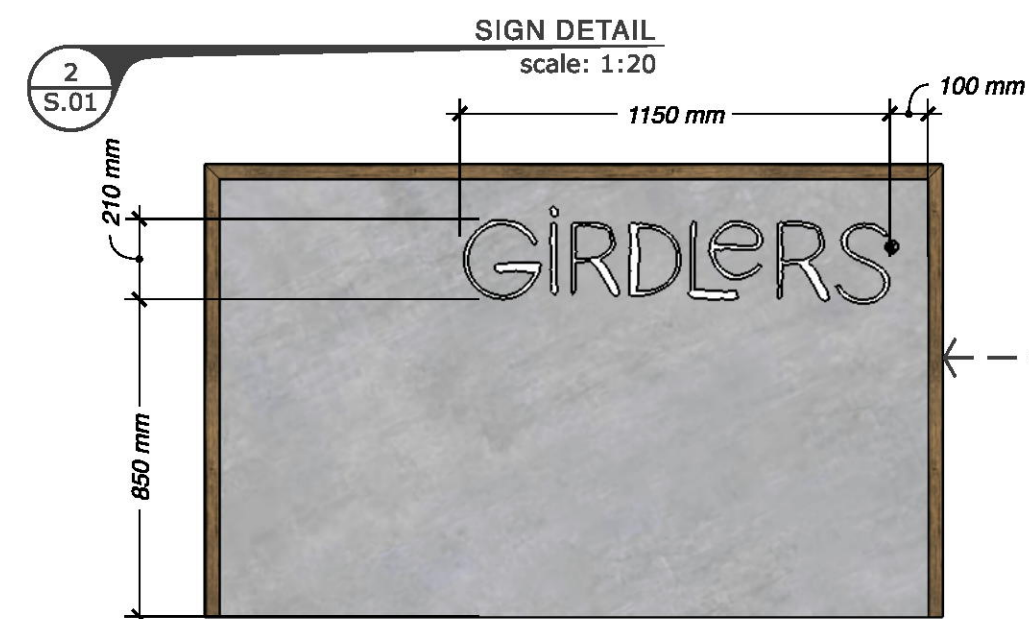
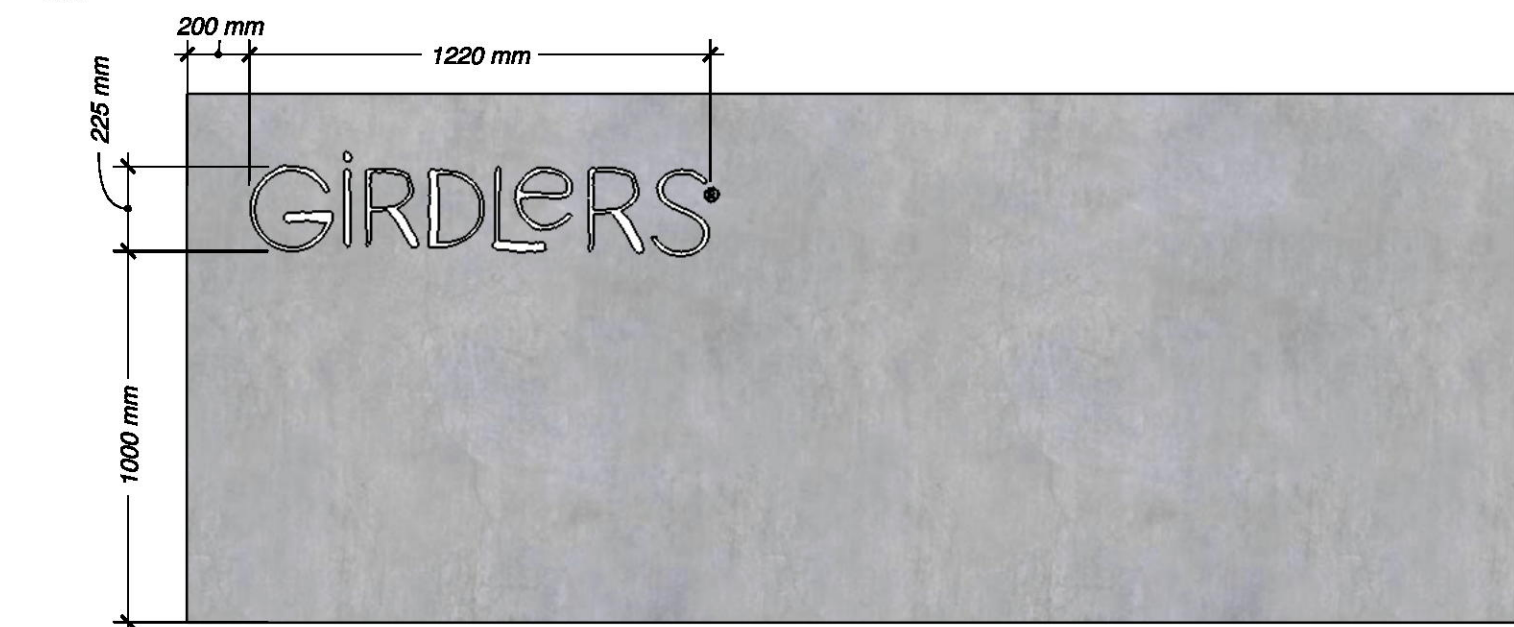
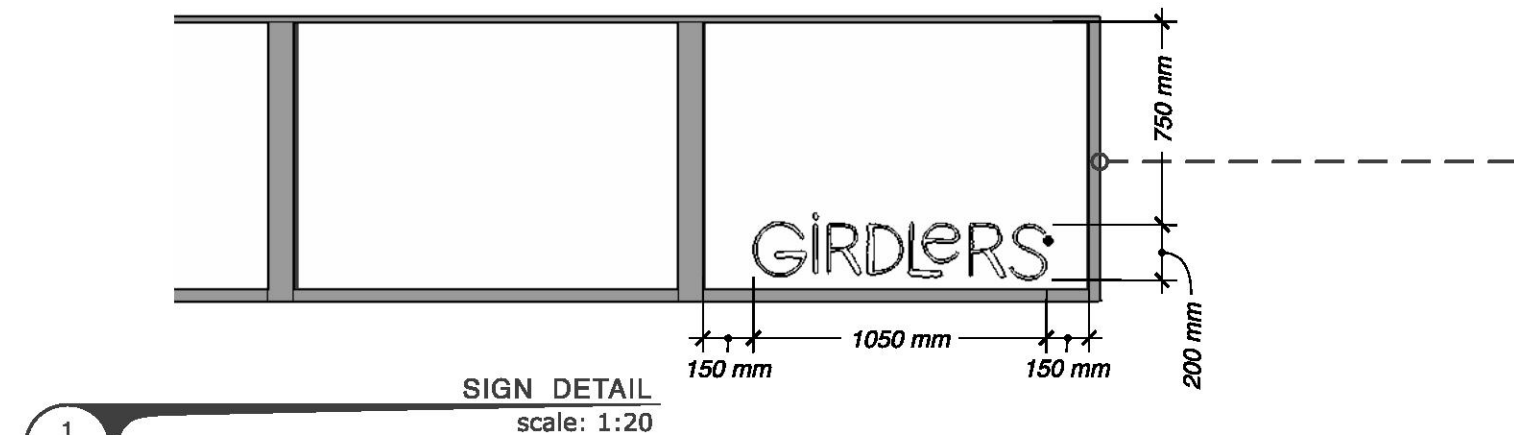
PAPER SIZE TO PLOT: A2 (420 x 594mm)

MIGUEL GONZALEZ
Ph: +61 401 560 720
miguelf@bsidecreativespace.
ABN: 68 891 783 287
B-SIDE Creative Space
104/106 Old Pittwater Rd.
Brookvale, NSW 2100

Client name: **GIRDERS - WESTFIELD WARRINGAH**
Drawing Name: **ELEVATIONS**
Latest Revision: **31 / August / 2016** Scale: **1:50**

Drawing N°

B.04



THIS PLAN TO BE READ IN
CONJUNCTION WITH

DA2016/0974

NORTHERN BEACHES COUNCIL

- (F#) FINISHES-REFER TO FINISHES BOARD
(E#) EQUIPMENT-REFER TO EQUIPMENT BOARD
(D#) DETAILS-REFER TO DWG.#

PAPER SIZE TO PLOT: A2 (420 x 594mm)



MIGUEL GONZALEZ
Ph: +61 401 560 720
miguelf@bsidecrativespace.
ABN: 68 891 783 287
B-SIDE Creative Space
104/106 Old Pittwater Rd.
Brookvale, NSW 2100

Client name: **GIRD LERS - WESTFIELD WARRINGAH**
Drawing Name: **SIGNS**
Latest Revision: **31 / August / 2016** Scale: **1:20**

Drawing N°

S.01