

KOOLOORA AVENUE

D P 7 0 2 2

SEC. 2

22

15

14

13

SP210

GORE STREET

214°35'50"

113.91

9

10

11

24

2797

DP820312

SEC. 3

8

7

6

5

1

2

3

20

21

22

23

4

99.975

304°36'30"

DP820312

MOORE ROAD

2797

D P 9 0 9 0 2 3

1

NOTES

- TREE SPREADS SHOWN 'APPROXIMATELY' ONLY
- CONTOURS SHOWN ARE INDICATIVE ONLY
- VISIBLE SERVICES (AT TIME OF SURVEY) SHOWN ONLY
- NO SERVICE PITS ACCESSED/OOPENED SHOWN AS LABELED
- BOUNDARIES BY THE TITLE DIAGRAM ONLY (NOT SURVEYED)
- ALL PITS SHOULD BE ACCESSED, CONFIRMED AND HAVE SUBSURFACE EXTENTS MEASURED BY THE RELEVANT AUTHORITIES, PRIOR TO ADOPTION.
- ALL PIPES, CABLES & DUCTS IN THE EXCAVATION AREA SHOULD BE ACCURATELY LOCATED BY A 'PIPE LOCATOR' OR BY THE RELEVANT AUTHORITY, PRIOR TO ANY EXCAVATION IS UNDERTAKEN.
- THE SUBJECT TITLE IS BURDENED BY COVENANTS(VIDE A57918, A54669, A231181, A238379, A285346, A222511)

SHEET 1/2

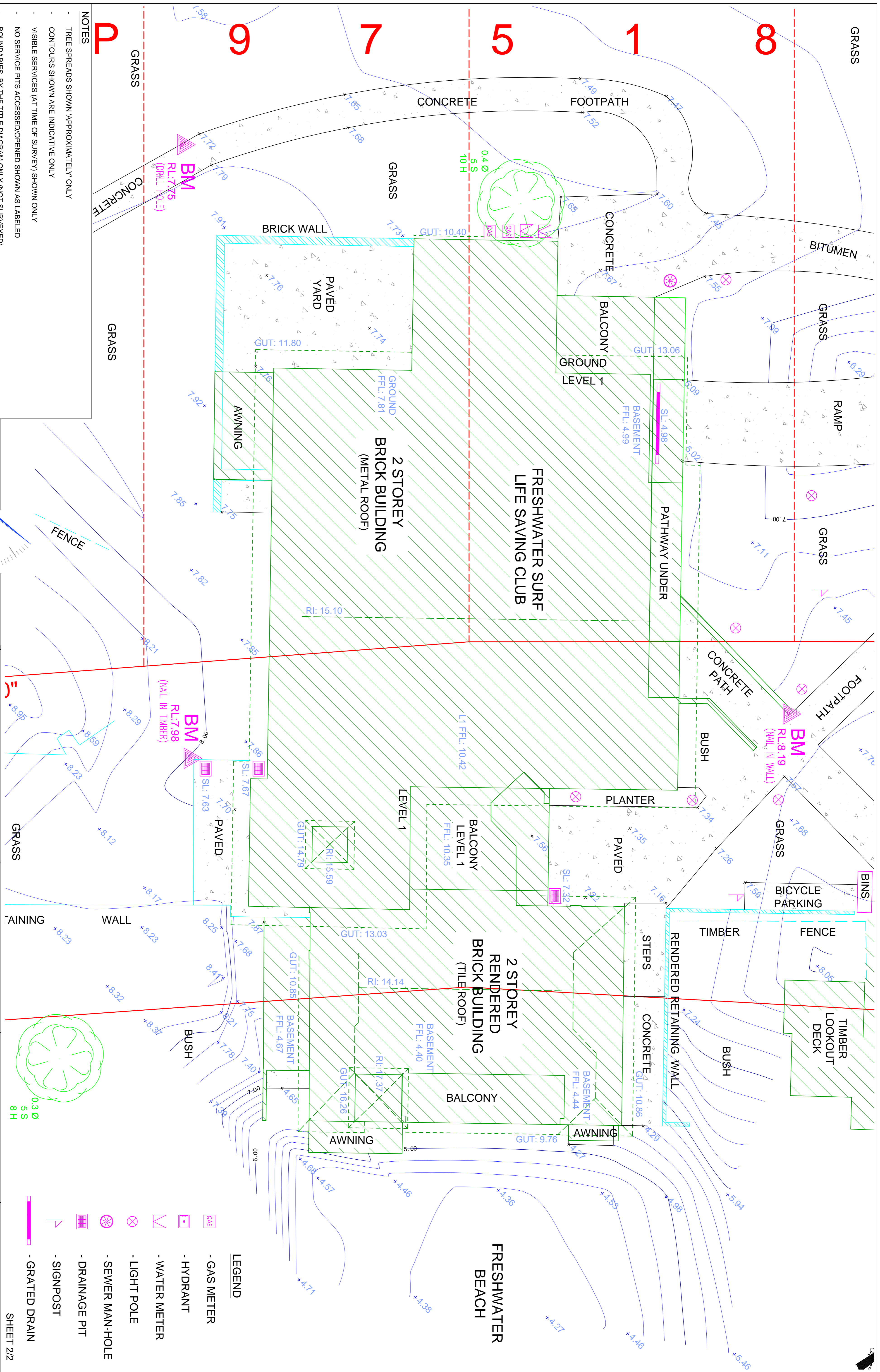


PO BOX 3222
 REDFERN, NSW, 2016
 Ph: (02) 8065 1156
 Fax: (02) 8065 1297
 Email: survey@daw-walton.com.au

DETAIL SURVEY @
 KOOLOORA AVENUE,
 FRESHWATER NSW 2096
 CLIENT: FRESHWATER LIFE SAVING CLUB

JOB No: 3342-16
 SURVEYED ON: 16/11/2016
 BY: L. W. & S. R.
 DRAWN ON: 18/11/2016
 BY: L. W.

SCALE: 1:300 (@A1) 1:600 (@A3)
 NORTH: MAGNETIC (by DP820312)
 DATUM: PM 2225 R.L.:11.841 (AHD)
 CONTOUR INT: 1.0MAJ/O.2MIN



NOTES

- TREE SPREADS SHOWN 'APPROXIMATELY' ONLY
- CONTOURS SHOWN ARE INDICATIVE ONLY
- VISIBLE SERVICES (AT TIME OF SURVEY) SHOWN ONLY
- NO SERVICE PITS ACCESSED/OOPENED SHOWN AS LABELED
- BOUNDARIES BY THE TITLE DIAGRAM ONLY (NOT SURVEYED)
- ALL PITS SHOULD BE ACCESSED, CONFIRMED AND HAVE SUBSURFACE EXTENTS MEASURED BY THE RELEVANT AUTHORITIES, PRIOR TO ADOPTION.
- ALL PIPES, CABLES & DUCTS IN THE EXCAVATION AREA SHOULD BE ACCURATELY LOCATED BY A 'PIPE LOCATOR' OR BY THE RELEVANT AUTHORITY, PRIOR TO ANY EXCAVATION IS UNDERTAKEN.
- THE SUBJECT TITLE IS BURDENED BY COVENANTS/VIDE A57918, A64669, A231181, A238379, A285346, A222511)

LEGEND

- GAS METER
- HYDRANT
- WATER METER
- LIGHT POLE
- SEWER MAN-HOLE
- DRAINAGE PIT
- SIGNPOST
- GRATED DRAIN

SHEET 2/2

daw & walton
 CONSULTING SURVEYORS
 A.B.N 65 120 413 372

PO BOX 3222
 REDFERN, NSW, 2016
 Ph: (02) 8065 1156
 Fax: (02) 8065 1297
 Email: survey@daw-walton.com.au

DETAIL SURVEY @
 KOOLOORA AVENUE,
 FRESHWATER NSW 2096
 CLIENT: FRESHWATER LIFE SAVING CLUB

JOB No: 3342-16
 SURVEYED ON: 16/11/2016
 BY: L. W. & S. R.
 DRAWN ON: 18/11/2016
 BY: L. W.

SCALE: 1:100 (@A1) / 1:200 (@A3)
 NORTH: MAGNETIC (by DP820312)
 DATUM: PM 2225 RL:11.841 (AHD)
 CONTOUR INT: 1.0MA/J0.2MIN

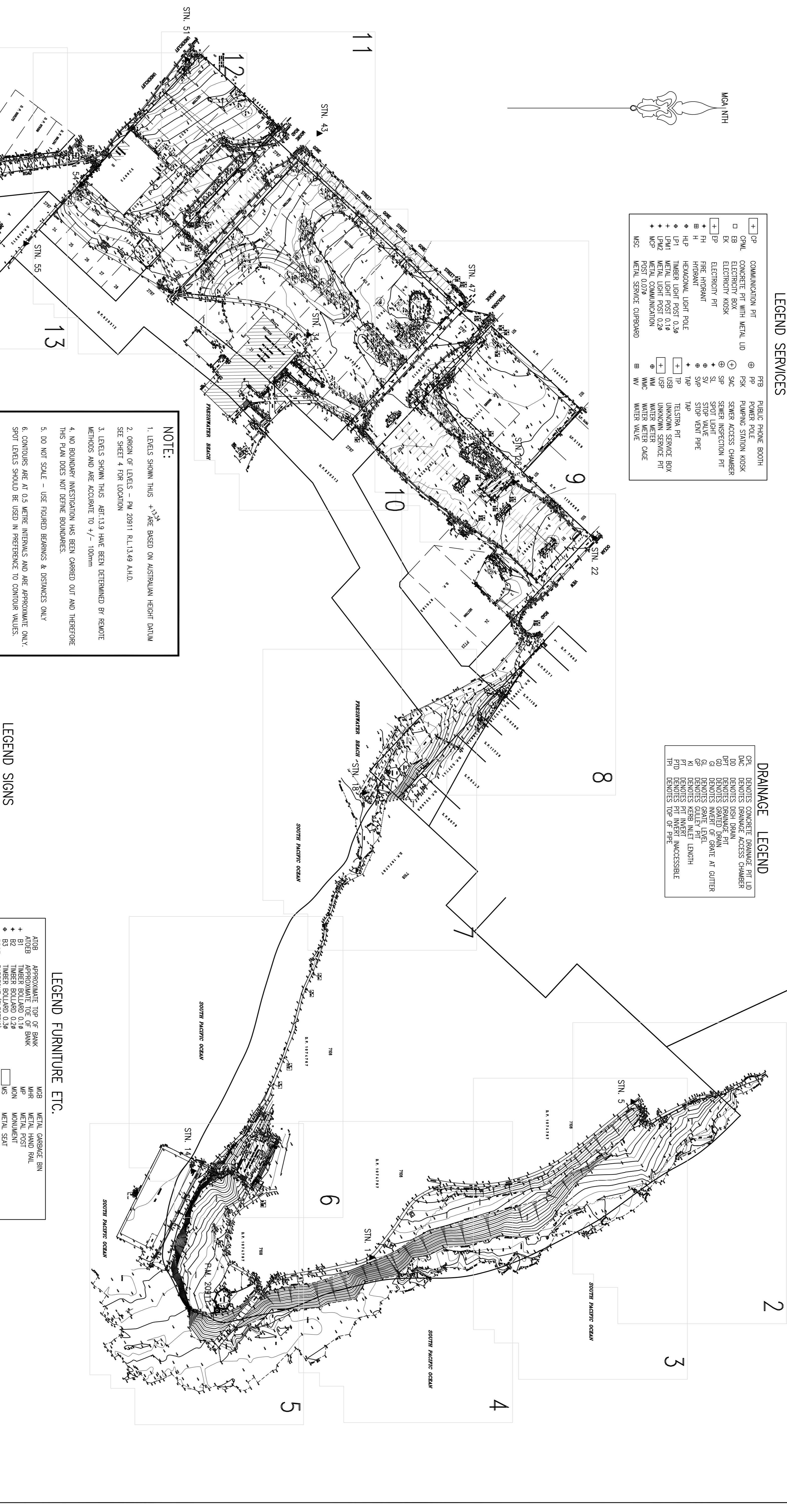
Copyright The intellectual property contained within this plan is the exclusive property of Daw & Walton Pty Ltd and may not be used, copied or reproduced wholly or in part without the full consent of Daw & Walton Pty Ltd. (ABN 65 120 413 372)

LEGEND SERVICES

CP	COMMUNICATION PIT	PPB	PUBLIC PHONE BOOTH
CPML	CONCRETE PIT WITH METAL LID	PP	POWER POLE
EB	ELECTRICITY BOX	PSK	PUMPING STATION KIOSK
EX	ELECTRICITY KIOSK	SAC	SEWER ACCESS CHAMBER
EP	ELECTRICITY PIT	SIP	SEWER INSPECTION PIT
FH	FIRE HYDRANT	SL	SPOT LIGHT
H	HOBANIT	SV	STOP VALVE
HHP	HEXAGONAL LIGHT POLE	SVP	STOP VENT PIPE
LPM1	TIMBER LIGHT POST 0.3M	TAP	TELSTRA PIT
LPM2	METAL LIGHT POST 0.1M	USB	UNKNOWN SERVICE BOX
LPM3	METAL LIGHT POST 0.2M	USP	UNKNOWN SERVICE PIT
MCP	METAL COMMUNICATION POST 0.07M	WM	WATER METER
MSC	METAL SERVICE COUPOARD	WMC	WATER METER CAGE
		WV	WATER VALVE

DRAINAGE LEGEND

CP	DENOTES CONCRETE DRAINAGE PIT LID
DAC	DENOTES DRAINAGE ACCESS CHAMBER
DPI	DENOTES DRAINAGE PIT
GD	DENOTES GRADED DRAIN
G1	DENOTES INVERT OF GRATE AT GUTTER
G2	DENOTES GRADE LEVEL
G3	DENOTES GULLY PIT
G4	DENOTES GULLY PIT LENGTH
PI	DENOTES PIT INVERT
PII	DENOTES PIT INVERT UNACCESSIBLE
PII	DENOTES TOP OF PIPE



NOTE:

- LEVELS SHOWN THUS + ARE BASED ON AUSTRALIAN HEIGHT DATUM
- ORIGIN OF LEVELS - PM 20911 R.L.13,49 A.H.D. SEE SHEET 4 FOR LOCATION
- LEVELS SHOWN THUS AHT13.9 HAVE BEEN DETERMINED BY REMOTE METHODS AND ARE ACCURATE TO +/- 100mm
- NO BOUNDARY INVESTIGATION HAS BEEN CARRIED OUT AND THEREFORE THIS PLAN DOES NOT DEFINE BOUNDARIES.
- DO NOT SCALE - USE FIGURED BEARINGS & DISTANCES ONLY
- CONTOURS ARE AT 0.5 METRE INTERVALS AND ARE APPROXIMATE ONLY. SPOT LEVELS SHOULD BE USED IN PREFERENCE TO CONTOUR VALUES.
- BASIC LEVEL AND DETAIL SURVEY ONLY - UNLESS OTHERWISE SHOWN, THE POSITION OF IMPROVEMENTS ARE APPROXIMATE. THE INFORMATION SHOWN HEREON IS ONLY TO BE USED AT AN ACCURACY OF 1:200
- THE DIAMETER, SPREAD AND HEIGHT OF ALL TREES ARE ESTIMATES ONLY. IF THEY ARE CRITICAL TO DESIGN THEN A MORE ACCURATE SURVEY WOULD BE REQUIRED.
- FEATURES & LEVELS CRITICAL TO DESIGN SHOULD BE LOCATED BY A MORE ACCURATE SURVEY
- ALL SET OUT WITH REGARD TO LEVELS SHOULD BE REFERRED TO THE BENCH MARK
- OTHER THAN THE POSITION OF OVERHEAD ELECTRICITY CABLES NO OTHER SERVICE AUTHORITY SERVICE LINES HAVE BEEN PLOTTED. THIS IS DUE TO THE LACK OF INFORMATION ON SITE THAT WOULD ASSIST IN PLOTTING THE POSITION OF THE SERVICE LINES. (REFER TO NOTE 12)
- EXISTING SERVICES MAY IMPACT ON DESIGN/CONSTRUCTION - IT IS ADVISED THAT A COMPREHENSIVE SERVICES SEARCH BE CARRIED OUT PRIOR TO COMMENCEMENT OF DESIGN/CONSTRUCTION REFER TOAL BEFORE YOU DIG* DETAILS ON THIS PLAN
- ORIGIN OF THE NORTH POINT IS THE MGA CO-ORDINATES OF PM.20911 & SSM79.

LEGEND SIGNS

20KSL	20 KILOMETRE SPEED LIMIT
12P	12 P PARKING LIMIT
AP	ALCOHOL PROHIBITED
BP	DISABLED PARKING
BR	BUSH REGENERATION
BRD	EMERGENCY VEHICLES ONLY
CK	KEEP CLEAR AMBULANCE ONLY
KOSM	NO ENTRY STOP WATER PUMP
NE	NO PARKING
NV	NEIGHBOURHOOD WATCH
OS	ORDNANCE SIGN
OW	ONE WAY
OM	ONE WAY MARKED BAY
PHB	PARKING MARKED BAY
SS	STREET

LEGEND FURNITURE ETC.

ATOP	APPROXIMATE TOP OF BANK	MGB	METAL GARBAGE BIN
ATOPB	TIMBER BOLLARD 0.1M	MHR	METAL HAND RAIL
B1	TIMBER BOLLARD 0.2M	MP	METAL POST
B2	TIMBER BOLLARD 0.3M	MON	MONUMENT
B3	BARBECUE (ELECTRIC)	MS	METAL SEAT
BBS	BRICK EDGE STRIP	MSAT	METAL SEAT & TABLE
BES	BRICK EDGE STRIP	MSP	METAL SHOWER POST
BPA	TIMBER PAVED AREA	PE	PLAYGROUND EQUIPMENT
BO	TIMBER BOLLARD 0.1 SQUARE	PC	PRAM CROSSING
BR	BICYCLE RACK	PTD	PARKING TICKET DISPENSER
BRB	BRICK WALL	RKF	ROCK FEATURE
BW	CONCRETE DRIVE	SE	STONE EDGING
CD	CONCRETE DRIVE	SP	STONE PATH
CES	CONCRETE EDGE STRIP	SPL	STEEL POST 0.07M
CHW	CONCRETE PATH	SPL	SPRINKLER
CH	CONCRETE HEAD WALL	SW	STONE WALL
CKKG	CONCRETE KERB & GUTTER	TS	TIMBER SHED
CSP	CONCRETE SLAB	TSAT	TIMBER SEAT & TABLE
CS	CONCRETE SHOWER POST	TSR	TIMBER SHELTER WITH METAL ROOF
CW	CONCRETE WALL	TSR	TIMBER SHELTER WITH METAL ROOF
EFL	EMERGENCY FLOOR LEVEL	TSR	TIMBER SHED
ERB	EMERGENCY RESCUE BUOY	TSR	TIMBER SHED
KLPR	KOPERS LOG POST & RAIL FENCE	TSR	TIMBER SHED
MB	METAL BOLLARD	TSR	TIMBER SHED
MBP	METAL BIN STAND	TSR	TIMBER SHED
MBS	METAL BENCH SEAT	TSR	TIMBER SHED
MQ3	METAL BOLLARD SQUARE	TSR	TIMBER SHED
MF	METAL FENCE	TWL	TIMBER WALL



LEVEL & DETAIL SURVEY OF SECTIONS 1, 2 & 3 FRESHWATER BEACH, FRESHWATER

BYRNE & ASSOCIATES PTY LIMITED
CONSULTING SURVEYORS & ENGINEERS
63 WATERLOO STREET
MARRAHEEN 2101
Ph: (02) 9913 7110 Fax: (02) 9913 1583
Email: survey@byrneandassociates.com.au

ISSUE	DESCRIPTION	DATE
A	INITIAL	22/11/16
B	ADDITIONAL DETAIL ADDED TO PLAN	3/02/17

Drawn by: [Name] Checked by: [Name] Approved by: [Name]
Date of November 2016
Scale: 1:3
Plan No. A1 - 1083702

LEGEND SERVICES

OP	COMMUNICATION PIT	PRB	PUBLIC PHONE BOOTH
OPML	CONCRETE PIT WITH METAL LID	PSK	POWER POLE
EB	ELECTRICITY BOX	SAC	SEWER STATION KIOSK
EK	ELECTRICITY KIOSK	SIP	SEWER INSPECTION CHAMBER
EP	ELECTRICITY PIT	SL	SPOT LIGHT
FH	FIRE HYDRANT	SV	STOP VALVE
H	HYDRANT	SVP	STOP VENT PIPE
HIP	HEXAGONAL LIGHT POLE	TAP	TAP
LD1	TIMBER LIGHT POST 0.34	TP	TELSTRA PIT
LD2	METAL LIGHT POST 0.24	USB	UNKNOWN SERVICE BOX
LD2P	METAL LIGHT POST 0.24	WMC	WATER METER
MCP	METAL COMMUNICATION POST 0.074	WV	WATER METER CASE
MSC	METAL SERVICE CUPBOARD		WATER VALVE

NOTE:

- LEVELS SHOWN THUS $+^{150}$ ARE BASED ON AUSTRALIAN HEIGHT DATUM
- ORIGIN OF LEVELS - PW 20911 R.L.13.49 A.H.D. SEE SHEET 4 FOR LOCATION
- LEVELS SHOWN THUS ABT.13.9 HAVE BEEN DETERMINED BY REMOTE METHODS AND ARE ACCURATE TO +/- 100mm
- NO BOUNDARY INVESTIGATION HAS BEEN CARRIED OUT AND THEREFORE THIS PLAN DOES NOT DEFINE BOUNDARIES.
- DO NOT SCALE - USE FIGURED BEARINGS & DISTANCES ONLY
- CONTOURS ARE AT 0.5 METRE INTERVALS AND ARE APPROXIMATE ONLY. SPOT LEVELS SHOULD BE USED IN PREFERENCE TO CONTOUR VALUES.
- BASIC LEVEL AND DETAIL SURVEY ONLY - UNLESS OTHERWISE SHOWN, THE POSITION OF IMPROVEMENTS ARE APPROXIMATE. THE INFORMATION SHOWN HEREON IS ONLY TO BE USED AT AN ACCURACY OF 1:200
- THE DIAMETERS, SPREAD AND HEIGHT OF ALL TREES ARE ESTIMATES ONLY. IF THEY ARE CRITICAL TO DESIGN THEN A MORE ACCURATE SURVEY WOULD BE REQUIRED.
- FEATURES & LEVELS CRITICAL TO DESIGN SHOULD BE LOCATED BY A MORE ACCURATE SURVEY
- ALL SET OUT WITH REGARD TO LEVELS SHOULD BE REFERRED TO THE BENCH MARK
- OTHER THAN THE POSITION OF OVERHEAD ELECTRICITY CABLES NO OTHER SERVICE AUTHORITY SERVICE LINES HAVE BEEN PLOTTED. THIS IS DUE TO THE LACK OF INFORMATION ON SITE THAT WOULD ASSIST IN PLOTTING THE POSITION OF THE SERVICE LINES. (REFER TO NOTE 12).
- EXISTING SERVICES MAY IMPACT ON DESIGN/CONSTRUCTION - IT IS ADVISED THAT A COMPREHENSIVE SERVICES SEARCH BE CARRIED OUT PRIOR TO COMMENCEMENT OF DESIGN/CONSTRUCTION REFER TO SHEET 4 FOR DETAILS ON THIS PLAN
- ORIGIN OF THE NORTH POINT IS THE MGA CO-ORDINATES OF P.M.20911 & S.M.779.

— P — DENOTES APPROXIMATE POSITION OF ABOVE GROUND ELECTRICITY CABLES AS LOCATED BY SURVEY

LEGEND FURNITURE ETC.

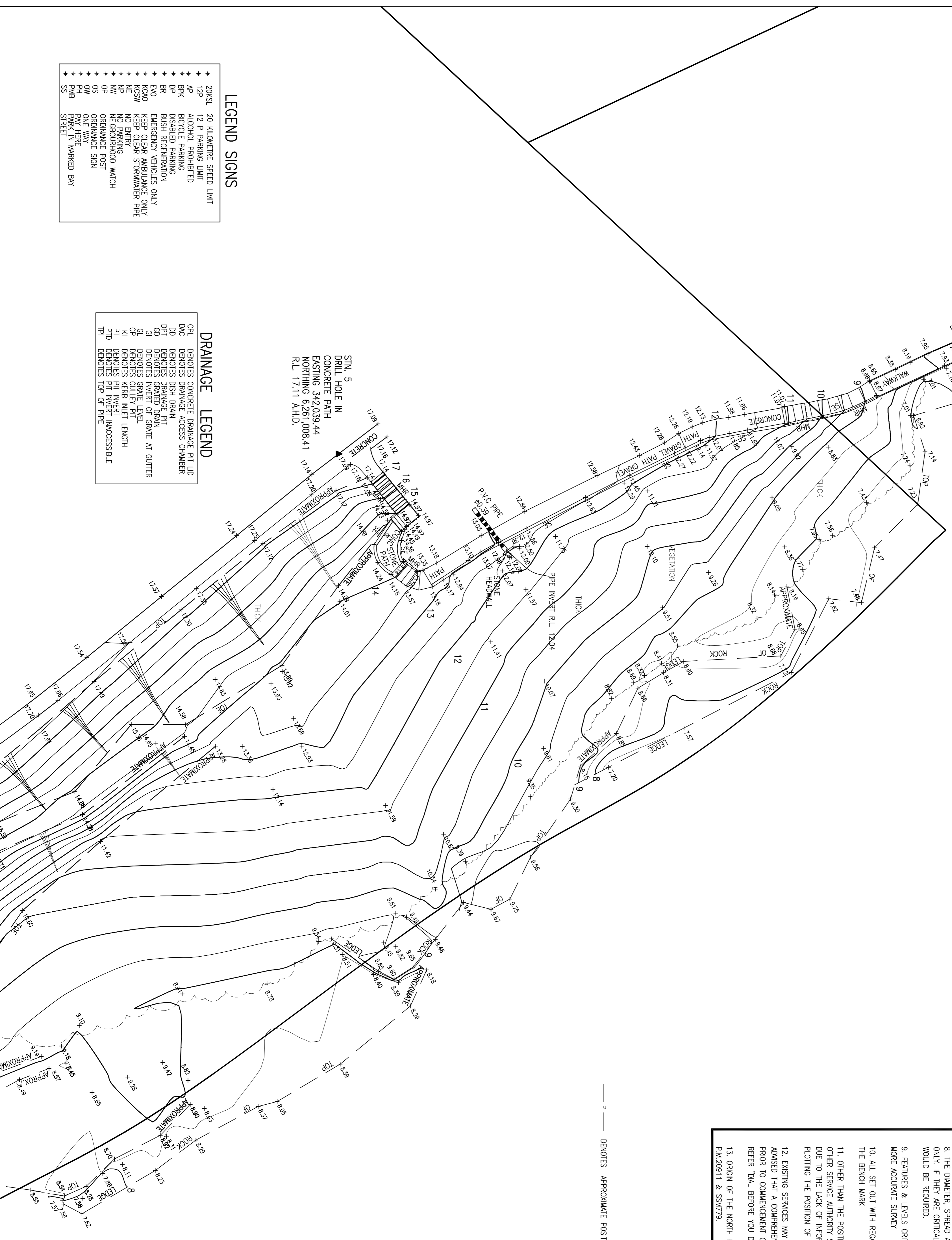
ATOB	APPROXIMATE TOP OF BANK	MGB	METAL GARBAGE BIN
B1	APPROXIMATE TOP OF BANK	MHR	METAL HAND RAIL
B2	TIMBER BOLLARD 0.15	MP	METAL POST
B3	TIMBER BOLLARD 0.34	MON	MONUMENT
BBOE	BARBECUE (ELECTRIC)	MS	METAL SEAT
BES	BRICK EDGE STRIP	MSAT	METAL SEAT & TABLE
BPA	BRICK PAVED AREA	MSP	METAL SHOWER POST
BO	TIMBER BOLLARD 0.1 SQUARE	PE	PLAYGROUND EQUIPMENT
BR	BRICK WALL	PC	PRAM CROSSING
BLUB	BUBBLER	PD	PARKING TICKET DISPENSER
CD	CONCRETE DRIVE	RF	ROCK FEATURE
CE	CONCRETE EDGE STRIP	SE	STONE EDDING
CFP	CONCRETE PATH	SP	STONE PATH
CHW	CONCRETE HEAD WALL	SP1	STEEL POST 0.074
CKAG	CONCRETE KERB & GUTTER	SPL	SPRINKLER
CSP	CONCRETE SHOWER POST	SNW	SIGHT IMPAIRED RIPPLE MAT
CS	CONCRETE SLAB	SW	STONE WALL
EW	ENTRANCE FLOOR LEVEL	THR	TIMBER HAND RAIL
EFL	ENTRANCE FLOOR LEVEL	TSAT	TIMBER SEAT & TABLE
ERB	EMERGENCY RESCUE BUOY	TSR	TIMBER SHELTER WITH METAL ROOF
KLPR	KOPPEERS LOG POST & RAIL FENCE	TSR	TIMBER SHELTER WITH METAL ROOF
MB	METAL BOLLARD	TSR	TIMBER SHELTER WITH METAL ROOF
MBS	METAL BIN STAND	TSR	TIMBER SHELTER WITH METAL ROOF
MBS	METAL BENCH STAND	TSR	TIMBER SHELTER WITH METAL ROOF
MBS	METAL BOLLARD SQUARE	TSL	TIMBER SHINGLE ROOF
MFB	METAL BENCH SQUARE	TSL	TIMBER SHINGLE ROOF
MFB	METAL BENCH SQUARE	TSL	TIMBER SHINGLE ROOF
MFB	METAL BENCH SQUARE	TSL	TIMBER SHINGLE ROOF

LEGEND SIGNS

20KSL	20 KILOMETRE SPEED LIMIT
12P	12 P PARKING LIMIT
AP	ALCOHOL PROHIBITED
BP	BICYCLE PARKING
BR	BUSH REGENERATION
DP	DISABLED PARKING
EVO	EMERGENCY VEHICLES ONLY
KAO	KEEP CLEAR AVOIDANCE ONLY
KCSW	KEEP CLEAR STORMWATER PIPE
NE	NO PARKING
NW	NO PARKING
OP	ORDNANCE POST
OS	ORDNANCE SIGN
OW	ONE WAY
PH	PAY HERE
PHB	PAY HERE
SS	STREET MARKED BAY

DRAINAGE LEGEND

CPL	DENOTES CONCRETE DRAINAGE PIT LID
DAC	DENOTES DRAINAGE ACCESS CHAMBER
DD	DENOTES DISH DRAIN
DPT	DENOTES DRAINAGE PIT
GD	DENOTES GRAVED DRAIN
G	DENOTES GREAT LEAF
GP	DENOTES GULLY PIT
KI	DENOTES KERB INLET LENGTH
PT	DENOTES PIT INVERT UNACCESSIBLE
PTD	DENOTES PIT INVERT ACCESSIBLE
TH	DENOTES TOP OF PIPE



DATE OF ISSUE: 22/11/16

DATE OF REVISION: 22/11/16

ISSUE: 1

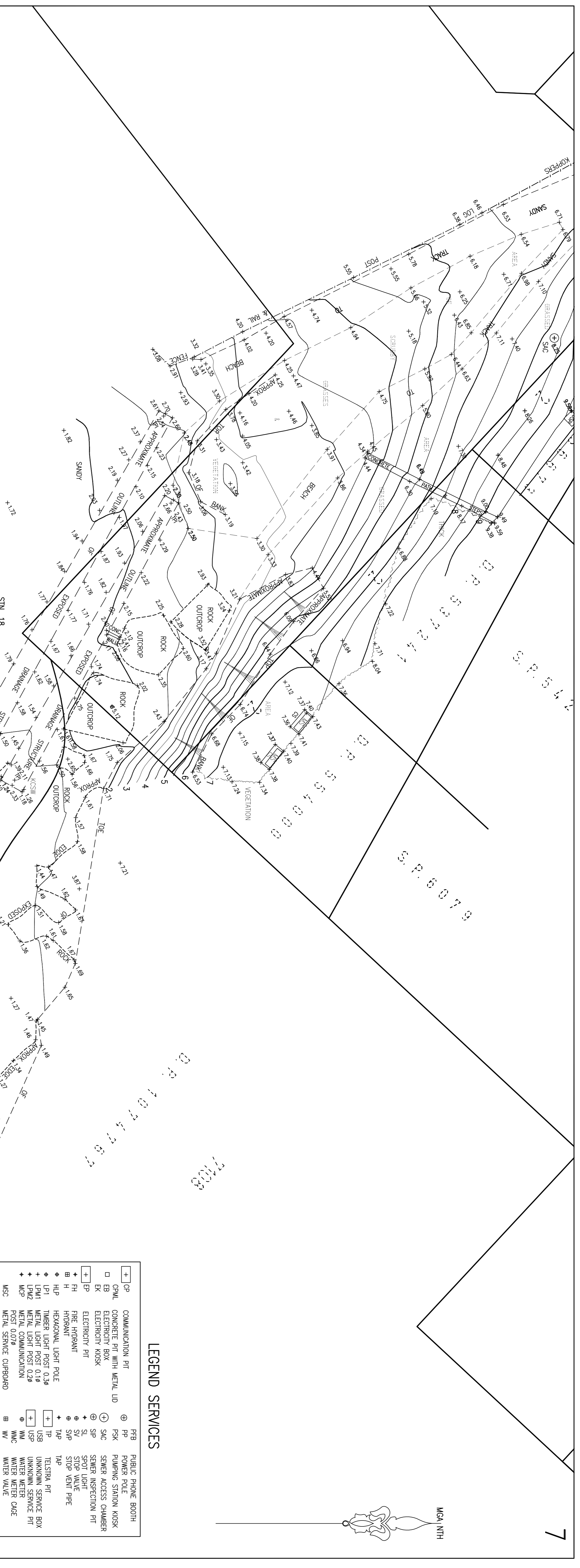
ISSUES:

BYRNE & ASSOCIATES PTY LIMITED
CONSULTING SURVEYORS & ENGINEERS
63 WATERLOO STREET
MARRABEEEN 2101
Ph: (02) 9913 7110 Acn: 602 593 585 Fax: (02) 9913 1533
Email: survey@byrnedassociates.com.au

LEVEL & DETAIL SURVEY OF
SECTIONS 1, 2 & 3
FRESHWATER BEACH,
FRESHWATER

DATE	12/03/2016	BY	1:3	CHKD	1:200
DATE	22/11/16	BY	1:3	CHKD	1:200

Plan No. A1 - 1083702



NOTE:

1. LEVELS SHOWN THIS +13.3 ARE BASED ON AUSTRALIAN HEIGHT DATUM
2. ORIGIN OF LEVELS - PM 20911 R.L.13.49 A.H.D. SEE SHEET 4 FOR LOCATION
3. LEVELS SHOWN THIS APT.13.9 HAVE BEEN DETERMINED BY REMOTE METHODS AND ARE ACCURATE TO +/- 100mm
4. NO BOUNDARY INVESTIGATION HAS BEEN CARRIED OUT AND THEREFORE THIS PLAN DOES NOT DEFINE BOUNDARIES.
5. DO NOT SCALE - USE FIGURED BEARINGS & DISTANCES ONLY
6. CONTOURS ARE AT 0.5 METRE INTERVALS AND ARE APPROXIMATE ONLY. SPOT LEVELS SHOULD BE USED IN PREFERENCE TO CONTOUR VALUES.
7. BASIC LEVEL AND DETAIL SURVEY ONLY - UNLESS OTHERWISE SHOWN, THE POSITION OF IMPROVEMENTS ARE APPROXIMATE. THE INFORMATION SHOWN HEREON IS ONLY TO BE USED AT AN ACCURACY OF 1:200
8. THE DIAMETER, SPREAD AND HEIGHT OF ALL TREES ARE ESTIMATES ONLY. IF THEY ARE CRITICAL TO DESIGN THEN A MORE ACCURATE SURVEY WOULD BE REQUIRED.
9. FEATURES & LEVELS CRITICAL TO DESIGN SHOULD BE LOCATED BY A MORE ACCURATE SURVEY
10. ALL SET OUT WITH REGARD TO LEVELS SHOULD BE REFERRED TO THE BENCH MARK
11. OTHER THAN THE POSITION OF OVERHEAD ELECTRICITY CABLES NO OTHER SERVICE AUTHORITY SERVICE LINES HAVE BEEN PLOTTED. THIS IS DUE TO THE LACK OF INFORMATION ON SITE THAT WOULD ASSIST IN PLOTTING THE POSITION OF THE SERVICE LINES. (REFER TO NOTE 12).
12. EXISTING SERVICES MAY IMPACT ON DESIGN/CONSTRUCTION - IT IS ADVISED THAT A COMPREHENSIVE SERVICES SEARCH BE CARRIED OUT PRIOR TO COMMENCEMENT OF DESIGN/CONSTRUCTION REFER TOAL BEFORE YOU GO' DETAILS ON THIS PLAN
13. ORIGIN OF THE NORTH POINT IS THE MGA CO-ORIGINATES OF P.M.20911 & SSM79.

FRESHWATER BEACH

STN 18
DRILL HOLE & WING
IN ROCK
EASTING 341,876.15
NORTHING 6,260,866.50
R.L. 172 A.H.D.

LEGEND FURNITURE ETC.

AT0B	APPROXIMATE TOP OF BANK	MGB	METAL GARBAGE BIN
AD0B	APPROXIMATE TOE OF BANK	MHR	METAL HAND RAIL
B1	TIMBER BOLLARD 0.18	MPI	METAL POST
B2	TIMBER BOLLARD 0.28	MON	MONUMENT
B3	TIMBER BOLLARD 0.38	MST	METAL SEAT
BES	BRICK EDGE STRIP	MSP	METAL SEAT & TABLE
BEP	BRICK PAVED	PE	PLAYGROUND EQUIPMENT
BPA	BRICK PAVED AREA	PC	PRAM CROSSING
BPB	BRICK PAVED	PTD	PARKING TICKET DISPENSER
BPC	BRICK PAVED	RKT	ROCK FEATURE
BPD	BRICK PAVED	SE	STONE EDGING
BPE	BRICK PAVED	SF	STONE PAVIN
BPF	BRICK PAVED	SPI	STEEL PAVIN 0.079
BPG	BRICK PAVED	SPT	STEEL PAVIN 0.129
BPH	BRICK PAVED	SRM	STONE WALL
BPI	BRICK PAVED	SW	STONE WALL
BPJ	BRICK PAVED	TF	TIMBER FENCE
BPK	BRICK PAVED	THR	TIMBER HAND RAIL
BPL	BRICK PAVED	TSR	TIMBER SEAT
BPM	BRICK PAVED	TSAT	TIMBER SEAT & TABLE
BPN	BRICK PAVED	TSAR	TIMBER SHELTER WITH METAL ROOF
BPO	BRICK PAVED	TSR	TIMBER SHELTER WITH METAL ROOF
BPP	BRICK PAVED	TSR	TIMBER SHELTER WITH METAL ROOF
BPT	BRICK PAVED	TSR	TIMBER SHELTER WITH METAL ROOF
BPU	BRICK PAVED	TSR	TIMBER SHELTER WITH METAL ROOF
BPV	BRICK PAVED	TSR	TIMBER SHELTER WITH METAL ROOF
BPW	BRICK PAVED	TSR	TIMBER SHELTER WITH METAL ROOF
BPX	BRICK PAVED	TSR	TIMBER SHELTER WITH METAL ROOF
BPY	BRICK PAVED	TSR	TIMBER SHELTER WITH METAL ROOF
BPZ	BRICK PAVED	TSR	TIMBER SHELTER WITH METAL ROOF
BQA	BRICK PAVED	TSR	TIMBER SHELTER WITH METAL ROOF
BQB	BRICK PAVED	TSR	TIMBER SHELTER WITH METAL ROOF
BQC	BRICK PAVED	TSR	TIMBER SHELTER WITH METAL ROOF
BQD	BRICK PAVED	TSR	TIMBER SHELTER WITH METAL ROOF
BQE	BRICK PAVED	TSR	TIMBER SHELTER WITH METAL ROOF
BQF	BRICK PAVED	TSR	TIMBER SHELTER WITH METAL ROOF
BQG	BRICK PAVED	TSR	TIMBER SHELTER WITH METAL ROOF
BQH	BRICK PAVED	TSR	TIMBER SHELTER WITH METAL ROOF
BQI	BRICK PAVED	TSR	TIMBER SHELTER WITH METAL ROOF
BQJ	BRICK PAVED	TSR	TIMBER SHELTER WITH METAL ROOF
BQK	BRICK PAVED	TSR	TIMBER SHELTER WITH METAL ROOF
BQL	BRICK PAVED	TSR	TIMBER SHELTER WITH METAL ROOF
BQM	BRICK PAVED	TSR	TIMBER SHELTER WITH METAL ROOF
BQN	BRICK PAVED	TSR	TIMBER SHELTER WITH METAL ROOF
BQO	BRICK PAVED	TSR	TIMBER SHELTER WITH METAL ROOF
BQP	BRICK PAVED	TSR	TIMBER SHELTER WITH METAL ROOF
BQQ	BRICK PAVED	TSR	TIMBER SHELTER WITH METAL ROOF
BQR	BRICK PAVED	TSR	TIMBER SHELTER WITH METAL ROOF
BQS	BRICK PAVED	TSR	TIMBER SHELTER WITH METAL ROOF
BQT	BRICK PAVED	TSR	TIMBER SHELTER WITH METAL ROOF
BQU	BRICK PAVED	TSR	TIMBER SHELTER WITH METAL ROOF
BQV	BRICK PAVED	TSR	TIMBER SHELTER WITH METAL ROOF
BQW	BRICK PAVED	TSR	TIMBER SHELTER WITH METAL ROOF
BQX	BRICK PAVED	TSR	TIMBER SHELTER WITH METAL ROOF
BQY	BRICK PAVED	TSR	TIMBER SHELTER WITH METAL ROOF
BQZ	BRICK PAVED	TSR	TIMBER SHELTER WITH METAL ROOF
BRA	BRICK PAVED	TSR	TIMBER SHELTER WITH METAL ROOF
BRB	BRICK PAVED	TSR	TIMBER SHELTER WITH METAL ROOF
BRC	BRICK PAVED	TSR	TIMBER SHELTER WITH METAL ROOF
BRD	BRICK PAVED	TSR	TIMBER SHELTER WITH METAL ROOF
BRE	BRICK PAVED	TSR	TIMBER SHELTER WITH METAL ROOF
BRF	BRICK PAVED	TSR	TIMBER SHELTER WITH METAL ROOF
BRG	BRICK PAVED	TSR	TIMBER SHELTER WITH METAL ROOF
BRH	BRICK PAVED	TSR	TIMBER SHELTER WITH METAL ROOF
BRJ	BRICK PAVED	TSR	TIMBER SHELTER WITH METAL ROOF
BRK	BRICK PAVED	TSR	TIMBER SHELTER WITH METAL ROOF
BRM	BRICK PAVED	TSR	TIMBER SHELTER WITH METAL ROOF
BRN	BRICK PAVED	TSR	TIMBER SHELTER WITH METAL ROOF
BRP	BRICK PAVED	TSR	TIMBER SHELTER WITH METAL ROOF
BRQ	BRICK PAVED	TSR	TIMBER SHELTER WITH METAL ROOF
BRR	BRICK PAVED	TSR	TIMBER SHELTER WITH METAL ROOF
BRV	BRICK PAVED	TSR	TIMBER SHELTER WITH METAL ROOF
BRW	BRICK PAVED	TSR	TIMBER SHELTER WITH METAL ROOF
BRX	BRICK PAVED	TSR	TIMBER SHELTER WITH METAL ROOF
BRZ	BRICK PAVED	TSR	TIMBER SHELTER WITH METAL ROOF
BRA	BRICK PAVED	TSR	TIMBER SHELTER WITH METAL ROOF
BRB	BRICK PAVED	TSR	TIMBER SHELTER WITH METAL ROOF
BRC	BRICK PAVED	TSR	TIMBER SHELTER WITH METAL ROOF
BRD	BRICK PAVED	TSR	TIMBER SHELTER WITH METAL ROOF
BRE	BRICK PAVED	TSR	TIMBER SHELTER WITH METAL ROOF
BRF	BRICK PAVED	TSR	TIMBER SHELTER WITH METAL ROOF
BRG	BRICK PAVED	TSR	TIMBER SHELTER WITH METAL ROOF
BRH	BRICK PAVED	TSR	TIMBER SHELTER WITH METAL ROOF
BRJ	BRICK PAVED	TSR	TIMBER SHELTER WITH METAL ROOF
BRK	BRICK PAVED	TSR	TIMBER SHELTER WITH METAL ROOF
BRM	BRICK PAVED	TSR	TIMBER SHELTER WITH METAL ROOF
BRN	BRICK PAVED	TSR	TIMBER SHELTER WITH METAL ROOF
BRP	BRICK PAVED	TSR	TIMBER SHELTER WITH METAL ROOF
BRQ	BRICK PAVED	TSR	TIMBER SHELTER WITH METAL ROOF
BRR	BRICK PAVED	TSR	TIMBER SHELTER WITH METAL ROOF
BRV	BRICK PAVED	TSR	TIMBER SHELTER WITH METAL ROOF
BRW	BRICK PAVED	TSR	TIMBER SHELTER WITH METAL ROOF
BRX	BRICK PAVED	TSR	TIMBER SHELTER WITH METAL ROOF
BRZ	BRICK PAVED	TSR	TIMBER SHELTER WITH METAL ROOF
BRA	BRICK PAVED	TSR	TIMBER SHELTER WITH METAL ROOF
BRB	BRICK PAVED	TSR	TIMBER SHELTER WITH METAL ROOF
BRC	BRICK PAVED	TSR	TIMBER SHELTER WITH METAL ROOF
BRD	BRICK PAVED	TSR	TIMBER SHELTER WITH METAL ROOF
BRE	BRICK PAVED	TSR	TIMBER SHELTER WITH METAL ROOF
BRF	BRICK PAVED	TSR	TIMBER SHELTER WITH METAL ROOF
BRG	BRICK PAVED	TSR	TIMBER SHELTER WITH METAL ROOF
BRH	BRICK PAVED	TSR	TIMBER SHELTER WITH METAL ROOF
BRJ	BRICK PAVED	TSR	TIMBER SHELTER WITH METAL ROOF
BRK	BRICK PAVED	TSR	TIMBER SHELTER WITH METAL ROOF
BRM	BRICK PAVED	TSR	TIMBER SHELTER WITH METAL ROOF
BRN	BRICK PAVED	TSR	TIMBER SHELTER WITH METAL ROOF
BRP	BRICK PAVED	TSR	TIMBER SHELTER WITH METAL ROOF
BRQ	BRICK PAVED	TSR	TIMBER SHELTER WITH METAL ROOF
BRR	BRICK PAVED	TSR	TIMBER SHELTER WITH METAL ROOF
BRV	BRICK PAVED	TSR	TIMBER SHELTER WITH METAL ROOF
BRW	BRICK PAVED	TSR	TIMBER SHELTER WITH METAL ROOF
BRX	BRICK PAVED	TSR	TIMBER SHELTER WITH METAL ROOF
BRZ	BRICK PAVED	TSR	TIMBER SHELTER WITH METAL ROOF
BRA	BRICK PAVED	TSR	TIMBER SHELTER WITH METAL ROOF
BRB	BRICK PAVED	TSR	TIMBER SHELTER WITH METAL ROOF
BRC	BRICK PAVED	TSR	TIMBER SHELTER WITH METAL ROOF
BRD	BRICK PAVED	TSR	TIMBER SHELTER WITH METAL ROOF
BRE	BRICK PAVED	TSR	TIMBER SHELTER WITH METAL ROOF
BRF	BRICK PAVED	TSR	TIMBER SHELTER WITH METAL ROOF
BRG	BRICK PAVED	TSR	TIMBER SHELTER WITH METAL ROOF
BRH	BRICK PAVED	TSR	TIMBER SHELTER WITH METAL ROOF
BRJ	BRICK PAVED	TSR	TIMBER SHELTER WITH METAL ROOF
BRK	BRICK PAVED	TSR	TIMBER SHELTER WITH METAL ROOF
BRM	BRICK PAVED	TSR	TIMBER SHELTER WITH METAL ROOF
BRN	BRICK PAVED	TSR	TIMBER SHELTER WITH METAL ROOF
BRP	BRICK PAVED	TSR	TIMBER SHELTER WITH METAL ROOF
BRQ	BRICK PAVED	TSR	TIMBER SHELTER WITH METAL ROOF
BRR	BRICK PAVED	TSR	TIMBER SHELTER WITH METAL ROOF
BRV	BRICK PAVED	TSR	TIMBER SHELTER WITH METAL ROOF
BRW	BRICK PAVED	TSR	TIMBER SHELTER WITH METAL ROOF
BRX	BRICK PAVED	TSR	TIMBER SHELTER WITH METAL ROOF
BRZ	BRICK PAVED	TSR	TIMBER SHELTER WITH METAL ROOF
BRA	BRICK PAVED	TSR	TIMBER SHELTER WITH METAL ROOF
BRB	BRICK PAVED	TSR	TIMBER SHELTER WITH METAL ROOF
BRC	BRICK PAVED	TSR	TIMBER SHELTER WITH METAL ROOF
BRD	BRICK PAVED	TSR	TIMBER SHELTER WITH METAL ROOF
BRE	BRICK PAVED	TSR	TIMBER SHELTER WITH METAL ROOF
BRF	BRICK PAVED	TSR	TIMBER SHELTER WITH METAL ROOF
BRG	BRICK PAVED	TSR	TIMBER SHELTER WITH METAL ROOF
BRH	BRICK PAVED	TSR	TIMBER SHELTER WITH METAL ROOF
BRJ	BRICK PAVED	TSR	TIMBER SHELTER WITH METAL ROOF
BRK	BRICK PAVED	TSR	TIMBER SHELTER WITH METAL ROOF
BRM	BRICK PAVED	TSR	TIMBER SHELTER WITH METAL ROOF
BRN	BRICK PAVED	TSR	TIMBER SHELTER WITH METAL ROOF
BRP	BRICK PAVED	TSR	TIMBER SHELTER WITH METAL ROOF
BRQ	BRICK PAVED	TSR	TIMBER SHELTER WITH METAL ROOF
BRR	BRICK PAVED	TSR	TIMBER SHELTER WITH METAL ROOF
BRV	BRICK PAVED	TSR	TIMBER SHELTER WITH METAL ROOF
BRW	BRICK PAVED	TSR	TIMBER SHELTER WITH METAL ROOF
BRX	BRICK PAVED	TSR	TIMBER SHELTER WITH METAL ROOF
BRZ	BRICK PAVED	TSR	TIMBER SHELTER WITH METAL ROOF
BRA	BRICK PAVED	TSR	TIMBER SHELTER WITH METAL ROOF
BRB	BRICK PAVED	TSR	TIMBER SHELTER WITH METAL ROOF
BRC	BRICK PAVED	TSR	TIMBER SHELTER WITH METAL ROOF
BRD	BRICK PAVED	TSR	TIMBER SHELTER WITH METAL ROOF
BRE	BRICK PAVED	TSR	TIMBER SHELTER WITH METAL ROOF
BRF	BRICK PAVED	TSR	TIMBER SHELTER WITH METAL ROOF
BRG	BRICK PAVED	TSR	TIMBER SHELTER WITH METAL ROOF
BRH	BRICK PAVED	TSR	TIMBER SHELTER WITH METAL ROOF
BRJ	BRICK PAVED	TSR	TIMBER SHELTER WITH METAL ROOF
BRK	BRICK PAVED	TSR	TIMBER SHELTER WITH METAL ROOF
BRM	BRICK PAVED	TSR	TIMBER SHELTER WITH METAL ROOF
BRN	BRICK PAVED	TSR	TIMBER SHELTER WITH METAL ROOF
BRP	BRICK PAVED	TSR	TIMBER SHELTER WITH METAL ROOF
BRQ	BRICK PAVED	TSR	TIMBER SHELTER WITH METAL ROOF
BRR	BRICK PAVED	TSR	TIMBER SHELTER WITH METAL ROOF
BRV	BRICK PAVED	TSR	TIMBER SHELTER WITH METAL ROOF
BRW	BRICK PAVED	TSR	TIMBER SHELTER WITH METAL ROOF
BRX	BRICK PAVED	TSR	TIMBER SHELTER WITH METAL ROOF
BRZ	BRICK PAVED	TSR	TIMBER SHELTER WITH METAL ROOF
BRA	BRICK PAVED	TSR	TIMBER SHELTER WITH METAL ROOF
BRB	BRICK PAVED	TSR	TIMBER SHELTER WITH METAL ROOF
BRC	BRICK PAVED	TSR	TIMBER SHELTER WITH METAL ROOF
BRD	BRICK PAVED	TSR	TIMBER SHELTER WITH METAL ROOF
BRE	BRICK PAVED	TSR	TIMBER SHELTER WITH METAL ROOF
BRF	BRICK PAVED	TSR	TIMBER SHELTER WITH METAL ROOF
BRG	BRICK PAVED	TSR	TIMBER SHELTER WITH METAL ROOF
BRH	BRICK PAVED	TSR	TIMBER SHELTER WITH METAL ROOF
BRJ	BRICK PAVED	TSR	TIMBER SHELTER WITH METAL ROOF
BRK	BRICK PAVED	TSR	TIMBER SHELTER WITH METAL ROOF
BRM	BRICK PAVED	TSR	TIMBER SHELTER WITH METAL ROOF
BRN	BRICK PAVED	TSR	TIMBER SHELTER WITH METAL ROOF
BRP	BRICK PAVED	TSR	TIMBER SHELTER WITH METAL ROOF
BRQ	BRICK PAVED	TSR	TIMBER SHELTER WITH METAL ROOF
BRR	BRICK PAVED	TSR	TIMBER SHELTER WITH METAL ROOF
BRV	BRICK PAVED	TSR	TIMBER SHELTER WITH METAL ROOF
BRW	BRICK PAVED	TSR	TIMBER SHELTER WITH METAL ROOF
BRX	BRICK PAVED	TSR	TIMBER SHELTER WITH METAL ROOF
BRZ	BRICK PAVED	TSR	TIMBER SHELTER WITH METAL ROOF
BRA	BRICK PAVED	TSR	TIMBER SHELTER WITH METAL ROOF
BRB	BRICK PAVED	TSR	TIMBER SHELTER WITH METAL ROOF
BRC	BRICK PAVED	TSR	TIMBER SHELTER WITH METAL ROOF
BRD	BRICK PAVED	TSR	TIMBER SHELTER WITH METAL ROOF
BRE	BRICK PAVED	TSR	TIMBER SHELTER WITH METAL ROOF
BRF	BRICK PAVED	TSR	TIMBER SHELTER WITH METAL ROOF
BRG	BRICK PAVED	TSR	TIMBER SHELTER WITH METAL ROOF
BRH	BRICK PAVED	TSR	TIMBER SHELTER WITH METAL ROOF
BRJ	BRICK PAVED	TSR	TIMBER SHELTER WITH METAL ROOF
BRK	BRICK PAVED	TSR	TIMBER SHELTER WITH METAL ROOF
BRM	BRICK PAVED	TSR	TIMBER SHELTER WITH METAL ROOF
BRN	BRICK PAVED	TSR	TIMBER SHELTER WITH METAL ROOF
BRP	BRICK PAVED	TSR	TIMBER SHELTER WITH METAL ROOF
BRQ	BRICK PAVED	TSR	TIMBER SHELTER WITH METAL ROOF
BRR	BRICK PAVED	TSR	TIMBER SHELTER WITH METAL ROOF
BRV	BRICK PAVED	TSR	TIMBER SHELTER WITH METAL ROOF
BRW	BRICK PAVED	TSR	TIMBER SHELTER WITH METAL ROOF
BRX	BRICK PAVED	TSR	TIMBER SHELTER WITH METAL ROOF
BRZ	BRICK PAVED	TSR	TIMBER SHELTER WITH METAL ROOF
BRA	BRICK PAVED	TSR	TIMBER SHELTER WITH METAL ROOF
BRB	BRICK PAVED	TSR	TIMBER SHELTER WITH METAL ROOF
BRC	BRICK PAVED	TSR	TIMBER SHELTER WITH METAL ROOF
BRD	BRICK PAVED	TSR	TIMBER SHELTER WITH METAL ROOF
BRE	BRICK PAVED	TSR	TIMBER SHELTER WITH METAL ROOF
BRF	BRICK PAVED	TSR	TIMBER SHELTER WITH METAL ROOF
BRG	BRICK PAVED	TSR	TIMBER SHELTER WITH METAL ROOF
BRH	BRICK PAVED	TSR	TIMBER SHELTER WITH METAL ROOF
BRJ	BRICK PAVED	TSR	TIMBER SHELTER WITH METAL ROOF
BRK	BRICK PAVED	TSR	TIMBER SHELTER WITH METAL ROOF
BRM	BRICK PAVED	TSR	TIMBER SHELTER WITH METAL ROOF
BRN	BRICK PAVED	TSR	TIMBER SHELTER WITH METAL ROOF
BRP	BRICK PAVED	TSR	TIMBER SHELTER WITH METAL ROOF
BRQ	BRICK PAVED	TSR	TIMBER SHELTER WITH METAL ROOF
BRR	BRICK PAVED	TSR	TIMBER SHELTER WITH METAL ROOF
BRV	BRICK PAVED	TSR	TIMBER SHELTER WITH METAL ROOF
BRW	BRICK PAVED	TSR	TIMBER SHELTER WITH METAL ROOF
BRX	BRICK PAVED	TSR	TIMBER SHELTER WITH METAL ROOF
BRZ	BRICK PAVED	TSR	TIMBER SHELTER WITH METAL ROOF
BRA	BRICK PAVED	TSR	TIMBER SHELTER WITH METAL ROOF
BRB	BRICK PAVED	TSR	TIMBER SHELTER WITH METAL ROOF
BRC	BRICK PAVED	TSR	TIMBER SHELTER WITH METAL ROOF
BRD	BRICK PAVED	TSR	TIMBER SHELTER WITH METAL ROOF
BRE	BRICK PAVED	TSR	TIMBER SHELTER WITH METAL ROOF
BRF	BRICK PAVED	TSR	TIMBER SHELTER WITH METAL ROOF
BRG	BRICK PAVED	TSR	TIMBER SHELTER WITH METAL ROOF
BR			

LEGEND FURNITURE ETC. — P — DENOTES APPROXIMATE POSITION OF ABOVE GROUND ELECTRICITY CABLES AS LOCATED BY SURVEY

MOA NTH	MOA NTH
ATOB APPROXIMATE TOP OF BANK	MCB METAL GARAGE RM
B1 TIMBER BOLLARD 0.19	MHR METAL HAND RAIL
B2 TIMBER BOLLARD 0.29	MON MONUMENT
BBE BARBECUE (ELECTRIC)	MSA METAL SEAT
BES BRICK EDGE STRIP	MSAT METAL SEAT & TABLE
BPA BRICK PAVED AREA	MSP METAL SHOWER POST
BQ TIMBER BOLLARD 0.1 SQUARE	PE PLAYGROUND EQUIPMENT
BR BUBBLER	PC PRAM CROSSING
BW BRICK WALL	PKF PARKING TICKET DISPENSER
CD CONCRETE DRIVE	RFD ROCK FEATURE
CS CONCRETE EDGE STRIP	SE STONE EDGINGS
CPH CONCRETE PATH	SP1 STONE PAVEN 0.078
CKAG CONCRETE KERB & GUTTER	SP2 SIGHT IMPAIRED RIPPLE MAT
CKM CONCRETE KERB	SW STONE WALL
CP CONCRETE WALKER POST	TF TIMBER FENCE
ETL ENTRANCE FLOOR LEVEL	THR TIMBER HAND RAIL
EBR EMERGENCY RESCUE BUY	TS TIMBER SEAT
KPR KOPPELERS LOG POST & PAUL FENCE	TSAT TIMBER SEAT & TABLE
MHR METAL HAND RAIL	TMSH TIMBER SHELTER WITH METAL ROOF
MB METAL BOLLARD	TSR TIMBER SHINGLE ROOF
MBS METAL BOLLARD SEAT	TSM TIMBER SHINGLE ROOF
MFS METAL BOLLARD SQUARE	TTL TIMBER WALL
MF METAL FENCE	

LEGEND SERVICES

CP COMMUNICATION PIT	FPB PUBLIC PHONE BOOTH
CPML CONCRETE PIT WITH METAL LID	PP POWER POLE
EB ELECTRICITY BOX	PSK PLANNING STATION KIOSK
EK ELECTRICITY KIOSK	SAC SEWER ACCESS CHAMBER
EP ELECTRICITY PIT	SL SEWER INSPECTION PIT
FH FIRE HYDRANT	SLV SPOT LIGHT
H HYDRANT	SV STOP VALVE
HHP HEXAGONAL LIGHT POLE	TAP STOP WENT PIPE
LP1 TIMBER LIGHT POST 0.34	TELSTRA PIT
LP2 METAL LIGHT POST 0.18	USB UNKNOWN SERVICE BOX
LP3 METAL LIGHT POST 0.24	USP UNKNOWN SERVICE PIT
MCP METAL COMMUNICATION POST 0.078	WM WATER METER
MSC METAL SERVICE CUPBOARD	WMC WATER METER CASE
	W WATER VALVE

LEGEND SIGNS

20KSL 20 KILOMETRE SPEED LIMIT
12P 12 P PARKING LIMIT
AP ALCOHOL PROHIBITED
BP BICYCLE PARKING
BR BUSH REGENERATION
BRV BUSH REGENERATION
EVO EMERGENCY VEHICLES ONLY
KCAD KEEP CLEAR AMBULANCE ONLY
KNP KEEP CLEAR STOPWATER PIPE
NP NO PARKING
NW NEIGHBOURHOOD WATCH
OP ORDNANCE POST
OS ORDNANCE SIGN
OW ONE WAY
PAW PAVED AREA
PMB PARKING MARKED BAY
SS STREET

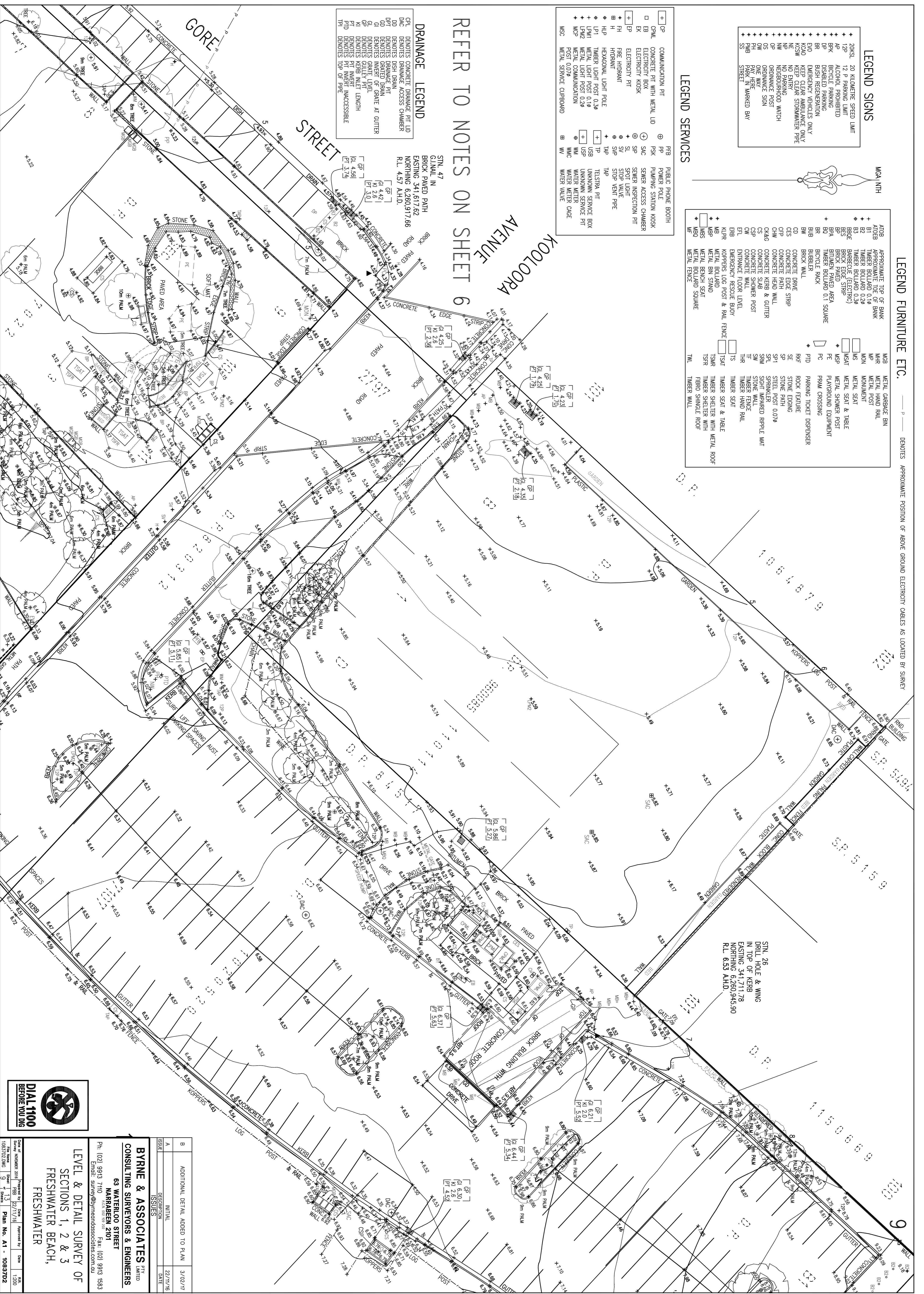
REFER TO NOTES ON SHEET 6

DRAINAGE LEGEND

GPL DENOTES CONCRETE DRAINAGE PIT LID
DAC DENOTES DRAINAGE ACCESS CHAMBER
DD DENOTES DISH DRAIN
DPT DENOTES DRAINAGE PIT
GI DENOTES INVERT OF GRADE AT GUTTER
GL DENOTES GATE LEVEL
GP DENOTES GUTTER LEVEL
KI DENOTES KERB INLET LENGTH
MD DENOTES PIT INVERT UNACCESSIBLE
PID DENOTES PIT INVERT UNACCESSIBLE
TI DENOTES TOP OF PIPE

SIN. 47
GUMUL IN
BRICK PAVED PATH
EASTING 341,617.62
NORTHING 6,260,917.66
R.L. 4.57 A.H.D.

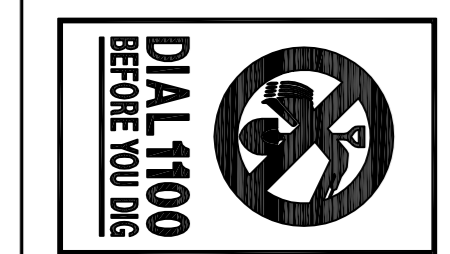
SIN. 26
DRILL HOLE & WING
IN TOP OF KERB
EASTING 341,711.78
NORTHING 6,260,945.90
R.L. 6.53 A.H.D.



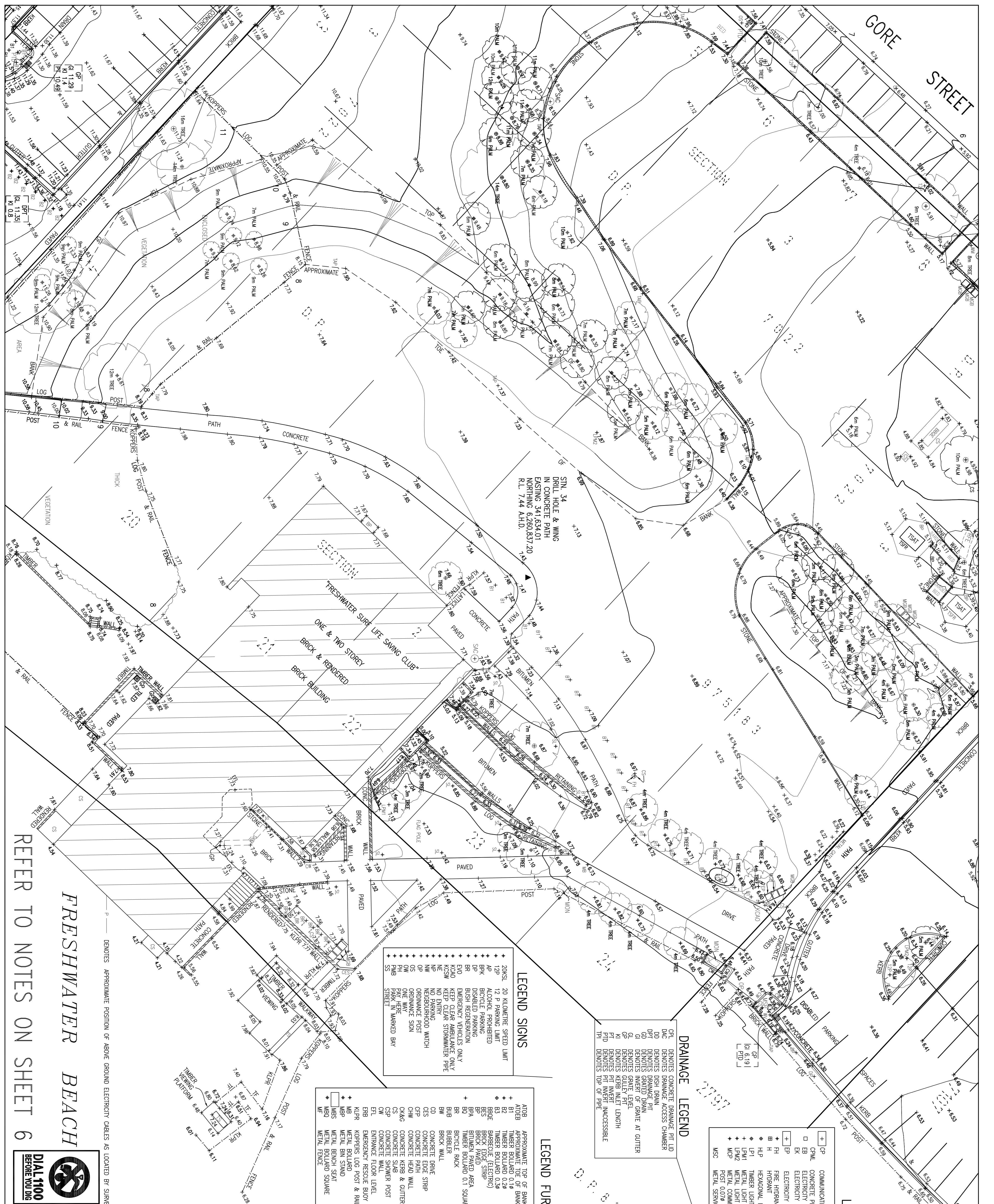
BYRNE & ASSOCIATES PTY LIMITED
CONSULTING SURVEYORS & ENGINEERS
63 WATERLOO STREET
NARRABEEN 2101
Ph: (02) 9913 7110
Fax: (02) 9913 1583
Email: survey@byrneassociates.com.au

LEVEL & DETAIL SURVEY OF
SECTIONS 1, 2 & 3
FRESHWATER BEACH,
FRESHWATER

ISSUE	DESCRIPTION	DATE
A	INITIAL	22/11/16
B	ADDITIONAL DETAIL ADDED TO PLAN	3/02/17



Drawn by	Checked by	Approved by	Date
10/30/16/20/16	13	13	22/11/16
Scale	Sheet	Plan No.	1083702
3	1	A1	



REFER TO NOTES ON SHEET 6

FRESHWATER BEACH

- LEGEND SIGNS**
- 20KSL 20 KILOMETRE SPEED LIMIT
 - 12P 12 P PARKING LIMIT
 - ALCOPD ALCOHOL PROHIBITED
 - BRK BROCKE BICYCLE
 - DISP DISPOSED BICYCLE
 - DRP DISPOSED PARKING
 - BR BRICK REGENERATION
 - EMERGENCY VEHICLES ONLY
 - KOAO KEEP CLEAR STORMWATER PIPE
 - NO ENTRY
 - NO PARKING
 - NEIGHBOURHOOD WATCH
 - ORND ORNDANCE SIGN
 - OS ON
 - OW PARK HERE
 - PH PARK IN MARKED BAY
 - SS STREET

- LEGEND FURNITURE ETC.**
- AGB APPROXIMATE TOP OF BANK
 - B1 TIMBER BOLLARD 0.18
 - B2 TIMBER BOLLARD 0.29
 - BOE BRICK EDGE (ELECTRIC)
 - BES BRICK EDGE STRIP
 - BP BRICK PAVED AREA
 - BQ BRICKEN BOLLARD 0.1 SQUARE
 - BR BICYCLE RACK
 - BWB BUBBLER
 - BW BRICK WALL
 - CD CONCRETE DRIVE
 - CS CONCRETE EDGE STRIP
 - CP CONCRETE PAVEMENT
 - CHM CONCRETE HEAD WALL
 - CK&G CONCRETE KERB & GUTTER
 - CS CONCRETE SLAB
 - CP CONCRETE SHOWER POST
 - ETL ENTRANCE FLOOR LEVEL
 - ENB EMERGENCY RESCUE BUIY
 - KLR KOPPEERS LOG POST & RAIL FENCE
 - MB METAL BOLLARD
 - MBB METAL BOLLARD
 - MBS METAL BENCH SEAT
 - MS METAL BENCH SQUARE
 - M METAL FENCE

- LEGEND SERVICES**
- CPB PUBLIC PHONE BOOTH
 - PP POWER POLE
 - PSK PUMPING STATION KIOSK
 - SAC SENIOR ACCESS CHAMBER
 - SIP SENIOR INSPECTION PIT
 - SL SPOT LIGHT
 - SV STOP VALVE
 - SVP STOP VENT PIPE
 - TAP TELSTRA PIT
 - USB UNKNOWN SERVICE BOX
 - USP UNKNOWN SERVICE PIT
 - WMC WATER METER CAGE
 - WV WATER VALVE

- LEGEND**
- CP CONCRETE DRAINAGE PIT
 - CPM CONCRETE PIT WITH METAL LID
 - EB ELECTRICITY BOX
 - EK ELECTRICITY KIOSK
 - PH FIRE HYDRANT
 - HUP HEXAGONAL LIGHT POLE
 - LPI METAL LIGHT POST 0.39
 - LPIZ METAL LIGHT POST 0.28
 - MPC METAL COMMUNICATION
 - MSC METAL SERVICE CURBBOARD

DIAL 1100
BEFORE YOU DIG

Ph: (02) 9913 7110
Fax: (02) 9913 1583
Email: survey@byrneassociates.com.au

BYRNE & ASSOCIATES PTY LIMITED
CONSULTING SURVEYORS & ENGINEERS
63 WATERLOO STREET
NARRABEEN 2101

LEVEL & DETAIL SURVEY OF
SECTIONS 1, 2 & 3
FRESHWATER BEACH,
FRESHWATER

ISSUE	DESCRIPTION	DATE
B	ADDITIONAL DETAIL ADDED TO PLAN	3/02/17
A	INITIAL	22/11/16

ISSUES	DATE
B	3/02/17
A	22/11/16

ISSUES	DATE
B	3/02/17
A	22/11/16

ISSUES	DATE
B	3/02/17
A	22/11/16

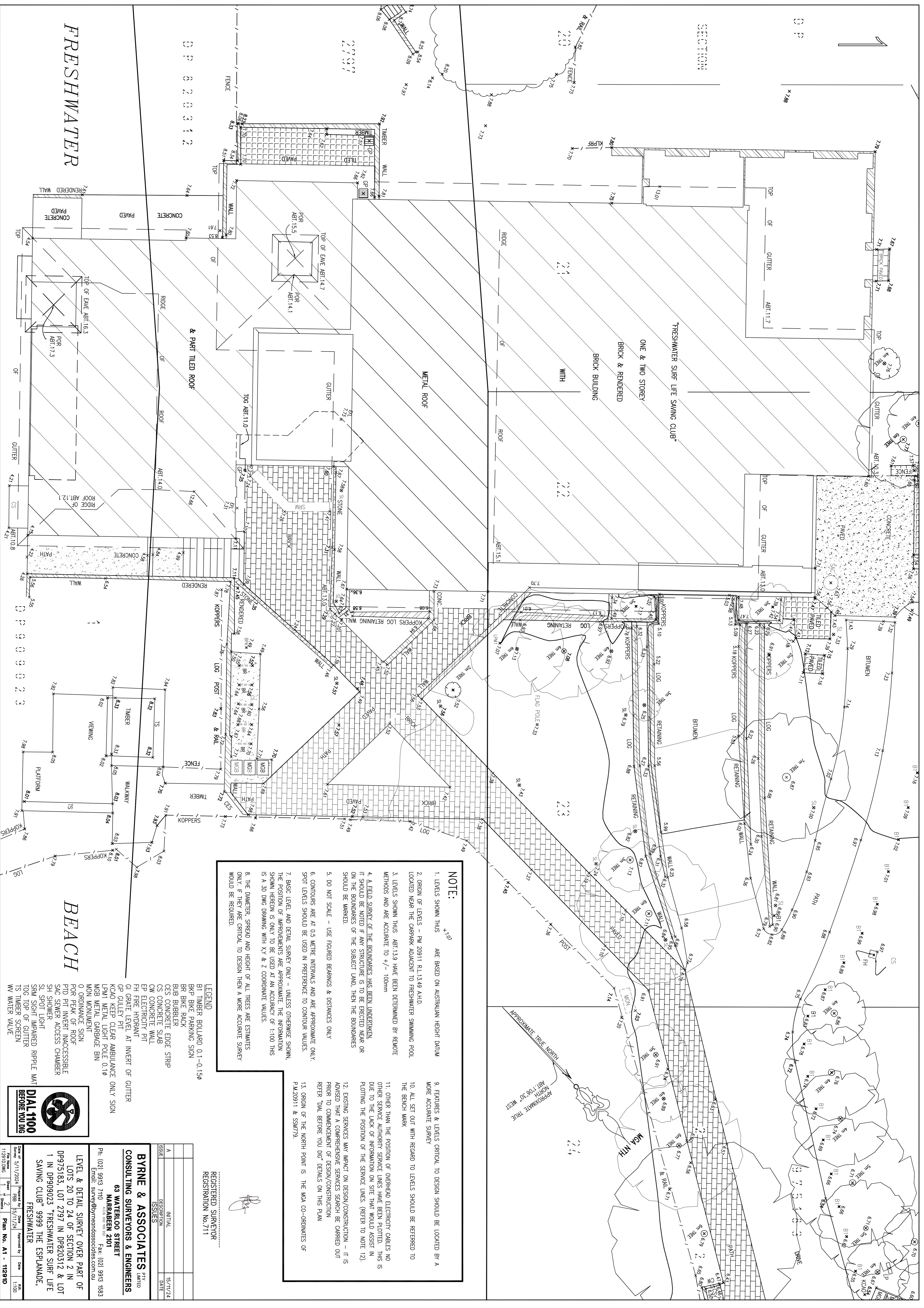
ISSUES	DATE
B	3/02/17
A	22/11/16

ISSUES	DATE
B	3/02/17
A	22/11/16

ISSUES	DATE
B	3/02/17
A	22/11/16

ISSUES	DATE
B	3/02/17
A	22/11/16

ISSUES	DATE
B	3/02/17
A	22/11/16



NOTE:

- LEVELS SHOWN THIS ARE BASED ON AUSTRALIAN HEIGHT DATUM
- ORIGIN OF LEVELS - PM 20911 R.L.13.49 AHD LOCATED NEAR THE CARPARK ADJACENT TO FRESHWATER SWIMMING POOL
- LEVELS SHOWN THIS APT.13.9 HAVE BEEN DETERMINED BY REMOTE METHODS AND ARE ACCURATE TO +/- 100mm
- A FEED SURVEY OF THE BOUNDARIES HAS BEEN UNDERTAKEN. IT SHOULD BE NOTED IF ANY STRUCTURE IS TO BE ERECTED NEAR OR ON THE BOUNDARIES OF THE SUBJECT LAND, THEN THE BOUNDARIES SHOULD BE MARKED.
- DO NOT SCALE - USE FIGURED BEARINGS & DISTANCES ONLY
- CONTOURS ARE AT 0.5 METRE INTERVALS AND ARE APPROXIMATE ONLY. SPOT LEVELS SHOULD BE USED IN PREFERENCE TO CONTOUR VALUES.
- BASIC LEVEL AND DETAIL SURVEY ONLY - UNLESS OTHERWISE SHOWN, THE POSITION OF IMPROVEMENTS ARE APPROXIMATE. THE INFORMATION SHOWN HEREON IS ONLY TO BE USED AT AN ACCURACY OF 1:100 THIS IS A 2D DWG DRAWING WITH XY & Z COORDINATE VALUES.
- THE DIAMETER, SPREAD AND HEIGHT OF ALL TREES ARE ESTIMATES ONLY. IF THEY ARE CRITICAL TO DESIGN THEN A MORE ACCURATE SURVEY WOULD BE REQUIRED.
- FEATURES & LEVELS CRITICAL TO DESIGN SHOULD BE LOCATED BY A MORE ACCURATE SURVEY
- ALL SET OUT WITH REGARD TO LEVELS SHOULD BE REFERRED TO THE BENCH MARK
- OTHER THAN THE POSITION OF OVERHEAD ELECTRICITY CABLES NO OTHER SERVICE AUTHORITY SERVICE LINES HAVE BEEN PLOTTED. THIS IS DUE TO THE LACK OF INFORMATION ON SITE THAT WOULD ASSIST IN PLOTTING THE POSITION OF THE SERVICE LINES. (REFER TO NOTE 12).
- EXISTING SERVICES MAY IMPACT ON DESIGN/CONSTRUCTION - IT IS ADVISED THAT A COMPREHENSIVE SERVICES SEARCH BE CARRIED OUT PRIOR TO COMMENCEMENT OF DESIGN/CONSTRUCTION REFER TOAL BEFORE YOU DGC DETAILS ON THIS PLAN
- ORIGIN OF THE NORTH POINT IS THE MCA CO-GRIMMIES OF P.M.20911 & S.M.7/9.

LEGEND

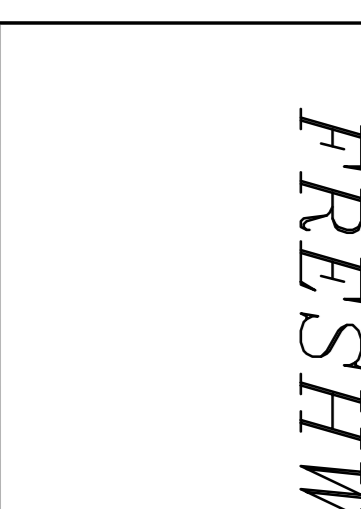
- BI TIMBER BOLLARD 0.1-0.15@
- BKP BIKE PARKING SIGN
- BR BIKE RACK
- BUB BUBBLER
- CES CONCRETE EDGE STRIP
- CW CONCRETE SLAB
- EP ELECTRICITY PIT
- FI FIRE HYDRANT
- GI GRATE LEVEL AT INVERT OF GUTTER
- GP GUTTER PIT
- KCAO KEEP CLEAR AMBUANCE ONLY SIGN
- LKA METAL LIGHT POLE 0.1@
- MGB METAL GARBAGE BIN
- MW MONUMENT
- O ORDNANCE SIGN
- OPR PEAK OF ROOF
- PID PIT INVERT INACCESSIBLE
- SAC SEWER ACCESS CHAMBER
- SH SHOWER
- SI SPOT LIGHT
- SRM SIGHT IMPAIRED RIPPLE MAT
- TCG TOP OF GUTTER
- TS TIMBER SCREEN
- WV WATER VALVE

REGISTERED SURVEYOR
REGISTRATION No.711

BYRNE & ASSOCIATES PTY LIMITED
CONSULTING SURVEYORS & ENGINEERS
63 WATERLOO STREET
MARRAHEEN 2101
Ph: (02) 9913 7110
A/CN 000 000 000 Fax: (02) 9913 1583
Email: survey@byrneandassociates.com.au

LEVEL & DETAIL SURVEY OVER PART OF LOTS 20 TO 24 OF SECTION 2 IN DP975183, LOT 2797 IN DP620312 & LOT 1 IN DP909023 "FRESHWATER SURF LIFE SAVING CLUB" 9999 THE ESPINADE, FRESHWATER

DATE OF SURVEY: 5/11/2024
DRAWN BY: [Signature]
CHECKED BY: [Signature]
DATE: 15/11/24
SCALE: 1:100
PLAN NO. A1 - 11291D



FRESHWATER

BEACH

SECTION 2

SECTION 1

DATE OF SURVEY: 5/11/2024

DRAWN BY: [Signature]

CHECKED BY: [Signature]

DATE: 15/11/24

SCALE: 1:100

PLAN NO. A1 - 11291D

