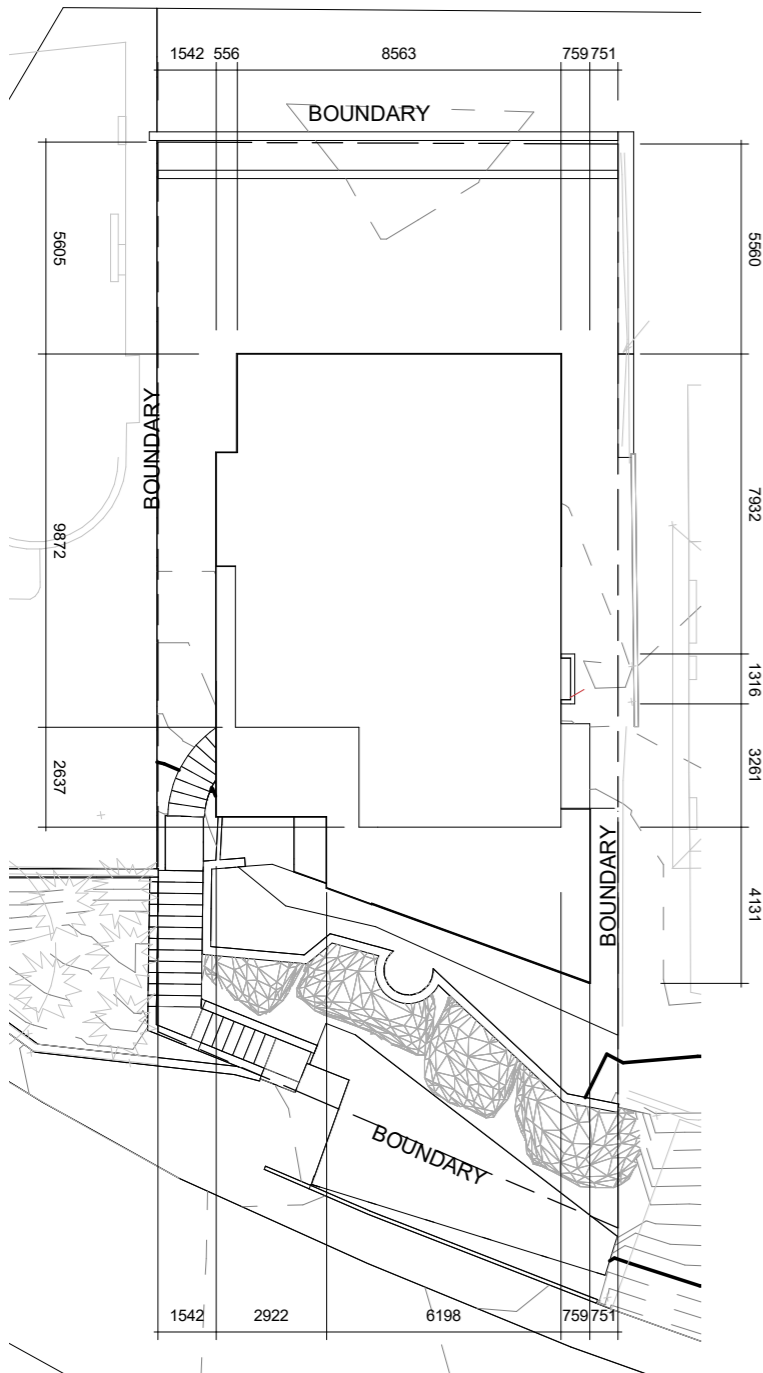
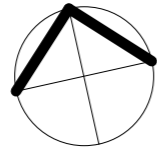
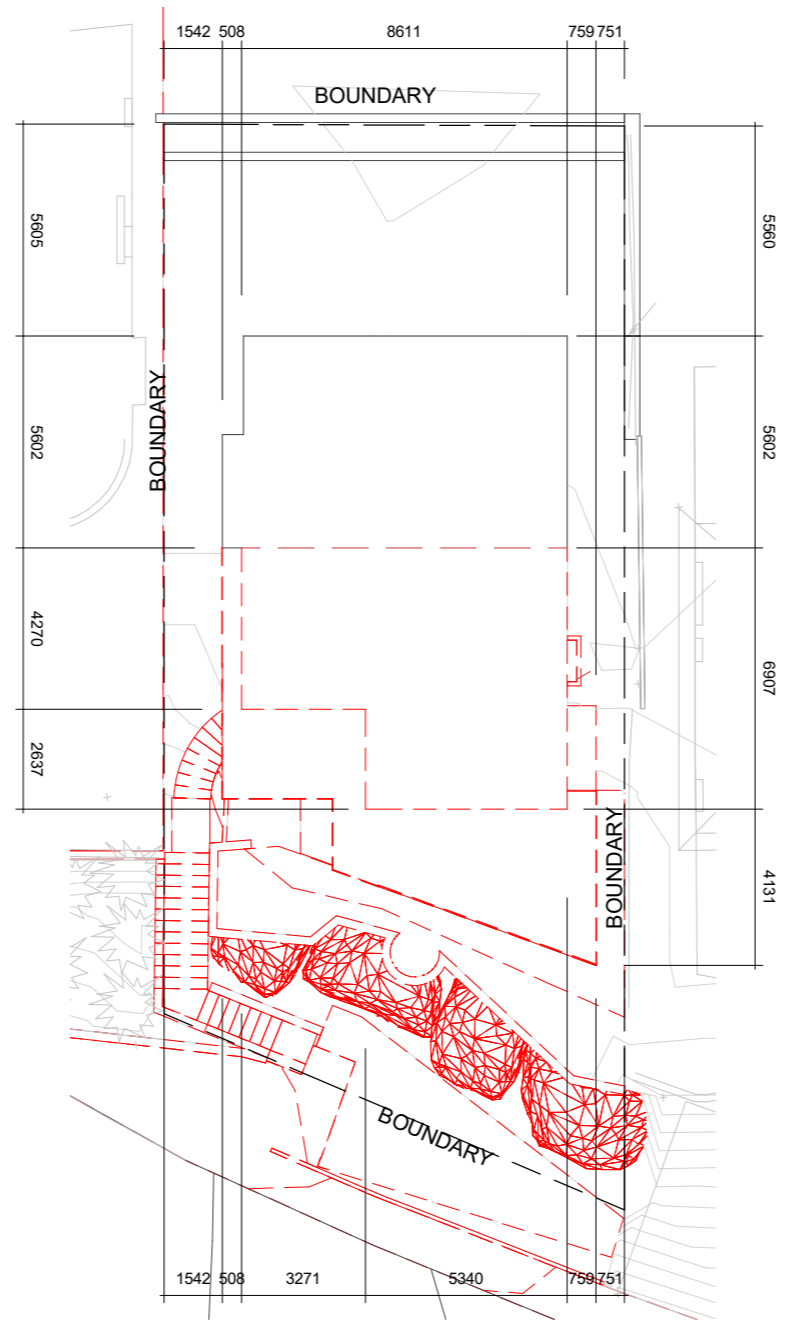
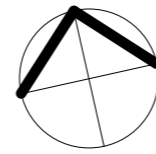


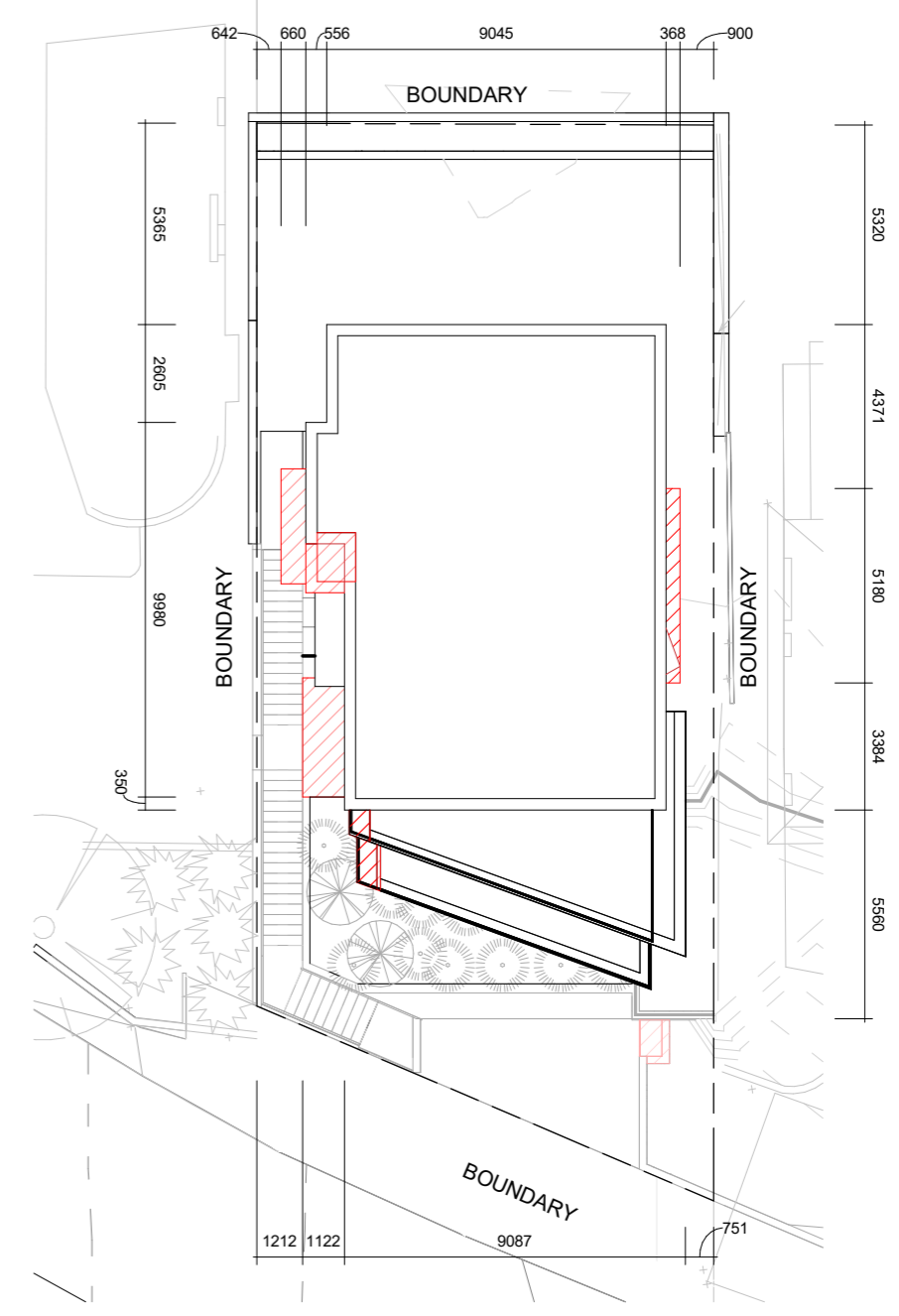
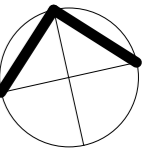
EXISTING



PROPOSED DEMOLITION SHOWN IN RED



MODIFICATIONS OUTSIDE OF THE FOOTPRINT OF THE APPROVED "DA 2018 / 0764" SHOWN IN RED HATCH



1 EXISTING SITE PLAN
1 : 200

3 DEMOLITION PLAN
1 : 200

2 PROPOSED SITE PLAN
1 : 200



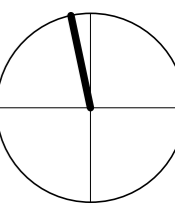
ARCLAB PTY LTD
A.C.N. 143472762
PO Box 1239 Newport Beach
NSW 2106 Australia
Telephone +61 416 886 537
email: arc@arclab.com.au
www.arclab.com.au

SHEET TITLE
SITE PLANS
PROJECT ADDRESS
98 CUTLER ROAD,
CLONTARF

CLIENT
BOWES HOUSE
DOCUMENTATION
-

All works to be in accordance with Australian Standards, The Building Code of Australia, other relevant codes, and with Manufacturers' recommendations and instructions. Do not scale from drawings. Verify all dimensions on site prior to construction. The drawing is copyright and may not be used without written consent from ARCLAB PTY LTD.

Drawn	Scale	Sheet	Date	Job N°.	Sheet N°	Issue/Revision
Author	1 : 200	A 3	14.8.19	0155-19	01-S4.55	

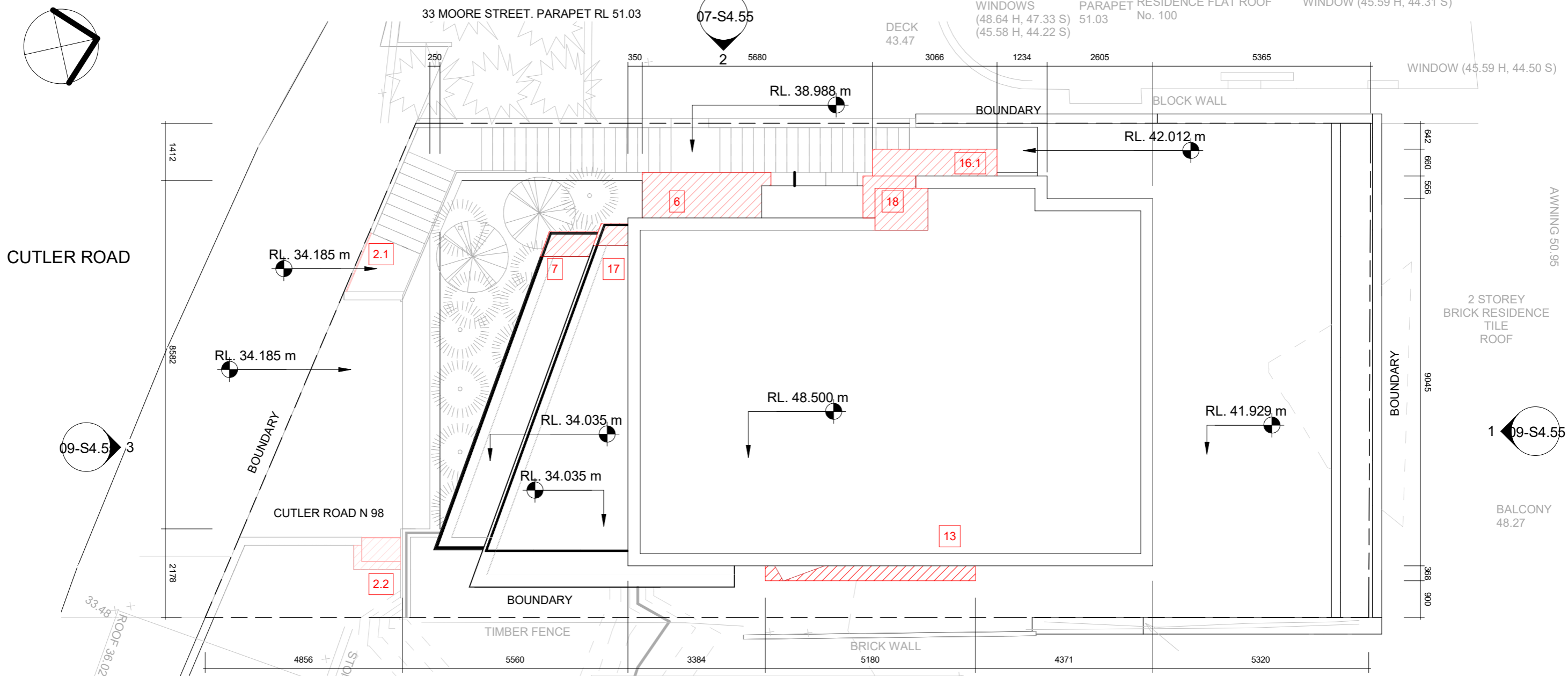


CUTLER ROAD

33 MOORE STREET. PARAPET RL 51.03

07-S4.55

2 STOREY BRICK RESIDENCE FLAT ROOF No. 100
 WINDOWS (48.64 H, 47.33 S) (45.58 H, 44.22 S)
 PARAPET 51.03
 WINDOW (48.60 H, 47.53 S) WINDOW (45.59 H, 44.31 S)



1 SITE PLAN
 1 : 100

SCHEDULE OF MODIFICATIONS SOUGHT	LEVEL 3 MODIFICATIONS	LEVEL 4 MODIFICATIONS
LEVEL 1 MODIFICATIONS 1. Proposed storage space 2.1 Proposed front boundary security gate 2.2 Gas - Electric and water meter LEVEL 2 MODIFICATIONS 3. Modified Deck adjacent to suspended landscape garden & glass barrier. 4. Proposed structural blade wall 5. Proposed modified floor layout including additional bedroom and associated windows 6. Proposed ensuite 3 and associated windows 6.1 Structural column	7. Modified floor area to ensuite 1 and associated windows 8. Modified windows to Bed 2 9. Modified door and side-light height 10. Replace Bi-fold doors with window 3.6 11. Window location modified 12. Proposed external door 13. Proposed increase to Bed 3 floor area 14. Modified window height 15. Modified window height 15.1 Modified bedroom area 16. Modified Door heights 16.1 Concrete slab above entry	17. Extend terrace 18. Proposed additional floor area to kitchen + modified kitchen windows 19. Modified pantry window 20. Modified pantry window 21. Remove existing chimney 22. Modified window height 23. Modified door height

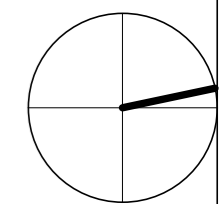
ARCLAB PTY LTD
 A.C.N. 143472762
 PO Box 1239 Newport Beach
 NSW 2106 Australia
 Telephone +61 416 886 537
 email: arc@arclab.com.au
 www.arclab.com.au

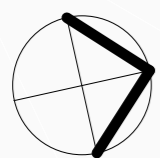
SHEET TITLE
 SITE PLAN
PROJECT ADDRESS
 98 CUTLER ROAD,
 CLONTARF

CLIENT
 BOWES HOUSE
 DOCUMENTATION
 -

All works to be in accordance with Australian Standards, The Building Code of Australia, other relevant codes, and with Manufacturers' recommendations and instructions. Do not scale from drawings.
 Verify all dimensions on site prior to construction.
 The drawing is copyright and may not be used without written consent from ARCLAB PTY LTD.

Drawn	Scale	Sheet	Date	Job N°.	Sheet N°	Issue/Revision
Author	1 : 100	A 3	14.8.19	0155-19	02-S4.55	





CUTLER ROAD

33 MOORE STREET. PARAPET RL 51.03

2 STOREY BRICK RESIDENCE FLAT ROOF No. 100

WINDOWS (48.64 H, 47.33 S) (45.58 H, 44.22 S)

WINDOW (48.60 H, 47.53 S) WINDOW (45.59 H, 44.31 S)

WINDOW (45.59 H, 44.50 S)

RL. 41.888 m

RL. 34.035 m

CUTLER ROAD N 98

96 CUTLER RIDGE RL 51.40

04 - Level 4

1 : 100

SCHEDULE OF MODIFICATIONS SOUGHT

LEVEL 4 MODIFICATIONS

- 16.1 CONCRETE SLAB ABOVE ENTRY
- 17. EXTEND TERRACE
- 18. PROPOSED ADDITIONAL FLOOR AREA TO KITCHEN + MODIFIED KITCHEN WINDOWS
- 19. MODIFIED PANTRY WINDOW
- 20. MODIFIED PANTRY WINDOW
- 21. REMOVE EXISTING CHIMNEY
- 22. MODIFIED WINDOW HEIGHT
- 23. MODIFIED DOOR HEIGHT



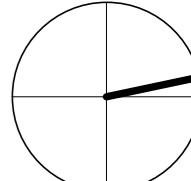
ARCLAB PTY LTD
 A.C.N. 143472762
 PO Box 1239 Newport Beach
 NSW 2106 Australia
 Telephone +61 416 886 537
 email: arc@arclab.com.au
 www.arclab.com.au

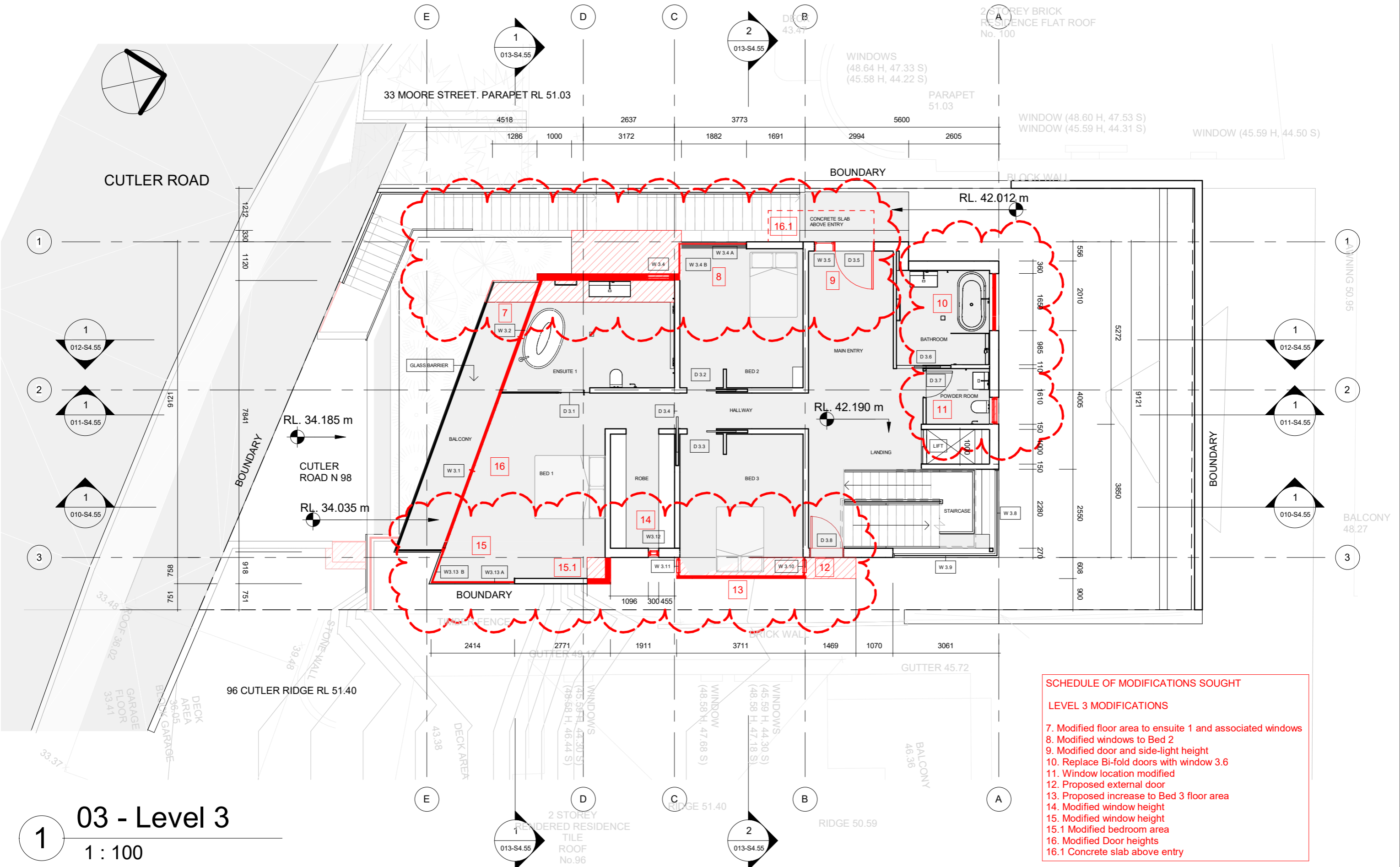
SHEET TITLE
 PROPOSED LEVEL 4
 PROJECT ADDRESS
 98 CUTLER ROAD,
 CLONTARF

CLIENT
 BOWES HOUSE
 DOCUMENTATION
 -

All works to be in accordance with Australian Standards, The Building Code of Australia, other relevant codes, and with Manufacturers' recommendations and instructions. Do not scale from drawings.
 Verify all dimensions on site prior to construction.
 The drawing is copyright and may not be used without written consent from ARCLAB PTY LTD.

Drawn	Scale	Sheet	Date	Job N°.	Sheet N°	Issue/Revision
Author	1 : 100	A 3	14.8.19	0155-19	03-S4.55	





- SCHEDULE OF MODIFICATIONS SOUGHT**
- LEVEL 3 MODIFICATIONS**
- 7. Modified floor area to ensuite 1 and associated windows
 - 8. Modified windows to Bed 2
 - 9. Modified door and side-light height
 - 10. Replace Bi-fold doors with window 3.6
 - 11. Window location modified
 - 12. Proposed external door
 - 13. Proposed increase to Bed 3 floor area
 - 14. Modified window height
 - 15. Modified window height
 - 15.1 Modified bedroom area
 - 16. Modified Door heights
 - 16.1 Concrete slab above entry

03 - Level 3
1 : 100

arclab .com.au
custom-designed homes

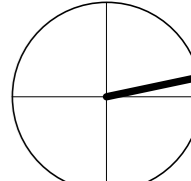
ARCLAB PTY LTD
A.C.N. 143472762
PO Box 1239 Newport Beach
NSW 2106 Australia
Telephone +61 416 886 537
email: arc@arclab.com.au
www.arclab.com.au

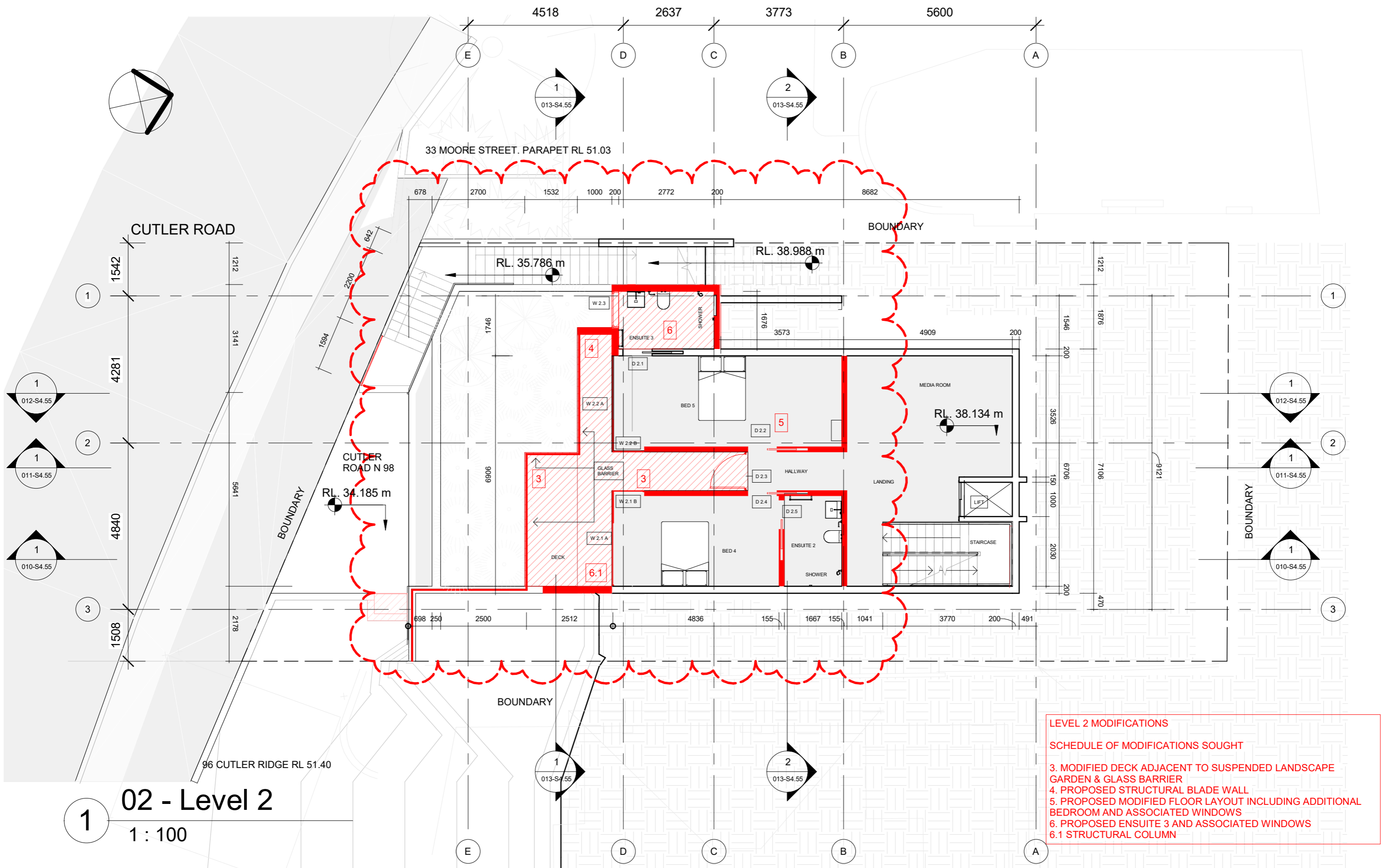
SHEET TITLE
PROPOSED LEVEL 3
PROJECT ADDRESS
98 CUTLER ROAD,
CLONTARF

CLIENT
BOWES HOUSE
DOCUMENTATION
-

All works to be in accordance with Australian Standards, The Building Code of Australia, other relevant codes, and with Manufacturers' recommendations and instructions. Do not scale from drawings.
Verify all dimensions on site prior to construction.
The drawing is copyright and may not be used without written consent from ARCLAB PTY LTD.

Drawn	Scale	Sheet	Date	Job N°.	Sheet N°	Issue/Revision
Author	1 : 100	A 3	14.8.19	0155-19	04-S4.55	





LEVEL 2 MODIFICATIONS
SCHEDULE OF MODIFICATIONS SOUGHT

- 3. MODIFIED DECK ADJACENT TO SUSPENDED LANDSCAPE GARDEN & GLASS BARRIER
- 4. PROPOSED STRUCTURAL BLADE WALL
- 5. PROPOSED MODIFIED FLOOR LAYOUT INCLUDING ADDITIONAL BEDROOM AND ASSOCIATED WINDOWS
- 6. PROPOSED ENSUITE 3 AND ASSOCIATED WINDOWS
- 6.1 STRUCTURAL COLUMN

02 - Level 2
 1 : 100

arclab .com.au
 custom-designed homes

ARCLAB PTY LTD
 A.C.N. 143472762
 PO Box 1239 Newport Beach
 NSW 2106 Australia
 Telephone +61 416 886 537
 email: arc@arclab.com.au
 www.arclab.com.au

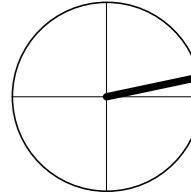
SHEET TITLE
 PROPOSED LEVEL 2

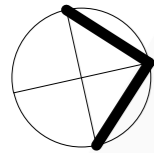
PROJECT ADDRESS
 98 CUTLER ROAD,
 CLONTARF

CLIENT
 BOWES HOUSE
 DOCUMENTATION

All works to be in accordance with Australian Standards, The Building Code of Australia, other relevant codes, and with Manufacturers' recommendations and instructions. Do not scale from drawings.
 Verify all dimensions on site prior to construction.
 The drawing is copyright and may not be used without written consent from ARCLAB PTY LTD.

Drawn	Scale	Sheet	Date	Job N°.	Sheet N°	Issue/Revision
Author	1 : 100	A 3	14.8.19	0155-19	05-S4.55	

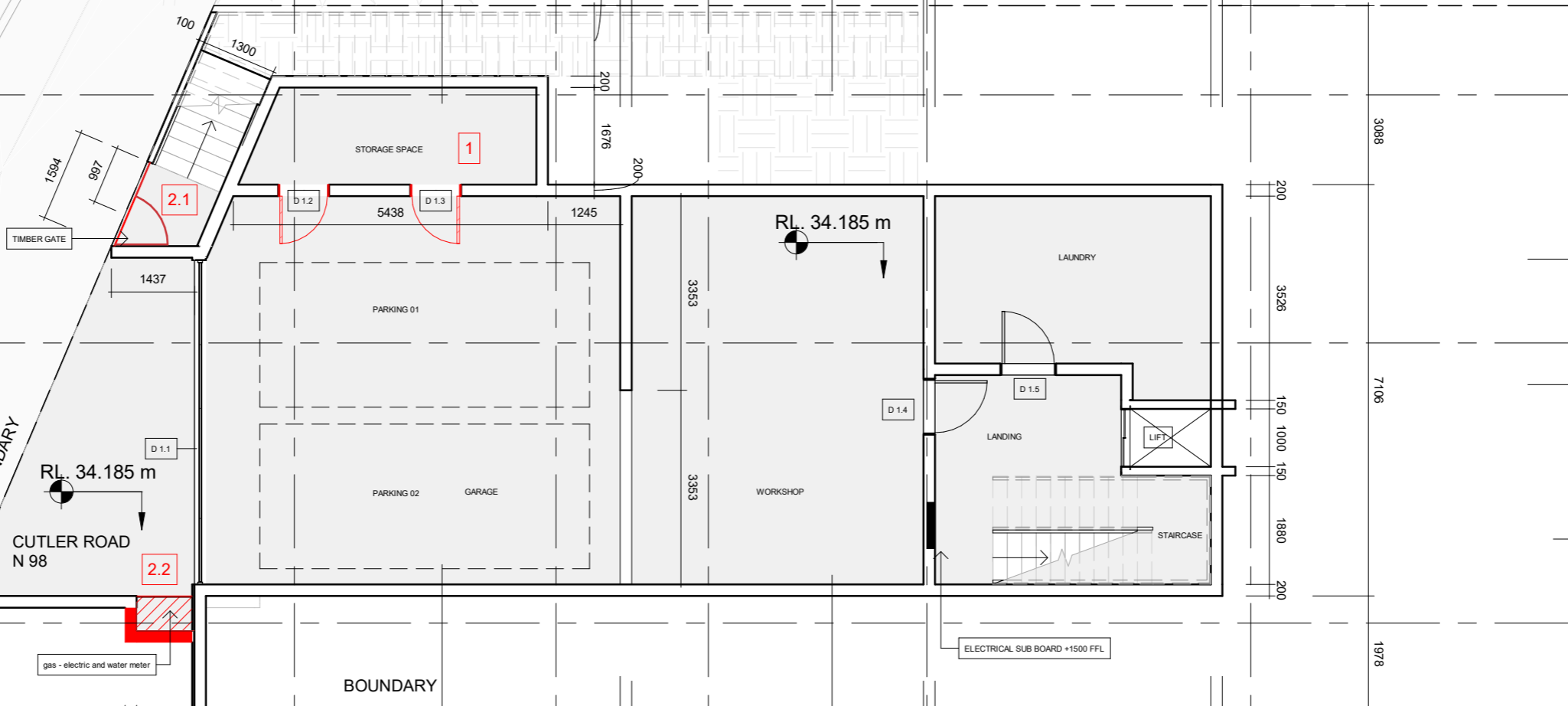




CUTLER ROAD

33 MOORE STREET. PARAPET RL 51.03

CUTLER ROAD



RL. 34.185 m

RL. 34.185 m

CUTLER ROAD N 98

96 CUTLER RIDGE RL 51.40

01 - Level 1

1 : 100

SCHEDULE OF MODIFICATIONS SOUGHT

LEVEL 1 MODIFICATIONS

1. PROPOSED STORAGE SPACE
 2.1 Proposed front boundary security gate
 2.2 Gas - Electric and water meter



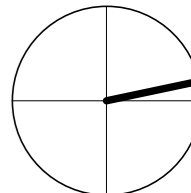
ARCLAB PTY LTD
 A.C.N. 143472762
 PO Box 1239 Newport Beach
 NSW 2106 Australia
 Telephone +61 416 886 537
 email: arc@arclab.com.au
 www.arclab.com.au

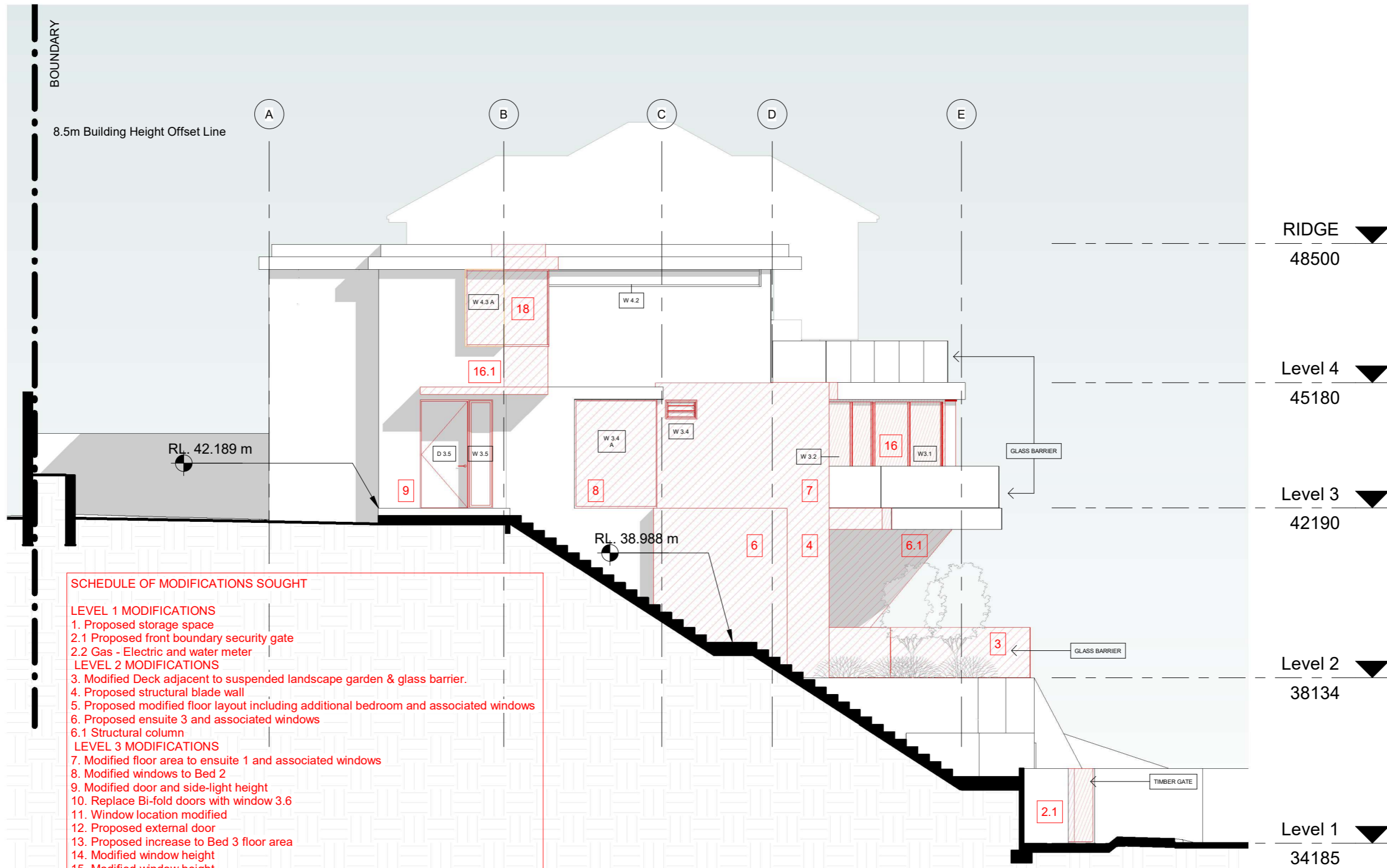
SHEET TITLE
 PROPOSED LEVEL 1
 PROJECT ADDRESS
 98 CUTLER ROAD,
 CLONTARF

CLIENT
 BOWES HOUSE
 DOCUMENTATION
 -

All works to be in accordance with Australian Standards, The Building Code of Australia, other relevant codes, and with Manufacturers' recommendations and instructions. Do not scale from drawings.
 Verify all dimensions on site prior to construction.
 The drawing is copyright and may not be used without written consent from ARCLAB PTY LTD.

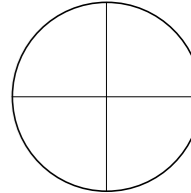
Drawn	Scale	Sheet	Date	Job N°.	Sheet N°	Issue/Revision
Author	1 : 100	A 3	14.8.19	0155-19	06-S4.55	

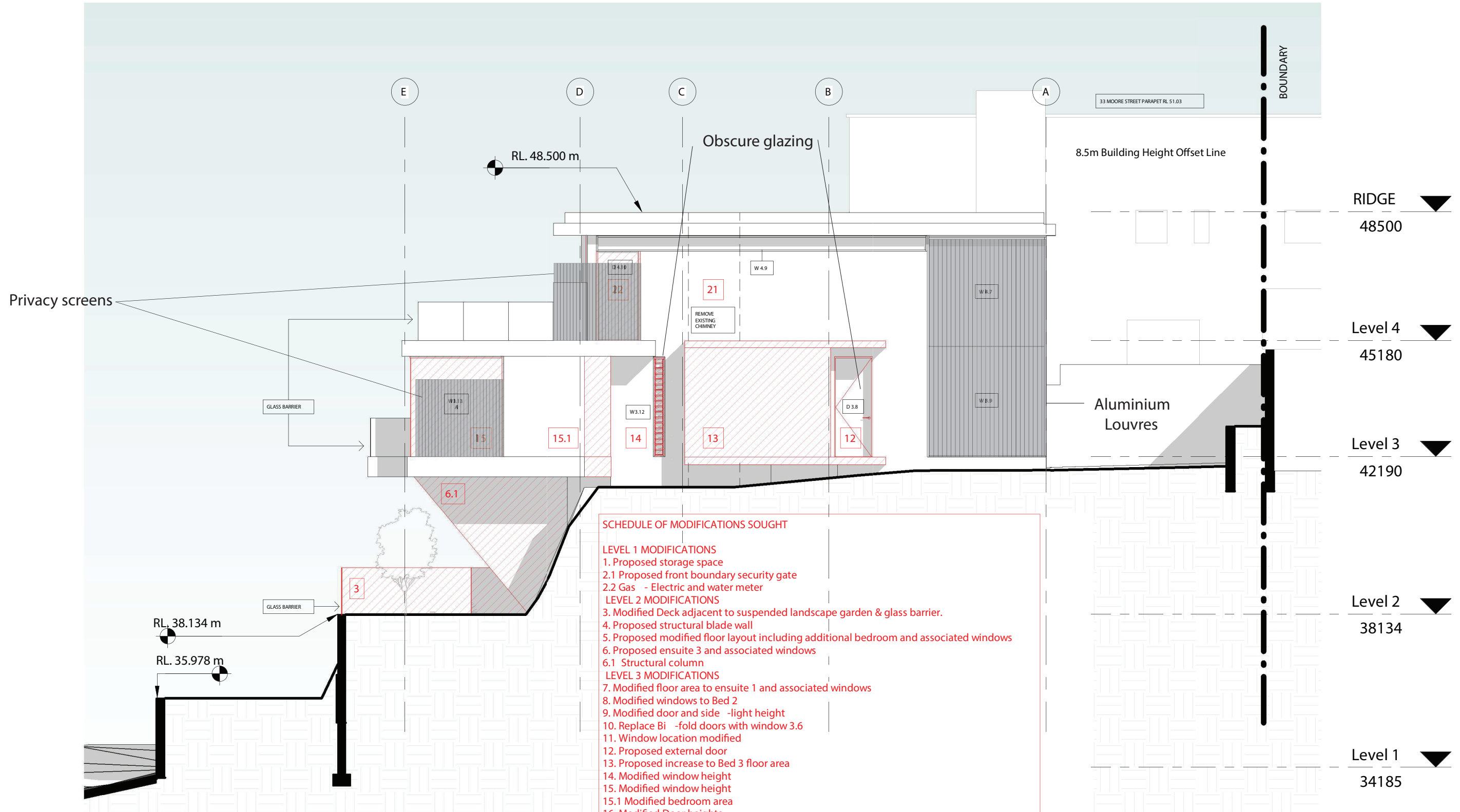




- SCHEDULE OF MODIFICATIONS SOUGHT**
- LEVEL 1 MODIFICATIONS**
- 1. Proposed storage space
 - 2.1 Proposed front boundary security gate
 - 2.2 Gas - Electric and water meter
- LEVEL 2 MODIFICATIONS**
- 3. Modified Deck adjacent to suspended landscape garden & glass barrier.
 - 4. Proposed structural blade wall
 - 5. Proposed modified floor layout including additional bedroom and associated windows
 - 6. Proposed ensuite 3 and associated windows
 - 6.1 Structural column
- LEVEL 3 MODIFICATIONS**
- 7. Modified floor area to ensuite 1 and associated windows
 - 8. Modified windows to Bed 2
 - 9. Modified door and side-light height
 - 10. Replace Bi-fold doors with window 3.6
 - 11. Window location modified
 - 12. Proposed external door
 - 13. Proposed increase to Bed 3 floor area
 - 14. Modified window height
 - 15. Modified window height
 - 15.1 Modified bedroom area
 - 16. Modified Door heights
 - 16.1 Concrete slab above entry
- LEVEL 4 MODIFICATIONS**
- 17. Extend terrace
 - 18. Proposed additional floor area to kitchen + modified kitchen windows
 - 19. Modified pantry window
 - 20. Modified pantry window
 - 21. Remove existing chimney
 - 22. Modified window height
 - 23. Modified door height

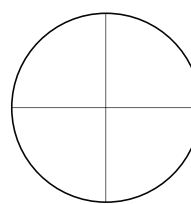
2 WEST ELEVATION
1 : 100

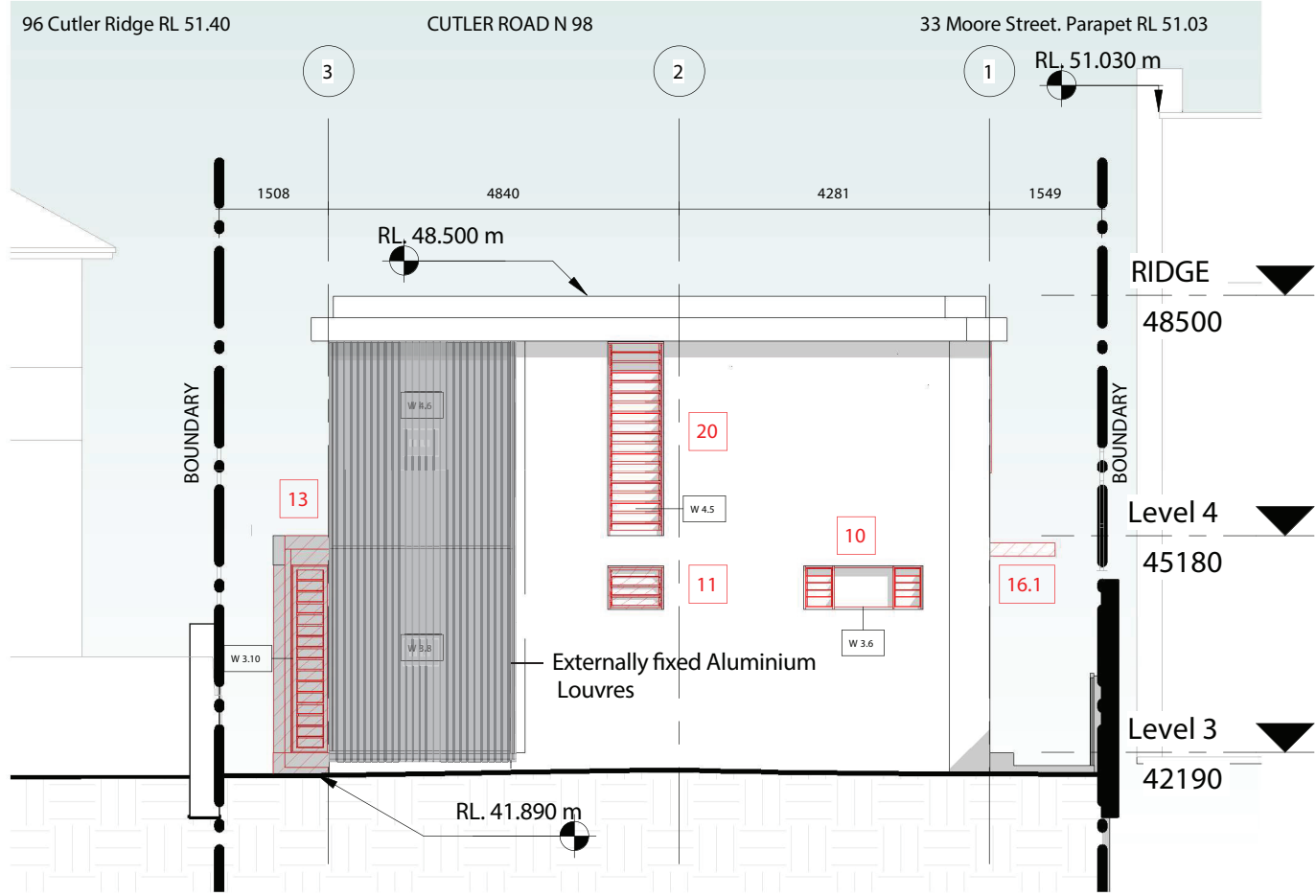




- SCHEDULE OF MODIFICATIONS SOUGHT**
- LEVEL 1 MODIFICATIONS**
- 1. Proposed storage space
 - 2.1 Proposed front boundary security gate
 - 2.2 Gas - Electric and water meter
- LEVEL 2 MODIFICATIONS**
- 3. Modified Deck adjacent to suspended landscape garden & glass barrier.
 - 4. Proposed structural blade wall
 - 5. Proposed modified floor layout including additional bedroom and associated windows
 - 6. Proposed ensuite 3 and associated windows
 - 6.1 Structural column
- LEVEL 3 MODIFICATIONS**
- 7. Modified floor area to ensuite 1 and associated windows
 - 8. Modified windows to Bed 2
 - 9. Modified door and side -light height
 - 10. Replace Bi -fold doors with window 3.6
 - 11. Window location modified
 - 12. Proposed external door
 - 13. Proposed increase to Bed 3 floor area
 - 14. Modified window height
 - 15. Modified window height
 - 15.1 Modified bedroom area
 - 16. Modified Door heights
 - 16.1 Concrete slab above entry
- LEVEL 4 MODIFICATIONS**
- 17. Extend terrace
 - 18. Proposed additional floor area to kitchen + modified kitchen windows
 - 19. Modified pantry window
 - 20. Modified pantry window
 - 21. Remove existing chimney
 - 22. Modified window height
 - 23. Modified door height

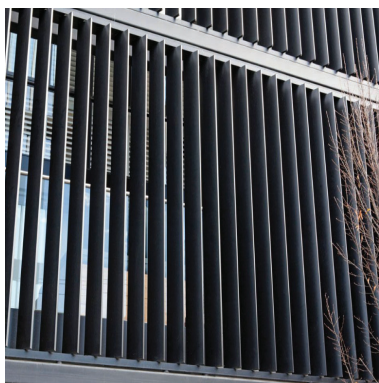
2 EAST ELEVATION
1 : 100





NORTH ELEVATION

1
1 : 100



Externally fixed Aluminium Louvres

SCHEDULE OF MODIFICATIONS SOUGHT

LEVEL 1 MODIFICATIONS

- 1. Proposed storage space
- 2.1 Proposed front boundary security gate
- 2.2 Gas - Electric and water meter

LEVEL 2 MODIFICATIONS

- 3. Modified Deck adjacent to suspended landscape garden & glass barrier.
- 4. Proposed structural blade wall
- 5. Proposed modified floor layout including additional bedroom and associated windows
- 6. Proposed ensuite 3 and associated windows
- 6.1 Structural column

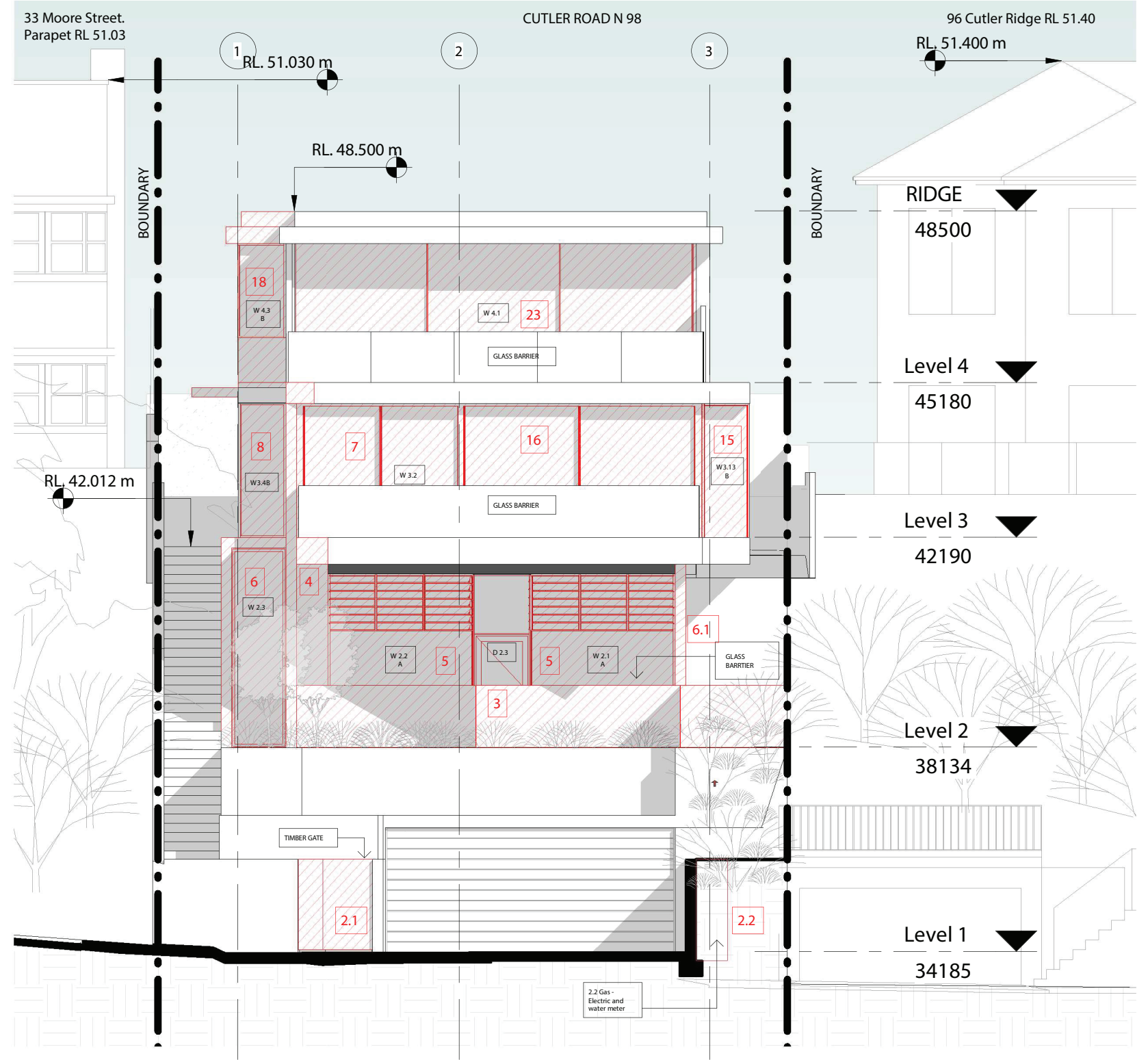
LEVEL 3 MODIFICATIONS

- 7. Modified floor area to ensuite 1 and associated windows
- 8. Modified windows to Bed 2
- 9. Modified door and side -light height
- 10. Replace Bi -fold doors with window 3.6
- 11. Window location modified
- 12. Proposed external door
- 13. Proposed increase to Bed 3 floor area

- 14. Modified window height
- 15. Modified window height
- 15.1 Modified bedroom area
- 16. Modified Door heights
- 16.1 Concrete slab above entry

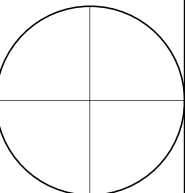
LEVEL 4 MODIFICATIONS

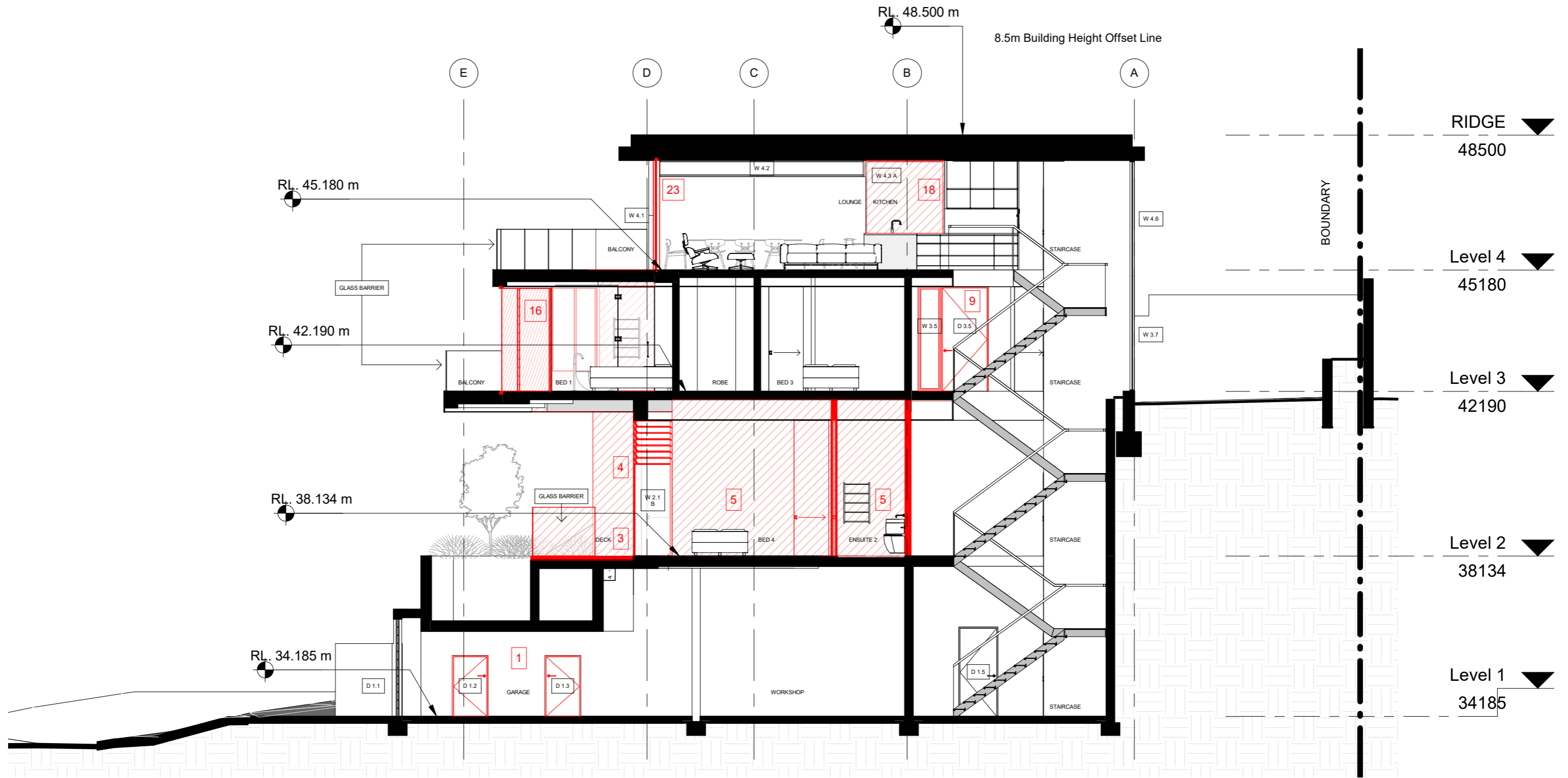
- 17. Extend terrace
- 18. Proposed additional floor area to kitchen + modified kitchen windows
- 19. Modified pantry window
- 20. Modified pantry window
- 21. Remove existing chimney
- 22. Modified window height
- 23. Modified door height



SOUTH ELEVATION

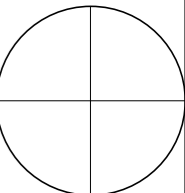
3
1 : 100

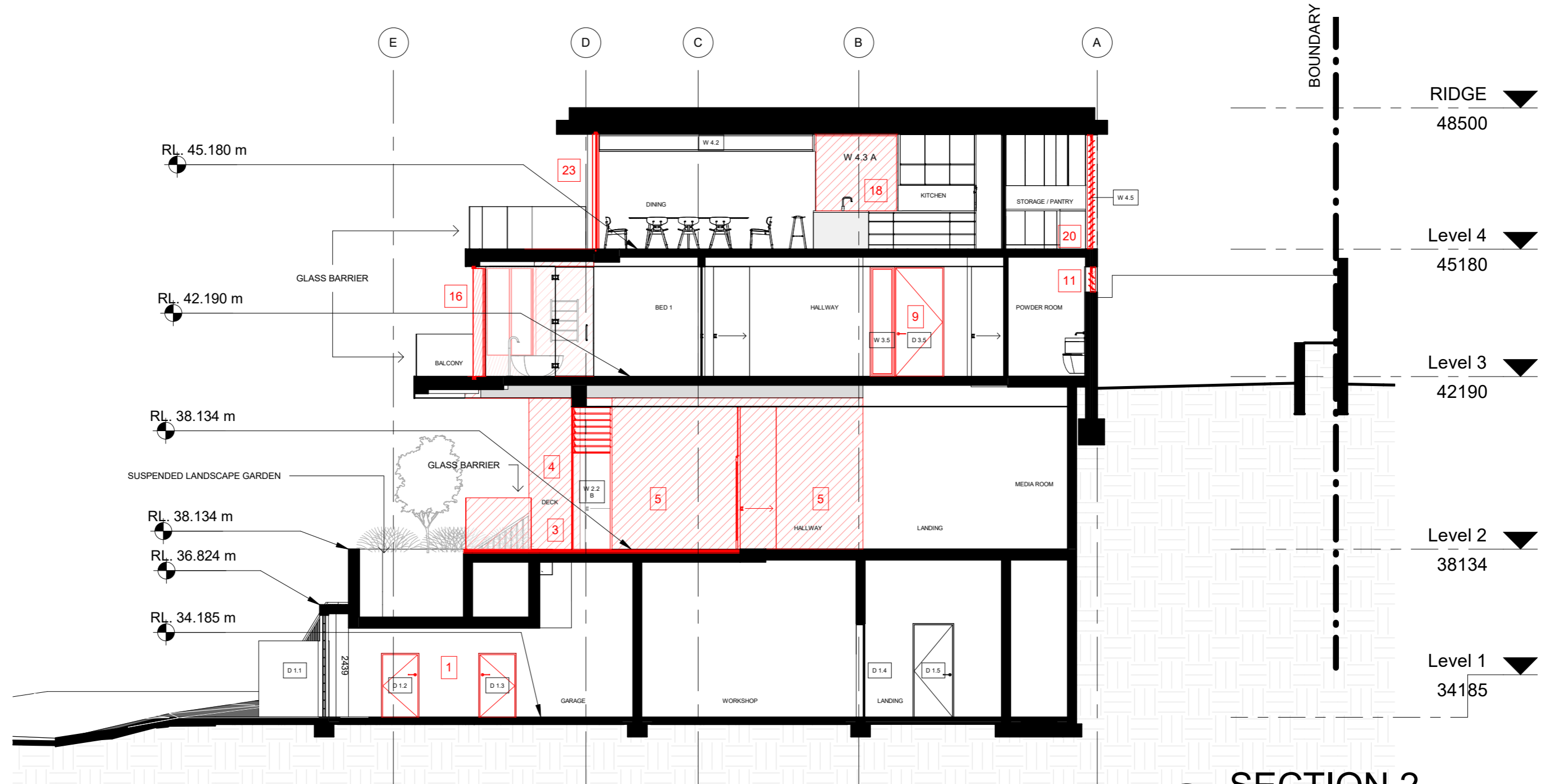




SECTION 1
1 : 100

SCHEDULE OF MODIFICATIONS SOUGHT	LEVEL 3 MODIFICATIONS	LEVEL 4 MODIFICATIONS
<p>LEVEL 1 MODIFICATIONS</p> <ul style="list-style-type: none"> 1. Proposed storage space 2.1 Proposed front boundary security gate 2.2 Gas - Electric and water meter <p>LEVEL 2 MODIFICATIONS</p> <ul style="list-style-type: none"> 3. Modified Deck adjacent to suspended landscape garden & glass barrier. 4. Proposed structural blade wall 5. Proposed modified floor layout including additional bedroom and associated windows 6. Proposed ensuite 3 and associated windows 6.1 Structural column 	<ul style="list-style-type: none"> 7. Modified floor area to ensuite 1 and associated windows 8. Modified windows to Bed 2 9. Modified door and side-light height 10. Replace Bi-fold doors with window 3.6 11. Window location modified 12. Proposed external door 13. Proposed increase to Bed 3 floor area 14. Modified window height 15. Modified window height 15.1 Modified bedroom area 16. Modified Door heights 16.1 Concrete slab above entry 	<ul style="list-style-type: none"> 17. Extend terrace 18. Proposed additional floor area to kitchen + modified kitchen windows 19. Modified pantry window 20. Modified pantry window 21. Remove existing chimney 22. Modified window height 23. Modified door height





1 SECTION 2
1 : 100

SCHEDULE OF MODIFICATIONS SOUGHT

LEVEL 1 MODIFICATIONS

- 1. Proposed storage space
- 2.1 Proposed front boundary security gate
- 2.2 Gas - Electric and water meter

LEVEL 2 MODIFICATIONS

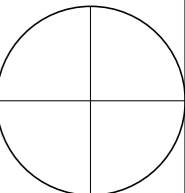
- 3. Modified Deck adjacent to suspended landscape garden & glass barrier.
- 4. Proposed structural blade wall
- 5. Proposed modified floor layout including additional bedroom and associated windows
- 6. Proposed ensuite 3 and associated windows
- 6.1 Structural column

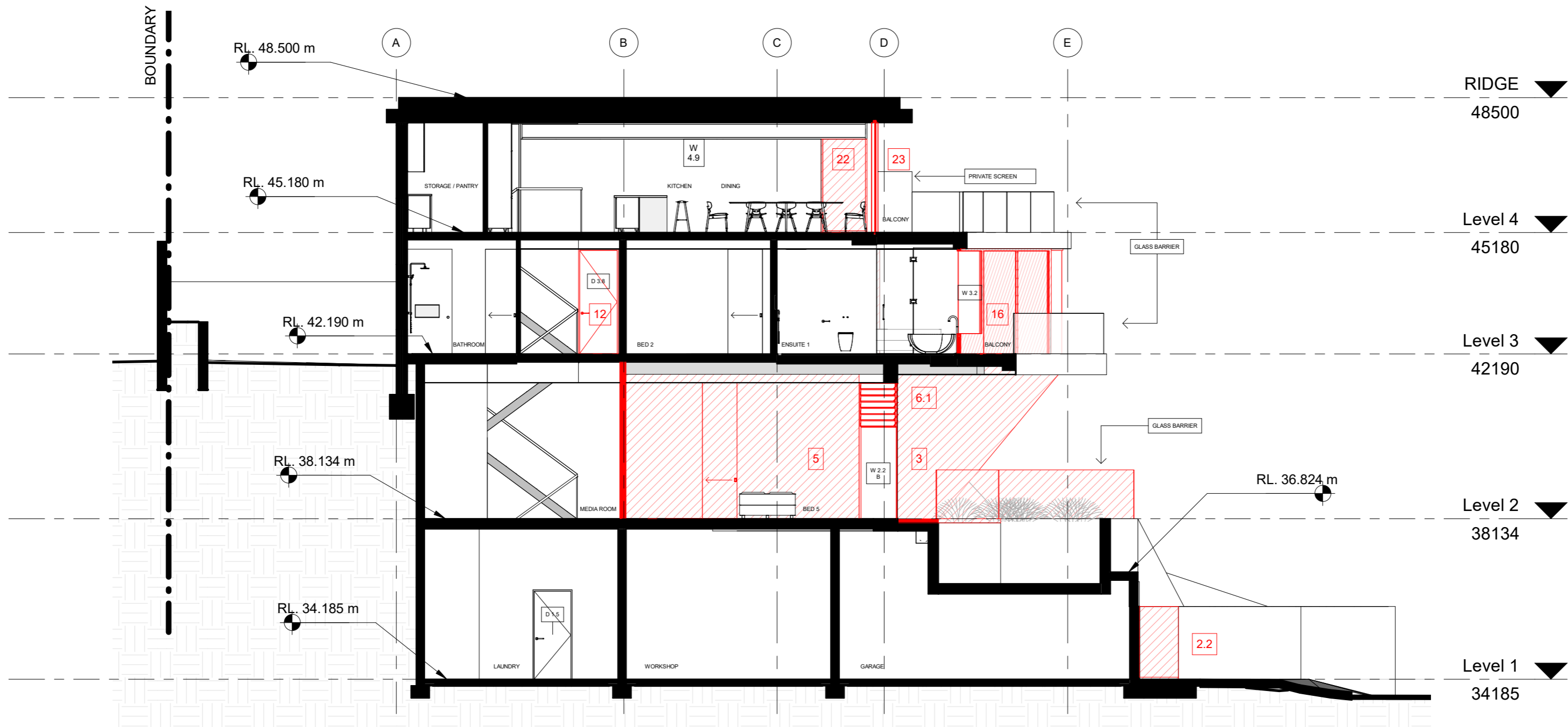
LEVEL 3 MODIFICATIONS

- 7. Modified floor area to ensuite 1 and associated windows
- 8. Modified windows to Bed 2
- 9. Modified door and side-light height
- 10. Replace Bi-fold doors with window 3.6
- 11. Window location modified
- 12. Proposed external door
- 13. Proposed increase to Bed 3 floor area
- 14. Modified window height
- 15. Modified window height
- 15.1 Modified bedroom area
- 16. Modified Door heights
- 16.1 Concrete slab above entry

LEVEL 4 MODIFICATIONS

- 17. Extend terrace
- 18. Proposed additional floor area to kitchen + modified kitchen windows
- 19. Modified pantry window
- 20. Modified pantry window
- 21. Remove existing chimney
- 22. Modified window height
- 23. Modified door height





1 SECTION 3
1 : 100

SCHEDULE OF MODIFICATIONS SOUGHT

LEVEL 1 MODIFICATIONS

- 1. Proposed storage space
- 2.1 Proposed front boundary security gate
- 2.2 Gas - Electric and water meter

LEVEL 2 MODIFICATIONS

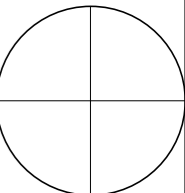
- 3. Modified Deck adjacent to suspended landscape garden & glass barrier.
- 4. Proposed structural blade wall
- 5. Proposed modified floor layout including additional bedroom and associated windows
- 6. Proposed ensuite 3 and associated windows
- 6.1 Structural column

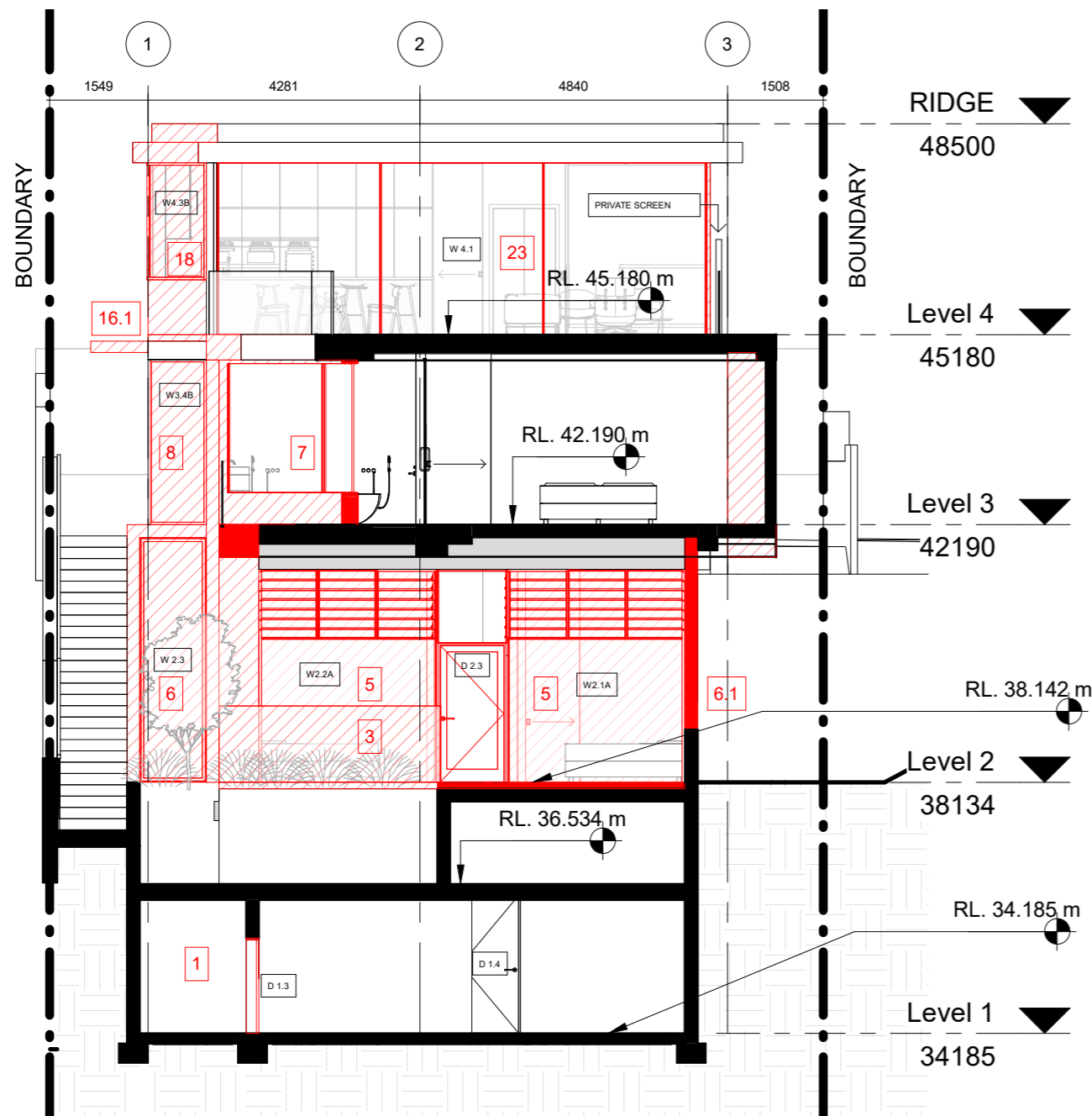
LEVEL 3 MODIFICATIONS

- 7. Modified floor area to ensuite 1 and associated windows
- 8. Modified windows to Bed 2
- 9. Modified door and side-light height
- 10. Replace Bi-fold doors with window 3.6
- 11. Window location modified
- 12. Proposed external door
- 13. Proposed increase to Bed 3 floor area
- 14. Modified window height
- 15. Modified window height
- 15.1 Modified bedroom area
- 16. Modified Door heights
- 16.1 Concrete slab above entry

LEVEL 4 MODIFICATIONS

- 17. Extend terrace
- 18. Proposed additional floor area to kitchen + modified kitchen windows
- 19. Modified pantry window
- 20. Modified pantry window
- 21. Remove existing chimney
- 22. Modified window height
- 23. Modified door height





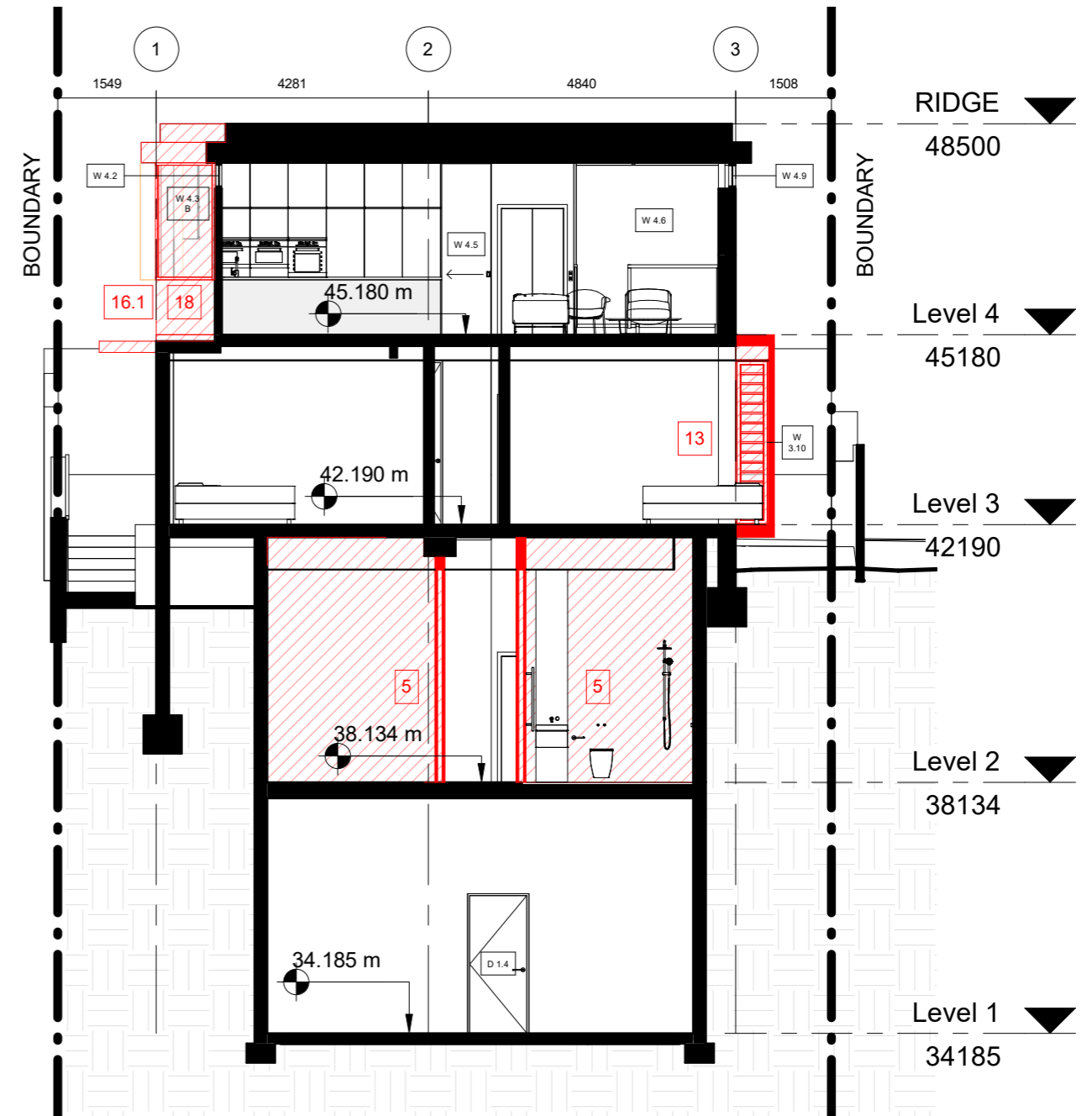
33 Moore Street.
Parapet RL 51.03

CUTLER ROAD N 98

96 Cutler Ridge RL 51.40

SECTION 4

1
1 : 100



33 Moore Street.
Parapet RL 51.03

CUTLER ROAD N 98

96 Cutler Ridge RL 51.40

SECTION 5

2
1 : 100

SCHEDULE OF MODIFICATIONS SOUGHT

LEVEL 1 MODIFICATIONS

1. Proposed storage space
- 2.1 Proposed front boundary security gate
- 2.2 Gas - Electric and water meter

LEVEL 2 MODIFICATIONS

3. Modified Deck adjacent to suspended landscape garden & glass barrier.
4. Proposed structural blade wall
5. Proposed modified floor layout including additional bedroom and associated windows
6. Proposed ensuite 3 and associated windows
- 6.1 Structural column

LEVEL 3 MODIFICATIONS

7. Modified floor area to ensuite 1 and associated windows
8. Modified windows to Bed 2
9. Modified door and side-light height
10. Replace Bi-fold doors with window 3.6
11. Window location modified
12. Proposed external door
13. Proposed increase to Bed 3 floor area
14. Modified window height
15. Modified window height
- 15.1 Modified bedroom area
16. Modified Door heights
- 16.1 Concrete slab above entry

LEVEL 4 MODIFICATIONS

17. Extend terrace
18. Proposed additional floor area to kitchen + modified kitchen windows
19. Modified pantry window
20. Modified pantry window
21. Remove existing chimney
22. Modified window height
23. Modified door height

ARCLAB PTY LTD

A.C.N. 143472762
PO Box 1239 Newport Beach
NSW 2106 Australia
Telephone +61 416 886 537
email: arc@arclab.com.au
www.arclab.com.au

SHEET TITLE

SECTION 4 - 5

PROJECT ADDRESS

98 CUTLER ROAD,
CLONTARF

CLIENT

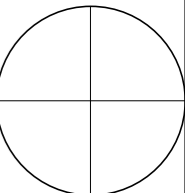
BOWES HOUSE

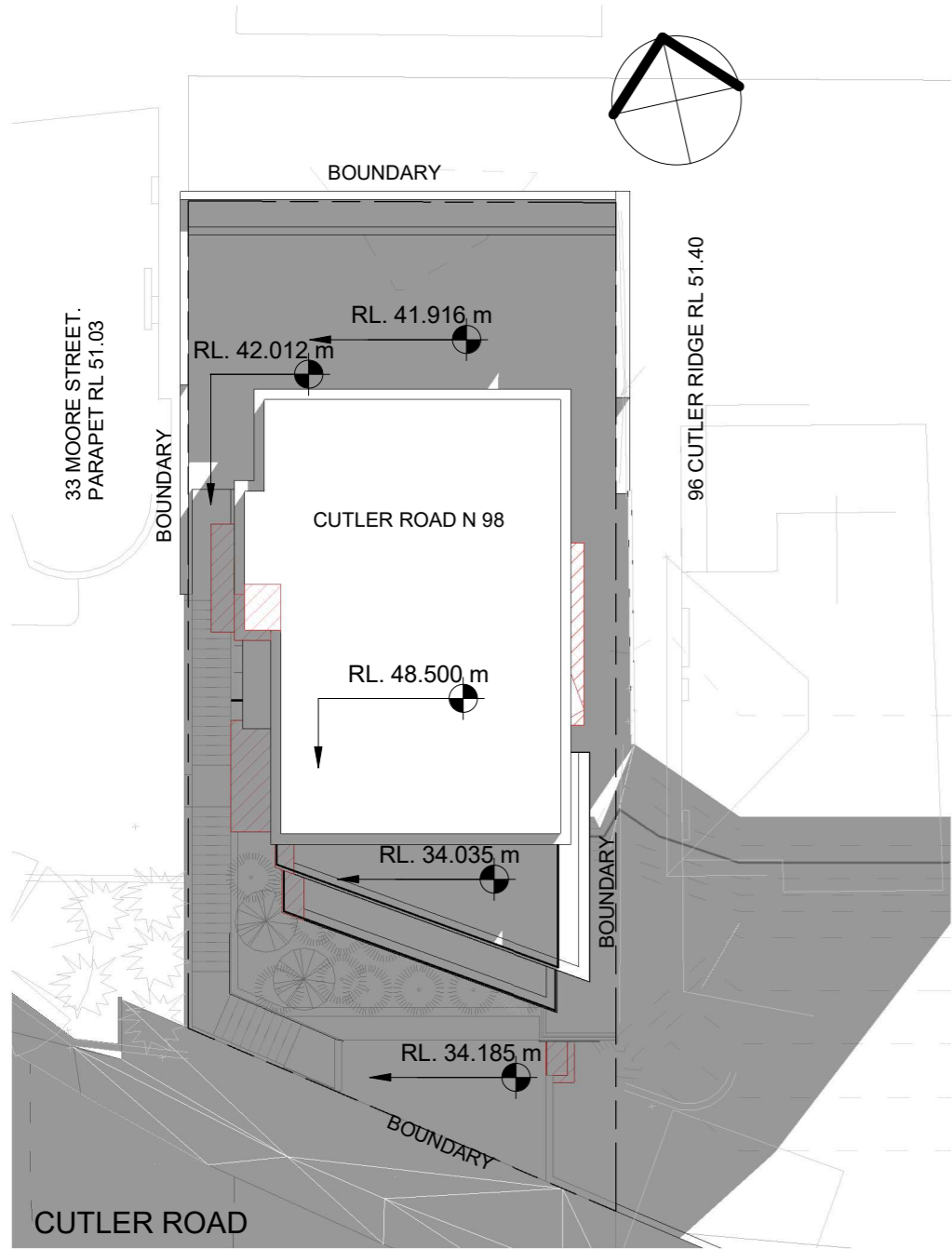
DOCUMENTATION

-

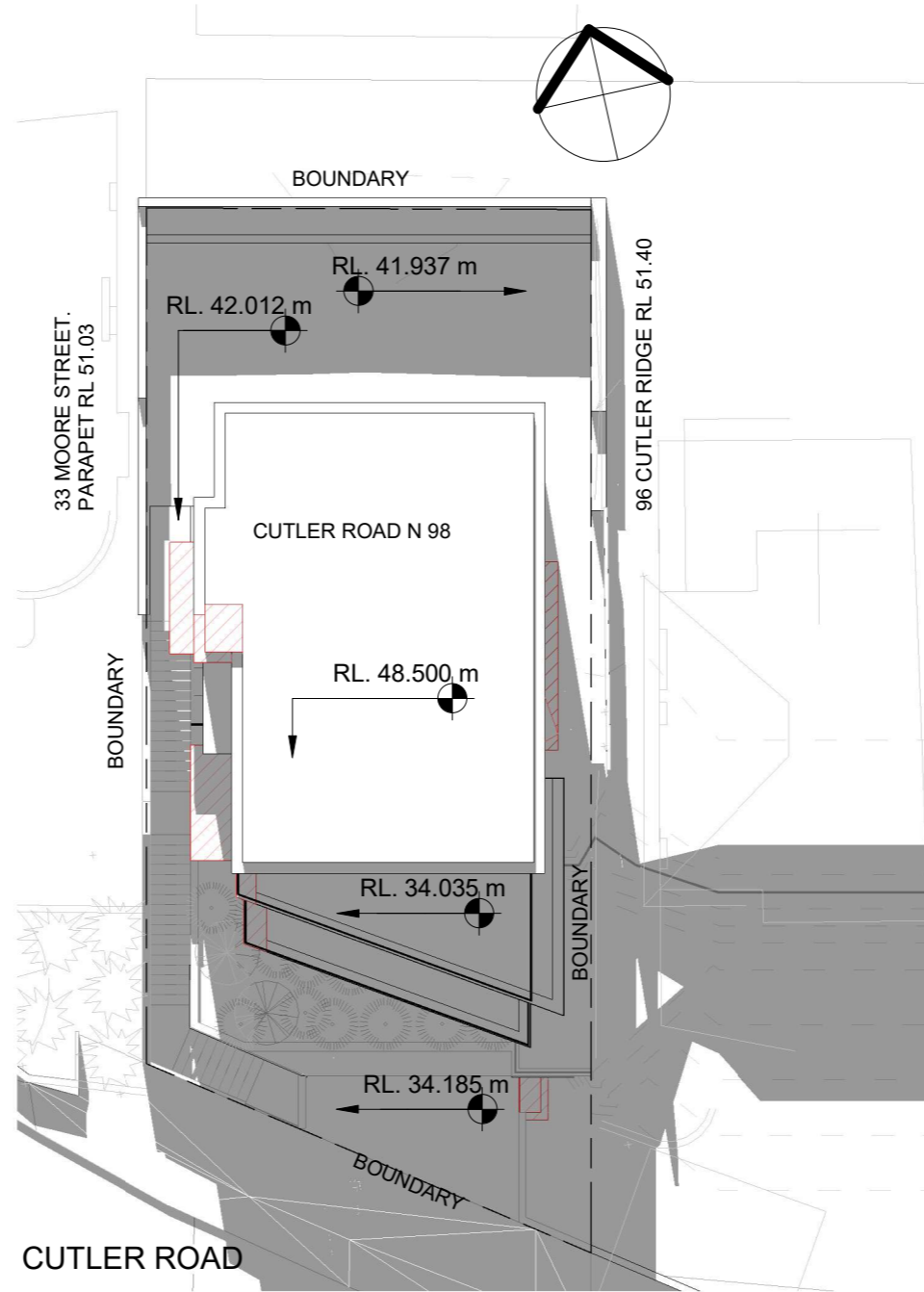
All works to be in accordance with Australian Standards, The Building Code of Australia, other relevant codes, and with Manufacturers' recommendations and instructions. Do not scale from drawings.
Verify all dimensions on site prior to construction.
The drawing is copyright and may not be used without written consent from ARCLAB PTY LTD.

Drawn	Scale	Sheet	Date	Job N°.	Sheet N°	Issue/Revision
RGM	1 : 100	A 3	14.8.19	0155-19	013-S4.55	

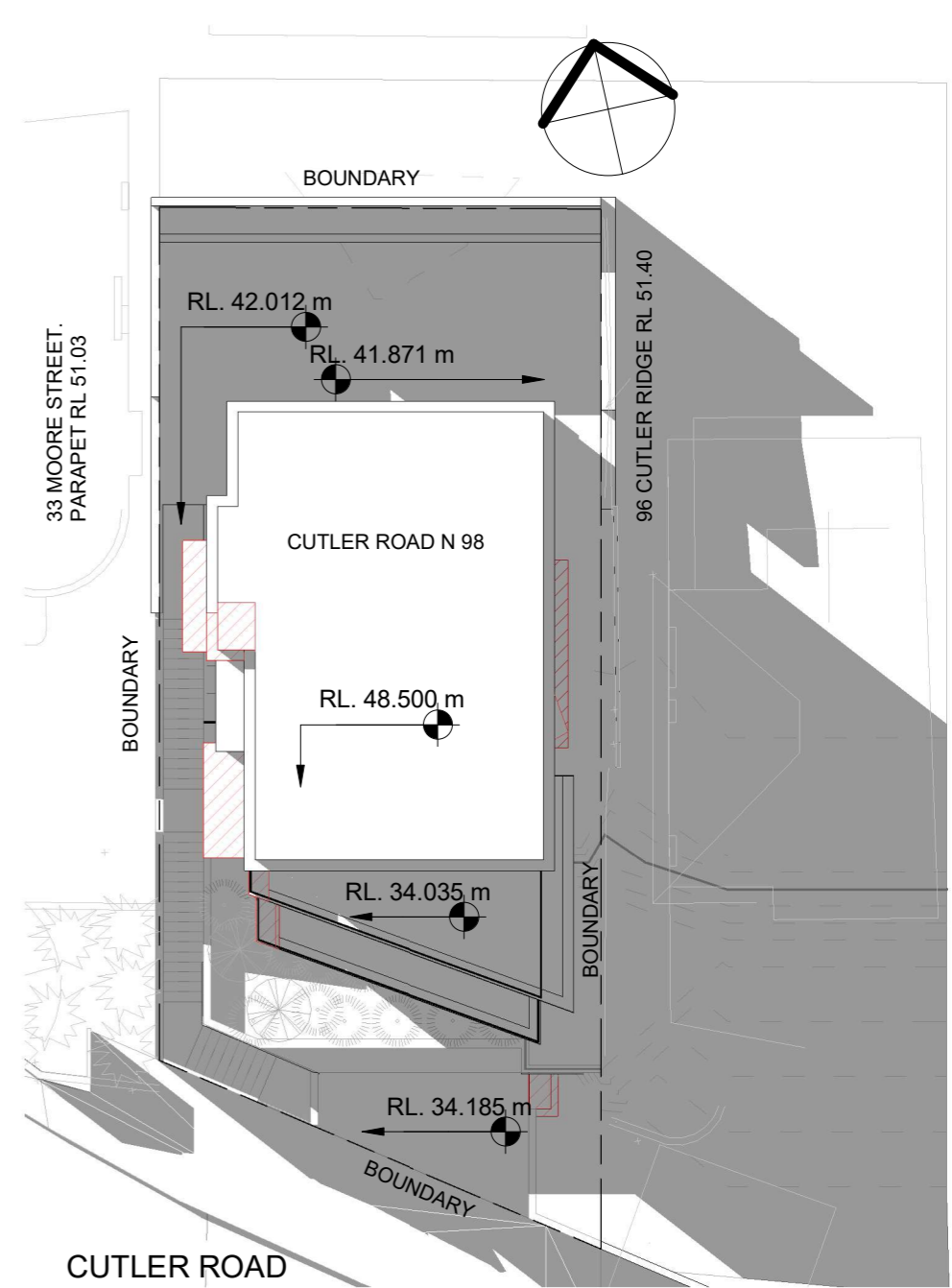




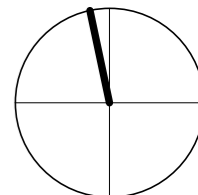
1 22 JUNE 09 AM
1 : 200

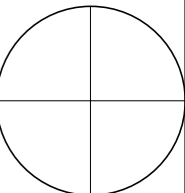


2 22 JUNE 12 PM
1 : 200



3 22 JUNE 03 PM
1 : 200





CUTLER ROAD

