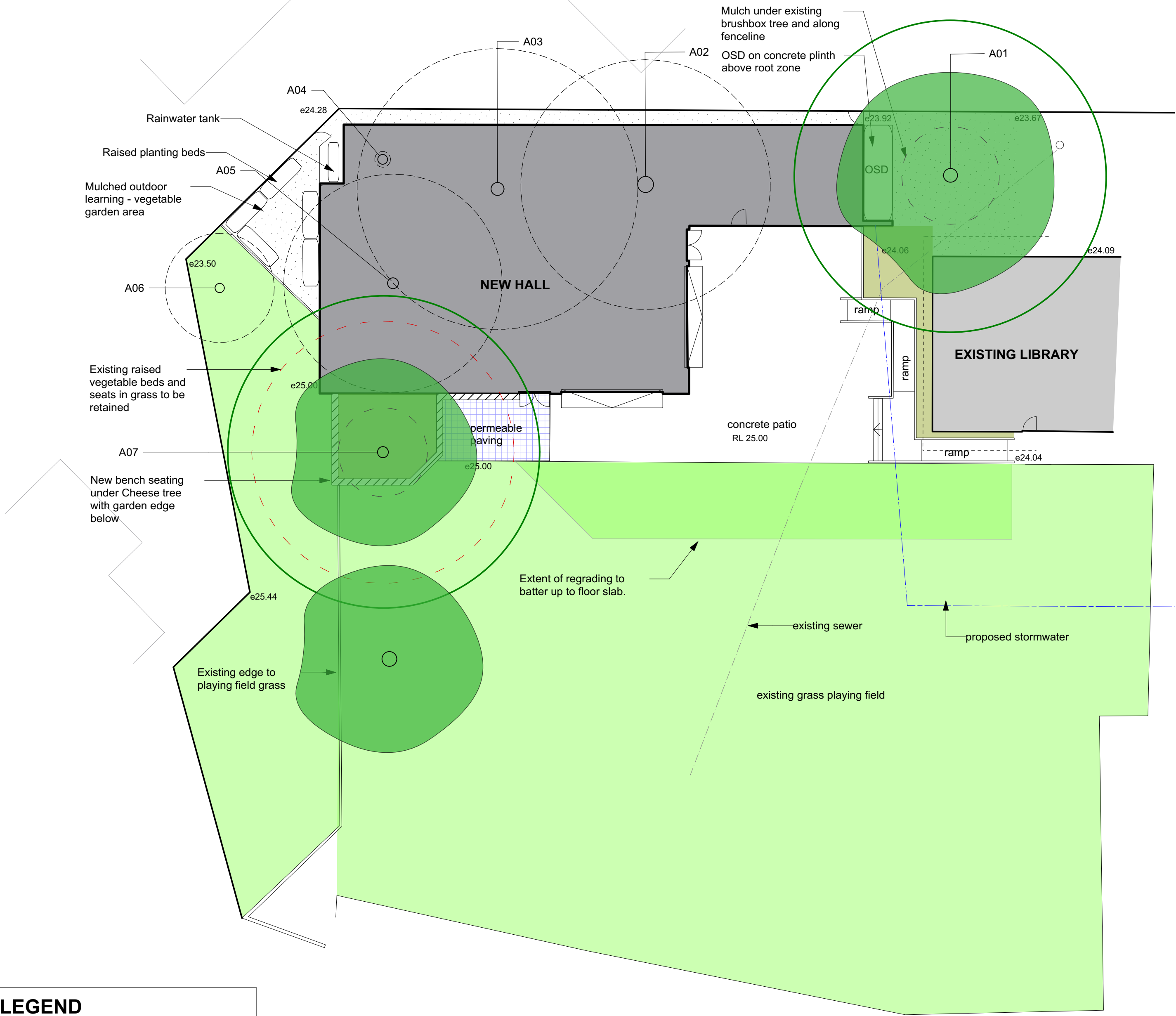
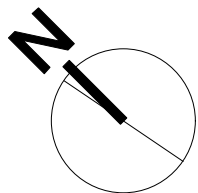
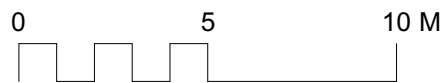


Existing Tree Report							
ID	Botanical Name	Common Name	Height	DBH	SULE	Action	Notes
A00	Lophostemon confertus	Brushbox	5000	955	Not Set	Retain	
A01	Lophostemon confertus	Brushbox	9000	890	2	Retain	
A02	Lophostemon confertus	Brushbox	10000	1030	2	Remove	removed for building footprint
A03	Lophostemon confertus	Brushbox	10000	830	2	Remove	removed for building footprint
A04	Dead tree		7000	620	4A	Remove	dead tree
A05	Lophostemon confertus	Brushbox	8000	700	2	Remove	removed for building footprint
A06	Robinia Pseudoacacia	Golden Robinia	6000	590	4C	Remove	Declining health. WH&S concerns
A07	Glochideon ferdinandi	Cheese Tree	10000	700	3	Retain	

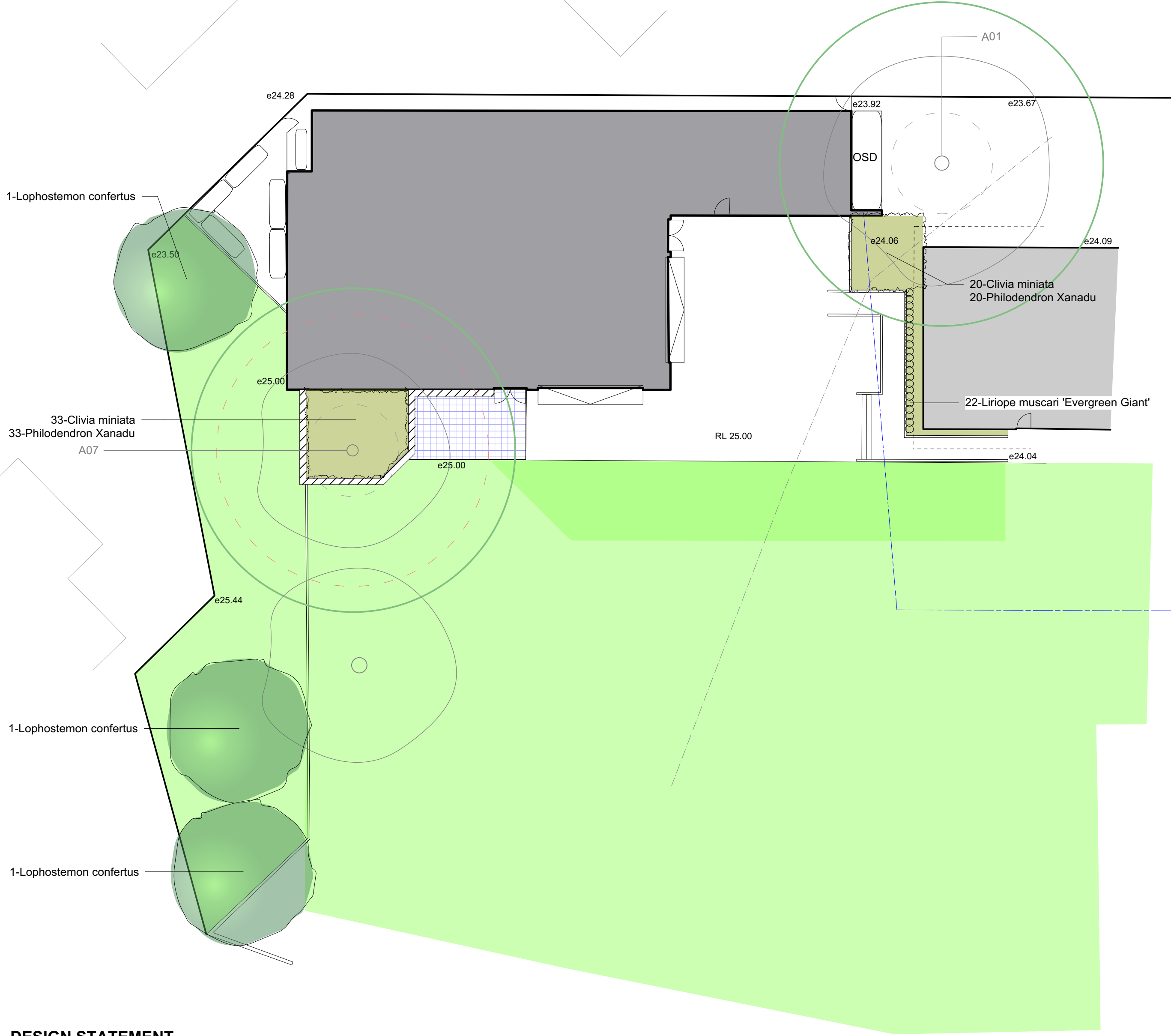


LEGEND	
	Mass planting bed- organic mulch
	Mulch
	Turf grass
	Concrete edge
	Bench seat
	Permeable interlocking unit paving



EXISTING TREE AND SITE PLAN

Plant List				
ID	Qty	Common Name	Botanical Name	Scheduled Size
Trees				
Lop con	3	Brush Box	Lophostemon confertus	200 litre
Shrubs				
Phi Xan	53	Xanadu	Philodendron Xanadu	5 litre
Grasses				
Lir Eve	22	Evergreen Giant Lilyturf	Liriope muscari 'Evergreen G	150mm
Perennials				
Cli min	53	Bush Lily	Clivia miniata	5 litre



DESIGN STATEMENT

The Hall is located in the most suitable location for the functionality of the School. Wherever it was to be located, (other than in the middle of the only open grass area the school has), several large trees would need to be removed. The Hall will require three Brushbox trees to be removed. The Brushbox in the immediate vicinity of the heritage building, and closer to the street, provide the vegetated backdrop visible from Pittwater Road and these trees get less visually significant the further into the school the trees are located. Three new Brushbox trees (Lophostemon conferta) will be planted along the rear boundary of the School. These have been located to eventually reach a height to create a visual backdrop to the new Hall from Pittwater Road, while being sufficiently distant from school and adjacent neighbouring buildings.

Tree protection measures have been adopted to ensure the existing Cheese Tree (Glochidon ferdinandi) will be protected from Hall development, with permeable paving, a border of seating and planting where there is currently compacted soil. Proposed planting will all be shade tolerant species and will be watered from the rainwater tanks installed with Hall.

New services have been located away from TPZ of existing trees.

PLANTING PLAN

