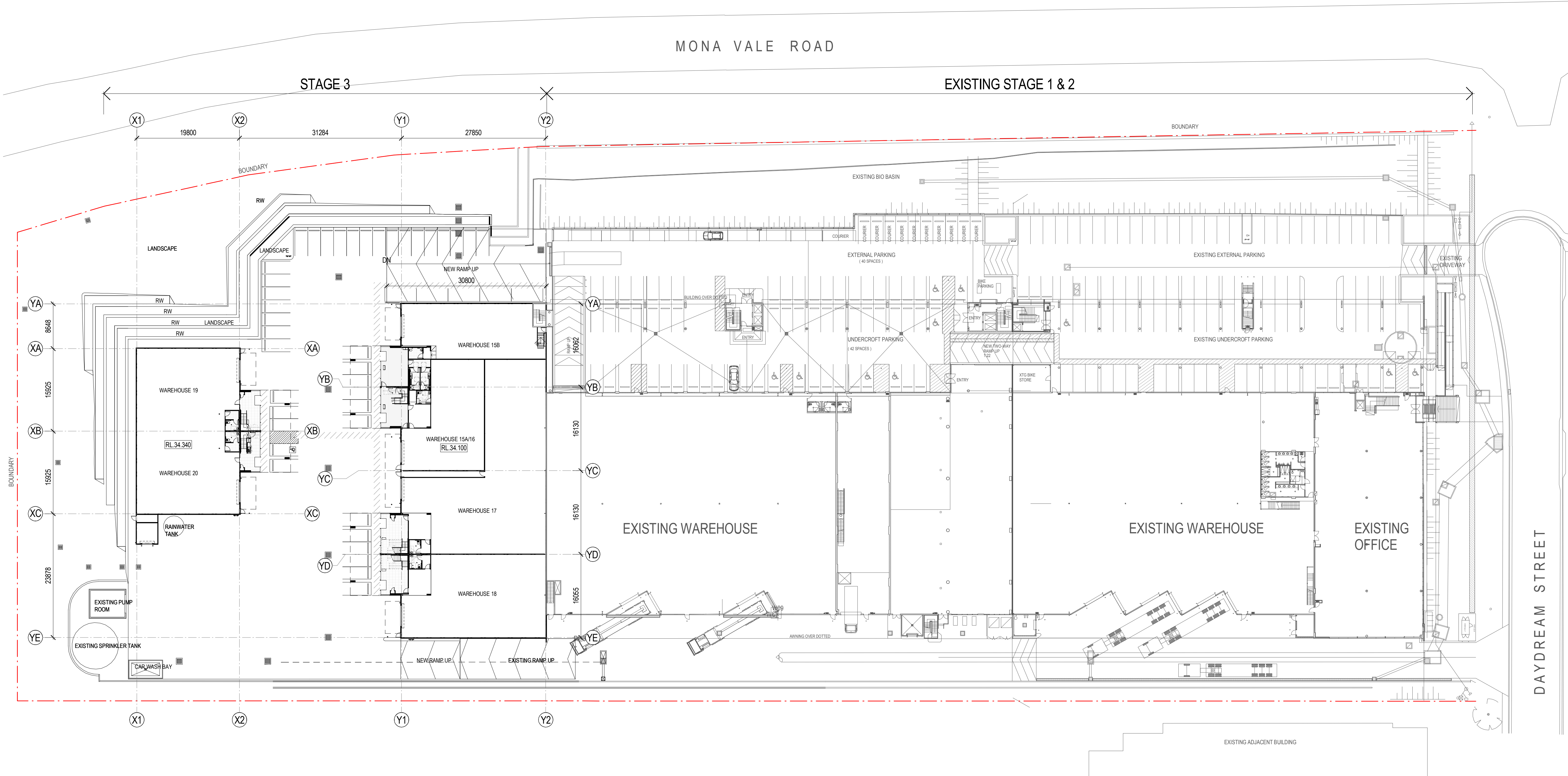


MONA VALE ROAD

STAGE 3

EXISTING STAGE 1 & 2



1 SITE PLAN - OVERALL 1:400

GA301

F	Issued for As Built	26.02.19
E	Amended Issue for Construction	01.02.18
	1. Tea Area & Under Star Store added	
	2. Wall (PCP) & Columns deleted & Bolards added	
	3. Unisex WC & Ramp added	
D	Amended for Construction	06.07.17
	1. Line 15.8.16 amended	
C	Amended for Construction	05.05.17
B	Amended for Construction	26.04.17
	1. Window amended	
	2. Internal wall adjusted	
	3. Roller shutter and roll door amended	
A	Issue for Construction	31.01.17
P3	Issue for Construction Certificate	16.12.16
P1	Preliminary For Coordination	24.10.16
P2	Preliminary For Coordination	28.11.16
ISSUE DESCRIPTION		DATE

SB
ARCHITECTS

Commercial Interior Design
Suite 702, 83 Mount Street, North Sydney NSW 2060
T 02 9529 9698 F 02 9529 9699
E info@ssearch.com.au W www.ssearch.com.au

CLIENT

FDC

FDC CONSTRUCTION & FITOUT PTY LTD



THIS PLAN IS TO BE READ IN
CONJUNCTION WITH
THE CONDITIONS OF DEVELOPMENT
CONSENT

DA2020/0230

PROJECT
PENINSULA BUSINESS
ESTATE STAGE 3
2 DAYDREAM STREET WARWICKWOOD
TITLE
SITE PLAN

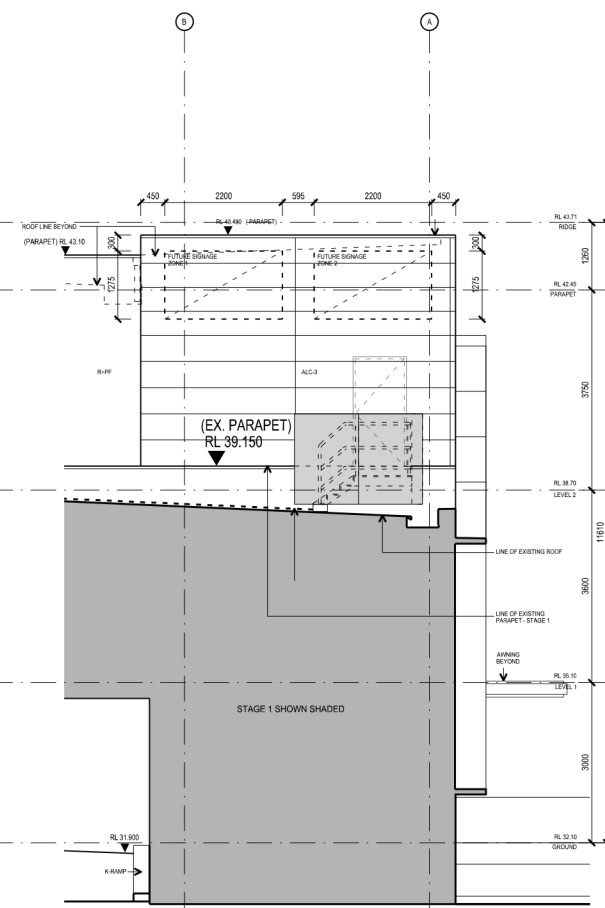
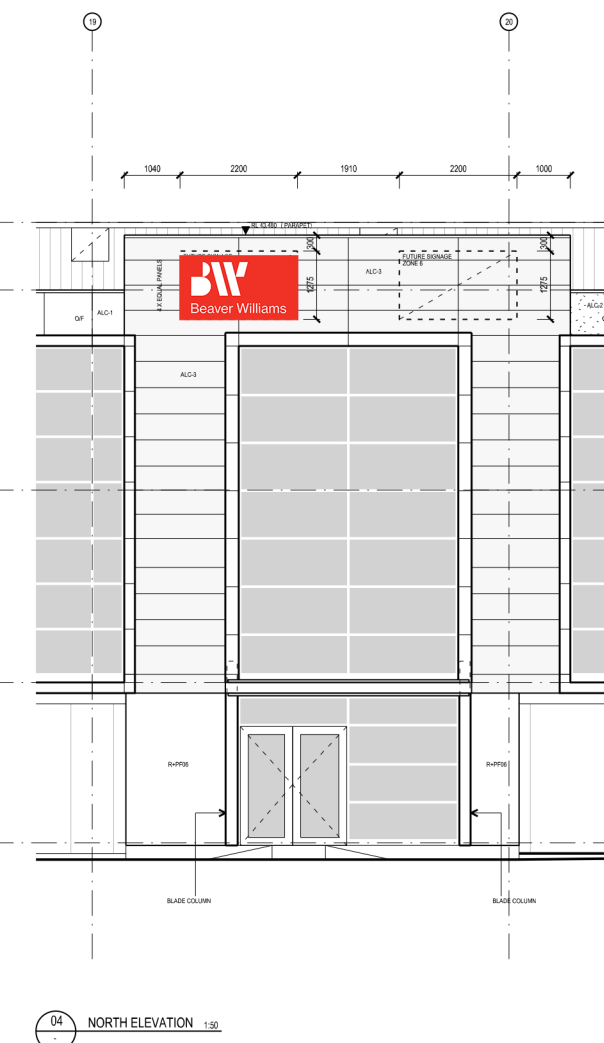
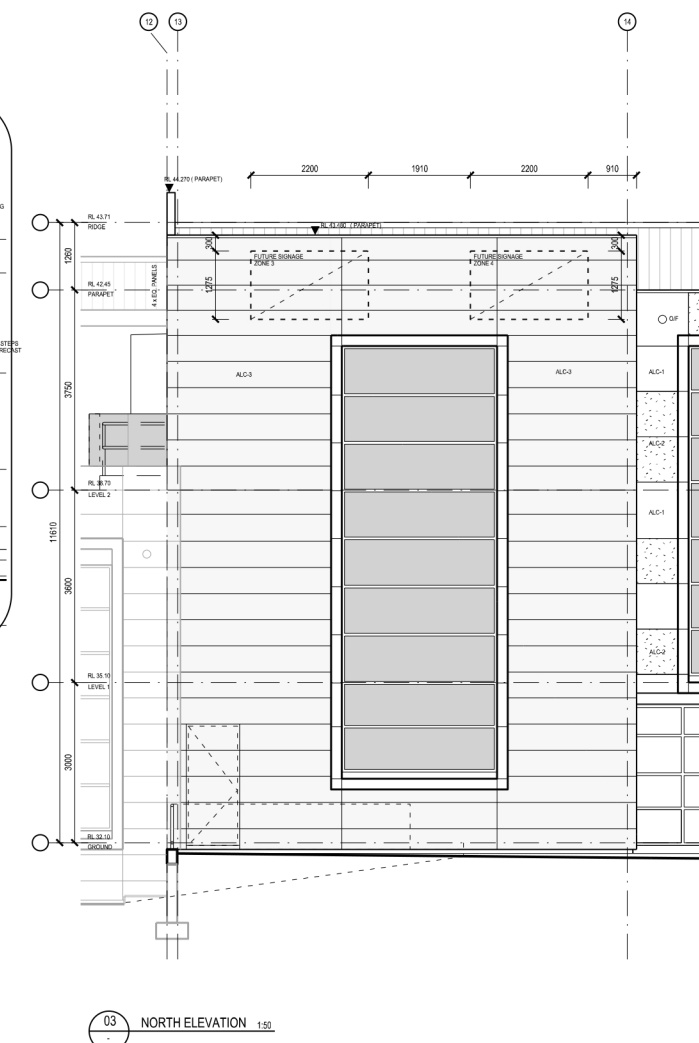
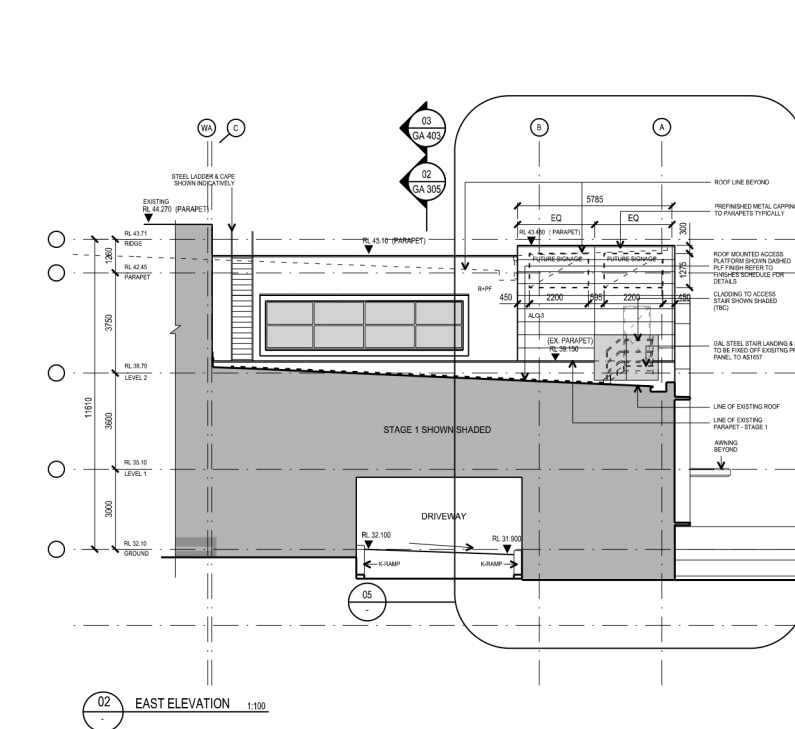
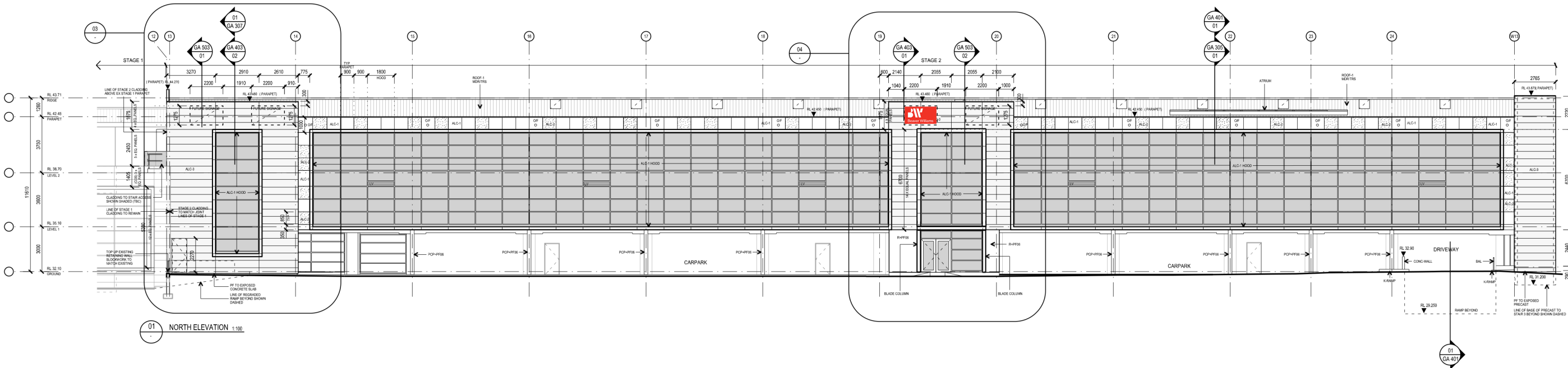
DATE FEB 2019 PROJECT No.
SCALE 1:400 @A1 15156
DRAWN SBA DWG No. ISSUE
CHECKED GA101 F
APPROVED

AS BUILT

LEGEND:

- GLAZING
- ALC - TYPE 1
- ALC - TYPE 2
- ALC - TYPE 3
- POLYCARBONATE

NOTE: REFER TO FINISHES SCHEDULE FOR DETAILS



THIS PLAN IS TO BE READ IN CONJUNCTION WITH THE CONDITIONS OF DEVELOPMENT CONSENT

DA2020/0230

ISSUE	REV	DESCRIPTION	DATE
A	1	FOR INFORMATION	01.06.15
B	1	FOR INFORMATION	01.06.15

ARCHITECT **SBA ARCHITECTS**

Commercial Industrial Residential Retail Interior Design

Suite 702, 83 Mount Street, North Sydney NSW 2060
T 02 9529 9880 F 02 9529 8869
E info@sba-arch.com.au W www.sba-arch.com.au

CLIENT

FDC

FDC CONSTRUCTION & FITOUT PTY LTD

PROJECT **PENINSULA BUSINESS ESTATE DAYDREAM STREET WARRIEWOOD**

TITLE **ELEVATIONS - SIGNAGE LOCATIONS**

DATE	JUNE 2014	PROJECT No.	
SCALE	1:100@A0		14174
DRAWN	SBA		
CHECKED		DWG No.	SK-265
APPROVED		ISSUE	/B