

REFER TO GENERAL NOTES FOR THE FOLLOWING:

- GENERAL AND CONSTRUCTION NOTES
- ABBREVIATIONS
- NOTATIONS
- SYMBOLOGY

1	16.10.22	ISSUED FOR INFORMATION		

Rev	Date	Description	By	Chk.
-----	------	-------------	----	------

[illegible]

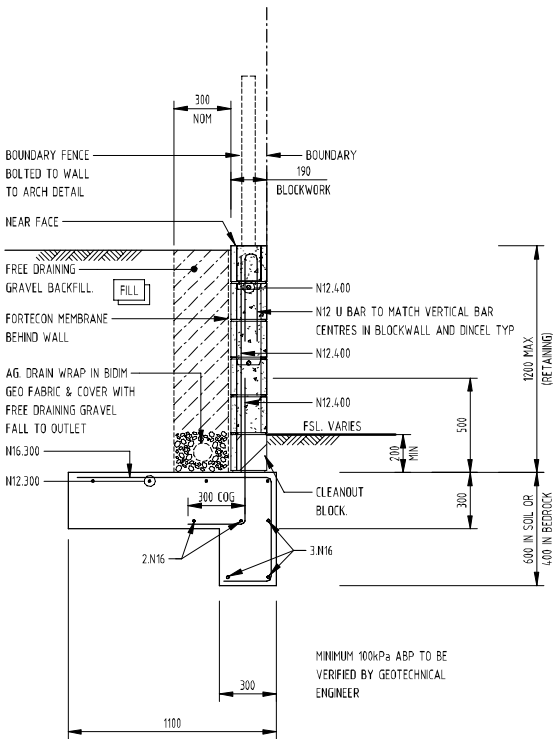
4 BRISBANE PL, CROMER, 2099

Drawing No.	Revision
S-2024	1

PROVIDE 200 DINCEL WALL IN LIEU OF BLOCKWORK WITH REINF AND STARTER BARS

1. FOR 1800 MAX HEIGHT	- N12-300 VERTICAL NEAR FACE (AS OBSERVED FROM FILL SIDE)
	- N12-300 HORIZONTAL CENTRAL
2. FOR 2500 MAX HEIGHT	- N16-300 VERTICAL NEAR FACE (AS OBSERVED FROM FILL SIDE)
	- N12-300 HORIZONTAL CENTRAL

1. REFER TO ARCHITECTURALS FOR RETAINING WALL HEIGHTS
2. MAXIMUM SURCHARGE LIVELOAD: 5.0kPa
3. MINIMUM COVER: FOOTINGS: 50mm ALL AROUND
BLOCKWALLS: 50mm (MEASURED FROM EXTERNAL)
DINCEL: 30mm
4. CONCRETE STRENGTH: BASE: N32
DINCEL: N32
BLOCK: REFER TO GENERAL NOTES.



20.23.1
TYP

1200 MAX HEIGHT
SCALE 1:20