

**SHOPPING CENTRES**  
**SUMMARY LEASING PLAN**

**GROUND FLOOR**  
**WARRINGAH MALL**

Pittwater Road, Brookvale.

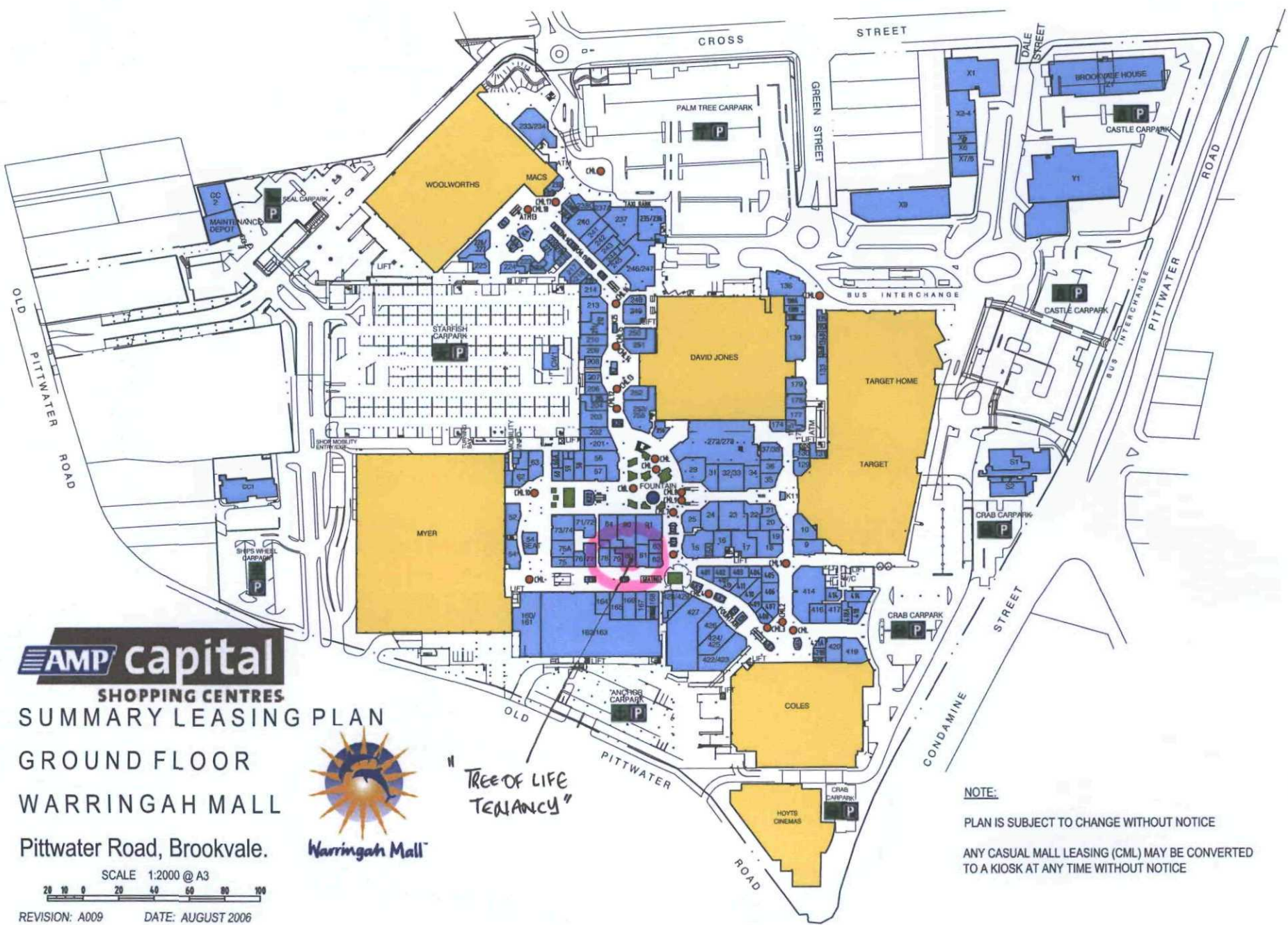


Warringah Mall

SCALE 1:2000 @ A3  
20 10 0 20 40 60 80 100

REVISION: A009 DATE: AUGUST 2006

"TREE OF LIFE  
TENANCY"



NOTE:

PLAN IS SUBJECT TO CHANGE WITHOUT NOTICE

ANY CASUAL MALL LEASING (CML) MAY BE CONVERTED  
TO A KIOSK AT ANY TIME WITHOUT NOTICE

CC 2010/0211  
PCA 2010/0259

TREE OF LIFE  
TENANCY 80  
WARRINGAH MALL

GENERAL NOTES

ALL FINISHES, MATERIALS AND CONSTRUCTION TO COMPLY WITH BUILDING CODE AUSTRALIA, AUSTRALIAN STANDARDS, STATUTORY AND LOCAL AUTHORITY REQUIREMENTS.

ALL STRUCTURAL DETAIL TO MANUFACTURES OR ENGINEERS SPECIFICATIONS.

CONTRACTOR TO PROVIDE CERTIFICATION TO VERIFY ALL FLOOR FINISHES INSTALLED AND COMPLY WITH ANY REQUIRED SLIP RESISTANCE REQUIREMENTS.

CONTRACTOR TO ENSURE CONSISTENCY BETWEEN SIMILAR MATERIALS IS MAINTAINED.

CONTRACTOR TO NOTIFY CLIENT OF ANY NECESSARY VARIATIONS TO DESIGN PRIOR TO MANUFACTURE.

CONCEAL ALL FIXINGS AND SCREWS UNLESS INSIDE JOINER UNITS.

PREPARE AND MAKE GOOD ALL SURFACE AND PROVIDES REQUIRED SUBSTRATES TO RECEIVE NEW FINISHES AS PER MANUFACTURERS SPECIFICATIONS.

ALL JUNCTIONS OF CHANGING FLOORS FINISHES TO SIT FLUSH WITH EACH OTHER ALLOW BUILD UP OF FLOOR IF REQUIRED TO ACHIEVE FLUSH JUNCTIONS.

MECHANICAL LAYOUT TO BE VERIFIED BY CERTIFIED ENGINEER.

ALL FIRE PROTECTION LAYOUTS AND DEVICES TO BE VERIFIED BY CERTIFIED ENGINEER.

CHECK LOCATION OF ALL EXISTING SERVICES ON SITE.


CHECK ALL DIMENSIONS ON SITE PRIOR TO CONSTRUCTION.

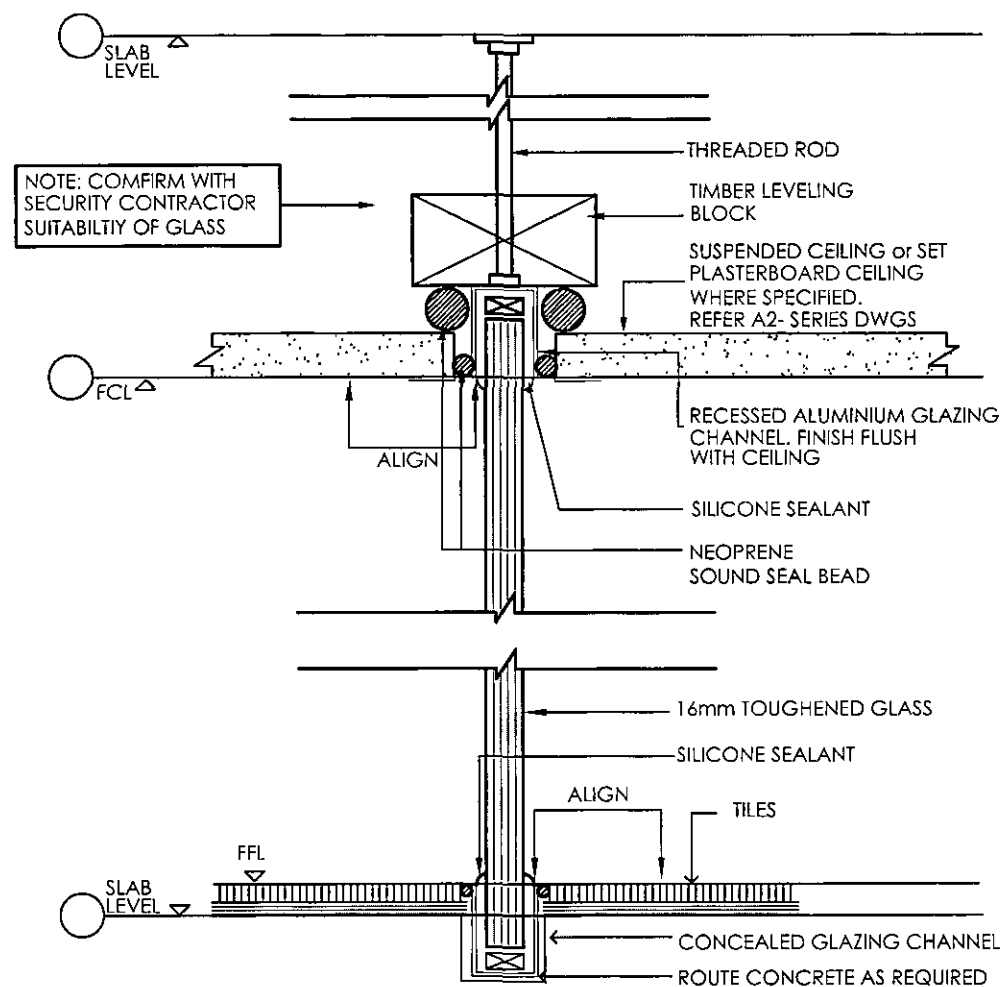
CONSTRUCTION JOINTS MUST BE MAINTAINED IN ALL INTERNAL FINISHES AND FIXTURES.

INTERTENANCY WALLS MUST BE REINFORCED OR CERTIFIED BY A STRUCTURAL ENGINEER IF TO BE USE TO SUPPORT SHELVINGS OR DISPLAYS.

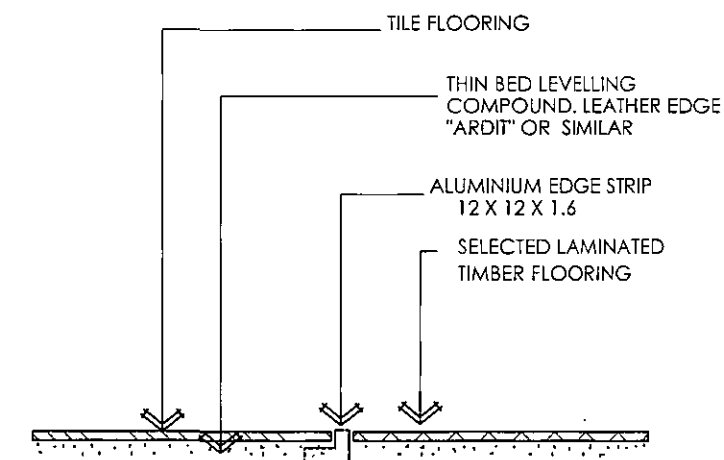
A 3MM POLISHED STAINLESS STEEL EDGE STRIP MUST BE INSTALLED AT THE JUNCTION OF CONCOURSE FLOOR TO TENANTS FLOOR.

WARRINGAH COUNCIL  
THIS PLAN TO BE READ  
IN CONJUNCTION WITH  
Construction  
Certificate No. CC200/02/11

					<p>Contractor to verify all dimensions on site before commencing work. Innova Design is to be notified of any discrepancies in dimensions and setting out of work for resolution. Copyright of designs shown hereon is retained by this office. Authority is required for any reproduction.</p>	Client: TREE-OF-LIFE FRANCIS-BORTHWICK	Project: TREE-OF-LIFE TENANCY-80 WARRINGAH-MALL	NORTH	Filename: I:\BBRAUST\CURR\TOLWRGHML\DC\IN100108		
									Date: 19.02.10	Scale: 1:50@A3	Job No: IN100108
									Drawn By: MC	Reviewed By: MC	Approved By: MC
									Design By: MC	Issue: A	Drawing No: 100
									Project Manager: PB		
02.03.10	A	MC	FINAL DOCUMENTATION PACKAGE FOR LANDLORD APPROVAL								
Date	Issue	Drawn	Amendment				Title: COVER_PAGE				




01 SHOPFRONT GLAZING DETAIL  
SECTIONAL DETAIL SCALE: 1:2 @ A3



02 FLOOR JUNCTION DETAIL - ENTRY TO TENANCY  
SECTION SCALE: 1:2 @ A3

**WARRINGAH COUNCIL**  
THIS PLAN TO BE READ  
IN CONJUNCTION WITH  
Construction  
Certificate No. *CC 2010/0211*

<div>02.03.10</div> <div>A</div> <div>MC</div> <div>FINAL DOCUMENTATION PACKAGE FOR LANDLORD APPROVAL</div>	<div>  </div> <div> <small>Contractor to verify all dimensions on site before commencing work. Innova Design is to be notified of any discrepancies in dimensions and setting out of work for resolution. Copyright of designs shown hereon is retained by this office. Authority is required for any reproduction.</small> </div>	<div>Client: TREE-OF-LIFE FRANCIS-BORTHWICK</div> <div>Project: TREE-OF-LIFE TENANCY-80 WARRINGAH_MALL</div> <div>Title: PARTITION_DETAILS</div>	<div>NORTH</div>	<div> <small>Filename: I:\BBAUST\CURR\TOLWRGHML\DC\IN100108</small>  <small>Date: 02.03.10 Scale: 1:50@A3 Job No: IN100108</small>  <small>Drawn By: MC Reviewed By: MC Approved By: MC</small>  <small>Design By: MC Issue: A Drawing No: 302</small>  <small>Shopfile: PB</small> </div>
---	---	--	------------------	--



PLEASE REFER TO  
 DWG 301 FOR PARTITION AND DETAILS  
 DWG 401 FINISHES LAYOUT  
 DWG 501 RCP  
 DWG 701 ELEVATION  
 DWG 801 JOINERY  
 DWG 901 SIGNAGE

C13

NOTE: ALL EXISTING LIGHTS IN STORE TO BE REPLACED WITH NEW FITTINGS TO COMPLY WITH SECTION J REGULATIONS OF BCA

C15

## GENERAL CEILING NOTES

CONTRACTORS TO CONFIRM ALL LOCATIONS & REQUIREMENTS OF CEILING SERVICES & SPRINKLERS ALLOW TO REMAIN WHERE POSSIBLE

ALLOW CEILING ACCESS HOLES WHERE REQUIRED CONFIRM WITH CENTRE MANAGEMENT

ALL FITTINGS TO BE RECESSED

## GENERAL CEILING LEGEND

THIS DRAWING TO BE READ IN CONJUNCTION WITH CEILING DETAIL DRAWINGS

- LF1 64W COMPACT FLUORESCENT DOWNLIGHT CONTRACTOR TO SOURCE FITTING FITTING TO BE FULLY RECESSED
- LF2 35W CDMR111 DIRECTIONAL METAL HALIDE 24 DEGREE BEAM 3000K COL. TEMP CONTRACTOR TO SOURCE FITTING FITTING TO BE FULLY RECESSED
- LF3 70W CDMR111 DIRECTIONAL METAL HALIDE 24 DEGREE BEAM 3000K COL. TEMP CONTRACTOR TO SOURCE FITTING FITTING TO BE FULLY RECESSED

- LF4 70W DIRECTIONAL METAL HALIDE 3000K COL. TEMP CONTRACTOR TO SOURCE FITTING FITTING TO BE FULLY RECESSED & RECTANGULAR
- LF5 2 X 28W T5 FLUORESCENT LIGHTING ENCLOSED BATTEN
- LF6 2 X 35W CDMR111 DIRECTIONAL METAL HALIDE 24 DEGREE BEAM 3000K COL. TEMP IN DESIGNER'S SPECIFIED FITTING REFER TO LIGHTING SCHEDULE FOR DETAILS

NOTE: ALL EXISTING LIGHTS IN STORE TO BE REPLACED WITH NEW FITTINGS TO COMPLY WITH SECTION J REGULATIONS OF BCA

NOTE: ALL EXISTING LIGHTS IN STORE TO BE REPLACED WITH NEW FITTINGS TO COMPLY WITH SECTION J REGULATIONS OF BCA

NEW "LF4" GENERAL 70W MERIDAN WALL WASHER FROM AMBIENCE LIGHTING

NOTE: ALL EXISTING LIGHTS IN STORE TO BE REPLACED WITH NEW FITTINGS TO COMPLY WITH SECTION J REGULATIONS OF BCA

PAINT EXISTING BULKHEAD IN "P1" FALCON GREY

NEW "LF4" GENERAL 70W MERIDAN WALL WASHER FROM AMBIENCE LIGHTING

NOTE: ALL EXISTING LIGHTS IN STORE TO BE REPLACED WITH NEW FITTINGS TO COMPLY WITH SECTION J REGULATIONS OF BCA

EXISTING DOWNLIGHTS TO BE TAKEN OUT AND CEILING PATCHED AND MADE GOOD

NOTE: ALL EXISTING LIGHTS IN STORE TO BE REPLACED WITH NEW FITTINGS TO COMPLY WITH SECTION J REGULATIONS OF BCA

FULLY RECESSED TRACK FOR DYNAMIC DOOR

01 RCP PLAN

SCALE: 1:50 @ A3

WARRINGAH COUNCIL  
 THIS PLAN TO BE READ  
 IN CONJUNCTION WITH

Construction  
 Certificate No. *cc2010/0211*

Date	Issue	Drawn	Amendment
03.03.10	C	MC	FINAL DOCUMENTATION PACKAGE FOR LANDLORD APPROVAL
02.03.10	B	MC	FINAL DOCUMENTATION PACKAGE FOR LANDLORD APPROVAL
19.02.10	A	MC	PRELIMINARY



Contractor to verify all dimensions on site before commencing work.  
 Innova Design is to be notified of any discrepancies in dimensions and setting out of work for resolution.  
 Copyright of designs shown hereon is retained by this office.  
 Authority is required for any reproduction.

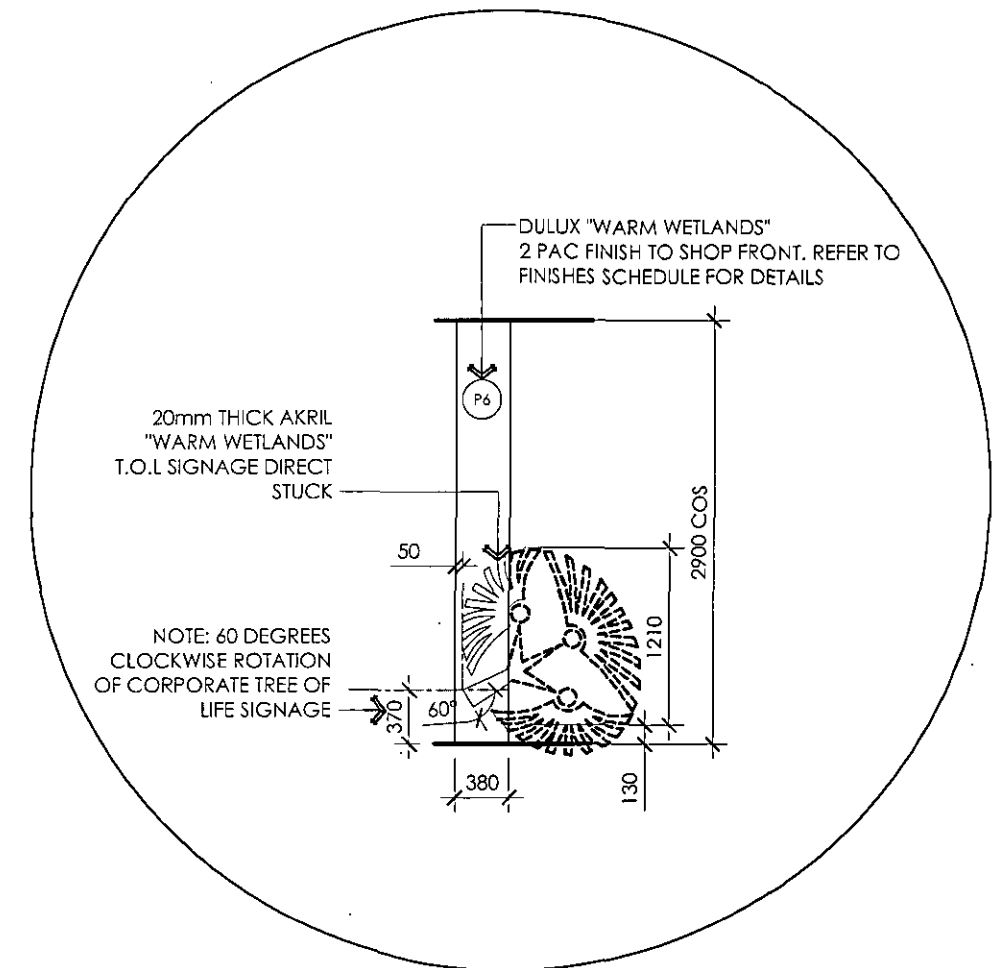
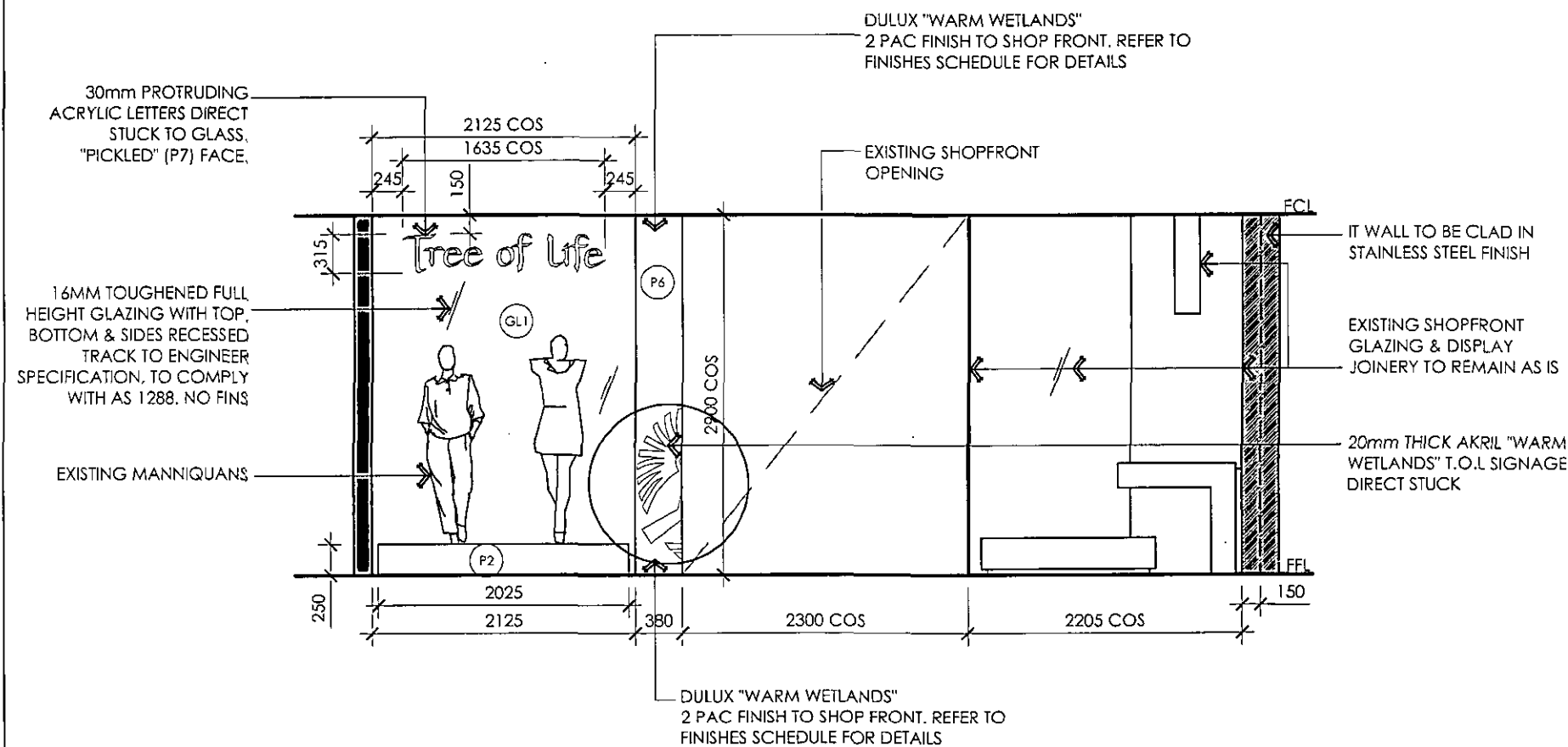
Client: TREE-OF-LIFE  
 FRANCIS-BORTHWICK

Project: TREE-OF-LIFE  
 TENANCY-80  
 WARRINGAH\_MALL

Title: REFLECTED\_CEILING\_PLAN


NORTH

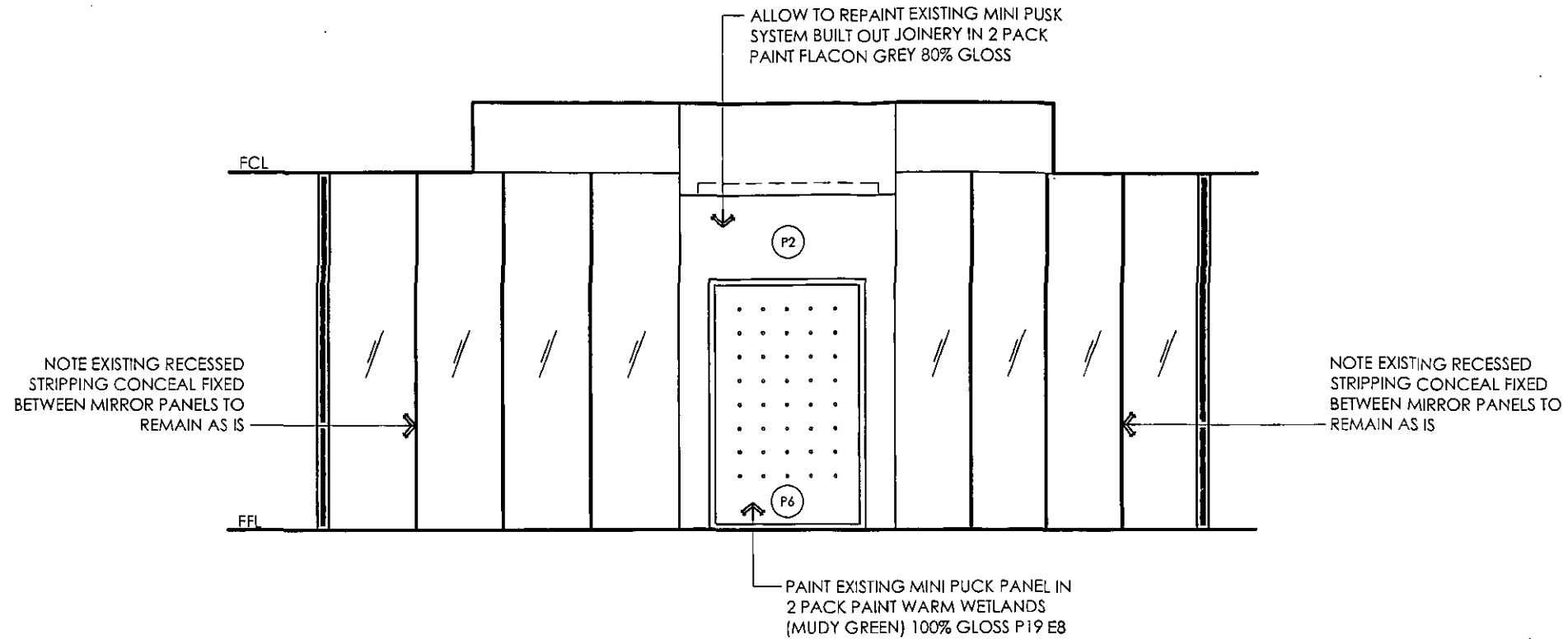
Filename: I:\BBAUST\CURRYTOLWRGHML\DC\IN100108	Date: 03.03.10	Scale: 1:50@A3	Job No: NO100108
Drawn By: MC	Reviewed By: MC	Approved By: MC	
Design By: MC	Issue: C	Drawing No: 501	
Project Manager: PB			



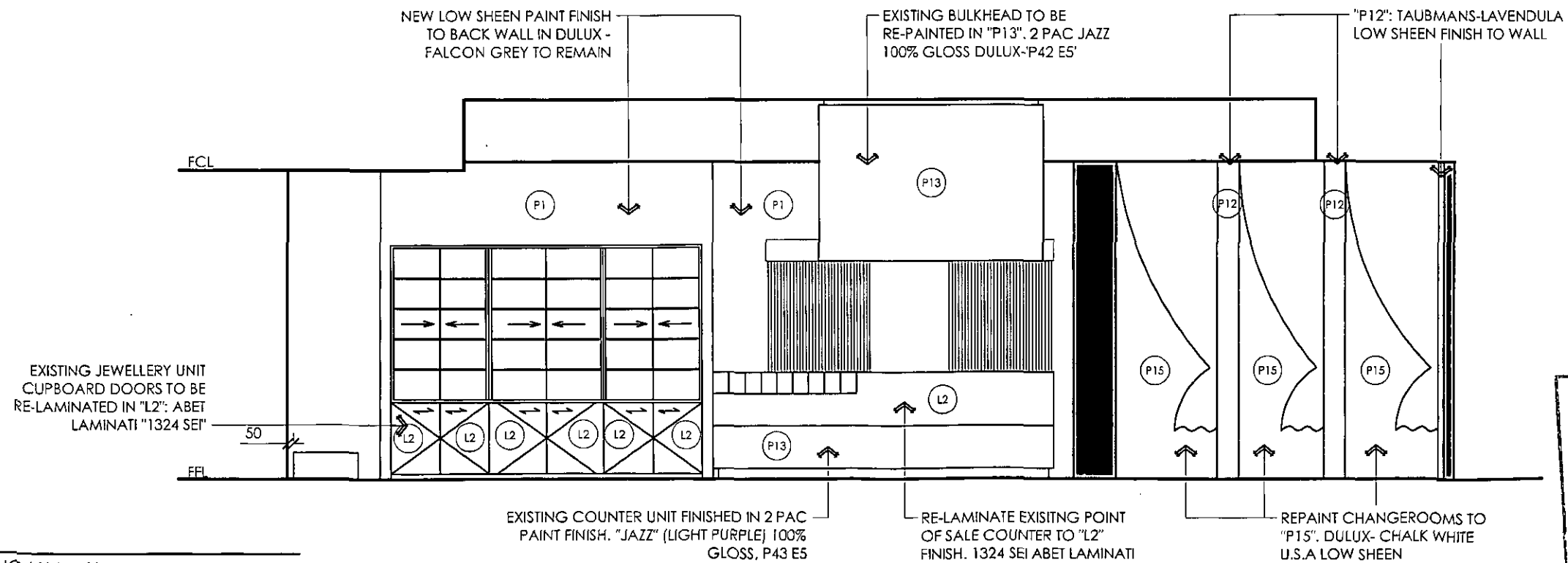
**A** SHOPFRONT  
TREE OF LIFE WARRINGAH MALL  
SCALE: 1:50 @ A3

**WARRINGAH COUNCIL**  
THIS PLAN TO BE READ  
IN CONJUNCTION WITH  
Construction  
Certificate No. *CC2010/0241*

					<small>Contractor to verify all dimensions on site before commencing work. Innova Design is to be notified of any discrepancies in dimensions and telling out of work for resolution. Copyright of designs shown hereon is retained by this office. Authority is required for any reproduction.</small>	<b>Client:</b> TREE-OF-LIFE FRANCIS-BORTHWICK	<b>Project:</b> TREE-OF-LIFE TENANCY-80 WARRINGAH_MALL	<b>Title:</b> SHOPFRONT_ELEVATION	<b>North</b>	<small>Filename: I:\BBAUST\CURR\TOLWRGHML\DC\IN100108</small>			
02.03.10	B	MC	FINAL DOCUMENTATION PACKAGE FOR LANDLORD APPROVAL							<small>Date:</small> 02.03.10	<small>Scale:</small> 1:50@A3	<small>Job No:</small> INO100108	
19.02.10	A	MC	PRELIMINARY							<small>Drawn By:</small> MC	<small>Reviewed By:</small> MC	<small>Approved By:</small> MC	
Date	Issue	Drawn	Amendment							<small>Design By:</small> MC	<small>Issue:</small> B	<small>Drawing No:</small> 701	



**C** SECTION  
TREE OF LIFE WARRINGAH MALL SCALE: 1:50 @ A3



**B** ELEVATION  
TREE OF LIFE WARRINGAH MALL SCALE: 1:50 @ A3

**WARRINGAH COUNCIL**  
THIS PLAN TO BE READ  
IN CONJUNCTION WITH  
Construction  
Certificate No. *CC2010/021*

Date	Issue	Drawn	Amendment
02.03.10	B	MC	FINAL DOCUMENTATION PACKAGE FOR LANDLORD APPROVAL
19.02.10	A	MC	PRELIMINARY



Contractor to verify all dimensions on site before commencing work.  
Innova Design is to be notified of any discrepancies in dimensions and setting  
out of work for resolution.  
Copyright of designs shown hereon is retained by this office.  
Authority is required for any reproduction.

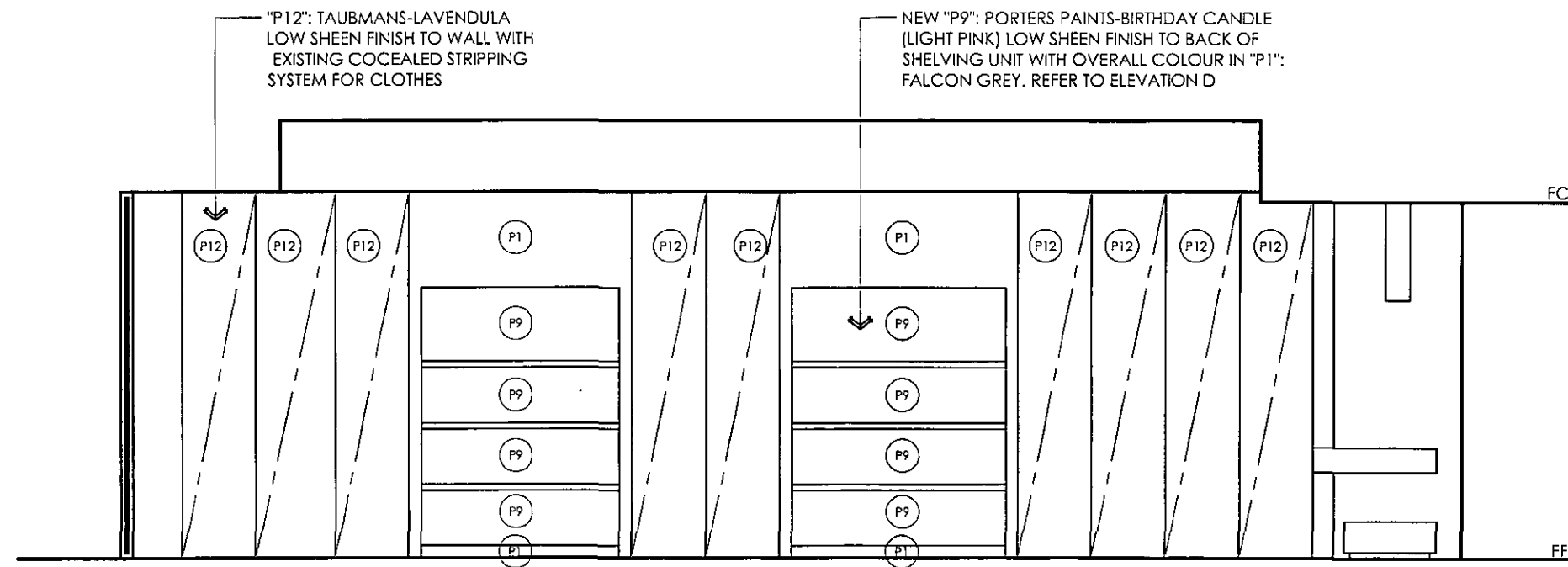
Client: TREE-OF-LIFE  
FRANCIS-BORTHWICK

Project: TREE-OF-LIFE  
TENANCY-80  
WARRINGAH\_MALL

Title: ELEVATION\_B&C

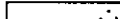
NORTH

Filename: I:\BBAUST\CURR\TOLWRGHML\DC\IN100108	Date: 02.03.10	Scale: 1:50@A3	Job No: INO100108
Drawn By: MC	Reviewed By: MC	Approved By: MC	
Design By: MC	Issue: B	Drawing No: 702	
Project Manager: PB			



**D** ELEVATION  
TREE OF LIFE WARRINGAH MALL SCALE: 1:50 @ A3

**WARRINGAH COUNCIL**  
THIS PLAN TO BE READ  
IN CONJUNCTION WITH  
Construction  
Certificate No. *CC2010/0211*

				 <small>innovate. inspire. achieve.</small>	<p>Contractor to verify all dimensions on site before commencing work. innova Design is to be notified of any discrepancies in dimensions and setting out of work for resolution. Copyright of designs shown hereon is retained by this office. Authority is required for any reproduction.</p>	Client: TREE-OF-LIFE FRANCIS-BORTHWICK	Project: TREE-OF-LIFE TENANCY-80 WARRINGAH_MALL	Title: ELEVATION_D	NORTH	Filename: I:\BBRAUST\CURR\TOLWRGHML\DC\IN100108		
										Date: 02.03.10	Scale: 1:50@A3	Job No: NO100108
										Drawn By: MC	Reviewed By: MC	Approved By: MC
										Design By: MC	Issue: B	Drawing No: 703
										Project Manager: PB		
02.03.10	B	MC	FINAL DOCUMENTATION PACKAGE FOR LANDLORD APPROVAL									
19.02.10	A	MC	PRELIMINARY									
Date	Issue	Drawn	Amendment									

**DOOR LEGEND**

**IN100108 TREE OF LIFE**  
TENANCY 80 WARRINGAH MALL



**INNOVA DESIGN SOLUTIONS**  
LEVEL 7 630 GEORGE ST SYDNEY NSW AUSTRALIA 2000  
P. 02 9264 0899 F. 02 9283 0299  
Web: [www.innovadesign.com.au](http://www.innovadesign.com.au)

Revision:	Date:	Amendment:
A	02.03.10	ISSUED FOR FINAL LANDLORD APPROVAL

DOOR SCHEDULE LEGEND- ISSUE FOR INFORMATION TO BE READ IN CONJUNCTION WITH DWG 301

**DOOR TYPE**

DT1	SOLID CORE MDF DOOR- 30mm THICK x 900mm WIDE x 2200mm HIGH
DT2	SOLID CORE MDF DOOR- 30mm THICK x 820mm WIDE x 1800mm HIGH
DT3	SOLID CORE MDF DOOR- 30mm THICK x 885mm WIDE x 1800mm HIGH
DT4	EXISTING ROLLER SHUTTER WITH REMOVEABLE MULLIONS
DT5	FOLDING CLOSURE
DT6	FOLDING DOOR: LOTUS VINYL CLOTH FOLDING DOOR OR SIMILAR ANTIQUE WHITE BILDSPEC DISTRIBUTION MARRICKVILLE PH: 02 9519 3833

**LOCKSET TYPE**

L1	LOCKWOOD 002 DIGITAL DEADLATCH
L2	PRIVACY BOLT

**HINGE**

H1	3X BUTT HINGE- SAPHIRE ALUMINIUM HEAVY DUTY FAST FIX HINGE OR EQUIVALENT
H2	DORMA PIVOT HINGE - TS 73 V

**DOOR CLOSER**

NA

**DOOR STOP**

DS1	MADINOZ MDZ DS95 FINISH: SSF
-----	------------------------------

**HARDWARE**

HW1	PRIVACY SET: OUTSIDE = MADINOZ MDZ ZER INSIDE = MADINOZ MDZ ZTT
HW2	1366 OVAL CLYLINDER ESCUTCHEON TO OUTSIDE

**FRAME TYPE**

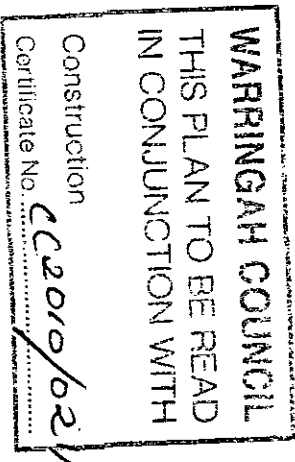
DF1	25X45 SLIMLINE NATURAL ANODISED
-----	---------------------------------

**ACCESSORIES**

A1	HAFELE COAT HOOKS. 842.49.600 1 TO OUTSIDE 3 TO INSIDE
A2	ANGLE SHOE PIVOT CONTACT: HOWARD STYLES 02 6232 6455/ <a href="http://WWW.ANGELSHOE.COM">WWW.ANGELSHOE.COM</a>

**SECURITY**

BUILDER TO ENSURE SECURITY TO FOLDING CLOSURE IS ADEQUATE  
BUILDER TO CONFIRM ABOVE SPECIFICATIONS ARE SUITABLE FOR DESIRED APPLICATION WITH HARDWARE SUPPLIER





**DOOR SCHEDULE-**  
**IN100108 TREE OF LIFE**  
 TENANCY 80 WARRINGAH MALL



INNOVA DESIGN  
 LEVEL 7 630 GEORGE ST SYDNEY NSW AUSTRALIA 2000  
 P. 02 9264 0899 F. 02 9283 0299  
 Web: www.innova.com.au

Revision:	Date:	Amendment:
A	02.03.10	ISSUED FOR FINAL LANDLORD APPROVAL

DOOR #	LOCATION	TYPE	LOCK	HINGE	CLOSER	STOP	HARDWARE	SECURITY	DOOR SIZE	DOOR FRAME	ACCESS	FINISH	COMMENTS
D-01	MAIN ENTRY	DT6	-	-	-	-	-	-	2300mm WIDE CLEAR OPENINGx2900mm HIGH	SOLID PANELS	-	-	REFER TO DWG 301 FOR REFERENCE





PAINT FINISHES

P3

P5

P7

P8

P9

P11

P12

P13

P14



L3

L4

SS

LAMINATES

L2

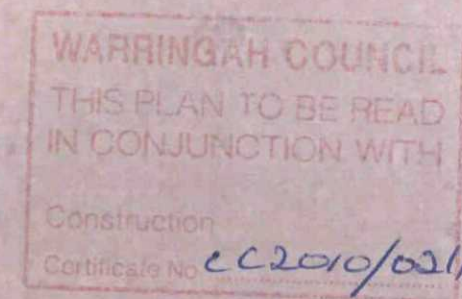
L1

F2

VINYL FLOORING

F1

TILE FLOORING



Tree of Life



## FINISHES SCHEDULE-

IN100108 TREE OF LIFE  
TENANCY 80 WARRINGAH MALL



INNOVA DESIGN  
LEVEL 7 630 GEORGE ST SYDNEY NSW AUSTRALIA 2000  
P. 02 9264 0899 F. 02 9283 0299  
Web: www.innova.com.au

Revision:	Date:	Amendment:
A	02.03.10	ISSUED FOR FINAL LANDLORD APPROVAL

FINISHES SCHEDULE LEGEND- ISSUE FOR INFORMATION TO BE READ IN CONJUNCTION WITH DWG 401  
PLEASE NOTE FINISHES CODES HAVE BEEN ALTERED - PLEASE REFER TO NEW FINISHES CODES

MATERIAL	LOCATION	CODE	PRODUCT	SUPPLIER	COMMENTS	REV	CLIENT SIGN-OFF
TILE	ENTRY	F1	CREAMIC TILE 400x400 ESF1112	AMBER-KINGSFORD PH: 02 9663 3863		A	
PAINT	WALLS	P1	FALCON GREY (LIGHT GREY) LOW SHEEN	DULUX PH: 13 23 77	PROVIDE TEST PATCH FOR SIGN OFF BEFORE CONSTRUCTION	A	
2PACK PAINT	SHOPFRONT	P2	FALCON GREY (LIGHT GREY) 80% GLOSS	DULUX PH: 13 23 77	PROVIDE TEST PATCH FOR SIGN OFF BEFORE CONSTRUCTION	A	
PAINT	CEILING	P3	RAKU (DARK GREY) FLAT FINISH PG2 C7	DULUX PH: 13 23 77	PROVIDE TEST PATCH FOR SIGN OFF BEFORE CONSTRUCTION	A	
PAINT	WINDOW PLINTH & SCREEN	P4	RAKU (DARK GREY) 100% GLOSS PG2 C7	DULUX PH: 13 23 77	PROVIDE TEST PATCH FOR SIGN OFF BEFORE CONSTRUCTION	A	
PAINT	SHOPFRONT	P5	WARM WETLANDS (MUDY GREEN) LOW SHEEN P19 E8	DULUX PH: 13 23 77	PROVIDE TEST PATCH FOR SIGN OFF BEFORE CONSTRUCTION	A	
2PACK PAINT	SHOPFRONT	P6	WARM WETLANDS (MUDY GREEN) 100% GLOSS P19 E8	DULUX PH: 13 23 77	PROVIDE TEST PATCH FOR SIGN OFF BEFORE CONSTRUCTION	A	
2 PACK PAINT	SIGNAGE	P7	PICKLED 100% GLOSS P17F7	DULUX PH: 13 23 77	PROVIDE TEST PATCH FOR SIGN OFF BEFORE CONSTRUCTION	A	
PAINT	SHELVING UNITS	P8	PRICILLA (HOT PINK)	PORTERS PAINTS PH: 1800 656 664	PROVIDE TEST PATCH FOR SIGN OFF BEFORE CONSTRUCTION	A	

WARRINGAH COUNCIL  
THIS PLAN TO BE READ  
IN CONJUNCTION WITH  
Construction  
Certificate No. CC2010/0261



MATERIAL	LOCATION	CODE	PRODUCT	SUPPLIER	COMMENTS	REV	CLIENT SIGN-OFF
PAINT	SHELVING UNITS	P9	BIRTHDAY CANDLE (LIGHT PINK) LOW SHEEN	PORTERS PAINTS PH: 1800 656 664	PROVIDE TEST PATCH FOR SIGN OFF BEFORE CONSTRUCTION	A	
2 PACK PAINT	HANGING FEATURE	P11	HOT FLAMINGO (DARK PINK) 100% GLOSS P01 H7	DULUX PH: 13 23 77	PROVIDE TEST PATCH FOR SIGN OFF BEFORE CONSTRUCTION	A	
PAINT	WALLS	P12	LAVENDULA LOW SHEEN T52 6W	TAUBMANS	PROVIDE TEST PATCH FOR SIGN OFF BEFORE CONSTRUCTION	A	
2 PACK PAINT	COUNTER	P13	JAZZ (LIGHT PURPLE) 100% GLOSS P43 E5	DULUX PH: 13 23 77	PROVIDE TEST PATCH FOR SIGN OFF BEFORE CONSTRUCTION	A	
PAINT	STORE ROOM	P14	VIVID WHITE LOW SHEEN P17 F7	DULUX PH: 13 23 77	PROVIDE TEST PATCH FOR SIGN OFF BEFORE CONSTRUCTION	A	
PAINT	CHANGE ROOMS + JEWELLERY DISPLAY UNITS	P15	CHALK WHITE U.S.A LOW SHEEN PCWD7	DULUX PH: 13 23 77	PROVIDE TEST PATCH FOR SIGN OFF BEFORE CONSTRUCTION	A	
LAMINATE	LAMINATE SLAT WALL	L1	880 (MIRROR) LUCIDA	ABET LAMINATI PH: 02 9672 7300 CONTACT: IAN BANNISTER		A	
LAMINATE	COUNTER + PUK GONDOLA	L2	1324 SEI	ABET LAMINATI PH: 02 9672 7300 CONTACT: IAN BANNISTER		A	
LAMINATE	PUK GONDOLA	L3	421 (BLACK)	ABET LAMINATI PH: 02 9672 7300 CONTACT: IAN BANNISTER		A	
LAMINATE	JEWELLERY DISPLAY UNITS	L4	ULTRA WHITE PP3200 HG	CREA - HVG PH: 1300 558 882 CONTACT: JEFF LAMB		A	
LAMINATE	EXISTING CLOTHES DISPLAY UNIT	L5	385 - FUCHSIA NATURAL FINISH	LAMINEX PH: 02 8863 3700 CONTACT: RIO WARMAN		A	
LAMINATE	EXISTING CLOTHES DISPLAY UNIT	L6	425 - SEI CAMPIONE GRATUITO	ABET LAMINATI PH: 02 9672 7300 CONTACT: IAN BANNISTER		A	
MELAMINE		M1	WHITE	CONTRACTOR		A	
STAINLESS STEEL BRUSHED		SS	STAINLESS STEEL BRUSHED	CONTRACTOR		A	
GLASS	WINDOW PARTITION + JEWELRY DISPLAY UNITS	GL1	GLASS CLEAR	CONTRACTOR	TO COMPLY WITH 2006 BCA	A	

WARRINGAH COUNCIL  
 THIS PLAN TO BE READ  
 IN CONJUNCTION WITH  
 Construction  
 Certificate No. CC2010/0211



MATERIAL	LOCATION	CODE	PRODUCT	SUPPLIER	COMMENTS	REV	CLIENT SIGN-OFF
GLASS	SHOPFRONT	GL2	COLOURED BACK GLASS "FALCON GREY"	CONTRACTOR	TO COMPLY WITH 2006 BCA	A	
GLASS	SHOPFRONT	GL3	COLOURED BACK GLASS "WARM WETLANDS"	CONTRACTOR	TO COMPLY WITH 2006 BCA	A	
MIRROR	CHANGE ROOMS + JEWELLERY DISPLAY UNITS	MM	MIRROR			A	
ACRYLIC	JEWELLERY DISPLAY UNITS	AR1	ACRYLIC OPAL			A	
ACRYLIC	JOINERY	AR2	ACRYLIC CLEAR			A	
AKRIL	SHOPFRONT	AK1	ACRYLIC "FALCON GREY"	NOVER PH: 9677 3251 CONTACT: MARIO		A	
AKRIL	SHOPFRONT	AK2	ACRYLIC "WARM WETLANDS"	NOVER PH: 9677 3251 CONTACT: MARIO		A	
GRAPHIC	VARIOUS	GR	GRAPHIC		REFER TO GRAPHICS SCHEDULE	A	

**WARRINGAH COUNCIL**  
 THIS PLAN TO BE READ  
 IN CONJUNCTION WITH  
 Construction  
 Certificate No. CC2010/0211

## LIGHTING SCHEDULE-

IN100108 TREE OF LIFE

TENANCY 80 WARRINGAH MALL



INNOVA DESIGN  
LEVEL 7 630 GEORGE ST SYDNEY NSW AUSTRALIA 2000  
P. 02 9264 0899 F. 02 9283 0299  
Web: www.innova.com.au

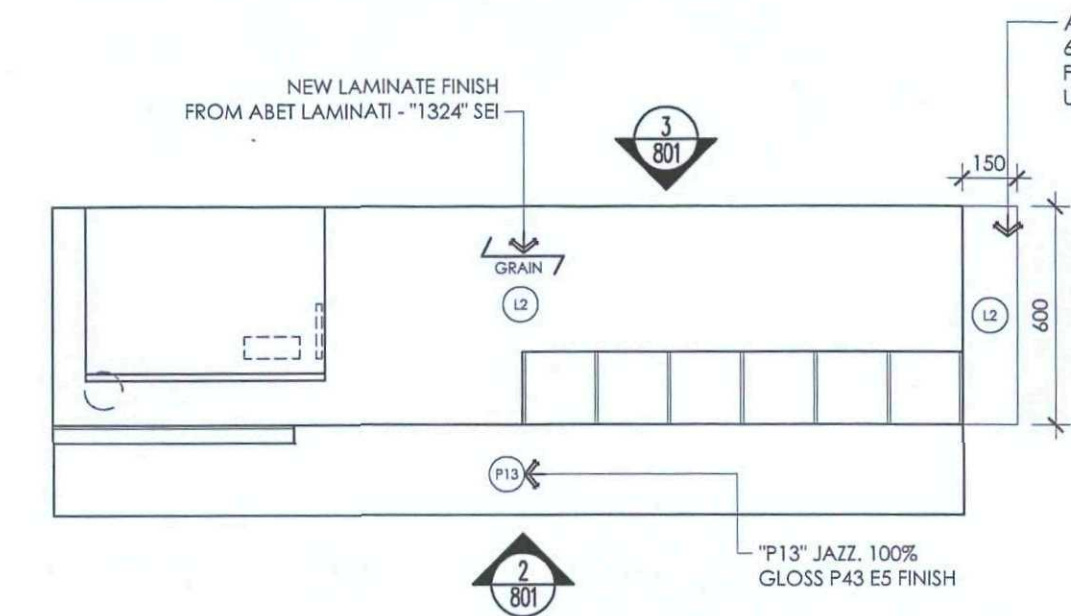
Revision:	Date:	Amendment:
A	02.03.10	ISSUED FOR FINAL LANDLORD APPROVAL

LIGHTING SCHEDULE LEGEND- ISSUE FOR INFORMATION TO BE READ IN CONJUNCTION WITH DWG 501

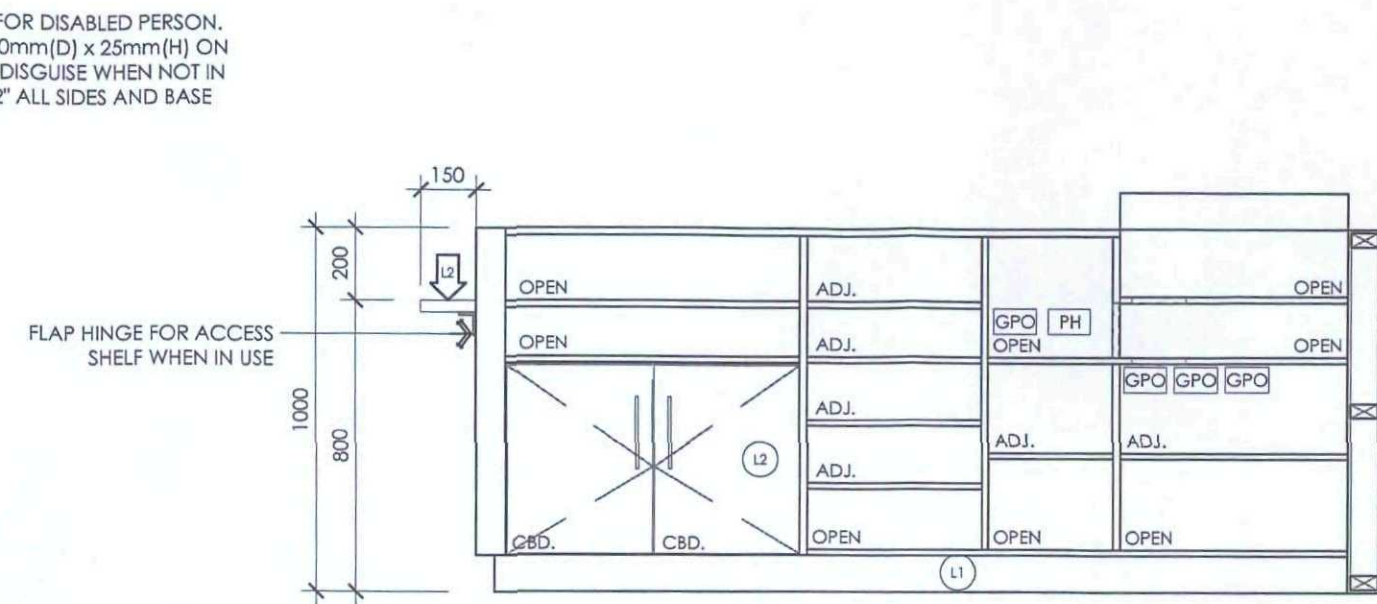
LF#	LOCATION	WATTS	LAMP	FITTING	DESCRIPTION	SUPPLIER	CONTACT DETAILS
LF1	N/A	N/A	N/A	N/A	N/A	N/A	N/A
LF2	N/A	N/A	N/A	N/A	N/A	N/A	N/A
LF3	N/A	N/A	N/A		N/A	N/A	N/A
LF4	GENERAL	70W	METAL HALIDE	MERIDIAN WALL WASHER	WIDE DISTRIBUTION TILT ACTION WALL WASHER	AMBIENCE LIGHTING SOURCED BY TREND LIGHTING	MATT ROBINSON 213-217 BOTANY RD WATERLOO NSW PH: 02 9319 4044
LF5	N/A	N/A	N/A	N/A	N/A	N/A	N/A
LF6	N/A	N/A	N/A	N/A	N/A	N/A	N/A



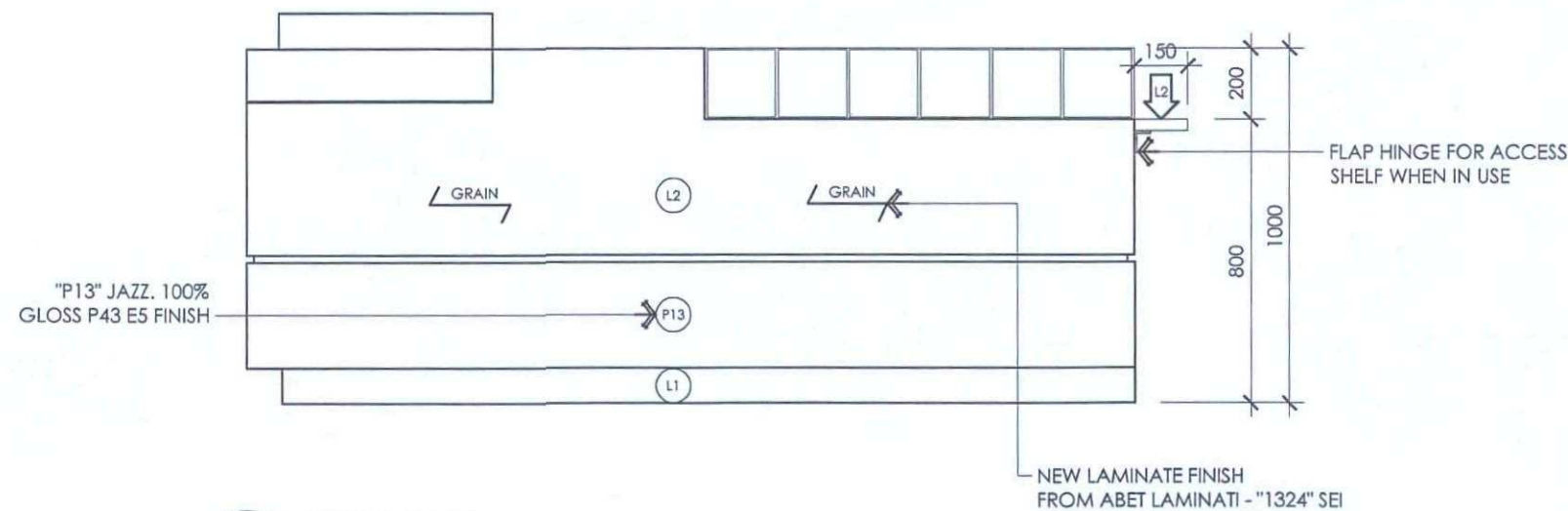




01 MAIN COUNTER  
PLAN VIEW  
SCALE: 1:20 @ A3



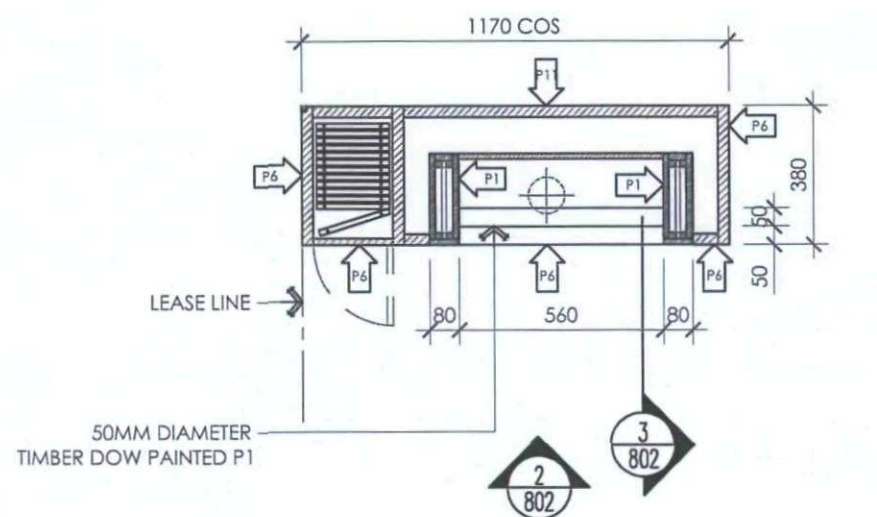
03 MAIN COUNTER  
BACK VIEW  
SCALE: 1:20 @ A3



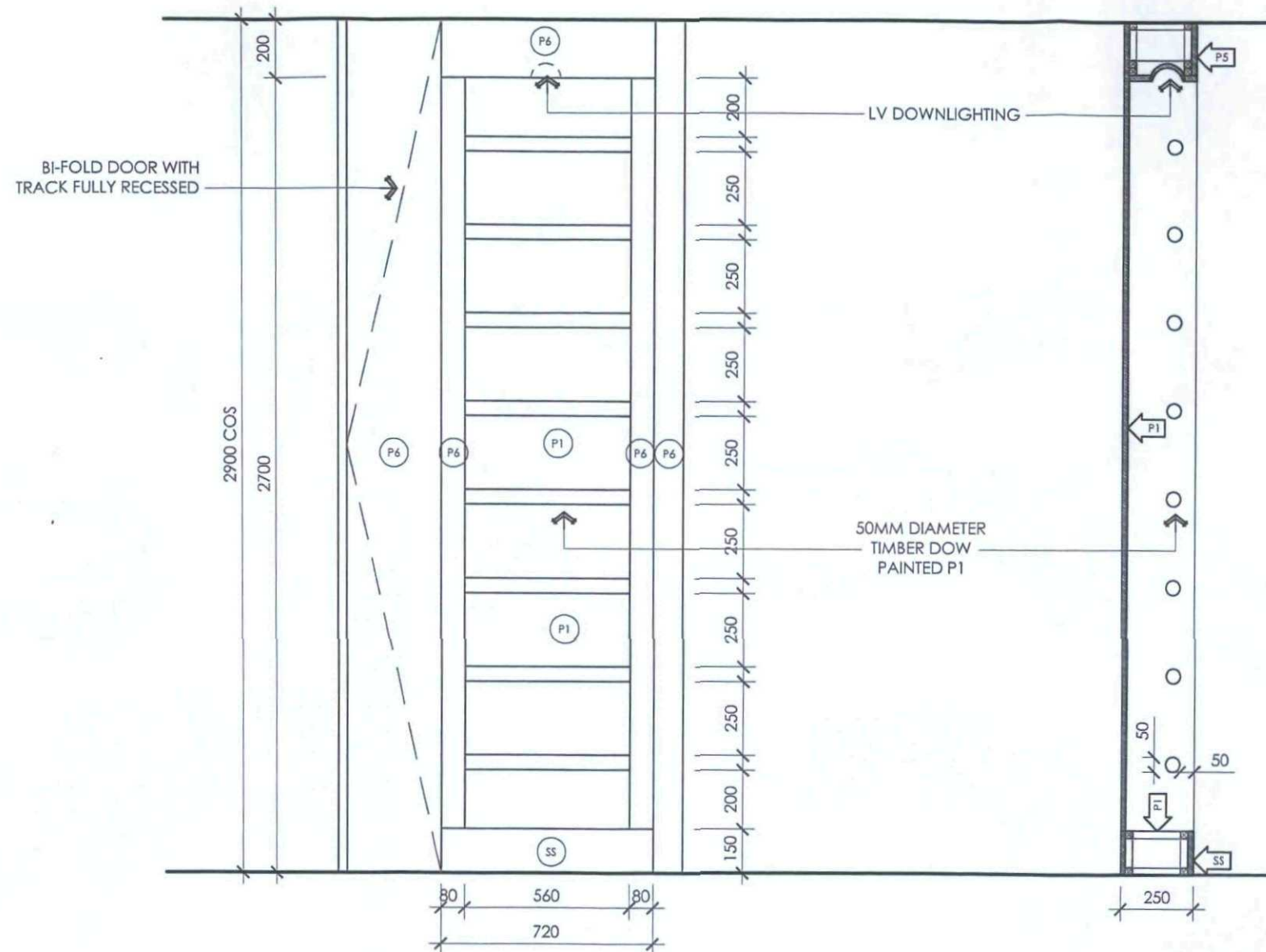
02 MAIN COUNTER  
FRONT VIEW  
SCALE: 1:20 @ A3

WARRINGAH COUNCIL  
THIS PLAN TO BE READ  
IN CONJUNCTION WITH  
Construction  
Certificate No. *ce 2010/0211*

--	--	--	--	--	--	--	--	--	--	--	--	--	--	--	--	--	--	--	--	--	--	--	--	--	--	--	--	--	--	--	--	--	--	--	--	--	--	--	--	--	--	--	--	--	--	--	--	--	--	--	--	--	--	--	--	--	--	--	--	--	--	--	--	--	--	--	--	--	--	--	--	--	--	--	--	--	--	--	--	--	--	--	--	--	--	--	--	--	--	--	--	--	--	--	--	--	--	--	--	--	--	--	--	--	--	--	--	--	--	--	--	--	--	--	--	--	--	--	--	--	--	--	--	--	--	--	--	--	--	--	--	--	--	--	--	--	--	--	--	--	--	--	--	--	--	--	--	--	--	--	--	--	--	--	--	--	--	--	--	--	--	--	--	--	--	--	--	--	--	--	--	--	--	--	--	--	--	--	--	--	--	--	--	--	--	--	--	--	--	--	--	--	--	--	--	--	--	--	--	--	--	--	--	--	--	--	--	--	--	--	--	--	--	--	--	--	--	--	--	--	--	--	--	--	--	--	--	--	--	--	--	--	--	--	--	--	--	--	--	--	--	--	--	--	--	--	--	--	--	--	--	--	--	--	--	--	--	--	--	--	--	--	--	--	--	--	--	--	--	--	--	--	--	--	--	--	--	--	--	--	--	--	--	--	--	--	--	--	--	--	--	--	--	--	--	--	--	--	--	--	--	--	--	--	--	--	--	--	--	--	--	--	--	--	--	--	--	--	--	--	--	--	--	--	--	--	--	--	--	--	--	--	--	--	--	--	--	--	--	--	--	--	--	--	--	--	--	--	--	--	--	--	--	--	--	--	--	--	--	--	--	--	--	--	--	--	--	--	--	--	--	--	--	--	--	--	--	--	--	--	--	--	--	--	--	--	--	--	--	--	--	--	--	--	--	--	--	--	--	--	--	--	--	--	--	--	--	--	--	--	--	--	--	--	--	--	--	--	--	--	--	--	--	--	--	--	--	--	--	--	--	--	--	--	--	--	--	--	--	--	--	--	--	--	--	--	--	--	--	--	--	--	--	--	--	--	--	--	--	--	--	--	--	--	--	--	--	--	--	--	--	--	--	--	--	--	--	--	--	--	--	--	--	--	--	--	--	--	--	--	--	--	--	--	--	--	--	--	--	--	--	--	--	--	--	--	--	--	--	--	--	--	--	--	--	--	--	--	--	--	--	--	--	--	--	--	--	--	--	--	--	--	--	--	--	--	--	--	--	--	--	--	--	--	--	--	--	--	--	--	--	--	--	--	--	--	--	--	--	--	--	--	--	--	--	--	--	--	--	--	--	--	--	--	--	--	--	--	--	--	--	--	--	--	--	--	--	--	--	--	--	--	--	--	--	--	--	--	--	--	--	--	--	--	--	--	--	--	--	--	--	--	--	--	--	--	--	--	--	--	--	--	--	--	--	--	--	--	--	--	--	--	--	--	--	--	--	--	--	--	--	--	--	--	--	--	--	--	--	--	--	--	--	--	--	--	--	--	--	--	--	--	--	--	--	--	--	--	--	--	--	--	--	--	--	--	--	--	--	--	--	--	--	--	--	--	--	--	--	--	--	--	--	--	--	--	--	--	--	--	--	--	--	--	--	--	--	--	--	--	--	--	--	--	--	--	--	--	--	--	--	--	--	--	--	--	--	--	--	--	--	--	--	--	--	--	--	--	--	--	--	--	--	--	--	--	--	--	--	--	--	--	--	--	--	--	--	--	--	--	--	--	--	--	--	--	--	--	--	--	--	--	--	--	--	--	--	--	--	--	--	--	--	--	--	--	--	--	--	--	--	--	--	--	--	--	--	--	--	--	--	--	--	--	--	--	--	--	--	--	--	--	--	--	--	--	--	--	--	--	--	--	--	--	--	--	--	--	--	--	--	--	--	--	--	--	--	--	--	--	--	--	--	--	--	--	--	--	--	--	--	--	--	--	--	--	--	--	--	--	--	--	--	--	--	--	--	--	--	--	--	--	--	--	--	--	--	--	--	--	--	--	--	--	--	--	--	--	--	--	--	--	--	--	--	--	--	--	--	--	--	--	--	--	--	--	--	--	--	--	--	--	--	--	--	--	--	--	--	--	--	--	--	--	--	--	--	--	--	--	--	--	--	--	--	--	--	--	--	--	--	--	--	--	--	--	--	--	--	--	--	--	--	--	--	--	--	--	--	--	--	--	--	--	--	--	--	--	--	--	--	--	--	--	--	--	--	--	--	--	--	--	--	--	--	--	--	--	--	--	--	--	--	--	--	--	--	--	--	--	--	--	--	--	--	--	--	--	--	--	--	--	--	--	--	--	--	--	--	--	--	--	--	--	--	--	--	--	--	--	--	--	--	--	--	--	--	--	--	--	--	--	--	--	--	--	--	--	--	--	--	--	--	--	--	--	--	--	--	--	--	--	--	--	--	--	--	--	--	--	--	--	--	--	--	--	--	--	--	--	--	--	--	--	--	--	--	--	--	--	--	--	--	--	--	--	--	--	--	--	--	--	--	--	--	--	--	--	--	--	--	--	--	--	--	--	--	--	--	--	--	--	--	--	--	--	--	--	--	--	--	--	--	--	--	--	--	--	--	--	--	--	--	--	--	--	--	--	--	--	--	--	--	--	--	--	--	--	--	--	--	--	--	--	--	--	--	--	--	--	--	--	--	--	--	--	--	--	--	--	--	--	--	--	--	--	--	--	--	--	--	--	--	--	--	--	--	--	--	--	--	--	--	--	--	--	--	--	--	--	--	--	--	--	--	--	--	--	--	--	--	--	--	--	--	--	--	--	--	--	--	--	--	--	--	--	--	--	--	--	--	--	--	--	--	--	--	--	--	--	--	--	--	--	--	--	--	--	--	--	--	--	--	--	--	--	--	--	--	--	--	--	--	--	--	--	--	--	--	--	--	--	--	--	--	--	--	--	--	--	--	--	--	--	--	--	--	--	--	--	--	--	--	--	--	--	--	--	--	--	--	--	--	--	--	--	--	--	--	--	--	--	--	--	--	--	--	--	--	--	--	--	--	--	--	--	--	--	--	--	--	--	--	--	--	--	--	--	--	--	--	--	--	--	--	--	--	--	--	--	--	--	--	--	--	--	--	--	--	--	--	--	--	--	--	--	--	--	--	--	--	--	--	--	--	--	--	--	--	--	--	--	--	--	--	--	--	--	--	--	--	--	--	--	--	--	--	--	--	--	--	--	--	--	--	--	--	--	--	--	--	--	--	--	--	--	--	--	--	--	--	--	--	--	--	--	--	--	--	--	--	--	--	--	--	--	--	--	--	--	--	--	--	--	--	--	--	--	--	--	--	--	--	--	--	--	--	--	--	--	--	--	--	--	--	--	--	--	--	--	--	--	--	--	--	--	--	--	--	--	--	--	--	--	--	--	--	--	--	--	--	--	--	--	--	--	--	--	--	--	--	--	--	--	--	--	--	--	--	--	--	--	--	--	--	--	--	--	--	--	--	--	--	--	--	--	--	--	--	--	--	--	--	--	--	--	--	--	--	--	--	--	--	--	--	--	--	--	--	--	--	--	--	--	--	--	--	--	--	--	--	--	--



01 SCARF DISPLAY UNIT "SH5"  
PLAN VIEW  
SCALE: 1:20 @ A3



02 SCARF DISPLAY UNIT "SH5"  
FRONT VIEW  
SCALE: 1:20 @ A3

03 SCARF DISPLAY UNIT "SH5"  
SECTION  
SCALE: 1:20 @ A3

**WARRINGAH COUNCIL**  
THIS PLAN TO BE READ  
IN CONJUNCTION WITH  
Construction  
Certificate No. CC2000/0211

Date	Issue	Drawn	Amendment
02.03.10	A	MC	FINAL DOCUMENTATION FOR LANDLORD APPROVAL



Contractor to verify all dimensions on site before commencing work.  
Innova Design is to be notified of any discrepancies in dimensions and setting  
out of work for resolution.  
Copyright of designs shown hereon is retained by this office.  
Authority is required for any reproduction.

Client: TREE-OF-LIFE  
FRANCIS-BORTHWICK

Project: TREE-OF-LIFE  
TENANCY-80  
WARRINGAH\_MALL

Title: SCARF\_DISPLAY\_UNIT

NORTH

Filename: I:\BRAUST\REC\PROJ\TREEOFLFWARRINGHAMALL\N100108\LOC\CL	Date: 02.03.10	Scale: 1:20@A3	Job No: N100108
Drawn By: MC	Reviewed By: MC	Approved By: MC	
Design By: MC	Issue: A	Drawing No: 802	
Shop/Filter: PB			