

10 BEVERLEY PLACE, CURL CURL STORMWATER CONCEPT DESIGN



LOCALITY PLAN
NOT TO SCALE
COPYRIGHT OF NEARMAP

DRAWING INDEX			
SHEET No.	DWG. No.	DRAWING TITLE	REV.
01	S01-SW100	COVER SHEET & DRAWING INDEX	A
02	S01-SW201	EROSION & SEDIMENT CONTROL PLAN & DETAILS	A
03	S01-SW301	STORMWATER CONCEPT DESIGN BASEMENT FLOOR PLAN	A
04	S01-SW302	STORMWATER CONCEPT DESIGN OVERALL SITE PLAN	A
05	S01-SW401	STORMWATER CONCEPT DESIGN DETAILS SHEET (1/2)	A
06	S01-SW402	STORMWATER CONCEPT DESIGN DETAILS SHEET (2/2)	A

PREPARED BY



S&G CONSULTANTS PTY LTD
SUITE 311, LEVEL 3
480 PACIFIC HIGHWAY
ST. LEONARDS, N.S.W. 2065
T: +61 2 8883 4239
Email: office@sgce.com.au
Web: www.sgce.com.au

ARCHITECT

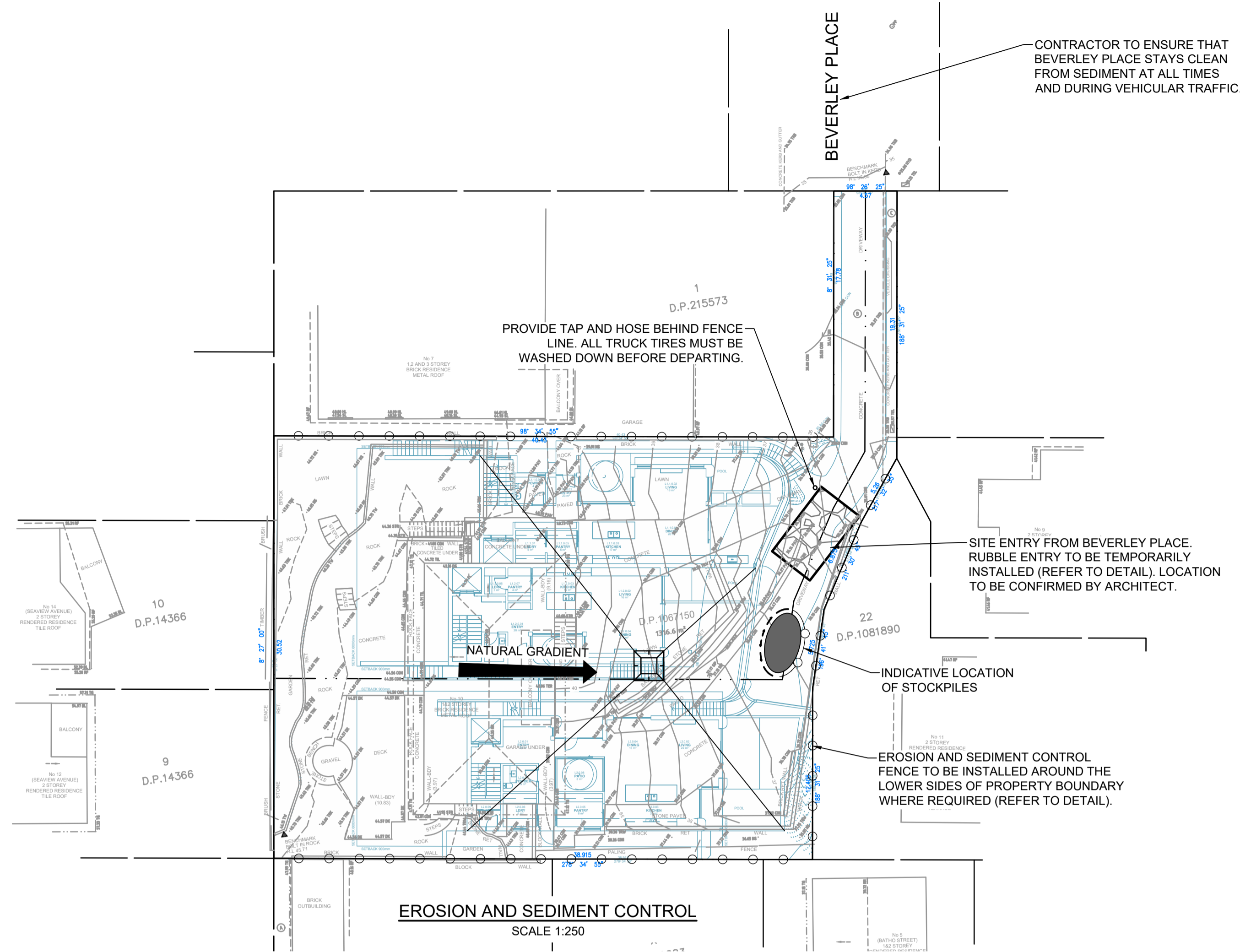
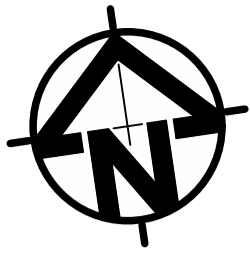
ARCANARY

CLIENT

REFINE LIVING

LGA





EROSION AND SEDIMENT CONTROL
SCALE 1:250

GENERAL NOTES

1. THIS PLAN IS A CONCEPT PLAN ONLY FOR STORMWATER DISPOSAL & EROSION CONTROL. IT IS NOT SUITABLE FOR CONSTRUCTION. THIS PLAN SHOULD BE ADAPTED BY THE BUILDER DURING DEMOLITION, EXCAVATION & CONSTRUCTION PHASES TO ENSURE ADEQUATE PERFORMANCE.
2. ALL DRAINAGE LAYOUT & DETAILS ARE DIAGRAMMATIC & INDICATIVE ONLY. ACTUAL LOCATION, SIZES, LEVELS & GRADES MAY ALTER WHEN DETAIL DESIGN WORKS ARE DOCUMENTED.

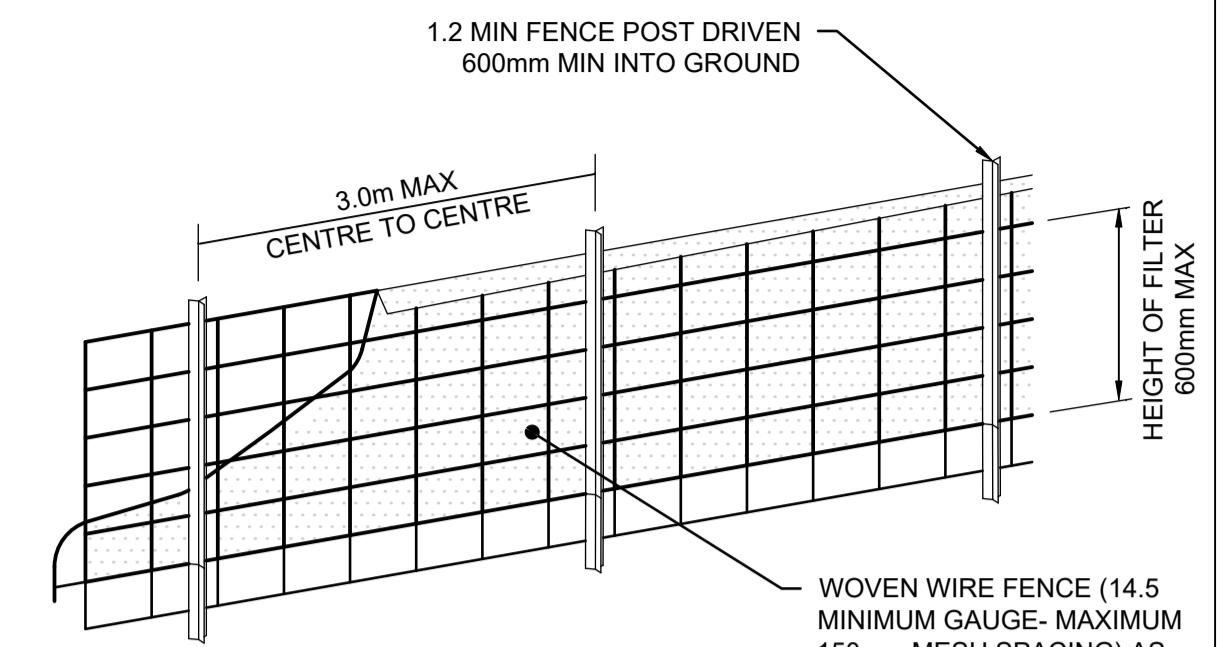
GEOTEXTILE INLET FILTER

GEOTEXTILE INLET FILTER IS PLACED IN EVERY PIT WITHIN THE SITE TO ENSURE THE RUNOFF WATER DURING CONSTRUCTION NOT ENTER THE PITS.

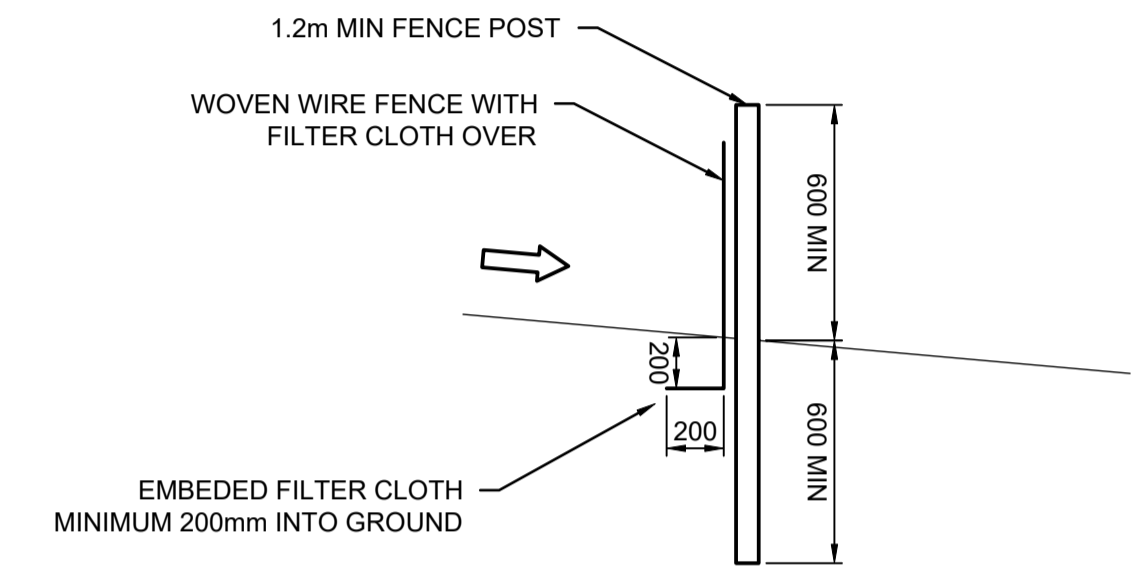
CLAY SOILS

A SYSTEM SHALL BE INSTALLED TO EITHER:

1. TRANSPORT STORMWATER RUNOFF WITH SUSPENDED SOLIDS FROM SITE VIA PUMP TRUCKS.
2. TREAT THE STORMWATER RUNOFF WITH SUSPENDED SOLIDS SO THE DISCHARGE WATER QUALITY TO COUNCIL STORMWATER DRAINAGE SYSTEM HAS A MAXIMUM CONCENTRATION OF SUSPENDED SOLIDS THAT DOES NOT EXCEED 50 MILLIGRAMS PER LITRE IN ACCORDANCE WITH THE PROTECTION OF THE ENVIRONMENT OPERATION ACT (POEO 1987) AND SHALL BE APPROVED BY LOCAL COUNCIL.



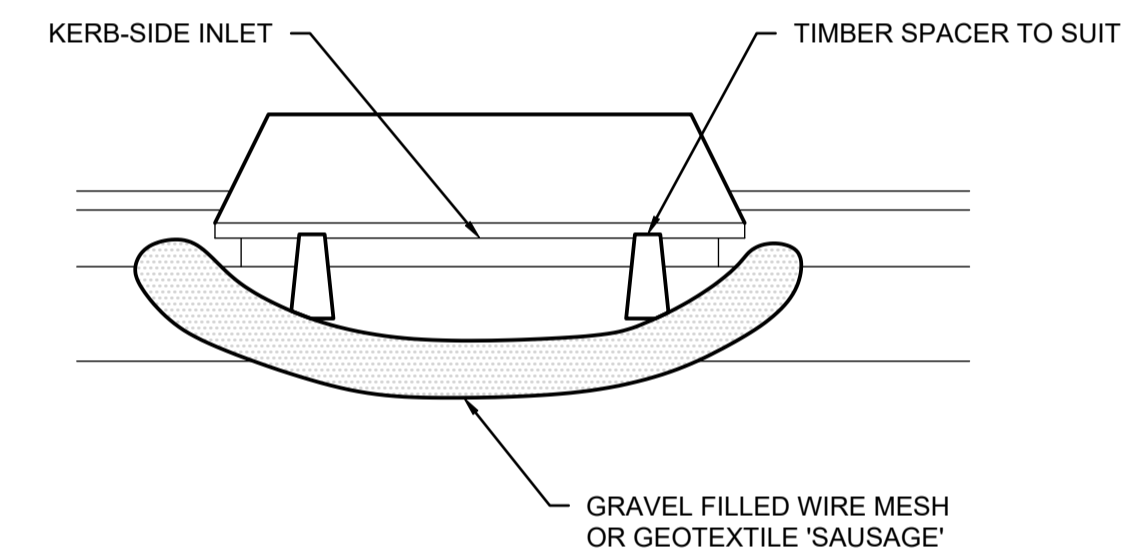
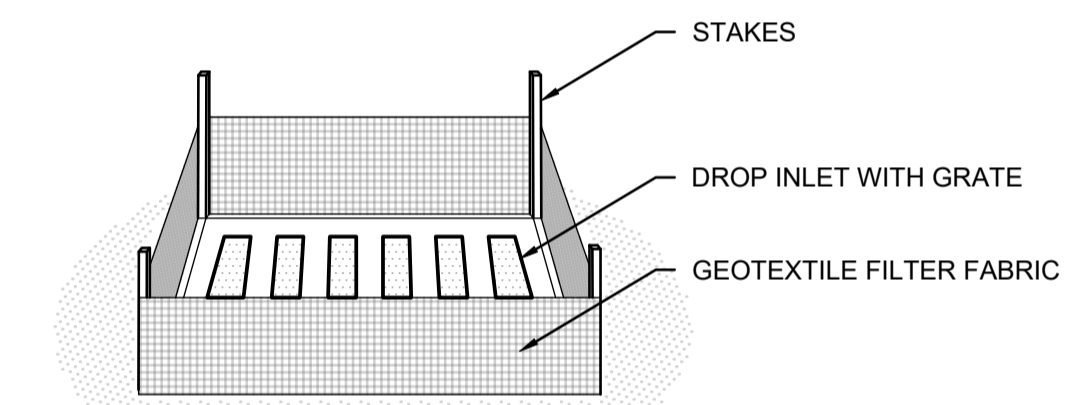
DIAGRAMMATIC VIEW



TYPICAL SECTION

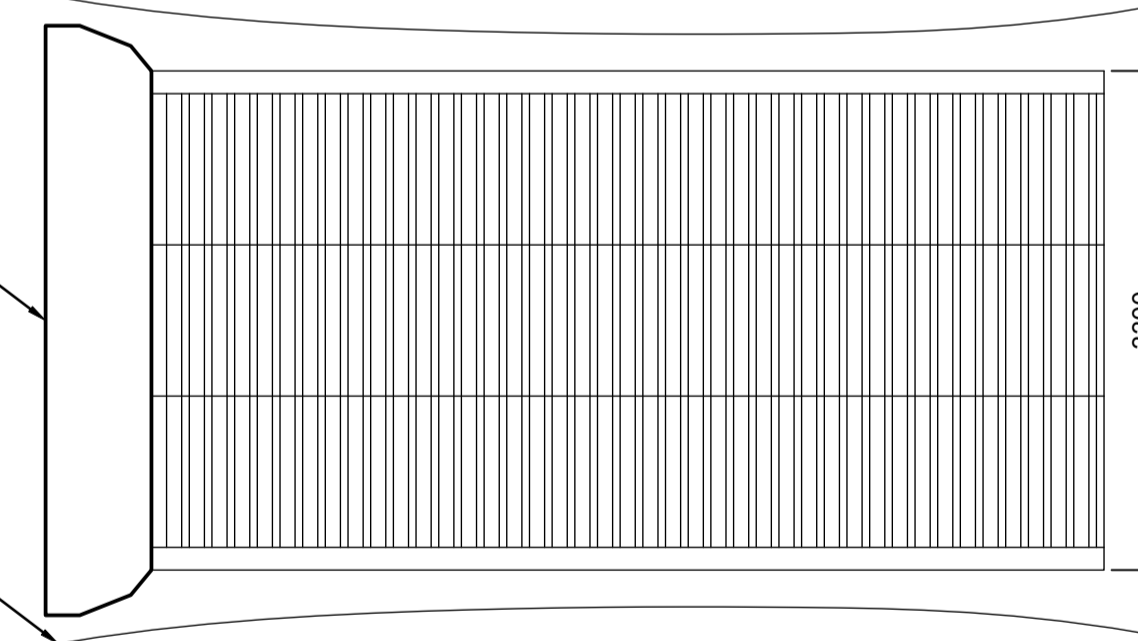
SEDIMENT FENCE

NOT TO SCALE



CATCH DRAIN TO BE PROVIDED ON BOTH SIDES OF 'SHAKE-DOWN' WHERE DIRECTED BY COUNCIL

RUN-OFF FROM GRIDS TO BE DIRECTED TO SEDIMENT TRAP



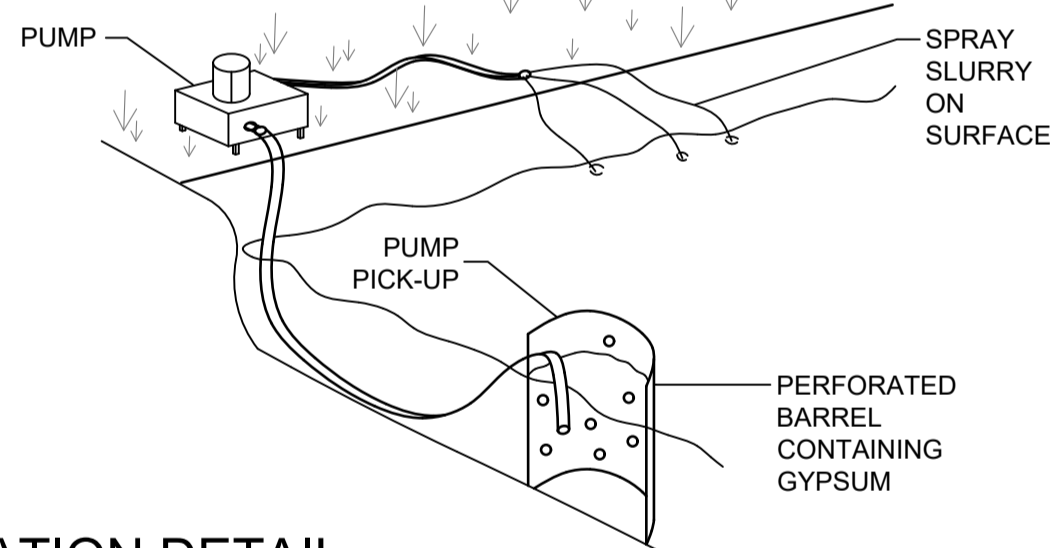
PLAN VIEW

TYPICAL SECTION

'CATTLE GRID' ALTERNATIVE

TEMPORARY CONSTRUCTION EXIT - NOT TO SCALE

- NOTE:**
1. FLOCCULATION TO BE USED IF WATER IS NOT CLEAR (ie. SEDIMENT GREATER THAN 50 mg/L) PRIOR TO DISCHARGING FROM TEMPORARY PUMP OUT
 2. FOR RATES & AGENTS SEE APPENDIX E OF NEW SOUTH WALES DEPARTMENT OF HOUSING 'MANAGING URBAN STORMWATER SOILS & CONSTRUCTION'.

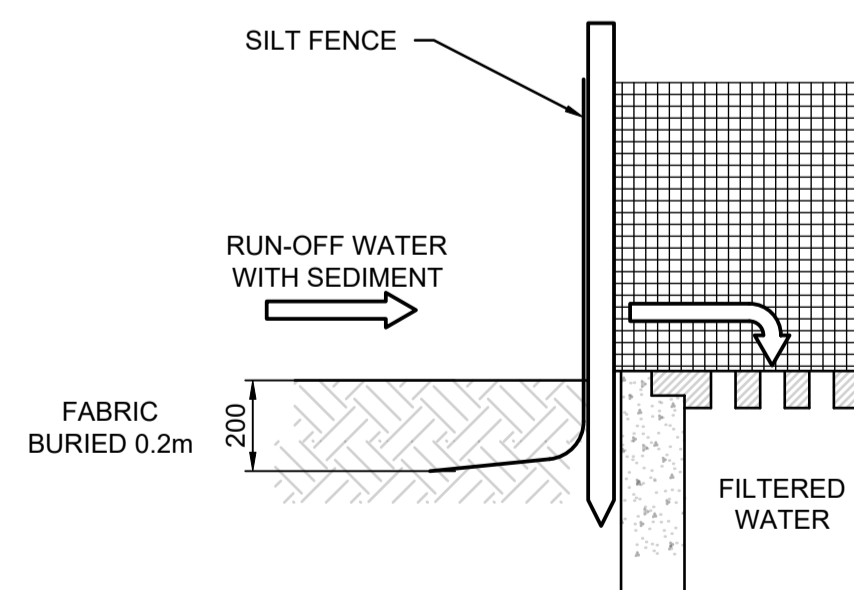


FLOCCULATION DETAIL

NOT TO SCALE

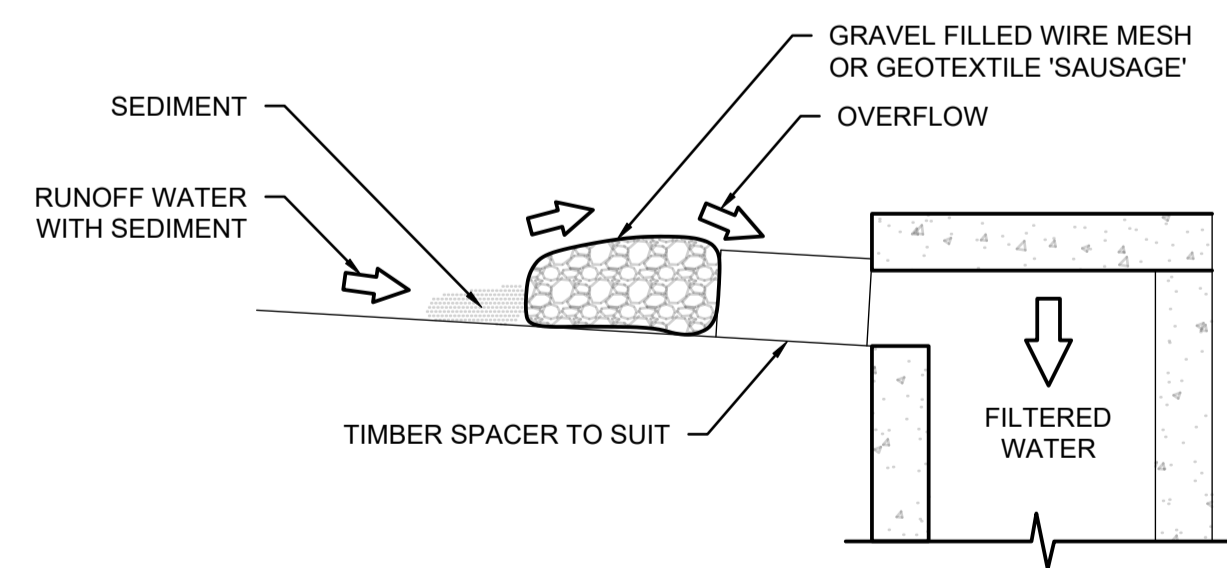
EROSION & SEDIMENTATION CONTROL NOTES

1. CONTRACTOR SHALL PROVIDE SEDIMENT FENCING MATERIAL DURING CONSTRUCTION TO THE LOW SIDE OF THE WORKS. THE SEDIMENT FENCING MATERIAL TO CYCLONE WIRE SECURITY FENCE. SEDIMENT CONTROL FABRIC SHALL BE AN APPROVED MATERIAL (EG. HUMES PROPEX SILT STOP) STANDING 300mm ABOVE GROUND & EXTENDING 150mm BELOW GROUND.
2. EXISTING DRAINS LOCATED WITHIN THE SITE SHALL ALSO BE ISOLATED BY SEDIMENT FENCING MATERIAL.
3. NO PARKING OR STOCKPILING OF MATERIALS IS PERMITTED ON THE LOWER SIDE OF THE SEDIMENT FENCE.
4. GRASS VERGES SHALL BE MAINTAINED AS MUCH AS PRACTICAL TO PROVIDE A BUFFER ZONE TO THE CONSTRUCTION SITE.
5. CONSTRUCTION ENTRY/EXIT SHALL BE VIA THE LOCATION NOTED ON THE DRAWING. CONTRACTOR SHALL ENSURE ALL DROPPABLE SOIL & SEDIMENT IS REMOVED PRIOR TO CONSTRUCTION TRAFFIC EXITING SITE. CONTRACTOR SHALL ENSURE ALL CONSTRUCTION TRAFFIC ENTERING & LEAVING THE SITE DO SO IN A FORWARD DIRECTION.



GEOTEXTILE INLET FILTER

NOT TO SCALE



GRAVEL INLET FILTER (SAUSAGE)

NOT TO SCALE

CONSTRUCTION NOTES

FABRICATE A SLEEVE MADE FROM GEOTEXTILE OR WIRE MESH LONGER THAN THE LENGTH OF THE INLET PIT

FILL THE SLEEVE WITH 25mm TO 50mm GRAVEL

FORM AN ELLIPTICAL CROSS-SECTION OF THE KERB INLET LEAVING A 100mm GAP AT THE TOP TO ACT AS AN EMERGENCY SPILLWAY

MAINTAIN THE OPENING WITH SPACER BLOCKS

FORM A SEAL WITH THE KERBING AND PREVENT SEDIMENT BYPASSING THE FILTER

FIT TO ALL KERB INLETS AT SAG POINTS

Discipline	Drawing Title and Number	Date	Rev.
ARCH			
STRUCT			
MECH			
ELEC			
HYD			
FIRE			
LANDS			
CIVIL			
SURVEY			

Discipline	Drawing Title and Number	Date	Rev.
ARCH			
STRUCT			
MECH			
ELEC			
HYD			
FIRE			
LANDS			
CIVIL			
SURVEY			

Discipline	Drawing Title and Number	Date	Rev.
ARCH			
STRUCT			
MECH			
ELEC			
HYD			
FIRE			
LANDS			
CIVIL			
SURVEY			

Discipline	Drawing Title and Number	Date	Rev.
ARCH			
STRUCT			
MECH			
ELEC			
HYD			
FIRE			
LANDS			
CIVIL			
SURVEY			

Discipline	Drawing Title and Number	Date	Rev.
ARCH			
STRUCT			
MECH			
ELEC			
HYD			
FIRE			
LANDS			
CIVIL			
SURVEY			

Discipline	Drawing Title and Number	Date	Rev.
ARCH			
STRUCT			
MECH			
ELEC			
HYD			
FIRE			
LANDS			
CIVIL			
SURVEY			

Discipline	Drawing Title and Number	Date	Rev.
ARCH			
STRUCT			
MECH			
ELEC			
HYD			
FIRE			
LANDS			
CIVIL			
SURVEY			

ENGINEERS AUSTRALIA
Chartered Professional Engineer
MEMBER

WARNING: THE DESIGNS, DRAWINGS, SPECIFICATIONS AND THE COPYRIGHT HEREIN REMAIN THE SOLE INTELLECTUAL PROPERTY OF S&G CONSULTANTS PTY LTD AND MUST NOT BE USED, COPIED, ALTERED OR REPRODUCED WHOLLY OR IN PART IN ANY FORM WITHOUT THE WRITTEN CONSENT OF S&G CONSULTANTS PTY LTD

DIMENSIONS NOT SHOWN TO BE CHECKED ON SITE. DO NOT SCALE OF THIS DRAWING. POSITIONS OF AUTHORITIES MAINS AND/OR EXISTING SERVICES ARE TO BE CHECKED PRIOR TO COMMENCEMENT OF WORK. REPORT ANY DISCREPANCIES TO THE CONSULTING ENGINEER FOR DECISION/CLARIFICATION BEFORE PROCEEDING WITH THE WORK. THIS DRAWING IS TO BE READ IN CONJUNCTION WITH THE SPECIFICATIONS AND OTHER CONSULTANTS' DRAWINGS.

Scales
0m 2.5 5 7.5 10 12.5
SCALE 1:250 ON ORIGINAL SIZE

Client
REFINE LIVING

Architect
ARCANARY

SGC
S&G CONSULTANTS PTY LTD
SUITE 311, LEVEL 3
480 PACIFIC HIGHWAY
ST. LEONARDS, N.S.W. 2065
T: +61 2 8883 4239
Email: office@sgce.com.au
Web: www.sgce.com.au
A.B.N. 21 118 222 530

Discipline	Drawing Title and Number	Date	Rev.
ARCH			
STRUCT			
MECH			
ELEC			
HYD			
FIRE			
LANDS			
CIVIL			
SURVEY			

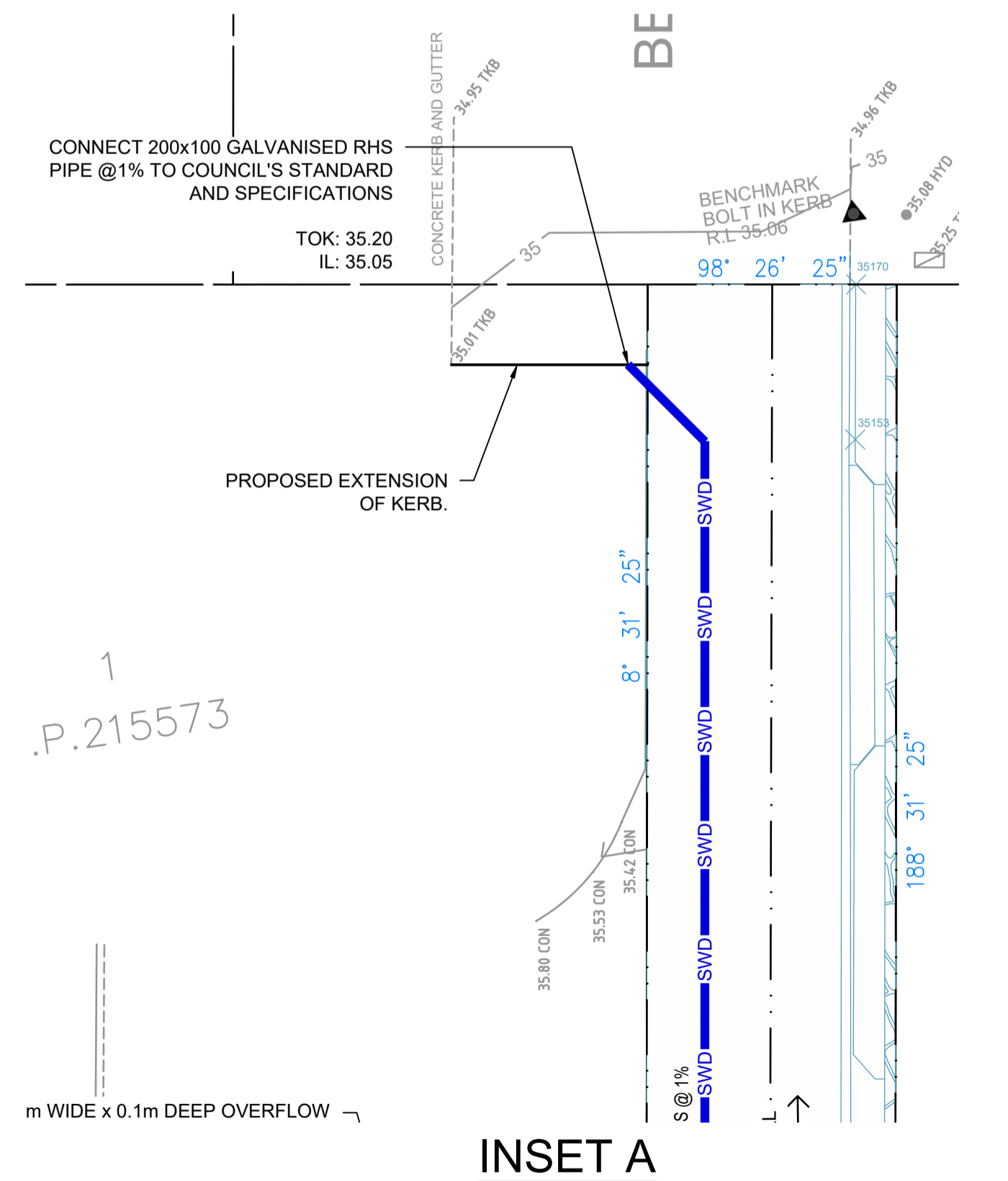
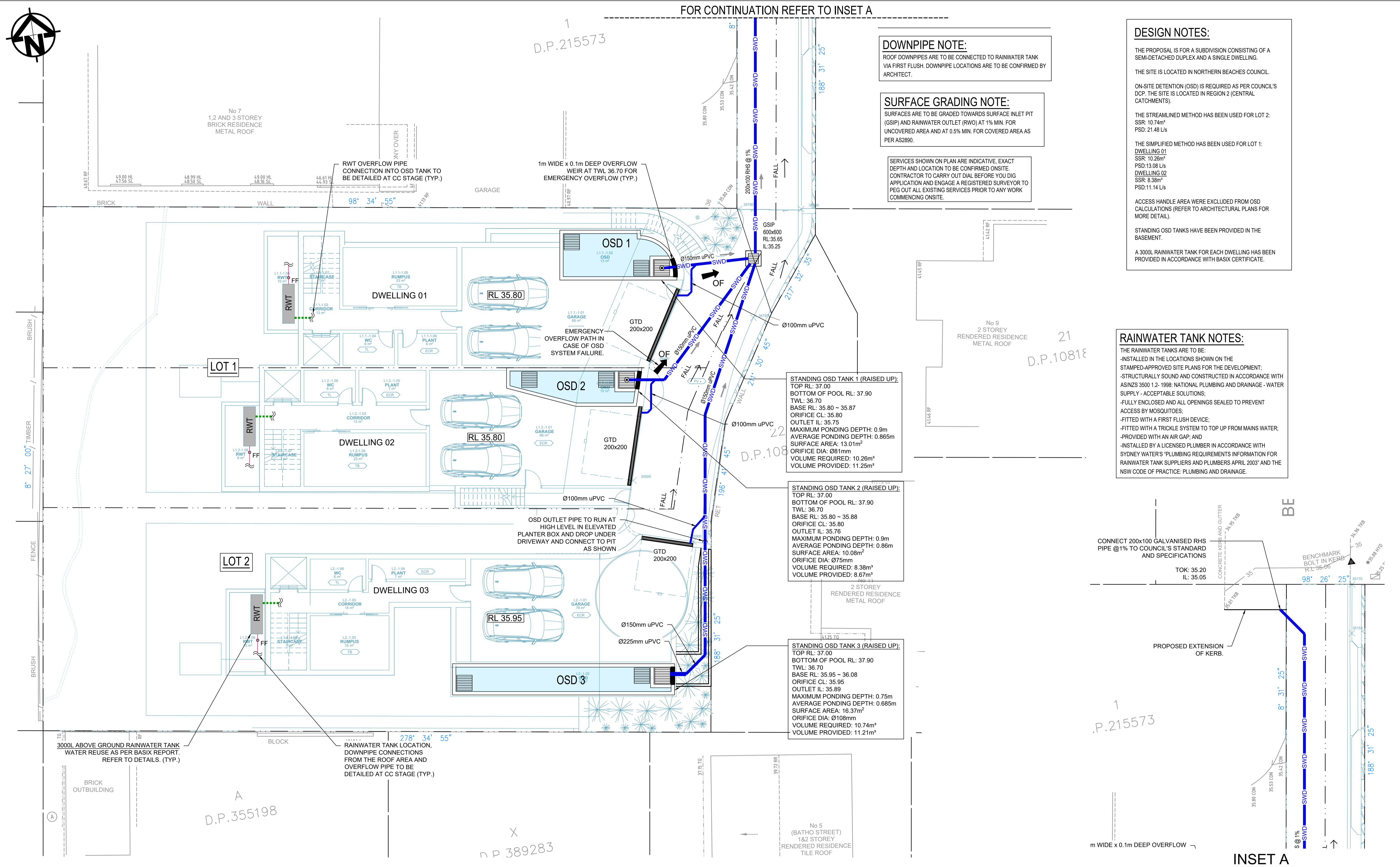
Discipline	Drawing Title and Number	Date	Rev.
ARCH			
STRUCT			
MECH			
ELEC			
HYD			
FIRE			
LANDS			
CIVIL			
SURVEY			

Status **ISSUED FOR APPROVAL**
NOT FOR CONSTRUCTION

Drawing Title
EROSION & SEDIMENT CONTROL PLAN & DETAILS

Project No.	Set No.	Drg No.	Revision No.
20250031	S01-SW201	A	

Grid	Datum	Sheet
	A.H.D.	02



Reference Coordination Drawing				Quality Control		Scales		Client		Architect		PROJECT		Status	
Discipline	Drawing Title and Number	Date	Rev.	DRAWN	DATE	0m 1 2 3 4 5 SCALE 1:100 ON ORIGINAL SIZE		REFINE LIVING		ARCANARY		10 BEVERLEY PLACE, CURL CURL STORMWATER CONCEPT DESIGN		ISSUED FOR APPROVAL NOT FOR CONSTRUCTION	
ARCH				CHECKED	06.03.25							STORMWATER CONCEPT DESIGN		Project No. Set No. - Drg No. Revision No.	
MECH				SH	06.03.25							20250031 S01-SW301 A			
ELEC				DESIGNED	DATE										
HYD				CS	06.03.25										
FIRE				VERIFIED	DATE										
LANDS				SH	06.03.25										
CIVIL				APPROVED	DATE										
SURVEY				SH	06.03.25										
Issuer internal sequence and revision history				1-preliminary		2-development application		3-construction certificate		4-tender		5-construction		6-other	
S&G CONSULTANTS PTY LTD SUITE 311, LEVEL 3 480 PACIFIC HIGHWAY ST. LEONARDS, N.S.W. 2065 T: +61 2 8883 4239 Email: office@sgce.com.au Web: www.sgce.com.au A.B.N. 21 118 222 530				ENGINEERS AUSTRALIA Chartered Professional Engineer MEMBER		WARNING: THE DESIGNS, DRAWINGS, SPECIFICATIONS AND THE COPYRIGHT HEREIN REMAIN THE SOLE INTELLECTUAL PROPERTY OF S&G CONSULTANTS PTY LTD AND MUST NOT BE USED, COPIED, ALTERED OR REPRODUCED WHOLLY OR IN PART IN ANY FORM WITHOUT THE WRITTEN CONSENT OF S&G CONSULTANTS PTY LTD		DIMENSIONS NOT SHOWN TO BE CHECKED ON SITE. DO NOT SCALE OF THIS DRAWING. POSITIONS OF AUTHORITIES MAINS AND/OR EXISTING SERVICES ARE TO BE CHECKED PRIOR TO COMMENCEMENT OF WORK. REPORT ANY DISCREPANCIES TO THE CONSULTING ENGINEER FOR DECISION/CLARIFICATION BEFORE PROCEEDING WITH THE WORK. THIS DRAWING IS TO BE READ IN CONJUNCTION WITH THE SPECIFICATIONS AND OTHER CONSULTANTS' DRAWINGS.							

