


<div><div>SOWDES</div><div>P.O Box 619 Goulburn, NSW, 2580 E: sowdes@sowdes.com M: 0428 863 401</div></div>	DRAWING REFERENCE			PROJECT TITLE: BIOFILTRATION SYSTEM (RAINGARDENS)	EXAMPLES ONLY - TO BE USED FOR REFERENCE PURPOSES ONLY - SUBJECT TO VARIATION, CHANGES AND REVIEW BY THE DESIGNER WITHOUT NOTICE	DRAWING ISSUE DATE:	SHEET NUMBER: 1 of 1
	AMENDMENT No.	AMENDMENT DETAILS:	DATE:			REFERENCE NUMBER: RGSPECS	DRAWN BY: PJ
	A	SITE SPECIFIC DETAILS ADDED	Oct. 2019			DRAWING SCALE: NTS	AT SHEET SIZE: A3
				DRAWING TITLE: CONCEPTUAL DESIGNS OPTIONS		DRAWING REFERENCE NUMBER:	

Site pre-works and establishment;

- Establish a stabilised site access at the entrance to the site in accordance with Standard Drawing SD6-14.
- Determine and define work areas for the construction and installation of the various stormwater quality improvement devices (SQID's) and create a clear separation from the main traffic streams
- Determine the location for any excavated spoil stockpile areas within the site and line the lower side of each stockpile with barrier fencing in accordance with Standard Drawing SD6-8.
- Determine a site for the placement of general rubbish, building materials, and the delivery of materials to the site – in particular the supply of the soils and earth based filter media materials and line the lower side of each site with barrier fencing in accordance with Standard Drawing SD6-8.
- As much as possible and practical limit the amount of delivered soil-based materials to quantities that can be installed at one time to avoid the need for stockpiling
- Prior to the commencement of any works erect sediment control fencing in accordance with Standard Drawing SD6-8 around the lower northwestern and southwestern boundaries of the site and along the northern and eastern aspect of the entrance roadways adjacent to the stands of Duffys Forest EEC and maintain until all earthworks and roadworks are complete
- Erect signs and barriers around the edges of the Duffys Forest EEC to be preserved to prohibit all persons, vehicles and machinery from entering

Construction phase;

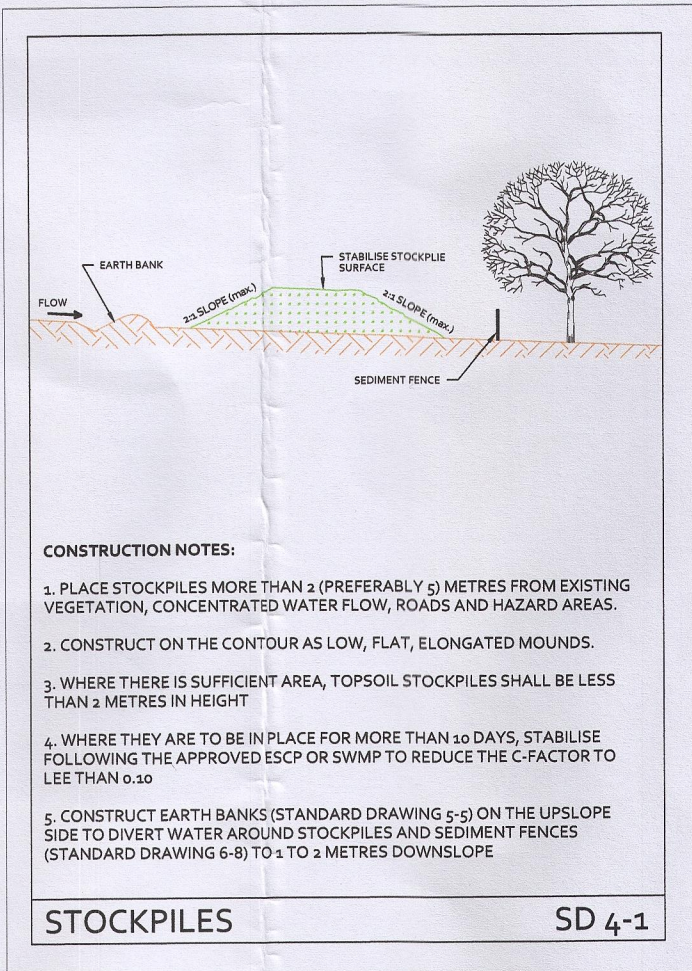
- Maintain a stabilised site access in accordance with Standard Drawing SD6-14 until all internal driveway areas are completed to their design specifications.
- Install all underground stormwater and sewer drainage services to the relevant grades and all other utilities within the property and turn-up pipes and finish pits to their design levels. Do not install the proposed biofiltration devices at this stage. Protect all pipes and pits in accordance with Standard Drawing SD6-12
- Construct the stabilised outlet / energy dissipator along the northwestern boundary of the site and connect all stormwater drainage pipes to the discharge point as per the design
- In particular, all proposed stormwater and sewer drainage located behind any building or fixed structure will need to be installed prior to the construction of such obstacles to enable easy access with machinery.
- Form the internal driveway, paths and other external hardstand areas to the design levels and shape and ensure that there is adequate grade / fall to direct runoff into the respective biofiltration raingarden devices
- Once the internal driveway, paths and other hardstand areas are complete then the proposed biofiltration devices can be constructed from base up with the drainage layer, filter media, and rock mulch over the surface - Do not install the plant material at this stage. Ensure that between each layer a sheet of geotextile is installed to prevent the migration of fine materials between layers and to retain the integrity of the system
- Whilst works is still continuing on the property protect all biofiltration devices from possible physical damage by installing bollards, barriers, or other similar measures – particularly those along the edges of any vehicle traffic areas
- As soon as practical after the roof area of each structure has been installed connect the gutters and downpipes to the designated rainwater tanks to avoid causing nuisance around the work site, and ensure that the overflow pipes from the water tanks are connected to the stormwater drainage system that discharges along the northwestern boundary of the site
- In conjunction with the general landscaping of the site install the specified plant material at the nominated density to the individual biofiltration raingarden devices
- Initiate an irrigation program to ensure the survivability of the plants within each of the biofiltration devices and the general landscaping areas until they have established and are receiving regular rainwater inflows. Be careful of the timing of sowing the plant material to avoid trying to establishment them during periods of excessive heat

Post construction undertakings;

- Remove all temporary barrier fencing and sediment control measures
- Monitor the survivability of the plants within the biofiltration systems (and general landscaping areas) and replace as necessary until at least 80% effective cover has been established

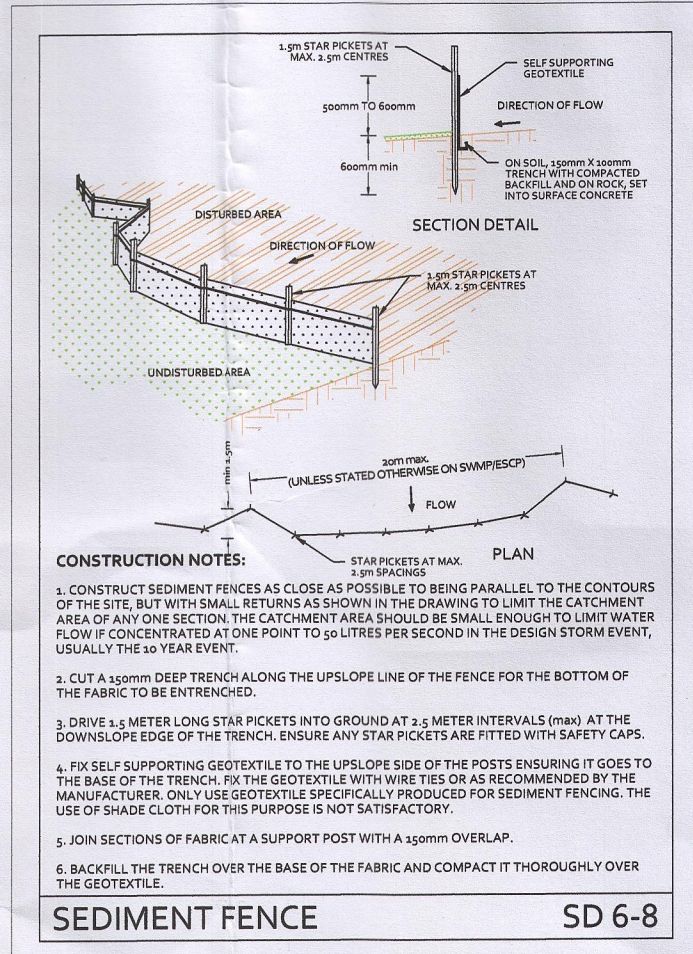
General comments;

- Check the condition of all sediment control fencing at least weekly and after rain events and rectify as necessary
- All sediment control fence and barriers to be in accordance with Landcom Standard Drawing SD6-8
- All pipe upturns and drainage pits to be protected from sediment laden stormwater ingress in accordance with Landcom Standard Drawing SD6-12
- All topsoil stockpiles to be in accordance with Landcom Standard Drawing SD4-1
- All stabilised site access to be installed in accordance with Landcom Standard Drawing SD6-14



ESTABLISH A SEDIMENT CONTROL BARRIER IN ACCORDANCE WITH STANDARD DRAWING SD6-8 AND MAINTAIN UNTIL ALL EARTHWORKS ARE COMPLETE

ESTABLISH A SEDIMENT CONTROL BARRIER IN ACCORDANCE WITH STANDARD DRAWING SD6-8 AND MAINTAIN UNTIL ALL EARTHWORKS ARE COMPLETE



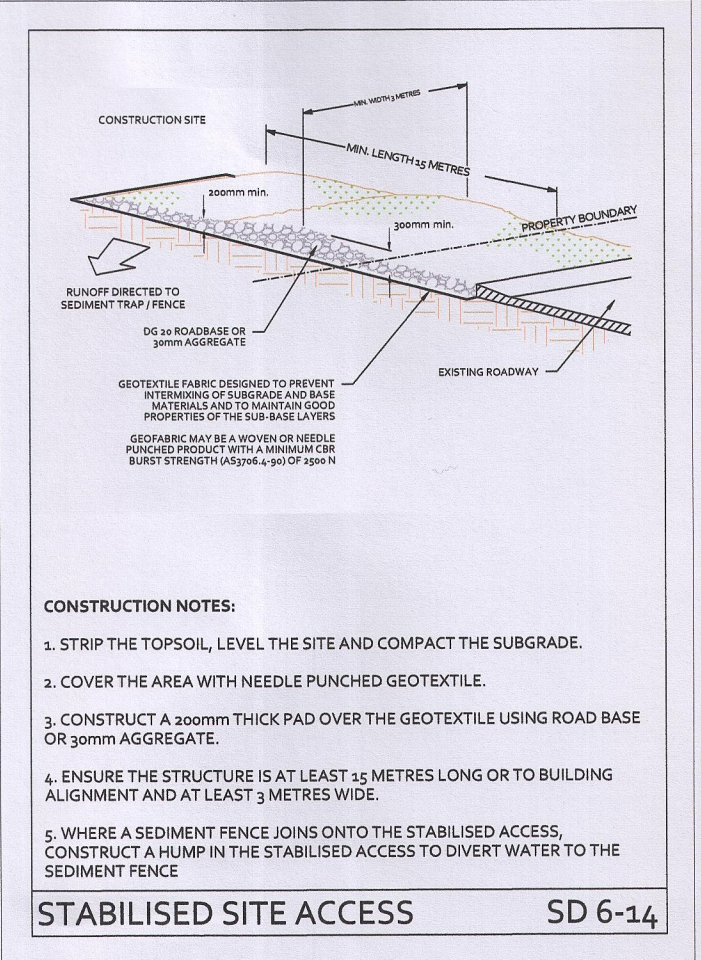
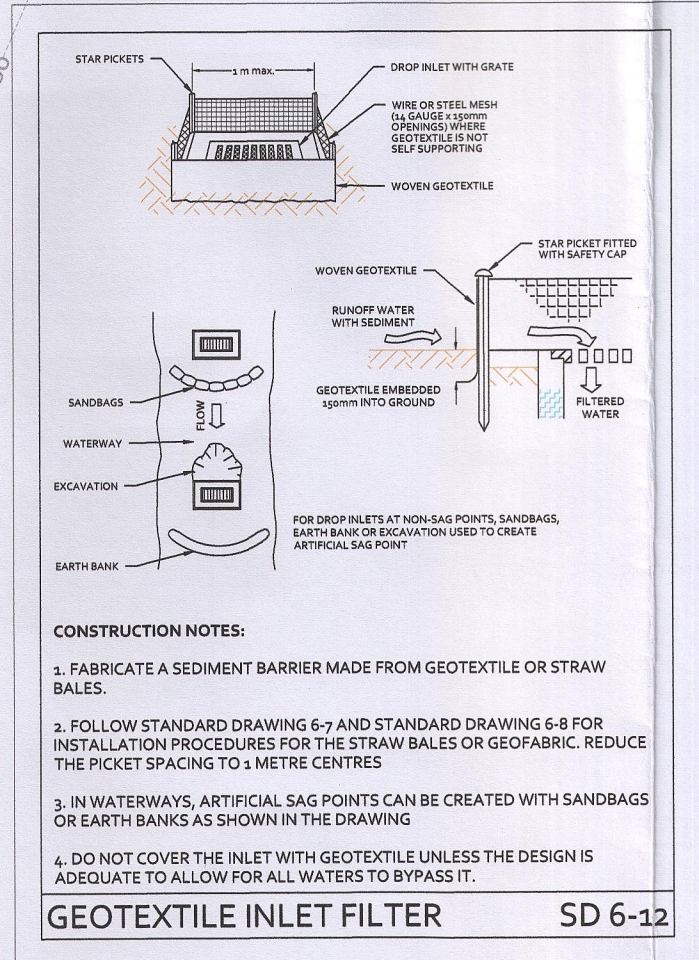
ESTABLISH A SEDIMENT CONTROL BARRIER IN ACCORDANCE WITH STANDARD DRAWING SD6-8 AND MAINTAIN UNTIL ALL EARTHWORKS ARE COMPLETE

STABILISED OUTLET 10 x 1.5 METRES REFER TO INSET DRAWING 'DETAIL A' FOR CONSTRUCTION REQUIREMENTS. LINE THE BASE OF THE OUTLET WITH GEOFABRIC MATERIAL

ESTABLISH A SEDIMENT CONTROL BARRIER IN ACCORDANCE WITH STANDARD DRAWING SD6-8 AND MAINTAIN UNTIL ALL EARTHWORKS ARE COMPLETE. ERECT SIGNAGE AND BARRIERS TO PROHIBIT ACCESS TO THE DUFFYS FOREST EEC.

ESTABLISH A SEDIMENT CONTROL BARRIER IN ACCORDANCE WITH STANDARD DRAWING SD6-8 AND MAINTAIN UNTIL ALL EARTHWORKS ARE COMPLETE. ERECT SIGNAGE AND BARRIERS TO PROHIBIT ACCESS TO THE DUFFYS FOREST EEC.

FORM A STABILISED ACCESS IN ACCORDANCE WITH STANDARD DRAWING SD6-14 AND MAINTAIN UNTIL ALL EARTHWORKS AND DRIVEWAYS ARE COMPLETE.



PROJECT TITLE:
RESIDENTIAL DWELLING DEVELOPMENT

DRAWING TITLE:
CONCEPTUAL EROSION & SEDIMENT CONTROL PLAN

TITLE PARTICULARS:
LOT 79 DP752017

STREET ADDRESS:
79 KUMARNA STREET
DUFFYS FOREST, NSW. 2084

DRAWING DATE:
Oct. 2019
SHEET NUMBER:
1 of 1
REFERENCE NUMBER:
0030616
DRAWN BY:
PJ
DRAWING SCALE:
1:400 / 1:2,500
AT SHEET SIZE:
A1
DRAWING REFERENCE NUMBER:
0060316-01ESC

AMENDMENT No. / DATE
A
25/10/2019
DRAWING REFERENCE
DEVELOPMENT APPLICATION
ISSUE



P.O. Box 616
Gaulburn, NSW, 2510
E: sowedes@sowedes.com
M: 0428 865 404

This drawing and the ideas contained herein are protected by copyright. Unauthorised distribution, reproduction or use as part of a submission for development purposes is a breach of copyright. No licence is implied, expressed or assigned unless acknowledged separately in writing. Any rights to distribute or use the information contained in the drawing will be terminated by SOWDES if the client breaches their obligation to pay all invoices owing to SOWDES. The drawings are conceptual and are not intended to be absolute and therefore may be slightly varied in reality.

The accompaning erosion and sediment control measures are recommended for the site during the site establishment and operational phases of the development and are to read in conjunction with the 'Blue Book' (Landcom 2004), the Stormwater Management Site Plan – Ref: 0030616-01SW

THE PROPERTY BOUNDARIES, DIMENSIONS AND CONTOURS USED IN THE PREPARATION OF THIS PLAN HAVE BEEN REPRODUCED FROM THE SURVEY PLAN PREPARED BY SURVEYPLUS - REF: 16671

0 10 20 30
METRES