



30 August 2019

Adriano Pupilli Architects  
PO Box 770, Manly NSW 2095  
Level 1, 13 The Corso, Manly  
+61291146300  
[adrianopupilli.com.au](http://adrianopupilli.com.au)

## **Bushfire Assessment to inform Development Application for proposed renewal works to Long Reef Surf Life Saving Club**

Dear Sir/Madam

GHD has been engaged by Adriano Pupilli Architects to provide a bushfire assessment in relation to a DA for proposed renewal works to Long Reef Surf Life Saving Club. The requirement for a bushfire assessment is triggered because part of the Lot on which the Long Reef Surf Life Saving Club is situated is affected by a bushfire-prone buffer zone extending from bushfire-prone vegetation on adjacent land.

### **Details of the proposal**

DA Proponent: Northern Beaches Council (as Crown Land Manager)

Property Address: Long Reef Surf Life Saving Club, Pittwater Road, Collaroy, NSW.

Lot and DP Number: Lot 11, DP1193189

Description of Works: Demolition of existing Long Reef SLSC building, amenities building, pebblecrete hardstand, stormwater pit and sewer pump out station.

Construction of three buildings located around a landscaped courtyard. The three buildings comprise a two storey SLSC building; a single-storey public amenities building and a single-storey café building with storage lockers.

### **Bushfire Assessment**

The Long Reef SLSC site is located behind dunes at the rear of Long Reef Beach, east of Pittwater Road, south of Long Reef Golf Club.

Due to the presence of bushfire-prone vegetation fringing the north and western edges of Dee Why Lagoon, a bushfire-prone buffer zone extends onto the far western part of Lot 11, DP1193189, between the Long Reef SLSC car park and Pittwater Road.

The bushfire buffer zone extends into the existing Long Reef SLSC car park, however it does not extend as far as the existing Long Reef SLSC building and amenities building.

Figure 1 shows the location of the Long Reef SLSC site relative to bushfire-prone land (red) and bushfire buffer zone (yellow). Figure 2 shows a zoomed-in view of the extent of the bushfire buffer zone, confirming that existing Long Reef SLSC buildings are not within, or partially within the mapped bushfire

buffer zone. Figure 3 depicts the proposed site plan for building works, relative to the bushfire buffer zone.



Figure 1 Location of Long Reef SLSC on bushfire prone land map



Figure 2 Location of existing Long Reef SLSC buildings outside bushfire buffer zone

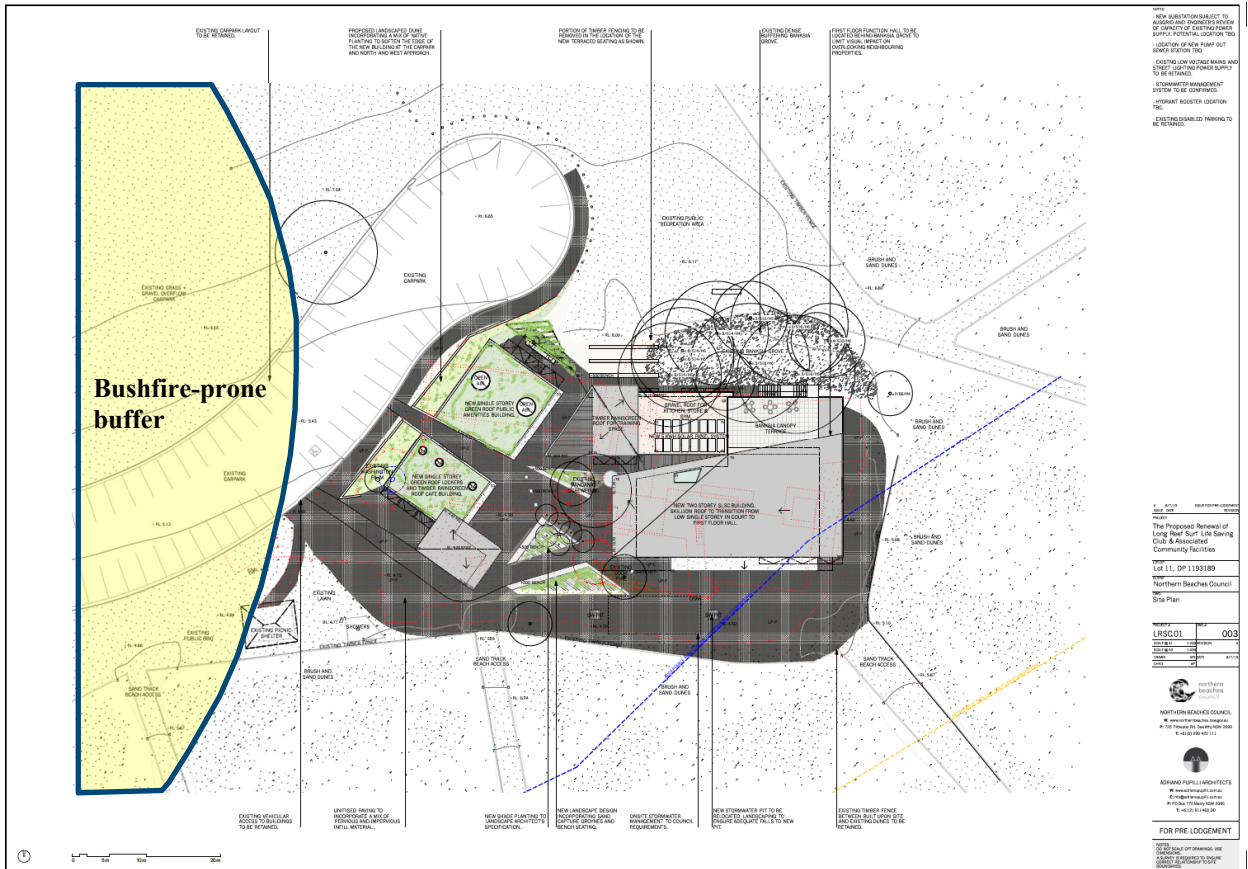


Figure 3 Site plan for Long Reef SLSC renewal project outside bushfire buffer zone

### Bushfire Assessment Conclusions

This bushfire assessment has confirmed that no part of the proposed Long Reef SLSC renewal development is situated on bushfire-prone land, as determined using the current Northern Beaches Council bushfire prone land map. Accordingly, the provisions of *Planning for Bushfire Protection* (2006) do not apply.

Regards,

*Paul de Mar*

Paul de Mar

Technical Director, Bushfire Services

**GHD Accomplish More Together**

T: 61 2 9239 7497 | F: 61 2 9239 7199 | V: 217497 | M: 61 428 643 115 | E: [paul.demar@ghd.com](mailto:paul.demar@ghd.com)  
 Level 15 133 Castlereagh St Sydney NSW 2000 Australia | <http://www.ghd.com/>