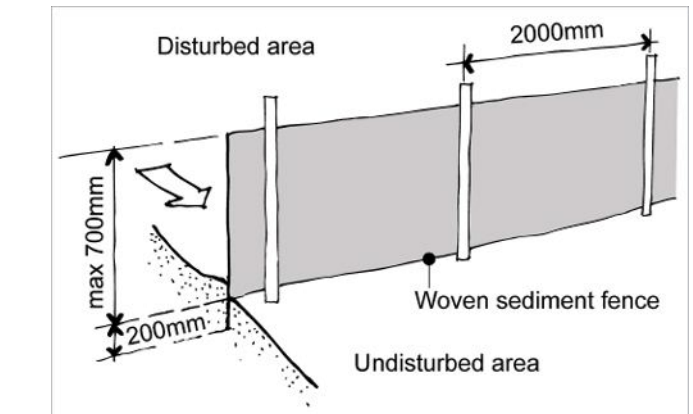


1:100@A1 1:200@A3. Do not scale off plan

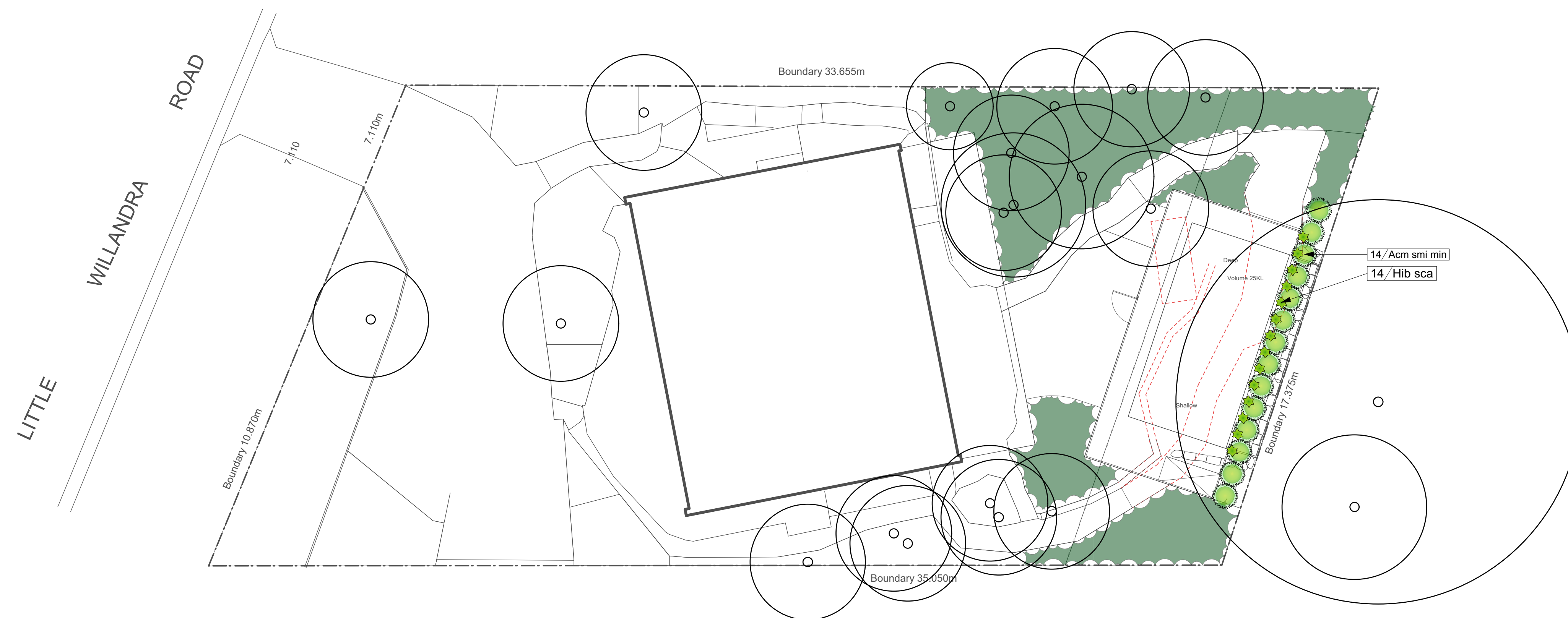


Sedimentation Control Fence
Not to scale.

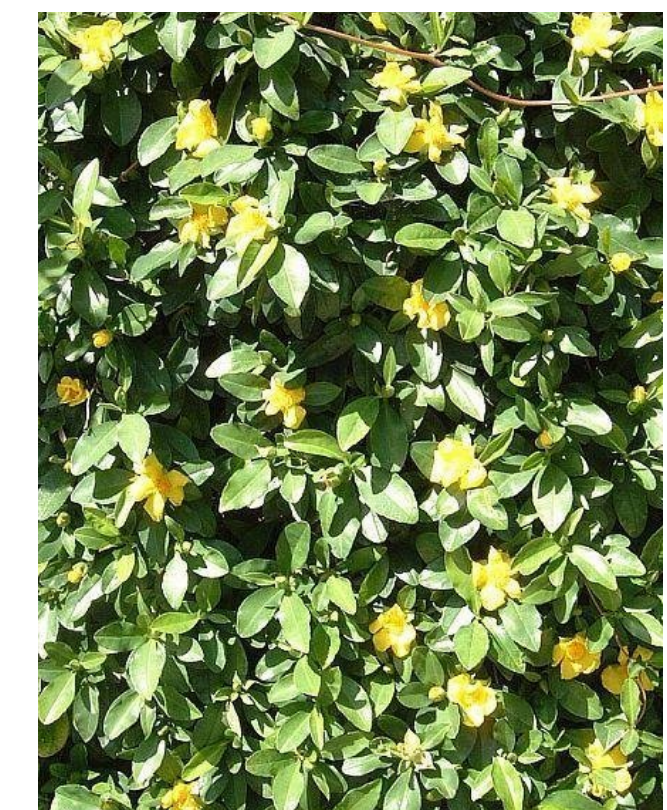
AREA CALCULATION		
	AREA (m ²)	PERCENTAGE
Site	569.6	
Proposed Landscape total as per DCP	186.67	32.77%
Additional area under minimum dimension	57	10.01%
Existing Landscape total as per DCP	192.28	33.76%
DCP compliance	NO	NO

	MULCH AREA
	SOFT-FALL
	SAND
	ARTIFICIAL TURF
	TURF AREA
	TIMBER DECKING
	CONCRETE PAVING
	UNIT PAVING
	STAIRS
	PEBBLE
	TIMBER
	WATER
	MASONRY RETAINING WALL
	STONE RETAINING WALL
	TIMBER RETAINING WALL
	BOULDER RETAINING WALL
	SITE OR WORKS BOUNDARY
+ 88.88	PROPOSED LEVEL
+TW 88.88	TOP OF WALL LEVEL
Paving 1	MATERIAL NAME
Fall →	SURFACE FALL DIRECTION
	SURFACE DRAINS
+88.88	SURVEY (50% GREY LINES)
	EXISTING TREE TO RETAIN
	EXISTING TREE TO REMOVE
	EXISTING ROCK OUTCROP

1:100@A1 1:200@A3. Do not scale off plan



ACMENA S


HIBBERTIA

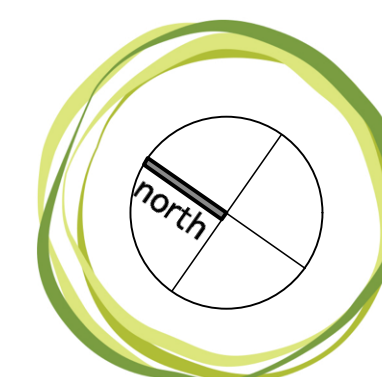
ID	Quantity	Latin Name	Common Name	Plantlist Name	Scheduled Size	Mature Height	Mature Spread
Acm smi min	14	Acmena smithii 'Minor'	Lillypilli	Acm smi minor	200mm	3 - 5m	3.5 - 6m
Hib sca	14	Hibberdia scandens	Golden Guinea Flower	Hibb sca	150mm	0.0 - 0.3m	3.5 - 6m



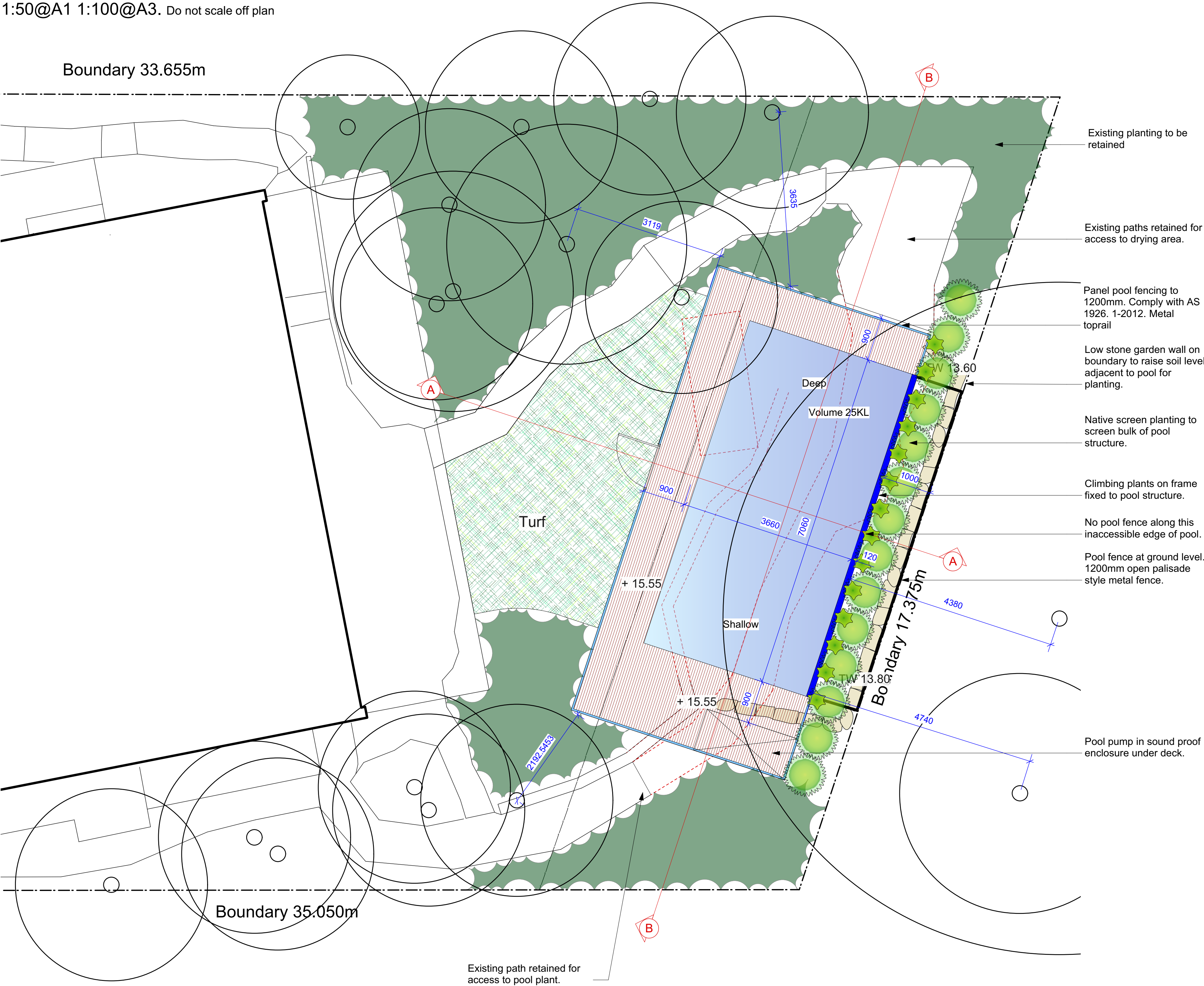
Notes:
Do not scale off plan.
Contractors to check all measurements
onsite before quoting or commencing work.
If abnormalities arise, contact the
Landscape Architect.
This design is copyright and is not to be
reproduced in anyway without written consent
of Jamie King Landscape Architect

C B A	4/7/19	Issue C for DA	Landscape Architect. > This design is copyright and is not to be reproduced in anyway without written consent of Jamie King Landscape Architect
	23/05/19	Issue B for DA	
	13/05/19	DRAFT issue for review	
ISSUE		DATE	REVISION
PROJECT			PROJECT #
36 Little Willandra Road, Cromer			1954
CLIENT	Whitney	DATE #	See above
DWG	Site and planting plan	SCALE @ A1	See Plan
		DRAWN	SA
		CHKD	J.K
		REVISION	

Jamie King Landscape Architect W: www.jamieking.com.au
84 Palmgrove Rd, Avalon, NSW, 2107 T: 0421 517 991 E: jamie@jamieking.com.au



JAMIE KING
LANDSCAPE ARCHITECT
DESIGN • APPROVE • MANAGE



Schedule of Finishes



DECK AND GLASS FENCE



CLIMBING PLANTS ON WIRE MESH TO SCREEN POOL ELEVATION

Legend

- MULCH AREA
- SOFT-FALL
- SAND
- ARTIFICIAL TURF
- TURF AREA
- TIMBER DECKING
- CONCRETE PAVING
- UNIT PAVING
- STAIRS
- PEBBLE
- TIMBER
- WATER
- MASONRY RETAINING WALL
- STONE RETAINING WALL
- TIMBER RETAINING WALL
- BOULDER RETAINING WALL
- SITE OR WORKS BOUNDARY
- PROPOSED LEVEL
- TOP OF WALL LEVEL
- MATERIAL NAME
- SURFACE FALL DIRECTION
- SURFACE DRAINS
- SURVEY (50% GREY LINES)
- EXISTING TREE TO RETAIN
- EXISTING TREE TO REMOVE
- EXISTING ROCK OUTCROP

THIS PLAN IS TO BE READ IN CONJUNCTION WITH THE CONDITIONS OF DEVELOPMENT CONSENT
DA2019/0756

Notes:
>Do not scale off plan.
>Contractors to check all measurements onsite before quoting or commencing work.
>If abnormalities arise, contact the Landscape Architect.
>This design is copyright and is not to be reproduced in anyway without written consent of Jamie King Landscape Architect

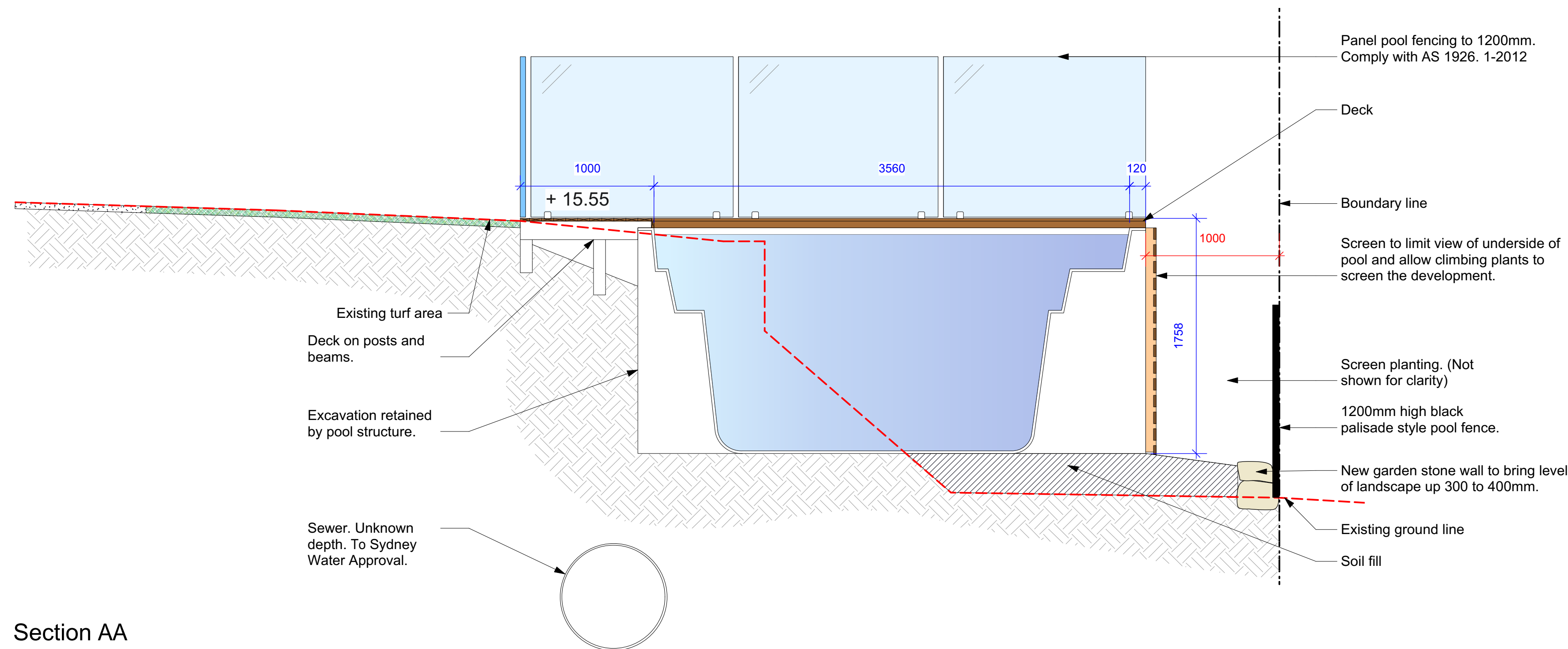
C 4/7/19 Issue C for DA
B 23/05/19 Issue B for DA
A 13/05/19 DRAFT issue for review

ISSUE	DATE	REVISION	PROJECT #
PROJECT	36 Little Willandra Road, Cromer		1954
CLIENT	Witney	DATE # See above SCALE @ A1 See Plan	DWG # Sht-102
DWG	Landscape Detail Plan	DRAWN SA CHKD JK	REVISION

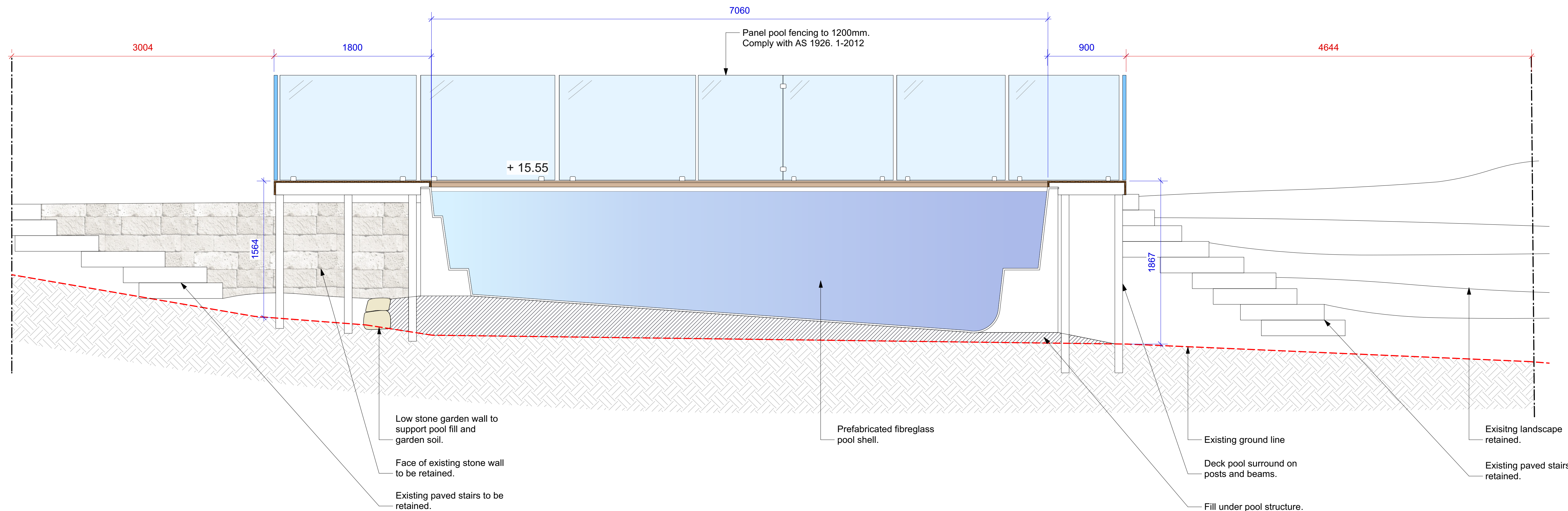
Jamie King Landscape Architect
84 Palmgrove Rd, Avalon, NSW, 2107
W: www.jamieking.com.au
E: jamie@jamieking.com.au



JAMIE KING
LANDSCAPE ARCHITECT
DESIGN ● APPROVE ● MANAGE



Section AA
1:25@A1 1:50@A3. Do not scale off plan



Section BB
1:25@A1 1:50@A3. Do not scale off plan

THIS PLAN IS TO BE READ IN CONJUNCTION WITH THE CONDITIONS OF DEVELOPMENT CONSENT
DA2019/0756

Notes:
>Do not scale off plan.
>Contractors to check all measurements onsite before quoting or commencing work.
>If abnormalities arise, contact the Landscape Architect.
>This design is copyright and is not to be reproduced in anyway without written consent of Jamie King Landscape Architect



JAMIE KING
LANDSCAPE ARCHITECT
DESIGN • APPROVE • MANAGE

C

4/7/19

Issue C for DA

B

23/05/19

Issue B for DA

A

13/05/19

DRAFT issue for review

ISSUE

DATE

REVISION

PROJECT

36 Little Willandra Road, Cromer

PROJECT #

1954

CLIENT

Witney

DATE #

See above

DWG #

Sht-103

DWG

Section Elevations

SCALE @ A1

See Plan

DRAWN

SA

CHKD

JK

REVISION

Jamie King Landscape Architect

W: www.jamieking.com.au

>If abnormalities arise, contact the Landscape Architect.

>This design is copyright and is not to be reproduced in anyway without written consent of Jamie King Landscape Architect