

**10 Fern Creek Road,
Warriewood (Lot 18)**

OCTOBER 2021

**Operational Waste
Management Plan**



**WASTE AUDIT AND
CONSULTANCY SERVICES**

Level 21 / 133 Castlereagh Street
Sydney, NSW 2000

Telephone (02) 9199 4521
www.wasteaudit.com.au

This report contains confidential information. It has been compiled by Waste Audit and Consultancy Services (Aust) Pty Ltd on behalf of PTI Architecture for the 10 Fern Creek Road Warriewood development.

This Waste Management Plan is not a substitute for legal advice on the relevant environmental legislation, which applies to PTI Architecture, its contractors or other bodies. Accordingly, Waste Audit and Consultancy Services (Aust) Pty Ltd will not be liable for any loss or damage that may arise out of this project, other than loss or damage caused as a direct result of Waste Audit and Consultancy Services (Aust) Pty Ltd's negligence.

Table of contents

Table of contents 3

1 Introduction 4

2 Waste Generation 5

2.1 Waste Streams.....5

2.2 Waste Generation Estimates.....5

2.3 Waste Management System6

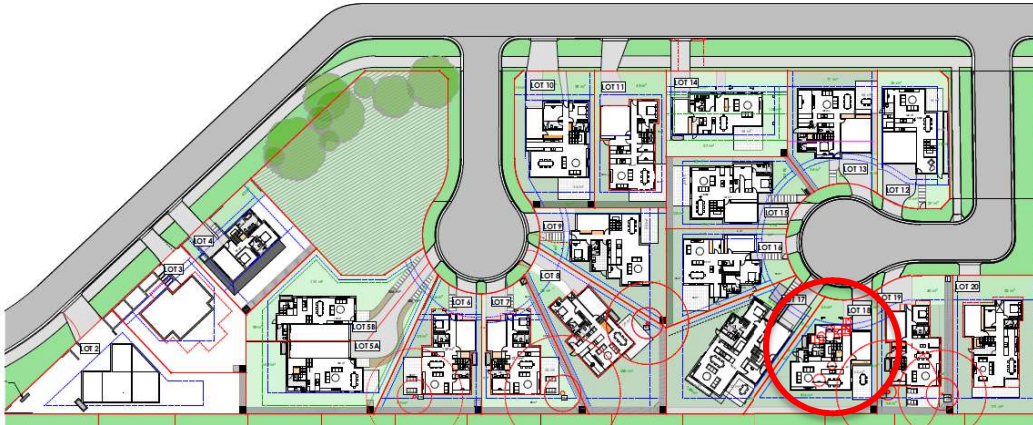
2.4 Operational Procedures.....6

2.5 Bulky Waste7

1 Introduction

This Waste Management Plan (WMP) has been prepared on behalf of PTI Architecture to accompany a Development Application for the 10 Fern Creek Road Warriewood development.

The Operational Waste Management plan applies to Lot 18 of this development.



This Plan has been developed with consideration of Northern Beaches Council and other Authority's requirements. It is intended to inform the design of the waste services by identifying the estimated waste profile for the development and providing the total area required by the recommended equipment/systems.

In doing so this Plan, which includes waste estimates and related management requirements, has been developed in accordance with Northern Beaches Council's *Pittwater 21 Development Control Plan* (specifically *Section C1.12 Waste and Recycling Facilities*).

2 Waste Generation

2.1 Waste Streams

Based on the development profile, the following waste streams would be expected:

- General Waste
- Commingled Recycling (including paper and cardboard)
- Garden waste

2.2 Waste Generation Estimates

Based on the services that Council provides to residential buildings, each resident will require:

- One x 80 litre mobile garbage bins for residual waste;
- One x 140 litre mobile garbage bins for paper/cardboard recyclables;
- One x 140 litre mobile garbage bins for commingled recyclables; and
- One x 240 litre mobile garbage bins for garden organics.

These are illustrated below:



2.3 Waste Management System

Residents will be provided with the appropriate bins for the waste, recyclables and garden waste/organics.

Council services for these are:

- General waste serviced weekly
- Recycling and garden waste serviced fortnightly

All bins will need to be placed at kerbside weekly or fortnightly as per Council's collection schedule.

Details for each stream (ie., what can and should not be deposited into each stream), can be found at: <https://www.northernbeaches.nsw.gov.au/services/rubbish-and-recycling/bin-guide>

Council provides a range of additional information to assist residents improve waste management. Details can be found at: <https://www.northernbeaches.nsw.gov.au/services/rubbish-and-recycling/a-to-z-guide-to-recycling-reuse-and-disposal>;

<https://www.northernbeaches.nsw.gov.au/services/rubbish-and-recycling/kimbriki-resource-recovery-centre>; and

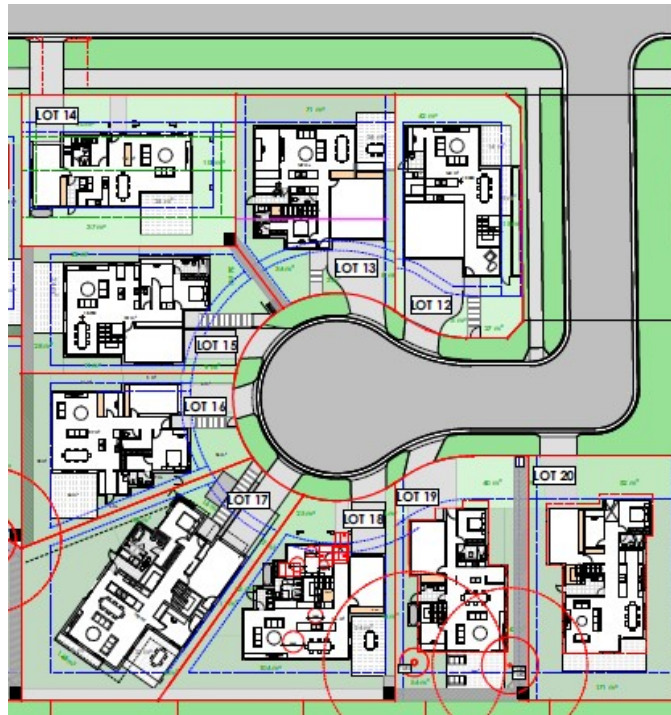
<https://www.northernbeaches.nsw.gov.au/services/rubbish-and-recycling/waste-reduction>

2.4 Operational Procedures

The following summarises the recommended waste and recycling systems that will be implemented. These recommendations are based on the Northern Beaches Council's requirements for residential developments.

- i. Bins will be located within each of the premises and stored at the front of the property or in the garage.
- ii. Residents will be required to place bins out onto the kerbside for collection.
- iii. All bins that are being serviced will need to be placed onto the kerbside the night before collection. Council indicates that servicing will occur on Fridays.
- iv. Bins are also to be removed from kerbside on the same day of servicing (ie., within 24 hours).
- v. Bins are to be spaced a minimum of 20 centimetres apart and clear of any parked vehicles or any other object that could obstruct servicing by Council's collection vehicle(s).

The following illustrates the roadway where the bins from each residence will be placed for servicing by the Council:



2.5 Bulky Waste

Council provides a scheduled “clean up service” for the disposal of larger items. Details of this service (and how to book), can be found at:

<https://www.northernbeaches.nsw.gov.au/node/15352>