

NB: THIS BUILDING HAS NOT BEEN DOCUMENTED AS A BIM MODEL. THE DOCUMENTS ARE STRICTLY REPRESENTATIONAL AND THEY HAVE BEEN PRODUCED SOLELY TO BE PRINTED OUT (OR CONVERTED AS PDF FORMAT) WITH THE INFORMATION CONTAINED THEREIN TO BE READ OFF THE PRINTED 2D DRAWINGS (OR PDFs). THEY ARE NOT TO BE USED AS THE BASIS OF SIMULATED CONSTRUCTION OR CONSTRUCTION SET-OUTS. BUREAU SRH ARE NOT LIABLE FOR THE DOCUMENTS BEING USED IN ANY MANNER EXCEPT THE MANNER DESCRIBED ABOVE, AND BUREAU SRH WILL NOT BE RESPONSIBLE FOR ANY INACCURACIES OR DISCREPANCIES WHICH RESULT FROM USING THE DOCUMENTS IN ANY OTHER WAY.
 IF, BY PRIOR AGREEMENT, YOU HAVE RECEIVED ELECTRONIC DRAWING FILES, THESE DOCUMENTS MUST BE COMPARED TO, AND READ IN CONJUNCTION WITH, THE LATEST ISSUE OF THE ORIGINAL HARD COPY, IN ORDER TO ENSURE THE ACCURACY OF THE INFORMATION CONTAINED AND TO FURTHER ENSURE THAT NO MODIFICATIONS HAVE BEEN MADE TO THE DOCUMENTS.
 THE INFORMATION CONTAINED IN THE ELECTRONIC FILES FOR THE ABOVE PROJECT HAS BEEN CREATED BY BUREAU SRH AND REMAINS THE INTELLECTUAL PROPERTY OF BUREAU SRH. WHILE BUREAU SRH HAS MADE EVERY APPROPRIATE EFFORT TO ENSURE THE ACCURACY OF THESE DOCUMENTS, IT CANNOT GUARANTEE THAT THESE DOCUMENTS CONTAIN COMPLETE AND ACCURATE INFORMATION.

1 **SITE PLAN**
1:200

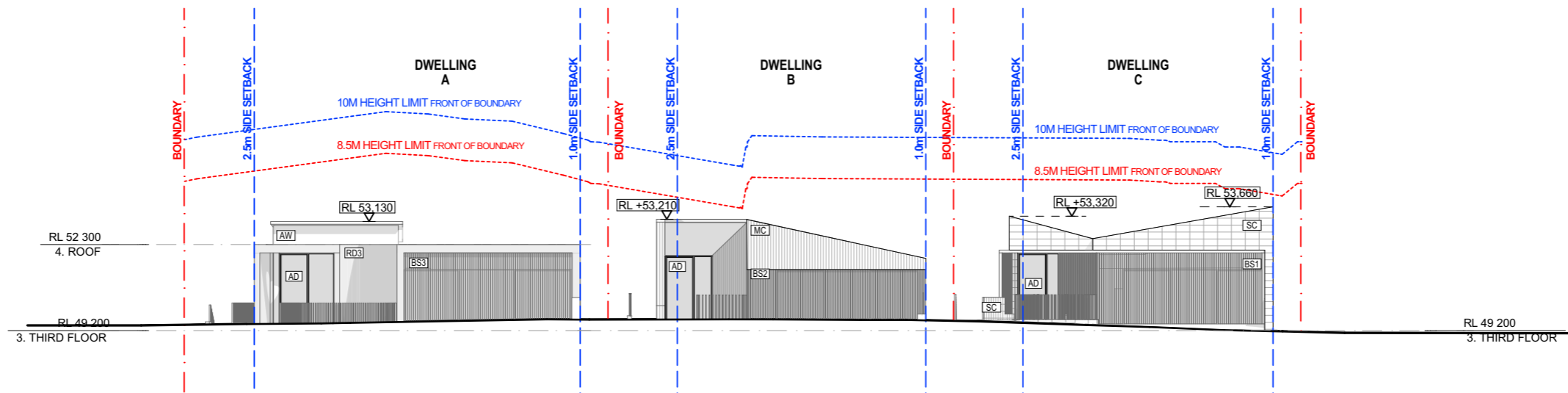
BUREAU SRH | architecture
 NOMINATED ARCHITECT: SIMON HANSON # 6739
 GENERAL: THIS DRAWING SHALL BE READ IN CONJUNCTION WITH ALL OTHER ARCHITECTURAL & CONSULTANT DRAWINGS & SPECIFICATIONS & WITH SUCH OTHER WRITTEN INSTRUCTIONS ISSUED DURING THE COURSE OF THE CONTRACT. I NOTIFY ARCHITECT OF ANY DISCREPANCIES BEFORE PROCEEDING WITH WORK. MATERIALS & WORKMANSHIP SHALL BE IN ACCORDANCE WITH THE SPECIFICATION, CURRENT SAA CODES, BUILDING REGULATIONS & OTHER STATUTORY AUTHORITIES. I VERIFY ALL DIMENSIONS ON SITE AND NOTIFY ARCHITECT OF ANY DISCREPANCIES. I USE FIGURED DIMENSIONS ONLY. I COPYRIGHT, ALL RIGHT RESERVED. THIS DRAWING IS COPYRIGHT AND CONFIDENTIAL, & MAY NOT BE REPRODUCED BY ANY PERSON WITHOUT WRITTEN PERMISSION OF THE ABOVE COMPANY & IS NOT TO BE USED IN ANY MANNER PREJUDICIAL TO THE INTERESTS OF THAT COMPANY. THIS DRAWING AND ATTACHED SHEET REMAIN THE PROPERTY OF BUREAU SRH PTY LTD.
 CAD FILES: INFORMATION IN ELECTRONIC FILES TRANSMITTED REMAIN THE INTELLECTUAL PROPERTY OF BUREAU SRH. BUREAU SRH DO NOT GUARANTEE CAD DOCUMENTS CONTAIN COMPLETE AND ACCURATE INFORMATION. CAD DOCUMENTS MUST BE COMPARED TO, AND READ IN CONJUNCTION WITH CURRENT HARD COPY DOCUMENTS. BUREAU SRH ARE NOT LIABLE FOR ALTERATIONS TO CAD FILES BY THIRD PARTIES.

STUDIO 3 | 2 VERONA STREET | PADDINGTON | NSW | 2021 | AUSTRALIA |
 ABN: 94 115 880 834 | TEL: +61 2 9380 4666 | admin@bureau.srh.com
 LEGEND:
 ○ TREES TO BE REMOVED, REFER TO DEMOLITION PLAN AND ARBORIST REPORT

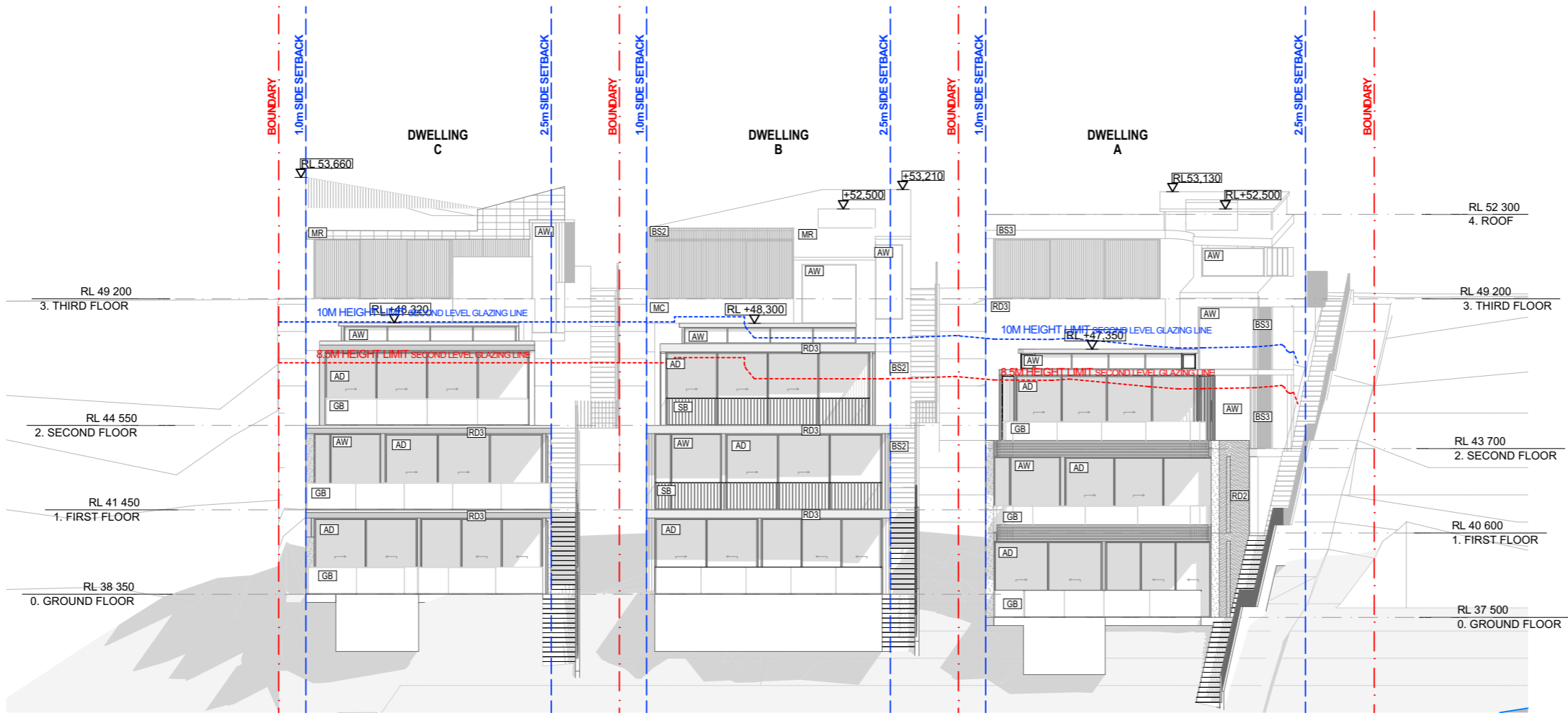
REV	DATE	NAME
A	01/05/2023	ISSUE FOR COUNCIL SUBMISSION

RESIDENTIAL DWELLINGS		173-175 WHALE BEACH RD, WHALE BEACH		PROJECT No: 22077
STAGE: Development Application		DRAWING TITLE: NOTIFICATION PLANS		DRAWING No: NF 700
SCALE @ A3: 1:200	NORTH	CLIENT: P. HEYWORTH	CHECKED: HHH	REVISION: A
		DRAWN: KD	APPROVED: SRH	

173-175 WHALE BEACH RD, WHALE BEACH, NSW 2217. 1:200. 15/05/2023. 173-175 WHALE BEACH RD, WHALE BEACH, NSW 2217. 1:200. 15/05/2023. 173-175 WHALE BEACH RD, WHALE BEACH, NSW 2217. 1:200. 15/05/2023.



1 **E-01 SOUTH (STREET) ELEVATION**
1:200



2 **E-02 NORTH ELEVATION**
1:200

NB: THIS BUILDING HAS NOT BEEN DOCUMENTED AS A BIM MODEL. THE DOCUMENTS ARE STRICTLY REPRESENTATIONAL AND THEY HAVE BEEN PRODUCED SOLELY TO BE PRINTED OUT (OR CONVERTED AS PDF FORMAT) WITH THE INFORMATION CONTAINED THEREON TO BE READ OFF THE PRINTED 2D DRAWINGS (OR PDFs). THEY ARE NOT TO BE USED AS THE BASIS OF BIM STYLE COORDINATION OR CONSTRUCTION SETOUTS. BUREAU SRH ARE NOT LIABLE FOR THE DOCUMENTS BEING USED IN ANY MANNER EXCEPT THE MANNER DESCRIBED ABOVE, AND BUREAU SRH WILL NOT BE RESPONSIBLE FOR ANY INACCURACIES OR DISCREPANCIES WHICH RESULT FROM USING THE DOCUMENTS IN ANY OTHER WAY.
IF, BY PRIOR AGREEMENT, YOU HAVE RECEIVED ELECTRONIC DRAWING FILES, THESE DOCUMENTS MUST BE COMPARED TO, AND READ IN CONJUNCTION WITH, THE LATEST ISSUE OF THE ORIGINAL HARD COPY, IN ORDER TO ENSURE THE ACCURACY OF THE INFORMATION CONTAINED AND TO FURTHER ENSURE THAT NO MODIFICATIONS HAVE BEEN MADE TO THE DOCUMENTS.
THE INFORMATION CONTAINED IN THE ELECTRONIC FILES FOR THE ABOVE PROJECT HAS BEEN CREATED BY BUREAU SRH AND REMAINS THE INTELLECTUAL PROPERTY OF BUREAU SRH. WHILE BUREAU SRH HAS MADE EVERY APPROPRIATE EFFORT TO ENSURE THE ACCURACY OF THESE DOCUMENTS, IT CANNOT GUARANTEE THAT THESE DOCUMENTS CONTAIN COMPLETE AND ACCURATE INFORMATION.

BUREAU SRH | architecture
NOMINATED ARCHITECT: SIMON HANSON # 6739
GENERAL: THIS DRAWING SHALL BE READ IN CONJUNCTION WITH ALL OTHER ARCHITECTURAL & CONSULTANT DRAWINGS & SPECIFICATIONS & WITH SUCH OTHER WRITTEN INSTRUCTIONS ISSUED DURING THE COURSE OF THE CONTRACT. NOTIFY ARCHITECT OF ANY DISCREPANCIES BEFORE PROCEEDING WITH WORK. MATERIALS & WORKMANSHIP SHALL BE IN ACCORDANCE WITH THE SPECIFICATION, CURRENT SAA CODES, BUILDING REGULATIONS & OTHER STATUTORY AUTHORITIES. VERIFY ALL DIMENSIONS ON SITE AND NOTIFY ARCHITECT OF ANY DISCREPANCIES. USE FIGURED DIMENSIONS ONLY. (COPYRIGHT, ALL RIGHT RESERVED) THIS DRAWING IS COPYRIGHTED AND CONFIDENTIAL, & MAY NOT BE REPRODUCED BY ANY PERSON WITHOUT WRITTEN PERMISSION OF THE ABOVE COMPANY & IS NOT TO BE USED IN ANY MANNER PREJUDICIAL TO THE INTERESTS OF THAT COMPANY. THIS DRAWING AND ATTACHED SHEET REMAIN THE PROPERTY OF BUREAU SRH PTY LTD.
CAD FILES: INFORMATION IN ELECTRONIC FILES TRANSMITTED REMAIN THE INTELLECTUAL PROPERTY OF BUREAU SRH. BUREAU SRH DO NOT GUARANTEE CAD DOCUMENTS CONTAIN COMPLETE AND ACCURATE INFORMATION. CAD DOCUMENTS MUST BE COMPARED TO, AND READ IN CONJUNCTION WITH CURRENT HARD COPY DOCUMENTS. BUREAU SRH ARE NOT LIABLE FOR ALTERATIONS TO CAD FILES BY THIRD PARTIES.

STUDIO 3 | 2 VERONA STREET | PADDINGTON | NSW | 2021 | AUSTRALIA |
ABN: 94 115 880 834 | TEL: +61 2 9380 4666 | admin@bureau.srh.com

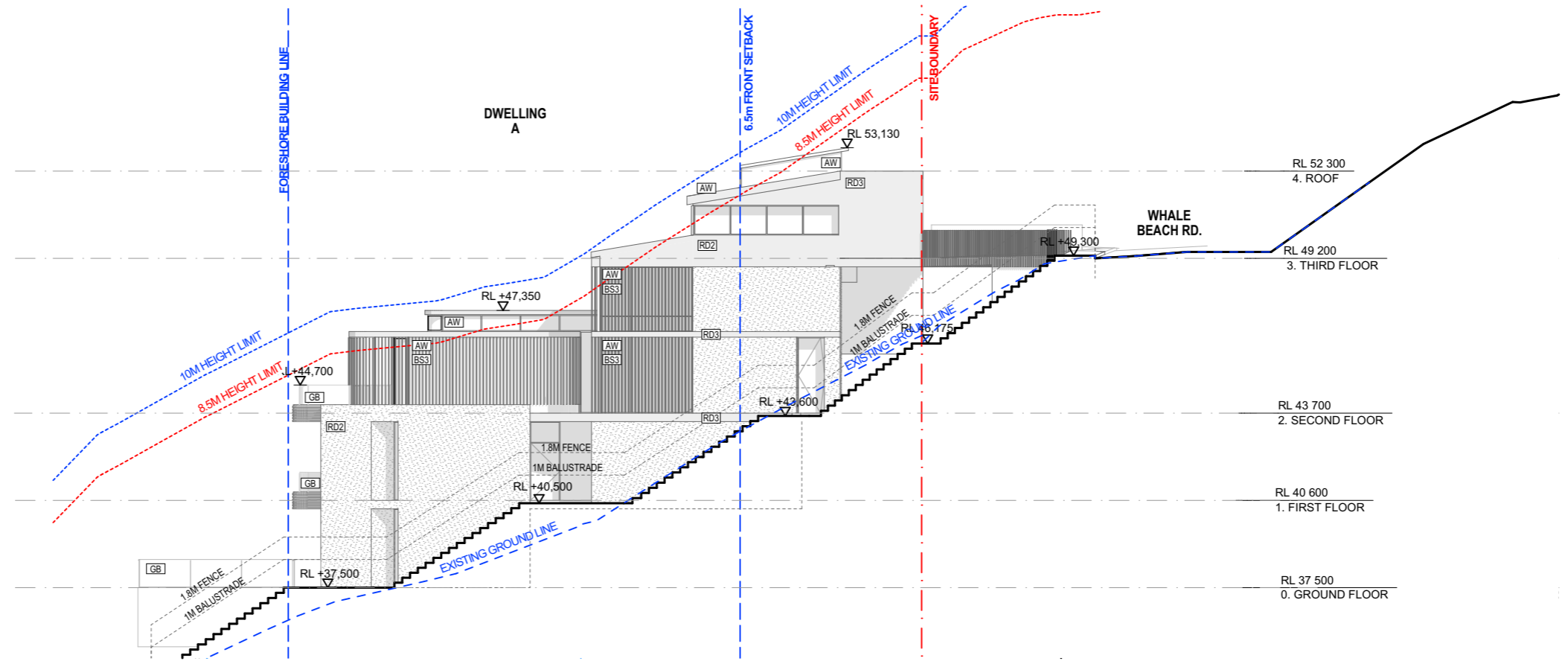
LEGEND:
AD - ALUMINIUM FRAME DOOR
AW - ALUMINIUM FRAME WINDOW
GB - GLASS BALUSTRADE
GFD - GARAGE FOLDING DOOR
BS1 - BATTEN SCREEN TYPE 1
BS2 - BATTEN SCREEN TYPE 2
BS3 - BATTEN SCREEN TYPE 3
SC - STONE CLADDING
MC - METAL CLADDING
RD1 - RENDER FINISH TYPE 1
RD2 - RENDER FINISH TYPE 2
RD3 - RENDER FINISH TYPE 3
SB - STEEL BALUSTRADE

REV	DATE	NAME
A	01/05/2023	ISSUE FOR COUNCIL SUBMISSION

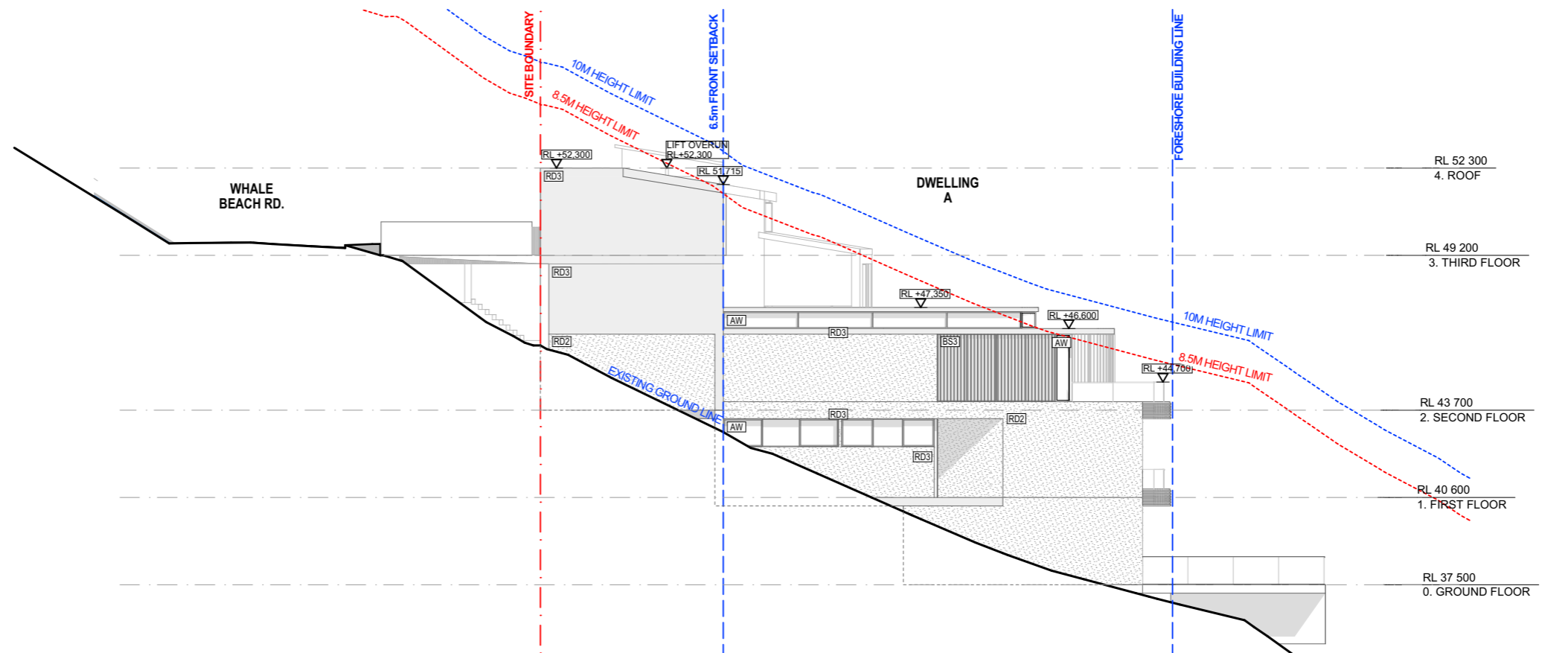
RESIDENTIAL DWELLINGS		173-175 WHALE BEACH RD, WHALE BEACH		PROJECT No: 22077
STAGE: Development Application	DRAWING TITLE: NOTIFICATION PLANS	DRAWING No: NF 701		REVISION: A
SCALE @ A3: 1:200	NORTH	CLIENT: P. HEYWORTH	CHECKED: HHH	APPROVED: SRH

NOT FOR CONSTRUCTION

173-175 WHALE BEACH RD, WHALE BEACH, NSW 22077. BUREAU SRH PTY LTD. 2023. ALL RIGHTS RESERVED.



1 **E-03 DWELLING-A WEST ELEVATION**
1:200



2 **E-04 DWELLING-A EAST ELEVATION**
1:200

NB: THIS BUILDING HAS NOT BEEN DOCUMENTED AS A BIM MODEL. THE DOCUMENTS ARE STRICTLY REPRESENTATIONAL AND THEY HAVE BEEN PRODUCED SOLELY TO BE PRINTED OUT (OR CONVERTED AS PDF FORMAT) WITH THE INFORMATION CONTAINED THEREON TO BE READ OFF THE PRINTED 2D DRAWINGS (OR PDFs). THEY ARE NOT TO BE USED AS THE BASIS OF BIM STYLE COORDINATION OR CONSTRUCTION SET-OUTS. BUREAU SRH ARE NOT LIABLE FOR THE DOCUMENTS BEING USED IN ANY MANNER EXCEPT THE MANNER DESCRIBED ABOVE, AND BUREAU SRH WILL NOT BE RESPONSIBLE FOR ANY INACCURACIES OR DISCREPANCIES WHICH RESULT FROM USING THE DOCUMENTS IN ANY OTHER WAY. IF, BY PRIOR AGREEMENT, YOU HAVE RECEIVED ELECTRONIC DRAWING FILES, THESE DOCUMENTS MUST BE COMPARED TO, AND READ IN CONJUNCTION WITH, THE LATEST ISSUE OF THE ORIGINAL HARD COPY, IN ORDER TO ENSURE THE ACCURACY OF THE INFORMATION CONTAINED AND TO FURTHER ENSURE THAT NO MODIFICATIONS HAVE BEEN MADE TO THE DOCUMENTS. THE INFORMATION CONTAINED IN THE ELECTRONIC FILES FOR THE ABOVE PROJECT HAS BEEN CREATED BY BUREAU SRH AND REMAINS THE INTELLECTUAL PROPERTY OF BUREAU SRH. WHILE BUREAU SRH HAS MADE EVERY APPROPRIATE EFFORT TO ENSURE THE ACCURACY OF THESE DOCUMENTS, IT CANNOT GUARANTEE THAT THESE DOCUMENTS CONTAIN COMPLETE AND ACCURATE INFORMATION.

BUREAU SRH | architecture
 NOMINATED ARCHITECT: SIMON HANSON # 6739
 GENERAL: THIS DRAWING SHALL BE READ IN CONJUNCTION WITH ALL OTHER ARCHITECTURAL & CONSULTANT DRAWINGS & SPECIFICATIONS & WITH SUCH OTHER WRITTEN INSTRUCTIONS ISSUED DURING THE COURSE OF THE CONTRACT. NOTIFY ARCHITECT OF ANY DISCREPANCIES BEFORE PROCEEDING WITH WORK. MATERIALS & WORKMANSHIP SHALL BE IN ACCORDANCE WITH THE SPECIFICATION, CURRENT SAA CODES, BUILDING REGULATIONS & OTHER STATUTORY AUTHORITIES. VERIFY ALL DIMENSIONS ON SITE AND NOTIFY ARCHITECT OF ANY DISCREPANCIES. USE FIGURED DIMENSIONS ONLY. COPYRIGHT, ALL RIGHTS RESERVED. THIS DRAWING IS COPYRIGHT AND CONFIDENTIAL & MAY NOT BE REPRODUCED BY ANY PERSON WITHOUT WRITTEN PERMISSION OF THE ABOVE COMPANY & IS NOT TO BE USED IN ANY MANNER PREJUDICIAL TO THE INTERESTS OF THAT COMPANY. THIS DRAWING AND ATTACHED SHEET REMAIN THE PROPERTY OF BUREAU SRH PTY LTD.
 CAD FILES: INFORMATION IN ELECTRONIC FILES TRANSMITTED REMAIN THE INTELLECTUAL PROPERTY OF BUREAU SRH. BUREAU SRH DO NOT GUARANTEE CAD DOCUMENTS CONTAIN COMPLETE AND ACCURATE INFORMATION. CAD DOCUMENTS MUST BE COMPARED TO, AND READ IN CONJUNCTION WITH CURRENT HARD COPY DOCUMENTS. BUREAU SRH ARE NOT LIABLE FOR ALTERATIONS TO CAD FILES BY THIRD PARTIES.

STUDIO 3 | 2 VERONA STREET | PADDINGTON | NSW | 2021 | AUSTRALIA |
 ABN: 94 115 880 834 | TEL: +61 2 9380 4666 | admin@bureau.srh.com

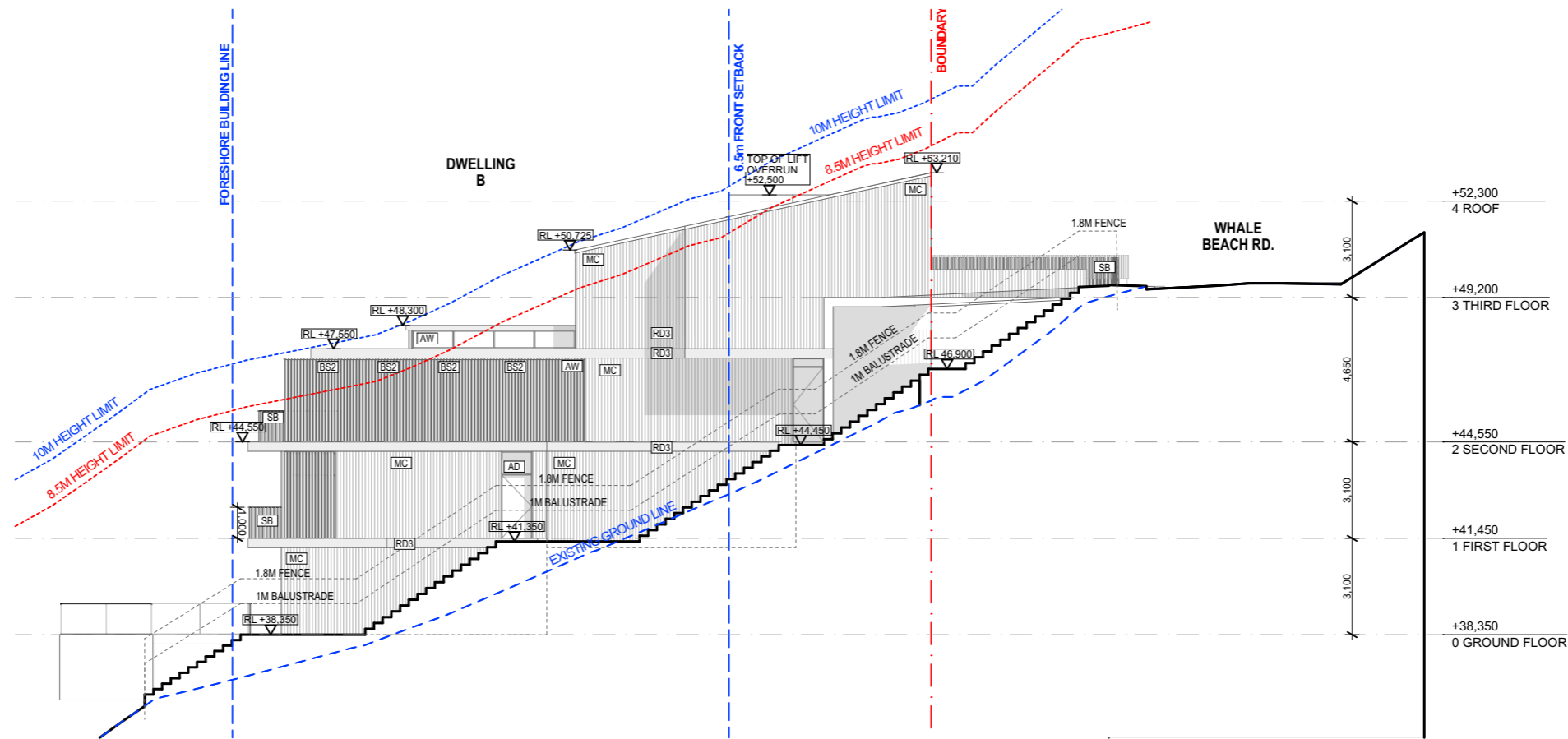
LEGEND:
 AD - ALUMINIUM FRAME DOOR
 AW - ALUMINIUM FRAME WINDOW
 GB - GLASS BALUSTRADE
 GFD - GARAGE FOLDING DOOR
 BS1 - BATTEN SCREEN TYPE 1
 BS2 - BATTEN SCREEN TYPE 2
 BS3 - BATTEN SCREEN TYPE 3
 SC - STONE CLADDING
 MC - METAL CLADDING
 RD1 - RENDER FINISH TYPE 1
 RD2 - RENDER FINISH TYPE 2
 RD3 - RENDER FINISH TYPE 3
 SB - STEEL BALUSTRADE

REV	DATE	NAME
A	01/05/2023	ISSUE FOR COUNCIL SUBMISSION

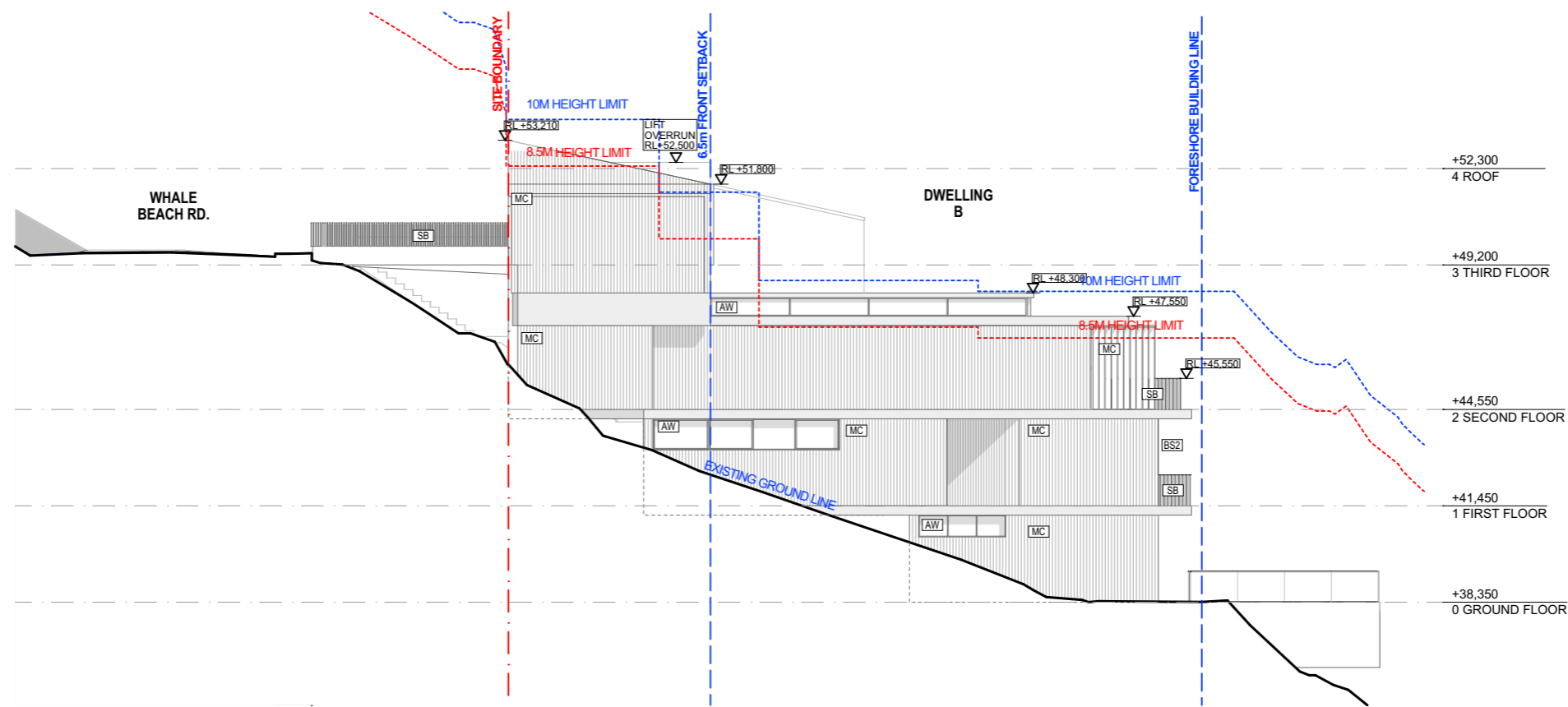
RESIDENTIAL DWELLINGS
173-175 WHALE BEACH RD, WHALE BEACH
 PROJECT No: **22077**
 STAGE: **Development Application**
 DRAWING TITLE: **NOTIFICATION PLANS**
 CLIENT: **P. HEYWORTH** CHECKED: **HHH**
 DRAWN: **KD** APPROVED: **SRH**

DRAWING No: **NF 702**
 REVISION: **A**

NOT FOR CONSTRUCTION



1 E-05 DWELLING-B WEST ELEVATION
1:200



2 E-06 DWELLING-B EAST ELEVATION
1:200

NB: THIS BUILDING HAS NOT BEEN DOCUMENTED AS A BIM MODEL. THE DOCUMENTS ARE STRICTLY REPRESENTATIONAL AND THEY HAVE BEEN PRODUCED SOLELY TO BE PRINTED OUT (OR CONVERTED AS PDF FORMAT) WITH THE INFORMATION CONTAINED THEREON TO BE READ OFF THE PRINTED DRAWINGS (OR PDFs). THEY ARE NOT TO BE USED AS THE BASIS OF BIM STYLE COORDINATION OR CONSTRUCTION SETOUTS. BUREAU SRH ARE NOT LIABLE FOR THE DOCUMENTS BEING USED IN ANY MANNER EXCEPT THE MANNER DESCRIBED ABOVE, AND BUREAU SRH WILL NOT BE RESPONSIBLE FOR ANY INACCURACIES OR DISCREPANCIES WHICH RESULT FROM USING THE DOCUMENTS IN ANY OTHER WAY.
IF, BY PRIOR AGREEMENT, YOU HAVE RECEIVED ELECTRONIC DRAWING FILES, THESE DOCUMENTS MUST BE COMPARED TO, AND READ IN CONJUNCTION WITH, THE LATEST ISSUE OF THE ORIGINAL HARD COPY, IN ORDER TO ENSURE THE ACCURACY OF THE INFORMATION CONTAINED AND TO FURTHER ENSURE THAT NO MODIFICATIONS HAVE BEEN MADE TO THE DOCUMENTS.
THE INFORMATION CONTAINED IN THE ELECTRONIC FILES FOR THE ABOVE PROJECT HAS BEEN CREATED BY BUREAU SRH AND REMAINS THE INTELLECTUAL PROPERTY OF BUREAU SRH. WHILE BUREAU SRH HAS MADE EVERY APPROPRIATE EFFORT TO ENSURE THE ACCURACY OF THESE DOCUMENTS, IT CANNOT GUARANTEE THAT THESE DOCUMENTS CONTAIN COMPLETE AND ACCURATE INFORMATION.

BUREAU SRH | architecture
 NOMINATED ARCHITECT: SIMON HANSON # 6739
 GENERAL: THIS DRAWING SHALL BE READ IN CONJUNCTION WITH ALL OTHER ARCHITECTURAL & CONSULTANT DRAWINGS & SPECIFICATIONS & WITH SUCH OTHER WRITTEN INSTRUCTIONS ISSUED DURING THE COURSE OF THE CONTRACT. NOTIFY ARCHITECT OF ANY DISCREPANCIES BEFORE PROCEEDING WITH WORK. MATERIALS & WORKMANSHIP SHALL BE IN ACCORDANCE WITH THE SPECIFICATION, CURRENT SAA CODES, BUILDING REGULATIONS & OTHER STATUTORY AUTHORITIES. VERIFY ALL DIMENSIONS ON SITE AND NOTIFY ARCHITECT OF ANY DISCREPANCIES. USE FIGURED DIMENSIONS ONLY. COPYRIGHT, ALL RIGHTS RESERVED. THIS DRAWING IS COPYRIGHTED AND CONFIDENTIAL & MAY NOT BE REPRODUCED BY ANY PERSON WITHOUT WRITTEN PERMISSION OF THE ABOVE COMPANY & IS NOT TO BE USED IN ANY MANNER PREJUDICIAL TO THE INTERESTS OF THAT COMPANY. THIS DRAWING AND ATTACHED SHEET REMAIN THE PROPERTY OF BUREAU SRH PTY LTD.
 CAD FILES: INFORMATION IN ELECTRONIC FILES TRANSMITTED REMAIN THE INTELLECTUAL PROPERTY OF BUREAU SRH. BUREAU SRH DO NOT GUARANTEE CAD DOCUMENTS CONTAIN COMPLETE AND ACCURATE INFORMATION. CAD DOCUMENTS MUST BE COMPARED TO, AND READ IN CONJUNCTION WITH CURRENT HARD COPY DOCUMENTS. BUREAU SRH ARE NOT LIABLE FOR ALTERATIONS TO CAD FILES BY THIRD PARTIES.

STUDIO 3 | 2 VERONA STREET | PADDINGTON | NSW | 2021 | AUSTRALIA |
 ABN: 94 115 880 834 | TEL: +61 2 9380 4666 | admin@bureau.srh.com

LEGEND:
 AD - ALUMINIUM FRAME DOOR
 AW - ALUMINIUM FRAME WINDOW
 GB - GLASS BALUSTRADE
 GFD - GARAGE FOLDING DOOR
 BS1 - BATTEN SCREEN TYPE 1
 BS2 - BATTEN SCREEN TYPE 2
 BS3 - BATTEN SCREEN TYPE 3
 SC - STONE CLADDING
 MC - METAL CLADDING
 RD1 - RENDER FINISH TYPE 1
 RD2 - RENDER FINISH TYPE 2
 RD3 - RENDER FINISH TYPE 3
 SB - STEEL BALUSTRADE

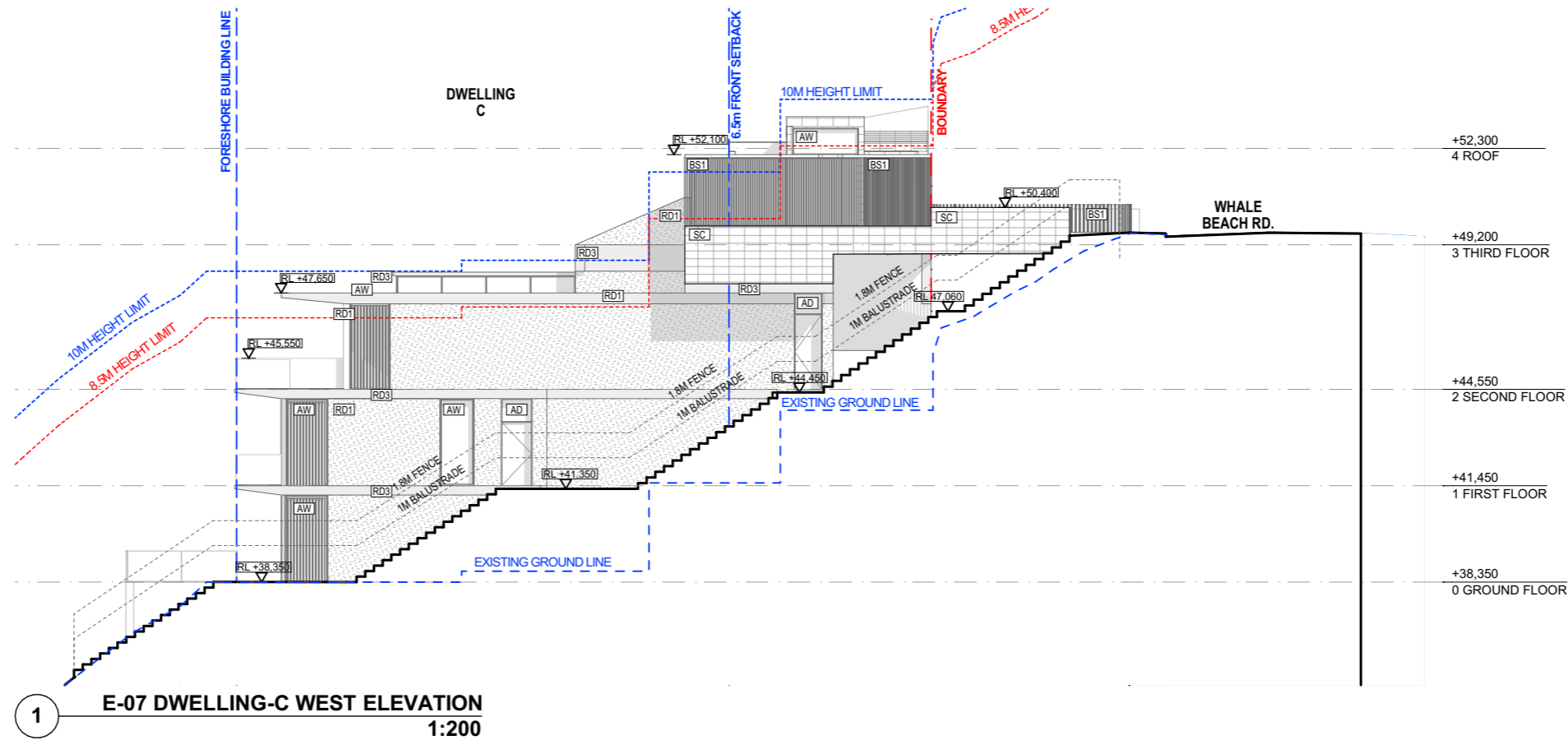
REV	DATE	NAME
A	01/05/2023	ISSUE FOR COUNCIL SUBMISSION

RESIDENTIAL DWELLINGS
173-175 WHALE BEACH RD, WHALE BEACH
 PROJECT No: 22077

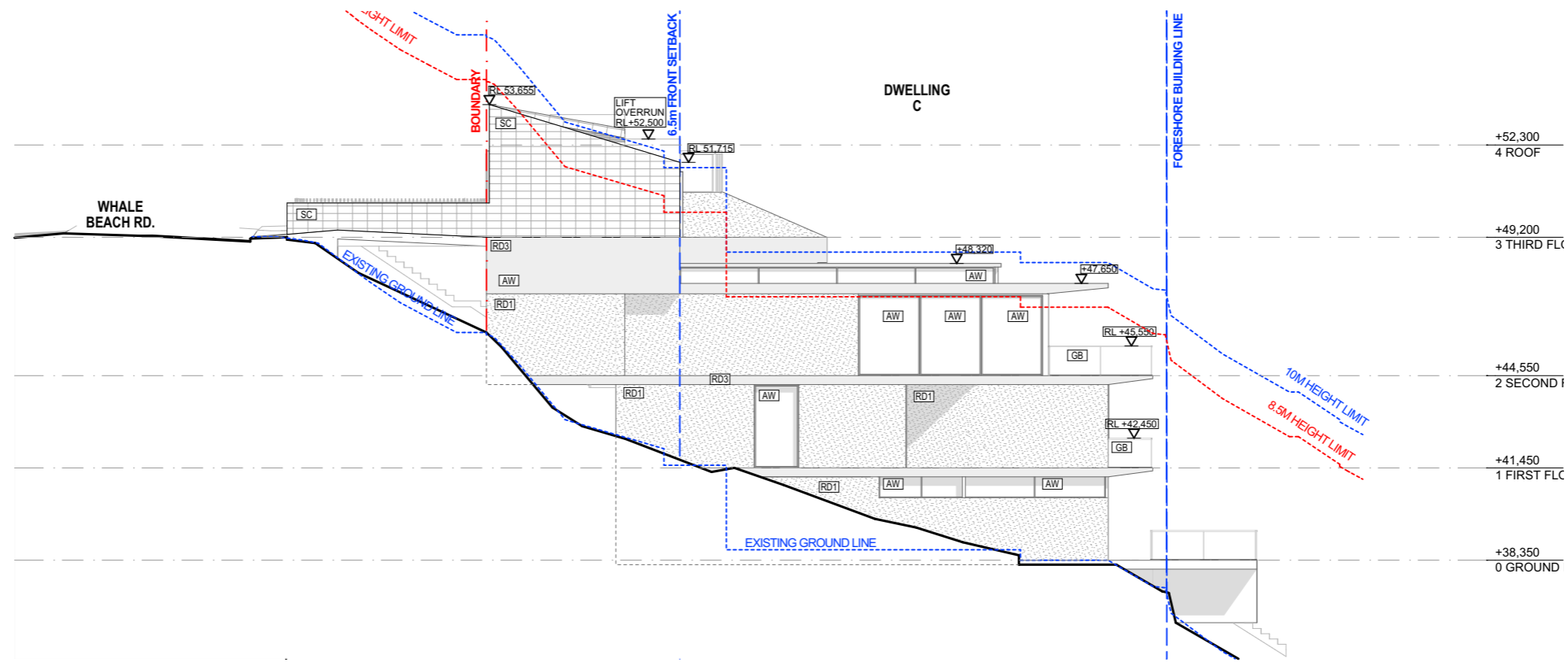
STAGE: Development Application
 DRAWING TITLE: NOTIFICATION PLANS
 CLIENT: P. HEYWORTH
 CHECKED: HHH
 DRAWN: KD
 APPROVED: SRH

DRAWING No: **NF 703**
 REVISION: **A**

NOT FOR CONSTRUCTION



1 E-07 DWELLING-C WEST ELEVATION
1:200



2 E-08 DWELLING-C EAST ELEVATION
1:200

NB: THIS BUILDING HAS NOT BEEN DOCUMENTED AS A BIM MODEL. THE DOCUMENTS ARE STRICTLY REPRESENTATIONAL AND THEY HAVE BEEN PRODUCED SOLELY TO BE PRINTED OUT (OR CONVERTED AS PDF FORMAT) WITH THE INFORMATION CONTAINED THEREON TO BE READ OFF THE PRINTED 2D DRAWINGS (OR PDFs). THEY ARE NOT TO BE USED AS THE BASIS OF SIM-STYLE COORDINATION OR CONSTRUCTION SET-OUTS. BUREAU SRH ARE NOT LIABLE FOR THE DOCUMENTS BEING USED IN ANY MANNER EXCEPT THE MANNER DESCRIBED ABOVE, AND BUREAU SRH WILL NOT BE RESPONSIBLE FOR ANY INACCURACIES OR DISCREPANCIES WHICH RESULT FROM USING THE DOCUMENTS IN ANY OTHER WAY. IF, BY PRIOR AGREEMENT, YOU HAVE RECEIVED ELECTRONIC DRAWING FILES, THESE DOCUMENTS MUST BE COMPARED TO, AND READ IN CONJUNCTION WITH, THE LATEST ISSUE OF THE ORIGINAL HARD COPY, IN ORDER TO ENSURE THE ACCURACY OF THE INFORMATION CONTAINED AND TO FURTHER ENSURE THAT NO MODIFICATIONS HAVE BEEN MADE TO THE DOCUMENTS. THE INFORMATION CONTAINED IN THE ELECTRONIC FILES FOR THE ABOVE PROJECT HAS BEEN CREATED BY BUREAU SRH AND REMAINS THE INTELLECTUAL PROPERTY OF BUREAU SRH. WHILE BUREAU SRH HAS MADE EVERY APPROPRIATE EFFORT TO ENSURE THE ACCURACY OF THESE DOCUMENTS, IT CANNOT GUARANTEE THAT THESE DOCUMENTS CONTAIN COMPLETE AND ACCURATE INFORMATION.

BUREAU SRH | architecture
 NOMINATED ARCHITECT: SIMON HANSON # 6739
 GENERAL: THIS DRAWING SHALL BE READ IN CONJUNCTION WITH ALL OTHER ARCHITECTURAL & CONSULTANT DRAWINGS & SPECIFICATIONS & WITH SUCH OTHER WRITTEN INSTRUCTIONS ISSUED DURING THE COURSE OF THE CONTRACT. NOTIFY ARCHITECT OF ANY DISCREPANCIES BEFORE PROCEEDING WITH WORK. MATERIALS & WORKMANSHIP SHALL BE IN ACCORDANCE WITH THE SPECIFICATION, CURRENT SAA CODES, BUILDING REGULATIONS & OTHER STATUTORY AUTHORITIES. VERIFY ALL DIMENSIONS ON SITE AND NOTIFY ARCHITECT OF ANY DISCREPANCIES. USE FIGURED DIMENSIONS ONLY. COPYRIGHT, ALL RIGHTS RESERVED. THIS DRAWING IS COPYRIGHT AND CONFIDENTIAL & MAY NOT BE REPRODUCED BY ANY PERSON WITHOUT WRITTEN PERMISSION OF THE ABOVE COMPANY & IS NOT TO BE USED IN ANY MANNER PREJUDICIAL TO THE INTERESTS OF THAT COMPANY. THIS DRAWING AND ATTACHED SHEET REMAIN THE PROPERTY OF BUREAU SRH PTY LTD.
 CAD FILES: INFORMATION IN ELECTRONIC FILES TRANSMITTED REMAIN THE INTELLECTUAL PROPERTY OF BUREAU SRH. BUREAU SRH DO NOT GUARANTEE CAD DOCUMENTS CONTAIN COMPLETE AND ACCURATE INFORMATION. CAD DOCUMENTS MUST BE COMPARED TO, AND READ IN CONJUNCTION WITH CURRENT HARD COPY DOCUMENTS. BUREAU SRH ARE NOT LIABLE FOR ALTERATIONS TO CAD FILES BY THIRD PARTIES.

STUDIO 3 | 2 VERONA STREET | PADDINGTON | NSW | 2021 | AUSTRALIA |
 ABN: 94 115 880 834 | TEL: +61 2 9380 4666 | admin@bureau.srh.com

LEGEND:
 AD - ALUMINIUM FRAME DOOR
 AW - ALUMINIUM FRAME WINDOW
 GB - GLASS BALUSTRADE
 GFD - GARAGE FOLDING DOOR
 BS1 - BATTEN SCREEN TYPE 1
 BS2 - BATTEN SCREEN TYPE 2
 BS3 - BATTEN SCREEN TYPE 3
 SC - STONE CLADDING
 MC - METAL CLADDING
 RD1 - RENDER FINISH TYPE 1
 RD2 - RENDER FINISH TYPE 2
 RD3 - RENDER FINISH TYPE 3
 SB - STEEL BALUSTRADE

REV	DATE	NAME
A	01/05/2023	ISSUE FOR COUNCIL SUBMISSION

RESIDENTIAL DWELLINGS
173-175 WHALE BEACH RD, WHALE BEACH
 PROJECT No: 22077
 STAGE: Development Application
 DRAWING TITLE: NOTIFICATION PLANS
 CLIENT: P. HEYWORTH
 CHECKED: HHH
 DRAWN: KD
 APPROVED: SRH

DRAWING No: **NF 704**
 REVISION: **A**

NOT FOR CONSTRUCTION

173-175 WHALE BEACH RD, WHALE BEACH, NSW 22077. NOT FOR CONSTRUCTION. DATE: 01/05/2023. DRAWING NO: NF 704. REVISION: A.