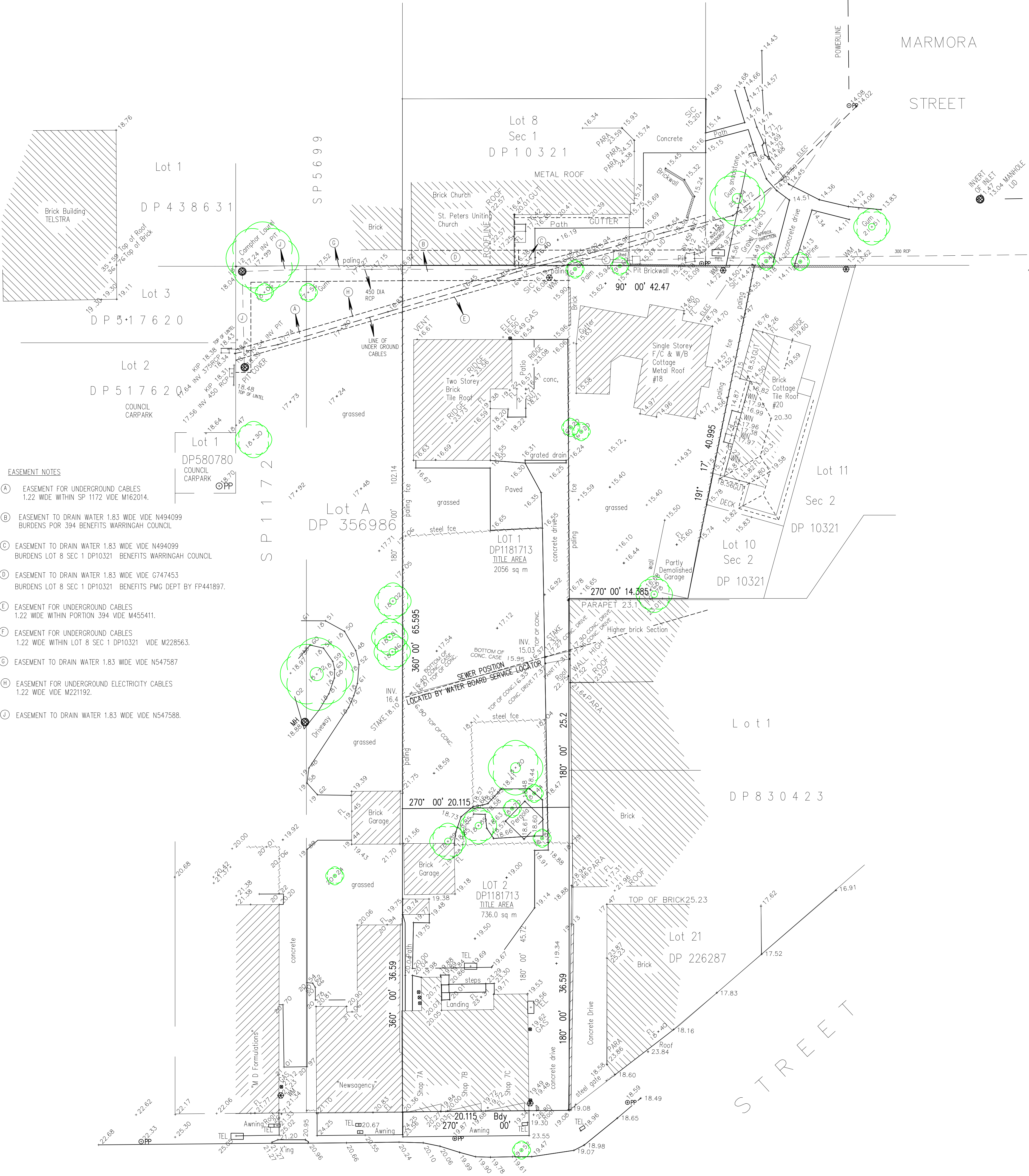
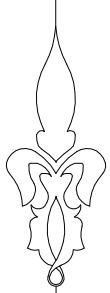


NUMBER OF COPIES



EASEMENT NOTES

- (A) EASEMENT FOR UNDERGROUND CABLES
1.22 WIDE WITHIN SP 1172 VIDE M162014.
- (B) EASEMENT TO DRAIN WATER 1.83 WIDE VIDE N494099
BURDENS POR 394 BENEFITS WARRINGAH COUNCIL
- (C) EASEMENT TO DRAIN WATER 1.83 WIDE VIDE N494099
BURDENS LOT 8 SEC 1 DP10321 BENEFITS WARRINGAH COUNCIL
- (D) EASEMENT TO DRAIN WATER 1.83 WIDE VIDE G747453
BURDENS LOT 8 SEC 1 DP10321 BENEFITS PMG DEPT BY FP441897.
- (E) EASEMENT FOR UNDERGROUND CABLES
1.22 WIDE WITHIN PORTION 394 VIDE M455411.
- (F) EASEMENT FOR UNDERGROUND CABLES
1.22 WIDE WITHIN LOT 8 SEC 1 DP10321 VIDE M228563.
- (G) EASEMENT TO DRAIN WATER 1.83 WIDE VIDE N547587
- (H) EASEMENT FOR UNDERGROUND ELECTRICITY CABLES
1.22 WIDE VIDE M221192.
- (I) EASEMENT TO DRAIN WATER 1.83 WIDE VIDE N547588.

NOTES:

- POSITION OF ALL IMPROVEMENTS RELATIVE TO BOUNDARIES
ARE SHOWN DIAGRAMMATICALLY ONLY.
- NO INVESTIGATION OF UNDERGROUND SERVICES HAS BEEN MADE.
(EXCEPT FOR INCASED SEWER LOCATION-AMENDMENT F).
- THE BEARINGS ON THIS PLAN ARE ON MAGNETIC NORTH.
- THE AUSTRALIAN HEIGHT DATUM IS ESTABLISHED FROM PM 2226
(HEIGHT 18.674 AHD). ACCURACY LEVEL 2.
- THE TREES ARE COMMON NAMES ONLY, WITH SPREAD & DIAMETER WHERE SHOWN AS ESTIMATED
VALUES ONLY & ACCURATE TO + OR - 1 METRE.
- TITLE DIMENSIONS ARE SHOWN ONLY AND ARE COMPILED FROM DP1181713 WHICH IS ON MGA.
- THE INFORMATION IN THIS PLAN IS ONLY TO BE USED AT A SCALE ACCURACY QUOTED ON PLAN.
- SEWER LOCATION APPROXIMATE ONLY THROUGH LOT 1 DP1181713
SITED FROM SEWER DIAGRAMS AT SCALE DISTANCES
ONLY SHOWN ON ORIGINAL SURVEY IN SERVICES LAYER.
- CONTACT DIAL BEFORE YOU DIG BEFORE ANY EXCAVATION ON OR
NEAR THIS SITE. DIAL BEFORE YOU DIG TELEPHONE NUMBER 1100.

F. LEVELS ON ENCASED SEWER LINE
& SUBDIVISION BODY ADDED 29TH APRIL 2015.

E. UNDERGROUND CABLES &
DRAINAGE LINE LOCATION ADDED 27TH FEB 2008

D. DRAINAGE PIT & PIPES IN STREET
& LAWRENCE ST ADDED 15TH NOVEMBER 2007.

C. EASEMENT DETAILS ADDED
9TH NOVEMBER 2007.

B. DRAIN DETAILS OVER CHURCH
AND ADJOINING LANDS & EASMENTS
ADDED 6TH NOVEMBER 2007.

A. #20 MARMORA & CHURCH
ADDED WITH PARAPETS
& SERVICES ON ALL BUILDINGS
& MANHOLES WITH INVERTS
AMENDED 10TH APRIL 2007.....

CONFIDENTIAL/COPYRIGHT
THIS PLAN REMAINS THE PROPERTY OF
KIPROVICH & ASSOCIATES PTY LTD.
IT IS SUBJECT TO COPYRIGHT AND MUST
NOT BE REPRODUCED IN PART OR WHOLE
WITHOUT PRIOR WRITTEN APPROVAL FROM
KIPROVICH & ASSOCIATES PTY LTD.

LEVEL DATUM	AHD
ORIGIN OF LEVELS	PM 2226
CO-ORD SYSTEM	ASSUMED
Origin of Co-Ords	STNI
Survey Azimuth	DP226287
Field Book	LAWJOB
Level Book	
Surveyed	RK & RM LATER PS.

KIPROVICH & ASSOCIATES PTY LTD 144 Anzac Avenue COLLARBY NSW 2097	ACN 080 101 042 ABN 20 080 101 042 Phone 0417 449 037 Fax 02 9982 8913
PLAN OF DETAILS ON AHD OVER LOTS 1 & 2 DP 1181713 1 BEING 5-7 LAWRENCE ST & 18 MARMORA ST FRESHWATER.	PARISH: MANLY COVE COUNTY: CUMBERLAND L.G.A.: WARRINGAH CLIENT: MOORGATE PROPERTY.

PLAN No. 07_113AAA	AI@ SCALE 1:250
Date 29th APRIL 2015	
Sheet No.	No. of Sheets
ONE	ONE