

DP 1136357

DP 1220196

Proposed Bounce Signage locations

DP 28664

SITE BOUNDARY (AS PER DA)

PROPOSED NEW SITE BOUNDARY

TEMPERATE SOUTH  
EASTERLY BREEZE

BUILDING 2

1

DP 1220196

FUTURE  
DEVELOPMENT  
APPLICATION

SITE BOUNDARY

NORTH

BUILDING 1

2

EXISTING BUILDING

3

WINTER SUN

SITE BOUNDARY

4

SOUTH CREEK ROAD

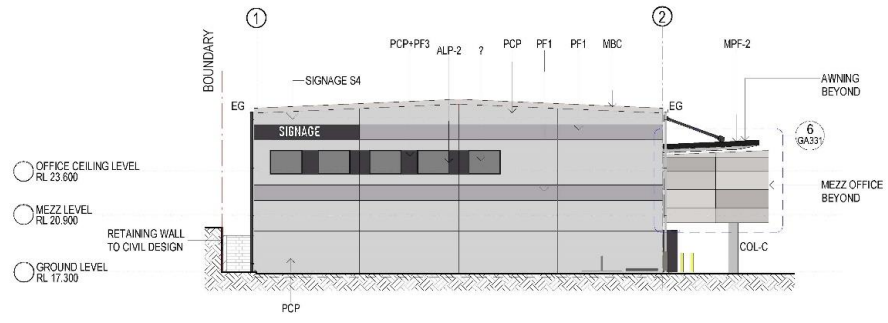
INMAN ROAD

SUMMER SUN

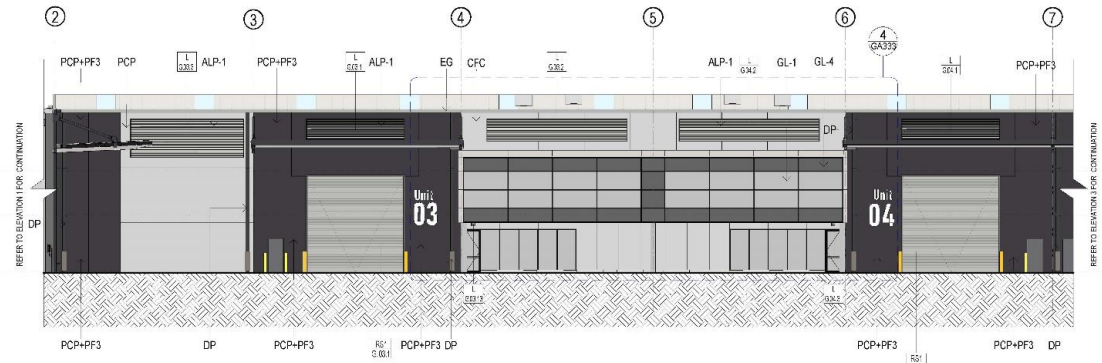
SOUTH WESTERLY  
WINTER WINDS

Pylon Sign

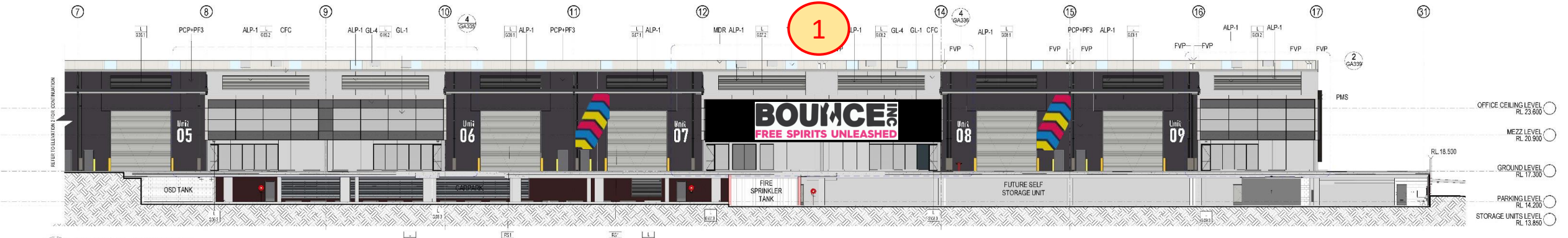




1 WEST ELEVATION UNIT 01  
1:200

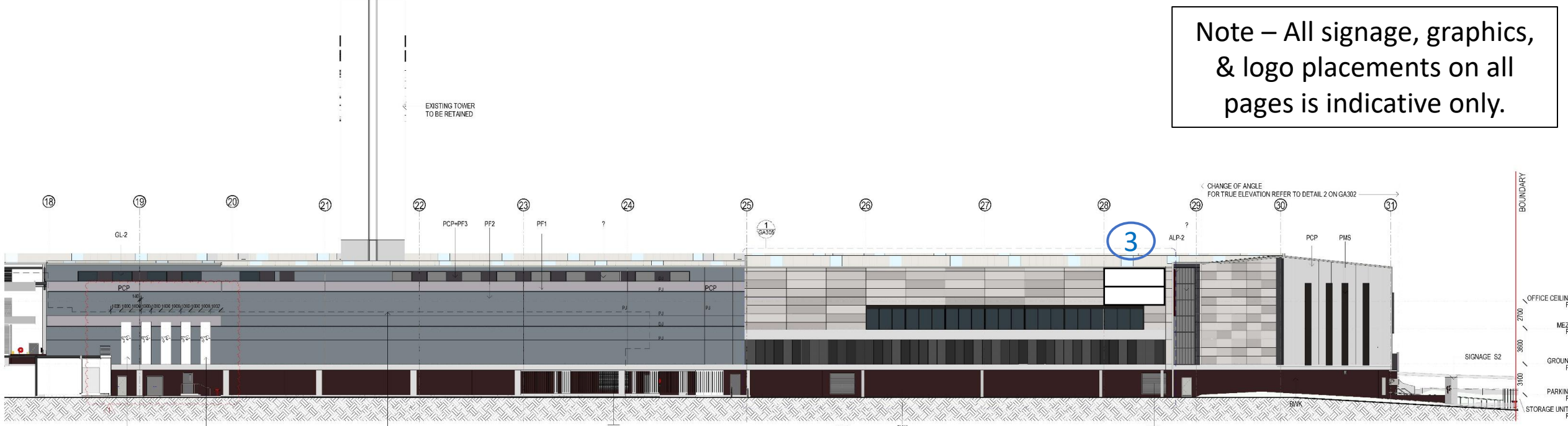


2 WEST ELEVATION UNITS 03-04  
1:200



3 WEST ELEVATION UNITS 05-09  
1:200

Note – All signage, graphics, & logo placements on all pages is indicative only.



4 WEST ELEVATION UNITS 10-11  
1:200

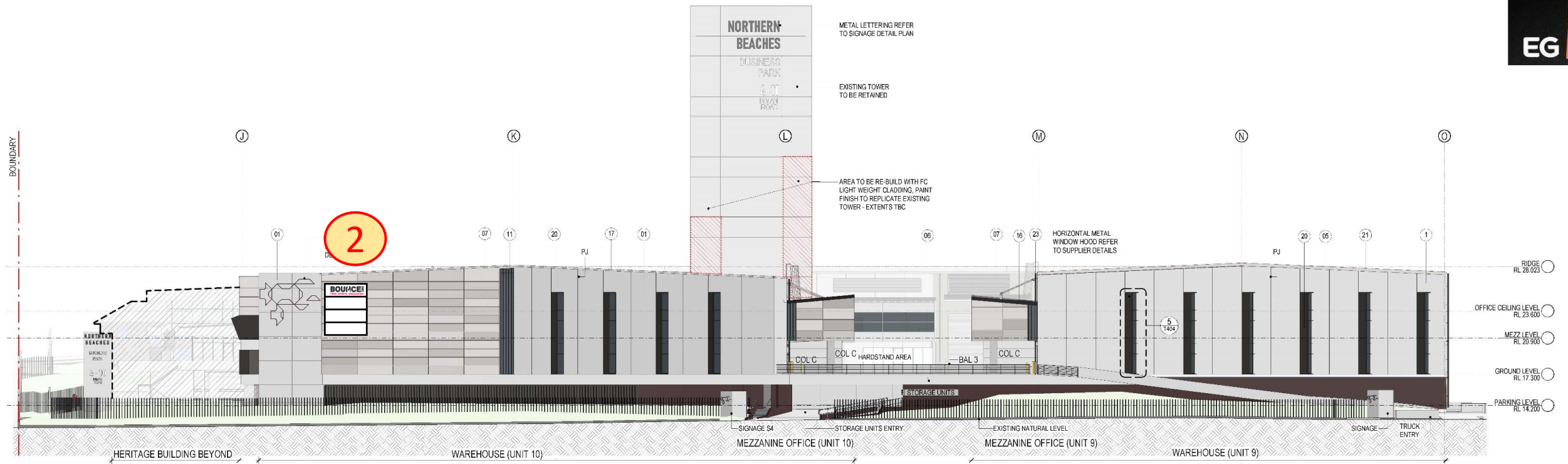
(#3 Not for Bounce, but suggestion for future users.)

PRELIMINARY

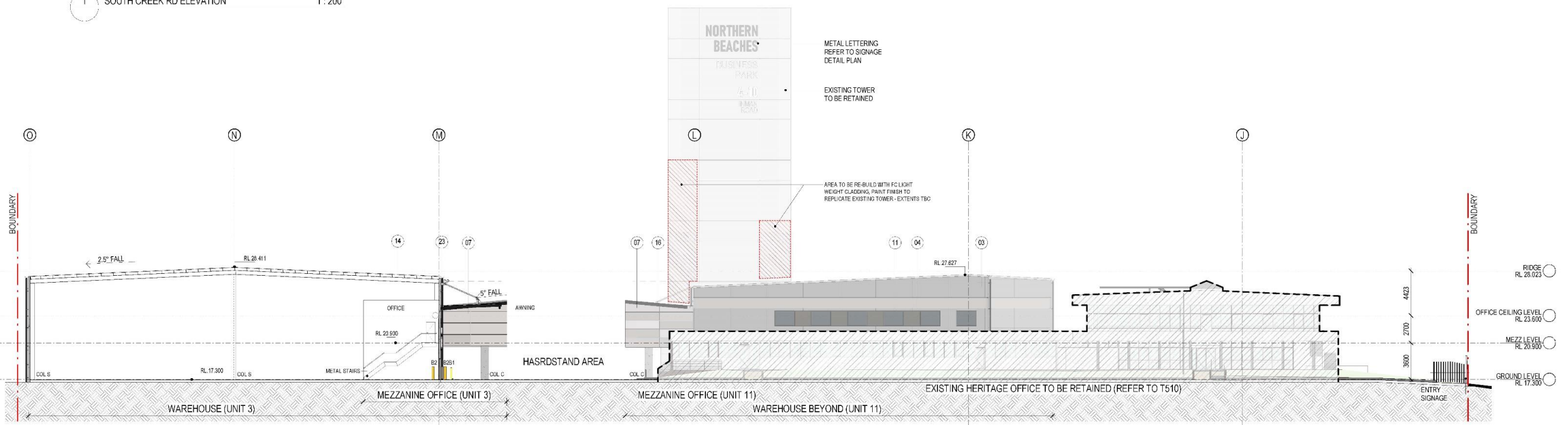
18	ISSUED FOR INFORMATION	24/05/2022	PLEASE BE AWARE - THIS IS A PRELIMINARY DRAWING AND IS NOT FOR CONSTRUCTION. IT IS SUBJECT TO CHANGE WITHOUT NOTICE. ANY DIMENSIONS TO BE USED IN PREFERENCE TO THIS DRAWING SHOULD BE VERIFIED ON SITE.
19	1. Has tags prepared as amended	08/03/2022	
20	PRELIMINARY ISSUE	18/02/2022	
21	PRELIMINARY - FOR PRELIMINARY PACKAGE ONLY	29/11/2021	
22	PRELIMINARY FOR COORDINATION - General notes, re-detailed	14/02/2021	
23	PRELIMINARY FOR COORDINATION	29/09/2020	
24	ISSUED FOR CONSTRUCTION	01/02/2020	
25	DESCRIPTION	01/02/2020	

CLIENT	B.L.C.E.R.	DATE	24/05/2022	PROJECT NO.	21178
		SCALE	1:200 @ A1		
		DRAWN	Author	DWG NO.	
		CHECKED	Checker	REVISION	
		APPROVED	Approver	GA301	P6

NORTHERN BEACHES BUSINESS PARK  
 4-10 MINNHAM ROAD, CROMER  
 TITLE: WAREHOUSE ELEVATIONS - SHEET 1  
 DATE: 24/05/2022  
 SCALE: 1:200 @ A1  
 DRAWN: Author  
 CHECKED: Checker  
 APPROVED: Approver  
 PROJECT NO.: 21178  
 DWG NO.:  
 REVISION: GA301 P6  
 20/05/2022 12:35:01 PM



1 SOUTH CREEK RD ELEVATION 1:200



4 NORTH ELEVATION / SECTION 1:200

**Indicative External Finishes Legends**

- |  |  |   |  |
|--|--|---|--|
| 01 PCP_Precast Concrete Panel. Natural Finish with expressed joints              | 07 ALC-1_Solid Aluminium Cladding - Mondoclad - three different light greys finishes: Silver Metallic - Champagne - Silver Grey Metallic. Installed colour distribution randomly with expressed joints | 12 CFC_ Compress Fibre Cement Sheet to Match Concrete Finish. Type Cemintel or similar. | 19 GSP_Color Back Gloss - Spandrel                                       |
| 02 PCP-1_Precast Concrete Panel. Paint Finish 01 with expressed joints           | 08 ALC-2_Solid Aluminium Cladding - Mondoclad - three different dark greys: Mouse Grey - Anthracite Grey - Charcoal. Installed colour distribution randomly with expressed joints                      | 13 ALP-2_Vertical Louvre - aluminium batens powdercoated dark grey                      | 20 PMS_Powdercoated Metal Solar Control Window Hood (Heka Supplier -TBC) |
| 03 PCP-2_Precast Concrete Panel. Paint Finish 02 with expressed joints           | 09 ALP-1_Metal Louvre / Screen. Powdercoated Black Finish on Carpark   | 14 MDR_Metal Deck Roofing-Prefinished Colorbond Surfmist                                | 21 MPF-1_Metal Powdercoated Fascia Light Grey paint finish               |
| 04 PCP-3_Precast Concrete Panel. Paint Finish 03 with expressed joints           | 10 FNC-1_Palisade / Diplomat Fencing. Powdercoated Finish  | 15 TRS_Profined Traslucet Roofing Sheet   | 22 MPF-2_Metal Powdercoated Fascia Dark Grey paint finish                |
| 05 BWK_Brick Wall to Match Heritage Building Brick Walls                         | 11 PAW_Powdercoated Aluminium Windows Frames with Tone Glazing   | 16 EG-1_Eaves Gutter Dark Grey paint finish   | 23 DP_Downpipes Dark Grey paint finish                                   |
| 06 FC_Fibre Cement Sheet, Paint Finish to Match Heritage Building FC Sheet Beams |  | 17 EG-2_Eaves Gutter Light Grey paint finish  | 24 MVL_Metal Ventilation Louvres   |

**NORTHERN BEACHES BUSINESS PARK**

4-10 INMAN ROAD, CROMER

THESE DESIGN PLANS & SPECIFICATIONS ARE THE COPYRIGHT PROPERTY OF EG ARCHITECTS PTY LTD. NO PART OF THIS DOCUMENT IS TO BE REPRODUCED OR TRANSMITTED IN ANY FORM OR BY ANY MEANS WITHOUT THE WRITTEN PERMISSION OF THIS OFFICE.

EG ARCHITECTS PTY LTD. 4/4-10 INMAN ROAD, CROMER NSW 2811. PHONE: 02 9439 1111. FAX: 02 9439 1112. WWW.EGARCHITECTS.COM.AU

**ELEVATIONS 2**

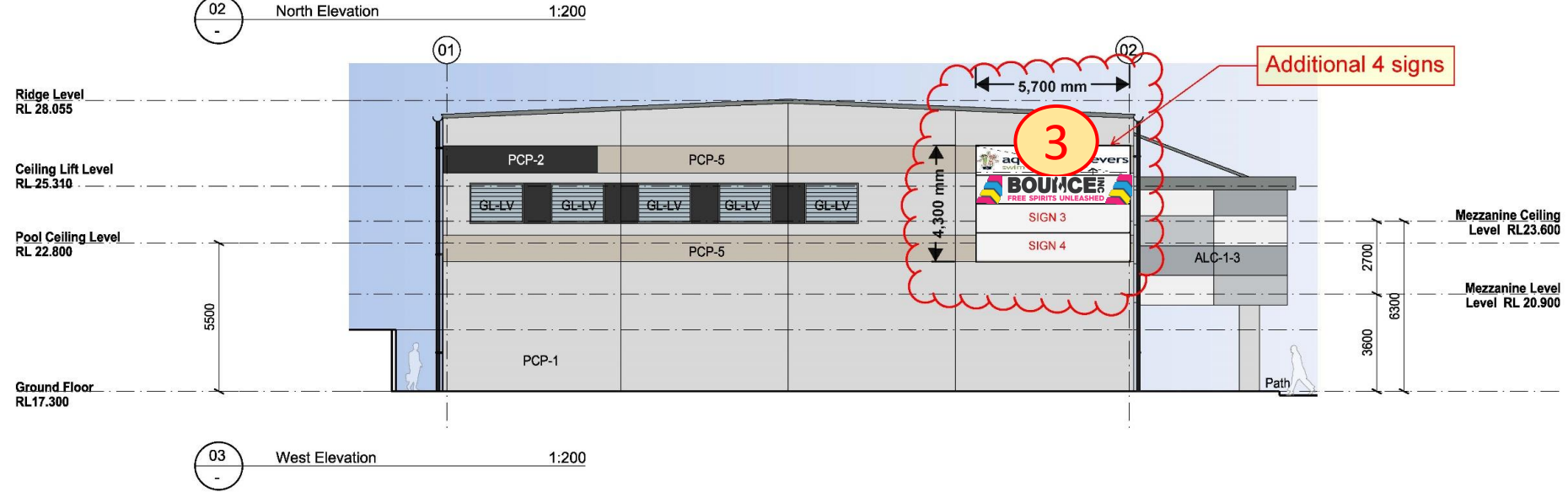
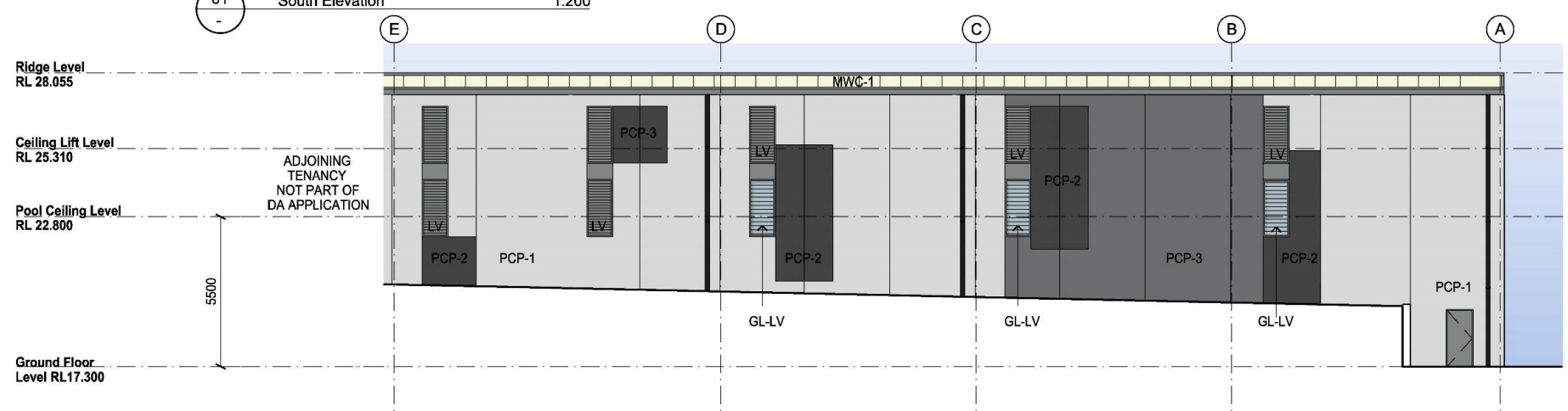
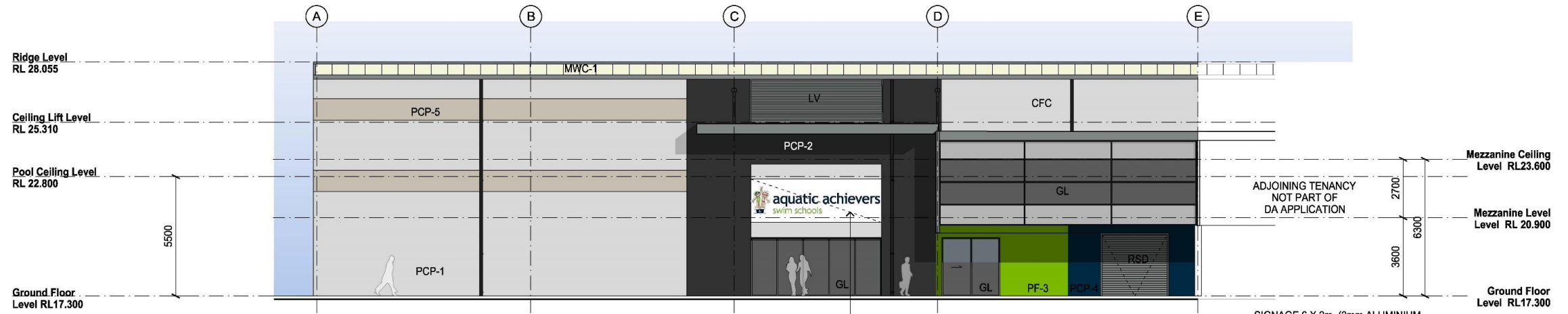
DATE	SCALE	PROJECT NO.	DWG NO.	REVISION
09/12/2020	1:200 @ A1	19110	T212	B

8 ISSUE FOR TENDER 26/10/2020  
 9 ISSUE FOR TENDER 25/11/2020  
 2 ISSUE FOR INFORMATION 15/11/2020  
 1 PRELIMINARY ISSUE FOR CONSULTANTS' DESCRIPTION 23/06/2020  
 DATE



### Indicative External Finishes Legend

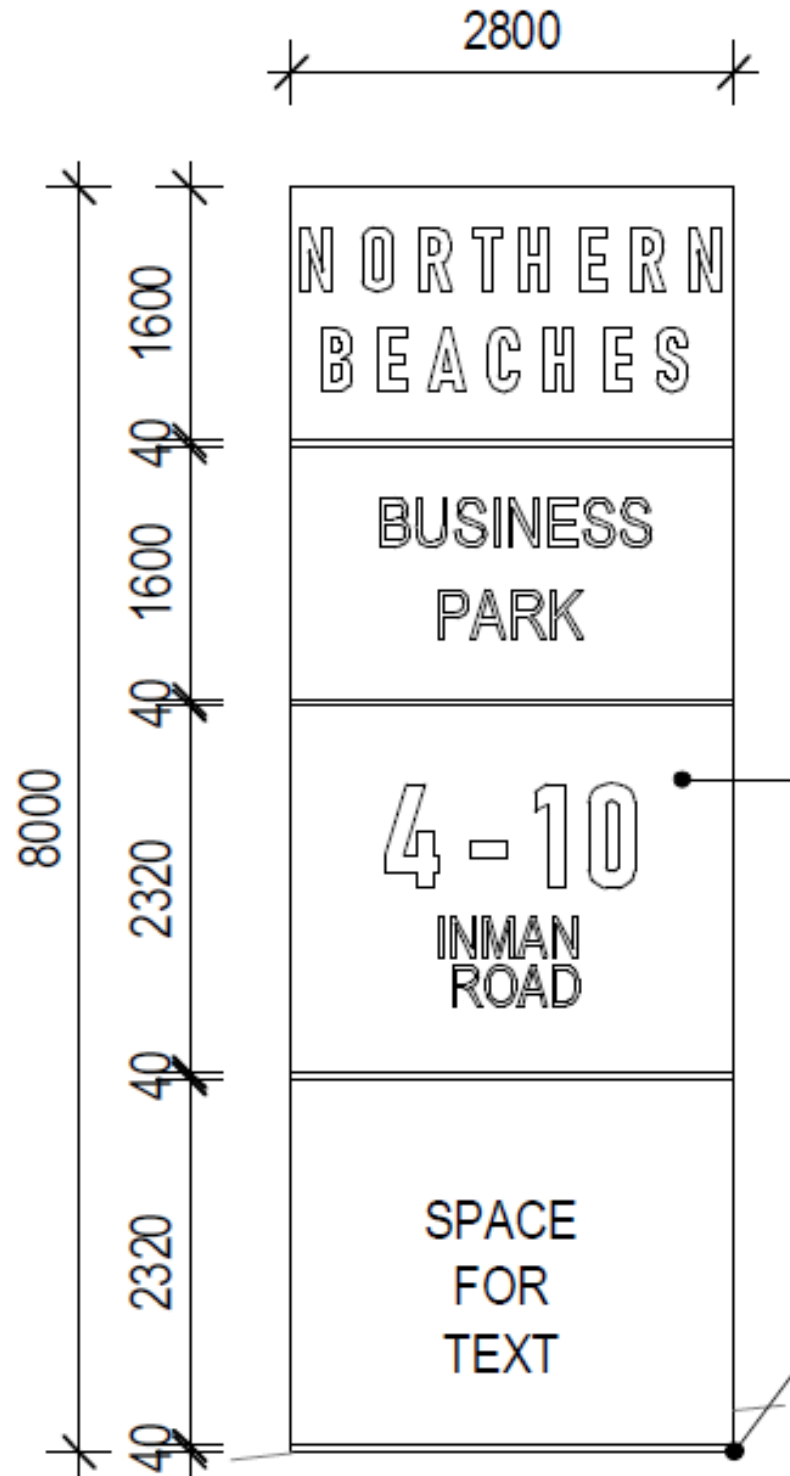
- PCP-1  
Precast Concrete Panel - Natural Finish
- PCP-2  
Precast Concrete Panel - Paint Finish Monument
- PCP-3  
Precast Concrete Panel - Paint Finish - Dark Grey
- PCP-4  
Precast Concrete Panel - Paint Finish "Aquatic Achievers Blue"
- PCP-5  
Precast Concrete Panel - Paint Finish
- CFC  
Compressed Fiber Cement - Concrete Texture
- MWC-1  
Metal Profile Cladding - Colorbond Surfmist
- ALC-1  
Aluminium Cladding - Silver Metallic
- ALC-2  
Aluminium Cladding - Silver Grey Metallic
- ALC-3  
Aluminium Cladding - Champagne
- RSD  
Roller Shutter Door
- LV  
Powdercoat Louver - Windspray
- GL  
Glazing
- GL-LV  
Glazed Louver
- PF-3  
Paint Finish "Aquatic Achievers Green"



**THIS PLAN IS TO BE READ IN CONJUNCTION WITH THE CONDITIONS OF DEVELOPMENT CONSENT**  
**DA2021/2608**

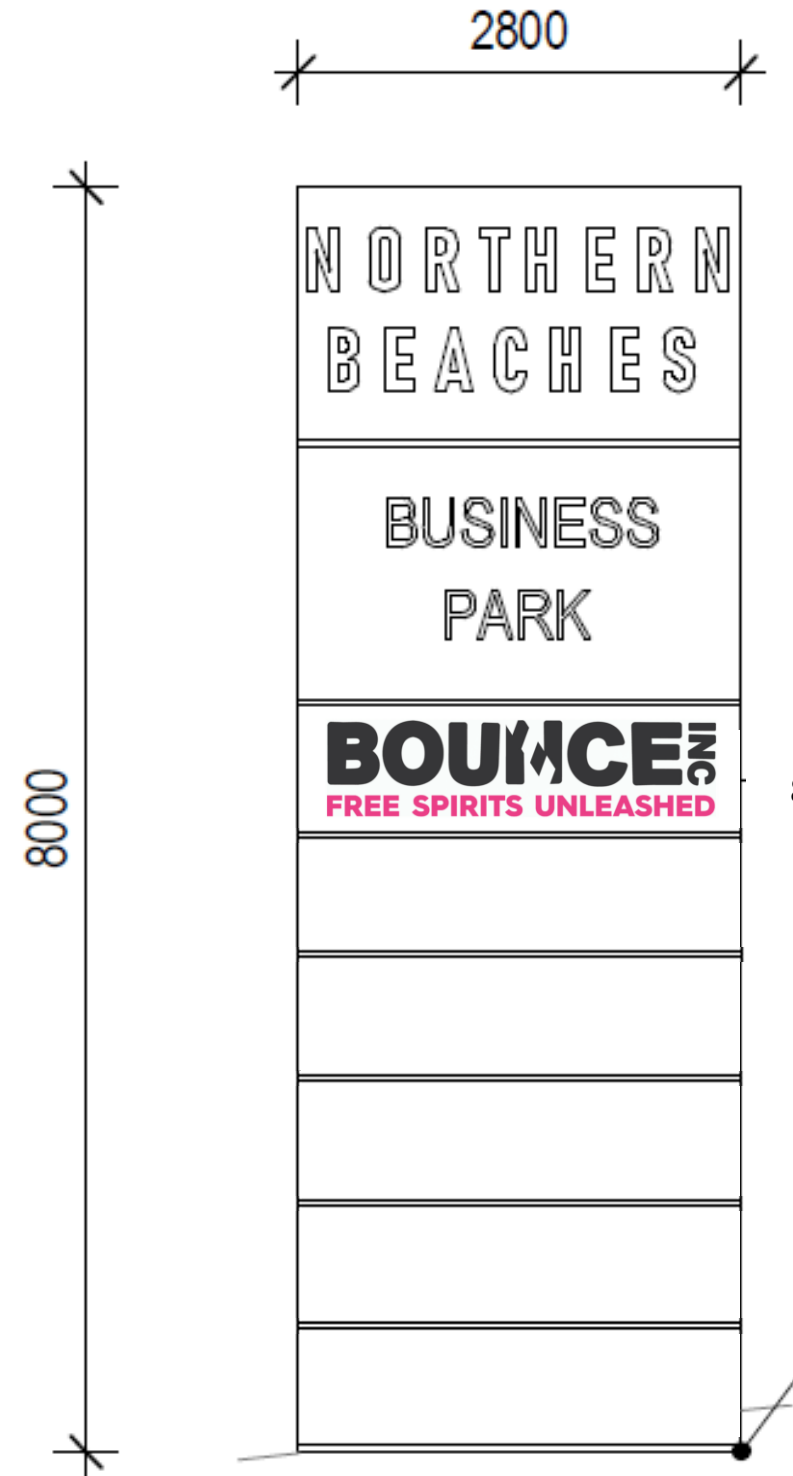
Indicative Pylon idea to increase all Tenant representation

4



Current Pylon proposal

JAGE ELEVATION 1



Panel approx 850mm x 2800mm

Final Pylon layout & position TBC

JAGE ELEVATION 1