

## GENERAL

## FOUNDATIONS

## EXCAVATIONS

## CONCRETE

## REINFORCEMENT

## MASONRY

## STEEL

## TIMBER

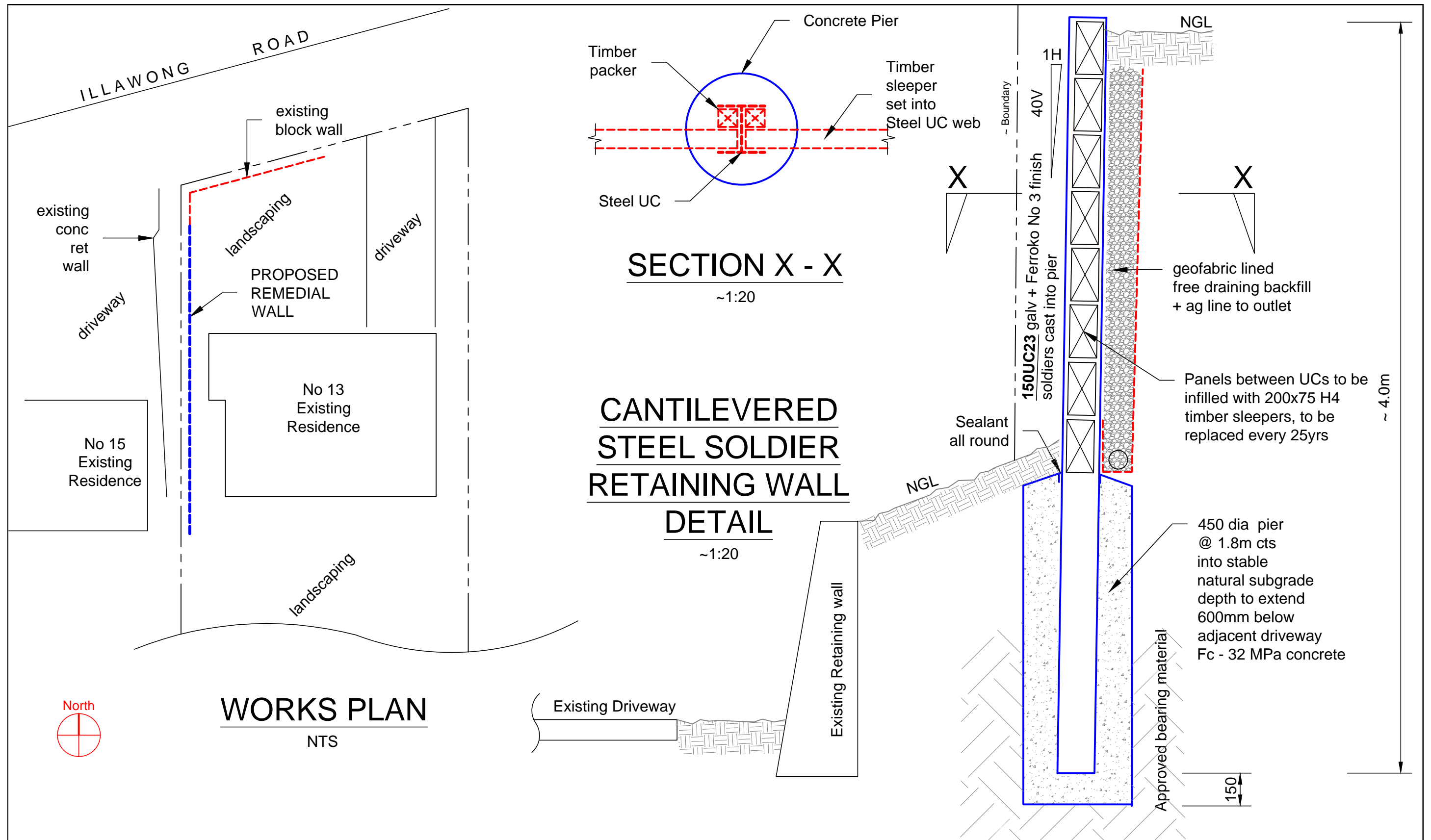
## INSPECTIONS

# DRAWING SCHEDULE

## S1.00 - GENERAL NOTES

## S2.00 - WALL DETAIL

<p>Barrenjoey Consulting Engineers <small>pty ltd</small></p> <p>Stormwater                      Structural                      Civil</p> <p>PO Box 672</p> <p>Avalon NSW 2107</p> <p>M: 0418 620 330</p> <p>E: lucasbce@bigpond.com</p> <p>ABN: 13124694917</p> <p>ACN: 124694917</p>	<p><b>PROJECT:</b></p> <p><b>PROPOSED RETAINING WALL</b></p> <p><b>REMEDIAL WORKS</b></p> <p><b>13 IRRAWONG RD</b></p> <p><b>NTH NARRABEEN</b></p>	<p><b>DRAWING :</b></p> <p><b>GENERAL NOTES</b></p>	<p>Job No :</p> <p><b>201202</b></p>	<p>Drawing No :</p> <p><b>S1.00</b></p>
			<p>Document Certification</p> <p>Barrenjoey Consulting Engineers <small>pty ltd</small></p> <p>per</p> <p>Lucas Molloy <small>MIEA CPEng NER Director</small></p>	



Barrenjoey Consulting Engineers ptg ltd  
Stormwater Structural Civil  
PO Box 672  
Avalon NSW 2107  
M: 0418 620 330  
E: lucasbce@bigpond.com  
ABN: 13124694917  
ACN: 124694917

PROJECT:

PROPOSED RETAINING WALL  
REMEDIAL WORKS  
13 IRRAWONG RD  
NTH NARRABEEN

DRAWING :

WALL DETAIL

Job No :

201202

Drawing No :

S2.00

Document Certification

Barrenjoey Consulting Engineers ptg ltd  
per  
Lucas Molloy MIEA CPEng NER Director