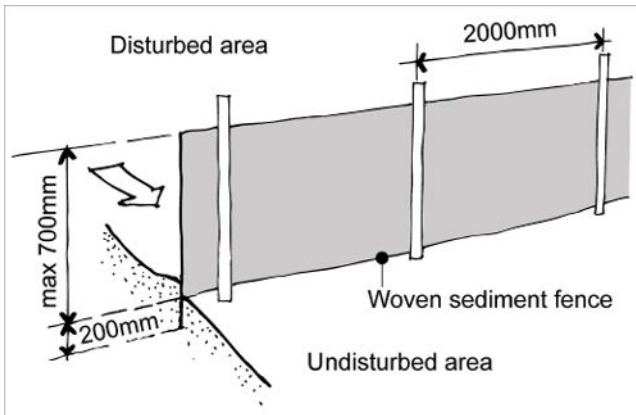


Legend

- MULCH AREA
- TURF AREA
- TIMBER DECKING
- CONCRETE PAVING
- UNIT PAVING
- STAIRS
- PEBBLE
- GRAVEL
- COBBLESTONE
- TIMBER
- WATER
- MASONRY RETAINING WALL
- STONE RETAINING WALL
- TIMBER RETAINING WALL
- BOULDER RETAINING WALL
- SITE OR WORKS BOUNDARY
- PROPOSED LEVEL
- TOP OF WALL LEVEL
- MATERIAL NAME
- SURFACE FALL DIRECTION
- SURFACE DRAINS
- SURVEY (50% GREY LINES)
- EXISTING TREE TO RETAIN
- EXISTING TREE TO REMOVE
- EXISTING ROCK OUTCROP

AREA CALCULATION		
	AREA (m2)	PERCENTAGE
Site	237,3	
Total Open Space	94,22	39,71%
Proposed Landscape Area	52,8	56,04%



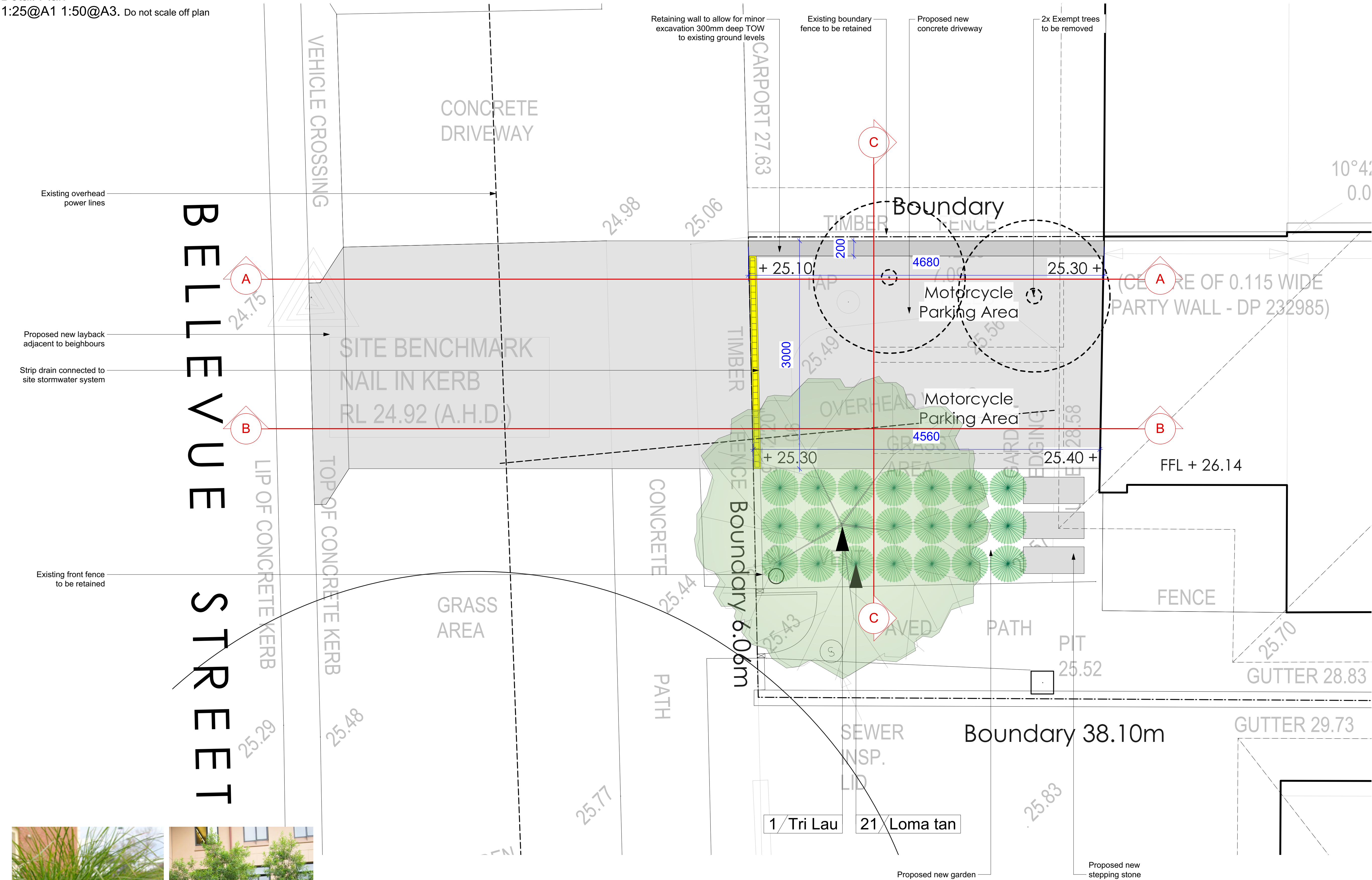
Sedimentation Control Fence
Not to scale.
Source: www.yourhome.gov.au



JAMIE KING
LANDSCAPE ARCHITECT
DESIGN ● APPROVE ● MANAGE

B A	24/02/23 14/02/23	Issue B for DA. DRAFT issue for review.
PROJECT	40 Bellevue Street, Fairlight	PROJECT # 23062
CLIENT	Tom Rudd	DATE # See above
DWG	Master Landscape Plan	SCALE @ A1 See Plan
CHKD	JK	DWG # Sht-101
Jamie King Landscape Architect 22 Coonanga Road, Avalon, NSW, 2107		REVISION
W: www.jamieking.com.au E: jamie@jamieking.com.au		

Notes:
>Do not scale off plan.
>Contractors to check all measurements onsite before quoting or commencing work.
>If abnormalities arise, contact the Landscape Architect.
>This design is copyright and is not to be reproduced in anyway without written consent of Jamie King Landscape Architect.

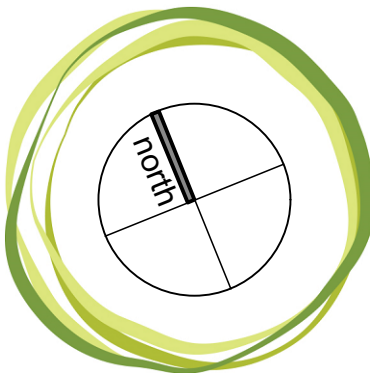


LOMANDRA TANIKA



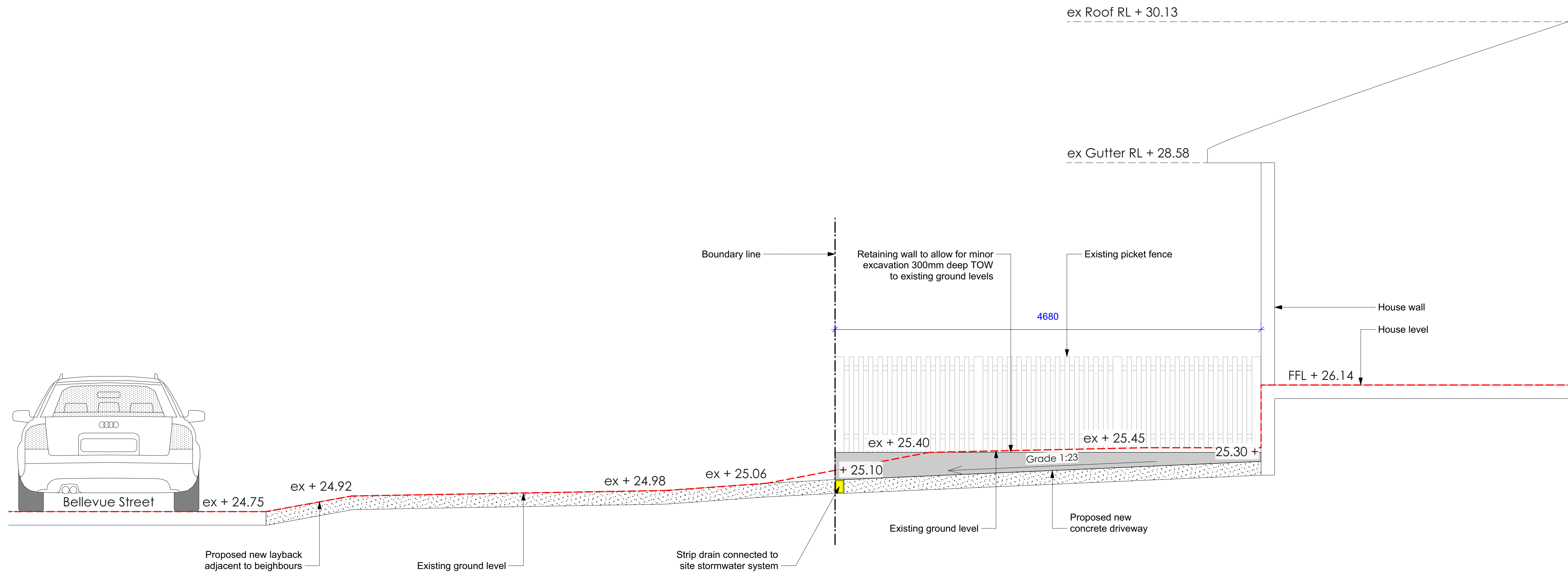
TRISTANIOPSIS

ID	Quantity	Latin Name	Common Name	Scheduled Size	Mature Height	Mature Spread
2	22			2	2	2
Loma tan	21	Lomandra longifolia 'Tanika'	Spiny-headed mat rush	150mm	0.45 - 0.6m	0.6 - 0.9m
Tri Lau	1	Tristaniopsis laurina 'Luscious'	Kanooka, Water Gum	45lt	12 - 15m	3.5 - 6m

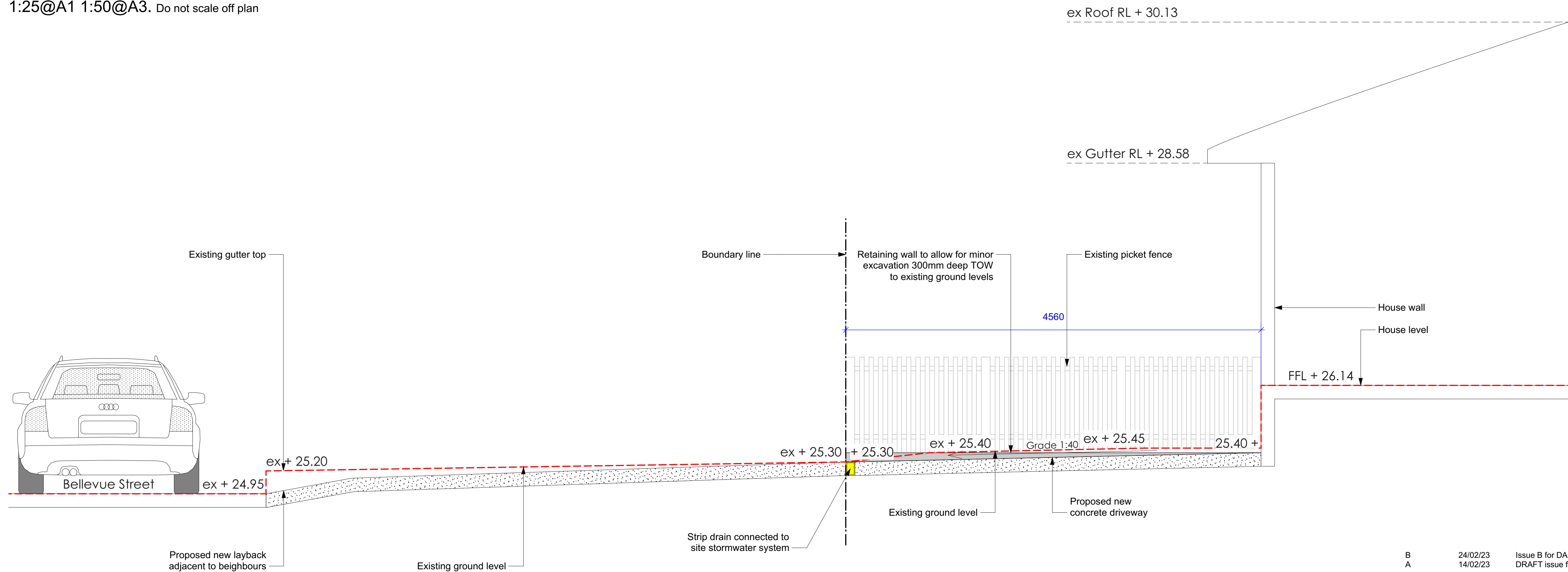


JAMIE KING
LANDSCAPE ARCHITECT
DESIGN ● APPROVE ● MANAGE

PROJECT	DATE	REVISION	PROJECT #
40 Bellevue Street, Fairlight	24/02/23	Issue B for DA.	23062
CLIENT	DATE #	See above	DWG #
Tom Rudd	SCALE @ A1	See Plan	Sht-102
DWG	DRAWN	SA	CHKD
Detail Plan	JK	REVISION	
Jamie King Landscape Architect		W: www.jamieking.com.au	
22 Coonanga Road, Avalon, NSW, 2107		T: 0421 517 991	
		E: jamie@jamieking.com.au	



Section AA
1:25@A1 1:50@A3. Do not scale off plan



Section BB
1:25@A1 1:50@A3. Do not scale off plan



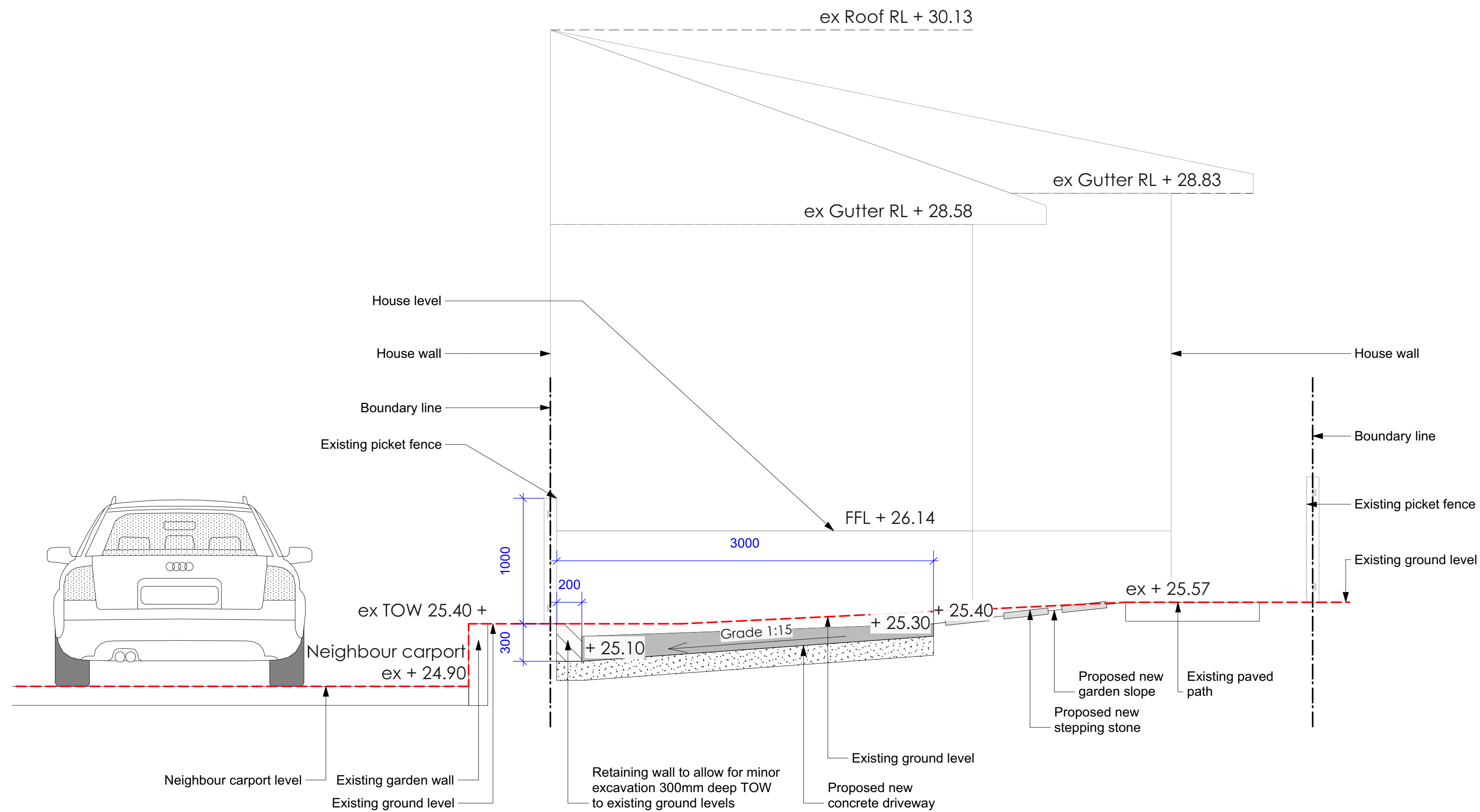
JAMIE KING
LANDSCAPE ARCHITECT
DESIGN • APPROVE • MANAGE

B	24/02/23	Issue B for DA.		
A	14/02/23	DRAFT issue for review.		
PROJECT	40 Bellevue Street, Fairlight			PROJECT # 23062
CLIENT	Tom Rudd			DATE # See above DWG #
DWG	Sections			SCALE @ A1 See Plan
CHKD	JK			DRAWN SA
			REVISION	

Jamie King Landscape Architect
22 Coonanga Road, Avalon, NSW, 2107
W: www.jamieking.com.au
T: 0421 517 991
E: jamie@jamieking.com.au

Notes:
>Do not scale off plan.
>Contractors to check all measurements onsite before quoting or commencing work.
>If abnormalities arise, contact the Landscape Architect.
>This design is copyright and is not to be reproduced in anyway without written consent of Jamie King Landscape Architect.

Sht-103



Section CC
1:25@A1 1:50@A3. Do not scale off plan

Notes:
>Do not scale off plan.
>Contractors to check all measurements onsite before quoting or commencing work.
>If abnormalities arise, contact the Landscape Architect.
>This design is copyright and is not to be reproduced in anyway without written consent of Jamie King Landscape Architect.

B	24/02/23	Issue B for DA.
A	14/02/23	DRAFT issue for review.

ISSUE	DATE	REVISION
PROJECT	40 Bellevue Street, Fairlight	
CLIENT	Tom Rudd	
DWG	Sections	
PROJECT #	23062	
DATE #	See above	DWG #
SCALE @ A1	See Plan	Sht-104
DRAWN	SA	
CHKD	JK	REVISION

Jamie King Landscape Architect
22 Coonanga Road, Avalon, NSW, 2107
W: www.jamieking.com.au
T: 0421 517 991
E: jamie@jamieking.com.au



JAMIE KING
LANDSCAPE ARCHITECT
DESIGN • APPROVE • MANAGE