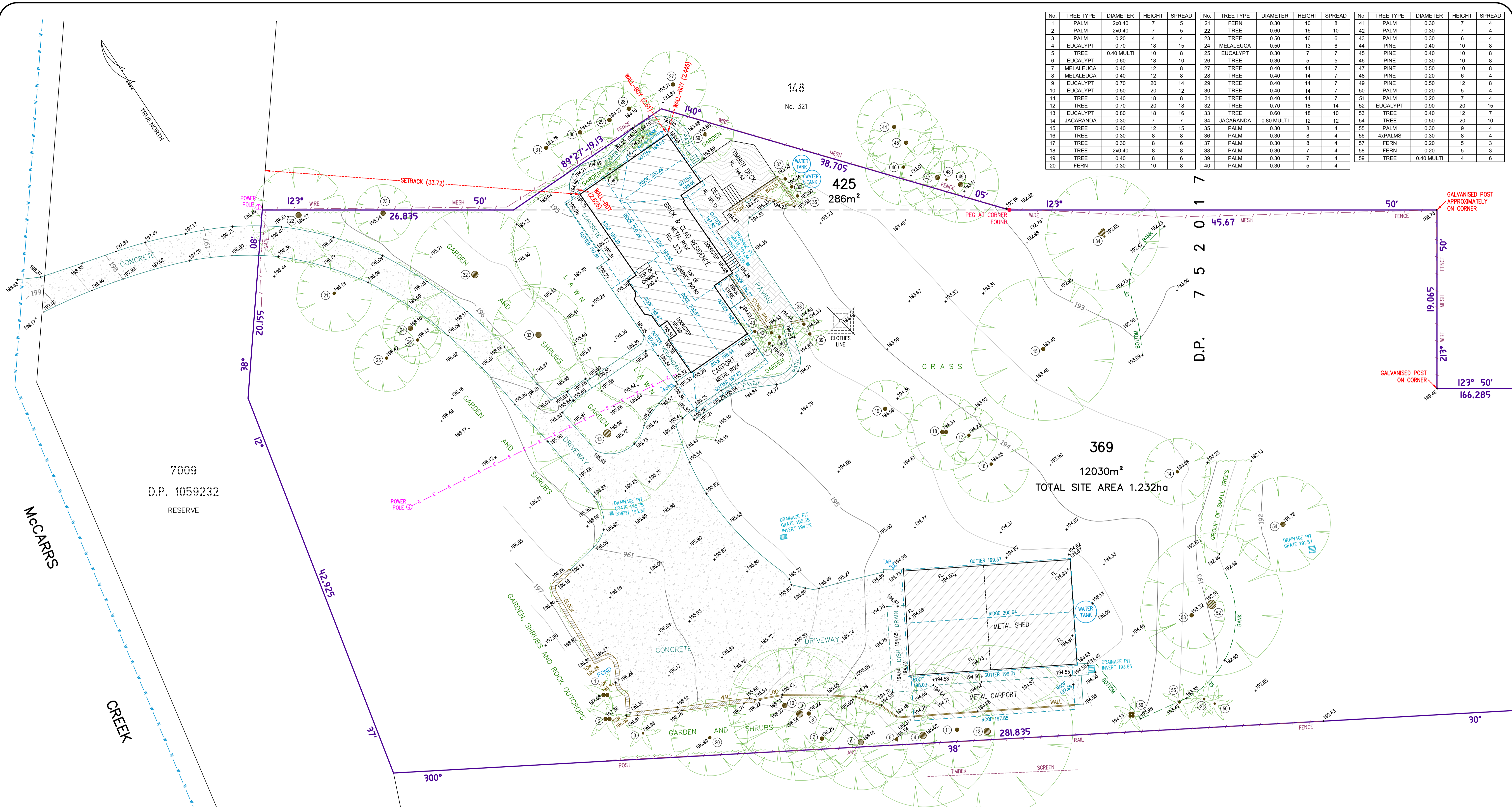


No.	TREE TYPE	DIAMETER	HEIGHT	SPREAD	No.	TREE TYPE	DIAMETER	HEIGHT	SPREAD	No.	TREE TYPE	DIAMETER	HEIGHT	SPREAD
1	PALM	2x0.40	7	5	21	FERN	0.30	10	8	41	PALM	0.30	7	4
2	PALM	2x0.40	7	5	22	TREE	0.60	16	10	42	PALM	0.30	7	4
3	PALM	0.20	4	4	23	TREE	0.50	16	6	43	PALM	0.30	6	4
4	EUCALYPT	0.70	18	15	24	MELALEUCA	0.50	13	6	44	PINE	0.40	10	8
5	TREE	0.40 MULTI	10	8	25	EUCALYPT	0.30	7	7	45	PINE	0.40	10	8
6	EUCALYPT	0.60	18	10	26	TREE	0.30	5	5	46	PINE	0.30	10	8
7	MELALEUCA	0.40	12	8	27	TREE	0.40	14	7	47	PINE	0.50	10	8
8	MELALEUCA	0.40	12	8	28	TREE	0.40	14	7	48	PINE	0.20	6	4
9	EUCALYPT	0.70	20	14	29	TREE	0.40	14	7	49	PINE	0.50	12	8
10	EUCALYPT	0.50	20	12	30	TREE	0.40	14	7	50	PALM	0.20	5	4
11	TREE	0.40	18	8	31	TREE	0.40	14	7	51	PALM	0.20	7	4
12	TREE	0.70	20	18	32	TREE	0.70	18	14	52	EUCALYPT	0.90	20	15
13	EUCALYPT	0.80	18	16	33	TREE	0.60	18	10	53	TREE	0.40	12	7
14	JACARANDA	0.30	7	7	34	JACARANDA	0.80 MULTI	12	12	54	TREE	0.50	20	10
15	TREE	0.40	12	15	35	PALM	0.30	8	4	55	PALM	0.30	9	4
16	TREE	0.30	8	8	36	PALM	0.30	8	4	56	4xPALMS	0.30	8	4
17	TREE	0.30	8	6	37	PALM	0.30	8	4	57	FERN	0.20	5	3
18	TREE	2x0.40	8	8	38	PALM	0.30	7	4	58	FERN	0.20	5	3
19	TREE	0.40	8	6	39	PALM	0.30	7	4	59	TREE	0.40 MULTI	4	6
20	FERN	0.30	10	8	40	PALM	0.30	5	4					



- NOTES:**
- CAUTION: SHOULD ANY DEVELOPMENT OR CONSTRUCTION BE PLANNED ON OR NEAR THE BOUNDARIES, THE BOUNDARIES SHOULD BE CLEARLY MARKED ON SITE.
  - A FIELD SURVEY OF THE BOUNDARIES HAS BEEN CONDUCTED. AREA AND DIMENSIONS HAVE BEEN SURVEYED FROM PLANS MADE AVAILABLE AT LAND REGISTRY SERVICES.
  - ORIGIN OF LEVELS ON A.H.D. IS TAKEN FROM S.S.M. 35450 RL 201.465 A.H.D.
  - TREE SPREADS ARE DIAGMATIC ONLY AND ARE NOT SYMMETRICAL.
  - UNDERGROUND (NON VISIBLE) SERVICE LINES HAVE BEEN SHOWN FROM "DIAL BEFORE YOU DIG" SERVICE AUTHORITY RECORDS & ARE DIAGMATIC ONLY IN REGARD TO THEIR POSITION & WIDTH UNLESS STATED OTHERWISE.
  - BEARINGS SHOWN ARE ON TRUE NORTH.
  - CONTOUR INTERVAL 0.5 METRE.
  - CONTOURS ARE INDICATIVE OF GROUND FORM ONLY. ONLY SPOT LEVELS SHOULD BE USED FOR CALCULATIONS OF QUANTITIES WITH CAUTION.

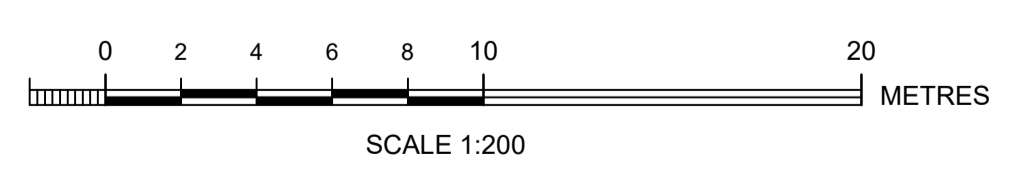
INVESTIGATION OF "DIAL BEFORE YOU DIG" UNDERGROUND SERVICES HAS BEEN MADE. DETECTION OF UNDERGROUND SERVICES IS NOT AN INTEGRAL PART OF THIS SURVEY. ALL RELEVANT AUTHORITIES SHOULD BE NOTIFIED PRIOR TO ANY EXCAVATION ON OR NEAR THE SITE.

DEVELOPERS & EXCAVATORS MAY BE HELD FINANCIALLY RESPONSIBLE BY THE ASSET OWNER SHOULD THEY DAMAGE UNDERGROUND NETWORKS.

CARELESS DIGGING CAN:

- CAUSE DEATH OR SERIOUS INJURY TO WORKERS AND THE GENERAL PUBLIC
- INCONVENIENCE USERS OF ELECTRICITY, GAS, WATER AND COMMUNICATIONS
- LEAD TO CRIMINAL PROSECUTION AND DAMAGES CLAIMS
- CAUSE EXPENSIVE FINANCIAL LOSSES TO BUSINESS
- CUT OFF EMERGENCY SERVICES
- DELAY PROJECT COMPLETION TIMES WHILE THE DAMAGE IS REPAIRED

MINIMISE YOUR RISK AND DIAL BEFORE YOU DIG.  
TEL: 1100



**Bee & Lethbridge**  
Quality Surveying & Development Solutions

Bee & Lethbridge Pty Ltd  
Suite 2, 14 Starkey Street,  
PO Box 330, Forestville, NSW 2087  
Phone: 9451 6757  
Email: survey@beeeth.com.au  
ABN: 13 003 194 447  
www.beeeth.com.au

**LEGEND**

- TREE & POINT NUMBER (SEE TABLE)
- GUTTER TOW DENOTES TOP OF GUTTER
- WATER LINES DENOTES TOP OF WALL

*Copland C. Lethbridge*  
COPLAND C. LETHBRIDGE  
REGISTERED SURVEYOR N.S.W.  
IDENTIFICATION No. SU001470

PLAN SHOWING BOUNDARIES, RELATIVE HEIGHTS & PHYSICAL FEATURES OVER PART OF LOT 369 & LOT 425 IN D.P. 752017 KNOWN AS No. 323 McCARRS CREEK ROAD, TERREY HILLS.

L.G.A.: NORTHERN BEACHES

CLIENT	SKUNSH PTY LTD	REF No.	22049
PROPERTY	No. 323 McCARRS CREEK ROAD, TERREY HILLS	SHEET No.	1 of 1
DATUM	A.H.D.	SCALE	1:200 @ A1
SURVEYED	C.L./S.S.	DATE	08/04/2021
		DWG No.	22049
		REV No.	00