

LEGEND

(O)	DENOTES PIPE OVER
(U)	DENOTES PIPE UNDER
DP1	150mm Ø uPVC DOWNPIPE DIRECT TO OSD 2 AT MIN 1% FALL
DP2	90mm Ø DOWNPIPE DIRECT TO OSD 1 VIA A CHARGED LINE
X FFL 173.90	FFL AND/OR SPOT LEVEL REFER TO ARCHITECT, TO BE CONFIRMED PRIOR TO CONSTRUCTION
	STORMWATER PIPE FLOW DIRECTION
	STORMWATER PIPE FALL DIRECTION
	STORMWATER PIT
=====	EXISTING STORMWATER PIPE LOCATION IS INDICATIVE ONLY. LOCATION AND DEPTH TO BE DETERMINED ON SITE PRIOR TO CONSTRUCTION.
===== ExpIT =====	EXISTING STORMWATER PIT. LOCATION AND TYPE TO BE CONFIRMED PRIOR TO CONSTRUCTION
====<====	EXISTING LANDSCAPED SWALE TO REMAIN
GDI	GDI - 150 WIDE x 150 MIN DEEP GRATED DRAIN, REFER DETAILS.
RWT	3,150L RAINWATER LANDSCAPE TANK BY "LANDSCAPE TANKS" REFER DETAILS
OSD 1	3,150L ON-SITE DETENTION LANDSCAPE TANK BY "LANDSCAPE TANKS" REFER DETAILS
OSD 2	2x5,000L (TOTAL 10,000L) BELOW GROUND ON-SITE DETENTION GT-LILO POLY TANK REFER DETAILS

NOTES: ALL DRAINAGE LINES ARE INDICATIVE ONLY. LOCATION MAY VARY DUE TO CONSTRAINTS.

ALL EXISTING ROOF DRAINAGE TO BE CHECKED AND UPGRADED AS REQUIRED. BUILDER TO INSPECT PRIOR TO CONSTRUCTION AND UPGRADE IF REQUIRED IN ACCORDANCE WITH AS3500.3.

NOTE: ALL LEVELS AND SURFACE DRAINAGE FOR LANDSCAPED AREAS TO BE CONFIRMED PRIOR TO CONSTRUCTION, UPON DEVELOPMENT OF ARCHITECTURAL/LANDSCAPE DESIGN. DRAINAGE DETAILS TO BE PROVIDED FOR CONSTRUCTION CERTIFICATE SUBMISSION.

10m LONG DISPERSION TRENCH LAID ON LEVEL CONTOUR (RL 171.90) REFER DETAIL

EXISTING LANDSCAPE SWALE TO REMAIN AS TO MAINTAIN EXISTING STORMWATER CONDITIONS DOWNSTREAM - TYPICAL (FALLS INDICATIVE ONLY)

350x350 GRATED PIT
RL: 173.175 MIN
IL: TBC

600x600 DISPERSION PIT
RL: 171.90
IL: 171.30

BLEED OUT LINE

IN GROUND FIRST FLUSH DEVICE AT LOW POINT IN CHARGED SYSTEM TO MANUFACTURERS SPECIFICATIONS

EMERGENCY OVERLAND FLOW PATH

Ø150 AT 1% MIN FALL

900x900 OSD CONTROL PIT
RL: 173.025
CL: 172.075
IL: 172.04
IL: 171.94

150mm Ø OSD OUTLET PIPE 1% MIN FALL TO OSD CONTROL PIT (ORIFICE AT PIT INLET, REFER DETAIL)

150mm Ø OSD OVERFLOW PIPE 1% MIN FALL TO OSD CONTROL PIT (INDEPENDENT OF ALL OTHER DRAINAGE LINES)

EXISTING 350 RCP BENEATH CARRIAGEWAY

EXISTING HEADWALL (TYPICAL)

PROPOSED POOL OVERFLOW AND WASTE WATER DISCHARGE BY OTHERS

EXISTING LANDSCAPE SWALE TO REMAIN AS TO MAINTAIN EXISTING STORMWATER CONDITIONS DOWNSTREAM - TYPICAL (FALLS INDICATIVE ONLY)

EXISTING 350 RCP BENEATH CARRIAGEWAY - TYPICAL

ALL SURFACE & SUBSOIL DRAINAGE BELOW DECKING IN ACCORDANCE WITH BCA AND AS3500.3. SUBDECK RUNOFF FALL TO GRATED DRAINS, DISCHARGE TO GRATED PITS (TO FUTURE DETAILS). ENSURE TO PROVIDE OVERFLOW ROUTES AS TO AVOID ANY TRAP POINTS.

FOR BALCONY OVERFLOW REQUIREMENTS (TYPICAL FOR ALL BALCONIES). REFER NOTE JB ON DRAWING DOI

EXISTING LANDSCAPE SWALE TO REMAIN AS TO MAINTAIN EXISTING STORMWATER CONDITIONS DOWNSTREAM - TYPICAL (FALLS INDICATIVE ONLY)

3m LONG DISPERSION TRENCH LAID ON LEVEL CONTOUR (RL 174.60) REFER DETAIL

600x600 DISPERSION PIT
RL: 174.60
IL: 174.00

IN GROUND FIRST FLUSH DEVICE AT LOW POINT IN CHARGED SYSTEM TO MANUFACTURERS SPECIFICATIONS

EXISTING HEADWALL (TYPICAL)

EXISTING 350 RCP BENEATH CARRIAGEWAY

3.0m LONG DISPERSION SYSTEM TO BE LAID ON LEVEL CONTOUR REFER TYPICAL DETAIL

EXISTING LANDSCAPE SWALE TO REMAIN AS TO MAINTAIN EXISTING STORMWATER CONDITIONS DOWNSTREAM - TYPICAL (FALLS INDICATIVE ONLY)

600x600 DISPERSION CONTROL PIT
RL: 173.10
IL: 172.50

600x600 OSD CONTROL PIT
RL: 173.97

SITE DRAINAGE PLAN

SCALE = 1 : 200

NOTES:

- THIS DRAWING IS NOT TO BE USED FOR CONSTRUCTION IF THE ISSUE DATE PRECEDES THE ISSUE DATE ON THE ARCHITECTURAL DRAWINGS.
- DO NOT SCALE FROM THIS DRAWING.
- ALL DIMENSIONS ARE TO BE VERIFIED ON SITE BY THE BUILDER BEFORE COMMENCING WITH ASSOCIATED WORK.
- FOR STORMWATER GENERAL NOTES REFER TO DRAWING NUMBER: D01.



NO INVESTIGATION OF UNDERGROUND SERVICES HAS BEEN MADE. ALL RELEVANT AUTHORITIES SHOULD BE NOTIFIED PRIOR TO ANY EXCAVATION ON OR NEAR THE SITE.

DEVELOPERS & EXCAVATORS MAY BE HELD FINANCIALLY RESPONSIBLE BY THE ASSET OWNER SHOULD THEY DAMAGE UNDERGROUND NETWORKS.

CARELESS DIGGING CAN:
- CAUSE DEATH OR SERIOUS INJURY TO WORKERS AND THE GENERAL PUBLIC
- INCONVENIENCE USERS OF ELECTRICITY, GAS, WATER AND COMMUNICATIONS
- LEAD TO CRIMINAL PROSECUTION AND DAMAGES CLAIMS
- CAUSE EXPENSIVE FINANCIAL LOSSES TO BUSINESS
- CUT OFF EMERGENCY SERVICES
- DELAY PROJECT COMPLETION TIMES WHILE THE DAMAGE IS REPAIRED

MINIMISE YOUR RISK AND DIAL BEFORE YOU DIG. - TEL. 1100

350x350 GRATED PIT
RL: 173.175 MIN
IL: TBC

DENOTES 460mm WIDE (2 BRICKS) x 50mm DEEP BRICK V-SWALE MIN 1% MIN FALL TO GRATED PITS

350x350 GRATED PIT
RL: 173.175 MIN
IL: TBC

ACCESS HATCH TO MANUFACTURERS SPECIFICATIONS

350x350 GRATED PIT
RL: 173.175
IL: TBC

EXISTING LANDSCAPE SWALE TO REMAIN AS TO MAINTAIN EXISTING STORMWATER CONDITIONS DOWNSTREAM - TYPICAL

450x450 GRATED PIT
RL: 174.90
IL: 174.50

450x450 GRATED PIT
RL: 174.90
IL: 174.40

EXISTING ROOF TERRACE AND SURFACE DRAINAGE TO REMAIN. BUILDER TO INSPECT AND UPGRADE AND ENSURE THAT THERE ARE NO CHANGES TO EXISTING RUNOFF CONDITIONS AS A RESULT OF THE DEVELOPMENT. ROOF DRAINAGE RE-DIRECT TO NEW RWT SYSTEM, OVERFLOW TO EXISTING SYSTEM.

600x600 GRATED PIT
RL: 174.90
IL: 174.30

150mm Ø uPVC RWT OVERFLOW DISCHARGE TO EXISTING SYSTEM AT 1% IN FALL. IF EXISTING PIPE IS < 150mm Ø CONTACT ENGINEER FOR SPECIFICATION

RWT INLET FROM EXISTING HOUSE DRAINAGE. BUILDER TO INSPECT AND UPGRADE AS REQUIRED

900x900 RAISED RAINWATER CONTROL PIT (SOLID LID)
RL: TBC
IL: REFER DETAIL ON D05

DENOTES 3150L LANDSCAPE TANK TO BE UTILISED FOR RWT STORAGE (TO MANUFACTURERS SPECIFICATIONS) - TYPICAL

IN GROUND FIRST FLUSH DEVICE AT LOW POINT IN CHARGED SYSTEM TO MANUFACTURERS SPECIFICATIONS

BLEED OUT LINE

IF IN DOUBT ASK

Scale check - 100mm when printed to scale

AI

04/05/2022	D	REVISED PLANS AS PER COUNCIL COMMENTS	D.K.	C.J.
26/04/2022	C	REVISED PLANS	D.K.	C.J.
05/04/2022	B	REVISED PLANS FOR DEFERRED COMMENCEMENT CONDITION	D.K.	C.J.
29/06/2021	A	ISSUED FOR DA SUBMISSION ONLY - NOT FOR CONSTRUCTION	D.K.	C.J.
Date:	Issue:	Description:	By:	Review:

DOCUMENT CERTIFICATION

Date: 04/05/2022
Michael Wachjo
B.E.(Civil), MIEAust.
(Director NB Consulting Engineers)
The copyright of this drawing remains with Northern Beaches Consulting Engineers Pty Ltd. Trading as NB Consulting Engineers



Consulting Engineers
STRUCTURAL - CIVIL - STORMWATER - REMEDIAL
A.C.N. 076 121 616 A.B.N. 24 076 121 616
Sydney: Ph: (02) 9984 7000
Suite 207, 30 Fisher Road Dee Why N.S.W. 2099
Gold Coast: Ph: (07) 5631 4744
30 Griffith Street Coolangatta QLD 4225
E: nb@nbconsulting.com.au W: www.nbconsulting.com.au

Architect:

CADENCE & CO DESIGN PTY LTD

Client:

CADENCE & CO DESIGN PTY LTD

Project:

ALTERATIONS & ADDITIONS
6 GUWARA ROAD, DUFFYS FOREST

Drawing Title:

STORMWATER MANAGEMENT
DRAINAGE PLAN - SHEET 1

Date:

JUL 2021

Design:

H.S.

Drawn:

D.K.

Job No:

140609

Drawing No:

D02

Issue:

D

NB Consulting Engineers

LEGEND

- (O) DENOTES PIPE OVER
(U) DENOTES PIPE UNDER
- DP1 • 150mm ϕ uPVC DOWNPIPE DIRECT TO OSD 2 AT MIN 1% FALL
- DP2 • 90mm ϕ DOWNPIPE DIRECT TO OSD 1 VIA A CHARGED LINE
- EG1 200mm ϕ HALF ROUND EAVES GUTTER MIN EFFECTIVE CROSS SECTINOAL AREA 14,500mm²
- CDI 150mm WIDE x 60mm DEEP CHANNEL IN PRE-CAST CONCRETE ROOF MIN 1% MIN FALL TO DP2'S. WATERPROOFING TO MANUFACTURERS SPECIFICATIONS

NOTES: ALL DRAINAGE LINES ARE INDICATIVE ONLY. LOCATION MAY VARY DUE TO CONSTRAINTS.

ALL EXISTING ROOF DRAINAGE TO BE CHECKED AND UPGRADED AS REQUIRED. BUILDER TO INSPECT PRIOR TO CONSTRUCTION AND UPGRADE IF REQUIRED IN ACCORDANCE WITH AS3500.3.

NOTE: ALL LEVELS AND SURFACE DRAINAGE FOR LANDSCAPED AREAS TO BE CONFIRMED PRIOR TO CONSTRUCTION, UPON DEVELOPMENT OF ARCHITECTURAL/LANDSCAPE DESIGN. DRAINAGE DETAILS TO BE PROVIDED FOR CONSTRUCTION CERTIFICATE SUBMISSION.

NOTES:

- THIS DRAWING IS NOT TO BE USED FOR CONSTRUCTION IF THE ISSUE DATE PRECEDES THE ISSUE DATE ON THE ARCHITECTURAL DRAWINGS.
- DO NOT SCALE FROM THIS DRAWING.
- ALL DIMENSIONS ARE TO BE VERIFIED ON SITE BY THE BUILDER BEFORE COMMENCING WITH ASSOCIATED WORK.
- FOR STORMWATER GENERAL NOTES REFER TO DRAWING NUMBER: D01.



NO INVESTIGATION OF UNDERGROUND SERVICES HAS BEEN MADE. ALL RELEVANT AUTHORITIES SHOULD BE NOTIFIED PRIOR TO ANY EXCAVATION ON OR NEAR THE SITE.

DEVELOPERS & EXCAVATORS MAY BE HELD FINANCIALLY RESPONSIBLE BY THE ASSET OWNER SHOULD THEY DAMAGE UNDERGROUND NETWORKS.

CARELESS DIGGING CAN:

- CAUSE DEATH OR SERIOUS INJURY TO WORKERS AND THE GENERAL PUBLIC
- INCONVENIENCE USERS OF ELECTRICITY, GAS, WATER AND COMMUNICATIONS
- LEAD TO CRIMINAL PROSECUTION AND DAMAGES CLAIMS
- CAUSE EXPENSIVE FINANCIAL LOSSES TO BUSINESS
- CUT OFF EMERGENCY SERVICES
- DELAY PROJECT COMPLETION TIMES WHILE THE DAMAGE IS REPAIRED

MINIMISE YOUR RISK AND DIAL BEFORE YOU DIG. - TEL. 1100



ROAD

GUWARA

EXISTING ROOF DRAINAGE TO REMAIN. RE-DIRECT TO NEW LANDSCAPE TANK RAINWATER SYSTEM. BUILDER TO INSPECT/TEST EXISTING CHARGED LINE SYSTEM TO CONFIRM ADEQUACY FOR RE-USE.

ROOF DRAINAGE PLAN

SCALE = 1 : 200

DOCUMENT CERTIFICATION

Date : 04/05/2022
Michael Wachjo
B.E.(Civil), MIEAust.
(Director NB Consulting Engineers)

NB Consulting Engineers
STRUCTURAL - CIVIL - STORMWATER - REMEDIAL
A.C.N. 076 121 616 A.B.N. 24 076 121 616
Sydney: Ph: (02) 9984 7000
Suite 207, 30 Fisher Road Dee Why N.S.W. 2099
Gold Coast: Ph: (07) 5631 4744
30 Griffith Street Coolangatta QLD 4225
E : nb@nbconsulting.com.au W : www.nbconsulting.com.au

Architect:

CADENCE & CO DESIGN PTY LTD

Client:

CADENCE & CO DESIGN PTY LTD

Project:

ALTERATIONS & ADDITIONS
6 GUWARA ROAD, DUFFYS FOREST

Drawing Title:

STORMWATER MANAGEMENT
DRAINAGE PLAN - SHEET 2

Date:

JUL 2021

Design:

H.S.

Drawn:

D.K.

Job No:

140609

Drawing No:

D03

Issue:

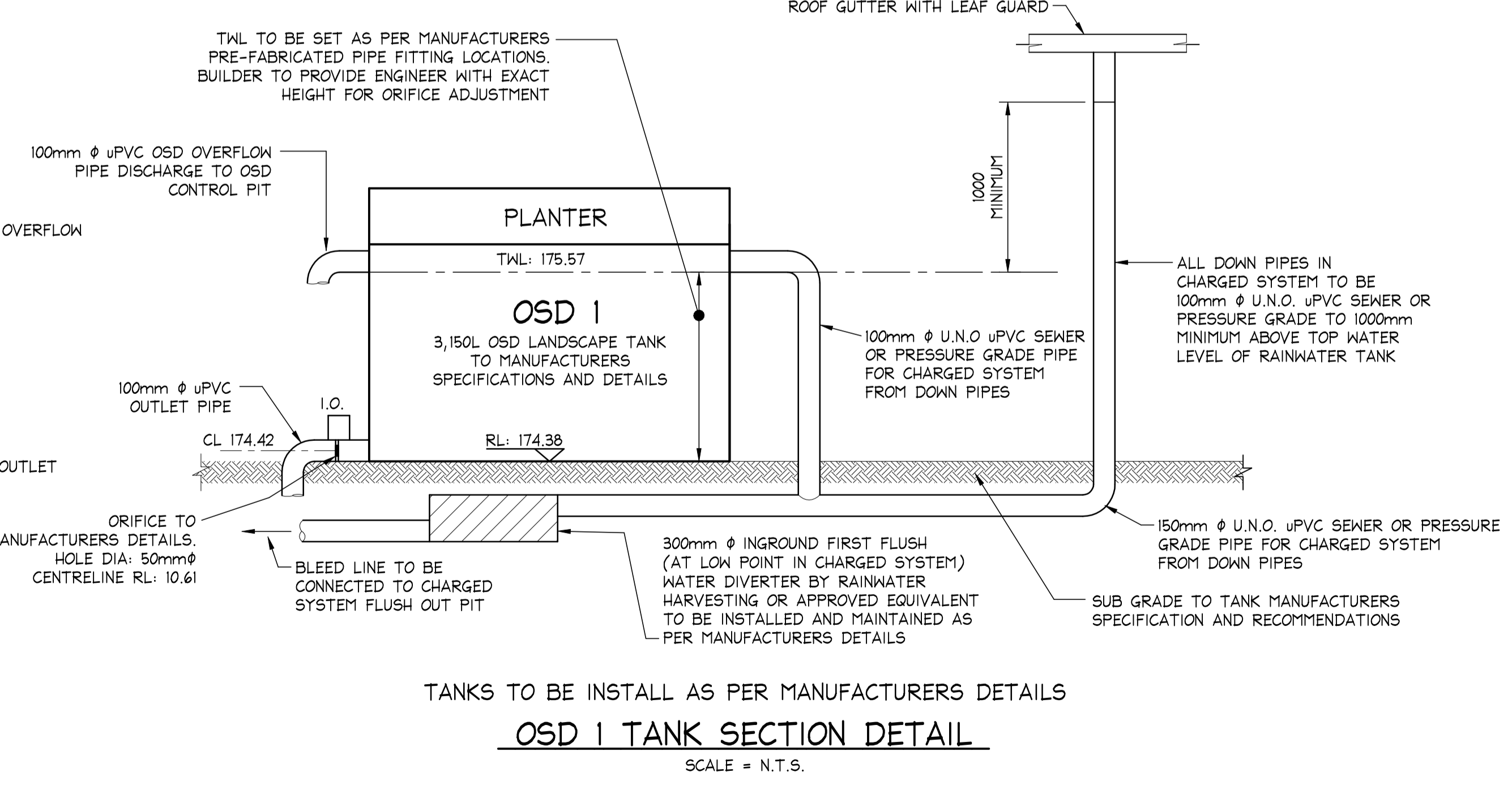
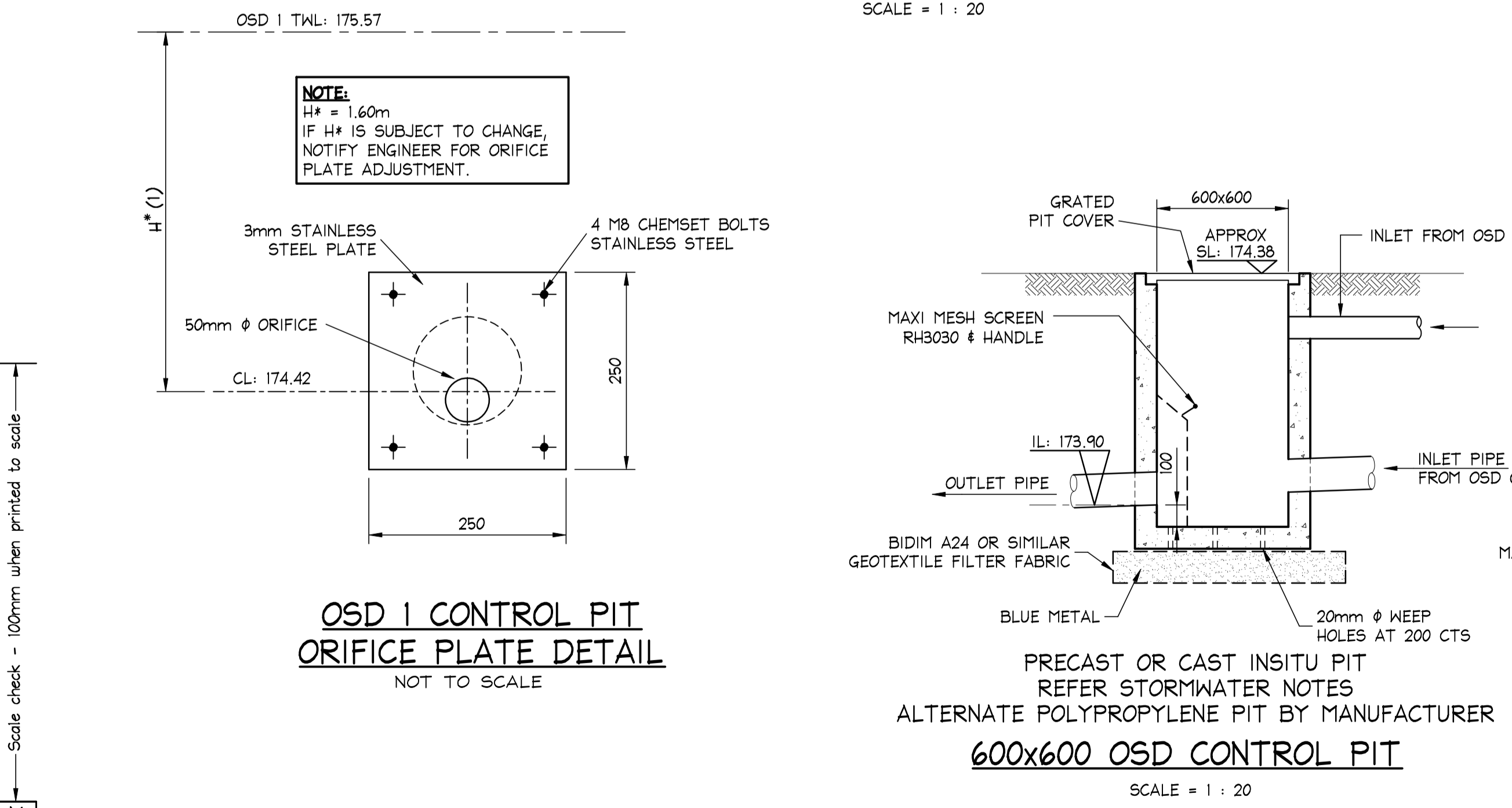
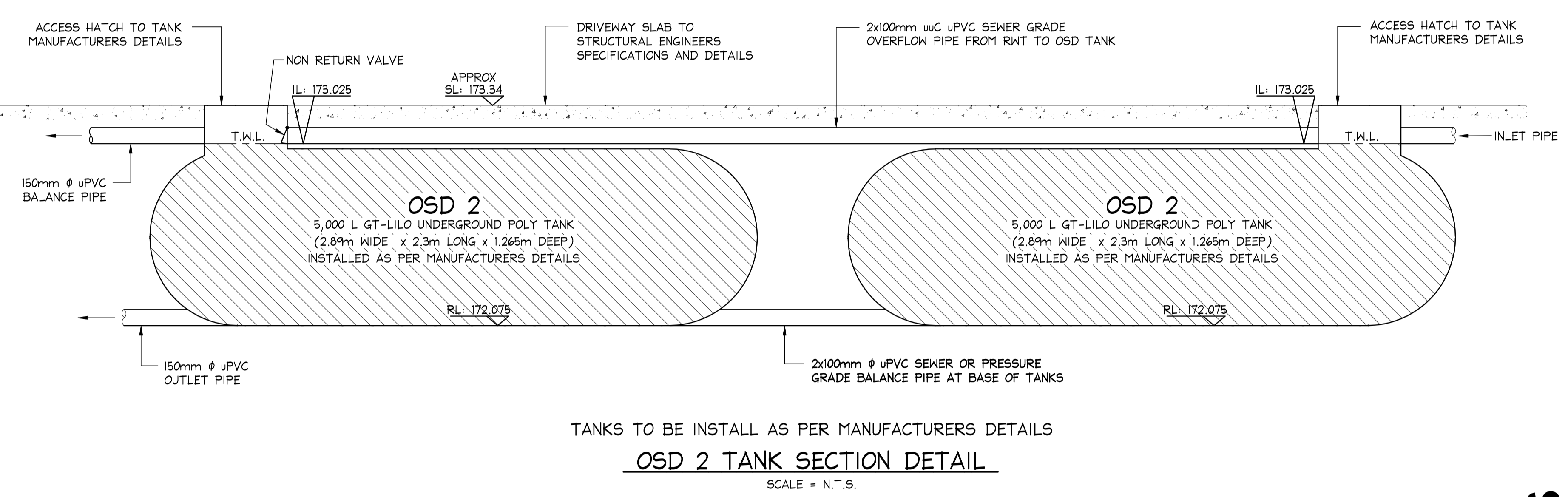
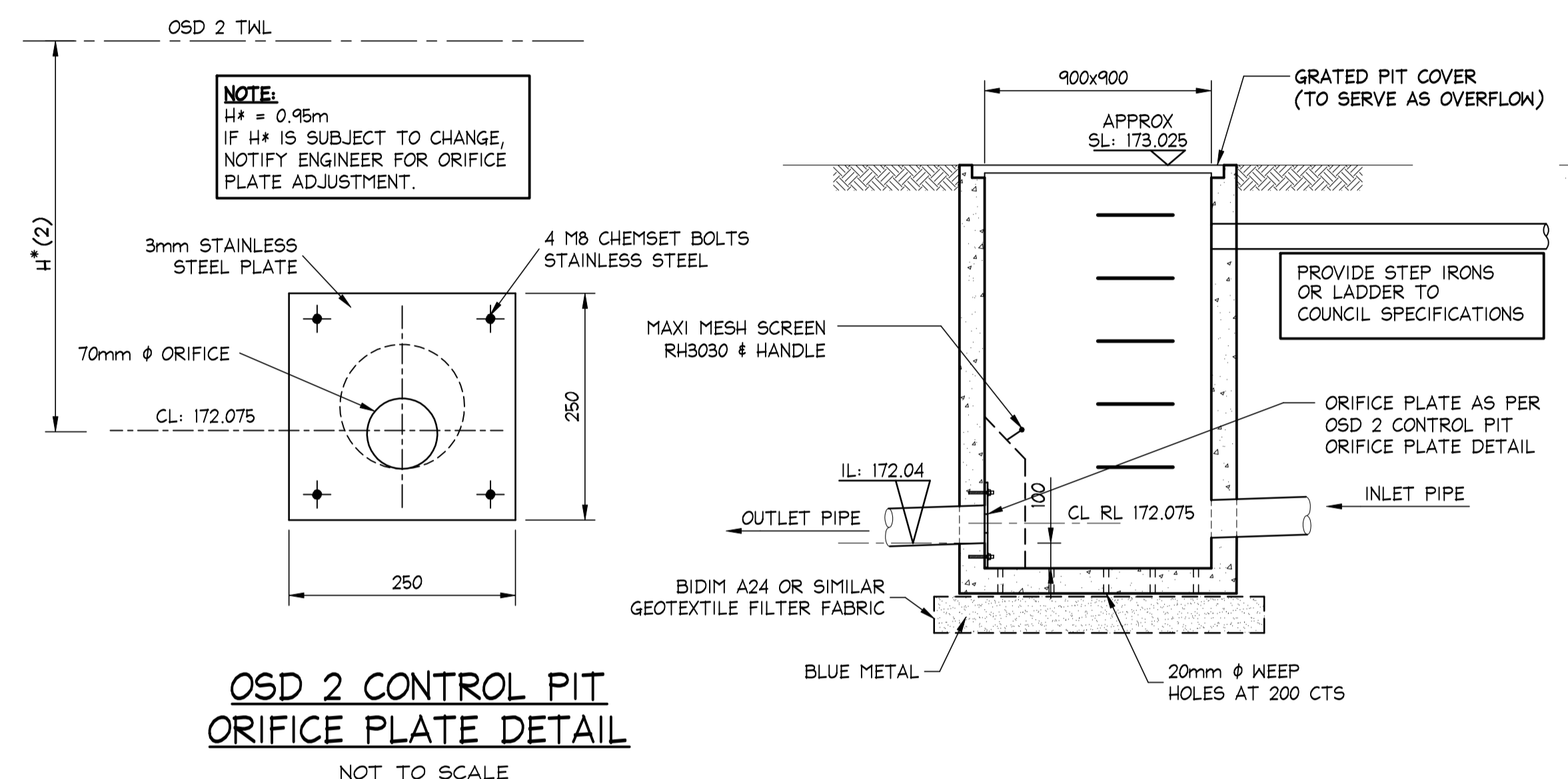
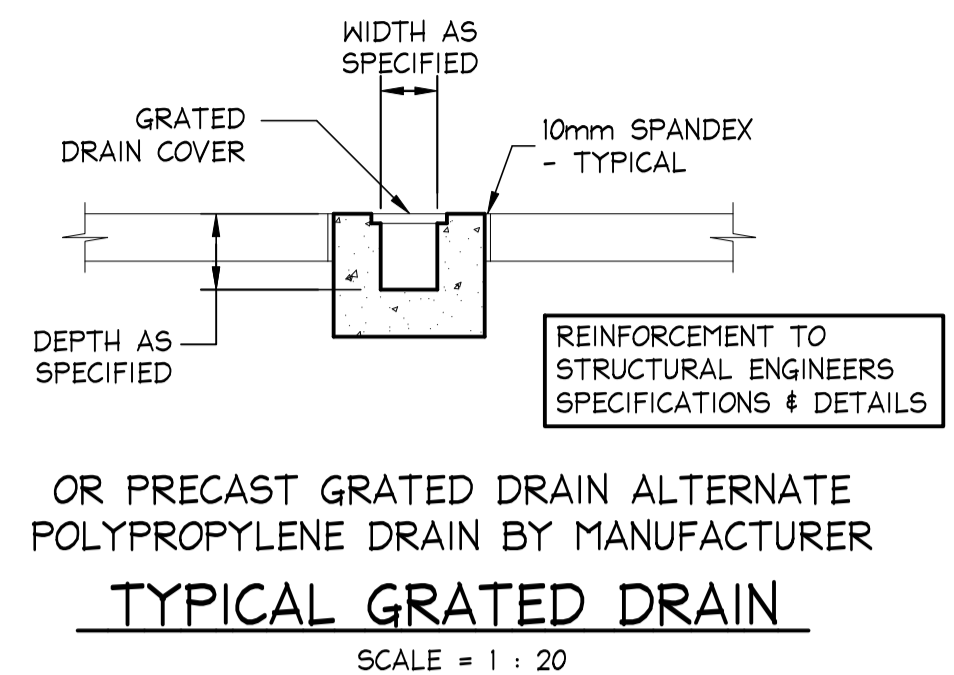
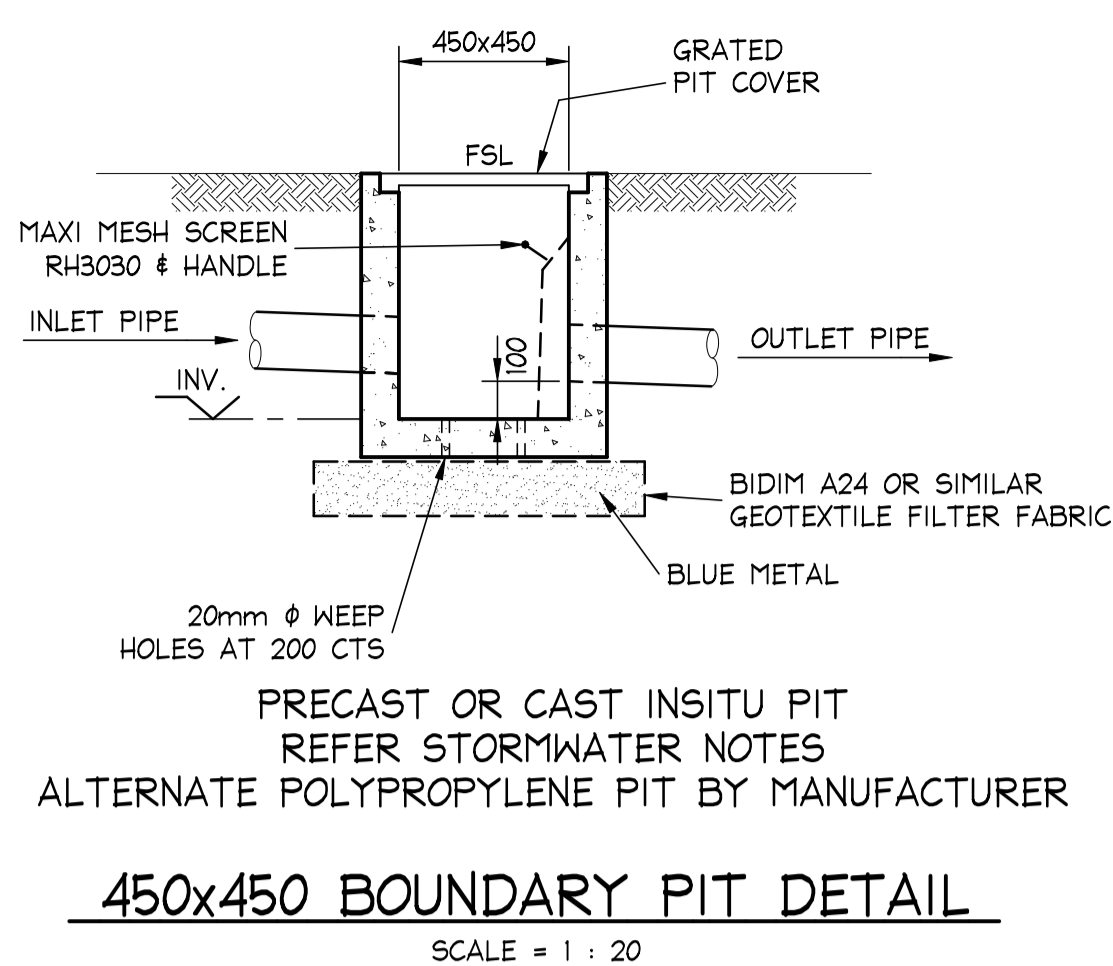
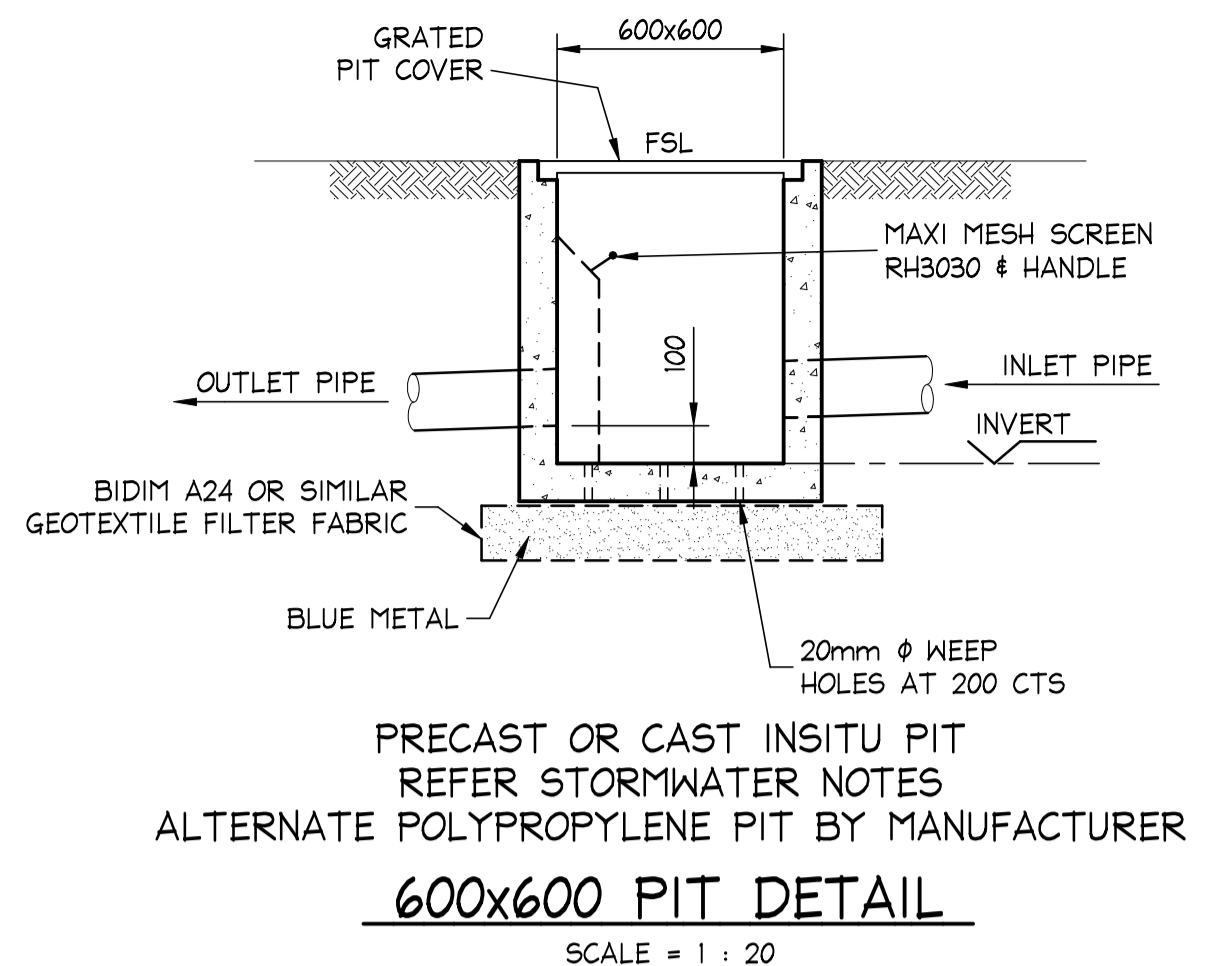
B

Scale check - 100mm when printed to scale

AI

NB Consulting Engineers

- NOTES:**
1. THIS DRAWING IS NOT TO BE USED FOR CONSTRUCTION IF THE ISSUE DATE PRECEDES THE ISSUE DATE ON THE ARCHITECTURAL DRAWINGS.
 2. DO NOT SCALE FROM THIS DRAWING.
 3. ALL DIMENSIONS ARE TO BE VERIFIED ON SITE BY THE BUILDER BEFORE COMMENCING WITH ASSOCIATED WORK.
 4. FOR STORMWATER GENERAL NOTES REFER TO DRAWING NUMBER: D01.

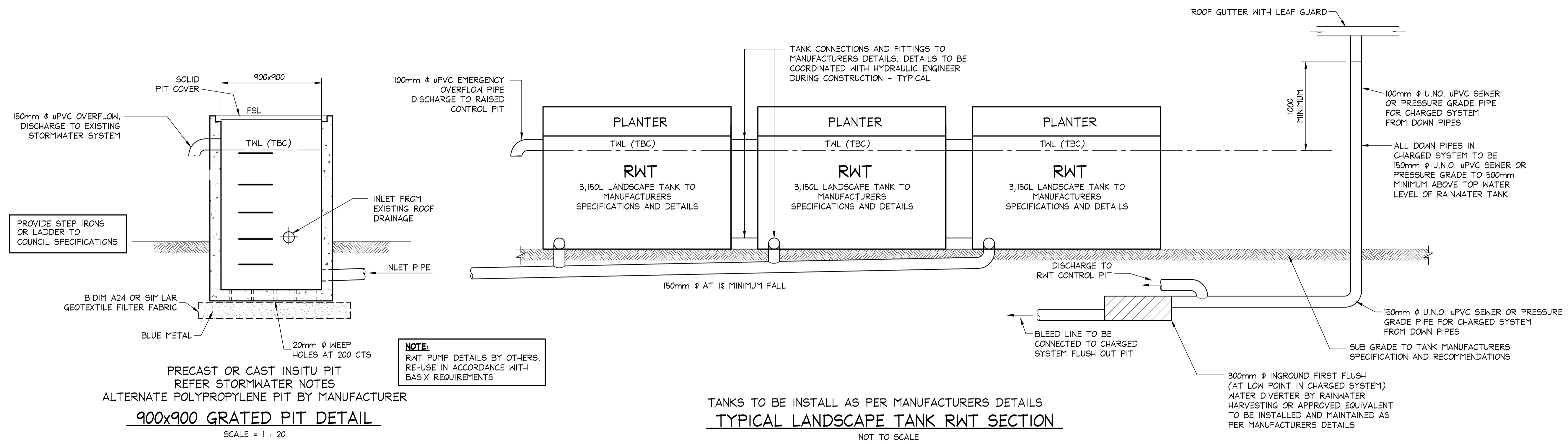


ISSUED FOR COUNCIL
SUBMISSION ONLY
NOT FOR
CONSTRUCTION
IF IN DOUBT ASK

DOCUMENT CERTIFICATION			Consulting Engineers			Architect:			Project:			Date:	Design:	Drawn:
Date: 04/05/2022			STRUCTURAL - CIVIL - STORMWATER - REMEDIAL			CADENCE & CO DESIGN PTY LTD			ALTERATIONS & ADDITIONS			JUL 2021	H.S.	D.K.
05/04/2022			A.C.N. 076 121 616 A.B.N. 24 076 121 616			Client:			6 GUWARA ROAD, DUFFYS FOREST					
29/06/2021			Sydney: Ph: (02) 9984 7000			CADENCE & CO DESIGN PTY LTD			Drawing Title:			Job No:		
			Suite 207, 30 Fisher Road Dee Why N.S.W. 2099						SECTION & DETAILS - SHEET 1			140609		
			Gold Coast: Ph: (07) 5631 4744									D04		
			30 Griffith Street Coolangatta QLD 4225									C		
			E : nb@nbconsulting.com.au W : www.nbconsulting.com.au											

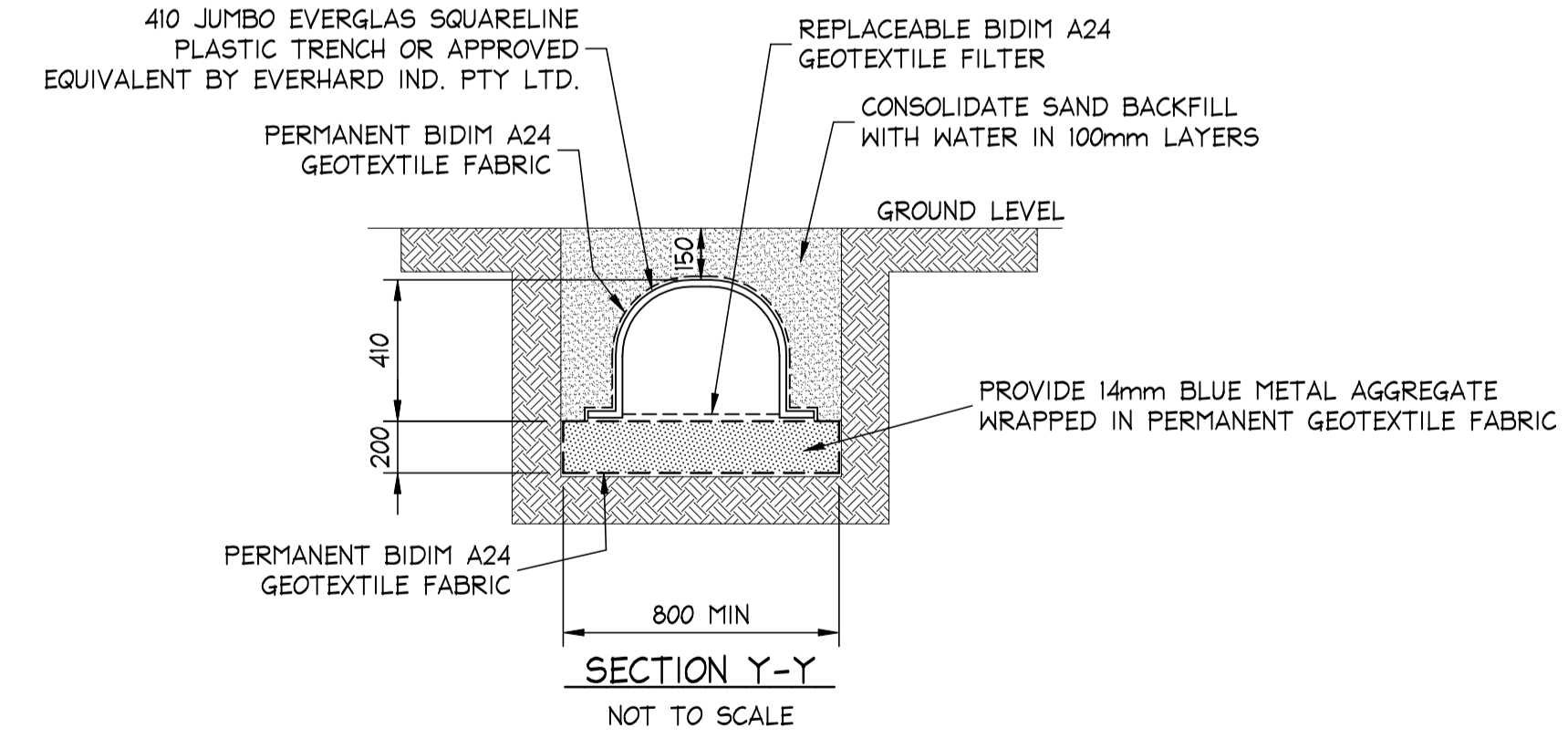
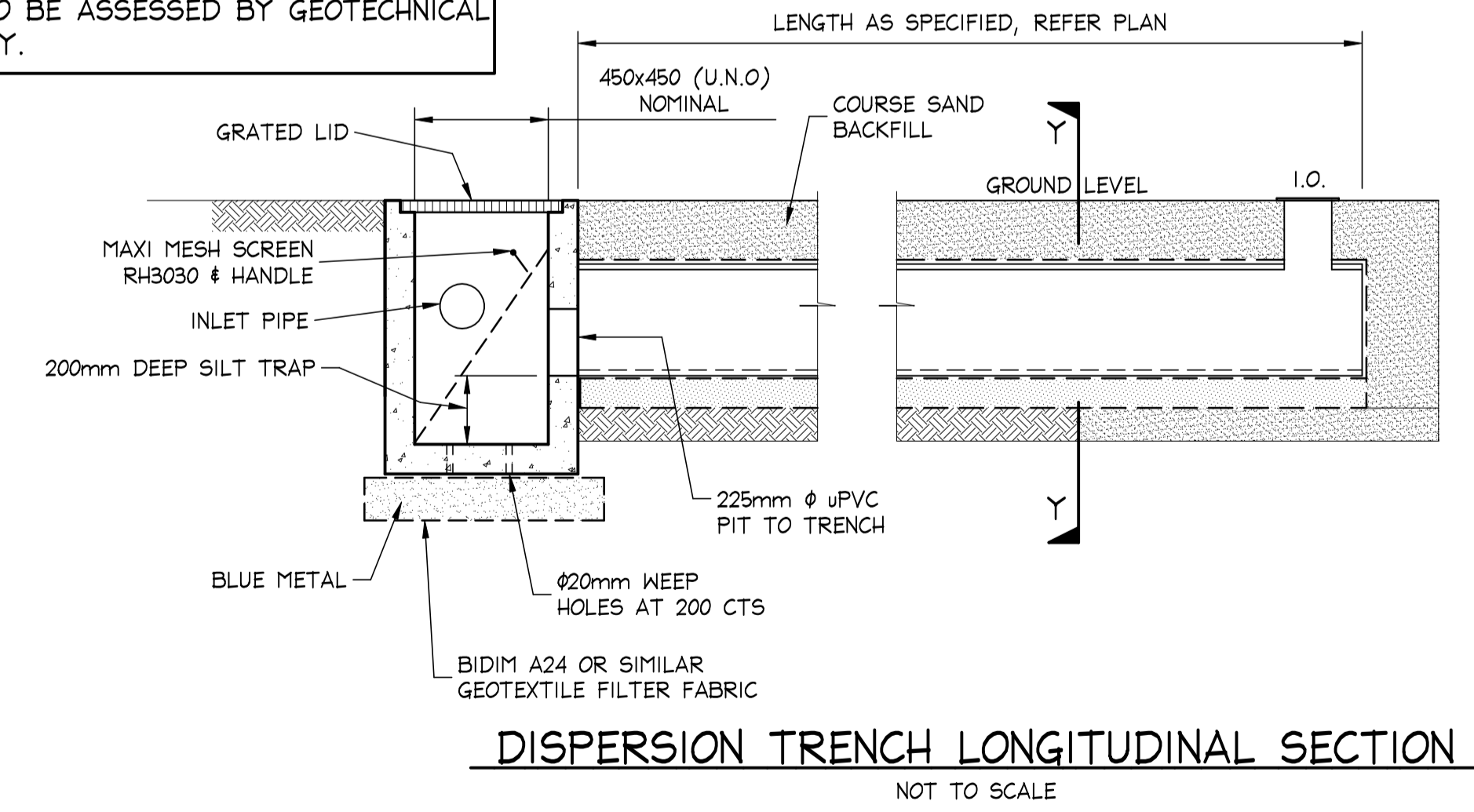
NB Consulting Engineers

- NOTES:**
1. THIS DRAWING IS NOT TO BE USED FOR CONSTRUCTION IF THE ISSUE DATE PRECEDES THE ISSUE DATE ON THE ARCHITECTURAL DRAWINGS.
 2. DO NOT SCALE FROM THIS DRAWING.
 3. ALL DIMENSIONS ARE TO BE VERIFIED ON SITE BY THE BUILDER BEFORE COMMENCING WITH ASSOCIATED WORK.
 4. FOR STORMWATER GENERAL NOTES REFER TO DRAWING NUMBER: D01.



NOTE: DISPERSION TRENCH

1. DISPERSION TRENCH TO BE LAID ON A LEVEL CONTOUR.
2. GROUND LEVEL ABOVE TRENCH MUST BE LEVEL SO AS TO EVENLY DISPERSE WATER DOWN HILL OF THE TRENCH
3. IF ROCK IS ENCOUNTERED DURING EXCAVATION FOR DISPERSION TRENCH NOTIFY ENGINEER FOR ALTERNATE DETAIL.
4. DISPERSION TRENCH SYSTEM TO BE ASSESSED BY GEOTECHNICAL ENGINEER FOR SITE SUITABILITY.



ISSUED FOR COUNCIL
SUBMISSION ONLY
NOT FOR
CONSTRUCTION

IF IN DOUBT ASK

																																																																																																																																																																																																																																																																																																																																																																																																																																																																																																																																																																																																																																																																																																																																																																																																																																																																																																																																																																																																																																																																																																																																																																																																																																																																																																																																																																																																																					</
--	--	--	--	--	--	--	--	--	--	--	--	--	--	--	--	--	--	--	--	--	--	--	--	--	--	--	--	--	--	--	--	--	--	--	--	--	--	--	--	--	--	--	--	--	--	--	--	--	--	--	--	--	--	--	--	--	--	--	--	--	--	--	--	--	--	--	--	--	--	--	--	--	--	--	--	--	--	--	--	--	--	--	--	--	--	--	--	--	--	--	--	--	--	--	--	--	--	--	--	--	--	--	--	--	--	--	--	--	--	--	--	--	--	--	--	--	--	--	--	--	--	--	--	--	--	--	--	--	--	--	--	--	--	--	--	--	--	--	--	--	--	--	--	--	--	--	--	--	--	--	--	--	--	--	--	--	--	--	--	--	--	--	--	--	--	--	--	--	--	--	--	--	--	--	--	--	--	--	--	--	--	--	--	--	--	--	--	--	--	--	--	--	--	--	--	--	--	--	--	--	--	--	--	--	--	--	--	--	--	--	--	--	--	--	--	--	--	--	--	--	--	--	--	--	--	--	--	--	--	--	--	--	--	--	--	--	--	--	--	--	--	--	--	--	--	--	--	--	--	--	--	--	--	--	--	--	--	--	--	--	--	--	--	--	--	--	--	--	--	--	--	--	--	--	--	--	--	--	--	--	--	--	--	--	--	--	--	--	--	--	--	--	--	--	--	--	--	--	--	--	--	--	--	--	--	--	--	--	--	--	--	--	--	--	--	--	--	--	--	--	--	--	--	--	--	--	--	--	--	--	--	--	--	--	--	--	--	--	--	--	--	--	--	--	--	--	--	--	--	--	--	--	--	--	--	--	--	--	--	--	--	--	--	--	--	--	--	--	--	--	--	--	--	--	--	--	--	--	--	--	--	--	--	--	--	--	--	--	--	--	--	--	--	--	--	--	--	--	--	--	--	--	--	--	--	--	--	--	--	--	--	--	--	--	--	--	--	--	--	--	--	--	--	--	--	--	--	--	--	--	--	--	--	--	--	--	--	--	--	--	--	--	--	--	--	--	--	--	--	--	--	--	--	--	--	--	--	--	--	--	--	--	--	--	--	--	--	--	--	--	--	--	--	--	--	--	--	--	--	--	--	--	--	--	--	--	--	--	--	--	--	--	--	--	--	--	--	--	--	--	--	--	--	--	--	--	--	--	--	--	--	--	--	--	--	--	--	--	--	--	--	--	--	--	--	--	--	--	--	--	--	--	--	--	--	--	--	--	--	--	--	--	--	--	--	--	--	--	--	--	--	--	--	--	--	--	--	--	--	--	--	--	--	--	--	--	--	--	--	--	--	--	--	--	--	--	--	--	--	--	--	--	--	--	--	--	--	--	--	--	--	--	--	--	--	--	--	--	--	--	--	--	--	--	--	--	--	--	--	--	--	--	--	--	--	--	--	--	--	--	--	--	--	--	--	--	--	--	--	--	--	--	--	--	--	--	--	--	--	--	--	--	--	--	--	--	--	--	--	--	--	--	--	--	--	--	--	--	--	--	--	--	--	--	--	--	--	--	--	--	--	--	--	--	--	--	--	--	--	--	--	--	--	--	--	--	--	--	--	--	--	--	--	--	--	--	--	--	--	--	--	--	--	--	--	--	--	--	--	--	--	--	--	--	--	--	--	--	--	--	--	--	--	--	--	--	--	--	--	--	--	--	--	--	--	--	--	--	--	--	--	--	--	--	--	--	--	--	--	--	--	--	--	--	--	--	--	--	--	--	--	--	--	--	--	--	--	--	--	--	--	--	--	--	--	--	--	--	--	--	--	--	--	--	--	--	--	--	--	--	--	--	--	--	--	--	--	--	--	--	--	--	--	--	--	--	--	--	--	--	--	--	--	--	--	--	--	--	--	--	--	--	--	--	--	--	--	--	--	--	--	--	--	--	--	--	--	--	--	--	--	--	--	--	--	--	--	--	--	--	--	--	--	--	--	--	--	--	--	--	--	--	--	--	--	--	--	--	--	--	--	--	--	--	--	--	--	--	--	--	--	--	--	--	--	--	--	--	--	--	--	--	--	--	--	--	--	--	--	--	--	--	--	--	--	--	--	--	--	--	--	--	--	--	--	--	--	--	--	--	--	--	--	--	--	--	--	--	--	--	--	--	--	--	--	--	--	--	--	--	--	--	--	--	--	--	--	--	--	--	--	--	--	--	--	--	--	--	--	--	--	--	--	--	--	--	--	--	--	--	--	--	--	--	--	--	--	--	--	--	--	--	--	--	--	--	--	--	--	--	--	--	--	--	--	--	--	--	--	--	--	--	--	--	--	--	--	--	--	--	--	--	--	--	--	--	--	--	--	--	--	--	--	--	--	--	--	--	--	--	--	--	--	--	--	--	--	--	--	--	--	--	--	--	--	--	--	--	--	--	--	--	--	--	--	--	--	--	--	--	--	--	--	--	--	--	--	--	--	--	--	--	--	--	--	--	--	--	--	--	--	--	--	--	--	--	--	--	--	--	--	--	--	--	--	--	--	--	--	--	--	--	--	--	--	--	--	--	--	--	--	--	--	--	--	--	--	--	--	--	--	--	--	--	--	--	--	--	--	--	--	--	--	--	--	--	--	--	--	--	--	--	--	--	--	--	--	--	--	--	--	--	--	--	--	--	--	--	--	--	--	--	--	--	--	--	--	--	--	--	--	--	--	--	--	--	--	--	--	--	--	--	--	--	--	--	--	--	--	--	--	--	--	--	--	--	--	--	--	--	--	--	--	--	--	--	--	--	--	--	--	--	--	--	--	--	--	--	--	--	--	--	--	--	--	--	--	--	--	--	--	--	--	--	--	--	--	--	--	--	--	--	--	--	--	--	--	--	--	--	--	--	--	--	--	--	--	--	--	--	--	--	--	--	--	--	--	--	--	--	--	--	--	--	--	--	--	--	--	--	--	--	--	--	--	--	--	--	--	--	--	--	--	--	--	--	--	--	--	--	--	--	--	--	--	--	--	--	--	--	--	--	--	--	--	--	--	--	--	--	--	--	--	--	--	--	--	--	--	--	--	--	--	--	--	--	--	--	--	--	--	--	--	--	--	--	--	--	--	--	--	--	--	--	--	--	--	--	--	--	--	--	--	--	----

NB Consulting Engineers