

LEGEND:-

- VC denotes VEHICLE CROSSING
B denotes BOLLARD
TK denotes TOP OF KERB
GUT denotes KERB GUTTER
LIP denotes LIP LINE
CL denotes CENTRELINE
COM denotes COMMUNICATIONS PIT
PP denotes POWER POLE
LP denotes LIGHT POLE
ELP denotes ELECTRICITY PILLAR
SIP denotes SEWER INSPECTION PIT
SS denotes STREET SIGN
TB denotes TOP OF BANK
BB denotes BOTTOM OF BANK
TW denotes TOP OF WALL
BW denotes BOTTOM OF WALL
D.S.H denotes DIAMETER, SPREAD and HEIGHT of TREE

UNDERGROUND SERVICES LEGEND - QUALITY LEVEL D (AS 5488-2013)

S SEWER MAIN
C COMMUNICATIONS CABLES

CAUTION: FIBRE OPTIC CABLES ARE PRESENT IN THIS AREA

APPROXIMATE POSITION ONLY VIDE 'DIAL-BEFORE-YOU-DIG' PLANS
JOB No. 21730529. WHERE CRITICAL TO DESIGN, UNDERGROUND
SERVICES SHOULD BE LOCATED BY MORE ACCURATE METHODS.

SERVICES NOTES:-

1. ONLY THOSE SERVICES VISIBLE AT THE TIME OF SURVEY HAVE BEEN
LOCATED AND IF SHOWN AS "1, 0, 0, 0" ARE QUALITY LEVEL A AS DEFINED
BY AS 5488-2013. LEVELS SHOWN ARE SURFACE LEVELS UNLESS NOTED
OTHERWISE.

2. UNDERGROUND SERVICES HAVE BEEN PLOTTED FROM
'DIAL-BEFORE-YOU-DIG' PLANS AND ARE QUALITY LEVEL D AS DEFINED BY
AS 5488-2013. ALL RELEVANT AUTHORITIES MUST BE CONTRACTED TO
DETERMINE THE FULL EXTENT OF SERVICES PRIOR TO ANY PLANNING OR
WORKS NEAR THE SITE.

Schedule of Easements & Restrictions	
No	Description
(A)	RESTRICTION ON THE USE OF LAND - 5.0 WIDE (DP875858)
(B)	RIGHT OF CARRIAGEWAY 4.0 WIDE (AE960449)

- THIS SURVEY HAS ADOPTED MGA 2020 COORDINATES WHICH ARE BASED ON THE NEW GDA2020 DATUM.
- THESE MGA2020 EASTING AND NORTHING COORDINATES ARE APPROXIMATELY 1.8 METRES DIFFERENT TO THE MGA94 CORDINATES BASED ON THE GDA94 DATUM.
- GDA2020 IS A STATIC DATUM - JUST LIKE GDA94 - THE COORDINATES OF FEATURES DO NOT CHANGE WITH TIME.
- FROM 2022 MGA94 COORDINATES WILL NO LONGER BE AVAILABLE.
- HEIGHTS SHOWN ON THIS PLAN ARE STILL RELATED TO THE AUSTRALIAN HEIGHT DATUM (AHD71).

Schedule of Trees			
No	Diam	Spread	Height
1	0.3	3	3
2	0.3	10	10
3	0.5	10	10
4	0.2	6	10
5	0.4	12	10
6	0.3	8	8
7	0.3	8	12
8	0.6	14	14
9	0.2	4	8
10	0.2	4	8
11	0.7	14	15
12	0.3	6	8
13	0.4	14	18
14	0.3	14	14
15	0.6	12	12
16	0.6	14	16
17	0.2	8	8
18	0.3	10	10
19	0.2	8	8
20	0.2	8	10
21	0.3	8	12
22	0.2	4	8
23	0.3	8	10
24	0.2	4	8
25	0.5	8	10
26	0.4	8	10
27	0.5	8	12
28	0.3	6	12
29	0.3	8	12
30	0.4	8	10
31	0.2	4	6
32	0.4	6	8
33	0.4	6	8
34	0.2	8	10
35	0.4	12	12
36	0.3	8	12
37	0.4	10	14
38	0.6	14	16
39	0.3	8	12
40	0.2	6	6
41	0.2	4	8
42	0.3	6	12
43	0.2	6	10
44	0.2	8	10
45	0.2	6	8
46	0.3	8	12
47	0.2	6	8
48	0.2	6	8
49	0.3	6	10
50	0.3	8	12
51	0.7	14	16
52	0.5	12	14
53	0.2	8	12
54	0.4	8	10
55	0.5	12	14
56	0.4	6	6
57	0.3	8	12
58	0.2	6	10
59	0.4	8	10
60	0.2	6	10
61	0.2	6	10
62	0.3	6	12
63	0.2	6	10
64	0.2	6	10
65	0.2	6	12
66	0.3	6	12
67	0.4	14	14
68	0.2	6	10
69	0.2	6	8
70	0.2	6	8
71	0.3	6	12
72	0.2	8	10
73	0.2	6	8
74	0.2	6	8
75	0.3	8	10
76	0.9	12	14
77	0.2	4	6
78	0.6	12	12
79	0.2	6	6
80	0.2	6	9
81	0.2	6	9
82	0.2	6	9
83	0.3	6	9
84	0.3	6	9
85	0.3	6	9
86	0.2	6	8
87	0.4	12	14
88	0.3	8	10
89	0.4	10	10
90	0.4	8	12
91	1.0	10	10
92	0.2	4	4
93	0.4	8	10
94	0.3	8	8

95	0.3	8	10
96	0.2	6	8
97	0.5	8	12
98	0.2	4	5
99	0.2	4	8
100	0.2	4	8
101	0.3	6	10
102	0.2	4	8
103	0.3	4	12
104	0.3	8	10
105	0.3	8	10
106	0.4	12	14
107	0.4	12	12
108	0.6	12	12
109	0.2	4	8
110	0.3	8	12
111	0.3	8	12
112	0.2	4	6
113	0.2	4	6
114	0.2	4	6
115	0.5	12	12
116	0.2	4	6
117	0.6	12	15
118	0.5	10	12
119	0.2	4	10
120	0.2	4	10
121	0.3	6	10
122	0.2	4	8
123	0.3	6	8
124	0.3	8	12
125	0.6	8	12
126	0.2	4	10
127	0.4	8	8
128	0.7	12	14
129	0.3	4	10
130	0.3	8	12
131	0.6	8	10
132	0.2	4	6
133	0.3	5	10
134	0.4	8	10
135	0.4	6	6
136	0.4	8	10
137	0.3	4	10
138	0.2	6	6
139	0.3	6	6
140	0.3	6	10
141	0.2	4	6
142	0.3	6	8
143	0.2	2	6
144	0.5	8	12
145	0.3	4	10
146	0.6	15	15
147	0.4	10	20
148	0.5	12	15
149	0.2	6	8
150	0.2	6	8
151	0.2	6	8
152	0.2	6	8
153	0.2	4	10
154	0.5	10	15
155	0.5	10	15
156	0.4	10	15
157	0.4	10	15
158	0.3	8	12
159	0.3	8	12
160	0.3	8	12
161	0.4	12	15
162	0.3	8	8
163	0.3	10	12
164	0.3	8	12
165	0.5	15	18
166	0.5	10	12
167	0.5	10	12
168	0.2	8	10
169	0.5	10	15
170	0.5	12	12
171	0.4	8	15
172	0.4	10	12
173	0.4	10	12
174	0.4	10	12
175	0.4	8	10
176	0.4	8	10
177	0.5	12	18
178	0.3	8	15
179	0.3	4	12
180	0.3	4	12
181	0.3	8	15
182	0.4	10	15
183	0.4	10	15
184	0.4	10	15
185	0.5	10	10
186	0.3	6	10
187	0.2	4	8
188	0.5	5	8
189	0.5	10	15
190	0.3	10	10

191	0.3	8	12
192	0.3	8	12
193	0.3	8	12
194	0.5	8	12
195	0.4	8	10
196	0.5	10	12
197	0.4	8	8
198	0.4	8	10
199	0.3	8	15
200	0.4	8	8
201	0.7	15	18
202	0.3	6	12
203	0.3	6	12
204	0.3	6	12
205	0.4	10	12
206	0.8	15	20
207	0.2	6	10
208	0.2	6	10
209	0.2	6	10
210	0.2	6	10
211	0.5	10	15
212	0.5	10	15
213	0.3	6	12
214	0.4	10	15
215	0.8	20	20
216	0.3	6	10
217	0.3	8	12
218	0.2	8	10
219	0.2	8	10
220	0.4	8	15
221	0.2	6	10
222	0.2	6	10
223	0.3	8	12
224	0.3	8	12
225	0.4	15	12
226	0.4	8	12
227	0.3	6	12
228	0.3	8	12
229	0.4	10	12
230	0.6	20	15
231	0.3	10	15
232	0.2	8	12
233	0.4	8	12
234	0.4	8	12
235	0.4	8	12
236	0.5	8	12
237	0.3	8	10
238	0.4	10	15
239	0.5	10	15
240	0.3	8	15
241	0.3	6	8
242	0.5	15	18
243	0.4	12	15
244	0.4	8	15
245	0.3	8	12
246	0.4	6	12
247	0.5	10	15
248	0.3	6	15
249	0.4	8	15
250	0.5	10	15
251	0.4	12	15
252	0.4	12	15
253	0.4	12	12
254	0.3	8	10
255	0.2	6	10
256	0.3	6	10
257	0.3	6	10
258	0.3	6	10
259	0.3	5	12
260	0.3	5	12
261	0.3	5	12
262	0.3	5	12
263	0.3	8	12
264	0.3	8	12
265	0.2	4	10
266	0.5	12	15
267	0.5	12	15
268	0.3	6	15
269	0.2	6	12
270	0.4	6	12
271	0.4	10	15
272	0.3	10	15
273	0.4	10	15
274	0.5	12	12
275	0.3	6	6
276	0.3	6	8
277	0.3	6	12

GENERAL NOTES

ONLY TREES GREATER THAN 3.5 METRES IN HEIGHT ARE SHOWN ON THIS PLAN AND THEIR POSITIONS ARE DIAGRAMMATIC ONLY AND MAY REQUIRE ADDITIONAL SURVEY WHERE CRITICAL TO DESIGN.

CONTOURS ARE INDICATIVE AT GROUND FORM ONLY. SPOT LEVELS ONLY SHOULD BE USED FOR CALCULATIONS OF QUANTITIES WITH CAUTION.

LEVELS ARE ON AUSTRALIAN HEIGHT DATUM (AHD).

ALL SETOUT LEVELS MUST BE REFERRED TO THE BENCH MARK SHOWN ON THIS PLAN.

BOUNDARY NOTES

BOUNDARIES OF THE SITE HAVE BEEN IDENTIFIED BY SURVEY.

BOUNDARIES HAVE NOT BEEN MARKED.

SURVEY INFORMATION NOTES

THE ORIGIN OF COORDINATES COMES FROM SSM88206 E333954.228 N6269239.469 CLASS C POSITIONAL UNCERTAINTY (PU) N/A (MGA2020) ADOPTED FROM SCIMS DATED 08/06/2021.

THE ORIGIN OF LEVELS COMES FROM SSM75296 RL179.240 CLASS LC POSITIONAL UNCERTAINTY (PU) N/A ADOPTED FROM SCIMS DATED 08/06/2021.

THE ORIENTATION OF THIS PLAN IS MGA NORTH WHICH HAS BEEN DETERMINED BY A COORDINATE JOIN BETWEEN SSM88206 AND SSM75296.

CERTIFICATE OF TITLE NOTES

THE FOLLOWING INFORMATION RELATES TO THE RESPECTIVE CERTIFICATE OF TITLE OF EACH LOTS:

- LOT 502 IN DP875858 (CT EDITION 9 DATED 18/10/2019 SEARCH DATE 01/06/2021)
- AFFECTED BY:
 - RIGHT OF CARRIAGEWAY 4.0 WIDE (AE960449)
 - RESTRICTION ON THE USE OF LAND (DP265029, DP852750, DP875858 & 0897327)
 - COVENANT (0908998 & DP265029)
- BENEFITED BY BY:
 - EASEMENT FOR ACCESS AND DRAINAGE AND WATER MANAGEMENT (DP807013)

COVENANTS AND RESTRICTIONS NOTED ON THE TITLE HAVE NOT BEEN INVESTIGATED. THESE SHOULD BE INVESTIGATED PRIOR TO DESIGN TO ENSURE ANY FUTURE DEVELOPMENT COMPLIES.

SERVICES NOTES

ONLY THOSE SERVICES VISIBLE AT THE TIME OF SURVEY HAVE BEEN LOCATED AND ARE QUALITY LEVEL A AS DEFINED BY AS 5488.1:2019.

UNDERGROUND SERVICES HAVE BEEN PLOTTED FROM 'DIAL-BEFORE-YOU-DIG' PLANS, ARE QUALITY LEVEL D AS DEFINED BY AS 5488.1:2019 AND ARE ONLY CURRENT AT THE DATE OF SEARCH.

ALL RELEVANT AUTHORITIES MUST BE CONTACTED TO DETERMINE THE FULL EXTENT OF SERVICES PRIOR TO ANY PLANNING OR WORKS NEAR THE SITE.

© COPYRIGHT

THIS PLAN IS NOT TO BE USED FOR ANY PURPOSE OTHER THAN ITS ORIGINAL INTENTION AND REMAINS THE PROPERTY OF SDG. THIS PLAN CANNOT BE REPRODUCED, COPIED OR DIGITALLY TRANSFERRED (IN WHOLE OR PART) WITHOUT PRIOR WRITTEN PERMISSION OF SDG.

PROJECT:

DETAIL AND LEVEL SURVEY OF
LOT 502 IN DP875858

4 MINNA CLOSE
BELROSE

CLIENT: WU PROPERTIES

FILE: 8484_4 Minna Close Belmore_rev B

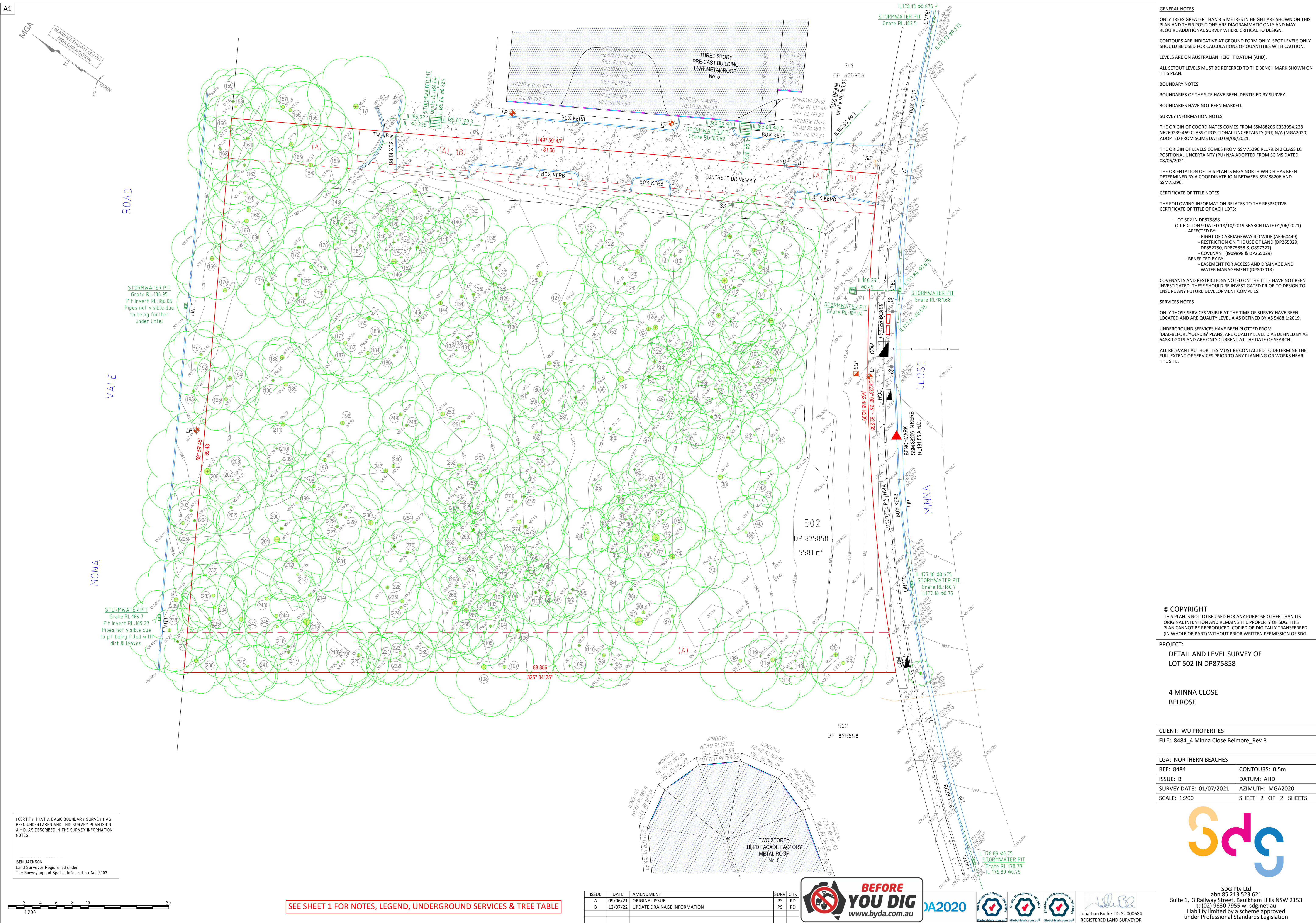
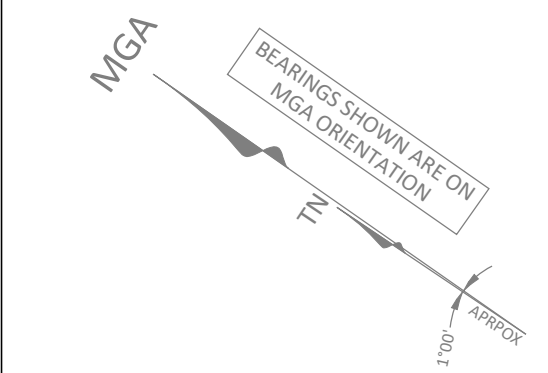
LGA: NORTHERN BEACHES

REF: 8484	CONTOURS: 0.5m
ISSUE: B	DATUM: AHD
SURVEY DATE: 01/07/2021	AZIMUTH: MGA2020
SCALE: 1:200	SHEET 1 OF 2 SHEETS



SDG Pty Ltd
abn 85 213 523 621
Suite 1, 3 Railway Street, Baulkham Hills NSW 2153
t: (02) 9630 7955 w: sdg.net.au
Liability limited by a scheme approved under Professional Standards Legislation

ISSUE	DATE	AMENDMENT	SURV	CHK
A	09/06/21	ORIGINAL ISSUE	PS	PD
B	12/07/22	UPDATE DRAINAGE INFORMATION	PS	PD



GENERAL NOTES

ONLY TREES GREATER THAN 3.5 METRES IN HEIGHT ARE SHOWN ON THIS PLAN AND THEIR POSITIONS ARE DIAGRAMMATIC ONLY AND MAY REQUIRE ADDITIONAL SURVEY WHERE CRITICAL TO DESIGN.

CONTOURS ARE INDICATIVE AT GROUND FORM ONLY. SPOT LEVELS ONLY SHOULD BE USED FOR CALCULATIONS OF QUANTITIES WITH CAUTION.

LEVELS ARE ON AUSTRALIAN HEIGHT DATUM (AHD).

ALL SETOUT LEVELS MUST BE REFERRED TO THE BENCH MARK SHOWN ON THIS PLAN.

BOUNDARY NOTES

BOUNDARIES OF THE SITE HAVE BEEN IDENTIFIED BY SURVEY.

BOUNDARIES HAVE NOT BEEN MARKED.

SURVEY INFORMATION NOTES

THE ORIGIN OF COORDINATES COMES FROM SSM88206 E333954.228 N6269239.469 CLASS C POSITIONAL UNCERTAINTY (PU) N/A (MGA2020) ADOPTED FROM SCIMS DATED 08/06/2021.

THE ORIGIN OF LEVELS COMES FROM SSM75296 RL179.240 CLASS LC POSITIONAL UNCERTAINTY (PU) N/A ADOPTED FROM SCIMS DATED 08/06/2021.

THE ORIENTATION OF THIS PLAN IS MGA NORTH WHICH HAS BEEN DETERMINED BY A COORDINATE JOIN BETWEEN SSM88206 AND SSM75296.

CERTIFICATE OF TITLE NOTES

THE FOLLOWING INFORMATION RELATES TO THE RESPECTIVE CERTIFICATE OF TITLE OF EACH LOTS:

- LOT 502 IN DP875858 (CT EDITION 5 DATED 18/10/2019 SEARCH DATE 01/06/2021)
- AFFECTED BY:
 - RIGHT OF CARRIAGEWAY 4.0 WIDE (AE960449)
 - RESTRICTION ON THE USE OF LAND (DP265029, DP852750, DP875858 & 0897327)
 - COVENANT (DP89898 & DP265029)
- BENEFITED BY:
 - EASEMENT FOR ACCESS AND DRAINAGE AND WATER MANAGEMENT (DP807013)

COVENANTS AND RESTRICTIONS NOTED ON THE TITLE HAVE NOT BEEN INVESTIGATED. THESE SHOULD BE INVESTIGATED PRIOR TO DESIGN TO ENSURE ANY FUTURE DEVELOPMENT COMPLIES.

SERVICES NOTES

ONLY THOSE SERVICES VISIBLE AT THE TIME OF SURVEY HAVE BEEN LOCATED AND ARE QUALITY LEVEL A AS DEFINED BY AS 5488.1:2019.

UNDERGROUND SERVICES HAVE BEEN PLOTTED FROM 'DIAL-BEFORE-YOU-DIG' PLANS, ARE QUALITY LEVEL D AS DEFINED BY AS 5488.1:2019 AND ARE ONLY CURRENT AT THE DATE OF SEARCH.

ALL RELEVANT AUTHORITIES MUST BE CONTACTED TO DETERMINE THE FULL EXTENT OF SERVICES PRIOR TO ANY PLANNING OR WORKS NEAR THE SITE.

© COPYRIGHT

THIS PLAN IS NOT TO BE USED FOR ANY PURPOSE OTHER THAN ITS ORIGINAL INTENTION AND REMAINS THE PROPERTY OF SDG. THIS PLAN CANNOT BE REPRODUCED, COPIED OR DIGITALLY TRANSFERRED (IN WHOLE OR PART) WITHOUT PRIOR WRITTEN PERMISSION OF SDG.

PROJECT:

DETAIL AND LEVEL SURVEY OF
LOT 502 IN DP875858

4 MINNA CLOSE
BELROSE

CLIENT: WU PROPERTIES

FILE: 8484_4 Minna Close Belmore_Rev B

LGA: NORTHERN BEACHES

REF: 8484

CONTOURS: 0.5m

ISSUE: B

DATUM: AHD

SURVEY DATE: 01/07/2021

AZIMUTH: MGA2020

SCALE: 1:200

SHEET 2 OF 2 SHEETS