

Plan Form No. 1 (for Deposited Plan)

Municipality of **B498959**  
Shire of Warringah

**PLAN**

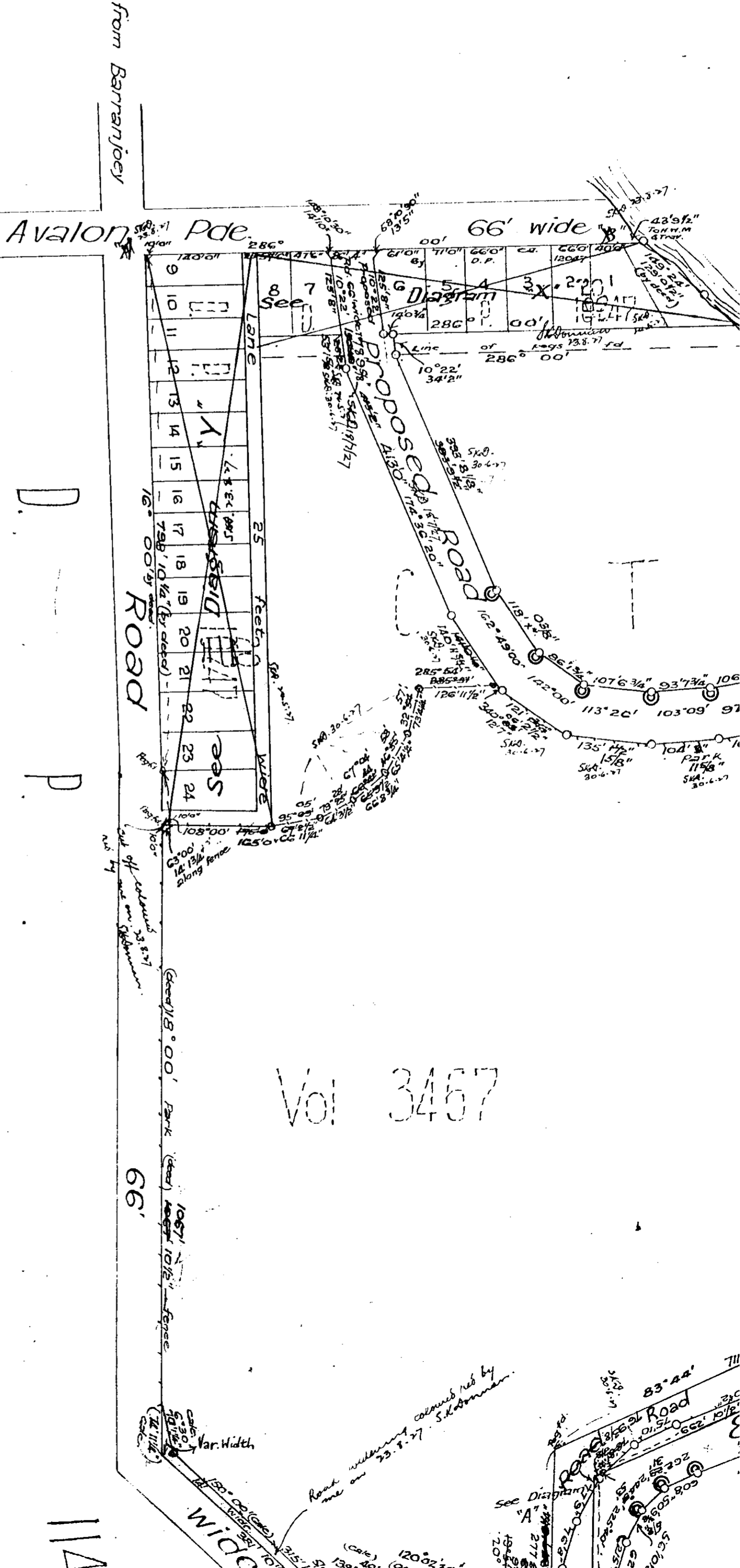
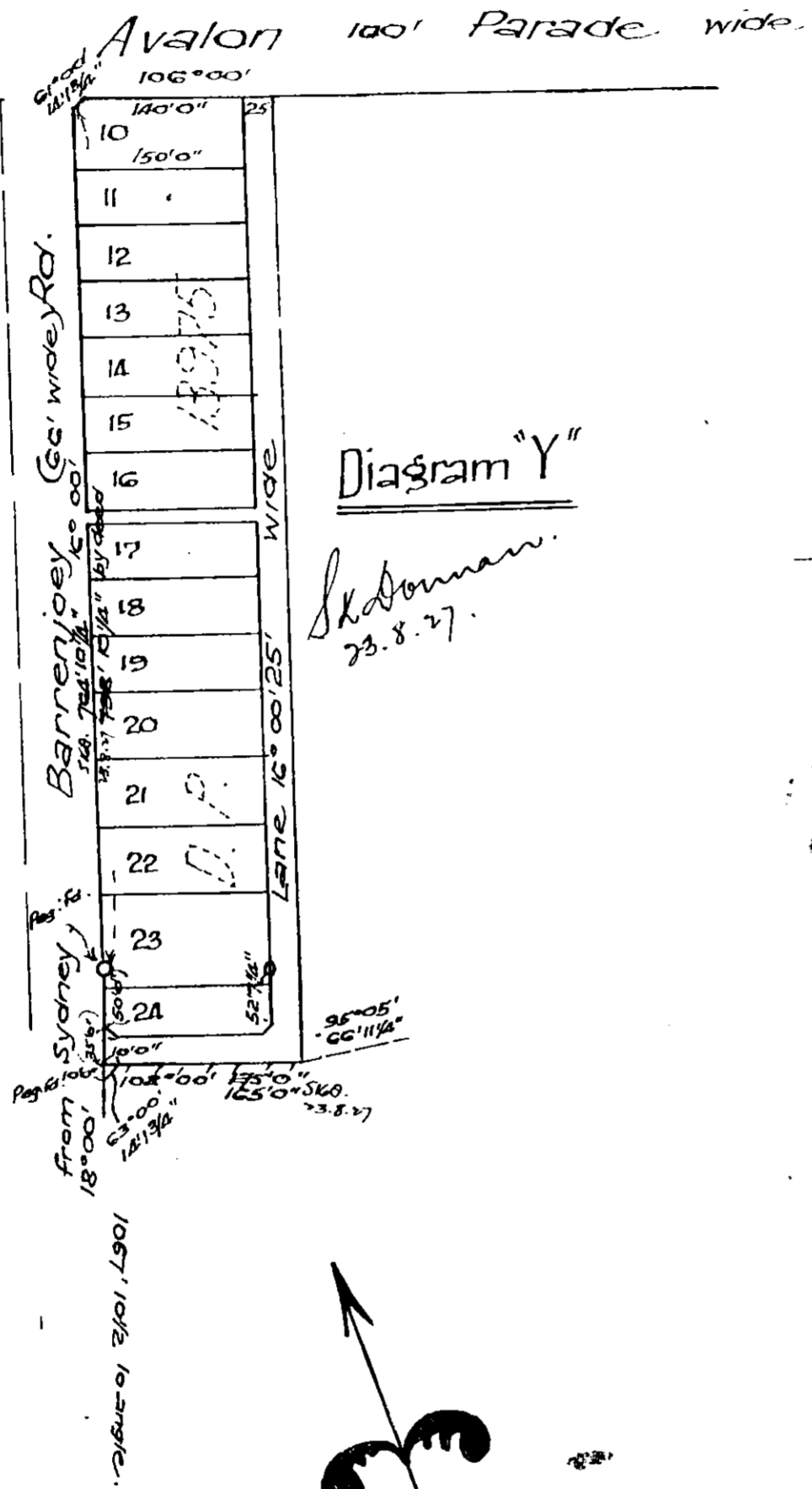
DP 319158 (E)

of land to be dedicated for Road purposes in C

**PARISH OF NARRABEEN**

**COUNTY OF NARRABEEN**

Scale **200'** to an



FP 319158(E)

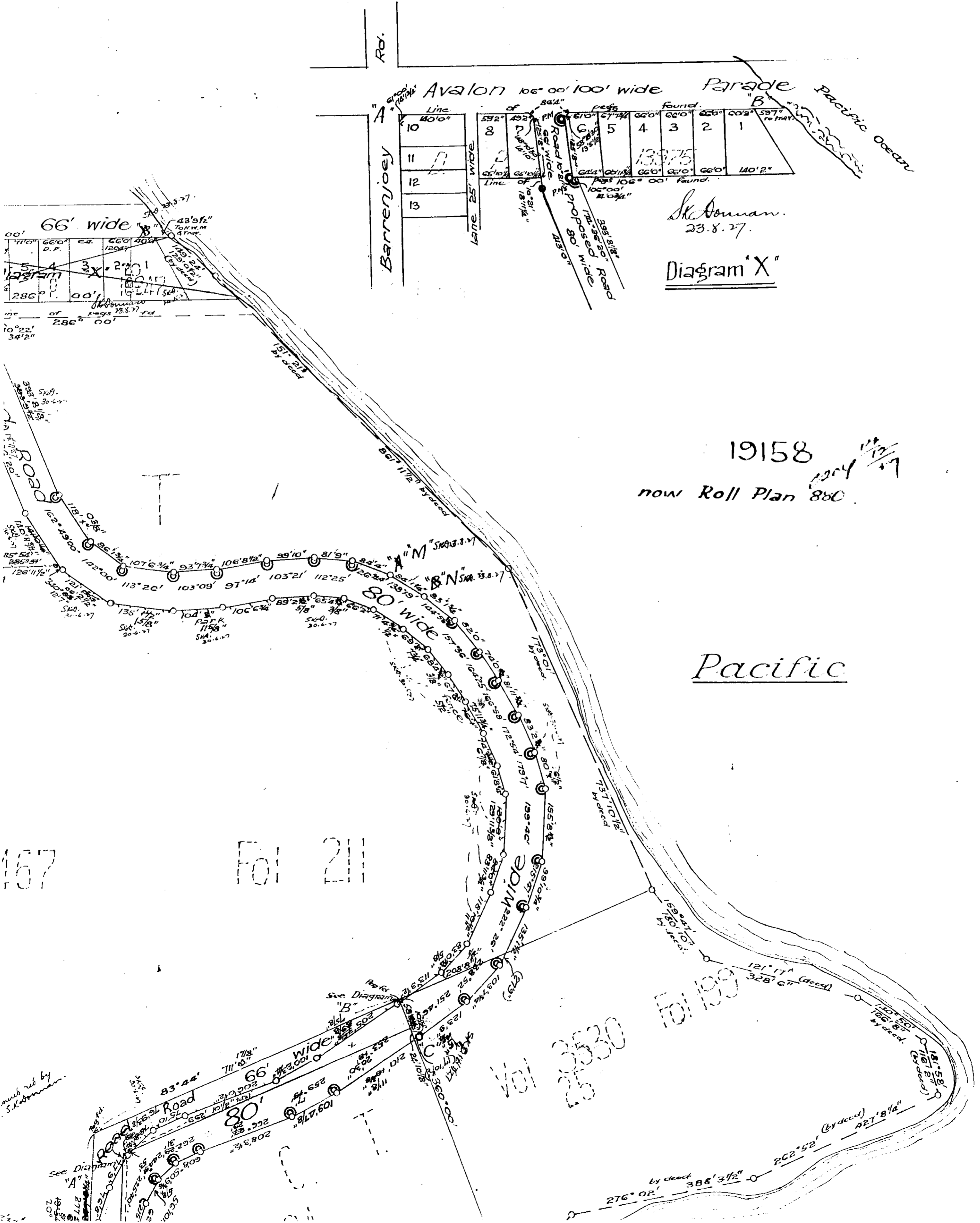
# PLAN

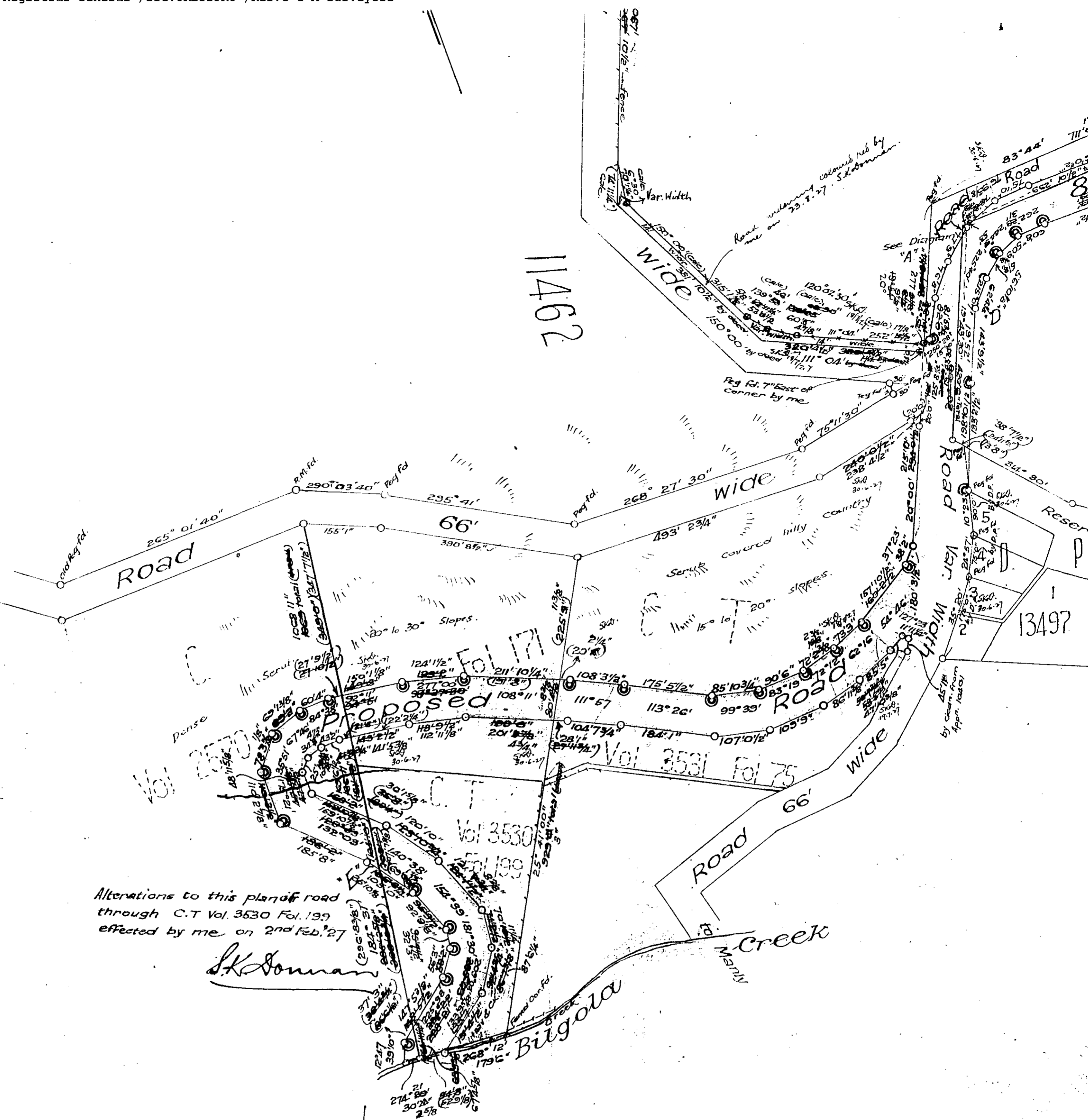
purposes in Certificates of Title

Vol 3530	Fol 199
Vol 3467	Fol. 211
Vol. 3414	99 214
99 3531	99 75
99 2570	99 171

# EN COUNTY OF CUMBERLAND

Scale 200' to an inch






Alterations to this plan of road  
through C.T Vol. 3530 Fol. 139  
effected by me on 2nd Feb. '27

*S.K. Donnan*

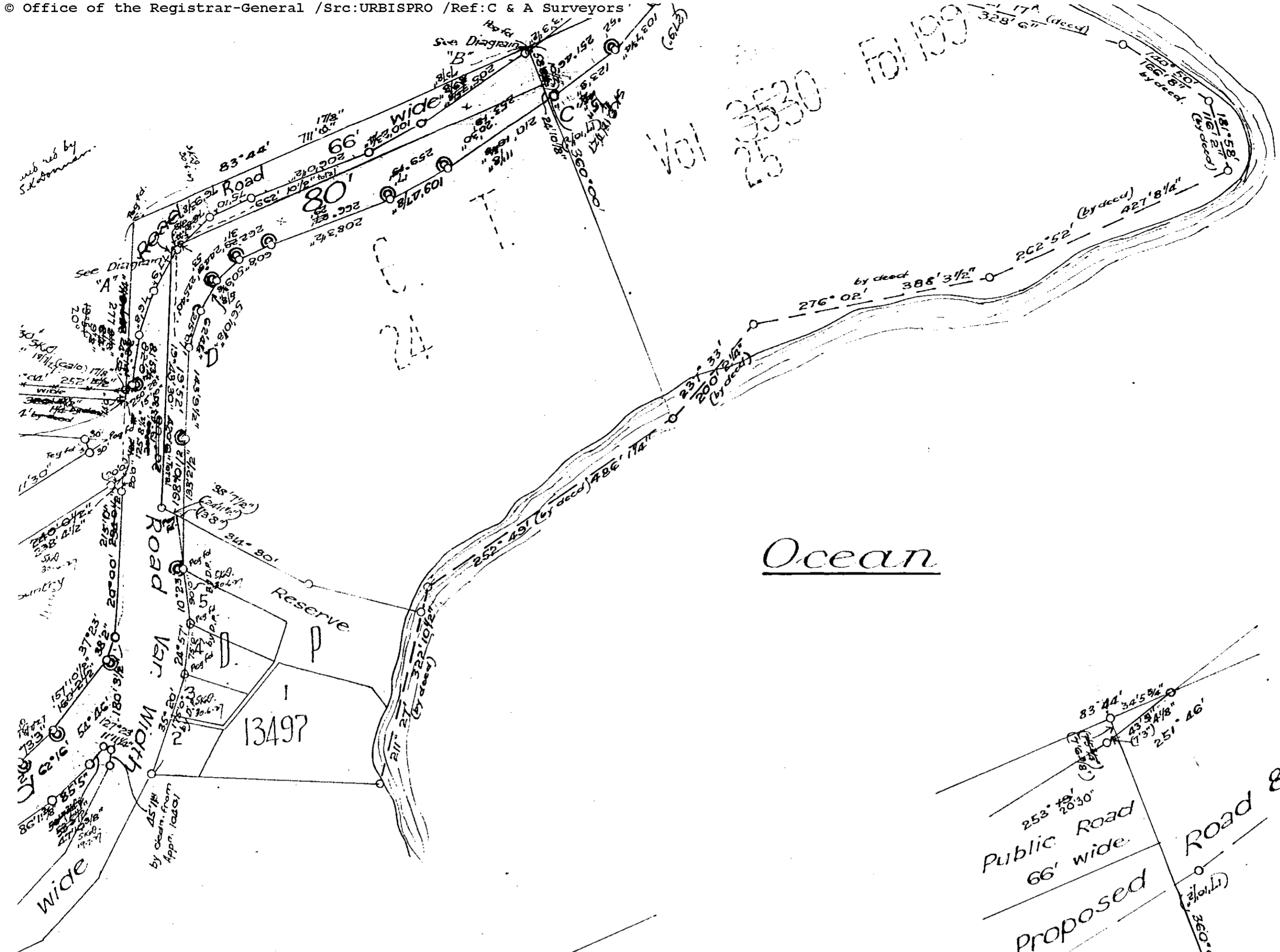
EP 319158

It is intended to dedicate the new road 80 feet wide  
the road widening 14 feet wide and variable in width  
and the cut off corner to the public

*R. W. Marks*  
*M. G. Mitchell*  
*Arthur J. Small*

Permanent Marks are Concrete Blocks and have been placed at angles and corners shown thus.   
also at angles marked 'A', 'B', 'C', 'D' and 'E'  
Datum line of Azimuth A-B.

D.P.319158E



Vol 2530 Fol 199

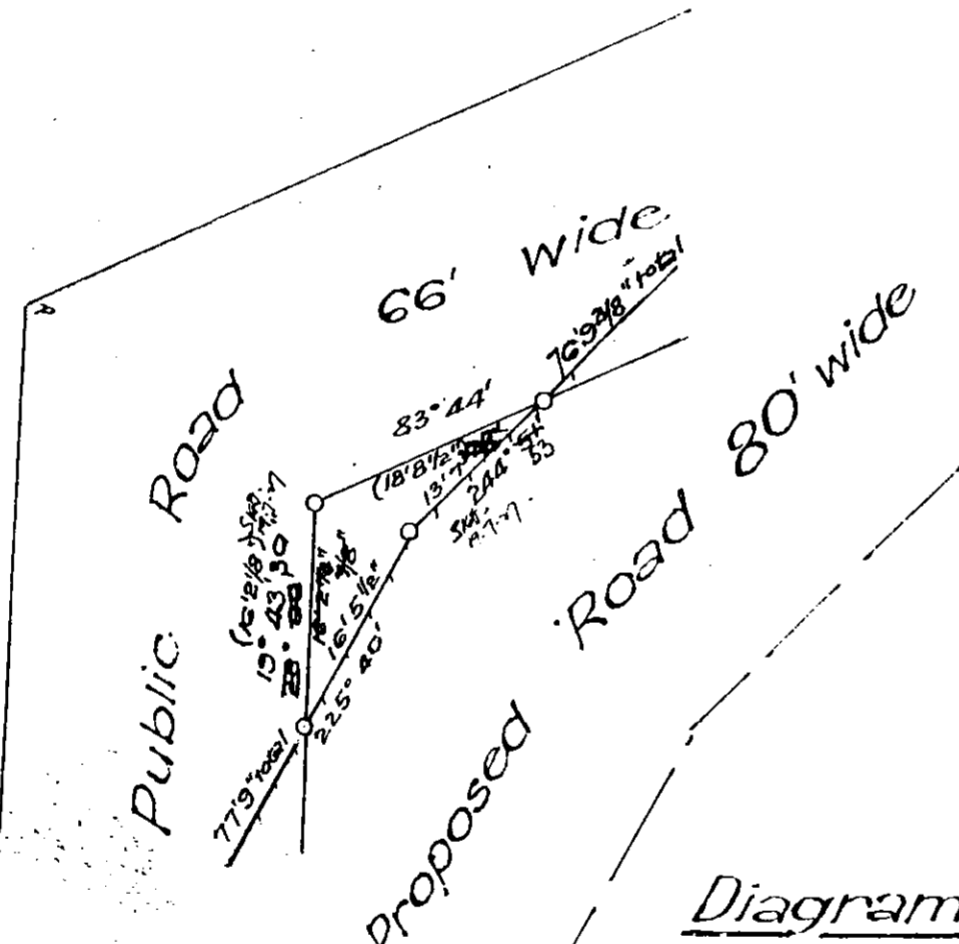
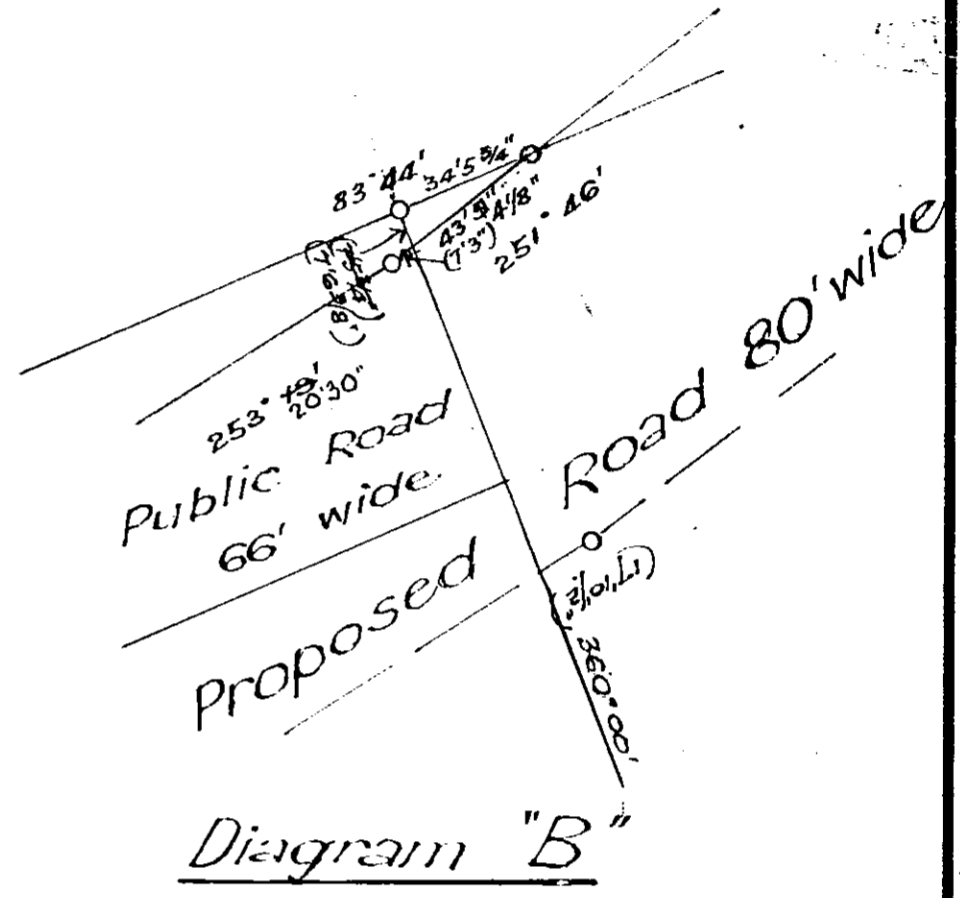


Diagram "A"

Diagram "B"

This plan is approved by the Warringah Shire Council, and the Seal of the said Council has been hereto affixed this Seventh day of April, 1927, in pursuance of a resolution passed on 4<sup>th</sup> April, 1927

*[Signature]*  
Shire Clerk  
Covered by Shire Clerk's Certificate No 798 of 7<sup>th</sup> April, 1927

*[Signature]*  
President

I Sydney Kenneth Dorman of 12/14 Loftus St. Sydney Licensed Surveyor specially licensed under the Real Property Act, 1900, do hereby solemnly and sincerely declare (a) that all boundaries and measurements shown on this plan are correct, (b) that all survey marks found and relevant physical objects on or adjacent to the boundaries are correctly represented, (c) that all physical objects indicated actually exist in the positions shown, (d) that the whole of the material facts in relation to the land are correctly represented, (e) that the survey has been made under my immediate supervision and I make this solemn declaration conscientiously believing the same to be true, and by virtue of the provisions of the Oaths Act, 1900.

*[Signature]*  
Licensed Surveyor.

DP 319158(E)

Subscribed and declared before me at Sydney this 1<sup>st</sup> day of June A.D. 1926

*[Signature]* J.P.

Date of Survey April, May '26

319158(E)

\*Add here by me or under my immediate supervision as the case may be.

CONVERSION TABLE ADDED IN DEPARTMENT OF LANDS		
FEET INCHES	METRES	DP 319158
0 3/8	0.010	43
0 1/2	0.013	43
0 3/4	0.032	43
1 1/4	0.067	43
2 5/8	0.127	43
5 1/2	0.140	43
7 3/4	0.178	43
1 1/2	0.197	43
1 1/2	0.953	43
1 1/2	1.041	43
1 1/2	1.168	43
1 1/2	1.219	43
1 1/4	1.524	43
1 1/4	2.038	43
1 1/4	2.134	43
3 3/8	2.210	43
6 3/8	2.296	43
7 3/8	2.321	43
9	2.362	43
1 3/4	2.438	43
3 1/2	2.483	43
5 1/2	2.527	43
5 5/8	2.565	43
9 5/8	2.683	43
0 5/8	2.759	43
5 1/2	3.048	43
8 1/4	3.251	43
11 1/4	3.639	43
5 1/2	3.835	43
7 7/8	4.089	43
5 1/2	4.102	43
7 7/8	4.140	43
8	4.166	43
7 7/8	4.267	43
8	4.286	43
0 3/4	4.312	43
1 3/4	4.521	43
1 3/4	4.870	43
1 3/4	4.931	43
2 1/8	4.931	43
5 1/2	5.017	43
2 1/4	5.448	43
2 3/4	5.702	43
1 1/2	5.772	43
1 1/4	6.096	43
1 1/4	6.153	43
2 3/4	6.166	43
2 3/4	6.553	43
1 1/2	7.277	43
1 1/2	7.315	43
1 1/2	7.353	43
1 1/8	7.572	43
1 1/2	7.572	43
1 1/2	7.607	43
8	7.620	43
5 1/8	7.823	43
5 1/8	7.890	43
8 2/30	8.230	43
8 4/58	8.458	43
9 1/2	8.471	43
8 5/34	8.534	43
8 5/60	8.560	43
9 1/44	9.144	43
9 8/30	9.830	43
10 4/14	10.414	43
10 5/9	10.509	43
10 6/68	10.668	43
11 5/8	11.014	43
1 5/8	11.354	43
1 5/8	11.582	43
1 1/2	11.633	43
1 1/2	11.773	43
1 1/2	12.141	43
1 1/8	12.192	43
1 1/8	12.497	43
1 1/8	13.106	43
1 1/8	13.211	43
1 1/2	13.237	43
1 1/2	13.348	43

CONVERSION TABLE ADDED IN DEPARTMENT OF LANDS		
FEET INCHES	METRES	DP 319158 CONTINUED
46	14.021	86
47	14.326	86
47	14.335	86
47	14.478	86
6	18.589	86
10 3/8	14.589	86
11 5/8	14.926	86
11 3/4	14.929	86
2	14.986	86
2	15.240	86
9 5/8	15.484	86
9 1/8	16.081	86
1 1/8	16.154	86
0 1/2	16.167	86
1 5/8	16.196	86
1 1/8	17.326	86
1 1/8	17.326	86
6	17.374	86
6	17.526	86
6	17.678	86
10 1/2	17.945	86
1 1/2	18.034	86
2	18.161	86
7 7/8	18.339	86
2	18.386	86
3 7/8	18.390	86
4 7/8	18.412	86
4 7/8	18.491	86
1 1/4	19.006	86
1 1/4	19.609	86
4 3/8	19.923	86
4 3/8	20.072	86
1 1/4	20.117	86
2	20.168	86
8 3/4	20.339	86
1 1/4	20.403	86
1 1/2	20.561	86
7 3/4	20.618	86
4 3/8	20.828	86
4 3/8	20.838	86
1 3/8	21.066	86
1 3/4	21.228	86
1 1/4	21.368	86
1 1/4	21.622	86
1 1/2	21.641	86
4 1/2	21.755	86
4 3/4	21.761	86
2 3/8	22.006	86
2 3/8	22.327	86
3 4 1/4	22.358	86
4 1/4	22.555	86
6 7/8	22.730	86
11 1/4	22.841	86
11 1/4	22.860	86
11 3/4	23.114	86
11 3/4	23.158	86
8 3/8	23.368	86
9 3/8	23.403	86
9 3/8	23.698	86
1 1/8	23.803	86
3 1/8	24.384	86
6 1/2	24.549	86
9	24.917	86
11	24.968	86
5/8	25.314	86
1 3/4	25.343	86
1 3/4	25.397	86
1 3/4	25.635	86
1 1/4	25.705	86
5 3/4	26.035	86
10 3/4	26.181	86
1 3/4	26.257	86

CONVERSION TABLE ADDED IN DEPARTMENT OF LANDS		
FEET INCHES	METRES	DP 319158 CONTINUED
4	26.314	206
11 3/8	26.502	206
6 1/4	26.676	206
2 5/8	27.194	206
6	27.432	206
6	27.584	206
7 3/4	28.543	206
10 3/4	30.448	206
2 3/4	30.480	206
2 3/4	30.550	206
7 3/4	31.591	206
7 3/4	31.896	206
1 1/2	31.994	206
1 1/2	32.480	206
6 3/4	32.525	206
1 1/2	32.626	206
0 1/2	32.785	206
6 3/4	33.007	206
3 1/2	33.042	206
4 7/8	33.322	206
7/8	33.347	206
4 7/8	33.452	206
9	34.420	206
7/8	34.601	206
1 1/8	34.620	206
1 1/2	34.531	206
3 1/8	35.408	206
0 3/8	35.976	206
11 8	36.246	206
5 5/8	36.719	206
5 5/8	36.830	206
2 1/2	37.094	206
2 1/2	37.243	206
1 1/4	37.567	206
1 1/2	37.833	206
8	38.303	206
11 1/2	38.697	206
0 1/2	39.038	206
1 1/2	39.608	206
11 3/8	40.234	206
2 1/2	40.602	206
9 1/2	40.780	206
9 5/8	40.783	206
1 1/2	41.186	206
1 5/8	41.189	206
10 1/8	41.405	206
1 1/2	42.672	206
1 1/2	42.723	206
11 3/4	42.970	206
5 3/8	43.113	206
9 1/2	43.828	206
1 1/2	44.942	206
5 3/8	45.415	206
1 1/8	45.720	206
1 1/8	45.749	206
1 1/8	46.076	206
1 1/8	47.269	206
1 1/2	47.447	206
8 1/2	47.460	206
10 1/2	48.120	206
10 1/2	48.739	206
10 7/8	50.292	206
8	50.800	206
5 1/2	53.340	206
5 1/2	53.480	206
3 1/2	54.953	206
1 1/2	55.118	206
1 1/2	56.109	206
3	56.159	206
8	56.591	206
10 1/2	60.617	206
1 1/4	61.017	206
4 3/4	61.385	206
7 5/8	62.484	206
1 1/2	62.678	206
1 1/2	62.802	206

CONVERSION TABLE ADDED IN DEPARTMENT OF LANDS		
FEET INCHES	METRES	DP 319158 CONTINUED
3 1/2	63.487	1068
8 1/2	63.614	1068
1 1/8	64.291	1068
1 1/4	64.573	1068
1 1/4	65.786	1068
1 1/4	66.700	1068
3 8	68.869	1068
1 1/2	73.495	1068
1 7/8	74.857	1068
8 3/8	84.430	1068
3 1/8	90.434	1068
1 5/8	96.053	1068
1 1/2	97.650	1068
1 1/2	98.412	1068
1 1/2	100.127	1068
7 1/2	105.956	1068
1 1/2	116.396	1068
1 1/2	118.351	1068
1 1/2	119.088	1068
8 1/8	119.993	1068
1 1/8	125.882	1068
6	128.168	1068
1 1/4	130.359	1068
1 1/4	148.165	1068
2 3/4	150.336	1068
1 1/2	202.044	1068
1 1/2	216.760	1068
1 1/2	224.904	1068
1 1/2	233.128	1068
1 1/4	243.491	1068
1 1/2	262.725	1068
1 1/2	283.235	1068
10 1/2	325.488	1068
11	325.806	1068