



Printed 23/05/2024



| ISSUE | REVISIONS                   | DATE     |
|-------|-----------------------------|----------|
| H     | S4.55                       | 23.05.24 |
| G     | S4.55                       | 31.10.23 |
| F     | FOR CONCILIATION CONFERENCE | 01.03.23 |
| E     | FOR CONCILIATION CONFERENCE | 24.02.23 |
| D     | S82A REVIEW                 | 01.11.21 |

PROJECT:

**MIXED USE AND SENIORS LIVING DEVELOPMENT**  
 5 Skyline Place Frenchs Forest NSW 2086  
 SP 49558

**COVER PAGE**

**PA STUDIO**

LEVEL 2, 20 YOUNG ST. NEUTRAL BAY, NSW 2089  
TEL: 8968 1900 FAX: 8968 1999 ACN: 603 389 288

NOMINATED ARCHITECT: GEORGE REVAY-REG#3954

|           |          |         |              |
|-----------|----------|---------|--------------|
| SCALE:    | AS SHOWN | DRAWING | <b>DA000</b> |
| SUBSET:   | DA       | ISSUE   |              |
| DRAWN BY: | SU/WH/SP |         |              |

FILE: BIM Server: BIM21 - BIMcloud Basic for ARCHICAD 21/SKY5 (LOT1)\_Section 455

# 5 SKYLINE PLACE

## S4.55

| D. No. | NAME                                   | REV | DATE     |
|--------|--|-----|----------|
| DA000  | COVER PAGE                             | H   | 23.05.24 |
| DA001  | DRAWING LIST                           | H   | 23.05.24 |
| DA101  | SITE PLAN                              | H   | 23.05.24 |
| DA201  | LOWER BASEMENT CARPARK                 | H   | 23.05.24 |
| DA202  | BASEMENT CARPARK                       | H   | 23.05.24 |
| DA203  | GROUND FLOOR PLAN                      | H   | 23.05.24 |
| DA204  | LEVEL 1 FLOOR PLAN                     | H   | 23.05.24 |
| DA205  | LEVEL 2 FLOOR PLAN                     | H   | 23.05.24 |
| DA206  | LEVEL 3 FLOOR PLAN                     | H   | 23.05.24 |
| DA207  | LEVEL 4 FLOOR PLAN                     | H   | 23.05.24 |
| DA208  | LEVEL 5 FLOOR PLAN                     | H   | 23.05.24 |
| DA209  | LEVEL 6 FLOOR PLAN                     | H   | 23.05.24 |
| DA210  | LEVEL 7 FLOOR PLAN                     | H   | 23.05.24 |
| DA211  | ROOF PLAN                              | H   | 23.05.24 |
| DA301  | SECTIONS S1 & S2                       | H   | 23.05.24 |
| DA302  | SECTIONS S3 & S4                       | H   | 23.05.24 |
| DA303  | SECTION S5                             | H   | 23.05.24 |
| DA401  | EAST ELEVATION                         | H   | 23.05.24 |
| DA402  | NORTH ELEVATION                        | H   | 23.05.24 |
| DA403  | WEST ELEVATION                         | H   | 23.05.24 |
| DA404  | SOUTH ELEVATION                        | H   | 23.05.24 |
| DA801  | SHADOW DIAGRAMS - JUNE 21 - MID WINTER | H   | 23.05.24 |



Printed 23/05/2024

|       |                             |          |
|-------|-----------------------------|----------|
| H     | S4.55                       | 23.05.24 |
| G     | S4.55                       | 31.10.23 |
| F     | FOR CONCILIATION CONFERENCE | 01.03.23 |
| E     | FOR CONCILIATION CONFERENCE | 24.02.23 |
| D     | S82A REVIEW                 | 01.11.21 |
| ISSUE | REVISIONS                   | DATE     |

PROJECT:

**MIXED USE AND SENIORS LIVING DEVELOPMENT**  
**5 Skyline Place Frenchs Forest NSW 2086**  
**SP 49558**

## DRAWING LIST

**PA STUDIO**

LEVEL 2, 20 YOUNG ST., NEUTRAL BAY, NSW 2089  
 TEL: 8968 1900 FAX: 8968 1999 ACN: 603 389 288

NOMINATED ARCHITECT: GEORGE REVAY-REG#3954

|                    |                |
|--------------------|----------------|
| SCALE: AS SHOWN    | DRAWING        |
| SUBSET: DA         | <b>DA001</b>   |
| DRAWN BY: SU/WH/SP | ISSUE <b>H</b> |



BUS STOP

LOT AREA  
4,760 m<sup>2</sup>

SKYLINE PLACE



| ISSUE | REVISIONS                   | DATE     |
|-------|-----------------------------|----------|
| H     | S4.55                       | 23.05.24 |
| G     | S4.55                       | 31.10.23 |
| F     | FOR CONCILIATION CONFERENCE | 01.03.23 |
| E     | FOR CONCILIATION CONFERENCE | 24.02.23 |
| D     | S82A REVIEW                 | 01.11.21 |

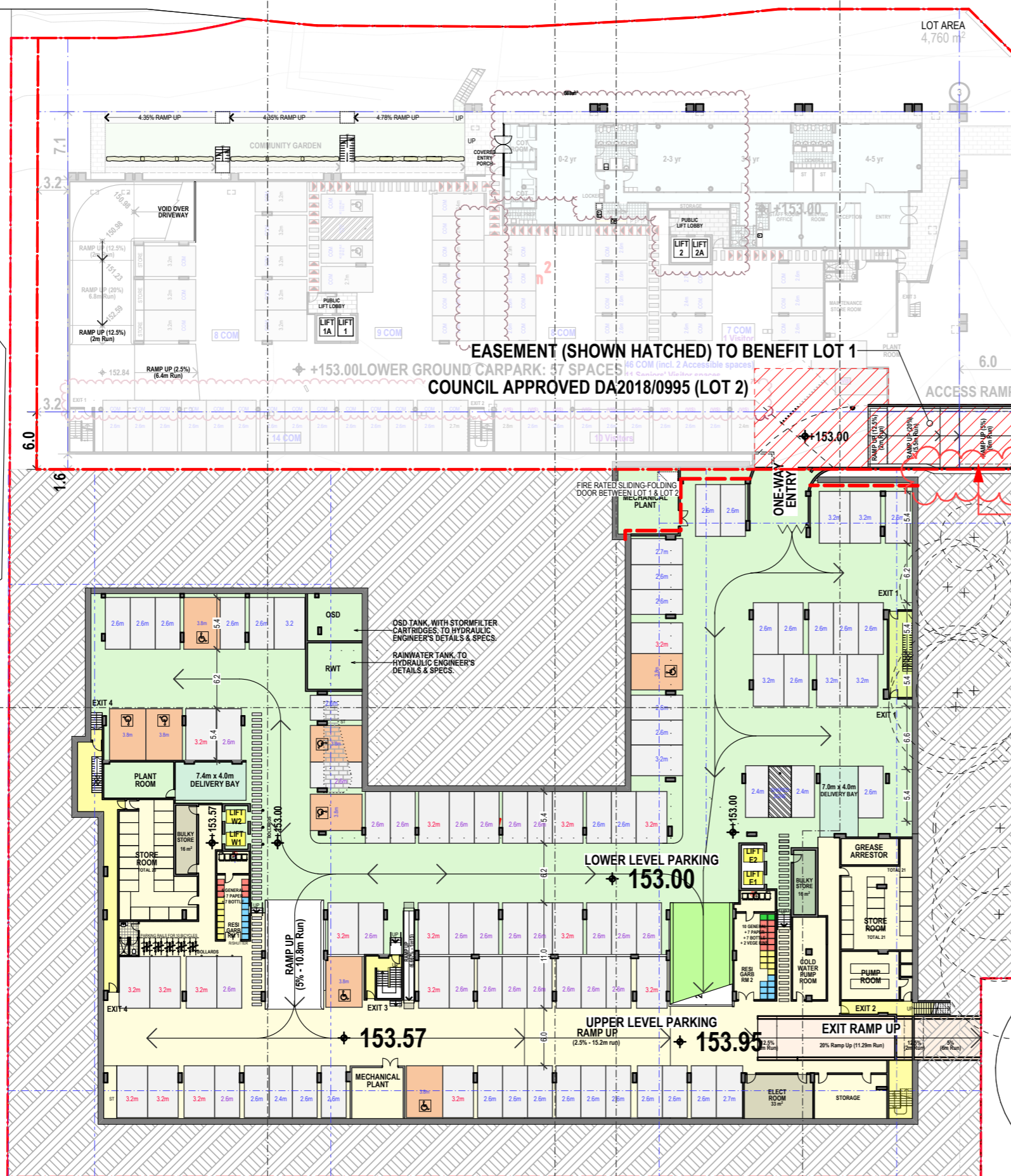
PROJECT:  
**MIXED USE AND SENIORS LIVING DEVELOPMENT**  
 5 Skyline Place Frenchs Forest NSW 2086  
 SP 49558

**LOWER BASEMENT CARPARK**

**PA STUDIO**  
 LEVEL 2, 20 YOUNG ST. NEUTRAL BAY, NSW 2089  
 TEL: 8968 1900 FAX: 8968 1999 ACN: 603 389 288

NOMINATED ARCHITECT: GEORGE REVAY-REG#3954

|                    |                         |
|--------------------|-------------------------|
| SCALE: AS SHOWN    | DRAWING<br><b>DA201</b> |
| SUBSET: PLANS      |                         |
| DRAWN BY: SU/WH/SP | ISSUE<br>H              |



SKYLINE PLACE

LOT AREA  
4,760 m<sup>2</sup>

EASEMENT (SHOWN HATCHED) TO BENEFIT LOT 1  
COUNCIL APPROVED DA2018/0995 (LOT 2)

WIDENING OF RAMP

| ISSUE | REVISIONS                   | DATE     |
|-------|-----------------------------|----------|
| H     | S4.55                       | 23.05.24 |
| G     | S4.55                       | 31.10.23 |
| F     | FOR CONCILIATION CONFERENCE | 01.03.23 |
| E     | FOR CONCILIATION CONFERENCE | 24.02.23 |
| D     | S82A REVIEW                 | 01.11.21 |

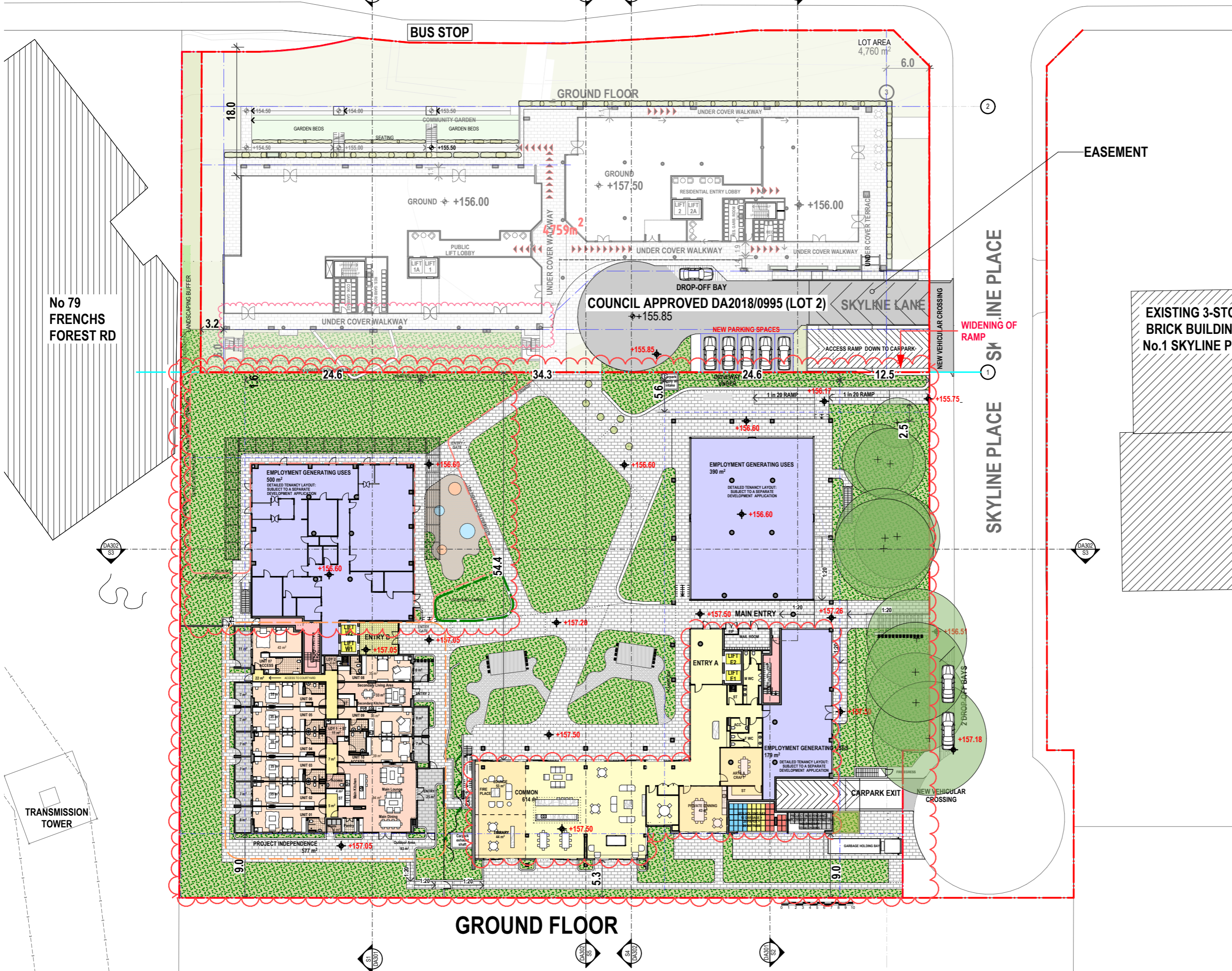
PROJECT:  
**MIXED USE AND SENIORS LIVING DEVELOPMENT**  
5 Skyline Place Frenchs Forest NSW 2086  
SP 49558

**BASEMENT CARPARK**

**PA STUDIO**  
LEVEL 2, 20 YOUNG ST. NEUTRAL BAY, NSW 2089  
TEL: 8968 1900 FAX: 8968 1999 ACN: 603 389 288

NOMINATED ARCHITECT: GEORGE REVAY-REG#3954

|                    |              |
|--------------------|--------------|
| SCALE: AS SHOWN    | DRAWING      |
| SUBSET: PLANS      | <b>DA202</b> |
| DRAWN BY: SU/WH/SP | ISSUE        |
|                    | <b>H</b>     |



GROUND FLOOR

| ISSUE | REVISIONS                   | DATE     |
|-------|-----------------------------|----------|
| H     | S4.55                       | 23.05.24 |
| G     | S4.55                       | 31.10.23 |
| F     | FOR CONCILIATION CONFERENCE | 01.03.23 |
| E     | FOR CONCILIATION CONFERENCE | 24.02.23 |
| D     | S82A REVIEW                 | 01.11.21 |

PROJECT:  
**MIXED USE AND SENIORS LIVING DEVELOPMENT**  
 5 Skyline Place Frenchs Forest NSW 2086  
 SP 49558

**GROUND FLOOR PLAN**

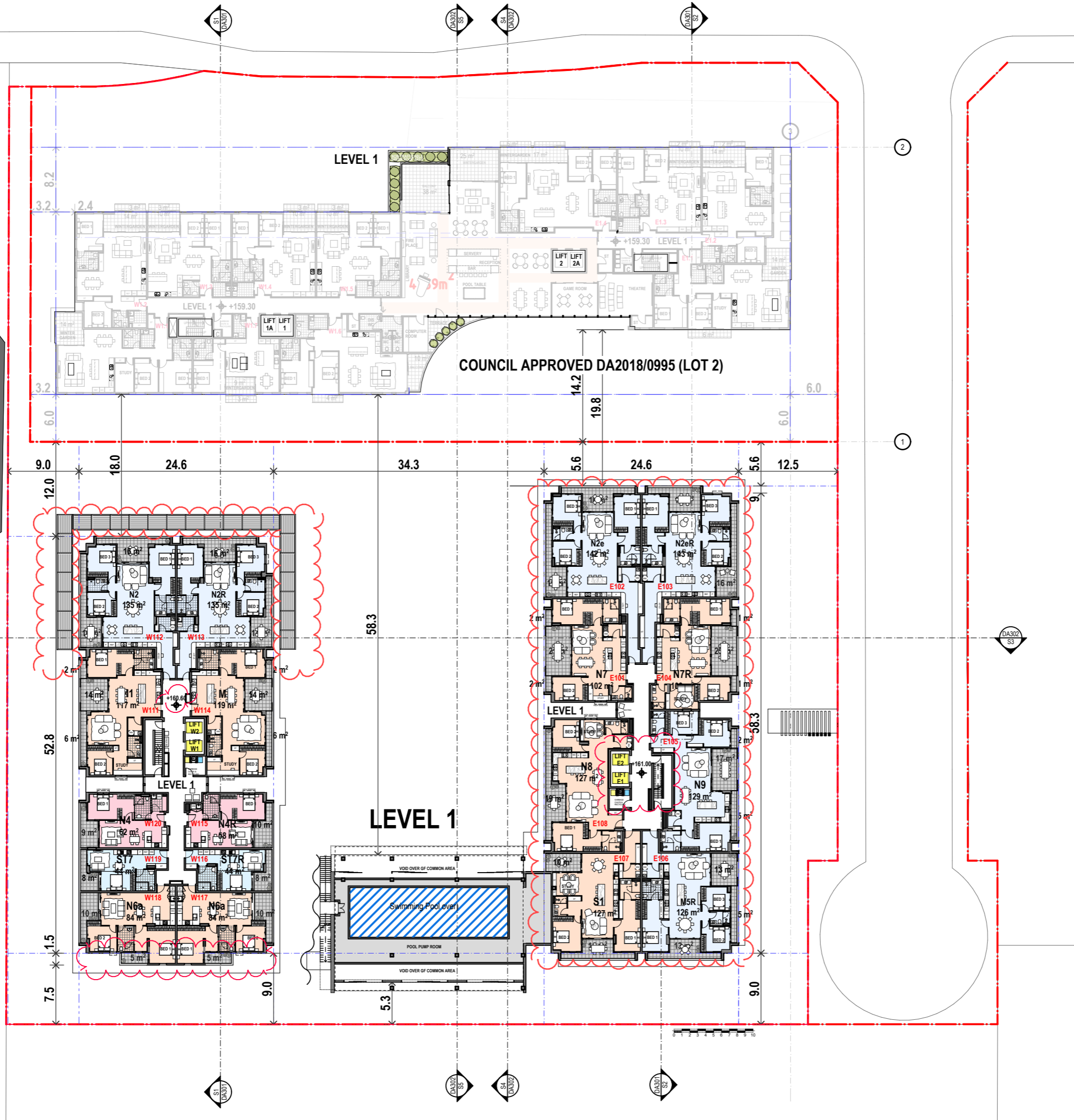
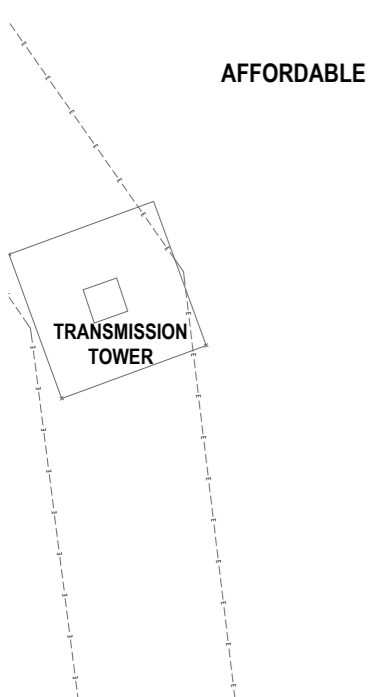
**PA STUDIO**  
 LEVEL 2, 20 YOUNG ST, NEUTRAL BAY, NSW 2089  
 TEL: 8968 1900 FAX: 8968 1999 ACN: 603 389 288

NOMINATED ARCHITECT: GEORGE REVAY-REG#3954

|                    |              |
|--------------------|--------------|
| SCALE: AS SHOWN    | DRAWING      |
| SUBSET: PLANS      | <b>DA203</b> |
| DRAWN BY: SU/WH/SP | ISSUE        |
|                    | <b>H</b>     |



Printed 23/05/2024



AFFORDABLE

COUNCIL APPROVED DA2018/0995 (LOT 2)

LEVEL 1

| ISSUE | REVISIONS                   | DATE     |
|-------|-----------------------------|----------|
| H     | S4.55                       | 23.05.24 |
| G     | S4.55                       | 31.10.23 |
| F     | FOR CONCILIATION CONFERENCE | 01.03.23 |
| E     | FOR CONCILIATION CONFERENCE | 24.02.23 |
| D     | S82A REVIEW                 | 01.11.21 |

PROJECT:  
**MIXED USE AND SENIORS LIVING DEVELOPMENT**  
 5 Skyline Place Frenchs Forest NSW 2086  
 SP 49558

### LEVEL 1 FLOOR PLAN

**PA STUDIO**  
 LEVEL 2, 20 YOUNG ST., NEUTRAL BAY, NSW 2089  
 TEL: 8968 1900 FAX: 8968 1999 ACN: 603 389 288

NOMINATED ARCHITECT: GEORGE REVAY-REG#3954

|                    |                         |
|--------------------|-------------------------|
| SCALE: AS SHOWN    | DRAWING<br><b>DA204</b> |
| SUBSET: PLANS      |                         |
| DRAWN BY: SU/WH/SP | ISSUE<br>H              |



Printed 23/05/2024



No 79 FRENCHS FOREST RD

COUNCIL APPROVED DA2018/0995 (LOT 2)

| ISSUE | REVISIONS                   | DATE     |
|-------|-----------------------------|----------|
| H     | S4.55                       | 23.05.24 |
| G     | S4.55                       | 31.10.23 |
| F     | FOR CONCILIATION CONFERENCE | 01.03.23 |
| E     | FOR CONCILIATION CONFERENCE | 24.02.23 |
| D     | S82A REVIEW                 | 01.11.21 |

PROJECT:  
**MIXED USE AND SENIORS LIVING DEVELOPMENT**  
 5 Skyline Place Frenchs Forest NSW 2086  
 SP 49558

### LEVEL 2 FLOOR PLAN

## PA STUDIO

LEVEL 2, 20 YOUNG ST., NEUTRAL BAY, NSW 2089  
TEL: 8968 1900 FAX: 8968 1999 ACN: 603 389 288

NOMINATED ARCHITECT: GEORGE REVAY-REG#3954

|                    |                         |
|--------------------|-------------------------|
| SCALE: AS SHOWN    | DRAWING<br><b>DA205</b> |
| SUBSET: PLANS      |                         |
| DRAWN BY: SU/WH/SP | ISSUE<br>H              |



| ISSUE | REVISIONS                   | DATE     |
|-------|-----------------------------|----------|
| H     | S4.55                       | 23.05.24 |
| G     | S4.55                       | 31.10.23 |
| F     | FOR CONCILIATION CONFERENCE | 01.03.23 |
| E     | FOR CONCILIATION CONFERENCE | 24.02.23 |
| D     | S82A REVIEW                 | 01.11.21 |

PROJECT:  
**MIXED USE AND SENIORS LIVING DEVELOPMENT**  
 5 Skyline Place Frenchs Forest NSW 2086  
 SP 49558

**LEVEL 3 FLOOR PLAN**

**PA STUDIO**  
 LEVEL 2, 20 YOUNG ST., NEUTRAL BAY, NSW 2089  
 TEL: 8968 1900 FAX: 8968 1999 ACN: 603 389 288

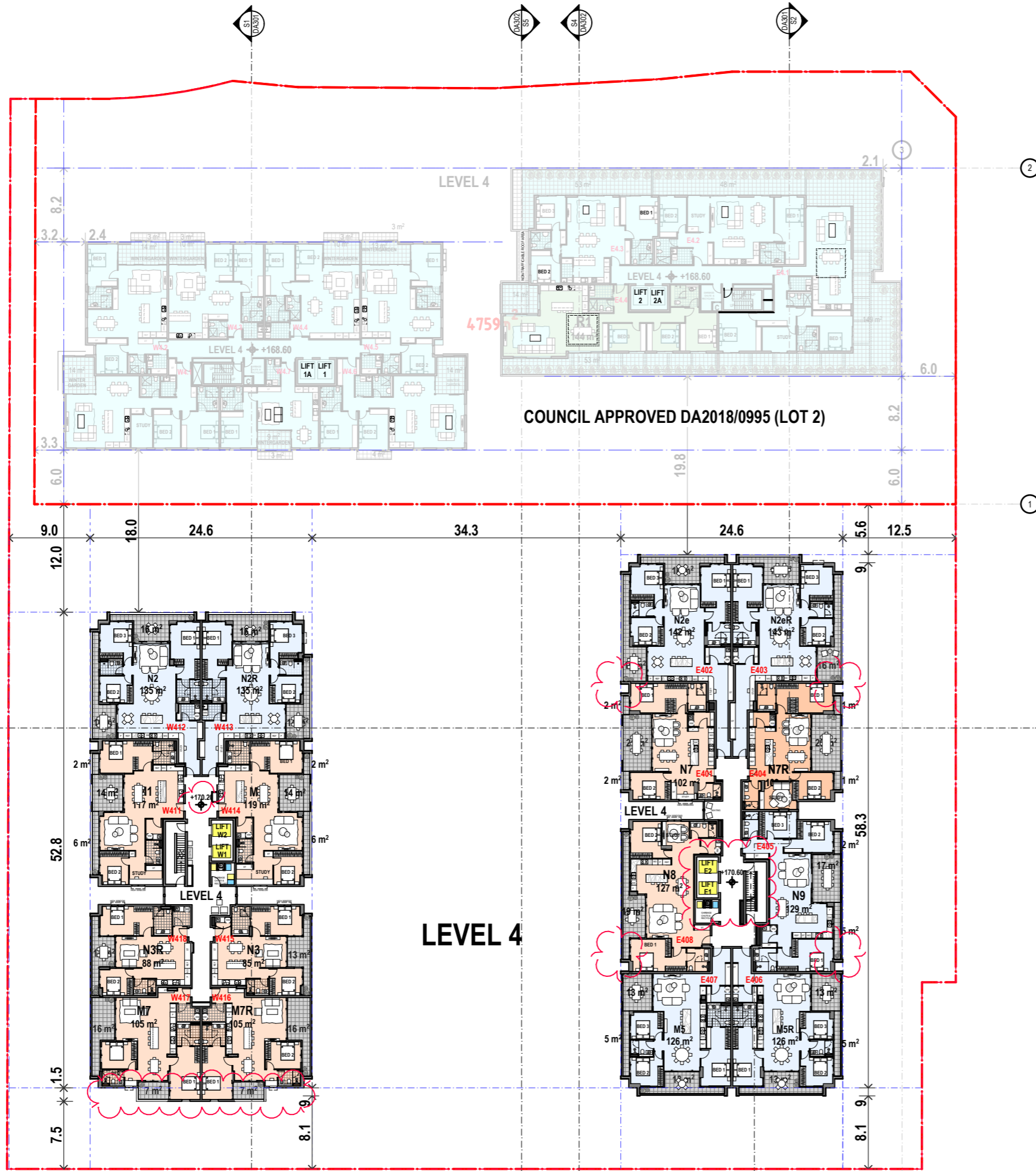
NOMINATED ARCHITECT: GEORGE REVAY-REG#3954

|                    |                         |
|--------------------|-------------------------|
| SCALE: AS SHOWN    | DRAWING<br><b>DA206</b> |
| SUBSET: PLANS      |                         |
| DRAWN BY: SU/WH/SP | ISSUE<br>H              |





Printed 23/05/2024



LEVEL 4

| ISSUE | REVISIONS                   | DATE     |
|-------|-----------------------------|----------|
| H     | S4.55                       | 23.05.24 |
| G     | S4.55                       | 31.10.23 |
| F     | FOR CONCILIATION CONFERENCE | 01.03.23 |
| E     | FOR CONCILIATION CONFERENCE | 24.02.23 |
| D     | S82A REVIEW                 | 01.11.21 |

PROJECT:  
**MIXED USE AND SENIORS LIVING DEVELOPMENT**  
 5 Skyline Place Frenchs Forest NSW 2086  
 SP 49558

**LEVEL 4 FLOOR PLAN**

**PA STUDIO**  
 LEVEL 2, 20 YOUNG ST., NEUTRAL BAY, NSW 2089  
 TEL: 8968 1900 FAX: 8968 1999 ACN: 603 389 288

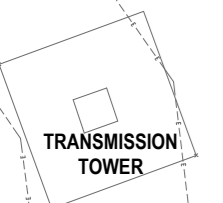
NOMINATED ARCHITECT: GEORGE REVAY-REG#3954

|                    |                         |
|--------------------|-------------------------|
| SCALE: AS SHOWN    | DRAWING<br><b>DA207</b> |
| SUBSET: PLANS      |                         |
| DRAWN BY: SU/WH/SP | ISSUE<br><b>D</b>       |



COUNCIL APPROVED DA2018/0995 (LOT 2)

LEVEL 5



| ISSUE | REVISIONS                   | DATE     |
|-------|-----------------------------|----------|
| H     | S4.55                       | 23.05.24 |
| G     | S4.55                       | 31.10.23 |
| F     | FOR CONCILIATION CONFERENCE | 01.03.23 |
| E     | FOR CONCILIATION CONFERENCE | 24.02.23 |
| D     | S82A REVIEW                 | 01.11.21 |

PROJECT:  
**MIXED USE AND SENIORS LIVING DEVELOPMENT**  
 5 Skyline Place Frenchs Forest NSW 2086  
 SP 49558

### LEVEL 5 FLOOR PLAN

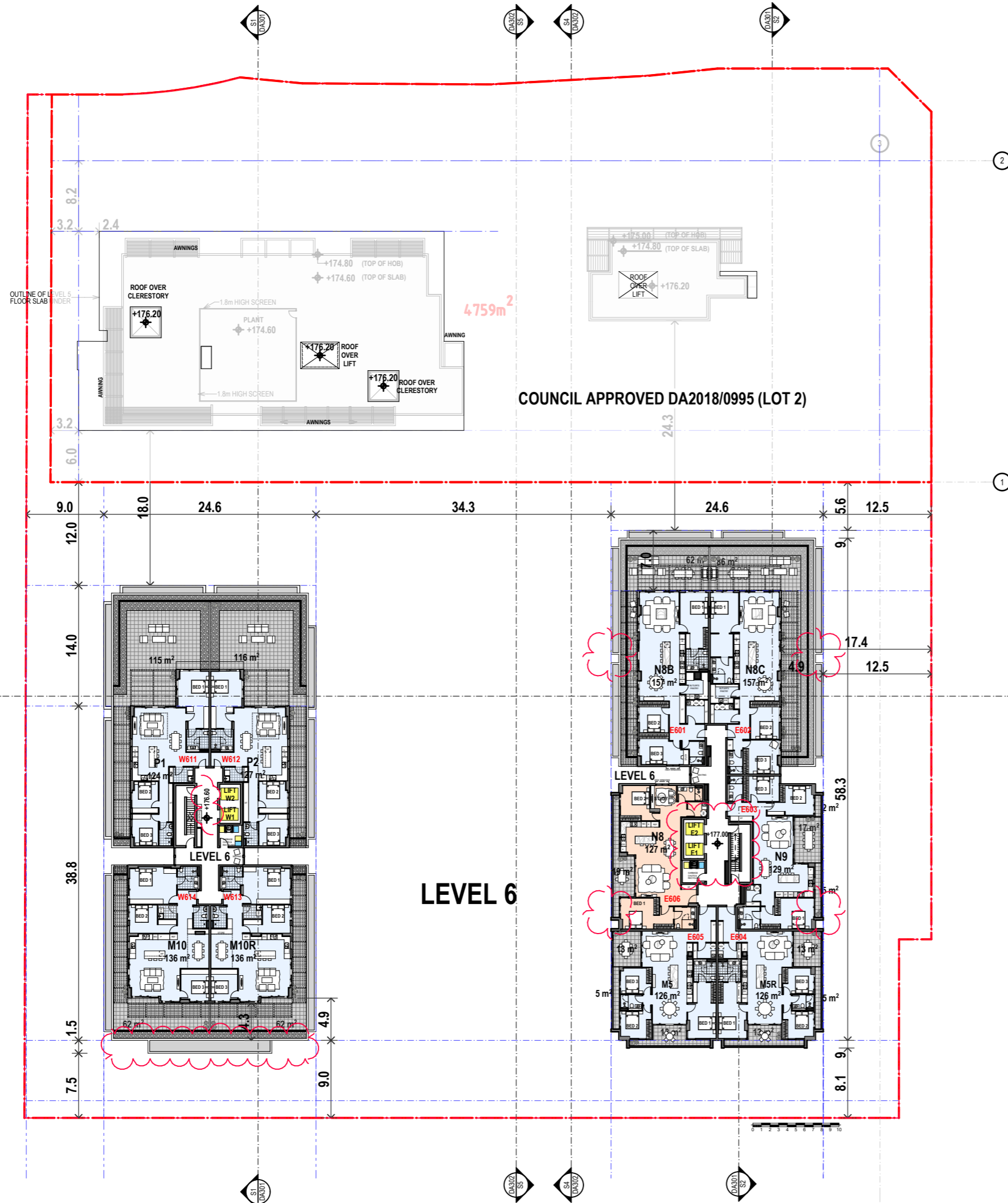
**PA STUDIO**  
 LEVEL 2, 20 YOUNG ST., NEUTRAL BAY, NSW 2089  
 TEL: 8968 1900 FAX: 8968 1999 ACN: 603 389 288

NOMINATED ARCHITECT: GEORGE REVAY-REG#3954

|                    |                         |
|--------------------|-------------------------|
| SCALE: AS SHOWN    | DRAWING<br><b>DA208</b> |
| SUBSET: PLANS      |                         |
| DRAWN BY: SU/WH/SP | ISSUE<br><b>D</b>       |



Printed 23/05/2024



COUNCIL APPROVED DA2018/0995 (LOT 2)

LEVEL 6

| ISSUE | REVISIONS                   | DATE     |
|-------|-----------------------------|----------|
| H     | S4.55                       | 23.05.24 |
| G     | S4.55                       | 31.10.23 |
| F     | FOR CONCILIATION CONFERENCE | 01.03.23 |
| E     | FOR CONCILIATION CONFERENCE | 24.02.23 |
| D     | S82A REVIEW                 | 01.11.21 |

PROJECT:  
**MIXED USE AND SENIORS LIVING DEVELOPMENT**  
 5 Skyline Place Frenchs Forest NSW 2086  
 SP 49558

**LEVEL 6 FLOOR PLAN**

**PA STUDIO**

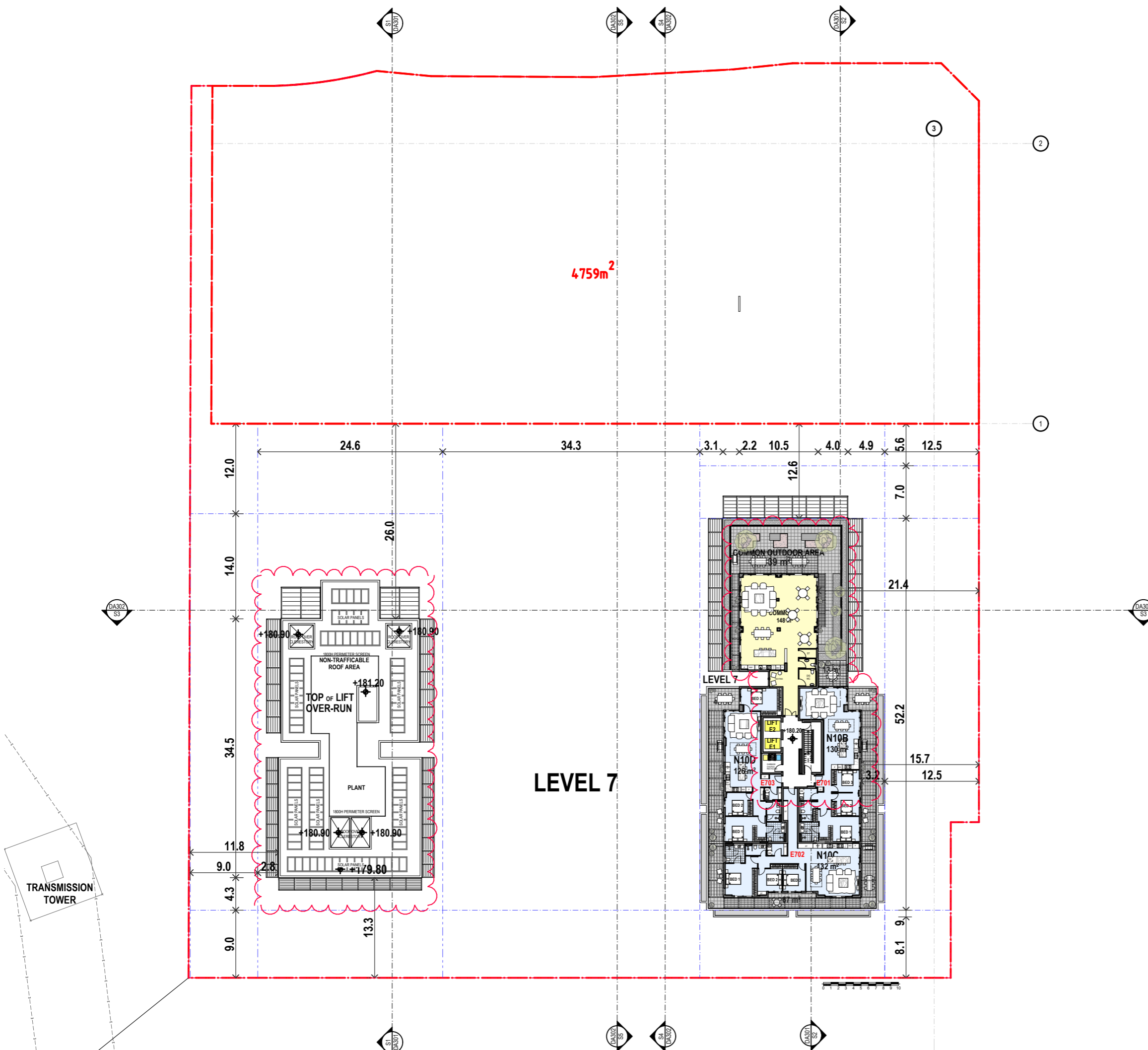
LEVEL 2, 20 YOUNG ST., NEUTRAL BAY, NSW 2089  
TEL: 8968 1900 FAX: 8968 1999 ACN: 603 389 288

NOMINATED ARCHITECT: GEORGE REVAY-REG#3954

|                    |                         |
|--------------------|-------------------------|
| SCALE: AS SHOWN    | DRAWING<br><b>DA209</b> |
| SUBSET: PLANS      |                         |
| DRAWN BY: SU/WH/SP | ISSUE<br><b>D</b>       |



Printed 23/05/2024



| ISSUE | REVISIONS                   | DATE     |
|-------|-----------------------------|----------|
| H     | S4.55                       | 23.05.24 |
| G     | S4.55                       | 31.10.23 |
| F     | FOR CONCILIATION CONFERENCE | 01.03.23 |
| E     | FOR CONCILIATION CONFERENCE | 24.02.23 |
| D     | S82A REVIEW                 | 01.11.21 |

PROJECT:  
**MIXED USE AND SENIORS LIVING DEVELOPMENT**  
 5 Skyline Place Frenchs Forest NSW 2086  
 SP 49558

### LEVEL 7 FLOOR PLAN

**PA STUDIO**

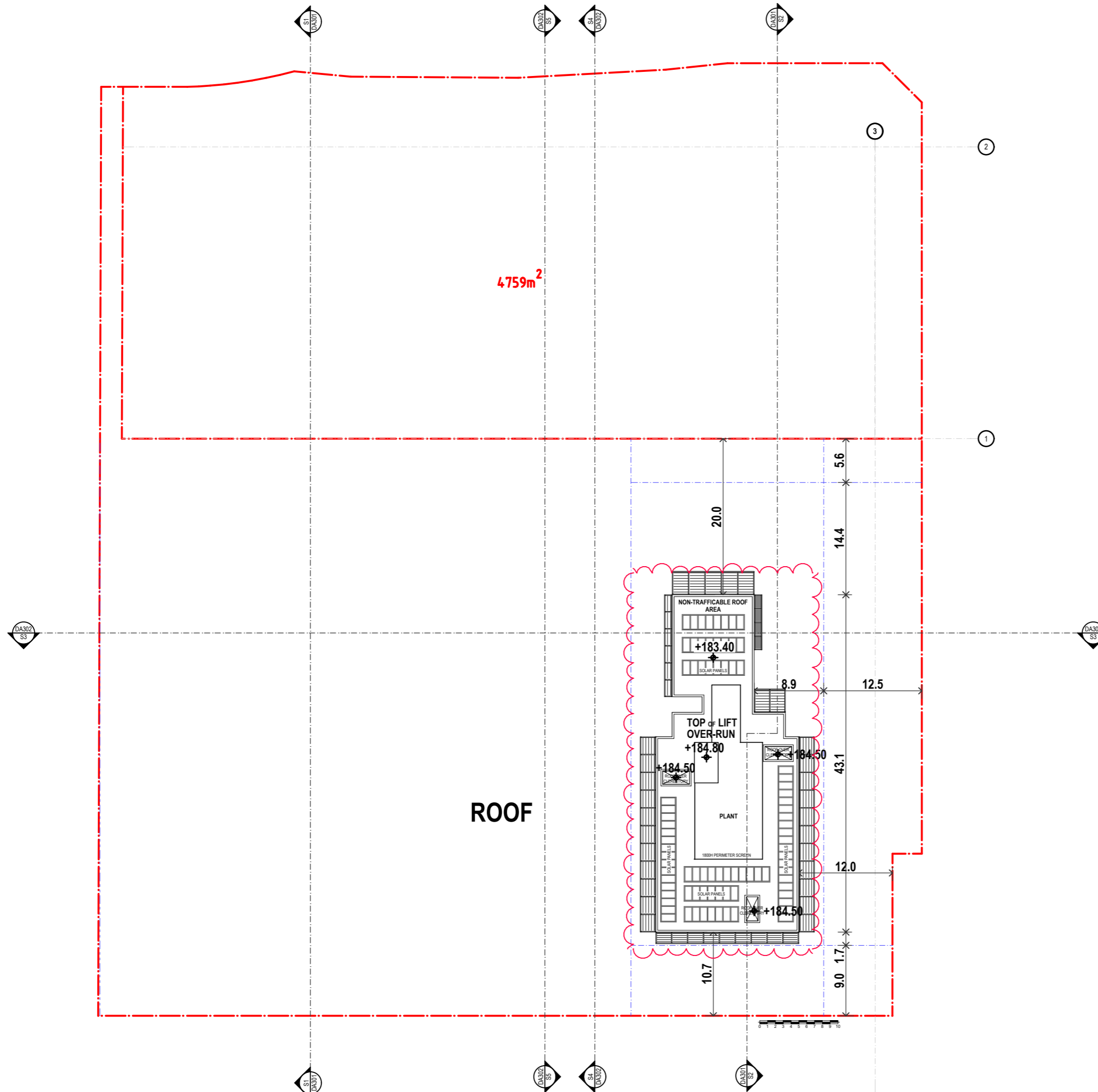
LEVEL 2, 20 YOUNG ST., NEUTRAL BAY, NSW 2089  
 TEL: 8968 1900 FAX: 8968 1999 ACN: 603 389 288

NOMINATED ARCHITECT: GEORGE REVAY-REG#3954

|                    |                         |
|--------------------|-------------------------|
| SCALE: AS SHOWN    | DRAWING<br><b>DA210</b> |
| SUBSET: PLANS      |                         |
| DRAWN BY: SU/WH/SP | ISSUE<br>H              |



Printed 23/05/2024



| ISSUE | REVISIONS                   | DATE     |
|-------|-----------------------------|----------|
| H     | S4.55                       | 23.05.24 |
| G     | S4.55                       | 31.10.23 |
| F     | FOR CONCILIATION CONFERENCE | 01.03.23 |
| E     | FOR CONCILIATION CONFERENCE | 24.02.23 |
| D     | S82A REVIEW                 | 01.11.21 |

PROJECT:  
**MIXED USE AND SENIORS LIVING DEVELOPMENT**  
 5 Skyline Place Frenchs Forest NSW 2086  
 SP 49558

### ROOF PLAN

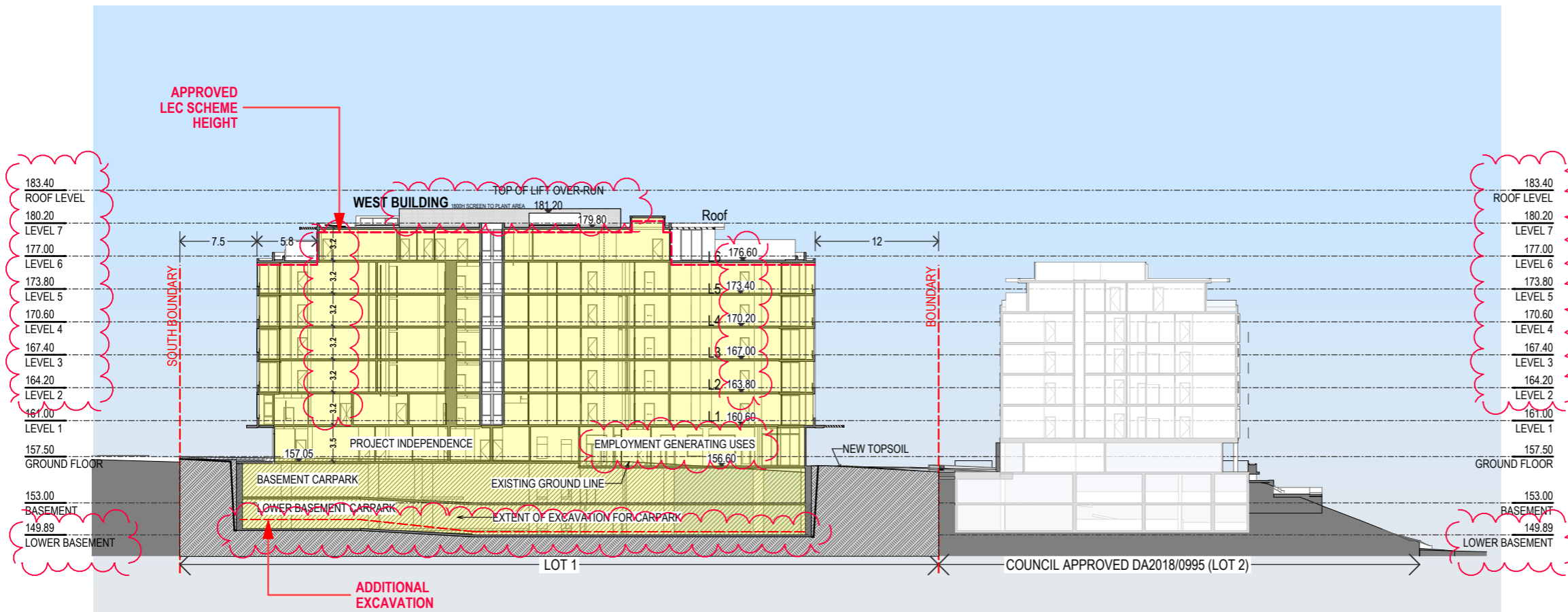
**PA STUDIO**  
 LEVEL 2, 20 YOUNG ST., NEUTRAL BAY, NSW 2089  
 TEL: 8968 1900 FAX: 8968 1999 ACN: 603 389 288

NOMINATED ARCHITECT: GEORGE REVAY-REG#3954

|                    |                         |
|--------------------|-------------------------|
| SCALE: AS SHOWN    | DRAWING<br><b>DA211</b> |
| SUBSET: PLANS      |                         |
| DRAWN BY: SU/WH/SP | ISSUE<br>H              |

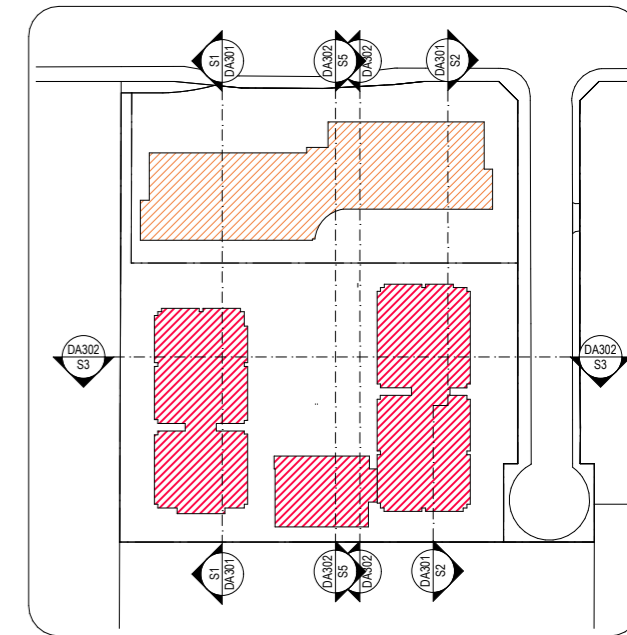


Printed 23/05/2024

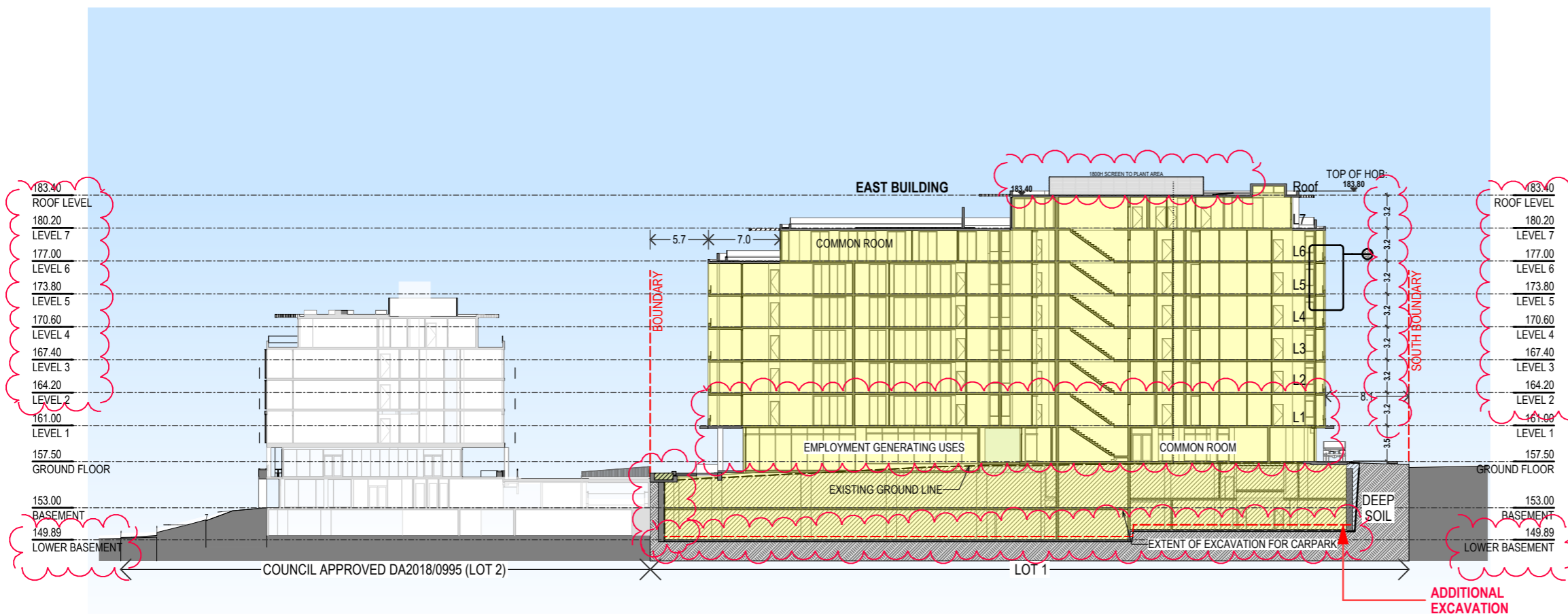


SECTION S1: LOOKING WEST

1:500



KEY PLAN



SECTION S2: LOOKING EAST

1:500

| ISSUE | REVISIONS                   | DATE     |
|-------|-----------------------------|----------|
| H     | S4.55                       | 23.05.24 |
| G     | S4.55                       | 31.10.23 |
| F     | FOR CONCILIATION CONFERENCE | 01.03.23 |
| E     | FOR CONCILIATION CONFERENCE | 24.02.23 |
| D     | S82A REVIEW                 | 01.11.21 |

PROJECT:  
**MIXED USE AND SENIORS LIVING DEVELOPMENT**  
 5 Skyline Place Frenchs Forest NSW 2086  
 SP 49558

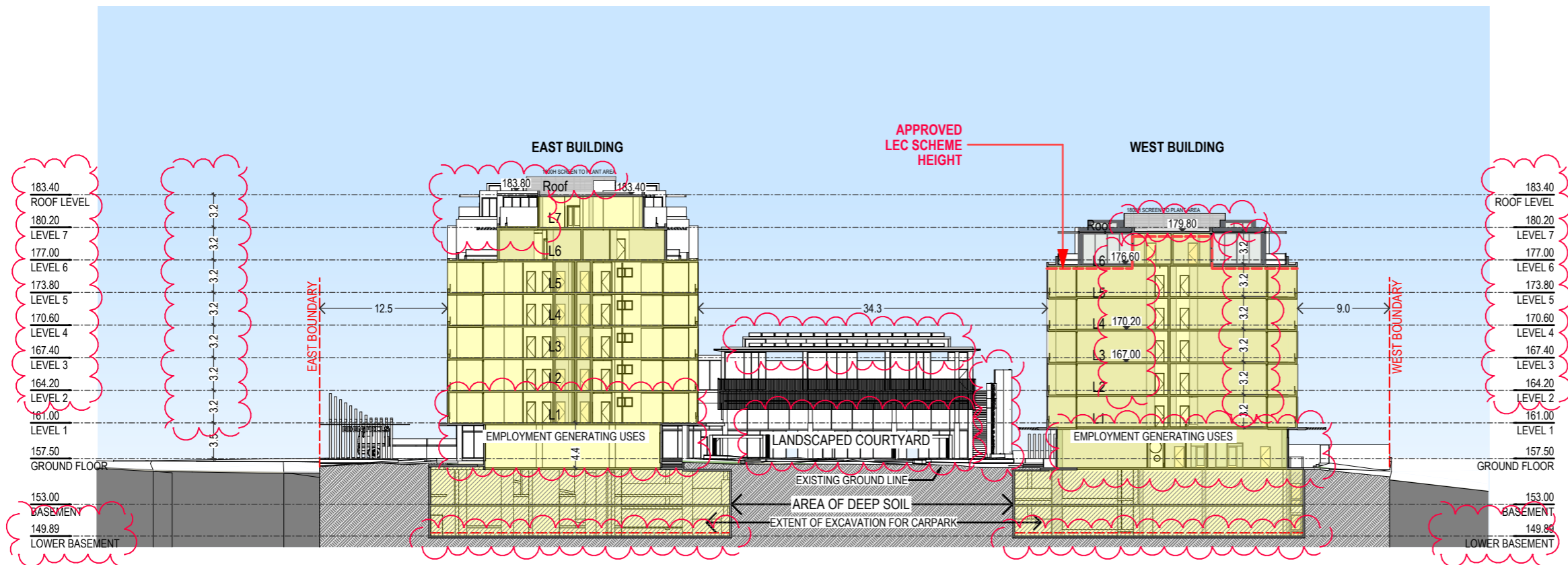
**SECTIONS S1 & S2**

**PA STUDIO**

LEVEL 2, 20 YOUNG ST, NEUTRAL BAY, NSW 2089  
 TEL: 8968 1900 FAX: 8968 1999 ACN: 603 389 288

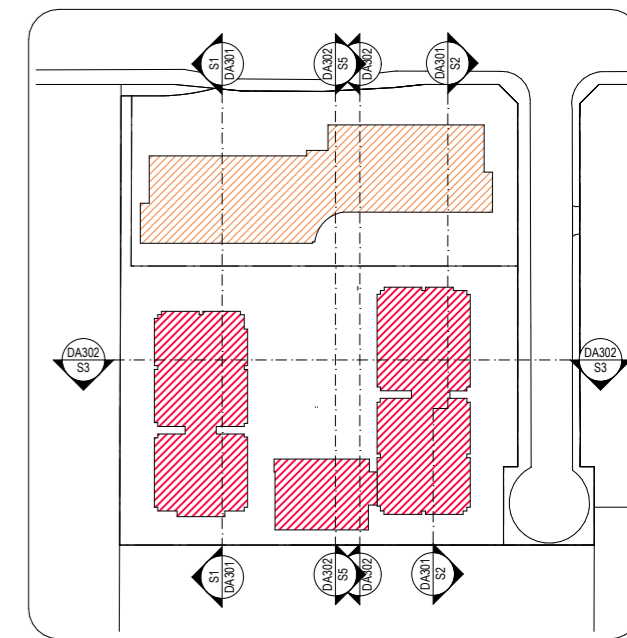
NOMINATED ARCHITECT: GEORGE REVAY-REG#3954

|                    |                         |
|--------------------|-------------------------|
| SCALE: AS SHOWN    | DRAWING<br><b>DA301</b> |
| SUBSET: SECTIONS   |                         |
| DRAWN BY: SU/WH/SP | ISSUE<br><b>H</b>       |

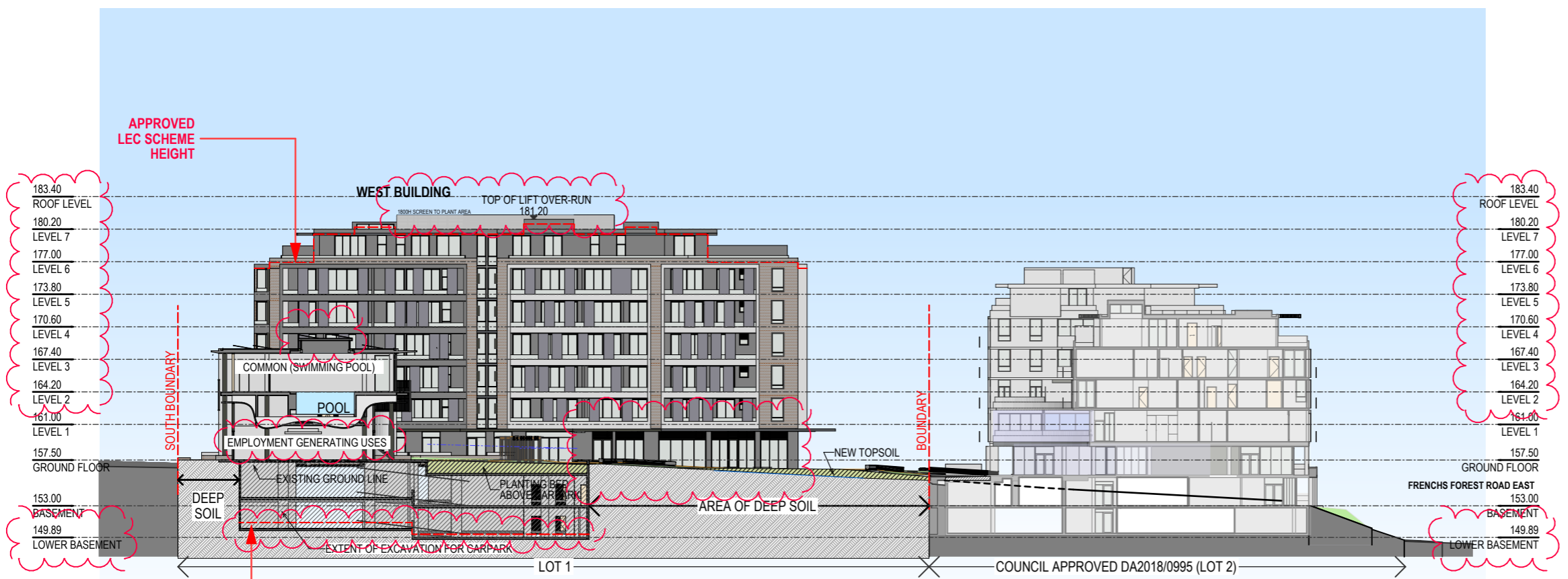


SECTION S3: LOOKING SOUTH

1:500



KEY PLAN



SECTION S4: LOOKING WEST

1:500

| ISSUE | REVISIONS                   | DATE     |
|-------|-----------------------------|----------|
| H     | S4.55                       | 23.05.24 |
| G     | S4.55                       | 31.10.23 |
| F     | FOR CONCILIATION CONFERENCE | 01.03.23 |
| E     | FOR CONCILIATION CONFERENCE | 24.02.23 |
| D     | S82A REVIEW                 | 01.11.21 |

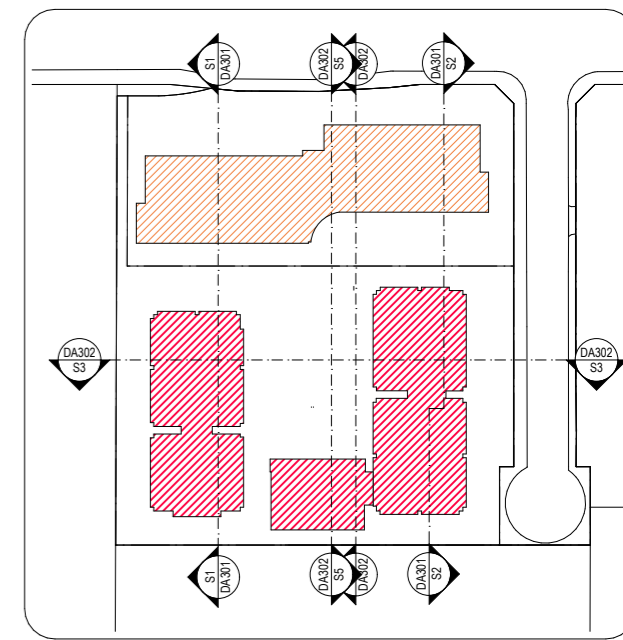
PROJECT:  
**MIXED USE AND SENIORS LIVING DEVELOPMENT**  
 5 Skyline Place Frenchs Forest NSW 2086  
 SP 49558

SECTIONS S3 & S4

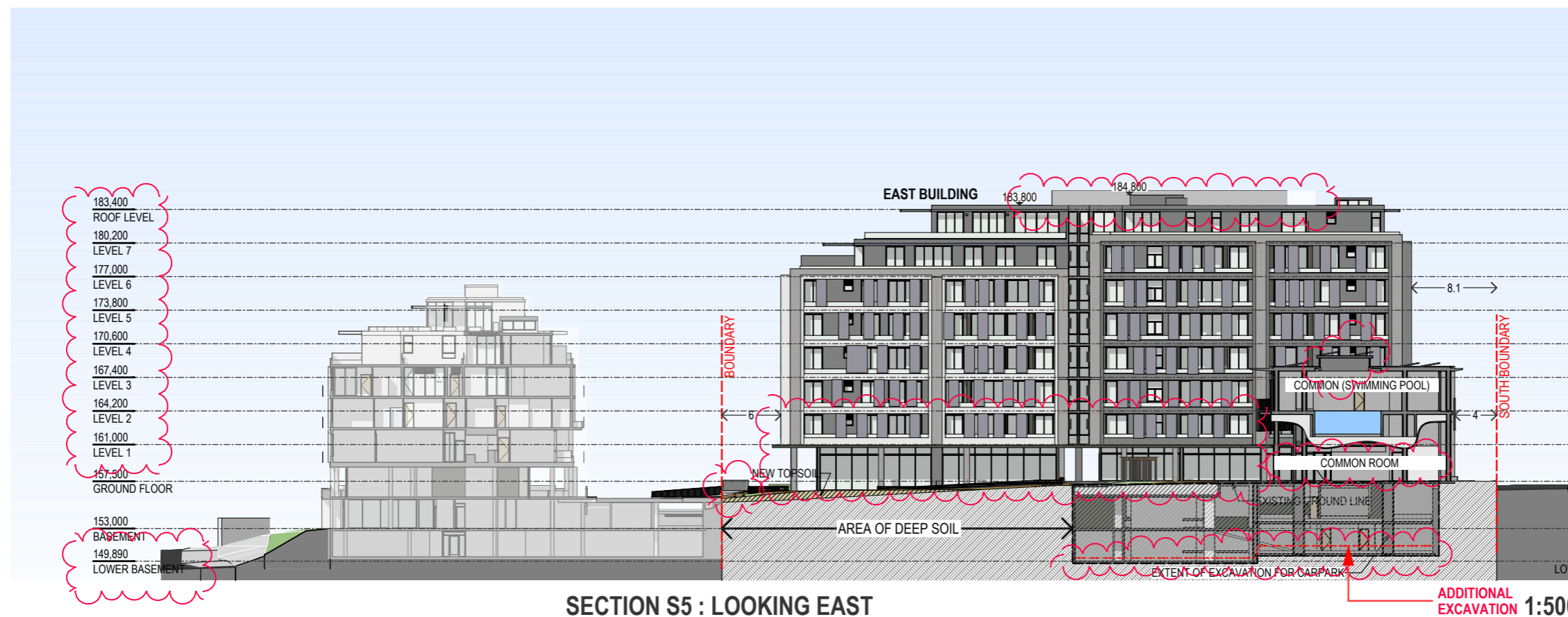
**PA STUDIO**  
 LEVEL 2, 20 YOUNG ST. NEUTRAL BAY, NSW 2089  
 TEL: 8968 1900 FAX: 8968 1999 ACN: 603 389 288

NOMINATED ARCHITECT: GEORGE REVAY-REG#3954

|                    |                         |
|--------------------|-------------------------|
| SCALE: AS SHOWN    | DRAWING<br><b>DA302</b> |
| SUBSET: SECTIONS   |                         |
| DRAWN BY: SU/WH/SP | ISSUE<br>H              |



KEY PLAN



SECTION S5 : LOOKING EAST

ADDITIONAL EXCAVATION 1:500

| ISSUE | REVISIONS                   | DATE     |
|-------|-----------------------------|----------|
| H     | S4.55                       | 23.05.24 |
| G     | S4.55                       | 31.10.23 |
| F     | FOR CONCILIATION CONFERENCE | 01.03.23 |
| E     | FOR CONCILIATION CONFERENCE | 24.02.23 |
| D     | S82A REVIEW                 | 01.11.21 |

PROJECT:  
**MIXED USE AND SENIORS LIVING DEVELOPMENT**  
 5 Skyline Place Frenchs Forest NSW 2086  
 SP 49558

SECTION S5

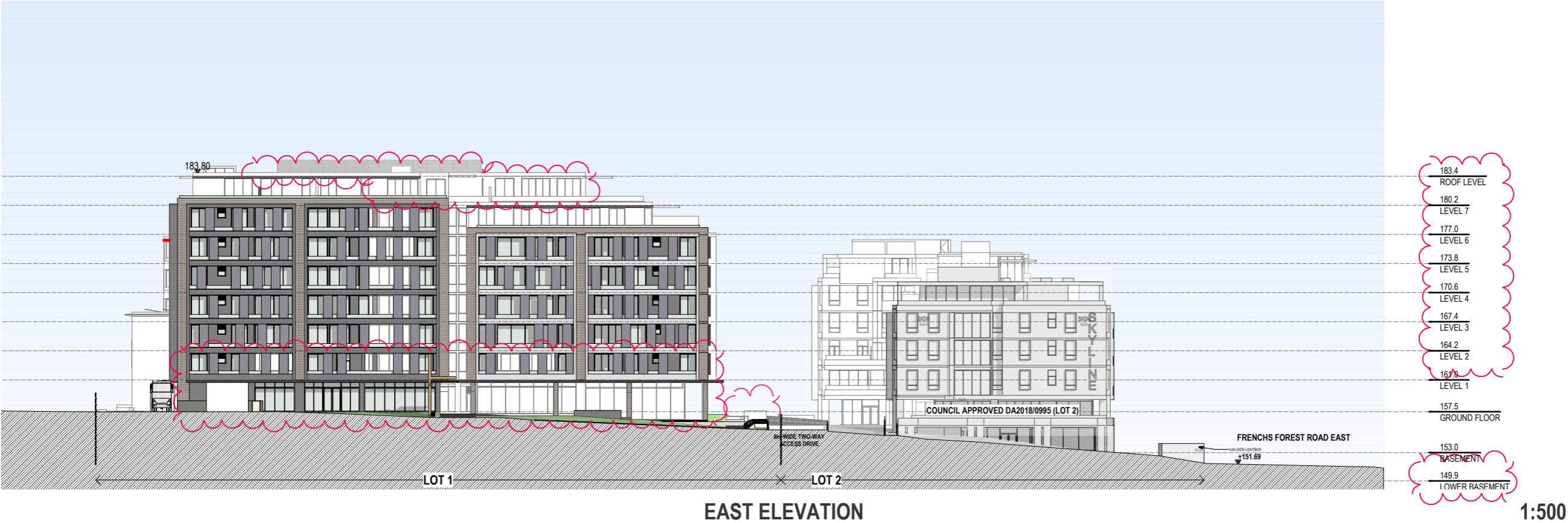
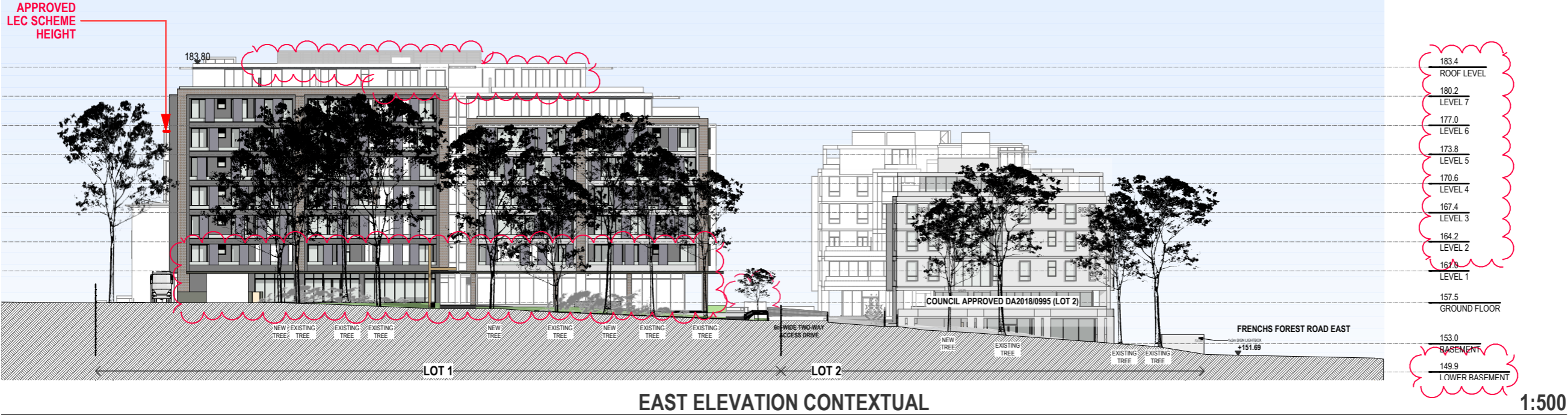
**PA STUDIO**

LEVEL 2, 20 YOUNG ST, NEUTRAL BAY, NSW 2089  
 TEL: 8968 1900 FAX: 8968 1999 ACN: 603 389 288

NOMINATED ARCHITECT: GEORGE REVAY-REG#3954

|                    |              |
|--------------------|--------------|
| SCALE: AS SHOWN    | DRAWING      |
| SUBSET: SECTIONS   | <b>DA303</b> |
| DRAWN BY: SU/WH/SP | ISSUE        |
|                    | <b>H</b>     |





| ISSUE | REVISIONS                   | DATE     |
|-------|-----------------------------|----------|
| H     | S4.55                       | 23.05.24 |
| G     | S4.55                       | 31.10.23 |
| F     | FOR CONCILIATION CONFERENCE | 01.03.23 |
| E     | FOR CONCILIATION CONFERENCE | 24.02.23 |
| D     | S82A REVIEW                 | 01.11.21 |

PROJECT:  
**MIXED USE AND SENIORS LIVING DEVELOPMENT**  
 5 Skyline Place Frenchs Forest NSW 2086  
 SP 49558

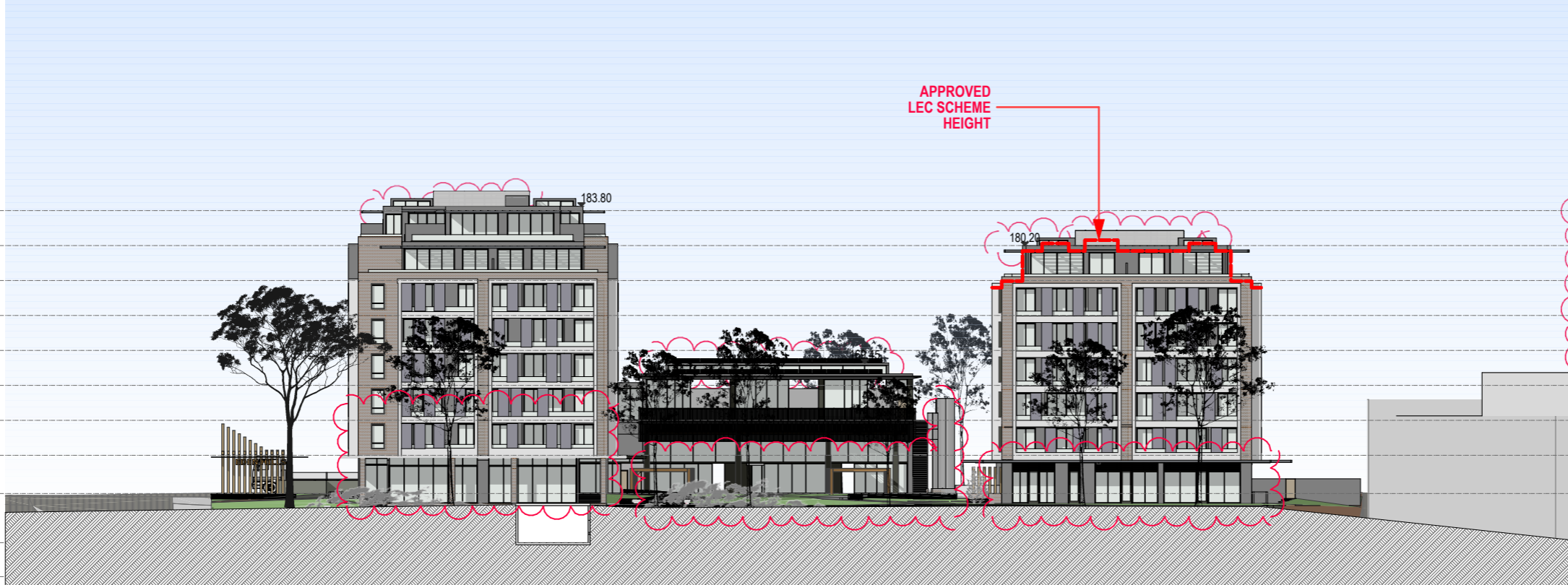
**EAST ELEVATION**

**P A S TUDIO**  
 LEVEL 2, 20 YOUNG ST. NEUTRAL BAY, NSW 2089  
 TEL: 8968 1900 FAX: 8968 1999 ACN: 603 389 288  
 NOMINATED ARCHITECT: GEORGE REVAY-REG#3954

|                    |                         |
|--------------------|-------------------------|
| SCALE: AS SHOWN    | DRAWING<br><b>DA401</b> |
| SUBSET: ELEVATIONS |                         |
| DRAWN BY: SU/WH/SP | ISSUE <b>H</b>          |

APPROVED  
LEC SCHEME  
HEIGHT

- 183.4 ROOF LEVEL
- 180.2 LEVEL 7
- 177.0 LEVEL 6
- 173.8 LEVEL 5
- 170.6 LEVEL 4
- 167.4 LEVEL 3
- 164.2 LEVEL 2
- 161.0 LEVEL 1
- 157.5 GROUND FLOOR
- 153.0 BASEMENT
- 149.9 LOWER BASEMENT

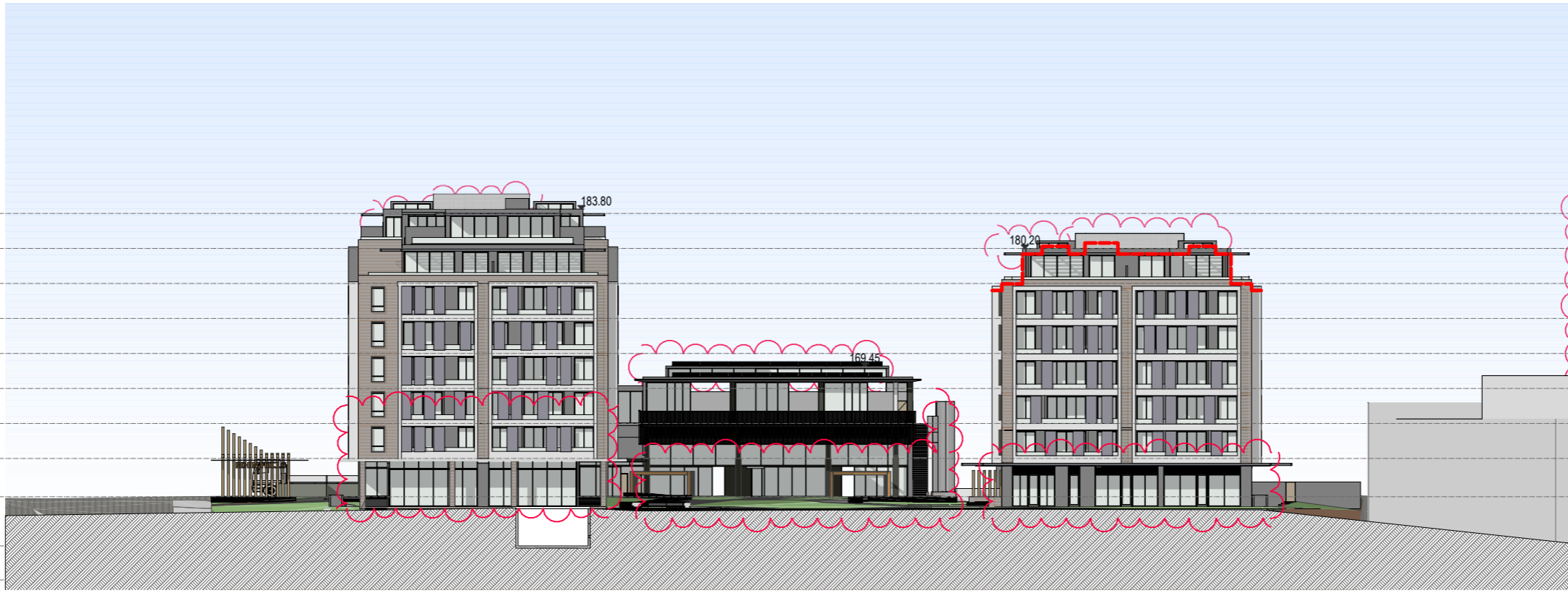


- 183.4 ROOF LEVEL
- 180.2 LEVEL 7
- 177.0 LEVEL 6
- 173.8 LEVEL 5
- 170.6 LEVEL 4
- 167.4 LEVEL 3
- 164.2 LEVEL 2
- 161.0 LEVEL 1
- 157.5 GROUND FLOOR
- 153.0 BASEMENT
- 149.9 LOWER BASEMENT

NORTH ELEVATION CONTEXTUAL

1:500

- 183.4 ROOF LEVEL
- 180.2 LEVEL 7
- 177.0 LEVEL 6
- 173.8 LEVEL 5
- 170.6 LEVEL 4
- 167.4 LEVEL 3
- 164.2 LEVEL 2
- 161.0 LEVEL 1
- 157.5 GROUND FLOOR
- 153.0 BASEMENT
- 149.9 LOWER BASEMENT



- 183.4 ROOF LEVEL
- 180.2 LEVEL 7
- 177.0 LEVEL 6
- 173.8 LEVEL 5
- 170.6 LEVEL 4
- 167.4 LEVEL 3
- 164.2 LEVEL 2
- 161.0 LEVEL 1
- 157.5 GROUND FLOOR
- 153.0 BASEMENT
- 149.9 LOWER BASEMENT

NORTH ELEVATION

1:500

| ISSUE | REVISIONS                   | DATE     |
|-------|-----------------------------|----------|
| H     | S4.55                       | 23.05.24 |
| G     | S4.55                       | 31.10.23 |
| F     | FOR CONCILIATION CONFERENCE | 01.03.23 |
| E     | FOR CONCILIATION CONFERENCE | 24.02.23 |
| D     | S82A REVIEW                 | 01.11.21 |

PROJECT:  
**MIXED USE AND SENIORS LIVING DEVELOPMENT**  
5 Skyline Place Frenchs Forest NSW 2086  
SP 49558

**NORTH ELEVATION**

**PA STUDIO**

LEVEL 2, 20 YOUNG ST. NEUTRAL BAY, NSW 2089  
TEL: 8968 1900 FAX: 8968 1999 ACN: 603 389 288

NOMINATED ARCHITECT: GEORGE REVAY-REG#3954

|                    |                |
|--------------------|----------------|
| SCALE: AS SHOWN    | DRAWING        |
| SUBSET: ELEVATIONS | <b>DA402</b>   |
| DRAWN BY: SU/WH/SP | ISSUE <b>H</b> |

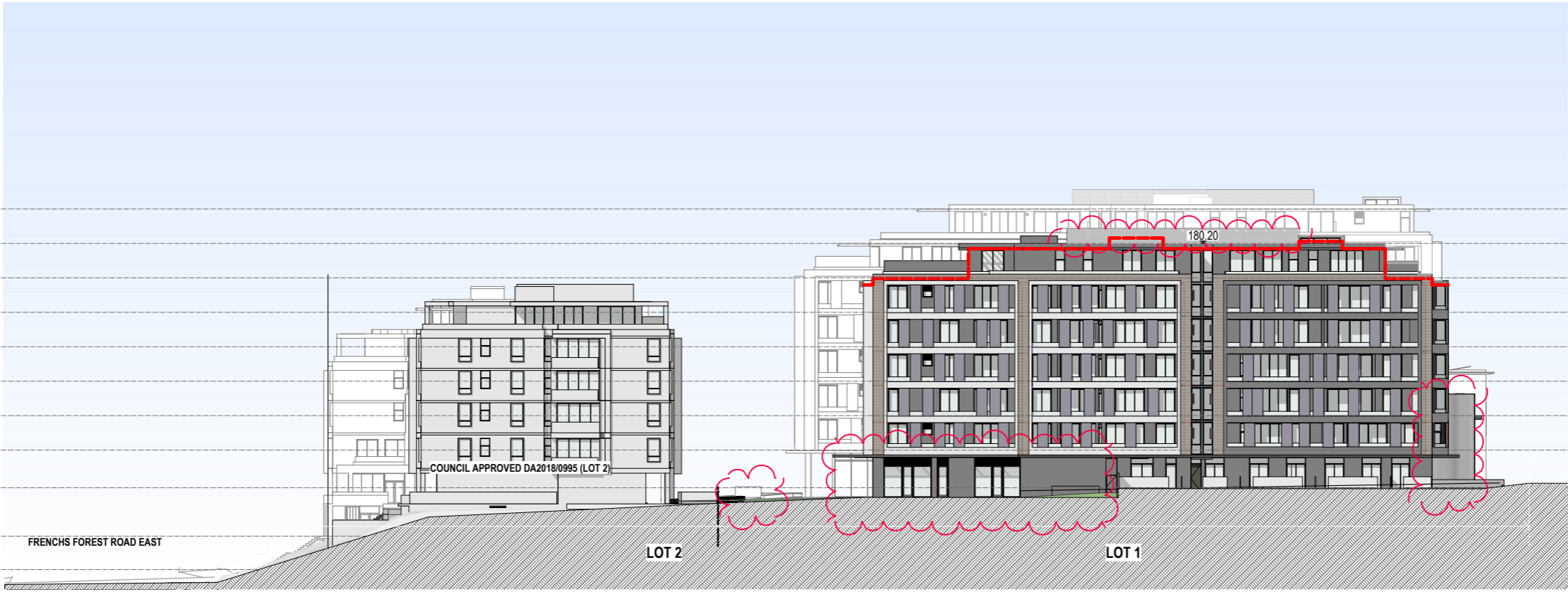
- 183.4 ROOF LEVEL
- 180.2 LEVEL 7
- 177.0 LEVEL 6
- 173.8 LEVEL 5
- 170.6 LEVEL 4
- 167.4 LEVEL 3
- 164.2 LEVEL 2
- 161.0 LEVEL 1
- 157.5 GROUND FLOOR
- 153.0 BASEMENT
- 149.9 LOWER BASEMENT



WEST ELEVATION CONTEXTUAL

1:500

- 183.4 ROOF LEVEL
- 180.2 LEVEL 7
- 177.0 LEVEL 6
- 173.8 LEVEL 5
- 170.6 LEVEL 4
- 167.4 LEVEL 3
- 164.2 LEVEL 2
- 161.0 LEVEL 1
- 157.5 GROUND FLOOR
- 153.0 BASEMENT
- 149.9 LOWER BASEMENT



WEST ELEVATION

1:500

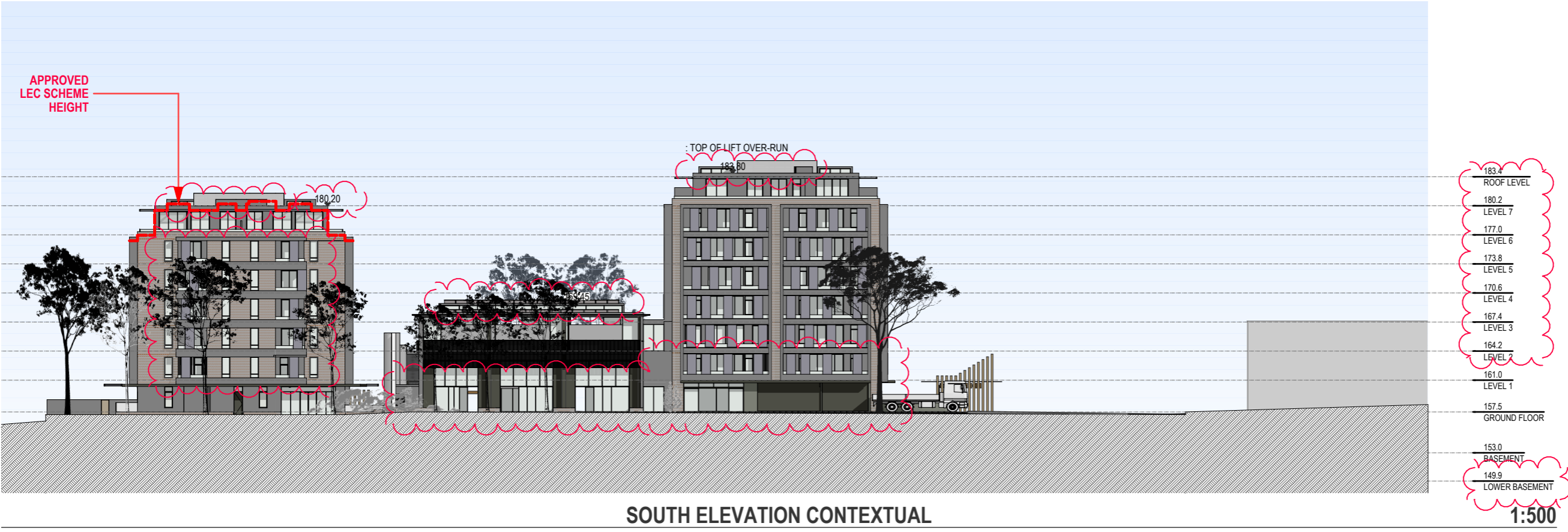
| ISSUE | REVISIONS                   | DATE     |
|-------|-----------------------------|----------|
| H     | S4.55                       | 23.05.24 |
| G     | S4.55                       | 31.10.23 |
| F     | FOR CONCILIATION CONFERENCE | 01.03.23 |
| E     | FOR CONCILIATION CONFERENCE | 24.02.23 |
| D     | S82A REVIEW                 | 01.11.21 |

PROJECT:  
**MIXED USE AND SENIORS LIVING DEVELOPMENT**  
 5 Skyline Place Frenchs Forest NSW 2086  
 SP 49558

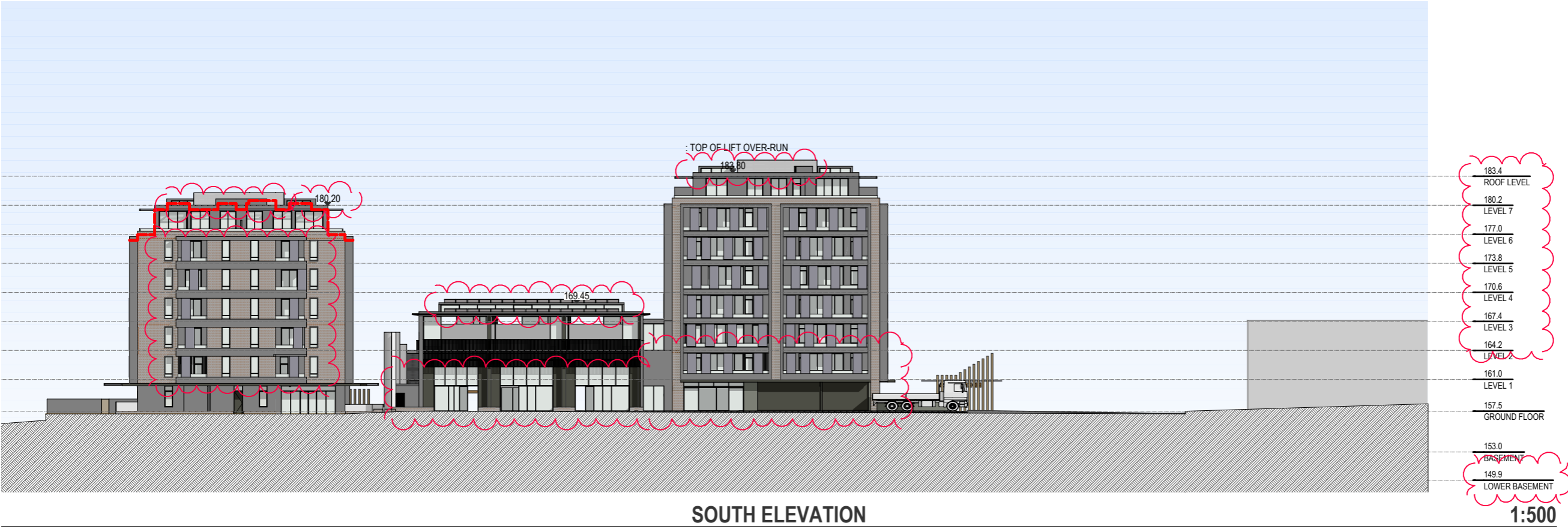
WEST ELEVATION

**PA STUDIO**  
 LEVEL 2, 20 YOUNG ST. NEUTRAL BAY, NSW 2089  
 TEL: 8968 1900 FAX: 8968 1999 ACN: 603 389 288  
 NOMINATED ARCHITECT: GEORGE REVAY-REG#3954

|                    |                |
|--------------------|----------------|
| SCALE: AS SHOWN    | DRAWING        |
| SUBSET: ELEVATIONS | <b>DA403</b>   |
| DRAWN BY: SU/WH/SP | ISSUE <b>H</b> |



SOUTH ELEVATION CONTEXTUAL



SOUTH ELEVATION

| ISSUE | REVISIONS                   | DATE     |
|-------|-----------------------------|----------|
| H     | S4.55                       | 23.05.24 |
| G     | S4.55                       | 31.10.23 |
| F     | FOR CONCILIATION CONFERENCE | 01.03.23 |
| E     | FOR CONCILIATION CONFERENCE | 24.02.23 |
| D     | S82A REVIEW                 | 01.11.21 |

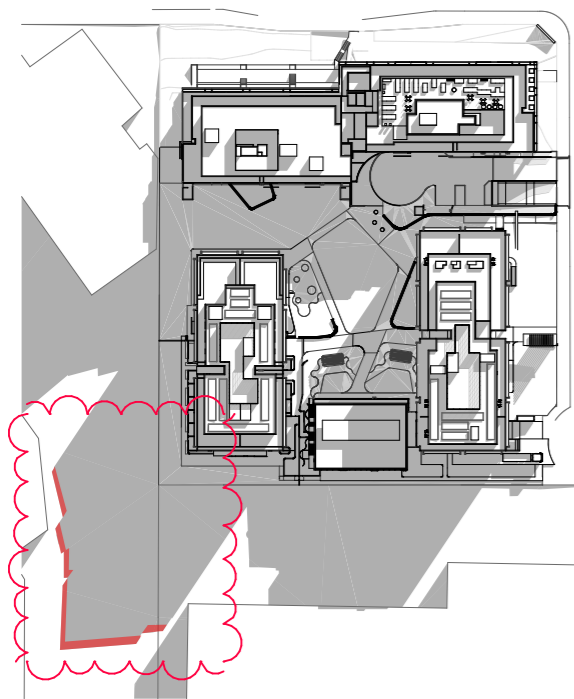
PROJECT:  
**MIXED USE AND SENIORS LIVING DEVELOPMENT**  
 5 Skyline Place Frenchs Forest NSW 2086  
 SP 49558

**SOUTH ELEVATION**

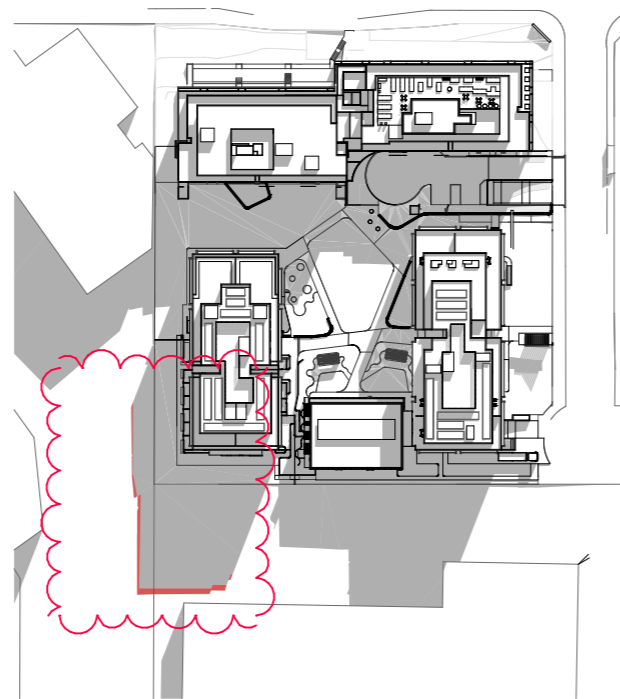
**PA STUDIO**  
 LEVEL 2, 20 YOUNG ST. NEUTRAL BAY, NSW 2089  
 TEL: 8968 1900 FAX: 8968 1999 ACN: 603 389 288

NOMINATED ARCHITECT: GEORGE REVAY-REG#3954

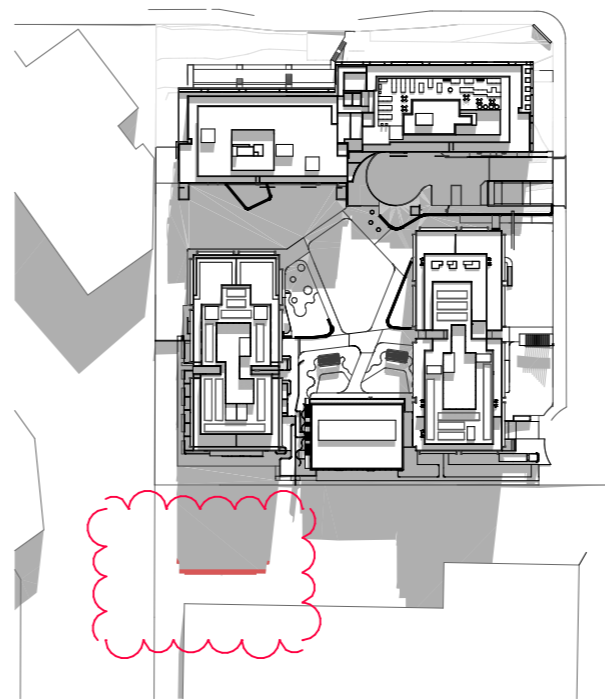
|                    |                         |
|--------------------|-------------------------|
| SCALE: AS SHOWN    | DRAWING<br><b>DA404</b> |
| SUBSET: ELEVATIONS |                         |
| DRAWN BY: SU/WH/SP | ISSUE<br><b>H</b>       |



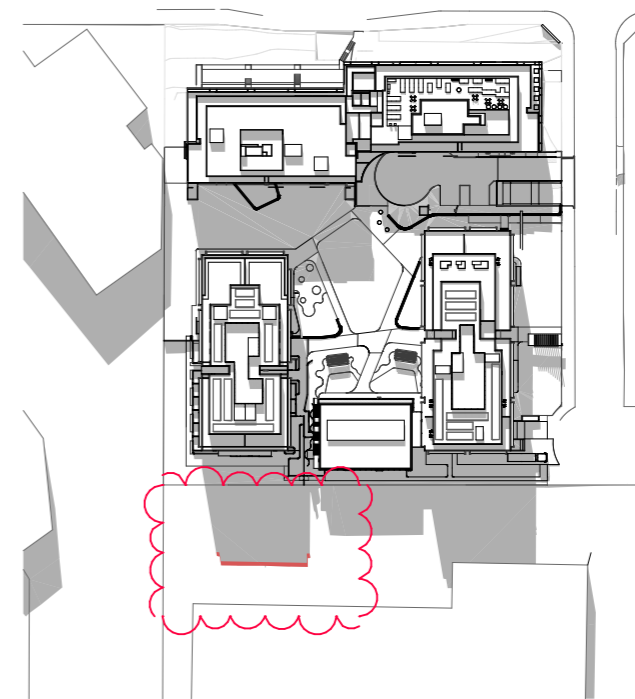
JUNE21 9AM - LOT1 1:2000



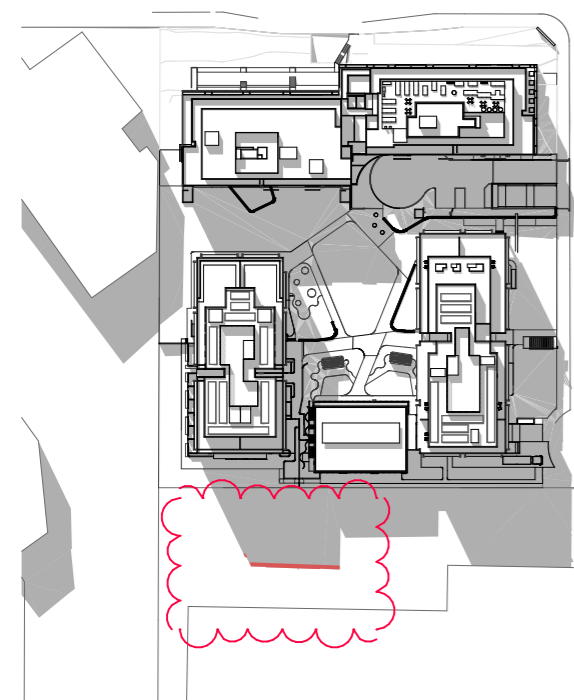
JUNE21 10AM - LOT1 1:2000



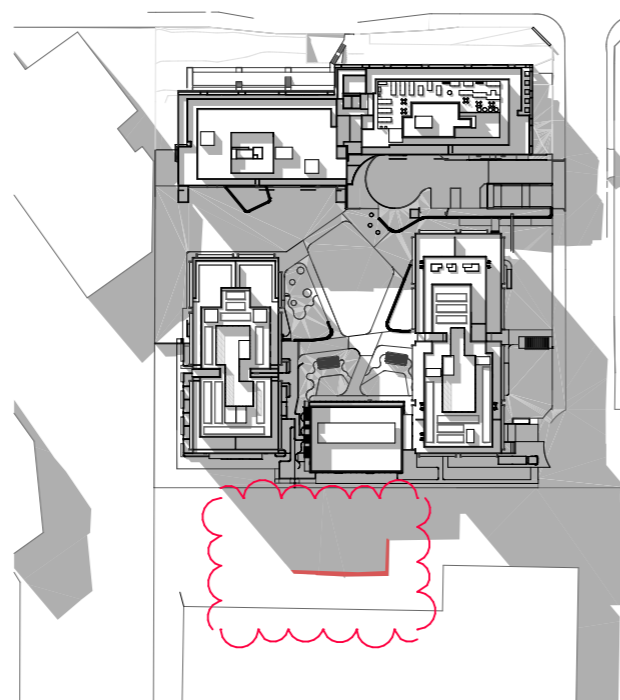
JUNE21 11AM - LOT1 1:2000



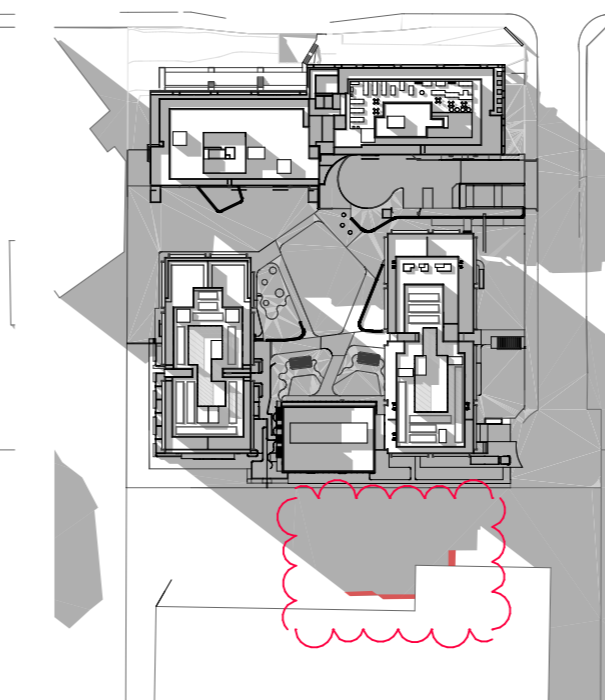
JUNE21 12PM - LOT1 1:2000



JUNE21 1PM - LOT1 1:2000



JUNE21 2PM - LOT1 1:2000



JUNE21 3PM - LOT1 1:2000



INCREASED SHADOW  
RESULTING FROM THE  
CHANGES TO THE LIFT  
STRUCTURE AND BUILDING  
HEIGHT

| ISSUE | REVISIONS                   | DATE     |
|-------|-----------------------------|----------|
| H     | S4.55                       | 23.05.24 |
| G     | S4.55                       | 31.10.23 |
| F     | FOR CONCILIATION CONFERENCE | 01.03.23 |
| E     | FOR CONCILIATION CONFERENCE | 24.02.23 |
| D     | S82A REVIEW                 | 01.11.21 |

PROJECT:

**MIXED USE AND SENIORS LIVING  
DEVELOPMENT**  
5 Skyline Place Frenchs Forest NSW 2086  
SP 49558

**SHADOW DIAGRAMS -  
JUNE 21 - MID WINTER**

**PA STUDIO**

LEVEL 2, 20 YOUNG ST., NEUTRAL BAY, NSW 2089  
TEL: 8968 1900 FAX: 8968 1999 ACN: 603 389 288

NOMINATED ARCHITECT: GEORGE REVAY-REG#3954

|  |                         |
|--|-------------------------|
| SCALE: SHADOW<br>DIAGRAMS &<br>VIEWS FROM THE<br>SUN | DRAWING<br><b>DA801</b> |
| DRAWN BY: SU/WH/SP                                   | ISSUE <b>H</b>          |