

ARCHITECT

CHROFI

3/1 THE CORSO MANLY NSW 2095 AUSTRALIA
T +61 2 8096 8500 E info@chrofi.com

CHOI ROPHA FIGHERA P/L ACN 144 714 885 ATF CHOI ROPHA FIGHERA UNIT TRUST T/A CHROFI ABN 22 365 257 107 NOMINATED ARCHITECT JOHN CHOI 8706 TAI ROPHA 6566 STEVEN FIGHERA 6609

THIS DRAWING SHOULD BE READ IN CONJUNCTION WITH ALL RELEVANT CONTRACTS, SPECIFICATION, REPORT AND DRAWINGS. DO NOT SCALE DRAWINGS. DIMENSIONS GOVERN. VERIFY ALL DIMENSIONS ON SITE BEFORE CONSTRUCTION. COPYRIGHT OF THIS DRAWING IS VESTED IN CHROFI.

REV	DATE	ISSUE	REV	DATE	ISSUE
A	17/6/21	FOR DEVELOPMENT APPLICATION			
B	20/7/21	FOR DEVELOPMENT APPLICATION			
C	1/9/21	FOR DEVELOPMENT APPLICATION			
D	24/9/21	FOR DEVELOPMENT APPLICATION			
F	24/3/22	FOR DEVELOPMENT APPLICATION			
G	19/4/22	FOR DEVELOPMENT APPLICATION			

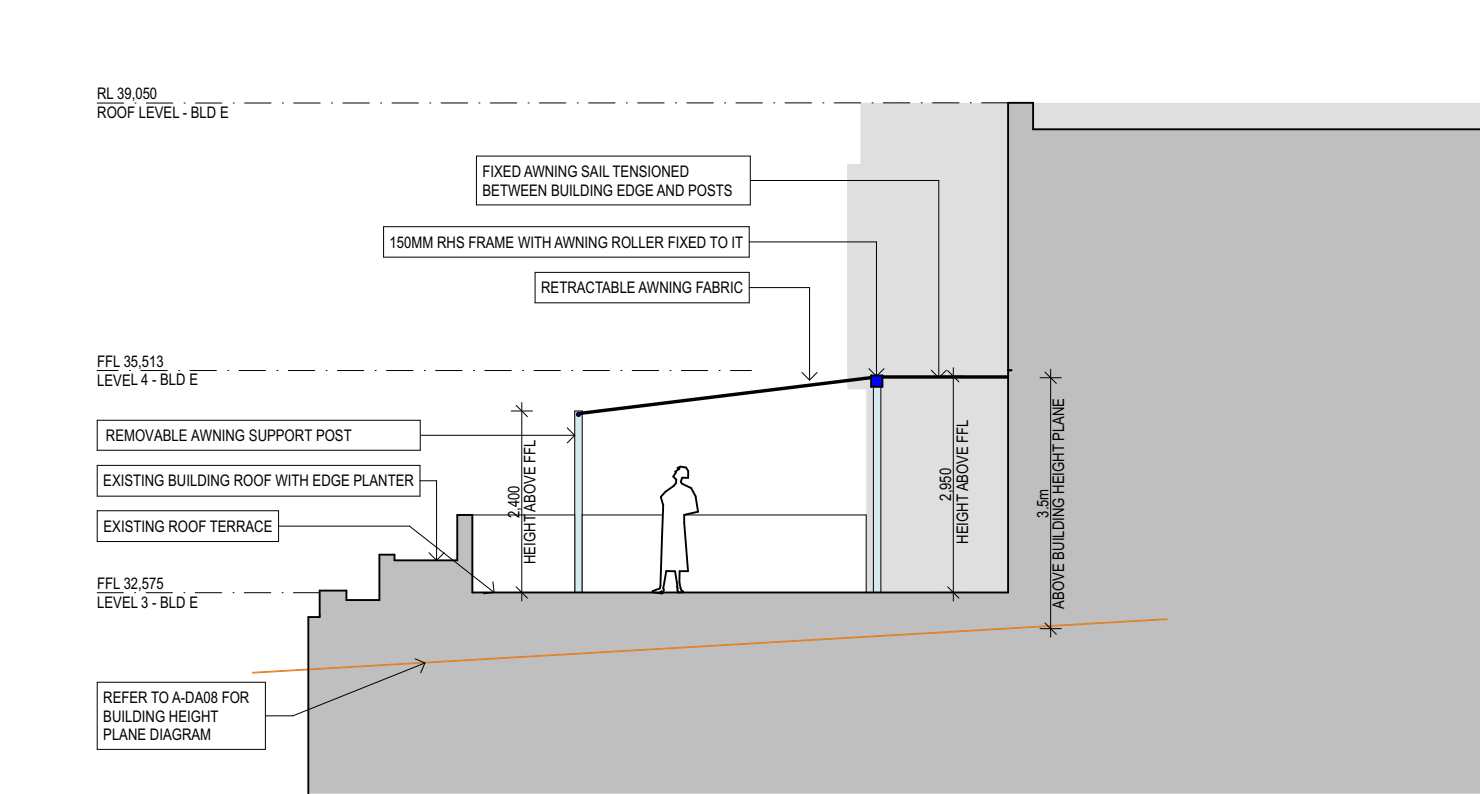
PROJECT
Watermark Freshwater - Building E Awnings
80 Evans Street, Freshwater NSW 2096

PROJECT NUMBER	PLOT DATE	DRAWN	CHECKED	SHEET SCALE	SHEET SIZE	NORTH
1354	20/4/22	CL	FR	1:500	A3	

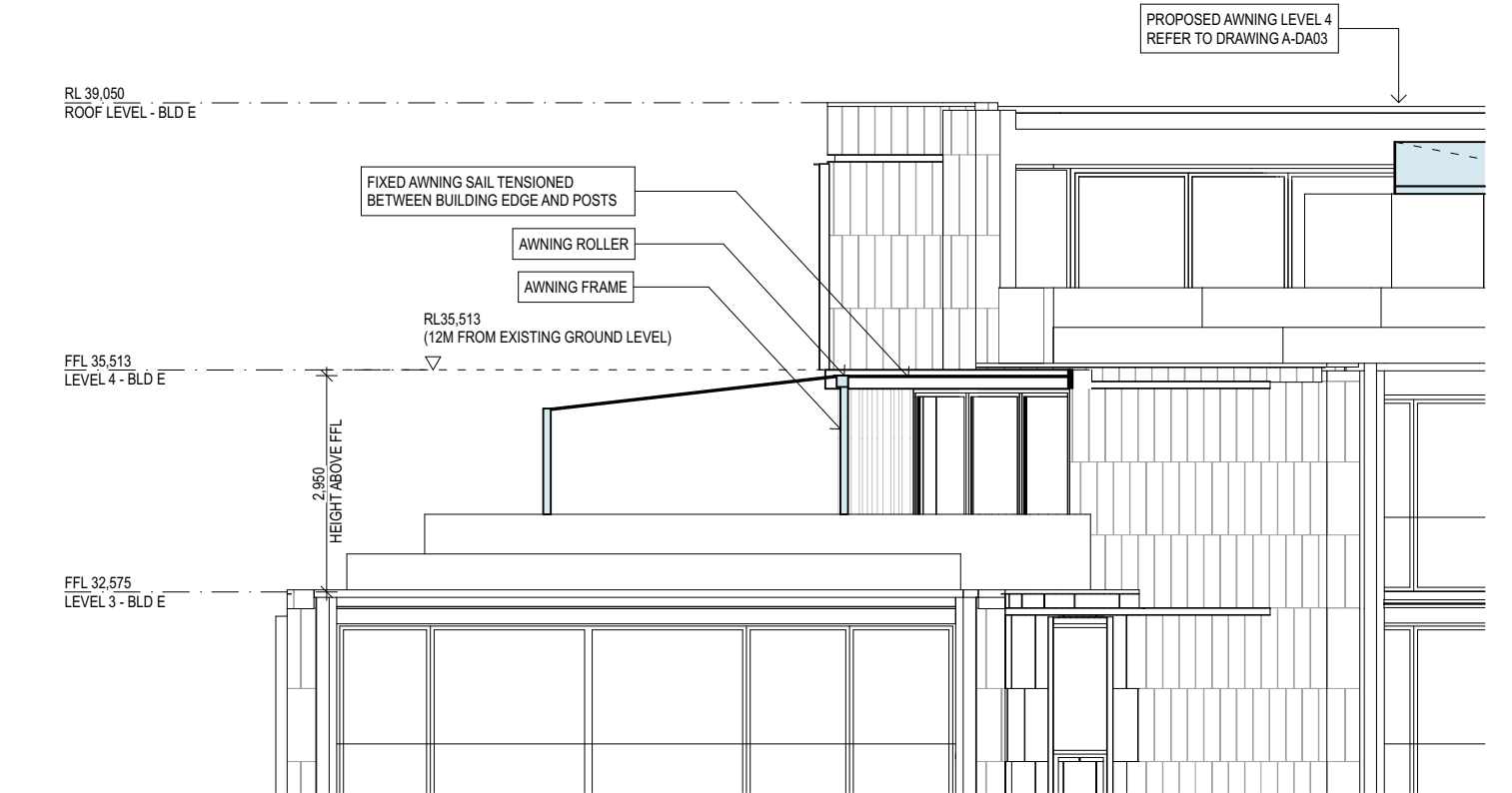
FOR DEVELOPMENT APPLICATION

SHEET TITLE
SITE PLAN

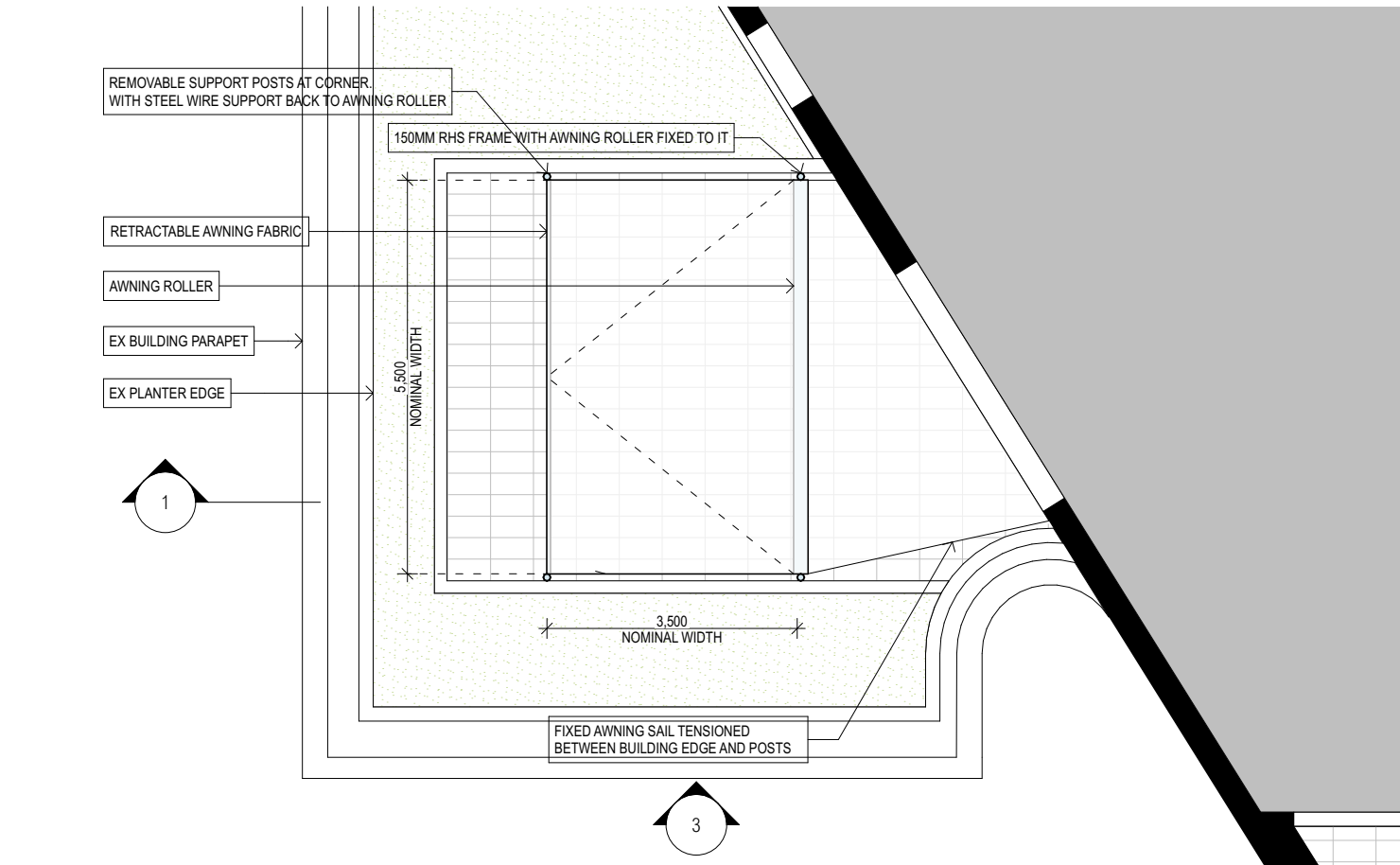
SHEET NUMBER	REVISION
A-DA01	G



1
-
AWNING BLD-E LEVEL 3 SECTION
1:100



3
-
AWNING BLD-E LEVEL 3 ELEVATION
1:100



2
-
AWNING BLD-E LEVEL 3 PLAN
1:100



AWNING FRAME: ANODIZED ALUMINIUM
(TO MATCH BLD E DARK FRAME DETAILS)



AWNING FABRIC: BEIGE

FOR DEVELOPMENT APPLICATION

ARCHITECT

CHROFI

3/1 THE CORSO MANLY NSW 2095 AUSTRALIA
T +61 2 8096 8500 E info@chrofi.com
CHOI ROPHA FIGHERA P/L ACN 144 714 885 ATF CHOI ROPHA FIGHERA UNIT TRUST T/A CHROFI ABN 22 365 257 167 NOMINATED ARCHITECT JOHN CHOI 8706 TAI ROPHA 6566 STEVEN FIGHERA 6609
THIS DRAWING SHOULD BE READ IN CONJUNCTION WITH ALL RELEVANT CONTRACTS, SPECIFICATION, REPORT AND DRAWINGS. DO NOT SCALE DRAWINGS. DIMENSIONS GOVERN. VERIFY ALL DIMENSIONS ON SITE BEFORE CONSTRUCTION. COPYRIGHT OF THIS DRAWING IS VESTED IN CHROFI.

REV	DATE	ISSUE
A	17/6/21	FOR DEVELOPMENT APPLICATION
B	20/7/21	FOR DEVELOPMENT APPLICATION
C	1/9/21	FOR DEVELOPMENT APPLICATION
D	24/9/21	FOR DEVELOPMENT APPLICATION
E	22/2/22	FOR DEVELOPMENT APPLICATION
F	24/3/22	FOR DEVELOPMENT APPLICATION
G	19/4/22	FOR DEVELOPMENT APPLICATION

REV DATE ISSUE

PROJECT

Watermark Freshwater - Building E Awnings
80 Evans Street, Freshwater NSW 2096

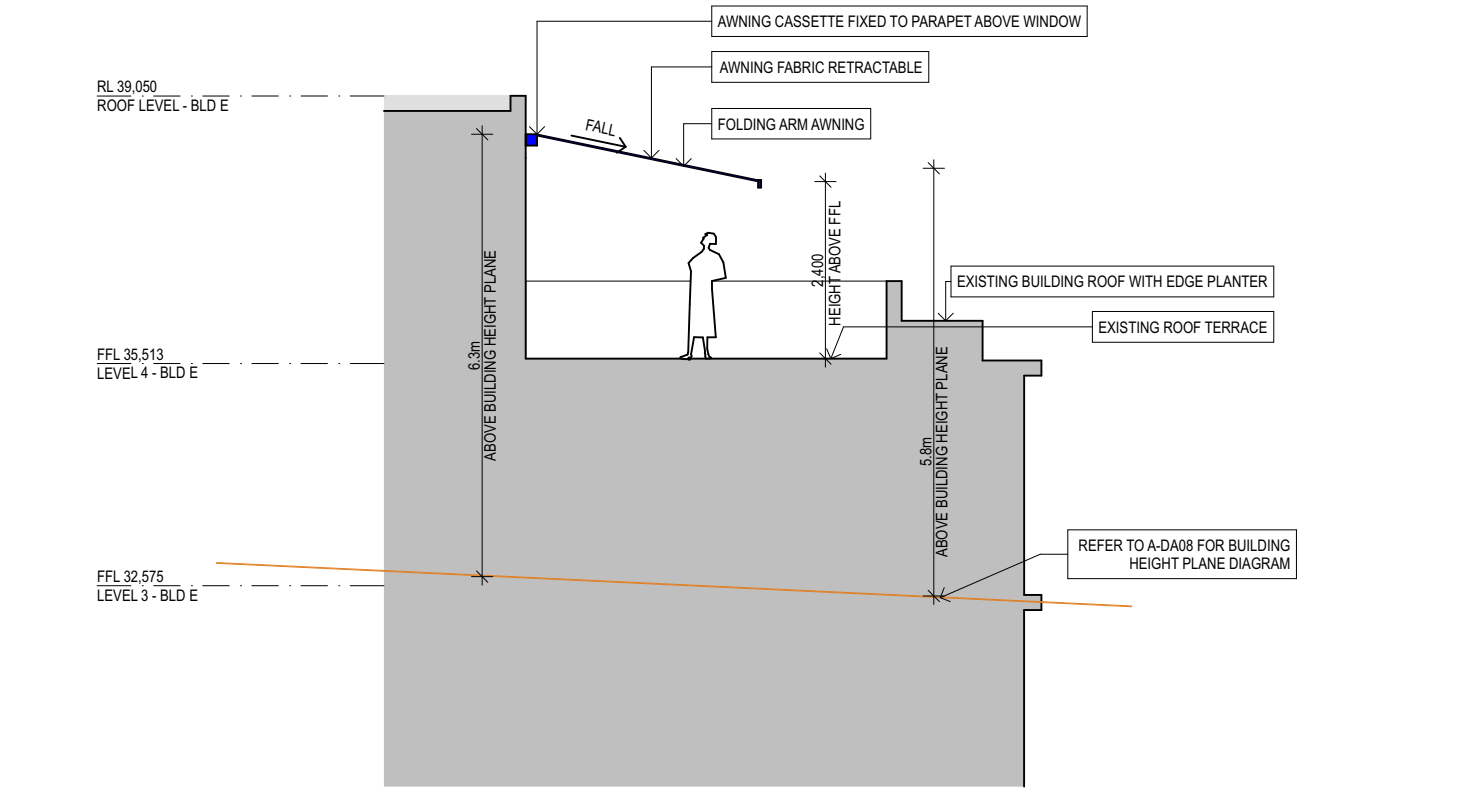
PROJECT NUMBER	PLOT DATE	DRAWN	CHECKED	SHEET SCALE	SHEET SIZE
1354	20/4/22	CL	FR	1:100	A3



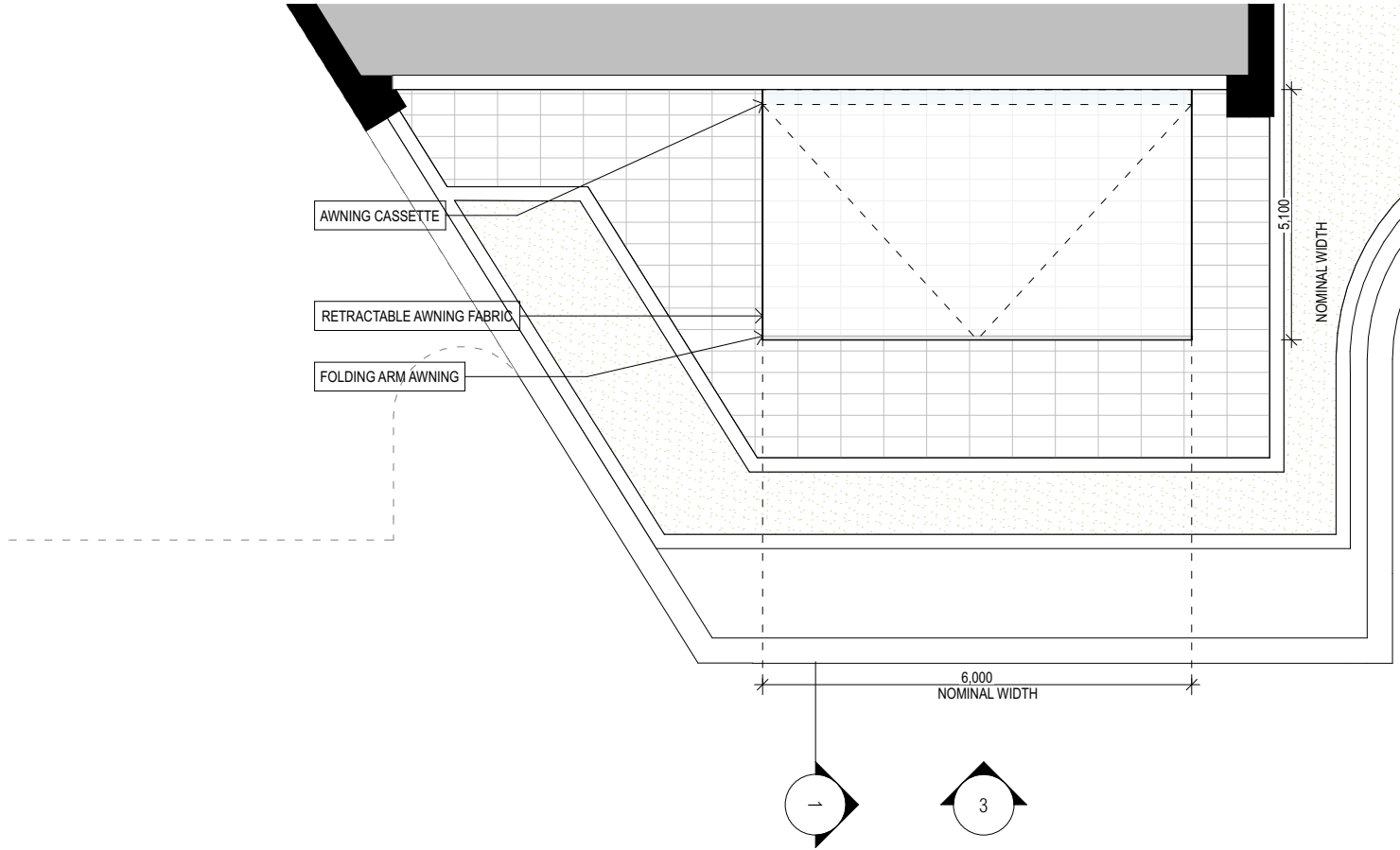
SHEET TITLE

BUILDING E - LEVEL 3 - WEST AWNING
DETAIL

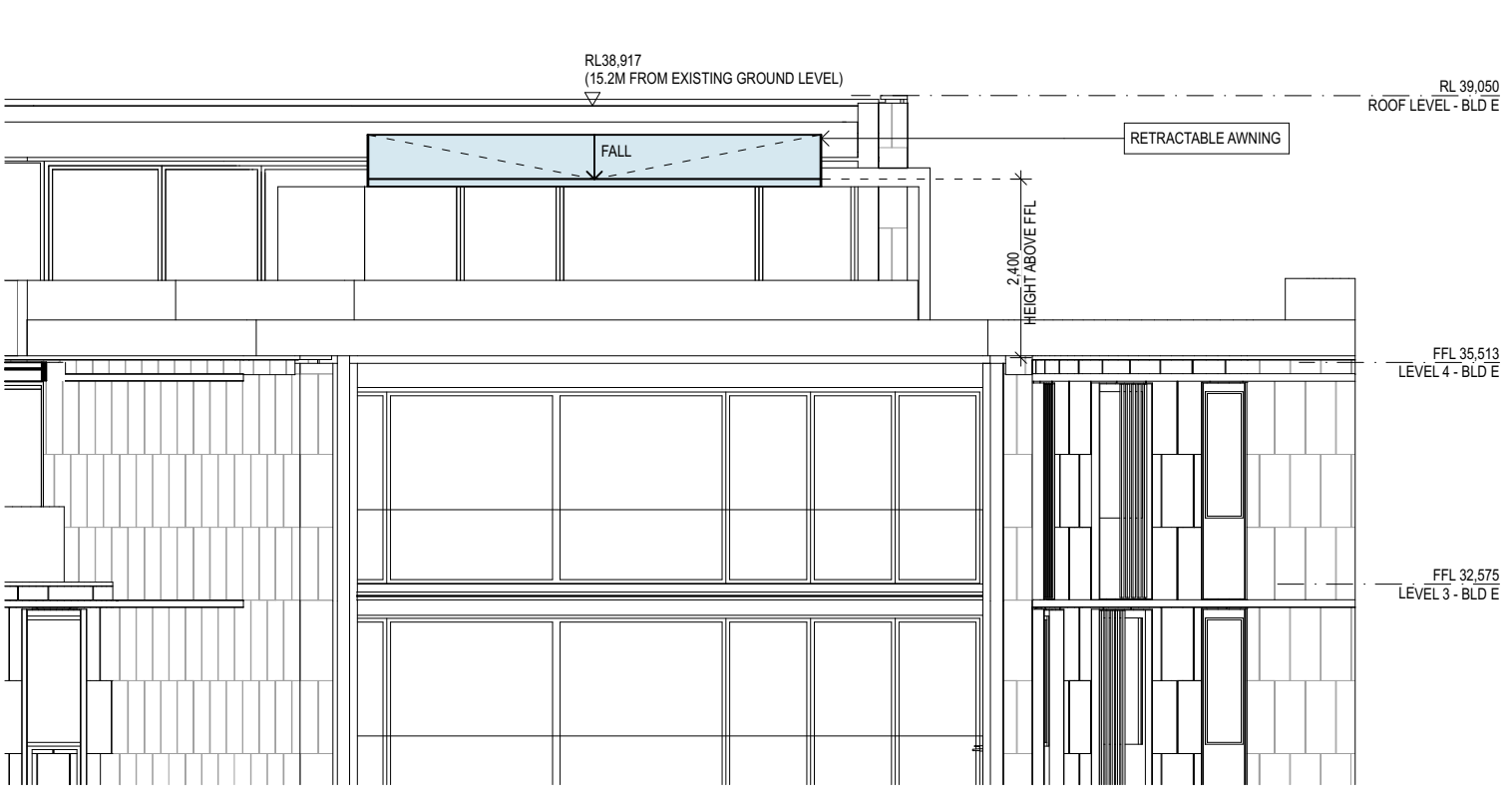
SHEET NUMBER	REVISION
A-DA02	G



1
-
AWNING BLD-E LEVEL 4 SECTION
1:100



2
-
AWNING BLD-E LEVEL 4 PLAN
1:100



3
-
AWNING BLD-E LEVEL 4 ELEVATION
1:100

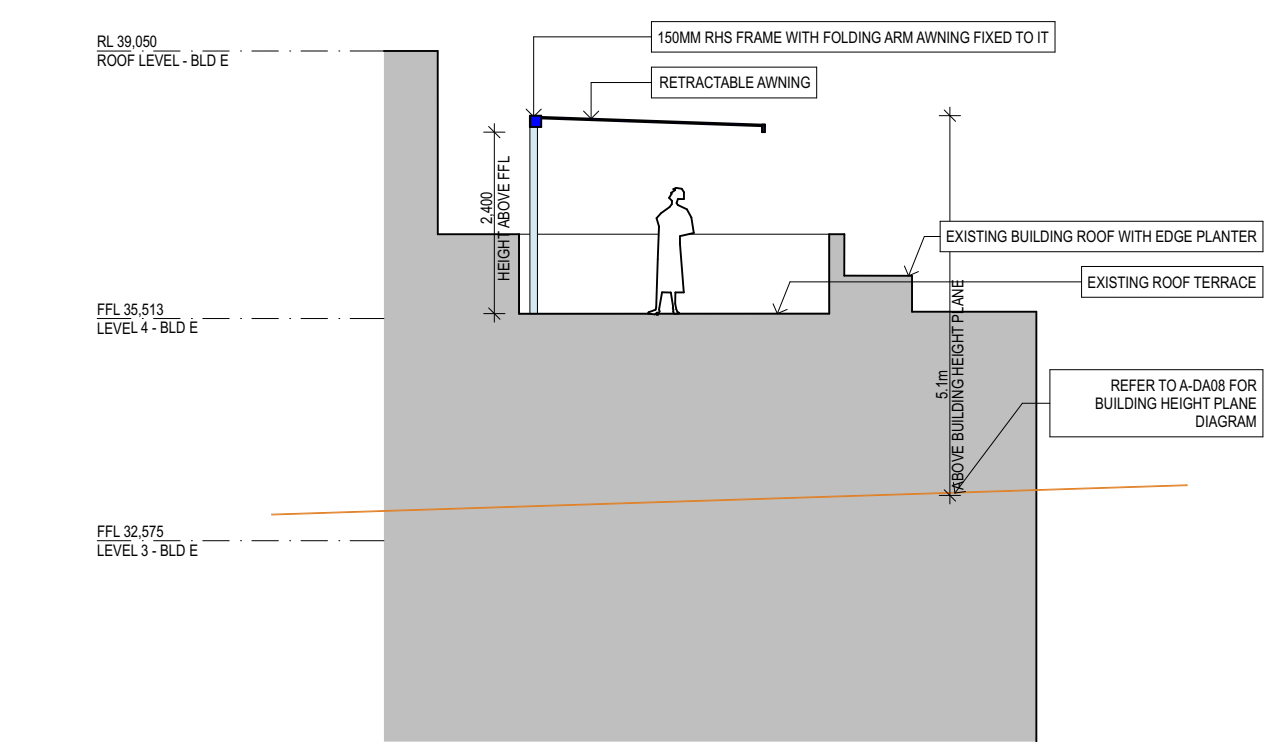


AWNING FRAME: ANODIZED ALUMINIUM
(TO MATCH BLD E DARK FRAME DETAILS)

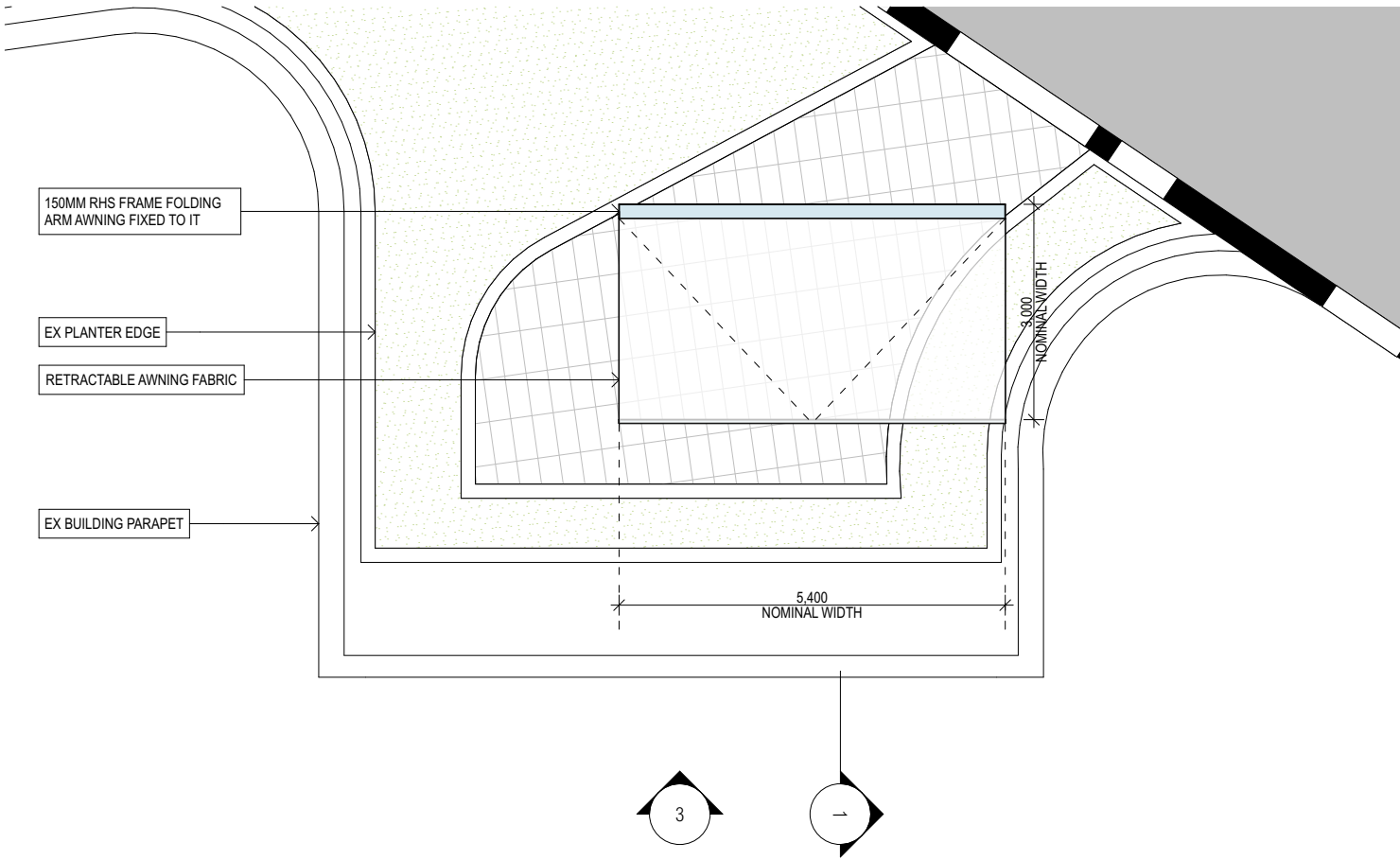


AWNING FABRIC: BEIGE

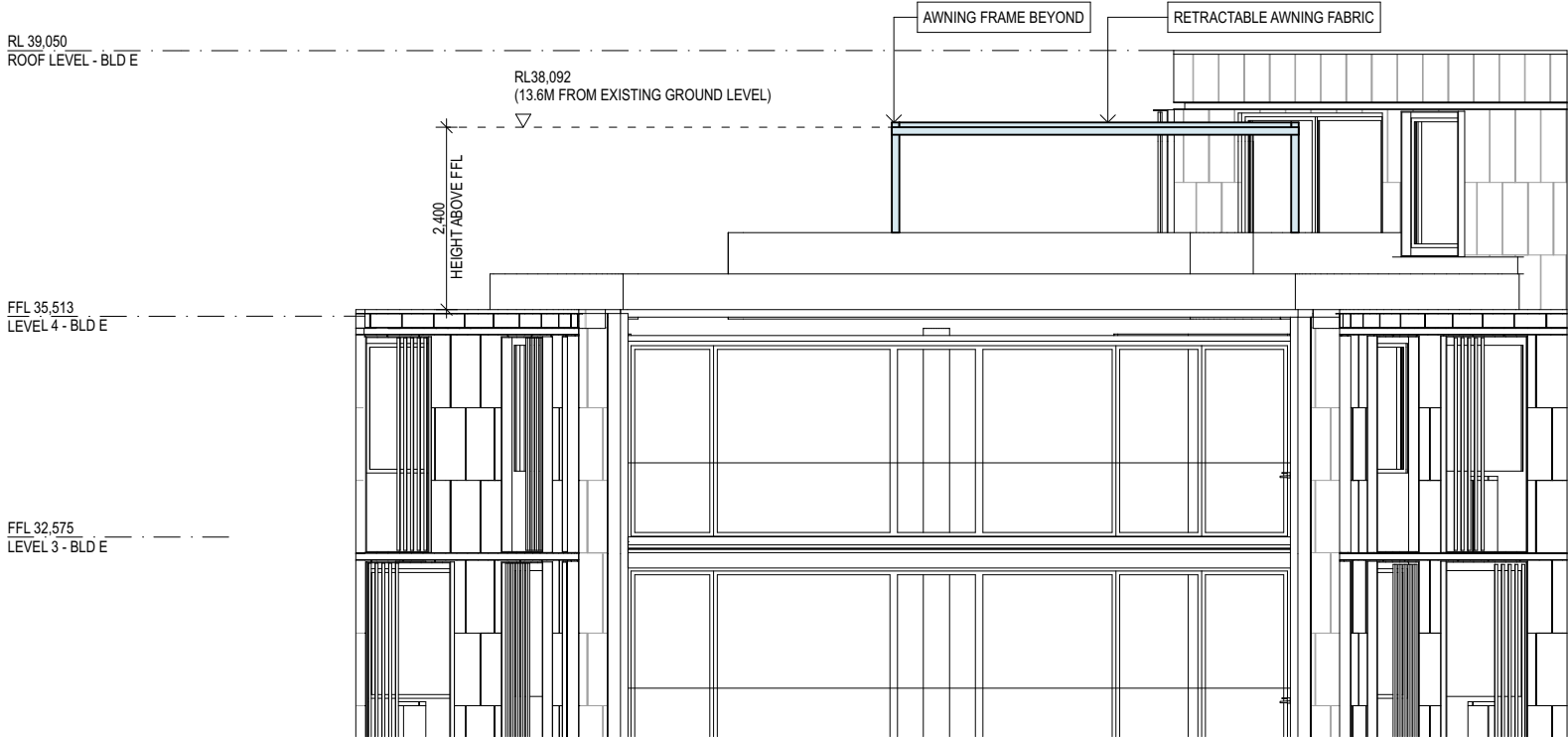
FOR DEVELOPMENT APPLICATION



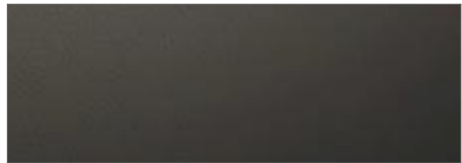
1
-
AWNING BLD-E LEVEL 4 SECTION
1:100



2
-
AWNING BLD-E LEVEL 4 PLAN
1:100



3
-
AWNING BLD-E LEVEL 4 ELEVATION
1:100



AWNING FRAME: ANODIZED ALUMINIUM
(TO MATCH BLD E DARK FRAME DETAILS)



AWNING FABRIC: BEIGE

FOR DEVELOPMENT APPLICATION

ARCHITECT

CHROFI

3/1 THE CORSO MANLY NSW 2095 AUSTRALIA
T +61 2 8096 8500 E info@chrofi.com
CHOI ROPHA FIGHERA P/L ACN 144 714 885 ATF CHOI ROPHA FIGHERA UNIT TRUST T/A CHROFI ABN 22 365 257 187 NOMINATED ARCHITECT JOHN CHOI 8706 TAI ROPHA 6566 STEVEN FIGHERA 6609
THIS DRAWING SHOULD BE READ IN CONJUNCTION WITH ALL RELEVANT CONTRACTS, SPECIFICATION, REPORT AND DRAWINGS. DO NOT SCALE DRAWINGS. DIMENSIONS GOVERN. VERIFY ALL DIMENSIONS ON SITE BEFORE CONSTRUCTION. COPYRIGHT OF THIS DRAWING IS VESTED IN CHROFI.

REV	DATE	ISSUE
A	17/6/21	FOR DEVELOPMENT APPLICATION
B	20/7/21	FOR DEVELOPMENT APPLICATION
C	1/9/21	FOR DEVELOPMENT APPLICATION
D	24/9/21	FOR DEVELOPMENT APPLICATION
E	22/2/22	FOR DEVELOPMENT APPLICATION
F	24/3/22	FOR DEVELOPMENT APPLICATION
G	19/4/22	FOR DEVELOPMENT APPLICATION

REV DATE ISSUE

PROJECT

Watermark Freshwater - Building E Awnings
80 Evans Street, Freshwater NSW 2096

PROJECT NUMBER	PLOT DATE	DRAWN	CHECKED
1354	20/4/22	CL	FR

SHEET SCALE
1:100

SHEET SIZE
A3

NORTH

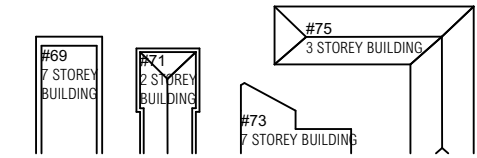
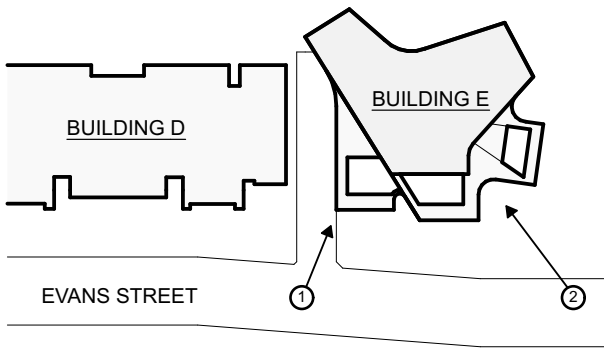
SHEET TITLE

BUILDING E - LEVEL 4 - EAST AWNING
DETAIL

SHEET NUMBER
A-DA04

REVISION

G



1
-
INDICATIVE STREET VIEW 1
VIEW FROM EVANS STREET



2
-
INDICATIVE STREET VIEW 2
VIEW FROM EVANS STREET

FOR DEVELOPMENT APPLICATION

ARCHITECT

CHROFI

3/1 THE CORSO MANLY NSW 2095 AUSTRALIA
T +61 2 8096 8500 E info@chrofi.com
CHOI ROPHA FIGHERA P/L ACN 144 714 885 ATF CHOI ROPHA FIGHERA UNIT TRUST T/A CHROFI ABN 22 365 257 187 NOMINATED ARCHITECT JOHN CHOI 8706 TAI ROPHA 6566 STEVEN FIGHERA 6609
THIS DRAWING SHOULD BE READ IN CONJUNCTION WITH ALL RELEVANT CONTRACTS, SPECIFICATION, REPORT AND DRAWINGS. DO NOT SCALE DRAWINGS. DIMENSIONS GOVERN. VERIFY ALL DIMENSIONS ON SITE BEFORE CONSTRUCTION. COPYRIGHT OF THIS DRAWING IS VESTED IN CHROFI.

REV	DATE	ISSUE
A	17/6/21	FOR DEVELOPMENT APPLICATION
B	20/7/21	FOR DEVELOPMENT APPLICATION
C	1/9/21	FOR DEVELOPMENT APPLICATION
D	24/9/21	FOR DEVELOPMENT APPLICATION
F	24/3/22	FOR DEVELOPMENT APPLICATION
G	19/4/22	FOR DEVELOPMENT APPLICATION

REV DATE ISSUE

PROJECT

Watermark Freshwater - Building E Awnings
80 Evans Street, Freshwater NSW 2096

PROJECT NUMBER	PLOT DATE	DRAWN	CHECKED	SHEET SCALE	SHEET SIZE
1354	20/4/22	CL	FR	NTS	A3



SHEET TITLE

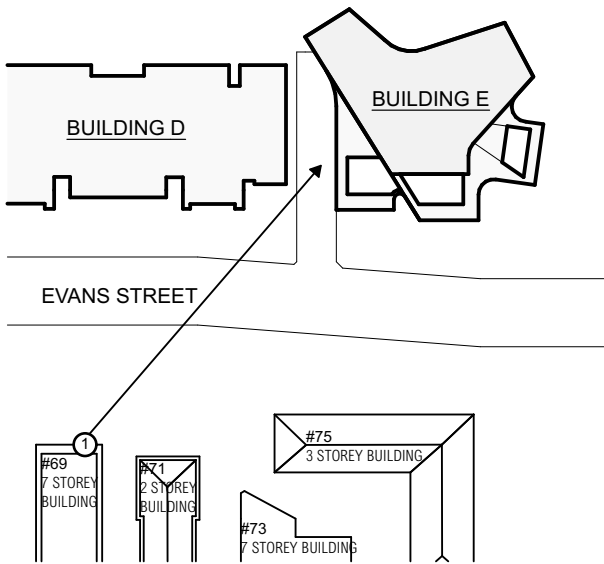
BUILDING E - INDICATIVE STREET VIEW

SHEET NUMBER

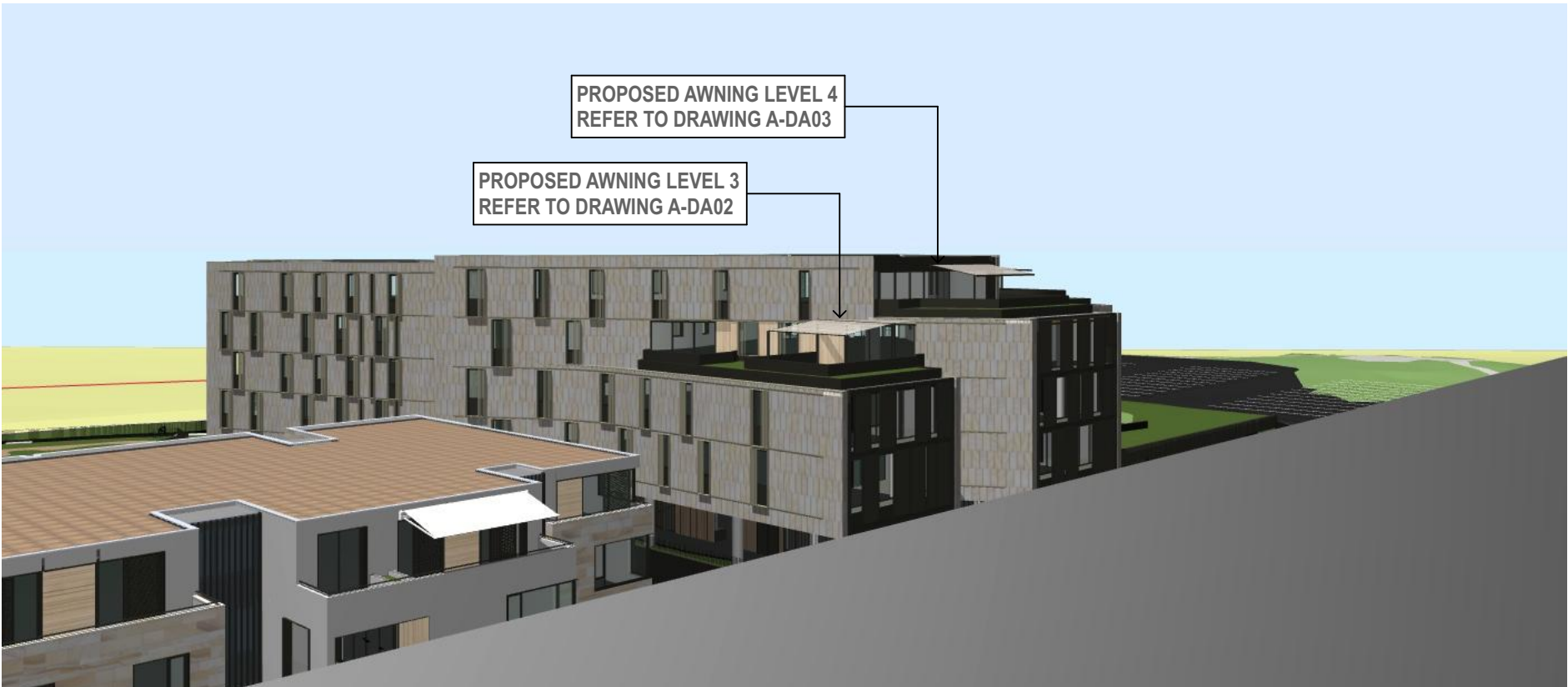
A-DA05

REVISION

G



1
-
EXISTING VIEW 1
VIEW FROM 69 EVANS STREET
(LEVEL 7 - BALCONY - RL40,000)



2
-
PROPOSED VIEW 1
VIEW FROM 69 EVANS STREET
(LEVEL 7 - BALCONY - RL40,000)

FOR DEVELOPMENT APPLICATION

ARCHITECT

CHROFI

3/1 THE CORSO MANLY NSW 2095 AUSTRALIA
T +61 2 8096 8500 E info@chrofi.com
CHOI ROPHA FIGHERA P/L ACN 144 714 885 ATF CHOI ROPHA FIGHERA UNIT TRUST T/A CHROFI ABN 22 365 257 187 NOMINATED ARCHITECT JOHN CHOI 8706 TAI ROPHA 6566 STEVEN FIGHERA 6609
THIS DRAWING SHOULD BE READ IN CONJUNCTION WITH ALL RELEVANT CONTRACTS, SPECIFICATION, REPORT AND DRAWINGS. DO NOT SCALE DRAWINGS. DIMENSIONS GOVERN. VERIFY ALL DIMENSIONS ON SITE BEFORE CONSTRUCTION. COPYRIGHT OF THIS DRAWING IS VESTED IN CHROFI.

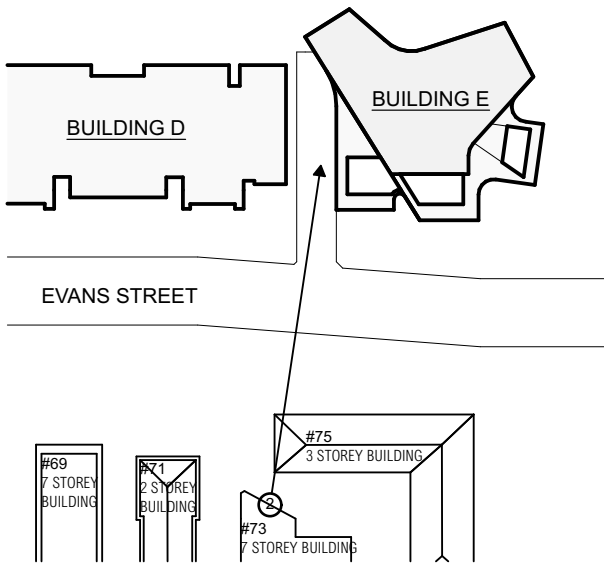
REV	DATE	ISSUE	REV	DATE	ISSUE
A	17/6/21	FOR DEVELOPMENT APPLICATION			
B	20/7/21	FOR DEVELOPMENT APPLICATION			
C	1/9/21	FOR DEVELOPMENT APPLICATION			
D	24/9/21	FOR DEVELOPMENT APPLICATION			
F	24/3/22	FOR DEVELOPMENT APPLICATION			
G	19/4/22	FOR DEVELOPMENT APPLICATION			

PROJECT
Watermark Freshwater - Building E Awnings
80 Evans Street, Freshwater NSW 2096

PROJECT NUMBER	PLOT DATE	DRAWN	CHECKED	SHEET SCALE	SHEET SIZE	NORTH
1354	20/4/22	CL	FR	NTS	A3	

SHEET TITLE
BUILDING E - VIEW ANALYSIS

SHEET NUMBER	REVISION
A-DA06	G



1
-
EXISTING VIEW 2
VIEW FROM 73 EVANS STREET
(LEVEL 7 - BALCONY - RL40,000)



2
-
PROPOSED VIEW 2
VIEW FROM 73 EVANS STREET
(LEVEL 7 - BALCONY - RL40,000)

FOR DEVELOPMENT APPLICATION

ARCHITECT

CHROFI

3/1 THE CORSO MANLY NSW 2095 AUSTRALIA
T +61 2 8096 8500 E info@chrofi.com
CHOI ROPHA FIGHERA P/L ACN 144 714 885 ATF CHOI ROPHA FIGHERA UNIT TRUST T/A CHROFI ABN 22 365 257 187 NOMINATED ARCHITECT JOHN CHOI 8706 TAI ROPHA 6566 STEVEN FIGHERA 6609
THIS DRAWING SHOULD BE READ IN CONJUNCTION WITH ALL RELEVANT CONTRACTS, SPECIFICATION, REPORT AND DRAWINGS. DO NOT SCALE DRAWINGS. DIMENSIONS GOVERN. VERIFY ALL DIMENSIONS ON SITE BEFORE CONSTRUCTION. COPYRIGHT OF THIS DRAWING IS VESTED IN CHROFI.

REV	DATE	ISSUE
A	17/6/21	FOR DEVELOPMENT APPLICATION
B	20/7/21	FOR DEVELOPMENT APPLICATION
C	1/9/21	FOR DEVELOPMENT APPLICATION
D	24/9/21	FOR DEVELOPMENT APPLICATION
F	24/3/22	FOR DEVELOPMENT APPLICATION
G	19/4/22	FOR DEVELOPMENT APPLICATION

REV DATE ISSUE

PROJECT

Watermark Freshwater - Building E Awnings
80 Evans Street, Freshwater NSW 2096

PROJECT NUMBER	PLOT DATE	DRAWN	CHECKED	SHEET SCALE	SHEET SIZE
1354	20/4/22	CL	FR	NTS	A3



SHEET TITLE

BUILDING E - VIEW ANALYSIS

SHEET NUMBER

A-DA07

REVISION

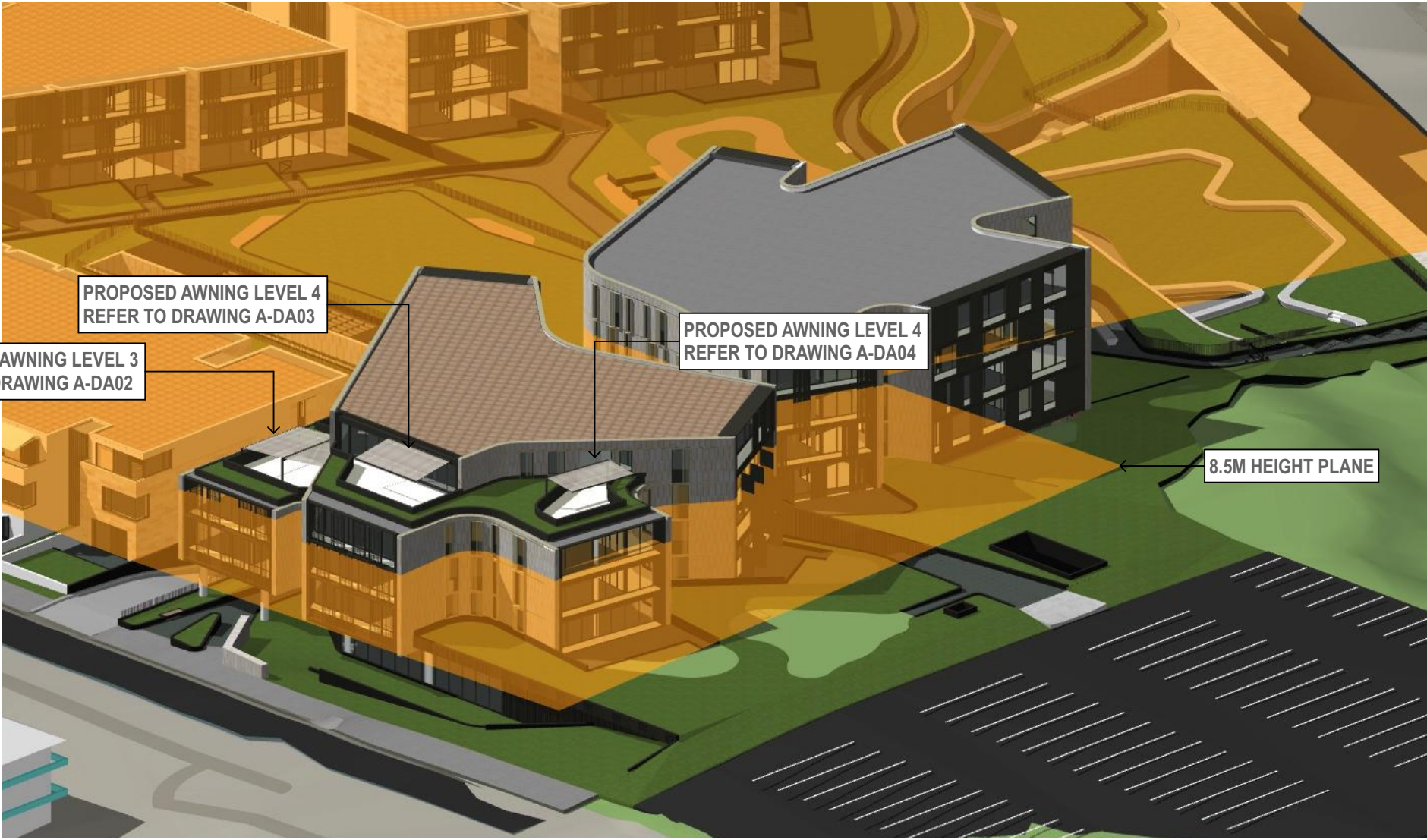
G



8.5M HEIGHT PLANE

1
-

BLD E - 8.5M HEIGHT PLANE



PROPOSED AWNING LEVEL 4
REFER TO DRAWING A-DA03

PROPOSED AWNING LEVEL 3
REFER TO DRAWING A-DA02

PROPOSED AWNING LEVEL 4
REFER TO DRAWING A-DA04

8.5M HEIGHT PLANE

2
-

BLD E - 8.5M HEIGHT PLANE

FOR DEVELOPMENT APPLICATION

ARCHITECT

CHROFI

3/1 THE CORSO MANLY NSW 2095 AUSTRALIA
T +61 2 8096 8500 E info@chrofi.com
CHOI ROPHA FIGHERA P/L ACN 144 714 885 ATF CHOI ROPHA FIGHERA UNIT TRUST T/A CHROFI ABN 22 365 257 107 NOMINATED ARCHITECT JOHN CHOI 8706 TAI ROPHA 6566 STEVEN FIGHERA 6609
THIS DRAWING SHOULD BE READ IN CONJUNCTION WITH ALL RELEVANT CONTRACTS, SPECIFICATION, REPORT AND DRAWINGS. DO NOT SCALE DRAWINGS. DIMENSIONS GOVERN. VERIFY ALL DIMENSIONS ON SITE BEFORE CONSTRUCTION. COPYRIGHT OF THIS DRAWING IS VESTED IN CHROFI.

REV	DATE	ISSUE
D	24/9/21	FOR DEVELOPMENT APPLICATION
F	24/3/22	FOR DEVELOPMENT APPLICATION
G	19/4/22	FOR DEVELOPMENT APPLICATION

REV DATE ISSUE

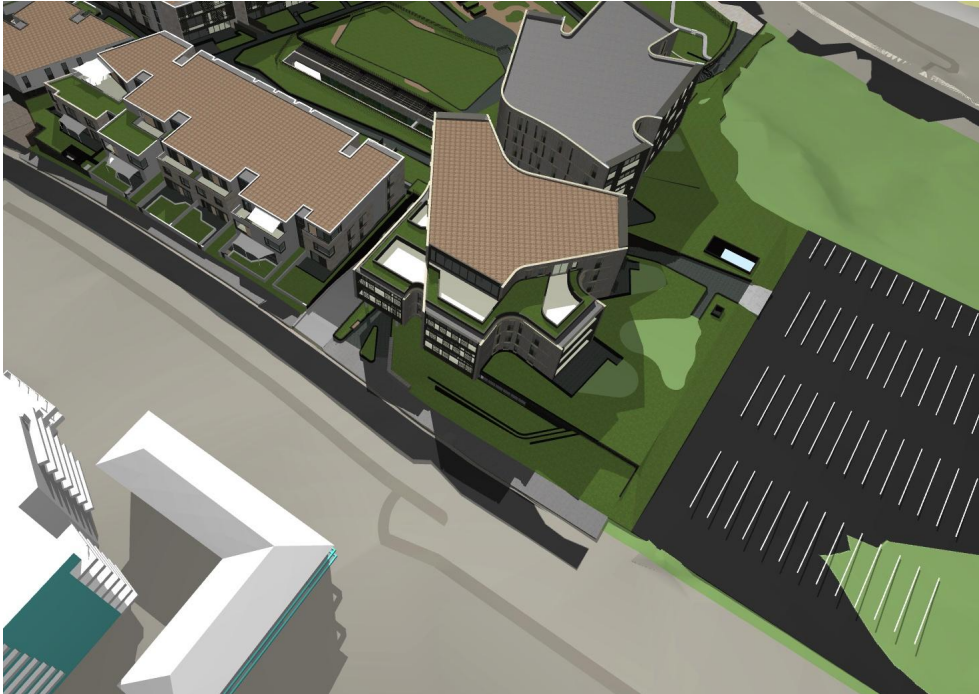
PROJECT
Watermark Freshwater - Building E Awnings
80 Evans Street, Freshwater NSW 2096

PROJECT NUMBER	PLOT DATE	DRAWN	CHECKED	SHEET SCALE	SHEET SIZE	NORTH
1354	20/4/22	CL	FR	NTS	A3	

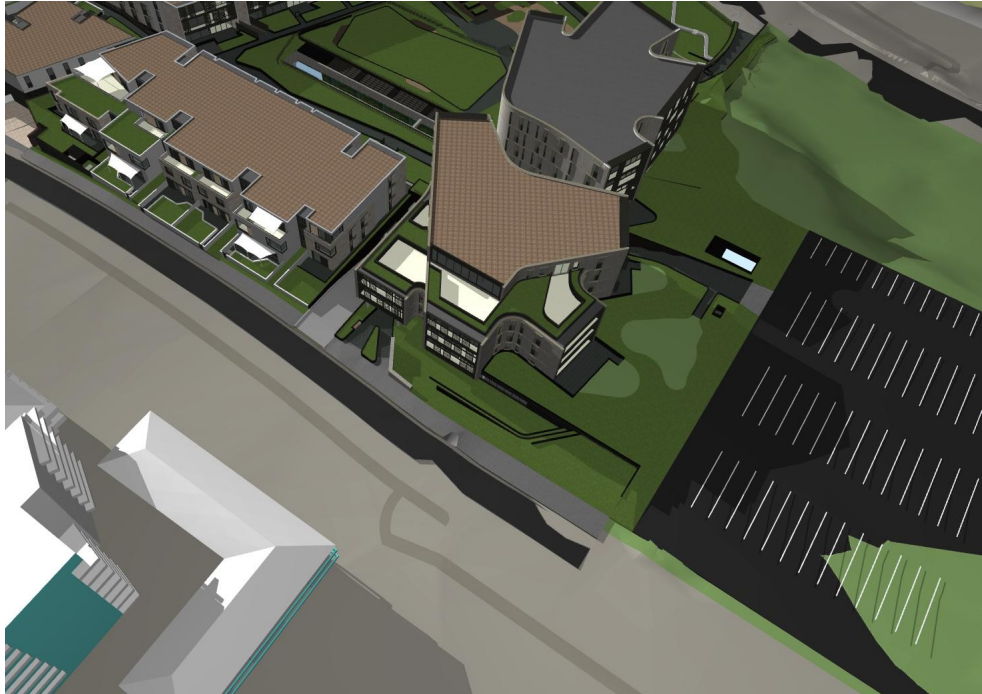
SHEET TITLE	REVISION
BUILDING E - 8.5M HEIGHT PLANE DIAGRAM	
SHEET NUMBER	
A-DA08	G



1 21 JUNE - 9AM - EXISTING



2 21 JUNE - 12PM - EXISTING



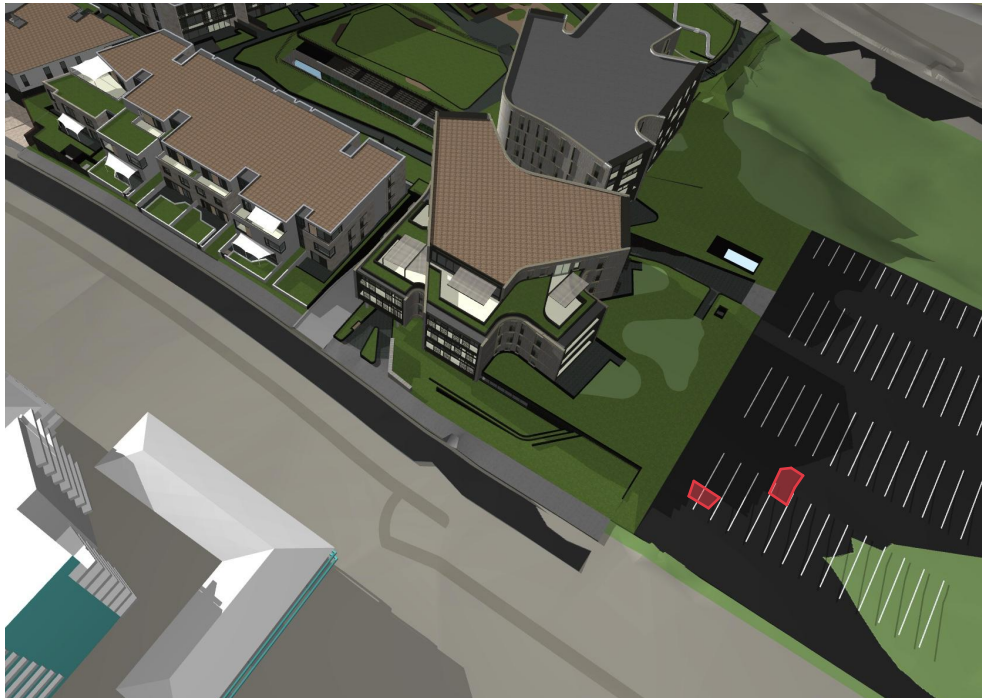
3 21 JUNE - 3PM - EXISTING



4 21 JUNE - 9AM - PROPOSED



5 21 JUNE - 12PM - PROPOSED



6 21 JUNE - 3PM - PROPOSED

ADDITIONAL SHADOW BY AWNINGS

***NOTE:**
FULL EXTEND OF PROPOSED AWNINGS SHOW
INCL. RETRACTABLE, TRANSLUCENT FABRIC

FOR DEVELOPMENT APPLICATION

REV	DATE	ISSUE	REV	DATE	ISSUE
A	4/2/22	FOR DEVELOPMENT APPLICATION			
F	24/3/22	FOR DEVELOPMENT APPLICATION			
G	19/4/22	FOR DEVELOPMENT APPLICATION			

PROJECT					
Watermark Freshwater - Building E Awnings					
80 Evans Street, Freshwater NSW 2096					
PROJECT NUMBER	PLOT DATE	DRAWN	CHECKED	SHEET SCALE	SHEET SIZE
1354	20/4/22	CL	FR	NTS	A3

SHEET TITLE	
SHADOW ANALYSIS	
SHEET NUMBER	REVISION
A-DA09	G



1 ELEVATION FROM EVANS STREET
1:100

REV	DATE	ISSUE
A	25/3/22	FOR DEVELOPMENT APPLICATION
G	19/4/22	FOR DEVELOPMENT APPLICATION

REV	DATE	ISSUE

PROJECT

Watermark Freshwater – Building E Awnings

80 Evans Street, Freshwater NSW 2096

PROJECT NUMBER	PLOT DATE	DRAWN	CHECKED
1354	20/4/22	CL	FR

SHEET TITLE	
BUILDING E - ELEVATION	
SHEET NUMBER	REVISION
A-DA10	G